

COOK, Bert & Alta E.

EEL RIVER

TAXING UNIT

PT NW & PT SW 13-17-2W 173.64A

19 - 1

KEY NUMBER

8530 3940
3770

YEAR	KEY NUMBER	LAND	BUILDINGS	TOTAL VALUATION	EXEMPTION	NET VALUE	J. P.	TRANSFERS TO	DATE OF INST'NT	DATE OF TRANSFER	KIND OF INST'NT	ALL OR PART
1949	19-1			9950		9950						1
												2
												3
						133.33						4
1950	19-1	8530	3540	12070		12070						5
												6
												7
						131.56						8
1951	19-1			12300		12300						9
												10
												11
												12
1952	19-1	8530	3770 +230	12300 12300		12300						13
												14
												15
						178.35						16
1953	19-1	8530	3940	12470		12470						17
												18
												19
						200.77						20
1954	19-1	8530	3940 +170	12470		12470						21
												22
												23
						183.31						24
1955	19-1	8530	3940	12470		12470						25
												26
												27
						192.04						28
1956	19-1	8530	3940	12470		12470						29
												30
												31
						198.27						32

FORM PRESCRIBED BY STATE BOARD OF ACCOUNTS
COUNTY FORM NO. TA 1, 1941.

DRAW-WALKER

REAL ESTATE VALUATION AND TRANSFER RECORD
HENDRICKS COUNTY, INDIANA

YEAR	KEY NUMBER	LAND	BUILDINGS	TOTAL VALUATION	EXEMPTION	NET VALUE	J. P.	TRANSFERS TO	DATE OF INST'NT	DATE OF TRANSFER	KIND OF INST'NT	ALL OR PART
1941		NON TAXABLE										
1942												
1943												
1944												
1945												
1946								Cook, Bert & Alta E	6/7/46	3/11/47	WD	all
1947		+ 6950	+ 3000									
1948	19-1 19-1	6950	3000	9950 9950		9950 9950						
						130.35						

DALE, Buell W.

2900
1620 650
1280 -

NE NW 13-17-2W 40.00A
SW NE 13-17-2W 40.00A

EEL RIVER

19 - 2
19 - 5

TAXING UNIT

KEY NUMBER

YEAR	KEY NUMBER	LAND	BUILDINGS	TOTAL VALUATION	EXEMPTION	NET VALUE	J. P.	TRANSFERS TO	DATE OF INST'NT	DATE OF TRANSFER	KIND OF INST'NT	ALL OR PART
1949	19-2,5			3760		3760						
						50.38						
1950	19-2 19-5	1620 1280	650	3550		3550						
						39.69						
1951	19-2,5			3550		3550						
						43.31						
1952	19-2,5	2900	650	3550		3550						
						51.47						
1953	19-2,5	2900	650	3550		3550						
						57.15						
1954	19-2,5	2900	650	3550		3550						
						52.19						
1955	19-2,5	2900	650	3550		3550						
						54.67						
1956	19-2	2900	650	3550		3550						
						56.44						

FORM PRESCRIBED BY STATE BOARD OF ACCOUNTS
COUNTY FORM NO. TA 1, 1941.

ORAN-WALKER

REAL ESTATE VALUATION AND TRANSFER RECORD
HENDRICKS COUNTY, INDIANA

DALE, Buell W.

NE NW 13-17-2W 40.00 A
 SW NE 13-17-2W 40.00 A

EEL RIVER _____ TAXING UNIT
 19 - 2 _____ KEY NUMBER
 19 - 5

YEAR	KEY NUMBER	LAND	BUILDINGS	TOTAL VALUATION	EXEMPTION	NET VALUE	J. P.	TRANSFERS TO	DATE OF INST'NT	DATE OF TRANSFER	KIND OF INST'NT	ALL OR PART
1941	19-2 19-5	1600 1600		3200		3200						
1942	19-2,5			3200		22.72 3200						
1943	19-2,5			3200		23.04 3200						
1944	19-2 19-5 19-2,5	1600 1600	# 19-2 + 560 560	3760 3760		26.88 3760						
1945	19-2,5			3760		33.09 3760						
1946	19-2,5			3760		35.72 3760						
1947	19-2,5			3760		33.46 3760						
1948	19-2,5			3760		50.38 3760						
						49.26						

FORM PRESCRIBED BY STATE BOARD OF ACCOUNTS
 COUNTY FORM NO. TA 1, 1941.

DRAW-WALKER

REAL ESTATE VALUATION AND TRANSFER RECORD
 HENDRICKS COUNTY, INDIANA

SAMPLE, Anna K.

EEL RIVER

TAXING UNIT

NW NE 13-17-2W 40.00A

19 - 3

KEY NUMBER

1510

YEAR	KEY NUMBER	LAND	BUILDINGS	TOTAL VALUATION	EXEMPTION	NET VALUE	J. P.	TRANSFERS TO	DATE OF INST'NT	DATE OF TRANSFER	KIND OF INST'NT	ALL OR PART
1949	19-3			1060		1060						
1950	19-3	1510		1510		14.20 1510						
1951	19-3			1510		16.46 1510						
1952	19-3	1510		1510		18.42 1510						
1953	19-3	1510		1510		21.90 1510						
1954	19-3	1510		1510		24.31 1510						
1955	19-3	1510		1510		22.20 1510						
1958	19-3	1510		1510	750-	23.25 760						
					750	12.08						

FORM PRESCRIBED BY STATE BOARD OF ACCOUNTS
COUNTY FORM NO. TA 1, 1941.

DRAW-WALKER

REAL ESTATE VALUATION AND TRANSFER RECORD
HENDRICKS COUNTY, INDIANA

SAMPLE, Anna K.

NW NE 13-17-2W 40.00A

EEL RIVER TAXING UNIT

19 - 3 KEY NUMBER

YEAR	KEY NUMBER	LAND	BUILDINGS	TOTAL VALUATION	EXEMPTION	NET VALUE	J. P.	TRANSFERS TO	DATE OF INST'NT	DATE OF TRANSFER	KIND OF INST'NT	ALL OR PART
1941	19-3	1060		1060	530-	530						
						3.76						
1942	19-3			1060	530-	530						
					530	3.82						
1943	19-3			1060	530-	530						
					530	4.45						
1944	19-3			1060		1060						
						9.33						
1945	19-3			1060		1060						
						10.07						
1946	19-3			1060		1060						
						9.43						
1947	19-3			1060		1060						
						14.20						
1948	19-3			1060		1060						
						13.89						

FORM PRESCRIBED BY STATE BOARD OF ACCOUNTS
COUNTY FORM NO. TA 1, 1941.

SHAW-WALKER

REAL ESTATE VALUATION AND TRANSFER RECORD
HENDRICKS COUNTY, INDIANA

CORNWELL, George W. & Jessie F.

EEL RIVER

TAXING UNIT

NE NE 13-17-2W 40.00A

19 - 4

KEY NUMBER

1590 1040

YEAR	KEY NUMBER	LAND	BUILDINGS	TOTAL VALUATION	EXEMPTION	NET VALUE	J. P.	TRANSFERS TO	DATE OF INST'NT	DATE OF TRANSFER	KIND OF INST'NT	ALL OR PART
1949	19-4			2400		2400		RECKEL , John & Ruth R.	10/18/49	11/21/49	WD	all
						32.16						
1950	19-4	1590	1040	2630	1000-	1630						
					1000	17.77						
1951	19-4			2630		2630		WILSON, Irven & Elizabeth Kathryn	6/5/51	6/5/51	WD	all
						32.09						
1952	19-4	1590	1040	2630	1000-	1630						
					1000	23.63						
1953	19-4	1590	1040	2630	1000-	1630						
					1000	26.24						
1954	19-4	1590	1040	2630	1000-	1630						
					1000	23.96						
1955	19-4	1590	1040	2630	1000-	1630						
					1000	25.10						
1956	19-4	1590	1040	2630	1000-	1630						
					1000	25.92						

FORM PRESCRIBED BY STATE BOARD OF ACCOUNTS
COUNTY FORM NO. TA 1, 1941.

CHAM-WALKER

REAL ESTATE VALUATION AND TRANSFER RECORD
HENDRICKS COUNTY, INDIANA

~~ISLBY, Loren T. & Susan L.~~

NE NE 13-17-2W 40.00A
~~SE NE 13-17-2W 40.00A~~

EEL RIVER TAXING UNIT
19 - 4 KEY NUMBER
10--6-

YEAR	KEY NUMBER	LAND	BUILDINGS	TOTAL VALUATION	EXEMPTION	NET VALUE	J. P.	TRANSFERS TO	DATE OF INST'NT	DATE OF TRANSFER	KIND OF INST'NT	ALL OR PART
1941	19-4	1600	800					Howes, Everett E. & Laura	3-24-42	3-26-42	W D	pt
	19-6	1600		4000		4000		Benge, Lee & Naomi	3/24/42	3-27-42	WD	All
1942	19-4	1600	800	2400		2400						
	19-4			2400		2400						
1943	19-4			2400	1000-	1400		Cornwell, George W. & Jessie F.	10/4/43	10/4/43	WD	all
1944	19-4			2400	1000	1400						
1945	19-4			2400		2400						
1946	19-4			2400		2400						
1947	19-4			2400		2400						
1948	19-4			2400		2400						

FORM PRESCRIBED BY STATE BOARD OF ACCOUNTS
COUNTY FORM NO. TA 1, 1941.

CHAS-WALKER

REAL ESTATE VALUATION AND TRANSFER RECORD
HENDRICKS COUNTY, INDIANA

HOWES, Everett E. & Laura

EEL RIVER

TAXING UNIT

SE NE 13-17-2W 40.00A

KEY NUMBER

19 - 6

1620

YEAR	KEY NUMBER	LAND	BUILDINGS	TOTAL VALUATION	EXEMPTION	NET VALUE	J. P.	TRANSFERS TO	DATE OF INST'NT	DATE OF TRANSFER	KIND OF INST'NT	ALL OR PART
1949	19-6			1600	1600-SE	00						
1950	19-6	1620		1620	1600SE 500-	1120						
1951	19-6			1620	500 500-	1120						
1952	19-6	1620		1620	500	13.66 1620						
1953	19-6	1620		1620		23.49 1620						
1954	19-6	1620		1620		26.08 810						
1955	19-6	1620		1620	810 810-	810						
1955	19-6	1620		1620	810 810-	12.47 810						
					810	12.88						

FORM PRESCRIBED BY STATE BOARD OF ACCOUNTS
COUNTY FORM NO. TA 1, 1941.

SHAW-WALKER

2144

REAL ESTATE VALUATION AND TRANSFER RECORD
HENDRICKS COUNTY, INDIANA

Howes, Everett E. & Laura

Eel River

TAXING UNIT

SE NE 13-17-2W 40.00 A

19 - 6

KEY NUMBER

YEAR	KEY NUMBER	LAND	BUILDINGS	TOTAL VALUATION	EXEMPTION	NET VALUE	J. P.	TRANSFERS TO	DATE OF INST'NT	DATE OF TRANSFER	KIND OF INST'NT	ALL OR PART
1941												1
												2
												3
												4
1942	19-6	1600		1600		1600						5
												6
												7
						11.52						8
1943	19-6			1600		1600						9
												10
												11
						13.44						12
1944	19-6			1600		1600						13
												14
												15
						14.08						16
1945	19-6			1600		1600						17
												18
												19
						15.20						20
1946	19-6			1600		1600						21
												22
												23
						14.24						24
1947	19-6			1600		1600						25
												26
												27
						21.44						28
1948	19-6			1600		1600						29
												30
												31
						20.96						32

FORM PRESCRIBED BY STATE BOARD OF ACCOUNTS
COUNTY FORM NO. TA 1, 1941.

SHAW-WALKER

REAL ESTATE VALUATION AND TRANSFER RECORD
HENDRICKS COUNTY, INDIANA

SCOTT, Fay

EEL RIVER

TAXING UNIT

PT SE 13-17-2W 50.00A

19 - 7

KEY NUMBER

2260 -

YEAR	KEY NUMBER	LAND	BUILDINGS	TOTAL VALUATION	EXEMPTION	NET VALUE	J. P.	TRANSFERS TO	DATE OF INST'NT	DATE OF TRANSFER	KIND OF INST'NT	ALL OR PART
1949	19-7			2000		2000						
						26.80						
1950	19-7	2260		2260		2260						
						24.63						
1951	19-7			2260		2260						
						27.57						
1952	19-7	2260		2260		2260						
						32.77						
1953	19-7	2260		2260		2260						
						36.39						
1954	19-7	2260		2260		2260						
						33.22						
1955	19-7	2260		2260		2260						
						34.80						
1956	19-7	2260		2260		2260						
						35.93						

FORM PRESCRIBED BY STATE BOARD OF ACCOUNTS
COUNTY FORM NO. TA 1, 1941.

SHAW-WALKER

REAL ESTATE VALUATION AND TRANSFER RECORD
HENDRICKS COUNTY, INDIANA

SCOTT, Fay

PT SE 13-17-2W 50.00A

EEL RIVER

TAXING UNIT

19 - 7

KEY NUMBER

YEAR	KEY NUMBER	LAND	BUILDINGS	TOTAL VALUATION	EXEMPTION	NET VALUE	J. P.	TRANSFERS TO	DATE OF INST'NT	DATE OF TRANSFER	KIND OF INST'NT	ALL OR PART
1941	19-7	2000		2000		2000						
						14.20						
1942	19-7			2000		2000						
						14.40						
1943	19-7			2000		2000						
						16.80						
1944	19-7			2000		2000						
						17.60						
1945	19-7			2000		2000						
						19.00						
1946	19-7			2000		2000						
						17.80						
1947	19-7			2000		2000						
						26.80						
1948	19-7			2000		2000						
						26.30						

FORM PRESCRIBED BY STATE BOARD OF ACCOUNTS
COUNTY FORM NO. TA 1, 1941.

SHAW-WALKER

REAL ESTATE VALUATION AND TRANSFER RECORD
HENDRICKS COUNTY, INDIANA

DALE, Charles B. & Della

EEL RIVER

TAXING UNIT

PT SE 13-17-2W 17.40A

19 - 8

KEY NUMBER

820

YEAR	KEY NUMBER	LAND	BUILDINGS	TOTAL VALUATION	EXEMPTION	NET VALUE	J. P.	TRANSFERS TO	DATE OF INST'NT	DATE OF TRANSFER	KIND OF INST'NT	ALL OR PART
1949	19-8			680		680						
1950	19-8	820		820		820	9.11					
1951	19-8			820		820	8.94					
1952	19-8	820		820		820	10.50					
1953	19-8	820		820		820	11.89					
1954	19-8	820		820		820	13.20					
1955	19-8	820		820		820	12.05					
1956	19-8	820		820		820	12.63					
1957	19-8	820		820		820	13.04					

FORM PRESCRIBED BY STATE BOARD OF ACCOUNTS
COUNTY FORM NO. TA 1, 1941.

SHAW-WALKER

REAL ESTATE VALUATION AND TRANSFER RECORD
HENDRICKS COUNTY, INDIANA

DALE, Charles B. & Della

PT SE 13-17-2W ~~16.75A~~ 17.40a

EEL RIVER _____ TAXING UNIT
 19 - 8 _____ KEY NUMBER

YEAR	KEY NUMBER	LAND	BUILDINGS	TOTAL VALUATION	EXEMPTION	NET VALUE	J. P.	TRANSFERS TO	DATE OF INST'NT	DATE OF TRANSFER	KIND OF INST'NT	ALL OR PART
1941	19-8	680		680		680						
1942	19-8			680		4.83 680						
1943	19-8			680		4.90 680						
1944	19-8			680		5.71 680						
1945	19-8			680		5.98 680						
1946	19-8			680		6.46 680						
1947	19-8			680		6.05 680						
1948	19-8			680		9.11 680						
						8.91						

FORM PRESCRIBED BY STATE BOARD OF ACCOUNTS
 COUNTY FORM NO. TA 1, 1941.

DRAW-WALKER

REAL ESTATE VALUATION AND TRANSFER RECORD
 HENDRICKS COUNTY, INDIANA

LANDRUM, CALVIN & AMERICA E. H&W

PT SE¹/₄ 13-17-2W 1.00A

EEL RIVER TAXING UNIT

19-8-01 KEY NUMBER

acquired 72'

YEAR	KEY NUMBER	LAND	BUILDINGS	TOTAL VALUATION	EXEMPTION	NET VALUE	J. P.	TRANSFERS TO	DATE OF INST'NT	DATE OF TRANSFER	KIND OF INST'NT	ALL OR PART
1	1965											
2												
3												
4												
5	1966											
6												
7												
8												
9	1967											
10												
11												
12												
13	1968											
14												
15												
16												
17	1969											
18												
19												
20												
21	1970											
22												
23												
24												
25	1971											
26												
27												
28												
29	1972											
30												
31												
32												

See Key # 19-8 for Value

FORM PRESCRIBED BY STATE BOARD OF ACCOUNTS
COUNTY FORM NO. TA 1, 1941.

HENDRICKS, John & Bertha P.

7341

PT SW 13-17-2W 77.12A

EEL RIVER

TAXING UNIT

19 - 9

KEY NUMBER

2390

3150

YEAR	KEY NUMBER	LAND	BUILDINGS	TOTAL VALUATION	EXEMPTION	NET VALUE	J. P.	TRANSFERS TO	DATE OF INST'NT	DATE OF TRANSFER	KIND OF INST'NT	ALL OR PART
1949	19-9			5320		5320						
1950	19-9	2390	3150	5540		5540		(HENDRICKS, John L. & COMER, Mary Elizabeth (the above QCD entered for reference only)(from Bertie T. Hendricks)	9/12/50	10/19/50	QCD	
1951	19-9			5540		5540		HENDRICKS, John L. & Mary Elizabeth Comer Life estate	4/2/52	4/3/52	Will	all
1952	19-9	2390	3150	5540		5540						
1953	19-9	2390	3150	5540		5540						
1954	19-9	2390	3150	5540		5540						
1955	19-9	2390	3150	5540		5540						
1959	19-9	2390	3150	5540		5540						

FORM PRESCRIBED BY STATE BOARD OF ACCOUNTS
COUNTY FORM NO. TA 1, 1941.

SHAW-WALKER

REAL ESTATE VALUATION AND TRANSFER RECORD
HENDRICKS COUNTY, INDIANA

HENDRICKS, John & Bertha P.

PT SW 13-17-2W 77.12A

EEL RIVER _____ TAXING UNIT
 19 - 9 _____ KEY NUMBER

YEAR	KEY NUMBER	LAND	BUILDINGS	TOTAL VALUATION	EXEMPTION	NET VALUE	J. P.	TRANSFERS TO	DATE OF INST'NT	DATE OF TRANSFER	KIND OF INST'NT	ALL OR PART
1941	19-9	3620	1700	5320		5320						
1942	19-9			5320		37.77 5320						
1943	19-9			5320		38.30 5320						
1944	19-9			5320		44.69 5320						
1945	19-9			5320		46.82 5320						
1946	19-9			5320		50.54 5320						
1947	19-9			5320		47.35 5320						
1948	19-9			5320		71.29 5320						
						69.69						

FORM PRESCRIBED BY STATE BOARD OF ACCOUNTS
 COUNTY FORM NO. TA 1, 1941.

DRAW-WALKER

REAL ESTATE VALUATION AND TRANSFER RECORD
 HENDRICKS COUNTY, INDIANA

MARTIN, PAUL / EULA ROSE

EEL RIVER

TAXING UNIT

PT SE SW 13-17-2W 36.40A
PT SE SW 13-17-2W 1.10A

19 - 10
19 - 13

KEY NUMBER

950
~~950~~

YEAR	KEY NUMBER	LAND	BUILDINGS	TOTAL VALUATION	EXEMPTION	NET VALUE	J. P.	TRANSFERS TO	DATE OF INST'NT	DATE OF TRANSFER	KIND OF INST'NT	ALL OR PART
1949	19-10, 13			1540		1540						
						20.64						
1950	19-10 19-13	930 20		950		950						
1951	19-10, 13			950		950		MARTIN, Eula Rose	5/14/51	5/14/51	AFF	All
1952	19-10, 13	950		950		950						
1953	19-10, 13	950		950		950						
1954	19-10, 13	950		950		950						
1955	19-10, 13	950		950		950						
1955	19-10	950		950		950						
						15.10						

FORM PRESCRIBED BY STATE BOARD OF ACCOUNTS
COUNTY FORM NO. TA 1, 1941.

SHAW-WALKER

REAL ESTATE VALUATION AND TRANSFER RECORD
HENDRICKS COUNTY, INDIANA

MARTIN, - Paul

PT SE SW 13-17-2W ~~38.13A~~ 36.40a
Pl SE SW 13-17-2W 1.10a

EEL RIVER TAXING UNIT
 19 - 10, ~~13~~
 19-13 KEY NUMBER

YEAR	KEY NUMBER	LAND	BUILDINGS	TOTAL VALUATION	EXEMPTION	NET VALUE	J. P.	TRANSFERS TO	DATE OF INST'NT	DATE OF TRANSFER	KIND OF INST'NT	ALL OR PART
1941	19-10&13	1540		1540		1540						
1942	19-10,13			1540		<i>10.93</i> 1540						
1943	19-10,13			1540		<i>11.09</i> 1540						
1944	19-10-13			1540		<i>12.94</i> 1540						
1945	19-10,13			1540		<i>13.55</i> 1540		Taylor, John D. to reconvey Martin, Paul & Eula Rose	5/7/45 5/7/45	5/7/45 5/7/45	WD WD	all all
1946	19-10,13			1540		<i>14.63</i> 1540						
1947	19-10,13			1540		<i>13.71</i> 1540						
1948	19-10,13			1540		<i>20.64</i> 1540						
						<i>20.17</i>						

SCOTT, Fay & Adelia M.

EEL RIVER

TAXING UNIT

3110
~~3050~~ 1630
~~1630~~

PT SE 13-17-2W 66.90A
 PT SW SE 13-17-2W 1.20A

19 - 11
 19 - 14

KEY NUMBER

YEAR	KEY NUMBER	LAND	BUILDINGS	TOTAL VALUATION	EXEMPTION	NET VALUE	J. P.	TRANSFERS TO	DATE OF INST'NT	DATE OF TRANSFER	KIND OF INST'NT	ALL OR PART
1949	19-11,14			3750		3750						
1950	19-11 19-14	3050 60	1630	4740		4740						
1951	19-11,14			4740		4740						
1952	19-11,14	3110	1630	4740		4740						
1953	19-11,14	3110	1630	4740		4740						
1954	19,11,14	3110	1630	4740		4740						
1955	19-11,14	3110	1630	4740		4740						
1959	19-11	3110	1630	4740		4740						

FORM PRESCRIBED BY STATE BOARD OF ACCOUNTS
 COUNTY FORM NO. TA 1, 1941.

SHAW-WALKER

REAL ESTATE VALUATION AND TRANSFER RECORD
 HENDRICKS COUNTY, INDIANA

SCOTT, Fay & Adelia M.

PT SE 13-17-2W ~~71.99A~~ 66.90a
 Pt SW SE 13-17-2W 1.20a

EEL RIVER TAXING UNIT
 19 - 11, ~~14~~
 19-14 KEY NUMBER

YEAR	KEY NUMBER	LAND	BUILDINGS	TOTAL VALUATION	EXEMPTION	NET VALUE	J. P.	TRANSFERS TO	DATE OF INST'NT	DATE OF TRANSFER	KIND OF INST'NT	ALL OR PART
1941	19-11&14	2850	900	3750		3750						
						26.62						
1942	19-11,14			3750		3750						
						27 ⁰⁰						
1943	19-11,14			3750		3750						
						31.50						
1944	19-11,14			3750		3750						
						33.00						
1945	19-11,14			3750		3750						
						35.63-						
1946	19-11,14			3750		3750						
						33.38 -						
1947	19-11,14			3750		3750						
						50.25						
1948	19-11,14			3750		3750						
						49.13						

FORM PRESCRIBED BY STATE BOARD OF ACCOUNTS
 COUNTY FORM NO. TA 1, 1941.

SHAW-WALKER

REAL ESTATE VALUATION AND TRANSFER RECORD
 HENDRICKS COUNTY, INDIANA

SMITH, David F.

PT SE 13-17-2W 20.50A

EEL RIVER

TAXING UNIT

19 - 12

KEY NUMBER

1030 -

YEAR	KEY NUMBER	LAND	BUILDINGS	TOTAL VALUATION	EXEMPTION	NET VALUE	J. P.	TRANSFERS TO	DATE OF INST'NT	DATE OF TRANSFER	KIND OF INST'NT	ALL OR PART
1949	19-12			1330		1330						
1950	19-12	1030		1030		1030						
1951	19-12			1030		1030						
1952	19-12	1030		1030		1030						
1953	19-12	1030		1030		1030						
1954	19-12	1030		1030		1030						
1955	19-12	1030		1030	510-	520						
1958	19-12	1030		1030	510	520						
					510	8.27						

FORM PRESCRIBED BY STATE BOARD OF ACCOUNTS
COUNTY FORM NO. TA 1, 1941.

SHAW-WALKER

REAL ESTATE VALUATION AND TRANSFER RECORD
HENDRICKS COUNTY, INDIANA

SMITH, David F.

PT SE 13-17-2W ~~18.51~~ 20.50a

EEL RIVER

TAXING UNIT

19 - 12

KEY NUMBER

YEAR	KEY NUMBER	LAND	BUILDINGS	TOTAL VALUATION	EXEMPTION	NET VALUE	J. P.	TRANSFERS TO	DATE OF INST'NT	DATE OF TRANSFER	KIND OF INST'NT	ALL OR PART
1941	19-12	730	600	1330		1330						
1942	19-12			1330		9.44 1330						
1943	19-12			1330		9.58 1330						
1944	19-12			1330		11.17 1330						
1945	19-12			1330		11.70 1330						
1946	19-12			1330		12.64- 1330						
1947	19-12			1330		11.84 1330						
1948	19-12			1330		17.82 1330						
						17.42						

FORM PRESCRIBED BY STATE BOARD OF ACCOUNTS
COUNTY FORM NO. TA 1, 1941.

SHAW-WALKER

REAL ESTATE VALUATION AND TRANSFER RECORD
HENDRICKS COUNTY, INDIANA

~~WICHENER, Roy W. & Mary W.~~

EEL RIVER

TAXING UNIT

PT SE 13-17-2W 4.00A

19 - 15

KEY NUMBER

60

YEAR	KEY NUMBER	LAND	BUILDINGS	TOTAL VALUATION	EXEMPTION	NET VALUE	J. P.	TRANSFERS TO	DATE OF INST'NT	DATE OF TRANSFER	KIND OF INST'NT	ALL OR PART
1949	19-15			1 80		1 80						
1950	19-15	60		60		2.41 60						
1951	19-15			60		.65 60						
1952	19-15	60		60		.73 60						
1953	19-15	60		60		.87 60						
1954	19 -15	60		60		.97 60						
1955	19-15	60		60		.88 60		J. ROBERTS, Marion & Dorothy	5/28/56	5/28/56	WD	all
1955	19-15	60		60		.92 60						
						.95						

FORM PRESCRIBED BY STATE BOARD OF ACCOUNTS
COUNTY FORM NO. TA 1, 1941.

DRAW-WALKER

REAL ESTATE VALUATION AND TRANSFER RECORD
HENDRICKS COUNTY, INDIANA

MICHENER, Roy W. & Mary M.

PT ~~SW~~ SE 13-17-2W 4.00A

EEL RIVER TAXING UNIT
19 - 15 KEY NUMBER

YEAR	KEY NUMBER	LAND	BUILDINGS	TOTAL VALUATION	EXEMPTION	NET VALUE	J. P.	TRANSFERS TO	DATE OF INST'NT	DATE OF TRANSFER	KIND OF INST'NT	ALL OR PART
1941	19-15	180		180		180						
						<i>1.28</i>						
1942	19-15			180		180						
						<i>1.30</i>						
1943	19-15			180		180						
						<i>1.51</i>						
1944	19-15			180		180						
						<i>1.59</i>						
1945	19-15			180		180						
						<i>1.71</i>						
1946	19-15			180		180						
						<i>1.60</i>						
1947	19-15			180		180						
						<i>2.41</i>						
1948	19-15			180		180						
						<i>2.36</i>						

FORM PRESCRIBED BY STATE BOARD OF ACCOUNTS
COUNTY FORM NO. TA 1, 1941.

SHAW-WALKER

REAL ESTATE VALUATION AND TRANSFER RECORD
HENDRICKS COUNTY, INDIANA

BOOKS/BERN/ & ALTA/ & L.
 /MAC/ KANNON, / BATES/ A. I., / BR. / & ELINOR/ C. /
 // BATES/ A. I., / BR. / & ELINOR/ C. //

PT NW & PT SW 13-17-2W ^{172.62} 173.64A

040-0020-0622-9

EEL RIVER TAXING UNIT

19-1 KEY NUMBER

8380 4320

YEAR	KEY NUMBER	LAND	BUILDINGS	TOTAL VALUATION	EXEMPTION	NET VALUE	J. P.	TRANSFERS TO	DATE OF INST'NT	DATE OF TRANSFER	KIND OF INST'NT	ALL OR PART
1965	19, 1	8,380	4,320	12,700		12,700		MackINNON, James A. jr. & Elinor C.	9/29/69	9/30/69	EX D	ALL
							1.02	JONES, ROBERT L. & B. KATHLEEN H&W	8/18/72	8/21/72	WD	Pt.
1966	19, 1	8,380	4,320	12,700		12,700		MACKINNON, KEVIN LEWIS AN UNMARRIED ADULT R. R. 1 ^{Box 154} JAMESTOWN, IND. 46147	9/6/74	9/6/74	WD	ALL
1967	19, 1	8,380	4,320	12,700		12,700						
1968	19, 1	8,380	4,320	12,700		12,700						
1969	19, 1	10,050	5,590	15,640		15,640						
1970	19, 1	10,050	5,590	15,640		15,640						
1971	19, 1	10,050	5,590	15,640		15,640						
1972	19, 1	10,050	5,590	15,640		15,640						

FORM PRESCRIBED BY STATE BOARD OF ACCOUNTS COUNTY FORM NO. TA 1, 1941.

19\1 9,720 2,100 11,820 11,820

REAL ESTATE VALUATION AND TRANSFER RECORD
 HENDRICKS COUNTY, INDIANA

COOK, Bert & Alta E.

EEL RIVER TAXING UNIT

PT NW & PT SW 13-17-2W 173.64A

19-1 KEY NUMBER

8380 4320
~~8530~~ 4240
 3940

YEAR	KEY NUMBER	LAND	BUILDINGS	TOTAL VALUATION	EXEMPTION	NET VALUE	J. P.	TRANSFERS TO	DATE OF INST'NT	DATE OF TRANSFER	KIND OF INST'NT	ALL OR PART
1957	19, 1,	8,530	3,940	12,470		12,470						
						236.93						
1958	19, 1,	8,530	3,940	12,470		12,470						
						245.66						
1959	19, 1,	8,530	3,940	12,470		12,470						
						253.14						
1960	19, 1,	8,530	3,940	12,470		12,470						
						298.03						
1961	19, 9,100	8,530	4,240	12,770		12,770						
			+300			301.37						
1962	19, 1,	8,380	4,320	12,700		12,700						
						309.88						
1963	19, 1,	8,380	4,320	12,700		12,700						
						314.96						
1964	19, 1,	8,380	4,320	12,700		12,700						
						331.47						

FORM PRESCRIBED BY STATE BOARD OF ACCOUNTS
 COUNTY FORM NO. TA 1, 1941.

JONES, ROBERT L. & B. KATHLEEN H&W
 R. L. Box 51
 Lizton, In. 46149

PT W₂ 13-17-2W 1.02A

040-0020-0627-1

EEL RIVER TAXING UNIT

19-1-01 KEY NUMBER

assessed in 73'

YEAR	KEY NUMBER	LAND	BUILDINGS	TOTAL VALUATION	EXEMPTION	NET VALUE	J. P.	TRANSFERS TO	DATE OF INST'NT	DATE OF TRANSFER	KIND OF INST'NT	ALL OR PART
1 1973	19-1-1	650	3,500	4,150	1,000	3,150		HOLT HENRY W. & BARBARA M. H&W R# 1 BOX 51 LIZTON IND. 46149	4-29-77	5-3-77	WD	ALL
2												
3												
4												
5 1974												
6												
7												
8												
9 1975												
10												
11												
12												
13 1976												
14												
15												
16												
17 1977												
18												
19												
20												
21 1978												
22												
23												
24												
25 1979												
26												
27												
28												
29 1980												
30												
31												
32												

FORM PRESCRIBED BY STATE BOARD OF ACCOUNTS
 COUNTY FORM NO. TA 1, 1941.

REAL ESTATE VALUATION AND TRANSFER RECORD
 HENDRICKS COUNTY, INDIANA

CANADA, IVAN E. & OLIVE J.
 R 2
 Jamestown, Ind 46117

NE NW 13-17-2W ~~40.00A~~ 40.187 by survey
 40.00A.

046-0020-0632-6
 EEL RIVER TAXING UNIT
 19-2 KEY NUMBER

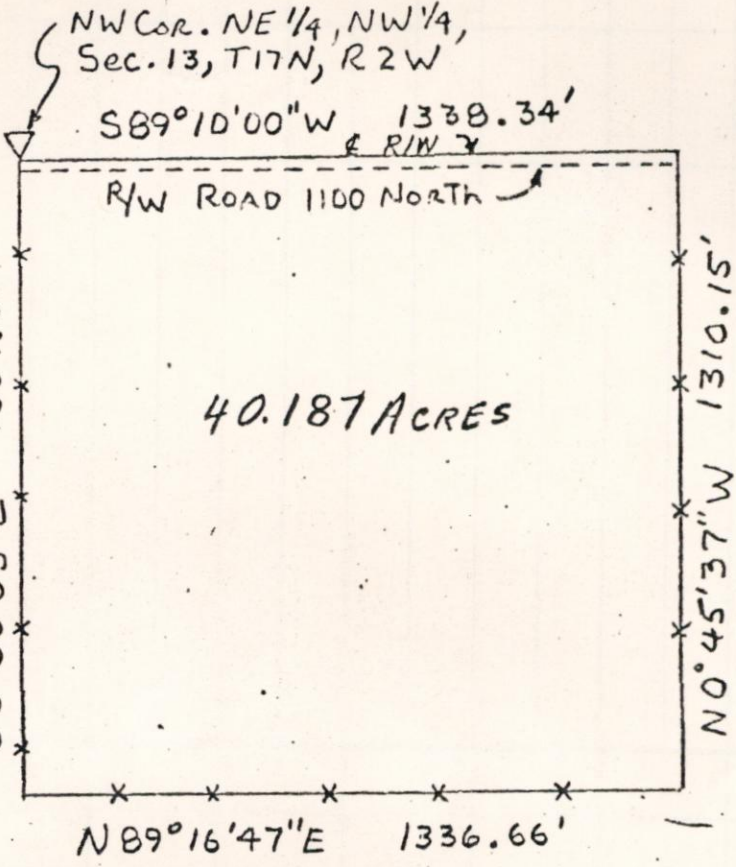
Assess in 1973

YEAR	KEY NUMBER	LAND	BUILDINGS	TOTAL VALUATION	EXEMPTION	NET VALUE	J. P.	TRANSFERS TO	DATE OF INST'NT	DATE OF TRANSFER	KIND OF INST'NT	ALL OR PART
1973	19-2	2,070	510	2,580		2,580		LANDRUM MICHAEL L. , LANDRUM MARK C. & MYRON S.	10-18-77	10-19-77	QCD	ALL
1974								LANDRUM MICHAEL L. , LANDRUM MARK C. AND MYRON S.	10-18-77	10-19-77	WD	ALL
								RP# 1 JAMESTOWN IND \$ 1.50				
1975												
1976												
1977												
1978												
1979												
1980												

FORM PRESCRIBED BY STATE BOARD OF ACCOUNTS
 COUNTY FORM NO. TA 1, 1941.

32	
31	
30	
29	
28	
27	
26	
25	
24	
23	
22	
21	
20	
19	
18	
17	
16	
15	
14	
13	
12	
11	
10	
9	
8	
7	
6	
5	
4	
3	
2	
1	

WILLIAM K. ELSEY, INC.
 LAND SURVEYING-ENGINEERING
 600 EAST NOBLE STREET
 LEBANON, INDIANA 46052
 WILLIAM K. ELSEY, L.S., P.E.
 PRESIDENT



SCALE 1"=400'

-x-x-x-x-x = FENCE LINE

THIS IS TO CERTIFY that the following is a true and correct description of the above Plat:

The Northeast Quarter of the Northwest Quarter of Section 13 Township 17 North Range 2 West situated in Eel River Township, Hendricks County, Indiana, and being more particularly described as follows, to-wit:

Beginning at the Northwest corner of the Northeast Quarter of the Northwest Quarter of Section 13, Township and Range aforesaid; proceed South 0 degree 50 minutes 03 seconds East along the West line of said Quarter-Quarter Section and an existing fence for a distance of 1307.51 feet; thence North 89 degrees 16 minutes 47 seconds East along the South line of said Quarter-Quarter Section line and an existing fence for a distance of 1336.66 feet; thence North 0 degrees 45 minutes 37 seconds West along the East line of said Quarter-Quarter Section line and an existing fence for a distance of 1310.15 feet to the centerline of the right-of-way for Road 1100 North (County line Road); thence South 89 degrees 10 minutes 00 seconds West along said centerline of the right-of-way for a distance of 1338.34 feet to the point of beginning, containing 40.187 acres, more or less. Subject, however, to all public highways, legal rights-of-way and easements of record.

DATE: November 1, 1972
 #720809

William K. Elsey
 REGISTERED ENGINEER NO. 9241 INDIANA
 REGISTERED LAND SURVEYOR NO. 9934 INDIANA



32	
31	
30	
29	
28	
27	
26	
25	
24	
23	
22	
21	
20	
19	
18	
17	
16	
15	
14	
13	
12	
11	
10	
9	
8	
7	
6	
5	
4	
3	
2	
1	

DALE, Buell W.

EEL RIVER TAXING UNIT

NE NW 13-17-2W 40.00A
 SW NE 13-17-2W 40.00A

19-2 KEY NUMBER
 19-5

3590 340
~~2900~~ ~~650~~

YEAR	KEY NUMBER	LAND	BUILDINGS	TOTAL VALUATION	EXEMPTION	NET VALUE	J. P.	TRANSFERS TO	DATE OF INST'NT	DATE OF TRANSFER	KIND OF INST'NT	ALL OR PART
1957	19, 2,	2,900	650	3,550		3,550						
1958	19, 2,	2,900	650	3,550		^{67.45} 3,550						
1959	19, 2,	2,900	650	3,550		^{69.94} 3,550						
1960	19,2	2,900	650	3,550		^{72.07} 3,550						
1961	19, 10,100	2,900	650	3,550		^{84.84} 3,550						
1962	19, 2,	3,590	340	3,930		^{83.78} 3,930						
1963	19, 2,	3,590	340	3,930		^{95.89} 3,930						
1964	19, 2,	3,590	340	3,930		^{97.46} 3,930						
1965	19, 2,	3,590	340	3,930		^{102.57} 3,930						

FORM PRESCRIBED BY STATE BOARD OF ACCOUNTS
 COUNTY FORM NO. TA 1, 1941.

REAL ESTATE VALUATION AND TRANSFER RECORD
 HENDRICKS COUNTY, INDIANA

DALE, BUELL W
 LANDRUM, CALVIN & AMERICA P.

~~NE NW 13-17-2W 40.00A~~
 SW NE 13-17-2W 40.00A

0400020-0647-6

EEL RIVER TAXING UNIT
~~19-2~~
 19-5 KEY NUMBER

3590 340

YEAR	KEY NUMBER	LAND	BUILDINGS	TOTAL VALUATION	EXEMPTION	NET VALUE	J. P.	TRANSFERS TO	DATE OF INST'NT	DATE OF TRANSFER	KIND OF INST'NT	ALL OR PART
1965	19, 2	3,590	340	3,930		3,930	40.00	CANADA, Ivan E. Olive J. (H&W) LANDRUM, Calvin & America (H&W)	1/11/73	1/13/73	WD	Pt.
1966	19, 2	3,590	340	3,930	1,000	2,930						
1967	19, 2	3,590	340	3,930	1,000	2,930						
1968	19, 2	3,590	340	3,930	1,000	2,930						
1969	19, 2	4,200	510	4,710	1,000	3,710						
1970	19, 2	4,200	510	4,710	1,000	3,710						
1971	19, 2	4,200	510	4,710	1,000	3,710						
1972	19, 2	4,200	510	4,710		4,710						

FORM PRESCRIBED BY STATE BOARD OF ACCOUNTS
 COUNTY FORM NO. 19-5

2,300 2,300 100,000 1,300

INDIANA STATE HIGHWAY

PT NW NE 13-17-2W 0.946A

EEL RIVER TAXING UNIT

19-3-01 KEY NUMBER

YEAR	KEY NUMBER	LAND	BUILDINGS	TOTAL VALUATION	EXEMPTION	NET VALUE	J. P.	TRANSFERS TO	DATE OF INST'NT	DATE OF TRANSFER	KIND OF INST'NT	ALL OR PART
1	1965											1
2												2
3												3
4												4
5	1966											5
6												6
7												7
8			NONTAXABLE									8
9	1967											9
10												10
11												11
12												12
13	1968											13
14												14
15												15
16												16
17	1969											17
18												18
19												19
20												20
21	1970											21
22												22
23												23
24												24
25	1971											25
26												26
27												27
28												28
29	1972											29
30												30
31												31
32												32

FORM PRESCRIBED BY STATE BOARD OF ACCOUNTS
COUNTY FORM NO. TA 1, 1941.

REAL ESTATE VALUATION AND TRANSFER RECORD
HENDRICKS COUNTY, INDIANA

40

YEAR	KEY NUMBER	LAND	BUILDINGS	TOTAL VALUATION	EXEMPTION	NET VALUE	J. P.	TRANSFERS TO	DATE OF INST'NT	DATE OF TRANSFER	KIND OF INST'NT	ALL OR PART
1	1957											1
2												2
3												3
4												4
5	1958											5
6												6
7												7
8												8
9	1959											9
10												10
11												11
12												12
13	1960											13
14												14
15												15
16												16
17	1961											17
18												18
19												19
20												20
21	1962											21
22												22
23												23
24												24
25	1963											25
26												26
27												27
28												28
29	1964											29
30												30
31												31
32												32

Now Taxable 1963

-40 -40

FORM PRESCRIBED BY STATE BOARD OF ACCOUNTS
COUNTY FORM NO. TA 1, 1941.

~~Sample, Herman S.~~

LANDRUM, CALVIN & AMERICA
R12
Jamestown, In 46147

NW NE 13-17-2W 39.054A

040-0020-0637-9

EEL RIVER TAXING UNIT

19-3 KEY NUMBER

1540

YEAR	KEY NUMBER	LAND	BUILDINGS	TOTAL VALUATION	EXEMPTION	NET VALUE	J. P.	TRANSFERS TO	DATE OF INST'NT	DATE OF TRANSFER	KIND OF INST'NT	ALL OR PART
1965	19, 3	1,560		1,560		1,560		SAMPLE, Herman S.	1/25/66	1/25/66	AFF	ALL
								DALE, Buell W.	1/25/66	1/25/66	EXE D	ALL
1966	19, 3	1,560		1,560		1,560		RUSSELL, James R. & Carolyn S. (H&W)	1/11/73	1/13/73	EXEC D	ALL
								LANDRUM, Calvin & America	1/11/73	1/13/73	WD	ALL
								LANDRUM, Calvin & America	1/11/73	2/9/73	Exec D	ALL
1968	19, 3	1,560		1,560		1,560						
1969	19, 3	1,900		1,900		1,900						
1970	19, 3	1,900		1,900		1,900						
1971	19, 3	1,900		1,900		1,900						
1972	19, 3	1,900		1,900		1,900						
	19-3	1,900		1,900		1,900						

FORM PRESCRIBED BY STATE BOARD OF ACCOUNTS
COUNTY FORM NO. TA 1, 1941.

REAL ESTATE VALUATION AND TRANSFER RECORD
HENDRICKS COUNTY, INDIANA

SAMPLE, Anna K.

EEL RIVER TAXING UNIT

NW NE 13-17-2W 40.00A

19-3 KEY NUMBER

39.054

1560
+600
+510

YEAR	KEY NUMBER	LAND	BUILDINGS	TOTAL VALUATION	EXEMPTION	NET VALUE	J. P.	TRANSFERS TO	DATE OF INST'NT	DATE OF TRANSFER	KIND OF INST'NT	ALL OR PART
1957	19, 3,	1,510		1,510	750	760	.946	INDIANA STATE HIGHWAY	10/17/62	1/15/63	RWG	Pt
1958	19, 3,	1,510		1,510	750	760						
1959	19, 3,	1,510		1,510	750	760						
1960	19, 3	1,510		1,510	750	760						
1961	19, 11,100	1,510		1,510	750	760						
1962	19, 3,	1,600		1,600	770	830						
1963	19, 3,	1,560		1,560	770	790						
1964	19, 3,	1,560		1,560	770	790						

FORM PRESCRIBED BY STATE BOARD OF ACCOUNTS
COUNTY FORM NO. TA 1, 1941.

REAL ESTATE VALUATION AND TRANSFER RECORD
HENDRICKS COUNTY, INDIANA

YEAR	KEY NUMBER	LAND	BUILDINGS	TOTAL VALUATION	EXEMPTION	NET VALUE	J. P.	TRANSFERS TO	DATE OF INST'NT	DATE OF TRANSFER	KIND OF INST'NT	ALL OR PART
1965												
1966												
1967		NON TAXABLE										
1968												
1969												
1970												
1971												
1972												

FORM PRESCRIBED BY STATE BOARD OF ACCOUNTS
 COUNTY FORM NO. TA 1, 1941.

Non-Taxable

YEAR	KEY NUMBER	LAND	BUILDINGS	TOTAL VALUATION	EXEMPTION	NET VALUE	J. P.	TRANSFERS TO	DATE OF INST'NT	DATE OF TRANSFER	KIND OF INST'NT	ALL OR PART
1	1957											
2												
3												
4												
5	1958											
6												
7												
8												
9	1959											
10												
11												
12												
13	1960											
14												
15												
16												
17	1961											
18												
19												
20												
21	1962											
22												
23												
24												
25	1963											
26												
27												
28												
29	1964											
30												
31												
32												

Non Taxable

WILSON, IRVEN & ELIZABETH KATHRYN
 R 1
 Jamestown, In 46147

NE NE 13-17-2W 34.571A

040-0020-0642-3

EEL RIVER TAXING UNIT

19-4 KEY NUMBER

1390 1700

YEAR	KEY NUMBER	LAND	BUILDINGS	TOTAL VALUATION	EXEMPTION	NET VALUE	J. P.	TRANSFERS TO	DATE OF INST'NT	DATE OF TRANSFER	KIND OF INST'NT	ALL OR PART
1965	19, 4	1,390	1,700	3,090	1,000	2,090		WILSON, ELIZABETH KATHERYN RR#1, BOX 126, JAMESTOWN, INDIANA	2/17/87 46147	2/17/87	AFF	ALL
1966	19, 4	1,390	1,700	3,090	1,000	2,090						
1967	19, 4	1,390	1,700	3,090	1,000	2,090						
1968	19, 4	1,390	1,700	3,090	1,000	3,090						
1969	19, 4	2,090	1,850	3,940	1,000	2,940						
1970	19, 4	2,090	1,850	3,940	1,000	2,940						
1971	19, 4	2,090	1,850	3,940	1,000	3,940						
1972	19, 4	2,090	1,850	3,940	1,000	3,940						

FORM PRESCRIBED BY STATE BOARD OF ACCOUNTS
 COUNTY FORM NO. TA 19-4

2,090 1,850 3,940 1,000 2,940

NE NE 13-17-2W ~~40.00A~~
34.571

1390
~~1640~~
1590
1390
1700
~~1040~~

for P. W. S. in 1963 - 250 in 1963

YEAR	KEY NUMBER	LAND	BUILDINGS	TOTAL VALUATION	EXEMPTION	NET VALUE	J. P.	TRANSFERS TO	DATE OF INST'NT	DATE OF TRANSFER	KIND OF INST'NT	ALL OR PART
1957	19, 4,	1,590	1,040	2,630	1,000	1,630	5.429	INDIANA STATE HIGHWAY	11/7/62	1/25/63	RWG	Pt
1958	19, 4,	1,590	1,040	2,630	1,000	1,630						
1959	19, 4,	1,590	1,040	2,630	1,000	1,630						
1960	19, 4	1,590	1,040	2,630	1,000	1,630						
1961	19, 12,100	1,590	1,040	2,630	1,000	1,630						
1962	19, 4,	1,640	1,700	3,340	1,000	2,340						
1963	19, 4,	1,390	1,700	3,090	1,000	2,090						
1964	19, 4,	1,390	1,700	3,090	1,000	2,090						

FORM PRESCRIBED BY STATE BOARD OF ACCOUNTS
COUNTY FORM NO. TA 1, 1941.

LANDRUM, CALVIN & AMERICA E.

SE NE 13-17-2W 40.0A
PT SE 1/4 13-17-2W 1.00 A

040002006520

EEL RIVER TAXING UNIT
19-6 KEY NUMBER
19-8-01

1510

YEAR	KEY NUMBER	LAND	BUILDINGS	TOTAL VALUATION	EXEMPTION	NET VALUE	J. P.	TRANSFERS TO	DATE OF INST'NT	DATE OF TRANSFER	KIND OF INST'NT	ALL OR PART
1965	19, 6	1,510		1,510		1,510						
1966	19, 6	1,510		1,510		1,510						
1967	19, 6	1,510		1,510		1,510						
1968	19, 6	1,510		1,510		1,510						
1969	19, 6	1,880		1,880		1,880						
1970	19, 6	1,880		1,880		1,880						
1971	19, 6	1,880		1,880		1,880						
1972	19, 6	1,930		1,930		1,930						

FORM PRESCRIBED BY STATE BOARD OF ACCOUNTS
COUNTY FORM NO. TA-19-6

1,930

1,930

1,930

SE NE 13-17-2W. 40.00A

1510
1620

YEAR	KEY NUMBER	LAND	BUILDINGS	TOTAL VALUATION	EXEMPTION	NET VALUE	J. P.	TRANSFERS TO	DATE OF INST'NT	DATE OF TRANSFER	KIND OF INST'NT	ALL OR PART
1957	19, 6,	1,620		1,620	990	630		LANDRUM, Calvin & America E.	1/16/61	1/18/61	WD	ALL
1958	19, 6,	1,620		1,620	990.5E	11.97 1,620						
1959	19, 6,	1,620		1,620	1,620	31.91						
1960	19, 6	1,620		1,620	SE 1620	1,620						
1961	19, 14,100	1,620	810	1,620	810	38.72 810						
1962	19, 6,	1,510		1,510	750	19.12 750						
1963	19, 6,	1,510		1,510	750	18.54 750						
1964	19, 6,	1,510		1,510	750	18.85 750						
1965	19, 6,	1,510		1,510	750	19.84 750						

FORM PRESCRIBED BY STATE BOARD OF ACCOUNTS
COUNTY FORM NO. TA 1, 1941.

SCOTT, FAY
Lizton, In 46149

PT SE 13-17-2W 50.00A

040 0020 06573

EEL RIVER TAXING UNIT

19-7 KEY NUMBER

2460

YEAR	KEY NUMBER	LAND	BUILDINGS	TOTAL VALUATION	EXEMPTION	NET VALUE	J. P.	TRANSFERS TO	DATE OF INST'NT	DATE OF TRANSFER	KIND OF INST'NT	ALL OR PART
1965	19, 7	2,460		2,460		2,460						
1966	19, 7	2,460		2,460		2,460						
1967	19, 7	2,460		2,460		2,460						
1968	19, 7	2,460		2,460		2,460						
1969	19, 7	2,860		2,860		2,860						
1970	19, 7	2,860		2,860		2,860						
1971	19, 7	2,860		2,860		2,860						
1972	19, 7	2,860		2,860		2,860						

FORM PRESCRIBED BY STATE BOARD OF ACCOUNTS
COUNTY FORM NO. TA 197

2,860

2,860

2,860

SCOTT, Fay

040-0020-0657-3

EEL RIVER TAXING UNIT

PT SE 13-17-2W 50.00A

19-7 KEY NUMBER

2460
~~2260~~

YEAR	KEY NUMBER	LAND	BUILDINGS	TOTAL VALUATION	EXEMPTION	NET VALUE	J. P.	TRANSFERS TO	DATE OF INST'NT	DATE OF TRANSFER	KIND OF INST'NT	ALL OR PART
1957	19, 7,	2,260		2,260		2,260		SCOTT, ADELIA & PRITCHETT, JEANNETTE AS TEN IN COMMON	5/7/82	5/11/82	Fin/Dec	ALL
						42.94		1 S Washington St, c/o John Kendall Danville In 46122				
1958	19, 7,	2,260		2,260		2,260						
1959	19, 7,	2,260		2,260		2,260						
1960	19, 7,	2,260		2,260		2,260						
1961	19, 15,100	2,260		2,260		2,260						
1962	19, 7,	2,460		2,460		2,460						
1963	19, 7,	2,460		2,460		2,460						
1964	19, 7,	2,460		2,460		2,460						

FORM PRESCRIBED BY STATE BOARD OF ACCOUNTS
COUNTY FORM NO. TA 1, 1941.

DATE / VALUATION / TAX / AMOUNT /
 1965 / 900 / 19.8 / 11.11
 1966 / 900 / 19.8 / 11.11

16.40
 17.40A
 PT SE 13-17-2W 40.0A

73.90
 16.40
 90.30

040 0020 06628
 EEL RIVER TAXING UNIT
 19-8 KEY NUMBER

900

YEAR	KEY NUMBER	LAND	BUILDINGS	TOTAL VALUATION	EXEMPTION	NET VALUE	J. P.	TRANSFERS TO	DATE OF INST'NT	DATE OF TRANSFER	KIND OF INST'NT	ALL OR PART
1965	19, 8	900		900		900	1.00	LANDRUM, CALVIN & AMERICA E. H&W DALE, HUBERT S. & MARIAN JUNE, AS TENANTS IN COMMON & NOT AS JOINT TENANTS HS & Grant, Ind. In R R 1 BOX 132 JAMESTOWN, IND. 46147	11/9/71	11/12/71	WD	PT
1966	19, 8	900		900		900		R / Box 24 Lizton In. 46149 HC 112				
1967	19, 8	900		900		900						
1968	19, 8	900		900		900						
1969	19, 8	930		930		930						
1970	19, 8	930		930		930						
1971	19, 8	930		930		930						
1972	19, 8	870		870		870						

FORM PRESCRIBED BY BOARD OF ACCOUNTS
 COUNTY FORM NO. TA 17 (1941)

19-8 870 870 870

PT SE 13-17-2W 17.40A

EEL RIVER TAXING UNIT

19-8 KEY NUMBER

900
820

YEAR	KEY NUMBER	LAND	BUILDINGS	TOTAL VALUATION	EXEMPTION	NET VALUE	J. P.	TRANSFERS TO	DATE OF INST'NT	DATE OF TRANSFER	KIND OF INST'NT	ALL OR PART
1957	19, 8,	820		820		820						
						15.58						
1958	19, 8,	820		820		820						
						16.15						
1959	19, 8,	820		820		820						
						16.65						
1960	19, 8,	820		820		820						
						19.60						
1961	19, 16, 100	820		820		820						
						19.35						
1962	19, 8,	900		900		900						
						21.96						
1963	19, 8,	900		900		900						
						22.32						
1964	19, 8,	900		900		900						
						23.49						

FORM PRESCRIBED BY STATE BOARD OF ACCOUNTS
COUNTY FORM NO. TA 1, 1941.

HENDRICKS, JOHN L. & MARY ELIZABETH COMER

1/2 Jackson & Weber (Life Estate)
 120 1/2 E. Main St.
 Crawfordsville, In 47933

PT SW 13-17-2W ^{75.49} ~~77.12A~~
 PT SE SW 13-17-2W .6041A
 PT SE SW 13-17-2W .7859A

040-0020-0667-0

EEL RIVER TAXING UNIT

19-9 KEY NUMBER

19-10-01
 19-13-01

2790 3500

YEAR	KEY NUMBER	LAND	BUILDINGS	TOTAL VALUATION	EXEMPTION	NET VALUE	J. P.	TRANSFERS TO	DATE OF INST'NT	DATE OF TRANSFER	KIND OF INST'NT	ALL OR PART
1965	19, 9	2,790	3,500	6,290		6,290	1.63	MARTIN, EULA ROSE	5/17/74	6/6/74	COM D	PT
1966	19, 9	2,790	3,500	6,290		6,290						
1967	19, 9	2,790	3,500	6,290		6,290						
1968	19, 9	2,790	3,500	6,290		6,290						
1969	19, 9	3,920	3,390	7,310		7,310						
1970	19, 9	3,920	3,390	7,310		7,310						
1971	19, 9	3,920	3,390	7,310		7,310						
1972	19, 9	3,920	3,390	7,310		7,310						

FORM PRESCRIBED BY STATE BOARD OF ACCOUNTS
 COUNTY FORM NO. TA 1979

1919 3,620 2,550 6,170 6,170

PT SW 13-17-2W 77.12A

2790 3500
~~2390~~ 3150

YEAR	KEY NUMBER	LAND	BUILDINGS	TOTAL VALUATION	EXEMPTION	NET VALUE	J. P.	TRANSFERS TO	DATE OF INST'NT	DATE OF TRANSFER	KIND OF INST'NT	ALL OR PART
1957	19, 9,	2,390	3,150	5,540		5,540	1.63	MARTIN, EULA ROSE	5/17/74	6/6/74	COM D	PT
						105.26						
1958	19, 9,	2,390	3,150	5,540		5,540						
						109.14						
1959	19, 9,	2,390	3,150	5,540		5,540						
						112.46						
1960	19, 9	2,390	3,150	5,540		5,540						
						132.41						
1961	19, 17,100	2,390	3,150	5,540		5,540						
						130.74						
1962	19, 9,	2,790	3,500	6,290		6,290						
						153.48						
1963	9, 9,	2,790	3,500	6,290		6,290						
						155.99						
1964	19, 9,	2,790	3,500	6,290		6,290						
						164.17						

FORM PRESCRIBED BY STATE BOARD OF ACCOUNTS
COUNTY FORM NO. TA 1, 1941.

HENDRICKS, JOHN L. & MARY ELIZABETH COMER
 % JACKSON & WEBER
 120½ E. MAIN ST
 CRAWFORDSVILLE, IN 47933

PT SE SW 13-17-2W .6041A
 PT SE SW 13-17-2W .7859A

OWNER OF RECORD

EEL RIVER 19-10-01
 EEL RIVER 19-13-01

Assessed 75'

DATE	KEY NUMBERS	TOTAL VALUE	EXEMPTION	NET VALUE	MAY TAX	NOV. TAX	CURRENT TAX	LIQUIDATION		BALANCES	
								TAX	PENALTY	TAX	PENALTY
1971											
1972											
1973											
1974											
1975											
1976											
TAX	MORATORIUM	DITCH									
ROLL											
PAGE											

*Combined with 19-9
 ref Andy*

MARTIN, EULA ROSE
% Jackson & Weber

P.O. Box 367
Crawfordsville, In 47933

PT SE SW 13-17-2W 35.795 35.795 crossed off in arrow
 PT SE SW 13-17-2W 36.40A
 PT NE SW 13-17-2W 1.10A
 .3105 .3105
 1.63A

040-0020-0677-8

EEL RIVER TAXING UNIT

19-10 KEY NUMBER

19-13
19-9-01

1120

YEAR	KEY NUMBER	LAND	BUILDINGS	TOTAL VALUATION	EXEMPTION	NET VALUE	J. P.	TRANSFERS TO	DATE OF INST'NT	DATE OF TRANSFER	KIND OF INST'NT	ALL OR PART
1964	19, 10,	1,120		1,120		1,120	1.39	HENDRICKS, JOHN L. & MARY ELIZABETH COMER, FOR & DURING THEIR NATURAL LIVES AND IN EQUAL PORTION AND TO THE CHILDREN THEREOF, THEM SURVIVING, SHARE AND SHARE ALIKE	5/27/74	6/6/74	WD	PT
1966	19,10	1,120		1,120		1,120						
1967	19,10	1,120		1,120		1,120						
1968	19,10	1,120		1,120		1,120						
1969	19,10	1,470		1,470		1,470						
1970	19,10	1,470		1,470		1,470						
1971	19,10	1,470	580	2,050		2,050						
1972	19,10	1,470	580	2,050		2,050						

FORM PRESCRIBED BY STATE BOARD OF ACCOUNTS
COUNTY FORM NO. TA 19-10

1,470 580 2,050 2,050

MARTIN, Eula Rose

PT SE SW 13-17-2W 36.40A
 PT SE SW 13-17-2W 1.10A

EEL RIVER TAXING UNIT

19-10 KEY NUMBER

19-13

1120
~~950~~

YEAR	KEY NUMBER	LAND	BUILDINGS	TOTAL VALUATION	EXEMPTION	NET VALUE	J. P.	TRANSFERS TO	DATE OF INST'NT	DATE OF TRANSFER	KIND OF INST'NT	ALL OR PART
1957	19, 10,	950		950		950						
						18.05						
1958	19, 10,	950		950		950						
						18.72						
1959	19, 10,	950		950		950						
						19.29						
1960	19,10	950		950		950						
						22.71						
1961	19, 18,100	950		950		950						
						22.42						
1962	19, 10,	1,120		1,120		1,120						
						27.33						
1963	19, 10,	1,120		1,120		1,120						
						27.78						
1964	19, 10,	1,120		1,120		1,120						
						29.23						

FORM PRESCRIBED BY STATE BOARD OF ACCOUNTS
 COUNTY FORM NO. TA 1, 1941.

REAL ESTATE VALUATION AND TRANSFER RECORD
 HENDRICKS COUNTY, INDIANA

MARTIN, EULA ROSE
 % JACKSON & WEBER
 120½ E. MAIN ST
 CRAWFORDSVILLE, IN 47933

PT NE SW 13-17-2W 1.63A

OWNER OF RECORD

EEL RIVER 19-9-01

Assessor 75'

DATE	KEY NUMBERS	TOTAL VALUE	EXEMPTION	NET VALUE	MAY TAX	NOV. TAX	CURRENT TAX	LIQUIDATION		BALANCES	
								TAX	PENALTY	TAX	PENALTY
1971											
1972											
1973											
1974											
1975											
1976											
TAX	MORATORIUM		DITCH								
ROLL											
PAGE											

*Combined with 19-10
 Ref. only*

FORM PRESCRIBED BY THE STATE BOARD OF ACCOUNTS
 COUNTY FORM TA 3, 1941

**CURRENT REAL ESTATE TAX LEDGER
 HENDRICKS COUNTY, INDIANA**

SCOTT, ADELIA
Lizton, In 46149

65.81A.
PR SE 13-17-2W 66.90A
PT SW SE 13-17-2W 1.20A

040-0020-0687-5
EEL RIVER TAXING UNIT
19-11 KEY NUMBER
19-14

3190 2230

YEAR	KEY NUMBER	LAND	BUILDINGS	TOTAL VALUATION	EXEMPTION	NET VALUE	J. P.	TRANSFERS TO	DATE OF INST'NT	DATE OF TRANSFER	KIND OF INST'NT	ALL OR PART
1965	19, 11,	3,190	2,230	5,420		5,420	1.09A	WARNER, MICHAEL D. & DOTTIE L. H&W (19-11-01)	1/27/86	1/27/86	WD	PT
1966	19,11	3,190	2,230	5,420		5,420						
1967	19,11	3,190	2,230	5,420		5,420						
1968	19,11	3,190	2,230	5,420		5,420						
1969	19,11	4,080	2,460	6,540		6,540						
1970	19,11	4,080	2,460	6,540		6,540						
1971	19,11	4,080	2,460	6,540		6,540						
1972	19,11	4,080	2,460	6,540		6,540						

FORM PRESCRIBED BY STATE BOARD OF ACCOUNTS
COUNTY FORM NO. TA 1, 1941.

19-11 4,080 2,460 6,540 6,540

SCOTT, Fay / Adelia M.

EEL RIVER TAXING UNIT

PT SE 13-17-2W 66.90A
PT SW SE 13-17-2W 1.20A

19-11 KEY NUMBER
19-14

3190 2230
3110 1630

YEAR	KEY NUMBER	LAND	BUILDINGS	TOTAL VALUATION	EXEMPTION	NET VALUE	J. P.	TRANSFERS TO	DATE OF INST'NT	DATE OF TRANSFER	KIND OF INST'NT	ALL OR PART
1957	19, 11,	3,110	1,630	4,740		4,740		SCOTT, Adelia	1/9/64	2/3/64	AFF	ALL
1958	19, 11,	3,110	1,630	4,740		90.06 4,740						
1959	19, 11,	3,110	1,630	4,740		93.38 4,740						
1960	19, 11,	3,110	1,630	4,740		96.22 4,740						
1961	19, 19, 100	3,110	1,630	4,740		113.29 4,740						
1962	19, 11,	3,190	2,230	5,420		111.86 5,420						
1963	19, 11,	3,190	2,230	5,420		132.25 5,420						
1964	19, 11,	3,190	2,230	5,420		134.42 5,420						
1965	19, 11,	3,190	2,230	5,420		141.46 5,420						

FORM PRESCRIBED BY STATE BOARD OF ACCOUNTS
COUNTY FORM NO. TA 1, 1941.

NAME WARNER, MICHAEL D. & DOTTIE L. H&W

R R 1 BOX 250
LIZTON IN 46149

ADDRESS _____

Taxing Unit EEL RIVER

Key Number 19-11-01

PT SE¹/₄ 13-17-2W 1.09A

DESCRIPTION

Parcel Number

1/27/86 WD

Assess 86'

TRANSFERS TO	DATE OF INST'NT	DATE OF TRANSFER	KIND OF INST'NT	ALL OR PART	TRANSFERS TO	DATE OF INST'NT	DATE OF TRANSFER	KIND OF INST'NT	ALL OR PART

PRITCHETT, JEANNETTE

~~1971/1971/1971~~

PT SE 13-17-2W ^{20.17} ~~20.50A~~

040-0020-0693-4

EEL-RIVER TAXING UNIT

19-12 KEY NUMBER

1010

YEAR	KEY NUMBER	LAND	BUILDINGS	TOTAL VALUATION	EXEMPTION	NET VALUE	J. P.	TRANSFERS TO	DATE OF INST'NT	DATE OF TRANSFER	KIND OF INST'NT	ALL OR PART
1965	19, 12,	1,010		1,010		1,010		SMITH, Milburn F. & JOHNSON, Elsie M. 1/2 interest each	2/7/66	2/7/66	Fi Dec	all
								HINES, DONALD & LUCILLE	1/5/70	1/5/70	WD	ALL
1966	19,12	1,010		1,010		1,010		20.17 PRITCHETT, JEANNETTE	2/17/70	4/8/70	WD	ALL
1967	19,12	1,010		1,010		1,010						
1968	19,12	1,010		1,010		1,010						
1969	19,12	1,130		1,130		1,130						
1970	19,12	1,130		1,130		1,130						
1971	19,12	1,130		1,130		1,130						
1972	19,12	1,130		1,130		1,130						

FORM PRESCRIBED BY STATE BOARD OF ACCOUNTS
COUNTY FORM NO. TA 1, 1941

19-12

1,130

1,130

1,130

SMITH, David F.

PT SE 13-17-2W 20.50A

EEL RIVER TAXING UNIT

19-12 KEY NUMBER

1010
~~1030~~

YEAR	KEY NUMBER	LAND	BUILDINGS	TOTAL VALUATION	EXEMPTION	NET VALUE	J. P.	TRANSFERS TO	DATE OF INST'NT	DATE OF TRANSFER	KIND OF INST'NT	ALL OR PART
1957	19, 12,	1,030		1,030		1,030						
1958	19, 12,	1,030		1,030		1,030						
1959	19, 12,	1,030		1,030		1,030						
1960	19, 12,	1,030		1,030		1,030						
1961	19, 20, 100	1,030		1,030		1,030						
1962	19, 12,	1,010		1,010		1,010						
1963	19, 12,	1,010		1,010		1,010						
1964	19, 12,	1,010		1,010		1,010						

FORM PRESCRIBED BY STATE BOARD OF ACCOUNTS
COUNTY FORM NO. TA 1, 1941.

BEN HUR FARM, INC.

PT SE 13-17-2W 4.0 A

040-0020-0698-7

EEL RIVER TAXING UNIT

P.O. Box 1
Jamestown, In 46117

19-15 KEY NUMBER

210

YEAR	KEY NUMBER	LAND	BUILDINGS	TOTAL VALUATION	EXEMPTION	NET VALUE	J. P.	TRANSFERS TO	DATE OF INST'NT	DATE OF TRANSFER	KIND OF INST'NT	ALL OR PART
1965	19, 15,	210		210		210		JOHN HANCOCK MUTUAL LIFE INSURANCE CO. 505 ROBESON BLDG, 206 N. RANDOLPH ST, CHAMPAIGN IL 61820	5/26/83	6/13/83	SHRF D	ALL
1966	19,15	210		210		210						
1967	19,15	210		210		210						
1968	19,15	210		210		210						
1969	19,15	210		210		210						
1970	19,15	210		210		210						
1971	19,15	210		210		210						
1972	19,15	210		210		210						
		210		210		210						

FORM PRESCRIBED BY BOARD OF ACCOUNTS
COUNTY FORM NO. TA 1, 1941.

ROBERTS, J. Marshall & Dorothy

PT SE 13-17-2W 4.00A

EEL RIVER TAXING UNIT

19-15 KEY NUMBER

210
60

YEAR	KEY NUMBER	LAND	BUILDINGS	TOTAL VALUATION	EXEMPTION	NET VALUE	J. P.	TRANSFERS TO	DATE OF INST'NT	DATE OF TRANSFER	KIND OF INST'NT	ALL OR PART
1957	19, 15,	60		60		60		BEN HUR FARM, INC.	1/3/61	1/25/61	W ^D	ALL
						1.14						
1958	19, 15,	60		60		60						
						1.18						
1959	19, 15,	60		60		60						
						1.22						
1960	19,15	60		60		60						
						1.43						
1961	19, 23,100	60		60		60						
						1.42						
1962	19, 15,	210		210		210						
						5.12						
1963	9, 15,	210		210		210						
						5.21						
1964	19, 15,	210		210		210						
						5.48						

FORM PRESCRIBED BY STATE BOARD OF ACCOUNTS
COUNTY FORM NO. TA 1, 1941.

REAL ESTATE VALUATION AND TRANSFER RECORD
HENDRICKS COUNTY, INDIANA