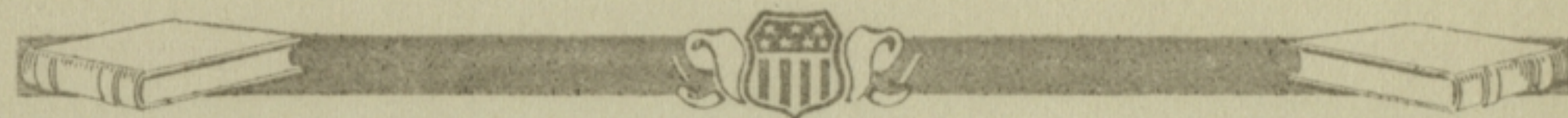
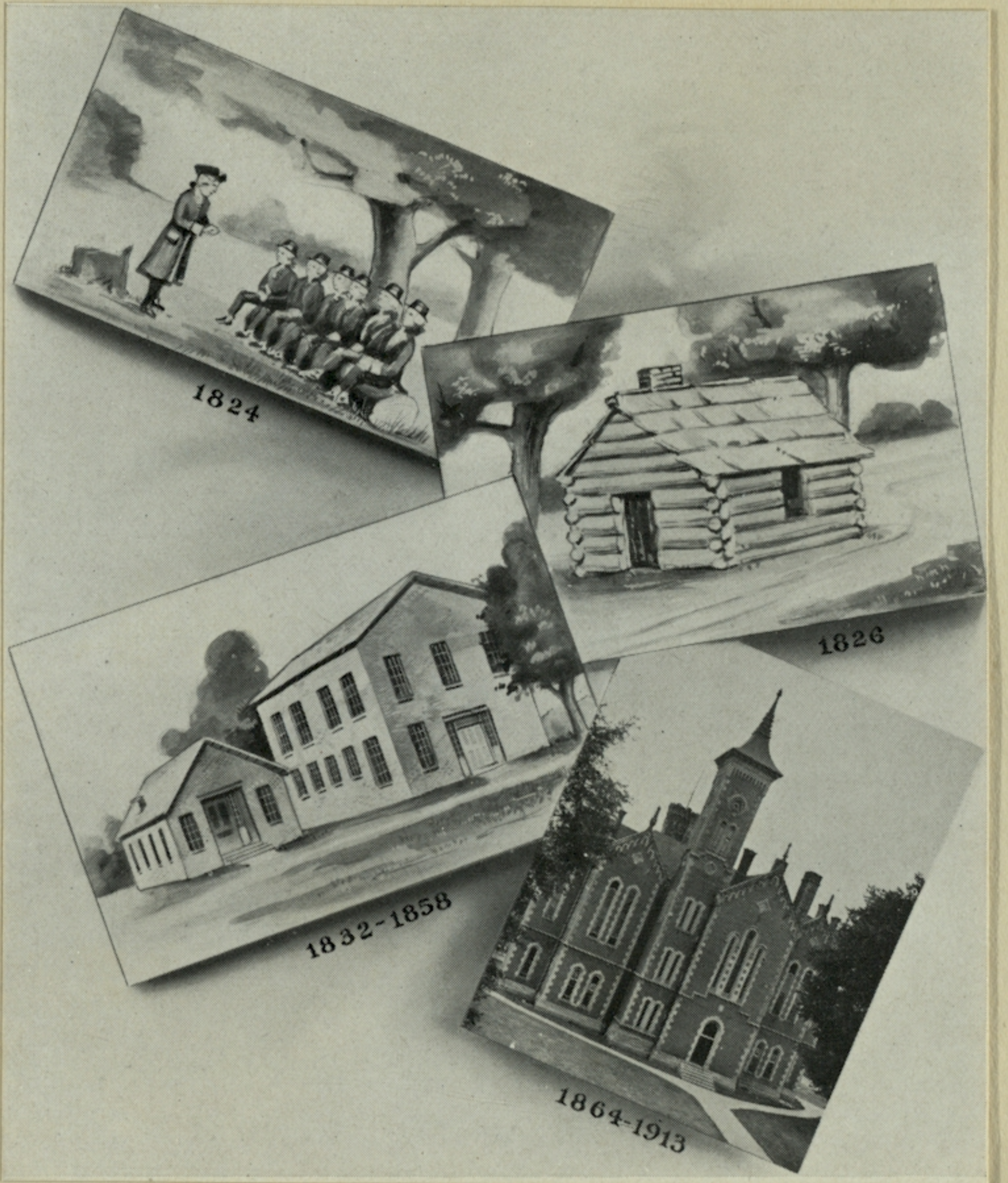
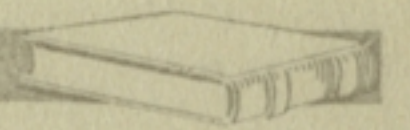
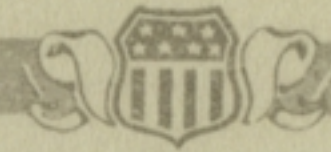
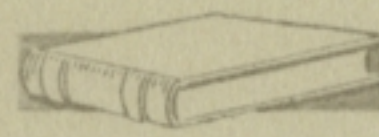
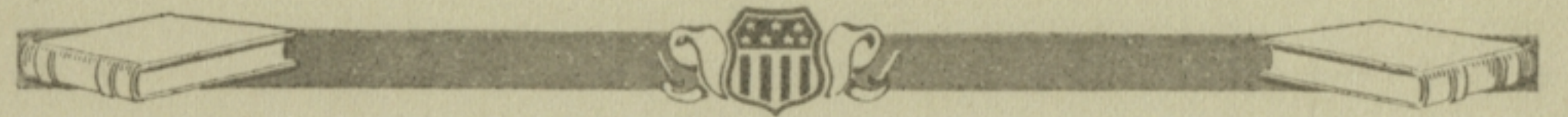


*The Citizens of Hendricks County
extend to you a cordial invitation
to be present at the dedication
of the new
Hendricks County Court House
at Danville, Indiana
Wednesday, September the eighth
Nineteen hundred and fifteen*







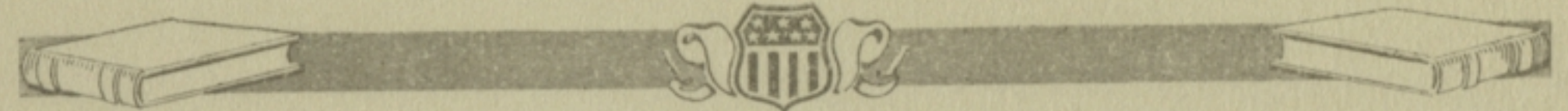
General Program

52

- 9:30 a. m. Formal Opening of Building.
10:30 a. m. Automobile Parade.
12:00 m. Lunch.
2:00 p. m. Dedication Exercises.

Judge John V. Hadley, *Master of Ceremonies*

Address--Vice-President Thomas R.
Marshall.



The New Hendricks County Court House

IN DESIGNING the new Hendricks County Court House, the architect selected Grecian Doric style and the Bedford Oolitic stone for the exterior of the building. ¶ All four of the sides are equally emphasized, the only difference being the additional length of the north and south elevations. Each elevation has a large pediment, supported by pilasters and columns. The building is three stories high, the first story being rusticated and projecting beyond the stories above, giving the appearance of a pedestal for the other two stories. ¶ The building has been designed in monumental proportions, and yet no practical or utilitarian features have been neglected to produce this effect. With the exception of the offices for the sheriff and the assessor, the entire first floor is given over to the use of the public for their comfort and convenience. The second floor contains the four main county officials, namely, the auditor, treasurer, clerk and recorder, with the office of the county commissioners approximate to that of the county auditor, with whom he comes in close contact. The third floor is used for court rooms, dormitories, private offices for the Court and county surveyor. ¶ The architect has striven to produce a building that not only would be beautiful, but well lighted and ventilated. The public may judge for themselves how well he succeeded in his efforts. Although the building has been built but a short time, its reputation has extended beyond the state as being one of the handsomest buildings, for the amount of money spent, in Indiana. ¶ The architect for this work was Clarence Martindale of Indianapolis. The contractors were P. H. McCormack & Co. of Columbus. The work was started under the former board consisting of James A. Downard, Elbert M. Murphy and Harry E. Sanders, county commissioners, and Edgar M. Blessing, county attorney, and completed under the present board.



County Officials.

George W. Brill, Judge.
L. A. Barnett, Prosecuting Attorney.
Charles E. Edwards, Clerk.
J. W. Gentry, Sheriff.
Lewis W. Borders, Auditor.
George Macomber, Treasurer.
John A. Flynn, Recorder.
Theodore W. Garrison, Surveyor
Robert M. Shirley, Assessor.
Dr. Bert M. O'Brien, Coroner.

Henry S. Cox, John P. Moran, Harry E. Sanders, *Commissioners*

Theodore T. Martin, Supt. of Schools.
Drenan R. Harvey, County Attorney.
John Lindsey, Road Seperintendent.
A. W. Orr, Agricultural Agent.
Dr. G. N. Wickwire, of U. S. Experiment Station.

Charles L. Mendenhall, Representative.

COUNTY COUNCIL

<i>New</i>	Joshua Tharp	<i>Old</i>	John Vestal
	John Vestal		Charlie Kurtz
	Wm. H. Stephenson		Tolliver Worrell
	Arthur Davis		W. D. Corrie
	Wm. H. Elrod		D. W. Carter
	W. E. Christie		Geo. R. Blake
	John W. Ader		Claude Boyd

DEDICATION COMMITTEE

Judge Geo. W. Brill, *Chairman* Alvin Hall, *Secretary*
George W. Searce, Otis E. Gulley, Lewis W. Borders,
Horace G. Miles, George A. Keeney