

CORNERSTONE  
TWP 14N RANGE 1E

Township No 14 North.

6	15	5	12	4	10	3	8	2	6	1	2
13	15		12		11		8		5		
7	15	8	12	9	10	10	7	11	5	12	1
4) 5100	15		12		9		7		5		
18	14	17	11	16	9	15	7	14	5	13	1
14	14		11		9		7		5		
19	14	20	11	21	9	22	7	23	4	24	1
13	13		11		9		6		4		
30	13	24	11	28	8	27	6	26	4	25	1
13	13		10		8		6		4		
31	12	32	10	33	8	34	6	35	4	36	1
2	2		2		3		3		3		

Range No 1 East.

County Line

Township No 14 North, Range No 1 East, 2<sup>d</sup> meridian Indiana. Transcribed by S. D. Harvey 1870

Range line.

Variation 6.28 E.

Chains & links

North Between Ranges 1 & 2 East, Town 14 North, on East side of Sec. 36. T. 14 N. R. 1 East.

- 19.65 a Sugar 21 in. Diameter.
- 40.00 1/4<sup>th</sup> Section corner from which a Beech 21 in. Dr. bears S. 45° W. 16 links an Elm 15 in. " " N. 21° E. 13 "
- 44.40 a poplar 30 in. Diameter.
- 53.50 a Brook 54 links wide Co. S. W.
- 79.50 a Creek 75 " " " S. W.
- 80.00 Post cor. of Sec. 25 & 36. fr. which a Box Elder 7 in. Dr. bears N. 46° W. 25.5 an Elm 24 in. " " S. 16° E. 50.5.

North On East side of Section 25.

- 21.35 a Sugar 18 in. Diameter.
- 40.00 1/4<sup>th</sup> Section corner from which an Elm 9 in. Dr. bears N. 53° W. 7 links a Sugar 10 in. " " S. 68° E. 15 "
- 43.30 a Hackberry 20 in. Diameter
- 80.00 Set Post cor. of Sec. 21 & 25. fr. which a Beech 24 in. Dr. bears S. 60° E. 54 links a Hackberry 20 in. " " N. 34° W. 25 "

Chains & links

North On East side of Sec. 24.

- 25.20 a Branch 6 links wide Co. S. E.
- 28.08 a Beech 14 in. Diameter.
- 40.00 1/4<sup>th</sup> Section corner from which a Beech 27 in. Dr. bears S. 40° W. 15 links an Elm 15 in. " " N. 55° 36' E. 33 "
- 48.20 a Branch 7 links wide Co. S. E.
- 52.75 a W. Oak 40 in. Diameter
- 80.00 Set Post cor. of Sec. 13 & 14. fr. which a Beech 7 in. Dr. bears S. 27° E. 14 links a Gum 20 in. " " N. 33° W. 12 "

North On East boundary of Sec. 13.

- 14.75 a Beech 15 in. Diameter.
- 28.75 a Branch 5 links wide Co. East.
- 40.00 1/4<sup>th</sup> Section corner from which a Beech 21 in. Dr. bears S. 15° W. 7 links an Ash 11 in. " " N. 80° E. 24 "
- 64.90 a Beech 14 in. Diameter
- 80.00 Post cor. of Sec. 17 & 18. an Ash 36 in. Dr. bears S. 75° E. 6 links a Hackberry 14 in. " " S. 66° W. 20 "

Rolling lands good Sugar Walnut etc

Rolling lands good Sugar Walnut etc

Name as before.

North On the East side of Sec. 12.  
 18.70 a Hickory 10 in. Diameter  
 40.00 qtr. Section corner  
 an Elm 9 in. do. S. 22° W. 30 links  
 a Swamp Ash 10 in. N. 40° E. 6. "  
 57.80 a W. Oak 36 in. Diameter.  
 6.00 Post Cor. of Sec. 11 & 12.  
 a Beech 21 in. do. N. 56° W. 26 links  
 a Sugar 9. " " N. 35° E. 16. "

North On East Side of Section 1.  
 18.00 a Hickory 24 in. Diameter.  
 40.00 qtr. Section corner  
 a W. Oak 6 in. do. " S. 40° W. 21 L.  
 a Sugar 12 in. " " N. 67° E. 25 L.  
 77.00 Post Cor. of Towns 14 & 15. N. R. 1 & 3 East.  
 a Sugar 10 in. do. do. S. 17° W. 36 links  
 an Elm 14 in. " " N. 10° E. 26. "

August 12<sup>th</sup> 1819

Town Line  
 Variation 6. 45. E.

East Between Towns 13 & 14 North, Range 1 East,  
 on South side of Sec. 31. T. 14. N. R. 1 E.  
 1.10 qtr. Section corner  
 a Beech 25 in. do. do. N. 56° E. 28 links  
 a Do. 10. " " " N. 57° W. 26. "  
 3.62 a Walnut 33 in Diameter  
 41.00 Set Post Cor. to Sec. 31 & 32.  
 a Hackberry 21 in. do. do. N. 25° W. 7 L.  
 a Do. 14 in. " " S. 32° E. 27 L.

East On South side of Section 32.  
 3.00 a Branch 4 links wide Co. N. E.  
 27.33 a W. Oak 33 in. Diameter  
 40.00 qtr. Section corner  
 a Beech 24 in. do. do. N. 13° W. 11 L.  
 an Ash 7 in. " " S. 72° E. 15. L.  
 58.00 a branch 12 links wide Co. N. W.  
 80.00 Set Post Cor. of Sec. 32 & 33.  
 a Hickory 18 in. do. do. N. 48° E. 4 L.  
 a Walnut 27 in. " " S. 58° W. 20 L.

East On South side of Sec. 33.  
 40.00 qtr. Section corner  
 a Sugar 14 in. do. do. N. 5° W. 10 L.

Sand good gently rolling Beech  
 Ash Sugar Oak Swampy Spruce

Level Sand, Soil good  
 Beech Ash Sugar Spruce

Rich rolling land  
 Sugar Hackberry Poplar  
 Spice

Land and timber the same

a Spicamore 7 in. do. do. S. 29° W. 25 L.  
 40.69 a Hickory 24 in. Diameter  
 57.00 a branch 6 links wide Co South.  
 75.50 a branch 4. " " " North.  
 80.00 Set Post Cor. of Sec. 33 & 34.  
 a Cottonwood 24 in. do. do. S. 25° W. 5 links  
 a Beech 8 in. " " N. 11° W. 15. "

East On the South side of Section 34.  
 18.11 a Sugar 24 in. Diameter.  
 40.00 qtr. Section corner  
 a Beech 20 in. do. do. N. 58° E. 24 L.  
 a Poplar 20 in. " " S. 20° E. 23 L.  
 62.54 a Poplar 50 in. Diameter  
 65.00 a branch 15 links wide Co. N. E.  
 80.00 Set Post Cor. of Sec. 34 & 35.  
 a Sugar 7 in. do. do. S. 57° W. 10 L.  
 a Do. 5. " " " N. 47° W. 18. L. July 5<sup>th</sup> 1819.

East On South Side of Section 35.  
 20.53 an Oak 18 in. Diameter.  
 37.50 a branch 4 links wide Co. N. E.  
 40.00 qtr. Section corner  
 a Sugar 7 in. do. do. S. 65° E. 3 links  
 a Do. 5. " " " N. 25° W. 14. L.  
 43.00 a Branch 5 links wide Co. N. E.

Land and timber  
 similar to the 2<sup>nd</sup> East

Higher land, Sugar, Beech  
 Walnut Ash, Poplar, Spruce

Land the same  
 Sugar, Walnut

60.93 a Beech 30 in. Diameter  
 65.00 a branch 5 links wide Co. N. E.  
 79.25 a Creek 150. " " " South.  
 80.00 Set Post Cor. of Sec. 35 & 36 in the Creek.  
 a Spicamore 10 in. do. do. S. 44° W. 11 links  
 an Ash 9 in. " " N. 75° E. 15. "

East On South side of Section 36.  
 40.00 qtr. Section corner  
 a Hackberry 18 in. do. do. S. 39° W. 18 links  
 a Buckeye 11 in. " " N. 1° W. 19. "  
 54.89 a Beech 15 in. Diameter  
 80.00 Intersected Range line Cor. of Towns 13 & 14 North,  
 Range 1 & 2 East  
 a Hackberry 11 in. do. do. N. 61° W. 30 links  
 a Buckeye 11 in. " " S. 48° E. 22. "

Bottom Land, first rate, Walnut  
 Sugar, Hackberry, Locust,  
 Undergrowth Spice & Paw paw etc

Surveyed by John M. Donald

Same as before  
 Sugar, Beech, Ash, Walnut, etc

Chains  
links 4

Subdivision

North Between sections 35 & 36.  
 17.80 a Sugar 12 in. Diameter.  
 40.00 qtr. section corner.  
 a Beech 20 in. Dr. bears S. 33.° W. 36. L.  
 a Do. 30 in. " N. 57.° E. 25. L.  
 55.60 a Poplar 50 in. Diameter  
 80.00 Set Post Cor. of Secs. 25, 26, 35 & 36.  
 a Sugar 12 in. Dr. bears S. 84.° W. 22. L.  
 a Do. 12 in. " N. 86.° E. 19. L.

East On Random between Secs. 25 & 36.  
 40.00 Temp. qtr. section Post.  
 79.00 a Hickory 80 links wide Cor. W.  
 80.04 Intersected N. S. line 115 links South of Post

West Corrected between Secs. 25 & 36.  
 40.02 qtr. section corner.  
 a Lym 18 in. Dr. bears N. 52.° E. 4. L.  
 a Beech 10 in. " S. 5.° E. 11. L.  
 80.04 To Section corner.

North Between Secs. 25 & 26.  
 27.10 a Beech 12 in. Diameter  
 40.00 qtr. section corner  
 a Beech 16 in. Dr. bears S. 33.° W. 36. L.

Land rich & rolling  
Beech, Sugar, Walnut, & poplar  
W. dry & sp. & Pamp. & ...

Land Rollings Rich  
Beech, Sugar and Walnut

Chains  
links  
a Beech 18 in. Dr. bears N. 44.° E. 30. L.  
 53.65 a Sugar 14 in. Diameter  
 80.00 Set Post corner to Secs. 23, 24, 25 & 26.  
 a Blue Ash 36 in. Dr. bears S. 28.° E. 25. L.  
 a Beech 20 in. " " S. 68.° W. 25. L.

East On Random between Secs. 24 & 25.  
 40.00 Temp. qtr. section Post.  
 79.92 Intersected N. S. line 150 links S. of Post

West Corrected between the same  
 39.86 qtr. section corner.  
 a Sugar 16 in. Dr. bears S. 36.° E. 25. L.  
 a Beech 20 in. " " N. 20.° W. 19. L.  
 79.92 Section corner.

North Between Secs. 23 & 24.  
 22.35 a Beech 20 in. Diameter  
 40.00 qtr. section corner  
 a Cherry 18 in. Dr. bears S. 68.° W. 34. L.  
 a Bl. Walnut 12 in. " N. 88.° E. 25. L.  
 52.67 a Beech 15 in. Diameter  
 80.00 Set Post Cor. to Secs. 13, 14, 23 & 24.  
 a W. Oak 30 in. Dr. bears N. 88.° W. 46. L.  
 a Bl. Walnut 24 in. " N. 48.° E. 25. L.

Land level & Rich. Beech Land rolling  
rich Beech Sugar  
Poplar, oak, white  
oak & ash Walnut  
W. dry & sp. & ...

Land and timber the  
same, with part rolling

Chains  
links  
East On Random between Secs. 13 & 24.  
 40.00 Temp. qtr. section Post.  
 79.98 Intersected N. S. line 234 links S. of Post

West Corrected same line  
 39.99 qtr. section corner.  
 a Beech 24 in. Dr. bears N. 44.° E. 30. L.  
 a Do. 12 in. " " S. 11.° W. 23. L.  
 79.98 To section corner

North Between Secs. 13 & 14  
 22.22 a Sugar 10 in. Diameter  
 40.00 qtr. section Post & corner.  
 a W. Ash 24 in. Dr. bears S. 64.° E. 5. L.  
 a Sugar 9 in. " " S. 73.° W. 13. L.  
 54.65 a Hickory 24 in. Diameter  
 55.42 a Brook 4 links wide Co. S. W.  
 80.00 Set Post corner to Secs. 11, 12, 13 & 14.  
 a Blue Ash 36 in. Dr. bears N. 48.° E. 17. L.  
 a Walnut 12 in. " " S. 17.° W. 56. L.

East Between sections 12 & 13 on Random.  
 40.00 Set temp. qtr. section Post.  
 79.84 Intersected N. S. line 290 links S. of Post

Land level & rich  
Beech, ash, sugar & ...

Land part rolling & part level  
Rich, timber as before

Chains  
links  
West Corrected same line  
 39.92 qtr. section Post.  
 a W. Ash 9 in. Dr. bears N. 70.° E. 17. L.  
 a Beech 16 in. " " South. 40. L.  
 79.84 To section corner

North Between sections 11 & 12.  
 8.00 a Brook 20 links wide Co. S. W.  
 22.70 a Walnut 24 in. Diameter.  
 40.00 qtr. section corner Post  
 a W. Ash 12 in. Dr. bears S. 48.° W. 40. L.  
 a W. Elm 24 in. " " N. 60.° E. 61. L.  
 57.40 Set Post Cor. to Secs. 1, 2, 11 & 12.  
 a Beech 10 in. Dr. bears S. 25.° E. 18. L.  
 a Sugar 18 in. " " S. 12.° W. 22. L.

East On Random between Secs. 1 & 12.  
 29.00 a Brook 20 links wide Co. S. W.  
 40.00 Temp. qtr. section Post.  
 79.74 Intersected N. S. line 345 links South of Post

West Corrected between Secs. 1 & 12.  
 39.87 Set qtr. section Post.  
 a Beech 10 in. Dr. bears S. 57.° E. 15. L.  
 a Sugar 24 in. " " N. 41.° E. 23. L.  
 79.74 To section corner

Land level & rolling  
same as before

Chains Links 6

North Between Sections 1 & 2.  
13.50 an Elm 24 in. Diameter  
40.00 gr. Section corner Post  
40.00 a W. Ash 10 in. Dr. bears S. 5° W. 4. S.  
a W. Walnut 12 in. " " N. 55° E. 20 S.  
57.20 a Beech 20 in. Diameter.  
83.65 Intersected the North Boundary 12 links E. of Post  
a W. Oak 36 in. Dr. bears E. 12° W. 19 Links  
a Buckeye 18 in. " " N. 45° W. 21 "

North Between Secs 3 & 35.  
40.00 a Blue Ash 18 in. Diameter  
40.00 gr. Section corner Post  
a Hophornbeam 12 in. Dr. bears S. 6° W. 20 S.  
a Buckeye 8 in. " " S. 83° E. 11 S.  
56.67 a Beech 16 in. Diameter  
50.00 Set Post from Secs 26, 27, 34 & 35.  
40.00 a Buckeye 12 in. Dr. bears E. 64° E. 9 S.  
a Do. 14 in. " " N. 75° W. 16 S. Jan'y 23<sup>rd</sup> 1820

East Between Sections 26 & 35 on Random  
26.50 a Brook 30 links wide Co. S. E.  
40.00 Temp. 2<sup>nd</sup> Section Post  
52.60 a Stream 100 links wide Co. S. E.  
40.00 Intersected N. S. line at Post.  
Land first 50 chains rich Bottom.

Chains Links West

Corrected between Secs 26 & 35.  
40.22 gr. Section corner.  
a Hackberry 16 in. Dr. bears N. 3° W. 30 S.  
a Walnut 18 in. " " S. 44° E. 17 S.  
80.45 To Section corner.

North Between Sections 26 & 27  
12.65 a Sugar 12 in. Diameter  
28.00 a Brook 30 links wide Co. S. E.  
40.00 gr. Section corner.  
a B. Ash 10 in. Dr. bears S. 5° W. 22 S.  
a W. Elm 24 in. " " N. 64° W. 31 S.  
58.00 a Beech 11 in. Diameter  
80.00 Set Post from Secs 22, 23, 26 & 27.  
a Beech 12 in. Dr. bears N. 47° W. 2 S.  
a W. Oak 30 in. " " N. 64° E. 22 S.

East On Random between Secs 23 & 26.  
28.00 a Stream 100 links wide Co. S. E.  
40.00 Set temp. gr. Section Post  
80.50 Intersected N. S. line 12 links N. of Post

West Corrected between Secs 23 & 26.  
40.25 gr. Section corner  
a Hackberry 12 in. Dr. bears N. 46° West. 37 S.  
a Buckeye 14 in. " " S. 38° E. 28 S. Link  
80.50 To Section corner.

Land rolling rich  
Beech, Sugar, Walnut  
Beech, Sugar, Walnut  
Land first 50 chains rich Bottom  
Rich; Beech, Sugar, Walnut  
Hackberry, Buckeye, Spruce  
Pine, Poplar

Land level rich Bottom  
Walnut, Oak, Ash, Poplar,  
Sugar, Hackberry, Spruce, Poplar,  
Land first half  
Shore; last half rolling  
Timber as before

Chains Links North

Between Sections 22 & 23.  
22.50 a Brook 30 links wide Co. S. E.  
28.23 a Hackberry 6 in. Diameter  
40.00 Set gr. Section Post.  
a Buckeye 12 in. Dr. bears N. 33° W. 12 S.  
a Hackberry 30 in. " " S. 8° E. 20 S.  
51.24 a W. Elm 30 in. Diameter.  
80.00 Set Post from Secs 14, 15, 22 & 23.  
a Horny Locust 24 in. Dr. bears S. 19° W. 3 Links  
a Buckeye 8 in. " " N. 35° E. 11 "

East On Random between Secs 14 & 23.  
39.20 a Brook 60 links wide Co. S. E.  
40.00 Temp. gr. Section Post  
80.50 Intersected N. S. line 14 links N. of Post.

West Corrected same line  
40.25 Set gr. Section corner.  
a Hickory 6 in. Dr. bears N. 5° W. 34 Links  
a Sugar 18 in. " " S. 43° W. 15 "  
80.50 To Section corner Jan'y 24<sup>th</sup> 1820.

North Between Sections 14 & 15.  
22.44 a Beech 30 in. Diameter  
40.00 gr. Section corner  
a Beech 16 in. Dr. bears N. 11° E. 34 Links

Land 1<sup>st</sup> half  
Bottom, last 1/2, level & post  
rolling; 2<sup>nd</sup> Bottom, all rich Bottom  
Walnut, Oak, Beech, Sugar, Spruce

Chains Links East

On Random between Secs 11 & 14.  
50.00 a W. Oak 20 in. Diameter  
80.00 Set Post from Secs 10, 11, 14 & 15.  
a Beech 14 in. Dr. bears S. 46° W. 30 S.  
a Do. 18 in. " " S. 33° E. 31 S.

East On Random between Secs 11 & 14.  
40.00 Temp. gr. Section Post.  
55.00 a Brook 50 links wide Co. S. E.  
75.00 a Brook 20 " " S. W.  
80.46 Intersected N. S. line 12 links N. of Post.

West Correction between Sections 11 & 14.  
40.23 gr. Section corner.  
a Buckeye 14 in. Dr. bears N. 4° W. 28 Links  
a Buckeye 36 in. " " S. 21° W. 59 "  
80.46 To Section corner

North Between Secs 10 & 11.  
20.16 a W. Oak 16 in. Diameter  
40.00 gr. Section corner  
a Sugar 10 in. Dr. bears N. 31° W. 3 Links  
a W. Oak 12 in. " " S. 31° W. 9 "  
56.69 a Beech 12 in. Diameter  
80.00 Set Post from Secs 2, 3, 10 & 11.  
a Buckeye 12 in. Dr. bears S. 36° E. 19 S.  
a Do. 12 in. " " S. 75° W. 18 S.

Land 1<sup>st</sup> half  
Bottom, last 1/2, level & post  
rolling; 2<sup>nd</sup> Bottom, all rich Bottom  
Walnut, Oak, Beech, Sugar, Spruce

Land first 50 chains rich Bottom  
Rich; Beech, Sugar, Walnut  
Hackberry, Buckeye, Spruce  
Pine, Poplar  
Land first 50 chains rich Bottom  
Rich; Beech, Sugar, Walnut  
Hackberry, Buckeye, Spruce  
Pine, Poplar  
Land first 50 chains rich Bottom  
Rich; Beech, Sugar, Walnut  
Hackberry, Buckeye, Spruce  
Pine, Poplar

Chains Links 7

On Random between Secs 2 & 11.  
 32.00 a Brook 50 links wide Co. S. E.  
 40.00 Temp. qtr. Section Post  
 80.44 Intersected N. S. line 1/4 link N. of Post

West  
 Corrected between Secs 2 & 11.  
 40.22 qtr. Section corner  
 a B. Walnut 18 in. dr. bears N. 25° E. 17. S.  
 a Hackberry 18 in. " " S. 6° W. 6. S.  
 80.44 To Section corner

North  
 Between Sections 2 & 3.  
 17.80 a Sugar 18 in. Diameter  
 40.00 qtr. Section Post  
 a Sugar 18 in. dr. bears N. 61° E. 5 links  
 a Beech 12 in. " " S. 61° W. 25. "  
 56.30 a Beech 18 in. Diameter  
 1.54 Intersected N. Boundary 23. S. W. of Post.  
 a Sugar 14 in. dr. bears S. 55° W. 16 links  
 a B. Ash 30 in. " " N. 69° E. 5. "

North  
 Between Secs 33 & 34  
 1.10 a Beech 12 in. Diameter  
 40.00 qtr. Section corner  
 a W. Elm 24 in. dr. bears N. 82° E. 3. S.  
 a Sugar 12 in. " " N. 53° W. 26. S.

58.50 a Beech 12 in. Diameter  
 80.00 Set Post for to Secs 27, 28, 33 & 34.  
 a Beech 30 in. dr. bears S. 55° W. 20. S.  
 a Do. 36 in. " " N. 33° E. 14. S.

East  
 Between Sections 27 & 34.  
 40.00 Temp. qtr. Section Post  
 80.48 Intersected N. S. line 1/4 link S. of Post

West  
 Correction between same  
 40.24 qtr. Section corner  
 a B. Ash 36 in. dr. bears N. 59° E. 7. S.  
 a Buckeye 12 in. " " S. 30° W. 27. "  
 80.48 To Section corner

North  
 Between Secs 27 & 28.  
 33.77 a Beech 1 in. Diameter  
 40.00 qtr. Section corner  
 a Beech 24 in. dr. bears S. 83° W. 16. S.  
 a W. Oak 24 in. " " N. 83° E. 17. S.  
 60.24 a B. Walnut 18 in. Diameter  
 61.00 a Brook 30 links wide Co. S. E.  
 80.00 Set Post for to Secs 21, 22, 27 & 28.  
 a Logwood 10 in. dr. bears S. 61° W. 15. S.  
 a Beech 24 in. " " N. 50° E. 15. S.

Sand 1/2 mile level to good. Sand valley  
 2 1/2 p. rich soil in q. Walnut & Sugar  
 Sugar & Elm in Sugar. Oak in Sugar & Elm  
 poplar  
 Sand part valley part level  
 very rich Beech Sugar Walnut  
 Elm Sugar Walnut in sugar

Sand level  
 Walnut Sugar  
 Walnut Sugar  
 Sand part level  
 part rolling Rich Beech  
 Sugar Walnut  
 Sand level very rich  
 Beech Sugar White & Blue ash  
 W. B. Walnut land off Sugar  
 Sand rolling  
 very Rich

East  
 Between Sections 22 & 27 on Random  
 40.00 Temp. qtr. section Post  
 80.49 Intersected N. S. line 43 link S. of Post.

West  
 Correction between same  
 40.24 qtr. Section corner  
 a Beech 16 in. dr. bears S. 33° E. 22 link  
 a W. Ash 18 in. " " N. 21° W. 25. "  
 80.49 To Section corner

North  
 Between Sections 21 & 22  
 11.22 a Beech 12 in. Diameter  
 40.00 qtr. Section corner  
 a Beech 12 in. dr. bears S. 52° W. 10. Links  
 a Do. 30 in. " " N. 43° E. 25. "  
 56.90 a W. Elm 15 in. Diameter  
 80.00 Set Post for to sections 15, 16, 21 & 22.  
 a W. Elm 18 in. dr. bears N. 68° W. 30 links  
 a Do. 30 in. " " S. 73° E. 40. "

East  
 On Random between Secs 15 & 22.  
 30.60 a Brook 10 links wide Co. S. E.  
 40.00 Temp. qtr. Section Post  
 80.44 Intersected N. S. line 38 links S. of Post.

West  
 Corrected between same  
 40.22 qtr. Section corner  
 a Blue ash 16 in. dr. bears N. 23° E. 27 links  
 a Mulberry 18 in. " " S. 22° W. 26. "  
 80.44 To Section corner Jan. 26<sup>th</sup> 1820 (line)

North  
 Between Sections 15 & 16.  
 994 a Cherry 18 in. Diameter  
 32.00 a Brook 40 links wide Co. S. E.  
 40.00 qtr. Section corner  
 a Hickory 10 in. dr. bears N. 41° W. 9. S.  
 a Buckeye 14 in. " " S. 59° W. 18. S.  
 55.06 a Beech 18 in. Diameter  
 80.00 Set Post for to Secs 9, 10, 15 & 16.  
 a W. Oak 18 in. dr. bears N. 49° W. 20. S.  
 a Do. 18 in. " " N. 76° E. 35. S.

East  
 On Random between Secs 10 & 15.  
 40.00 Temp. qtr. Section Post  
 80.48 Intersected N. S. line 140 links S. of Post.

West  
 Correction between same  
 40.24 qtr. Section corner  
 a Beech 20 in. dr. bears S. 17° E. 17 links  
 a Do. 14 in. " " N. 13° W. 20. "  
 80.48 To Section corner

Sand level Rich Beech  
 Sugar Ash Walnut  
 Sand level very rich  
 Beech Sugar White & Blue ash  
 W. B. Walnut land off Sugar  
 Sand rolling  
 very Rich

Sand part rolling part level  
 very rich Beech W. B. Walnut W. B.  
 Beech Sugar Walnut in sugar

North Between sections 9 & 11  
 22.11 a Beech 30 in. Diameter  
 40.00 qtr. Section corner  
 a Beech 18 in. Dr. for new line  
 a Sugar 10 in. Dr. bears N. 2° W. 18 links  
 87.90 a Beech 12 in. Diameter  
 30.00 Set Post for to Sect. 3, 4, 9 & 10.  
 a Beech 18 in. Dr. bears S. 79° W. 22 links  
 a Do. 12 in. " " S. 66° E. 30. "

East On Random between Sect. 3 & 10.  
 40.00 Temp. qtr. Section Post.  
 30.42 Intersected N. & S. line 8 links S. of Post.

West Corrected between Sect. 3 & 10.  
 40.21 qtr. Section Post.  
 a Blk. Ash 18 in. Dr. bears S. 26° W. 26 links  
 a W. Oak 30 in. " " N. 10° E. 27. "

North Between Sect. 3 & 4  
 22.82 a W. Oak 18 in. Diameter  
 40.50 qtr. Section corner  
 a W. Elm — bears S. 14° E. 27.5  
 a W. Ash 30 in. Dr. " N. 21° E. qtr.

Forest level 22 rate  
 Beech, Oak, Ash, Sugar,  
 Hickory, Umbrage, Spruce  
 Sand & Timber the same  
 Sand rolling 24 rate  
 Beech, Oak, Sugar, Spruce  
 Sand & Timber the same  
 Sand rolling 24 rate  
 Beech, Sugar, Oak,  
 Umbrage, Spruce  
 Sand level 24 rate  
 Beech, Sugar, Oak,  
 Umbrage, Spruce  
 Sand level 24 rate  
 Beech, Sugar, Oak, Spruce  
 Sand level 24 rate  
 Beech, Sugar, Oak, Spruce

Chains  
links  
 81.35 Intersected North boundary 34 links East of Post  
 a poplar 36 in. Dr. bears S. 61° W. 50 links (June)  
 a W. Oak 36 in. " " N. 33° E. 64 } January, 27<sup>th</sup> 1820

North Between sections 32 & 33.  
 16.06 a Beech 24 in. Diameter  
 17.50 a Spring Branch Co. N. W.  
 40.00 qtr. Section corner  
 a W. Ash 36 in. Dr. bears S. 85° E. 22.5  
 a Sugar 18 in. " " S. 54° W. 35.5

East On Random between Sect. 28 & 33.  
 38.00 a Spring Branch Co. North.  
 40.00 Set Temp. qtr. Section Post.  
 81.11 Intersected N. & S. line 5 links S. of Post.

West Corrected between same.  
 40.55 qtr. Section corner  
 a Beech 24 in. Dr. bears N. 89° W. 8.5  
 a Do. 24 in. " " N. 82° E. 47.5  
 81.11 To Section corner

Sand rolling 24 rate  
 and Timber the same  
 Sand rolling 24 rate  
 Beech, Sugar, Oak, Poplar  
 Sand rolling 24 rate  
 Beech, Sugar, Oak, Poplar

Chains  
links  
 North Between sections 28 & 29.  
 20.00 a Blue Ash 12 in. Diameter  
 40.00 qtr. Section corner  
 a Sugar 30 in. Dr. bears S. 42° E. 10 links  
 a Do. 28 in. " " S. 88° W. 19. "

East Between sections 21 & 28 On Random.  
 40.00 Temp. qtr. Section Post  
 81.04 Intersected N. & S. line 60 links S. of Post.

West Corrected between same  
 40.52 qtr. Section corner Post  
 a Lynn 20 in. Dr. bears S. 5° W. 10 links  
 a Buckeye 14 in. " " N. 32° W. 41. "

North Between sections 20 & 21  
 28.91 a Beech 16 in. Diameter  
 40.00 qtr. Section corner  
 a Beech 30 in. Dr. bears N. 13° E. 5 links  
 a Do. 10 in. " " S. 66° W. 27. "

50.20 a W. Ash 36 in. Diameter

Sand, post rolling 24 rate  
 Beech, Sugar, Oak,  
 Umbrage, Spruce  
 Sand & Timber the same  
 Sand rolling 24 rate  
 Beech, Sugar, Oak,  
 Umbrage, Spruce  
 Sand level 24 rate  
 Beech, Sugar, Oak,  
 Umbrage, Spruce

Chains  
links  
 80.00 Set Post for to Sect. 16, 17, 20 & 21  
 a Beech 12 in. Dr. bears S. 9° E. 9 links  
 a Do. 14 in. " " N. 35° W. 36. "

East On Random between Sect. 16 & 21.  
 40.00 Temp. qtr. Section Post  
 81.08 Intersected N. & S. line 56 links S. of Post.

West Section between same  
 40.54 qtr. Section corner  
 a W. Ash 12 in. Dr. bears S. 45° E. 23 links  
 a Do. 12 in. " " N. 41° W. 14. "

81.08 To Section corner  
 Jan'y 28<sup>th</sup> 1820. (June)

North Between sections 16 & 17.  
 14.33 a W. Oak 30 in. Diameter  
 40.00 qtr. Section corner  
 a Beech 20 in. Dr. bears N. 34° W. 10 links  
 a Do. 20 in. " " N. 58° E. 22. "

62.00 a Beech 18 in. Diameter  
 80.00 Set Post for to sections 8, 9, 16 & 17.  
 a Sugar 12 in. Dr. bears N. 10° E. 24.5  
 a Beech 14 in. " " N. 58° W. 30 links

Sand level 24 rate  
 Beech, Sugar, Oak, Spruce  
 Sand level 24 rate  
 Beech, Sugar, Oak, Spruce  
 Sand level 24 rate  
 Beech, Sugar, Oak, Spruce  
 Sand level 24 rate  
 Beech, Sugar, Oak, Spruce

12

East On Random between Sec. 9 & 16.  
 39.50 a Brook 10 links wide Co. S. E.  
 40.00 Top of Section Post  
 41.00 a Brook 40 links wide Co. N. E.  
 42.00 a Brook Co. S. E. thence with the same in 1/4 mile.  
 81.14 Intersected N. S. line 5 links S. of Post.

West  
 40.57 Section between same  
 qtr. Section corner  
 a Beech 8 in. Dr. bears N. 71° W. 19 links  
 a W. Oak 3 in. " " S. 19° E. 21. "

81.14 To Section corner

North  
 Between Sections 8 & 9.  
 24.00 a Brook 40 links wide Co. S. E.  
 26.00 a W. Walnut 12 in. Diameter  
 40.00 qtr. Section corner  
 a Beech 15 in. Dr. bears N. 73° W. 15 links  
 a Do. 10 in. " " N. 69° E. 15. "

53.81 a Poplar 40 in. Diameter  
 80.00 Let Post for next Sec. 4, 5, & 9.  
 a Poplar 12 in. Dr. bears N. 15° W. 2  
 a Do. 12 in. " " S. 2° E. 27.

Chains Links

East  
 On Random between Sec. 4 & 9.  
 40.00 Temp. qtr. Section Post  
 81.10 Intersected N. S. line 5 links S. of Post.

West  
 Corrected between same  
 40.55 qtr. Section corner  
 a Beech 16 in. Dr. bears S. 71° W. 11 links  
 a Do. 18 in. " " N. 61° E. 33. "

81.10 To Section corner

North  
 Between Sections 4 & 5.  
 14.33 a Beech 12 in. Diameter  
 40.00 qtr. Section corner  
 a Sugar 14 in. Dr. bears S. 73° W. 6 links  
 a Beech 12 in. " " S. 55° E. 21. "

80.76 Intersected North Boundary 3 1/2 links E. of Post.  
 a Beech 18 in. Dr. bears S. 58° W. 38 links  
 a Do. 16 in. " " S. 31° E. 9. "

North  
 Between Sec. 31 & 32.  
 21.24 a Hackberry 12 in. Diameter  
 40.00 qtr. Section corner  
 a Beech 10 in. Dr. bears N. 67° W. 10 links.  
 a Do. 18 in. " " N. 23° E. 16. "

57.81 a Beech 18 in. Diameter.  
 65.00 a Brook 8 links wide Co. East.

Land rolling and broken 2 1/2 miles  
 Beech, Sugar, Oak and Poplar  
 Land first 1/4 up and 1/2 part  
 rich Bottom, Beech, Sugar, & Ash  
 Oak, Walnut, Sugar, Hackberry, & Spruce

Land mostly level 3/4 mile, Beech  
 Sugar, Oak, Hickory, Spruce & Pine  
 level 2 1/4 miles  
 Sugar, Oak, Hickory, Spruce & Pine  
 Land part rolling & part  
 level rich. Oak & the  
 same with Walnut

13

Chains Links

80.00 Let Post for next Sec. 29, 30, 31 & 32.  
 a Beech 8 in. Dr. bears N. 74° W. 25 links.  
 a Do. 12 in. " " N. 52° E. 11. "

East  
 On Random between Sec. 29 & 32.  
 40.00 Temp. qtr. Section Post  
 80.81 Intersected N. S. line 5 links South of Post.

West  
 Corrected between Sec. 29 & 32.  
 110.40 qtr. Section corner  
 a Beech 12 in. Dr. bears S. 34° W. 28 links.  
 a W. Oak 30 in. " " N. 84° E. 11. "

80.81 To Section corner

West  
 Between Sections 30 & 31  
 8.00 a Brook 20 links wide Co. N. E.  
 21.83 a W. Ash 16 in. Diameter  
 40.00 qtr. Section corner  
 a Beech 14 in. Dr. bears S. 43° W. 26 links  
 a Do. 20 in. " " N. 81° W. 57. "

41.52 Intersected West Boundary 9 1/2 links N. of Post.  
 a Beech 18 in. Dr. bears S. 2° W. 11 links  
 a Do. 20 in. " " N. 19° E. 21. "

Land rolling & rich  
 Timber as before  
 Land rolling & rich  
 Oak, Beech, Sugar  
 mostly Spruce & Pine

13

Chains Links

North  
 Between Sec. 29 & 31.  
 5.00 a Brook 20 links wide Co. N. E.  
 18.20 a W. Oak 2 1/2 in. Diameter  
 110.00 qtr. Section corner  
 a Beech 10 in. Dr. bears N. 42° W. 5 links  
 a W. Oak 15 in. " " S. 50° E. 21. "

60.75 a Beech 2 1/2 in. Diameter  
 80.00 Let Post for next Sec. 17, 20, 29 & 30.  
 a W. Oak 30 in. Dr. bears S. 70° W. 19 links  
 a Beech 12 in. " " S. 33° E. 13. "

East  
 On Random between Sec. 20 & 29  
 40.00 Temp. qtr. Section Post.  
 49.00 a Brook 20 links wide Co. S. E.  
 80.71 Intersected N. S. line 50 links South of Post.

West  
 Corrected between same 20 & 29.  
 110.35 qtr. Section corner  
 a Beech 30 in. Dr. bears S. 43° E. 4 links  
 a Do. 18 in. " " N. 44° E. 24. "

80.71 To Section corner

West  
 Between Sections 19 & 31.  
 13.60 a Beech 18 in. Diameter  
 40.00 qtr. Section corner  
 a Beech 14 in. Dr. bears N. 41° W. 21.5.  
 a Do. 14 in. " " S. 20° E. 21.5 links

Land rolling & rich  
 Timber as before  
 Land mostly level rich  
 Timber as before



14

East 39.5 41.81 Intersected West Boundary 152 links North of Post East

40.00 a Beech 12 in. Dr. bears S. 29° E. 36 links

41.00 an Ironwood 11 in. " N. 38° E. 31. "

42.00

West Between Sections 19 & 20.

51.14 15.00 a Beech 12 in. Diameter

26.00 a Brook 10 links wide Co. East.

West 40.00 qtr. Section corner

40.5 a Beech 12 in. Dr. bears N. 82° West

a Do. 12 in. " " S. 82° E. 17 links

61.14 a Beech 16 in. Diameter.

51.14 0.00 Get Post for into Secs 17, 18, 19 & 20.

a Beech 24 in. Dr. bears S. 59° W. 9 links

a W. Ash 6 in. " " S. 6° E. 21. "

24.00

West Between Secs 18 & 19.

26.00 20.18 a Beech 18 in. Diameter

40.00 qtr. Section corner

a Beech 30 in. Dr. bears S. 36° W. 22 links

a Sugar 18 in. " " N. 12° E. 13. "

53.51

30.00 22.02 Intersected West Boundary 230 links N. of Post.

a Sugar 14 in. Dr. bears S. 23° E. 25 links

a Do. 16 in. " " N. 20° E. 31. "

Chains & Links

Between Sections 17 & 20 On Random

25.00 a Brook 8 links wide Co. S. E.

40.00 Tmpy. qtr. Section Post

50.69 Intersected N. & S. line - South of Post

West Corrected the same

40.34 1/2 qtr. Section corner

a Beech 8 in. Dr. bears S. 58° E. 10 links

a Do. 10 in. " " N. 56° W. 21. "

30.69 To Section corner - Jan'y 30<sup>th</sup> 1820 (June)

North Between Sections 17 & 18.

25.34 an Elm 12 in. Diameter

40.00 qtr. Section corner

a W. Ash 12 in. Dr. bears S. 33° W. 7 links

a Beech 10 in. " " N. 51° W. 21. "

62.76 a Sugar 24 in Diameter

80.00 Get Post for into Secs 7, 8, 17 & 18

a Beech 18 in. Dr. bears S. 12° E. 10 links

a W. Ash 14 in. " " N. 5° E. 3. "

East Between Secs 8 & 17 on Random

40.00 Tmpy. qtr. Section Post

80.74 Intersected N. & S. line 39 links S. of Post

Sand level and Rich Timber as before

Sand level and Rich Timber as before

Sand level and Rich Timber as before

Sand level and Rich Timber as before

Sand level and Rich Timber as before

Sand level and Rich Timber as before

Sand and Timber as before

Sand level Rich Timber as before

Sand level Rich Timber as before

West 40.37 corrected between Secs 8 & 17.

qtr. Section corner

a Red Oak 48 in. Dr. bears S. 40° W. 7 links

a Beech 12 in. " " S. 80° E. 13. "

80.74 To Section corner.

West Between Sections 7 & 18.

18.21 a Beech 12 in. Diameter

40.00 qtr. Section corner

a B. Walnut 4 in. Dr. bears N. 77° E. -

a Beech 24 in. " " West 25 links

41.86 Intersected West Boundary 288 links N. of Post.

a Beech 14 in. Dr. bears S. 11° E. 20 links

a Do. 14 in. " " S. 58° W. 12. "

North Between Sections 7 & 8.

19.21 a Beech 18 in. Diameter

40.00 qtr. Section corner from which

a W. Oak 36 in. Dr. bears S. 17° E. 34 links

a Do. 14 in. " " S. 37° W. 34. "

62.00 a Beech 24 in. Diameter

80.00 Get Post for into Secs 5, 6, 7 & 8.

a Beech 28 in. Dr. bears S. 55° E. 9 links

a Do. 12 in. " " N. 56° W. 10. "

Sand and Timber as before

Sand and Timber as before

Sand and Timber as before

Chains & Links

East Between Sections 5 & 8 On Random

40.00 Get tmpy. qtr. Section Post.

40.24 a Brook 40 links wide Co. S. E.

80.75 Intersected N. & S. line 47 links S. of Post.

West Corrected between Sections 5 & 8.

40.37 1/2 qtr. Section corner in the channel of

a Brook 4 links wide Co. West

a Walnut 10 in. Dr. bears N. 10° E. 7 1/2 links

an Elm 10 in. " " N. 85° W. 43. "

80.75 To Section corner

West Between Sections 6 & 7.

21.58 a W. Oak 30 in. Diameter

40.00 qtr. Section corner

a Sugar 20 in. Dr. bears S. 16° W. 21 links

a Do. 12 in. " " N. 35° E. 24. "

42.30 Intersected West Boundary 336 links West of Post

a Sugar 12 in. Dr. bears N. 60° W. 20 links

a Do. 14 in. " " S. 16° E. 34. "

North Between Sections 5 & 6.

30.00 a Sugar 24 in. Diameter

40.00 qtr. Section corner

a Sugar 12 in. Dr. N. 50° W. 26 links

a Do. 12 in. " " N. 86° E. 25. "

Sand part level part rolling and Rich Walnut Sugar Beech Spruce & Birch

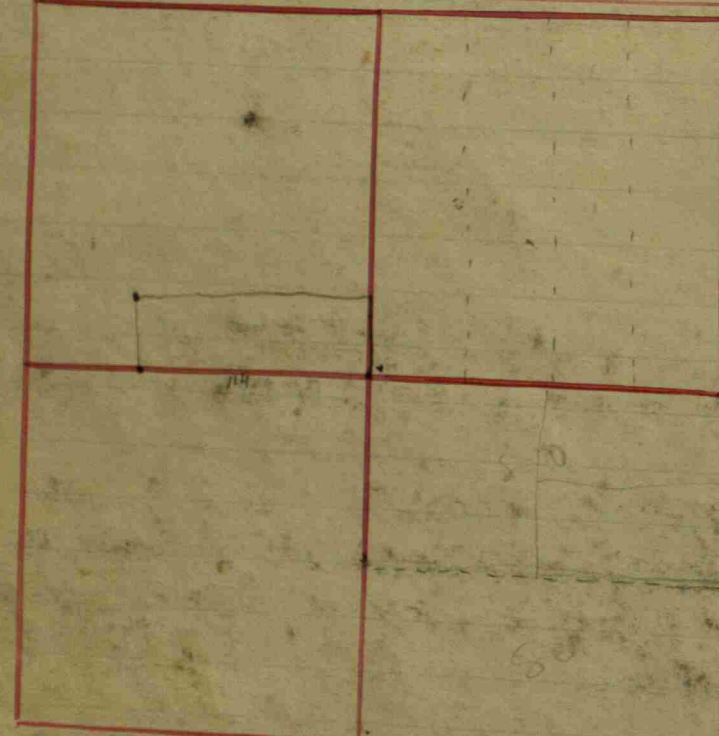
Sand & Timber as before

6.00 a Beech 30 in Diameter  
 2.07 intersect North Boundary 5 links  
 East of Post -  
 W. Oak 28 in. in bears S. 69° W. 18 links  
 a do. 30 in. " " N. 84. E. 19 links  
 Sand level & Rich's Timber Books  
 Sugar Co. July 1<sup>st</sup> 1820.

Stephen Collett Dep. Surveyor.

The page contains two distinct red ink sketches. The upper sketch is a horizontal, wavy line with several peaks and valleys, resembling a profile or a boundary line. The lower sketch is a large, complex scribble consisting of multiple overlapping, curved lines that form a roughly rectangular shape with irregular edges.

Section 1 N. North, Range 1 East. Owners names, Witnesses, Dr. Bearings, Links.



Witnesses	Dr. Bearings	Links
a Beech 28	S. 41° W	31
a Ditto 28	N. 26 1/2° E	2
a Beech 22	N. 21° E	7 1/2
a Sugar 20	S. 65° E	39
a Sugar 18	S. 76 1/2° W	37 1/2
a Beech 26	N. 31 1/2° W	92 1/2
a Beech 26	N. 51° W	8
a Hornbeam 8	S. 12° W	26
an Ash 12	S. 84° W	78
a Plum tree 9	N. 55 1/2° W	64

Center of Sec. 1  
 Thence North 5 3/4 R  
 Thence N. 55 1/2 Rods  
 53 Rods S of N.E. cor.  
 of the Section  
 Thence South  
 53 Rods  
 The House & Dooryard  
 60 Rods West with  
 Thence N. at right angle  
 Thence West 10 Rods  
 Thence S. 4 Rods; Thence  
 8 acres out of the  
 Beginning 63 Poles &  
 N 1/2 mile Post: Thence  
 West with the division  
 N.E. corner  
 Thence N. at 9° variation  
 where is

Owners names & Witnesses, Dr. Bearings, Links

Witnesses	Dr. Bearings	Links
Obadiah Mendenhall	Estate; a Survey for Sec. 1	
The Lower E. of the S. E. corner	West 1/2 and 7/8 of N. E. 1/4	
S. W. corner	an Ash 14	N. 2° W 12
N. W. corner	a R. Oak 10	S. 82 1/2° W 24
N. E. corner	a Beech 20	N. 96 1/4° W 4
	a Sugar 24	N. 86 1/2° E 16
	an Ash 15	N. 89 1/2° E 300
	a Yucca 2	S. 35 1/2° E 4
	a Beech 20	N. 87° W 17 1/2
	a Sugar 10	S. 50° E 28

balance at the top

Owners names & Witnesses, Dr. Bearings, Links

Mordicai Carter & wrap in land  
 Straight line cutting  
 2 for Mordicai 504 square Poles  
 West corner  
 East cor. in the field  
 Mordicai Carter 20  
 the division of the  
 S.W. cor. of lot No. 4.  
 North, where  
 Thence East with Sec.  
 East line of the 1/4 Sec.  
 = 8 at top  
 at 14 + 15 at bottom

Witnesses	Dr. Bearings	Links
a Sugar 14	S. 12 1/2° W	35
a Beech 18	N. 53 3/4° W	76
a Poplar stump 24	N. 45 3/4° E	292
a Burr Oak 28	N. 53° E	96
bearing 48 poles + 20 links to the		
about Oak 8	S. 50 3/4° E	45
a Hickory 10	N. 67 1/2° E	24 1/4
Book C. p		119

Ballard & White  
 The South 1/2 mile  
 dead witness tree &  
 plain Stone promised  
 S. E. cor. of this. Relocated  
 = 16 long  
 by measuring; at 10 + 10 =  
 East 1/2 mile Post  
 Standing: a Stone 6 + 8  
 and one foot long

Owners names & Witnesses, Dr. Bearings, Links

Centre of Section relocated  
 Rock 20 x 15 x 12  
 an Elm 20 S 75° W 120  
 S from Centre a Rock an Elm 15 N 71° W 120  
 N. E. cor of Sec 1 Relocated a Rock plot 16 x 8 x 4  
 old witness still standing on Elm N 10 E 26  
 1/2 mile a good Rock 16 x 10 x 10 old witness  
 still standing; Thence South Seventy (70) Nine (9)  
 Rods + 12 links - to a Cor Rock - 15 x 10 x 10 -  
 witness a Sugar 10 N 76° W 49 1/2  
 South from the N. E. cor of Section Seventy nine  
 rods + 12 links a Rock 16 x 11 x 10  
 a Rock 15 N on line 30 - witness  
 cutting off 67 1/2 acres  
 North from Centre of Sec. 95 Rods + 3 links,  
 a cherry tree 9 S 30 1/2° E. 57  
 Centre S of W 1/2 mile stone, 80 Rods + 3 links measurement  
 a Stone 10 x 10 x 16, Elm 24 N 84° W 16 1/2  
 centre S of centre 81 R + 2 S = a Stone S 81° W 25 L  
 an Elm N 85° W 107 1/2 =  
 could not plant Stone for cement.

3.64 <sup>7</sup>/<sub>10</sub> ch. N. of S. <sup>1</sup>/<sub>2</sub> mile of 1-14-18.

Stone 8 x <sup>1</sup>/<sub>2</sub> x 18 with stone East 18 Links

3.64 <sup>7</sup>/<sub>10</sub> ch. N. of S.E. cor. of 1-14-18.

Stone 6 x 12 x 16

B. Oak 10 S. 81 <sup>1</sup>/<sub>2</sub> E. 83 <sup>1</sup>/<sub>2</sub> Links.

Stone West 23 Links.

Thence N. 83 <sup>3</sup>/<sub>4</sub> E. 14.62 <sup>9</sup>/<sub>10</sub> ch. to the E. line of N. <sup>1</sup>/<sub>2</sub> S. <sup>1</sup>/<sub>4</sub> Sec. 6-14-28.

to a Stone 8 x 12 x 16

Elm 14 S. 18 <sup>1</sup>/<sub>2</sub> E. 4 <sup>1</sup>/<sub>2</sub> Links

B. Ash 3 S. 5 E. 3 "

Thence S. 3.64 <sup>7</sup>/<sub>10</sub> ch. to a stone which is 2 <sup>1</sup>/<sub>11</sub> ch. N. of the S.E. cor. N. <sup>1</sup>/<sub>2</sub> S. <sup>1</sup>/<sub>4</sub> - 6-14-28.

Thence S. 83 <sup>3</sup>/<sub>4</sub> N. 14.62 <sup>9</sup>/<sub>10</sub> ch. to the S.E. cor. of Sec. 1-14-18.

Thence N. 40.19 <sup>7</sup>/<sub>10</sub> ch. to S. <sup>1</sup>/<sub>2</sub> Sec. 1-14-18.

" N. 3.64 <sup>7</sup>/<sub>10</sub> ch. Thence E. 40.19 <sup>7</sup>/<sub>10</sub> ch. to Sec. line.

J. W. Trotter, S. H. Co.

Growth in Mathematics  
Tilley Astor, N. Y. N. Y.  
Harcourt Br

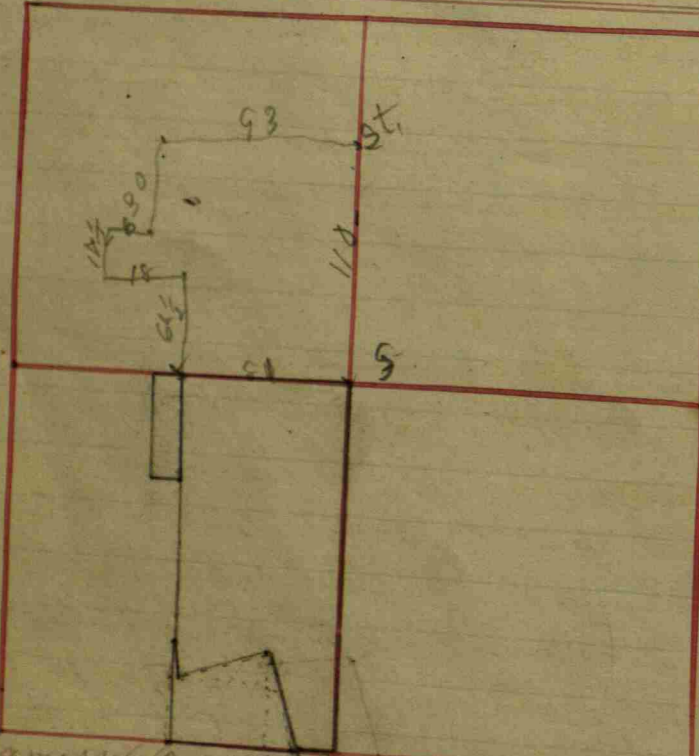


$$\begin{array}{r}
 14.62 \\
 3.64 \\
 \hline
 58.48 \\
 91.72 \\
 \hline
 4386 \\
 \hline
 53.6168
 \end{array}$$

4.2

$$\begin{array}{r}
 14.62 \\
 40.19 \\
 \hline
 54.81 \\
 3.64 \\
 \hline
 21924 \\
 32886 \\
 16443 \\
 \hline
 1995084
 \end{array}$$

Section 2 Tm North Range N1 East. Owners names & Co. Witnesses Dr. Bearings links



Thence West 30 Poles	at Sugar 18	N. 85° W	46
Thence N. 45 poles & 20 links	an Elm 24	N. 51 1/2° E	12 1/2
Thence N. 73° E	an Elm 30	S. 75° W	42
46 1/4 Poles	an Ash 8	N. 1° E	39
Thence South 27 Poles	at Sugar 12	S. 33° W	38
	at Lye corner 32	N. 37° W	55
	+ 16 1/2 links to the Beginning:		

Charles Lowder 1/2 mile Post a Rock	Others: a Survey for in Dec. 2		
Center West of Center a Rock 8+18	9+25 well set old Witnesses Standing:		
Center of N. 1/4	an Ash 6	N. 41° W	92
East 1/2 mile Relocated	at Hickory 4	N. 19° E	117
Center E. of N. 1/4	an Elm 10	S. 11 1/2° W	56
	at Hickory 8	S. 47 1/2° W	42
	at Sugar 14	S. 65° W	90
	at Hickory 8	N. 53 1/2° W	87
	an Ash 14	N. 68° E	15
	at Ditto 16	S. 21° W	16

Center of Sec. 2 a line thick well set N. 1/4 mile Beginning at the 3.25 chains to Rock 10+ Relocated	Stone Rock 10 inches long & 6 in		
Thence South 13 1/2 chains to limestone Rock 9+18	at Hickory 18	N. 40° E	64
	Center N. of S. 1/4: Thence West		
	an Elm 12	S. 44° E	51 1/2
	an Ash 5	N. 37° W	15
	at Lye corner 10	N. 37 1/2° E	51
	an Elm 10	S. 65° E	105 1/2

1/2 mile Post on South Sec. 2 Relocated	at H. Elm 12	N. 12 1/2° W	50
S. W. cor. of Section Relocated	at Ditto 5	N. 54 1/2° E	41
Center out. of S. 1/4	at Sugar 14	N. 65° W	23 1/2
50 Poles North with Sec. line (Joshua Newlin Mill lot S. E. corner	at R. oak 22	S. 84° E	18
	at Hickory 12	N. 56° W	12
	at Sugar 26	S. 15° W	98
	at Hickory 5	N. 4 1/2° W	20 3/4
	at Elm 20	N. 66° W	47
	at Ditto 14	N. 34° W	49

see next page

Thence East 3.25 chains & South through Center Beginning in White Poles W. of 1/2 mile Post	to the line dividing the S. 1/4 North		
Thence North 17° West 43 Poles & 3 links	Thence North to the Beginning		
Thence S. 83 1/2° W 46 Poles & 6 links	at Hickory on the Section line 20		
Thence N. 8 1/2° W 16 Poles	at Sugar 16	N. 8 1/2° E	120
	at Boy Elder 10	S. 31° W	87
	at Lye corner 7	S. 20° W	31 1/2
	at Ditto 8	S. 60° W	18
	at Lye corner 6	N. 40° E	160
	at Ditto 6	N. 63° E	165
	+ 3 links to the corner of the Mill lot		
	at Lye corner 30	N. 14° W	65 1/2
	Center S. of S. 1/4: Thence East to the		
	Beginning: Containing		
	This last described		
	as Deputy Surveyor by		
	interest: N. H.		

Thence N. 8 1/4 Sec. 2	Corner on a line 1 Rod East of the		
West line: N. W. corner	of James G. mont. Land 23 Rods &		
19 1/2 links North of	S. line of the 1/4 at Stone 24+18+15		
Thence E. 37 Rods Stone 16+12+5	an Apple tree 6	S. 4° W	23
Thence N. 4 R. & 19 links	at Maple 2	S. 45° W	1
at Stone 14+11+8	at B. Poplar 6	S. 67 1/2° W	20 1/2
Thence East 12 Rods	an Apple tree 5	S. 49° E	23 1/2
at Stone 17+10+7	at Ditto 4	N. 51 1/2° E	20
			at the top.

Thence South 1 Rod & 17 links at Stone 16+10+8	an Apple tree 6	S. 63 1/2° W	20 3/4
Thence East to S. line at Stone wheel	26 Rods & 19 1/2 links N. of Eye mill Post		
	at Hickory 24	N. 61 1/2° E	28
	an Elm 20	S. 15° E	59
	at B. Oak 40	N. 20° E	3
	at Mulberry 10	S. 49° E	12
	15 links to Denis' Corner Stone 16+5+6		
	to Hornaday's N. E. corner:		
	at Stone 14+10+8		
	at Sugar 24	N. 51° E	21 1/2
	at Hickory 30	S. 55° W	23 1/8
	S. line 155 Rods & 16 links. a corner		
	1 Rod East on line		
	an Elm 20	S. 30° W	155
	at Stone 18+16+10		
	at Cedar 4	S. 74° W	73
	Thin N. 30 Rods & 21 links		
	1 Rod E. of line: at Stone 16+8		
	at Gate Post 12	S. 84° W	49
	Thence a corner 46 Rods & 15 links N. of and 1 Rod E. of Center of		
	Section: for Deed		
	of Deed corner		
	at Stone 24+18+16 and		
	an Ash 12	N. 40 1/2° E	26

Book C. p 300

Section 25 1/4 North, Range 1 East, Continued

Owner's name	for	Witnesses	Dist	Bearings	Links
Mr. Stanley	his	a Survey for	140	by	Rods in
N.E. corner old	Stump to S.E. corner	still to be			
Sec. 2	20 Rods	Stanley	S.E. corner		
at Stone 11+8+6	at White Hickory	10	S. 23° E	45 1/4	
	at Sugar	10	S. 43° W	75	
Lower East line	43 3/4 Rods	Thence West	40 Rods		
Stanley S.W. corner	at Stone 12+11+10	angular			
	at B. Oak	30	N. 31° W	69	
Thence N. 63 3/4° W	37 1/2 Rods	to Section line	72 Rods		
West of the N.E. Sec. cor	at Sugar	18	S. 67 3/4° E	166 1/2	Stone 12+9+5
21 1/2 links East of the	N. 1/4 N. line of Town	80 Rods			
4 links N. 1/2 mile of	Sec. 2	at Stone 19+12+9	Set by		
Dennis' Stump	at B. Oak	36	S. 59 1/2° E	101	
West line 5 1/2 Rods					Book C. p. 304

Miller, White, Broadhead & al a survey for, Dec. 1892  
 Robt. Torrey & A. J. Brown sworn chainmen.

110 Rods N. of Cor. set by  
 of Sec. Stone 6x10x16 Stone 3x12x16 North 43 1/2 Links  
 Thence North 43 1/2 Links set by  
 to a Stone 3x12x16 Stone cor. 6x10x16 South 43 1/2 "  
 This is Miller & Broadhead's corner on the west.

Owner's name s.c. cor. witness Dist. Bearing Links

127 Rods South of Sec. Cor. a stone 3x12x20 } Stone East 22 Links  
 Buckeye } S. 82° W. 31 1/2 "

North Half Mile  
 Stone 8x10x20 Stone 8x10x12 South 100 Links  
 This stone is 5 1/2 links N. of the S. 1/2 mile of Sec 35 S. 15° E.

63 3/4 Rods South of S.E. cor. of the Sec. is a  
 Stone 8x10x16 Maple 12 ch. 70 1/2° W. 34 1/2 Links  
 Stone 8x12 West 24 "

Stone 2.00 chains East of Miller's S.W. & D. White's S.W. cor.  
 Sycamore 4 S. 28° W. 19 Links  
 " 3 S. 35° W. 29 1/2 "

Dec. 14, 1892.  
 John W. Trotter S. H. Co.

Symon's, Daugherty et al - A survey for.  
 Beginning at the cor. of Sec. 2 and running thence  
 East 8.41 ch. to a Stone 3x7x9

Maple 16 S. 63° W. 49 1/2 Links  
 Thence East 11.29 ch. to a stone 8x10x20  
 wit. Stone 5x10x12 N. 20° L.

Thence East 16.92 1/2 ch. to a stone 5x16x24  
 Balw kiln 14 N. 70° E. 74 1/2 L.  
 Stone North 18 L.

Thence East 2.94 ch. to the E 1/2 mile stone of Sec 2.  
 Thence North 6.73 ch. to a stone.

Thence West 2.94 ch. to a stone 6x6x16  
 Oak 6 ch. 32 3/4° E. 18 L.  
 Do 5 ch. 61° W. 29 L.

Thence West 16.92 1/2 ch. to a stone 5x14x14  
 Oak 6 ch. 71 1/2° W. 7 Links.

Thence West 7.33 1/3 ch. to a stone.  
 Thence North 42 links to a stone.

Thence West 3 chains to a stone  
 " South 1.19 ch. to a stone  
 " West 88 Links to a stone 12x12x15

Maple 10 N. 59 1/2° E. 8 L.  
 " Thence West 8.41 ch. to a stone on  
 the West line of said quarter; Thence

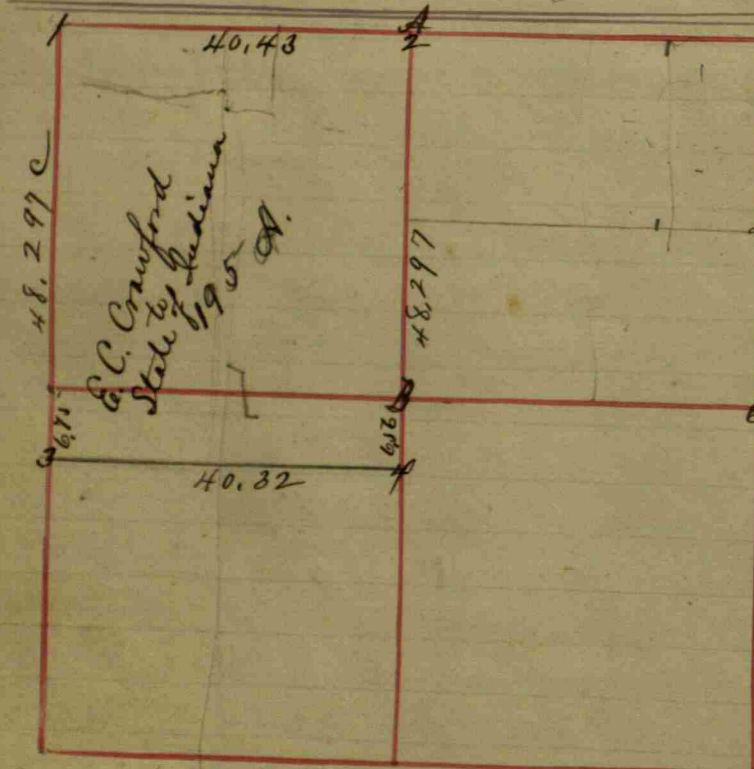
South 5.94 1/2 chains to the place of beginning.  
 Dec. 19, 1892,  
 J. W. Trotter  
 S. H. Co.

1272  
 19037

16827  
 13-937

1827  
 237  
 15,923

Section 3. T14 North, Range N. 1 East. Owners names & Co. Witnesses



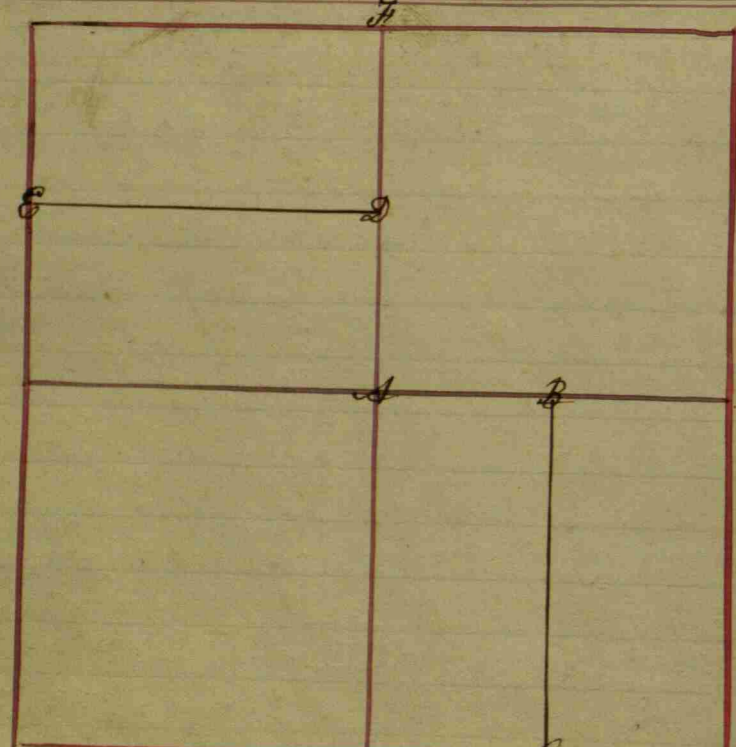
Owner's name & Co.	Witnesses	Dr.	Bearings	Dist.
Center of Sect. 3	a Beech	9	N. 65° W	46
	1 a Ditto	11	S. 11 1/2° E	14 1/2
Center North of S.W. 1/4	a Beech	18	N. 66 1/2° W	27 1/2
	1 a Ditto	24	N. 60 3/4° E	52
South 1/2 mile Post Relocated	a Cherry	5	N. 42 1/4° E	66
	1 a B. Oak	6	N. 53° W	41
S.W. corner of Sect. Relocated	a Beech	19	N. 34° E	44
	1 a Hickory	26	S. 2 1/4° W	29
Center W. of S.W. 1/4	a Hickory	24	N. 77 1/2° E	16
	1 an Ash	9	S. 23° W	32
Center S. of S.W. 1/4	a B. Oak	6	N. 16 1/2° E	32 1/2
	1 a P. Oak	12	S. 28° E	45
Corner 5 7/8 Rods N. of Sect. corner	a B. Oak	34	N. 56° E	26
	1 a W. Oak	6	S. 87° W	30
Center of S.W. 1/4	a P. Oak	6	S. 25 1/2° E	36
	1 Ironwood	4	N. 45° E	1 1/2
5 7/8 Rods N. of S. 1/2 mile Post	a Beech	19	N. 62° W	24 1/2
	1 a Ditto	22	S. 60° E	12
			Book C. p	23
Joseph Jessop			a Survey for in Section 3	
Center of Sect. (old witness trees standing)				
Center N. of Center	an Ash	6	S. 43 1/2° E	46
a Rock 10+14	an Oak	40	S. 6 1/2° E	45 1/2
North 1/2 mile	a Beech	9	N. 79° E	29
Center E. of N.E. 1/4	a Rock 8+12 set from Hadley's witness			

Owner's name & Co.	Witnesses	Dr.	Bearings	Dist.
Section 3.	A a Beech	10	N. 78° E	27
	1 a Hickory	18	N. 63° W	50
Center of Section	B a Walnut	2	S. 85° W	29
	1 a Ditto	2	N. 83° E	34
1/2 mile Post E. of center Relocated	a Beech	12	N. 40 1/2° W	48
	1 a Sugar	10	N. 69° E	61
80 Rods N. of center (Not quite clear)			Book C. p	14

See next page for bet.

Owner's name & Co.	Witnesses	Dr.	Bearings	Dist.
East 1/2 mile a	Rock 8 in. thick 18 by 21 in			
	Book C. p 153			
State farm 195 A. off N. side W. 1/2 Sec.				
3- Stone 12 X 18	Stone		N. 47° E.	20 1/2 L.
4. Stone 18 X 42	Stone		N. 81° W.	28 1/2 L.

Section 4 T14 North Range No. 1 East. Owners names, Co. Witnesses or Bearings Links



N. W. Cor. Sec. 4 Relo  
 dated at Rock 12 by 20  
 Book C. p 148

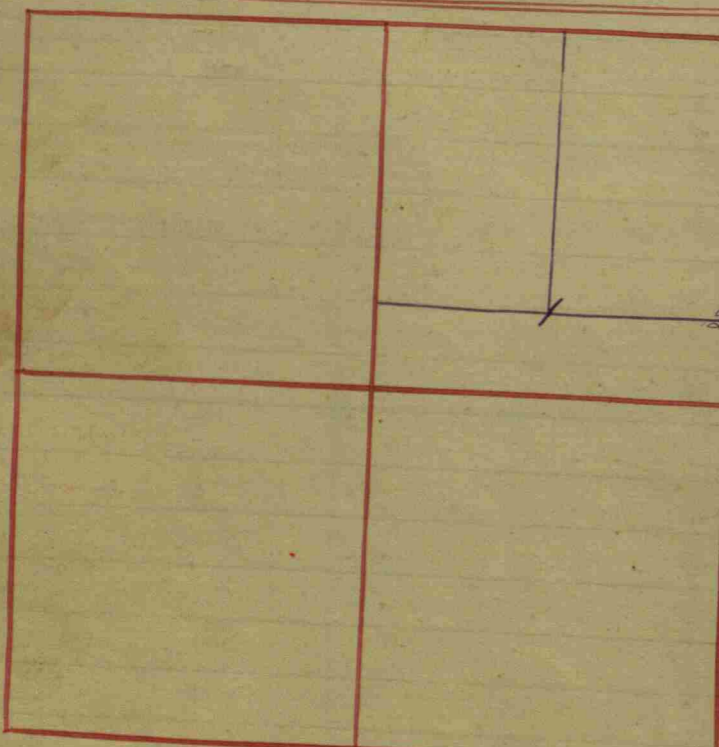
Section 4	Owner's names	Co.	Witnesses	Or	Bearings	Links
A	a Sugar	7	S. 12° E		34	
	a Beech	19	S. 57° W		14	
B	a Beech	15	N. 56° W		4 1/2	
	a Ditto	18	S. 24° E		40 1/2	
C	a B. Gummi	28	West		23	
	a M. Oak	30	S. 32 1/2° W		41 1/2	
D	a Sugar	8	N. 72° E		4	
	a Beech	20	S. 25 1/2° E		33	
E	a Beech	10	N. 5 1/2° E		11	
	a Sugar	16	S. 22° W		27 1/2	

at the top

Owners names, Co. Witnesses or Bearings Links



Section 5. T4 North, Range No. 1 East. Owners names &c. Witnesses. B. Bearings Links



N. Fletcher survey  
Beginning at SE corner  
West of Center of Sec. a Stone  
Thence N. 35 Rods 3/2 links a Stone  
Thence E. to E side of the Sec.  
a Rock  
Thence South to Beginning:  
March 26. 1867; Book p 197

Section 5 N. E 4  
1 is a W. Oak 24 N. 63.° E 59  
+ a bitto 36 S. 71.° W 145  
2 a W. Oak 30 S. 83.° W 83 1/2  
+ a Beech 14 N. 4.° E 39 1/2  
Plat. Sec. on Book p 260

Thomas Davis 21.70  
tional 1/4; Beginning  
at West 1/2 mile Post: Thence East  
on line 86 Poles + 18 links  
a Stone 24 + 20 + 15  
Thence N. 25.° W. 36 Poles  
+ 2 1/2 mi: a Stone 24 + 15 + 9  
Thence N. 86.° W. 38 poles +  
about 15 mi. a Stone 28 + 24 + 15  
Thence N. 83.° W. 36 Poles to Sec.  
line a Stone 20 + 30 + 8

Owners names &c. Witnesses. B. Bearings Links  
1/2 mile Post on the  
E. of center of Sec. 32 a good  
Center of Sec. a fine  
Stone 24 + 16  
1/2 mile Post on S.  
Relocated a good  
Stone 3 by 2 feet

North. Sec. 5 Relocated 42 1/2 links  
an Elm 20 S. 87.° W 115  
a Buckeye 12 S. 19 1/2.° W 132 1/2  
+ a B. Walnut 4 S. 39.° E 48  
a Sugar 15 S. 23 1/4.° E 147  
+ a Yucca 20 N. 53 1/2.° W 116  
Book p 79

Owners names &c. Witnesses. B. Bearings Links

Thence North 34 Poles  
12 links: a Stone 26 + 15 + 14  
and a Stone 15 S. 83.° E 36  
Book p 371

John Miles & S. M. Lawrence Division of near 10 acre part in  
Sec. 5. + part in Sec 32  
one third to Lawrence  
+ 41 Rods + 20 links North  
Stone 10 + 8 + 6

Thence N. 10.° W 114 1/3  
National Road:  
N. 67.° E to a line  
all Miles. the lat  
Lawrence portion  
Stone: Thence S. 71.° E  
114 Rods + 1/2: Thence  
Thence S. 6 2/3 Rods:  
44 3/4 Rods: Thence East  
South of 1/2 mile 51.

See Page 37 put there by mistake  
Journey Little & P York

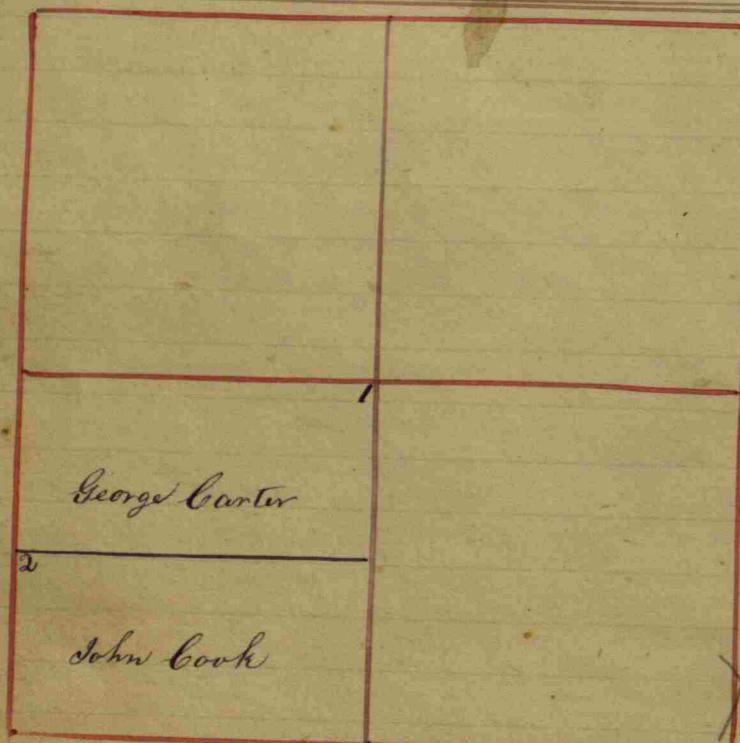
Owners names &c. Witnesses. B. Bearings Links

1/2 mile relocated by measurement + set 42 1/2 links East of S 1/2  
mile of Sec 32. 2. 15. 17. 18.

For York, Hornaday & Little  
Beginning at N 1/2 mile of Sec. 5. Thence South 5 1/2° E.  
2. 52 1/2. Thence S 67° W. 49. 56 P. to a line stone set by  
a black locust 20.° N 36° E 68 1/2 links - Thence  
North 23° W. 19. 54 P. to a line stone on the Town  
ship line. with an apple tree 10.° N 56° E 187 1/2 links  
Thence East with said line 53. 18 P. to same N E rule, or  
place of Beginning - Estimated to contain 3. 30 A. + or -



Section 6 No. North, Range No. 1 East. Owners names & Co. Witnesses or Bearings Links



West 1/4 mile, <sup>each</sup> ~~each~~ half mile as far North North of the other 6 poles + 17 links South and the 1/4 mile Stone E 1/2 mile a Stone a small one on top + a Stone 22+16+14 S.E. corner a Stone 14+12+9

on West side from the full of it as the S.W. Cor. is a Stone 24+20+15 - and a Stone about the same in the line 6 poles + 17 links still South; found about 3 feet deep + an Elm 28 N. 7° E 118 + a B. Walnut 11 S. 50° E 73 an Ash 40 S. 30° E 42 + a R. Oak 24 N. 42° W 58

Book C. p. 270

Center E of N fractional <sup>1/4</sup> ~~1/4~~ half (as above) a Stone 26+14+15  
 Center W of 1/4 a Stone 20+8  
 Thence East 42 poles + 20 links a Stone 9+8+7; + a Stone on top  
 J. M. Pope 20 acres  
 S.E. cor. a Stone 18+14+12  
 West line of same 20 a 74 poles + 5 links;

Book C. p. 271

Beginning 42 Rods <sup>1/4</sup> ~~1/4~~ + 10 links East of Center West of South 15 Rods to Center of Road. line; Thence West 52 Rods + 5 links National Road on line E + W  
 Beginning in Center of in Center of N 1/4 of Section a Stone 18+15+11; Thence Still North 1 Rod to Center of Road. Thence S. 71° W. 55 Rods;

Book C. p. 302

Owners names & Co. Witnesses or Bearings Links	Co. Witnesses or Bearings Links	Links
Small 6 poles + 10 links	N + S. and E + W 11 poles + 15 links.	
George Carter the 1	a Beech 20 S. 88° E	33
N 1/4 of S.W. 1/4 + N.E. corner + a W. Oak	40 S. 55° W	72
South 1/4 on East side large	37 links;	
John Cook 2	a Beech 10 N. 26° E	35
1/4 of S.W. 1/4 + N.W. corner	+ a Ditto 20 S. 4° E	25
William Pope the N. 1/4 of S.E. 1/4 + S.W. corner	a Beech 14 N. 5° W	15
	+ a Ditto 14 West	12

Book B. p. 232

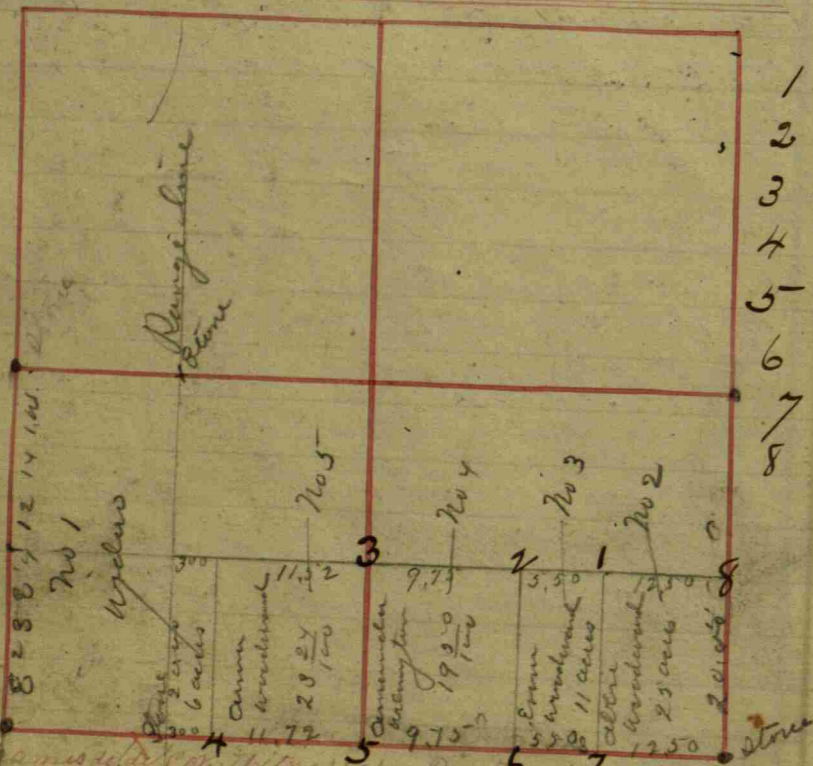
Owners names & Co. Witnesses or Bearings Links For Nancy Pennard. A part of the N. of Sec. 6.

Beginning at N.E. cor. of Sec. Thence south 69 1/2 to Cen. of Lumberton Road. Thence S. 7 1/2° W. with said road about 120, 40 P. to a point Witnessed by a Beech 20 in S. 4° E. 71 Links. Thence N. With sea bearing to the Township line. West a Walnut stump N. 76° W. 252. Thence E. 114. 72 P. to beginning. Jimmy Little & John Day Survey for. (On T. line 29. 56 R. W. of cen. S. S. W. 4 1/2 (Griggs cor) N. 33° W. 19. 56 R. N. 82° W. 7. 56 R. S. 20° E. 45. 26 R. N. 75° E. 11 R. N. 23° W. 23. 30 R. to starting point Part of this is in Sec. 32. T. 15. Balin Sec 5 T. 14 N. R. 1 E. 29. 20 R. W. of N. 1/4 on T. line 44 55. 24 R. S. 47. 32 R. stone ramp 16 X 13 X 2. + a B. 80° E. 35. 24 Rods a Stone 19 X 13 X 7 S. 14 1/2 E. 24. 0 1/2 R. A stone 13 X 7 X 6 with a black locust 24 N. 1° E. 7 1/2 Rods B to east 24 in N. 32 W. 97 L. N. 75 1/2 E. 30. 56 R. + N. 102° W. 64. 36 R. to beginning

Book C. P. 371

C. B. Webb a survey for, Beginning at S.E. cor. of N. 1/2 of N. 1/2 of N.E. 1/4 of 6 sec. Thence West 5.71 chains  
 " North 3.75 " to Cen. of National Road  
 " N. 71 1/2° E. in an. of road 59 1/4 1/3 chains  
 " South on line of said N. 1/2 N. 1/2 5.33 1/2 ch  
 to place of beginning equals 2.60 A.

Section 7 1/4 North, Range 14 East. Owners names & Co. Witnesses. Dr. Bearings. Links



No.	Description	Bearing	Links
1	Boulder	10 inch	
2	"	15 "	
3	"	12 X 6 X 6	
4	"	12 inches	
5	"	15 "	
6	"	16 "	
7	"	11 "	
8	Stone	8 X 14 X 11	
	Stone	S 61 1/2 W	25
	Stone	E 61 1/2 E	25

Owners names & Co. Witnesses. Dr. Bearings. Links

Commencing 13 Rods  
N.W. cor Section 7 1/4  
Sec. 6 (not much in  
this any how) Book 1 p 234

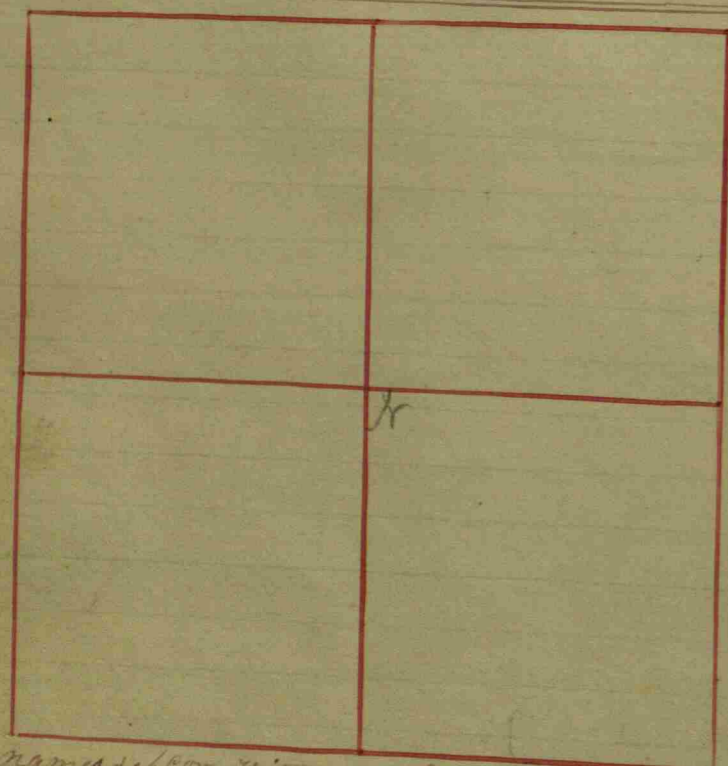
Sec. 7  
1/4 mile East on the  
of the full corner  
at Stone 20+18+12  
a little better this

West 12 Rods + 9 links North			
at N. Oak	36	N. 27° E	94
+ a Ditto	36	S. 87° W	98
			Book 1 p 308



Owners names & Co. Witnesses. Dr. Bearings. Links

Section 8 T14 North Range N. 1 East.



Owners names & Co. Witnesses Dr. Bearings Links  
 Cent N. S. 1/4 Stone 8x14x11 Nov 26-1907  
 Stone 36 1/2 N 25 L.  
 Do 76 1/2 E 25 L.  
 W. F. Franklin Sur.

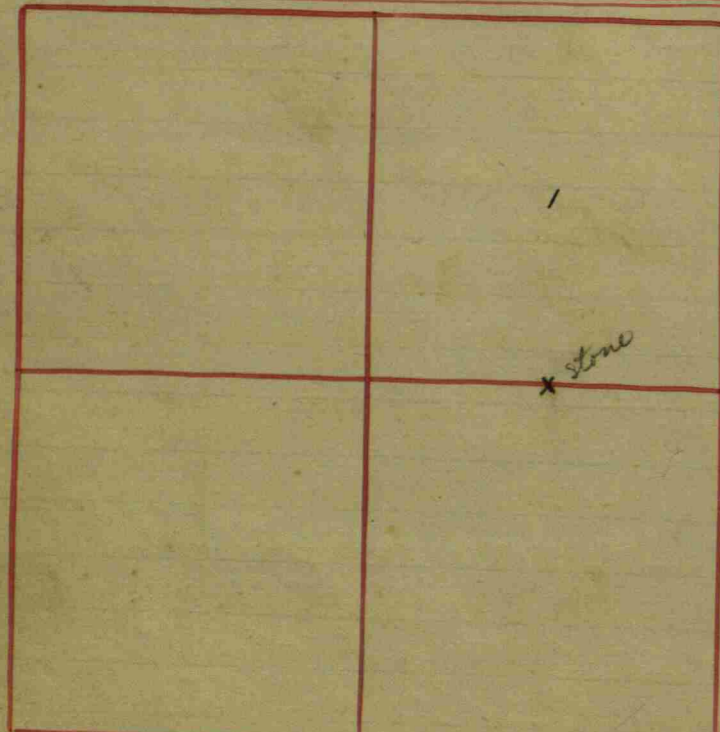
Owners names & Co.	Witnesses	Dr.	Bearings	Links
1/2 mile Post on North	at Sycamore	10	N. 40 1/2 E	75
a good Stone deep in the mud	at Sycamore	10	S. 73 W	28
Center of Section	at Bush	28	N. 27 W	6
at Stone 28+15+6 = smooth	at an Ash	12	S. 88 1/4 E	135
	Book C. p.			308

Brown, Davis, Townsend, Howarday and Pulley, a Survey for in sections 8 and 9.

- Cent. S. of S. E. 1/4 Sec. 8 - Stone 9x12x24  
 Elm 8 N. 62 3/4 E. 55 1/2 feet.  
 W. Oak 24 S. 32 3/4 E. 13 1/4 feet.
- S. E. cor. of Sec. 8 - Stone 6x14x18  
 Elm 36 S. 41 E. 26 1/4 feet.
- Cent. S. of S. N. 1/4 Sec. 9 - Stone 8x10x14  
 Bush 28 N. 49 W. 12 feet.  
 Do 25 S. 40 1/2 E. 24 1/2 ..
- Cent. N. of S. E. 1/4 Sec. 8 - Stone 12x18  
 Sugar 30 S. 6 3/4 E. 45 1/2 ft.  
 Sycamore 6 West 59 3/4 ..
- 27 Rods N. of E. 1/2 mile stone Sec. 8 - stake  
 Sycamore 40 N. 25 3/4 W. 14 ft.  
 Oak Keys 12 N. 11 1/4 E. 20 1/2 ..
- 197 feet E. and 424 ft. N. 5 1/2 E. in cen. of road from S. N. cor. of Sec. 9 - Stone 12x12  
 Kit Stone 7x12 West 15 1/2 ft.
- Then N. 5 1/2 E. in cen. of road 30 rods to a Stone 6x10  
 Sycamore 4 N. 46 W. 19 1/3 ft.  
 Stone 6x10 West 19 ft.

Van. Johnson, Marion Townsend and Jas. W. Prother sworn chairman - June 7, 1890

Section 9 T4 North Range No. 1 East. Owners names & Co. Witnesses & Bearings Links



**MOON'S** Estate in Sec. 9 & 16. Together. N<sup>1</sup>/<sub>2</sub> of N.E<sup>1</sup>/<sub>4</sub> of Sec. 16: 16<sup>Probably</sup>

The S.E<sup>1</sup>/<sub>4</sub> of Sec. 9 and S.E. corner of the tract, or Center of N.E<sup>1</sup>/<sub>4</sub> of Sec. 9

Center of N.E<sup>1</sup>/<sub>4</sub> of Sec. 9

Old Post

The Widow's Dower of the tract: Thence 116 Poles & 10 links, where

Thence N. 88<sup>1</sup>/<sub>2</sub>° W 80 Poles where

Thence South with the line 118<sup>1</sup>/<sub>2</sub> Poles to Center of N.E<sup>1</sup>/<sub>4</sub> of Section 16: S<sup>1</sup>/<sub>2</sub> corner of the Dower

Thence East to the Beginning: Containing 60 acres

Ransom Moon's Portion 1<sup>1</sup>/<sub>2</sub> acres more or less off the N. end of the 85 Poles N & S and 82 Poles N of S.E<sup>1</sup>/<sub>4</sub> of Sec. 9 where a Stone 12 x 10<sup>10</sup> -<sup>are standing</sup>

Witness	Bearing	Links
a Cherry	N. 84° W	24
a Beech	N. 34° E	24
a Walnut	S. 40° E	29
a Buckeye	N. 8° E	13
a Beech	N. 81° E	17
a Sugar	N. 16° E	39
a Beech	S. 88 <sup>1</sup> / <sub>2</sub> ° E	10
aun Ash	N. 30° W	18
a Beech	S. 72° E	13 <sup>1</sup> / <sub>2</sub>
a Ditto	S. 26° W	27
a Buckeye	S. 83° W	37
a Hackberry	S. 77° E	36
aun Ash	N. 84° E	15
a Hickory	S. 25° E	18

Owners names & Co. Witnesses & Bearings Links

Calvin Townsend

Part of N<sup>1</sup>/<sub>2</sub> of S<sup>1</sup>/<sub>2</sub> W<sup>1</sup>/<sub>4</sub> East across said N<sup>1</sup>/<sub>2</sub> to creek; Thence thence to West line Road & 24 links to the 44 Acres

1 Centre N.E<sup>1</sup>/<sub>4</sub> of 9. a Stone 12 x 15

Witness	Bearing	Links
a Stone	N 24 W	12
a Beech	S 72 W	35 <sup>1</sup> / <sub>2</sub>

Book C. p. 179

balance in base

Owners names & Co. Witnesses & Bearings Links

where

a Cherry 12 N. 84° W 24

a Beech 24 N. 34° E 24

a Walnut 30 S. 40° E 29

a Buckeye 6 N. 8° E 13

Thence West across the 1/4 82 Poles

Thence North about 85<sup>1</sup>/<sub>2</sub> Poles to the Corner not settled on account of Parties not having lawful notice:

Thence East with the line about 82 poles to the Beginning

Asa Moon's Portion Beginning at the 1/2 mile tree East of Sec. 9: Thence West 82 poles to Ransom N.E. corner

Thence South 104 Poles & 23 links

Thence East nearly 82 poles to Section line.

Thence North 104 poles to the Beginning: Containing 53<sup>1</sup>/<sub>2</sub> acres more or less

Rachel Barker's Portion Beginning at the S.E. corner of Asa's Portion: Thence West with his South line across the E<sup>1</sup>/<sub>2</sub> of S.E<sup>1</sup>/<sub>4</sub> of Sec. 9 about 82 poles: Thence North 20 poles: Thence West with 82 poles to the West line where is

Witness	Bearing	Links
a B. Ash	N. 76° E	16
a Ditto	N. 76° E	16 <sup>1</sup> / <sub>2</sub>
a Buckeye	S. 76° W	18 <sup>1</sup> / <sub>2</sub>

Thence East across the W<sup>1</sup>/<sub>2</sub> of the 1/4 about 82 poles at the top again

Owners names & Co. Witnesses & Bearings Links

where is

aun Ash 12 N. 61° E 24

a Oak 18 N. 5° E 50

aun Apple tree 8 S. 70° W 6

Thence South 4 poles

Thence East about 82 poles to Section line 16 poles North of Sec. 9 corner where is

a Beech 20 South 25

a Oak 24 N. 76° E 21

Thence North 42 poles to the Beginning: Containing 57<sup>1</sup>/<sub>2</sub> acres more or less

Mary Moon's Portion Begins at the S.E. corner of Rachel Barker's tract 16 poles North of S.E. cor of Sec. 9: Thence West across the East 1/2 of about 82 poles: Thence North 4 poles 1/2 of 1/4 about 82 poles; thence far with Rachel Barker's line: Thence South 52 poles where is

Witness	Bearing	Links
a Beech	N. 20° E	1
a Ditto	S. 51° E	8 <sup>1</sup> / <sub>2</sub>

Thence East across N<sup>1</sup>/<sub>2</sub> of N.E<sup>1</sup>/<sub>4</sub> of Sec. 16 about 164 poles where is

Witness	Bearing	Links
a W. Oak stump	N. 6° W	13
a Sugar	S. 39° E	34

Thence North 48 poles & 10 links to the Beginning: more or less

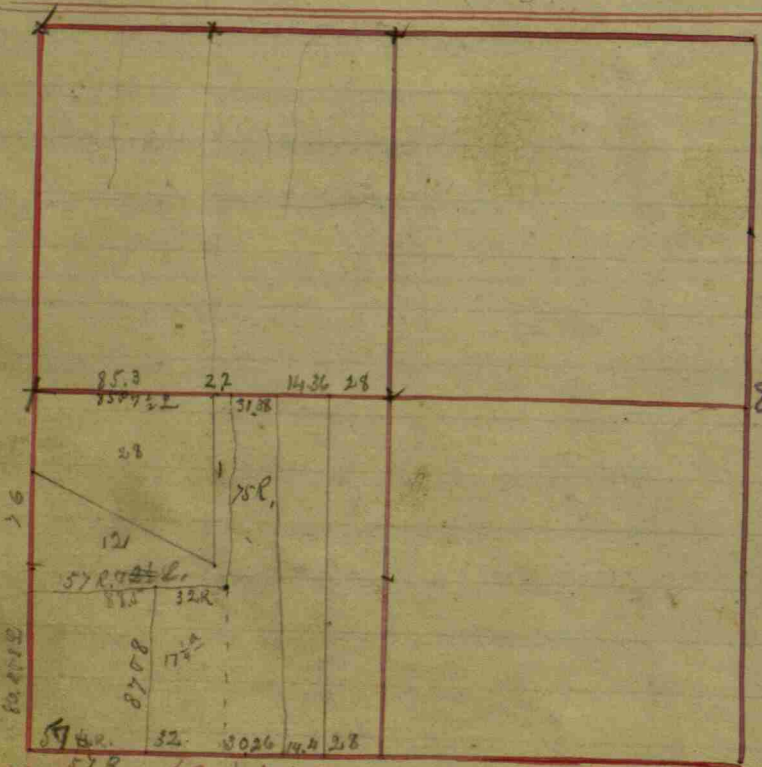
John Moon's Portion. Beginning at the S.E. corner of the North 1/2 of the 1/4 8 poles: Thence West with Mary Moon's S. line see next page for balance

Section 9 Continuation of

owner names & witnesses	Dr. Bearings	links
about 164 poles to the Thence South 48 poles with South line of containing 49 acres 9 <sup>1/2</sup> M <sup>2</sup> 1849	West line of the tract: to the S.W. corner: Thence East the tract to the Beginning + 32 square poles more or less: Book C. p. 38	
William Townsend Sec. line between 1/2 mile Past 52 poles poles + 4 links to N. side: Thence S 14 in. standing on an S. 33 <sup>3/4</sup> E 50 poles to Thence South along a good Stone; Thence line dividing the S. 7 <sup>1/4</sup> N + S Thence North with where is to the Bank of the ditch Thence with the where is Thence N. 67 <sup>1/2</sup> W 12 P. + 16 links Thence N. 76 <sup>1/2</sup> W 19 poles Lycamore marked on to the Beginning (guessed to contain 11 acres)	Mill lot: Beginning on the Sec. 8 + 9 and South of the + 24 links: Thence N. 70 <sup>1/2</sup> W 14 at Lycamore 30 Cor. marked on the 24 <sup>1/2</sup> E 16 poles to a White Walnut Island in the Mill pond: Thence a good Stone in County Road; the center said Road 30 poles N. 85 <sup>1/2</sup> E 66 poles + 23 links to the a Buckeye 10 S. 85 <sup>1/2</sup> W 6 + an Elm 22 S. 36 <sup>1/2</sup> E 12 said line 10 poles + 10 links an Elm 8 S. 56 <sup>1/2</sup> E 30 + an Ash 20 S. 62 <sup>1/2</sup> W 11 meanders thru of N. 87 <sup>1/2</sup> W 15 poles a Log an 12 N. 78 <sup>1/2</sup> W 54 a Beech 22 S. 40 <sup>1/2</sup> E 47 Thence N. 22 <sup>3/4</sup> W 51 poles + 15 links to a the N. side: Thence N. 70 <sup>1/2</sup> W 23 poles Book C. p. 103	

owner names & witnesses	Dr. Bearings	links
S 1/2 mile Located eye Stone 12 x 15 x 8 Cottonwood	S 12 W N 8 1/2 E	15 21

Section 10 Twp North, Range 1 East. Owners names & Co. Witnesses



Owner's name & Co. Witnesses	Dr.	Bearings	Links
1/2 mile Relocated	a W. Oak	S. 23° W	48
a Stone 16+20	+ a B. Oak	N. 19 3/4° W	119 1/2
1/2 mile Relocated	a B. Oak	S. 43 3/4° E	100
a Stone	+ a Sugar	N. 20° E	73
1/2 mile Relocated	a n Ash	N. 60° E	50
a Stone 16+12	+ a W. Oak	N. 51° W	163
1/2 mile by running & measuring	a P. Oak	N. 74 1/2° E	62 1/2
Eight Rods west of E.P. m	+ a Sugar	S. 83 1/2° W	32 1/2
Center of Section	a B. Oak	N. 63 3/4° E	87
a Stone 36 in. long	+ a Ditto	S. 72° W	108 1/2
Center East of S.E. 1/4	a W. Oak	N. 25 1/2° W	15 1/2
a Stone 16+24 flat	+ a Sugar	S. 22° E	28
Center of S.E. 1/4	a W. Oak	S. 64 1/2° W	30 1/2
a Stone 16+24	+ a B. Oak	S. 4 1/4° E	106
		Book C. p. 213	

Owner's name & Co. Witnesses	Dr.	Bearings	Links
Center E. S.E. 1/4 Sec. 10.	a Sugar	N. 50° W	9
	+ a Ditto	S. 28° E	30
North poles Post	a Cherry	N. 42 1/2° E	56
	+ a B. Oak	N. 53° W	41
N.W. corner Sec. 10	a Beech	N. 35° E	44
	+ a Hickory	S. 40 1/2° E	41
	+ a Hickory	S. 2 1/2° W	29
Center North of N.W. 1/4	a B. Oak	N. 16 1/2° E	32 1/2
	+ a P. Oak	S. 28° E	95
		Book C. p. 250	

28 acres in N.W. corner or in N.W. corner of 1/2 of the S.W. 1/4 of Sec. 10 North of the County Road; Beginning at Center 1/2 of S.W. 1/4 Thence South 32 1/2 poles Thence S. 65° E with the Road 93 poles + 23 links a Post E. of the branch a W. Oak 18 N. 3 1/2° E 42 1/2 a Ditto 18 N. 41 1/2° W 33

bal. next page

Owner's name & Co. Witnesses	Dr.	Bearings	Links
Thence North 72 Rods	a W. Oak	West	15
16 links	+ a Ditto	N. 43 1/2° W	55
Thence West with the line 85 poles + 7 links to Beginning			Book C. p. 267

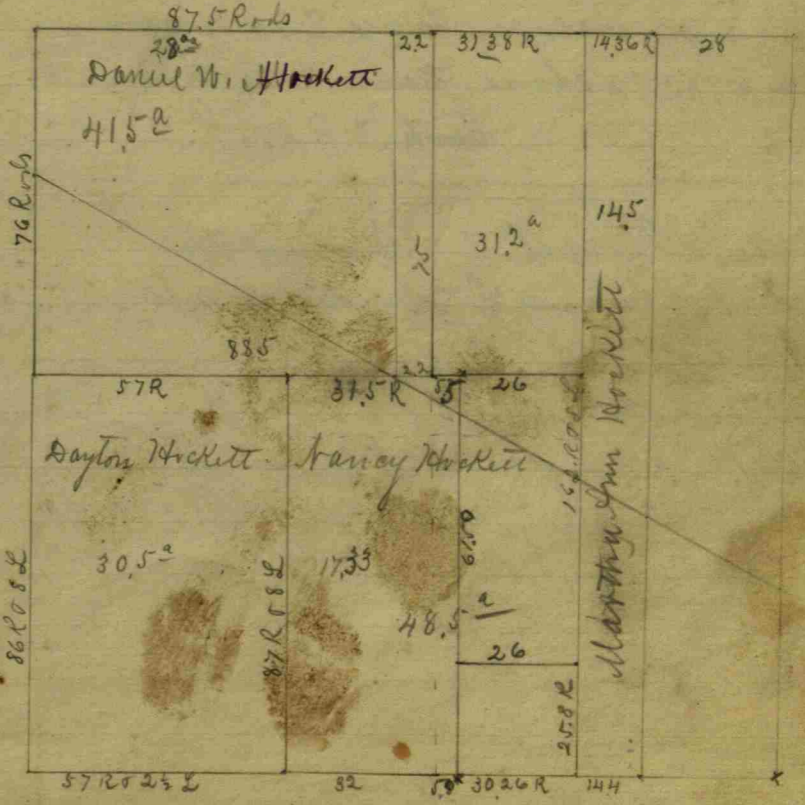
2 1/2 E. of 28° cor - a Stone  
87 1/2 Rods E. of 75 Rods South of the W.P. m -  
a White Oak - 18 N. 23° W 81 L  
76 Rods S of W.P. m -  
86 " S.L. North of S.W. cor of Section,  
a flat Stone 4 x 8 x 12 - a Beech N. 67° E 40  
18 1/2 Rods on the South, Daniel Hockett best grey west,  
thence East 57 Rods a Stone,  
Witness a Birch, 10 - East on line 2 Links  
N. 83 1/2° E.

East from S.W. cor of Sec. 57 Rods + 2 1/2 links  
a Small Stone; Bunsley S. 84° West. 26.

Thence East 32 Rods to East side of offset; thence  
East 44 Rods + 16 1/2 links, to the Adkins & Middleton  
Set off a 30 Rod + 16 1/2 links to S.E. cor of  
Widows tract.

42 1/4 Rods west of E.P. m. a Stone.  
a Sherry S. 23° W 17 1/2

42 Rod + 9 links west of the center of Sec. 10  
a Stone, a Sign. S. 9 1/2° W - 11 Links -



Plot of Division of the Hockett Tract,  
School Lot no. 4, Guilford Sp. D. Hadley, Trustee,  
Begins 4 ch. S. of N.W. cor. of Sec. 10 S. 14 N. + N. 12. Thence E. 2 1/2 ch.  
West by a scrub Oak 10 1/2 S. 15° W. 45 links, Thence S. 11 ch.,  
Thence W. 2 1/2 ch. to sea line. Thence N. 4 ch. to place of  
Beginning - containing one acre. July 12<sup>nd</sup> 1897.

(over)

50

sec 16 T14 NR 12

On W  $100\frac{1}{4}$  very large stone  
with a stone E  $22\frac{1}{2}$  l

Thence S  $10^{\circ}$  a stone, thence E 10 a stone,

thence N  $10^{\circ}$  a stone, thence W to beginning

Book C P 395

Arthur Maxwell. Survey for  
West 8 rds and South 10 rds from  
N.W. cor of Sec 11

a stone  $8 \times 10 \times 24$

with: Lug at  $N. 61^{\circ} E$  Dist 53 lks

" Stone S.  $78^{\circ} 10'$  Dist 17 lks

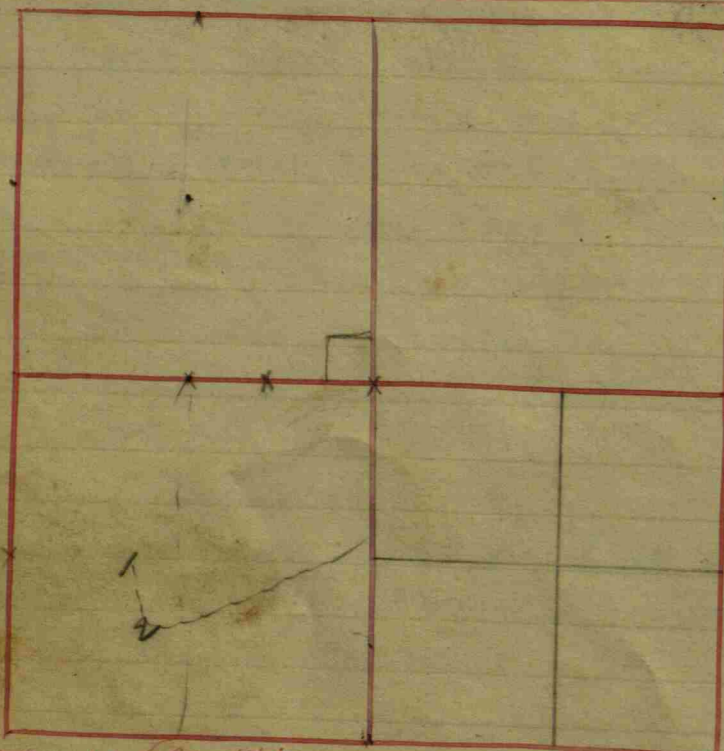
Stone is underground.

51





Section 11 Twp North, Range No. 1 East. Owners names, Co. Witnesses, D. Bearings, Links



Owner's name, Co. Witnesses	D.	Bearings	Links
Sec. 11 S. 14. R. 1 E. N. 1/4 Center of	alchery	12 S. 7 1/4 E	112 1/2
	Labugan	24 N. 6 W	238
			Book C. p. 23
Sec. 11 Center N. of Center at Stone 36 in. long	al B. Walnut	24 N. 7 W	135
	al Hickory	8 S. 43 W	30
Center N. of N. 1/4 at Stone 36 in. long	al Hickory	12 S. 24 W	124
	al B. Walnut	16 S. 66 W	191
			Book C. p. 213

Enos Blair and Center West of 1/4 Sec. 11

Brown & Joan Mill North of the 1/4 mile & the 1/4 of the Sec. at a post where is Thence West with the the S. E. 1/4 & the S. W. 1/4 of of the Sec. 6 ch. & 75 lin. a post Thence N. 4 chains & Thence S. 4 chains & containing three acres and another lot Beginning at the where is Thence S. 75 1/2 W 1 chain & 12 1/2 links to the West line of in said West line containing 35 hundredths of an acre

other: a Survey for in Sec. 11  
 al Sugar 8 N. 50 W 9  
 al ditto 14 S. 28 E 30

Lot in S. E. M. Beginning ten chains Post in the line dividing the S. E. 1/4  
 al B. Ash 11 N. 71 E 11 1/2  
 al Mulberry 10 S. 21 E 22 1/2

same variation as the line dividing  
 al W. Walnut 18 S. 31 1/2 E 36  
 al W. Elm 16 N. 6 E 40

50 links: Thence E. 6 chains & 75 links: 50 links to the Beginning; & four hundredths of an acre. dividing said Mill lot as follows  
 S. W. corner of said Mill lot  
 al W. Walnut 18 S. 31 1/2 E 36  
 al W. Elm 16 N. 6 E 40

3 chains & 12 1/2 links; Thence North Thence N. 75 1/2 E 3 chains & 12 1/2 links. the Mill lot; Thence South 1 chain & 12 1/2 links to the Beginning; deadths of an acre

Book C. p. 141

Center N. Center the joined  
 Sycamore 10 N. 50 E 52 1/2

Owner's name, Co. Witnesses	D.	Bearings	Links
Center N. S. W. 1/4 Sec. 11	al Sugar	8 N. 50 W	9
	al ditto	14 S. 28 E	30
Center of N. 1/4	al Hickory	12 S. 7 1/4 E	112 1/2
	al Sugar	24 N. 6 W	238
Center S. of center	al B. Ash	11 N. 71 E	11 1/2
	al Mulberry	10 S. 21 E	22 1/2
			Book C. p. 250

S. E. cor of Brown & Joan Mill lot relocated from al Mulberry stump standing a Sycamore 36 N. 67 W 162 1/2

S. W. cor relocated from al Elm stump a Bur oak 36 N. 52 E 85 1/2

Center of Sec. al Hick. Elm 12 N. 48 E 44  
 Stone from road al Sugar 20 N. 73 1/2 E 84  
 Cen. E. of Sec. cen. a stone 3 x 6 x 18.  
 with a 13. Walnut 16 N. 20 1/2 W 37 1/2

Survey for Pittler & Benaday  
 1 Stone 17 x 10 x 8  
 Elm 18 N. 76 W 73 1/2  
 Thence S 20 S. 21 links to line of road  
 2 Stone 18 x 10 x 8  
 Syc 11 W 7 1/2

Survey for Cyrus Osborne Trotter and E. E. Bonaday Aug 21 - 1903  
 15 25 ch 37 N. 1/2 Sec. to mark off 60 Rods the 1/2 mile runs over 67 links and thence 25 links to give to the 60 rods and 4 2 links to the 100 Rods.

Iron gas pipe 6 feet long  
 by Sycamore 2 x S 3 E 73 1/2  
 51 Rods & 1 link E of Cen. W center -  
 Stone 20 x 14 x 5  
 Ash 2 x S 3 E 47 1/2  
 B. Walnut 4 S 6 1/2 E 33  
 28 Rods & 1 link N of Section Center Iron pipe  
 Sycamore 4 N. 43 W 43  
 Locust 4 S 51 1/2 W 23  
 28 Rods & 8 links N of Section Center Iron pipe  
 Sycamore 10. S 77 W 21 1/2  
 W. F. Franklin S. E. Cor

Survey for Hadley & Rogers Apr 30 1906  
 West from Section N. of N. 1/4  
 a Stone 15 x 14 Wit; Stone 6 x 8 1/2 37 E  
 Dist 26 1/2 M. thence South 80 Rod Stone set stone 12 x 14, Wit; Stone 10 x 10  
 Bear: 1/38 1/4 E Dist 24 M.



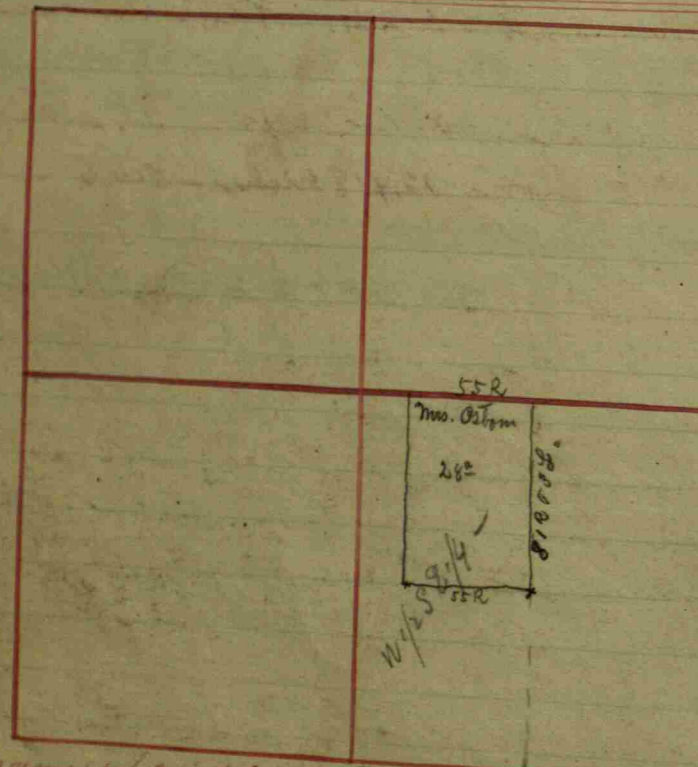
54

Common corner between sections 1, 2, 11, and 12 -  
stone 11x16x21 found and witnessed by south  
edge of concrete end post - North  $20\frac{52}{100}$  ft.  
12" Oct. 1944 Stanley Shurtle

See 11-15-18 for a survey intended to be  
recorded here by C. W. Thompson.

55

Section 12 5th North Range N. 1 East. Owners names, Cor. Witnesses, Dist. Bearings, Links



Owner names	Cor. Witnesses	Dist.	Bearings	Links
Bratton, Newlin, White	other, a henny for in Sec.	12		
Center of the Sec. Relocated	at W. Oak	12	N. 71° W	44 1/2
Center North of N. 1/4	La Bitto	12	N. 31° E	20 1/2
Center South of Stone 10x22, N. 1/4	at W. Ash	10	S. 1 1/4° W	55 1/2
	La Sugar	16	S. 45° E	49
	at Hickory	13	S. 8 1/2° W	41
	at Sugar	16	N. 42 1/2° E	54
South 1/2 mile Post Relocated Stone (10x20)	at W. Ash	14	N. 90° W	52
	La Beech	15	N. 42 1/2° E	94
S. East corner of the Remains of old witness trees.	Section Relocated from the			
Center South of S. E. 1/4	an Ash	10	S. 71 1/2° E	54 1/2
	at Hickory		N. 72° E	27
	at Hickory	24	S. 81 3/4° E	65
	at Beech	16	N. 85 3/4° W	42
Center North of Stone 16x18x8 melw, S. E. 1/4	an Oak	24	N. 33 1/2° W	34
	at R. Oak	30	N. 41° W	132
	at Beech	16	S. 22° W	32
Center North of a Stone 20x14x8 + N. E. 1/4	at W. Oak	46	S. 53 1/4° W	114
All the corners in Substantial Stones	the above Section to be set with (do say the parties)			
				Book C. p 141
Sec. 12. 5th. 16				
East 1/2 mile Post Relocated, on old witness satisfactory a Stone 18x10x8	at henny	20	N. 61 1/2° E	17
				Book C. p 266

Owner names	Cor. Witnesses	Dist.	Bearings	Links
Center South of S. 1/4 of Sec. 12	Stone witness at W. Oak	6	N. 59° W	23
at Stone 18x20	at W. Oak	6	N. 38 1/2° W	66 2/3
Center of S. 1/4	at W. Oak	32	S. 46 1/2° W	55
Center on West of S. 1/4	at W. Oak	15	S. 24 3/4° E	45
Center North of N. 1/4	at W. Oak	15	S. 50 1/2° W	58 1/2
	at Sugar	15	N. 23° W	68
	at Sugar	15	N. 1 1/2° W	46
	at Beech	20	N. 45 1/2° W	63
	at Hickory	10	S. 72 1/2° W	36
	at henny	10	S. 62° E	35
				Book C. p 23

Owners names, Cor. Witnesses, Dist. Bearings, Links

1/2 mile stone = witness a Birch 24. N 20 1/2° W - 76 1/2

S.W. cor of Section also cited from Government Truss, a Stone 12x18 inches - N 10° E 6 1/2

55 Rods west of centre N. S. E. 1/4 a stone 20x12 witness Red oak 20 = west on Line 10 1/2

do White " 24 S 50 1/2° E - 14 1/2

South from centre N. S. E. 1/4 - 160 R + gain 16 Links = 1/2 way 81 1/2 + 3 Links: Stone at centre S. S. E. 1/4 24x20x20 =

witness Birch still standing of Red oak S 38 1/2° E 114 1/2 Links

Centre S. E. 1/4 stone stone (10x20x20) witness stone S 83 1/2° W = 33 1/2

55 Rods west of centre S. E. 1/4 a small stone 10x12 Bearing (S 32 1/2° W) Mulberry (Bumble) (76 1/2)

Section 13 The North Range No. 1 East. Owners names, Co. Witnesses, Dr. Bearings, Links

Owners names, Co. Witnesses	Dr.	Bearings	Links
1/2 mile Post on West of Sec. 13 Relocated	a Hickory	N. 80 3/4° E	90
Center of Section	+ a Mr. Elm	N. 82° W	57 1/2
	a Beech	N. 54 1/2° W	7 1/2
	+ a Ditto	N. 69° E	42 1/2
Center on North of S.E. 1/4	a Beech	S. 77 1/2° W	48
	+ a Maple	S. 76 1/2° E	47 1/2
Center on S. side of S.E. 1/4	a Hickory	N. 78 1/2° W	9 3/4
	+ a Ditto	S. 12° W	28
1/2 mile Post on S side of Sec. Relocated	a Maple	S. 30 1/4° W	33 1/2
	+ a Hickory	N. 31 1/2° E	78 1/2
Book C. p. 246			
Section 14 + 13, S. 14 - 1 East Together			
The East 1/2 of the NW 1/4 of Section 13; East	of 11; and the West 1/2 of the NW 1/4 of Section 13; East	a cross, over measure 45 links; end; being 160 Rods + 20 link E. Dr. by 59 R. 9 link = N. 9	
60 acres off the N.E. Corn. of NW 1/4 of Sec. 13. +	the S.E. Corner of the tract (or 60 acres)	a P. Oak 24 N. 23 1/2° W 15 2/8	
a 1/4 of an inch NW. section	a Stone witness	a Stone 18 x 15 x 8. Stone witness S 86° W 21 1/2	
Then West 1/4 of a mile	a Sugar	S. 18° W 3 1/2	
a Stone 18 x 9 x 8	+ a Buckeye	N. 12° E 22	
3 1/2 Rods S. of it	is another Corner Stone	26 x 18 x 10; (Straight)	
North 1/2 mile of Sec. 14	one old witness; a Stone	22 x 9 x 5. the Cor.	
SW Cor. of Mullikand	land a Stone	26 x 7 x 3 the Corner	
Set from old witness	standing;	Book C. p. 256	



Owners names, Co. Witnesses, Dr. Bearings, Links

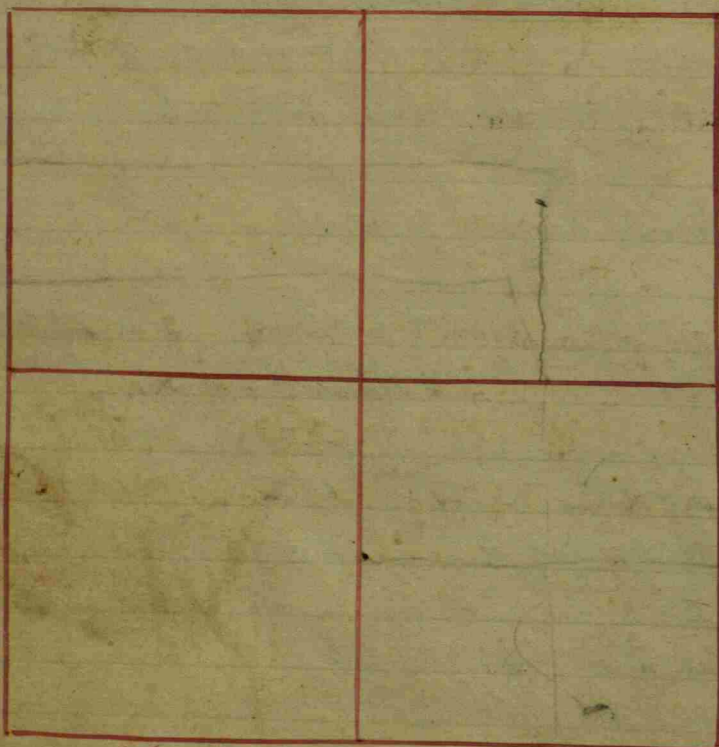
John Sheets a survey for in Sec. 13 T. 14 N. R. 1 E. and in Sec. 18 T. 14 N. R. 2 E.			
James Spoon and Frank Dakin sworn Chainmen			
19. 75 1/2 ch. N. of S.E. cor. of Sec. 13 is a Stone 7x14x15	a Hickory	S. 78 1/2° E	14 Links
	Do	N. 88 1/2° W	16 "
19. 84 ch. N. of S. 1/2 mile stake of Sec. 18 is Stone 11x17 (14-24)	B. Walnut	S. 11 3/4° E	42 "
	J. H. D.		
A. Stone			
B. 10. 26 1/3 ch. S. of Cen. E. of Cen. of 13-14-1 E. Stone 8x10x16	a Maple	S. 42 1/2° E	39 Links
	Do	N. 42 1/2° E	30 "
C. Stone 6x12x17	a Beech	N. 39° E	27 "
	Do	S. 50° E	55 "

For Ezra Cox = Beginning at the centre S. NW 1/4 of Sec 13. Thence South 60 Rods 10 Links. See witness on previous page; Thence West 80 Rods to the Section Line; Thence West with section Bearing = 60 Rods to the West bank of Clark's Creek = witness = an Elm 24 N 47 1/2° W = 104 L  
 + Buckeye - 35 1/2° W - 45 L  
 Thence N 25° E 18 Rods to Centre of Dump on the old gravel road; a stone 8x10 witness Sugar 24 inch N 19 1/2° E - 94 L  
 and Elm 333 W 63 L  
 Thence N 46° W with said Road = 33 Rods; a stone 10x12 in west edge of gravel; a witness stone N 27 1/2° E - 24 1/2 L  
 Thence N 27° W 24 Rods 4 Links, a small stone 10x12 witness stone S 67° E - 43 L =  
 Thence East with section bearing = to Section corner distant 87 Rods; Thence East with section bearing 80 Rods to beginning -



Section 14, T14 North, Range N. 1 East.

Owners names, etc. Witnesses Dr. Bearings, links



Mill Section 14  
 It being 82 2/3 acres of  
 Commencing at the  
 Section. Thence <sup>East</sup> West with  
 South with Sec. bearing  
 Rounding where  
 Thence East with Sec.  
 of the creek where is  
 Thence North with Sec.  
 with Sec. bearing 9.86 lin  
 the center of the S. line  
 of the N. E 1/4  
 Thence N. 5. W. 2. 97 1/2 lin  
 61. 12 links to the West  
 of the 1/2 mile Post  
 a Rock 10 x 12  
 Book C. p. 129

Owners names, etc. Witnesses Dr. Bearings, links  
 S.W. Corner of Sec. 14  
 Center on S. of S. 1/4  
 a Beech 28 S. 10 1/2 W 27 1/2  
 + a Ditto 32 S. 68 E 54 1/2  
 a Mulberry 14 N. 68 1/2 W 52 3  
 Book C. p. 11

Commencing at the  
 of Sec. 14. Thence =  
 a stone  
 South 13.52 lin. a cor.  
 Thence West with  
 side of the Section  
 a corner  
 Center of the N. side of the N. E 1/4  
 a Sugar 18 N. 5 W 25  
 + a Ditto 10 S. 20 E 32  
 Sec. bearing 61. 12 links to the West  
 a Beech 15 S. 46 W 25  
 at the top

Moffitt & Hadley  
 1/2 mile Post of Sec.  
 Relocated a Stone  
 8 1/4 Rods E. 7 1/4 mile  
 -ted by some former  
 Surveyor  
 a Survey for in Section 14  
 a Sycamore 18 S. 5 1/2 E 128  
 + a Cottonwood 18 N. 40 E 6  
 + a Sycamore 10 N. 33 1/2 W 60  
 Post + 11 links East of a Stone loca  
 a Sycamore 12 N. 80 E 87  
 see next page

Owners names, etc. Witnesses Dr. Bearings, links

Section 14.  
 1 3/4 Rods South of  
 same a Stone  
 20 Rods West of Center of  
 N. E 1/4 a Stone  
 1 3/4 Rods S. of same  
 a Stone  
 80 2/3 Rods S. on same  
 Center of the Section a Stone  
 a Beech 30 S. 65 W 62  
 a Sugar 18 N. 23 1/2 W 75  
 + a Ditto 18 N. 78 E 137  
 a B. Walnut 36 S. 20 E 108 1/2  
 + a Blue Ash 14 S. 79 W 14  
 a Sugar 10 S. 83 W 85 1/2  
 + a Sycamore 30 N. 87 W 77  
 a Sycamore 10 N. 66 1/2 W 114  
 Section. a Survey for. Sec. 14  
 Center S. S. E 1/4  
 a Black Walnut 5 N. 9 E 4 3  
 + a Ditto 14 S. 44 W 70  
 a Sugar 6 S. 66 W 61  
 + a Ditto 12 West 139  
 a Sugar 16 N. 10 W 26 1/2  
 + a Ditto 20 S. 27 1/2 E 69 1/2  
 Book C. p. 196

Drawlin & Cox continued  
 Begin, at the N.W. cor. of S 1/2 of N. E 1/4 Sec. 23 T. 14 R. 1 E Thence  
 N 10 2/3 ch, Thence W. 7 1/2 ch. a cor East of a Rock 12 3/4  
 a Rock 6 x 8 x 8 N. 56 E } with side of road  
 a Hat, Rock 15 1/2 S. 56 W }  
 Thence S 18 1/2 W to Sec. Line Thence S 13 1/2 E 1/2 ch. a Rock planted  
 16 1/2 sand Stone in Elm 2 1/2 S 80 W 61 3/4

Owners names, etc. Witnesses Dr. Bearings, links

Drawlin & Cox cont.  
 Begin, at N.W. cor. of S 1/2 of N. E 1/4 Sec. 23 T. 14 R. 1 E Thence S 11 1/2 ch.  
 a cor to a Rock 12, 6 1/2, a Sugar 15 S 69 E 80  
 an oak 10 S 65 E 117 1/2  
 S.E. cor of Sec Relocated a Rock 8. 2. Typing (See) 23  
 a Oak 10 N 2 W 26

N.W. cor. of Sec. Relocated from old witness (grove)  
 a Sugar tree 8 inch (not marked) S 72 1/2 E 82 1/2  
 a Stone 4 x 6 x 12

87 Rods W. from N.E. cor. of Sec. for Ezra Cox & John Morgan  
 to center of gravel road

Thence South 27 E East

N.E. cor. of Sec. Relocated by old government trees  
 + a small Elm 10 N 9 E 10 62

60 R. + 10 L. S. of cen. N. of N. E 1/4 of sec. a stone 10 x 18 x 28. +  
 three cornered. W. T. Sugar 15 N 85 W 39 L  
 + Sugar 20 N 57 E 57 L

1/2 mile S.E. from gov. trees. a stone, with by S. Oak  
 30 1/2 dia. S. 22 1/2 E 10. 40 1/2 links

13.52 ch. S. of N.W. cor. of sec. 14. a stone 2 x 6 x 18 + pointed  
 with by S. Oak 15 N 42 E 56 3/4  
 (via, not turned off) + a Beech 20 S 88 E 67  
 July 22 1887

Sec 14 T14 R12

96 l N W 1/2 mi stone in a cor marked  
by a stone 12x16 wit oak 18 36 l  
76 l N cen S N 1/4 a stone 16x12x6  
wit brch 30 N 898 72 l

Book C. P. 410

1:76 C N W 1/2 cor a stone 10x20  
wit stone N 3.20 C

" S 4.80 C

8.96 C N W 1/2 mi cor a stone

18.02 C N Cen S N 1/4 a stone 16x10x7

wit stone 19x12x10 N 25 l

South from E 1/2 mile stone 21.02 ch. to a corner  
(no stone) which cor. is 117 links south of  
centre E. SE 1/4 (no stone found); ~~Thence South~~  
~~6.15 ch. and established corner (no stone set);~~  
Thence South <sup>13.48</sup> 12.05 chains and estab. a corner <sup>iron pin set</sup>  
which is <sup>39.50</sup> 37.22 ch. South of E 1/2 mile stone  
and <sup>75</sup> 103 links north of SE cor sec. 14. (where  
no stone was found)

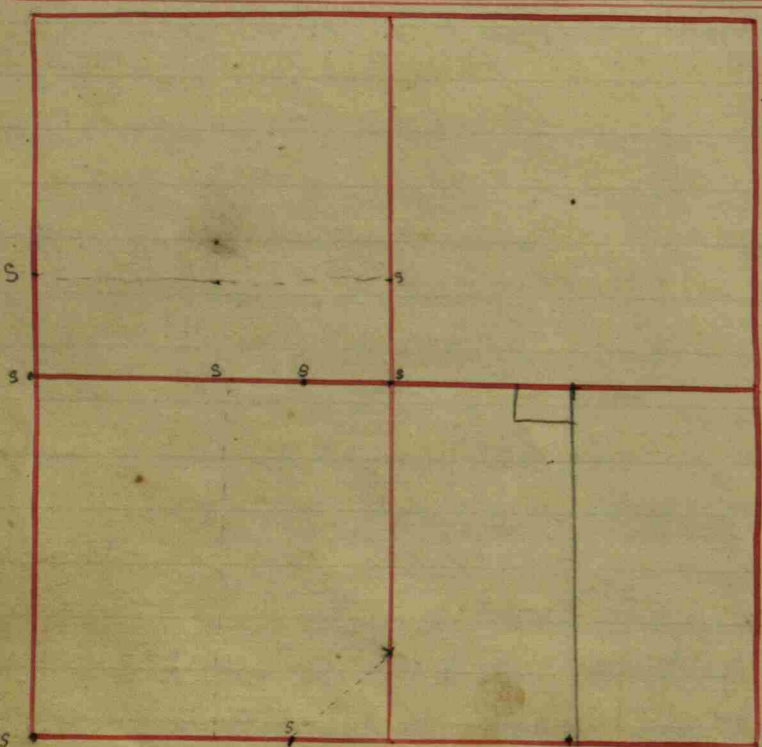
E 1/2 mile stone { Elm 55°E 71 feet 72.52'  
NW cor house 510°E 67.3 ft.  
Power pole 750°W 69 ft.

Stanley Shurtle, Dep S. No. Aug 1944.

Above corners amended at request of  
property owners.

Marion Hadley et al a survey for.  
A pt. of N. 1/4 <sup>Aug</sup> a pt. of the N. E. 1/4 of Sec. 14  
Beginning at N. W. Cor. of said sec. Thence S.  
592 1/2 feet to a stone 5x11x16,  
Thence 2900 feet to a stone 6x7x20  
Thence North 592 1/2 feet to a stone 3x10x20  
Thence West to the beginning = 34 1/4 a.  
Also commencing at a stake 197 1/2 feet  
N. of the S. E. cor. of the above described lot  
and running East 1300 feet to a stake  
Thence N. 197 1/2 feet Thence West 1300 feet  
Thence S. 197 1/2 feet to the place of begin-  
ning = 5 87/100 a.

Section 15 T14 North Range No. 1 East. Owners names & Co. Witnesses Dr. Bearings links



The S.W. Sec. Corner and West 1/4 mile Post have each a good Stone; Book C. p. 11

Samuel Brown a Survey for in Sec. 15 Beginning on the S. end at the center of the E 1/2 Thence N. 53.40 W. to the W. Pole, by calculation: a Sycamore 12 N. 6 3/4 W 74 & a Ditto 12 N. 3 1/2 E 81 Thence North with said 13 2/100 Poles to a line cutting off 30 acres on the N. end of 120 Poles to the E. boundary with said line 120 Poles to the S. boundary with said line 120 Poles 51 acres more or less; line 116 2/100 Poles from the S.W. corner of said Section, Book C. p. 118

Owners names & Co. Witnesses	Dr. Bearings	links
Center on N. of S.E. 1/4 of Section 15	a Beech	24 S. 55 E 8
Center on S. side of S.E. 1/4	& a Ditto	in S. 15 1/2 W 33
	a W. Oak	12 N. 11 3/4 W 53
	& a Beech	30 S. 50 1/2 E 21
		Book C. p. 11
Center on the north a Rock	of the E 1/2 of the S.W. 1/4 of Sec. 15	a Cherry 10 S. 84 1/2 E 12 1/2
Thence South with the Sec. Bearing to Sec. line	& a Buckeye	5 N. 59 1/2 W 15
a Stone	a Sycamore	18 N. 40 E 6
	& a Ditto	16 S. 17 1/2 W 4 1/2

balances at the to

Center of the Sec. 15 a Beech 17 N. 10 E 60 & a W. Elm 30 N. 48 W 119 Thence North with Sec. bearing 19.75 <sup>link</sup> a Rock & a Ditto 18 S. 25 W 39 Thence West with Sec. bearing 40.50 link a Rock 10 & 14 & a Buckeye 6 N. 48 E 4 Thence S. 5 E to the center of the Sec. line on the West side; Being 80 acres off the side of the N.W. 1/4 Book C. p. 129

John Hussey Partition: Part of 7 1/2 & Part of 1 1/2 of E 1/2 of S.W. 1/4 of Sec. 15 as follows: Commencing at Center S. of said E 1/2: Thence West on Sec. line to the S.W. corner of said Section: Thence North on Sec. line 106 2/3 poles: Thence 40 acres S. 53.46 E to the Beginning: Containing Book C. p. 170

Center W. of Center a Beech 321 N. 55 E 9 Sec. 15 & a Ditto in S. 15 1/2 W 33 W 1/4 mile Stone a Beech 16 South 94 & a W. Oak 30 N. 17 W 187 Book C. p. 250

R. L. Ferringlake A survey for 5 Acres in the N.W. cor. of the E 1/2 E 1/2 S.W. cor. of 15-14-18. Beginning at the S.W. cor. Thence South 8.75 ch. to a Stone 6x12x15 Elm 12 N. 11 W. 30 1/2 ch. Sugar 30 S. 44 3/4 E. 33 1/2 ch. Thence East 5.71 1/2 ch. to a Stone 5x8x20 Stone West 25 L. Thence North 8.75 chains to a Stone 9x15 Beech 36 N. 64 1/2 E 105 2/3 L. Do 24 S. 55 E. 79 L. Thence West 5.71 1/2 ch. to the place of beginning. J. W. Trotter. S. H. C.

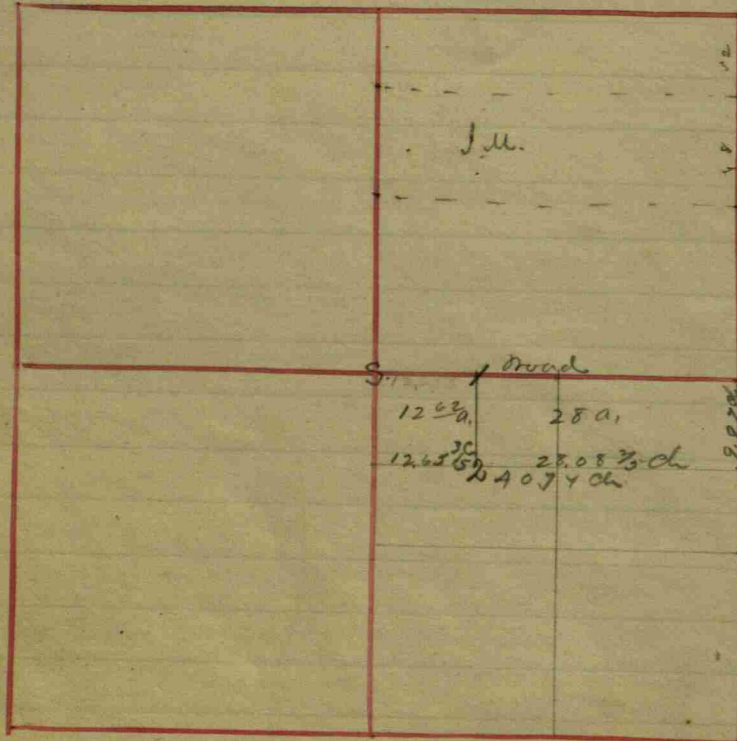
Brown Estate, Survey for N. 1/2 and W. 1/2 of E. 1/2 of S.W. 1/4 of Sec. 15

S. W. cor. of Sec. Stone on top Stone Pin Oak 26 S. 69 E. 102 Links, Cor. N. of E. 1/2 of Beech 30 N. 73 W. 66 " S.W. 1/4 a Stone 10x12 Poplar 15 S. 43 1/2 W. 49 " Cor. S. of E. 1/2 of Sycamore 30 N. 14 1/2 E. 48 " S.W. 1/4 cor. in creek Do 24 N. 54 E. 10 1/2 "

5.23 3/4 ch. N. of Cen. N. of E. 1/2 S.W. 1/4 is W. Cherry 14 S. 79 E. 121 " a Stone 6x12x12 B. Walnut 18 N. 82 W. 167 "

Thence S. 35.88 ch. to Elm 18 S. 73 E. 124 1/2 " a stake in mid. of Cr. Sycamore 20 North. 233 " 13.97 ch. S. of W. 1/2 W. post of 15 - a stone 5x8x10 Sycamore 5 N. 73 W. 24 " Thence S. 18.65 ch. or 7.71 ch. N. of S. W. Sec. cor. a Stone 5x10x12 Thence East 24.52 to a stake on bank of creek a Stake Syc. 40 S. 31 W. 48 " Elm 15 N. 35 W. 12 " J. W. Trotter Surv.

Section 16 T14 North Range No. 1 East. Owners names & Co. Witness Dr. Bearings Links



34 <sup>46</sup>/<sub>100</sub> Rods N. of Cen. E. Beech 20 N. 37 1/2 E. 45 feet  
 N. E 1/4 Stone 10x12x16 DO 15 S. 50 1/2 E 50 "  
 Hence West 164 R. to N. side of the 1/4 Sec.  
 Stone 6x12x15 Poplar 12 S. 29 1/4 E. 5 1/8 "  
 DO 10 N. 5 1/2 E. 26 "

J. M. Trotter, Surveyor.

Survey for E. J. Hicks and John Damm  
 Feb 25<sup>th</sup> 1903

Geo P. Damm and  
 Geo Hicks Survey Ch.

(1) Stone 7x9x15 Apple tree 4 S 71 N. 1 35' Ch

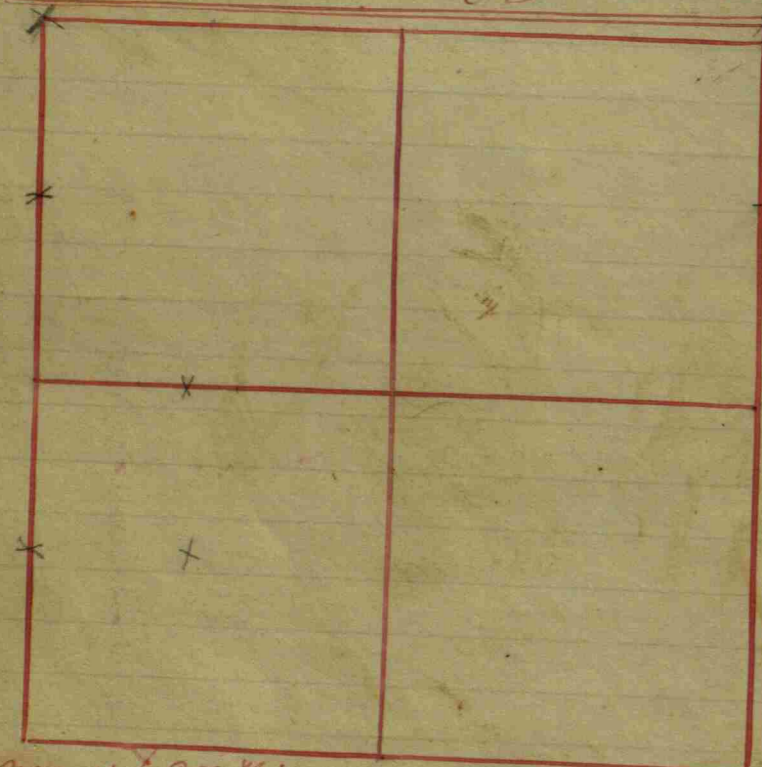
(2) Stone 6x9x11 Beech 2x S 2 E 11 3/4 x 2 L.  
 Stone 8x12x21 S 88 1/2 W 42 L.  
 W. J. Franklin  
 S. H. Co.

Owners names & Co.	Witness	Dr.	Bearings	Links
Center of Section 16	at W. Oak	20	N. 19° 41'	77 1/2
Stone 16+24	2 aditto	24	S. 11 1/4 E	111
Corner 40 Rods South of Cen. Center. at Stone 15+20	at Sugar	12	N. 65 1/2 E	32
Corner 40 Rods South of 3/4 mile at Stone 10+16	2 aditto	24	N. 62 1/2 W	116
	at beamon	24	S. 17 1/2 E	91
	2 aditto	20	S. 2 1/4 W	163
			Book C. p. 217	





Section 17 1/4 North, Range No. 1 East. Owners names &c. Cor. Witnesses. Dr. Bearings Links



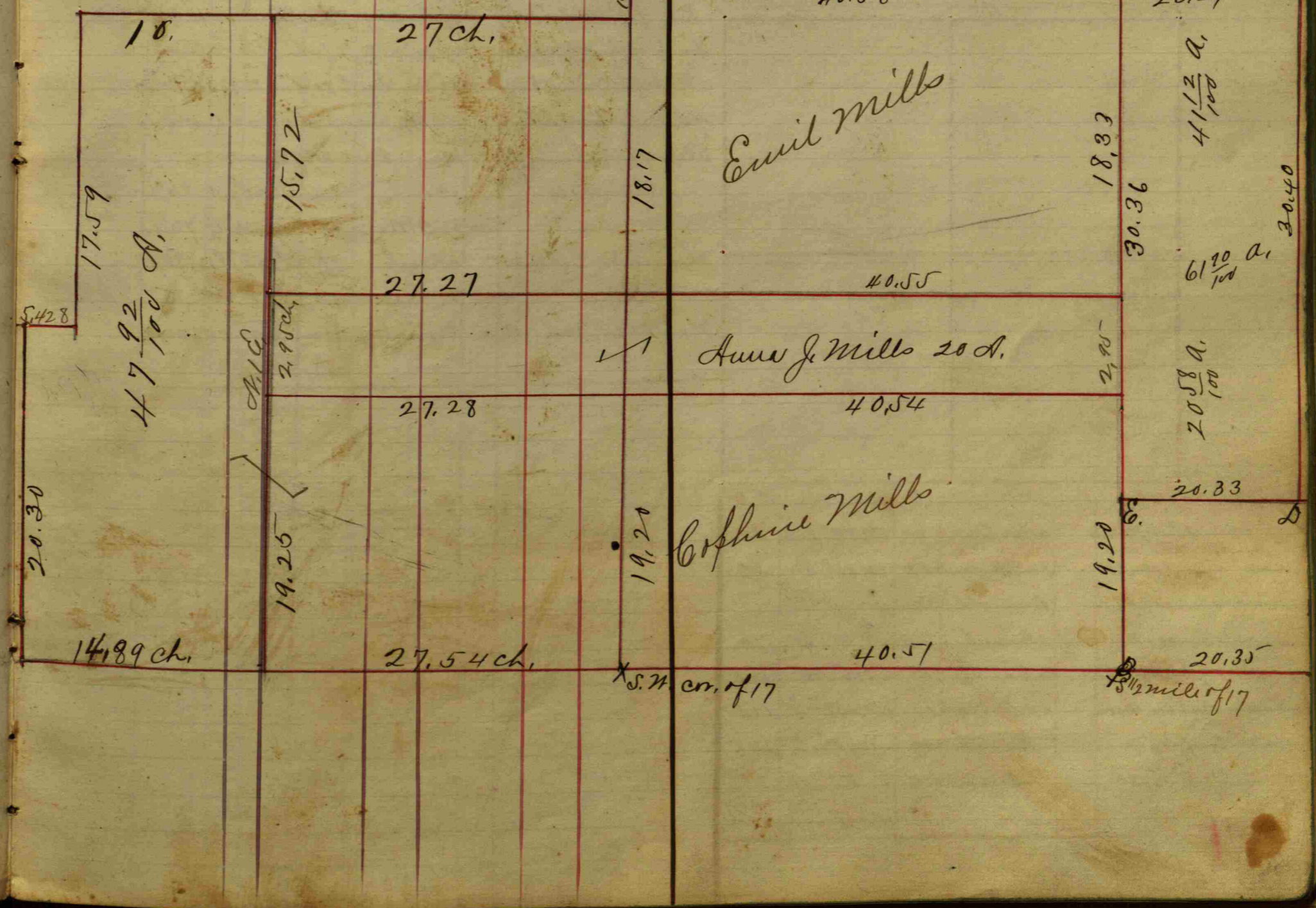
Center on N. of Sect 17  
a good stone  
Jan 11<sup>th</sup> 1887

12 236° 50' E 120  
N 39° 30' E 32 1/2

Owners names &c.	Cor. Witnesses	Dr.	Bearings	Links
50 acres off the west side of the N. 1/4 of the S. 1/4 of Sec. 17	Side of the N. 1/4 of the S. 1/4 of Sec. 17			
Beginning at the	West 1/2 mile Post:			
Thence East 60 Poles	a S. Ash	15	S. 41° E	18
Thence South across the 1/4	a n Elm	8	S. 50° W	21
Thence West to Center West of the 1/4	a Beech	20	N. 75° W	23 1/2
	a Ditto	24	N. 20° E	36
	a P. Oak	28	S. 37 1/2° E	19
			Book C. p. 55	



Owners names &c. Cor. Witnesses. Dr. Bearings Links



10 Poles  
1/2 mile of 17

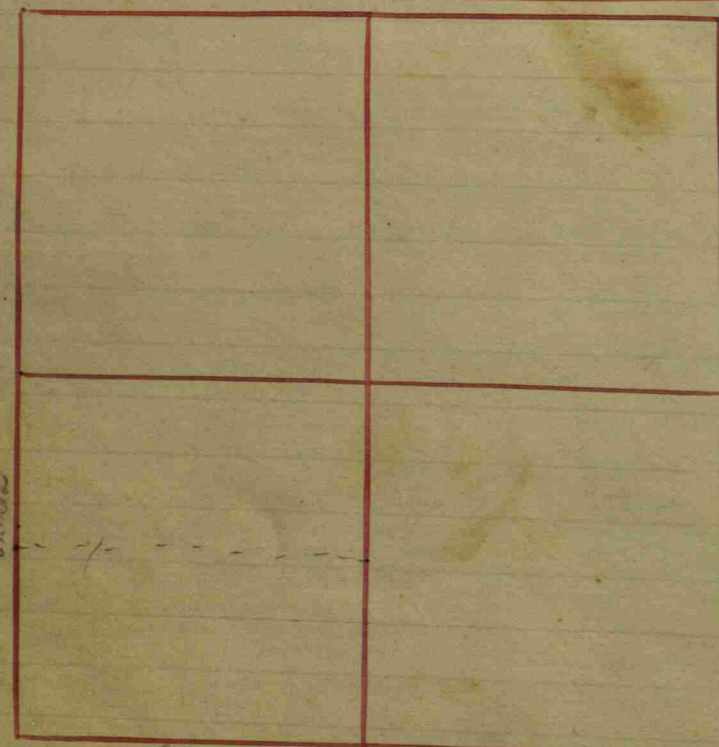
1/2 mile of 17

S.W. cor. of 17

1 1/2 mile of 17



Section 19 T14 North Range N. 1 East.



Owner's name & sex	Witnesses	Dr.	Bearings	Links
40 Rods North at B	a Beech	30	N. 57 1/2 W	83
	+ a Walnut	10	N. 18 E	7 1/2
N.W. corner	a Beech	12	N. 8 1/2 W	22
	+ a Ditto	10	S. 37 E	21
The fence	along all	Book C. p.		5

N.W. corner of of Sec 19	West side of N. pole			
a Stone 15 + 10 on the	a Stone 15 + 24			
	a Beech	12	N. 66 1/2 W	7 1/2
	+ a Hickory	22	S. 34 E	20

Center E. of N 1/4 a Stone	a B. Oak	16	N. 70 3/4 W	63
N.E. corner of Salun = 15 of West side a Stone 124	Meeting House lot 70. Pole East			
	a Beech	20	N. 53 E	41
	+ a Ash	30	N. 53 1/2 W	53

S.E. corner a Stone = 18	a Cherry	14	S. 44 E	19
a Stone 16 +	+ a Sugar	20	West	59
S.W. corner	a W. Oak	18	N. 74 1/2 W	26
a Stone 18 + 20	+ a Beech	28	N. 12 1/2 E	29
N. West corner	a Beech	20	S. 22 1/2 W	55 1/2
a Stone 15 + 18	+ a Ditto	18	N. 84 E	17 1/2
	Book C. p.			23

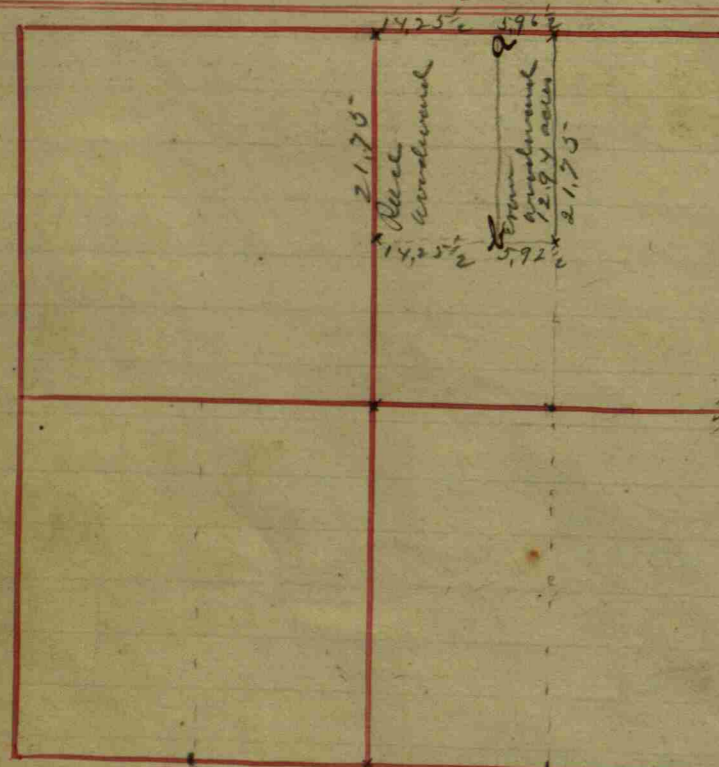
Owner's name & sex	Witnesses	Dr.	Bearings	Links
1/4 mile Post on East side	of Section 19 on Meridian			
Relocated	a Beech	18	S. 5 E	41
	+ a Sugar	10	S. 89 1/4 E	100
Also E side of Sec. 18	a Beech	5	N. 26 E	45
on Meridian	+ a Lym	19	S. 85 3/4 E	81

Jeremiah Hadley	20 acres off the	S. West corner		
The S.E. corner	a Beech	30	S. 26 3/4 E	44
(not plain, this one)	+ a Ditto	12	S. 19 1/2 W	54

ballance at the top.

Owner's name & sex	Witnesses	Dr.	Bearings	Links
Centre E	S. E. 1/4 a Stone 15 x 12 -			
	Witness Stone South on line -			26 1/2
Centre W	S W 1/4 a Sugar 16	3 1/2 W		28
Eighty Rods E of the Meridian line				
on the South line of the Sec.	a Stone 10 x 12 in Centre Road -			
	Witness Stone 8 x 10 -	15 1/2 W		22

Section 20 T14 North Range No. 1 East



Owners names	Cor. Witnesses	Dr. Bearings	Links
E 1/4 mile of Section 20			
a Stone 8+14	Relocated by Running & measuring		
Center East of =	a W. Oak 26	S. 26 1/2° W	37 1/2
= Center a Stone 10+16	+ a Ditto 40	S. 61 3/4° E	122
Center South of S.E. 1/4	a W. Oak 40	S. 22° W	24
a Stone 8+15	+ an Elm 14	S. 48 1/2° E	65 1/2
Commencing at the Center of S.E. 1/4; Thence North 100 and	a Sugar 18	N. 53° W	106 1/2
thirteen Rods where is	+ a Ditto 18	S. 46 1/2° W	58
a Stone 10+15	a pin Oak 40	S. 66 1/2° W	55
Thence East 40 Rods where is	+ a Buck 16	N. 78 1/2° W	65
a Stone 8+10	a Stone 6+10	S. 34° E	37
Thence South 113 Rods to line	+ a Ditto 12+16	N. 29° E	34
of Sec. a Stone 10+20	a W. Oak 18	S. 55° W	125
Thence West 40 Rods to	+ a Maple 12	S. 74° E	123
28 1/4 acres in	the Beginning; containing		Book C. p. 205
N 1/2 Mile a cherry		S 36 E	145 1/2
Center N of the N.E. 1/4	a white oak 36	S 31 W	105
76 R + 9 Links S of center	a buck 8	S 76 W	7 1/2
center of Section an ash		S 59 E	75
Thence N 74 R + 14 L on road		N 9 E	98 1/2
	a Walnut 4	S 10 E	26

Owners names	Cor. Witnesses	Dr. Bearings	Links
a. Boulder	15 inches		
b. Triangular rock			

Owners names	Cor. Witnesses	Dr. Bearings	Links
W 1/2 mi a B Walnut		N 3 W	128
49 links E of the S.E. 1/4 mi a Buck	24	N 56 E	20
19 R + 8 L E of 3/4 mi a Hackberry	8	N 31 E	52
Center S SW 1/4	a Buck 8	N 9 E	69 1/2
Beginning 40 Rods East of the center on the South of the S.E. 1/4; Thence East 41.2 Rods to Section line & the S.E. cor of Section; Thence North 49 Rods to the South side of the road; Thence North 52 Rods & 19 Links to E 1/2 mile stone; Thence West 80 Rods & 25 Links to stone center on the North of the S.E. 1/4; Thence South 24 Rods; Thence East 12 Rods (for lumber) 1 stroke; a Sugar 20 rods, S 25° W, 4 1/2 L; Thence North 24 Rods a Poplar, 12 S 50° W, 12 1/2 L; Thence West 12 Rods cutting off 288 Rods of lumber for Mrs Woodward -			

Survey for Love et al at N.E. S.E. 1/4  
 Clarified Stanley  
 Thos J Rushton Surveyor Champaign  
 Corner 98 1/2 lbs North of center S.E. 1/4  
 Stone 68 x 12  
 Stone S 10 W 13 lbs  
 Corner 98 1/2 lbs North of center S.E. 1/4  
 Stone 8 x 10 x 16  
 Stone S 50 W 12 lbs



Section 22 T14 North, Range N. 1 East.

Owners names & c. Witnesses Dr. Bearings Links

Center S. of S.E. 1/4  
a Stone 24+15  
N. 1/2 mile Post a Stone  
at W. Elm 38 S. 44° E 5 1/2  
+ at Hickory 14 N. 11° W 3 1/2  
14+10: Book C. p. 52

William Hussey Part  
Beginning at Center of  
81 Rods to N.E. corner.  
Thence South to S. line of  
line 64 Rods to Beginning  
has been heretofore set  
Hussey (S.E.) and 20  
E 1/2 of S.E. 1/4 of said  
Commencing at E 1/2  
South on Sec. line  
72 Rods: a Stone 12+16  
Thence N. W. to W. line  
of said 1/4: Thence North  
to the Beginning: Con-  
and also Lot No. 8 in  
No. 16 in the Town of

John Hussey  
of the N. 1/2 of the N. W. 1/4  
Beginning at the  
Thence East on Sec. line  
see next page for balance

Owners names & c.	Cor.	Witnesses	Dr.	Bearings	Links
M. Cracker & Miffitt		at Hickory for in Section 22			
Center S. of S. 1/4		a Beech 22	S.	2° E	43
a Stone: long one		an Elm 18	S.	11° E	5 1/2
Center N. of S. 1/4		a Beech 18	N.	81° W	16
a Stone		a Stone -	S.	62° E	30
		Book C. p. 10			
Center of Section 22		at Hickory 20	N.	27° E	12 1/2
Center N. of S.E. 1/4		an Ash 10	S.	67 1/2° W	41
a Stone 18+10		an Ash 18	N.	21 1/4 or 2 1/4 E	33
		a B. Oak 18	S.	48° W	53
		balances at the top			

Owners names & c. Witnesses Dr. Bearings Links

On line dividing  
20 Rods where is  
a Stone 8+12  
Thence West to Sec.  
line a Stone 10+16  
Thence North on Sec  
line to the Beginning: containing  
60 acres

Lydia Hussey  
Except 20 Rods  
which is set off to  
The N. 1/2 of the N. W. 1/4 of Sec. 22  
in width across the North side  
Containing 60 acres

Judiah C. Hussey  
except 20 acres off  
Containing 60 acres  
The E 1/2 of the S.E. 1/4 of Section 22  
of the North end. set off to Blank  
(The foregoing all Book C. p. 169+170)

194 Rods of center an ash 15 S 60° E 64  
204 Rods S half mile post a Stone 10x12  
a Hickory 10 N 43 1/4° E 15 1/2

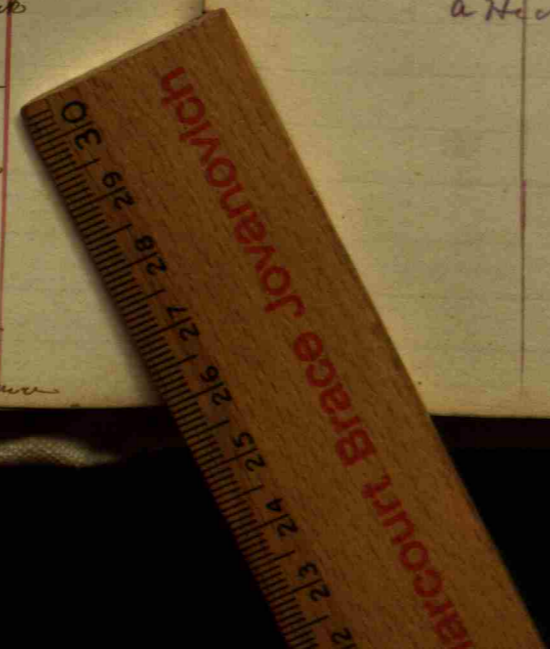
Owners names & c. Witnesses Dr. Bearings Links

Cor. of 22, 23, 26 and 27 established by  
Robt. Mc Pheters Surv. of Morgan, and  
J. W. Trotter Surv. of Hendricks Counties

Chairmen - Clark Blair Hendricks Co. Com.  
John F. Hadley Morgan " "

Flagman Jos. E. Covton Jr. Brown Tp. Morg. Co.  
Cor. of above sections Stone North 20 Links  
a Stone 7x7x14 Hickory 6 S. 67° 32 "

5 1/2 mile stone believed to be accidentally destroyed by  
road grader 27 Sept. 1944. Stanley Shurtle



Section 23 T14 North Range, Vol East, Owners names, Cor. Witnesses Dr. Bearings links



Judiah Hussey  
Beginning 52 Rods North  
at Stone 12+16  
and under Cor. of Bar-n  
Thence East 24 Rods  
Sec. line: at Stone 8+12  
Thence South on Section  
line 17 Rods to the Beginning:

Part of the W 1/2 of S 1/4 of Sec. 23  
(on Sec. line) of S 1/4 cor. of W 1/2  
a Beech S 80 1/2 E 133  
at Stone S 75 W 50  
11 links: Thence N 49 1/2 W to  
a B. Oak 18 N 41 W 26  
a Walnut 16 S 51 W 11

Rebecca Hussey  
Beginning at Center S. of  
said S 1/4; at Stone 12+18  
Thence West on Sec. line  
52 Rods; Thence East 24  
Rods; Thence North on Sec. line  
to the Beginning; And  
T 1/4 R East in Morgan County  
whole 96 acres: More  
23<sup>rd</sup> 1859. Book C P 170

Part of W 1/2 of S 1/4 of Sec. 23  
a Buckeye 16 East on Sec. line 14  
a Sugar 20 N 31 1/2 E 22  
81 Rods; Thence North on Sec. line  
Rods; Thence East 24  
Rods; Thence North on Sec. line  
to the Beginning; And  
the W 1/2 of the N 1/4 of Sec. 26  
Indiana: Containing in this  
23<sup>rd</sup> 1859. Book C P 170

Owners names, Cor. Witnesses Dr. Bearings links

Center South of  
Witnesses  
Thence North to a  
at Stone 26+8: E 1/2  
Corner formerly set by me  
mile at Stone 28+12  
Book C P 52

N. W 1/4 of Section 23 in the  
at Stone 18+12 West with Sec.  
a soft maple 36 N 46 W  
a Do. 15+12 North on line 150

Moffitts Survey, Beginning at 1/2 mile Stone: Thence South,  
32 Rods to Center of Creek. Thence S 5 W with center of creek 40 Rods  
Thence S, 25 W, 24 Rods; Thence West with main shut line 13,4 Rods; Thence West  
33 Rods to center of creek; Thence N 24 S, 8 Rods; N 56 E 16 Rods; S 70 E 11 Rods  
S 22 E, 10 Rods to intersection of line, by Needle.

at Stone 10x2x15  
an ash 15 N 21 1/2 W 21 1/2  
Beginning of creek, 23 1/2 Rods, W of 1/2 mile Stone; Thence North 34 Rods  
Thence N 28 1/2 E, 20 Rods; Thence North 55 1/2 W 13 3/4 Rods; Thence E, 23 1/2 Rods  
to sec line to W  
S 1/2 mile relocated by N. A. Franklin Surveyor. Co. 3  
He & Johnson Surveyor of Morgan County.  
Stone 4 x 5 x 15  
July, 14th - 1899 -  
a Sycamore 14 S 60 1/2 E 65  
" 10 S 51 W 25

Owners names, Cor. Witnesses Dr. Bearings links

q B Walnut 16 S 53 1/2 E 166  
b a Sycamore 20 N 69 W 261  
m an ash 15 S 49 1/2 E 44  
a mulberry 8 S 86 1/2 E 55  
g a Sycamore 15 S 81 1/2 E 155  
r a Buckeye 10 N 89 E 100  
t a Sycamore 20 S 71 E by needle. 248  
o a soft maple 36 N 48 W 150  
g a B. Walnut 16 S 53 1/2 E 166  
b a Sycamore 20 N 69 W 261  
m (in creek) a mulberry 8 East 155  
n a Sycamore 15 S 81 1/2 E 155  
r a Buckeye 10 N 89 E 100  
t a Sycamore 20 S 71 E by needle 248  
c a Sycamore 16 N 36 1/2 W 471

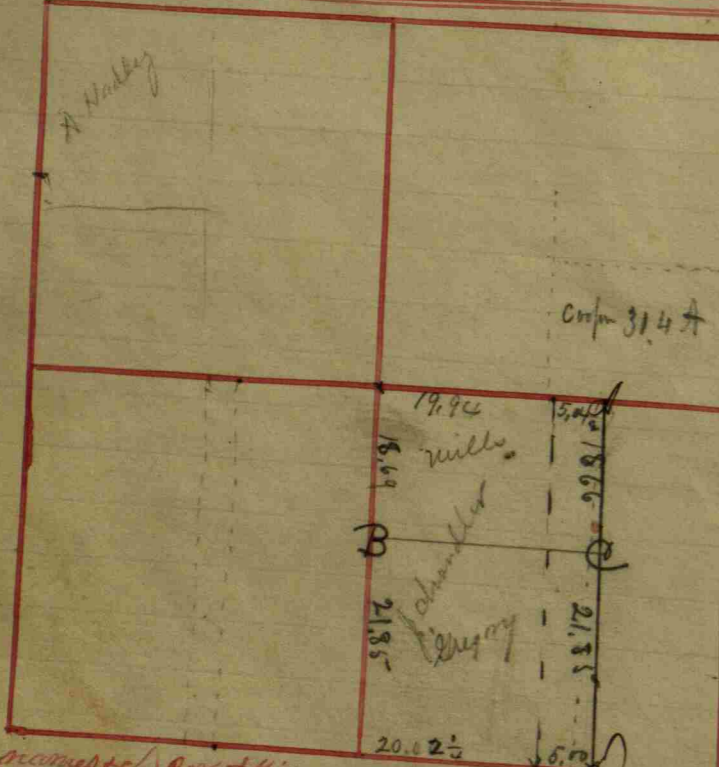
From 1/2 mile South to g 32 Rods. From g to b S 10 W. 1/2 mile.  
40 Rods, from b to c N 25 Rods S. from c to Moffitts cor.  
13,4 Rods. (See other page) From t. to r. S 5 E, 18 3/4 Rods  
From r. to n. S 33. W. 1/2 mile, 20 Rods. from n to m South.  
34 Rods -

1/2 mi cor relocated from old with stump  
Stone 16x12x6  
Thence N 17, 37 1/2 E a stone. S 11, 30 E N sec. stone  
Book C P 389  
berch 20 N 52 1/2 W 32 1/4  
Sugar 16 N 89 1/2 W 30  
a stone. S 11, 30 E N sec. stone

1/2 mile stone believed to be accidentally destroyed  
by road grader on 27<sup>th</sup> Sept 1944 - Stanley Skittle

46.9	45	85
17.2	26	120
15.07	36	
2.55 1/2	44	10.25
		16.66
		10.35
		5.31
		4.95
66	4038	61.2 ch
396		
78		61.2 ch
66		59.0 ch
120		
225		
56.25		2.2
61.2 ch		
56.25		
4.95		

Section 24 T14 North Range N.1 East. Owners names & c. witnesses Dr. Bearings Links



A corner 32.50 N. North of S.W. cor. of Sec. 24 T.14 N. R. 18 a stone  
 planted + wit. by a Beech 24° N 46° E 27 1/2  
 + a Stone N 88 1/2° E 16 1/2 L.

Miller and Gargory - a survey for May 10, 1893  
 S. 1/2 Mile relocated B. Walnut 14 S. 33° E 58 1/2 L.  
 Stone 12x12x18 Beech 16 S 5 1/4° E 38 1/2 L.  
 C. of Sec. Relocated from old witnesses  
 Stone 5x16x24

21 85/100 chains North of the S. 1/2 mile  
 B - Stone 4x10x14 Ash 10 S. 52 1/2° W 8 links  
 Stone 36 S. 4 3/4° W 13 "

21 85/100 chains North of D -  
 Stone 6x12x12 Sugar 18 S. 61 1/2° E 9 "

A - Stone 8x12x16 old witnesses -  
 J.W. Trotter

Owners names & c.	Cor.	Witnesses	Cor.	Bearings	Links
Jacob Chandler	SW	100 acres off of the N. side of T. 14 N. R. 18	SW		
North - corner	SW	20 acres off of the N. side of E. 1/2 of said T. 14	SW		
South - corner	SW	a Beech	SW	N. 83° W	40
Center of Section	SW	a Ditto	SW	S. 45 1/2° E	7 1/4
	SW	a Hickory	SW	N. 69° E	15
	SW	a Beech	SW	S. 11 1/4° W	59 1/2
	SW	a Beech	SW	S. 60° W	24
	SW	a Ditto	SW	N. 23 3/4° E	32
	SW		SW		Book C.P. 115

Jessup vs Jessup - Land Partition - Nov. Term 1893,  
 John W. Trotter S.H.C., Alex Surringew & Saml Woodward  
 Commissioners.

14.94 chains N. of the Cen. of Sec. 24 is a  
 Stone 8x12x17  
 Wit. Beech 15 S. 26 1/2° W. 13 L.  
 Do. 18 S. 54° W. 32 "  
 Thence North 9.81 1/2 links to a  
 Stone 6x10x14  
 Wit. Sycamore 6 S. 25° E. 19 L.  
 Do 6 S. 13° E. 21 1/2 "

Thence North 10.4 1/3 chains to a stone  
 at the N.W. cor. of lot 4

Thence North 2.60 1/3 chains to a  
 Stone at N.W. cor. Lot 3.

Thence North 2.47 ch. to a  
 Stone at N.W. cor. Lot 2

N. 1/2 Mile Sec. 24  
 Stone 12x19x22  
 Wit. Maple 18 S. 28° W. 83 Links  
 Do 12 S 3° E. 70 "

Survey for Ben Woodward et al  
 Ray C. Hill & Geo McCoub Survey Ch.  
 C. of N. center Stone found which was  
 supposed to be the corner but by running  
 and measurement found to be 6 links  
 to far north. Corner was left standing  
 but was not used in this survey (The  
 above corner is not found on record)

C. of N.W. cor. Stone 16x12x8  
 By Stone N 60 1/4° E 29 1/2 L.  
 " Stone S 19 1/4° W 46 1/2 "

25.12 ch S of C. of N.W. cor. Stone 12x12x5  
 By Stone S 46° E 58 "  
 " " N 43 1/4° W 37 1/2 "  
 " " S 33 1/2° W 50 "

25.14 1/2 ch S of N.W. cor. Sec. Stone 12x6x5  
 By Stone S. 2 1/2° E 36 1/2 "  
 " " North 47 1/2 "  
 W. S. Franklin S.H.C.



Public or County Roads in Town 14 N. R. 1 East

In Hendricks County, State of Indiana:

Bradston Browns Road Witnesses, Dr. Bearings, links  
 Beginning in Sec. 23 of Whitelick Creek, in the at a B. Oak 16 in. 6 m. Thence N. 15. W. 23 poles to Thence N. 3. W. 35 1/2 poles to Thence N. 50. W. 16 1/2 poles Thence N. 6. W. 17 poles Thence N. 20. W. 46 Poles Thence N. 16. W. 56 p. Thence N. 15. W. 100 poles Thence N. 7. W. 45 1/4 poles to Thence N. 6. W. 29 poles Thence N. 25. W. 18 3/4 poles Thence N. 6. W. 29 p. Thence N. 60. W. Thence N. 15. W. 65 poles Thence East on the line 37 1/2 to the other Road, being 1 3/4 miles & 3 poles long, Book C. p. 54

Jonathan Mills Settlement  
 Beginning on the North one N. W. of David Demoss and Thence N. 15. W. 8 p. Thence N. 52. W. 8 p. Thence N. 7. E. 12 p. Thence N. 16. W. 8 poles Thence N. 49 1/2. E. 2 1/4 poles Thence North 43 poles Thence N. 4 1/2. W. 129 poles

Danville & Mooresville Road  
 a Walnut 18 South 26  
 a Hickory 24 N. 85. E 11 1/2  
 a Walnut 26 The Corner  
 a B. Oak 50 N. 59. E 21  
 a Walnut 15 S. 26 1/2. W 56  
 a Walnut 36 S. 7. E 37  
 Blairs line: Thence N. 25. W 28 poles  
 a B. Oak 18 N. 6 1/2. E 57  
 a B. Oak 30 S. 45. E 49  
 a Sugar 20 S. 25. W 28  
 to a Walnut 24 on Lowders line  
 Thence North on the line 1/2 mile 1 3/4 miles & 3 poles long, Book C. p. 54

Road on petition  
 of the Branch in the County Road Sugar Orchard at a Beech 20 in. Diameter and an Elm 24 S. 31 1/2. W 56  
 a Beech 18 South 7  
 a Beech 26 S. 16. E 24  
 a Beech 16 S. 85. W 56  
 a B. Oak 30 N. 87 1/2. E 28  
 a Beech 10 S. 45. E 38  
 Thence at the top

Jonathan Mills Settlement Witnesses, Dr. Bearings, links  
 Thence N. 16. W. 68 poles a Cherry 15 Corner Post  
 Thence N. 29. W. 5 poles a Sycamore 12 S. 22. W 45  
 Thence N. 5 1/2. W 88 poles = + 16 lin a Walnut 18 N. 58 1/2. W 20  
 Thence East with the line 109 poles & 11 links; Thence North on the line 80 poles to the Section Corner; Thence still North on the line 76 poles & 11 lin to the N. W. Spur of an Oak stump Gate Post 14 S. 73. E 21  
 Thence N. 10 1/2. E 194 poles to Davis' Corner  
 Thence North 20 poles a Beech 16 S. 82. W 25  
 Thence N. 37. E. 38 poles a Beech 18 S. 79. E 34  
 Thence N. 7. E. 10 poles; Thence N. 72 1/2. E. 31 poles to an Elm 40. Corner  
 Thence N. 55. E. 11 p. Thence N. 3. E. 29 p. an Elm 24 S. 72. E 25  
 Thence N. 52. W. 33 poles; Thence N. 29 1/2. E 13 poles  
 Thence N. 50. W. 47 poles a Sugar 28 S. 7. W 32  
 Thence N. 25. W. 21 1/4 poles a Sycamore 24 The Corner  
 Thence N. 35. W. 23 poles; Thence N. 8. W. 36 poles; N. 30 1/2. W 13 1/2 poles  
 Thence N. 32. W. 16 poles; Thence N. 45. W 14 poles Thence N. 87. W 6 1/2 poles  
 Thence N. 35. W. 10 poles to the National Road, 4 poles East of the Bridge; Note. 3 or 4 of the last courses & distances taken too late in the evening to sum well; Book C. p. 55

County Road from Mooresville & Danville Road at Mouth  
 North on Sec. line 110 poles to the 1/2 mile post: a Beech the corner  
 Thence North on the line 1/2 mile, to the Township line; Thence West 32 1/2 links; Thence North 1/2 mile; The Road on West of the line; Thence North on line 20 poles into the National Road; Book C. p. 56

Public or County Roads in T. 14 N. R. 1 East, Continuation of County Road

Beginning at a point from which an Apple tree 8 S. 40. E 65  
 Thence N. 9. E. 9 poles & 10 links an Apple tree 8 S. 45. E 18  
 Thence N. 39. E 7 poles & 12 lin where a Beech 32 S. 8. W 32 1/2  
 Thence N. 59 1/2. E. 31 poles a Sycamore 44 S. 44. W 47  
 Thence N. 7 1/2. E. 39 p. 18 lin where a Beech 20 N. 30 1/2. E 32  
 Thence N. 7. W. 30 p. & 11 lin a B. Oak stump 36 N. 49 1/2. W 23  
 Thence N. 84 1/2. E. 43 poles a Hickory 24 N. 71. E 34  
 Thence S. 30. E. 6 poles & 11 lin a B. Oak 20 N. 76. E 68  
 Thence S. 72 1/2. E. 26 poles a Beech 16 N. 79. E 34  
 Thence N. 78 1/2. E. 16 p. 13 1/2 lin a B. Oak 22 N. 33. E 7  
 Thence S. 74. E. 40 poles a Beech 15 N. 32. E 28  
 Thence S. 79 1/2. E. 33 poles a Beech 28 N. 31. E 41  
 Thence S. 64. E. 23 poles & 4 lin a B. Oak 20 S. 4. W 26  
 Thence S. 44. E. 14 poles & 8 lin a B. Oak -- N. 35 1/2. E 64  
 Thence S. 66 1/2. E. 30 poles a Beech 14 N. 35. E 28  
 Thence N. 77 1/2. E. 21 poles; a Beech 25 South 60  
 Thence S. 78. E. 35 p. & 3 lin to the Section line 5 feet South Center E of S 6 1/4 of Sec. 6. S. 14. N. of Range 1 West, where a Beech 20 S. 47. W 52  
 and is 431 poles long; Book C. p. 67

Road Change of Witnesses Dr. Bearings, links  
 Beginning near the corner of Jesse Carters land in the Mooresville  
 1 Plainfield Road, where an Ash 10 S. 57. E 45  
 2 a Poplar 24 N. 77. W 44  
 Thence N. 28 1/2. E. 20 poles Thence N. 21. E 10 poles; Thence N. 2 1/2. W. 8 poles, intersecting the old Road; making in all 38 poles. Old route, measures 37 p. 56. Book C. p. 97 1/2

Road petitioned for by N. R. Brown, in T. 14 N. R. 1 East  
 Commencing in the Danville & Mooresville Road at the junction of the Sugar Grove Road, and running Northwardly with Sugar Grove Road 38 Rods, where a Sycamore 36 N. 27. E. 121  
 Thence West 15 Rods & 5 lin. to where it intersects said Danville & Mooresville Road. an Elm 40 South 22  
Road Joel Newlin Commencing at a point near the County Road leading from the foot of the hill E. of Sugar Grove meeting house to the Road leading from Plainfield to Mooresville, and running north 60. W 34 Poles; Thence N. 9. W 14 Rods Thence N. 35. W. 8 Rods; Thence N. 11. W 62 Rods near N. line of Joel Newlins land a Cherry 16 S. 70. E 53  
 Thence N. 3. W. 79 Rods & 5 lin. a Beech 18 S. 21 1/2. W 79  
 Thence N. 44. E. 29 Rods & 5 lin. a Beech 10 N. 52 1/2. W 84  
 Thence North (23 links N. line) about 68 Rods to corner on South between Sec. 34 & 35. T. 14 N. R. 1 East; Thence North on Sec. line 108 Rods, where it intersects the Road leading from Plainfield to Mooresville Book C. p. 182

Roads in T. 14. North Range N. 1 East.

David Meeker Road on petition Mill to the Gravel Beginning at the Blair, on Section in T. 14. N. R. 1 East to where it intersects	Witness, by Bearings, Links Leading from Harvey's or Woodward's Road South of Plainfield, foot of the hill North of Stone line between the and running N. 10° E 48 Rods the Gravel Road, Book 6, 206
Asahel N. Davis, Commencing where 20. T. 14. N. R. 1 East of line 52 Rods to the Thence West to 66 Intersection of old	Road, petitioned for by, at the East line of the S. E. 1/4 of Sec Thence North on West side S. E. corner of said 1/4, Rods West of center of Section to Route, whose length 276 Rods.
Samuel Fogelman & Survey Begins at Cen Thence runs East 100 Mooreville to Sec	other Road, petitioned for, at Ter S. of S. W. 1/4 of Sec. 16. T. 14. R. 1 E. Rods to the Road leading from gar grove, whose length 100 Rods.
Abner Hadley Commencing 14 Rods of N. W. 1/4 of Sec. 20, of line 38 1/2 Rods: = section of old Road.	Road, Survey on petition for 220 lin. South of center West T. 14. R. 1 E, and runs S. on E side Thence East 47 Rods to inter- section in Book 6, p. 211
Obadiah Morgan Commencing 6 poles N. E. 1/4 of Section 14.	other Road Survey for, at West of the Center N. of the T. 14. N. R. 1 East: Thence East at the top

a continuation of.

on Sec. line 78 Poles, to within 8 poles of the N. E. corner of the  
Section, Thence S. 70° E 11 poles; Thence N. 66° E 14 poles to the  
Section line 15 1/2 poles East of Sec. corner; Thence East on line  
64 3/4 poles to the N. E. cor. of the W. 1/2 of N. W. 1/4 of Sec. 14. T. 14. R. 1 E;  
Book 6, p. 265

$\frac{1.67}{2.2} = 4.7$   
2.82

5310  
219

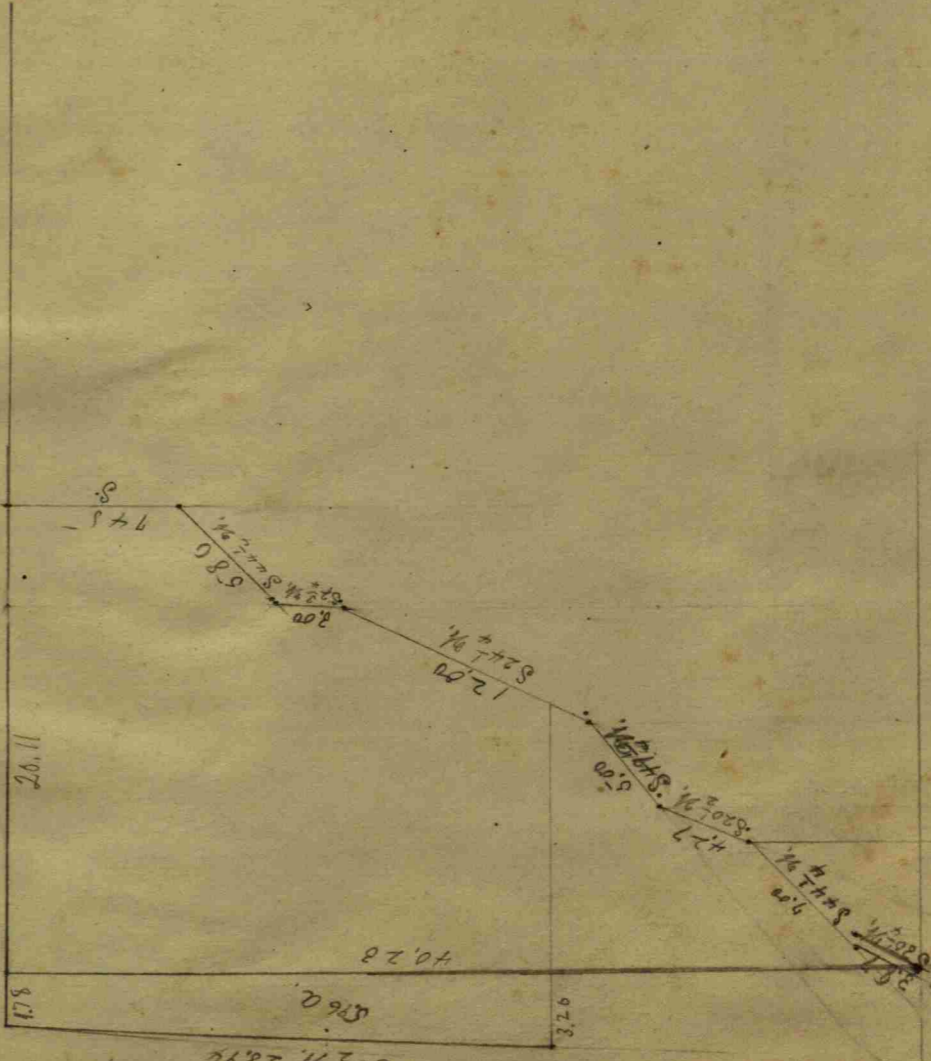
820  
179

3230  
299

1023  
373

872  
174

330  
871



387  
152

1198  
22

135  
146

322  
28

218  
190

240  
146

218  
190

240  
146

272  
156

272  
156

320  
180

360  
216

320  
180

360  
216

400  
240

400  
240

440  
264

480  
288

440  
264

480  
288

520  
312

520  
312

560  
336

600  
360

600  
360

640  
384

680  
408

640  
384

680  
408

720  
432

720  
432

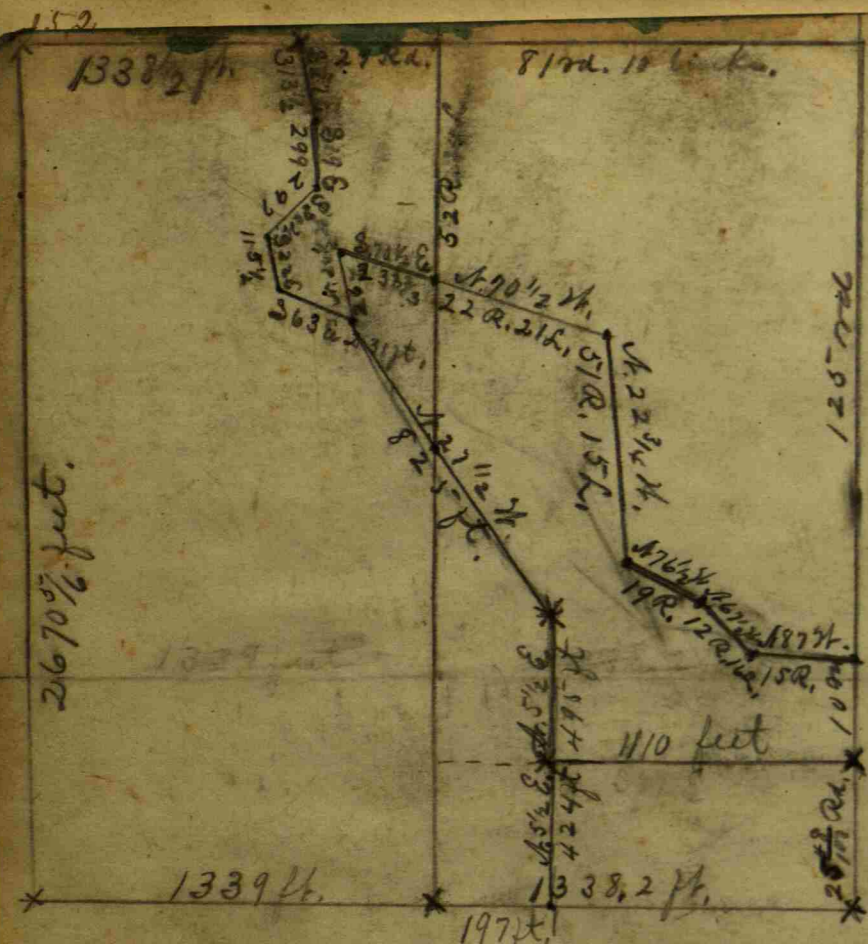
760  
456

800  
480

800  
480

840  
504

880  
528



6 hrs @ 5¢ = 300; 2-1/2<sup>0</sup> 37-25- 3/66  
 14- 4  
 22-21

- Prest. D. H. Davis - 1.50 ✓
- Perry Tully - 1.00 ✓
- Marion Townsend - .50 ✓
- Jesse Townsend - .50 ✓
- Joshua Davis - 1.00 ✓
- Alva Hornaday - 2.00 ✓
- Onas J. Brown - 10.00 ✓
- \$16.50
- Chairman's share - 3.00 ✓
- \$19.50

Mrs. Pearson

56  
 32  
 88 1/2  
 85  
 490  
 704  
 7480

40  
 82  
 48 1/2  
 80 1/2

16  
 30  
 480

81.4  
 3 1/2  
 81.7 1/2

162  
 81  
 81

565  
 86  
 3390  
 4520  
 10) 4859 (485.9)

85) 4800 (56.5  
 425  
 550  
 5100

88 1/2  
 56 1/2  
 32

162.8  
 81  
 81.8  
 80.8

88 1/2  
 56  
 28 1/2

875  
 88.5  
 21760

88  
 752  
 440  
 610  
 44  
 6644 (41.5)

64  
 24  
 16  
 16

162.8  
 26  
 86.8

8732  
 32  
 17460

26196  
 16) 79424 (4965)  
 16  
 119  
 112

74  
 64  
 102  
 90

1050  
 400  
 2150  
 17.55

See 17714 NR 10  
 X 1/2 hr Post stone 16x12x10  
 Pine 16" 36 52 E 120 1/2  
 Stones N 39 24 E 32 1/2  
 center of sec 17  
 Stake taken 20' N 28 E 39 1/2