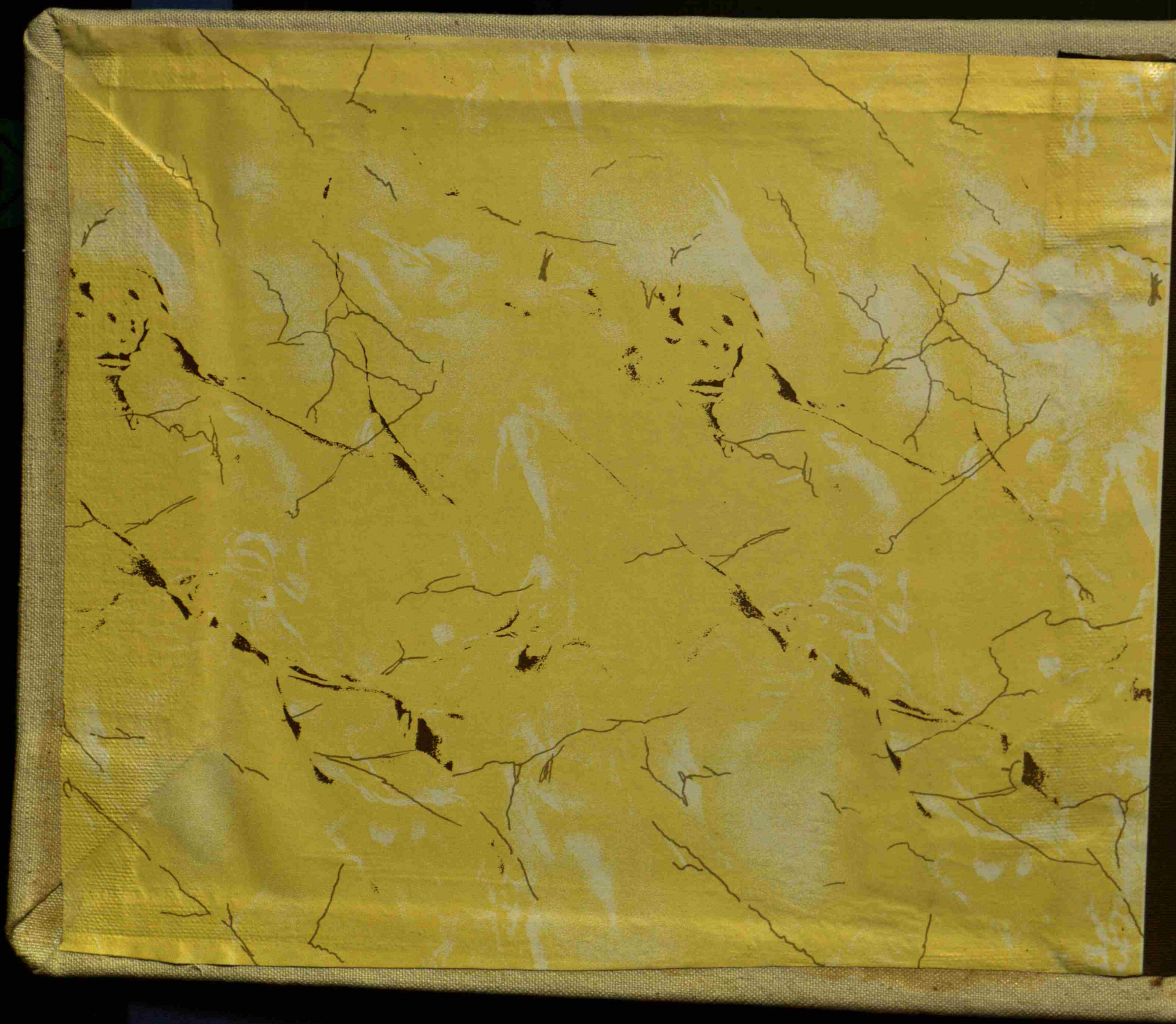


Township No 17 North

Range No 1 East

Growth in Mathematics  Harcourt  
Library AS/N Y. N. Y.





Growth in Mathematics HARCO

Chains

Township No. 17 North, Range No. 1 East, 2<sup>d</sup> Meridian Indiana

Range Line	Variation 6° 18' E.
North	North
Between Ranges 1 & 2 East, Township 17 North	On East side of Section 24
On East side of Section 31, T. 17, R. 1 E.	20.41 a W. Oak 30 in. Diameter
20.00 a Birch 15 links wide Co. East	40.00 qtr. Section corner
20.58 a Hickory 14 in. Diameter	a Birch 30 in. diam. N. 5° W. 2 1/2 in.
20.00 qtr. Section corner	a Do. 15 in. diam. N. 45° E. 1 1/2 in.
a Mountain Sycamore 22 1/2 in. links	66.55 a Hickory 30 in. Diameter
an Oak 14 in. diam. N. 45° E. 1 1/2 in.	50.00 Set corner of Sect. 13 & 24
66.19 a Hickory 12 in. Diameter	an Oak 20 in. diam. N. 10° E. 3 1/2 in.
81.00 Set Post 1/2 in. dia. 2 1/2 x 3 1/2	an Oak 20 in. diam. N. 10° E. 2 1/2 in.
a Birch 12 in. diam. N. 75° E. 2 1/2 in.	
an Oak 20 in. diam. N. 52° W. 1 1/2 in.	
North	North
On East side of Section 25	On East side of Section 13
25.20 a W. Oak 20 in. Diameter	25.20 a Poplar 30 in. Diameter
0.00 qtr. Section corner	110.00 qtr. Section corner
an Oak 15 in. diam. N. 40° W. 1 1/2 in.	a Mountain Sycamore 24 1/2 in. links
an Oak 20 in. diam. N. 56° E. 1 1/2 in.	an Oak 20 in. diam. N. 45° E. 1 1/2 in.
5.77 a W. Oak 24 in. Diameter	80.00 Set Post corner of Sect. 13 & 24
0.00 Set corner of Sections 24 & 25	a Sugar 12 in. diam. N. 10° E. 1 1/2 in.
an Oak 10 in. diam. N. 75° E. 1 1/2 in.	a Birch 15 in. diam. N. 45° E. 1 1/2 in.
a Do. 8 in. diam. N. 67° W. 1 1/2 in.	

Handed over to the State

Handed over to the State

Town Line

East Between Townsh. N. 16.17, North, Range 1 East, On South side of Section 31 On the line of Section.

6.50 a Hick 30 in. Diameter.

10.00 qtr. Section corner.

an Elm 30 in. Dr. head & North 18 links

an Oak 14 in. " " S. 34. E. 31 "

1.50 a Sugar 10 in. Diameter.

83.00 Set Post Cor. of Sect. 31 & 32.

a Sugar 8 in. Dr. head S. 43. W. 6 links

Beech 10 in. " " N. 51. E. 14 "

---

East On South side of Section 32.

4.00 an Oak 20 in. Diameter.

0.00 qtr. Section corner.

a Hick 20 in. Dr. head & N. 1. E. 13 links

a Do. 13 in. " " S. 16. W. 18 "

6.50 a Hick 12 in. Diameter.

1.44 a Creek 5 links wide Co. South

0.00 Set Post corner of Sections 32 & 33.

a Beech 8 in. Dr. head S. 36. W. 3 links

a Sugar 12 in. " " N. 67. E. 53 "

Sand & timber as by per. Survey of Spire

Chains Links

East On South side of Section 33.

16.60 an Elm 20 in. Diameter.

40.00 qtr. Section corner.

a Beech 14 in. Dr. head S. 80. W. 26 links

a Do. 10 in. " " S. 61. E. 3 "

46.75 a Hick 24 in. Diameter.

80.00 Set Post corner of Sect. 33 & 34.

a Beech 20 in. Dr. head N. 47. W. 7 links

a Do. 11 in. " " S. 8. E. 17 "

---

East On the South side of Section 34

2.34 an Oak 3 in. Diameter.

40.00 qtr. Section corner.

a Beech 12 in. Dr. head S. 62. W. 34 links

a Do 14 in. " " S. 30. E. 51 "

46.50 a Beech 12 in. Diameter.

68.50 a Creek 50 links wide Co. South

80.00 Set Post corner of Sect. 34 & 35.

a Beech 10 in. Dr. head N. 17. E. 8 links

an Ironwood 6 in. " " S. 8. E. 14 "

---

East On South side of Section 35

10.10 a Hick 24 in. Diameter.

40.00 qtr. Section corner.

a Hick 24 in. Dr. head S. 75. W. 14 links

a Walnut 20 in. " " N. 73. E. 7 "

Sand & timber as by per. Survey of Spire

Chains Links

42.50 a Beech 12 in. Diameter.

80.00 Set Post corner of Sections 35 & 36.

an Oak 6 in. Dr. head S. 52. W. 5 links

a Do. 8 in. " " S. 21. E. 4 "

---

East On South side of Section 36.

20 an Elm 18 in. Diameter.

40.00 qtr. Section corner.

a Sugar 12 in. Dr. head S. 55. W. 16 links

a Beech 10 in. " " N. 55. E. 14 "

5.00 an Oak 36 in. Diameter.

80.00 Set Post corner of Sections 31 & 36.

an Elm 18 in. Dr. head N. 77. W. 11 links

a Do. 16 in. " " S. 84. E. 17 "

---

Subdivision

North Between Sections 35 & 36.

30.60 a Beech 18 in. Diameter.

0.00 qtr. Section corner.

a Beech 10 in. Dr. head N. 52. W. 7 links

a Poplar 24 in. " " S. 8. E. 14 "

40.00 a Sycamore 24 in. Diameter.

88.00 Set Post corner of Sections 25, 26, 35 & 36.

a Beech 12 in. Dr. head S. 46. W. 16 links

a Do. 10 in. " " N. 17. E. 18 "

Sand & timber as by per. Survey of Spire

Chains Links

East Between sections 25 & 36 On Random

40.00 Temp. qtr. Section Post.

80.00 Intersected East Boundary 80 links South of Post.

---

West Corrected between the same

40.00 qtr. Section corner.

a Sugar 12 in. Dr. head S. 28. E. 28 link

a Do. 10 in. " " N. 28. W. 19 "

80.00 To Section corner.

---

North Between Sections 25 & 26.

19.27 a Beech 14 in. Diameter.

40.00 qtr. Section corner.

a Beech 10 in. Dr. head S. 48. W. 21 links

a Do. 8 in. " " N. 10. E. 14 "

64.00 a Sugar 6 in. Diameter.

80.00 Set Post corner to Sect. 23, 24, 25 & 26.

a Sugar 18 in. Dr. head S. 77. E. 20 links

a Do. 18 in. " " N. 86. W. 20 "

---

East Between Sections 24 & 25 On Random

40.50 Temp. qtr. Section Post.

77.74 Intersected East Boundary 100 links S of Post.

West Corrected between same

39.97 qtr. Section corner.

a Swamp oak 10 in. Dr. head S. 41. E. 5 links

a Do. " 8 in. " " S. 71. W. 11 "

77.00 To Section corner.

80.38 To Section corner.

Sand level 125 Rate

Sand and timber as by per. Survey of Spire

Sand level 125 Rate

North Between Sections 23 & 24.  
 1.74 a W. Oak 30 in. Diameter  
 40.00 qtr. Section corner  
 an Elm 14 in. Dr. bears S. 52° W. 17 links  
 a Spruce 10 in. " N. 24° W. 10 "  
 4.10 a Beech 12 in. Diameter  
 6.00 Set Post for to Secs. 13, 14, 23 & 24.  
 at W. Oak 10 in. Dr. bears N. 75° W. 10 links  
 a Beech 12 in. " " S. 73° E. 10 "  
 May 30<sup>th</sup> 1820.

East Between Sections 13 & 24 On Random.  
 14.00 Temp. qtr. Section Post.  
 79.50 Intersected East Boundary 122 links S. of Post.

West Corrected between the same  
 qtr. Section corner  
 a W. Oak 24 in. Dr. bears S. 17° E. 6 links  
 a Beech 14 in. " " - 78° W. 18 "  
 79.70 To Section corner

North Between Sections 13 & 14.  
 4.80 a Poplar 24 in. Diameter  
 40.00 qtr. Section corner  
 a Beech 12 in. Dr. bears N. 61° W. 14 links  
 a Do. 12 in. " " N. 34° E. 19 "  
 2.75 a Poplar 31 in. Diameter

Chains  
 Links  
 80.00 Set Post for to Secs. 11, 12, 13 & 14.  
 a Beech 10 in. Dr. bears S. 26° W. 25 links  
 a Do. 12 in. " " N. 56° W. 16 "  
 East Between Sections 12 & 13 On Random  
 40.00 Temp. qtr. Section Post.  
 79.51 Intersected East Boundary 100 links S. of Post.

West Corrected between the same  
 qtr. Section corner  
 a Beech 10 in. Dr. bears W. 87° E. 28 links  
 a Swamp Ash 18 in. " " N. 86° W. 14 "  
 79.51 To Section corner

North Between Secs. 34 & 35.  
 14.10 a W. Oak 24 in. Diameter  
 40.00 qtr. Section corner.  
 a Beech 12 in. Dr. bears S. 20° W. 20 links  
 a Do. 14 in. " " N. 35° E. 23 "  
 51.75 a Beech 14 in. Diameter  
 80.00 Set Post for to Secs. 26, 27, 34 & 35.  
 a Beech 8 in. Dr. bears S. 40° E. 20 links  
 a Do. 18 in. " " N. 36° E. 30 "  
 East Between Sections 26 & 35. On Random  
 40.00 Temp. qtr. Section Post.

Land level 2<sup>nd</sup> Rate, Beech  
 Sugar, Poplar, Oak, & Spruce  
 Land level 2<sup>nd</sup> Rate, Beech  
 Oak, Maple & Dogwood &c.  
 Land level 2<sup>nd</sup> Rate, Beech  
 Oak, Walnut, Sugar, Oak, & Spruce  
 Land level 2<sup>nd</sup> Rate  
 Beech, Sugar, Oak  
 Spruce, Maple, Dogwood  
 Land level 2<sup>nd</sup> Rate  
 Beech, Sugar, Oak  
 Spruce, Maple, Dogwood

Chains  
 Links  
 80.30 Intersected N. S. line 10 links South of Post  
 West Corrected between the same. 26 & 35.  
 40.15 qtr. Section corner  
 a W. Oak 28 in. Dr. bears N. 27° W. 16 links  
 a Do. 24 in. " " S. 86° E. 32 "  
 80.30 To Section corner

North Between Sections 26 & 27.  
 14.00 a Stream 30 links wide Co. S. W.  
 21.00 a Beech 24 in. Diameter  
 36.00 a Stream 25 links wide Co. S. E.  
 40.00 qtr. Section corner.  
 a Sugar 24 in. Dr. bears N. 75° W. 12 links  
 a Do. 28 in. " " S. 41° E. 9 "  
 59.00 a Stream 30 links wide Co. S. W.  
 61.10 a Bl. Ash 24 in. Diameter  
 80.00 Set Post for to Secs. 22, 23, 26 & 27.  
 a Beech 10 in. Dr. bears S. 14° E. 9 links  
 a Do. 10 in. " " N. 89° W. 15 links

East Between Sections 23 & 26. On Random  
 32.20 a Stream 32 links wide Co. S. W.  
 40.00 Temp. qtr. Section Post  
 80.39 Intersected N. S. line 4 links North of Post.

Land level 2<sup>nd</sup> Rate  
 Beech, Sugar, Oak  
 and Ash  
 Land level 2<sup>nd</sup> Rate  
 Beech, Sugar, Oak  
 and Ash  
 Land level 2<sup>nd</sup> Rate  
 Beech, Sugar, Oak, Walnut, Spruce  
 Sugar, Walnut, Oak, Dogwood, Spruce  
 Land level 2<sup>nd</sup> Rate  
 Beech, Sugar, Oak, Ash, and  
 Walnut, Maple, Spruce &c.

Chains  
 Links  
 West Corrected between Secs. 23 & 26.  
 40.19 qtr. Section corner  
 a B. Walnut 36 in. Dr. bears N. 76° E. 2 links  
 a Beech 12 in. " " S. 82° W. 24 "  
 80.39 To Section corner

North Between Sections 22 & 23.  
 19.00 a Beech 18 in. Diameter  
 40.00 qtr. Section corner  
 a Beech 12 in. Dr. bears S. 59° W. 32 links  
 a Sugar 12 in. " " S. 75° E. 14 "  
 56.10 a Beech 20 in. Diameter  
 80.00 Set Post for of Secs. 14, 15, 22 & 23 ✓  
 a W. Oak 15 in. Dr. bears S. 43° E. 3 links  
 a Beech 12 in. " " N. 12° E. 44 "  
 East Between Sections 14 & 22 On Random  
 5.80 a Stream 30 links wide Co. S. E.  
 40.00 Temp. qtr. Section Post  
 42.00 a Swamp  
 50.00 Left the Swamp  
 80.38 Intersected the N. S. line 12 links N. of Post.

West Corrected between the same  
 40.19 qtr. Section Post or corner  
 a Swamp Ash 12 in. Dr. bears N. 34° W. 15 links  
 a Beech 10 in. " " S. 48° E. 24 "  
 80.38 To Section corner

Land level 2<sup>nd</sup> Rate  
 4 part level 2<sup>nd</sup> Rate  
 Beech, Sugar, Oak  
 and Walnut, Spruce  
 Land level 2<sup>nd</sup> Rate  
 Beech, Sugar, Oak, Ash, and  
 Walnut, Maple, Spruce &c.

6

North Between Sections 14 + 15 ✓  
 11.50 a Stream 30 links wide Co. S. E. *Other Ditch*  
 14.50 a Beech 20 in. Diameter  
 27.50 a Brook 20 links Course S. W.  
 40.00 gen. Section corner ✓  
 a Blue Beech 10 in. dr. bears S. 8° W. 15 links  
 a Buckeye 11 in. " " N. 51° E. 15 "  
 58.00 a Hicksh 18 in. Diameter  
 68.00 a Swamp  
 75.00 Lift the Swamp  
 80.00 Set Post for to Sec. 10. 11. 14 + 15. ✓  
 a Hicksh 18 in. dr. bears S. 50° W. 32 links  
 a Do. 19 in. " " N. 3° E. 113. "

East Between Sections 11 + 14 On Random  
 30.00 a Brook 30 links wide Co. S. W.  
 40.00 Temp. gen. Section Post  
 80.24 Intersected N. S. line 14 links N. of Post

West Corrected between the same  
 40.12 gen. Section corner  
 a Sugar 10 in. dr. bears S. 29° W. 16 links  
 a R. Oak 36 in. " " N. 5° E. 21 "  
 80.24 To Section corner

*Sand level 2<sup>d</sup> Rate. Beech. Ash. Oaks Walnut Undergrowth. Spice*

*Sand level 2<sup>d</sup> Rate. Beech. Sugar. Ash. Syc. Oak. Walnut. Undergrowth. Spice*

Chain Links

North Between Sections 33 + 34.  
 15.00 a Hickory 24 in. Diameter  
 40.00 gen. Section corner  
 a Beech 15 in. dr. bears N. 32° W. 34 links  
 a Do. 10 in. " " S. 10° W. 4 "  
 57.15 a Buckeye 11 in. Diameter  
 80.00 Set Post for to Sec. 27. 28. 33 + 34.  
 a Beech 12 in. dr. bears S. 54° W. 19 links  
 a W. Oak 15 in. " " N. 48° E. 39 "

East Between Sections 27 + 34 On Random  
 40.00 Temp. gen. Section Post.  
 60.00 a Brook 30 links wide Co. S. West  
 79.93 Intersected N. S. line 12 links N. of Post

West Corrected between the same  
 39.96 gen. Section corner.  
 a Beech 12 in. dr. bears N. 85° W. 23 links  
 a Do. 8 in. " " S. 24° W. 12 "  
 79.93 To Section corner

North Between Sections 27 + 28.  
 21.10 a Beech 12 in. Diameter  
 40.00 gen. Section corner  
 a Sugar 18 in. dr. bears S. 29° E. 11 links  
 a Beech 8 in. " " N. 85° W. 28 "

*Sand level 2<sup>d</sup> Rate. Beech. Sugar. Oak. Walnut. Undergrowth. Spice*

*Sand level 2<sup>d</sup> Rate. Beech. Sugar. Oak. Walnut. Undergrowth. Spice*

Chain Links

59.00 a Sugar 18 in. Diameter  
 80.00 Set Post for to Sec. 21. 22. 27 + 28.  
 a Beech 10 in. dr. bears S. 21° E. 16 links  
 a Sugar 10 in. " " N. 21° W. 31 "

East Between Sections 22 + 27 On Random  
 40.00 Temp. gen. Section Post.  
 80.09 Intersected N. S. line 14 links N. of Post.

West Corrected between the same  
 40.04 gen. Section corner.  
 a Beech 14 in. dr. bears S. 39° W. 11 links  
 a Do. 12 in. " " N. 22° E. 21 "  
 80.09 Section corner

North Between Sections 21 + 22.  
 18.83 a Poplar 36 in. Diameter  
 40.00 gen. Section corner.  
 a Swamp 12 in. dr. bears S. 2° E. 19 links  
 a Burr Oak 12 in. " " N. 1° E. 31 "  
 58.18 a Hicksh 28 in. Diameter  
 80.00 Set Post for to Sec. 15. 16. 21 + 22.  
 a Beech 30 in. dr. bears S. 78° W. 6 links  
 a Do. 8 in. " " S. 65° W. 17 "

*Sand level 2<sup>d</sup> Rate. Beech. Sugar. Oak. Walnut. Undergrowth. Spice*

*Sand level 2<sup>d</sup> Rate. Beech. Sugar. Oak. Walnut. Undergrowth. Spice*

Chain Links

East Between Sections 15 + 22 On Random ✓  
 40.00 Set Post for to Section corner  
 80.11 Intersected N. S. line 36 links N. of Post.

West Corrected between the same.  
 40.05 gen. Section corner.  
 a Hicksh 12 in. dr. bears S. 17° E. 9 links  
 a Burr Oak 12 in. " " N. 45° E. 17 "  
 80.11 Section corner June 3<sup>d</sup> 1830.

North Between Sec. 15 + 16.  
 11.50 a Poplar 24 in. Diameter  
 18.77 a Brook 10 links wide Co. S. E. *Conc. Arch.*  
 40.00 gen. Section corner.  
 a W. Oak 14 in. dr. bears S. 47° E. 31 links  
 a Beech 8 in. " " S. 38° W. 7 "  
 62.10 a Beech 12 in. Diameter  
 80.00 Set Post for to Sec. 9. 10. 15 + 16  
 a Beech 12 in. dr. bears S. 69° E. 31 links  
 a Do. 6 in. " " S. 30° W. 11 "

East Between Sections 10 + 15 On Random  
 40.01 Temp. gen. S  
 80.16 Intersected N. S. line 25 links N. of Post  
 Land part level + part Rolling 2<sup>d</sup> Rate

*Sand level 2<sup>d</sup> Rate. Beech. Sugar. Oak. Walnut. Undergrowth. Spice*

*Sand level 2<sup>d</sup> Rate. Beech. Sugar. Oak. Walnut. Undergrowth. Spice*

8

West  
 40.00 corrected between sections 10 & 15.  
 qtr. section corner.  
 a Beech 18 in. Dr. bears S. 72° W. 31 links  
 at Hickory 24 in. " " S. 75° E. 20 "

80.16 To Section corner

---

West  
 11.00 Between Sects 32 & 33.  
 40.00 a Brook 20 links wide Co. S. E.  
 15.46 a Do. 10 " " " S. E.  
 20.50 a Hopping Elm 14 in. Diameter  
 40.00 qtr. section corner  
 a Beech 12 in. Dr. bears S. 20° E. 16 links  
 at Hickory 16 in. " " N. 46° W. 9 links  
 46.41 a Brook - - Co. S. E.  
 57.00 at W. Oak 24 in. Diameter  
 81.00 Set Post for to Sects 28, 29, 32 & 33.  
 at W. Ash 16 in. Dr. bears N. 27° W. 12 links  
 at R. Oak 30 in. " " N. 55° E. 9 "

---

East  
 25.00 Between Sects 29 & 33 on Random  
 Temp. qtr. section Post  
 10.00 Intersected N. S. line 46 links S. of Post

West  
 40.00 corrected between the same  
 qtr. section corner  
 a Beech 6 in. Dr. bears S. 24° W. 8 links  
 at Do. 15 in. " " N. 51° E. 4 "

6.00 To Section corner

Chains  
 Links

North  
 Between Sections 28 & 29.  
 15.00 at W. Oak 40 in. Diameter  
 40.00 qtr. section corner  
 a Beech 10 in. Dr. bears S. 43° W. 15 links  
 at Do. 10 in. " " S. 67° E. 22 "

60.50 a Beech 16 in. Diameter  
 80.00 Set Post for to Sects 20, 21, 28 & 29.  
 a Beech 14 in. Dr. bears N. 38° W. 42 links  
 at Do. 12 in. " " N. 10° E. 35. "

---

East  
 Between Sects 21 & 28 on Random  
 40.00 Temp. qtr. section Post.  
 79.94 Intersected N. S. line 44 links S. of Post

West  
 corrected between the same  
 39.97 qtr. section corner  
 at W. Oak 24 in. Dr. bears N. 43° W. 13 links  
 a Beech 16 in. " " S. 54° E. 10 "

79.94 Section corner

---

North  
 Between Sections 20 & 21.  
 21.62 at W. Ash 12 in. Diameter  
 40.00 qtr. section corner  
 at W. Elm 16 in. Dr. bears N. 25° E. 21 links  
 a Beech 12 in. " " S. 86° W. 24 "

61.00 a poplar 20 in. Diameter

Sand and Timber land  
 Sand land 2 1/2 Rats. Beech  
 Sugar, Oak, Spruce

Chains  
 Links

80.00 Set Post for to Sects 16, 17, 20 & 21.  
 at Hickory 12 in. Dr. bears N. 17° W. 3 links  
 at B. Beech 10 in. " " N. 50° E. 35.

East  
 Between Sections 16 & 21 on Random  
 40.00 Temp. qtr. section Post.  
 79.90 Intersected N. S. line 37 links S. of Post

West  
 corrected between the same  
 39.95 qtr. section corner  
 at W. Oak 40 in. Dr. bears S. 17° W. 17 links  
 at Do. 36 in. " " N. 66° W. 20 "

79.90 To Section corner

North  
 Between Sections 16 & 17.  
 22.65 at W. Ash 14 in. Diameter  
 40.00 qtr. section corner  
 a Beech 10 in. Dr. bears S. 50° W. 25 links  
 at Do. 6 in. " " S. 70° E. 16 "

59.76 a Beech 16 in. Diameter  
 80.00 Set Post for to Sects 8, 9, 16 & 17.  
 at W. Walnut 14 in. Dr. bears N. 33° W. 50 links  
 at Do. " 16 in. " " S. 59° E. 35.

Sand first 1/2 mile land 2 1/2 Rats.  
 East 1/2 mile Rich. Timber etc

Sand land  
 2 1/2 Rats. Beech  
 Sugar, Oak, Spruce  
 Sand and Timber land  
 Sand land 2 1/2 Rats. Beech  
 Sugar, Oak, Spruce  
 Sand land 2 1/2 Rats. Beech  
 Sugar, Oak, Spruce  
 Sand land 2 1/2 Rats. Beech  
 Sugar, Oak, Spruce

Chains  
 Links

East  
 Between Sections 9 & 16 on Random  
 40.00 Temp. qtr. section Post.  
 79.94 Intersected N. S. line 40 links S. of Post.

West  
 corrected between the same  
 39.97 qtr. section corner  
 at W. Ash 10 in. Dr. bears N. 46° E. 33 links  
 at Do. 15 in. " " S. 60° W. 16 "

79.94 To Section corner

North  
 Between Sections 31 & 32.  
 19.64 at Hickory 16 in. Diameter  
 40.00 qtr. section corner  
 a Beech 16 in. Dr. bears S. 26° E. 5 links  
 at Do. 15 in. " " N. 86° W. 20 "

51.00 a Brook 10 links wide Co. S. E.  
 60.10 a Beech 16 in. Diameter  
 80.00 Set Post for to Sects 29, 30, 31 & 32.  
 a Beech 10 in. Dr. bears N. 21° W. 15 links  
 at Do. 15 in. " " N. 66° E. 26 "

East  
 Between Sects 29 & 32 on Random  
 40.00 Temp. qtr. section Post.  
 51.00 a Brook 11 links wide Co. N. E.  
 60.00 at Do. 16 in. " " S. E.  
 80.16 Intersected N. S. line 13 links S. of Post.

Sand land good 2 1/2 Rats.  
 Beech, Sugar, Oak  
 W. B. Walnut  
 Sand land 2 1/2 Rats.  
 Beech, Sugar, Oak  
 W. B. Walnut  
 Sand land 2 1/2 Rats.  
 Beech, Sugar, Oak  
 W. B. Walnut  
 Sand land 2 1/2 Rats.  
 Beech, Sugar, Oak  
 W. B. Walnut



10	West Corrected between Secs 29 & 32. 40.08 qtr. Section corner a Beech 12 in. D. bears S. 70° E. 14 links a Do 10 in. " N. 35° W. 11 "
30.16	Section corner
West	Between Sections 30 & 31. 17.26 a Beech 12 in. Diameter 26.10 a Beech 10 links wide C & E. 44.08 qtr. Section corner a Sugar 18 in. D. bears N. 61° E. 34 links a Do 10 in. " S. 29° W. 24 " 55.60 a Elm 18 in. Diameter 79.50 Intersected West Boundary 65 links N. of Post a Sugar 18 in. D. bears N. 60° W. 9 links a W. Oak 56 in. " N. 46° E. 14 "
North	Between Secs 29 & 30 20.74 a Beech 18 in. Diameter 40.00 qtr. Section corner an Elm 12 in. D. bears N. 38° W. 27 links a Beech 10 in. " N. 56° E. 14 " 3-17 a Sugar 12 in. Diameter 1.00 The Post for to Secs 19, 20, 29 & 30. a Hickory 15 in. D. bears S. 12° W. 17 links a Hickory 14 in. D. " S. 66° E. 30 "

Chains Links	East	Between Secs 20 & 29 on Random Temp. qtr. Section Post Intersected N. S. line 14 links S. of Post.
40.00		
30.16		
West	Corrected between the same 40.08 qtr. Section corner a W. Oak 24 in. D. bears N. 70° E. 14 links a Beech 6 in. " S. 8° E. 35 "	
80.16		
West	Between Sections 17 & 30. 19.10 a Beech 18 in. Diameter 40.00 qtr. Section corner a Beech 6 in. D. bears S. 60° E. 22 links an Elm 16 in. " N. 9° E. 20 " 58.16 a Beech 16 in. Diameter 79.17 Intersected N. S. line 64 links N. of Post a W. Oak 18 in. D. bears N. 61° W. 21 links a W. Oak 24 in. " N. 78° E. 22 "	
North	Between Secs 19 & 20 28.79 a Sugar 18 in. Diameter 40.00 qtr. Section corner a Sugar 12 in. D. bears S. 18° W. 23 links a Beech 10 in. " N. 3° W. 13 " 55.00 a W. Oak 24 in. Diameter	

Chains Links	80.00	The Post for to Sections 17, 18, 19, & 20. a Sugar 18 in. D. bears S. 55° E. 6 links a Do. " 10 in. " S. 72° W. 23 "
East	Between Secs 17 & 20 on Random 44.00 Temp. qtr. Section Post. 80.08 Intersected N. S. line 12 links S. of Post	
West	Corrected between the same 40.04 qtr. Section corner a Sugar 18 in. D. bears S. 44° E. 3 links a Sugar 12 in. " N. 7° E. 31 "	
80.08		
West	Between Sections 15 & 19. 19.60 a Beech 16 in. Diameter 40.00 qtr. Section corner a Beech 10 in. D. bears N. 73° E. 13 links a Red Oak 40 in. " N. 34° W. 10 " 62.10 a Beech 18 in. Diameter 79.00 Intersected West Boundary 125 links N. of Post a Beech 12 in. D. bears N. 45° W. 25 links a W. Oak 24 in. " S. 61° E. 20 "	
North	Between Sections 17 & 18. 15.50 a W. Oak 14 in. Diameter	

Chains Links	20.50	a Wet Bushy Prairie
38.00		Left the same.
40.00		qtr. Section corner a Beech 20 in. D. bears N. 37° W. 4 links a Do. 12 in. " S. 4° E. 33 "
57.50		a Beech 24 in. Diameter
80.00		The Post for to Secs 7, 8, 17 & 18. an Elm 30 in. D. bears S. 37° W. 16 links a Beech 12 in. " S. 89° E. 33 "
East	Between Sections 8 & 17 on Random 40.00 Temp. qtr. Section Post. 80.04 Intersected N. S. line 11 links N. of Post.	
West	Corrected between the same 40.02 qtr. Section corner a Beech 24 in. D. bears N. 28° W. 25 links S. 55° E. 34 "	
80.04		
West	Between Secs 7 & 18. 17.15 a Beech 15 in. Diameter 40.00 qtr. Section corner a Sugar 20 in. D. bears S. 27° E. 17 links a Do. 30 in. " N. 49° E. 43 "	
55.58		a W. Elm 24 in. Diameter

Sand level 2 1/2 feet  
Timber the same with Oak  
Timber as before  
Sand level 2 1/2 feet

Sand & Timber the same  
Sand level 2 1/2 feet: Beech  
The ground is soft and green  
Sugar  
Sugar level 2 1/2 feet  
Timber as before

Sand level 2 1/2 feet: Beech  
Sugar level 2 1/2 feet: Beech & Spruce  
Sand level 2 1/2 feet: Beech  
Sugar level 2 1/2 feet: Spruce

78.52 Intersected West Boundary  
181 links North of Post  
a Surp. Ash 12 in. Dub. N. 20. W. 78. L.  
at 50 " 10 in. " " 42. C. 33. E.

June the 8<sup>th</sup> 1820

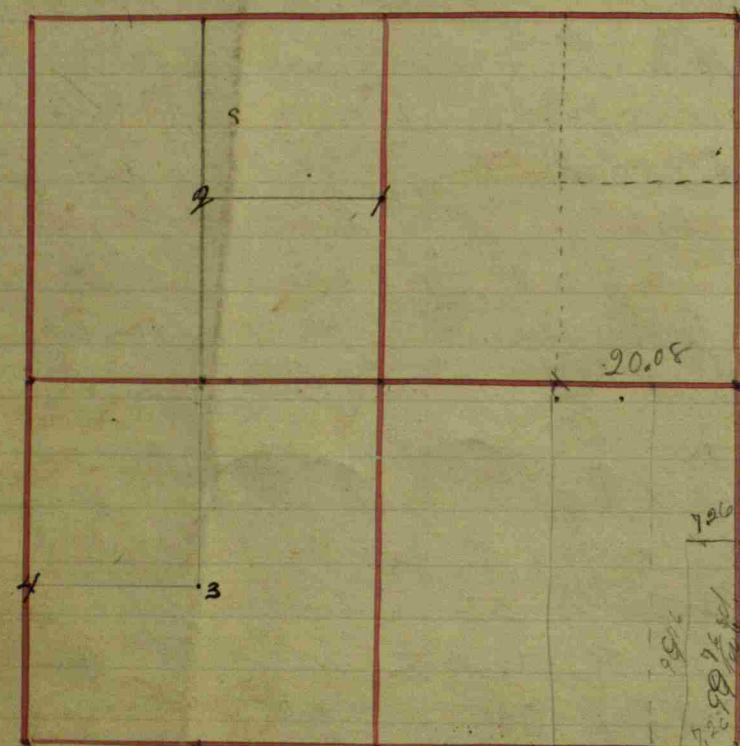
Surveyed by  
Stephen Hill D. S.

L.  
L.





Section 14 North, Range 10 East



Owner's name & Cor.	Witnesses	Dist.	Bearings	Links
Center East of Center at Stone 16+20	an Elm & a R. Oak	16	S. 84° E	73 1/2 75
				Book C.P. 223

Dryd Case

120 R.R. 7 L. North of center of Section  
a cor, Rock 10x12

a Red Oak	6	N 62° E	36	
a Mulberry	6	S 17° E	141	
N.E. cor of Sec, a Rock 4x10x12	Red Elm	10	S 3° W	79 1/2
	a B. Oak	10	S 30° E	56

120 R.R. 7 L.  
N. from E 1/2 mile

a Bush	12	N 74° W	29 1/2	
do	14	S 86° E	28	
Cor. E. Cor. from old trees Stone 16x20	Elm	16	S 35 3/4° W	17 1/2
	ROAK	16	S 59° E	38

Jno. F. Everett & Levi Shiley - survey for,  
1 - Stone 7x7x21

Stone	West	15	feet
B. Walnut	N. 21° W.	54 1/2	"
Oak	N. 26° W	40 1/2	"
Sycamore	N. 66° E.	31 1/2	"
Stone	East	20	"

J.W. Potter, Co. Surv. Nov. 1898.

Owner's name & Cor.	Witnesses	Dist.	Bearings	Links
SE corner of Section 14 The other witness	an old oak an old ash	24	S. 64 1/2° E	78 1/4 Still standing; Book C.P. 160
1/2 mile, Sec. 14, R. 10 = cor. from (14+15)	a blackberry a b. oak	15 14	S. 83 1/2° E S. 19° E	73 3/4 75
Center West of Center at Stone 8+15	a R. Oak a Sugar	20 18	S. 49 3/4° W S. 42° E	45 1/2 42
Center of Section at Stone 16+24	a W. Oak a Bitto	20 24	N. 72° E N. 74° W	26 1/2 38

Ballance at the top

Jerry Carter, John and Henry Edwards - survey for.

1/2 mile reestablished  
Stone 9x15 wit. stone East 3 3/4 feet & a  
wit stone South 7 1/6 feet.

N.B. - The wit. stone E. was supposed to be the old cor.  
though never recorded in Boone or Hendricks Counties.  
The wit. stone S. was placed by the Boone County  
Surv. in 1875 but I find it to be incorrect  
and not establish by the rule for establishing  
such corners. Hence I establish my cor.  
as described above to the satisfaction of  
all parties and as seen above use the  
other rocks as my witness rocks.

Nov. 14th. 1896. J.W. Potter, Surveyor Hendricks Co.

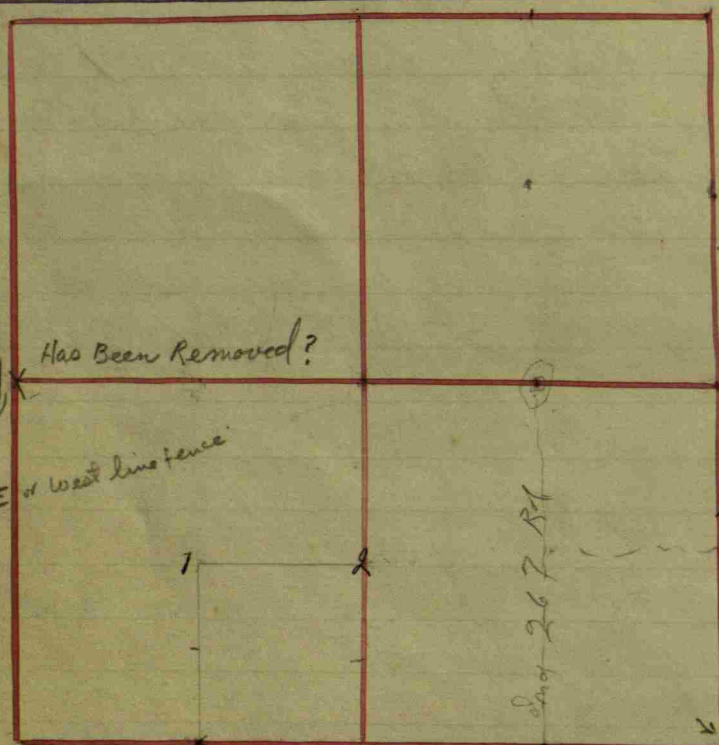
3. South of center west of center  
23.75 ch a stone 17"x12"x10"  
wit: a walnut 8" in dia  
S 1 1/2° W. Dist 56 lk.

4. South of West 1/2 mile a stone  
12"x10"x8" 23.75 ch.  
wit: a stone 8"x10" 1/2 25 1/2° West  
also a Hackberry tree S. 86° West.  
Apr. 6, 1906.

L.W. Thompson Dep't. Surv.

SE cor sec. - a good stone found and re-witnessed to wit:  
NE corner of cloak room of brick school house - SW 91.64 ft.  
Elm 8" Southward 27.9 feet, Oak 30" NE.  
44.2 feet, S. edge corner post - north 17.3 ft.  
SE 1/4, Center S. of <sup>Stone</sup> Found NE corner block foundation house  
SW 50.2 feet, Elm 8" South 19.5 ft, NW  
corner porch foundation - SW 60.6 feet.  
Stanley Shurtle, April 13, 1945

Section 15 T17 North, Range N East. Owners names & Co. Witnessed Dist. Bearings Links



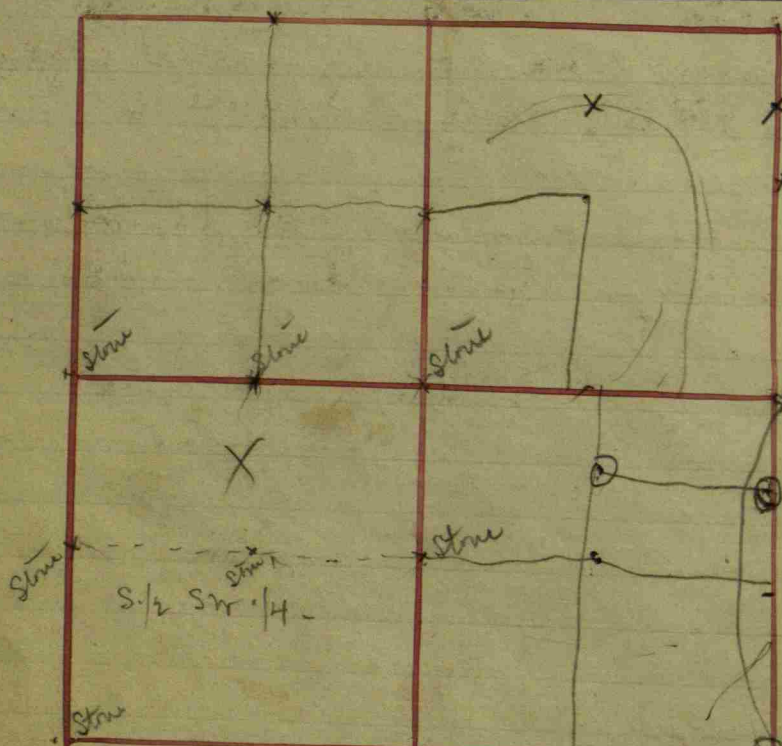
Center of Section 15	a W. Oak	16	S. 20° E	29
a Stone 30+24+16	a Ditto	36	N. 67° E	36 1/2
Center West of Center	a Birch	10	S. 86° W	15
a Stone 10+7+6	a Hickory	15	S. about 80° E	41
	Book C. p			332

Center S. of SW 1/4	a Birch	20	S 47° E	45
1. Center of SW 1/4				
a stone 14" x 10"	Elm	20"	S 45° E	58
a Stone E. of SW 1/4				
Stone promised	Apple tree	14	S. 34° W	24

Owners names & Co.	Witnesses	Dist.	Bearings	Links
NE corner Sect. 15	Witness gone: the other a Walnut			
a Stone 12+10+8	a B. Oak	18	N. 35° E	62
North 1/2 mile Reclamation	from roots of old Witness trees, chains			
a Stone 16+14+8. and	a B. Walnut	8	N. 89° E	258 1/2
Consist. of N 1/4, a Stone 15+10	a Sugar	12	N. 57° E	140
Cent. S. of N 1/4, 2 Stone 8+8	a B. Walnut	24	N. 16 3/4° W	129
Cent. of N 1/4 a Stone 20+8+7	a Stone Witness on line		West	30
Cent. E. of N 1/4 a Stone 14+8	a W. Oak	28	N. 81° W	54
	a B. Gum	26	S. 47° W	45

Balance at the top

Section 16 1/4 North, Range N East.



Witnesses	Dist	Bearings	Links
Relocated from old			
Center West of SW 1/4	a Stone		
Center South of Center	a Stone 8+16		
Center of SW 1/4	a Stone 16+32		
SE cor. of Sec. a Stone 12+16			
Center of SE 1/4	a Stone 10+15		
Center N. of Cen. of NE 1/4	a Stone 13+24		
Center of NE 1/4	a Stone 8+10		
SE cor. of Sec. a Stone 16+16			
Cen. East of NE 1/4 of NE 1/4	a Stone 14+16		
Center North of Center	a Stone 12+16		
NW cor. of the Sec.	a Stone 16+20		
Center West of SW 1/4	a Stone 15+16		
Center of NW 1/4	a Stone 8+16		
Witnesses:			
a W. Oak	24	N. 35° E	27 1/2
a Rabbit	30	S. 24° E	98
a Beech	15	S. 38° E	80
a W. Oak	16	N. 43° E	25
a Beech	18	N. 79° W	44
a Beech	16	N. 54° W	23 1/2
a B Walnut	5	S. 74 1/2° E	73
a Rabbit	6	N. 36° W	35
a Hickory	16	N. 80 1/2° W	32
a Beech	16	S. 42° E	74
a W. Oak	24	S. 50° E	52
a Rabbit	16	N. 44 1/2° W	103 1/2
a Yucca	.....	N. 80° E	84
a W. Oak	24	S. 49° W	100
a Beech	14	S. 83° W	85
a Sugar	4	S. 59° E	48
a Oak	6	N. 59° W	11
a Yucca	14	S. 3 1/2° E	185
Relocated by running S. W. and N. S.			
a Stone	15+16		
a B. Oak	24	N. 30° E	65
a W. Oak	24	N. 80° E	106
Book E. p			189

Witnesses	Dist	Bearings	Links
1/4 mile Post Sec. line	a Stone 9+15		
West 1/2 mile Post	a B. Walnut 30	N. 56 1/2° E	51
a Stone 12+16	a Beech 16	S. 20° W	87
1/2 mile Post	(a Stone 14+20)	Been Removed?	
Center East of Center	a Stone 12+17		
Center of Sec. a Stone 12+18	a Sugar 14	S. 35° W	97
Center West of Center	an Ash 8	S. 50° E	1 1/2
a Stone 20+24	a Beech 16	N. 47 1/2° W	39 1/2
SW corner of the Section	a Ditto 16	S. 30 1/2° E	23
Thence to the top	a B. Oak 36	S. 58 1/2° W	90

Owners names, Cor. Witnesses, Dist, Bearings, Links

60 Rods west of the center East of the SW 1/4  
 a stone 12x12x12 a Beech 24 N 48 E. 55 1/2 L  
 Thence west 56 Rods to the true west  
 corner of Widows Wrights Dower - a stone  
 10 x 8 x 10 = an ash - 18 N 63 1/2 E 26  
 Thence South to the section line - 5 to the  
 S.W. cor. of Widows Dower - a stone - corner  
 witnessed by an oak 254 N 20 W 54 L  
 Cutting off 28 acres as Dower =  
 + Leaving 30 acres - East of Dower =  
 + 22, more or less - (gain of 10 Links) west  
 of Dower -

Beginning at the widows SW cor as above: Thence  
 North 27 Rods + 19 L =  
 Witness an Elm 20 N 33 E 32 L  
 Thence west 11 Rods: Thence South 27 R + 19 L  
 to center of Road Thence East Eleven Rods  
 to beginning for - Wm Wright. Surveys tract  
 Long Right West 5.75 Acres -

27 R + 19 L N of SW cor of Sec - Surveys NW cor  
 a Beech 16 S 86 E - 84 L

For partition of 1/2 S. 1/4 see page 84.

22.69 Rods S from cent W of SW 1/4 =  
 an Elm 10 N 42 1/2 E - 68 Links  
 cutting off 6 1/2 acres for ferrying on the N of 22<sup>nd</sup>  
 off the west end of S 1/2 SW 1/4 =

22.69 Rods S of Widows N.W. cor. (See previous  
 description) a Beech 12 - N 83 1/2 W - 43 L =  
 cen. E. of N E 1/4 of S E 1/4 stone 12x18 N. S. and  
 cen. W. .... stone 8x12 wit. B. Ash 30"  
 N 38 1/2 E. 54 1/2 L

Revised Wright Land Partition  
 Mar 25 1903

+ Stone 10x14x24 which is 747 1/2 & South  
 of cen W S W gr. wit by Sugar 14 N 87 E - 82 1/2 L  
 & by Stone N 89 1/2 E 34 1/2 L

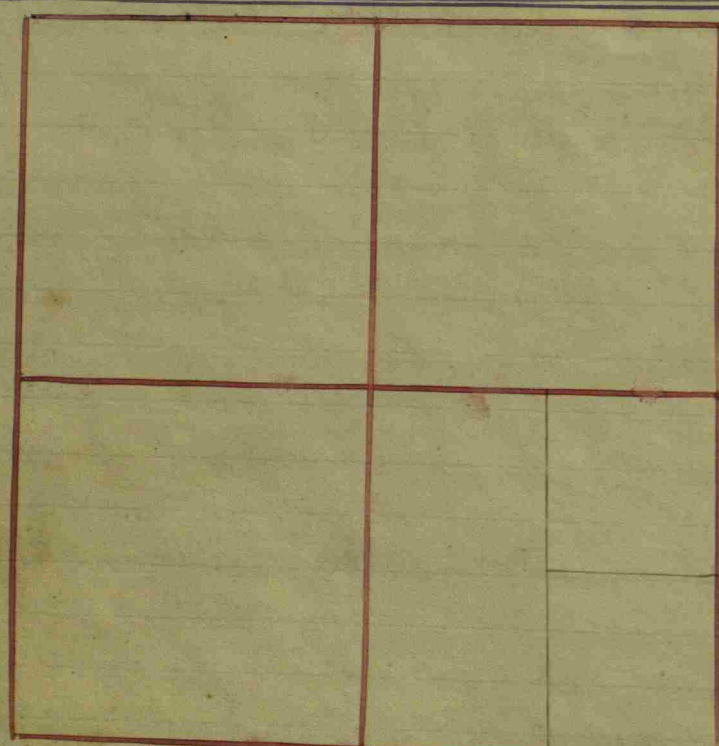
180 ch Sq above corner is  
 Stone 12x12x24  
 by Stone South 87 E 50 1/2  
 & Spike nail in Walnut 12" N 86 1/4 E 95 1/2

Stone 20x12x8 is 747 1/2 ch S - 3 cen N. SW S W  
 Stone North 180 ch.

180 Sq above corner is  
 Stone 24x12x5 by Sugar 14 N 65 3/4 W 80  
 Walnut 12 N 38 1/2 W 61

Cen N. SW S W is Stone 14x14x8 by Stone South  
 25 L & Stone west 30 L. W F Franklin S. N. E.

Section 17 North Range 1st East. Owners names & Co. Witnesses Dr. Bearings Links



William Watson, heirs	These 1/2 acres & the 1/2 of the NW 1/4 of Sec. 17
Eliza J. Money & James Money	1/2 acres in South East corner of the tract
SW corner of the same	a W. Oak 28 N. 7° W 38
	a Ditto 18 N. 20° E 93
SW corner of same tract	an Elm 30 S. 87° E 68
SE corner of same	a Beech 24 S. 72° E 24 1/2
Thomas J. Watson	45 acres in South West corner
NE corner of the same	a W. Oak 24 S. 38° W 32
	a Ditto 36 N. 19° E 40
SW corner of same	a Beech 12 S. 6° E 118
Elizabeth Watson	5 1/2 acres in North West corner
Francis M. Watson	5 1/2 acres in North East corner

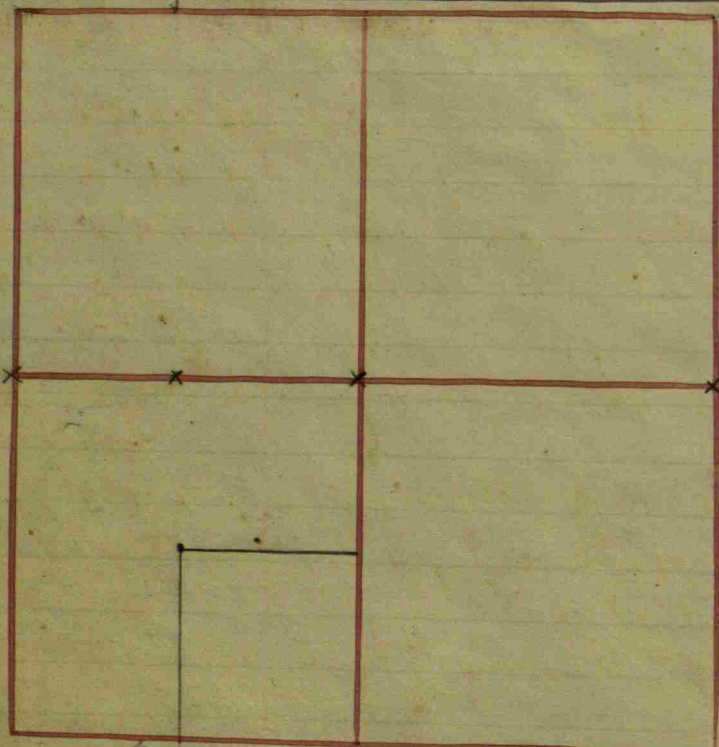
Owners names & Co.	Witnesses	Dr.	Bearings	Links
Center of Section 17	a W. Oak	28	S. 87 1/2° E	57 1/2
a Stone 10+9+7	a Ditto	—	N. 62° E	65
1/2 mile West, a Stone	a W. Oak	36	S. 7° W	83
Center E. of center	a Beech	16	S. 50 1/2° E	62
a Stone 12+9+8	a Ditto	18	S. 19 1/2° W	62
			Book 6, p. 312	

Ann Matilda Potts	52 acres on West side of tract
SW corner of her lot	a W. Elm 18 N. 5° W 17
	a W. Oak 9 S. 21° E 20
Center on line of the	an S. Ash 28 N. 35° E 15
tract	a W. Elm 28 S. 11° E 50 1/2
	Book 6, p. 329
Section 17-18	North on line in center of SE 1/4
a corner 1/3 to the 2/3 North	an Ash 18 S. 82° E 27
2 lines West across the	a Stone with 1/2 mile
where	80, Sec. Corner 1/3 South + 2/3 North
a Stone on line	a W. Oak 36 N. 13° W 228
	Book 6, p. 335

Other plants  
of section 17

Survey for Money, Potts et al.  
 1/2 mile of 17-17-1 E.  
 Stone 8 X 8 X 12 Catalpa 6 S. 67 1/2° E. 143 L.  
 Maple 15 S. 45° E. 149 1/3 L.  
 Thence West 11.74 ch. to a stone 6 X 6 X 12  
 B. Walnut 5 S. 83° E. 184 1/2 L.  
 Do 5 S. 84° E. 263 L.  
 Thence North 15.90 ch. to a Stone 9 X 6 X 12  
 Maple 16 N. 85° W. 51 2/3 L.  
 Do 8 N. 38° W. 88 1/2 L.  
 Hickory 15 S. 41° W. 66 L.  
 Thence North 18.39 ch. to a Stone 8 X 16  
 Hickory 18 N. 89 1/2° E. 164 1/2 L.  
 Elm 36 N. 77 1/2° E. 213 L.  
 15.96 2/3 ch. N. of SW. cor. of Sec.  
 Stone 8 X 2 X 18 N. Cherry 12 N. 61 1/2° E. 133 1/4 L.  
 Maple 4 N. 89° E. 90 L.  
 Thence North 18.30 1/2 ch. to a Stone 12 X 16  
 with Stone South 25 Link  
 J. W. Potter, S. H. Co.

Section 18 1/2 North Range No East. Owners names &c. Witnesses Dr. Bearings Links



Witnesses	Dr.	Bearings	Links
an Apple tree 74	N. 42° W	14	
an Elm 8	S. 53° E	96	
	Book C. p	71	
William A Dale 68 1/2	acres off the E. side of NW 1/4 Sec. 18		
an Elm 24	N. 38° E	27	
a ditto 24	N. 27° W	37	
a Sugar 20	N. 24° E	15	
a Dog wood 4	.....	2 1/2	

Witnesses	Dr.	Bearings	Links
John Dillon 63	acres joining on the West:		
Beginning at Dale	NW corner: Thence with Section		
line 51 Poles 12 links	a Beech 20	N. 23° W	30
	a Walnut 6	S. 63° W	19 1/2
	Thence S. 85° W 15 Poles 12 lin		
	a Burr oak 36	S. 17° W	129
	to the line dividing the Sec. E & W		
	a Hickory 11	N. 85° E	14

Abiah Dillon  
December 2<sup>nd</sup> 1853  
Cyrus Rogers Det. Gen.  
Book C. p 115

Witnesses	Dr.	Bearings	Links
William Dillon	8 acres off the North side of NW 1/4 Sec. 18		
a Camrose 30	S. 82° W	30	
an Elm 20	S. 14° W	23	
a Hickory 12	N. 84° E	4	
a Sugar 19	N. 56° W	19	
	Book B. p	217	
40 Acres, being	80 Poles Square off the S 1/4 Sec. 18		
and West corner	of the said 1/4		
SE corner	a Hickory 12	N. 2° E	19
	a ditto 8	S. 53° E	40

Thence to the top  
Balance at the top

owners names &c. Witnesses Dr. Bearings Links

John Dillon  
Beginning at the  
line 29.93 chains  
10.25 chains to Huff  
to Huff. corner  
where is  
Thence East 33.81 chs.  
Thence North 19.81

63 Acres:  
Cent of Sec. a Stone 12, B Walnut, 10 x 88 E. 64  
Again: Beginning  
West 33.81 chains  
to where  
Thence North 20.19 chs.  
Thence East  
where  
Thence South 20.  
the Beginning:

Containing 68 1/4 acres:  
Book C. p 155

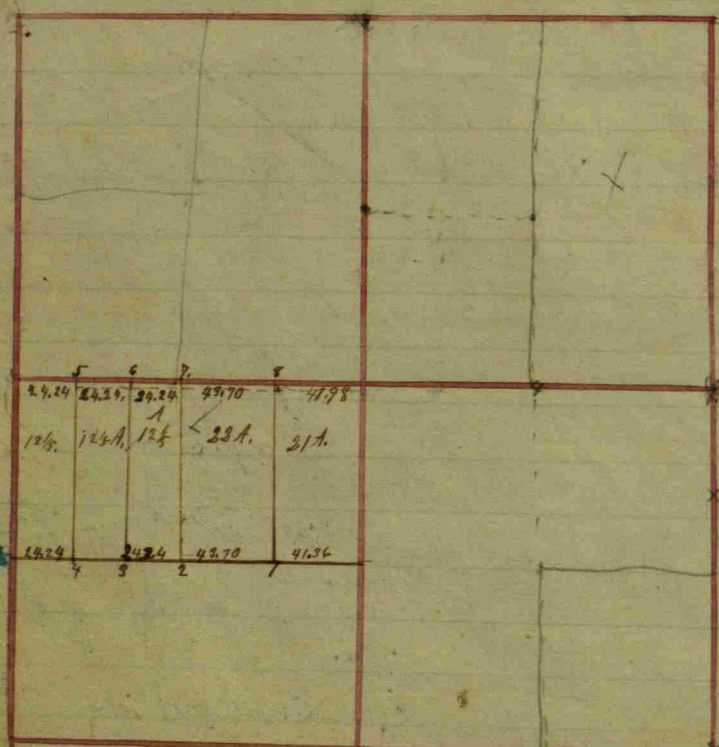
Owners names &c. Witnesses Dr. Bearings Links

W 1/2 mi. a Hickory 10 N 55 E. 40 1/2  
SE 1/4 cent. S. a W. Oak 30 S 22 1/2 E 115  
" " " 16 N. 87° W. 253.  
cent. W. of sec. cen. a Sugar 10 N 11 1/2 W 38 1/2  
" B. Oak 40 S 11 1/2 E. 35 1/2  
E 1/2 mile of sec. 18 W. cherry 10 N 51 1/2 W 35 1/2  
a stone 10 x 12 x 16 + B. Walnut 20 S 8 1/2 W 87

11.75 ch. W. of E 1/2 mile An Elm 20 N 7 1/2 W 29  
11.25 ch W. S. E. cor of sec. A Beech 22 S 11 W. 60

Veatch et al survey for.  
1/2 mile Stone 8 x 10 x 12 Beech 24 S. 24 E. 38 3/4 Ft.  
Stone S 7 1/2 W. 9 "  
Thence North 80 rods Stone S 61 1/2 W. 20 "  
to a Stone 6 x 10 x 8 Oak 6 N. 12 W. 84 1/4 "  
80 Rods E. of S. W. cor. B. Walnut 10 N. 53 1/2 W. 35 5/6 "  
of Sec. is a Stone 5 x 12 x 15 W. Oak 30 N. 4 1/2 W. 46 7/6 "  
Thence North 80 rods Apple tree 15 N. 42 W. 9 "  
to a Stone 10 x 12 B. Walnut 12 S 7 1/2 E. 51 "  
J. H. Potter

Section 19 T17 North Range N1. East. Owners names etc. Witnesses. Dr. Bearings, links



Witnesses	Dr. Bearings	links
others, a Surveyor printed, 19		
Center of Section set from South 1/2 mile	a Beech 12 N. 73 1/2 E 77	
a Rock 8+20	1 a B. oak 12 S. 72 1/2 W 124	
Center S. of Cent. a Rock 8+17	a Beech 14 S. 38 1/2 W 10	
West 1/2 mile	a Beech 14 N. 3 E 60	
a Rock 12+19	1 a Hickory 12 S. 21 E 95	
Center West of S. 1/4	a B. oak 36 S. 86 1/2 W 35	
a Rock 9+16	La Ditto 5 N. 80 1/2 E 20	
	Book C. p. 135	

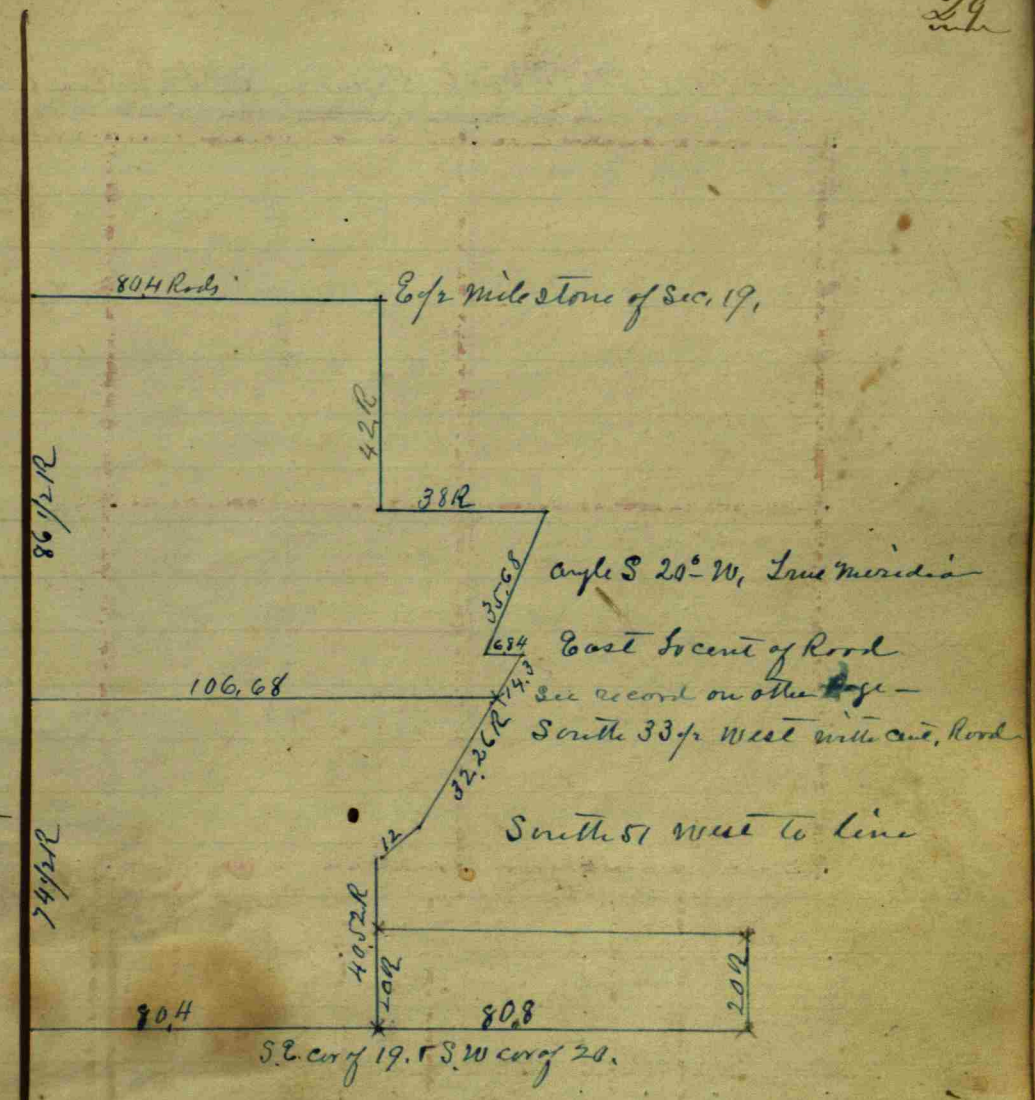
Witnesses	Dr. Bearings	links
G. Dickerson	a Beech 15 N. 32 E 16	
The S. E. 1/4 of Sec. 12	1 a Hickory 21 N. 36 W 11	
Explicit	Book B. p. 288	
Beginning at the	1/2 mile Post West in Section 19	
Thence East 38 Poles	a Spruce 8 North 7	
Thence S. 25 E 8 Poles	a willow South 8	
Thence N. 68 E 20	poles; Thence N. 56 E. 23 Poles	
to Alexan. Clark East	line, 6 Poles South of the corner;	
where is	a Beech 18 N. 60 E 47	
Thence South with	line 154 Poles to the corner where	
	thence to the top	

Center of N. 1/2	1 a Spruce 6 S. 31 1/2 W 89	
Stone 12 11-8	a Beech 18 N. 36 W 111	
Center N. S. E. 1/4	1 a Stone 12 x 15 inch	
	a B. Walnut 8 S. 70 1/2 W 59	
86 1/2 Poles South from the Center N. S. E. 1/4		
a Stone 12 x 12 x 20,		
a Spruce 12 N. 44 1/2 W		99 1/2
Thence N. 87 E. 106.68 Poles to Center of Road		
a B. Walnut 3 36 E		30 1/2

Owners names etc. Witnesses. Dr. Bearings, links

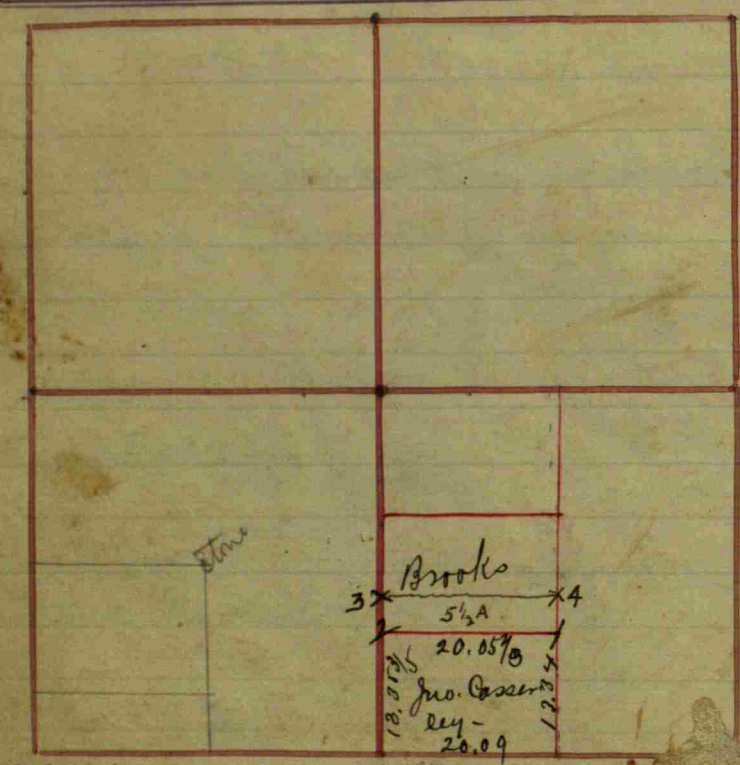
Witnesses	Dr. Bearings	links
Corner N. of N. W. 1/4	1 W. oak 24 N. 20 E. 77 1/2	
Stone 8 x 10	1 a B. Walnut 6 N. 15 W 34	
Elijah Beach's estate		
	1 a S. oak 24 S. 6 1/2 E 80 1/2	
	2 a B. Walnut 4 S. 80 W 122	
	3 W. oak stump N. 70 W 100	
	4 a B. Walnut 6 S. 81 W 17 1/2	
	7 a sugar 16 4 1/2 E 43 1/2	
	5 W. oak 20 S. 66 1/2 E 67	
	6 a S. oak 26 S. 37 E 80	
	7 Stake driven but no rest.	
	8 a S. oak 10 N. 35 E 102	

5 ch. N. of S. N. cor.  
Stone 10 x 10 x 16 Stone East 25 L.



For Smith Land Partition see page 81

Section 20 T17 North, Range N.1 East - owners names &c



Cor	Witnesses	Dr.	Bearings	links
Center of the Sec.	3	a Hickory Elm	S. 20° W	23 3/4
a Rock 20+16		a baby run	N. 76° W	35 1/4
Center of SW 1/4	4	a Rock		
Center on E side SW 1/4	5	a B. Oak	N. 46° W	35 1/2 or Center
a Rock	6	a Rock	S. 10° W	41 1/2 S. of center
a Rock 12+14	1	a Sugar	N. 59° E	41 1/2
a Rock 14+16	2	a W. Oak	S. 57° W	40 3/4
by former Surveyors; SW 1/4 found to be 160 links E & West?		at 7, 8, & 9 Rocks found, Established Rods + 21 links N & S and 160 Rods + 34 links E & West?		Book p. 191
cen. W of NE 1/4		a B. Oak	N. 22° E	55
cen. N of NE 1/4		a Sugar	N. 35° W	71 1/2
Center S of NE 1/4		a Ditto	N. 16° E	57
a Stone 15+14+10		a Ditto	N. 30° W	58 1/2
Center of NE 1/4		a B. Oak	S. 19° W	13
		a Ditto	S. 74° E	15
		a B. Oak	N. 52° E	7
		a Sugar	N. 1° E	33
2nd N. 22° 15 70				Book p. 312
1 - Stone 8x14		Ash	N. 23 1/2 E	6 3/8 Links
2 - Stone 6x16		Stone	East	21 Links
			West	21 "

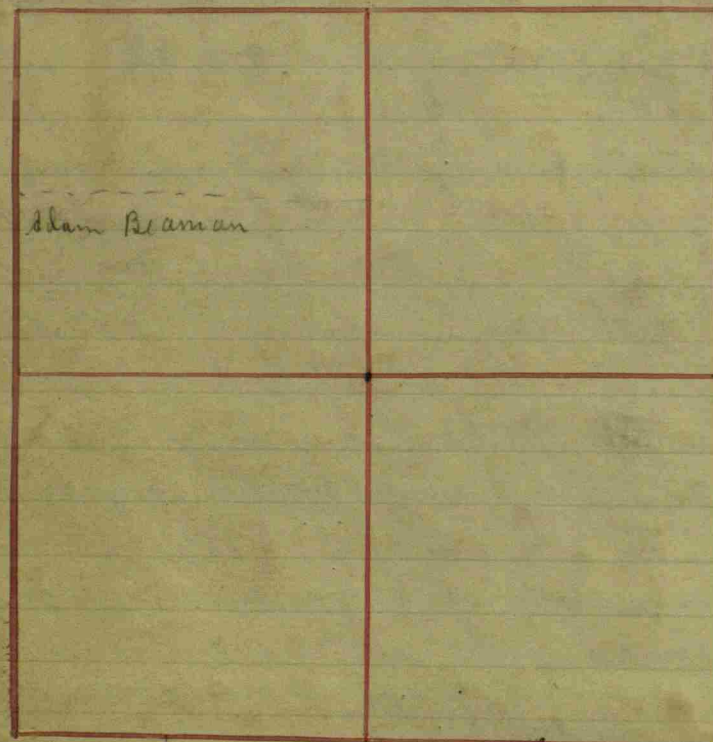
Minus 9.8  
in Description

Owners names &c	Cor	Witnesses	Dr.	Bearings	links
Section 20, T17, 1 East				20 Rods North of center S. of center	
The 80 being 4 1/2 in				too wide, cut off 10 Rods	
a Stone 18+12+7				a Hickory 28	N. 84° W 9
19 Rods + 24 links				North of center of the SW 1/4	
a Stone 24+15+10				W. of a Stone 15+12+9 East on line	18
					Book p. 335
cen. N. NW 1/4				gray Ash 12	N 24° E 61
cen. W. NW 1/4				S. Ash 15	S. 32° W 62
cen. N. W 1/4				Stake driven - no witness.	
39.80 R. S. of cen. of NE 1/4 a cor. Stone promised				Maple 12	N. 12 1/2° W 87.
				S. Oak 10	N 16 1/2° E 35
39.80 R. S. of cen. N. of cen. a cor. (Stone promised)				a sugar 10	N 38° E 41 1/2
				a oak stump	S. 71 1/2° W 20 1/2 S
A cor. 7.70 ch S of cen. E. of sec. cen. Stone promised					
				wit. by a stone 25 links west on line	
A cor. 7.70 ch S. of sec. center Stone promised					
				wit. by a stone 33 links E. on the line.	
Feb. 17 - 1909 - By W.K. Johnson Deft Surveyor, under John Kain, Survey of Mendocino Co.					
					3rd Stone 2.75 ch. N. of (2) and Stone 2.75 ch. N. of (1) For 1/2 A.

A survey of E. Lout and his mother  
N. W 1/4 center N. of cen. 11x12x9.  
Witness a wash 17 N 14° E 62 L. and a Rock  
25 N 81 1/2° W. 85 L. A survey for Thompson  
Cassidy, Henry S. W 1/4, commencing 42 Rods S.  
of cen. N & S. 48 Rods, thence W. 20 Rods thence N  
48 Rods. thence E 20 Rods. to beginning a stone  
at each cor. commencing 20 Rods N. of cen  
S. a stone thence N. 51.16 Rods thence W 17.2 R.  
thence S. 51.16, then E 17.2 Rods. to beginning  
A stone at each cor. T. Cassidy & Henry S. W 1/4  
For Lout & mother N. W 1/4, cen. S. a stone  
11x13x7 round witness a stone W. 11x8 6.6 links  
N. E. corner a stone 7x7 1/2 x 16. Witness a  
Sugar ash 14 N 15° W. 44 L. A Hickory 17  
A sugar also 20 S 52° W 99 L.  
S 57° W. 58 1/2 links Georg. Potts & J. Brooks  
were chainmen Book on p. 368  
Witnesses  
A small stone - B. Walnut 10 S 19° W 122  
in Stone 8x11 1/2 x 6 30  
centr. of NW 1/4  
a stone 4 1/2 x 16 x 11 1/2 wit. by a stone N on line 15 L  
centr. E. of NW 1/4 a stone 7 1/2 x 15 x 9 1/2 J.H. McC. S.



Section 21 T7 North Range N1 East. Owners names & Co. Witnesses Dr. Bearings Links



14 R. to N of the centre of the Centre E of the SE 1/4  
cutting off 140 acres more or less -  
a Stone 12x14 - a Hickory 8 S 82 W 44

Centre E of SE 1/4 a Stone 10x12  
a Walnut 8 S 22 W 54 1/2

Centre West of the N. W. 1/4  
a Small oak 8 N 88 E 90 1/2

Mar 16 1900

Center of Section delineated by running both ways. All parties being present and consenting thereto (except also a witness who sent word to go on without him)

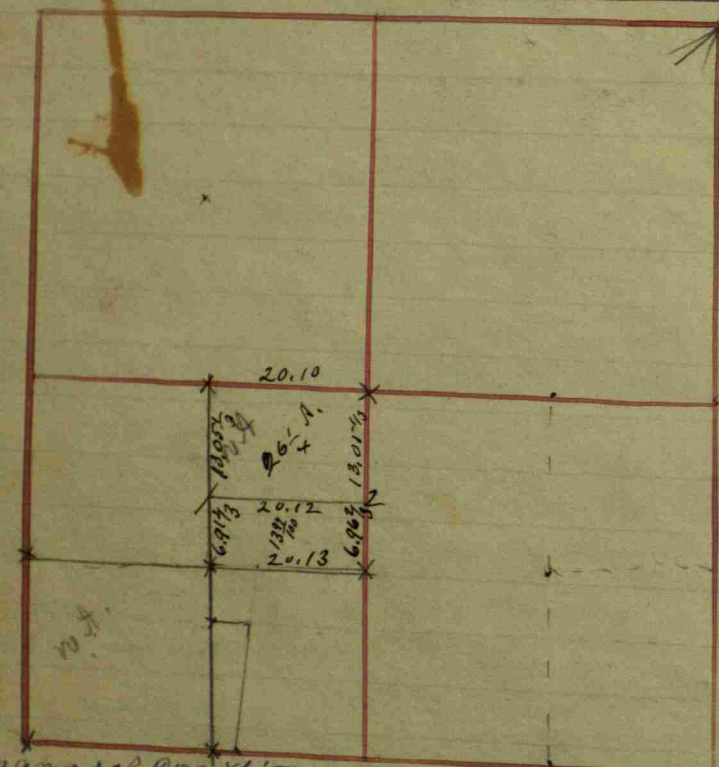
Stone set at Maple 15 dr - E 103 1/2  
H. S. Franklin Sec

Owners names & Co.	Witnesses	Dr.	Bearings	Links
SE Corner of Sec. 21 Re	a Beech	20	N. 48 1/2 E	35 1/2
located: a Stone 30x20	a Hickory	24	S. 25 1/2 W	28 1/2
Center South of SE 1/4	a Beech	18	S. 6 1/2 E	22 1/2
a Stone 18x12	a Ditto	12	S. 85 1/2 E	71
Center of Section	found by running across the Sec both ways.			
	a Beech	15	S. 21 E	7 1/2
	a W. Oak	36	N. 5 1/2 E	29
Center North of SE 1/4	a Beech	12	S. 82 E	9 1/2
a Stone 22x18 square	a Ditto	15	N. 4 E	16
			Book C. p.	191

7 1/2  
66  
45 0  
45 0  
119 0

29  
66  
174  
174  
191 0

Section 22 N 7 North Range NE East. Owners names & Co. Witnesses



Center of SE 1/4	Witnesses	Dr.	Bearings	links
	a Cherry	4	S. 85° W	6
	a n Ash	6	S. 86° E	3 1/2
Center East of Sec.	a Sugar	18	S. 22° W	21 1/2
Center	a Hickory	18	N. 6° W	51
Center of NE 1/4	a Beech	24	S. 3 1/2° E	53
	a Poplar	10	N. 7 1/2° W	24 1/2
	Book C. 1			36

Center W. of NW 1/4	a Stone 20x16 an Apple Tree		S 71° E	59 1/2
W 1/2 mi Stone 18x20 rods	a Hickory	6	S 71° W	179 1/2
66 Rods S of W 1/2 mi	a Stone 12x15	8	S 82° E	126
Center W of center	a Sycamore	40	N 10 1/2° E	9
center NW 1/4	a Stone 20x16x16			
	an Elm Double	24	N on the line	4

Center W SW 1/4	a Stone 18x15. a Book	8	S 42° E	100 1/2
Center S. S W 1/4	a Stone 10x12 - a Cherry	10	S 13 1/2° W	177 1/2
	a Small Sycamore	5 3/4	W. 71° E.	
	Thence North Sixty rods; thence East 19 rods to center of ditch, thence S 4° W 4 rods, thence S 14 1/2° W. 65 1/2 rods. thence S 7° West fifty rods & 5 links to center of road on Section line - Estimate to contain 5 1/2 acres. More or less -			

Witnesses	Dr.	Bearings	links	
Center North of Center of Section 22	a. Ash	4	S. 75° E	7
Center of Section a Stone 10x16 =	a Buckeye	6	N. 64° W	12
	a. Ash	16	S. 80° E	15
	an ash	5	S 7° E	21 1/2
	an Elm	36	N. 19° W	31
Center South of center a Stone 10x12 =	a Sugar	24	S. 78 1/2° W	18
a small Elm S 19 1/2° W 39 1/2	a ditto	12	N. 6° W	17
Center West of NW 1/4	a Beech	12	N. 47° E	7
	a ditto	10	N. 30° W	38
Center of SW 1/4	a Beech	10	S. 71° E	4
	an Ash	40	N. 13 1/2° W	28 1/2

Thence to the top

S.W. cor. of Sec. Stone 20x20x16, an ash 30. S 83 1/2. 215 L.  
S 1/2 mi Stone 10x12 - by measurement on Section Line -  
240 Rods. from cent S S W 1/4 to Section Corner East =

215  
66  
-----  
149  
1290  
-----  
14190

Aricks - A survey for.  
1. Stone 8x12x16 White Walnut 6 S. 10 1/3 L,  
Elm 8 S. 59 1/2. 9 1/3 L.  
2. Stone 6x10x16 wit. Stone West 25 L.  
J.W. Trotter, Surveyor.

S.W. cor. of Sec. B. Walnut 8 S. 19 1/2 E. 98 L.  
Cen. N. of S. W. 1/4 Elm 40 S. 59 1/2 E. 93 1/3 L.

Phillip B. Herring & Sons Phillips - A survey for.  
Begin. at the S.W. cor. of the S. W. 1/4 Ch. N. 1/4 22-17-16.  
Thence North 16 rods to a stone 9x9x12 Maple S 32 1/2 E 53 1/2  
Thence East 10 rods to a stone 6x12x17,  
Thence South 16 rods to a stone 10x10x16,  
Thence West 10 rods to the beginning = 1a.  
J.W. Trotter, Co. Surv. 1898

Section 23 N. North Range N. East. Owners names & Cor. Witnesses



Witnesses	Dr.	Bearings	links
an Elm	10	N. 11 1/2° E	27
a Stone	---	N. 73 1/2° W	41
a Stone 15+24	---	N. 40° E	34
a Stone 10+18	---	N. 25 1/2° E	29 3/4
a Stone 14+22	---	N. 22 1/2° W	10 1/2
a Stone 15+20	---	N. 65 1/2° E	33
a Stone 11+16	---		

West 1/4 mile Post with the surface & agreeing, the best where is a

Witnesses	Dr.	Bearings	links
a Sugar	10	S. 40 1/4° W	72
a Birch	12	S. 23° W	110
a B. Walnut	12	N. 35° E	25
a W. Walnut	16	S. 60° E	53
a Hickory	20	S. 73 1/2° E	133
a Beech	20	S. 79 1/2° W	35 1/2
a B. Walnut	8	N. 45° W	63 1/2

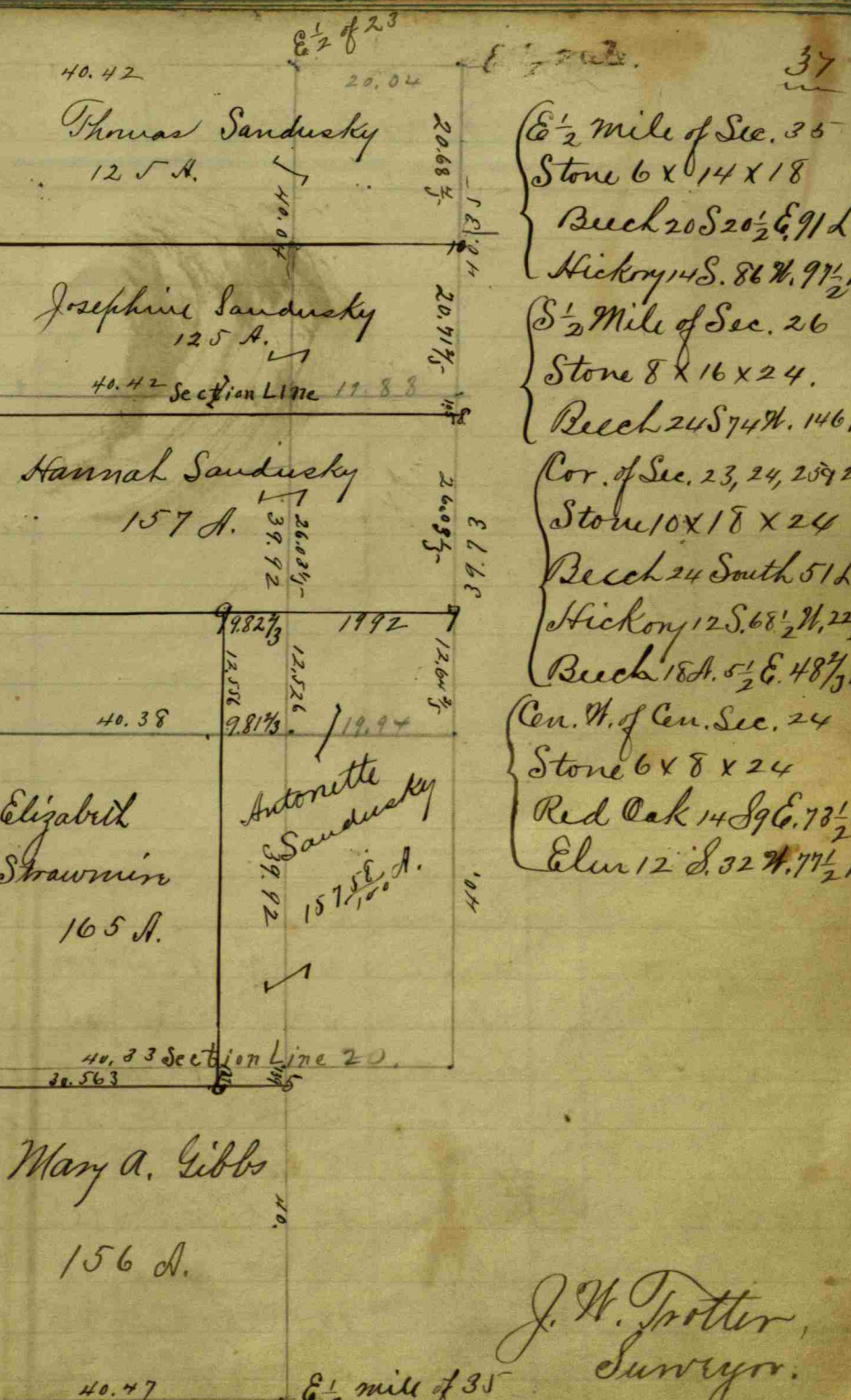
Witnesses	Dr.	Bearings	links
a Sugar	16	N. 32° W	42
a Beech	16	S. 1/2° E	47
a Beech	16	N. 24 1/2° E	137
a W. Oak	18	S. 37 1/2° E	38
a Beech	16	S. 41 1/2° W	39
a Poplar	24	N. 6° E	88
a B. Oak	10	S. 73 1/2° E	52
a Stone 10+15	---	N. 30 1/4° W	18
a W. Oak	40	S. 24 1/4° W	81
a Stone 10+12	---	S. 82 1/2° E	32

Witnesses	Dr.	Bearings	links
a Stone 12+18	---		
a Stone 12+16	---		
a Stone 14+16	---		
a Stone 16+21	---		
a Stone 10+20	---		

at the top for the ballance

Sandusky Partition

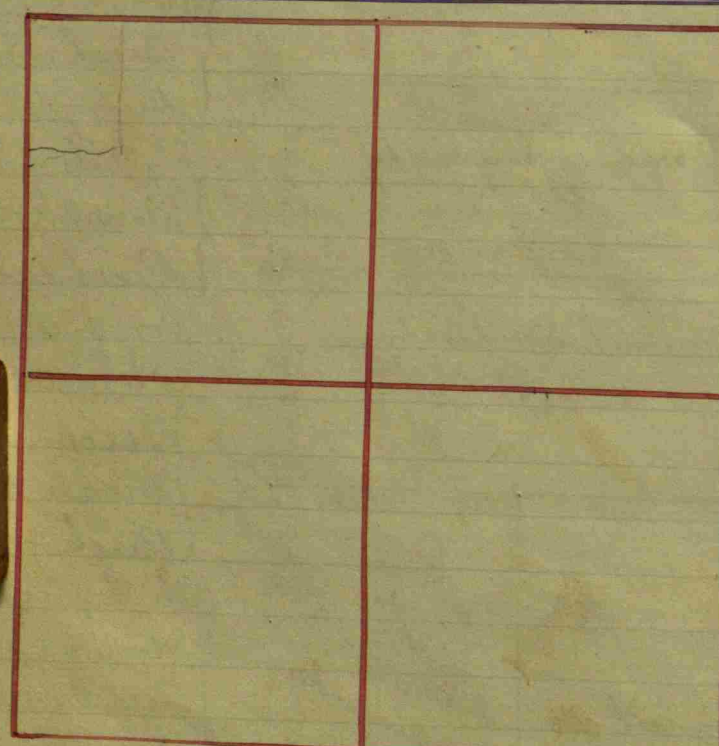
- Owners names & cor. witnesses Dr. Bearings links
- Sandusky Land Partition
- 1- Stone 116x16 Oak Stump 40 S. 84 1/2° W. 96 Links  
Hickory 18 S. 64 1/2° W. 95 "
  - 2- 140 1/2 ch. S. of N. 1/2 mile of Sec. 26  
Stone 8x16x32 Beech 20 N. 10° W. 137 L.  
Stone North 140 1/2 23 1/2 26
  - 3- Stone 8x16x26 which is 12.63 3/4 A. of Cen. of 26.  
Stone South 25 L.
  - 4- 1.32 chain S. of N. 1/2 mile of Sec. 35  
Stone 14x16x24 Oak 30 S. 4 W. 37 1/2 L.  
Beech N. 22 1/2° W. 35 1/2 L.
  - 5- 1.39 ch. S. of N. E. cor. of Sec. 35  
Stone 10x12x20 R. Oak N. 86 1/2° E. 61 L.
  - 6- 9.76 2/3 ch. W. of No. 5.  
Stone 6x12x24 W. Walnut 10 N. 85° W. 20 L.  
W. Oak 30 N. 1 1/2° E. 92 L.
  - 7- 12.64 3/8 ch. W. of S. E. cor. of N. 1/2 N. 1/4 Sec. 25  
Stone 8x12x20 Stone North 36 L.
  - 8- 1.05 1/2 ch. S. of N. E. cor. N. 1/2 N. 1/4 of Sec. 25.  
Stone 12x12x24 Ash 12 S. 20 1/2° E. 12 L.  
Do 6 S. 82 1/2° W. 24 L.
  - 9- 12.55 2/3 ch. N. and 9.82 2/3 ch. W. of E. mile of Sec. 26  
Stone 12x20 Stone North 30 Links.
  - 10- Stone 6x12x30 Triple Lim 24 N. 58 1/2° W. 17 "  
Elm 10 S. 22° E. 5 3/4 "



at the top for the ballance

J. W. Trotter, Surveyor.

Section 24 T7 North, Range N7 East. Owners names & cor



Witnesses	Dr.	Bearings	links
Center North of NE 1/4 = at the end a Stone 34+17 small	a Red oak	28 N. 25 1/2° W	53 3/4
Center East of NE 1/4 a Stone	a Pin Oak	5 N. 37° W	27
Center of NE 1/4 a Stone	a Red oak	6 N. 4 1/2° W	5
1/2 mile Post North Re a Stone 28+18 thin at top & mark X thus	a Beech	20 N. 56 1/2° W	55
Center of Section well found; a Stone 26+17 =	a Beech	20 South	10 1/2
	a Beech	22 S. 22 1/2° W	48
	a Beech	20	10 1/2
	a Ditto	18 N. 60 1/2° W	42
			Book C. p 126

Witnesses	Dr.	Bearings	links
SE Corner of Section 24 Relocated from old witnesses:	a B. Oak	50 S. 15° E	80
Center East of SE 1/4 a Stone 8+10	a H. Oak	40 N. 42° W	unn
East 1/2 mile Post a Stone	a Hickory	14 S. 59 1/2° E	24
Center S. of SE 1/4 a Stone 14+16	8+16 a B. Oak	8 N. 31 1/2° E	67
Center of SE 1/4 a Stone 16+30	a H. oak	30 S. 24° E	68
	an Elm	16 N. 57 1/2° W	48
	a Ditto	16 S. 40 1/2° W	41 1/2
			Book C. p 219

Witnesses	Dr.	Bearings	links
Center of NE 1/4 old Center East of NE 1/4	Witnesses good a Stone 14+10+9		
	Thus, old works, a Stone 10+9+8		
			Book C. p 315



Witnesses	Dr.	Bearings	links
East 1/2 mile Post trees; a good Stone	Relocated from stump of old witness an Ash	4 N. 61° E	30 1/2
South 1/2 mile Post Relocated a small stone	a Pin Oak	3 S. 38 1/2° E	35
Center South of SE 1/4 a good Stone	Relocated from stump of old witness an Elm	24 S. 66° E	32
Center East of Center a Stone	an Elm	18 S. 37 1/2° W	39
	a Beech	15 S. 42 1/4° E	15 1/2
	a Hickory	20 N. 32 1/2° E	38
	a Lynn	18 S. 51 1/2° W	22
	a Poplar	41 N. 72° E	71

Shance to the top

Ballance at the top

Owners names & cor. Witnesses Dr. Bearings links

Cent S S W 1/4 a Stone 10x12  
an Ash 15 S 26° W = 16 feet  
a Poplar 10 N 48° W = 16 "

East 1/2 mi Stone 7x9x12 8/20-1902  
By St. 5x9x9 S 47° W 26 1/2 L.  
For Hogan. St. 5x5x9 N 41 1/4° W 30 L.  
W. F. F. Co Sur.

Survey for Chas Jordan  
Mar 4-1904

Cur W S E q. N E q.  
Stone 5x5x16 W. 15 N 42 1/2° E 50

Cur S E N E q.  
Stone 5x12x16, Stone 5x8x12 East 38  
W F Franklin S. & Co.

N 1/2 mile stone 10x16x24 lowered to the depth of 8"  
Iron end post S. 1490° Ash 16" N 20° E  
37.75' grey granite stone 6x6x15 N 20° W  
40.02' grey granite stone 7x8x14  
S 35° W 20.30'  
Oct 3 1946 Ophir Claypool.

Section 25 N 17 North, Range N 1 East.

Owners names &c.	Cor	Witnesses	D.	Bearings	links
Center East of Sec. 25		a luffe tree	6	S. 36° W	60
a Stone 12+22		a Lynn	12	S. 81° W	75
Center West of Center		an Elm	24	East	39
a Stone 10+16		a Sugar	12	N. 45° E	27
Center of S 1/4		a W. Oak	50	N. 20 3/4° E	88 1/2
a small Stone		a Beech	16	S. 33 1/4° W	49
Center South of Center		a B. Walnut	4	S. 27° E	120 1/2
a Stone 12+18		a Apple tree	8	S. 52 1/2° E	63

Book C. p. 219

Section 25	Cor	Witnesses	D.	Bearings	links
Center North of Center in Sec. 25		an Elm	20	N. 27° W	29
Center of N 1/4		a B. Oak	30	S. 44° W	35
		a Beech	16	S. 80° E	42 1/2
		a ditto	20	S. 25 1/2° W	44

Book C. p. 222

Section 25	Cor	Witnesses	D.	Bearings	links
James Vandusky					
Thence South 120 Rods		an Elm	5	S. 76° E	12
Thence East across the NW corner of the 20 acres in NW corner of N 1/4 of Section 25		a B. Oak	50	S. 71° E	18
Thence South 89 by SW corner		a Beech	20	S. 4° W	6
Thence East 36 Rods		an Ash	18	S. 26° E	27
(Center E. of S 1/4 of the 20 acres)		a Beech	12	S. 78° W	27
Thence met 40 Rods.		a Beech	20	S. 68° W	15

Book C. p. 330



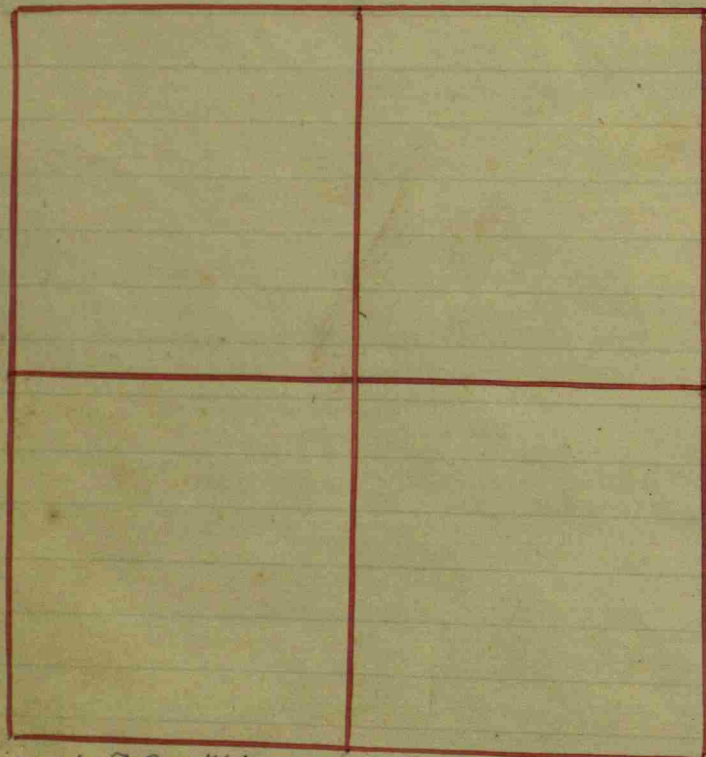
Owners names &c.	Cor	Witnesses	D.	Bearings	links
Collins & Mullen		a Survey for, in Section 25			
Center of N E 1/4		a Sycamore	3	S. 38° E	52
a good Round Boulder		The 1/2 mile this 1/4 is 12 feet short			
					Book C. p. 203
Eye mile of Sec. 25 measuring		Relocated by Reaming and			
a Stone 14+15		a Oak	30	S. 49° W	23 1/2
Center of Section		a an Ash	18	S. 5 1/2° E	50 1/2
a Stone 12+16		a Beech	14	S. 74 3/4° E	27 1/2
		a an Elm	16	S. 47 1/4° E	55

Thence to the top.

Ballance at the top

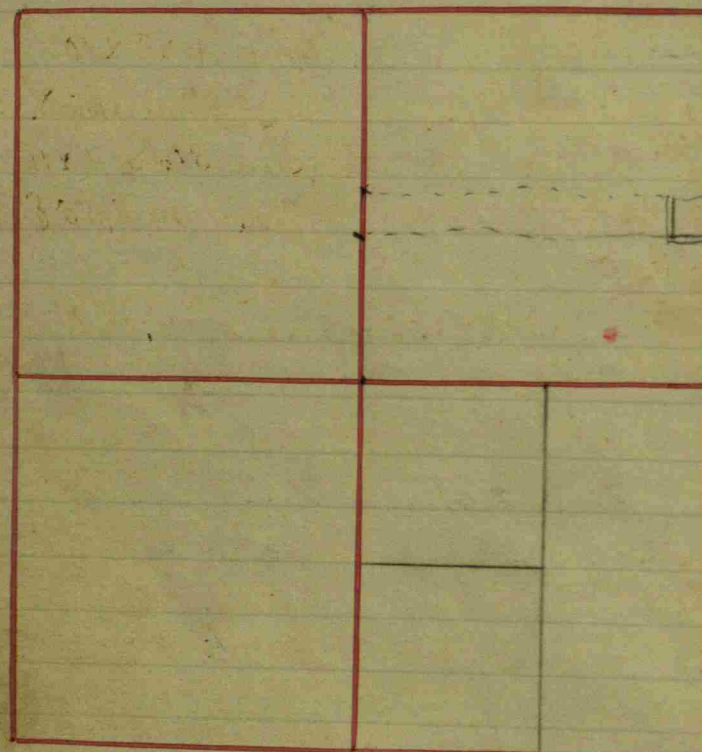
Owners names.	Cor	Witnesses	D.	Bearings	links
Steward:					
N 1/2 mile		relocated from an old witness			a stone 15x12
		Sugar	10	N 57 E	77
		Elm	20	S 22 W	45
Center N. N. W. 1/4		a Stone 12x8			
		a Walnut	6	S 17 E	98 1/2
		an oak	20	S 59 W	125 1/2
Center of Section		a Pin oak	10	N 65 E	88 1/2
		a Paw		N 12 E	30 1/2
Center S. N. W. 1/4		a Beech		N 2 W	54 1/2
a stone 10x2		do		S 54 W	80

Section 26 N7 North Range N1 East. Owners names & Co. Witnessed Dist. Bearings Links



Owners names & Co.	Witnessed	Dist.	Bearings	Links
E 1/2 mile Relocated	at B. Oak	24	S. 38° W	35
from original witness tree	at Beech	18	S. 14 3/4° E	35 1/2
Center of Sec. 26	at Beech	10	N. 77° W	42 3/4
at Stone 10+24	at Abitto	18	S. 55 1/4° W	57 1/2
			Book C. p	223

Section 27 T7 North, Range N. East. Owners names &c. Cor. Witnesses Dr. Bearings Links



Center East of N.E. 1/4 Sec. 27  
a Sugar 18 N. 66 1/2 W. 56  
a Stone 12 x 14  
a ditto 24 S. 88 1/2 E. 13 1/2  
Book C.P. 52

Center West of Center Sec. 27  
a Rough Boulder 17 x 12  
N.W. 1/4 Center North  
Stone 12 x 10 sloping to top  
(This corner is moved  
Center of S.W. 1/4, a small  
Stone, but no timber trees in reach)  
Book C.P. 105

Spec. made in Sec. 27  
a Stone 8 x 16  
Coted by Runnings & measuring:  
a Pin Oak 18 S. 30 1/2 E. 36  
a Oak stump 110 N. 67 1/2 W. 61

Center of Section 27  
Lapham's Post  
Center North of Center  
N.E. corner of Sec. 27  
Witness trees, Stone 11 x 8  
E 1/2 mile Post a stone

Center of Sec. 27  
a Hickory 18 N. 60 1/2 W. 41 1/2  
a Beech 15 N. 37 E. 8 1/2  
a Hickory 16 N. 17 E. 20  
a Hickory west 9  
Relocated from stump of one old  
stone a Beech 17 N. 80 E. 13  
a Sugar 12 S. 42 E. 15  
Center of Sec. 27  
the parties were not  
by Lapham's Posts and  
of Lapham's  
a Stone 9 x 15  
Center South of Center  
a Stone 10 x 16  
Center East of Center  
a Stone 11 x 17  
Center of S.E. 1/4 a Stone 8 x 16  
July 1859  
Book C.P. 114

thence to the top;

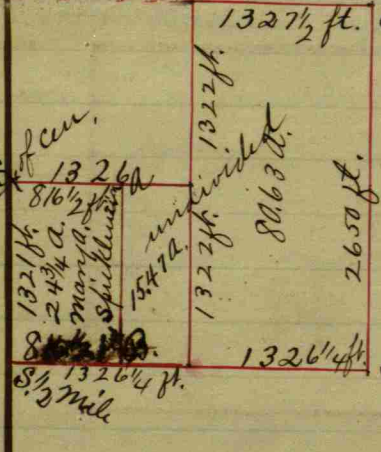
Owners names &c. Cor. Witnesses Dr. Bearings Links

a corner 27 R. Sec. The center E of the T 8 1/4  
a Stone a Bush 20 S 89 E 105 1/2  
Cen. S. of S. W. 1/4

Stone 9 x 11 x 17. int Stone 8 x 10 x 15 South 37 L.  
15.89 3/8 ch. N. of the Cen. of Sec. 27 is a  
Stone 8 x 8 x 10 Beech 12 ch. 57 1/2 W. 37 1/2 L.  
Oak A. 16 E. 56 L.  
15.89 3/8 ch. N. of S. W. cor. of E 1/2 N. W. 1/4 is a  
Stone 8 x 12 x 24 Stone A. 17 E. 16 1/2 L.  
Do. East 27 1/2 L.  
J.W. Trotter.  
S.H.C.

Milton Hendricks & Riley McCaslin survey for  
E 1/2 mile of Sec. 27 Water Buck 10 S 32 N. 32  
Stone Hickory 12 S 38 1/4 E 48 ft.  
27 Rds. South of Cen. E. of N. E. 1/4  
Stone 6 x 12 x 24 Stone East 20 ft.  
27 Rds. South of Cen. N. of Cen.  
Stone 8 x 10 x 18 Pin Oak 20 N. 63 1/2 E 21 1/4 ft.  
Stone North 20 ft.  
Nov. 15, 1898 - J.W. Trotter, surveyor of Hendricks County.

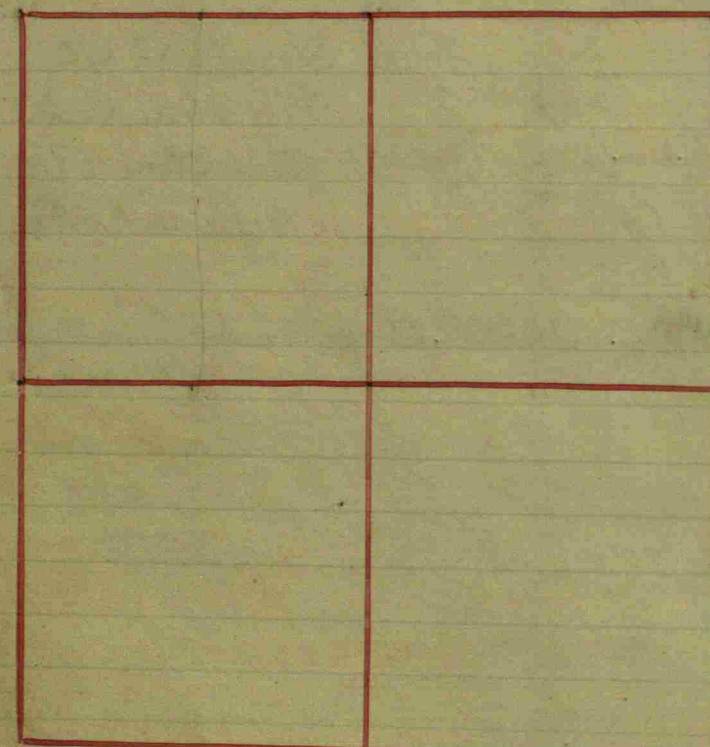
McCaslin Partition



132 1/2 ft. E 1/2 mile.  
A. Stone 6 x 8 x 10  
Wit. Stone South 17 1/4 ft.  
B. Blue Stone 6 x 16  
Maple 24 x 55 E 32 ft.  
S.E. cor. sec. 27 T. 17 N. R. 1 E.  
J.W. Trotter.

A & E cor Section Re-measured  
By Stone Post 128 x 7"

Section 28 T17 North, Range N1 East. Owners names & Co. Witnesses. Dist. Bearings links



Dist.	Bearings	links
Thence West 20 Poles on the line, a Stone	a Beech 10 S. 11° E 7 a Buckeye 8 N. 54° W 23	Book C. p. 59
Sec. 28		
Center of SE 1/4 of Sec. 28	a Burr Oak 40 S. 36 1/2° W 25	
a Stone 12 in. square, outside	a Ash 3 S. 57° E 6	
Center East of SE 1/4, a Stone 10	a Beech 7 S. 20° W 40	
1/2 mile Post East a Stone 20 x 10 flatish square		Book C. p. 103
Sec. 28		
Center South of NW 1/4 of SW 1/4 of Sec. 28: a Stone 10 x 17	a Beech 18 S. 25° E 58 a Ditto 16 S. 44 3/4° W 66	
Center North of NW 1/4 of SW 1/4 a Stone 8 x 10	a Beech 14 West 6 3/4 a Ditto 10 S. 58° E 31 1/2	Book C. p. 153
Sec. 28		
40 Rods 3 1/2 links North is a Stone 9 x 8 7 and 3 1/2 links North of South a Stone 14 x 9 6	from center South of SE 1/4 of Sec. 28 a Cherry 10 S. 56° E 11 1/2 links across the 80 to 40 Rods 1/2 mile Post. Book C. p. 312	
Cor. W. of Cor. Stone promised	W. Elm 24 N. 85° E 5 1/2	line cut.
Cor. N. W 1/4 Stone 10 x 14 x 20.	B. Walnut 4 N. 19° W 94 Beech 18 N. 50° E 261	
Cor. N. of Cor. Stone promised	+ 11 20 N. 13° E 205	

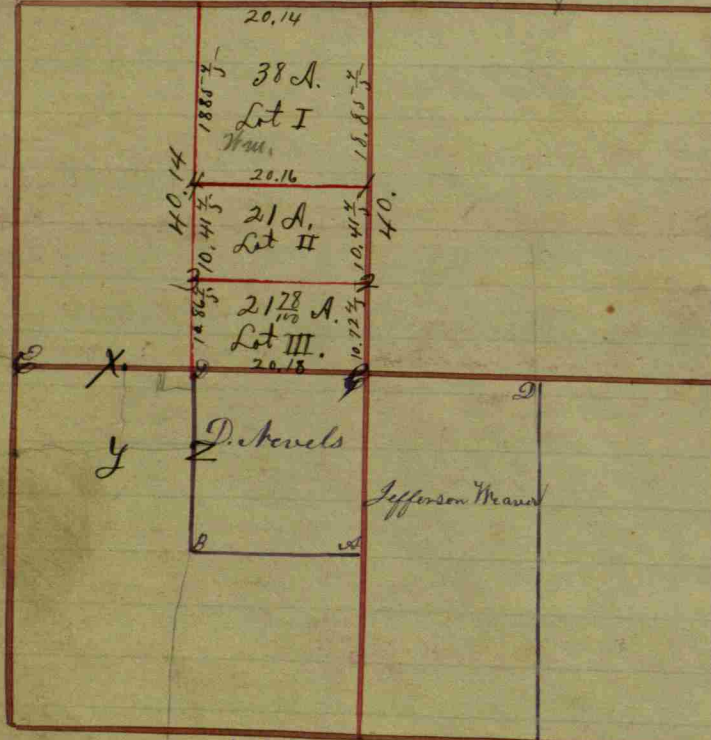
Dist.	Bearings	links
SW corner of Section 28	a Stone 12 x 14	
West 1/2 mile Post	a Stone 24 x 18	
North 1/2 mile Post	a Stone; and a <sup>an ash</sup> Oak instead of	
Center of Section 28	a Beech 10 N. 2 1/2° E 8 1/2	
a Stone 15 x 12	a Ditto 15 S. 12° W 24	
South 1/2 mile Post a Stone 20 x 18:	20 Poles East and	
40 Poles N. of SW cor. of the Sec. a Stone	a Beech 18 N. 16° E 14 a Hickory 20 S. 35° W 20	
Thence North 40 Poles to a Stone	a Beech 12 N. 78 1/2° E 23 a Ash 10 S. 66° W 1 1/2	
	Thence to the top	

Owners names & Co. Witnesses. Dist. Bearings links

Cor. N. cor Stone 14 x 14 x 12 no witnesses Oct. 18 - 99



Section 29 T7 North, Range N1 East. Owners names & Cor. Witnesses Dr. Bearings links



Owners names & Cor.	Witnesses	Dr.	Bearings	links
Jefferson Weaver + N.E. corner	The W.P. of the + Hickory	13	S. 57° W	33
	+ Beech	12	N. 23° W	35
				Book B. p. 293
Sections 29 + 30 T7 N. 1 E. Center on W.P. mile between Secs.	E a Beech + a R. Oak	8 40	S. 42° W S. 50° E	20 16
				Book C. p. 35
5 Acres out of the S.E. corner + N West corner a Stone — + S West corner a Stone	of Section 29: a Beech + a Ditto + a Stump	40 Rods 15 10 18	40 Rods Sand S. 76° E N. 1/2 E East	20 Rods 20 10 24
				Book C. p. 37

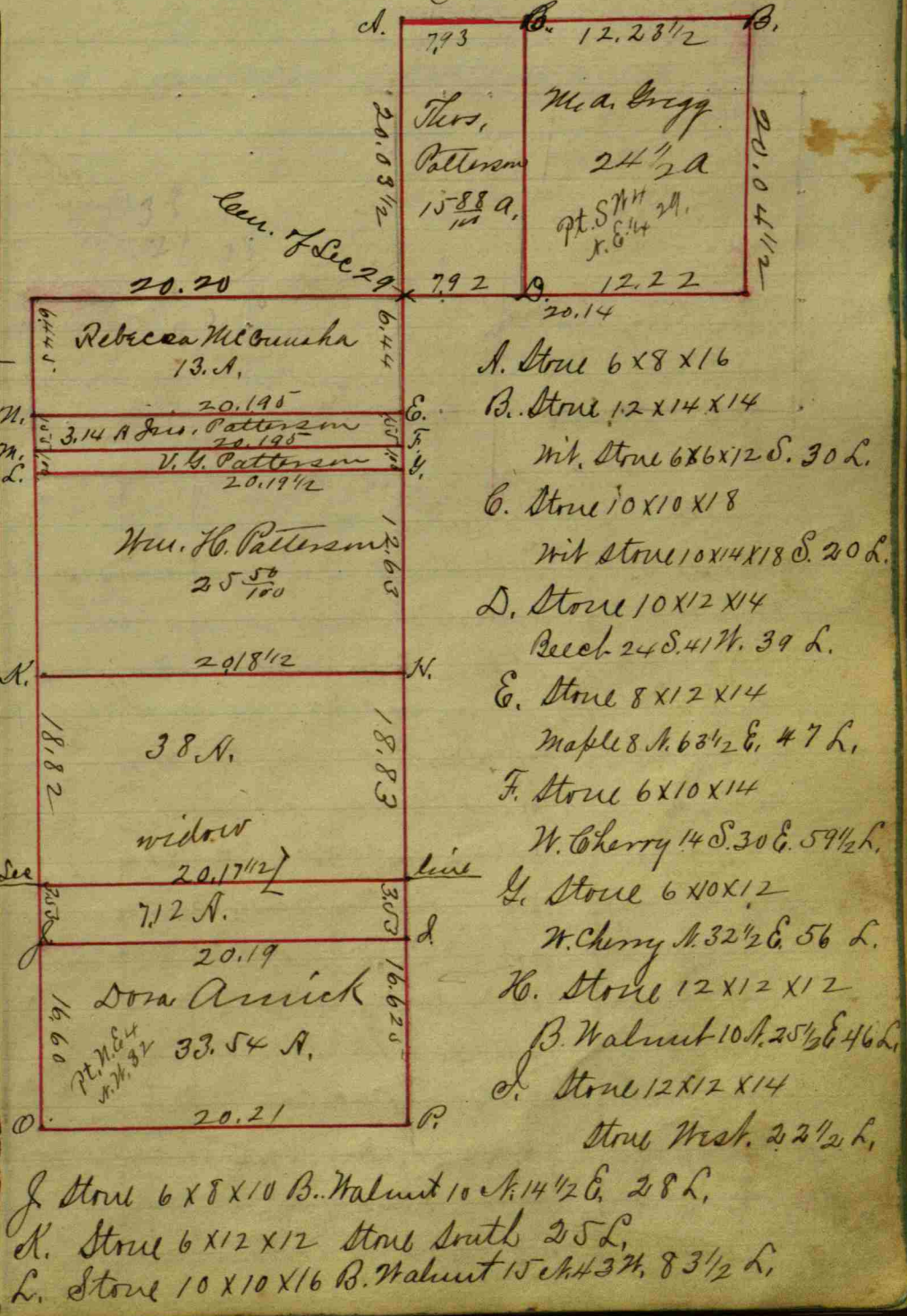
Owners names & Cor.	Witnesses	Dr.	Bearings	links
D. Bevels	A a W. Oak	30	S. 3° W	12
	+ a W. Ash	24	N. 84° E	26
	B a W. Ash	8	N. 36° W	7
	+ a Beech	13	S. 53° W	29
	C a Hickory	15	S. 80° E	18
	+ a Buckeye	7	S. 41° W	28
	D a Beech	4	N. 89° E	21
	+ a Ditto	12	S. 17° W	24
				Book B. p. 293

Center East of Center, Sec. 29 a Stone 16 + 10 + 8	a Elm	40	N. 38° E	67 1/4
	+ an Ash	18	N. 50° E	33
N.E. corner of Sec. 29: a Stone 18 + 15 + 10	a W. Oak	30	N. 30° E	57 1/2
	(from one old W.P. stump found)			
Center North of N.E. 1/4 a Stone 20 + 10 + 8	a W. Oak	24	S. 34° E	151
	+ a Hickory	15	S. 15° W	108 1/2
				Book C. p. 242

Owners names & Cor. Witnesses Dr. Bearings links  
40 R. E of the center S & E 1/4 a Stone 16 x 20  
a B. Walnut 6 x 78 E 164  
S.H. Lot. A part of NW 1/4 of Sec. 29 T7 N. R. 1 E.  
Beginning at N.E. corner of ~~the~~ above tract  
Thence W. 12 R. Thence S. 12 R. Thence E. 12. Thence  
N 12 R. to place of Beginning. containing 144 5/8 A.

Kennedy Land Partition - May 1893  
Division of the East half of S. 1/4 as shown on the plat.  
S.E. cor. Lot I. 1 Stone 6 x 10 x 12 Stone 12 x 12 West 25 L,  
Do. South 11 4/5 "  
S.E. cor. Lot II. 2 Stone 6 x 10 x 16 Stone 12 x 10 East 21 "  
Do 10 x 14 West 25 "  
S.W. cor. Lot II. 3 Stone 8 x 25 Stone South 30 "  
S.W. cor. Lot I. 4 Stone 12 x 20 Stone North 25 "

E.M. Hearer, Maria Johnson & J.W. Fortler, commissioners.  
M. - Stone 10 x 14 x 18 B. Walnut 15 S. 56 1/2 W. 68 L,  
N. - Stone 6 x 8 x 12 with Stone 6 x 10 x 12 South 25 L,  
O. - Stone 10 x 10 x 12 Sycamore 48 S. 29 W. 77 1/2 L,  
P. - Stone 8 x 16 x 24 Stone cor. North 73 1/2 L  
J.W. Fortler, Surveyor

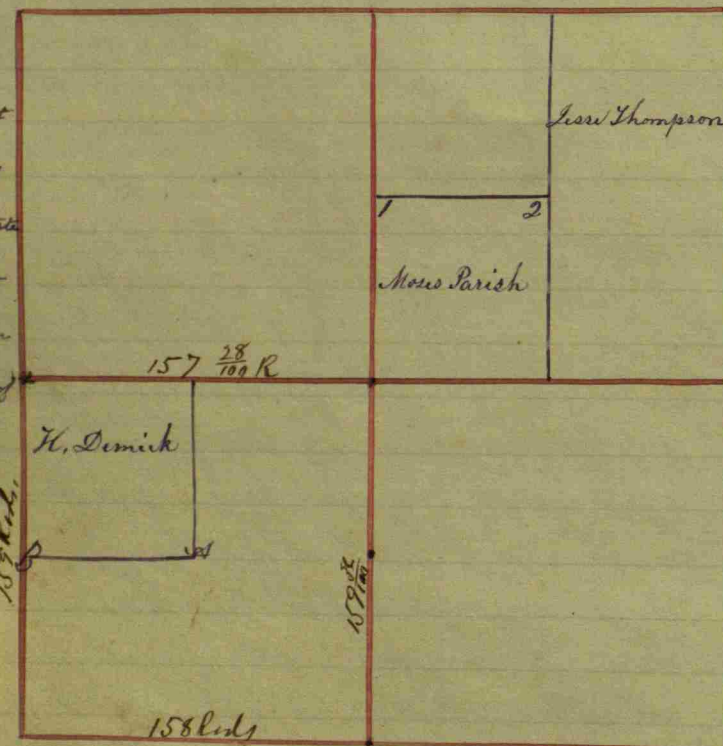


A. Stone 6 x 8 x 16  
B. Stone 12 x 14 x 14  
with Stone 6 x 6 x 12 S. 30 L.  
C. Stone 10 x 10 x 18  
with Stone 10 x 14 x 18 S. 20 L.  
D. Stone 10 x 12 x 14  
Beech 24 S. 41 W. 39 L.  
E. Stone 8 x 12 x 14  
Maple 8 A. 63 1/2 E. 47 L.  
F. Stone 6 x 10 x 14  
W. Cherry 14 S. 30 E. 59 1/2 L.  
G. Stone 6 x 10 x 12  
W. Cherry 14 S. 32 1/2 E. 56 L.  
H. Stone 12 x 12 x 12  
B. Walnut 10 A. 25 1/2 E. 46 L.  
I. Stone 12 x 12 x 14  
Stone West. 23 1/2 L.  
J. Stone 6 x 8 x 10 B. Walnut 10 A. 14 1/2 E. 28 L.  
K. Stone 6 x 12 x 12 Stone South 25 L.  
L. Stone 10 x 10 x 16 B. Walnut 15 A. 43 W. 83 1/2 L.



Section 30 T7 North Range N1 East. Owners names & Co. Witnesses Dr. Bearings. Links

Note: The plat & description of this Matters Estate including post of this decl. is in decl. 27, p. 50 of this Book.



Owners names & Co.	Witnesses	Dr.	Bearings	Links
Jesse Thompson The	East 1/4 of the NE 1/4 of Section 30			
a Beech	13	S. 30° W	23	
& an Ash	10	N. 75° W	26	
Note: (nothing more diff. mite or plain)				
Thompson & Parish's	a Pin oak	—	S. 34° E	21
C. B. & J. (not on plat)	a Sugar	19	N. 17° E	18
	a Pin oak	22	S. 52° E	10
	a Blundersh	9	S. 35° W	16
	a Hickory	16	N. 10° W	33
	& a Ditto	13	S. 84° W	14

Note: I do not know to what plants these belong but place them as I have found them.

William Crab The	East 1/4 of NE 1/4 of Sec. 30: And here I see the same as Thompson's			
& S W corner	a P. oak	22	N. 25° E	13
	an Ash	9	N. 45° W	25 1/2
Phillip Matters the	at Hickory	15	N. 11° E	26
NW 1/4 of SE 1/4 & NW corner	& an Ash	7	S. 39° E	50
Moses Parish's The	S W 1/4 of the NE 1/4: Sec. 30			
& NW corner	1 a Poplar	30	N. 41° E	60
& NE corner	2 a Sugar	18	N. 69° W	38
	& a Hickory	17	S. 37° W	29
Phillip Matters The	North 1/2 of the SE 1/4, undivided, Sec. 30			
	a Sugar	12	S. 86° E	9
	& a Hickory	5	S. 11° E	27
H. Demick The	NW 1/4 of the SW 1/4: undivided, Sec. 30			
	a an Elm	22	S. 17° W	24
	& a Hickory	5	N. 17° E	25
	B a W. oak	20	N. 32° E	14 1/2
Stephen Spelmeier				
	A a Hickory	5	N. 34° E	12
	& an Ironwood	9	N. 71° W	30
The foregoing is all	B a Sugar	10	N. 59° W	14
Copied from Book B, p. 293	& a Beech	16	S. 48° E	11
I will require much care by Surveyors; as the whole is mixed & very indefinite	C a Beech	17	S. 39° W	15
	& a Ditto	13	N. 21° W	23

Owners names & Co.	Witnesses	Dr.	Bearings	Links
West 1/2 mile Post of Section 30:	an Elm	5	N. 52° E	25
Center of the Section	& a Hickory	3	S. 9 1/2° W	15
a Stone 20+12	a Beech	14	S. 62 1/2° E	70
Center West of SE 1/4	& an Ash	14	S. 18 1/2° E	90 1/2
a Stone 8+14	a W. Ash	14	S. 5 1/2° E	55 1/2
Center South of NE 1/4	& a Walnut	4	S. 9° E	51 1/4
a Stone 14+20	a W. Oak	22	N. 33 1/4° E	14
	& a Walnut	3	S. 42° E	62

Note: The description & Plat of the Matters Estate under decl. 29 - Page 50

Owners names & Co.	Witnesses	Dr.	Bearings	Links
along foot E. of H. L. Matters	a Beech	24	N. 67° W	46
a Stone 12+10+9	to opposite Huff's Corner			
Thence North nearly 24 Rods	a B. Walnut	10	N. 65 1/2° W	69
a Stone 30+15+12	& an Ash	28	S. 62 1/2° W	35 1/2
Thence 25 Rods to =	a R. Elm	10	S. 30 1/2° W	93
a Stone 28+18+10	± 14 links to the corner:			
Thence North 9 Rods	a Cherry	10	S. 25° W	129
Center West of Center	& a Ditto	12	S. 49 1/2° W	158
a Stone 18+14+10	Book C. p. 335			

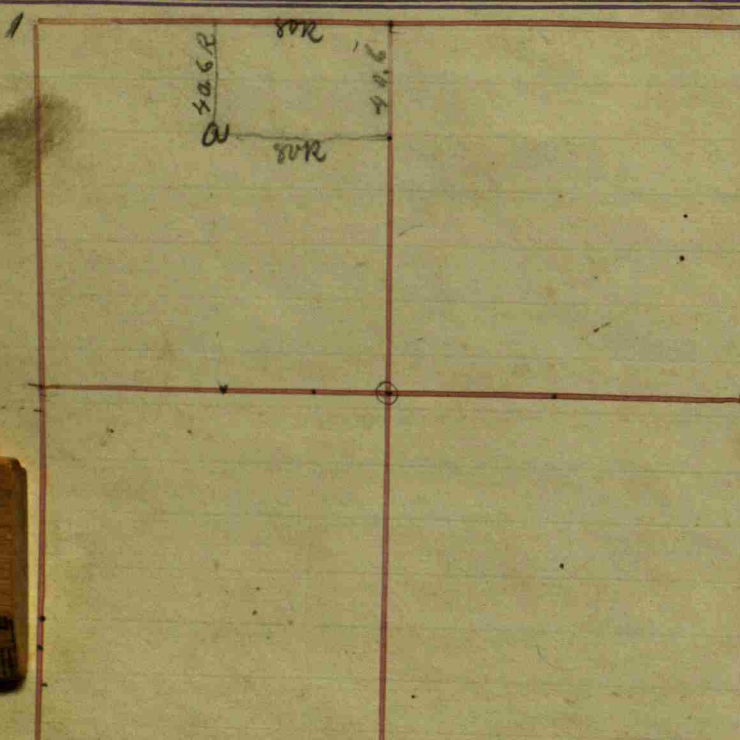
Sec. 30: Widow Matters  
On account of some dissatisfaction the Court granted a rehearing, & other upon actual view of Partition, without making but one lot. Whereas there were forth on page 91+92

Dower and Partition:  
Commissioners having been appointed the premises, they affirmed the first the alteration of a Post or line except out of the West 40 or part West? these lots, all of which is fully set of Book C. Book C. p. 127

Section 30, 17-18	Witnesses	Dr.	Bearings	Links
6 Rods East of Center				
a Stone 24+14+12				
Stump of one of Huff's				
80 R. ± 2 links, 53 Rods				
a Stone 20+12+10				
Center S. of NW 1/4 a Stone				
157 10+8 a Oak				

East of Section Center a about 6 links North of where a Witnesses indicated: Thence South ± 15 links East of a corner set by Huff: South line of NW 1/4 29 links over measures a Sugar 15 S. 55° W 71 1/2 56° E 131 then to the top

Section 31 T7 North, Range N1 East. Owners names &c. Cor. Witnesses Dr. Bearings Links



Owners names &c.	Cor.	Witnesses	Dr.	Bearings	Links
a Stone 24+18		Jan Elm	24	N. 24 1/2° E	71
Center of SE 1/4		a B. Ash	30	S. 4 1/2° W	2 1/2
a Stone 10+12		a Ironwood	8	N. 20° W	10 1/2
Center North of SW 1/4		a Sugar	14	S. 5 5/8° W	11
a Stone 10x12. (69 7/100) + (79 7/100)		a Ditto	24	N. 12 1/2° E	59 1/2
Center South of SW 1/4		a B. Ash	18	N. 16° E	4
		a Beech	18	S. 48 1/2° E	24

Sec. 31.  
Newman Lot  
Beginning 16 Poles  
Corner; thence East  
thence West 120 feet;  
North of Pittsboro;  
+ 14 links East of the Township  
120 feet to the corner of the tract  
thence S. 17° W 70 feet;  
Book C. p. 50

Owners names &c.	Cor.	Witnesses	Dr.	Bearings	Links
Section 31: West 1/2 full 1/2 mile, where Relocated Stone 10412.		a Beech	10	N. 11° E	23 1/2
		a Ditto	12	S. 44 1/2° E	34 1/2
North 1/2 mile Post a stone of one 1/2 Relocated from stump		a Walnut	6	S. 16 1/2° E	20 1/2
Center of the Sec.		a P. Oak	6	S. 50° W	24
		a W. Oak	24	N. 50° E	28
		Jan Elm	26	S. 3° E	17
Center East of Center a Stone 14x20		a Beech	10	S. 64° W	13
Center of SE 1/4		a P. Oak	30	N. 32° W	12 1/2
		a P. Oak	24	N. 20° W	113

Sec. 31  
Oliver Wells The  
with some gain off  
SE corner of the  
20 acre Lot  
Dr. Hoadley the  
other 60: SW corner  
North West corner of Sec. 31. a P. Oak Stump 36 inch  
N 65° E  
Book C. p. 98  
64

a 40% R. S. of Cent. N. N. 1/4 a small stone Book S 69 E 24 E

Owners names &c.	Cor.	Witnesses	Dr.	Bearings	Links
E 1/2 of the SW 1/4 of Section 31: The 80 being divided N. 24 E		a Sugar	16	N. 66 1/2° E	39
Center South		a Beech	14	N. 51 3/4° W	62 1/2
Center on North of the same		a Hickory	14	S. 60° W	25
		a Beech	16	S. 73° E	24

Sec. 31.  
Beginning at the  
(Pittsboro): thence  
72 Poles + 17 links  
to the West 1/2 mile  
Post; thence South with the  
dian line 117  
the aforesaid mile  
links to the Beg  
inning; Estimated to contain  
Book C. p. 107  
Book C. p. 120

Sec. 31  
Company Law Mill Lot in Pittsboro:  
Beginning North  
East 25 poles + 22 links  
thence S. 24° E 24 poles + 21 links  
thence S. 17° E 17 poles + 15 links  
thence N. 79° W 29 poles + 11 links  
thence S. 79° E 29 poles + 6 links  
where  
thence South 17 poles + 18 links  
Beginning; Estimated to contain 3 acres;  
July 3rd 1852  
E. Huff S. H. G.

Sections 31 & 32 T. 17 N. R. N1 East. no witnesses named, hence Partition of the Estate of E. Warrick (deceased)

The E 1/2 of the NE 1/4 of Sec. 31.  
And so much of the 1/2 of NE 1/4 same Sec. as lies East of West Fork of  
White Lick in said Section: Estimated at 33 1/2 acres by former  
Surveyors; NW 1/4 of NW 1/4 of Sec. 32 + 6 1/2 acres, NW corner of  
SW 1/4 of NW 1/4 of same Section:

Midway Point Begins 60 Rods North + 24.97 Rods East of the  
East 1/2 mile Post of Section 31, and runs west with Sec. bearing  
about 139 Rods, or to the West fork of White Lick Creek in the SW 1/4  
of NE 1/4 of Sec. 31; thence along said Creek to South line of said  
NE 1/4; thence along said line to East 1/2 mile Post of Section  
31 as above; thence North along the East line of same Section 47  
Rods; thence N. 62 1/2° E to the Beginning; Estimated to contain  
43 1/2 acres;

To C. H. Warrick a Strip off of the East side of NW 1/4 of NW 1/4  
of Section 32. 74 Rods wide at Each end; also the following:  
Commencing 6 Rods East of NW corner of SW 1/4 of NW 1/4 of Sec. 32,  
and running East with Section bearing 35 Rods + 10 1/2 links;  
thence S. 10° E 15 Rods; thence S. 62 1/2° W 16 Rods; thence West  
with Section bearing to West line of Sec. 32; thence North on said  
line to the Beginning;

To Mary J. Warrick. A Strip 100 Rods long North-South  
+ 21.87 Rods wide East-West;

Beginning 6 Rods East of NE corner of Section 31, and  
Running thence West with Section bearing 21.87 Rods  
over on next page

66) 7193 10.90  
593 48.68  
117.4  
43.6  
161.0 R.

a 40% R. S. of Cent. N. N. 1/4 a small stone Book S 69 E 24 E

Section 31 T17 North, Range 1 East. Continuation of

Thence South with Section bearing 100 Rods; Thence East with Section bearing 21.87 Rods; Thence North with Section bearing to the Beginning; Containing 13 2/3 acres;

To Harriet Warrick as follows. (to wit)

A Strip lying in NE 1/4 of Section 31. East of and adjoining that, set off to Mary J. Warrick, and of same dimensions & bearings, being parallel to, and included in the same parallels;

To Madona A Warrick; A Strip lying in NE 1/4 of Sec. 31. West of & adjoining set apart to Harriet Warrick; it being of same dimensions & bearings, & being parallel to, & included in the same parallels;

To James Warrick, as follows (to wit)

Beginning 60 Rods West with section bearing of NE corner of Sec. 31, & thence West with same bearing to middle of West Port of White Lick Creek in same section; Thence along the same to a point 100 Rods South of North line of the same Section; Thence East with Section bearing about 24 Rods, or to the SW corner of the tract set apart to Madona A Warrick as above; Thence North to Sec. line and place of Beginning;

Book C. p 195

Note, The Corners of each tract set with Boulder Rocks.

Section 31 T17 North, Range 1 East. Continued

Owners names, Co's, Distances, Or, Bearings, links.

A Survey Made for Dan. T. 1834, Beginning at the center of the crossing of the S. R. W. R. R. and the Lebanon State Road. Thence East with the R. R. 250 feet; Thence North with the bearing of the said Lebanon Road, 410 feet; Thence S 87° W to the center of said Lebanon Road, 350 feet to a corner Stone 10x4x4, between a strip of Rail Road Iron, East on R.R. line 20 feet or 30 links; Thence South with said Lebanon Road to the beginning; This Survey is made by a correction of Dub. which was made & corrected by J. W. Morgan, in accordance with the understanding of all the parties;

Jones & Whitesell, Brick yard Lot, begins 30 feet North 8° E. of the last described corner, in the center of the Lebanon State Road; Thence N 8° E with the center of said Road 15 Rods & 3 links; Thence North 87° East, 10 Rods & 43 links; Thence S 19 1/2 W 16 Rods & 0 links; Thence S 87 W 10 Rods to the place of beginning; Estimated to contain one acre be the same more or less.

Thorp's Lot, Begins 16 Rods & 8 Links North + East with the Lebanon Road in the center thereof; Thence with the bearing of said

next page

Road, Seven rods; Thence N 87° E, 11 Rods and 20 links; Thence S 19 W 7 Rods; Thence S 87 W 11 R & 20 links to the place of beginning Estimated to contain 1/2 acre.

Griffiths Lot, Begins 30 Links North & 10 Rods N 87 E. from the last described corner, Thence N 87 E, 11 Rods & 2 links; Thence N 19 E, 16 Rods; Thence S 87 W 11 R & 2 links; to Jones & Whitesell cor. Thence S 19 W with said Jones & Whitesell cor. to the place of beginning Estimated to contain one acre.

Jacob Bigg's Lot, Begins 87 1/2 Rods West from the center of Sec. 31, Thence West 6 1/2 Rods; Thence South 16 W with the center of Road, 10 R & 15 L; Thence East 10 Rods Thence North 10 Rods to the place of beginning. Estimated to contain one half acre. Also 1/2 a lying E. of last, tract 10 Rods N & S by 8 E & W.

Henry Hook, beginning at the Township cor. of Town 16 & 17 on the meridian line; Thence North 8 R & 6 links; Thence N 86 3/4 E, 11 R & 11 L Thence S 12 1/2 W 8 R & 6 links to the Town line Thence West to the place of beginning;

See page 12

A Lot off the S. side of last described lot as follows - to wit Beginning 48 Links North of the Township cor. on the meridian; Thence S 82 1/2 E. to the intersection of the Town line Thence West with Town line to the place of beginning, Estimated to contain 12 Rods more or less -

Fagers Lot, Begins in the center of Lebanon Road 23 R & 13 Links from the last described Stone N 12 1/2 E. Thence N 87 E, 11 R & 20 L, Thence N 14 E 14 R & 17 L; Thence S 87 W 10 R & 19 L; Thence S 12 1/2 W 14 R & 19 L to the place of being one acre -

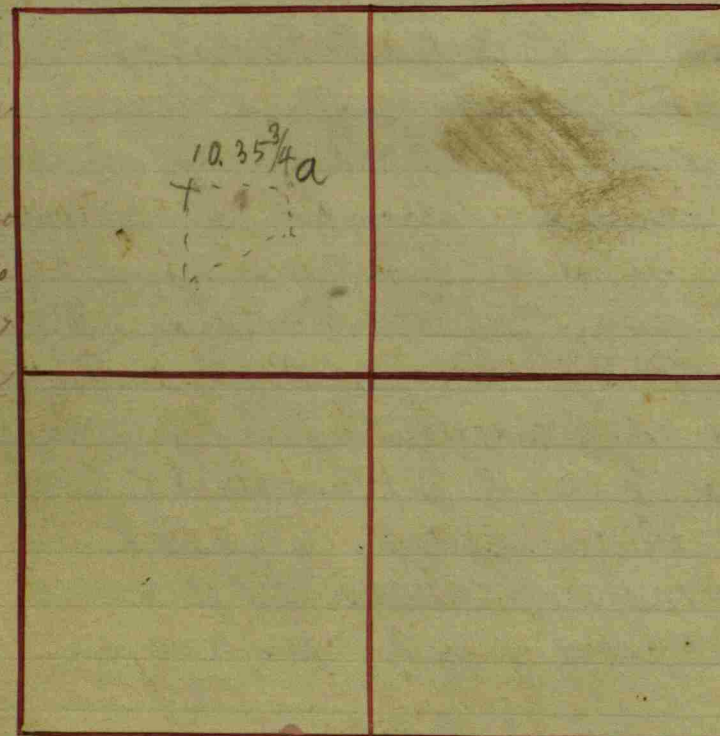
Ludlows, 7/8 acre Lot, Begins N 12 1/2 E from the last described Stone Dist 37 R & 2 links; Thence N 87 E 10, 96 R, N 14 E, 14 R & S 87 W 10, 96 R; S 12 1/2 W 14 R to the beginning

Thomas' Lot 51 R & 2 L N. E. from last described cor. in the center of Lebanon Road, S line 10, 96 R, & line 10, 4 R; E. 16. W 16 1/4 R Bearing same as above.

Ludlows 1/4 a lot, 67 R & 8 L from cor. same description as above 4 R N & S, 10, 4 R E & W See Page 80

Section 32 1/4 North, Range 17 East.

Notes: The Har- rick Estate including a part of this section is in Sec. 31, p. 57 of this book



June 18th with Section line 33 Poles to the Begin- ning;

John Money John Toul (Decd) Beginning on the And from the where is

Administrator on the Estate of For Mill Purposes; line dividing the NE 1/4 (but about 1/2 mile) S. corner of said 1/4 46 Poles to a Sugar 18 N. 6° W 8

Thence N. 43 1/2° W 26 poles; Thence N 50° W 10 poles; Thence N. 3° W 3 Poles; Thence 18 Poles; Thence S. 27° W

16 Poles; Thence N. 20 1/2° W E 4 Poles; Thence N. 8° W 22 Poles; Thence N. 77° W 10 Poles; Thence S. 72 1/2° W 14 Poles; Thence S. 35° W 33 1/2 Poles;

Owners names &c. Cor. Witnesses. Dr. Bearings. Links Abraham Spedemire Center of the S W 1/4 of the of S E 1/4 of 1/4; Thence 10 3/4 links; where Thence S. 10° E 15 Poles Thence S. 62 1/2° W 46 Poles

to the West Boundary with said line 42 Lot; Thence N. 84° E North boundary line line 68 Poles to the South with the East ning; Containing 18 South 1/2 mile Post a Stone 26 + 4 + 3

of S E 1/4 1/4 of land; Thence 13 Poles; N. 6° W 12 Poles to the of S E 1/2 1/4; Thence East with said N. E corner of said S E 1/2 1/4; Thence boundary line 114 to the Begin ning; 3 Poles Book B. p 294

Copied as found in the

present

Sec. 32 Relocated. Stamps of both Witnesses a B. oak 36 S. 29° E 97 a W. Oak 24 S. 11° W 55

Book B. p. 294

Owners names &c. Cor. Witnesses. Dr. Bearings. Links Center of Sec. 32 (by Grogg

Center West of Center a Stone 5 + 11 Center South of S W 1/4 a Stone 26 + 18 Center of S W 1/4 a Stone 11 + 9

G. W. Wells & Made Dec. 31st 1866. Sundays Notice given, Center N. of N E 1/4 a Rock, large Center of N E 1/4 a Rock, large Center East of N E 1/4 a Rock, large

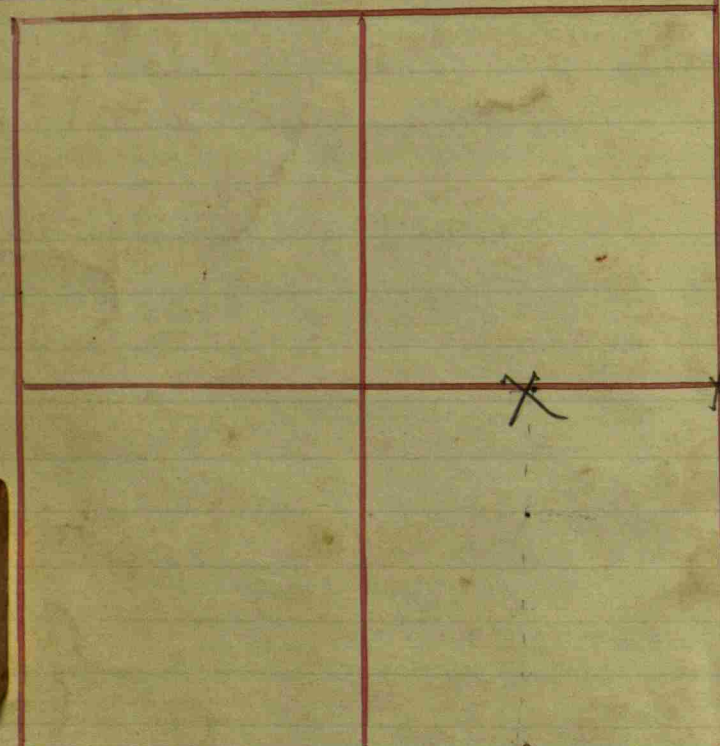
Center on East side of S E 1/4 of Section 32 Center of Section Thence N. 43 1/2° W 10 Thence N. 50° E 4 poles Sec page 49

Owners names &c. Cor. Witnesses. Dr. Bearings. Links N. 5° W 10 Poles; Thence N. 12 1/2° W 20 Poles; Thence N. 3° W 1 Pole; Thence S. 72 1/2° W 18 Poles; Thence S. 27° W 14 Poles; Thence S. 35° W 3 1/2 Poles; Thence

Book C. p. 249

Thence N. 20.90 chains to a Stone 6 x 9 x 10 not witnessed Thence West 5.74 chains to a Stone not witnessed Thence S. to beginning = 12 acres. Anna Faught's part. Beginning at S. E. cor. Lewis Lot and Thence East 1.19 2/3 chains to a stone 6 x 9 x 11 S. Ash 12 N. 72 E 6 3/4 ft, Thence N. 20.90 chains to a Stone 8 x 8 x 12 not witnessed. Thence N. 1.19 2/3 chains to Lewis' N. E. corner. Thence S. 20.90 " to beginning = 2 1/2 acres. Ella Myers' part. Beginning at Anna Faught's S. E. cor. Thence East 1.19 2/3 chains to a Stone 6 x 12 x 14 S. Ash 12 N. 43 3/4 W. 28 3/4 ft, (See Page 83) Hickory N. 41 1/2 E. 38 1/2 ft.

Section 33 North Range No. 1 East. Owners names & cor. Witnesses Dr. Bearings links



West 1/2 mile Post Sec. 33  
 or roots of old witness trees  
 A Tomb Stone basement  
 = 24 + 16 + 10  
 Seminary in NW 1/4 of  
 Thence N. 23 1/2° E 15 Poles  
 15 + 4 and  
 Thence N. 88° E 4 Poles  
 N. 44° E 1 Pole + 14 links  
 8 Poles + 20 links  
 10 Poles, a Stone 9 + 8 + 6  
 to the Beginning:

Sec. 33  
 Center South of SE 1/4  
 a Stone 26 + 14 + 12  
 John Simonds NW 1/4  
 Corners a Stone 18 + 15 + 9  
 Book C. p. 273

July 33  
 James M. Caslin  
 Center South of SE 1/4  
 last year) by measuring  
 had set the corner  
 dividing; which said  
 a corner set S. 86° E  
 19 1/2 links of Dr from the Stone.  
 Thence to top page:

Owners names & cor.	Witnesses	Dr.	Bearings	Links
Center North of NE 1/4 of Section 33.	a R. Oak	12	S. 46 1/2° E	21
Center of NE 1/4	a Elm	30	N. 46° E	68
Cor. by agreement:	a Beech	9	N. 70 1/2° W	16
	a Ironwood	6	S. 30° E	12
			Book C. p. 59	
Center South of SE 1/4 of Section 33.	a B. Oak	5	N. 23 1/2° W	59
	a Hickory	16	N. 14 1/2° E	83 1/2
			Book C. p. 174	

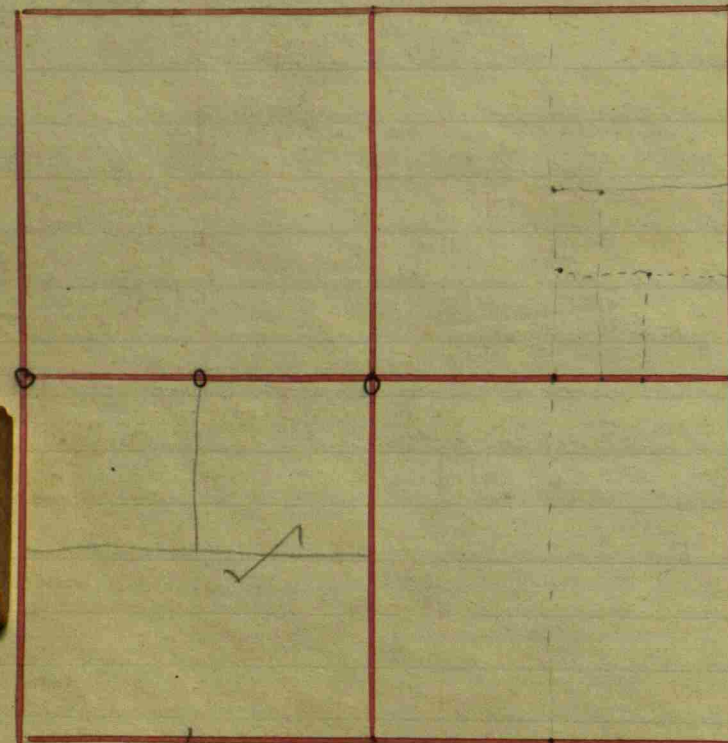
Owners names & cor. Witnesses Dr. Bearings links  
 another Stone 24 + 16 =  
 East 1/2 mile Post  
 nearly gone; Ray  
 a Stone underground  
 Stone 12 + 11 + 8  
 Center S. of NW 1/4 a  
 also witness  
 Center North of NW 1/4  
 a Stone 12 + 10 + 8  
 Center of Sec. 33  
 Stone 15 + 11 + 9  
 Center East of Center  
 a Stone 30 + 20 + 8  
 a Corner 60 Rods +  
 101 Rods South of it  
 a Stone 18 + 12 + 8  
 (my corner here set  
 from Rogers' work also condemned)  
 Book C. p. 284

Center N. of NE 1/4 Sec. 33  
 a Stone 18 + 14 + 7  
 Book C. p. 312

Owners names & cor. Witnesses Dr. Bearings links  
 13.76 1/4 C W cen  
 see stone 25 X 10 X 6  
 1384 3/4 C W N 1/2 mi stone  
 stone 6 X 4 X 16  
 This last cor is 6.29 1/4 C E cen N NW 1/4  
 Book C. p. 390

Found by  
 or from  
 old clear stone

Section 34 T7 North, Range N East. Owners names & Co. Witnesses Dr. Bearings links



El Naive 5 S 1/4 of Section N E corner of same	acres off the S E corner of W 1/2 of 34; 7 chains & 7 links square; a Beech 10 S. 58 1/2° E 3 1/2 an Ironwood 5 S. 14 1/2° W 18 an Ash 8 S. 6° E 1 1/2 an Elm 16 S. 84° E 9 an Ash 10 N. 37° E 5 1/2 a Cherry 20 S. 55° W 25 <u>Book C.P. 10</u>
--	---

Center of NW 1/4 of Sec 34	a Beech 18 S. 69 1/2° E 30 a Swamp Ash 11 N. 69 1/2° W 64 1/2 <u>Book C.P. 25</u>
----------------------------	---

1/2 mile Post on South Witness tree, all plain of air at Stone 18+12 S E cor. of Sec. Relocated S E 1/4 cent. S. at Stone 18+12	Section 34 Relocated from one Beech a B. Walnut 36 S. 77 1/2° E 58 an Elm 36 S. 11 1/2° W 95 a Walnut 24 N. 46 1/2° W 122 an Ash 20 N. 56 1/2° E 54 <u>Book C.P. 100</u>
---	---

1/2 Mile stone found buried 6 inches deep.  
Ash tree 10" diameter 55° W 24 links  
Elm tree 24" diameter 58° W 123 1/2 lbs.  
Stanley Shurtle, 1945.

Owners names & Co.	Witnesses	Dr. Bearings	links
Lot B. Gardner S 1/4 corner	The E 1/2 of S 1/4 of Sec. 34 a Beech	13 S. 42° E	13
+ NW corner	a Ditto	14 N. 10° E	24
+ NW corner	a Beech	18 S. 47° E	7
	a Hickory	... N. 47° W	36
	an Elm	8 South	8 1/2
	a Ditto	4 West	6
As Indefinite table of timber & bearings The above all from Book B. 2275	a Beech	18 N. 65° E	9
	a Hickory	18 S. 85° W	23 1/2
	a Walnut	30 N. 5 1/2° E	5
	a Buckeye	8 S. 50 1/2° W	6 1/2

Owners names & Co. Witnesses Dr. Bearings links

Center of Sec. 34 at Stone 8 by 10 1/2 mile on West tree; at Stone 8 by 10 Center North of S 1/4 at Stone 14+20 Corner 60 Rods S. of at Stone 14+16	by agreement on Gregg's corner: a Beech 16 N. 77° W 62 1/2 an Oak 24 N. 63° E 64 Relocated from stump of old witness an Oak 36 N. 26 1/2° E 94 a Ditto 24 N. 72 1/2° W 120 a Beech 18 S. 51 1/2° W 99 an Elm 4 S. 70 1/2° E 7 1/2 Center North of S 1/4 a B. Walnut 24 S. 98 3/4° W 27 1/2 a Buckeye 10 S. 25° E 20
--	---

Corner 60 Rods S. of at Stone 8+14	West 1/2 mile on Section line, a Hickory 14 N. 80° W 48 a S. Oak ... S. 57° E 95
---------------------------------------	--

Center South of at Stone 16+20	SE 1/4 Gregg's corner nearly: an Ash 18 N. 56 1/2° E 55 3/4 a Elm 30 N. 31 1/2° E 114
-----------------------------------	---

Center North of said at Stone 6 by 8 Corner on South of stumps of old witness trees; at Stone 16 by 24	SE 1/4 Gregg's corner & one new witness: a Hackberry 12 S. 86 1/2° E 41 between Sec. 33+34 Relocated from a Beech 14 S. 26° W 28 a S. Oak 36 N. 64 1/2° W 26
--	--

C. Rogers Surveyor in name	<u>Book C.P. 171</u>
-------------------------------	----------------------

Owners names & Co. Witnesses Dr. Bearings links

89 Rods 29+29+31 a Cherry -	North of centre of Section 6 S 20 1/2° W - 58
--------------------------------	--

29 Rods N. of cent. S. SW 1/4 a Hickory 16	S 38° E. 108
---	--------------

89 Rods N of centre S. SW 1/4 Hence East 44 Rods;	a stone 12x15, a B. Walnut S 13° W, 27 1/2
--	--

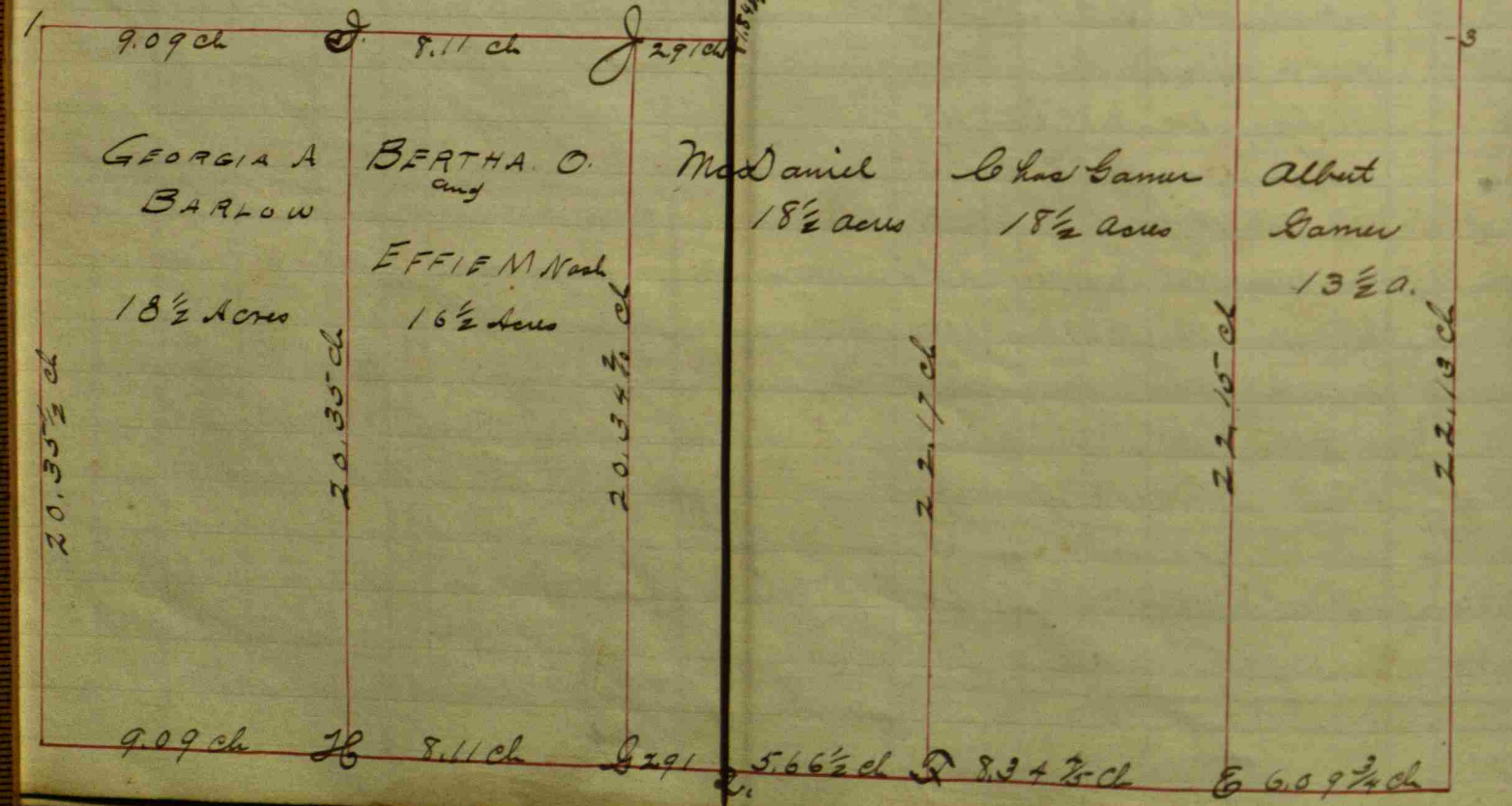
44 Rods Base from centre a stone 12x18 inch,	North of S W 1/4
---	------------------



Plat of H. B. Garner Estate.  
 Joseph Pollio  
 Alex. S. S. S. } Commissioners  
 John H. Trotter  
 March 19 - 1902

20.13 ch  
 Theodore Garner  
 18<sup>1/2</sup> acres

20.12 ch  
 Rollie Garner  
 19<sup>1/2</sup> acres



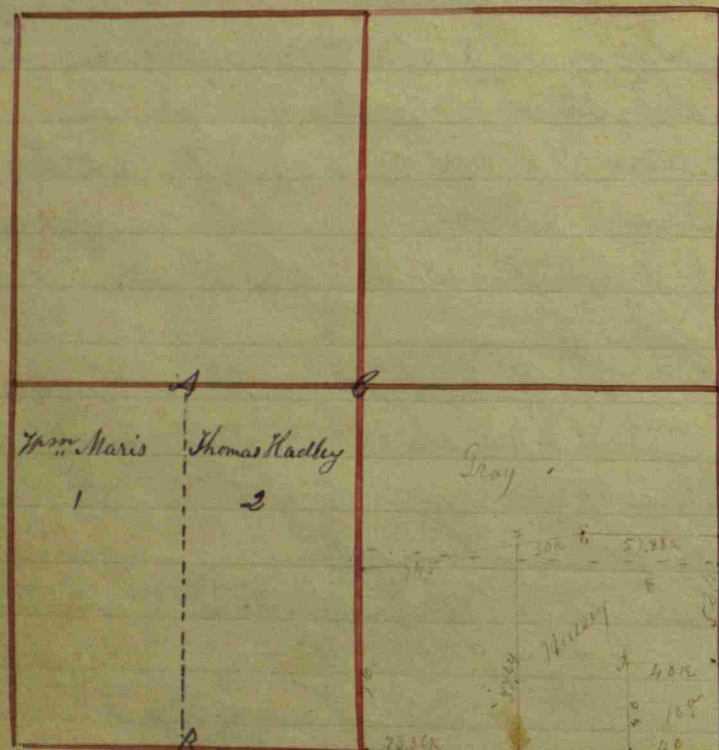
Description of Corners for H. B. Garner Estate

1. Stone 8x10x16 cur by SW cor. Hit Stone East 25 L.
2. Cur by SW cor. Stone 9x10x16 Hit 27 "
3. Cur by center " 3x12x15 Hit Stone South 30 "
4. Cur by SW quarter Stone 8x10x15 Hit Stone South 30 "
- A. Stone 22x9x8 Hit Stone 9x5x12 West 28 "
- B. Stone 4x5x14 Hit Stone West 25 "
- C. Stone 8x10x5 Hit by Stone East 25 "
- D. Stone 12x12 Hit by Stone South 25 "
- E. Stone 10x10x12 G. Ash 20 ft 65 1/2 ft. 53 1/2 "
- F. Stone 5x10x16 B Walnut - 12 - S 20 3/4 E. 20 "
- G. Stone 7x8x13 Hit Stone North 25 "
- H. Stone 8x16 Hit Stone South 25 "
- I. Stone 12x3x8 Hit Stone West 25 "

- J. Stone 12x10x6 Hit Stone West 25 L.
- K. Stone 15x15x17 Hit Stone North 25 "
- L. Stone 8x10x14 Stone North 25 "
- B. Walnut - 15 - S. 10 3/4 E. 38 "
- N. F. Franklan Saw H. Co.
- P. D. Corner 8.35 lks East of Cor Sw 283-16-1 E Stone 5x5x11 42 1/2
- Vt Cherry 8. S. 60 1/2 ft.
- See Sec 2-16-1 E for Balance of Partition

Growth in Mathematics

Section 35 P<sub>17</sub> North, Range N<sub>1</sub> East.



William Hopkins  
 Section 35 as follows  
 said 1/4: Thence South  
 Thence East with Sec  
 East corner of same  
 at stone 12 in. Rounding  
 Thence North with  
 line: NE corner  
 at stone 15 by 12

SE corner of Sec. 35  
 at stone  
 South 1/2 mile relocated  
 by running + measuring:  
 at stone 20 + 26  
 Sec. corner South at  
 N 1/2 mile from old Witz  
 at stone  
 E 1/2 mile from old Witz  
 at stone 16 x 24  
 Center of Section  
 at stone 8 + 12  
 Center North of center  
 at stone

Witnesses	Dr.	Bearings	links
48 1/2 acres out of the NW 1/4 of			
Beginning at the NW corner of			
80 Poles: a good Stone in the Road:			
bearing 97 Poles:			
a Beech	12	N. 38° E	33
+ a Hickory	20	S. 5° W	35 1/2
Sec. bearing 80 Poles to the Section			
at Hickory	24	N. 13 1/2° E	11 1/2
+ a Beech	18	S. 57° E	29
Book C. p. 96			

an Ash	16	S. 21° E	11
+ a Oak	8	S. 38 1/2° W	52
by running + measuring:			
at stone 20 + 26			
4 <sup>th</sup> witness	12 x 14	S. 52° E	39
Stone witness	—	N. 85° W	116
a Beech	18	N. 3 1/2° E	32 3/4
+ a Beech	12	N. 43 1/2° W	10
at Hickory	20	N. 92° E	35
+ a Ditto	24	S. 67° W	62 1/2
at Poplar	36	S. 6 1/2° W	24
+ a W. Oak	20	S. 82° E	27 1/2
an Elm	24	N. 24° E	28
+ a S. Ash	14	S. 1° W	8

Thence to the top for remainder

Owner's name to	Con	Witnesses	Dr.	Bearings	links
William Maris No 1	A	a Beech	18	N. 1 1/2° W	15
		+ a Ditto	16	S. 35° W	36
	B	a Beech	14	S. 32° E	4
		+ a Ditto	14	N. 71° W	20
Thomas Hadley No 2	C	a Beech	8	N. 22° W	3
		+ a W. Oak	18	S. 40° E	19
Book B. p. 296					

Owner's name to	Con	Witnesses	Dr.	Bearings	links
Center West of Center		a Beech	24	S. 82° W	15
at Stone 14 + 16		+ a Beech	14	S. 5 1/2° E	26 1/2
Center South of S W 1/4		an Ash	2	N. 87° W	31 1/4
at Stone 14 + 18		+ a Stone with 12 x 14		N. 39° E	41
Book C. p. 218					

4		a B. oak	10	S 16 1/2 W	35
5		a con stump	40	S 40 1/2 W	116
6		a log	4	S 60 W	18
7		a Beech	10	S 34 W	39
7. S. Stone, promised					

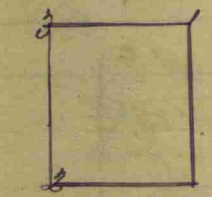
Section 36 N7 North Range N East. Owners names & cor. Witnesses Dr. Bearings Links

Center North of NW 1/4	a B. Oak	40	S. 65° E	97
at Stone 12+16	an Elm	50	N. 26° W	10
Center West of NW 1/4	an Elm	16	S. 35° E	13
at Stone 10+12	+ a B. Oak	41	N. 67 1/2° W	12 1/2
Same Section 36				
1/2 Mile at Stone 16+16	a B. Oak	14	N. 8 3/4° E	87 1/4
Corner 20 Rods West of Cen	large Stone		N. side	
East of Cen. at Stone 12+18	Witness		S. 53° E	.....
Corner 7 1/4 Rods S. of Center	at Stone Witness		S. 51° E	29 3/4
N. of Cen. at Stone 12+14	+ a B. Oak	12	N. 44 1/2° E	33
N East Corner of Section	a Beech	12	N. 5° E	47
at Stone 8+12	+itto	2	S. 78° W	17
Corner 2 Rods S			S. 56 1/4° W	38 1/4
East			N. 19 3/4° W	25 1/4
+ 2 Rods			N. 9 1/2° E	97
1/2 Mile in Section 36	Relocated from old witnesses:			
at Stone 16+8	a Beech	14	S. 51 1/2° E	65 3/4
	+ a B. Oak	10	East on line	98 1/4
Center of Section	an oak stump	50	N. 60 1/2° W	101 1/4
at Stone 16+24	+ at Stone Wit.		N. 46° E	42 3/4
+ 20	+ at Stone Wit.	10+15	S. 87° W	31 3/4
Cen. North of Cen. at Stone 16	a B. Oak	50	N. 44 1/4° W	71 1/2
NW Cor. from old witnesses	+ a Poplar	30	S. 58 3/4° E	40
at Stone 8+12	a B. Oak	6	S. 66 3/4° E	34
Center West of Center	+ a Book	8	N. 30 1/2° E	31
at Stone				



Center North of NW 1/4	a B. Oak	40	S. 65° E	97
at Stone 12+16	an Elm	50	N. 26° W	10
Center West of NW 1/4	an Elm	16	S. 35° E	13
at Stone 10+12	+ a B. Oak	41	N. 67 1/2° W	12 1/2
Same Section 36				
1/2 Mile at Stone 16+16	a B. Oak	14	N. 8 3/4° E	87 1/4
Corner 20 Rods West of Cen	large Stone		N. side	
East of Cen. at Stone 12+18	Witness		S. 53° E	.....
Corner 7 1/4 Rods S. of Center	at Stone Witness		S. 51° E	29 3/4
N. of Cen. at Stone 12+14	+ a B. Oak	12	N. 44 1/2° E	33
N East Corner of Section	a Beech	12	N. 5° E	47
at Stone 8+12	+itto	2	S. 78° W	17
Corner 2 Rods S			S. 56 1/4° W	38 1/4
East			N. 19 3/4° W	25 1/4
+ 2 Rods			N. 9 1/2° E	97
1/2 Mile in Section 36	Relocated from old witnesses:			
at Stone 16+8	a Beech	14	S. 51 1/2° E	65 3/4
	+ a B. Oak	10	East on line	98 1/4
Center of Section	an oak stump	50	N. 60 1/2° W	101 1/4
at Stone 16+24	+ at Stone Wit.		N. 46° E	42 3/4
+ 20	+ at Stone Wit.	10+15	S. 87° W	31 3/4
Cen. North of Cen. at Stone 16	a B. Oak	50	N. 44 1/4° W	71 1/2
NW Cor. from old witnesses	+ a Poplar	30	S. 58 3/4° E	40
at Stone 8+12	a B. Oak	6	S. 66 3/4° E	34
Center West of Center	+ a Book	8	N. 30 1/2° E	31
at Stone				

Section 36 S17 NW 18	1	a B. Oak	4	N. 61° E	30 1/2
	2	+ a B. Oak	5	S. 38 1/2° E	35
	3	a B. Beech	15	S. 42 1/2° E	15 1/2
		+ a Hickory	20	N. 32 1/2° E	38
		a B. Poplar	18	S. 51 1/2° W	22
		+ a B. Oak	41	N. 42° E	71



Note: This not clear but about as I find it in Book p. 247

Section 36. 77 acres off the S 1/2 of the N 8 1/4. Divided between Quinn & Murrell & 8 acres of timber West 40 on North line North & South in

Note: This too is in Book p. 218

Center of S. E. 1/4 of Sec. 36 a Stone 10x15x16 B. Walnut 6 S. 45° W 47

Owner's names & cor. Witnesses Dr. Bearings Links				
Kinney et al Survey for				
Ben. S. of S. W. 1/4				
Stone 6x16x18	Stone	South	15	ft.
	do	North	15	ft.
	Beech	N. 47° E.	22	ft.
Ben. of S. W. 1/4				
Stone 8x14x22	Stone	West	15	"
	do	North	10	"

J. W. Trotter, G. Co. Surv. 1898

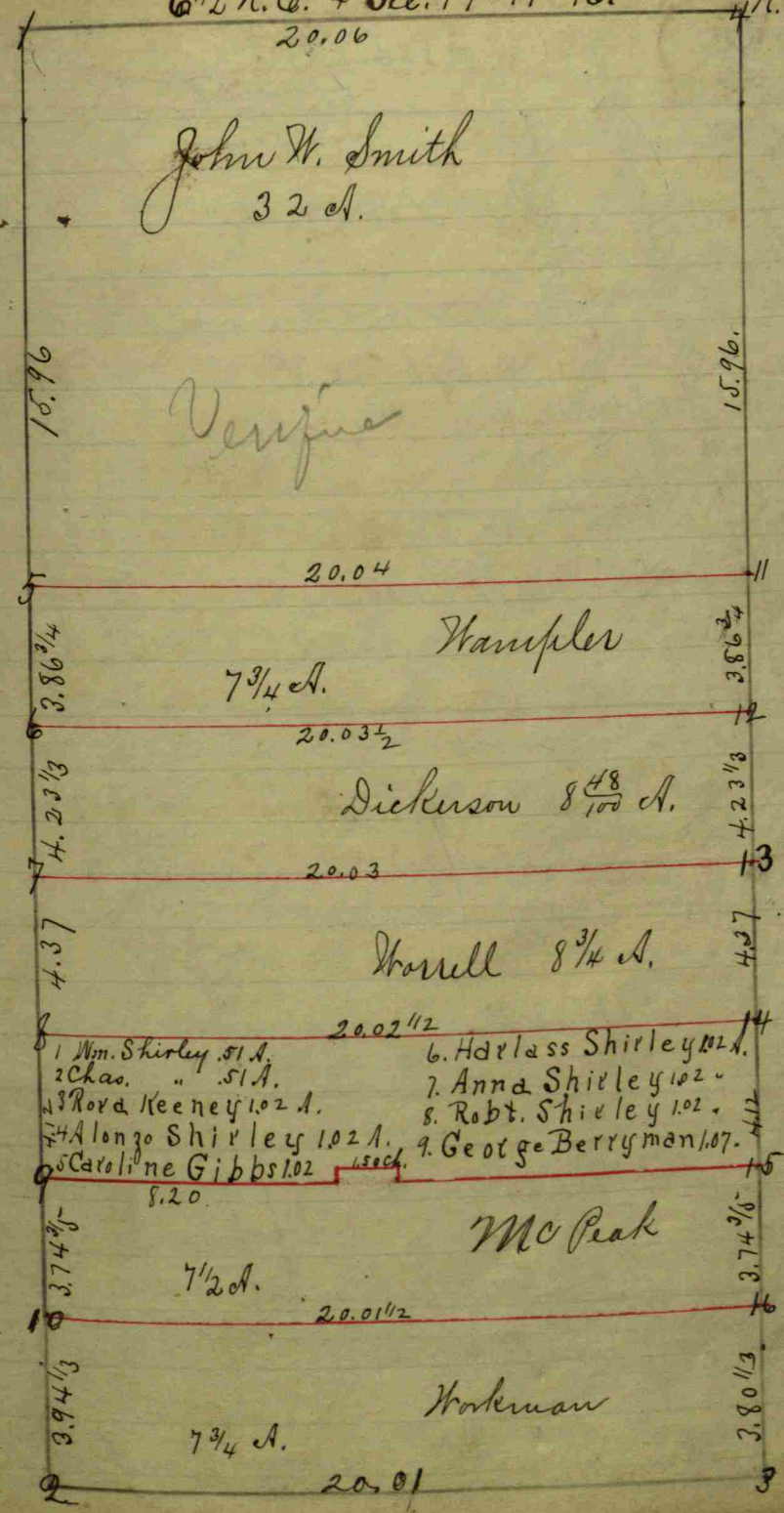
E 1/2 Mile stone found 7" below surface of road. Wooden cor post S 17.15°; Wooden cor post N 5° E 17.20°; Power pole S 80° E 73.35' W 1/2 Mile stone 31-17-2E N 10° Aphis Claypool July 24. 1947.

Verified

Subdiv of a one Lot. Begins 71 R & 8 links N.E. from the last cor.  
It being 8 1/2 R on the E. 8 1/4 R on the W, North side 10. R S side 10.24 R. bearing same  
as before

Carrey Merchant survey for. Nov. 9th. 1898.  
A part of the E. 1/2 Sec. 31-17-16. was bounded as follows: Begin. at Cen. of said sec. at a stone  
6x6x14 wit. by B. Walnut 10 N. 66 W. 59 ft. and Elm 12 N. 13 W. 75 1/2 feet: Thence S. 37. 41 2/3 chains  
to a stone 6x8x12 on the N. line of the Right of Way of S. B. and W. R. R. Thence N. 68 1/2 W. 30 chains  
to a stone 5x6x12 on the N. line of said R. R. Right of Way; Thence N. 12 1/2 E. 5.71 1/5 chains to  
a stone 5x7x14; Thence West 1.29 chains to a stone 5x6x14; Thence N. 19 E. 14.29  
chains to a stone 5x7x14; Thence East 3.85 chains to a stone 5x5x16; Thence North 8.19  
chains to the Cen. of Cen. of said Sec. 31; Thence East 20.07 1/2 chains to the place of beginning  
estimated to contain 82 1/100 acres more or less.  
Nov. 9, 1898. J. W. Trotter, Surveyor Hardwick County

For S. N. sec. cor. see page 118 in Book for T. 16 N. R. 17 W.



John W. Smith  
3 2 A.

Verified

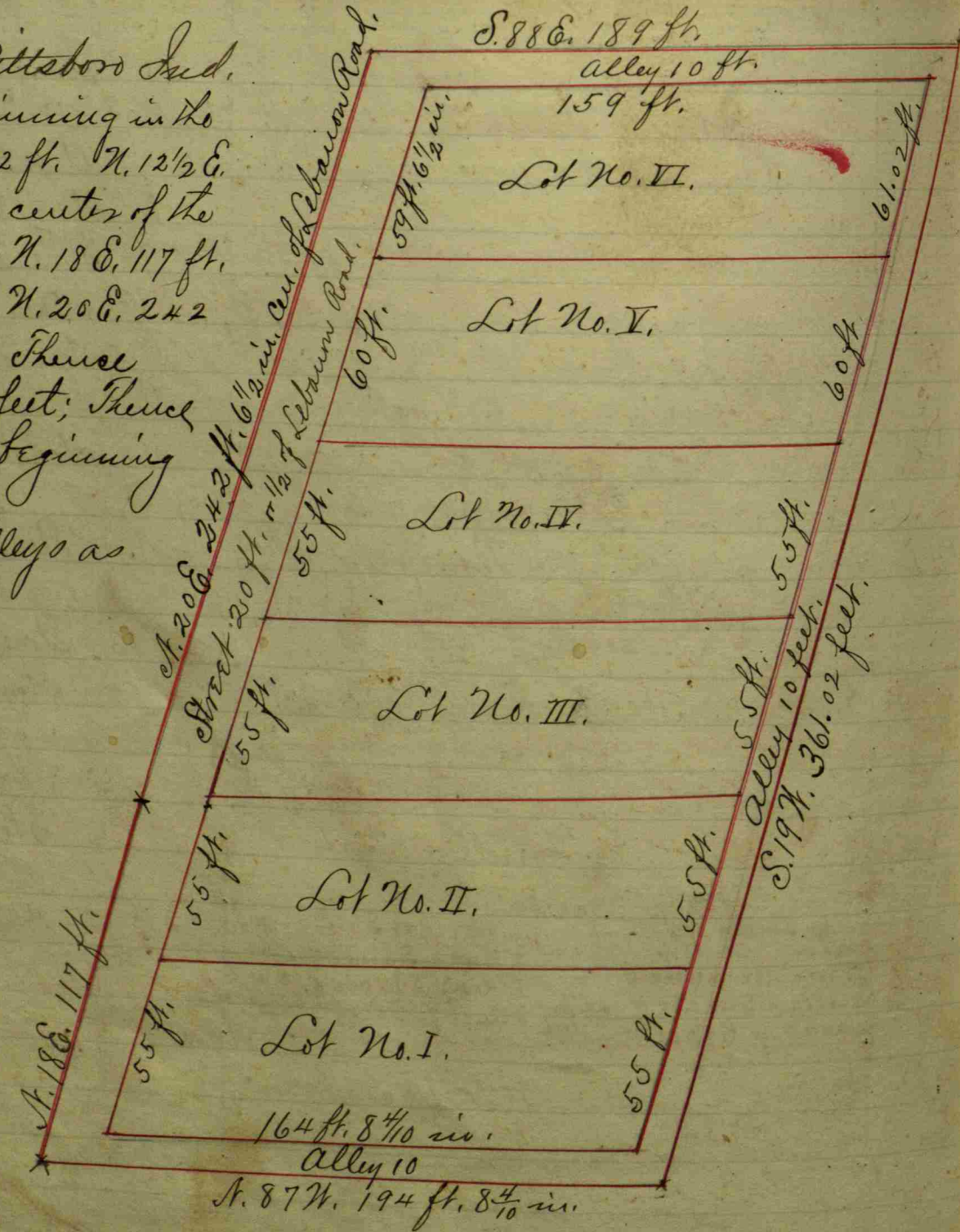
- 1 - Stone 8x12x16 wit stone North 27 links.
- 2, 3, & 4 corners already established
- 5 - Stone 8x15 - wit. stone N. 63 3/4 W. 25 1/2 L.
- 6 - Stone 6x10 - B. Walnut 16 N. 78 1/2 E. 87 1/3 L.
- 7 - Stone 6x6x12 - wit stone N. 75 W. 28 L.
- 8 - Stone 6x8x10 wit. stone N. 72 1/2 W. 28 1/2 L.
- 9 - Stone 6x8 on top of another stone - wit stone N. 73 W. 30 L.
- 10 - Stone 8x10x16 wit. stone N. 82 W. 30 L.
- 11 - Stone 10x10x24 Elm 30 N. 83 1/2 E. 19 2/3 L.  
Do 30 N. 12 E. 18 2/3 L.
- 12 - Stone 8x15x18 Ash 20 S. 8 W. 28 L.  
Do 10 N. 64 1/2 E. 18 1/2 L.
- 13 - Stone 6x8x14 wit. stone North 22 1/4 L.
- 14 - Stone 6x12x14 Ash 4 N. 1 1/2 E. 45 1/2 L.  
Red Haw 10 N. 15 E. 19 1/2 L.
- 15 - Stone 8x10x14 wit stone North 29 L.
- 16 - Stone 8x14 wit. stone North 33 L.

J. W. Trotter, surveyor.

3 E. 1/2 Mile stake.

Verified

Richard L. Dillor's Add. to Pittsboro Ind.  
 Being a part of the N. 1/2 S. 1/4 31-17-18. Beginning in the  
 cent of the Lebanon State Road at a point 592 ft. N. 12 1/2 E.  
 from the center of said road crosses the center of the  
 Peoria Div. of C. C. & St. L. R. R., thence N. 18 E. 117 ft.  
 in the cen. of said Lebanon road; thence N. 20 E. 242  
 ft. and 6 1/2 inches in cen. of said road; thence  
 S. 88 E. 189 ft., thence S. 19 W. 361 2/100 feet; thence  
 N. 87 W. 194 ft. 8 7/10 inches to the place of beginning  
 estimated to contain  
 and is laid off into lots, street and alleys as  
 shown on the plat.  
 N.E. cor. of add. stone 8x12x12.

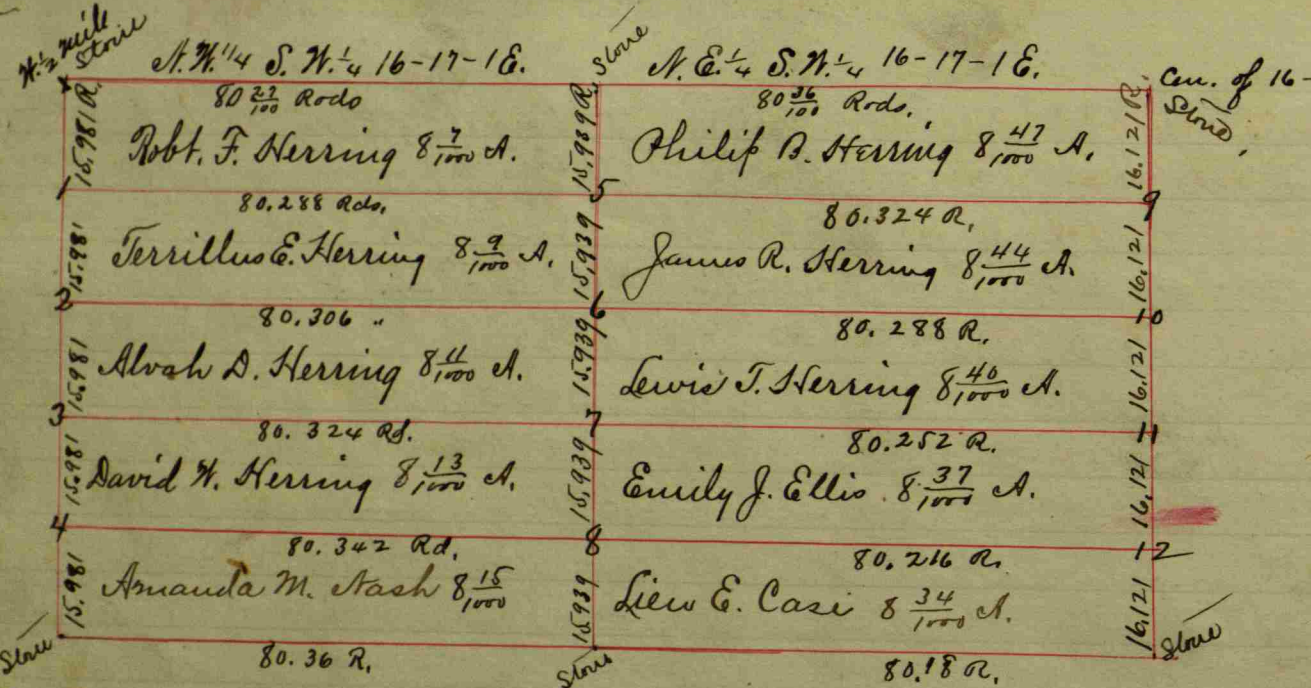


Nov. 1898. J. W. Butler, Surveyor Henderson.



Verified

Thence North 20.90 ch. to a stone 8x12x15 not witnessed. Thence West 119 2/3 ch.  
 to the N.E. cor. of Anna Faught's part. Thence S. 20.90 ch. to the beginning = 2 1/2 acres.  
 Brownlow Paynes division - beginning at Myers S.E. cor. Thence East 119 2/3 chains to  
 a stone 5x9x8 Hickory 15 N. 39 3/4 W. 59 2/3 feet, and a Beech 18 N. 53 3/4 E. 44 feet,  
 Thence North 20.90 ch. to a stone 5x10x16 not witnessed. Thence West 119 2/3 ch.  
 to Myers N.E. cor. Thence S. 20.90 ch. to the beginning = 2 1/2 a.  
 Spruzo Douts division - Beginning at Brownlow Paynes N.E. cor. Thence North. 15.04  
 ch. Thence S. 72 W. 268 ch. Thence S. 30 3/4 W. 360 ch. Thence S. 46 W.  
 4.31 ch. to a stone 8x11x20 Honey Locust 24 N. 72 1/2 W. 15 1/2 feet, Thence S. in center  
 of the road 5.33 ch. to a point 20.90 ch. N. of Cen. of Sec. Thence E. 9.33 ch. to the  
 place of beginning = 10 acres  
 Wm. Douts division - Beginning at S.E. cor. of N. 1/2 N. E. 1/4 Sec. 32 T. 17 N. R. 1 E. Thence  
 North 11.50 ch. Thence N. 43 1/2 W. 4.00 ch. Thence N. 20 1/2 W. 573 ch. Thence N. 50 E. 1.00 ch.  
 Thence N. 8 W. 5.50 ch. Thence N. 55 1/2 W. 2.50 ch. Thence N. 12 1/2 W. 500 ch. Thence N. 3 W. 175 ch.  
 Thence N. 22 3/4 W. 319 ch. Thence S. 72 1/2 W. 1.82 ch. to Spruzo Douts N.E. cor.  
 Thence S. 35.94 chains to Brownlow Paynes S.E. cor. Thence East 10.86 ch. to the  
 place of beginning = 32.91 acres.  
 Also 1 acre out of the N. W. cor. of the N. 1/2 of the N.E. 1/4 of Sec. 32-17-18. no corners established.  
 William Symmonds and Nelson Spickler's a survey for in sec. 32 T. 17 N. R. 1 E.  
 S. 1/2 relocated by a stone 3x4x26, wit. by a beech 20 N. 51 1/2 E. 22 feet.  
 Thence North 66 7/2 feet to a stake, wit. " " beech 24 S. 81 1/2 E. 13 1/2 " and  
 also a beech 24 N. 11 1/2 W. 19 1/2 feet.  
 Thence West 1333 3/4 feet to a stone 8x10x11 wit. by a stone 5x18x22 E. 15 feet.



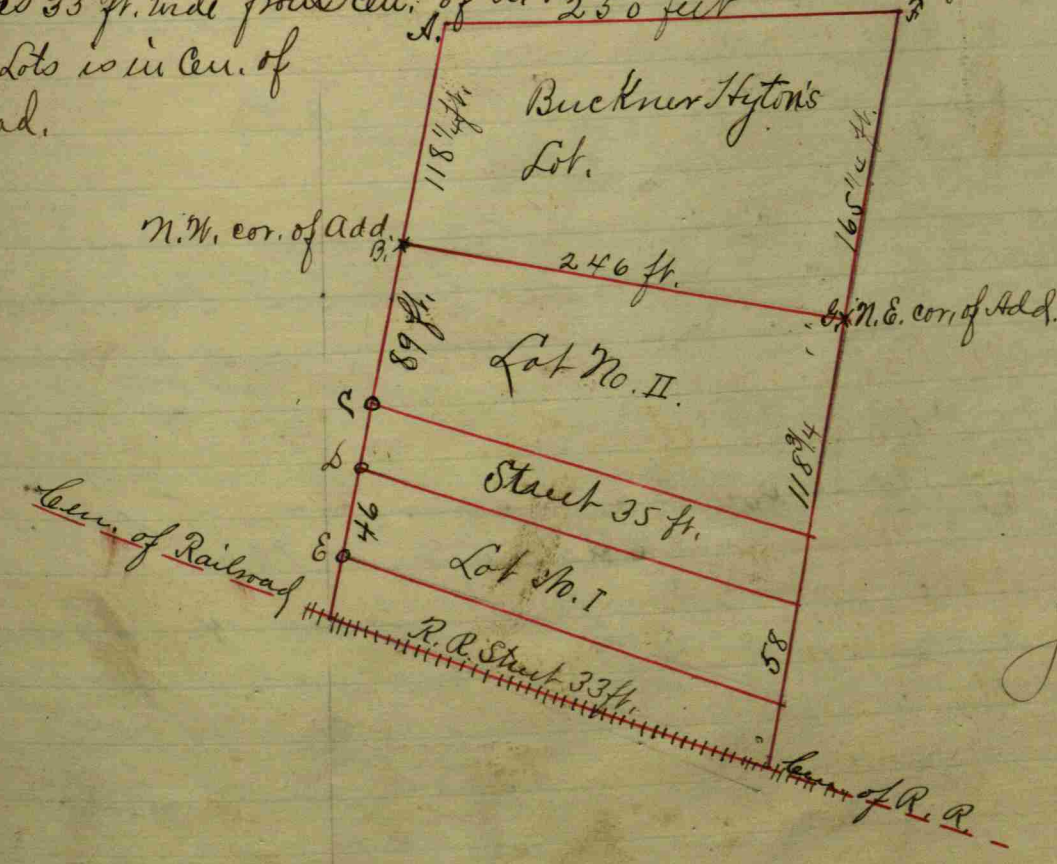
1. Stone 6x9x15  
Stone East 12 feet.
2. Stone 7x12x15  
Stone East 12 feet
3. Stone 9x9x18  
Stone East 12 feet.
4. Stone 10x12x18  
Stone East 12 feet.
5. Stone 9x14x18  
Stone South 12 feet.
6. Stone 8x18x24  
Stone South 12 feet.
7. Stone 8x15x20  
Stone South 12 feet.
8. Stone 3x20x22  
Stone South 12 feet.
9. Stone 4x10x18  
Stone South 12 feet.
10. Stone 9x17x22  
Stone South 12 feet.
11. Stone 12x12x18  
Stone South 12 feet.
12. Stone 6x11x14  
Stone South 12 feet.

J. W. Trotter Surveyor Hendrick Co.  
Dec. 11, 1896.

Verified

Verified

Jno. A. Jordan's Add. to Pittsboro, Indiana.  
A part of the S. 1/4 S. 1/4 16-17-1 E. Beginning at a stone in the center of the Lebanon State Road N. 12 1/2 E. 202 3/4 feet from the cen. of the D. B. & W. Railroad; Thence S. 79 3/4 E. 246 feet; Thence S. 13 1/2 W. 244 feet to cen. of R. R. Thence N. 68 1/2 W. 250 feet to the center of said Lebanon Road; Thence N. 12 1/2 E. 202 3/4 feet to the beginning and is laid out in Lots, Streets as shown on the Plat. R. R. Street is 33 ft. wide from cen. of R. R. track to S. side of Lot No. I. N. line of the Lots is in cen. of Lebanon Road.



- A - Stone 4x6x15  
with R. R. Road East 20 ft.
- B - Iron Rod 1x24 inches.  
This N. W. cor. of Jordan's add.
- C - Stone 5x9x12 S. W. cor. Lot 2.
- D - Stone 4x6x15 N. W. cor. Lot I.
- F. Stone 5x8x16 N. E. cor.
- G. Iron Pin 1x24  
Plum Tree 3 1/4 E. 8 1/3 ft.

J. W. Trotter Surveyor, Nov. 16, 1898.

321 1/4  
118 3/4  
202 3/4



Sunny for Lawler Everett et al Dec 22-1903-

- (a) 18 1/2 ch W of SE cor. Sect 14 in Havers tract by Stone S 78 W 64 1/2 L & Stone North 25 L,
- (b) 12.83 ch E of (a) Havers tract by chug S 55 3/4 W 32 1/2 L & Stone North 25 L,
- (c) 6.41 1/2 ch E of (a) Havers tract - W chug N 70 W - 74 1/2 L, & Stone North 25 L,
- (d) 15 1/2 ch W of 99.76 Res. N of SE cor S. 14 Stone 16 x 12 x 5. Diamond & S 30 1/4 W 65 1/2 L,
- (e) 6.41 1/2 ch E of (d) Stone 12 x 8 x 9 by Stone West 25 L,
- (f) 6.41 1/2 ch E of (e) Stone by W chug 10 N 85 1/2 E 20 L,

W. F. Franklin S.H.C.

On Mar 4, 1904, pursuant to 10 days notice served on J. M. Lawler, the above sunny was accepted by said J. M. Lawler and the same is hereby approved & confirmed as made in the presence of and by agreement of all parties interested.

W. F. Franklin,

Sunny for Gore, L. B. + Raymond Lamer, October 2, 1906,

North 99.76 Rds & west 1.81 1/2 ch of S.E. cor sec 14, Stone <sup>large</sup> ~~2 x 5 x 10~~ with stone ~~8 x 10 x 12~~ S 7 1/2 E, 1 rd, & Stone West 15 links Stone 24 rods East of Center East of center on bank of ditch. J. H. Ligg S. H. C.

460  
1.51  
6.51  
6.41  
12.83



County & Public Roads in N. North Range East.

From Road leading from	to	Witnesses	Dir.	Bearings	links
From County line to N. 17th	beginning at the North 1/2				
Mile Post of Section 18, S. 17	North Range East, on the				
County line; thence South	on line (S. bearing) 1/2 mile				
to Cen. of Sec. 19; thence S. 71° E. 32 p	and on wood 5	N. 26° W			40
	1st p, oak	14	N. 26° W		47
thence N. 75° E. 14 poles, then	18	S. 51° E			29
	1st Beech	12	N. 85° W		21 1/2
thence N. 60° E. 15 poles;	1st Sugar	8	N. 42° E		27
	1st Hickory	10	S. 66° W		23
thence East about 22 poles	to the				Corner;
thence South with line 135 p	an Elm	20	S. 60° W		39
	1st oak stump	30	N. 60° E		33
thence East 10 poles to	1st Poplar	30	S. 6° E		109
thence South 24 p poles	an Elm	12	South		28
	1st an Oak	12	N. 32° E		23
thence East 25 poles to the	Lebanon Road; the Road				
Confirmed by the Board;	Distance 2 1/2 miles; Book 6, p. 30				
New Road from the Pittsboro	Lebanon Road 1 mile				
South of the County line	East as follows;				
Beginning on the	line between Sec. 17 & 20				
S. 17 N. R. 1 E; where	1st Sugar	26	North		3
thence East 84 poles	to the Section corners				
thence East with the	Section line to 20 poles East				
of the 1/2 mile post on	the North of Section 23				
	at the top.				

McHenry County and State of Indiana

Continuation of	where	Witnesses	Dir.	Bearings	links
		an Elm	36	S. 80° E	20
		an Oak	28	N. 10° W	7
		an Oak	16	S. 48° W	30
thence N. 68° E. 18 poles	to the Section corner.				
thence S. 52° E. 12 poles,					
thence East about 114 poles	to the County Road				
thence East with the line	260 poles to the County Road				
	where	an Oak	12	N. 50° E	20
		1st Sugar	16	S. 19° E	64
The Distance being 4 1/2					
miles & 25 poles nearly					
Road of Parks & others	on petition				
Beginning at the	center of Section 29, T. 17 N.				
Range East; thence West 65 1/2		1st Beech	10	N. 48° E	56 1/2
thence N. with S. bearing 26 1/2		1st Hickory	24	N. 36° E	71
thence West 34 poles;		thence N. 78° W	24	poles to	
	where	an Apple tree	4	N. 67° E	54
thence N. 35° W. 5 1/2 poles		thence N. 83° W	27	poles;	
thence West 41 poles; thence		N. 86° W. 6 poles		to the	
thence North 1/4 mile; thence	West to the Range line;				
thence North to the Section	corner; thence West 2 1/2				
to end the Road;					
S. Road; Beginning	at the N.E. corner of Sec. 34				
T. 17 N. R. 1 E; thence	West 2 miles 13 1/2 poles South				
East with Sogant	mill Road, described in a				
former Survey to the	center on the South of the N. 1/2				
of Section 32; thence	West 3/4 of a mile to 1/2 mile				
	next page as top				

Continuation of Roads in T. 17 N. R. 1 East

1/2 mile Post;	Witnesses	Dir.	Bearings	links
thence S. 40 poles to where	1st Oak	36	S. 40° E	7
thence S. 26 1/2 to 15 1/2 poles	1st Beech	8	S. 20° W	6
thence West 90 poles;	thence South 6 p poles; thence West			
50 poles; thence South	with the line 3 1/2 poles to 1/2 mile			
Post East 36 links;	thence South with the Section			
line 93 poles to the	Crawfordville Road;			
Distance 4 miles & 19 1/2	Book 6 p. 59			
A. J. Hoadley Road	Change 20;			
Beginning at, about	190 poles North of the Pittsboro town			
in the County Road	15 feet East of the line dividing			
the lands of Oliver Mills	& the said Hoadley; thence North			
parallel with said	line 80 poles; thence North			
= 65° East 10 poles; thence	N. 10° E. 10 poles; thence N. 87° E.			
32 poles intersecting	the old Road at the S. End of a			
Considerable Bridge, across the Creek	Book 6 p. 111			
J. M. Carlin & others Road	Beginning at the center of			
Sec. 23, T. 17 N. R. 1 East	thence South 32 p. East 2 Rods 20 li.			
thence S. 2° E. 11 Rods &	18 links; thence S. 2 1/2 W. 5 Rods to			
the line dividing the	Section North & South; thence South			
on said line, about	132 Rods to the 1/2 mile post on			
the South of said Sec.	tion, where it intersects the			
Old Road.	Book 6 p. 189			



$$\begin{array}{r} 35.54 \\ 158.18 \\ 158.40 \\ \hline 316.58 \\ 158.29 \\ 80\frac{1}{2} \\ \hline 126.6320 \\ 7964 \\ \hline 160 \mid 12742.64 \mid 79.64 A. \\ 1120 \\ 1542 \\ 1448 \\ \hline 1026 \\ 960 \\ 664 \\ 640 \end{array}$$

$\frac{4154.5}{89} = 148$

09,  $\frac{14.00}{5} \mid 45$

$\frac{33.4}{15} = 16.718$

$\frac{27.3}{.5} = 13.658$

$\frac{21.2}{5} = 10.608$

$\frac{10.2}{.5} = 5.108$

$\frac{158}{176} = 122$

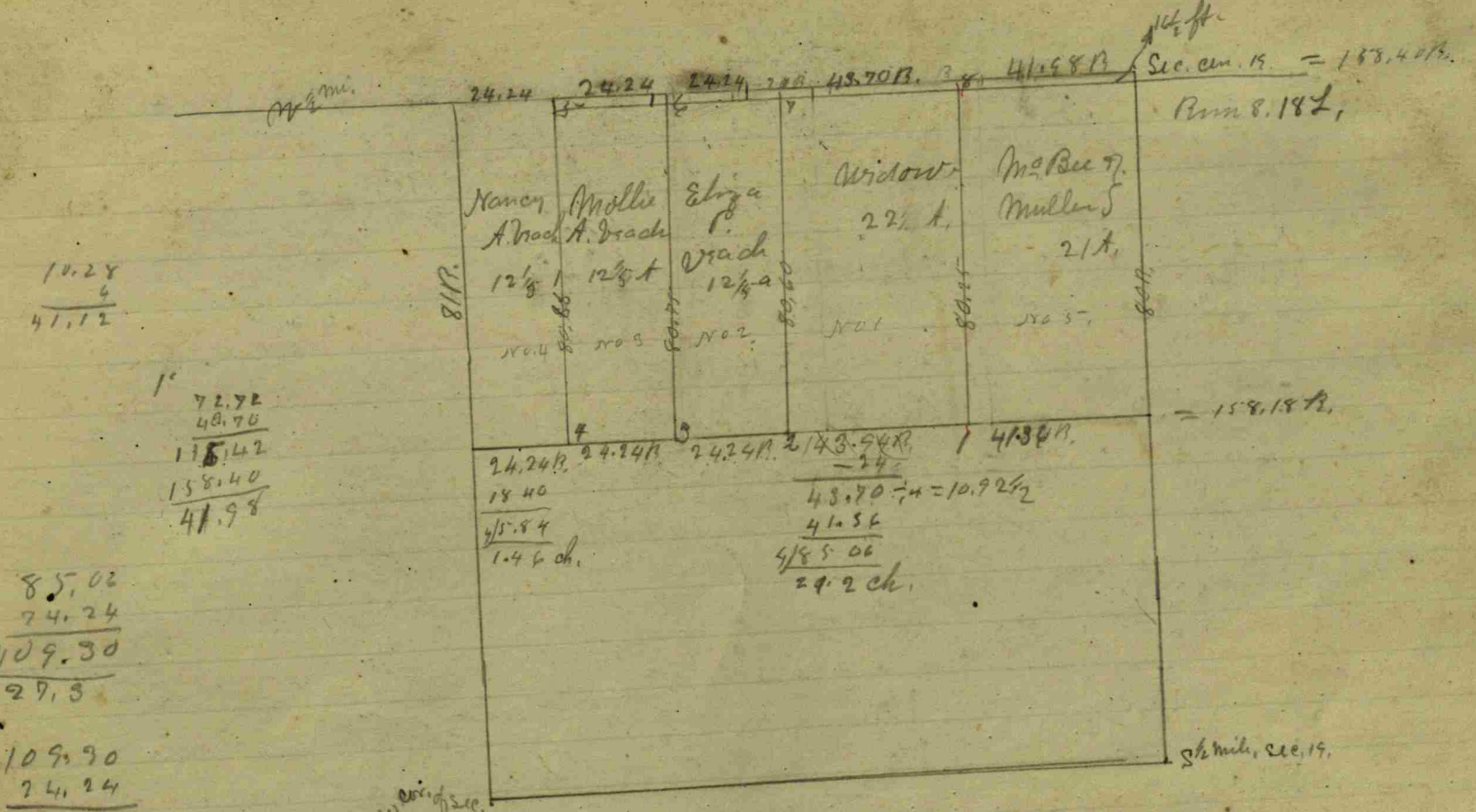
$\frac{44}{7} = 176$

$\frac{382.06}{410800} = .91$

$$\begin{array}{r} 158.00 \\ 1267200 \\ 7920 \\ \hline 12751.20 \\ 1120 \\ 1551 \\ 1440 \\ \hline 1110 \end{array}$$

$$\begin{array}{r} 6.06 \\ 107 \\ 4242 = 12 = 128 \\ 12.12 = 118 \\ 12.12 = 108 \\ 29.12 = 102 \\ 107 \\ \hline 2.0934 \end{array}$$

$$\begin{array}{r} 41.26 \\ 80 \\ \hline 1009 \\ 860 \\ 490 \\ 480 \end{array}$$



1. wit. S. ash 24<sup>m</sup> S. 66<sup>o</sup> E. 80<sup>ft</sup>
2. wit. B. Walnut 4<sup>m</sup> S. 80<sup>o</sup> W. 122<sup>ft</sup>
3. wit. W. Oak stump N. 70<sup>o</sup> W. 100<sup>ft</sup>
4. ... B. Walnut 6<sup>m</sup> S. 81<sup>o</sup> W. 15<sup>ft</sup> & a sugar 16<sup>m</sup> N. 42<sup>o</sup> E. 48<sup>ft</sup>
5. W. Oak, 20<sup>m</sup> S. 66<sup>o</sup> E. 67<sup>ft</sup>
6. S. ash 26<sup>m</sup> S. 57<sup>o</sup> E. 80<sup>ft</sup>
7. Stake driven
8. S. ash 10<sup>m</sup> N. 35<sup>o</sup> E. 102<sup>ft</sup>

50 89.10  
87 1/2

1067-

46.52  
14.30  
32.22

2.53  
2.26  
2.29  
196.1

50  
11.7  
38.3

161.4  
74.12

42  
33.52  
275.52  
37.76  
6.67  
44.43  
4.50  
48.93  
1.40  
50.33

161.00  
120.48  
40.52

50.00  
44.43  
5.57

57.34  
161  
41.34

11.7 acres -

42  
83.53  
75.53  
9  
284.53  
42.27  
6.67  
48.94

161.2  
89  
272.2  
36.1  
10.1  
4

51.34  
46.16  
5.24  
16/1067

50.00  
43.27  
7.73  
6.67  
1.06

42  
33.53  
9  
284.53  
42.27  
100.00  
84.53  
15.47

89  
75.53  
14.83  
3

12968.48  
1868  
16) 14828.48 (926.814359(2)  
444  
42  
32  
108  
192  
124

55.19  
13  
165.57  
35.19  
7.1747

2(102.68  
51.34

8339  
13  
25017  
8339  
10840

30 3840 (12.8  
80  
84  
60  
290

8339 12000 (4.4  
8339  
36610  
33356  
32540  
33356

88.00  
75.52  
12.48  
30  
16 374.40 (2.27  
82  
44  
32  
124

44  
6.67  
50.67  
2.27  
2.94  
16 374.40 (2.27  
82  
44  
32  
124

42  
33.53  
12.8  
188.33  
16 374.40 (2.27  
82  
44  
32  
124

16/1067(1

151

16) 1067(6.67  
96  
107  
96  
110

124.67  
268.268  
12668  
9397  
3568  
75176  
56582  
46985  
28191  
33528496

42  
33.52  
10  
85.52

45  
52

161.2  
89  
272.2  
36.1  
10  
46.1

9397  
3420  
3568  
27360  
20520  
17100  
10260  
12202560

38  
12.2  
25.8  
6.84  
32.64

1692  
804  
6448  
12886  
1296048

25.7  
38  
263.7  
31.85  
33.53  
9555  
159  
9555  
9555

57.34  
161.54  
41.54

25.7  
684  
32.54  
6.94  
239.48  
19.74  
3882  
3948  
15792  
5922  
766.3068

87.5  
75  
12

42  
33.53  
75.53

32.64  
25.76  
6.94

17771  
12  
93252

83390

81  
11.4  
92.7  
10.1  
102.8  
10  
92.80  
51.34  
1.46

3353  
42  
75.53  
9  
84.53

90

8  
20  
16

285  
42.5  
6.67  
49.17  
1  
50.17

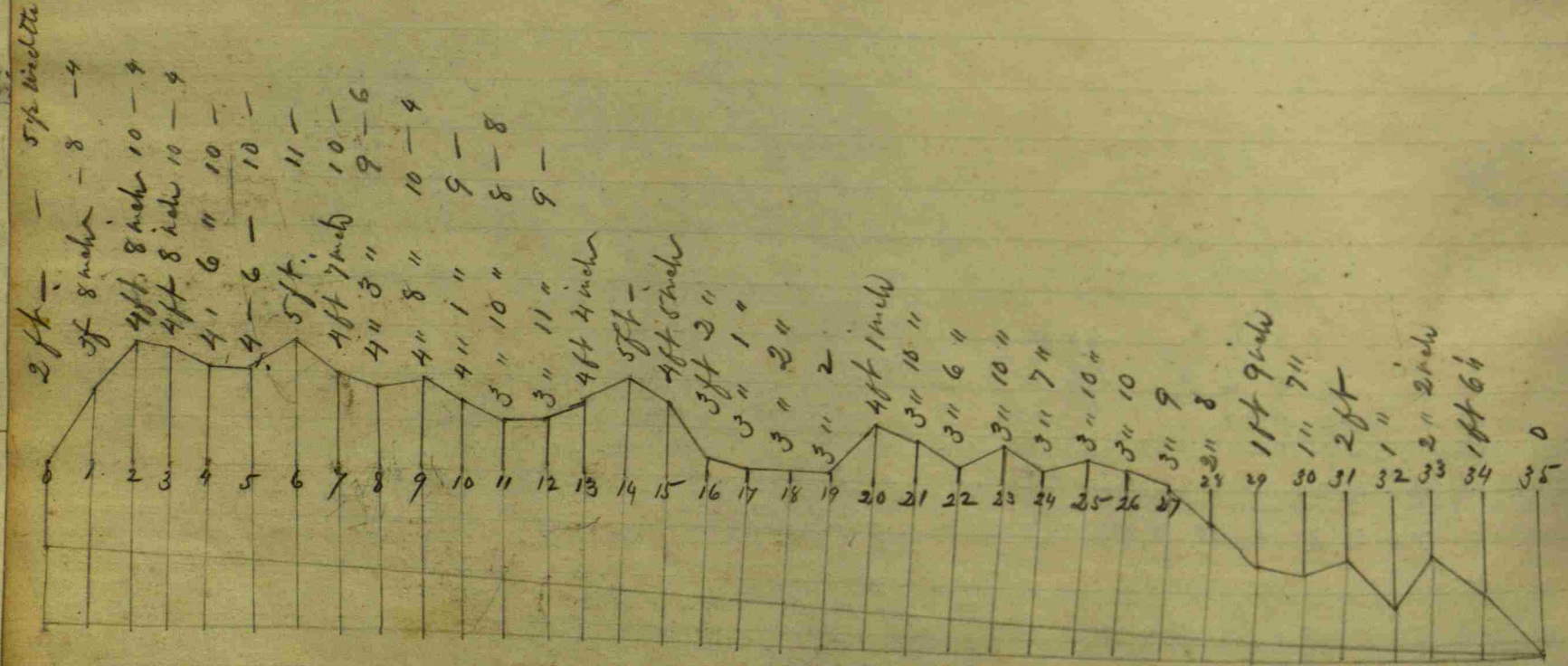
6293  
12  
75.156  
9.82  
1502  
2253  
6759  
6.99932  
30/160(5  
150  
11

270  
35  
1067  
706  
16  
26  
16  
108  
112

16/1296(5  
1725  
16  
16/1067(6.67  
107  
96  
110

152

8 1/2



268  
44



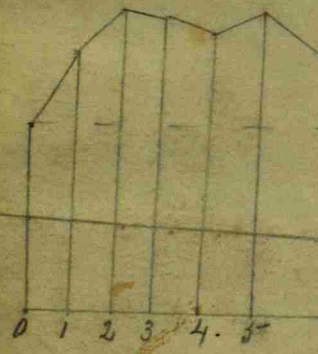
2186  
43 -  
667  
49.67

667  
161  
86  
275  
375  
10.  
47.5

150

8 1/2

2 ft. - 5 ft. width



2188  
44



2660  
913 1/2  
66 ) 1756.6 = 26.6 1/3

66 ) 26.613  
4.435

66 ) 554.0840  
528  
265  
268  
210

S72 1/2 ft. 297 ft.  
S30 3/4 ft. 237 1/2 ft.  
S33 ft. 223 ft.  
S46 ft. 284 1/3 ft.

26.613 ) 355.500 = 11.272 ch.  
26613  
38870  
26613  
22570  
53226  
193440  
186291  
71470

66 ) 231.35  
198  
330

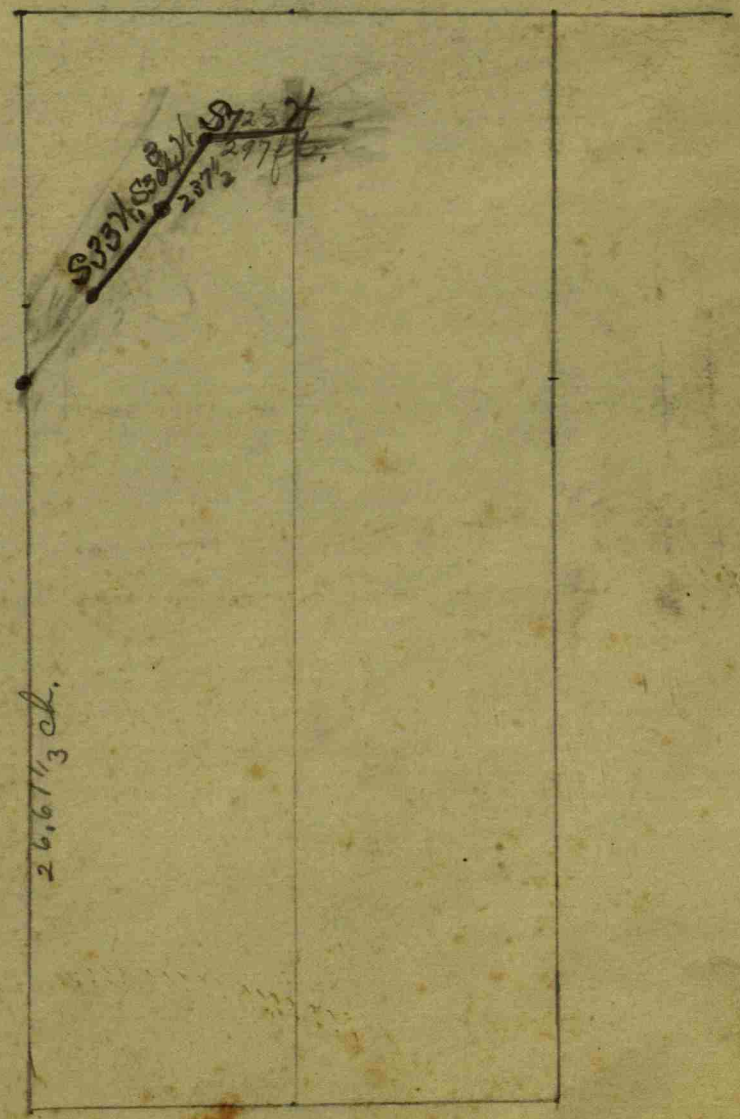
6 ) 4200  
666

6666 ) 84000.2  
6666  
17340  
6666  
2222  
6666  
7777

11.272  
66  
67632  
67632  
743,952 ft.

66  
66  
726

231  
785 ft. 5 in.



$$\frac{2.88}{4} =$$

$$\begin{array}{r} 16 \\ 314 \\ 314 \\ \hline 628 \end{array}$$

$$\begin{array}{r} 11512 \\ 3172 \\ 3172 \\ \hline 21684 \end{array}$$

$$\begin{array}{r} 2720 \\ 11 \\ \hline 29920 \end{array}$$

$$\begin{array}{r} 28512 \\ 14380 \\ 28512 \\ \hline 42892 \end{array}$$

$$\begin{array}{r} 1863 \\ 166 \\ \hline 2029 \end{array}$$

$$20 \frac{1}{2}$$

on 11 28  
11 3  
2  
on 8 31 5 17  
any Paper  
2720  
some coming  
there 17 8 15  
three 17 5  
the beginning  
of the line  
the 11 20 17  
the 21 20 7  
the 21 20 7  
the 21 20 7

Growth in Mathematics

