

4)65  
1.62  
4.87  
1.8  
12.57

Township No 17 North

Range No 2 West





Township No. 17 North.

1	6	5	4	3	2	1
12	7	8	9	10	11	12
13	12	12	10	8	6	5
24	18	12	17	9	16	8
24	19	11	20	9	21	7
24	11	11	9	7	6	4
25	30	11	29	8	28	7
25	10	10	8	7	5	26
36	31	10	32	8	33	6

Range No. 2 West

Range No. 3 West

Township No. 17 North



38 Township No. 17 North of Range No. 2 West 2<sup>nd</sup> Meridian Indiana

37  
66  
222  
122  
342

Chains	West	South Boundary.	Variation	Chains	West
4.00	On S. Boundary of Section 36.	Set 1/4 sec. Post from which	6.00 E.	77.00	On South Boundary of Section 33.
59.50	at Elm 10 in. Dr. bears S. 88. E. 21 links	at N. Ash 10. " " S. 84. W. 11 "		110.00	at Brook 4 links wide Co. South
80.00	at Brook 8 links wide Course S.	at Hickory 10 in. Dr. bears N. 54. E. 23 links		80.00	at Beech 9 in. Dr. bears N. 7. E. 20 links
	at Beech 10. " " S. 48. W. 21. "				at So. 15 in. " " S. 67. W. 9 "
40.00	Set Post corner to Sec. 35 & 36. from which			80.00	at Beech 12 in. Dr. bears S. 68. E. 24 links
	at Beech 10. " " S. 48. W. 21. "				at Sugar 30 in. " " S. 82. W. 57 "
40.00	Set 1/4 sec. Post from which			39.00	at Creek 5 links wide Co. S. W.
	at N. Oak 18 in. Dr. bears S. 80. W. 37 links			40.0	Set 1/4 section Post from which
	at Beech 12. " " N. 17. W. 38 "				at Hickory 8 in. Dr. bears N. 78. E. 19 links
80.00	Set Post <sup>corner to 34 &amp; 35</sup> Section 34 & 35 from which				at So. 9 in. " " N. 57. W. 28 "
	at So. 18 in. Dr. bears N. 37. E. 19 links			53.50	at Spring Branch 4 links wide Co. S.
	at Beech 14 in. " " S. 25. W. 17 "			80.00	Set Post. corner to Sec. 31 & 32. from which
40.00	Set 1/4 section Post from which				at Beech 11 in. Dr. bears N. 67. E. 41 links
	at Sugar 30 in. Dr. bears N. 63. W. 57 links				at So. 18 in. " " S. 41. W. 27 "
	at So. 27 in. " " S. 54. E. 23 "			40.00	Set 1/4 section Post from which
55.00	at Creek 30 links wide Co. South.				at Hickory 9 in. Dr. bears S. 43. E. 13 links
80.00	Set Post. corner to sections 33 & 36. from which				
	at Beech 9 in. Dr. bears N. 15. E. 16 links				
	at Beech 20 in. " " S. 7. W. 45. "				

Rolling good farming  
Land rich good  
for farming see the  
Creek similar but not  
Beech Sugar Walnut

and land to be  
Beech Sugar Walnut



at Sugar gin, so bears North 35 links.

45.41 Intersected Range 863 the N. of temp. Township corner  
at Post at intersection from which  
at Walnut 31 in. so bears N. 70. 78. 6 links  
at Birch 10 in. " " S. 55. 6. 17 "

81.00 Set Post Cor. to Township 17 North of Range 233. West  
from which an Elm 15 in. so bears N. 64. 7. 10 links  
at Maple 9 in. so bears S. 12. E. 14 links  
Land and Part west August 9<sup>th</sup> 1878.  
Surveyed by Wm. Harris S. S.

East Boundary. Variation 6. 11. E.

North On East Boundary of Section 36.  
40.00 Set 1/4 section Post from which  
at Beech 11 in. so bears S. 63. E. 30 links  
at do. 14 in. " " S. 87. 7. 33. "

7.00 Entered at Swamp.  
80.00 Set Post Cor. to Secs 25 & 36 from which  
at Walnut 12 in. so bears N. 60. 7. 22 links  
at Maple 10 in. " " S. 84. 7. 20. "

107.00 On East Boundary of Sec. 25.  
at Left the Swamp.

40.00 Set 1/4 section Post from which  
at Spruce 6 in. so bears S. 67. 7. 8 links  
at Birch 9 in. " " S. 85. 6. 12 "

Land similar Land here good for farming timber the same

80.00 Set Post Cor. to Sec. 24 & 25 from which  
an Elm 24 in. so bears S. 50. 7. 32 links  
at do. 27 in. " " N. 20. 6. 43 "

North On East Boundary of Section 24.  
111.00 Set 1/4 section Post from which  
at W. Ash 9 in. so bears N. 85. E. 12 links  
an Elm 11 " " West 33 "

80.00 Set Post Cor. to Sections 13 & 24 from which  
at Beech 12 in. so bears S. 66. E. 23 links  
at W. Oak 48 in. " " N. 63. 7. 6 "

North On East boundary of Section 13.  
38.00 at Brook 10 links wide to West.  
40.00 Set 1/4 section Post from which  
at W. Ash 5 in. so bears N. 78. E. 8 links  
an S. Oak 30 in. " " S. 26. 7. 19 "

80.00 Set Post Cor. to Secs 12 & 13 from which  
at Beech 12 in. so bears S. 63. E. 24 links  
at do 9 in. " " N. 63. 7. 19 "

Surveyed August 20<sup>th</sup> 1878 by  
Wm. Harris S. S.

Land similar to part west

Land the same Part west



West Boundary. Variation 6. 25. E.

North On E. Boundary of Section 36, T. 17, N. R. 3, W.

40.00 Set 1/4 section Post from which  
at Beech 12 in. so bears S. 12. 7. 18 links  
at Sugar 18 in. " " N. 55. 7. 35 "

80.00 Set Post Cor. to Secs 25 & 26 from which  
at Poplar 9 in. so bears S. 2. 7. 19 links  
an Elm 12 " " " N. 32. 7. 31 "

North On E. Boundary of Section 25, T. 17, N. R. 3, W.

40.00 Set 1/4 section Post from which  
at Poplar 45 in. so bears S. 33. 7. 19 links  
at Sugar 8 in. " " N. 13. 7. 31 "

80.00 Set Post Cor. to Sections 24 & 25 from which  
at Beech 11 in. so bears N. 76. 7. 15 links  
at Poplar 36 in. " " N. 59. E. 11 "

North On E. Boundary of Section 24, T. 17, N. R. 3, W.

40.00 Set 1/4 section Post from which  
at Beech 10 in. so bears N. 66. E. 14 links  
at Poplar 30 in. " " N. 56. 7. 5 "

80.00 Set Post Cor. to Sections 13 & 24 from which  
at Beech 10 in. so bears N. 18. E. 11 links  
at do. 9 in. " " S. 5. 7. 24 "

Land level good for farming timber the same

Land the same

North On E. Boundary of Sec. 13, T. 17, N. R. 3, W.

40.00 Set 1/4 section Post from which  
at Sugar gin, so bears N. 65. 7. 11 links  
at do. 18 in. " " S. 36. 6. 21 "

65.00 at Brook 15 links wide S. 7.  
80.00 Set Post Cor. to Secs 12 & 13 from which  
at Sugar 6 in. so bears S. 20. E. 19 links  
at do. 10 in. " " N. 32. E. 18 "

Variation given 6. 10. E. Subdivisions. Variation Range 6. 10. E.

North Between Sections 35 & 36.

29.46 at W. Oak 24 in. Diameter  
40.00 Set 1/4 section Post from which  
at do. 12 in. so bears N. 22. E. 16 links  
an Elm 12 in. " " N. 87. 7. 26 "

61.20 at Sugar 20 in. Diameter

80.00 Set Post Cor. to Secs 25, 26, 35 & 36 from which  
at Beech 14 in. so bears S. 77. E. 32 links  
at do. 15 in. so " " S. 18. 7. 31 "

East On Random Between Secs 25 & 36.

40.00 Set temp. 1/4 section Post.  
50.00 Intersected E. Boundary 80 links N. of Post.

Land level with clearing. River on the boundary. Beech tree at intersection.

Land level to road. Beech tree, Poplar, Walnut, Elm, Oak, Spruce.

Land level to road. Beech tree, Poplar, Walnut, Elm, Oak, Spruce.





*West* Corrected Between Sections 25 & 26.  
 40.30 Set gtr section Post from which  
 a Birch 12 in. Dr. bears N. 22° E. 5 links  
 a Beech 15 in. " " S. 59° E. 30 "

*North* Between Sections 25 & 26.  
 11.00 a Brook 4 links wide Co. S. W.  
 11.00 a Sugar 18 in. Diameter  
 20.00 Set gtr. Sec. Post from which  
 a Sugar 20 in. Dr. bears S. 52° E. 18 links  
 a Beech 13 in. " " S. 13° W. 4 "

*West* On Random Between Sec. 24 & 25.  
 40.00 Set temp. gtr. sec. Post.  
 0.00 Intersected (N. & S. line) E. Boundary 33 links N. of Post.

*West* Corrected Between Sec. 24 & 25  
 40.32 Set gtr section Post from which  
 a Sugar 20 in. Dr. bears S. 30° E. 8 links  
 a W. Ash 30 in. " " N. 27° W. 8 "

*West* 14 To Section Corner.

*Land rich, first 3 miles  
 rolling, last 3 miles level, white  
 Poplar, Beech, Walnut, Spruce  
 Land part rolling, 2 or 3 rate  
 Sugar, Beech, Spruce, Ash, Walnut, Spruce*

*Chains Links*  
*North* Between sections 23 & 24.  
 18.00 a Buckeye 12 in. Diameter.  
 40.00 Set gtr. sec. Post from which  
 a W. Ash 12 in. Dr. bears N. 78° 20 links  
 a R. Oak 14 in. " " S. 40° W. 20 "

57.58 a W. Oak 48 in. Diameter  
 63.60 a Brook 3 links wide Co. S. W.  
 80.00 Set Post Cor. to Sec. 13, 14, 23 & 24 fr. which  
 a Sugar 18 in. Dr. bears S. 69° W. 14 links  
 a Sugar 15 in. " " S. 1° E. 8 "

*East* On Random between sec. 13 & 24.  
 5.00 a Brook 3 links wide course S. W.  
 110.00 Set temp. gtr. section Post  
 80.66 Intersected E. Boundary 50 links N. of Post.

*West* Corrected between sec. 13 & 24  
 40.33 Set gtr. Section Post from which  
 a Hickory 20 in. Dr. bears S. 8° E. 38 links  
 a W. Ash 14 in. " " N. 65° W. 25 "

80.66 To Section Corner June 23<sup>rd</sup> 1820.

*North* Between sections 13 & 14  
 14.46 a Hickory 20 in. Diameter.  
 40.00 Set gtr. sec. Post from which  
 a Sugar 14 in. Dr. bears S. 66° E. 2 links

*Land level, 2 1/2 rate, Beech  
 Sugar, Poplar, Walnut, Spruce*

*Chains Links*  
 a R. Oak 24 in. Dr. bears N. 29° W. 25 links  
 58.04 a Sugar 16 in. Diameter  
 80.00 Set Post Cor. to Section 11, 12, 13 & 14 fr. which  
 a Sugar 14 in. Dr. bears N. 59° W. 33 links  
 a Beech 12 in. " " S. 11° E. 42 "

*East* On Random between sec. 12 & 13  
 40.00 Set temp. gtr. section Post  
 80.68 Intersected E. Boundary 6 links N. of Post.

*West* Corrected Between sec. 12 & 13  
 40.34 Set gtr. section Post from which  
 a W. Oak 30 in. Dr. bears S. 72° E. 15 links  
 a Beech 14 in. " " S. 30° W. 40 "

80.68 Section Corner

*North* Between sections 34 & 35  
 23.20 an Elm 30 in. Diameter  
 40.00 Set gtr. section Post from which  
 a Beech 24 in. Dr. bears N. 88° E. 39 links  
 a Sugar 18 in. " " N. 68° W. 22 "

45.00 a Brook 3 links wide Co. S. W.  
 55.25 a Beech 20 in. Dr.  
 80.00 Set Post Cor. to Sec. 26, 27, 34 & 35, from which  
 a Beech 11 in. Dr. bears N. 60° E. 16 links  
 a So. 12 in. " " N. 39° W. 22 "

*Land level and good rate.  
 White Oak, Beech, Sugar, Spruce  
 Land level, 2 rate  
 Beech, Sugar, W. Oak  
 Undergrowth, Spruce*

*Chains Links*  
*East* On Random Between sections 26 & 35.  
 40.00 Set temp. gtr. section Post  
 80.00 Intersected N. & S. line 15 links N. of Post.

*West* Corrected Between sections 26 & 35.  
 40.00 Set gtr. section Post from which  
 a Beech 15 in. Dr. bears N. 32° E. 32 links  
 a So. 12 in. " " S. 32° W. 18 "

80.00 Section Corner

*North* Between sections 26 & 27.  
 5.00 a Brook 5 links wide Co. West. S. W.  
 19.06 a W. Oak 20 in. Diameter.  
 40.00 Set gtr. section Post from which  
 a Beech 12 in. Dr. bears N. 62° E. 5 links  
 a So. 14 in. " " N. 56° W. 2 "

62.50 a Hickory 18 in. Diameter.  
 69.00 a Brook 4 links wide Co. S. E.  
 80.00 Set Post Cor. to Sec. 22, 23, 26 & 27, from which  
 a Sugar 15 in. Dr. bears N. 32° E. 24 links  
 a Beech 14 in. " " N. 31° W. 3 "

*East* On Random Between sec. 23 & 26.  
 36.00 a Brook 5 links wide Co. S. E.  
 46.00 Set temp. gtr. section Post  
 80.06 Intersected N. & S. line — links N. of Post.

*Land and timber  
 5  
 Land and timber the  
 same as at the head*



6  
 West Corrected Between Sections 23 & 26.  
 40.00 Let gr. section post from which  
 a Beech 24 in. dr. bears S. 75° W. 20 links  
 a Do. 20 in. " " N. 57° E. 16 "

North Between Sections 22 & 23.  
 11.26 a Poplar 36 in. Diameter  
 40.00 Let gr. section Post from which  
 a Maple 12 in. dr. bears N. 20° E. 23 links  
 a Beech 12 in. " " S. 41° E. 14 "

East On Random Between Sects 14 & 23.  
 10.00 Let temp. gr. section Post  
 80.30 Intersected the N. & S. line 4 links N. of Post

West Corrected between Sects 14 & 23.  
 40.15 Let gr. section Post from which  
 a Hickory 18 in. dr. bears N. 7° E. 14 links  
 a W. Oak 18 " " " S. 18° W. 6 "

80.30 Section Corner  
 June 25<sup>th</sup> 1820.

Land nearly the same.  
 Beech, Sugar, Poplar, Spice

Land rolling and rich  
 Beech, Sugar, Poplar, Walnut, Spice

Chains  
 Links  
 North Between Sects 14 & 15  
 6.50 a Branch of Cel. River 20 links wide Co. S. W.  
 40.00 Let gr. section Post from which  
 a Walnut 20 in. dr. bears N. 37° W. 5 links  
 a Sugar 12 in. " " S. 25° W. 12 "

East On Random between Sects 11 & 14  
 20.09 a Brook 3 links wide Co. S. E.  
 32.00 Cel. River 30 links wide S. E.  
 80.25 Intersected E. boundary (N. 15° line) 3 links N. of Post

West Corrected between Sects 11 & 14.  
 40.12 Let gr. section Post from which  
 a Red Oak 40 in. dr. bears S. 50° W. 10 links  
 a Beech 8 in. " " S. 19° E. 15 "

North Between Sects 33 & 34  
 17.50 a Beech 12 in. Diameter  
 40.00 Let gr. section Post from which  
 a W. Oak 15 in. dr. bears N. 30° E. 3 links  
 a Beech 14 in. " " S. 37° W. 20 "

Land rolling & rich  
 W. Oak, Sugar, Walnut & Spice

Land rolling  
 & good  
 Poplar  
 rate, W. Oak, Sugar  
 Umbrella  
 Spice

Land level & rich  
 Beech, Sugar  
 Walnut, Poplar  
 & Spice

Chains  
 Links  
 66.90 a Bur Oak 18 in. Diameter  
 80.00 Let Post Corner to Sects 27, 28, 33 & 34 from which  
 a Beech 16 in. dr. bears N. 52° E. 22 links  
 a W. Oak 36 in. " " South 20 inks.

East On Random between Sects 27 & 34  
 40.00 Let temp. gr. section Post  
 76.50 a Brook 4 links wide Co. S. E.  
 80.38 Intersected N. & S. line 17 links N. of Post.

West Corrected Between Sects 27 & 34.  
 40.19 Let gr. section Post from which  
 a Sugar 24 in. dr. bears S. 27° E. 41 links  
 an Elm 14 in. " " N. 50° W. 50 "

North Between Sections 27 & 28.  
 20.80 a Beech 12 in. Diameter  
 40.00 Let gr. section Post from which  
 a Beech 10 in. dr. bears S. 31° W. 10 links  
 a Sugar 12 " " " N. 57° W. 55 "

76.30 a Poplar 30 " Diameter  
 80.00 Let Post Corner to Sects 21, 22, 27 & 28 from which  
 a Sugar 14 in. dr. bears N. 00° E. 13 links  
 a Sugar 10 in. " " S. 14° W. 31 "

Land Timber almost by gone  
 Beech, Sugar, Umbrella, Poplar

Land level & rich  
 Sugar, White Walnut  
 a Sugar, Umbrella, Poplar, Spice

Chains  
 Links  
 East On Random Between Sects 22 & 27  
 40.00 Let temp. gr. section Post  
 76.00 a Brook 3 links wide Co. S. E.  
 80.40 Intersected N. & S. line 10 links N. of Post

West Corrected Between Sects 22 & 27.  
 40.20 Let gr. section Post from which  
 a Poplar 36 in. dr. bears N. 70° W. 14 links  
 a Beech 24 in. " " N. 70° E. 18 "

North Between Sections 21 & 22.  
 7.50 Cel. River 20 links wide Co. S. W.  
 27.75 a W. Oak 24 in. Diameter  
 40.00 Let gr. section Post from which  
 an Elm 20 in. dr. bears S. 14° E. 15 links  
 a Do. 14 " " " N. 28° W. 21 "

East On Random between Sects 15 & 22.  
 32.00 Cel. River 20 links wide Co. S. W.  
 40.00 Let temp. gr. section Post  
 80.30 Intersected N. & S. line 40 links N. of Post.

Land level & rich  
 W. Oak  
 Poplar, Walnut & Sugar  
 Umbrella & Spice

Land level & good  
 W. Oak, Sugar & Spice

Land rolling &  
 rich  
 Walnut  
 Sugar, Poplar  
 W. Oak & Spice



3

West Corrected between Secs 15 & 22  
140.15 Set gtr. Section Post from which  
a Beech 12 in. dr. bears N. 51. E. 25 links  
a do. 20 in. " " S. 12. W. 11 "

North Between Sections 15 & 16.  
40.00 a Beech 15 in. diameter  
40.00 Set gtr. Section Post from which  
a Yucca 36 in. dr. bears N. 39. E. 30 links  
a Bl. Ash 14 in. " " S. 75. W. 37 "

East On Random Between Secs 10 & 15.  
40.00 Set temp. gtr. Section Post.  
40.40 a Brook 3 links wide co. S.  
50.26 Intersected N. S. line 2.3 links N. of Post.

West Corrected Between Secs 10 & 15.  
40.10 Set gtr. Section Post from which  
a Beech 10 in. dr. bears N. 41. E. 2 links  
a Sugar 12 in. " " S. 73. W. 30. "

Land level to rate track  
Poplar, Beech, Yucca  
Unlabeled  
Land rolling to good rate  
Walnut, Oak, Beech, Yucca & Spice

Chains Links

North Between Sections 22 & 33.  
14.35 a Spring Run course S. W.  
18.34 a Beech 12 in. diameter.  
25.50 a Spring Run Co. S. W.  
40.00 Set gtr. Section Post from which  
a Beech 16 in. dr. bears S. 54. W. 21 L.  
a do. 16 in. " " N. 57. E. 32 L.  
60.39 a Sugar 12 in. diameter.  
80.00 Set Post Corner to Secs 29, 29, 32 & 33. for which  
a Beech 12 in. dr. bears East 11 L.  
a do. 12 in. " " S. 20. W. 5 L.

East On Random Between Secs 28 & 33.  
4.00 a Spring Run 2 links wide co. N. W.  
11.00 a Brook " " " N. W.  
40.00 Set temp. gtr. Sec. Post.  
80.30 Intersected N. S. line 3 links N. of Post

West Corrected Between Secs 28 & 33.  
40.15 Set gtr. Sec. Post from which  
a Beech 11 in. dr. bears S. 33. W. 32 L.  
a do. 11 " " " N. 16. W. 39 L.  
80.30 To Section Corner

North Between Sections 28 & 29.  
4.10 a Spring Branch N. Co. N. W.

Land level to rate  
N. Oak, Beech, Yucca, Bl.  
Walnut & Spice  
Land rolling to good rate  
N. Oak, Sugar, Beech, Poplar & Spice

Chains Links

16.50 Eel River 2.5 links wide co. S. W.  
35.25 a Poplar 24 in. diameter.  
40.00 Set gtr. Sec. Post from which  
a Beech 16 in. dr. bears N. 32. E. 27 L.  
a do. 12 in. " " S. 39. W. 29 "

East On Random Between Secs 21 & 28  
4.10 a Spring Course S. E.  
11.05 a do. Branch " " S. E.  
40.00 Set temp. gtr. Section Post.  
47.05 a Brook 3 links wide co. S. E.  
56.30 Eel River 25 " " " S. W.  
80.28 Intersected N. S. line 8 links N. of Post

West Corrected Between Sections 21 & 28.  
40.14 Set gtr. Section Post from which  
an Elm 12 in. dr. bears S. 65. E. 26 L.  
a do. 10 in. " " North 10 links  
80.28 To Section Corner

Land rolling to rate  
White Walnut, Poplar, Yucca  
Unlabeled  
Land rolling to good rate  
Walnut,  
Sugar, Poplar & N. Oak & Spice

Chains Links

North Between Sections 20 & 21.  
15.20 a N. Oak 18 in. diameter.  
40.00 Set gtr. Section Post from which  
a Sugar 10 in. dr. bears S. 75. W. 13 L.  
a do. 10 in. " " N. 6. E. 12 "

East On Random Between Secs 16 & 21.  
110.00 Set temp. gtr. Section Post.  
80.21 Intersected N. S. line 18 links N. of Post.

West Corrected Between Secs 16 & 21  
40.10 Set gtr. Sec. Post from which  
a Sugar 10 in. dr. bears S. 28. W. 11 links  
a Beech 13 in. dr. " " N. 14. E. 12 "

North Between Sections 16 & 17.  
12.00 a Sugar 10 in. diameter  
40.00 Set gtr. Sec. Post from which  
a Beech 10 in. dr. bears S. 28. E. 5 links  
a do. 16 in. " " N. 66. W. 11 "

Land level to rate  
N. Oak, Beech, Yucca  
Unlabeled  
Land rolling to good rate  
Walnut, Yucca, Beech  
Unlabeled  
Land rolling to good rate  
Walnut,  
the corner is east  
Unlabeled

9



50.00 At Post Corner to Sect 8, 7, 16 & 17 from which  
a Beech 20 in. dr. bears S. 75° E. 24 links  
a Sugar 15 in. " " N. 71° W. 26. "

Post On Random Between Sect. 9 & 16.  
40.00 Set temp. for Section Post.  
80.18 Intersected N. & S. line 28 links N. of Post.

West Corrected Between Sect. 9 & 16.  
40.09 Set for Section Post from which  
a Beech 12 in. dr. bears S. 5° E. 16 links  
a Sugar 15 in. " " N. 54° E. 16 "

North Between Sect. 31 & 32.  
29.55 a Beech 20 in. Diameter  
40.00 Set for Section Post from which  
a Sugar 18 in. dr. bears N. 50° E. 17 links  
a Beech 12 in. " " S. 40° W. 32 "

60.00 a Brook 3 links wide co. S. E.  
60.04 a W. Oak 24 in. Diameter.  
77.50 a Brook 3 links wide co. S. E.  
8.00 Set Post Corner to Sect. 29, 30, 31 & 32, from which  
a Beech 8 in. dr. bears N. 40° W. 15 links  
a Sugar 12 in. " " S. 75° E. 12 "

Chains Links  
East On Random Between Sect. 29 & 32.  
20.50 a Spring Run course S. E.  
27.30 a Sugar 15 in. " " S. E.  
40.00 Set temp. for Section Post  
63.50 Oak River 25 links wide co. S. E.  
80.51 Intersected N. & S. line 20 links N. of Post.

West Corrected Between Sections 29 & 32.  
20.25 Set for Section Post from which  
a Sugar 16 in. dr. bears S. 65° W. 15 links  
a Beech 12 in. " " N. 31° W. 11 "

West Between Sections 30 & 31.  
2.01 a Brook 3 links wide co. S. E.  
17.00 a Sugar 12 in. Diameter.  
40.00 Set for Section Post from which  
a Bl. Ash 18 in. dr. bears N. 11° E. 7 links  
an Elm 16 in. " " S. 80° W. 14. "

65.80 a W. Oak 36 in. Diameter  
80.50 Intersected West Boundary 100 links S. of Post, where  
Set Post Cor. to Sections 30 & 31, from which  
a Hickory 20 in. dr. bears N. 51° E. 30 links  
a W. Oak 36 in. " " S. 3° W. 32 "

Land rolling  
Spruce, White Oak, Poplar  
Sugar, Undergrowth

Land level Spruce  
Beech Sugar Poplar  
Undergrowth

Land & timber same as last day  
Land rolling  
Spruce, Beech, Poplar  
Sugar

Chains Links  
North Between Sections 29 & 30  
9.00 an Elm 18 in. Diameter.  
40.00 Set for Section Post from which  
a W. Ash 12 in. dr. bears N. 61° W. 5 links  
a Sugar 10 in. " " N. 71° E. 30. "

East On Random Between Sect. 20 & 29.  
33.80 a Brook 3 links wide course S. E.  
40.00 Set temp. for Section Post from which  
80.48 Intersected N. & S. line 10 links N. of Post.

West Corrected Between Sections 20 & 29.  
40.24 Set for Section Post from which  
a Sugar 14 in. dr. bears S. 25° E. 13 links  
a Sugar 13 in. " " N. 41° E. 35. "

West Between Sections 19 & 30.  
8.00 Entered a Swamp.  
15.00 Left the Swamp.  
19.09 a W. Oak 19 in. Diameter.  
40.00 Set for Section Post from which

Land the same. Timber  
W. Oak, Sugar, Poplar, Beech  
Undergrowth  
Land level & 29 Rate  
W. Oak, Beech, Sugar, Ash  
Undergrowth  
Land the same:  
W. Oak, Poplar  
Beech & Sugar  
Undergrowth

Chains Links  
a Spruce 28 in. dr. bears East 3 links  
a Beech 10 in. " " N. 14° E. 16 "  
57.00 a Beech 10 in. Diameter.  
80.65 Intersected W. Boundary 115 links S. of Post, where  
Set Post Cor. to Sections 19 & 30, from which  
a W. Oak 18 in. dr. bears N. 20° E. 29 links.  
a Beech 10 in. " " N. 41° W. 22. "

North Between Sections 19 & 30.  
22.25 a Poplar 36 in. Diameter  
40.00 Set for Section Post from which  
a Beech 10 in. dr. bears West 14 links  
a Hickory 12 in. " " N. 19° E. 6. "

East on Random between Sections 17 & 20.  
40.00 Set temp. for Section Post  
80.52 Intersected N. & S. line 7 links N. of Post

West Corrected between Sections 17 & 20.  
40.26 Set for Section Post from which  
a W. Oak 36 in. dr. bears S. 60° E. 12 links  
a Beech 14 in. " " N. 50° W. 30 "

Land the same.  
W. Oak, Poplar, Sugar  
Undergrowth  
Land the same as last day  
W. Oak, Beech, Sugar  
Undergrowth





West Between Sections 18 & 19.  
 23.82 a Beech 12 in. Diameter.  
 38.10 a Brook 4 links wide cor. N. W.  
 48.00 Set qtr. Section Post from which  
 a Sugar 20 in. Dr. bears S. 14. E. 3 links  
 a Beech 12 " " N. 5. E. 14 "  
 68.20 a Beech 15 " Diameter  
 68.30 a Brook 4 links wide cor. N. W.  
 80.57 Intersected West boundary 133 links S. of Post &  
 Set Post cor. to Sect. 18 & 19 from which  
 a Hickory 24 in. Dr. bears N. 41. E. 7 links  
 a Beech 16 in. " " S. 30. W. 25 "

Land the same as last survey  
 the same as last survey

North Between Sections 17 & 18  
 18.17 a Red Oak 30 in. Diameter  
 18.00 Set qtr. Section Post from which  
 a W. Oak 12 in. Dr. bears S. 68. W. 9 links  
 an Elm 18 in. " " N. 15. W. 19 "  
 64.82 a W. Oak 24 " Diameter  
 80.00 Set Post cor. to Sect. 7, 8, 17 & 18. from which  
 a Sugar 14 in. Dr. bears N. 31. E. 7 links  
 a So. 10 " " S. 47. W. 31. "

Land the same as last survey  
 the same as last survey  
 W. Oak, Beech, Sugar, Poplar, Spruce

East An Random Between Sect. 8 & 17.  
 111.00 Set temp qtr. Section Post.  
 80.57 Intersected N. Line 35 links S. of Post.

Chains Links  
 West Corrected Between Sect. 8 & 17.  
 40.282 Set qtr. sec. Post from which  
 a Walnut 20 in. Dr. bears N. 7. E. 10 links  
 a Beech 6 in. " " S. 80. W. 31. "  
 80.57 To Section Corner

Land the same  
 W. Oak, Walnut  
 Beech, Sugar, Spruce

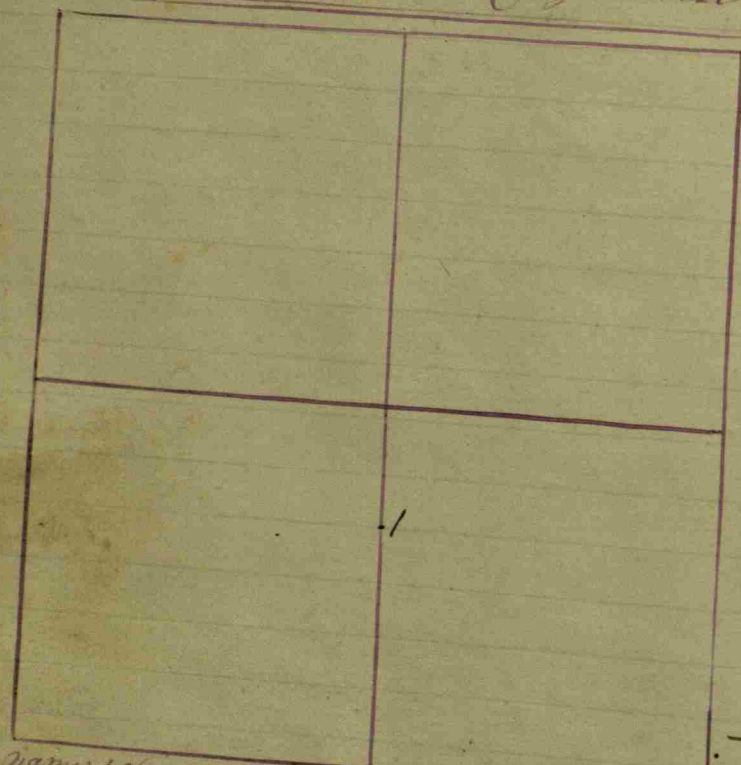
West Between Sections 7 & 13.  
 25.10 a W. Oak 140 in. Diameter.  
 40.00 Set qtr. Section Post from which  
 a Sugar 14 in. Dr. bears N. 31. E. 7 links  
 a So. 8 in. " " S. 63. W. 19 links  
 64.90 a Red oak 24 in. Diameter  
 80.62 Intersected West Boundary 150 links S. of post  
 where Set Post cor. to Sect. 7 & 18 from which  
 a Beech 12 in. Dr. bears S. 32. E. - links  
 a Sugar 8 in. " " S. 21. W. 4 "

Land the same  
 W. Oak, Beech, Sugar  
 Ash & Spruce

Surveyed July 1<sup>st</sup> 1830  
 by J. Collett. Dep. Surv.



Section 13 77 North Range 2 West.



Owner's name &c.	Cor. Witness	Dr.	Bearings	Links
Center N. of S. 1/4	13 aBuck	20	N. 46. E	38
	2a Syna	18	S. 19. E	15
Center S. of S. 1/4	a Hickory	20	N. 29. W	27
	2a B. Ash	....	S. 110. W	15
Center N. N. E. 1/4	aBuck	22	N. 68. E	11
	2a Do.	8	S. 50. W	17
Center S. of N. E. 1/4	a Hickory	20	S. 39. E	12
	2a W. Ash	8	N. 31. E	9
Section Center	a Sugar	11	N. 37. E	9
	aBuck	11	N. 62. W	14
1/2 mile Post on North Relocated	aBuck	12	N. 77. W	11
	2a Pin Oak	20	S. 75. E	39
	Book B. p. 219			

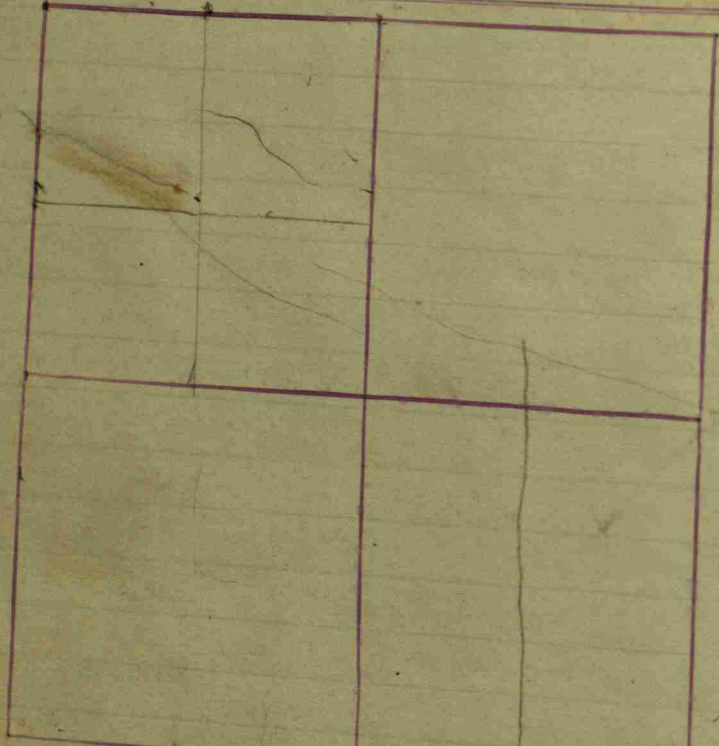
Owner's name &c.	Cor. Witness	Dr.	Bearings	Links
Dale, Kress and Darnall, a survey for.	Old Buck stump	N. 9 W		5 1/2
1/2 mile Post Stone 18x15	Beech	20	N. 68 E.	11
3 cor. stone	B. Walnut	8	S 19 1/2 E	47 1/2
Cor. N. N. E. 1/4	Good Stone			
Cor. N. N. W. 1/4	Sycamore	5	S 4 E	38 1/2
Cor. N. E. 1/4				
Stone 7x9x16				

66 Rods S of Section center a rock 127 6 x 9  
 1 an ash 15 S 12° W 85-

N.E. cor. Sec. found by running & measuring.  
 N. Stone 10x16x16 B. Walnut 10 S. 16 E. 101 links  
 W. Oak 12 N. 18 1/2 E. 180 "  
 J. W. Trotter S. H. Les.  
 May 15/94



Section 14 5 7 North, Range 2 West.



Sections 14, 15, 22  
 James Fowler  
 The Widow Dowd  
 7/8 of the N.W. 1/4 of Sec. 14  
 Also that portion of  
 15 North of the creek  
 West of said N.W. 1/4  
 13 acres off the E. end  
 Sec. 22 in S. 17, 2 that  
 The Dowd is that  
 Sec. 14, and of the E. 1/2  
 of a line across E. 1/2  
 1/2 on the North of the  
 Sec. line between 14 & 15  
 where

Sections 14, 15, 22  
 S. 17 North, Range 2 West.  
 Estate of  
 set off. About 39 acres of the  
 1/4 North of the creek  
 the E. 1/2 of the N.E. 1/4 of Section  
 about 6.5 acres: and the  
 and the 1/2 of the N.E. 1/4 and  
 of the S.E. 1/4 of the N.W. 1/4 of  
 portion of the 1/2 of N.W. 1/4 of  
 of the N.E. 1/4 of said 1/2 lying South  
 48 Rods South of the N. line of said  
 Creek & West of County Road  
 or less, as follows. Beginning on  
 48 Rods South of the 1/2 mile Post  
 an Elm 20 S. 30° E 24  
 a B. Oak 46 N. 43° W 112  
 a Sugar 26 N. 36° W 81  
 a B. Walnut 14 S. 62° E 159  
 Thence S. 14 1/2° E 8 Rods 4 links, Thence  
 Center of the creek, a  
 Post 2 Rods N. 2° W  
 a Willow 10 N. 6 1/2° W 22  
 a Sycamore 10 S. 27 1/2° W 22  
 Thence E. on a straight  
 line 71 Rods but with the center  
 of the meanders of the  
 Creek to the Section line  
 balance next page

Owners names etc.  
 Cen. S. 5. 40. 4. a stone 24x18x16. Cent. a stone under N.W.  
 corner of dwelling house S 43. 6. E. 135 1/2 links  
 A cen. 1/2 N. of cen. 10 of N. 20. 4. Cent. a stump 12" S 33. 5. E. 116 1/2

Sections names etc. Cor. Witnesses. Dr. Bearings links  
 Thence N. about 2 Rods to the North edge of the water,  
 Thence E. & North with on the bank of the North line of the 1/2  
 a Beech 24 N. 23. 1/2 W 46  
 an ash 22 S. 81. 1/2 W 73  
 Thence N. 5 1/2 Rods to the Beginning  
 Book C. p. 307

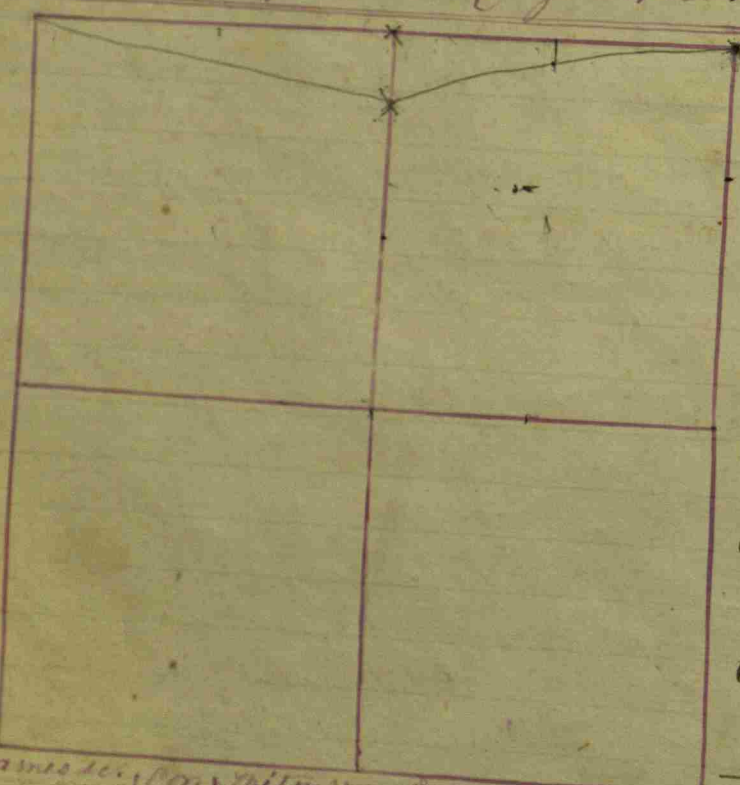
Section 11. 7 11 - 2 11  
 Thence N. 71° E. 3 1/2 Rods  
 or 10 Rods 1/2 links. Thence  
 a 5 links to the West line of  
 Thence South 15 1/4 Rods

Beginning 1/2 Rod South of R. Road.  
 Thence N. 21° E. 12 Rods (less 20 feet)  
 N. 63° W with R. Road line 11 Rods  
 a W. Oak stump 24 N. 20° E 3  
 a Elm 28 S. 47 1/2° E 141  
 to the Beginning; Book C. 321

Cen S SE 1/4 a  
 lime stone  
 N 105 1/2 rods and 4 feet W of  
 Cen S SE 1/4 is a good  
 stone  
 Book C P 383



Section 15 57 North, Range 2 West. Owners names &c. Cor. Witnesses &c. Bearings & links



Witnesses &c.	Bearings	Links
1/2 mile Post on E side Relocated from old stump.		
a Stone 12 m. tapering at top	a Sugar 12 S. 83° W 23	
	a Do. 14 N. 44 1/2° E 41 1/2	
1/2 mile Post N. Relocated the roots of the Sugar, & others: all parties satisfied.	old trees all gone; dug & found so said by Macintosh, Johnson	
Tapering some both ways, small at top	Stone 30 long, largest in the middle.	
Center of Sect. Stone 6+10	a W. Oak 26 S. 83° E 187	
N. 1/4 Center N.	a Sugar 15 S. 79° E 38	
Stone 20+12 flat.	a W. Oak 24 S. 39 1/2° W 73	
Center of N. 1/4	a Walnut 10 N. 82° E 268	
Stone 20+16 tapering	a Buck 10 S. 87 1/2° W 203	
	a Beech ... N. ... W 71	

Commencing at the S. E. Cor. of the N. E. 1/4 of the N. W. 1/4 of Sect. 22 & running 1/4 1/4. & continuing N. 74° 44' 44' Rods to East S. 25° 1/2' 43 Rods to the at a point 7 Rods 20' lin. Thence S. 22 1/2° W along said N. 1/4 N. 1/4 North 7 Rods to E. Bank of Tel. Run. & arounds thereof to the line quarter. Thence East 19 Rods to S. W. corner of N. E. 1/4 said N. 1/4. & continuing 80 Rods to Beginning. Book C. p. 210



Witnesses &c.	Bearings	Links
Mariah Walker		
Mariah Walker		
Mariah Walker		
of the N. E. corner of 1/4		
a cross said E. p. 1/4 1/4		
Thence East 55 Rods		
in a N. 28 1/2° E.		
containing 16 acres		

tract commencing 76 Rods South of N. 1/4. Thence West 80 Rods a Walnut 3 S. 56 1/2° E 48 a Walnut 10 N. 52 1/2° E 73 to the Beginning. more or less. Book C. p. 188

Owners names &c. Cor. Witnesses &c. Bearings & links  
 From the various evidences gathered & established the former on the old by Huff on page 120 of Stamp being plain, and the course & distances cross + + planted a Stone distant to center, intended witness stood, being 4 1/2 m according to my coursing & 3 links East of the center the Section corner Center N. of N. 1/4 of Section where Huff had one Relocated, but which was on the ground loss & supposed the distance of the Beech with our coursing and witness being right, and agreeing measurement N + S through thely. Book C. p. 283

Took Huff's Section to 1/2 mile Post, witness about 3° 45' ... center 1/4 of Section Center Stone 28 + Thence S. at about 45° 45' Center of S. 1/4 Stone 20 + Center of N. E. 1/4 by balance at top.

Owners names &c. Cor. Witnesses &c. Bearings & links  
 nearly rotten. Put in the corner. Note: last named corner is really in center E of center of Section 16. Book C. p. 280

Witnesses &c.	Bearings	Links
a Stone 15+12+9 about E. W. of the corner.		
a Sugar 10 S. 40 1/2° E 53 1/2		
a Hickory 18 N. 18° E 29		
Book C. p. 280		

James Potter Estate of (Deceased) Beginning 48 Rods and of the 1/4 at the NW corner Thence North 15 1/2° E 47 where about 96 Rods S. of Sect. center to Road Thence East 88 1/2 Rods Thence N. 2° W. 37 Rods 11 lin. to the Meadows corner. On within 44 Rods of Sect. center Thence South 96 Rods North from center S. Thence N. 60° E 11 Rods N. 2° W. 27 Rods 14 lin. SW corner of 4th Set is 16 where a corner 52 Rods where then turnover

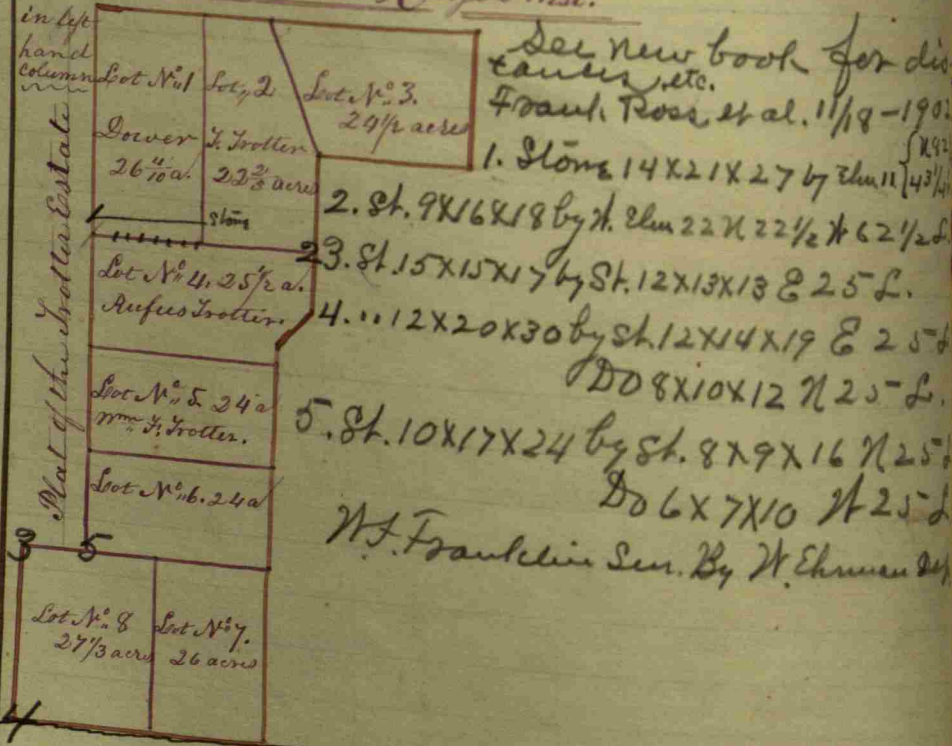


Section 15 T17 North, Range N2 West.

Center names	Cor.	Bearings	Links
Center East of Center	at Walnut	6 N. 63° W	10
Center of N 8 1/4	at Sugar	24 S. 77° W	412
	at Ditto	20 N. 32° W	57
West 52 Rods	at M. Oak	24 N. 25 1/4° W	78
	at Oak	12 S. 1 1/2° E	51
North from Center on	at B. Walnut	12 S. 7 1/2° E	127
Thence East across the	at Quarry	3 S. 32 1/2° E	88 1/2
Refus. Lot 5 M. corner	at M. Oak	38 S. 46 1/4° W	53
and at Stone 12 x 10 x 8	South at M. cor. between the 2		
West Lots is at Stone	24 x 15 x 10		

40 Rods E of center S 8 1/4 a well S 33 W 11 feet  
 Aug. 27th 1897. A survey for Wilson & Free.  
 Samuel Cook & Harry Hop sworn as chainmen,  
 for Ashley & Lewis.  
 Beginning 80 ft. S. of cen. of Section (on a true  
 meridian) at corner with Bryan Corn 42 North 2 1/4° W  
 Thence S. 51 1/2° W, 241 ch. Thence S. 7 1/2° W, 450 ch. Thence  
 S. 44 1/2° W, 307 ch. to N. bank of creek, at a point west by a  
 B. Ash. 8 1/2° N, 27° W, 182. Thence S. 61 1/2° W, 210 ch. Thence  
 S. 21° W, 153 ch. to top of a large stone thence South  
 138 ch. to a point west by a stone 37 1/2 inches  
 west on the bluff, (the above line fixed by the  
 agreement of parties. G. H. G. 1897.)

a Continuation of Section 15, T17, North, Range 2 West.



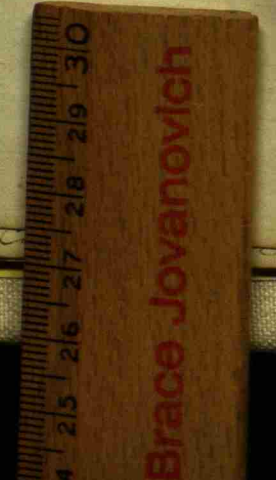
See new book for details  
 4 Paul Ross et al. 11/19-1902  
 1. Stone 14x21x27 by Elm 11 1/2 x 14 1/2  
 2. St. 9x16x18 by N. Elm 22 x 22 1/2 x 62 1/2  
 3. St. 15x15x17 by St. 12x13x13 & 25 L.  
 4. 12x20x30 by St. 12x14x19 & 25 L.  
 5. St. 10x17x24 by St. 8x9x16 N 25 L.  
 6. 6x7x10 N 25 L.  
 W. Franklin Sen. By W. Ehrenman

at NW cor sec a good stone well set  
 Relocated by running the line from the N  
 and the S and dividing the distance and  
 also measuring 40.37 c N from N 1/2 mi stone  
 the distance called for in our old deed.  
 Book C P 392

Lovry Estate - Survey for - Apr. 1893

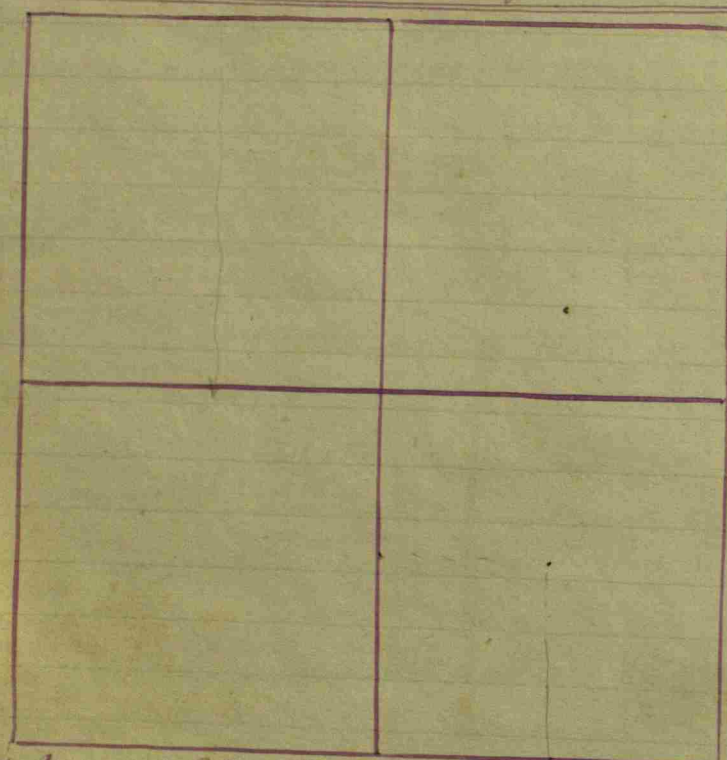
- 10.48 2/3 Ch. East of N 1/2 mile stake  
Stone 12 x 18
- 10.78 1/2 Ch. South of N 1/2 mile stake  
Stone 4 x 16 x 32
- Thence East 10.48 2/3 chains to a  
Stone 8 x 12 x 20
- 10.78 1/2 Ch. South of N.E. corner of Sec. 15  
Stone 6 x 12 x 18  
Hit Stone South 22 links
- 3.75 Ch. East of N 1/2 mile stone  
Stone 6 x 16 x 18  
Cottonwood 24 South 136 links  
Pine 5 N. 84° East 114 "
- 6.88 1/2 Chains East of N 1/2 mile stone  
Stone 24 inches long and 3 corners  
Hit Stone 12 N. 73 3/4 W. 32 links
- 14.64 1/2 Chains East of N 1/2 mile stake  
Stone 8 x 8 x 16

J. H. Trotter, S. H. Co.





Section 16, T7 North, Range N. 2 West.



Owners names &c.	Cor.	Witness	Dr.	Bearings	Links
Center N. of center	Sec. 16	a Beech	12	N. 26° W	15 7/8
Stone 12+10 tapering to a point		2 a Beech	18	S. 44° W	6 1/2
Center of Section		a Beech	11	N. 12° E	17 3/4
		2 a Poplar	36	S. 84° E	10 1/4
Center E of center		a Hickory	24	Comd. S. W. side	
S. E. cor. of Sec. Relocated					
Stone 16+12 Round		a W. Oak	24	S. 16 1/2° E	82 1/2
S. E. 1/4 Center E.		a Beech	15	N. 73° E	23
		2 a Do.	22	S. 42° W	70
Center S of Center		a W. Oak	22	S. 65 1/4° E	96
Stone 18+14 Square		2 a Water Beech	4	S. 17° W	25
S. W. 1/4 Center N.		a Elm	24	N. 24° W	37 1/4
Stone 20 long round		2 a Do.	30	S. 88° W	40
Center of S. E. 1/4		a W. Oak	38	N. 37 1/2° W	87
Stone 27+15. 1 side square		2 a Do.	22	S. 48 1/2° W	79 1/2
N. E. 1/4 Center N. Stone		24+16 tapering to a point at both ends 2 a square			
		a Beech	15	S. 41 3/4° W	64
		2 a Hickory	15	N. 20° E	65 1/2
Center of N. E. 1/4 Stone 35+15		a W. Oak	6	N. 23 1/2° E	44 1/2
tapering at both ends		2 a B. Oak	8	S. 86 1/2° E	58 1/2
N. E. 1/4 Center E. Stone		a Poplar	20	S. 34 1/2° E	47
a Round boulder 20.		2 a Walnut	36	N. 15° W	39
N. W. Corner of Section		Relocated from old stump.			
Stone 23+15. one side flat		a Sugar	15	S. 2° E	105
the bottom round notch in the top		2 a Walnut	6	N. 33 1/2° E	69

Balance on next page

Aug. 23rd, 1887. A survey for Margaret D. Jones et al.  
 1. The N. E. 1/4 of NW 1/4 run + found to be 192. short at W. end and 66 links long at S. E. corner. Then set off 20 ft. off of W. end of NW 1/4 of NW 1/4 as follows:  
 9.96 3/8 ch. E. of N. 1/2 mile stone set Stone to N. E. cor. of the 20 A. The stone 6x15x20 and rough.  
 with by B. Walnut 8" S. 27 1/2° E 114  
 9.96 3/8 ch. E. of cen. N. of sec. cen. or S. E. cor. of the 20 A. a stone set 10x14 and  
 with by a stone 13 links W. outline  
 + " " " " 14 " N. outline  
 P. M. Eads + Mason Daubenspeck sworn as examiners.

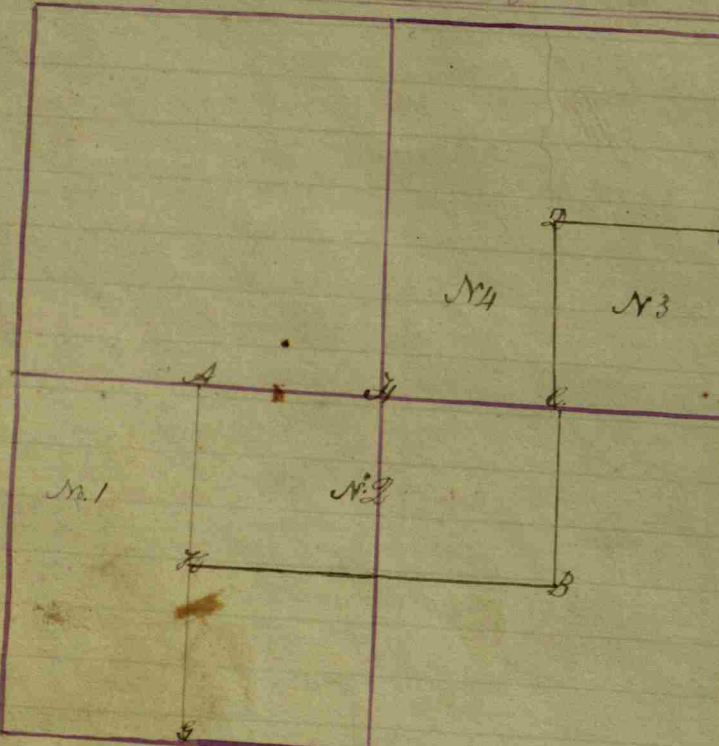
Owners names &c.	Cor.	Witness	Dr.	Bearings	Links
N. W. 1/4 Center N. Stone 24		a W. Oak	20	N. 63 1/2° W	137
+ 17 Square		2 a B. Oak	12	S. 49 1/2° E	95 1/4
Center of N. W. 1/4 Stone 26					
+ 18. Tapering to the top		a Walnut	5	S. 62 1/2° E	62 1/2
Center N. of Center Stone 19+15 at bottom. + tapering to the top		a Walnut	3	S. 8 1/2° W	21 1/2
		a Elm	10	N. 82 1/2° E	107 1/2

Back of p. 112

Owners names &c. Cor. Witness Dr. Bearings Links



Section 17 T7 North Range N. 2 West. Owners names &c. Corn. Witnesses Dr. Bearings Links



No.	Owner Name	Witness	Dr.	Bearings	Links
No. 1	Agred Owens	a Beech	17	S. 23° W	11
		a Do.	12	N. 78° E	11
No. 2	Gardner Clark	B. a. Oak	28	S. 11° W	11 1/2
		a Beech	11	N. 11° E	20
		C. a. B. Oak	16	S. 34° W	20
		a Do.	10	N. 34° E	25
No. 3	Samuel Jones	D. a. Sugar	11	S. 77° E	10
		a Do.	10	North	26
		E. a. Beech	21	S. 76° E	9
		a Sugar	15	N. 76° W	47
No. 4	James M. Dutch	F. S. Ash	36	S. 48° W	9
		a Buckeye	14	N. 55° W	20
		G. a. Beech	13	N. 26° W	28 1/2
		a Do.	10	East	22 1/2
		H. a. Beech	18	S. 8° E	24
		a an Elm	15	N. 3° E	28
				Book B. p. 217	

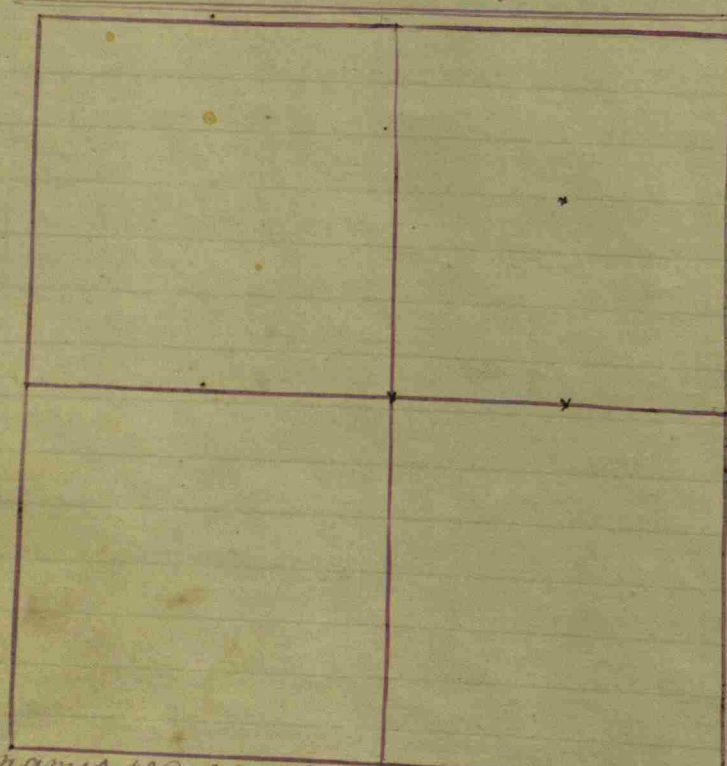
Owners names &c. Corn. Witnesses Dr. Bearings Links  
 Cen 2 cen relocated from old wit stumps  
 a stone promised C  
 Cen No. 4, a stake D  
 Book C p. 390

Owner Name	Witness	Dr.	Bearings	Links
John Kilroy & Malinda Mount a Surveyor				
Cen. E. of S. E. 1/4	Stone		N. 62° W	27 L.
Stone 10x12x16	Do		S. 37 1/2° W	34 L.
Cen. S. of Cen.	Stone		S 89 3/4° E	28 L.
Stone 12x27	Do		S 80° W	21 L.
Cen. E. of Cen.				
Stone 8x10x16	B. Oak	28	N. 36 1/2° W	34 1/2 L.
Cen. of S. E. 1/4	Stone		East	25 L.
Stone 8x12	By old Cor. Stone		S. 15° W	28 1/2 L.

Note the last cor. above is N. 15° E. 28 1/2 L. from the supposed old corner.  
 J. W. Trotter Surveyor of Hendricks County.



Section 18 T7 North, Range 2 West.



Owner's name & c.	Cor.	Witness	Dr.	Bearings	Links
The N.W. Cor. of County	Relocated.			Section 18	
Lime Stone 26 x 18 inches	a Beech	18	S. 19° E	45	
	La Do.	3	N. 67 1/2° E	40	
Center N. of S.E. 1/4 of Section 18	a white	18	N. 83° W	16	
1/2 mile Post N. of section	a Walnut	20	S. 67° E	47	
7 1/2 poles S. full 1/2 mile	a Beech	18	N. 23 1/2° E	26 1/2	
Center E. of the center	a W. Oak	60	S. 51 1/2° E	18 1/2	A flat Lime Stone 26 x 18
a lime Stone 18 x 8.	a W. Oak	20	S. 88° W	19	
Center of the Section	a Sugar	16	N. 67 1/2° E	29	
a Boulder Rock 28 x 18	a Beech	19	N. 43° E	41	
Center N. of center	a Do.	7	S. 20° E	3 1/2	
a Lime Stone 26 x 15	a Beech	24	N. 19° E	7 1/2	
Center N. of N.W. 1/4	a Cherry	4	S. 1° W	11 1/2	
a Lime Stone 15 x 13	a Beech	28	S. 38° E	22 1/2	
N. 1/2 Post a Stone 24 x 20	a Do.	18	S. 42 1/2° W	33	
Ottoman 1/2 of the	N.W. 1/4				
Pierce 7 1/2 of the	N.E. 1/4				
				Beck Cop. 44	
N 34 1/2 from center	S 83° E, 32 1/4 R, a stone				
center N. E. 1/4	a Red Wood, 58 1/2 W			209	
	a good Stone 12 x 18				
	a white walnut 57 1/2 E.			82	
center N. of center	10 x 15 Boulder -				
	a small walnut 56 1/2 W			42 1/2	

Owner's name & c. cor. witness Dr. bearings links  
 34 1/2 Rods North of the centre  
 a stone 10 x 1 1/2  
 a Black Walnut 5 inch  
 26 1/2 E. 22 1/2



Owner's name & c. cor. witness Dr. bearings links  
 thence E. 32 Rods - to a stone 15 x 20  
 witness Stone East on the line 25 1/2.

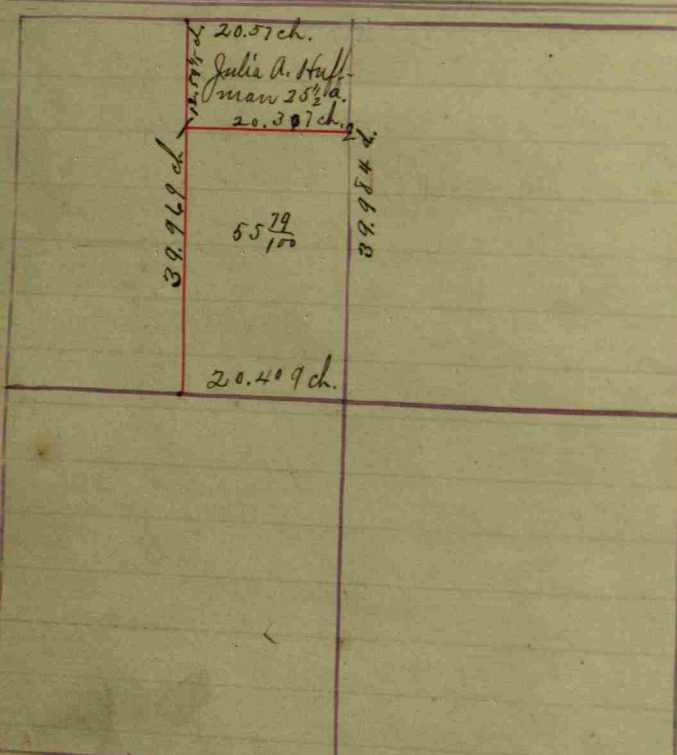
The following is a description of the above survey. Beginning 34 1/2 Rods North of the centre of the sec. 18. S. 17 1/2 R. 2 W thence North 45 1/4 Rods to the centre North of centre. thence East 32 Rods. thence South 41 1/4 Rods to the centre of Road. thence South 83° West with the centre of said Road 32 1/4 Rods. to the place of Beginning. Estimated to contain 866 a. or more or less.

Center S. of S.E. 1/4 Stone South 25 Links  
 Stone 8 x 12 x 16 Elm 6 N. 14 1/2° W. 29 "  
 E. 1/2 mile relocated by measurement on Gov. int.  
 Stone 8 x 20 x 24.

J. H. Trotter, S.H.C.



Section 19 T17 North, Range N<sup>o</sup> 2 West.



Witnesses	Dr.	Bearings	Links
North 1/2 mile a Stone	30+14	West from a Stone 24+18	
112 1/2 links S. of the center	a B. oak	15 N. 15° E	33
	a Beech	14 S. 4° W	17 1/2
Center of the Section a Stone 18+10	a B. oak	36 N. 62° E	56
	a Poplar	38 N. 71° W	64
Center N. of Center South side of a Stone 28+15	a Birch	28 N. 49° W	86
	a Hickory	24 N. 57° E	97 1/2
Center N. of NW 1/4 a Stone 18+12	a Elm	28 N. 85° E	13 1/2
	a Beech	12 S. 81° W	52
S. W. Section Corner Post a Stone 15+12	a Stone	15+9 South from	
Crawfordsville Road	Thence South 20 poles to the		
	a Beech	20 N. 15° E	96
Center S. of NW 1/4 Stone 15+18	a Sugar	20 S. 37° E	68
Center N. of Center a Stone 32+24	a B. oak	30 S. 14° E	92
	a B. oak	24 N. 78° E	145 1/2
N. E. Section corner a Stone 28+15			
Center E. of NW 1/4 a Stone 15+10	a Birch	12 N. 83° W	25
	a Elm	24 S. 19° W	22
		Book C. p. 70	

Witnesses	Dr.	Bearings	Links
Center of Section a Stone 18+10	a B. Oak	36 N. 62° E	56
a Stone 15+12	a Poplar	38 N. 71° W	64
Third 1/2 mile Stone in about 50 acres in S. E. 1/4	Division of Bonneyfield's land, being of Sec. 19: 64 Rods + 19 links South of center		
123 Rods + 11 links S. of center	a Beech	12 N. 61° W	119 1/2
East line 59 Rods + 3 links a Stone 12+6	a B. Ash	12 S. 41° W	75
Es NW 1/4 Rods: a Stone 18+8:	or 35 Rods S. of N. E. corner		
	Thence Met 17 1/2 Rods: N. S. 35 Rods: on N. E. corner on the Met 35 Rods		
		Book C. p. 320	

Sections 19 + 20 T17 N. 2 West.  
 Chesley Page Estate  
 S. 1/4 Sec. 20 and N. W. 1/4 Sec. 20  
 30 acres N. end of NW 1/4 of  
 Book C. p. 220

Owners names & c. Cor. Witnesses Dr. Bearings Links

Parber and Chesier a survey for.

1/2 Rods. N. of Cen.	Sycamore	14	S. 66° E	63 1/2 L.
S. of S. E. 1/4 Stone 12x15x20	Beech	14	S 8 E	127 1/2 "
1/2 Rods. N. of S. E. Cor.	S. Ash	15	S 1 1/2 E	148 L.
Sec. Stone 12x15x18	Elm	6	S. 37° W.	83 "

- Huffman Partition
- Stone 6x10x14  
 B. Walnut 8 S 23 1/2 W, 38 1/4 feet
  - Stone 8x12x18  
 Apple Trees 12 N 83 E 28 1/2 feet.

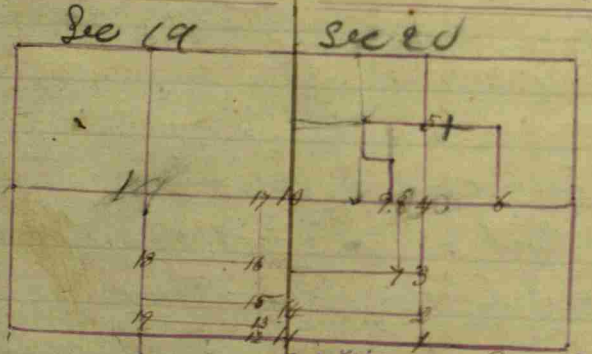


Sections 19 & 20 T. 77 North, Range 2 West.



Owner's Name & A.C.	Co. Witness	Dist.	Bearing	Links
1 on Ash	12	N. 83° W	85	
" on Elm	24	S. 19° W	22	
2 a Beech	13	N. 26° W	28 1/2	
3 a Beech	15	N. 64° W	15	
" a Do.	10	S. 61° E	11	
4 a Sugar	10	S. 10° W	12 1/2	
" a Do.	20	N. 61° E	21 1/2	
Book C. p 245				
11 on Elm	20	N. 4° W	32	
" a B. oak	4	N. 51° W	52	
12 a Beech	14	S. 99° W	82 1/2	
" a W. oak	30	S. 38° E	116	
13 a Stone 10+20	14	a Stone 10+20	15 a Stone 16+30	
16 a Stone 16+20	17	a Beech 10	N. 37° E 27	
	"	a Sugar 16	N. 18° W 33	
a Stone 12+20	15	a Mulberry 8	N. 45° E 244	
a Stone 10+16	19	a Beech 14	N. 52° W 129	
	"	on Ash 14	S. 55° W 61 1/2	
Book C. p 246				

Section 19 Section 20 T. 77 N. R. 2 W.



Owner's Name & A.C.	Co. Witness	Dist.	Bearing	Links
1 a Elm 7	18	N. 26° E	119	
" a Do.	50	N. 73° W	106	
2 a Hickory	16	N. 20° W	23 1/2	
Mulberry 10	10	S. 20° E	10	
" a Mulberry 6	6	N. 37° E	70	
3 on Ash	18	N. 14 3/4° W	37	
" a W. oak	30	N. 41° E	36 1/2	
4 a B. oak	40	N. 22° W	59	
" a W. oak	40	N. 87° E	117	
5 a Poplar	30	N. 71° E	135	
" a Sycamore 2	2	S. 71° W	27	
6 a W. oak	40	N. 44 1/2° W	30 3/4	
" a Beech	14	N. 75° E	21 3/4	
7 on Ash	14	N. 51° W	53	
" a B. Walnut	16	N. 16 1/2° E	52	
8 a Maple	16	N. 1° W	64	
9 a W. oak	36	N. 84 1/2° E	56 1/2	
" a Do oak	14	N. 75 1/2° W	30	
10 a Mulberry	10	N. 88 1/2° E	125	
" a Do Sycamore 10	10	N. 84 1/2° W	76 1/4	

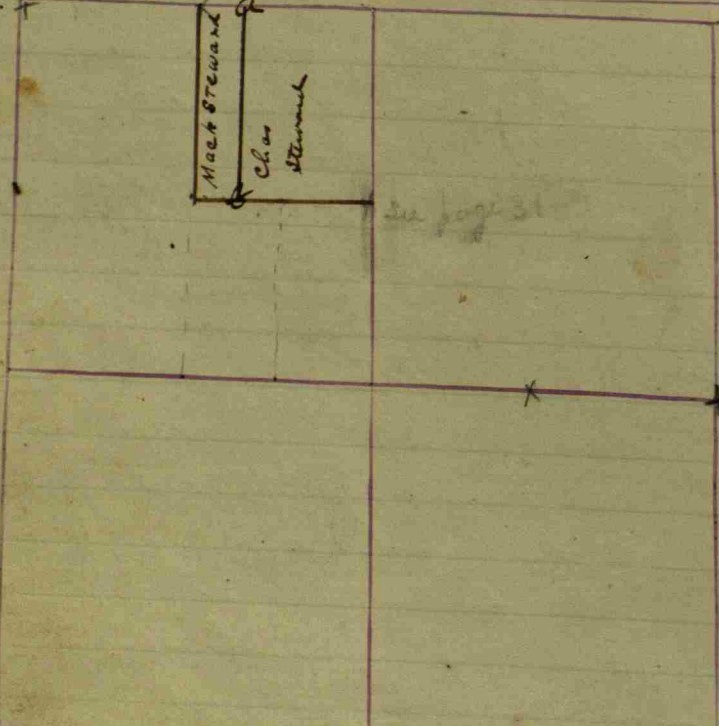
to corner on left hand





Sec 30 19 +

Section 20, T17 North, Range 2 West. Owners names &c. Cor. Witnesses Dr. Bearings Links



Owners names &c.	Cor.	Witnesses	Dr.	Bearings	Links
center S. & E. 1/4	an Elm	30		S 40 1/2 E	18

Steward Partition  
 An n. n. w. 1/4 stone found cut out on record in this book  
 1/2 mile stone found.  
 Center of St. W gr. Stone found.  
 a - Iron Rod 10 Rods East of center of St. W gr.  
 b. Iron " 1" dia 10" long 10 Rods East of center of St. W gr.  
 W. F. Franklin - Surveyor  
 Chas. Martin & James Henderson Comrs.

Survey for Mahan, Hubble et al Nov 15-1904  
 10 days notice being served on all parties interested  
 all parties present except Ernest Hubble.  
 Along S. & E. Chas. Stephenson Sworn Chain  
 Cur. S. S. W. gr. Stone 12x12x12  
 Stone S 3 1/2 W 20 1/2  
 Cur. W of center Stone 12x15x30  
 Stone

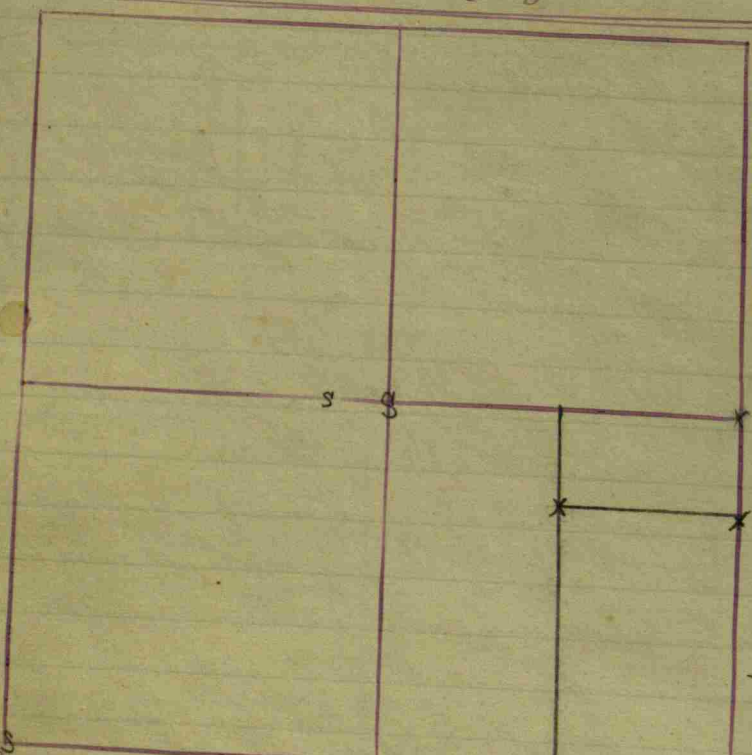
The line for the center of the Road was run from  
 the north to the south section line and stakes set.  
 W. F. Franklin S. & E.

Owners names &c.	Cor.	Witnesses	Dr.	Bearings	Links
Epimile Post	at	Stone 10			
Book C. p 30					
Peter Paige Estate		Position of. It being the 1/4 of the			
N. W. 1/4 of the Sec. 20		1/4 of said 1/4 was set off & assigned			
unto Mary Ann Paige		to her and her heirs & assigns in severalty			
from N. W. Corner 1840		an Ash	12	N. 83° W.	25
(Hedley corner)		an Elm	24	S. 19 1/2° W.	22
The N. W. of said 1/4		was set off & assigned unto			
Rebe C. Prigent minor heir		a Beech	13	N. 26° W.	28 1/2
N. E. corner		a Rock			
and Sec. N. W. corner					
Book C. p 146					





Section 21 T7 North, Range 2 West.



Owners names &c. Witnesses &c. Bearings links

The NW 1/4 of the S. 1/4  
 Measured on North of S. 1/4  
 the excepted 20 acres  
 N. E. Cor. of 1/4 of S. 1/4  
 at Stone 12+15 marked + thus  
 Thence West at 3/4 way to  
 S. of the 1/2 mile Post. Stone 15+18  
 Center of S. 1/4 (set by the  
 S. W. Tindler Affirmed  
 Stone 20+12  
 Stone marked + thus

Except 20 acres on the North  
 over 10 links. The S. E. corner of  
 39 Rods 2 3/4 links South of the  
 a Buck 16 S. 57° W. 37  
 a Sugar 11 N. 37 1/2° W. 20  
 Section line 39 Rods 2 3/4 links  
 + a Walnut 12 N. 28 1/2° W. 18 1/2  
 measurement of Rowland Clark  
 as Road winners on said line)  
 a Sugar 19 N. 86° W. 110  
 a Poplar 40 N. 46 1/2° W. 14 1/2  
 Book C. p. 283

our SSE 1/4 3 1/2 ft too far S  
 The SW & SE sec corners, good stones  
 3 1/2 mi a stone, stump of one wit plain  
 Book C. p. 385

Owners names &c. Witnesses &c. Bearings links

Part of the E 1/2 of the S. 1/4  
 Thence East 140 Rods  
 Center of the creek  
 of the same to the  
 North to the Beginning  
 Estimated at 31 Acres.  
 Book C. p. 216

Center of the Section 21  
 a Stone 12+18  
 Cor. 5 Rods W. of Cent. of Sect.  
 a Stone 10+15

Commencing at the N. W. corner  
 11 1/2 links, Thence South to the  
 Thence Southwardly with center  
 West line of said East half, Thence  
 a Sugar 16 N. 55° W. 22  
 a R. oak 20 S. 83 1/2° W. 57 1/2  
 a R. oak 20 N. 98 1/2° E. 65  
 a W. oak 22 S. 52 1/2° W. 128  
 Book C. p. 224

Sections 21 & 22 T7 North, Range 2 West.

Owners names &c. Witnesses &c. Bearings links

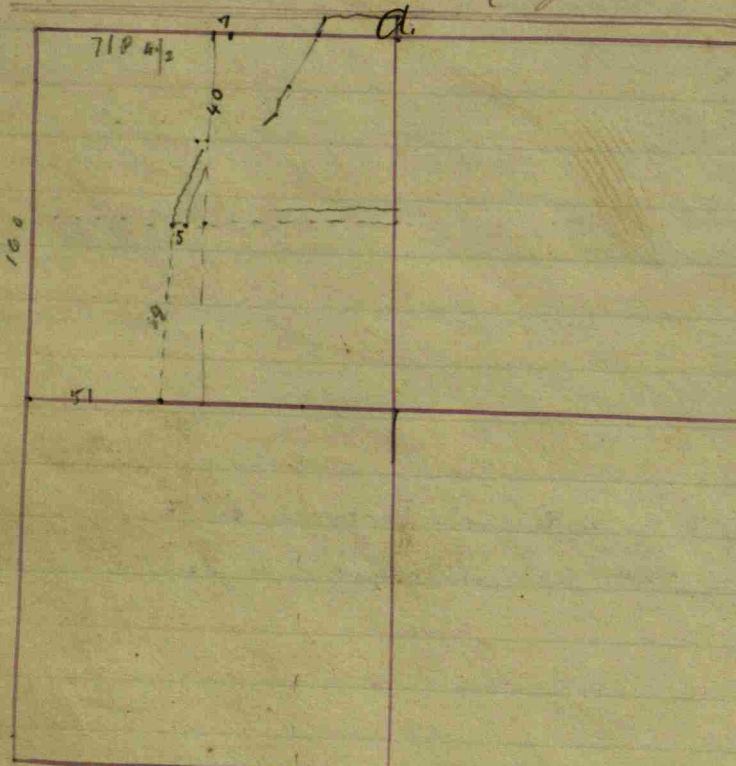
John Adams & Co. Jukes  
 To Willis Gully  
 Thence East 8 1/2 Rods  
 Creek  
 S. 15° E. 20 Rods, Thence  
 S. 8° E. 24 Rods, Thence S. 70° W  
 22 Rods, Thence S. 67° W  
 6 Rods, to the Island.  
 14 1/2 Rods, Thence North  
 being the 14 1/2 Rods North,  
 Thence West 3 Rods to the  
 S. W. corner in New Gate  
 Channel  
 to contain a very small

This Survey made for Beginning 39 1/2 Rods  
 West of 1/2 mile corner between the Sections.  
 to the Creek, a Stone 12+19+8 on W. bank of the  
 a B. Walnut 10 N. 86° W. 10 1/2, Thence  
 S. 140° W. 9 1/2 Rods, Thence S. 54° E. 20 Rods, Thence  
 15 Rods, Thence S. 25° E. 30 Rods, Thence S. 21° W  
 30 Rods, Thence S. 85° W. 20 Rods, Thence S. 20° W  
 Thence West 33 Rods, Thence North for Jukes  
 10 1/2 Rods to the Beginning, Jukes Island  
 Thence N. 80° E. 26 Rods, Thence S. 23° E. 21 Rods  
 West line 33 Rods,  
 a Sugar 18 S. 24° W. 112  
 a Buckeye 12 N. 6 1/2° E. 79 Estimated  
 fraction over 64 Acres. 8 1/2 mi. 17 1/2 1869.  
 Book C. p. 277





Section 22 S. 17 North, Range No. 2 West. Owners names &c. Co. Witnesses. Dr. Bearings links



Owners names &c.	Co.	Witnesses	Dr.	Bearings	links
Eliza Neff & as.		Henry Neff & al. in Sec 22			
Cor. 10 Rods E of Center N. S. 1/4		a R. oak 24	S. 37° W	20	
Eliza Neff & Inact		a B. Walnut 4	S. 47 1/2° E	33 1/2	
Thence N. 70 Rods. or to		Commences at N.E. corner S.E. 1/4			
Thence North 102 Rods.		10 Rods E. of Center. Same 1/4			
Thence East 70 Rods to Section line		a Beech 16	S. 11° E	132	
Thence South 10 3/4 Rods		an Ash 8	N. 51° E	17	
		a Bush 18	S. 69° E	65	
		a Hickory 3	N. 9 1/2° E	48	
		a Sugar 16	S. 83 1/2° E	56	
Estimated at 45 acres.					to the place of Beginning. Book C. p. 207

Witnesses	Dr.	Bearings	links
Cor. 3 1/2 Rods S. of Sec. Center		a B. Walnut 24	N. 28 1/2° E 61 1/2
Stone 12 + 16		an Elm 12	South 49
Cor. 3 1/2 Rods S. of Center N. 1/4		an Ash 7	North 11 1/2° 72
Stone 9 + 17			
Corner 29.2 Rods W. of Center		a B. Oak 48	S. 45° W 79
S of N. 1/4. Stone 12 + 16		an Elm 18	S. 80° E 83
Corner 24 Rods W. of N. W		a B. Walnut 6	N. 8° E 55
Corner of S.E. 1/4. Stone 10 + 14		an Elm 8	S. 40° E 56

Book C. p. 183



Sec 22 T 15 N 77 N. Range 2 West.

Owners names &c. Co. Witnesses. Dr. Bearings links  
 Coloured Estate. Division of  
 Being the S.W. 1/4 of the  
 of the 1/4 of the 1/4 of  
 bounds; Beginning at the  
 North with Sub. line 160  
 East 71 Rods 1/2 links to  
 a Stone 18 + 16 marked + cross  
 Section bearing 100 Rods to  
 about 2 feet of the S.W. corner  
 = wardly with East bank  
 E. & W. through said 1/2  
 Creek. a Stone. Thence  
 84 Rods, but it is not so,  
 West 51 Rods to the  
 Stone West of the Creek on Center  
 line 55 Rods + 22 links  
 of the Creek or Eel River  
 The line cutting off  
 links North of the Center  
 on west bluff of the Creek  
 Section line Stone 18 + 16  
 marked + thus  
 5 Rods + 16 links West  
 Thence West to Section  
 on West line of the  
 Section.

Owners names &c.	Co.	Witnesses	Dr.	Bearings	links
Roller N.W. Corner is 23		Rods + 10 1/2 links North of the			
Center W. of N. 1/4.		a Pin oak 30	N. 15° W	122	
a Stone 22 + 10 sharp top		a Sugar 2	N. 11° W	20	
		a Sugar 18	N. 24° W	98	
Being 56. 19 links South of the					Section corner
Roller, by the corrected					Chain, has about 25.50 Acres.
The Widows portion turns					to be about 24.50 acres, more
or less.					Book C. p. 212

Centre E of centre, a Stone flat, 2 1/2 x 1 1/2.  
 a B Walnut 8 A 63 W - 10 L  
 cor. to sec. 22. 23. 26. + 27. Rebounds from one gov. mark. Still standing  
 + a Stone 12 x 18 pointed part. a White oak 30 S. 55° E 56  
 + a bush 22 South 39° West 27.  
 N 1/2 mile Stone A. Concrete Post S 61° W 32.7 ft.

The line from the  
 line 55 Rods + 22 links  
 of the Creek or Eel River  
 The line cutting off  
 links North of the Center  
 on west bluff of the Creek  
 Section line Stone 18 + 16  
 marked + thus  
 5 Rods + 16 links West  
 Thence West to Section  
 on West line of the  
 Section.  
 balloned at the top.



Section 22 & 15 West continued

Witness names &c. Co. Witnesses Dr. Bearings Links  
 Beginning at the center N of center as surveyed  
 by examining East there, as a mile North, the section line there about one Rod South but entirely lost, which of center half a Rod West on the true line North of the 1/2 mile Post 43° var. 25 Rods, a stone 20x18 smooth  
 Thence S. 27° W. with a stone  
 Thence S. 46° W. 40 Rods  
 Thence S. 10° W. 6 Rods  
 12 Rods. Thence N. 53° W.  
 (passing the line a point 40 Rods S. of N. of N. 77° of Sec. the mill house)  
 Thence S. 15° West 27 Rods. Thence S. 5° E. 10 Rods  
 balance at top.

S. E. corner of N 1/2 of Sec 22 on shown from this West, ash tree & B. Walnut 5 S. 2 1/2 E 8  
 Beech 15 N. 25° W. 109  
 from the N 1/2 mile Post of fine that there has been a creek in But I claim the corner to be of where the line West indicates, if settled, may set center North South. North from the line 88 Rods, being about 8 1/2 Rods above. Thence West with  
 W. Oak 24 N. 70° W. 47  
 do do. 30 N. 32 1/2 E 9 1/4  
 true Meridian 20 Rods.  
 Beech 12 S. 18° W 2  
 W. Oak & Hams 24 S. E. part of tree  
 Thence S. 54° W 6 Rods.  
 at Sugar 26. Thence N. 9° W. 8 Rods, Thence West 11 Rods from the N. 2 1/2 Rods from East the Section line 9 Rods W. of center 22, two feet in the S. W. corner of  
 Thence S. 53° W. 4 Rods  
 Rods. Thence S. 5° E. 10 Rods  
 balance at top.

Witness names &c. Co. Witnesses Dr. Bearings Links  
 To South line of the 1/4 beginning. Dead made to contain 36 1/2 acres  
 Book C. p. 286

Sections 22 & 15 again. Beginning center not found set by fence & line Walnut 24 S. 27 1/2 E 14)  
 N. of N. 77° A Thence East 5° var. 37 Rods & 5 links to a stone, old corner  
 Thence N. 52° E. 16 Rods  
 Thence N. 36° E. 14 Rods  
 of the 1/4 72 Rods South bank of the creek, water marks, as well  
 Thence S. 42 1/2 Rods where  
 Thence S. 59° W 6 Rods South of Honey Locust  
 Thence S. 79° W. 8 Rods  
 S. 65 1/2° W 8 Rods, Thence S. 77° W. 8 Rods.  
 Thence S. 43° W. 12 Rods.  
 S. 26° W. 32 Rods, wheel  
 Thence S. 10° W. or E. 15 Stone 14x12+9. Thence S. 77° corner of the mill  
 Thence S. 76° E. 6 Rods  
 Thence N. 26° E. 20 Rods to Section line between Sec. 15 & 22, 5 Rods  
 balance next page

Sections 22 & 15 continued

Witness names &c. Co. Witnesses Dr. Bearings Links  
 Thence N. 26 1/2 E 6 Rods. Thence N. 46° E 22 Rods.  
 where a B. Walnut 18 N. 46° E. 19 1/2  
 Thence N. 20° E 6 Rods to Beginning Stone.  
 The line on East of the Section line is 36 Rods + 21 links, and the E. boundary line between Graves South corner on Graves' line of the mill race on the portion E of the mill race of the mill, is 2 1/2 Rods East of the running West 11 Rods  
 Book C. p. 306

Top of mi 22, a stone 30x24 - old witness stone standing.  
 N. E. cor of Section 22, a stone 12x16  
 a witness N 43° W  
 113 Rods  
 113 Rods

June 14 1904  
 Century Section relocated all parties interested being present & given to said survey. viz.  
 John Durham, Mark Ross & Daniel Robbins.

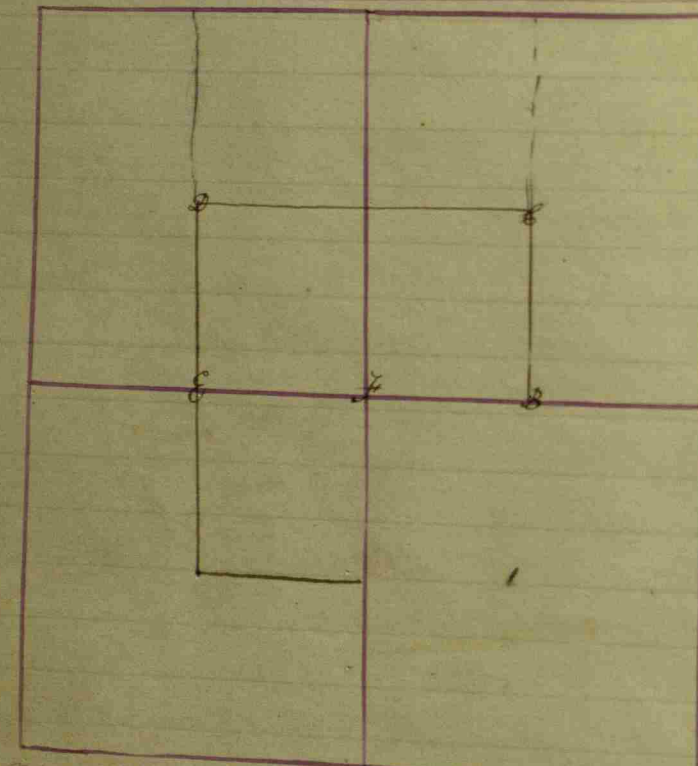
Stone 17x12x9  
 Stone South 25 Links  
 West 25 "  
 W. P. Franklin Sur.  
 Elbert Sander & E J Zaabany  
 Chamber

Clair Ross & Jos Ashby Nov. 19-1902.  
 Beg. at Cent. N. Cent. at a stone Thence N. 21 93 1/2 to St. 12x14x18 By St. N. 25 L.  
 Do 6x9x20 N 25 L.  
 Thence N. 62 1/2 - St. 8x15x24  
 By Sec. 24 385 3/4 N 45 L.  
 Do St. 9x12x18 E 25 L.  
 Thence S 27 N 5 ch. St. 12x12x18 By Sec. 32 N 2 1/2 E 42 L.  
 " S 46 N 10 ch. 10x14x20 Thence 10 N 3 87 N. 54 3/4 L.  
 " S 10 N 150 ch. to stake  
 " S 54 N 150-14x16x26 } Do 8x12x18 N 54 E 33 1/2 L.  
 " N 79 N 3 ch. to stake.  
 " N 53 N 2 ch. " " Forge Stone N 43 1/4 E 13 L.  
 " West 1 ch. 10x15 N 7 Stone 7x8x16 S 13 N 35 L.  
 " S 53 N 1 ch. to stake.  
 " S 13 N 6.75 ch. to stake. Thence S 5 N. 2.62 1/2 ch. to dia. Stone promised this is on line dividing gr. Thence E 18 1/7 ch. to point within 6.66 1/2 ch of place of beg. Thence N. 250 ch. to Stone 14x14x26 By St. 3x11x13 S 24 L.  
 also by St. (small) West 25 L. Thence N. 18 36 ch. to Stone (15 3/4 E. of Cor.) By St. 3x11x13 N. 10 1/2 N 31 L. also by Stone 4x8x12 S 26 1/2 N 27 L.  
 W. F. Sur. N. A. E. Surman Dep.





Section 23 T7 North, Range 2 West.



Owner's name &c.	Cor. Witness	Dr.	Bearings	links
William Trotter	Sec 23	N. E. 1/4 of the S. 1/4		
Section Center		a Beech	16 East	18
		a Spruce	5 N. 42° W	6 1/2
		a Beech	..... N. 35° W	2 1/2
		a Do.	..... N. 73° E	2 2
			Book B. p	223
Wakefield Trotter	Sec 23	a Beech	..... N. 35° W	2 1/2
Center S of N. 1/4		a Do.	... N. 73° E	2 2
		a Sugar	16 S. 29° W	13 1/2
(omit this one)		a Beech	8 S. 31° E	12
			Book B. p	223
Center N. E. 1/4		a Elm	10 N 74 W	30
		a Beech	10 S 33 E	3 1/4

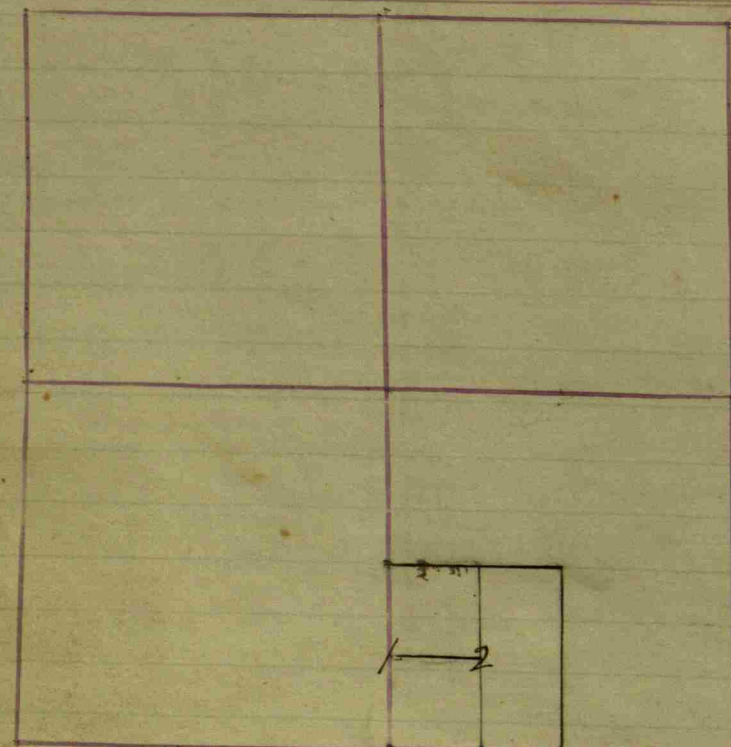
cen. N. W. 1/4 N. E. 1/4 a stone across west fork 10 N. 65° E. 58 1/2

Owner's name &c.	Cor. Witness	Dr.	Bearings	links
Noah Libon	Sec 23	S. 1/4 of N. E. 1/4 also E. 1/4 of N. 1/4		
B	a Elm	30	East	2 1/2
"	a Spruce	11	S. 16° W	9
C	a Beech	11	S. 31° E	11
"	a Do.	10	S. 31° W	8 1/2
D	a Beech	26	N. 41° E	14
"	a Do.	12	S. 15° W	2 2
E	a Beech	12	N. 64° W	16
"	a Do.	18	S. 36° E	20
	Elm N 32 W 45			
			Book B. p	223

a stone 24x12



Section 24 T1 North Range West.



Owners names &c.	Cor.	Witnesses	Bearings	Links
N.E. corner of the section	Stone 16 + 8.	See 24		
N 1/2 mile Post located from old Homestead				
a Stone 2018	a Hickory 16	S. 84. E		43
	with oak 28	N. 54. W		75 1/2
E 1/2 mile post at Stone 12 + 8.	S. East corner			
of Section a Stone 12 + 14.	Center E. of S. E 1/4 a Stone			
20 + 8 flat	with Ash 16	N. 62. E		23
	a Walnut 2 1/2	S. 22. E		13
Center of the section	a Spruce 12	N. 75 1/2. E		6 1/2
a Stone 10 + 12	a Red Oak 2 1/2	N. 58 1/2. W		10 0
Center S. of S. E 1/4	a Beech 16	N. 46 1/2. E		14 2
a Stone 12 + 6	a Hickory 12	S. 19. W		20
Center N. of S. E 1/4	an Elm 27	S. 65 1/2. E		81 1/2
a Stone 10 + 12	a Red Oak 6	N. 27 1/2. W		26
Center of S. E 1/4	a Beech 12	S. 37 1/2. E		12
a Stone 20 + 6 flat.	a Buckeye 9	S. 62 1/2. W		27 1/2
Center E. of S. W 1/4	an Elm 14	S. 49. E		50
a Stone 9 + 14	a Sugar 3	S. 87. E		38 1/2
Center N. of S. W 1/4	a Beech 16	N. 30. E		30
a Stone 8 + 16	a Hickory 6	S. 63 1/2. E		51
Center of S. W 1/4 a Stone	25 + 18 + 4			
	Back C. p.			72

Owners names &c. Cor. Witnesses B. Bearings Links  
 Cen. N. of SW 1/4 of SE 1/4 Stone 6 x 102. Oak Poplar S. 22 1/2. W. 35 1/2  
 Cen. S. SW 1/4 S. E 1/4 Stone from ... Beech 16. N. 18. W. 20 L.  
 1/2 mile stone set by measurement and satisfactory  
 Ballparties - a stone 12 x 10 (rough)  
 with 13 Walnut 10" 90° E 30 L.  
 + Water Oak 6" N 85 1/2 W 16 L.  
 Cen. N. NW 1/4 a stone 6 x 8 1/2 w. Oak 14 N 29 1/2 E 52,  
 + a Hickory 16 S 57 1/2 E 60

cen. S. SW 1/4, a Hickory 6" N 16° E, 25 L. + 13. Walnut 10" S 87° E. 27 1/2  
 4 ft + 10 1/2 S. of cen. SW 1/4 - with a B. Walnut N 1/2 E. 57 L.  
 a cor. 8 1/2 S. south of the above corner.  
 a cor. 7 ft + 7 1/2 E. of cen. of SW 1/4 - with a B. Walnut S. 23° E. 76 L.  
 a cor. 12 ft + 25 L. W. of S. E 1/4 mile - with a Red Oak 12" N. 36° E. 38 1/2 L.  
 and a Hickory 10" N. 59° E. 9 Links  
 a cor. 6 ft. + 21 L. North of the above - an oak 6" S 16 1/2 W. 38 L. and  
 an Elm 5" S. 31 1/2 E. 23 L.  
 a cor. 7 ft + 6 1/2 L. North of above cor. a Burr Oak (for bed) S 24° E. 17 Links  
 a cor. 6 ft. + 21 L. North of S. W. cor of Sec. a Hickory 22" S 78 1/2 E. 9 1/2 L.

John Cory and Ray Tucker a survey for.  
 Jas. Hedge and J. W. Trotter claimmen.

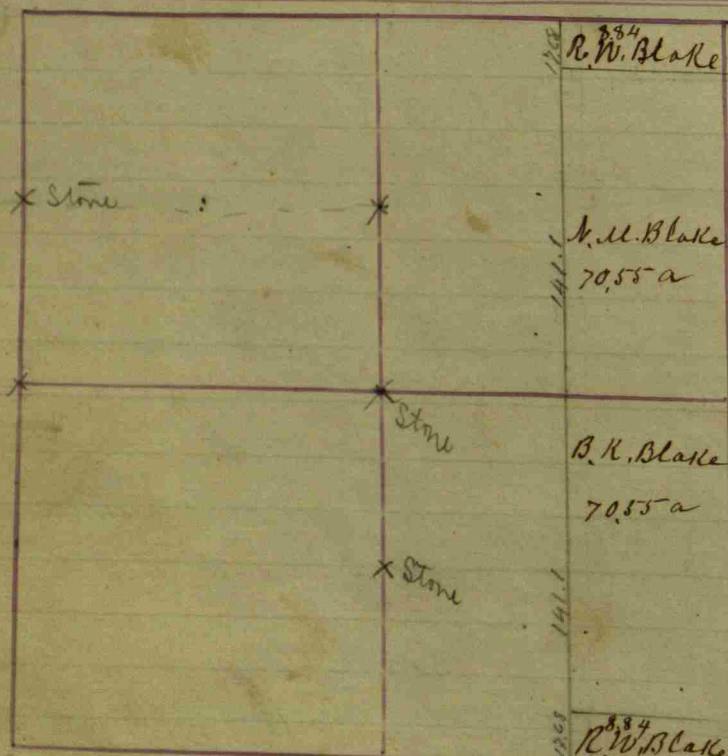
1. Stone 9 x 10 x 20 - B. Walnut 15 S. 43° E. 5 feet  
 Sugar and 26 N. 28° E. 38 1/2 feet.
2. Stone 6 x 15 x 18 - Beech 18 S. 37° W. 21 1/3 feet.  
 Oak 8 N. 14° E. 70 1/2 feet.

J. W. Trotter Surveyor





Section 25 T7 North Range West.



owners names, s.c. witnesses, B. Bearings, Dist.

Sec. 25 & 26. Stone in a Road for El River  
 Township, Beginning at Center of N.E. 1/4 of Sec. 26. 5172.7  
 by Gregg one old stump  
 Witness Stone 18+14  
 Center East of N.E. 1/4  
 Corner to 1/2 mile Post  
 weak, but satisfactory  
 a Stone 19+14+8  
 Thence E. 64 Rods, 15th to  
 the line as shown, &

a Beech 15 S. 25° E 33  
 B. Walnut 12 S. 74° W. 125 1/2  
 by measurement from Section  
 one old stump of tree former  
 South 24 links to where  
 a Hickory 20 N. 48 1/2° E 74  
 a Stone 24+18+12 Corner  
 a Oak 24 N. 30° W 102  
 Book C. P. 289

owners names, s.c. witnesses, B. Bearings, Dist.

E 1/2 mi  
 N.E. cor of Sec. Stone 12x16  
 a Swamp oak 8 N 86 W 18.

Cont'n E. N.W. 1/4 an elm 5 N 61 1/2 E 4 1/2  
 cen. NW 1/4 stone 12x12  
 a sycamore 6 N. 2° E 34 1/2  
 a cor. 40+15 ch. S. of NW cor. of Sec. an elm 10 S. 2° W. 65  
 a cor. 16 ch. + 18 ch. S. of the above an elm 20 S. 7 1/2° W 23  
 a cor. 12 ch. + 95 ch. S. of above a stone 5x6x12 Red oak 6 S. 35° E 68 1/2  
 a cor. 7 ch. + 74 ch. N. of cen. of NW 1/4 a sycamore 6 S. 60° W 37 1/2  
 a cor. 40+15 ch. South of cen. N. of NW 1/4 B. Walnut 14 S. 41° W. 89 1/2 links

E. 1/2 mile cor. well marked found cen. of  
 Sec. by measurement  
 Commencing at center of Sec. thence W.  
 134.6 Rods. A Stone 8x9x18 Witness A  
 Beech 30 in S. 84 1/2 W. 6.87 ch.  
 a Hickory 7" S. 7 1/2 W. 89 1/2 L.

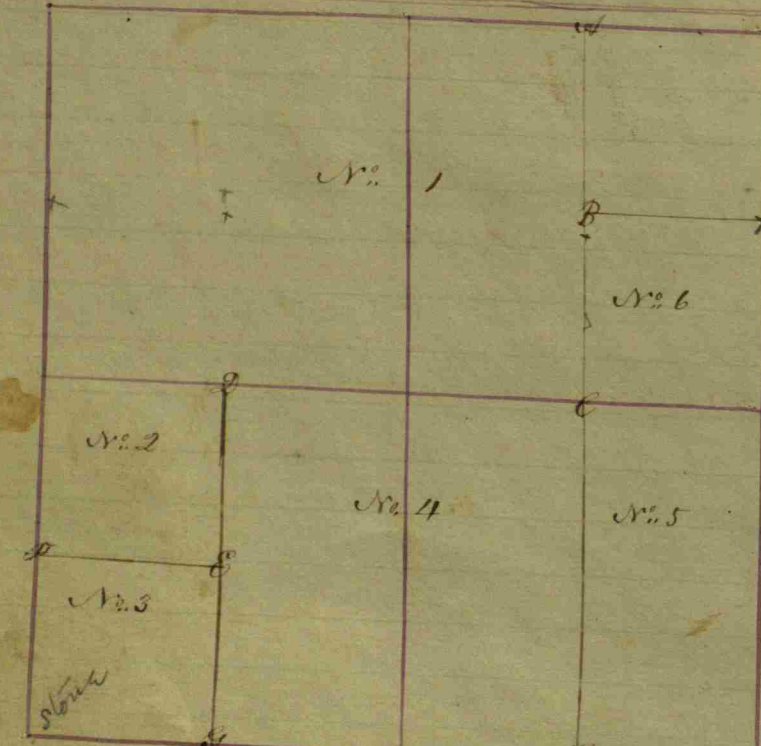
N. with Sec. Bear. 80 Rods. to S. line of NW 1/4 NW 1/4  
 Sec. 25 T. 17 N. 2 W. A stone 8x10x12 witness a B.  
 Walnut 10 S 1° W. E. line of Lower of E. & H. Wall  
 Ireland Richmond qualified  
 Chain carriers

John T. Hooker et al, a survey for.  
 Cen. of Section found by measurement  
 Stone large and nearly round  
 Hickory 10 N. 1 E. 47 L.  
 Stone 8.5 E. 12 L.  
 Cen. N. S. E. 1/4 Stone 6x10x14  
 B. Walnut 12 N 43 E 177 L.  
 Beech 15 N. 2 E. 175 L.  
 Cen. S. of Cen. Stone 6x8x12  
 Elm 24 N. 53 1/2 W. 128 1/2 L.  
 Ash 5 S. 57 E 57 L.

J. W. Trotter Surveyor.



Section 26 N7 North Range West.



Owner's name	Co.	Witnesses	Dr.	Bearings	links
No. 4 Joseph Cline	G	isa Hickory	18	S. 2° E	9
"	sa	Beech	13	N. 53° E	18
"	sa	Beech	10	West	7
"	a	Do.	18	S. 87° E	25
No. 6 Bennett Cline	B	sa Beech	14	North	10
"	a	Do.	14	S. 20° W	25
Book B. p 226					
Corner on west side of Section 26					
a	Stone	8+12	7 1/2	of N. 7/4 at the middle.	
a	Spruce	20	N. 77° E	198	
a	oak	18	S. 47° E	238	
a	Beech	16	N. 66° E	21	
a	Hickory	18	N. 51° W	8	
East side of Stone 5+16 Square					
A Division of E of N. 7/4					
them East + West 75 Rods					
a Stone from which					
a	Beech	17	S. 5° E.	10 1/4	
a	Sugar	15	N. 81° W.	14 1/2	
a	W. Elm	5	S. 49° E	16 1/4	
a	Beech	14	N. 24° E	59 1/2	
Book C. p 135					

Owner's name	Co.	Witnesses	Dr.	Bearings	links
No. 1 Wakefield Trotter	A	a Sugar	8	N. 57° W	19
"	sa	Beech	11	S. 72° E	38
"	sa	Beech	10	N. 61° E	15
"	sa	oak	12	S. 37° W	31
Center of Section					
No. 2 Jacob Sinsmore	D	a Beech	17	N. 2° E	25
"	a	Do.	15	S. 48° W	25
E	a	Beech	16	S. 52° W	9
"	a	Do.	12	N. 38° E	14
F	sa	Beech	22	S. 79° E	23
"	sa	Sugar	7	N. 45° W	18
Book B. p 226					
Balance at Top					

Owner's name Co. Witnesses Dr. Bearings links

Spears Partihin	Del	o	19	o	
Center S. 38° E					
10 inch gas pipe	10 inches long				
Beech	24	S. 18° W	58 3/4		
Stone	24	S. 16° E	28 3/4		
5 1/2 mile post					
gas pipe	10 inches long				
Ash	24	S. 4° W	82		
Stone	24	S. 62 1/2° E	21 3/4		
Center S. 38° E					
Stone 16x8x10	Stone under prop of post to wire				
Stone					
Center Center					
Human tooth 1 inch	Stone				
Center E. Center	Relocated from old witnesses.				
Stone 12x10x8	Oak	24	S. 37° W	31	
	Beech	18	S. 61° E	15	
Center set found by running and measuring.					
Stone 10x10x8	Hickory	8	S. 71° E	7 1/2	
	Ash	10	S. 69 1/2° E	7 1/2	
H. P. Franklin S. N. Co.					

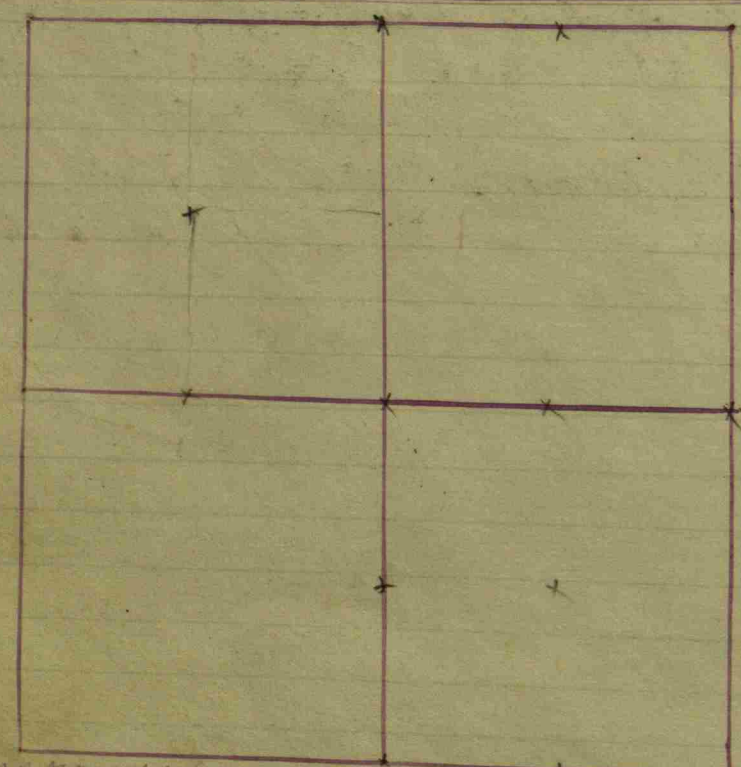








Section 28 T17 North Range 2 West.



Owner's names & cor.	Witnesses	Bearings	Links
1/2 mile Post Relocated	a R. Elm	20 N. 52 1/2° E	62
a Stone 14+8	a Sugar	14 S. 30° W	69
Center of Section	a Beech	24 S. 42 1/2° E	26
a Round Stone 26	a Do.	10 N. 54° W	17
East 1/2 mile Post Relocated	a G. Ash	18 N. 23° E	35
a Stone 34+24	a Beech	14 S. 71 1/2° E	35
Center N. of S. E 1/4	a B. Oak	24 N. 24 1/2° E	121
a Stone 14+8	a H. Elm	8 N. 62 1/2° E	9 1/2
Center S. of S. E 1/4	a Poplar	30 N. 68° W	28 1/2
a Stone 15+9 flat	a Beech	11 S. 20 1/2° W	31
Center of S. E 1/4	a Stone	20+15	
Center N. of S. E 1/4	a Sugar	14 S. 70° W	26
a Stone 14+3 flat	a Do.	30 N. 40° W	35
A corner for Thomas H	Marks on the West side of		
Sec. 28, T. 17, R. 2 West,	83 Poles North of 1/2 mile Post.		
a Stone 18+8	a Beech	22 N. 27 1/2° E	29
Center S. of N. W 1/4	a Sugar	24 S. 35° E	59
a Stone 12 in	a Elm	48 S. 65° W	13
A corner 30 Rods N. of the	a G. Ash	14 N. 57 1/2° E	31
about one a Stone 8 in Round	a Sugar	14 N. 5° E	5 1/2
	a W. Oak	40 N. 58° E	115
		Book C. p. 79	
Corner 120 Rods + 12 Rods	South of Center N. of N. E 1/4		
a Stone 24+16	a B. Oak	24 N. 14° W	63
112 in South of N. 1/2 mile	a Hickory	18 N. 42 1/2° W	67
Book C. p. 84	a Sugar	14 S. 74° E	71
	a B. Walnut	4 N. 29° E	106

Owner's names & cor.	Witnesses	Bearings	Links
Joseph (line The	1/2 of the N. E 1/4		
Division line between	a Hickory	9 S. 40 1/2° W	27
Gibson & (line	a Buckeye	9 N. 20° E	22
(Implicit this one)	a Beech	16 N. 37° E	16
	a Sugar	28 N. 56° W	28
		Book B. p. 228	
Section 28, N. E 1/4	a Pin Oak	18 N. 65° W	34 3/4
Center N. a Stone 28+16	a Saw Oak	21 S. 35 1/2° E	126
		Book C. p. 84	

Owner's names & cor.	Witnesses	Bearings	Links
Silas Russell a	Survey for in Sec. 28, 29, 32		
Beginning 32 1/2 Rods N	of Center E. of Center of Sec. 29.		
Thence East 134 Rods	to Center of Oak. Thence S. 32° W		
18 Rods. Thence S. 45° E 14 R.	to Thence S. 10° W 7 Rods.		
Thence S. 80° W 12 Rods.	Thence W. 2 1/2 Rods Thence South 50 Rods.		
This point taking South	is 40 Rods East of 1/2 mile Post.		
Thence S. 45° W 24 Rods	Thence South 16 Rods. Thence S. 19°		
14 Rods. Thence North	74° West 74 Rods. Thence S. 8 1/2° W 34		
Rods. Thence S. 8° W 14 Rods.	Thence S. 63° W 14 Rods. Thence		
S. 27° W 32 Rods. Thence	S. 40° 18 Rods to a line of Sec.		
13 R 17 1/2 E. of the 14	corner. Thence S. 40° 18 Rods.		
Thence S. 7° E 16 Rods.	Thence S. 42° W 22 Rods. Thence		
S. 2° E 16 Rods. Thence	S. 42 1/2° W 20 Rods. Thence N.		
40° E 10 Rods. Thence	N. 55° E 19 Rods + 3 links. Thence		
N. 8° E 28 Rods. Thence	North on line 15 3/4 Rods to the		
1/2 mile Post. containing	by Estimation about 11 2/3 Rods.		
	Book C. p. 298		

Hedge et al. a Sur. for Jan. 21-1901  
 Center N. W 1/4 17+5 X 6  
 Book 50 N. 9 1/4 E 50 L.  
 Elm 10 N. 34 E 23 L.  
 Cent. N. of Cent. 17 X 2 X 6  
 Walnut 10 N. 74 W 48 L.  
 W. Franklin Co Sur.



Section 29 57 North Range West. Owners names &c. Witnesses Dr. Bearings Links

Owners names &c.	Witnesses	Dr.	Bearings	Links
South 1/2 mile Post Relocated	a Beech	20	S. 6° W.	59
a Stone 13+12	a B. Walnut	6	N. 26° W	6 1/2
West 1/2 mile Post Relocated	a B. Oak	110	N. 14 1/2° W	29 1/2
a Stone 15+12	a Hickory	...	S. 11 1/4° E	6 1/4
Center of the Section	a Beech	15	N. 16° W	8 1/4
	a W. Elm	30	S. 30° E	8 6
Center on S. of N.W. 1/4	a Beech	15	N. 11 1/2° W	35
S. 3 poles 1 link S of	a Do.	18	S. 60° E	9
the N.W. (S. of the)	a Beech	15	N. 64° W	15
Section	a Do.	10	S. 67 1/2° E	11
Thence East across the	a Sugar	12	S. 10° W.	12 1/2
top of N.W. 1/4	a Do.	20	N. 65° E	21 1/2
			Book C. P. 29	

Section 29

Owners names &c.	Witnesses	Dr.	Bearings	Links
Smith Rustel at	Survey for.		North of the Center	
on the South of the N.W. 1/4	a Sugar	18	S. 32° E	13
S. 3 Poles	a Beech	10	N. 53 1/2° W	20
Thence West across the 80	a W. Oak	28	N. North	7
	a Poplar	34	S. 60° W	12 1/4
Center S. of S.E. 1/4	a Beech	12	S. 65° W	6
a good Stone 16+10	a Do.	19	S. 51° E	25
N.E. Corner of Sect. Relocated	a Hickory	24	S. 5 1/2° W	58
a Stone 13+10	a R. Oak	18	N. 34° E	39
Center N. of N.E. 1/4	a Sugar	18	N. 11° W	41

Balance Walnut page

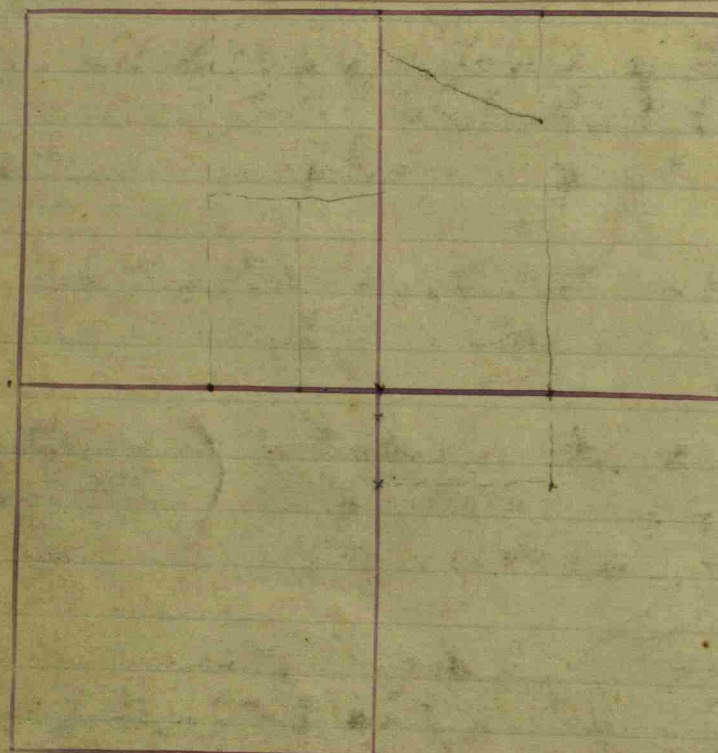
Owners names &c.	Witnesses	Dr.	Bearings	Links
East 1/2 mile Post Relocated	a B. Walnut	30	N. 10° E	96
a Stone 13+12				
Center East of Center	a Beech	18	S. 84 1/2° W	28
a Stone 13+11	a Do.	24	S. 10° E	30
Center West of N.E. 1/4	a Poplar	36	S. 3 1/2° E	8 1/4
	a Do.	30	S. 32° W	55
S.E. Corner of 13 1/2 acres	a Sugar	16	S. 10° W	54 1/2
a small Stone 8+10	a Do.	20	S. 78° E	8 1/4
N.E. Corner of 13 1/2 acres	a W. Oak	40	N. 42° E	115
a Stone 24+18	a Beech	10	S. 56° W	20
			Book C. P. 29	

Grave yard. Beginning N 32° W from a true meridian  
 variation (4 1/2) 92 Rods from - center S. S. E. 1/4 (29)  
 to the North Side of a ~~Walnut~~ oak, 20 rods + thence  
 North 14 Links = to a Stone 10x12 - on the Edge of Bluff,  
 thence N 75° E. 14 L. thence S 27° E. 5 Rods.  
 " West 8 Rods. thence North 64 Links; thence  
 North 71 1/4 E. to the Beginning Stone: 163 Links.

27.46 Rods South of Centre on the West of the North East  
 quarter a stone 10x18 -  
 a B Walnut 15 N 9 1/2 W 43 Links  
 27.74 Rods S. of the centre N E 1/4. a stone 10x12  
 a Hickory S 81° W. 57 L  
 Thence Hedge survey for. Trustee Eel River F.  
 3.15 ch. N. of S 1/2 mile stake to a  
 Stone 4x12x16 wit. by stone South 21 Links.  
 Thence North 20 Rods to a  
 Stone 6x12x20 pointed wit by stone S. 50 1/2 W. 26 1/2 L.  
 Thence S. 43 1/2 E. 3.45 ch. in Road to a  
 Stone 6x10x14 wit. by stone S. 58 1/2 E. 24 1/2 L.  
 Thence South 2.76 ch. to the beginning = 1.22 ch.  
 J. W. Trotter  
 S.H.C.



Section 30 N 7 North Range 2 West.



Owner's name & Co.	Witnesses	Dir.	Bearings	Links
Mill Lot, Survey of	in the NE 1/4 of Sec. 30			
Commencing in front of	an Oak stump 40	S. 16° W	62	
Road, Rock promised from	an Oak 25	N. 37° E	68	
Thence N. 37° E 3.50 links				
a Post from which	a Sycamore 48	S. 21° W	5 1/2	
Thence N. 12° W 8 chains	a Sugar 6	S. 8° W	18	
a Post	a Beech 10	N. 59° W	12	
Thence S. 37° W 4.56 in the				
Road, a Post.	an Elm 11	N. 21° E	9 1/4	
Thence S. 6 1/2° E 3.30. Thence	S. 43° E 4.70 to the Beginning.			
Estimated to contain	Three Acres.			

Book C. p. 137

Owner's name & Co.	Witnesses	Dir.	Bearings	Links
Smith Russell Survey	for. Beginning 540 chains			
South of the North half	mile Post, in the line running			
North-South through	the center of the Section -			
Thence South on said line	47 3/4 chains			
where	a Sugar 8	N. 51 1/4° W	13	
	a Beech 10	S. 47° E	68 1/2	
	a Sugar 10	N. 14° W	23	
	an Ash 6	N. 10° E	27	
	a Beech 9	S. 23° W	54	
Thence E. 20 chains				
a Stone 5 + 7				
Thence N. 33.83 chains				
to Rock 12 + 16				
Thence N. 47° W 25 links	a Buckeye 9	S. 3° W	65	
Thence North 15 links	a Beech 14	N. 6 1/2° E	42	
Thence N. 61° W 15.83 chains	a Sycamore 6	S. 68 1/2° W	41	

balance next page

Owner's name & Co.	Witnesses	Dir.	Bearings	Links
The 1/2 mile Post	107 links South of the full corner			
a Stone 12 + 15	a Sugar 22	S. 7° E	20	
	a Beech 18	N. 16 1/2° E	29	
Center West of Center	a Beech 24	N. 5° E	33	
a Stone 28 + 24	a Poplar 26	S. 3 1/4° W	38 1/2	
				Book C. p. 73
Part of the NW 1/4 of Sec. 30	Commencing at the NW corner of			
said 1/2 mile Post	15 links, thence S. 52° E. 3 1/2 Rods			
Thence S. 66° E. 6.3	Rods, thence North 76 Rods			
Thence West to the	Beginning, containing 25 Acres.			

Book C. p. 245

Owner's name & Co.	Witnesses	Dir.	Bearings	Links
Thence N. 46 1/2° W to the				
Beginning, a Rock 6 + 10	a W. Oak 40	N. 52 1/2° E	41	
Center of Section	an Elm 14	S. 29° W	47	
Containing Eighty three	an Ash 10	N. 65° W	43	
Acres, more or less				Book C. p. 147
Commencing 7 1/2 Rods	North of center South of S. E. 1/4			
Thence East 20 Rods, Stone	6 + 8. W. Oak 36	S. 62° E	18	
Thence N. 135 Rods 20 links, Stone	4 + 6. Hickory 16	S. 40 1/2° E	17 1/2	
Thence N. 47° W 53 Rods	+ 22 links to corner of Dennis.			
	a Beech 9	S. 23° W	54	
Thence South 135.8 links	to another corner of Dennis.			
Thence West 20 Rods,	Thence South 36 Rods, Thence			
East 20 Rods to the By	inning, containing 40...			
and a Cor. 5 3/4 Rods North	a B. Oak 36	N. 50° W	75	
of 1/2 mile where	an Elm 30	S. 71° W	110	

Book C. p. 175

Owner's name & Co.	Witnesses	Dir.	Bearings	Links
Section 30				
L & J Russell	Part of S. E. 1/4 of N. E. 1/4 of Sec. 30			
Commencing...	Thence South 68 Rods + 20 links,			
Thence North 38 1/2 East	61 Rods to the center of State Road,			
(where	a W. Oak 31	S. 44° W	68	
a Stone 12 + 16	a B. Walnut 10	S. 80° W	177	
Thence N. 51 1/2° W 45 Rods	+ 15 links to the Beginning,			
Containing 6 1/2 Acres.				

Book C. p. 233

60 Rods North of the centre West of Centre a Stone 12 x 18. a B Walnut 4 S 76 W. 8  
a work 10 N 85 E. 70 1/2

North from the centre of Section 60 Rods a Stone 10 x 12 - a Bur oak 16 N 65 E 83

Centre of Section selected by witness & a Survey by running both ways - a good Stone 20 x 30 inches a small ash stick N 86 E. 27

12 1/2 Rods South of the centre of Section a Stone 12 x 20. Witness a Stone North of the line 12 1/2 Rods - Thence South 38 8/10 Rods - Thence West 43 4/11 Rods. Thence North 38 8/10 Rods

Thence West 43 4/11 Rods to the place of beginning Chisher and Barber a survey for 1 1/2 Rods N. of Center of Sec. 30 a Stone 12 x 15 x 20 Sycamore 14 S. 66 E 63 1/2 L. Beech 14 S 8 E 127 1/2 L. over



64

1/2 Rods W. of St. E. Cor. Sec. 30 T. 17 N. R. 27 W.

Stone 12x15x18

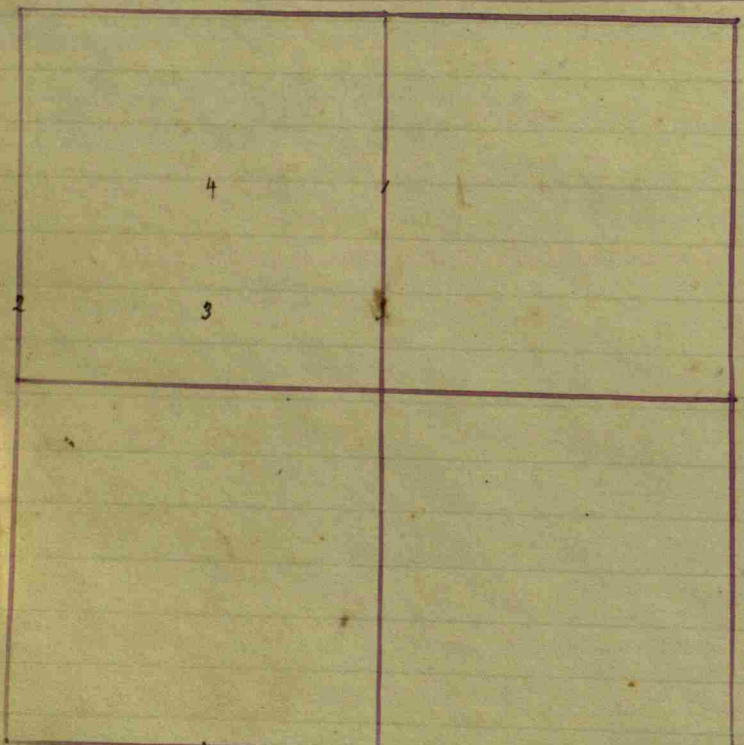
Ash 15 S 1/2 E. 148 L.

Elm 6 S 37 W. 83 L.

65



Section 31 T<sub>7</sub> North, Range 2 West.



Witnesses	In	Bearings	Links
East side of the West 1/2 of the	an Ash	5 S. 89° E	11
S. 1/4. N. 1/4. Corners Post	an Oak	6 N. 54° W	14
The SW corner a Post	a Beech	12 N. 27° W	20
	a Sugar	18 S. 55° W	33
Center on the N. of 1/2 of S. E. 1/4 Post.	a Beech	14 N. 73° E	32
	a Sugar	28 N. 55° W	33
Center on South of same	a Sugar	10 S. 56° E	6
	an Ash	10 N. 68° W	25 1/4
Center of 1/2 of S. E. 1/4 Post	a Beech	11 S. 24° E	21
	an Oak	10 N. 31° E	25
Center on the East of S. E. 1/4	a Beech	18 N. 31° E	37
	a Ditto	20 S. 53° E	37
			Book C. p. 138

Witnesses	In	Bearings	Links
S. E. corner of 31 Acres, at Town 24+18	a Poplar	40 N. 40° W	30 1/2
Pointed, from which center N. of N. E. 1/4 in the	a Beech	20 S. 10° W	7 1/2
Corner of a Poplar stump 40	a Ditto	16 S. 16° E	55
Center of N. E. 1/4	an Oak	40 N. 31° E	7
a Stone 10+11	a Beech	30 N. 70° W	16
Center of S. E. 1/4	a Beech	24 S. 38° W	31 1/2
a Stone 10+9	a Ditto	10 N. 86° E	23 1/2
Center of N. E. 1/4	a Sugar	15 N. 87° E	46
a Stone 8+10	a Beech	9 N. 1° W	19 1/2
			Book C. p. 139

Witnesses	In	Bearings	Links
North 1/2 mile at Stone 12+24	an Elm	20 N. 2° E	38
Center of Section a Stone	an Oak	5 S. 47° E	77
	an Oak	50 S. 64° W	95 3/4
	an Ash	10 S. 35° E	148
N. W. Cor. of Sec. Stone 12+20	an Ash	8 S. 45° E	43
	a Ditto	8 S. 79° E	44
West 1/2 mile by running	a Poplar	12 N. 37° E	28 3/4
a measure of, at Stone 10-18	a Sugar	... S. 8° E	137 1/2
			Book C. p. 215

Witnesses	In	Bearings	Links
South 1/2 mile Re-sited from old witness Stone 12+18	a Sugar	16 S. 55° W	73
	a Ditto	12 S. 27° E	136
			Book C. p. 236

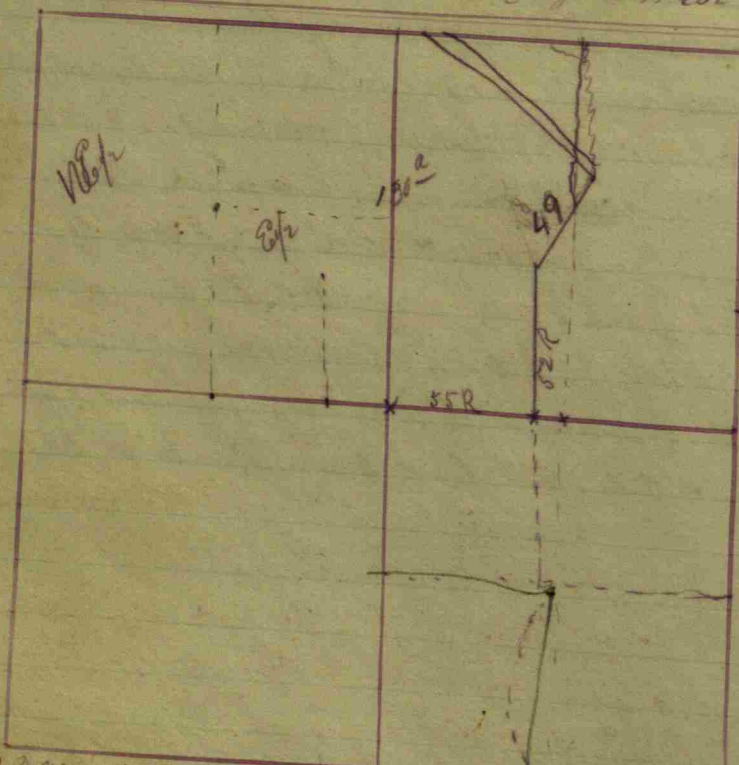
Witnesses, Cor. Witnesses, In, Bearings, Links  
 For Mr. Acres - Beginning at the centre on the South of the South west quarter thence west 30 1/2 Rods a B Walnut 8 N 1/2 E 182 1/2  
 thence North 26 Rods + 6 links a B Walnut 12 S 42 W, 18 1/2  
 thence East 30 1/2 Rods a flat stone 12 x 16 a B Walnut 10 N 83 W 116

For Beckelhamm + Pennington.  
 Beginning 40.97 R. North of S.W. corner of sec. 31 T. 17 N. R. 2 W.  
 A stone 7x15x19 - wit. a smaller stone N. 55° E. 17 1/2 feet.  
 Thence North with sec. line 115.53 R. to 1/2 mile stone.  
 Thence East with Quarter Sec. line 60.34 R. a stone 9x17. no wit. Thence South 115.53 R. A stone 10x17 with a small wild cherry S. 45° W. 17 1/2. Thence west to the place of beginning - estimated to contain 4 3/4  
 90 1/2 R. west of cen of sec. a stone, 10x15x20 wit. Swamp ash 12 1/2 S 63 1/2° E 10 1/2 links  
 82 1/2 R. S. of sec. cen. stone 16x18x20 wit. a stone N 44° W 41 Links  
 90 R. W. + 82 R. S. of sec. cen. stone 10x12x14 wit. stone (flat) N. 4 1/2° E 33 1/2 L. to front  
 A corner 60.34 R. E + 26.24 R. N. of S.W. cor. of sec. 31 wit. a stone, 30 links west.

For Harris + Hicks, in sec. 31 T. 17 N. R. 2 W, July 28th, 1857.  
 S. H. Ballard, James A. Gill + Benji Duncan, sworn as chainmen.  
 1. Cen. of sec. cen. a stone 6x12x16. Wit. an Elm. 24 N. 53 1/2° E. 35 1/2 L. and a sugar, 3 1/2 S 11 1/2° W. 14 3/4 L. (not marked) via. 3° turn off.  
 2. Cen. on W. of S.W. 1/4 of NW 1/4, a sand stone 3x10x12 (wit. needed by a swamp ash 12 1/2 N 73 1/2° W. 14 L. 10 1/2 off.)  
 3. Cent. E. of S.W. 1/4 of NW 1/4, a round and somewhat pointed Boulder. wit. by a stone 25 L. west on line.  
 4. Cen. of NW 1/4, a stone 3x10x16 flat and pointed wit. by a stone E. on the line 30 L.



Section 32 17 North, Range 2 West. Owners names &c.



Owner's name &c.	Cor.	Witnesses	Dr.	Bearings	Links
Center E. of center			a B. Oak	15 S. 17° W.	12 1/2
a Stone 12 + 15			2 a B. Walnut	13 S. 73° E	46
Book C. p. 73					
Survey for					
Beginning at the N.E. corner of the 1/2 of S. 1/4 Sec. 18 in. Corners. Thence					
S. 49° W. 19 poles & 7/16 in. a Sugar 22 in. corner					
thence S. 36° W. 10 Poles to the N. side of the State Road leading					
from Danville to Francisville; thence					
S. 49° E. 18 Poles to fork of Sal River or Creek; thence					
S. 49° W. 19 poles to the line of said Creek 56 Poles to the line					
through the center; thence north					
+ 20 links to the Beginning.					
2 Acres. Cont. lot to State Road.					
Book C. p. 114					

Owner's name &c.	Cor.	Witnesses	Dr.	Bearings	Links
John Richardson					
The S. 1/4 & N.E. corner					
Center of the Section					
a Stone 14 + 10					
Center West of center					
a Stone with 20 + 10 S. & E. Cor.					
Center of N. 1/4 of Section					
a Stone 10 + 9					

Owner's name &c.	Cor.	Witnesses	Dr.	Bearings	Links
Commencing at the					
Section center, and running east					
58 Rods, a Stone 8 +					
a Stone 14 + 18, where					
thence North 52 Rods to					
a Post 16 S. 85° E					
2 a B. Oak 30 S. 10° W					
an Elm 16 S. 7° E					
2 a B. Walnut 14 N. 5° W					
80					
7 Rods + 18 links to N.W. corner					
South to the Beginning.					
Book C. p. 178					

Owner's name &c.	Cor.	Witnesses	Dr.	Bearings	Links
School House					
15 links East of N.W.					
16 links in center of line					
from Ill. State Road, Stone 10 + 14					
1 running N. 44° E. 18 Rods					
2 22 links, a Stone, Thence					
N. 44° W. 8 Rods + 23 1/2 links					
Acad. More or less					
Sec. 32					
Cemetery, a Survey					
80 Rods + 14 links N. + 4 Rods					
said Sec. 32 at Stone 7 + 12					
thence South 7 Rods + 10 links					
a Stone, Thence N. 4 Rods					
+ 19 links to the Beginning					
or less					
Book C. p. 183 + 184					

center on the East of the S.E. 1/4  
 a Red oak 11. S. 56° W. 19  
 thence West 104 Rods to East side of the creek -  
 thence N. 33° E. 5 R. thence N. 56° E. 11 Rods.  
 N. 28° E. 14 R. thence North, 12 Rods; thence  
 N. 48° E. 48 Rods, to the line right & S. Thence  
 the center of the S.E. 1/4 Section; thence North,

Beginning at a Point which is 55 Rods East &  
 52 Rods North, and 49 Rods N. 14° East from  
 the center of the Section in the center of  
 the Crawford's mill road in the creek - which  
 Point is 25 Links North 3° East from a  
 good stone buried in the gravel + thence  
 (Corridor of 4° allowed for) thence South 28° East,  
 8 Rods; thence S. 52° East - with the North side  
 of the Road - 242 Links to the center of the Road at  
 the bend - thence South 79° East in line with a  
 tree, 76 Rods; thence South 67° East 216 Rods to the  
 Section line; thence North with the Section line  
 90.55 to the Section cor. thence North on the  
 East line of Section 29 - to the center of the  
 creek thence North 83° West with the center  
 of said creek - 66 Rods = 14 Rods = thence  
 South 65° West 10 Rods; thence North 64°  
 West 90 Links; thence South 74 West 100 Links;  
 thence South 200 L - thence S 30° W. 107 L  
 thence S 61° West, 16 Rods; thence S 22° W.  
 33 1/2 W. 20 Rods; thence S 33 1/2 W. 22 Rods;  
 thence S 44° W. 12 Rods; thence S 31° W. 12 R.  
 thence S 15° East, 12 R thence S 51° W. 26 R.  
 thence S 3° E. to the place of lying - 13 1/2 Rods.



70  
 Geo. Hedge <sup>and Jesse Davis</sup> survey for.  
 Beginning at N.E. cor. of N. 1/2 N.E. 1/4 32-17-2 N.  
 Thence S. 4 1/2 N. (at pt. of needle) 7 chains to a  
 Stone 4x20x24 Else 18 S. 69 1/2 E (needle) 72 1/2 Links.  
 Stone S 17 1/2 E (") 42 "  
 Thence S. 53 N. (at print of needle) 4.82 ch. to old cor.  
 Stone 4x8x18 with stone S. 44 N. 31 L.  
 Thence S. 38 N. (needle) 2.50 ch. to a  
 Stone 4x8x24 with by stone N. 45 1/2 N. 43 1/2 L.  
 " N. 44 N. 6.14 ch. to Schoolhouse lot.  
 " N. 44 1/2 E. 4.16 "  
 " N. 44 N. 2.22 1/2 "  
 " S. 44 1/2 N. 4.16 ch. to E. line of N.S. & L. road.  
 " N. 44 N. 8.16 " " the sec. line.  
 " East 17.92 1/2 ch. to the beginning.

7 R. 15 L. E. of N. 1/2 mile <sup>is a</sup> stone 6x7x18  
 Black Walnut 18 N. 14 1/2 E. 90 L.  
 Rock S. 40 N. 40 "  
 J. W. Trotter, S. H. C.







Carran, Stevens, Young & Brown a survey for  
5 chains E. of Cen. S. of S. E. 1/4 Sec. 38 is a  
Stone 10 x 12 x 18

S.E. cor. Sec. 33 - Stone 10 x 15 x 16 found by running &  
measuring.

Three West 4 ch. to a Stone 6 x 10 x 12

" West 2.50 ch. to a stake

" West 3.50 ch. to a stone 10 x 14

" West 60 Feet to a stone 8 x 12.

May 14, 1894.

J. H. Trotter S.H. Co.

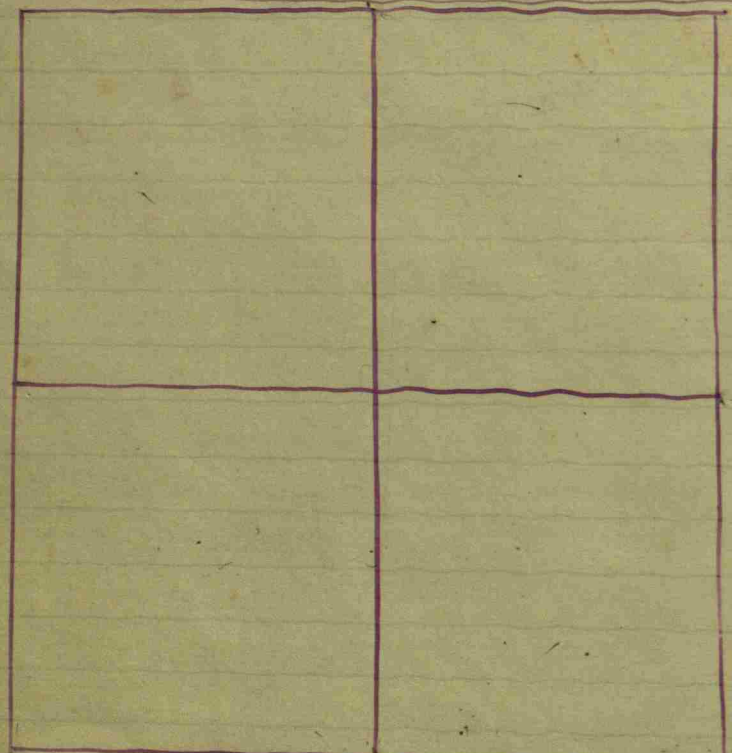
10.00







Section 35 T17 North, Range 2 West. Owners names &c, Cor. Witnesses. Dr. Bearings links

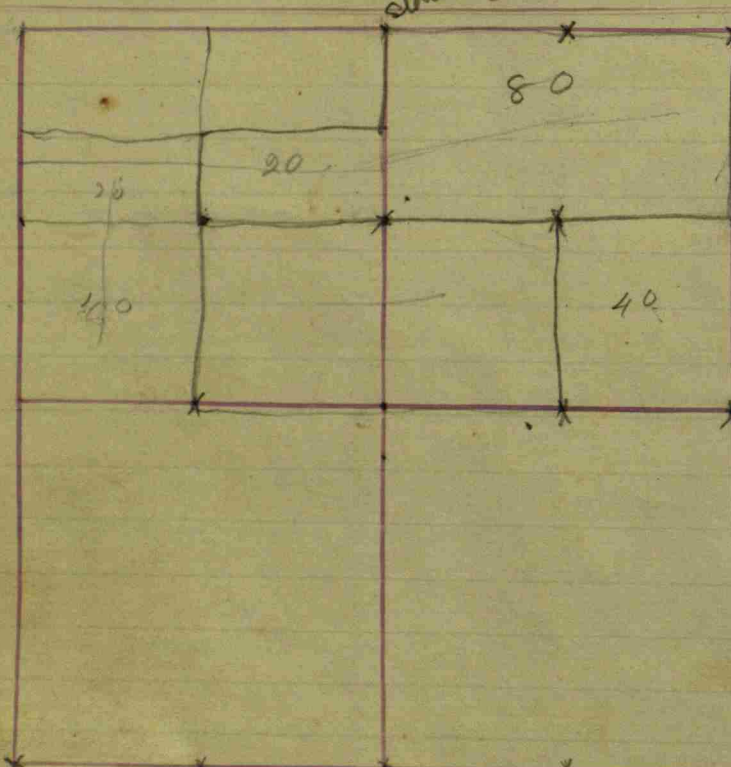


Owners names &c, Cor. Witnesses. Dr. Bearings links

A vertical line drawn down the right side of the page, serving as a margin or separator.



Section 36 T7 North Range 2 West



Survey of the 36 sections of S.W. 1/4 of Sec. 31, T. 17, R. 2 W. and N.W. 1/4 of Sec. 1, T. 16, R. 2 W. of S.E. 1/4 of Sec. 1, T. 16, R. 2 W. in Boone County, Mo. N.W. corner of Sec. 36 relocated from one stump, S.E. corner of the tract on the of a Poplar stump in the Road a R. Oak 12 N. 55° E 32 Hickory 24 N. 53° E 15 Over his advancement is 16 of 1/4 of Sec. 36 as above. a Sugar 12 N. 20° E 23 a Ditto 11 S. 62 1/2° E 113 N.E. corner a B. Oak 10 S. 83° W 5 1/2 Hickory 15 S. 6° W 113

Walter has also 30 feet Hunt and on the north of Hunt for to turn the Road to the Widows & youngest heirs, a B. Oak 24 N. 42° E 24 a Ditto 24 N. 37 1/2° E 54 Hickory 12 N. 48° E 19 a Sugar 13 S. 62 1/2° W 78 Portion: Thence East 145 Poles a Ash 12 S. 70° E 12 balance next page

Table with columns: Owners names &c, Con, Witness, Dr, Bearings, Links. It lists various landmarks and bearings for the section, including 'Center South', 'Center N. of N.E. 1/4', 'Center of N.E. 1/4', 'Center N. of N.E. 1/4', 'C. of N.W. 1/4', 'Center on E. side of N.E. 1/4', and 'March 8th 1863. Snowing fast at Danville Mo.' with a reference to 'Boone Co. p. 236'.

79 3/4  
12 1/2 814 0  
3 3/4

Survey of the 36 sections of S.W. 1/4 of Sec. 31, T. 17, R. 2 W. and N.W. 1/4 of Sec. 1, T. 16, R. 2 W. of S.E. 1/4 of Sec. 1, T. 16, R. 2 W. in Boone County, Mo. N.W. corner of Sec. 36 relocated from one stump, S.E. corner of the tract on the of a Poplar stump in the Road a R. Oak 12 N. 55° E 32 Hickory 24 N. 53° E 15 Over his advancement is 16 of 1/4 of Sec. 36 as above. a Sugar 12 N. 20° E 23 a Ditto 11 S. 62 1/2° E 113 N.E. corner a B. Oak 10 S. 83° W 5 1/2 Hickory 15 S. 6° W 113

Survey of the 36 sections of S.W. 1/4 of Sec. 31, T. 17, R. 2 W. and N.W. 1/4 of Sec. 1, T. 16, R. 2 W. of S.E. 1/4 of Sec. 1, T. 16, R. 2 W. in Boone County, Mo. N.W. corner of Sec. 36 relocated from one stump, S.E. corner of the tract on the of a Poplar stump in the Road a R. Oak 12 N. 55° E 32 Hickory 24 N. 53° E 15 Over his advancement is 16 of 1/4 of Sec. 36 as above. a Sugar 12 N. 20° E 23 a Ditto 11 S. 62 1/2° E 113 N.E. corner a B. Oak 10 S. 83° W 5 1/2 Hickory 15 S. 6° W 113



Section 36 T17 North, Range N. 2 West.

Corners	Names	sq. cor.	Witness	Dr.	Bearings	links
1/2 mile on East of 36			Old Rocks of Hickory witness			
a Stone			a Birch	24	N. 48° W	68
			a B. Walnut	6	North	87 on line
Center West corner of			Section 31, T. 17 - 1 West, a Stone 20 + 10 + 8:			
Center of NE 1/4 of Sec. 36			T. 17 - 2 West a Stone	15 + 12 + 8		
			an Elm	24	N. 28 1/2° E	214
			a Walnut = 30	N. 82° E	29	
Then North 58 Rods			to set off 29 acres			
a Stone 24 + 12 + 9			a B. Walnut	3	S. 7° W	30
Then East across the			40; a Stone 18 + 16 + 19, Birch 6 + 33			
N.E. cor of Sec.			a Maple	6	S 84 1/2° W	16 1/2

a Continuation of.

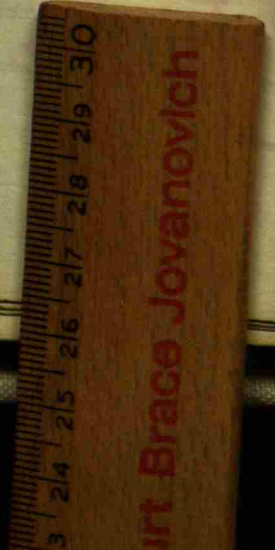




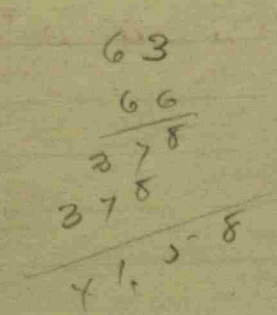




The following is a description of a Survey made for J. H. Campkin; to wit  
 Beginning 44 links North of the South line of the South East quarter of the  
 North West quarter of Section 33, T17 R2W, in the Cranfordsville  
 Cranfordsville, Ind: at a stone 6 x 18 inch, witnessed by a good stone. South 45° East  
 63 links also, by a Black Walnut, 12 inch South 42° East 175 links; which point was  
 found upon by George Huce & J. H. Campkin. The old deed being wrong. Thence  
 South 68° West (from a true Meridian) 80 Rods & 9 links; to a Hickory Stump  
 witnessed by an Elm 8 inch Bearing North 78 1/2° West 30 links; Thence South 88 1/2°  
 West, 23.2 Rods to the Section line to a Hickory = Thence North 102 1/2° Rods  
 to a Point marked on the Section line in the Centre of the Cranfordsville  
 State road; Thence South 59° East with the centre of said road - 50 Rods;  
 to the West line of a 6 1/10 acre tract described in the field notes; Thence North  
 14 1/2° East with said line 15 6/10 Rods; Thence North 86 1/2° East by old Survey, 809 chains  
 Thence North to the Centre of said North West quarter Section; Thence South  
 Thence East to the centre on the East of said quarter Section; Thence South  
 to the Centre of said Section; Thence West, to a Point in the Cranfordsville  
 State road crossed the South line of said North West quarter Section.  
 Thence North 44 links to the place of beginning Estimated to contain 80 1/5 acres.  
 in all -



97 <sup>acres</sup> Beginning at a Point 55 Rods East of the centre of Section 32, T17 R2W -  
 Thence North 52 Rods; to a stone found on the field notes; Thence North 14 1/2° East by  
 the old line 49 Rods; (as found by an old witness) ~~Thence~~ Revisited by a good  
 Stone South 3° West 25 links; Thence South 28° East from a true Meridian, 8 Rods -  
 to the North side of the road at the East End of the Bridge; Thence South 52° East 242 links  
 to the Centre of the road; Thence South 79° East with the centre of the road, 76 Rods,  
 Thence South 67° East 216 links to the Section line; Thence South with said line  
 69 Rods to the East 1/2 mile Stone; Thence South with Section line 80 Rods to the  
 Centre on the East of the South East quarter of said Section; Thence West  
 West to the Centre of this <sup>said</sup> South East quarter Section 80 Rods; Thence West  
 24 Rods to the East Side of the Creek; Thence North 53° East 5 Rods; Thence North  
 11 Rods; Thence North 28° East 14 Rods; Thence North 12 Rods; Thence North  
 48° East 4 5/10 Rods to the line Running N & S through the centre of said S. E. 1/4  
 Section; Thence North to the centre East of centre of said Section  
 Thence West 25 1/2 Rods to the place of Beginning - Estimated to contain  
 97 acres, More or less -





County Public Roads in T. 17 North, Range 2 West

In Hendricks County, State of Indiana.

Road in the NW corner of the County, N. from Carter's Mill of Section 18, T. North:

Thence East 49 1/2 poles on line  
 Thence N. 77 1/2 E. 38 poles  
 Thence N. 87 1/2 E. 19 poles  
 Thence S. 47 E. 7 1/2 poles  
 Thence East 51 1/2 poles on line  
 Thence East 1/2 of a mile where  
 Thence S. 85 E. 24 poles to  
 Thence N. 57 E. 3 poles to  
 Thence East 67 poles to the  
 Thence East 233 poles on line  
 Distance nearly 3 1/4 miles.

Jonathan Cartwright's Road NW corner of the County.  
 85 poles East of  
 where  
 Thence West a S. variation;  
 variation; to the NE corner  
 Thence S. at 60 variation, 88 poles,  
 Thence S. 68 W. 78 poles  
 Thence S. 46 W. 11 poles  
 Thence S. 82 1/2 W. 40 poles

Beginning at the S.W. corner Range 2 West:  
 a Sugar 20 S. 81 E 9  
 a Sugar 20 S. 76 E 51  
 an Ash 40 S. 21 W 30  
 an old Sugar Road the Corner  
 to 1/2 mile Post;  
 Thence East on line 67 poles: (about)  
 a Beech 15 N. 60 W 6  
 an Elm 12 north 3  
 the Section line  
 1/2 mile Post  
 to the Road at Carter's Mill;  
 Book C. 113

Beginning on the North line Sec. 16, T. 17 N. Range 2 W  
 the 1/2 mile Post;  
 an Ash 30 N. 85 E 14  
 Thence at 7 1/2 variation: Thence at 7 1/2  
 of Section 18. to 1/2 the Road.  
 a Beech 18 S. 14 E 63  
 a Beech 15 N. 75 W 41  
 a Sugar 10 S. 15 E 42  
 a Beech 18 S. 2 E 60  
 then to the top

Cartwright Road Continued Co. Witnesses Dr. Bearings links  
 Thence S. 76 W. 121 poles to Ranks East Line.  
 Thence S. 83 W. 80 poles + 15 lin. Ranks proposed change beginning  
 at his East line, where a Beech 18 S. 25 W 50  
 Thence South 9 poles 5 lin. with the line to the corner,  
 Thence West 81 poles with the line;  
 Thence North 7 1/2 poles to the Montgomery corner,  
 being 18 poles longer than is now used:  
 Book C. p. 45

Road, T. 17 N. Range 2 W.  
 of Sections 27, 28, 33 & 34  
 1 mile + 18 poles:  
 Thence North 7 1/2 E. 11 poles  
 Thence East 204 poles + 30 lin  
 Thence North 240 poles  
 Thence North 6 poles extend  
 Road leading from Danville to James Town.  
 Book C. p. 116

Road Beginning in Crawfordville Indiana, on State Road,  
 near John Shroy's  
 Town, to Indianapolis, where  
 Thence North on the line  
 + James Groover, and  
 + James Caldwell,  
 =wright (Seed) and  
 to the next page

Beginning at the corner  
 Thence East on Sec. line  
 Thence S. 87 E. 10 poles:  
 to the first line:  
 to Spear's NE corner:  
 with Section bearing:  
 ing the line, to the County  
 ville to James Town.  
 Book C. p. 116

Beginning in the State Road leading  
 from Crawfordville through James  
 At Hickory 22 S. 5 E 350  
 dividing the lands of John Shroy  
 the lands of Jesse Hendricks  
 and the heirs of David Root-  
 Samuel Pennyry + Washington

County Public Roads in T. 17 North, Range 2 West

a continuation of.

Same Road Continued Co. Witnesses Dr. Bearings links  
 Gill, 1 mile + 1 pole to the mouth of the lane, or a point  
 due East of said Perry's lane;  
 Thence S. 86 1/2 W. 80 poles through the said Perry's lane  
 to the Range line between Range 1 + 2 West;  
 where  
 Thence North 40 p. + 10 lin. with said line, on the lands of the  
 said Perry, to the Doone County line, Book C. p. 94

Road, petitioned for by John Adams:  
 Thence South 2 miles:  
 on East side of line  
 Thence S. 16 E. 6 poles:  
 Thence S. 18 W. 9 poles + 10 lin  
 Thence S. on E of line 70 poles  
 Thence S. 28 W. 6 poles:  
 Thence S. 5 W. 31 poles:  
 Thence S. 35 W. 9 poles to  
 =ville State Road

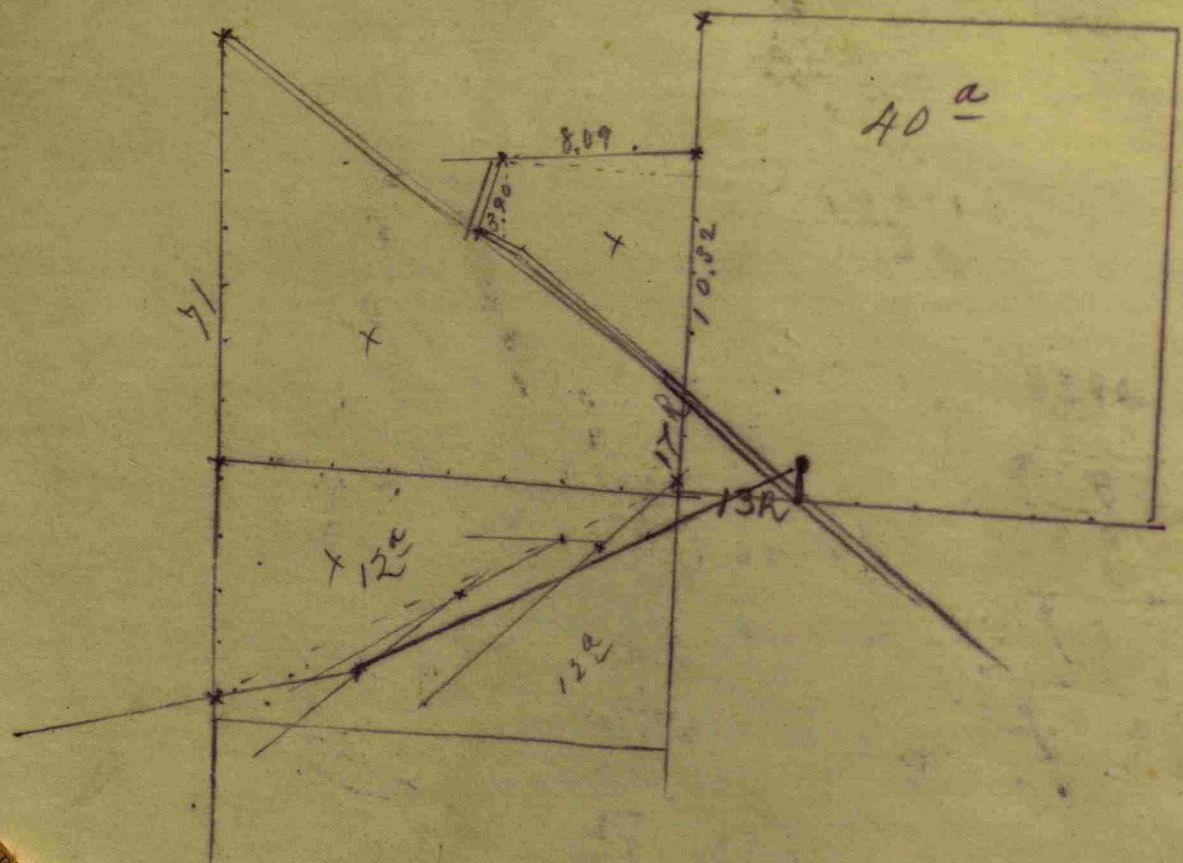
Commencing on the North line  
 between Sec. 16 + 17, T. 17 N. R. 2 West;  
 Thence West 80 poles: Thence South  
 160 poles: + continuing East 9 poles:  
 Thence S. 47 E. 12 poles:  
 to within 12 1/2 feet of the line dividing the pp  
 Thence S. 33 E. 5 poles + 8 links;  
 Thence South 43 1/2 poles to Sec. line;  
 Thence S. 59 W. 20 poles:  
 where it intersects the Crawfordville  
 State Road  
 Distance 3 miles + 139 p. Book C. p. 182

Road in El River Town = ship  
 25 + 26 1/2 + 36 1/2 R. 2 W  
 Thence N. 62 W. 25 p. + 15 lin  
 Thence N. 76 W. 13 p. + 20 lin  
 where

Beginning at the corner of Sec.  
 Thence North on the Sec. line 136 p.  
 to an Oak 24 the corner.  
 Thence N. 38 1/2 W. 46 1/2 poles to  
 an Oak 24 is the corner  
 then to the top

Road in El River Town, Co. Witnesses Dr. Bearings links  
 Thence N. 2 1/2 W. 19 poles + 21 lin Thence N. 9 1/2 W. 37 poles + 20 links.  
 Thence N. 35 W. 54 poles + 23 lin Thence N. 27 1/2 W. 34 1/2 poles;  
 Thence West 17 poles + 20 links Thence N. 41 poles + 6 links;  
 Thence N. 66 W. 10 p. + 2 links a B. Oak 12 S. 11 W 35  
 Thence S. 80 W. 35 poles: Thence N. 47 1/2 W. 117 poles + 24 links  
 where a Hickory 22 N. 61 E 71  
 Thence N. 13 poles + 16 links Thence N. 57 1/2 W. 27 poles + 20 links  
 Thence N. 53 W. 14 p. + 6 lin: Thence N. 53 W. 14 poles + 6 links:  
 Thence N. 68 1/2 W. 144 p. + 14 lin a W. Walnut 12 S. 39 1/2 E 35 1/2  
 Thence N. 17 W. 115 poles: Thence N. 33 E. 17 p. + 14 lin: across El River.  
 Thence N. 17 1/2 W. 12 p. + 16 lin a Hickory 8 S. 60 E 42 1/2  
 Thence N. 15 W. 64 poles: Thence N. 60 W. 3 poles to the lands of  
 John Gibson; where a Sugar 14 S. 63 1/2 E 84  
 + a Ditto 16 S. 25 W 95  
 Book C. p. 151





Exp 18.72 Lt 10  
 550  
 1800  
 1000  
 2000  
78.22 44

84  
 40  
23360  
 1680

84  
 31 1/2  
 84  
 252  
 42  
22646  
 16 | 1823 (8  
 128  
 48

447!  
 2876  
 118

15525 887  
 3'87  
10864  
 12416  
 4556  
21600624  
 800.

4128  
 1552  
25730  
 289  
 82  
578  
 867  
16 | 924.8 (6  
 9.6

3192  
 228  
9576  
 6382  
 6384  
21711796  
 35.

1032  
 4128  
 3192  
8256  
 37152  
 4128  
12384  
 16 | 13176574

71  
 17  
288  
 44  
22  
 12  
40  
 41  
 802







102  
71R  
31

