

Roads 1914

Cummings

Nash

Nicks

Clay

Hant

Page

LEVEL BOOK

## C A Cummings

STA.	B.S.	H.I.	F.S.	ELEV.	GRADE	CUT	FILL
------	------	------	------	-------	-------	-----	------

Beginning at a point 578 ft  
Tp 16 N R 1 E and 16.6 ft  
Stone and stone at Cen E  
of Walter G Hadley et al  
and Washington Tps

Thence N 10° 35' W to a  
said Sec 28 511' E of NW  
Sta 13+40

Thence west on north  
511' to NW Cor thence at  
Cray ash S 65° W .37 ch

Thence north to stone  
+ 88 witnesses B walnut  
Stone S 85° W 12.7'

Thence north to Cen  
by bridge and fence witn-  
ch, Cotton wood 16" diam

Thence north to stone  
Stone N W  
Sta 58+60

Thence west to stone  
E. end south parapet cover  
" north " "  
Sta 71+84

## et al Road.

STA.	B.S.	H.I.	F.S.	ELEV.	GRADE	CUT	FILL
------	------	------	------	-------	-------	-----	------

West of E<sup>2</sup> mi stone of Sec 28  
north of line between E<sup>2</sup> mi  
Cen said Sec at terminus  
Road on line between Lincoln

pt on the N line of SE<sup>4</sup> NE<sup>4</sup>  
Cor said quarter quarter.

line of said quarter quarter  
Sta 1851 no stone witnesses  
stone south on line .22 ch

Cen N NE<sup>4</sup> Sec 28 Sta 31  
16" diam S 55° E 27' and

SE<sup>4</sup> Sec 21, no stone  
witnesses Sycamore 14" N 80° W .82  
N 40° E .53 ch Sta 45+40  
at Cen N SE<sup>4</sup> witnesses  
B walnut 24" diam N 10° E 95'

at Cen Sec 21 witnesses  
etc bridge S W 86.7'  
" " N W 86.5'

STA.	B.S.	H.I.	F.S.	ELEV.	GRADE	CUT	FILL
------	------	------	------	-------	-------	-----	------

Thence west to stone  
Sugar tree  $24^{\circ}$  N  $25^{\circ}$  W 40'  
Sta 84+4 (two stakes)  
Thence west to W<sup>2</sup> mi  
stone N  $60^{\circ}$  W 33'  
on line between Lincoln  
Thence South to Stone  
Stone S  $85^{\circ}$  E 15'  
Thence South to stone  
point on the north line of  
Common Corner of Lincoln  
of the Walter G Hadley

BM	.40	93.35		92.95			
0			7.10	86.25	86.25		
0	4.80	91.15					
1			11.05	80.00	82.75	2.75	
2			11.92	79.13	81.00	1.87	
2	4.25	83.38					
1+60	Wend		7.30	76.08			
"	E end		7.85	75.53			
2	12.00	91.13					
3			6.04	85.09	82.97	2.12	
4			.87	90.26	86.90	3.36	

STA.	B.S.	H.I.	F.S.	ELEV.	GRADE	CUT	FILL
------	------	------	------	-------	-------	-----	------

Cor W Cen Sec 21 witnesses  
Beech 20" diam N  $25^{\circ}$  E 49'  
marked 72 )  
Stone Sec 21 witnesses  
B Walnut 12" diam N  $55^{\circ}$  E 50'  
and Middle Tps Sta 97+27  
S.W. Cor Sec 21 witnesses  
Stone N  $85^{\circ}$  W 15' Sta 124+2  
at W<sup>2</sup> mi of Sec 28, a  
Washington Tp and the  
and Middle Tps, the beginning  
et al Road Sta 150+67

Concrete walk gate White Lick Church

1+50 81.00

2+50 81.00

15" Corrugated pipe 16' long in  
place. Drains 50 A rolling land. Flow  
east. Replace with 4' arch Culvert  
24' long Remove old pipe to Sta  
93+80

STA.	B.S.	H.I.	F.S.	ELEV.	GRADE	CUT	FILL	STA.	B.S.	H.I.	F.S.	ELEV.	GRADE	CUT	FILL
4+20				91.13											
4	5.52	95.78													
5			4.95	90.83	90.83										
6			4.96	90.82	91.15		.33								
7			4.85	90.93	91.48		.55								
6+95	E end		6.45	89.33											
"	W end		6.95	88.83											
8			4.16	91.62	91.80		.18								
9			3.00	92.78	92.13		.65								
10			1.10	94.68	92.45		2.23								
11			3.00	92.78	92.78										
12			3.30	92.48	93.10		.62								
12	6.65	99.13													
12+4	Bend		7.94	91.19											
	W end		7.50	91.63											
13			6.62	92.61	93.43		.82								
14			6.27	92.86	93.75		.89								
15			4.75	94.38	94.08		.30								
16			4.96	94.17	94.40		.23								
17			4.90	94.23	94.73		.50								
18			4.60	94.53	95.05		.52								
BM			1.10	98.63											
19			3.90	95.23	95.38		.15								
20			3.55	95.58	95.70		.12								

line of sight level Willard Merritt's gate

Flows west. Put in 12" Corrugated  
Iron pipe 24' long

Flows east. Put in 12" Cor.  
Iron pipe 24' long

Stump of witness tree

STA.	B.S.	H.I.	F.S.	ELEV.	GRADE	CUT	FILL	STA.	B.S.	H.I.	F.S.	ELEV.	GRADE	CUT	FILL
20	6.30	101.88													
20+25	End		7.80	94.08											
	W end		7.80	94.08											
21			6.15	95.73	96.03		.30								
22			5.84	96.04	96.35		.31								
23			5.19	96.69	96.68	.01									
23+60	W end		6.75	95.13											
	E end		7.18	94.70											
24			4.85	97.03	97.00	.03									
25			4.30	97.58	97.33	.25									
26			2.60	99.28	97.65	1.63									
27			3.90	97.98	97.98										
28			4.18	97.70	98.08		.38								
29			4.20	97.68	98.18		.50								
29	6.60	104.28													
30			6.55	97.73	98.28		.55								
31			5.60	98.68	98.38	.30									
32			5.35	98.93	98.48	.45									
33			4.88	99.40	98.58	.82									
34			5.40	98.88	98.68	.20									
35			6.08	98.20	98.78		.58								
36			6.00	98.28	98.88		.60								
37			6.00	98.28	98.98		.70								
38			5.40	98.88	99.08		.30								

Flows east. Put in 12" cor iron pipe 24' long

Flows east. Put in 12" cor iron pipe 24' long. Remove 10" pipe to 84+50

STA.	B.S.	H.I.	F.S.	ELEV.	GRADE	CUT	FILL	STA.	B.S.	H.I.	F.S.	ELEV.	GRADE	CUT	FILL
38	2.60	101.48													
39			1.67	99.81	99.18	.63									
40			2.20	99.28	99.28	—									
41			3.62	97.86	97.86	—									
42			4.80	96.68	93.38	3.30									
BM			2.10	99.38											
43			5.18	96.30	88.90	7.40									
44			11.17	90.41	84.43	5.98									
44	2.03	92.44													
0			11.55	80.89											
0	.55	81.44													
45			2.75	78.69	79.95		1.26								
0			12.40	69.04											
0	2.27	71.31													
46			4.75	66.5	67.547		8.91								
BM.			6.63	64.68											
46+30			56.76		Creek bottom										
47			5.27	66.04	71.00		4.96								
48			3.85	67.46	71.00		3.54								
49			1.16	70.15	73.22		3.07								
49	12.00	82.15													
50			7.86	74.29	77.67		3.38								
51			2.32	79.83	82.11		2.28								
51	12.20	92.03													

Cummings barn gate  
" yard "

top end post east side opposite 42+60

S. end of old bridge  
flat part Sycamore stump N side  
of Creek 50' E road.

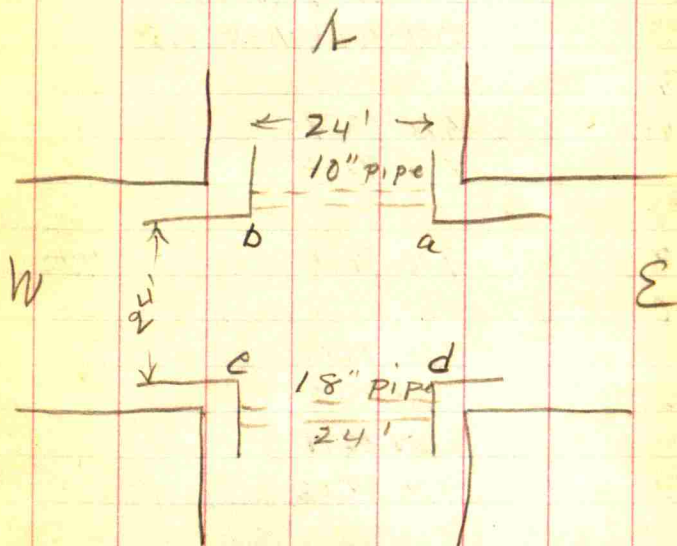
9.80' below sta 46

48+50 71.00

46+30 Remove old deck truss  
bridge and replace by concrete  
arch 20' span 10' rise  
36' long, flows east.

STA.	B.S.	H.I.	F.S.	ELEV.	GRADE	CUT	FILL
52			4.25	87.78	86.56	1.22	
0			.79	91.24			
0	5.94	97.18					
53			4.16	93.02	91.00	2.02	
54			2.54	94.64	91.00	3.64	
55			5.50	91.68	90.50	1.18	
56			7.80	89.38	90.00		.62
56+30	E end		9.60	87.58			
"	W end		8.10	89.08			
57			7.93	89.25	89.50		.25
58			9.50	87.68	89.00		1.32
58	4.95	92.63					
a			8.55	84.08			
b			6.44	86.19			
c			6.44	86.19			
d			8.90	83.73			
e	12.65	98.84					
59			10.34	88.50	89.00		.50
60			5.67	93.17	92.87	.30	
B.M.			7.10	91.74			
60+50			.50	98.34			
61			2.10	96.74	96.74		
61	9.00	105.74					
61+50			5.95	99.79			

56+30 Put in 12' eor iron pipe  
24' long flows east.



Witness stone NW cor  
Everett's yard gate 20' north property line

Everett's barn gate 10' north of property line

STA.	B.S.	H.I.	F.S.	ELEV.	GRADE	CUT	FILL	STA.	B.S.	H.I.	F.S.	ELEV.	GRADE	CUT	FILL
62			6.15	99.59	99.59										
63			4.85	100.89	100.89										
64			4.52	101.22	100.89	.83									
65			3.92	101.82	100.89	.93									
66			3.85	101.87	100.89	1.00									
67			3.30	102.44	100.89	1.55									
67	.75	103.19													
68			4.90	98.29	96.66	1.63									
0			11.18	92.01											
0	.25	92.26													
69			1.72	90.54	92.44		1.90								
70			8.48	83.78	88.22		4.44								
71			11.00	81.26	84.00		2.74								
72			11.35	80.91	84.00		3.09								
B.M.			6.55	85.71											
72			7.80	84.46	84.00	.46	3.71								
73			3.85	88.41	88.64		.23								
73	11.75	100.16													
74			2.47	97.69	93.28	4.41									
74	11.38	109.07													
75			5.15	103.92	97.92	6.00									
75+80	1x end		5.86	103.21											
"	S. end		5.15	103.92											
76			3.81	105.26	102.56	2.70									

South Parapet Concrete bridge  
 two stakes marked 72  
 Between sta 72 and 73 straighten  
 brook by ditch 100' long and  
 divert it from contact with the  
 Road.

Waterway taken out by the grade.



STA.	B.S.	H.I.	F.S.	ELEV.	GRADE	CUT	FILL	STA.	B.S.	H.I.	F.S.	ELEV.	GRADE	CUT	FILL
77			1.87	107.20	107.20	—									
78			.40	108.67	108.67	—									
79			1.25	107.82	107.82	—									
79	.85	108.67													
79+60			2.24	106.43											
80			2.50	106.17	106.17	—									
81			7.56	101.11	102.08		.97								
82			11.17	97.50	98.00		.50								
83			11.56	97.11	98.67		1.56								
84			11.00	97.67	99.34		1.67								
B.M.			4.50	104.17											
85			10.15	98.52	100.00		1.48								
86			8.00	100.67	100.67	—									
83	4.85	101.96													
82+30	S. end		8.10	99.86											
"	N. end		9.10	92.86											
			4.00	97.96											
BM	6.25	110.42													
84+50	S. end		12.90	97.52											
	N. end		14.40	96.02											
85+80			12.80	97.62											
87			3.62	106.80	104.12	2.68									
Beech root			.50	109.92											
"	880	118.72													

Beech Graham's gate.

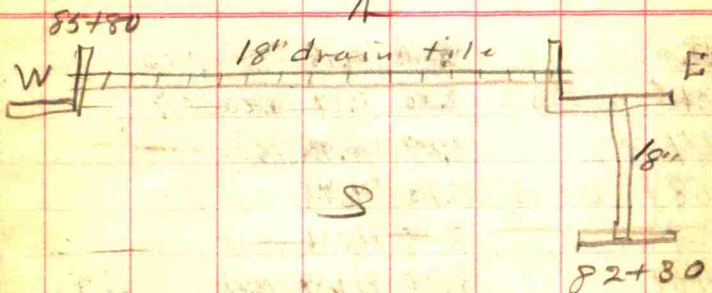
top end post between Graham's and Shockley's south side of Road.

Drains 25A rolling ground. Put in 18" Cor iron pipe 24' long flusing Point to which new grade shall be raised.

Put in 10' pipe taken from 23+60 and lengthen by addition of 8' flows north.

tied up for dinner.

STA.	B.S.	H.I.	F.S.	ELEV.	GRADE	CUT	FILL	STA.	B.S.	H.I.	F.S.	ELEV.	GRADE	CUT	FILL
88			7.63	111.09	107.57	3.52		85+80							
89			5.58	113.17	111.02	2.17		W							
90			4.25	114.47	114.47			18" drain tile							
90+75	Send		5.60	113.12											
	Acnd		6.15	112.57				S							
91			4.47	114.25	114.53		.28								
92			3.35	115.37	114.59		.78								
93			5.40	113.32	114.65		1.33								
93	987	123.19													
93+80	Send		11.70	111.49											
	Acnd		11.85	111.34											
94			9.64	113.55	114.71		1.16								
95			8.42	114.77	114.77										
96			6.48	116.71	116.23		.48								
97			4.90	118.29	118.29										
98			3.78	119.41	119.41										
99			3.46	119.73	119.73										
100			3.70	119.49	119.56		.07								
101			3.80	119.39	119.39										
101	1.10	120.49													
102			2.40	118.09	118.09										
103			7.65	112.84	114.04		1.20								
104			11.60	108.89	110.00		1.11								
105			12.30	107.99	110.00		2.01								



90+75 Put in 10" pipe taken from  
93+80 and lengthen by the addition  
of 8' flows north

93+80 Put in 15" pipe taken  
from 1+60 and lengthen by the  
addition of 8' flows north

STA.	B.S.	H.I.	F.S.	ELEV.	GRADE	CUT	FILL
105+45			18.50	101.99	Stream bottom		
106			8.80	111.69	110.00	1.69	
107			4.09	116.40	113.00	3.40	
108			5.78	114.71	113.00	1.71	
109			7.18	113.31	113.00	.31	
110			8.90	111.59	113.00		1.41
111			9.75	110.74	113.00		2.26
111	6.90	117.64					
111+40	W. end	9.30	108.34				
"	E. end	9.15	108.49				
112			5.70	111.94	113.00		1.06
113			4.00	113.64	113.00	.64	
114			3.65	113.99	113.32	.67	
115			4.60	113.04	113.64		.60
116			4.63	113.01	113.97		.96
117			3.40	114.24	114.29		.05
118			2.70	114.94	114.61	.33	
119			2.70	114.94	114.94		
120			3.45	114.19	114.37		.18
121			4.00	113.64	113.81		.17
121	3.35	116.99					
122			4.40	112.59	113.25		.66
123			4.85	112.14	112.69		.55
124			5.00	111.99	112.13		.14

Brick arch cracked. Replace  
with Concrete arch 8' span  
6' rise 30' long flows east.

Put in 24" Cor iron pipe  
24' long flows east

STA.	B.S.	H.I.	F.S.	ELEV.	GRADE	CUT	FILL
B.M.			4.53	112.46			
125			5.65	111.34	111.57		.23
126			5.65	111.34	111.01	.33	
127			6.40	110.59	110.45	.14	
128			7.10	108.89	108.89		
129			8.05	108.94	108.83		.89
129	5.85	114.79					
129+35	W. end		9.10	105.69			
"	E. end		9.10	105.69			
130			5.88	108.91	109.76		.85
131			4.08	110.71	109.70	1.01	
132			3.95	110.84	109.63	1.21	
133			5.17	109.62	109.57	.05	
134			5.95	108.84	109.50		.66
135			6.75	108.04	108.44		1.40
135	3.70	111.74					
134+90	W. end		4.95	106.79			
"	E. end		4.90	106.84			
136			2.85	108.89	108.37		.48
137			2.43	109.91	109.31		
138			3.96	107.78	107.56	.22	
139			5.94	105.80	105.80		
140			7.05	104.69	105.57		.88
141			7.80	103.94	105.35		1.41

STA.	B.S.	H.I.	F.S.	ELEV.	GRADE	CUT	FILL
------	------	------	------	-------	-------	-----	------

Witness rock E. Side Road.

16' long  
24" corr. iron pipe in place.  
Lengthen <sup>to 24'</sup> by additions to each  
end. flows east

10" corr. iron pipe 16' long in  
place. Lengthen to 24' by  
additions to each end, flows  
east.

STA.	B.S.	H.I.	F.S.	ELEV.	GRADE	CUT	FILL
142			8.50	103.24	105.12		1.88
142	5.90	109.14					
142+5	E end		8.15	100.99			
"	W end		8.35	100.79			
143			3.98	105.16	104.90	.26	
144			3.65	105.49	104.67	.82	
145			4.86	104.28	104.45		.17
146			5.22	103.92	104.22		.30
147			5.85	103.29	103.99		.70
148			5.96	103.24	103.77		.53
148	6.00	109.24					
147+10	E end		7.90	101.34			
"	W end		7.30	101.94			
149			5.12	104.12	103.54	.58	
150			4.75	104.49	103.32	1.17	
150+67			6.07	103.17	103.17		

24" Cor iron pipe 16' long  
in place. Lengthen by additions  
to each end to 24' Drains  
40 A level land, flows east.

Put in 10" Cor iron pipe 24'  
long flows east drains  
8 A. level land



## Nash et al Road

STA.	B.S.	H.I.	F.S.	ELEV.	GRADE	CUT	FILL
------	------	------	------	-------	-------	-----	------

Beginning at a stone at which point is on the line between Brown and is also the terminus of the latter Township.

Thence east to a stone at apple tree 10" diam bears S 35° W S 65° W 88.2' Sta 13+31

Thence east to a stone at 28" diam bears S 40° E 62' and 68' Sta 26+63

Thence east to a stone at catalpa 10" diam bears N 50° W diam N 65° W 57' Sta

Thence east to a stone a locust post bears N 80° W 25' Sta 53+4

Thence south to a stone TP and R whence an end post cherry 3" diam S 30° E 44'

Thence south to a stone B. walnut 22" diam bears in diam N 87° E 100'

Thence south to a stone a corner post bears N 45° E

## Brown Township.

STA.	B.S.	H.I.	F.S.	ELEV.	GRADE	CUT	FILL
------	------	------	------	-------	-------	-----	------

N.W. cor Sec 33 T 17 R 1 E the townships of Middle and as of the Wm Tent et al Road in the

Cent N N W<sup>4</sup> Sec 33 whence an 31.2' and a sycamore 12" diam

N<sup>2</sup> mi Sec 33 whence an elm an evergreen 12" diam S 60 W

Cent N N E<sup>4</sup> Sec 33 whence a 23' and another catalpa 8" 39+84

at the N E Cor Sec 33 whence 85' and a corner post S 45° E

at Cent W N W<sup>4</sup> Sec 34 some bears west 15' and a tame Sta 66+37

at W<sup>2</sup> mi Sec 34 whence a N 47° E 54' and a beech 28" Sta 79+65

at SW cor of Sec 34 whence 30' and another N 45° W 24' Sta 106+47

STA.	B.S.	H.I.	F.S.	ELEV.	GRADE	CUT	FILL
------	------	------	------	-------	-------	-----	------

Thence east to a stone  
an apple tree 12" diam bears  
16" diam N 40° W 46 links

Thence east to a stone at  
bears an elm 25"  
123' Sta 146 + 29

Thence east to a stone  
whence bears a large  
another N 60° W 60"  
Sec 34 being 112' East.

B.M	1.00	99.69		98.68			
0				4.70	94.98	94.98	
1				4.60	95.08	95.06	02
2				4.80	94.88	95.15	.27
3				4.55	95.13	95.23	.10
4				4.70	94.98	95.32	.34
4 S. end		6.30		6.30	93.38		
4 N. end		6.25		6.25	93.43		
5				4.35	95.33	95.40	.07
6				2.65	97.03	95.49	1.54
7				4.10	95.58	95.58	
8				4.96	94.74	94.75	.01
8	1.20	95.94					

STA.	B.S.	H.I.	F.S.	ELEV.	GRADE	CUT	FILL
------	------	------	------	-------	-------	-----	------

at the S<sup>2</sup> mi Sec 34 whence  
S 150 W 64 links and on elm  
Sta 133

the Cen S SE<sup>4</sup> Sec 34 whence  
in diameter S 80° E

at N<sup>2</sup> mi Sec 2 TP 16 R 1 E  
Stone S 60 W 34' and  
Sta 1.58 + 48, the SE cor

End post opposite Sta 0 on South  
side of Road, Same datum plane as  
to Tent Road.

Put in 10" pipe 24' long, flows  
South





STA.	B.S.	H.I.	F.S.	ELEV.	GRADE	CUT	FILL	STA.	B.S.	H.I.	F.S.	ELEV.	GRADE	CUT	FILL
BM		9354	2.50	91.04											
27			2.50	91.04	88.85	2.19									
28			3.12	90.42	88.78	1.64									
29			3.30	90.24	88.72	1.52									
30			3.80	89.74	88.65	1.09									
31			4.95	88.59	88.59										
32			5.60	87.94	87.91	.03									
33			6.70	86.84	87.23		.39								
34			7.22	86.32	86.55		.23								
35			7.60	85.94	85.87		.07								
36			8.35	85.19	85.19										
36	4.10	8929													
37			4.60	84.69	85.16		.48								
37+60	Send		10.20	79.07											
	Acad.		9.93	79.36											
38			4.80	84.49	85.14		.65								
39			4.70	84.59	85.11		.52								
40			4.20	85.09	85.09										
40+20			8.40	80.89											
BM			00	8929											
41			3.55	85.74	86.55		.81								
42			1.75	87.54	88.00		.46								
42	5.50	9304													
43			1.95	92.09	88.00	3.09									

Stone on South Side of Road  
near mail box

Brick arch in good condition  
leave in place.

End post opposite sta 39+84 on South  
side of Road

Lay 8" drain tile from 40+20  
back to 37+60 on north side  
of the Road. elev upper end  
80.89, lower 79.36 uniform  
grade .6' per 100'

STA.	B.S.	H.I.	F.S.	ELEV.	GRADE	CUT	FILL
44			5.00	88.04	88.00	.04	
45			7.30	85.74	86.12		.38
46			8.80	84.24	84.24		
BM			11.40	88.64			
47			9.30	83.74	84.04		.30
48			9.70	83.34	83.83		.49
49			10.20	82.84	83.62		.78
49	6.65	89.49					
50			6.75	82.74	83.41		.67
50 + 40 N end			8.55	80.94			
			S. end	8.60	80.89		
51			6.66	82.83	83.20		.37
52			6.50	82.99	82.99		
53			5.60	83.89	83.40	.49	
53 + 4 N end			6.65	82.84			
			S. end	6.70	82.79		
54			5.20	84.29	83.81	.48	
55			4.62	84.87	84.22	.65	
B.M.			4.26	85.23			
56			3.50	85.99	84.63	1.36	
57			3.55	85.94	85.04	.90	
58			4.05	85.44	85.44		
59			4.40	85.09	85.31		.22
60			4.30	85.19	85.19		

STA.	B.S.	H.I.	F.S.	ELEV.	GRADE	CUT	FILL
------	------	------	------	-------	-------	-----	------

Large Post on north side of Road  
between stas 46 and 47

Put in 18" pipe + flows north

Cross Roads, Put in 12" pipe  
across end of east road with  
L-shaped headers to divert the  
water coming from the east and  
south to the north

End of Concrete Walk Squankum  
Church.

STA.	B.S.	H.I.	F.S.	ELEV.	GRADE	CUT	FILL
60	4.25	89.44					
61			4.05	85.39	85.07	.32	
62			3.55	85.89	84.95	.94	
63			4.45	84.99	84.83	.16	
64			4.91	84.53	84.71		.18
65			4.90	84.54	84.60		.06
66			5.10	84.34	84.48		.14
67			5.30	84.14	84.36		.22
67+5	E end		7.15	82.29			
	W end		7.12	82.32			
68			5.20	84.24	84.24		
69			4.80	84.64	84.12	.52	
70			5.55	83.89	84.00		.11
70	3.70	87.59					
71			4.50	83.09	83.88		.79
72			4.60	82.99	83.77		.78
72+60	E end		6.65	80.94			
	W end		6.40	81.19			
73			4.93	82.66	83.65		.99
74			4.60	82.99	83.54		.55
75			4.65	82.94	83.42		.48
76			3.90	83.69	83.30	.39	
B.M.			2.05	85.54			
77			4.50	83.09	83.19		.10

STA.	B.S.	H.I.	F.S.	ELEV.	GRADE	CUT	FILL

Put in 12" pipe flows east.

Put in 12" pipe flows east.

front step Theo. Ganner's house.

STA.	B.S.	H.I.	F.S.	ELEV.	GRADE	CUT	FILL	STA.	B.S.	H.I.	F.S.	ELEV.	GRADE	CUT	FILL
94			4.20	80.32	80.00	.32									
95			4.10	80.42	80.00	.42									
96			4.30	80.22	80.00	.22									
97			4.35	80.17	80.00	.17									
98			3.90	80.62	80.00	.62									
98	3.90	84.52													
99			3.80	80.72	80.00	.72									
100			4.10	80.42	80.00	.42									
101			3.93	80.59	80.00	.59									
102			4.67	79.85	80.00	.15									
103			5.60	78.92	79.64	.72									
103+80	E end		8.05	76.47											
	W. end		7.90	76.62											
104			5.93	78.59	79.28	.69									
105			5.60	78.92	78.92										
106			6.43	78.09	78.15	.04									
106	2.30	80.39													
B.M.			2.95	77.44											
107			3.20	77.19	77.18	.01									
108			4.20	76.19	76.32	.13									
109			3.88	76.51	75.45	1.06									
110			6.60	73.79	74.59	.80									
111			7.00	73.89	74.59	.20									

Put in 12" pipe flows east.

Base of Concrete Corner Post at  
N E Cor.

STA.	B.S.	H.I.	F.S.	ELEV.	GRADE	CUT	FILL
111+60	11.80	80.39	9.20	71.19			
	Send		9.90	70.49			
112			7.60	72.79	74.59		1.80
113			6.70	73.69	74.59		.90
113	5.70	78.79					
114			3.85	74.94	74.59	.35	
115			2.93	75.86	74.59	1.27	
116			3.70	75.09	74.59	.50	
117			4.20	74.59	74.59		
118			5.60	73.19	72.11	1.08	
119			9.15	69.64	69.64		
119+70	Send		12.35	66.44			
	11.80		11.80	66.99			
120			9.30	69.49	69.49		
121			6.85	71.94	71.52	.42	
121	7.50	79.44					
122			5.65	73.79	73.55	.24	
123			3.85	75.59	75.59		
124			3.73	75.71	75.71		
125			4.50	74.94	74.94		
126			5.20	74.24	74.17	.07	
127			5.83	73.61	73.40	.21	
128			6.83	72.61	72.63		.02
129			7.45	71.99	71.86		.13

STA.	B.S.	H.I.	F.S.	ELEV.	GRADE	CUT	FILL
------	------	------	------	-------	-------	-----	------

Put in 15" pipe flows south.

Put in 24" pipe flows south.

STA.	B.S.	H.I.	F.S.	ELEV.	GRADE	CUT	FILL	STA.	B.S.	H.I.	F.S.	ELEV.	GRADE	CUT	FILL
130			8.35	71.09	71.09										
130	.65		71.74												
131			4.5	71.29	76.32	.97									
132			1.60	70.14	68.30	1.84									
133			5.46	66.28	66.28										
B.M.			1.17	70.57											
133+85	Sand		11.60	60.14											
	in end		11.22	60.52											
134			7.90	63.84	66.28	2.44									
135			6.23	63.51	66.28	.77									
136			2.45	69.29	67.96	1.33									
137			2.10	69.64	69.64										
137	4.80		74.44												
138			4.45	69.99	69.99										
139			4.90	69.54	69.64	.10									
140			5.15	69.29	69.29										
141			4.85	69.59	66.40	3.19									
142			4.60	69.84	63.52	6.32									
143			7.10	67.34	60.64	6.70									
①			12.20	62.24											
①	.04		62.28												
144			1.00	61.28	57.76	3.52									
145			8.50	53.78	54.88	1.10									
①			12.00	50.28											

Rock between two trees over north fence.  
Put in 30' cut pipe - 24" long

STA.	B.S.	H.I.	F.S.	ELEV.	GRADE	CUT	FILL	STA.	B.S.	H.I.	F.S.	ELEV.	GRADE	CUT	FILL
0	225	52.53													
146			3.60	48.93	52.00		3.07								
147			5.20	47.33	52.00		4.67								
148			4.95	47.58	52.00		4.42								
149			4.95	47.58	52.00		4.42								
149	send		6.25	46.28											
	send		5.98	46.57											
150			4.95	47.58	52.00		4.42								
151			4.40	48.13	52.00		3.87								
B.M.			1.70	50.83											
152			.50	52.03	52.00	.03									
152	12.10	64.13													
153			14.45	49.68	52.00		2.32								
154			14.66	49.47	52.00		2.53								
155			10.70	53.43	57.63		1.20								
156			5.20	58.93	57.26	1.67									
157			1.90	62.23	59.89	2.34									
158			1.60	62.53	62.53										
158+48			3.20	60.93	61.45		.52								
52' east			3.75	60.38											

Put in 24" pipe flows south.

Southwest wing of iron bridge.



STA.	B.S.	H.I.	F.S.	ELEV.	GRADE	CUT	FILL
------	------	------	------	-------	-------	-----	------

Beginning at the point in the  
Ladoga Road on the half  
South Sec 30 Tp 17 N R 2 W  
Cen N Cen Sec 30 and S 2  
Semi Sec 19 was restored  
at Cen Sec 19 over stone  
intersecting line between  
stone at Cen S SE 4

Thence north to 3<sup>rd</sup> mi  
diam bears S 70° W 80'  
S 45° E 22.3' Sta 3+34

Thence jogging to west  
west of Cen Sec and jogg  
at Cen Sec 19 whence

and concrete corner  
two stakes being marked  
but once.

Thence north to a stone  
a Cedar 8" diam bears  
post west 15.3'

Thence north to a stone  
corner of a house N 45° W  
Sta 55+36

STA.	B.S.	H.I.	F.S.	ELEV.	GRADE	CUT	FILL
------	------	------	------	-------	-------	-----	------

Center of the North Salem and  
Section line dividing North and  
2 W on line between Stone at  
mi Sec 19 same Tp and Range  
by producing line from Stone  
north of S 2 mi and  
Stone at Cen S SW 4 and

Sec 19 whence B Walnut 16"  
and a Concrete Corner post

15' north to a point 15'  
ing back east 15' to stone

post N 40° W 27' Sta 28+90  
15 and the jog being measured

at Cen N Cen Sec 19 whence  
S 30° E 52' and a Concrete  
Sta 42+14

at N 2 mi whence bears the  
74' and a stone N 50° E 26'

STA.	B.S.	H.I.	F.S.	ELEV.	GRADE	CUT	FILL
------	------	------	------	-------	-------	-----	------

Thence north to a point  
Stone which is  $34\frac{1}{2}$  rods  
whence bears a stone  
pole S  $60^{\circ}$  E .37 ch

Thence N  $83\frac{1}{2}^{\circ}$  E across  
15' east of the east line  
by a point ch + 4 Sout

the set over of 4' to the  
more nearly preserve the  
whence bears an ash 22"  
Southwest Cor Hubbles barn

Thence north to a point  
Cen N E<sup>4</sup> Sec 18 whence  
S  $50^{\circ}$  E .81 ch and a brace

Thence north to a point  
at Cen N E<sup>4</sup> Sec 18

Sta 120+7 which point  
James town and Ladoga

0	104.48	1.80	112.68	102.68			
1		2.60	101.88	101.71	.17		
2		3.30	101.18	100.73	.45		

STA.	B.S.	H.I.	F.S.	ELEV.	GRADE	CUT	FILL
------	------	------	------	-------	-------	-----	------

which is 4' south of a  
north of the Cen Sec 18  
S  $40^{\circ}$  E .35 ch and a telephone  
Sta 87+41  
the W2 N E<sup>4</sup> Sec 18 to a point  
of said half quarter, directed  
W of a stone

Southward being made to  
old roadway, Sta 100+99  
diam S  $60^{\circ}$  E 87' and the  
S  $86^{\circ}$  E 106'

15' east of Stone at  
bears an apple tree 8' diam  
rock S  $80^{\circ}$  E .46 ch Sta 106+88  
15' east of a stone

is in the center of the  
Road.

STA.	B.S.	H.I.	F.S.	ELEV.	GRADE	CUT	FILL
3			4.73	99.75	99.75		
B.M.	4.48			100.00			
4			5.00	99.48	99.85		.37
5			5.85	98.63	99.95		1.32
5+5	W. end		6.90	98.58			
	E. end		6.73	97.75			
6			5.65	98.83	100.05		1.22
7			5.28	99.20	100.15		.95
8			5.25	99.23	100.25		1.02
9			5.25	99.23	100.35		1.12
9	5.40	10463					
10			4.80	99.83	100.45		.62
11			3.90	100.78	100.55	.18	
12			2.15	102.48	100.65	1.83	
13			2.60	102.03	100.74	1.29	
14			4.95	99.68	100.84		1.16
15			5.15	99.48	100.84		1.46
15			4.45	100.18	101.04		.86
16			3.40	101.23	101.14	.09	
17			4.00	100.63	101.24		.61
18			4.20	100.43	101.34		.91
18	5.80	10623					
19			5.50	100.73	101.34	.39	
20			4.80	101.43	101.43		

STA.	B.S.	H.I.	F.S.	ELEV.	GRADE	CUT	FILL
------	------	------	------	-------	-------	-----	------

West edge base concrete corner  
post S B Cor.

10A level land drains west. Put in  
12" pipe 24' long

two stakes marked 15-

STA.	B.S.	H.I.	F.S.	ELEV.	GRADE	CUT	FILL
21			2.78	103.45	101.40	2.05	
22			2.50	103.73	101.36	2.37	
23			4.90	101.33	101.33		
24			7.30	98.92	99.87		.95
25			8.80	97.43	98.40		.97
26			9.30	96.93	96.93		
27			9.50	96.73	96.75		.02
28			9.80	96.43	96.56		.13
28	4.60	101.03					
29			4.55	96.48	96.88	.10	
30			5.25	95.78	96.19		.41
31			5.15	95.88	96.00		.12
32			5.05	95.88	95.82	.16	
33			5.15	95.88	95.63	.25	
34			5.35	95.68	95.44	.24	
35			5.70	95.33	95.25	.08	
36			6.10	94.93	95.07		.14
36	3.40	98.33					
37			3.25	95.08	94.88	.20	
38			2.95	95.38	94.69	.69	
39			3.75	94.58	94.50	.08	
40			5.00	93.33	94.31		.98
40+90 E. end			7.25	91.08			
W. end			7.65	90.68			

Beginning at Sta 26 a 4" drain  
tile north to Sta 31, 5" to Sta 36  
and 6" to Sta 40+90 connecting  
with public ditch at 40+90

30" pipe 20' long in and lower than  
out let. Raise 8" and lengthen to 24'

STA.	B.S.	H.I.	F.S.	ELEV.	GRADE	CUT	FILL
			5.80	92.53			
41			4.75	93.38	94.12		.54
42			4.40	93.93	93.93		
B.M.			4.50	93.83			
43			3.70	94.63	93.18	1.45	
44			2.95	95.38	92.45	2.93	
44	.90	96.28					
45			1.95	94.33	91.71	2.62	
46			4.95	91.33	90.98	.35	
47			6.10	90.18	90.24		.06
48			6.85	89.43	89.51		.08
49			8.00	88.28	88.78		.50
50			8.60	87.68	88.78		1.10
50	4.15	91.83					
51			4.57	87.26	88.78		1.52
52			4.83	87.00	88.78		1.78
53			4.90	86.93	88.78		1.85
B.M.			2.27	89.56			
54			2.35	89.48	88.78	.70	
55			3.75	88.08	88.78		.70
Cross Roads			3.05	88.78			
"	12.30	101.08					
56			14.90	90.18	90.74		.56
57			8.70	92.38	92.69		.31

STA.	B.S.	H.I.	F.S.	ELEV.	GRADE	CUT	FILL
top of 30" pipe now in place.							
Base of north concrete gate post west side of Road.							
floor of iron bridge at 53+80 water line 8' below floor bridge 15' wide. Bridge to be left as it is and easy approaches to each end.							

STA.	B.S.	H.I.	F.S.	ELEV.	GRADE	CUT	FILL
58			5.85	95.23	94.64	.59	
59			4.50	96.58	96.58		
60			4.70	96.38	96.77		.39
61			4.53	96.53	96.96		.43
62			4.65	96.43	97.15		.72
63			4.60	96.48	97.34		.86
64			4.10	96.98	97.53		.55
60	4.73	101.11					
60	W end		6.23	94.88			
	E end		5.85	95.26			
64	6.80	103.78					
65			6.40	97.38	97.72		.34
66			5.75	98.03	97.91	.12	
67			5.05	98.73	98.10	.63	
68			4.88	98.90	98.29	.61	
69			4.80	98.98	98.48	.50	
70			5.10	98.68	98.68		
71			4.77	99.01	98.64	.37	
72			4.88	98.90	98.61	.29	
73			5.10	98.68	98.58	.10	
73	4.30	102.98					
74			4.35	98.63	98.55	.08	

Put in 12" pipe 24' long and  
L-shaped headers to divert  
water from north to west.

STA.	B.S.	H.I.	F.S.	ELEV.	GRADE	CUT	FILL		STA.	B.S.	H.I.	F.S.	ELEV.	GRADE	CUT	FILL
75			4.35	98.63	98.52	.11										
76			4.95	98.03	98.49		.46									
77			4.95	98.03	98.46		.43									
78			4.93	98.05	98.42		.37									
79			5.10	97.88	98.39		.51									
80			4.80	98.18	98.36		.18									
81			4.65	98.38	98.33											
82			5.10	97.88	97.38	.50										
B.M.			4.30	98.68												
79+50	E. end		7.00	95.99												
	W. end		6.80	96.18												
82	1.85		99.73													
83			3.15	96.58	96.43	.15										
84			4.42	95.31	95.48		.17									
85			5.60	94.13	94.53		.40									
86			6.15	93.58	94.53		.95									
86+70	W. end		8.12	91.61												
	E. end		7.65	92.08												
87			6.02	93.71	94.53		.80									
B.M.			4.71	95.02												
88			4.50	95.23	95.28		.05									
89			3.35	96.38	95.98	.40										
90			2.70	97.03	96.69	.34										
91			2.48	97.28	97.39	.11										

Base of Concrete post on west side  
put in 10" pipe flows east

Put in 24" pipe 24" long flows west

Rock against Corner post SE. Cor.

STA.	B.S.	H.I.	F.S.	ELEV.	GRADE	CUT	FILL		STA.	B.S.	H.I.	F.S.	ELEV.	GRADE	CUT	FILL
92			2.15	97.58	98.10		.52									
92	8.70	106.28														
92+50	Sand		9.55	96.73												
	W end		9.65	96.63												
93			8.30	97.98	98.50		.82									
94			7.20	99.08	99.57		.43									
95			6.12	100.16	100.21		.05									
96			4.90	101.38	100.92	.46										
97			4.33	101.95	101.62	.33										
98			3.95	102.33	102.33											
99			3.90	102.38	102.77		.39									
100			3.40	102.88	103.22		.34									
100	7.35	110.23														
101			6.33	103.90	103.66	.24										
102			6.30	103.93	104.11		.18									
103			5.68	104.55	104.55											
104			4.90	105.33	105.00	.33										
105			4.73	105.50	105.00	.50										
106			4.90	105.33	105.00	.33										
107			5.80	104.43	105.00		.57									
107+85	E end		7.20	103.03												
	W end		6.95	103.28												
108			5.90	104.33	105.00		.67									
109			5.25	104.98	105.00		.02									

Put in 10" pipe flows south.

Put in 10" pipe flows east.



STA.	B.S.	H.I.	F.S.	ELEV.	GRADE	CUT	FILL		STA.	B.S.	H.I.	F.S.	ELEV.	GRADE	CUT	FILL
109	6.53	116.57														
110			5.90	105.61	105.64		.03									
111			5.30	106.21	106.28		.07									
112			4.60	106.91	106.91											
113			4.85	106.66	106.96		.30									
114			4.90	106.61	107.01		.40									
114+50	E end		5.90	105.61												
	W end		5.95	105.56												
115			4.68	106.83	107.06		.23									
116			3.80	107.71	107.11		.60									
117			3.43	108.08	107.16		.92									
118			3.43	108.08	107.21		.87									
119			4.30	107.21	107.26		.05									
119+87	W end		6.00	105.57												
	E end		5.40	106.11												
120+7			4.20	107.31	107.31											

Put in 10" pipe flows west

12" pipe now in place is to be equipped with headers.

Estimate

Cutting and filling	2800 yd	933.33
Shaping Grade	12107' per	242.14
Headers 16 yd concrete	\$800 per	281.20
Gravel	4065 yd @ 1.20	4065.00
Stone	1009 yd @ 1.40	1412.60
Hauling and spreading	5074 yd @ 1.45 per yd	7357.30
		<u>\$14291.57</u>

## Henry Clay et al

STA.	B.S.	H.I.	F.S.	ELEV.	GRADE	CUT	FILL
------	------	------	------	-------	-------	-----	------

Beginning at N 2 mi Sec 30  
Earnest Hicks et al Road  
Center of the North Salem  
Center line north and south  
up to this point having  
(that petition)

Thence east to a

Whence bears a beech  
beech S 10° W 53'

Thence east to

is an end post S 19.7'  
point, the corner was found  
over the N 2 mi Sec 30

15+38 which agreed  
that found by prolonging  
N NW 4 and stone at

Thence east to stone

Thence east to a point  
Cen N NE 4 Sec 29 Sta 66

Thence south to a point  
29 whence bears a Sugar  
S 75° W 103' (there being  
was restored by pro

## Road

STA.	B.S.	H.I.	F.S.	ELEV.	GRADE	CUT	FILL
------	------	------	------	-------	-------	-----	------

which is Sta 3+34 on the  
(the improvement from the  
and Ladoga Road along the  
through Sec 30, TP 17 N 2 W  
been provided for under

stone

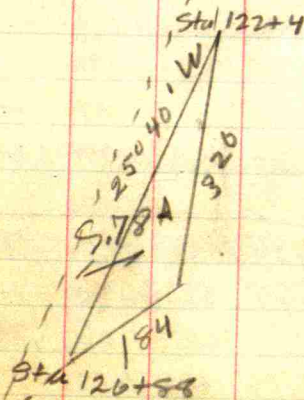
S 40° E 47' and another  
Sta 15+38

N E Cor Sec 30 whence  
(There being no stone at this  
by prolonging the line  
Sta 0 and the stone at  
within a few inches with  
the line over stone at Cen  
Cen N NE 4 Sec 29) Sta 26+45  
at Cen N NW 4 Sec 29 Sta 39+69  
15' east of the stone at  
+5

15' east of Cen E Cen Sec  
20 S 15° W 64' and W Hickory  
no stone here the point  
longing the line from the

STA.	B.S.	H.I.	F.S.	ELEV.	GRADE	CUT	FILL
point 15' east of the of a concrete bridge while the stone was							
Thence south to a pt Stone See 29 Sta 120+							
Thence (keeping the 50' Sta 120+92							
Thence deflecting to the Center of the Crowler Sta 130, this last corner of Joe Wickham's land at Sta 126+88 Cutting triangular piece of land and 184' respectively farther to westward							

STA.	B.S.	H.I.	F.S.	ELEV.	GRADE	CUT	FILL
52mi Stone over the center which was probably set existent) Sta 15' east of the 52mi 42							
bearings of See 29) South the right 250 40' to dsrville Free Gravel Road se Crossing the fence at Sta 122+4 and again off from his field a with sides 484', 320' which when extended 15' would amount to .78 A							



STA.	B.S.	H.I.	F.S.	ELEV.	GRADE	CUT	FILL
B.M.	7.60	107.60		100.00			
0			7.85	99.75	100.00		.25
0+20			8.40	99.20			
1			7.80	99.80	100.90		1.10
2			7.00	100.60	101.80		1.20
3			5.18	102.42	102.70		.28
4			2.50	105.10	103.60	1.50	
5			3.10	104.50	104.50		
6			3.42	104.18	104.89		.71
6	7.25	111.43					
7			7.32	104.11	105.27		1.16
8			6.35	105.08	105.66		.54
9			3.86	107.57	106.04	1.53	
10			4.95	106.48	106.43	.05	
11			6.05	105.38	106.81		1.43
11			6.85	104.58	107.20		
12			5.38	106.05	107.39		1.34
13			3.85	107.58	107.28		
14			2.20	109.23	107.59	1.64	
14	1.85	116.08					
15			2.75	108.33	107.60	.73	
16			3.45	107.63	107.63		
17			4.95	106.13	105.74	.39	
18			7.75	103.83	103.86		.53

Base Concrete post SE cor  
road intersection, which is also  
a B.M. on the Earnest Hicks et  
al Road, the datum plane being  
the same.

Sta 0 is Sta 3+34 on the  
Hicks Road.

0+20 is the outlet of a 10"  
pipe to be placed across the  
road N 30° W

Outlet for 10" pipe north.

STA.	B.S.	H.I.	F.S.	ELEV.	GRADE	CUT	FILL
BM		111.08	8.55	102.53			
19			9.10	101.98	101.98		
20			9.90	101.18	101.97		.79
20	6.75	107.93					
21			6.45	101.48	101.97		.49
22			6.00	101.93	101.96		.03
23			6.10	101.83	101.95		.12
24			5.00	102.93	101.95	.98	
25			3.75	104.18	101.94	2.24	
26			5.25	102.68	101.93	.75	
27			5.78	102.15	101.92	.23	
27	4.25	106.40					
28			5.20	101.20	101.91		.71
29			4.90	101.50	101.90		.40
30			4.38	102.02	101.89	.18	
31			4.90	101.50	101.88		.38
32			4.78	101.62	101.87		.25
33			4.95	101.45	101.87		.42
34			5.15	101.25	101.87		.62
34	7.10	108.35					
35			7.20	101.15	101.86		.71
36			7.45	100.90	101.86		.96
37			6.50	101.85	101.85		
38			4.70	103.65	102.55	1.10	

base concrete post south side of Road

Beginning at sta 19 and ending at sta 35+50 is a tiled public ditch on the north side of the road which has been only partially filled. From the side of the road at sta 19 it draws near the center of the road at Sta 26+45 and thence back to the side of the road at sta 35+50. The depth below the grade will average 3', the grade being rather high as a result of the excavation of the ditch. The ditch shall be filled and the grade shifted to the center as surveyed. Bidders should view this part of the road especially.

STA.	B.S.	H.I.	F.S.	ELEV.	GRADE	CUT	FILL
39		108.35	3.35	105.00	103.25	1.75	
BM			3.20	105.15			
40			5.10	103.25	103.25		
41			7.00	101.35	102.02		.67
41	1.60	102.75					
42			2.40	100.55	100.80		.25
43			4.00	98.95	99.58		.63
44			5.10	97.85	98.36		.51
45			5.60	97.35	97.14		.21
46			5.40	97.55	95.92	1.63	
47			6.50	96.45	94.70	1.75	
47	1.03	97.48					
48			4.45	93.03	93.48		.45
48 + 50 S. end			7.70	89.78			
		N. end	7.30	90.18			
49			4.90	92.58	93.48		.90
50			4.00	93.48	93.48		
50 + 50 S. end			5.70	91.78			
		N. end	5.70	91.78			
51			4.25	93.23	94.60		1.37
52			2.05	93.43	95.72		.29
53			6.20	97.73	96.84	.89	
54			5.30	98.63	97.96	.67	
55			4.90	99.03	99.08		.05

Point 4' below top of corner  
post N.E. Cur road intersection

30" boiler shell 17' long in place  
S 40° E. Lengthen and equip  
with headers. South

Put in 12" pipe South

STA.	B.S.	H.I.	F.S.	ELEV.	GRADE	CUT	FILL		STA.	B.S.	H.I.	F.S.	ELEV.	GRADE	CUT	FILL
56			3.67	100.26	100.20	.06										
57			2.60	101.33	101.33											
58			1.65	102.28	101.33	.95										
58	4.30	104.58														
59			5.45	101.13	101.33		.20									
60			5.50	101.08	101.33		.25									
61			5.60	101.58	101.33	.25										
62			4.70	101.88	101.33	.55										
63			5.65	100.93	100.13	.80										
64			6.60	99.98	98.93	1.05										
64	3.75	103.73														
65			6.00	97.73	97.73											
66			7.80	95.93	97.73		1.80									
BM			1.15	102.58												
BM	.25	102.93														
65+60	Mend		7.70	95.13												
	S. end		7.80	95.03												
66+95	W. end		9.13	93.70												
	E. end		9.45	93.88												
			6.60	96.23												
67			7.40	95.43	97.73		2.30									
68			3.35	99.48	98.19	1.29										
69			3.60	99.23	98.66	.57										
70			4.45	98.38	99.12		.74									

top of post between two  
gates north side of road.

1/2" pipe South

Intersecting road east.

STA.	B.S.	H.I.	F.S.	ELEV.	GRADE	CUT	FILL	STA.	B.S.	H.I.	F.S.	ELEV.	GRADE	CUT	FILL
71		102.83	4.40	98.43	99.58		1.15								
71	10.75	109.18													
72			9.13	100.05	100.05										
73			6.58	102.60	102.44	.16									
74			4.35	104.83	104.83										
75			2.70	106.48	104.83	1.65									
76			5.70	103.48	103.41	.07									
77			6.60	102.58	102.00	.58									
77	.77	103.35													
78			3.14	100.23	100.59		.36								
79			5.00	98.35	99.18		.83								
80			6.20	97.15	97.77		.62								
81			7.80	95.55	96.36		.81								
B.M.			3.15	100.20											
82			8.50	94.85	94.95		.10								
83			9.15	94.20	94.95		.75								
83	5.80	100.00													
83+90	W end		7.45	92.55											
	E end		7.20	92.80											
84			5.80	94.20	94.95		.75								
85			5.50	94.50	94.95		.45								
86			5.05	94.95	94.95										
87			6.10	93.90	94.00		.10								
88			6.95	93.05	93.05										

top south concrete gate post  
west side road.

10" pipe west.



STA.	B.S.	H.I.	F.S.	ELEV.	GRADE	CUT	FILL	STA.	B.S.	H.I.	F.S.	ELEV.	GRADE	CUT	FILL
89		100.00	6.85	93.15	91.55	1.60									
90			13.00	87.00	90.06		3.06								
90	6.90	93.90													
90+50	E end	9.70		84.20											
	W. end	10.10		83.80											
91			6.85	87.05	88.57		1.52								
92			2.30	91.60	87.08	4.52									
93			5.30	88.60	85.59	3.01									
94			9.80	84.10	84.10										
94	1.42	85.52													
95			2.80	82.72	79.75	2.97									
96			5.43	80.09	75.40	4.69									
97			11.50	74.02	71.04	2.98									
97	.26	74.28													
98			4.85	69.43	66.69	2.74									
99			9.90	64.38	62.33	2.05									
99	25	64.63													
100			6.65	57.98	57.98										
101			10.60	54.03	57.00		2.97								
B.M.			8.20	56.43											
102			11.60	53.03	57.00		3.97								
103			11.00	53.63	57.00		3.37								
104			4.20	60.43	57.00	3.43									
104	3.10	63.63													

West parapet concrete  
bridge.



STA.	B.S.	H.I.	F.S.	ELEV.	GRADE	CUT	FILL		STA.	B.S.	H.I.	F.S.	ELEV.	GRADE	CUT	FILL
121	2.25	38.75														
122			3.00	35.75	39.86		4.11									
123			3.00	35.75	39.50		3.75									
124			3.22	35.53	39.14		3.61									
125			4.10	34.65	38.79		4.14									
126			4.30	34.45	38.43		3.98									
127			5.50	33.25	38.07		4.82									
127+20	End		6.30	32.45												
128			6.45	32.30	37.72		5.42									
129			6.00	32.75	37.36		4.61									
130			3.50	35.25	37.00		1.75									

outlet - Put in 12" pipe

## Estimate Henry Clay

STA.	B.S.	H.I.	F.S.	ELEV.	GRADE	CUT	FILL
						7790 yd	
						3730 yd	
					13100 ft		
						45 yd	
						28 yd concrete	
						Culvert pipe	
						4353 yd gravel	
						1083 yd stone	
						Hauling 5436 yd	
						Spreading	

Cutting and filling 7790 yd  
 3730 yd  
 Shaping grade 13100 ft  
 Arch 106+40 45 yd  
 Headers 28 yd concrete  
 Culvert pipe  
 4353 yd gravel  
 1083 yd stone  
 Hauling 5436 yd  
 Spreading

## et al Road

STA.	B.S.	H.I.	F.S.	ELEV.	GRADE	CUT	FILL
							1947.50
						33 1/2 along creek	1243.30
					200 per 100'		260.00
					88.00 per yd		360.00
					7.50 per yd		210.00
							220.90
							4353.00
							1624.50
					1.25 per yd		6795.00
					.25 per yd		1339.00
							<u>19373.20</u>

256  
 33 1/2 along creek  
 200 per 100'  
 88.00 per yd  
 7.50 per yd  
 1.25 per yd  
 .25 per yd

2200  
 260  
 270  
 168  
 220  
 4353  
 1624  
 3436  
 1339  
15890

66  
4.6  
23.7  
20.3  
70.36

Martin Hart et al

STA.	B.S.	H.I.	F.S.	ELEV.	GRADE	CUT	FILL
------	------	------	------	-------	-------	-----	------

Beginning at a stone at  
R 2 E whence bears rock  
tree N 30 E .46 ch, which  
Brown and Lincoln Townships

Thence South to a stone

whence bears elm 16" diam  
14" diam N 40 W 40.5'

Thence South on same

Thence deflecting to the  
near a gate whence bears  
and the north gate post

Thence deflecting to the  
turn in fence whence bears  
and a stake north on the  
Sta 19 + 50.5

Thence deflecting to  
point at the center north  
Sta 23 + 52

Road Lincoln Twp

STA.	B.S.	H.I.	F.S.	ELEV.	GRADE	CUT	FILL
------	------	------	------	-------	-------	-----	------

Con E Cen Sec 6 TP 16 N  
S 45° E .25 ch and an elm  
point is on the line between

N 85° W 56' and an ash  
Sta 9 + 24

line to sta 16

left 19° 28' to a point  
the south gate post SW 13.9'  
SW 6.7' Sta 17 + 75

right 13° 55' to a point near  
the turn post SW 10' 10"  
fence line N W 8' 4"

the right 23° 5' to a  
end of iron bridge

$$\begin{array}{r} 60 \\ 23 \\ 23 \\ \hline 106 \end{array}$$

$$\begin{array}{r} 66 \\ 39 \\ \hline 105 \\ 198 \\ \hline 257 \end{array}$$

STA.	B.S.	H.I.	F.S.	ELEV.	GRADE	CUT	FILL

X Thence deflecting to the  
 Corners SE<sup>4</sup> Sec 6 whence  
 house S 45° E 73' and a  
 S 30° E 99' Sta 27+4  
 Thence west to Stone  
 Stone north

Thence west to a point  
 Range line at NE Cor  
 bears Corner post N 40° W  
 post S 45° E .33 ch

Thence jogging .12 ch to  
 north side of Sec 12 to  
 whence bears burr oak  
 a Sour oak 30" diam

Thence west to a stone  
 a mulberry 12" diam N 50°  
 18" diam N 85<sup>10</sup>° E 192.5'

Thence west to a stone  
 bears a B walnut 14" diam  
 oak 24" diam N 72° W

$$\begin{array}{r} 33 \\ 66 \\ \hline 99 \\ 198 \\ \hline 2178 \end{array}$$

STA.	B.S.	H.I.	F.S.	ELEV.	GRADE	CUT	FILL

Left 4° 20' to stone at  
 bears corner of brick school  
 Walnut tree near the well

S<sup>2</sup> mi Sec 6 whence bears  
 Sta 40+25

.12 ch north of Stone on  
 Sec 12 TP 16 N R 1 E whence  
 .39 ch and another corner  
 Sta 60+73

Southward west along the  
 Stone Cen N N E<sup>4</sup> Sec 12  
 30" diam N 30° W 60' and  
 N 50° W 78' Sta 74+19

N<sup>2</sup> mi Sec 12 whence bears  
 W 49' and a Sour oak  
 Sta 87+65

at NW Cor Sec 12 whence  
 N 30° W 57' and a burr  
 149' Sta 114+64.5

STA.	B.S.	H.I.	F.S.	ELEV.	GRADE	CUT	FILL
Thence deflecting to the							
bears a cedar 5" S 10° E							
22" diam N 60° E .66 ch							
Thence deflecting to the							
near Cen N W 4 Sec 11							
on north side of road							
having been lost and road							
usage)							
Thence west to stone							
a corner post N 16'							
Thence west in direction							
to center of the Lebanon							
Thence south along							
east edge of the sidewalk							
the south line of Franklin							
Thence east along a							
south line of Franklin							
St Sta 167 + 8.16							

STA.	B.S.	H.I.	F.S.	ELEV.	GRADE	CUT	FILL
left 6° 18' to a point whence							
.35 ch and a white hickory							
Sta 122 + 68							
right 10° 40' to a point							
15' south of end post							
Sta 127 + 86 (the corner							
and property lines fixed by							
usage)							
at N 2 mi Sec 11 whence bears							
Sta 141 + 28.5'							
of stone at Cen N W 4							
Road Sta 150 + 16							
a line 18' east of the							
to a point 17.5' north of							
St. Brownsburg Sta 164 + 24							
line 17.5' north of the							
St to the center of Adams							

STA.	B.S.	H.I.	F.S.	ELEV.	GRADE	CUT	FILL
Thence South along to the R <sup>t</sup> of way of T.H.I.							
Thence Joggling westward the T.H.I. + E.T. Co to the north end of							
Thence Southward St to a point opposite Brownsburg Milling Co's							
Thence Southward in at South end of Mill St Sta 181 + 25.5' + 15.5'							
Thence Southward along of center of alley between and Green's Addition ville Road Sta 183 + 74							
The right of way from is 30', From 150 + 16 width of the Brownsburg							

STA.	B.S.	H.I.	F.S.	ELEV.	GRADE	CUT	FILL
the center of Adams St + E.T. Co Sta 174 + 25 <sup>31.6</sup>							
across the rights of way of and of the Big 4 Ry Co Mill St Sta 175 + 24 <sup>30.6</sup>							
along the center of Mill the north line of the land Sta 178 + 28							
the direction of a point 7' east of center thereof							
a line - which is Parker and Harris Addition to the center of Crawfords							
beginning to Sta 150 + 16 to 164 + 20 is the established and Lebanon Road,							



STA.	B.S.	H.I.	F.S.	ELEV.	GRADE	CUT	FILL
------	------	------	------	-------	-------	-----	------

From 164+20 to  
167+76 to 174+25  
Adams St, from  
the road is 30',  
on each side from the

STA.	B.S.	H.I.	F.S.	ELEV.	GRADE	CUT	FILL
------	------	------	------	-------	-------	-----	------

167+76 is 35', From  
is the established width of  
174+25 to the end of  
all extending equally distant  
from the line described above.

STA.	B.S.	H.I.	F.S.	ELEV.	GRADE	CUT	FILL	STA.	B.S.	H.I.	F.S.	ELEV.	GRADE	CUT	FILL
0	3.40	103.40		100.00	100.00										
1			4.20	99.20	100.46		1.26								
2			4.80	98.60	100.93		2.33								
2+5	W.		6.30	97.10											
	E		6.25	97.15											
3			3.85	99.55	101.39		1.84								
4			2.14	101.26	101.86		.60								
4	8.05	109.31													
B.M.			1.75	107.56											
5			6.85	102.46	102.32	.14									
6			5.95	103.36	102.79	.57									
7			5.03	104.28	103.25	1.03									
8			6.06	103.25	103.25										
9			7.70	101.61	102.26		.65								
10			8.55	100.76	101.27		.51								
10	1.60	102.36													
11			1.65	100.71	100.27	.44									
12			2.23	100.13	99.28	.85									
13			5.06	97.30	98.28		.98								
13+40	W		6.75	95.61											
	E		6.53	96.83											
14			4.88	97.48	97.29	.19									
15			5.48	96.88	96.29	.39									
16			5.90	96.46	95.30	1.16									

Drain 10 A level land west  
" pipe 24' long

top of north gate post on east  
side of road between Sta 4 + 5.

Drains 4 A level land west

STA.	B.S.	H.I.	F.S.	ELEV.	GRADE	CUT	FILL	STA.	B.S.	H.I.	F.S.	ELEV.	GRADE	CUT	FILL
16	2.30	98.76													
17			3.10	95.66	94.30	1.36									
18			5.45	93.31	93.31										
19			8.73	90.03	89.96	.07									
0			9.63	89.13											
0	1.38	90.57													
20			5.76	84.75	86.61		1.86								
21			8.00	82.51	86.61		4.10								
22			7.90	82.61	86.61		4.00								
23			6.10	84.41	86.61		2.20								
B.M.			3.90	86.61											
B.M.	10.84	97.45													
24			10.00	87.45	86.61	.84									
25			.99	96.46	90.07	6.39									
25	6.28	102.74													
26			3.18	99.56	93.53	6.03									
27			5.05	97.69	98.00	.69									
28			4.75	97.99	97.75	.24									
29			4.90	97.84	98.50	.66									
30			3.90	98.84	98.25	.41									
30	7.60	106.44													
31			6.75	99.69	100.00	.31									
32			5.90	100.54	100.75	.21									
33			4.95	101.49	101.49										

floor of iron bridge Sta 23+80

STA.	B.S.	H.I.	F.S.	ELEV.	GRADE	CUT	FILL	STA.	B.S.	H.I.	F.S.	ELEV.	GRADE	CUT	FILL
B.M.		106.44	- .05	106.49											
34			4.63	101.81	101.49	.32									
35			5.03	101.41	101.49		.08								
36			5.35	101.09	101.49		.40								
37			5.30	101.14	101.49		.35								
37	4.65	105.79													
38			4.70	101.09	101.49		.40								
39			4.75	101.04	101.49		.45								
40			4.32	101.47	101.49		.02								
41			4.27	101.52	101.49	.03									
42			4.55	101.24	101.49		.25								
43			4.60	101.19	101.49		.30								
43	6.08	107.27													
43+30 ft			9.20	98.07											
44			6.00	101.27	101.49		.22								
45			5.10	102.17	101.93	.24									
46			4.87	102.40	102.37	.03									
47			4.66	102.61	102.81		.20								
48			3.50	103.77	103.25	.52									
49			3.35	103.92	103.69	.23									
50			3.00	104.27	103.69	.58									
50	4.20	108.47													
51			4.55	103.92	103.69	.23									
52			5.05	103.42	103.69	.27									

top corner post N.W. corner Martin  
Harts Orchard.

drains 20 A flat land north  
over tile ditch pipe 24" long

STA.	B.S.	H.I.	F.S.	ELEV.	GRADE	CUT	FILL	STA.	B.S.	H.I.	F.S.	ELEV.	GRADE	CUT	FILL
BM			.04	109.43				top							
53			4.78	103.69	103.69			Corner post							
54			4.15	104.32	104.38		.06	Pat							
55			3.80	104.67	105.08		.41	Hurts							
55	8.20	112.87						barn							
56			7.45	105.42	105.77		.35	lot.							
57			6.10	106.77	106.47	.30									
58			4.82	108.05	107.16	.89									
59			4.88	107.99	107.86	.13									
60			4.32	108.53	108.53										
61			4.25	108.62	108.55	.07									
62			3.95	108.92	108.55	.37									
62	4.95	113.87													
63			4.90	108.97	108.55	.42									
64			4.55	109.32	108.55	.77									
65			4.58	109.29	108.55	.74									
66			4.45	109.42	108.55	.87									
67			5.20	108.67	108.55	.12									
68			5.90	107.97	108.55	.58									
69			5.75	108.12	108.55	.43									
69	5.23	113.35													
70			5.25	108.10	108.55	.45									
71			5.10	108.25	108.55	.30									
BM			.65	112.70				top east yard gate post							
								Conway's							

STA.	B.S.	H.I.	F.S.	ELEV.	GRADE	CUT	FILL	STA.	B.S.	H.I.	F.S.	ELEV.	GRADE	CUT	FILL
72			5.61	107.74	108.53		.81								
73			6.15	107.20	108.53		1.35								
73 + 10 S			9.80	103.53											
A			9.50	103.85											
74			5.55	107.80	108.53		.75								
75			5.40	107.95	108.53		.60								
75	5.90	113.85													
76			5.04	108.81	108.53		.26								
BM			.20	113.65											
77			4.50	109.35	108.53		.80								
78			5.80	108.05	108.19		.14								
79			6.20	107.65	107.82		.17								
79	2.85	110.50													
80			3.45	107.05	107.46		.41								
81			3.75	106.75	107.09		.34								
82			4.15	106.35	106.73		.38								
83			4.28	106.22	106.36		.14								
84			4.50	106.00	106.00										
85			4.40	106.10	106.00		.10								
86			4.50	106.00	106.00										
87			4.87	105.63	106.00		.37								
87	4.43	110.06													
88			4.70	105.36	106.00		.64								
89			4.58	105.48	106.00		.52								

24" pipe 24' long south

Post S E cor Canary's garden

STA.	B.S.	H.I.	F.S.	ELEV.	GRADE	CUT	FILL	STA.	B.S.	H.I.	F.S.	ELEV.	GRADE	CUT	FILL
90			4.40	105.66	106.00		.34								
B.M.			282	105.24											
91			4.50	105.56	106.00		.44								
92			4.50	105.56	106.00		.44								
93			4.15	105.91	106.00		.09								
94			3.20	106.86	106.00		.86								
94	3.57	110.36													
95			4.15	106.21	106.00		.21								
96			4.50	105.86	106.00		.14								
96+40 S			6.00	104.36											
97			4.50	105.86	106.00		.14								
98			4.95	105.41	106.00		.59								
99			4.90	105.46	106.00		.54								
100			5.00	105.36	106.00		.64								
101			4.60	105.76	106.00		.24								
102			4.55	105.81	106.00		.19								
102	5.85	111.66													
103			5.60	106.06	106.00		.06								
104			5.35	106.31	106.07		.24								
105			4.60	107.06	106.15		.91								
106			5.05	106.61	106.23		.38								
107			5.10	106.56	106.30		.26								
108			5.10	106.56	106.38		.18								
109			4.85	106.81	106.46		.35								

A parapet of brick arch

12" pipe 24' long South.

STA.	B.S.	H.I.	F.S.	ELEV.	GRADE	CUT	FILL
109	4.70	111.51					
110			4.45	107.06	106.53		.53
111			4.65	106.86	106.61		.25
112			4.88	106.63	106.69		1.06
113			5.00	106.57	106.76		.25
114			5.00	106.57	106.84		.33
B.M.			.65	110.86			
115			4.80	106.71	106.92		.21
115	4.80	111.51					
116			4.95	106.56	106.99		.43
116 + 50 N			6.45	105.06			
S			6.65	104.86			
117			4.90	106.61	107.07		.46
118			4.53	106.98	107.15		.17
119			4.10	107.41	107.22		.19
120			4.45	107.06	107.30		.24
121			4.05	107.46	107.38		.08
121	4.45	111.91					
122			4.10	107.81	107.45		.36
123			4.05	107.86	107.53		.33
124			4.30	107.61	107.61		
125			4.95	106.96	107.68		.72
126			5.00	106.91	107.76		.85
127			5.15	106.76	107.84		1.08

STA.	B.S.	H.I.	F.S.	ELEV.	GRADE	CUT	FILL
------	------	------	------	-------	-------	-----	------

top of corner post north of  
corner stone.

20A level land drains south



STA.	B.S.	H.I.	F.S.	ELEV.	GRADE	CUT	FILL	STA.	B.S.	H.I.	F.S.	ELEV.	GRADE	CUT	FILL
127	7.00	113.76													
128			7.05	106.71	107.91		1.20								
129			6.85	106.91	107.99		1.08								
130			6.55	107.21	108.07		.86								
131			5.35	108.41	108.14	.27									
BM			1.16	112.60											
132			5.80	107.96	108.22		.26								
133			6.00	107.76	108.30		.54								
134			5.30	108.46	108.38	.08									
134	3.00	111.46													
135			3.00	108.46	108.46										
136			3.90	107.56	107.59		.03								
137			4.30	107.16	106.71	.45									
138			5.15	106.31	105.84	.47									
139			7.20	104.26	104.97		.71								
140			8.43	103.03	104.09		1.06								
140	4.00	107.03													
141			4.30	102.73	103.22		.49								
142			4.70	102.33	102.35		.02								
143			4.80	102.23	101.47	.76									
144			5.72	101.31	100.60	.71									
145			7.30	99.73	99.73										
146			9.40	97.63	98.15		.52								
146	2.20	99.83													

top west gate post  
barn lot  
Tharps

STA.	B.S.	H.I.	F.S.	ELEV.	GRADE	CUT	FILL
147		9983	4.87	94.96	96.57		1.61
148			5.30	94.53	94.99		.46
149			6.18	93.65	93.41	.24	
150			7.00	92.83	91.83	1.00	
BM			7.63	92.20			
BM	1.40	93.60			-		
150+16			1.60	92.00			
151			3.73	89.87	90.25		.38
152			4.52	89.08	90.25		1.17
153			4.30	89.30	90.25		.95
154			.77	92.83	92.86		.03
154	9.64	102.69		93.05			
155			6.57	96.12	95.47	.65	
156			4.89	97.80	97.40	.40	
157			3.60	99.09	99.34		.25
158			2.55	100.14	99.34	.80	
159			2.45	100.24	99.34	.90	
159	3.40	103.74		100.34			
160			4.28	99.46	99.34	.12	
161			4.28	99.46	99.34	.12	
162			4.28	99.46	99.34	.12	
163			4.05	99.69	99.89		.20
164			2.80	100.94	100.44	.50	
165			2.35	101.39	100.98	.59	

STA.	B.S.	H.I.	F.S.	ELEV.	GRADE	CUT	FILL

At end Concrete walk entrance  
to cemetery.  
turn South Walk W side

STA.	B.S.	H.I.	F.S.	ELEV.	GRADE	CUT	FILL
166			2.55	101.19	101.53		.34
166	6.50	107.69					
167			5.95	101.74	102.08		.34
167+76			5.00	102.69			
BM			4.40	103.29			
168			4.92	102.77	102.62	.15	
169			4.10	103.59	103.17	.42	
170			4.90	102.79	102.50	.29	
170	3.70	106.54		102.84			
171			3.90	102.64	101.84	.80	
172			4.51	102.03	101.18	.85	
173			5.30	101.24	101.18	.06	
174			5.80	100.74	101.18		.44
174	4.77	105.81		101.04			
Traction rail			3.83	101.98			
175				101.93	101.93		
Big H rail			3.93	101.88			
176			5.00	102.81	101.18		.37
177			3.92	102.89	101.18	.71	
178			3.62	102.19	101.18	1.01	
179			4.13	101.68	100.29	1.39	
179	3.31	104.99					
180			4.45	101.54	99.40	1.14	

STA.	B.S.	H.I.	F.S.	ELEV.	GRADE	CUT	FILL
Tarn South							
At end west walk							FS Elev
West walk							West walk
			4.35	103.84			4.56 103.13
			3.66	104.03			3.87 103.82
			4.55	103.14			4.85 102.84
			4.05	102.49			3.95 102.79
			4.63	101.91			4.55 101.99
			4.90	101.64			5.20 101.34
			5.30	101.24			5.50 101.04

STA.	B.S.	H.I.	F.S.	ELEV.	GRADE	OUT	FILL
BM			4.28	100.71			
181			5.10	99.59	98.51	1.38	
182			5.85	99.14	97.62	1.52	
183			7.03	97.96	96.73	1.23	
Crossing			8.20	96.79	96.04	.75	

## Estimate

Cutting	45	30	yd				
Metal culverts							
Headers		12	yd				
Shaping and rolling grade							
Curbs	48	18	lin ft				
4" drain tile	67	16'					
Hauling and handling trenches							
364 yd coarse gravel							
Mesh reinforcement							
Expansion joints							
Concrete in Roadway							
Stone	87	87	yd <sup>2</sup>				
Dust	21	97	yd <sup>2</sup> s				
Hauling and Spreading							
Rolling and Watering							

STA.	B.S.	H.I.	F.S.	ELEV.	GRADE	OUT	FILL
------	------	------	------	-------	-------	-----	------

floor of Mill Scales.

Sidewalk North side Main St.

filling	39	5	0	.33	$\frac{1}{3}$	1	510.00
							100.80
							84.00
	183	74			\$2.50		459.35
							1390.00
							94.02
							16.00
							72.00
							637.00
							85.00
							42.50
							1200.00
							12301.80
							3075.80
							8238.00
							1531.17
							<u>30,817.44</u>

## Jacob Page et al

## Road

STA.	B.S.	H.I.	F.S.	ELEV.	GRADE	CUT	FILL
1							
1							
1							
1							
1							
1							
1							
1							
1							
1							
1							
1							
1							
1							
1							
1							
1							
1							

Beginning at crossing of  
Road and west line E 2

Thence south to stone  
Rock under north brace

" " east " "  
Sta 43+4

Thence west to point  
Sec 5 Sta 49+64

Thence south to point  
Cen Sec 8 on right line  
Stone at Cen E Cen Sec

Thence west to stone  
and on to stone at  
121+47

Thence west to W 2 mi

STA.	B.S.	H.I.	F.S.	ELEV.	GRADE	CUT	FILL

North Salem and Road date  
N E 4 Sec 5 Tp 16 N R 2 W

Cen S E 4 whence bears

N W cor 1240° W .41 ch

S E cor E .32 ch

5' east Cen S 8 W 4 S E 4

665' east of stone at  
with said stone and  
7 Sta 75+4

Cen Sec 8 Sta 81+69  
Cen E Cen Sec 7 Sta

Sec 7 Stone Sta 153+29

204  
122  
3980

1212  
516  
3978

STA.	B.S.	H.I.	F.S.	ELEV.	GRADE	CUT	FILL	STA.	B.S.	H.I.	F.S.	ELEV.	GRADE	CUT	FILL
1	BM	-.60	99.40												
1	0			100.00											
1	0+15	E		4.60	94.80	94.80									
1		W		6.80	92.60										
1				5.90	93.50										
1	1			4.75	94.65	94.74		.09							
1	2			4.60	94.80	94.68	.12								
1	3			4.45	94.95	94.62	.33								
1	4			4.60	94.80	94.56	.24								
1	5			4.90	94.50	94.50									
1	6			5.60	93.80	93.70	.10								
1	7			6.50	92.90	92.90									
1	8			8.10	91.30	91.19	.11								
1	8	.00	91.30												
1	9			2.03	89.27	89.47		.20							
1	10			3.41	87.89	87.75	.14								
1	11			5.06	86.24	86.03	.21								
1	12			6.85	84.45	84.31	.14								
1	13			7.65	83.65	82.59	1.06								
1	14			7.75	83.55	80.87	2.68								
1	15			10.66	80.64	79.15	1.49								
1	15	-.25	80.39												
1	16			2.75	77.64	77.43	.21								
1	17			5.00	75.39	75.71	.32								
1	18			6.40	73.99	73.99									

top of end post northend of  
road on north side of  
Roachdale Road.

12" pipe 24' long

W N E

S

STA.	B.S.	H.I.	F.S.	ELEV.	GRADE	CUT	FILL	STA.	B.S.	H.I.	F.S.	ELEV.	GRADE	CUT	FILL
19		80.39	7.10	73.29	73.31		.02								
20			7.60	72.79	72.62	.17									
BM			6.20	74.19											
BM	1.25	75.44													
21			3.90	71.54	71.93		.39								
22			4.20	71.24	71.24										
23			4.85	70.59	70.70		.11								
24			5.55	69.89	70.16		.27								
25			6.25	69.19	69.62		.43								
26			6.60	68.84	69.18		.24								
26	3.50	72.34													
27			4.35	67.99	68.54		.55								
28			4.60	67.74	68.00		.26								
29			5.05	67.29	68.00		.71								
29	40 W		6.93	65.41											
BM	E		7.11	65.23											
30			.85	71.49											
31			4.80	67.54	68.00		.46								
32			2.15	70.19	69.50	.69									
32			1.35	70.99	71.00		.01								
32	9.35	80.34													
33			8.35	71.99	72.50		.51								
34			6.14	72.20	74.00		1.80								
35			3.45	76.89	75.50	1.39									

Rail CH and D Ry

30" pipe 24' long  
top north gate post Ergenbrights





STA.	B.S.	H.I.	F.S.	ELEV.	GRADE	CUT	FILL	STA.	B.S.	H.I.	F.S.	ELEV.	GRADE	CUT	FILL
		81.29													
57+90	E		1390	65.39											
	W		1650	64.79											
52			13.10	68.19	70.00		1.81								
53			9.10	72.19	72.35		.16								
54			6.00	75.29	74.70		.59								
55			2.55	78.74	77.05		1.69								
56			1.90	79.39	79.39										
57			1.40	79.89	79.84		.05								
58			1.00	80.29	80.29										
58	1.40	81.69													
59			3.05	78.64	78.56		.22								
60			4.98	76.71	77.44		.73								
61			6.05	75.64	76.01		.37								
62			7.80	73.89	74.59		.70								
62+25 W			10.00	71.69											
	E		9.80	71.89											
63			7.10	74.59	74.59										
64			5.40	76.29	76.61		.32								
64	10.03	82.32													
65			7.62	78.70	78.64		.06								
66			5.55	80.77	80.66		.11								
67			3.63	82.69	82.69										
68			3.02	83.30	83.30										

12" pipe 24' long west

STA.	B.S.	H.I.	F.S.	ELEV.	GRADE	CUT	FILL	STA.	B.S.	H.I.	F.S.	ELEV.	GRADE	CUT	FILL
69			3.02	83.30	83.14	.16									
70			2.42	83.90	82.97	.93									
71			1.62	84.70	82.81	1.89									
71	3.10	87.80													
72			5.72	82.68	82.64	.04									
73			5.85	81.95	82.48		.53								
74			3.46	84.34	82.3	2.03									
75			5.65	82.15	82.15										
76			8.30	79.50	81.52		2.02								
76	5.80	85.30													
BM			7.20	78.10											
77			5.90	79.40	80.90		1.50								
78			5.15	80.15	80.28		.13								
79			3.65	81.65	79.66	1.99									
80			4.10	81.20	79.04	2.16									
81			5.80	79.50	78.4	2.10									
82			7.50	77.80	77.80										
82	-1.10	77.70													
83			.92	76.78	73.1	23.66									
83			7.16	70.54	68.44	2.10									
84			14.00	63.70	63.76		.06								
84			12.10	65.60											
85	.25	65.85													
85			5.90	59.95	59.08	.87									

Next Page gate

top cor post SE corner

two stakes marked 83

STA.	B.S.	H.I.	F.S.	ELEV.	GRADE	CUT	FILL	STA.	B.S.	H.I.	F.S.	ELEV.	GRADE	CUT	FILL
86		65.85	8.80	57.05	54.40	2.65									
0			12.40	53.45											
0	.15	33.60													
87			.60	53.00	49.72	3.28									
88			8.40	45.20	45.04	.16									
89			12.40	41.20	40.36	.84									
89	1.05	42.25													
90			9.06	33.19	35.68		2.49								
90	.03	33.22													
91			5.36	27.86	31.00		3.14								
92			5.05	28.17	31.00		2.83								
91+93	14		9.90	23.32											
	S		9.60	23.62											
BM			1.40	31.82											
93			8.90	29.32	35.00		5.68								
0			.05	33.17											
0	1.245	45.62													
94			5.25	40.37	39.00	1.37									
95			.90	44.72	39.00	5.72									
96			2.60	43.02	39.00	4.02									
97			6.30	39.32	39.00	.32									
98			11.60	34.02	35.33		1.31								
BM			11.10	34.52											
99			16.90	28.72	31.66		2.94								

Drains 800A rolling land south  
Arch 10' span 7' waterway  
top concrete post north side

top parapet Est River bridge

STA.	B.S.	H.I.	F.S.	ELEV.	GRADE	CUT	FILL
99	1.25	29.97					
100			9.96	20.01	28.00		7.99
101			12.80	17.17	28.00		10.83
101	5.10	22.27					
102			5.45	16.82	28.00		11.18
103			5.60	16.67	28.00		11.33
104			5.00	17.27	28.00		10.73
105			1.36	20.91	28.00		7.09
105	11.53	32.44					
106			1.21	31.23	31.76		.53
106	11.85	43.08					
107			.18	42.90	35.52		7.38
107	10.85	53.75					
108			6.11	47.64	39.28		8.36
B.M.			2.40	57.35			
109			4.55	49.20	43.04		6.16
110			4.70	49.05	46.80		2.25
111			3.20	50.55	50.55		—
112			1.90	51.85	57.42		.43
113			.50	53.25	52.29		.96
113	9.20	62.45					
114			8.35	54.10	53.16		.94
115			8.85	53.60	54.03		
116			7.55	54.90	54.90		—

STA.	B.S.	H.I.	F.S.	ELEV.	GRADE	CUT	FILL

edge school house porch.

STA.	B.S.	H.I.	F.S.	ELEV.	GRADE	CUT	FILL	STA.	B.S.	H.I.	F.S.	ELEV.	GRADE	CUT	FILL
9	117		62.45	65.5	53.90	54.90	1.00								
	118			4.85	57.60	54.90	2.70								
	119			4.65	57.80	54.90	2.90								
	⊙			12.05	50.40										
	⊙	2.72	53.12												
	120			7.70	45.42	54.90									
	121			4.95	48.17	54.90									
	121+40 h			5.00	48.12										
	B.M.	S		5.67	47.45										
	⊙			5.45	47.67										
	⊙	13.20	65.82	.50	52.62										
	122			6.05	59.77	59.20	.57								
	123			-5.00	70.82	63.50	7.32								
	124			-.35	66.17	67.80									
	125			2.00	63.82	72.10									
	124+90 h			6.90	58.92										
	⊙	S		4.90	60.92										
	⊙			00	65.82										
	⊙	15.70	81.52												
	⊙			.96	80.56										
	⊙	9.80	90.36												
	126			6.76	83.60	76.40	7.20								
	127			5.00	85.36	80.70	4.66								

4" concrete pipe

top north header of culvert  
down stream

18" pipe north

STA.	B.S.	H.I.	F.S.	ELEV.	GRADE	CUT	FILL
128			2.62	87.74	85.00	2.74	
129			1.48	88.88	85.58	3.30	
130			4.65	85.71	86.16		.45
131			8.04	82.32	86.74		4.42
131	5.55	87.87					
131	N		9.40	78.47			
	S		7.40	80.47			
132			3.60	84.27	87.31		3.04
133			1.45	86.42	87.89		1.47
133	8.00	94.42					
134			6.20	88.22	88.47		.25
BM			1.05	93.37			
135			5.56	88.86	89.05		.19
136			4.80	89.62	89.62		
137			4.95	89.47	89.67		.20
138			4.45	89.97	89.72		.15
139			3.72	90.70	89.77		.93
140			4.08	90.34	89.82		.52
140	4.20	94.54					
141			4.40	90.14	89.87		.27
142			4.40	90.14	89.92		.22
143			4.66	89.88	89.97		.09
144			4.52	90.02	90.02		
145			5.60	88.94	86.01		2.93

STA.	B.S.	H.I.	F.S.	ELEV.	GRADE	CUT	FILL

15" pipe 24' long north.

top Mahoney's east gate  
post S side of road.

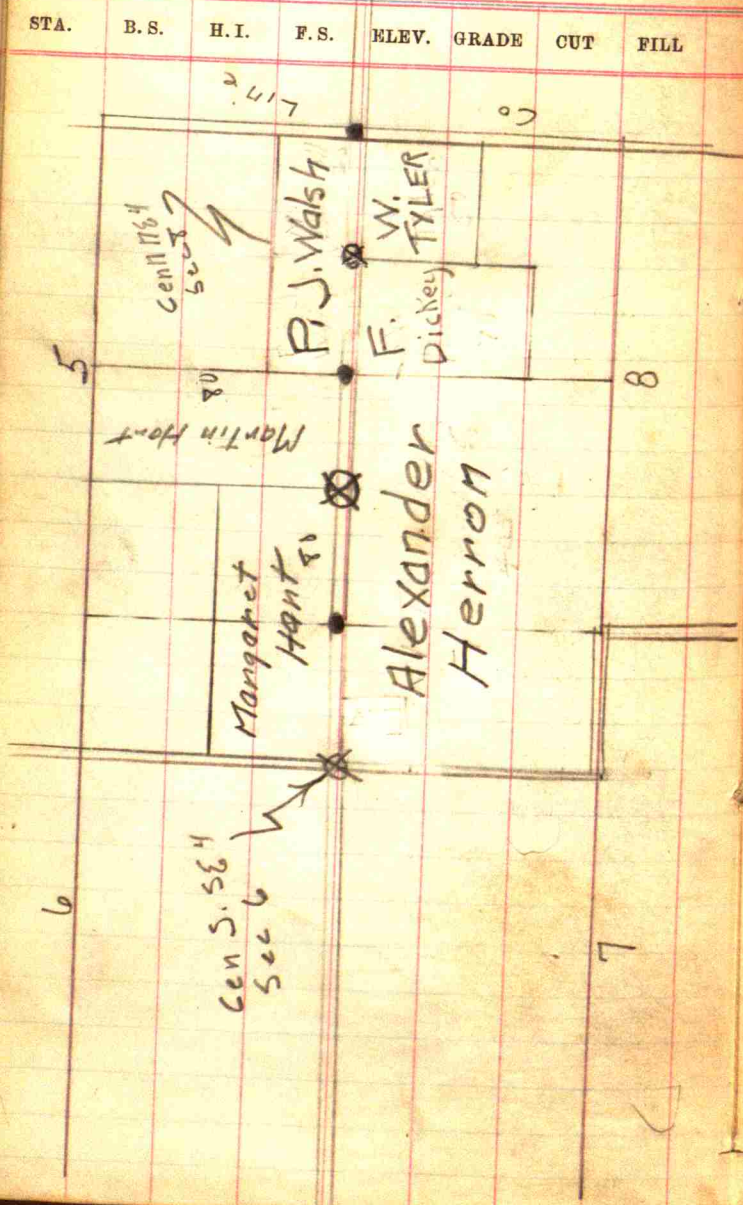
STA.	B.S.	H.I.	F.S.	ELEV.	GRADE	CUT	FILL
①		94.54	1180	82.74			
①	5.40	88.14					
146			7.40	80.74	82.00		1.26
147			9.80	78.34	82.00		3.66
147 S			12.25	75.89			
148			11.87	76.27			
①			4.70	83.44	82.00	1.44	
①	7.83	95.32	.65	87.49			
149			6.36	88.96	86.13	2.83	
150			5.05	90.27	90.27		
151			4.85	90.47	90.23	.24	
152			5.10	90.22	90.19	.03	
153			5.30	90.02	90.15		.13
153+29			5.18	90.14	90.14		
BM			.20	95.12			

STA.	B.S.	H.I.	F.S.	ELEV.	GRADE	CUT	FILL
Drains 100 A flat land south 20" pipe now in place Put in 4' arch culvert.							
end of Road on County line top Galbroth's east gate post							

STA.	B.S.	H.I.	F.S.	ELEV.	GRADE	CUT	FILL	STA.	B.S.	H.I.	F.S.	ELEV.	GRADE	CUT	FILL
								20x						2000 00	
														1250 00	
								1.00 per 1.00						154.29	
														216.00	
														450.00	
														425.00	
								33 $\frac{1}{3}$ e						2007.66	
								50 e						3011.50	
														<del>9514.45</del>	



Stones  
500  
50  
H. E. Sec 6



3.42  
29  
80  
451  
40  
4.91  
29  
44  
69  
37451  
3.42  
.29

STA.	B.S.	H.I.	F.S.	ELEV.	GRADE	CUT	FILL
------	------	------	------	-------	-------	-----	------

3.42	4.24						
3.71	3.42						
4.24	92						
3.91	40						
4) 15.28	1.22						
3.82							

3.91	26						
3.42	85						
49	1.11						
27	69						
76	1.22						

27	2) 1.91						
76	.95						
2) 103	25						
51	.70						
23	85						
26	1.55						

66  
46  
396  
264  
30.36

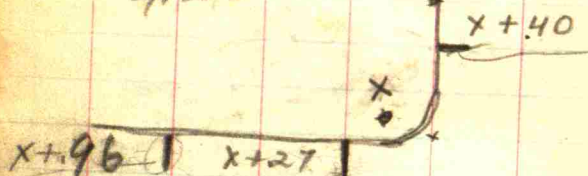
152

$$\begin{array}{r} 3.85 \\ 3.41 \\ \hline 44 \end{array}$$

$$\begin{array}{r} 44 \\ 27 \\ \hline 71 \end{array}$$

STA.	B.S.	H.I.	F.S.	ELEV.	GRADE	CUT	FILL
------	------	------	------	-------	-------	-----	------

$$X = 3.41$$

$$\begin{array}{r} 3.41 \\ - 80 \\ \hline 4.21 \end{array}$$


$$\begin{array}{r} 84 \\ 172 \\ \hline 2) 2.56 \\ 128 \end{array}$$

$$\begin{array}{r} 112 \\ 27 \\ \hline 42 \\ 71 \\ \hline 23 \\ 46 \end{array}$$

$$\begin{array}{r} 1.15 \\ 27 \\ \hline .88 \end{array}$$

$$x+1.31$$

$$x+1.15$$

$$\begin{array}{r} 115 \\ 27 \\ \hline 88 \end{array}$$


$$x+1.28$$

$$\begin{array}{r} 4.21 \\ 1.28 \\ \hline 5.49 \end{array}$$

4.21

153

STA.	B.S.	H.I.	F.S.	ELEV.	GRADE	CUT	FILL
------	------	------	------	-------	-------	-----	------

$$x+31$$

$$x+44$$

$$x+84$$

$$x+1.49$$

$$x+1.28$$

$$x+1.72$$

$$x+1.84$$

$$x+1.32$$

$$x+1.39$$



Hart Road

STA.	B.S.	H.I.	F.S.	ELEV.	GRADE	CUT	FILL
	W.S.	E.S.					
183+38.5	96.90	96.72					
183+0	98.60	98.05					
182+0	99.05	99.26					
181+0	99.65	100.40					
180+0	100.11	100.99					
179+0	100.60	101.92					
178+0	101.15	102.42					
177+0	101.66	102.31					
176+0	101.33	101.48					
175+30.6	101.17						

B.M. S.W. con. Cement Platform for Scales

E. End Cement Wk. 102.30 RR. Track

S. Side

164+92	101.0						
165+0	101.44						
166+0	101.45						
167+0	102.09						
167+60	103.29						

Cement walk on E side Lebanon Road at S. Boundary Line of Franklin St.

N end W. Walk. Adams Street

STA.	B.S.	H.I.	F.S.	ELEV.	GRADE	CUT	FILL
					66		
					35		
				330	396		
				198	396		
				23.10	43.56		

STA.	B.S.	H.I.	F.S.	ELEV.	GRADE	CUT	FILL
115	1140	50.20		38.20			
114			9.60	40.60			
113			2.50	47.70			
113	1200	59.70					
112			14.05	58.30			
112	1160	69.90					
111			5.20	64.70			
110			2.60	67.30			

$$\begin{array}{r}
 183 + 74 \\
 181 + 25.5 \\
 \hline
 248.5
 \end{array}$$

$$\begin{array}{r}
 181 + 25.5 \\
 178 + 28.0 \\
 \hline
 297.5
 \end{array}$$

$$\begin{array}{r}
 4.07 \\
 73 \\
 80 \\
 \hline
 5.60
 \end{array}$$

$$\begin{array}{r}
 4.07 \\
 40 \\
 80 \\
 \hline
 5.27 \\
 4.72
 \end{array}$$

$$\begin{array}{r}
 4.07 \\
 87 \\
 80 \\
 \hline
 5.74
 \end{array}$$

$$\begin{array}{r}
 384 \\
 27 \\
 \hline
 4.11 \\
 80 \\
 \hline
 4.91
 \end{array}$$

$$\begin{array}{r}
 361 \\
 4.413 \\
 \hline
 4.27
 \end{array}$$

$$\begin{array}{r}
 66 \\
 12 \\
 \hline
 132 \\
 66 \\
 \hline
 7.92 \\
 66 \\
 .39
 \end{array}$$

$$\begin{array}{r}
 594 \\
 198 \\
 \hline
 25.74
 \end{array}$$

$$\begin{array}{r}
 66 \\
 33 \\
 \hline
 198 \\
 198
 \end{array}$$

$$\begin{array}{r}
 2178
 \end{array}$$