

← A4 →

← LETTER →

1916

20

Davis Road.

D-1

RAMSEY BRIDGE  
GROSS BRIDGE  
GUTHRIE BRIDGE  
MARTIN BRIDGE  
D.M. JONES DITCH  
HECTOR GILCHRIST, RETAINING WALL

CHICAGO

TAMM

DISTANCE

0	1
1	1
2	1
3	1
4	1
5	1
6	1
7	1
8	1
9	1
10	1
11	2
12	2
13	2
14	2
15	2
16	2
17	2
18	2
19	2
20	2
21	3
22	3
23	3
24	3
25	3
26	3
27	3
28	3
29	3
30	3
31	4
32	4
33	4
34	4
35	4
36	4

Davis Road  
Liberty Township

Apr 13 1916

CHIC  
T  
DIST.

0  
1  
2  
3  
4  
5  
6  
7  
8  
9  
10  
11  
12  
13  
14  
15  
16  
17  
18  
19  
20  
21  
22  
23  
24  
25  
26  
27  
28  
29  
30  
31  
32  
33  
34  
35  
36

Sta <sup>2</sup> BS HI FIS Elev  
BM - .45 16.20 ~~4.50~~ 16.65  
134 4.46 11.74  
133 4.98 11.22  
132 5.34 10.86  
131 4.29 11.91  
130 11.92  
129 11.96

PS

5.60

3

CHIC  
T  
DIST

0  
1  
2  
3  
4  
5  
6  
7  
8  
9  
10  
11  
12  
13  
14  
15  
16  
17  
18  
19  
20  
21  
22  
23  
24  
25  
26  
27  
28  
29  
30  
31  
32  
33  
34  
35  
36

Sta	BS	HI	FS	Inv	Reteln	
BM	-1.45	16.20		16.65		
134			4.35	11.85	10.10	6.10
133			5.00	11.20	10.10	6.10
132			5.65	10.55	10.10	6.10
131			4.27	11.93	10.00	6.20
130			4.65	11.55	9.82	6.38
129			4.48	11.72	9.82	6.38
129	5.76	17.48				
128			4.95	12.53	11.10	6.38
127			5.05	12.43	10.89	6.59
BM			4.25	17.23		Concrete Post
126			4.11	13.37	10.65	6.83
125			3.53	13.93	9.90	7.58
124			4.40	13.08	9.40	8.08
124	4.45	17.53				
123			4.32	13.21	9.60	7.88
122			3.82	13.71	8.50	8.98

CHICA  
TA  
DISTA

0  
1  
2  
3  
4  
5  
6  
7  
8  
9  
10  
11  
12  
13  
14  
15  
16  
17  
18  
19  
20  
21  
22  
23  
24  
25  
26  
27  
28  
29  
30  
31  
32  
33  
34  
35  
36

Sta	BS	HI	RS	Elev	dilat	
121		17.53	3.22	14.31	8.40	9.13
120			3.28	14.25	8.36	9.17
119			3.35	14.18	8.10	9.43
119	5.23	19.41				
118			5.00	14.41	9.90	9.51
117			5.30	14.11	9.85	9.56
116			4.35	15.06	9.65	9.76
115			4.55	14.86	9.47	9.94
114			4.61	14.80	9.35	10.06
113			4.50	14.91	9.30	10.11
112			4.50	14.61	9.60	9.81
112	5.60	20.21				
110			4.71	15.58	9.80	10.41
109			4.69	15.52	9.80	10.41
108			4.18	16.03	9.70	10.51
107			5.82	14.39	9.40	10.81
106			4.35	15.86	9.60	10.61

CHICA

TA

DISTA

0 5  
1 16  
2 11  
3 12  
4 13  
5 14  
6 15  
7 16  
8 17  
9 18  
10 19  
11 20  
12 21  
13 22  
14 23  
15 24  
16 25  
17 26  
18 27  
19 28  
20 29  
21 30  
22 31  
23 32  
24 33  
25 34  
26 35  
27 36  
28 37  
29 38  
30 39  
31 40  
32 41  
33 42  
34 43  
35 44  
36 45

Sta	BS	HI	FS	Blow	Water	Bottom
105		24.21	4.00	16.21		
BM			.06	20.15		
105	5.38	21.59			9.80	11.79
104			5.50	16.09	10.15	11.44
103			5.77	15.82	9.80	11.79
102			4.73	16.86	9.56	12.09
101			4.81	16.72	9.45	12.14
100			4.50	17.09	9.63	11.96
100	5.70	22.19				
99			4.74	17.45	10.07	12.12
98			5.48	16.71	10.15	12.04
97			4.50	17.69	9.65	12.54
96			4.30	17.89	9.77	12.42
95			4.78	17.41	9.70	12.49
94			4.08	18.11	9.70	12.49
94	4.48	22.59				
93			4.00	18.59	10.00	12.59

9

10

Sta BS HI PS Elev

92 22.59 3.86 18.73

91 3.93 18.66

90 3.98 18.61

BM —.80 23.39

BM +.90 24.29

89 3.08 19.21

88 4.20 20.09

87 5.10 19.19

~~86~~ 4.70 23.89

86 3.00 18.89

85 4.28 19.61

84 4.29 19.60

83 4.05 19.84

82 4.43 19.46

82 5.55 25.01

81 4.85 20.16

80 4.60 20.41

botten

10.05 12.54

9.91 12.68

9.95 12.64

Circuli for

— 12.59

11.65 12.64

11.52 12.77

11.05 12.84

10.73 13.16

10.80 13.09

10.30 13.59

10.05 13.84

10.75 14.26

10.63 14.38

11

CHICA

TA

DISTA

0	9
1	10
2	11
3	12
4	13
5	14
6	15
7	16
8	17
9	18
10	19
11	20
12	21
13	22
14	23
15	24
16	25
17	26
18	27
19	28
20	29
21	30
22	31
23	32
24	33
25	34
26	35
27	36
28	37
29	38
30	39
31	40
32	41
33	42
34	43
35	44
36	45

12		Station		13		
Sta	BS	HI	FS	Elev	bottom	
79	25.01		4.60	20.41	10.51	14.50
78			4.35	20.66	10.25	14.76
77			3.35	21.66		
77	4.05	25.71			10.40	15.31
76			4.30	21.41	10.80	14.91
75			3.41	22.30	10.68	15.03
74			5.80	19.91	10.41	15.30
73			6.25	19.46	10.58	15.13
72			6.55	19.16	10.75	14.96
71			7.00	18.71	10.50	15.21
70			6.25	19.46	10.35	15.36
70	3.00	24.46				
69			4.70	19.76	8.88	15.58
68			3.98	20.48	8.90	15.56
67			4.15	20.31	8.45	16.01
66			3.28	21.18	8.40	16.06
65			3.07	21.39	8.05	16.41
64					8.60	15.96



← A4 →

14

Sta	B.S.	H.I.	D.S.	Elev
BM			1.50	2296

NECen

15

58

Sta BS HI FIS Ilev

H. Dagg

921 N Laselle

59

62 Arthur M. Davis Road

Sta	BS	HI	IS	EL
B.M.		44.89	.72	44.11
0			3.80	41.03
1			5.12	39.71
2			7.34	37.49
3			9.34	35.49
4			11.10	33.73
4	2.55	36.28		
3+95			2.75	33.53
5			3.73	32.55
6			4.54	31.74
7			5.17	31.11
8			5.96	30.32
9			6.30	29.78
10			7.45	28.83
11			8.00	28.28
12			9.05	27.23
13			9.90	26.38

Liberty Township 63

Stone Sta 0 Elm Street  
 S 50° E 26.2' Blue House 3"  
 N 40° E 28.7'

Brown's gate

Sta	13e	HI	FS	Elev
13	3.05	31.43		
BM			1.80	29.63
14			5.50	25.93
14 + 80 S			8.00	23.43
	N		8.75	22.68
15			6.10	25.33
16			4.70	26.73
17			4.81	26.62
18			4.95	26.48
19			6.00	25.43
20			6.92	24.51
21			7.00	24.43
22			7.65	23.78
23			8.60	22.83
24			10.30	21.13
24	2.00	23.13		
24 + 10			1.40	21.73

From SW cor fort

10" sewer pipe 20' level  
level

gate south side

66

Sta	BS	HI	TS	Elev
25		23.13	3.10	20.03
25 + 35 ft			5.20	17.93
	S		4.45	18.68
26			3.26	19.87
26			2.40	20.73
26 + 80			3.50	19.63
26 + 90			4.45	18.68
26 + 80			5.15	17.98
27			4.90	18.23
28			9.41	13.72
28	1.10	14.82		
29			7.70	7.12
29	5.00	12.12		
30			8.65	3.47
30 + 10			9.96	2.16
30			12.00	.12
0			7.00	5.12
0	348	8.60		

67

gently rolling SA  
 feet in to depth of outlet

hd gate S  
 Trunk gate S  
 Reservoir gate S  
 Main gate N

32 34  
 29 + 90  
 2 40

Creek S side

" " "



Sta	BZ	H I	PS	Elev
39		34.53	7.20	27.33
40			5.80	28.73
41			4.80	29.73
41 + 20			4.66	29.87
42			4.12	30.41
43			3.63	30.90
44			3.31	31.22
45			3.15	31.38
46			2.50	32.03
45 + 50 S			3.95	30.58
	N		4.00	30.53
47			1.85	32.68
48			.70	33.83
48	13.00	46.83		
49			11.50	35.33
50			9.90	36.93
51			8.30	38.53

The White gate

pipe 8 ft level  
South

72

Sta	Bs	HI	Ps	Elev
52		46.83	6.60	40.23
53			5.58	41.25
B M			4.70	42.13
54			4.80	42.03
55			4.58	42.25
56			4.65	42.18
57			5.00	41.83
58			6.85	39.98
59			9.80	37.03
B M			6.70	40.13
60			10.40	36.43
60	9.90	46.33		
61			12.30	34.03
62			8.57	37.76
63			9.50	42.83
64			18.4	45.49
64	7.00	52.49		

73

Cor rock

Const map 4 N 50W 263  
 Const walnut 4 N 18W 74

30' area 90' course



Sta	BS	HI	IS	Elev
65		52.49	5.43	47.06
66			4.55	47.94
67			5.70	47.39
BM			5.00	47.49
67 + 80 W		7.38		45.11
	E	8.14		44.35
68		5.48		47.01
69		3.64		48.85
70		4.30		48.19
71		6.22		46.27
72		6.50		45.99
72 + 40	E	9.25		43.24
	W	8.70		44.49
73	W	8.60		43.89
	E	9.45		43.04
73		5.65		46.84
74		1.50		50.99
74	6.50			

Car stone

tree just W 15.7

mangle 6" S 20° E 57

15" screw tap

14 A rolling cross section 4 3/4

S 45° E

1-10" screw and 1-20" screw

cross section 12 syth 30 A

rolling

Sta	BS	HI	FS	Elev
75		57.49	4.40	53.09
75 + 85			5.44	52.05
76			4.95	52.54
76 + 40			4.80	52.69
			-.20	57.69
77			6.22	51.27
BM			8.75	48.74
			14.55	42.94
78			10.12	47.37
BM	9.00	57.74		
79			9.56	48.18
80			6.32	51.42
BM			.27	57.47
81			1.65	56.09
81	6.15	62.24		
82			4.45	57.79
83			4.52	57.72

P W near gate

top of gate post

Parapet  
water

16' long

Concrete post

Stone post W  
apple tree S 65° E

15

48.9

Sta	BS	HI	FIS	Elev
84		62.24	4.60	57.64
85			4.80	57.44
86			4.48	57.76
86+20			4.45	57.79
87			4.55	57.69
87+			6.30	55.94
88			9.50	52.74
88	3.96	56.70		
89			6.60	50.10
89 + 25	W		10.55	46.15
	E		18.90	45.80
90			5.68	51.02
91			3.17	53.53
92			2.19	54.51
93			4.45	52.25
94			7.10	49.60
94	2.30	57.90		

Bamgale W

fruit yard

2 lines 18" pipe  
 em sect 16 sq ft  
 70 A rolling

Sta	BS	HI	FS	Elev
94+	75	2	51.90	720 44.70
		W		6.30 45.40
95			2.93	48.97
96			2.50	49.40
97			3.86	48.04
98			5.45	46.45
			5.12	46.78
99			6.80	45.10
99+	30	W	9.25	42.65
		E	10.10	41.80
100			6.85	45.05
101			4.42	47.48
102			4.18	47.72
103			4.35	47.55
103	3.00	50.55		
104			3.45	47.10
105			4.23	46.32

12" sewer pipe 10' long  
15' Arroling land

grade

15" sewer pipe 30' Arroling  
land cross-section 20' high

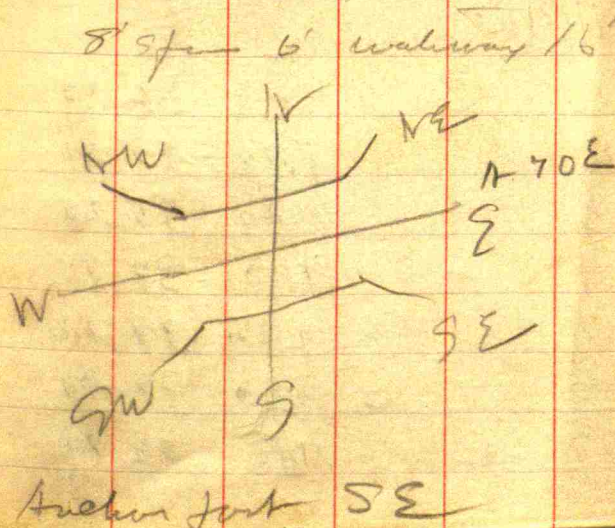
103+8 Road west

82

Sta	BS	HI	FS	Elev
105 + 60	W	50.55	6.20	44.35
	E		6.80	43.75
106			5.04	45.57
107			4.92	45.63
108			4.69	45.86
109			4.75	45.80
110			5.60	44.95
111			6.85	43.70
112			10.90	39.65
112	1.25	40.90		
113			4.48	36.42
112 + 90	water W	10.60		30.30
	" E	10.65		30.25
1 band	Point	SE	7.00	33.90
		NE	6.80	34.10
Q+		SW	7.20	33.70
		NW	6.70	34.20
B.M.			6.5	41.55

83

12" sewer pipe  
 6A level ground  
 Walnut 8" 1822 128.5  
 Walnut 10" 1810 109



Sta	IRS	H ±	FS	Elev
114		40.90	5.12	35.78
115			4.30	36.60
116			2.90	38.00
117			2.60	38.30
118			9.40	37.50
119			5.20	35.70
120			6.50	34.40
120	7.30	41.70		
121			7.60	34.10
121 + 65' W			9.90	31.80
		E	11.25	30.55
122			7.70	34.00
123			6.20	35.50
124			4.40	37.30
125			4.44	37.26
126			4.40	37.30
127			4.10	37.60

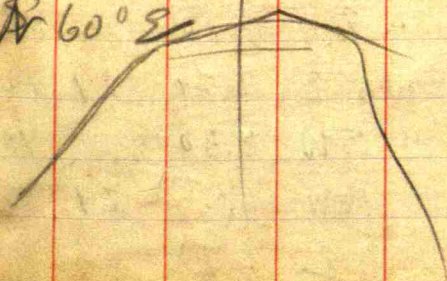
20" sewer pipe  
40' A level land

86

Sta	BS	HI	TS	Elev
128		41.70	4.40	37.30
129			5.15	36.55
130			6.00	35.70
131			6.50	35.20
131	45	35.65		
132			134	34.91
133			8.50	27.15
133	.80	27.95		
134			6.83	21.12
134	+90	Water W	12.70	15.25
		" E	12.80	15.15
135			6.61	21.94
		Bank SE	9.90	18.05
		" SW	10.05	17.90
		NW	8.50	19.45
		NE	9.60	18.95
136			3.76	23.99

87

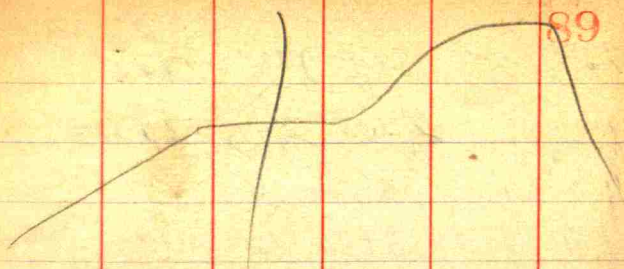
Stone Elev N 70° E  
 wall 10 ft 800 20'  
 12' 8 ft 7' 17' 17' 17' 17' 17'  
 double sign  
 Edge of about 6 1/2' east of station  
 blow out S about  
 N 60° E



88

Sta	BSS	HITS	Elev
①		27.95	27.75
①	10.63	38.38	
137		7.40	30.98
138		3.60	34.78
138+40		4.50	33.88
139		2.00	36.38
139+50		.70	37.68
139+75		.00	38.38
140		5.00	33.38
141		11.85	26.53
141	1.47	28.00	
B.M.		1.20	26.80
141+75	Water W	11.60	16.40
	" E	12.10	15.90
	Banks SE	6.80	21.20
	" SW	6.30	21.70
	NW	6.25	21.75
	NE	6.70	21.30

89



gate bar east

yd gate east  
west

faint by locust SE

8' span 9' waterway 16' long  
water never over 4' deep

11 60 E

6' span 6' waterway



Sta	BS	HI	FS	Elev
142		28.00	2.58	25.42
143			-.05	28.05
143	11.05	39.10		
144			3.48	35.62
145			1.21	37.89
145 + 90 W			2.70	36.40
#	E		3.30	35.80
146			.85	38.25
BM 147			.20	38.90
148			2.70	36.40
149			4.70	34.40
150			9.70	29.40
150 +			12.60	26.50

10" pipe

Corner

Plumb line 4" N 45 E

242'

92

Ramsey Bridge 1000<sup>00</sup>North Bridge 1000<sup>00</sup>Blue Rock Bridge 600<sup>00</sup>Green Bridge 900<sup>00</sup>

93

94

## Ramsey Bridge

BM	10.70	.75	9.95
Water N		6.70	4.00
Water S		7.80	2.90
0		4.10	6.60
1		5.60	5.10
2		5.70	5.00
2 + 50		10.70	00
3		7.00	3.70
4		6.10	4.60
5		5.00	5.70
3 + 50		6.60	4.10
1		.95	9.75
1	1180	21.05	
2		5.45	15.60
3		2.15	18.90
3	730	26.20	
4		3.80	22.40

S 40° E

95

post by telephone for

offprints of M.

Part

water at end of ditch

Ramsey gate

west

Cross section of 45 sq ft

96

HI

5

26.20 3.40 22.80

4+60

2.00 24.20

6

7.90 18.30

6+40

8.00 18.20

9.50

.25 9.25

7.75 7.25

9.50

97

Rainy's gate  
level on wall  
Parapet

flat top  
on wall  
on concrete  
21

98

## Cross Ridge

0	15.40		
B M		6.70	8.70
0		7.40	8.00
1		7.20	8.20
		8.00	7.40
2		2.50	12.90
3		-1.80	16.20
4	12.00		12.90
	21.00		
1		6.30	13.70
2		-1.50	20.150
2	4.50		25.00
3		3.50	21.50
4		4.40	20.60
5		6.60	18.40

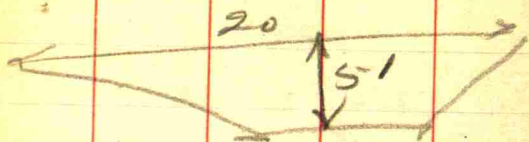
99

flow water 8' below  
 Creek fork NW  
 North

low jaw

South

100



101

← LETTER →

8102

BSI

HI

PS

Flew

395

76.46

72.51

10.10 66.36

8.65 67.81

7.10 69.36

7.30 69.16

6.70 69.76

6.00 70.46

B M

200 74.46

76.00

103

Sta 98

Water cut

" west

Bank SW

" NW

" NE

" SE

Ply just NW

Line of sight in roots of tree  
 200' west and stump 50' north  
 grade

5' ~~span~~ 6' waterway

104

Sta	Martin	Brady
	PS HI	PS. Elev
	5.40	69.51
		64.11
		8.90 60.61
		8.90 60.61
		7.20 62.31
		7.25 62.26
		7.50 62.01
		7.10 62.41
B.M.		3.00 66.51
		66.00

105

Sta 135

water east

west

Bun SE

NE

SW

NW

grade fast SE

5' from 5' waterway  
 Cross section Can see 22.5'  
 Should be 30' th



D.M. Jones Ditch in Guilford

Description

Beg on N. side of National Rd  
at end of (2) 24" Tile Culverts  
under Nat Rd at Sta 0+22.4  
and running thence N to Sta 20+0  
along the W side and 11 with  
D.M. Jones Rd. Terminating at  
said Sta 20+0 which is end  
of 48" Culvert under Big Four  
R.R.

Sta.	width of present Ditch at top.	Dist. of $\frac{1}{2}$ of present Ditch from line stakes
0+22.4	10.0	8.0
1+0	8.0	9.0
2+0	7.0	9.0
3+0	9.0	9.0
4+0	13.0	8.0
5+0	12.0	8.5

Top p.

Sta	width at Top. Pres Ditch	Dist pres $\frac{1}{2}$ to stake
6+0	12.0	7.0
7+0	10.0	7.0
8+0	10.0	7.0
9+0	10.0	7.0
10+0	10.0	7.0
11+0	10.0	8.0
12+0	12.0	8.0
13+0	13.0	9.0
14+0	13.0	8.0
15+0	13.0	9.0
16+0	12.0	9.0
17+0	11.0	9.0
18+0	10.0	9.0
19+0	9.0	9.0
20+0	10.0	8.0

Wit.

Cen sec	32	17	N	1	E
Beech	32"	17	N	57° 30'	W 40'
Catalpa	2"	"	S	22°	E 15.5'

Cen. W. of Cen	32				
Ash	3"	17	S.	58° 30'	E 29'
Walnut	10"	"	S	29°	W 28'

---

25'	144					
Stas	+	-	T	Elev		
BM	.84		100.59	100		
1		3.00				
2		4.28				
3		5.75				
4		6.95			C L	
5		8.20				
6		9.65				
7		10.74				
8	8.52	3.95				W.S.
9		6.92				
10		5.28				
11		4.90				
12		5.55				
13		5.88				
14		5.62				
15						

S.W. Cor of base of N.W. Tombstone in E yard

C.L.	W.S.	E.S.
		145
97.84		
96.56		
95.09		
93.89		
92.64		
91.19		
90.10		
	96.89	
	98.49	
	100.13	
	100.51	
	99.86	
	99.53	
	99.79	

25146

Stas	+	-	$\pi$	Elev
16.		6.20	} E.S.	103.91
17.		6.35		
18.		6.35		
19		6.35		
20		8.00		
21		11.15		
22		12.50		
23				
24				
B.M.		5.38		

147

C.L. WS. E.S.

99.21 ✓

98.86 -

99.06 ✓

98.86 ✓

97.91

94.26

92.91

536

84

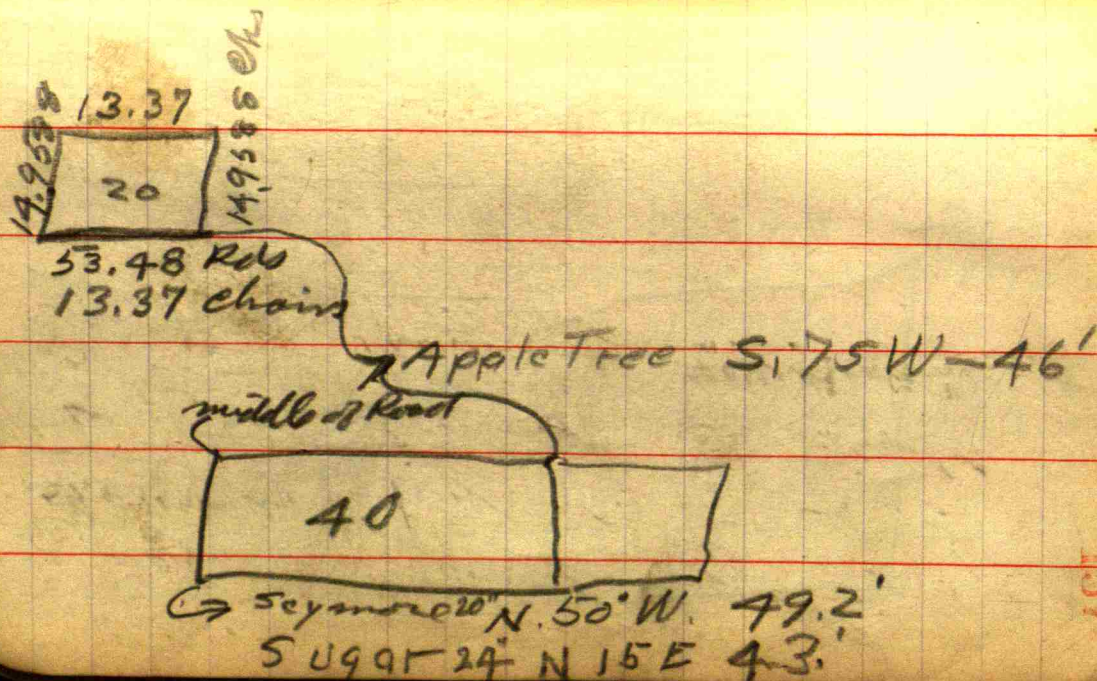
454

852

395

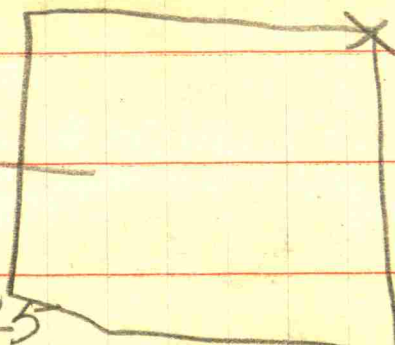
457

Beginning at NW Cor Stone  
 Thence S. 40.11 chains to SW  
 Cor. Thence E with  
 Station bearing ~~59.835~~  
 14.9588 chains



$$\begin{array}{r} 59.835 \overline{) 20.000} \quad | \quad 3 \\ \underline{17.958} \phantom{00} \\ \phantom{17.958} 2.042 \phantom{0} \end{array}$$

$$\begin{array}{r} 14.958 \overline{) 20.000} \quad | \quad 13.385 \\ \underline{14.958} \phantom{00} \\ \phantom{14.958} 5.042 \phantom{0} \\ \phantom{14.958} \underline{4.467} \phantom{4} \\ \phantom{14.958} 5.746 \phantom{0} \\ \phantom{14.958} \underline{4.467} \phantom{4} \\ \phantom{14.958} 12.980 \phantom{0} \end{array}$$



158  
Cor post  
22.1  
22.4  
22.6  
N.W.  
S.W.  
N.E.  
S.E.

$$\begin{array}{r} 11.9664 \\ \underline{5.7460} \end{array}$$

$$\begin{array}{r} 14.9588 \quad 40.11 \quad | \quad 60.00 \quad | \quad 14.958 \\ \underline{4} \phantom{00000} \phantom{00} \phantom{00} \phantom{00} \phantom{00} \phantom{00} \\ \phantom{4} 59.8352 \phantom{00} \phantom{00} \phantom{00} \phantom{00} \phantom{00} \phantom{00} \end{array}$$

$$\begin{array}{r} 13.385 \\ \underline{4} \\ 54.540 \end{array}$$

$$\begin{array}{r} 40.11 \quad | \quad 60.00 \\ \underline{40.11} \\ 19.890 \\ \underline{16.044} \\ 3.8460 \\ \underline{3.6099} \\ 2.3610 \\ \underline{2.0055} \\ 35550 \\ \underline{32088} \\ 54620 \end{array}$$

159