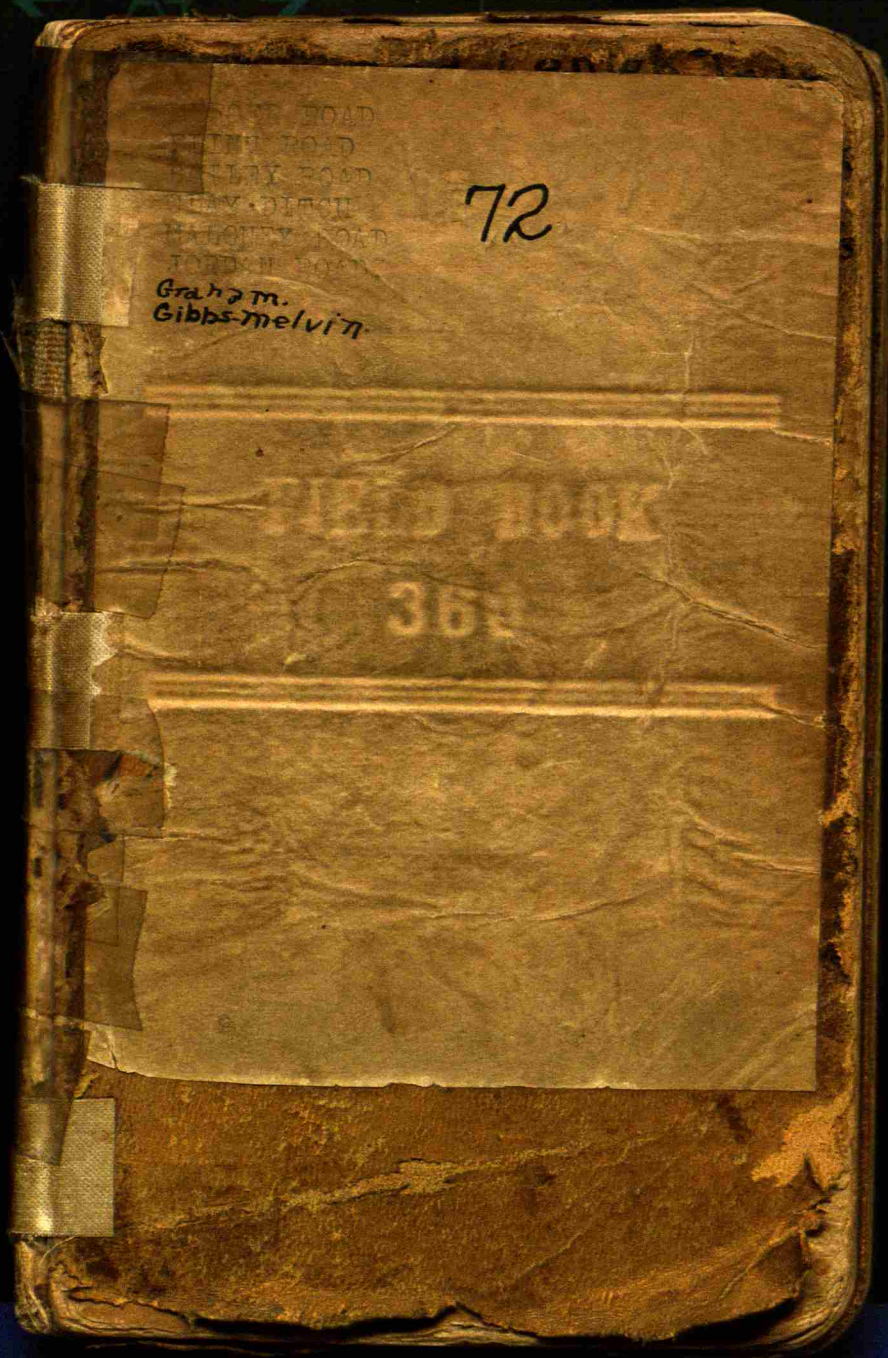


← A4 →

← LETTER →



WEST ROAD
EAST ROAD
NORTH ROAD
SOUTH ROAD
MIDDLE ROAD
TOWN ROAD

72

Graham.
Gibbs-melvin.

FIELD BOOK

362

Bench marks

#I	I.R.	E.	Turning Point	El.
200	1.47	198.53		
	1.03	198.97		
200	1.47			
	.43			
189.24			12.01	198.53
			.66	198.16
178.89	2.60	176.29		
	9.62			169.27
			7.32	
176.59	12.8	175.31		
			1.84	184.75
			16.06	
194.81	25.1	192.30		
			1.50	193.31
199.75	6.28	193.47	6.44	
	2.74		7.83	191.90
194.24			2.34	191.62
			11.62	182.62
184.35	6.35	178.00	1.73	
	1.20		11.39	172.96
	10.37		113.15	152.15
174.16	10.36			163.80
	3.14			
166.94				

200
11.19
188.81

Cor Side Walk E side Sta 0

" " " " W " " "

Turning point El. 188.81

.43

189.24

12.01

177.23

SE Cor Boulder C.P. Hornaday Turn

S. Cor Large Post Second Turn

S. E Cor Granite Boulder S
Side of Road 20' W of W. Cherry

Top of Rock at Foot of Tal. Pole located
on N. Side Top of Hill. W from Creek

Top of Large Post S side of road
South of old apple Trees

Bench Marks

H. I.	I. R.	El. B.M. offset	T. P.	EL
166.94	2.28	164.66		164.66
	8.60		158.34	
	2.11			
160.45	3.33	157.12		147.35
	10.50		49.65	
	2.60			
152.25	2.18		150.07	
	3.07			
153.14	4.02			149.12
	5.55		147.59	
			3.67	
151.26	1.99	149.27	.99	150.27
			4.89	144.38
155.16			2.66	153.10
162.76	6.15	156.61	7.66	
			1.10	163.1
			12.05	
194.71			10.15	
172.91			0.30	172.61
			11.38	
183.99			6.44	177.55
			0.51	0.6

B. M. Big rock S. Side road
opposite to fence line - Corn
field N. Side road. El 164.66

Top of Post at S. Side Road
at deflection left El. ~~157.12~~

Rock
B.M. Post at Rock Post S. Side
Road at deflection R. ~~at corner~~
El 149.12

N. End W. Rail Concrete Bridge
at Rail Road

SE Cor. Coping E Pier Big 4 R.R.

6	B.M. only		Twin point	
	IR	EL	IR	EL
198.06	18.59	165.57	736	170.70
			9.53	953
180.23			0.99	199.24
			11.44	11.4
190.69			1.23	189.46
			11.92	11.92
201.38			1.28	200.10
			10.04	
210.14			7.07	206.07
			4.47	206.70
210.52	0.75	209.77	2.75	209.77
			6.84	6.84
216.61			1.53	215.08
			4.87	218.7
219.95	3.97	215.98		219.95
			11.45	208.57
			1.30	208.81
208.81			6.75	208.06
			7.14	209.20
209.20	0.31	208.89		

7

S. Field of Armeo Beyond Ed Buchanan

Pump Spout Smith Trotter Barr Rd

S.E. Cor Flat Rock in yard 1st House
W of Glenn Conn

Bottom
B.M. Top of Bottom Step @ Jan
Conn's Porch S.E. Cor

8

		BM only		
HI	IR	El	IR	El.
209.20	8.56	200.64	2.71	216.49
	8.56		8.56	216.50
215.05			5.09	209.96
			4.87	214.83
219.83	10.44	204.39	11.40	203.43
			4.96	
207.79			3.28	214.61
			8.17	
212.78			8.90	203.88
			10.11	
213.99	10.47	203.52		
	3.15	210.84		

9

10.44 B.M. Rock SW Cor Old Road

N. End Armco ~~#~~ E. End

Rock N of H.C. Leach Gate

B.M. Rock at foot of old post N side
End of Road

14

Flinn Road

open up side ditch on N side of
E+W road 200' E and 200' W of
culvert sta 0 + 15

Culvert 12' Long with L headers Covers
at

at Crest

at Flinn 8' x 10" at yard gate
12' x 10" at Barn Gate

at Brown Woods 12' x 10"

at Clays 18' x 10"

15

25 miles A. B. Mercer Road
E. River Township

Sta	General	Asst	BW	CS	D
0		98.99	98.33	98.69	98.61
0+0	4'S	98.94	98.09	98.59	98.60
1+0	L	97.56	96.01	96.71	96.90
2+0	L	94.89	94.77	96.14	96.15
3+0	L	96.70	95.03	95.92	96.33
4+0	L	97.77	94.70	95.50	95.75
5+0	6'S	93.42	93.42	94.33	94.52
6+0	L	93.66	93.22	94.09	94.37
7+0	L	94.60	92.59	93.51	93.71
8+0	6"N	91.95	91.41	92.51	92.75
8+90		90.47	91.76		93.00
9+0	1'N	91.32	90.77	92.35	93.01
10+0	6"N	93.30	91.72	92.51	92.74
11+0	8"N	92.10	91.50	92.59	92.98
12+0	3"N	92.61	91.62	92.75	93.07
13+00	8"N	94.31	92.63	93.17	93.37
13+40		94.39	93.45	93.19	93.30
14+00	6"N	92.40	91.30	91.96	92.10
15+00	L	90.26	89.50	90.80	90.90
16+00	L	89.71	89.01	90.04	90.29
17+00	4'S	90.22	89.63	89.69	89.72
18+00	6'S	87.22	85.20	86.59	86.80
19+00	6'S	81.92	80.53	81.74	81.95
20+00	L	77.10	76.75	79.63	79.71
20+48		71.45			79.63

23

Foot	4'7"	2'6"	Form line
98.42	98.00	98.58	B.M. E1.100.00
98.09	98.00	98.56	6"N
96.58	96.31	96.93	Granite Rock by
95.99	94.79	94.93	Mercer N.E. Corn
95.93	95.12	95.89	L
95.56	95.08	96.22	L
94.27	92.96	93.21	6"N
93.95	93.05	93.53	L
93.44	93.25	94.52	8"S
92.38	91.72	91.95	1'S
	90.27	90.22	89.56 Flow N
92.46	90.74	90.85	6"S
92.48	91.59	92.76	L
92.64	91.42	91.83	8"S
92.79	91.57	92.59	1'S
93.11	92.10	93.15	L
93.00	92.22	93.85	Grade Break
91.85	90.94	92.10	L
90.75	89.83	90.22	L
90.03	89.24	89.78	L
89.56	89.81	90.75	90.51
86.71	85.96	87.91	6'S
81.70	80.33	81.83	4'S
79.62	78.11	78.29	L
		71.30	71. N

24

0+10 Drive S
0+30 Res 30 N
5+00 Fence L. S 6+90 fence W
6+75 Drive N

10+00 Fence N
13+00 Chip 80 S
13+30 Bonn 200'S
13+40 Q sec L. and fences
14+00 Bonn 150'S
16+90 Drive S + N

20+40 Phip L N + fence
line N. 20+60 fence line S

A. B. Mencer } Help. 25 Day
John Mencer } May 7, 1920

16+00 Res 400'S

stream W of N fence and
E of S fence

26

Sta	Flinc	A	B	C	D
21+0	H	76.90	76.32	78.64	78.85
22+0	6" N	78.00	77.83	78.43	78.65
23+0	1.6" N	80.24	78.06	79.31	79.48
24+0	1" N	80.83	79.14	80.16	80.64
25+0	L	80.85	80.55	81.07	81.47
26+0	L	83.33	81.97	82.90	82.93
27+13	4" W	84.10	83.60	84.48	85.11

LETTER

27

E	F	G	1" N B.M. E	81.45
78.70	76.96	76.97	E End S Rail	
78.53	78.02	78.04	6" N Conc Bridge	
79.25	78.20	78.29	L Sta 20+48	
80.78	79.53	79.81	L	
81.30	80.63	80.75	L	
82.74	82.13	82.51	L	
84.67	83.60	83.69	3" E B M constan	
			84.65	

28

Tel Poles on N Side 1's

24760 Drive S

of N. Bound. every 200'

29

Got Post 4' E of Φ at P.1.

30	20	F	Shoham			E
Sta	A	B	C	D	F	
0+00	9465	94 ¹² 5	95 ¹² 26	95 ¹² 70	95 ¹² 70	
1+00	93 ¹² 0	93 ¹² 0	92 ¹² 80	93 ¹² 20	93 ¹² 55	
2+00	91 ¹² 70	91 ¹² 50	91 ¹² 30	91 ¹² 50	91 ¹² 71	
3+00	89 ¹² 15	89 ¹² 40	89 ¹² 32	89 ¹² 45	90.23	
4+00	88 ¹² 45	88 ¹² 76	88 ¹² 60	89 ¹² 60	89 ¹² 50	
4+53	87 ¹² 10	88 ¹² 10	87 ¹² 5	88 ¹² 5	88 ¹² 76	
5+00	92 ¹² 75	91 ¹² 70	90 ¹² 86	90 ¹² 76	90.80	
5+30	93 ¹² 10	92 ¹² 45	91 ¹² 66	91 ¹² 83	91 ¹² 85	
6+00	91 ¹² 70	90 ¹² 80	90 ¹² 30	90 ¹² 80	90.45	
7+00	90 ¹² 70	90 ¹² 40	90 ¹² 12	90 ¹² 65	90.82	
8+65	91.35	91 ¹² 2	91 ¹² 2	91 ¹² 60	91.58	
8+00	91.25	91 ¹² 15	90 ¹² 20	90 ¹² 50	90.60	
9+00	88 ¹² 0	87 ¹² 75			87.60	
10+00	85.85	85 ¹² 90	84 ¹² 32	84 ¹² 46	84.21	
11+00	79 ¹² 10	79 ¹² 10	78 ¹² 92	78 ¹² 76	78.57	
12+00	75.70	75 ¹² 40	73 ¹² 90	76 ¹² 00	76.10	
13+00	73 ¹² 14	73 ¹² 06	72 ¹² 50	74 ¹² 65	74.82	
14+00	73.75	73 ¹² 30	70 ¹² 45	73 ¹² 86	74.50	
14+90	68.70	69 ¹² 75	71 ¹² 45		74.23	
15+00	71.10	71 ¹² 70	72 ¹² 20	74 ¹² 20	74.00	
16+00	79 ¹² 85	79 ¹² 70	76 ¹² 20	76 ¹² 35	76.55	
17+00	83 ¹² 95	83 ¹² 45	81 ¹² 15	81 ¹² 66	81.71	
18+00	84 ¹² 15	84 ¹² 20	84 ¹² 35	84 ¹² 40	84.83	
19+00	85.16	85 ¹² 45	84 ¹² 56	84 ¹² 96	85.20	
20+00	85.06	85 ¹² 35	84 ¹² 09	84 ¹² 52	85.06	

F	G	H	20	31
F	G	H	I	BM
95 ¹² 45	95 ¹² 30	95 ¹² 12	94 ¹² 05	High Pt.
93 ¹² 26	92 ¹² 50	93 ¹² 55	92 ¹² 85	W. Gate post
91 ¹² 65	91 ¹² 00	92 ¹² 55	90 ¹² 30	18' A station
90 ¹² 15	89 ¹² 02	90 ¹² 15	90 ¹² 00	El. 100.00
89 ¹² 75	88 ¹² 40	90 ¹² 00	91 ¹² 00	
88 ¹² 95	88 ¹² 05	90 ¹² 50	93 ¹² 00	
90 ¹² 96	90 ¹² 15	93 ¹² 45	92 ¹² 50	
91 ¹² 92	89 ¹² 40	92 ¹² 55	91 ¹² 00	
90 ¹² 90	89 ¹² 40	90 ¹² 60	90 ¹² 60	
90 ¹² 70	90 ¹² 90	90 ¹² 90	91 ¹² 30	
91 ¹² 60	91 ¹² 40	91 ¹² 82	90 ¹² 20	
90 ¹² 45	90 ¹² 55	90 ¹² 42	88 ¹² 00	
87 ¹² 50	88 ¹² 10	88 ¹² 20	86 ¹² 60	20' to C Pvt Drive
84 ¹² 66	83 ¹² 76	86 ¹² 66	85 ¹² 25	
79 ¹² 66	78 ¹² 38		76 ¹² 52	
75 ¹² 70	75 ¹² 35	76 ¹² 15	75 ¹² 30	
74 ¹² 50	74 ¹² 30	75 ¹² 30	73 ¹² 10	
73 ¹² 80	72 ¹² 95	73 ¹² 20	72 ¹² 30	
71 ¹² 90	70 ¹² 50	71 ¹² 40	71 ¹² 50	
73 ¹² 55	71 ¹² 56	72 ¹² 16	78 ¹² 50	
76 ¹² 65	76 ¹² 10	78 ¹² 10	82 ¹² 34	
81 ¹² 53	81 ¹² 33	82 ¹² 34	84 ¹² 30	
84 ¹² 40	83 ¹² 95	83 ¹² 76	84 ¹² 30	
85 ¹² 22	84 ¹² 50	85 ¹² 15	84 ¹² 30	
84 ¹² 16	84 ¹² 20	84 ¹² 33	85 ¹² 20	

Sta	32	20	67	8.75	D	F
21+00	8350	8375	8375	8240	8200	
22+00	8100	8100	8135	8105	8070	
23+00	²⁵ 8040	¹³ 8140	¹² 7620	⁹ 7560	¹¹ 7611	
24+00	³⁵ 59.75	³³ 6250	¹² 6350	⁹ 6783	¹¹ 6923	
25+00	⁸³⁴ 5440	³¹ 5600	²¹ 58.70	¹¹ 6135	¹² 62.65	
25+33		Bad	54.70		61.12	
26+00	²⁴ 5720	²¹ 5735	¹³ 5750	¹¹ 58.20	¹¹ 58.23	
26+56			5670	5775	58.20	
27+00	²⁰ 5790	¹⁸ 5790	¹² 5785	⁸ 5826	¹⁵ 58.26	
28+00	²⁴ 5990	²² 5990	¹³ 5955	¹¹ 60.31	¹¹ 60.30	
29+00	²⁴ 6900	²¹ 6850	¹⁴ 6526	¹¹ 65.30	¹¹ 65.01	
30+00	²¹ 7650	¹² 7839	⁶ 7290		¹¹ 7310	
31+00	²⁰ 8120	¹⁷ 8120	⁶ 7900	⁵ 7900	¹¹ 79.20	
32+00	²⁰ 7950	¹⁶ 7956	¹⁰ 7890	⁵ 7875	¹¹ 78.80	
33+00	²⁰ 7816	¹⁶ 7843	¹² 7796	¹⁰ 7890	¹¹ 78.93	
34+00	¹¹ 7750	¹⁷ 7786	⁹ 7760	⁶ 7850	¹¹ 79.01	
35+00	²⁰ 7855	¹³ 7890	¹⁰ 7820	⁵ 7820	¹¹ 78.26	
36+00	²⁰ 7795	¹⁶ 7820	¹⁰ 7660	⁵ 7700	¹¹ 77.13	
37+00	²⁰ 7625	¹³ 7595	⁶ 7425		¹¹ 74.83	
38+00	²⁰ 7360	¹⁷ 7370	¹³ 7283	⁵ 7052	¹¹ 70.90	
39+00	²¹ 6970	¹⁵ 6970	¹⁰ 6645	⁴ 6616	¹¹ 66.31	
39+58		²⁰ 6700			¹¹ 64.20	
40+00	²⁰ 64.36	¹⁷ 6430	⁹ 59.90	⁴ 59.92	¹¹ 60.34	
41+00	²¹ 50.61	¹⁷ 50.70	¹⁵ 52.34	³ 56.20	¹¹ 56.15	
42+00	²⁰ 4760	¹⁴ 50.40	⁸ 53.20	⁴ 54.60	¹¹ 54.64	
42+5A			Bad		¹¹ 55.10	

7	6	4	I	BM	33
8100	8130	8272	8310	NV	
8100	8130	8272	8310	✓	
7600	7812	8220	8320	✓	
6700	6620	7023	7420	✓	
6240	6150	6230		←	Cond. Soil
					62.70
					25+33
58.20	5762	5746	5720	✓	62.91
5750	5650			✓	
58.20	5760	5710	5690	✓	5600
60.30	5910	5880	5790	✓	5690
64.86	6220	6732	6710	✓	66.50
72.85	7650	7472	7610	✓	
79.06	7770	7860	7790	✓	7750
78.50	7890	7890	7750	✓	
78.50	7800	7866	7950	✓	
78.52	7755	7790	7815	✓	
78.20	7730	7790	7725	✓	
77.00	7670	7790	7760	✓	
74.40	7443	7640	7670	✓	S.W. Cor
70.86	7170	7275	7290	✓	Post 39453
66.25	6630	6820	6920	✓	69.66
		6710		✓	69.64
60.10	59.06	6635	6620	✓	Cen N Rail
59.00	55.20	5620	56.30	✓	42+51
54.86	53.95	53.55	52.90	✓	El. 57.04
	47.00			✓	57.02

	A	B	C	D	E
57 ⁹					
43	52.91 ³	49.10 ¹⁵	49.70 ¹⁶	50.30 ⁴	56.12
44	68.20 ²⁰	67.95 ¹⁵	64.55 ¹⁰	64.60 ¹⁰	64.99
45	69.20 ²⁰	69.48 ¹⁶	68.65 ¹³	69.40 ¹⁰	69.26
46	68.36 ¹⁰	68.36 ¹⁶	68.20 ¹³	69.46 ¹⁰	69.97
47	68.60 ¹⁰	68.70 ¹⁴	68.60 ¹²	69.10 ⁵	69.60
48	68.70 ¹⁰	68.90 ¹⁴	68.62 ¹⁰	69.20 ⁵	69.32
49	69.20 ²⁰	69.20 ¹⁴	69.00 ¹⁰	69.20 ⁶	69.50
50	70.20 ²⁰	70.40 ¹⁶	69.73 ¹⁰	70.15 ⁶	70.31
51	73.80 ¹⁰	73.40 ¹⁵	72.40 ¹⁰	72.50 ⁹	72.80
52	75.45 ¹⁰	75.40 ¹⁵	74.80 ⁹	75.00 ⁸	75.13
53	74.50 ¹⁰	74.40 ¹¹	74.90 ⁸		75.00
54	73.20 ¹⁰	73.40 ¹⁶	73.50 ¹²	74.10 ⁸	74.30
55	75.65 ¹⁰	75.60 ¹⁶	74.50 ¹²	75.20 ⁸	75.70
56	74.70 ¹⁰	75.10 ¹⁶	74.90 ¹²	75.80 ⁸	76.20
57	75.10 ¹⁰	75.80 ¹⁶	75.25 ¹²	75.90 ⁸	76.25
58	74.00 ¹⁰	74.10 ¹⁶	74.10 ¹²	74.70 ⁸	74.90
59	73.30 ²⁰	73.40 ¹⁶	73.30 ¹³	73.80 ⁴	73.90
60	77.20 ²⁰	72.10 ¹⁶	71.90 ¹²	72.30 ⁴	72.15
61	71.20 ²⁰	69.55 ¹⁶	69.90 ¹²	70.30 ⁵	70.23
62	67.60 ²⁰	68.10 ¹⁷	68.55 ¹²	68.90 ⁶	68.80
63	67.50 ²⁰	68.10 ¹⁷	68.55 ¹²	68.60 ⁶	68.50
64	70.75 ²⁰	69.40 ¹⁶	68.60 ¹¹	68.40 ⁶	68.45
65	64.90 ²⁰	64.10 ¹⁵	66.15 ¹²	60.80 ³	60.90
66	51.95 ¹⁵	52.20 ¹⁵	52.30 ¹²	54.70 ³	54.83
66+58		49.60 ^{FL}	50.93 ^{TOP}	53.20 ³	53.20

F	G	H	I	J	K
56.25 ¹²	55.80 ¹²	55.62 ¹⁶	55.30 ²⁰	✓	—
64.25 ¹²	64.70 ¹⁰	68.50 ¹⁴	69.30 ¹⁰	✓	✓
69.45 ¹²	68.36 ¹⁵	70.26 ¹²	70.40 ²²	✓	✓
69.40 ¹²	68.83 ¹⁵	69.30 ¹²	68.70 ²⁰	✓	✓
69.25 ¹²	69.10 ¹⁵		69.10 ²⁰	✓	✓
69.30 ¹²	69.30 ¹⁵	68.20 ¹³	68.00 ²⁰	✓	✓
69.40 ¹²	68.75 ¹⁵	68.55 ¹³	68.70 ²⁰	✓	✓
70.00 ¹²	69.70 ¹⁵	70.20 ¹³	69.85 ²⁰	✓	✓
72.50 ¹²	72.20 ¹⁵	72.70 ¹³	72.60 ²⁰	✓	✓
74.86 ¹²	74.20 ¹⁵	74.54 ¹³	74.20 ²⁰	✓	✓
75.50 ¹²		76.10 ¹⁵	75.60 ²⁰	✓	✓
73.90 ¹²	73.30 ¹⁵	73.15 ¹³	72.65 ²⁰	✓	10" Arm
75.60 ¹²	75.10 ¹⁵	76.10 ¹³	75.90 ²⁰	✓	✓
76.15 ¹²	75.00 ¹⁵	76.20 ¹³	76.40 ²⁰	✓	✓
76.00 ¹²	75.65 ¹⁵	77.00 ¹³	76.90 ²⁰	✓	✓
74.30 ¹²	73.80 ¹⁵	74.40 ¹³	74.40 ²⁰	✓	✓
73.40 ¹²	73.10 ¹⁵	74.40 ¹³	74.60 ²⁰	✓	✓
72.12 ¹²	71.80 ¹⁵	73.00 ¹³	73.20 ²⁰	✓	✓
69.50 ¹²	69.35 ¹⁵	70.60 ¹³	70.50 ²⁰	✓	✓
68.30 ¹²	67.70 ¹⁵	68.10 ¹³	67.83 ²⁰	✓	12" Arm
69.40 ¹²	68.30 ¹⁵	68.00 ¹³	69.00 ²⁰	✓	10" Arm
68.60 ¹²	69.20 ¹⁵	70.20 ¹³	70.00 ²⁰	✓	✓
60.60 ¹²	60.10 ¹⁵	62.15 ¹³	62.40 ²⁰	✓	✓
54.40 ¹²	53.00 ¹⁵	52.60 ¹³	52.70 ²⁰	✓	✓
52.40 ¹²	48.70 ¹⁵	47.50 ¹³		✓	✓

36

Sta	A	B	C	D	E
67	53.25	52.60	50.85	52.20	52.15
68	54.90	54.50	52.55	50.75	53.10
69	61.05	59.20	56.93	51.30	56.26
70	49.50	48.00	47.73	48.20	47.45
71	40.86	40.50	40.00	40.25	40.20
72	36.85	36.70	35.70	36.10	36.43
72+62	32.80	33.10	33.45	34.25	34.53
73+6.5	32.20	31.70	31.20	30.75	30.75
74+14	29.70	29.70	29.50	30.70	31.15
75	29.90	29.90	29.30	30.70	30.80
76	29.70	29.70	29.20	30.20	30.83
77	30.00	30.00	29.20	30.11	30.30
78	31.10	31.00	29.75	31.00	31.25
79	30.80	30.70	29.20	31.00	31.10
80	27.70	28.00	27.10	28.90	29.60
84+60.9	27.47	27.50	27.60		27.08
81+07.4	28.10	28.10	27.80		27.70
81+20.4	27.55	26.00	26.60		27.10
81+31					23.90
81+32					21.10
81+37.8					20.40
81+41					20.82
81+45					23.45
82+00					24.30
82+60E	26.60	25.90	26.00		24.52

37

F	G	H	I		
52.25	50.50	49.90	49.55	✓	✓
52.90	52.00	52.60	51.90	✓	✓
55.85	56.10	57.35	59.00	✓	✓
47.90	47.85	47.25	47.40	✓	✓
40.20	40.00	39.76	39.46	✓	✓
36.50	35.76	36.05	36.30	✓	✓
34.60	33.40	33.60	32.90	✓	✓
30.30	30.40		30.43	✓	✓
30.90	30.10	30.20	30.10	✓	✓
30.80	29.80	30.10	30.30	✓	✓
30.52	29.50	30.10	30.10	✓	Top Post 15'
30.20	29.30	29.70	29.50	✓	W 54804-60.7
30.50	29.36	30.35	30.45	✓	32.53
30.70	29.10	30.70	30.70	✓	(32.71)
29.20	28.10	28.30	28.80	✓	✓
27.60	28.60	28.30		✓	✓
27.40	27.40	27.60		✓	NE corner
27.80	27.80	26.90		✓	NE corner
				✓	30.39
				✓	Bridge
				✓	Floor
				✓	31.42
23.80	23.70	22.52		✓	✓

Sta	A	B	C	D	E
82+378	²⁵ 2760	⁷ 2760	⁷ 2770	¹ 27.23	¹ 27.23
83+70	²⁵ 29.00	¹⁶ 29.20	⁷ 29.30	¹ 29.40	29.40
83+50	²⁵ 38.73	¹⁵ 36.70	⁶ 32.45		¹ 32.30
84+00	²⁵ 40.26	¹⁷ 39.70	²⁷ 36.70		¹ 35.10
84+50	²² 49.32	¹³ 47.10	⁶⁷ 43.50		¹ 39.99
85+175	²⁵ 51.40	¹⁷ 49.85	¹⁰² 48.20	⁴ 44.55	¹ 46.15
86+00	²⁰ 54.22	¹⁶ 53.70	^{13F} 51.00	⁷ 50.45	¹ 51.82
86+77.5	²⁰ 58.50	¹⁷ 58.30	¹⁵⁷ 57.20	⁵ 54.70	⁶ 56.83
87+294	²⁰ 59.40	²⁷ 58.60	⁸ 54.65	⁵ 57.95	¹ 58.00
88+00	²⁰ 59.00	²⁷ 58.70	⁷ 58.70	³ 59.20	¹ 59.10
89+00	¹²⁷ 62.00	¹²⁷ 62.50	⁸ 62.50	³ 62.50	¹ 62.60
90+00	¹²⁷ 64.90	¹²⁷ 66.15	⁹ 66.40	⁵ 66.60	¹ 66.70
91+00	¹¹⁷ 70.45	¹¹⁷ 70.60	⁸ 69.22	⁸ 69.90	¹ 70.05
92+00	¹²⁷ 73.45	¹²⁷ 73.40	⁹ 72.50	⁹ 73.20	¹ 73.20
93+00	¹³⁷ 73.50	¹³⁷ 73.40	⁹ 73.10	⁴ 73.70	¹ 73.92
94+00	¹⁴⁷ 73.70	¹⁴⁷ 73.20	⁹ 73.20	⁵ 73.95	¹ 74.10
95+00	¹⁴⁷ 75.40	¹⁴⁷ 75.00	⁸ 74.40	⁸ 74.60	¹ 74.71
96+00	¹² 75.92	¹² 75.51	⁵ 75.45		¹ 75.95
96+75	¹² 74.55	¹² 74.40	¹ 74.40	⁵ 74.50	¹ 74.75
97+42.6	¹⁵⁷ 74.20	¹⁵⁷ 73.70	¹¹ 73.30	⁶ 74.30	¹ 74.60
98+00	¹⁵⁷ 73.80	¹⁵⁷ 73.40	¹⁰ 72.90	⁶ 74.10	¹ 74.30
99+00	¹⁵⁷ 73.10	¹⁵⁷ 72.70	¹⁰ 72.30	⁶ 73.60	¹ 73.75
100+00	¹⁵⁷ 72.50	¹⁵⁷ 72.50	¹⁰ 71.70	⁶ 72.60	¹ 73.00
101+00	¹⁵⁷ 72.75	¹⁵⁷ 72.60	¹¹ 71.70	⁷ 72.30	¹ 72.90
102+00	¹⁵⁷ 71.80	¹⁵⁷ 71.90	¹¹ 71.20	⁸ 72.00	¹ 72.65

F	G	H	I
25.60	¹⁷ 25.60	²⁵ 24.55	✓
³ 29.70	¹⁵ 30.12	²⁵ 32.00	21.55 ✓
³⁷ 33.00	¹² 34.90	²⁵² 35.05	✓
⁵ 37.05		^{27F} 37.12	✓
³ 41.35	^{10C} 41.60	^{21F} 42.20	✓
⁷ 46.20	¹⁸ 46.70	²⁴ 40.30	✓
⁷ 51.80	¹² 51.80	¹⁶² 51.40	51.65 ✓
⁵ 56.60	¹³ 56.80	¹⁴⁷ 57.10	56.60
⁷ 57.90	¹¹ 57.10	¹⁶ 56.60	55.70 ✓
⁴ 59.20	¹²⁷ 58.90	¹⁶⁷ 57.85	58.40 ✓
⁵ 62.55	⁹ 62.60	¹¹⁷ 64.20	65.40 ✓
⁵ 66.90	¹⁰ 67.05	¹³ 67.50	67.90 ✓
⁵ 70.12	¹¹ 70.82	⁷⁷ 72.20	73.40 ✓
⁷ 72.10	² 72.90	¹⁶⁷ 73.80	74.00 ✓
⁷ 73.80	¹² 73.30	¹⁵⁷ 73.40	73.20 ✓
⁶ 74.00	¹² 73.40	¹⁵⁷ 73.60	73.50 ✓
⁷ 74.60	¹¹ 74.50	¹⁵⁷ 74.70	74.50 ✓
⁷ 75.20	¹⁶ 75.40	²⁰ 75.65	32 ✓
⁶ 74.40	¹⁰ 74.40	²⁰ 74.50	✓
⁶ 74.16	¹⁰ 73.70	¹⁴⁷ 73.70	73.70 ✓
⁶ 73.90	¹¹ 73.20	¹⁴⁷ 73.50	73.50 ✓
⁵ 73.20	¹⁰ 72.85	¹²⁷ 73.00	73.10 ✓
⁵ 72.70	¹⁰ 71.75	¹³⁷ 72.60	72.90 ✓
⁴ 72.60	¹⁶ 71.25	¹⁴⁷ 71.80	71.60 ✓
⁴ 72.25	¹⁶ 71.15	¹⁴⁷ 71.00	70.70 ✓

Sta	A	B	C	D	E & F
103	7220	7230 ¹⁴⁷ 157	7170 ¹⁰	7295 ⁶	7312
104	7370	7430 ¹⁵⁷	7360 ¹⁰	7450 ⁵	7495
105	7450	7460 ¹⁵⁷	7400 ⁹	7525 ⁵	7505
106	7560	7560 ¹⁵⁷	7580 ⁹	7615 ⁵	7660
107	7600	7660 ¹⁵⁷	7620 ¹¹	7700 ⁵	7710
108	7585	7585 ¹⁴⁷	7550 ¹¹	7660 ⁵	7665
109	7470	7450 ¹⁴⁷	7450 ¹⁰	7630 ⁵	7612
110	7480	7520 ¹⁵⁷	7490 ¹⁰	7615 ⁶	7620
111	7600	7580 ¹⁴⁷	7520 ¹¹	7670 ⁶	7679
112	7600	7650 ¹⁴⁷	7600 ¹¹	7730 ⁶	7750
113	7560 ²⁰	7580 ¹⁵	7560 ¹¹	7670 ⁶	7690e
114	7210 ²⁰	7540 ^{100 N}	7530 ²⁰	7620 ²⁰	7655
114+7A		7560	7590		7605

F	G	H	I
7295 ⁷⁴	7190 ¹¹	7250 ¹⁵⁷	7310 X
7465 ¹¹	7360 ¹⁴⁷	7440 ¹⁵⁷	7530 X
7530 ¹¹	7410 ¹⁵⁷	7430 ¹⁵⁷	7485+V
7640 ¹¹	7610 ¹¹	7600 ¹⁴⁷	7660 X
7710 ¹¹	7640 ¹¹	7650 ¹⁴⁷	7660 X
7645 ¹¹	7560 ¹⁰	7615 ¹⁴⁷	7650 X
7670 ¹¹	7500 ¹⁴⁷	7530 ¹⁴⁷	7550 X
7615 ¹¹	7500 ¹¹	7535 ¹⁴⁷	7590 V Top S Header
7670 ¹¹	7540 ¹¹	7560 ¹⁵⁷	7570 X Culvt 114+
7735 ¹¹	7590 ¹¹	7650 ¹⁵⁷	7700 V 75.80
7670 ¹¹	7610 ¹¹	7620 ¹⁵⁷	7670 V 75.15
7620 ²⁰	7570 ²⁰	7510 ^{100 S}	7592 V RR 100 S N
	7616	7655	V

ON N. 4th LEADER
114+

Est. Maloney Rd -

Excavation	8188 Cuyds @	35¢	2865.80
10" C.M. pipe	20' @	1.25	12.50
12" C.M. pipe	94' @	1.50	141.00
15" C.M. pipe	132' @	2.00	264.00
18" C.M. pipe	52' @	2.50	130.00
Concrete	67.96 Cuyds @	15.00	1019.40
Stone	2270 Tons @	2.70	6129.00
Asp. on Tar	13157 Gal @	.14	1841.98
Gravel	2753 Tons @	2.20	6056.60

18460.28

1339.72

\$19800.00

52

G. H Henning Rd Est.

Excavation 4000 Cu Yd @ 35¢ 1400⁰⁰

53

Flinn Road Levels

Sta. No	A	B	C	D	E
0	3' W. of Boundary 109.92	W. Bound 100' W. of B 109.24	W. Fence Line	W. Ditch	8' W. E 110.18
Road S. 100' S of Sta. 0.					
0+13	10" x 26' Armo. with 4x4' L				
0+15	Fence Line E + W. N + S F.				
1+00	109.82	109.95	15' 11" W	109.62	110.14
2+00	110.77	111.04	15' 11" W	110.00	110.40
3+00	112.15	112.60	15' 10"	111.36	111.75
3+70	W. Fence E. 3+90 Drive E + Road				
4+00	112.37	112.97	15' 11"	112.29	112.59
5+00	112.24	112.79	15' 11"	112.10	112.73
6+00	111.61	112.18	15.5'	112.02	112.47
7+00	111.75	111.85	15.5'	111.40	111.75
6+90	W. F. E.				
8+00	108.04	108.38		108.38	112.22
8+10	Flat Top 18' Rdway 10' Span 4' Rst 1' off Cen W. 5 Rows 15' N. W. F.				
8+20	Outlet 10" Clay Tile 15' W. W. 13				
9+0	112.85	113.10	15' 11"	111.45	112.23
10+0	113.65	113.74	15'	113.08	114.01
11+0	114.15	114.06	15'	113.38	114.31
12+0	114.02	114.38	15'	113.76	114.73
13+0	114.10	114.20	15'	114.06	114.93
13+39	Prop. Line E + Q Sec Line				
14+6	114.50	114.57	15'	114.25	105.38

F	G	H	I	J	K
8' E. L 110.53	110.40	E. Ditch 110.39	E. Fence L. 100' E. of F 111.31	E. Bound 111.31	3' E. E. Bound 111.31
109.52	Note Ditch chosen Rd 300' W of O.				
Headens	F.L. W 108.32	F.L. E 108.42	Tel. Poles 150' Apout + 1' E of W. F. Line		
and 28' Apout					
110.69	110.28	10' E 109.82	12.5'	109.82	109.73
111.07	110.68	11" E 110.15	13'	110.42	110.16
112.32	112.00	11" E 111.26	12.5'	111.78	111.13
250' E. E. F. Covey					
112.97	112.62	11" E 112.65	14'	112.77	112.58
113.35	113.00	11" E 112.21	13.5'	112.29	112.35
113.00	112.71	11" E 112.20	13.5'	112.58	112.60
112.38	112.00	11" E 111.05	14'	111.30	111.40
112.70	112.47	11" E 109.52		111.40	111.45
FL. W 107.45	FL. E 112.80	FL. E 107.50	(14" Tile From E)		
F.L. 107.45					
112.76	112.37	11" E 111.40	14.5'	111.79	111.00
114.37	114.15	11" E 113.06	14.5'	104.33	104.40
114.88	114.56	11" E 113.81	15'	114.76	114.81
115.31	114.69	11" E 113.38	15'	114.54	114.64
115.43	114.90	11" E 114.07	15'	114.42	114.50
115.70	114.99	114.85	15'	114.79	114.50

64 Flinn. Road Cont.

Sta No.	A.	B.	C.	D.	E.
15	115.61	115.70	15'	115.70	115.77
15+75	Rail	7 E			
16+0	116.96	116.93	15'	116.01	116.51
16+50	Wire	Fence W			
17+00	117.40	117.40	15'	116.76	117.27
17+30	Gate	E. +50 W. 7 E. +25'			
18+00	118.91	118.80	35'	117.99	117.91
18+40	E	Thorp Res	300 W. + Gate		
19+00	116.7	116.81	35'	116.82	116.96
19+10	Drive	W +50 Barn	100 E + 65'		
20+00	115.58	115.60	15'	115.72	116.34
20+10	Barn	150' W + 50 W. 7. W.			
21+00	117.25	117.20	15'	116.66	117.26
22+0	118.89	118.68	15'	117.76	118.42
23+0	118.04	118.10	15'	117.83	118.77
24+0	118.28	118.40	15'	118.04	118.78
25+0	119.25	119.35	15'	118.70	119.46
26+0	120.10	120.10	15'	119.51	119.76
26+79.5	H. mi. Stone	+ Prop	L E. + W		
27+0	120.70	120.94	15'	120.09	120.34
28+0	120.82	120.78	15'	120.14	120.53
29+0	119.98	120.04	15'	119.90	120.30
29+40	Drive	W + Res	300 W		
30+0	119.64	119.60	15'	119.48	120.07
31+0	119.86	119.85	15'	119.36	120.41

65

F.	G.	H.	I.	J.	K.
116.21	115.76	115.22	15'	115.98	115.90
		9'			
116.96	116.37	116.17	15'	116.70	116.70
117.89	117.40	117.18	15'	117.40	117.40
Flinn Res. 60 E + 9.5 W. 7 W					
118.36	118.15	118.15	15'	118.36	118.37
to Flinn Barn E					
117.28	116.91	116.21	15'	116.50	116.52
W. 7 E					
117.07	116.65	116.16	15'	116.61	116.55
		12'			
117.56	117.14	117.04	15'	117.30	117.20
118.32	118.45	118.01	15'	118.58	118.60
119.21	118.95	118.25	15'	118.05	117.90
119.50	118.97	118.41	15'	118.17	118.00
119.99	119.25	119.00	15'	119.00	119.00
120.45	119.89	119.85	15'	119.24	119.20
		0'			
121.10	120.68	120.83	15'	120.94	120.70
121.16	120.71	120.11	15'	120.75	120.70
121.07	120.35	119.39	15'	119.96	119.70
		12'			
120.53	120.27	119.87	15'	119.93	119.93
120.34	120.33	119.60	15'	119.93	119.93

Sta No.	A	B	C	D	E
31+83	16'x10"		7LW118.25	ERD	120.42
32+0	119.19	119.20	15	119.08	119.50
33+0	119.58	119.46	15	119.46	119.76
34+0	120.77		15	120.23	120.64
34+50	W7.E				
35+00	121.95	121.76	15	121.00	121.45
36+00	122.71	122.77	15	121.78	122.24
36+21	Drive E + 26	R7	E + 31	Drive	
37+0	123.43	123.38	15	122.35	123.22
38+0	123.65	123.24	15	123.08	123.75
39+0	124.54	124.03	15	123.67	124.23
40+0	125.00	124.86	15	125.40	125.40
40+14	Stone and Rd. W.				
40+29	Fence Line W. From				
	99.6' E of fence line in open				
41+00	126.29	124.53	20	123.21	125.13
42+0	124.96	124.35	20	123.65	124.95
43+0	126.03	124.96	20	123.56	124.84
44+0	125.20	124.50	20	123.55	124.69
45+0	125.31	125.07	20	123.54	124.72
46+00	124.31	124.03	20	123.51	124.75
46+60	S. R.R. Rd. W Fence E + W				
46+60					
46+80	121.26	132.99			124.65
	at Bot. Hill Ditch				
47+00	128.22				

F	G	H	I	J	K
	F.L.E	118.13			
120.30	120.00	119.10	15	118.42	118.40
120.61	118.93	119.47	15	119.12	119.50
121.13	120.69	120.25	15	120.28	120.20
121.67	121.27	121.13	15	121.65	121.60
122.92	122.52	122.55	15	123.25	
	E.				
123.55	123.23	122.64	15	121.76	121.00
124.24	123.83	123.50	15	123.13	122.47
124.43	124.35	123.96	15	123.42	123.16
125.64	125.35	125.10	15	125.32	125.32
Sta 40. on W. side	Tel. poles				
ditch. Rail Fence on W. side to R.R.					
125.97	125.22	124.68	15	125.03	124.29
125.43	125.01	124.22	15	124.26	123.83
125.54	125.10	124.62	15	125.02	124.92
125.10	124.65	124.36	15	124.66	124.60
124.81	124.70	124.23	14	125.32	125.32
124.51	124.46	123.88	14	124.27	124.27
126.48	126.48	124.10	15		
on S. Rail					
128.95					128.53

Flinn Road Cont.

Sta No	A	B	C	D	E
47+25	12409	12409	Top West		12649
47+25	12	V.T. Under Rd	123.51		
47+40	N line R. of W - E + W				
48+00	12360	123.60	No fence	12390	12492
48+00	Drive E + Res 600' E				
49+00	125.21	125.12	None	124.53	125.72
50+00	125.27	125.30	15	125.11	125.58
50+20	W 7' W				
51+60	125.41	125.40	18'	125.06	125.76
52+00	125.05	125.05	16'	125.12	125.80
52+80	Empty House 60 W				
53+00	125.24	125.24	15	125.44	125.79
53+53	Prop Line 53+53 E + W				
54+00	125.06	125.07	15	125.15	125.72
55+00	125.80	126.23	15	126.22	126.71
56+00	128.67	128.88	15	127.90	127.87
56+20	So. Sch. H. L. W No fence				
57+00	130.41	130.25		129.41	130.24
57+60	Sc. H. 60 W				
58+00	131.77	131.60		131.39	131.69
58+05	N Sc H. Line W.				
59+00	131.72	131.60	15	131.29	132.12
60+00	131.22	131.49	15	131.15	131.90
60+40	Rail Fence W. From Sc. H. Poles are 3' E of W. T				
61+00	131.30	131.30	15	130.75	131.40

7	G	H	I	J	K
126.57	124.62				123.34
	Top E end → 123.95				
124.91	125.30	124.90	19	124.41	124.40
	Wooden Box Under Drive 20' long 123.60				
125.72	125.59	124.36	14	125.83	126.00
125.72	126.53	124.49	14	125.87	125.90
126.05	125.70	124.38	14	125.38	125.38
126.05	125.55	124.39	14	125.00	125.01
126.01	125.80	124.71	14	125.07	125.00
126.36	125.46	124.76	14	124.44	124.44
127.11	126.98	126.46	15	126.26	126.20
128.35	128.14	127.69	16	128.15	127.60
17 Front Sch. H. Lot					
130.66	130.23	129.62	16	130.36	130.36
132.24	131.88	131.60	16	132.22	132.22
132.67	132.30	131.81	15	132.03	132.13
132.39	132.11	131.44	15.5	131.86	132.05
H. Poles are 3' E of W. T					
136.80	131.55	130.50	15.5	130.97	131.40

70

Sta No.	A	B	C	D	E
62	130.23	131.20	15	130.49	131.25
63	130.70	130.70	15	130.78	131.20
64	131.23	131.01	15	131.09	131.49
64+20	Drive E	63+00	30m	300' E	
65+00	Homen Kennedy Reservoir E				
65+00	130.87	15	131.01	131.41	
66+00	129.38	129.16	15	129.16	129.66
66+95	100' W 129.84	20' 130.13			
		100' N	127.88		

71

F	G	H	I	J	K
131.54	131.42	129.90	15.5	130.12	130.20
132.00	131.53	131.50	15.5	131.40	131.00
131.28	131.81	131.69	15.5	131.72	131.80
64+30	30m	250' E			
131.93	131.50	131.31	25	132.80	133.35
130.19	129.91	129.45	15	130.27	130.40
129.41			20' 100' E	129.36	128.67

72

Prop Owners E. side

Earl Covey to Sta 13+39

John Flinn to " 26+79.5

Chas Clay to R.R.

Mrs Chas Hunt to Sec line

Homer Kennedy to End

Prop Owners W. Side

W. E. Tharp to 26+79.5

Flora Hays ~~to~~ 35 Rods To Sta 32+50

Chas Clay to Road

Mrs Annie McReynolds to R.R.

John Clark to 50+20

Mary Ashen to Sec. Line

James Scott to end except. Sec. House

73

<u>Bailey</u>	17'	Ditch	Fence	8'	4'	8'	Ditch	Fence	17'		
S+9	A	B	C	D	E	F	G	H	I	J	K
0	125.54										125.57
0+15	Fences Begin and are 30' apart										
1+0	125.96	125.66	125.32	10	125.63						
2+0	126.52	126.52	125.88	16	126.35						
3+0	126.51	126.75	126.51	16	126.92						
4+0	127.28	127.80	127.30	16	127.66						
5+0	126.49	126.75	126.52	16.5	126.70						
6+0	125.00	125.25	125.30	16.5	125.61						
6+0	W 7. N			16.5							
PC	124.75	124.88	125.18		125.50						
PI	125.58	125.58			124.95						

Con Post is 21.5' From
also Chas Clay N. line +
Road turns N. at P.I. and tel po
line Fence W. + S. at P.I.

P.T.					
✓	124.95	124.92	124.90	17.5	125.80
9+00	125.62	125.70	125.21	17.5	125.97
10+0	125.90	125.59	125.59	17	126.04
9+90	Barn 90 E				
10+60	Drive E to Barn				
11+00	126.58	126.60	126.13	17	126.61
11+00	Res 100 E + 40 Fence E				
12+0	127.12	127.11	126.46	17	127.00
+70	Fence E + 70 Drive W				
9/50	J. Scott N line				

4'	8'	Ditch	Fence	17'
F	G	H	I	J
125.36				125.57
Tel. poles 1" N. S Fence 200' apart				
126.00	125.76	125.40	125.93	126.32
126.76	126.63	126.03	14	126.54 126.96
127.46	126.99	126.61	14	127.26 127.60
128.12	125.00	127.63	14	128.30 128.55
127.15	127.06	126.36	13.5	127.33 127.72
126.13	126.01	125.41	13.5	125.60 125.60
			13.5	
125.95	125.90	124.90		125.50 125.37
125.12	124.90			124.90

P.I. Drives S+W. at P.I.
John Scott S. line
Poles are 3' E of Rail Fence on W. Side
Con post 15' W P.I.

126.37	126.01	125.00	15.5	125.56 125.56
126.30	126.06	125.58	15.5	126.07 126.80
126.71	126.41	125.92	15	126.17 126.20
+65 W 7. E				
127.21	126.82	126.80	15	126.81 126.81
+45 Drive E + 90 Fence E				
127.56	127.18	126.96	15	127.01 127.00
+90 Fence W + End Fence W. Side				

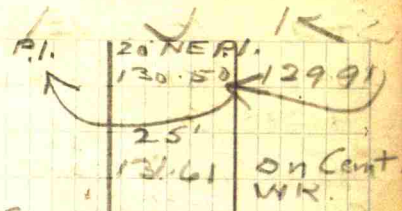
C11+W.R.P.

78
 St 9 A B C D E
 13 12670 12670 None 126.61 127.15
 P.C. 127.07
 P.I. 127.15
 P.I. S.E. cor Clay Barn 15' N. Line Fence
 P.T. 127.31 127.36 126.90 127.39
 15 127.96 127.80 127.20 127.74
 15+05 W. 7' N. Chas Clay own's Prop on N
 15+55 Maple 15's E + 65 Maple 15's E P.C. Christian Ch 50' S
 P.C. 128.79 128.86 128.86 129.07
 P.I. is 29' S.W. cor. Post
 P.C. + 30 - Church W. line + Fence
 12' S of E 12' Alley Running W.
 Running N. from
 P.I. + 20 J. Scott Res. 40' W P.C. +
 4 Maples on W side 2 2' W. Tel poles on E. side at Fence line
 No Fence on W side to Chas
 P.I. 129.49 129.89
 P.T. 130.12 130.27 129.85
 17 130.27 130.80 130.11
 16+95 Prop. W 17+53 Prop. W.
 P.C. 129.25 131.23 130.89
 18+04 Prop. W and same is S. Bd of St.
 Then Small Res in Cor. facing W.
 Running W. P.I. + 10. Scales N in line 27.5

79
 7 8 14 1 2 11
 127.05 127.05 126.78 14 126.71 126.71
 127.20 127.01 126.81 13 126.90 126.90
 126.96 127.22 126.40
 ca + Prop Line E 12' Drive N. E of Barn
 127.74 127.45 127.11 14.5 127.00 126.80
 128.25 127.83 127.49 15 127.60 127.70
 129.44 129.47 129.44 15 129.84 129.84
 Tel. poles on N. side
 begins P.I. + 30 W. Scott Blacksmith Shop
 in line with C.L.
 P.I.
 20. R.S. Goodwin Res 40' W Cement Whint
 129.76 129.64 129.90 129.95
 129.94 129.73 129.97 130.25
 130.11 129.91 130.40
 7 L. 27
 130.25
 7 L. 31
 130.99
 + Clay Res 70 E
 130.93 131.12 130.73
 W. Fence on E runs to P.I. + 20
 Cor Post is SW. Pin 34
 Scales N in line 27.5

Sta. No	A	B	C	D	E
P.L.	17' in Lot 131.15				131.27
P.L. + 25	Maple 18' N			+ 26	Shed 29'
P.T.	74.24 131.72	20' 131.67			131.60
Cement Walk turns W to store and is					
19+00	Maple 17'S				Shed 70'
19+0	25.74 131.91	20 131.94			131.70
18+90	Res 35' N				
19+30	Maple 18' N			+ 51	Maple
P.C.	25.74 131.03	20 131.13			131.37
P.C.	12' Alley S			P.C. + 6'	Chas
18'S	P.C. + 20			Brickent	Stone 30 N
25'S	SW. cor Brickent Wk				
Chas. Mitchell Res 40'S. P.I.					
Running N.					
P.I.	20 SW Pt. 130.75	P.I. 131.07			8 131.66
P.T.	20' 131.41	13.17 ditch 130.75			131.36
P.T.	Pump 21 W + 5 Res 40 W				
21+0	20 131.45	17 131.33		8 131.10	4' Ditch 130.40
21+18	A ends S. Bldg				
21+30					
21+74	S. Rail				
22+0					
22+00	130.23				129.97
22+00	RR Sta 4 80' E				
22+27	S. R. Switch				
23+0	20 Ditch 128.70	17 129.00		8 E. side 129.65	

	F	G	H	I
P.L.	130.78	131.37	130.63	
+ 47	Maple 18' N			
P.L.	131.55	131.70	131.58	
25' N of CL. S Edge				
19+0	131.76	131.85	131.58	131.70
18+90	Res 35' N			
19+30	Maple 18' N + 51' Maple			
P.C.	131.97	131.81	131.78	131.88
P.C.	12' Alley S P.C. + 6' Chas			
18'S	P.C. + 20 Brickent Stone 30 N			
25'S	SW. cor Brickent Wk			
Chas. Mitchell Res 40'S. P.I.				
Running N.				
P.I.	131.62	131.31	131.00	
P.T.	131.57	131.11	130.90	
P.T.	Pump 21 W + 5 Res 40 W			
21+0	130.55	131.20	130.69	
21+18	A ends S. Bldg			
21+30				
21+74	S. Rail			
22+0				
22+00	129.96	129.91	130.35	
22+27	S. R. Switch			
23+0	128.96	128.91	129.05	



Bambos.

19.3 Bldg

13ldg. 28

20 E. old Rd

Sto	A	B	C	D	E
23+30	RR N Lyon	W. side	Fence W		
+ 70	Barrn	40 E	+ Res	200 E	
24+0	26' Fence	20'	15' old rd		
PL.	129.55	129.75	129.48	10' old rd	
	23 F	20' old rd		129.88	
	129.31	129.47			
Chas Mendonhall owns on W. side from					
Both sides to end. John Clark owns on					
Clark + RR.		17	Fence	14' D	8'
Pl. sect.		129.35	17	129.53	130.50
PT	130.60	130.71	16.5	129.90	131.26
26+0	130.60	130.60	16	130.33	132.07
27+0	130.45	130.70	16.5	130.50	131.97
28+0	132.53	132.50	16	132.00	132.88
29+0	132.30	132.20	16	132.04	132.86
30+0	130.58	130.50	15	130.60	131.15
31+00	130.20	130.10	15	130.01	130.70
31+50	Rail Fence E		14.5		
32+0	128.60	128.60	14.5	128.54	129.31
32+15	Rail Fence W				
33+0	127.30	127.30	14	127.03	128.01
33+40	W 7 W	+ 90	Res	100 W	
34+00	126.41	126.23	15	126.28	127.30
34+50	F. W	+ 20	Drive	E + W	
35+0	125.74	125.70	13.5	125.70	126.59
35+00	Rail Fence W	+ 20	Barrn	100 W	
36	126.07	126.07	14	126.27	126.69

F	G	H	I	J	K
+ 62	RR N L	on E	Fence	Barrn	E side
Ditch	8' Fence	10'	20'		
129.57		130.20	130.20		
48' old rd	9' fence		20'		
129.57	129.86		130.01		
RR. to sec line. Then James Scott on					
E. side from RR to sec. line. 30' Rd below					
	8'	110.	17	20	
130.57	130.20	129.30	15	129.48	129.47
131.38	131.45	129.85	14.5	130.37	129.95
132.46	132.24	130.62	15	130.27	130.00
132.49	131.80	130.63	15	131.25	130.91
133.03	132.54	131.62	14.5	132.37	132.20
133.14	132.75	131.71	14.0	132.74	132.42
131.98	131.28	130.70	15	130.95	130.62
131.27	130.77	129.99	15	131.04	131.40
			15.5		
129.81	129.37	128.70	15.5	129.23	129.50
			16		
128.76	127.95	127.10	16	127.75	127.89
			18		
128.00	127.29	126.42	18	126.97	127.00
127.14	126.50	126.87	18	126.61	
			18		
127.31	126.77	126.25	18	126.33	126.10

84

Sta	A	B	C	D	E
37	126.50	126.50	13	126.20	126.50

37+95 End Fences Both

38+8	125.40 100	125.58 20'		125.85	
------	---------------	---------------	--	--------	--

38+10	125.62	126.04			
-------	--------	--------	--	--	--

E+W Road Slopes W

4

F	G	H ₁₂	J	K
127.08	126.54	126.34	18	126.97

Sides

125.95	125.76			
--------	--------	--	--	--

126.06				
--------	--	--	--	--

Abncht Fall beg 200' W. of 38+10

35

127.08				
--------	--	--	--	--

125.30	125.29			
--------	--------	--	--	--

126.06	126.07			
--------	--------	--	--	--

Bailey Road
Levels for Tile

P.I. 0	130.50
0+25	129.69
0+50	129.39
0+75	128.90
0+80	127.15

At Scales

Prop. Line

R.R. Ditch

Line thru PI on Radius

PI.	126.40
0	126.95
0+50	126.39
1+00	125.78
1+50	124.96
2+00	124.15
2+49	123.95
2+64	122.43

on Ground at

4

Prop Line
RR side DitchTile
123.33

Top 6" Tile from W
9' ~~Not P~~ ~~at~~ of 4 at
point 73' Not P.I.
5" Tile from N empties
into 6" Tile at this point
and is 9' E of 4

Maloney Road &

Sta	A	B	C	D	E
0+00	94.35 ²⁵	96.32 ¹⁸		97.51 ⁸	97.69 ¹⁰
1+00	98.69 ⁴⁰	97.45 ³⁰	100.13 ²⁰	99.65 ¹⁰	101.96 ^F
2+00	98.15 ²⁵	104.36 ¹⁵		104.63 ⁸	104.45
2+84	102.49 ¹²	106.16 ⁹			106.63
3+25.9	103.59 ¹⁵	106.80 ⁸			107.23
4+00	102.31 ²⁰	106.85 ¹¹			107.59
5+00	103.62 ³⁰	106.58 ²¹	107.77 ¹⁵	108.95 ⁸	108.61
6+00	104.80 ²⁷	105.25 ²⁵	106.09 ¹⁸	106.32 ⁸	106.34
6+82.14	97.60 ³⁰	104.90 ¹¹		105.39 ^{3' IR}	104.91
7+52	101.93 ^{FL NS}	101.20 ^{FL S}			104.44
8+03.50	98.96 ²⁴			104.38 ¹⁰	104.49
8+80.5	98.02 ¹⁷	104.81 ¹⁷			105.31
9+53.41	97.50 ²⁴	106.70 ¹⁵			106.14
10+00	99.69 ²²	106.24 ¹³			106.19
10+64.85	100.52 ²⁵	104.72 ¹⁵	106.01 ⁶		104.90
11+15.8	100.69 ¹⁶	105.55 ¹²			105.96
12+00	104.20 ²⁶	106.50 ²³	109.14 ¹⁵	107.49 ⁷	109.21
13+00	113.25 ³⁵	119.13 ²³	116.73 ¹³	117.37 ⁵	116.77
14+00	114.60 ⁴¹	123.00 ²⁸	123.96 ²¹	122.55 ¹⁵	122.76
15+00	115.26 ³⁰	119.23 ²⁴	121.14 ¹²	120.40 ²	121.35
15+72	120.43 ³⁵	119.57 ²⁷	121.20 ¹⁰	120.40 ⁵	123.54 ^{pt.}
16+60	115.22 ⁴⁶	120.75 ²⁷	119.06 ²²	119.49 ²	121.33
17+41	107.50 ³⁵	110.76 ²⁰	116.17 ¹¹		117.31
OT. 18+20.9	111.20 ²⁰	116.20 ¹⁵	117.44 ¹²		117.87
19+00	120.10 ³⁰	120.56 ²⁰	121.06 ¹⁵	120.70 ⁹	120.61

Brow

F	G	H	I	B.M.
97.36 ⁸	99.53 ¹⁶		99.53 ²⁵	El. 100.00
101.90 ¹⁰			102.00 ²⁰	SE Corn
106.94 ⁵			107.15 ²⁸	SE Wing
106.40 ⁶	108.95 ¹²		109.40 ²⁷	Bridge at Inter Road.
106.29 ⁶	108.97 ¹⁴		109.80 ²⁴	96.74
107.76 ⁶	110.24 ¹⁴		111.25 ²⁴	100'S on Road
108.42 ⁴	111.67 ¹³		112.32 ²³	Flan
107.67 ¹⁴			111.45 ²²	Bridge
106.9 ⁴	107.61		108.80 ¹⁸	S. End
				101.06
				Bed
103.43 ⁶	109.10 ¹⁴		110.15 ²⁵	Stncom Center
105.65 ⁴	109.39 ¹⁵		110.52 ²⁵	Bridge 88.56
106.17 ³	110.59 ¹³		111.20 ²⁵	
107.95 ¹¹	111.40		112.49 ²⁵	
108.37 ⁵	108.61 ⁶		109.70 ²⁵	
109.23 ²	106.15 ⁶	103.73 ¹³	105.70 ²⁵	
110.23 ¹	113.46 ⁹	114.08 ¹³	114.15 ²⁰	
110.45 ⁴	122.02 ¹²	122.14 ¹²	121.12 ²²	
122.87 ⁴	124.27 ¹²	124.28 ¹⁶	124.30 ²⁵	
121.25 ²	122.25 ¹¹	122.30 ¹⁵		
				BM
			122.68 ¹⁶	123.22 ²⁶
				El. 119.97
				25
				124.10
				25
				121.90
				25
				121.50
				25
				120.93
				22
				121.60
				25
				121.55
				Res.

92

4

Sta	A	B	C	D	E
19+25					
19+50					
20+00		20 114.68	16 115.81	6 116.45	116.96
20+40					
20+45					
20+55	7LS 107.10	9 114.43			4 115.35
21+00	26 116.15		17 115.70	7 114.93	115.00
21+60	Drive N				
21+60	"	5			
21+60	Bonn 100'S				
22+00	20 118.29	16 118.40	13 117.80	9 117.49	118.40
22+08					
23+00	20 117.40	16 117.46	11 117.66	7 117.76	118.30
24+00	28 118.55	15 118.50	11 117.90	8 118.10	118.63
25+00	20 118.64	16 118.56	10 116.83	117.15	117.54
25+26					117.54
25+32					117.54
26+00	20 117.73	13 117.39	8 117.15	4 117.62	118.06
26+23	ER of W				
27+00	20 118.10	16 118.05	11 117.72	6 117.95	118.40
28+00	20 119.40	15 119.37	10 118.99	7 119.07	119.40
29+00	20 118.35	15 118.37	11 118.51	6 118.95	119.31
29+73.32	20 118.35	15 118.46	11 118.55	6 118.52	119.07
30+54.8	10 119.27	20 118.95	12 118.21	5 118.50	118.70
31+35	20 116.55	15 116.70	11 116.74	6 117.14	117.65

PI 118.70

93

95

F	G	H	I	J
6 116.69	15 117.10		22 117.55	
5 114.75	13 113.60	9 114.60	FLN 107.10	
		19 114.00	113.80	
7 117.06	10 117.67	15 117.90	20 117.50	
7 117.16	11 117.15	16 117.29	20 117.16	
5 117.55	10 117.46	16 118.79	20 118.75	
5 117.13	9 116.95	13 117.39	20 116.95	
6 117.20	11 117.29	20 117.22	BM EI	
9 117.77	12 117.37	15 117.86	20 117.51	ConStag
6 118.50	10 118.33	15 119.25	20 119.31	Sta
6 118.01	10 118.33	15 118.96	20 118.61	32+3076
7 118.57	11 118.37	15 118.34	20 118.03	
10 118.72	20 118.15			
6 117.17	10 116.83	15 116.90	20 116.55	

92

94

Sta

19+25 Shed 100' S
 19+50 Arbuckle Res 70 S
 20+00
 20+40 Shed 80 S
 20+45 Fence S
 20+55 Brick Masonry Culvert
 21+00 36" Circular Waterway
 21+60 18" Rdway Flow N
 21+60 5' Row New Culvert 15° N.W.
 21+60
 22+00
 22+08 Prop Line N + S
 23+00
 24+00
 24+50 RR R of W 35° NW
 With CL Drives N+S
 W of RR Fence
 25+26 W Rail
 25+32 E Rail
 26+00
 26+23
 27+00
 28+00
 29+00
 29+13.32
 30+54.8
 31+35

FNE

FS &

95

16 N 22 S

16 19

16 15.5

16 15

16 15

15 16

Sto 25+00 to 25+35 / 16 15

24" CI Culvert 25'

Lining

15 15

15 15

15 15

15 15

Sta	A	B	C	D	E
32+30 ²⁰	116.50	116.42	5	116.40	
32+55.26 ²⁰	115.85	116.04	10	117.37	117.87
33+00 ²⁰	116.20	116.67	10	117.40	117.79
34+00 ²⁰	117.50	118.00	10	117.42	118.09
34+50	Stromeyer Res 200				
35+00 ²⁰	119.10	119.75	10	119.20	119.32
35+70	Fence S				
36+00 ²⁰	119.93	120.29	10	120.29	120.33
37+00 ²⁰	118.99	119.59	10	119.75	119.93
38+00 ²⁰	118.55	118.80	10	118.95	119.23
38+12	Fence N				
39+00 ²⁰	117.45	118.23	10	118.19	118.42
40+00 ²⁰	117.15	117.85	10	117.95	118.30
41+00 ²⁰	117.90	118.11	10	118.34	118.36
41+85	Fence S				
42+00 ²⁰	117.30	117.60	10	117.63	118.09
43+00 ²⁰	117.60	117.90	10	118.02	118.25
44+00 ²⁰	117.65	117.75	10	117.71	117.92
45+00 ²⁰	117.66	117.55	10	117.50	118.04
46+00 ²⁰	118.90	118.90	10	118.85	118.90
47+00 ²⁰	119.50	119.50	10	119.65	119.74
48+00 ²⁰	119.55	119.35	10	119.27	119.52
48+83	Fence N + 86 Fence S				
49	118.38	118.60	10	118.52	118.67
49-15	Res 80 S				
49-44	Fence S + 54 E Drive S				

7	6	5	4
117.30	117.57	117.31	
116.91	115.93	115.80	115.94
117.02	116.11	116.20	115.50
115.21	115.12	115.09	
5' Knowy Sta 346	35' Fence 40'S		
119.12	118.69	119.19	119.00
119.90	119.05	119.84	119.79
119.49	118.65	119.42	119.35
118.85	118.22	118.75	118.46
118.01	117.46	118.15	118.06
117.55	117.39	117.89	117.86
117.85	117.45	117.99	117.95
117.60	117.12	117.85	117.79
117.90	117.50	118.34	118.50
117.50	117.36	117.56	117.47
117.53	117.30	117.84	117.72
118.70	118.26	118.70	118.45
119.40	119.05	119.20	119.30
119.22	118.39	119.00	118.90
118.30	117.77	118.53	118.50
4 A.S.			

5+0
 32+30 Fence S
 32+85.2
 33+0 34+10 Fences
 34+0 Drive S
 34+5 34+60 Barn 300' S
 35+0 Fence S
 35+7
 36+0
 37+00
 38+00
 38+10
 39+00
 40+00
 41+00
 41+80
 42+00
 43+00 43+85 Fence N
 44+00
 45+00
 46+00
 47+00
 48+00
 48+80
 49

FNE 75 E

100	8.81	15.5	10	F	E	F	10	15.5	101	103
Sta	A	B	C	D	E	F	G	H	I	BM
50+00	117.76	117.80	117.13	118.30	118.45	117.92	117.45	117.71	117.25	E1
51+00	118.67	118.70	118.06	118.50	118.65	118.30	117.84	118.50	118.10	123.48
52+00	119.10	119.10	118.19	118.65	118.72	118.42	118.10	118.45	118.00	Low Pk 3
53+00	118.45	118.41	117.99	118.35	118.45	118.50	118.45	118.40	118.20	N. Side
54+00	118.60	118.75	118.09	119.00	119.05	118.80	118.40	119.35	118.67	Sta
55+00	119.50	119.70	118.83	119.83	119.80	119.32	118.57	119.56	119.39	53+75
56+00	119.80	119.04	118.37	119.19	119.46	119.29	118.09	118.69	118.26	
57+00	119.51	119.63	118.93	119.70	119.70	119.80	118.73	119.20	119.02	
58+00	119.20	119.30	118.90	119.70	119.80	119.40	118.70	119.22	118.45	
58+24	Fence S									
59+00	118.80	118.90	118.50	119.30	119.48	119.40	119.10	119.16	118.90	
59+05	Drive & Res 600'S									
60+00	118.60	118.70	118.35	119.15	119.35	119.41	118.55	119.05	118.85	
61+00	119.30	119.45	119.08	119.63	119.75	119.78	119.20	119.60	119.10	
61+10	Barrn 600'S									
62+00	119.95	120.19	119.65	120.30	120.25	120.09	119.95	120.50	120.39	
62+60	Fence S									
63+00	120.45	120.06	120.60	121.35	121.54	121.43	120.63	121.25	121.21	
64+00	119.56	119.57	118.86	119.67	119.74	119.69	118.91	118.51	119.25	
65+00	118.43	118.51	117.76	118.62	118.91	118.64	117.76	118.30	118.10	
65+84	Fence S									
66+00	117.72	118.10	117.25	118.05	118.35	118.05	117.05	117.72	117.42	
67+00	117.40	119.80	116.90	117.56	117.70	117.42	116.52	117.15	116.96	
68+00	116.55	116.70	115.95	116.65	116.82	116.55	115.77	116.50	116.30	
69+00	115.92	115.15	116.00	116.05	116.15	115.25	115.25	115.90	115.55	

100

Sta

102

50+00

51+00

52+00

53+00

54+00

55+00

56+00

57+00

58+00

58+24

59+00

59+05

60+00

61+00

61+10

62+00

62+60

63+00

64+00

65+00

65+84

66+00

67+00

68+00

69+00

52+18 Prop Line S

53+75 FN

Top 8" Tile Sta 52+10 - 13'S &

104.09

Crosses & Sta 52+18

103

104
579

2 15 10 7
A B C D E

70+00	114.95	115.15	114.55	115.65	115.67
71+00	114.90	115.32	114.51	115.48	115.65
71+83.5	116.33	116.57	116.03		116.40
72+40	116.23	116.65	116.05	116.70	116.73
73+00	115.34	115.55	115.10	115.79	115.80
74+00	114.21	114.45	114.00	115.06	114.94
75+00	113.55	113.95	112.95	114.00	113.85
76+00	112.35	112.75	112.35	113.19	112.82
77+00	113.75	112.50	112.13	113.32	113.51
78+00	114.00	114.15	113.55	114.55	114.57
78+50	Fence E				
79+00	114.32	114.56	113.90	114.87	114.95
79+82	114.58	114.56			115.00
80+00	Empty House 70 N				
80+36.49	113.85	113.50	112.95	114.05	114.05
80+40	Fence N				
81+00	112.90	113.00	112.25	113.46	113.45
82+00	111.75	111.80	110.89	111.57	112.00
83+00	111.47	111.59	110.60	111.47	111.67
84+00	110.55	110.50	109.67	110.75	110.82
85+00	109.80	109.67	109.02	109.72	109.40
86+00	109.90	109.70	109.50	109.92	110.05
87+00	110.83	111.10	110.77	111.55	111.55
88+00	110.25	111.12	109.90	110.95	110.95
89+00	110.37	110.35	109.67	110.40	110.37

7 10 15 20
F G H I BM

105 107

115.75	114.55	115.12	114.90	E/116.57
115.75	114.79	115.62	115.51	Con Stone
116.09	116.05			St 471
				+85.5
116.74	116.09	117.07	117.02	
115.87	115.40	116.20	115.15	
115.09	114.26	115.10	115.25	
114.00	113.40	114.72	114.60	
113.22	112.25	113.08	112.74	
113.40	112.10	113.10	113.05	
114.50	114.30	114.55	114.40	
				BM
114.73	113.79	114.76	114.75	114.49
113.92	114.50	114.49		Con Stone
				St 479
				82
113.60	113.05	113.55	113.35	
113.06	113.00	113.30	113.15	
111.45	110.89	111.60	111.43	
111.35	110.63	111.07	110.55	
109.59	110.22	110.90	110.70	
109.65	109.42	109.55	109.46	106.96
109.90	109.25	109.85	109.77	
111.25	109.75	110.90	110.70	
110.57	109.63	110.35	110.45	
110.25	109.53	110.15	110.00	

104

577

70+00

71+00

71+83.5

72+40

73+00

74+00

75+00

76+00

77+00

78+00

78+50

79+00

79+82

80+00

80+36.4

80+40

81+00

82+00

83+00

84+00

85+00

86+00

87+00

88+00

89+00

106

70+43

Low place in
Rd El 115.10 \pm

Fence N 71+90 Lane N

76+00 - 10" Anmco Regd

Fence S 79+87 Drives also

Drives S 5' W 79+82

Rail Fence S

Low pt 4" Tile Crosses Road 45°

Flow S. 10" Anmco Regd

86+00 Drive N 86+05 F. N

107

10" Anmco Regd

El Top 4" Tile Sta 85+00 F. N \pm 106.96

108	20	15	10	6	2	6	10	15	20	109	111
Sta	A	B	C	D	E	F	G	H	I		
90+10	110.45	110.45	109.90	110.30	110.45	110.22	109.70	110.13	109.93		
91+10	110.85	110.83	109.90	110.33	110.65	110.65	109.73	110.28	110.20	Stone	
92+00	110.09	109.95	109.55	109.95	110.05	110.19	109.50	109.87	109.75	92+65	
92+65	110.58	110.21	110.09	110.16	110.16			110.35	110.45	110.58	
93+1949	110.15	110.33	109.66	110.35	110.50	110.43	109.60	109.97	109.80		
94+00	110.63	111.00	110.13	110.75	110.70	110.66	109.82	110.90	110.70		
95+00	111.40	111.76	110.85	111.35	111.52	111.45	110.35	111.30	111.30		
96+00	111.00	110.69	110.00	110.60	110.56	110.60	109.80	110.60	110.60		
97+00	110.00	110.12	109.40	109.80	109.86	110.10	109.52	110.37	110.21		
98+00	108.95	109.03	108.60	108.80	108.89	108.79	108.57	109.10	109.60		
98+68	108.26		108.03		108.32				108.40		

150' S. + Sta 98+68

Top 14" Tile Crossing Road from
E under Culvert. 103.23

6" Tile on W side from 14" Tile
to N side of Road Sta 92+55
Then W on N side to Sta. 89+70
7" S of fence 9' N & E. Top 107.72

N End
ERail
110.30

108

579

90+10

91+10

92+10

92+65

93+1949

94+00

95+00

96+00

97+00

98+00

98+68

150 S.

Topk

E und

t. N

Then

7" S.

110

92+60 Drive N
Fence N+E

~~92+70~~

97+10 Rail 7W

98+20 Rail 7W

98+68 Drive W. + Road E

99+00 Bonn. 70 W

111

John Scott S.E. Corn on Ground

100' SW. of 0'

of 0'

of 0

of 0

0' W. 0

0

"

"

"

"

"

" "

" "

At P. Fence 200' S of N. line

and 200' S N. line

150' S N. Line

St. in W. Fence 150' S N. Line
on N line 150' W. of 0.

114

114+55

114

113

112

111

110

109

108

107

106

105

104

103

102

101

100

99

98

97+55

96

95

94

93

91

90+03

114+74 I.P. = E end of Road 117

20

21'

114+54

E end of Road

20.6'

97+42.6 PT $\Delta = 120^{\circ}45'$

90+75.2 PI $8''$ maple N 40° W 31.7'

T 60.1 D 10° - E 3.56'

L 4121.5' $8''$ $240'$

30.4'

1245

$10 \overline{) 285}$

36'

90+49 - $\Delta 30^{\circ}40'$ D $4^{\circ}00'$

L 91.61 - T 45.82

PC - 90+03.18 PT = 90+94.75

E = .73

$8''$ Walnut. 1175 E 53'

Curve S 17'

89
88
87
86
85
84

C

8° 42.6' 144.5
144.5 1.44.5
10° 27' 30.29'
144.6 44.5
12011.5
144.6 0 13.5
1356 1 44.6
6058
6044
14042.3

C 37.2
D 144 1/2

73 + 60.8
Cor put E 15.4'
Cor " S 45 W 25'

3 8
2 10

8 297.7
37.2
85 + 17.8
82 + 57.8
250.00

16" Elm N 45 W 37.5'
10" Walnut N 45 E 32.4'

86 + 17.5 Δ 40° 14' D = 480'
L 105.75 - T 52.91
E = 0.98 - PT 87 + 29.4
PC 86 + 24.6
529
867 7.5 PI

83 + 80.6 - Δ 27° 58'
D = 10° - L 297.7'
T = 142.8' - E = 17.5'
PC 82 + 57.8 - PT 85 + 17.5
16" Elm N 35 W 20'
M. B. S 45° W 19'

80 + 60 Δ 44° 15'
D = 45° L = 98.33'
T = 51.77 PC 84 + 09.1
E = 10.12 PT 81 + 07.4

Std	A	B	C	D	E
0+00	98.25	97.16	98.61	95.67	98.58
0+64.6	98.20			95.33	98.86
1+10	97.86	98.40	98.26	97.80	97.43
2+00	96.46	97.12	97.05	97.18	97.25
3+00	96.65	97.43	96.00	96.56	97.00
4+00	93.77	94.35	93.15	93.33	93.30
5+00	90.60	91.00	91.00	91.62	91.75
6+00	88.65	90.47	89.06	89.75	90.60
7+00	91.30	91.45	90.77	91.06	91.16
8+00	91.95	91.12	88.29	88.33	88.78
9+00	82.76	82.95	83.15	84.95	85.23
10+00	83.20	83.27	83.80	84.90	85.19
11+00	83.10	83.09	82.86	84.26	84.40
10+37.1			78.30	85.10	85.37
12+00	83.30	83.13	82.21	83.26	83.67
13+00	83.60	83.35	82.17	83.49	84.15
14+00	84.41	83.20	83.05	84.00	84.50
15+00	84.00	83.56	83.15	84.40	84.63
16+00	85.40	84.30	83.50	84.60	84.90
17+00	84.05	84.25	83.35	84.30	84.05
18+00	84.35	84.32	83.69	83.95	83.96
19+00	85.50	85.34	83.76	84.15	84.27
20+00	86.00	85.21	83.55	84.22	84.27
21+00	86.20	86.05	84.75	84.70	84.27
21+27.1			83.50	84.55	84.50

H. C Jordan Road				Eg. Tixen		Bench Marks	
F	G	H	I				
98.46	97.47	98.06	98.31			E. 100.00	
98.43			98.27			Con Stone	
97.92	97.92	98.34	98.23			100' W of 2	
98.28	98.07	97.22	97.10			E. 97.35	
96.95	96.28	98.23	98.18				
93.40	93.25	95.05	94.86				
91.85	91.25	92.90	92.30				
91.03	91.05	91.35	91.50			15' Armeo	
91.66	91.96	92.15	92.15			Road	
88.89	84.70	93.26	93.50			E. End S. Rail	
85.20	84.71		84.16			87.85	
85.06		82.85	82.75			E. End N Rail	
84.28	83.57	79.75	78.37			87.91	
85.00	77.00					W. End S Rail	
82.05	82.27	83.16	77.27			86.75	
80.85	83.60	80.50	78.30			W. End N Rail	
84.70	83.35	81.18	78.40				
84.35	83.75	80.00	78.00				
84.60	83.90	84.60	78.80				
84.00	83.85	81.00	79.50				
84.00	83.20	82.20	79.80				
84.00	83.60		79.73				
84.00	84.00	82.20	80.30				
81.50	84.00	83.84	80.70				

	A	B	C	D	E
22	85.55	85.40	83.90	84.67	85.05
√ 22+54			82.75	84.01	84.41
23+00	86.70	86.28	84.69	85.30	85.62
24+00	87.10	86.87	84.95	85.59	85.96
25+00	87.18	86.40	85.76	86.30	86.60
26+00	88.42	88.52	87.22	87.60	87.70
27+00	89.87	90.06	88.00	88.90	88.90
√ 27+24		92.26		90.71	90.76
√ 27+39		89.66			90.20
28+00	90.53	90.56	89.01	89.72	90.19
29+00	89.33	89.32	87.45	88.95	89.10
30+00	87.65	88.05	86.30	88.10	88.52
31+00	87.72	87.86	86.33	88.55	88.55
32+00	87.50	86.10	87.55	90.15	90.16
√ 32+10		53.77	90.37		90.50
32+30	87.80	87.70	87.69	89.50	90.12
33+00	87.58	88.05	88.06	89.40	89.60
34+00	90.50	89.85	89.06	89.77	90.03
35+00	91.20	90.78	90.20	91.20	91.63
36+00	91.50	91.97	90.56	92.00	92.25
37+00	93.20	93.08	91.87	92.70	93.14
38+00	94.90	95.10	93.10	94.00	94.35
39+00	95.40	96.05	94.85	95.90	96.35
40+00	95.35	95.68	94.85	96.05	96.42
41+00	95.60	95.76	94.70	95.89	96.17

	F	G	H	I	Bench Marks
24	84.27	84.20	83.27	85.27	
24.20	83.75				18' x 12' Area
25	85.16	84.90	83.15	82.9	
25.10	85.10	85.25	85.25	80.70	Dist. 25.100
26	86.55	85.70	86.10	86.15	87.05
27	87.40	87.44	87.56	87.77	
28	88.65	88.79	88.83	88.90	
29	90.20	89.00			
30	89.85	88.72	90.00	90.06	
31	88.95	87.94	89.45	89.45	
32	88.15	87.62	87.89	87.50	SW. Wing
33	88.51	87.43	88.15	88.15	at end of
34	90.15	84.73	84.59		Rail.
35		90.50	83.70		90.15
36	89.89	87.36	88.36	88.70	
37	89.30	87.85	88.05	87.85	
38	89.70	88.75	91.10	91.10	
39	91.30	90.10	90.55	91.00	
40	92.40	90.95	92.00	92.00	
41	92.90	92.25	94.05	94.60	
42	94.15	93.40	95.20	95.50	
43	96.10	95.35	96.00	96.95	
44	96.10	95.17	96.80	97.00	
45	95.82	94.73	95.06	95.20	

Sta	A	B	C	D	E
42+00	96.05	96.13	94.95	96.09	96.47
43+00	96.25	96.20	95.15	96.15	96.53
44+00	95.80	95.90	94.90	95.50	95.50
√44+42			93.60	94.60	95.55
45+00	95.45	95.55	94.30	95.22	95.76
46+00	96.70	96.50	95.50	96.30	96.35
47+00	97.15	97.25	96.25	97.30	97.60
48+00	98.15	98.05	96.90	98.15	98.73
49+00	97.35	97.38	96.05	97.18	97.55
50+00	95.95	96.2	95.10	96.20	96.63
√50+98		94.60	95.80		96.46
51+00	94.95	95.30	95.15	96.22	96.43
52+00	96.30	96.22	95.33	96.44	96.86
53+00	96.20	96.40	95.55	96.73	96.82
54+00	95.80	96.63	96.00	96.96	97.40
55+00	97.30	97.50	96.42	97.70	97.96
56+00	97.00	97.28	96.86	97.66	98.03
57+00	98.75	98.49	98.05	98.47	98.62
58+00	98.93	98.99	97.40	99.20	99.42
59+00	99.50	99.46	97.78	99.78	99.82
60+00	98.00	98.75	97.94	99.23	99.16
61+00	98.15	98.70	98.20	99.10	99.20
62+00	98.40	99.00	98.53	99.15	99.32
63+00	99.72	99.30	98.80	99.61	99.42
√63+81		98.16		100.26	100.60

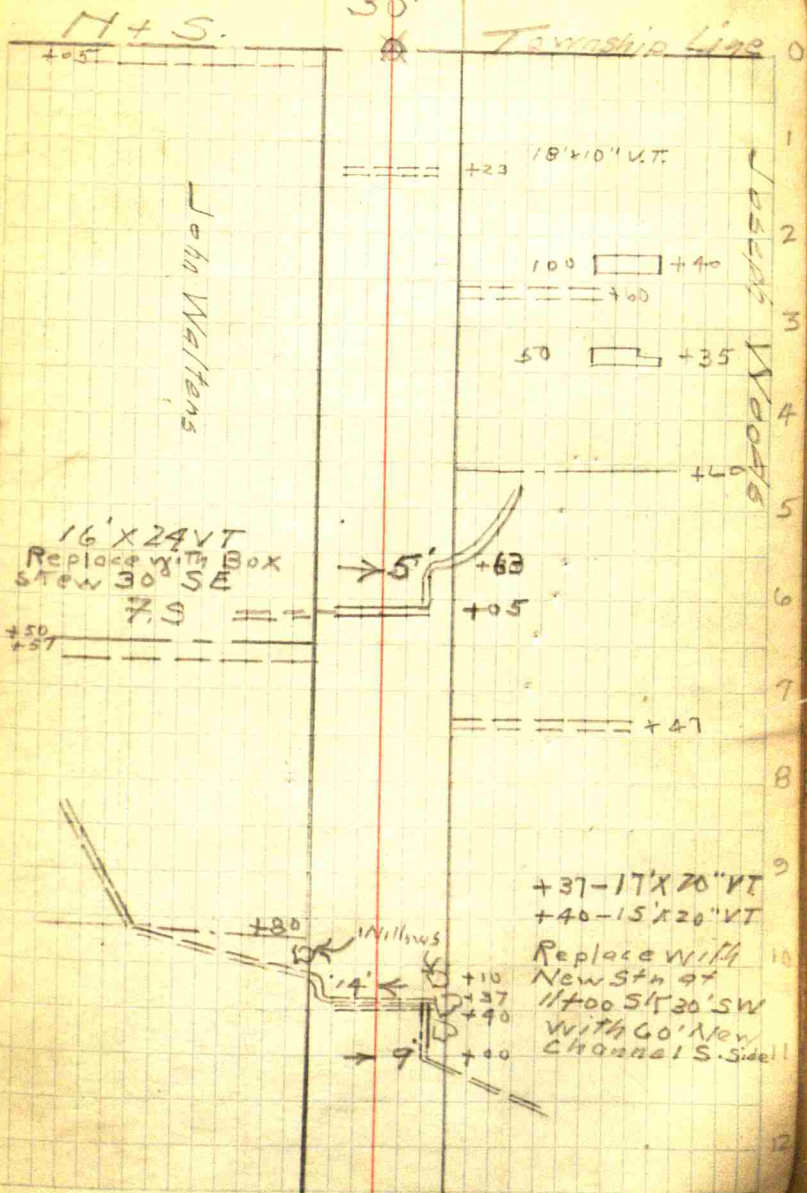
7	6	H	I	
94.32	95.00	96.12	96.37	
96.25	95.30	95.40	94.05	
95.30	94.37	95.60	95.68	
94.37	94.39	93.85		19' x 12" A
95.36	94.32	94.96	94.95	
96.33	95.25	96.48	96.42	
97.38	96.38	97.10	97.20	
98.26	96.95	97.85	97.75	
97.29	96.26	97.38	97.16	
96.33	95.33	96.53	96.52	
	95.85	94.90		18' x 12" A
96.15	95.10	95.52	95.50	
96.62	95.50	96.35	96.43	
96.75	96.04	97.07	97.20	
97.20	96.30	97.00	96.90	State Sta 55+00
97.70	96.70	97.86	97.85	98.00
97.88	97.06	97.36	97.22	E. Gate Post
98.36	97.35	98.26	98.19	Sta 55+86
99.32	97.99	98.68	98.65	102.44
99.47	98.30	99.70	99.58	
98.95	98.16	98.77	98.50	
99.05	98.15	98.90	98.60	
99.35	98.75	99.10	99.00	
99.36	99.40	100.15	100.05	
	100.10	98.10		

Sta	A	B	C	D	E
64+00	²⁰ 99.31	¹⁵ 99.62	¹³ 99.22	⁵ 100.35	100.39
65+00	²⁰ 101.20	¹⁵ 101.06	¹¹ 99.80	⁶ 100.10	101.35
66+00	²⁰ 101.26	¹⁵ 101.59	⁷ 100.75	⁸ 101.74	102.70
67+00	³⁵ 102.95	²² 102.90	¹³ 102.90	⁵ 102.70	102.96
			100' E		104.25

Top 12" Tile N. Side Road
 Sta 64+00 96.60
 at point where
 some Crosses Road to S.E.

	F	G	H	I	Bench Marks
	⁶ 100.35	¹² 99.10	¹⁵ 99.87	²² 99.42	
	⁷ 100.98	¹² 99.50	¹⁵ 100.47	²⁰ 100.85	Headch 10'
	⁷ 101.63	¹¹ 100.82	¹⁵ 101.80	²⁰ 103.00	Annico under
		¹³ 103.66		³⁵ 103.70	N+S Road at Sta 67+00
					103.60

Sta	Mark	Def	Bear	Witnesses
0+00	Stone			Con. Post S 15.5 " " N 15.5

Maadon
Road W.
30'

Roads
 +44 4 PL 12

Sarah McCain

+15 = = =
 +79 - - -

PL 1 +44

400 □ +20
 100 □ +53

== = +16
 == = +38

Dolly Thompson

56

12
 13
 14
 15
 16
 17
 18
 19
 20
 21
 22
 23
 24

134

Sta Mark Def Bean Witnesses

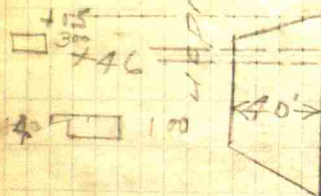
26+92 Stake 00°00'

Cement Post
514.6
Stone Not
Found

135

R. Line

Rt +92 Road N



Melvin S. Gibbs

136

Sta. Mark Def

Witnesses

40+42 Stone 60'9"

Con Post N 4.5
" " S 121

66.56

40.42

26.14

80.68

40.42

40.26

39.60

4.67

53.92

66
300
26739
300
3004042
2692
1350

137

+42 P. Line

+60 P. Line

+42 P. Line

Dan Jordan

Abraham Hoodley

No Fence

+57

+27

52

37

38

39

40

41

42

43

44

45

46

47

48

49

50

51

52

53

54

55

56

57

58

59

60

61

62

63

64

65

66

67

68

69

70

71

72

73

74

75

76

77

78

79

80

36" W Chert $N 75^{\circ} E$ 81'10" Sycamore $N 75^{\circ} W$ 23.8'61 I.P. $R 4^{\circ} 30'$ $D = 4$ $\Delta 4^{\circ} 30'$ $L \frac{4.5}{4} = 112.5$ $T \frac{2.5}{4} = 56.3$ $E x \frac{4.4}{4} = 1.1$

P.O. Sta 9 - 60 + 43.7

PT " - 61 + 56.2



+05

+07

+30

16" x 14" Boiler
plate

+92 Sea Line

+09

24" x 18" V.T.

+79

Sta Mark Def

64+65 I.P. $\Delta 7^{\circ}15'$ 6" Apple $N 45^{\circ} E$

35' K

9" Sycamore $S 85^{\circ} W$

70' K

$$\Delta 7^{\circ}15'$$

$$D = 7^{\circ}$$

$$L = \frac{7.25}{5} = 103.6$$

$$T = \frac{363}{7} = 51.85$$

$$Ex = \frac{11.5}{7} = 1.64$$

$$PL = 64 + 13.2$$

$$PT = 65 + 16.8$$

71+50

P. 3°15'

10" Elm $S 45^{\circ} E$ 31.872+00 I.P. $R. 3^{\circ}52'$ 8" Sycamore $S 45^{\circ} W$ 32'

72+50

 $D = 4^{\circ}$

$$L = \frac{3866}{4} = 96.65$$

PL - 71 + 51.57

$$T = \frac{193.7}{4} = 48.43$$

PT - 72 + 48.22

$$Ext = \frac{3.3}{4} = 0.825$$

+15 PL

28' \square + 95

No Fence

70' \square + 56

+05

Sewer + Inlet
Regd

Sta Mark Def

Cor post 545 W
 22'
 12" Buckeye N 05° E
 15'

80+683 I.P. R 89° 54'

D = 45°

$$\text{EXT} = \frac{2373.4}{45} = 52.74 = 52.56$$

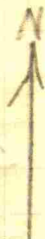
$$\text{Tan} = \frac{5730}{45} = 127.33 = 127.11$$

$$L = 200 = 199.9$$

P.C. Sta 79+41.2

P.T. Sta 81+41.2

+88



30' Rd N
 SE Iron Bn
 100' M.

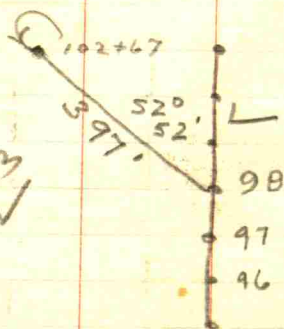
PLE

74
75
76
77
78
79
80
81
82
83
84
85
86

114

Sta Mark Def

$$\begin{array}{r} 85-17.5 \\ 83806 \\ \hline 45-1.369 \\ 45-17.5 \\ \hline 22600 \\ \hline 20 \end{array}$$



99+00 1P L 32°47'
D = 45'

$$Ext = \frac{242.7}{45} = 5.4$$

$$Tan = \frac{1685.5}{45} = 37.56$$

$$L = \frac{32.7833}{45} = 72.85$$

P.C. Sta 98+62.44

P.T. Sta 99+35.29

Nend 99+49.79
 Bn Floor 99+59.7

145

+81

18' X 18" UT

+68

+27

send Br. Floor

146

Send W Rail 31
 " " E R 41.5

99+00

42" Walnut S45E
 22'
 Head W Rail Curve

99+94.7 L56°05' I.P. S05°E 47.5'

$$D = 88^\circ$$

$$\tan = \frac{3052}{88} = 34.7$$

$$Ex \frac{762.2}{88} = 8.66$$

$$L = \frac{56.0833}{88} \times 100 = 63.7'$$

$$P.C. \quad 99+60$$

$$PT \quad \quad \quad 63.7$$

$$100+23.7$$

101+64 I.P. R30°43'

$$D = 42^\circ$$

$$Ext \frac{212.2}{42} = \cancel{42} = 50.2'$$

$$\tan \frac{1573.8}{42} = 37.4$$

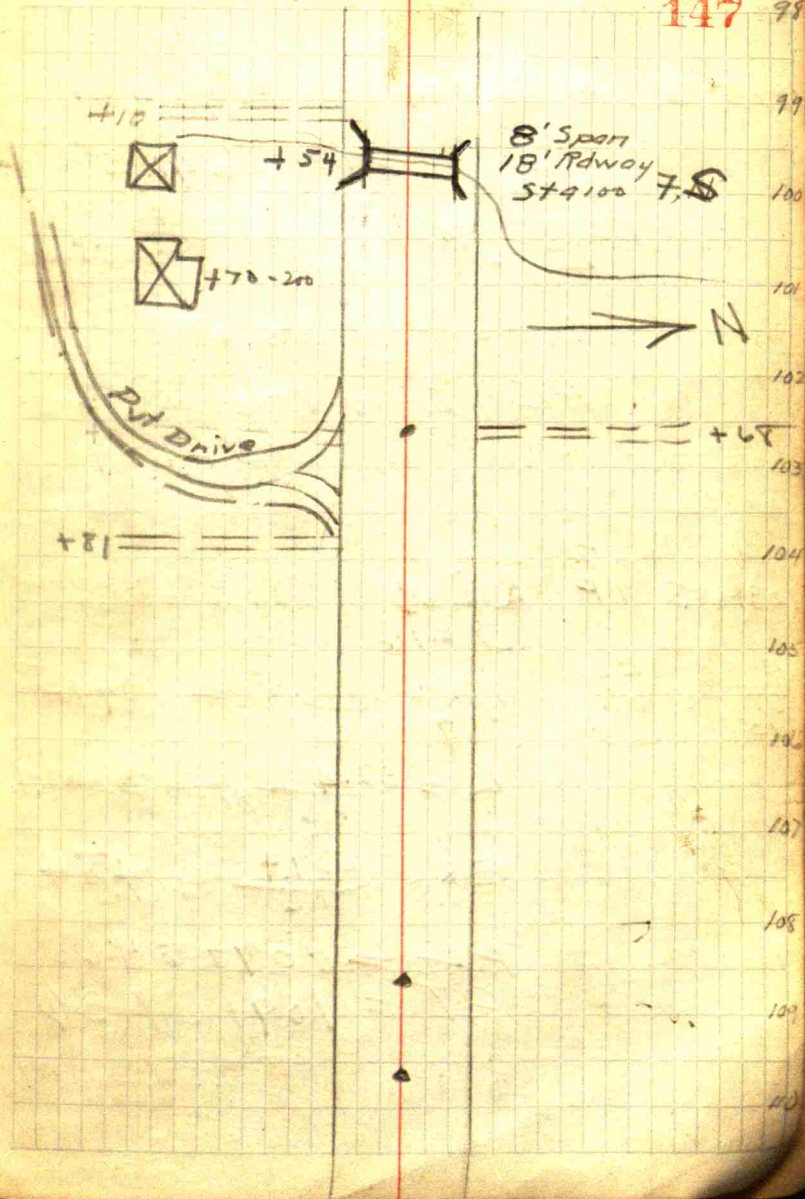
$$L = \frac{30.7167}{42} = 73.26$$

$$P.C. \quad 101+26.6$$

$$PT \quad 101+99.86$$

Can Post N10E10
 8' Cherry S 37'

147



Sta MK

Def

E Gate Post N 15'
Mail Box S 10 W 11.5'

102+67.26 1 P L 1704'

D = 20°

$$\tan = \frac{859.8}{20} = 41.5$$

$$L = \frac{17,066.7}{20} \times 100 = 85.33$$

$$Ext = \frac{67.2}{20} = 3.21$$

P.C. Sta 102+25.76

P.T. " 103+11.09

108+68.8 1 P R 32.20'

D = 16

Coh Post E 33'
Stake on Radius
15'

$$\tan = \frac{1666.5}{16} = 104.15$$

$$L = \frac{32,433.2}{16} \times 100 = 202.71$$

$$Ex = \frac{237.4}{16} = 14.84$$

P.C. = 107+64.65

P.T. = 109+67.36

Sta 115 is 70'
Not E+W fence114+53 E
intersects N+S
line fenceNot Con Stone
st116+62.8 PL E+W
Stone 176' NW of
Sta 116+62.8 PL
N116+40
Fences

John Hollingsworth

Ames M Ballow

110
111
112
113
114
115
116
117
118
119
120
121
122

150

Sta MK Def.

Con Post E32

111+122 I.P. $L=15^{\circ}20'$

$$D=10^{\circ} \quad \text{Tan} = \frac{771.3}{10} = 77.13$$

$$P.C. = 110+95.1$$

$$P.T. = 112+48.4 \quad \text{Ext} = \frac{51.7}{10} = 5.17$$

$$L = \frac{15.33}{10} = 153.3$$

8" 54c. N 70° E 27'
Stake 5 on Rod 10'

116+128 I.P. $L=32^{\circ}36'$

$$D=30^{\circ} \quad \text{Tan} = \frac{1675.5}{30} = 55.85$$

$$P.C. = 116+6.95 \quad \text{Ext} = \frac{240}{30} = 8.0$$

$$P.T. = 117+12.28$$

$$L = \frac{32.6}{30} = 105.33$$

Con Post E 15'
16" 54c. N 40° E 44.8

124+882 I.P. $R=36^{\circ}23'$

$$D=30^{\circ}$$

$$\text{Tan} = \frac{1883}{30} = 62.77$$

$$P.C. = 124+20.43$$

$$P.T. = 125+41.71$$

$$\text{Ext} = \frac{301.5}{30} = 10.05$$

$$L = \frac{36.3833}{30} = 121.28$$

151

Trees along
5 fence line
every 30' from
115 to 129

28' x 16"
Amco Regd

--- +100
to Pit.

+50

Pd Ret. Wall

+100

--- +25
From Sta 129
Creek Runs S 71° E 129

122

123

124

125

126

127

128

130

131

132

133

134

154

Sta MK Det

150+00 I.P.

R0°33' "

24" Maple S60W 15.5'

" N40W 25'

153-045 Stone

18" Maple N40W 25'

16" Walnut SW ^{40°} 26'

155

