

← A4 →

← LETTER →

102

FIELD NOTES

B T^p 15-A 2 W

Survey for Prokt + Casper
Aug 16 1913 - Pages 2-3-4-5

To determine the line
between N E 1/4 sec 28 and
NW 1/4 sec 27 T4 R5 W

Round stone at E 1/2 mi
and N E Cor. Sec 28
Starting at E 1/2 mi east
over 5-lhs and run
random diving stake
every 5 chains

- 5' set over west 5 + 5
- 10 11 + 5
- 15 17 + 5
- 20 23 + 5
- 25 29 + 5
- 30 34 + 5
- 35 40 + 5
- 40

40 + 18 intersected N line of

NW 1/4 sec 27 51 ch E of
NW Cor. West bush correctly
random line as shown above

40.18	46	107.145
	4018	
	5720	
	4018	
	18020	
	16072	
	19480	
.01145		.01145
35		30
5725		
3435		134350
40075		
01145		.01145
22		20
5725		22900
2290		.01145
28625		15
		37
		114
		17

CW McClain
Henry Corset and
Chairman Man
Arman Wells
Stone at NW Cor

4
 1 Stone
 Turkey oak ^{18'} N 70° E 42.06
 Cottonwood ^{24'} N 45° W 13.06
 West 1024.06

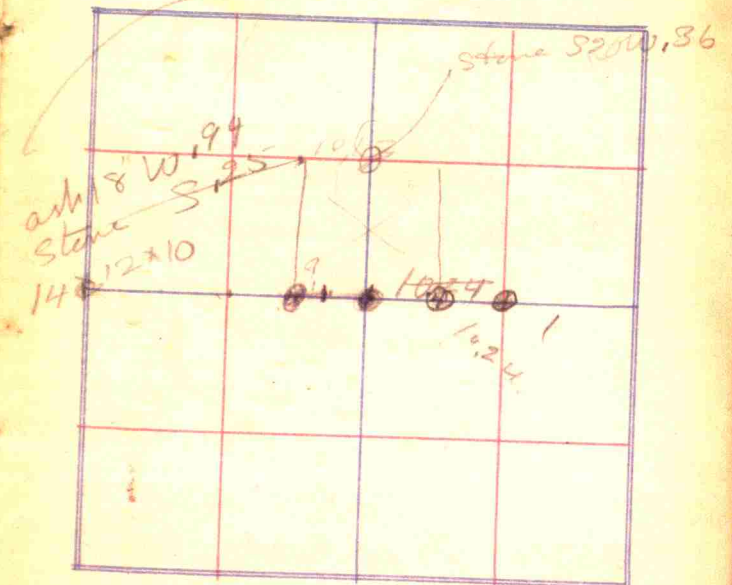
Stone
 20.48 no stone
~~31.02~~ Stone
 may be a corner
 #7.11 fence 47.36
 60.99 fence

10.24	60.99
10.24	20.48
20.48	40.51
	10.13
	20.48
10.24	30.61
81.92	30.72
	31.02
	30.61
	.41

Survey of Section Town

6099 Range

13.06
 55.52 witness rock



3 6099	20.33
20.33	10.24
4	30.57
7 8182	
20.33	

6

Survey in Plainfield

Start at NE cor K of P Alley
 Run east 450 loca for
 X on east go on 12.48 ch
 Look for stone at NE cor

Academy ground

60 west side lot 1 - Old 8
 120 east side alley
 135 west " "
 195 west edge lot 3 Old 8
 255 E side St Vin
 315 W " " "
 375 W " lot 1 Old 7
 435 E side alley
 450 NE cor K of P Alley
 490 NW " " "
 510 NW cor lot 3 Old 7
 " " " " " "
 516 NE cor Bank
 537 NW cor Bank

570 NW cor lot 4 Old 7

26 - 15 - 1 E

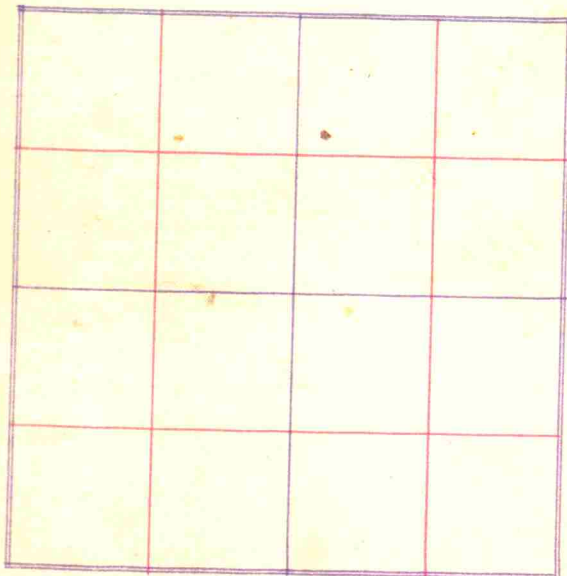
Arrive SE cor Old 1
 West 120 E side alley
 135 W side alley
 255 E side St
 315 W side St
 435 E side alley
 450 W side alley
 570 E side St
 630 W side St
 720 run from E side bank
 750 E side alley
 run from west side bank

- 12,480 3" east of w edge wall
 14½" flag like marks
 17½" = 0
 100' 14½" E side Mr Thomas lot
 120 16" series in concrete
 135 10½" end wall west side ally
 13' side house
 195 20" E side brick bldg
 255 24" E side brick St
 315 22" W side brick St
 375 20" W side brick bldg
 435 21" W side brick bldg
 450 21" E side 1/2 of P bldg
 490 22" W side 1/2 of P bldg
 516 9" E side Bank
 537 19½" W side Bank
 630 + 22" W side St

Survey of Section Town

20 Range

24



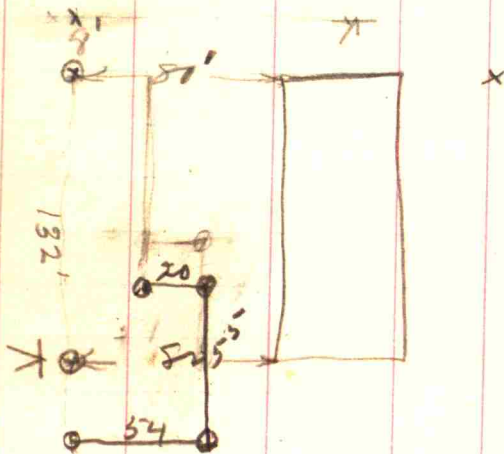
10

Regiment W side Haman's barn
 29' 8" E side

119 E side brick bldg
 178 4' W end brick Bldg
 ▽

79'
 78' 5"

11



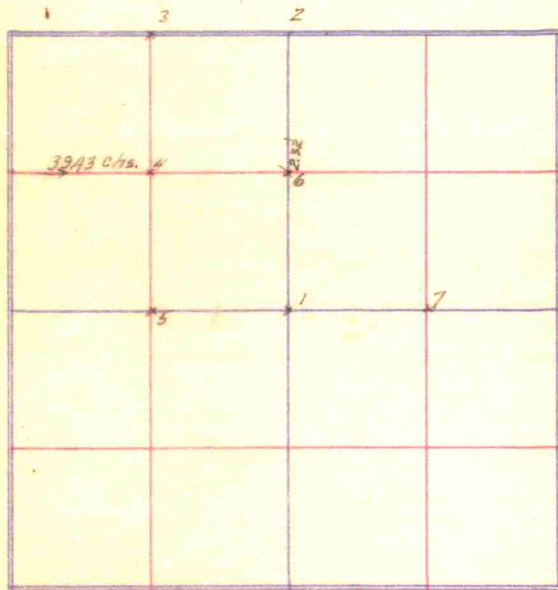
20

25	25
278	225
1723	1288
2322	1723

Survey of Section 23 Town 16

21

Range 2 W



1. Borch 20 S 60 E 37 1/2 - Borch 18 S 6 1/2 W 107
2. From old witness Borch 6 S 16 1/2 W 144
3. 5 1/2 from corner of R. A. Co. 1/4
3. 12 x 20 Pin Oak 20 S 62 1/2 E 58 - Borch 18 S 46 1/2 E 43
4. P. Oak 30 N. 63 1/2 E 57
5. Wood of flat 15 N 71 1/2 E 142 - Sugar 10 S 11 1/2 E 83
6. 12 x 27 Cherry 36 1/2 S W 78 1/2 - 18 S 15 W 206 1/2
7. Catalpa 45 1/2 S W 22 - Sugar 18 N 40 1/2 W 83
7. Borch 15 S 17 1/2 W 170
7. Ashory 20 S 22 1/2 W 15

Saved Hadley Bk. 75-290

Comm. at SW corner of NW⁴ of NW⁴ running
thence 39.43 ch. to SE. cor. of NE⁴ of NW⁴,
thence N 269 rods, thence W 5 rods, thence
N. 580 rods, thence W 440 rods, thence
N 9.20 rods, thence W 3.93 $\frac{1}{2}$ rods, thence
N 10 rods & 8" thence due W. 20, South
line of R.R., thence in S westerly direction
to W. line of section. - thence S 5215 chs.
to place of lg. except $\frac{1}{2}$ A for cemetery
containing 43.92 A.

Mary A. Conner Bk. 74-337

Pt. of NE⁴ of NW⁴, Bg. 19 63 rods S of N² mile
stone, thence W 13 $\frac{1}{2}$ rods, thence S 5 rods,
thence E. 13 $\frac{1}{2}$ rods, thence N 5 rods to place
of lg. containing 66 $\frac{2}{3}$ rods.

Pearson Bk. 73-471

Bg. 28 rods and 14 chs S of N² mile
stone, thence S 5 rods,
thence S. 16 rods, thence E 5 rods, thence
16 rods to place of lg. containing $\frac{1}{2}$ A.

Lester Hadley Bk. 99-417

Pt. of NE⁴ of NW⁴, Bg. 17 1365 rods
S of N² stone, thence W 13.33 $\frac{1}{2}$ rods,
thence S 6 rods, thence E. 13.33 $\frac{1}{2}$ rods
thence N 6 rods to place of lg. eastern to
contain 50 sq. rods more or less, except
right of way of 12' wide along N. side of
tract of cows required for a passage to the
Friend's Drive yard.

Meeting house lot (changed papers 1872)
of N² stone, thence S 230, thence W 235
thence N 231, thence S 232 to top of

Church W 230

224 1/4 1/4 Meridian N

26

$$\begin{array}{r} 222 \\ 240 \\ 2402 \end{array}$$

$$\begin{array}{r} 10.2 \\ 10.2 \\ 10.2 \end{array}$$

$$\begin{array}{r} 10.2 \\ 10.2 \\ 10.2 \end{array}$$

FB 2000

Coordinated on site by ...
 S line ...
 99.18 ...
 there W 39.18 ...
 and to N ...
 there a on and along ...
 M line ...
 corner ...
 and to SE ...
 there is on and along ...
 of ...
 place of ...

SS

...
 ...
 ...

32

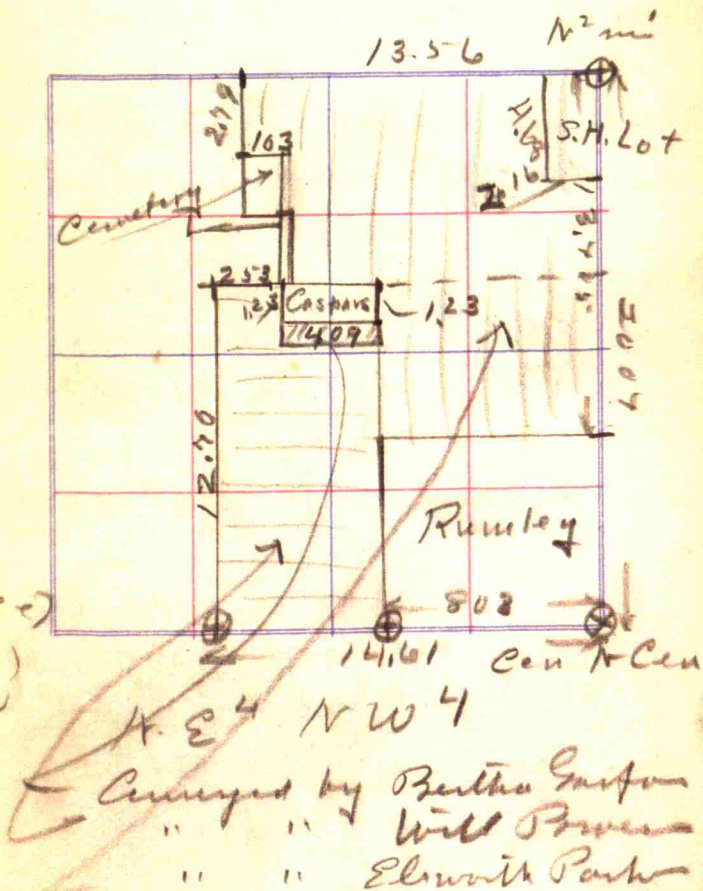
for Fritsche by
 W. Gamm for J. P. Johnson
 Purpose to get description
 of tract which was conveyed
 by 3 separate deeds

South 0 $\frac{1}{2}$ mi Sec 35 Stone
 13.705 Runley's N fence
 20.07 Cen N Cen Stone
 West 0 " "
 8.03 SW Cor Runley Stone
 14.61 SW Cor Fritsche Stone
 North 0 " "
 12.70 Corner (fence)
 East 0 " "
 2.16 West side Walnut Street
 2.53 NW Cor Gaspar's lot (fence)
 6.635 NE Cor Gaspar's lot (fence)
 South 0 " "
 1.23 SE Cor " (fence)

33

Survey of Section 35 Town 15 N

Range 2 W



34

West 0 S E Cor Gaspar's lot
4.09 SW Cor " (house)

North 0 " "

1.23 NW Cor Gaspar (fence)

3.86 S line Cemetery "

5.72 S line " "

East line cemetery continuous
with west side Walnut St.

Walnut St. said to be 30' wide

West 0 NE Cor Cemetery

1.03 84.04 beyond NW Cor

North 0 " "

2.53 South side Road

3.045 North " "

East 0 NW Cor Fritsche land

by large corner post

13.56 N 2 mi Sec 3.5-

Stone

35

School House to end
South from N 2 mi stone

4.68

width 8 + W 2.16

Tract is covered by
thin dead with reasonable
accuracy except about
cemetery.

Area 2 213 A

36

2009)	600	29.87
	4018	
	19820	
	18081	
	17390	
	16072	
	13150	

Survey for Christie Estate

To cut off 60 acres from
South end E² SW⁴ Sec 26
T¹⁵ N R 2 W

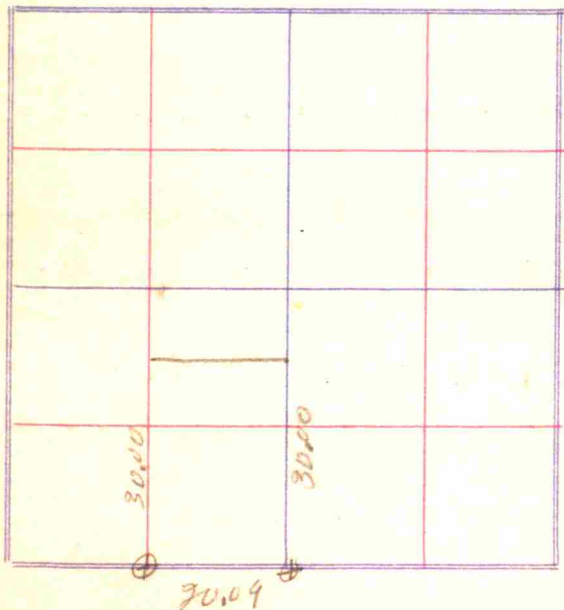
South end of half
quarter is by government
survey 19.97 wide, but
by actual measurement 20.09

Measured north 30.00 ch
by agreement and stated
a line across, the party
intending to set corner
posts, no stones were set.

37

Survey of Section 26 Town 15 N

Range 2 W



38

Sec 36 - TP 15 N R 2 W

Survey for Conrad West - and -

Beg. at Cen. Sec. 36

Thence E. on line 20.05
chains to Cen E. of Cen

Sec 36. Then S 9.975 ch

(set stone) Then W 20.05 ch.

(set stone) Then N 9.975 ch
to Beg. point. Cont. 20.00 A

The above ~~tract~~^{20 A} was
set off to _____ on N.
and the balance of
76. acre tract set off
to Conrad West on
S.

39

58

Beg. at SW cor. of
 Earnest Heavens 53 Acre
 tract. Thence E. 8.83 ch. to
 SE. cor. of E. Heavens. 53A.
 Then E. 2.74 ch. to S.W. cor.
 of 40 Acre Tract

Then N 19.98 ch. to HW cor. of
 40 A. Then E 6.09 to E line
 of Condelia Heavens 53A.
 N. 60.10 ch to Gen Rockville
 Road.

at Stone

Beg. 8.33 ch W. of E.
 Heavens N.W. cor. E 8.83 ch
 to E. Heavens NE cor. E.

Then E. 3.76 to corner on N
 between Mrs Hathaway and
 Mrs Shelton Then E 18.79
 ch. to Hathaway N.E. cor.
 old witness Standing

59

6x8x10

Stone on S. line Cor To
 Mrs Hathaway and Etha Shelton
 Stone W. on line 102 links
 Stone at N.W. cor 40 A
 6x8x10 — Stone E. 102 links

60 128-64

128-59

128-61

Q. 1 Heavin

pt NE⁴ + pt SE⁴ of sec 7

beg at pt on N line of sec 7

17.16 ch E of N² of sec 7

E 1.708 ch 560 ch to S line

NW⁴ SE⁴ of sec 7, W 1.708 ch

to pt 17.16 ch E of S line at

SW cor of NW⁴ of SE⁴ of sec 7

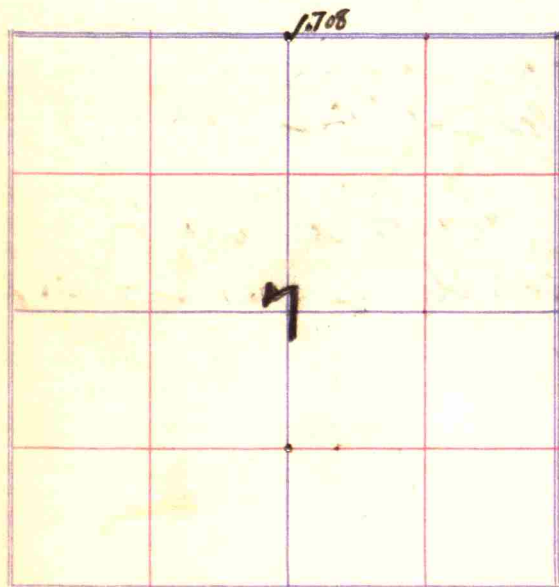
thence N 60 ch to beg.

10.25

Survey of Section _____ Town _____

61

Range _____



62

Eli's Shelter

N 42° W + N 52° W

Beg at shore on N line of NE⁴

20.92 ch E of NW corner

then of 540 ch to shore

W 102. the S 20 ch W 103

ch then N 60 ch E 2.03 ch.

to place of Beg. 10.25 A

Eli's Halibutway

540 ch E 5.125 ch

63

156

$60 \times 9.74 = 16.24$

$20.50 - 16.44 =$

4.06

4.06

$\frac{4.06}{40} = 1.015$

40

~~3.740~~
~~16.24~~

40) 4.06 (1.015
40
66

157

Survey of Section _____ Town _____

Range _____

