

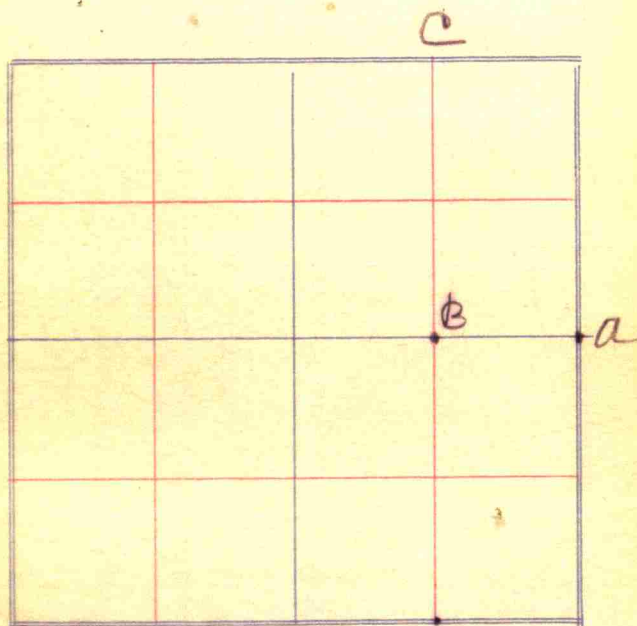
16-2W

**FIELD NOTES**



Survey of Section 23 Town 16

2 Range N



6

- a. stone  $\frac{1}{2}$  mile North  
B. Stone Cen to Cen Locust Post S45°E30  
C. stone cen of  $\frac{1}{4}$  sec 23

7

Names	com.	Witness	Mr.	Year	Lib
A	Stone	Sugar	20	1808	5
		& Beeds	10	1838	20

1797

14

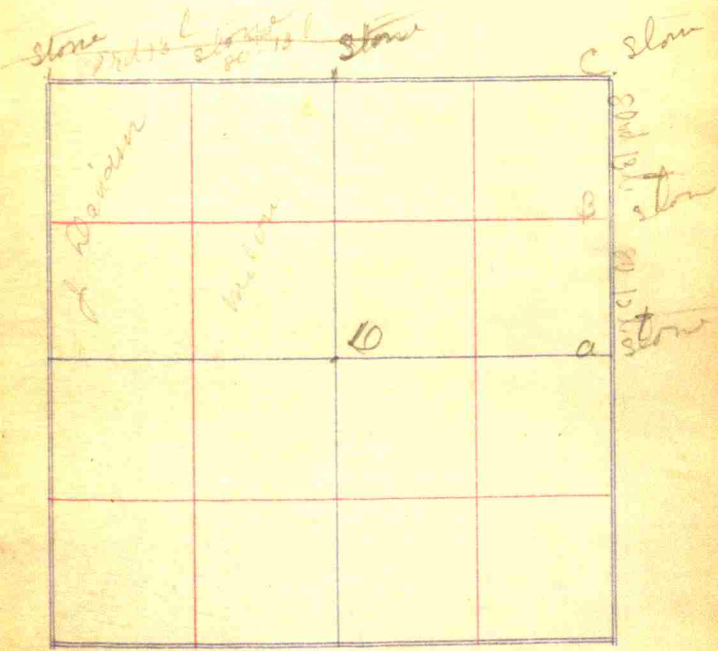
a stone Sugar 14 N 20° W 14  
 Beck 12 S 70° E 14

15

Survey of Section 21 Town 15-17.

2 Range W

No name



18

B stone with part 15 ft west.  
D " 7x13x15 with another stone  
against north side of it.

19



Survey for Frances + Gracie.

A Stone small end up 20 in long

B Stone 9 ch 7 5 l West of B.  
Wit Stone 40 l. South

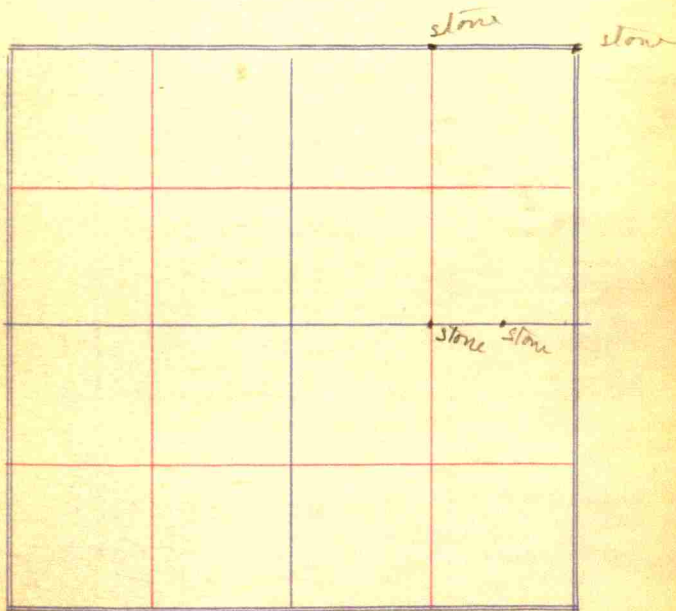
C Large stone  
wit, Stone. 25 l West,

24

Survey of Section 35 Town 14

25

2 Range W  
Stilesville



Width N end 82nd St.  
 Length of E side 160rd of L  
 Width of S end 81rd St.

Lot I. Johnson, sec 15  
 of 64rd & 65th sec 15  
 Begin S & E corner thence N. 81rd St  
 to stone cen. of cent. l. to stake  
 thence N 45rd 10.2 l. to stake  
 thence E 81rd 11. thence <sup>to line of said</sup>  
 S 45rd 10.2 l. to place of  
 peg in, = 23 A.

Lot II.

Begin at NW cor lot I  
 39rd 22 l. north stake.

Lot III 36rd 23 l. wide  
 from N. W. cor lot II.

Lot IV.

a. Iron pad 3 ft long threads  
whole length.  
with a stone 8 x 10 1/2 in E.

8 2<sup>1</sup>/<sub>38</sub> links 4 1/2 over at  
 length 80.17 ch.  
 width of 10 a. 5.53 3/8 ch.  
 at center set over 4 1/2 l.  
 at south side 10 a 46.96 l.  
 set over 20.63 l at Sims  
 corner.  
 a. Stone <sup>5 ft</sup> 11.8 ft  
           <sup>walnut</sup> 12 ch.  
           wit 57.40 E. 65 l  
 b. Stone <sup>1</sup> wit stone No 3 6.95 ft  
           wit stone No 15 l  
 c Stone  
           wit Beech 20" dia  
           S 63° W 3 1/2 ft  
 d stone  
 e Harrow tooth  
 f Stone round  
           wit stone 1/3 1/2 links  
 g. Stone pointed  
           H. on E side  
           Wt part 1 1/2 ft East.

792	93 1/2	14.6
8 1/2	792	40.08 39
20 7 6	166	5.71
3 9 6		45.79
26 7 28 3 7		179
651	396	
12 740.52	61.71	
7 20	146	
1 8 5	76.31	
84		5.53 3/8
12		
40.08 1/2	.177	45.79
57	40	18.10 ft
	7.080	45.79
	8.00	35210 .17
	15.18	32053
	7.59	31570
5.71	7.5) 66) 7.5	
128 5 5 (0.65)		
2 13	70) 66.0	10 90
	60.0	8.5 88
	6.00	240
	6.00	195
17.72	6500	22
	381	77 19.3
	1130	311
	9	35

Record

- A. Stone S. E. cor. loc.
- B. Harrow 469 ch & front.
- C. Harrow 12 ch 84 li & front.

7.26 hd m of sec. cor. in sec 13.  
 4.69 ch = 18.46 hd.  
 7.26 + 18.46 = 26.02 hd.  
 6.41 ch = 23.66 hd.

.36 hd or 5.94 ft

80.56  
 18  
 ---  
 46

271  
 80  
 12  
 ---  
 68

1.06  
 4.24  
 4.24  
 2.12  
 4.24  
 ---  
 4.4970

12.0  
 68  
 ---  
 18.5

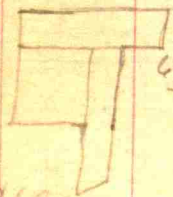
4.6883 sz. ch.  
 4.497  
 4.9296  
 ---  
 10) 14.1149  
 10  
 ---  
 4

2.88  
 1.91 1/2  
 ---  
 2.88  
 2016  
 288  
 ---  
 4.9296

Too Eval. Badly  
 Plainfield?

90  
 60  
 30  
 43

Bag 45' North of N.E. corner of lot 21 Downland  
 to plain. Hence E 117 1/2 ft  
 Hence S 115' Hence N 69 1/2 E 72'  
 Hence N 295' Hence E 66 ft  
 Hence N 82' Hence W 249'  
 Hence S 272' to place of  
 beginning. containing  
 acres more or less



66/82 (1.24 1/2)  
 66/280 (4.66)  
 280  
 ---  
 160  
 132  
 ---  
 16  
 132  
 ---  
 116  
 113  
 ---  
 3  
 66/70 (1.66)  
 66  
 400  
 306  
 ---  
 292  
 8  
 ---  
 300  
 66/249 (3.77 1/3)  
 198  
 ---  
 510  
 462  
 ---  
 480  
 462  
 ---  
 180  
 580 (4.6883)  
 428  
 ---  
 520  
 160  
 132  
 ---  
 280

A Stone 6x8x10.

With stone 16 1/4 c.

E. v. Milhore, deed,  
26 1/2 rd. E. Thence  
12 rd. N.

4/17 1/2 h. over 5 100

4 1/2 1 1/2 1 1/2

15.13 1/2 ch. N. Stone

4/53 1/2

13 1/2

4/26 1/2

6 3/4

West from B 52 1/2 rd. 13 1/2 ch.  
Stone C 27.043 rd E of Sec cor.  
D Stone 6.76 3/4 ch E of A.

4/80  
4/120  
5

20 7.92  
13

28 76  
78 2

10 2.96

20.101

13.333

6.76 2/3

6 3/4  
13 1/2

20.10

20

8.40

27.06 2/3 rd.

53.33 1/3

27.06 2/3 rd

10/13.25

1.325

2.650

2.0,

2.65

2.0,

1.325

1.0,

1.325

1.0,

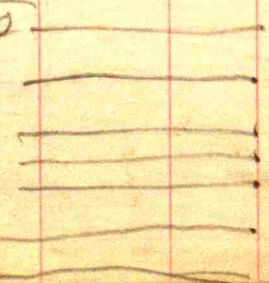
2.65

2.0,

2.65

2.0

13.250



Mrs. Harrison, Survey for

- A Stone Engraved  
B Stone Wit + N.E. Abutment Iron Bolt  
C Stone no witness.  
E. Stone 14 x 12 x 9, 4 ch 93 l W.B.  
Wit Stone pointed up  
to 30 l.

Survey of Section 29 Town 17

Range 2W

Tekin no name





54

~~A. Stone Nit Content 561 0/100~~  
32 ft 8 in

a. Iron pin 10 ch ~~11 1/2~~  
S W 1/2 mile

B Iron pin 20 ch N W 1/4

C " " 10 ch S and S W 1/4

D " " center N 1/2

E " " 24 ft center N 1/2

F " " 24 ft " N 1/2

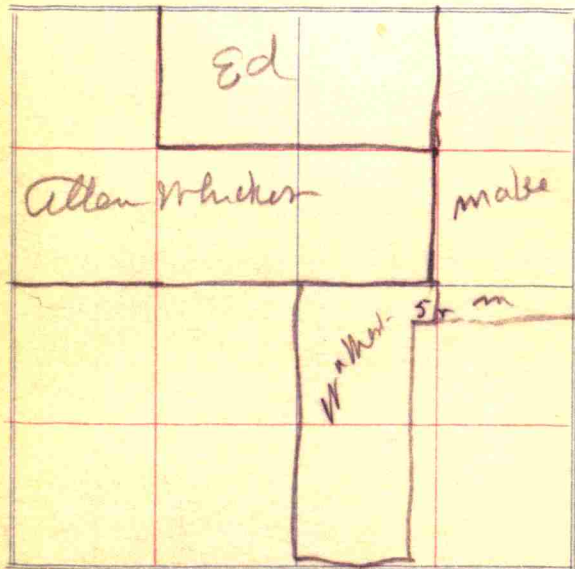
55

List

56

Survey of Section 1 Town 14 57

N Range 2 W



2 Acres plus E end 4.19 ch

2.09 1/2 } 320

14.64

~~2.09 1/2~~

13.76

29.28

7.32

20.67

3 1/2 Acres

4.2 1/2 ch

6.30 " South side

1.24

10.68 5 1/2 l over length

6.30

16.98 light of 80, 40 5 1/2 ch

8.49

width 20.07

1.24

2.7 1/2 ch

4.19

26.94

3.47

5.07

24.29

17.35

12.59

7.32

4.19

6.588

7.32

29.28

21.067

100

36

634

3.00 a.

1.05

2.07

7.97

20.07

5.07

15.00

20.07 16 0.00

17 0.49

195.1068

15.063

144.70

15 2.00

13

42

D. 9

2

68

1  
29  
30  
4  
6  
1  
10  
6  
116  
8  
10

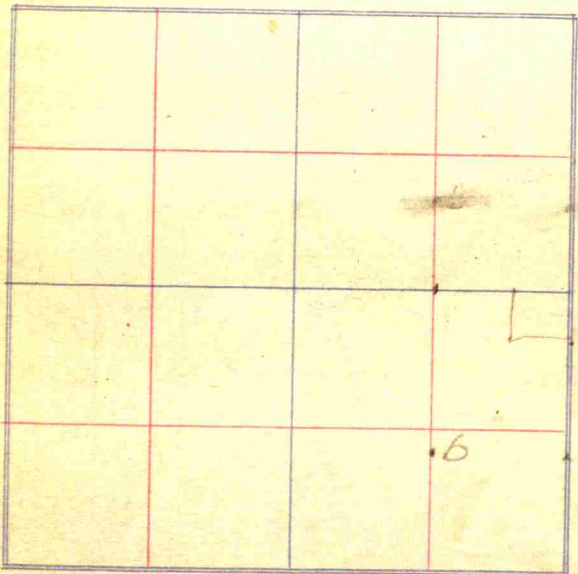
472-7

69

Survey of Section ..... Town .....

Range .....

make card for Harry  
Crawford - Sec 9.



1 1/4 rods to S W cor,  
6 rods 24 rods 24 1/2 c.

Harry Crawford

70 3 2  
 39 6 2  
 66 7.9 2

50rd. or 12 1/2 ch. to Moses Hill  
 then N 17.62 ch on West side  
 W.P.R.  
 E side 20.06 1/2 ch

34  
 18  
 16  
 2 | 37.68 1/2  
 18.54 1/2

37.690  
 103 45

37.69  
 25  
 62.69  
 12  
 74.04  
 40  
 37.69  
 2.31

69 rd 3 1/2  
 17.30 1/2  
 20.06  
 37.37

75 3 2  
 39 6 2  
 66 7.9 2

Begin at South a corner Sec 9  
 then south in S. East line  
 Sec 16 40 rd. then West  
 45rd 7 1/2 ch then N 5 1/4 rd.  
 then West 24 rd 24 ch. then  
 N 50rd 18 ch. then S 80rd  
 then South 50rd 18 1/2 ch to  
 begin

a Cement slab 18 x 12 x 4  
 40 10 ch 4 1/2

55 33 1/2  
 74 24 1/2  
 50.00  
 20  
 50 10  
 11

39 - 105 1/2  
 11.64  
 11.64

71  
 55 3 2

19.75  
 75 1/2  
 1450.0  
 10 1/2  
 1450.0  
 25.36  
 39.86

Stone

West 10.7 1/2 ch. to SW  
 Cor field  
 Son East end 8.68 1/2 ch  
 Son W " 8.68 1/2 stone  
 Sof W 1/2 in 8.68 1/2 ch

A Stone 22 feet x 17 ft x 4  
 B " 20 " x 16 " x 4  
 C " 14 " x 8 " x 4

Begin 9.48 1/2 ch east of West  
 1/2 mile stone and runny thence  
 South 8.68 1/2 ch, then east 10.7 1/2 ch  
 thence + 3.68 1/2 ch. then west 3 ch  
 then + 3 ch, then west 7.7 1/2 ch  
 Estimated to contain 841 a.

10.7 1/2  
 8.68 1/2  
 53 575  
 8 57 20  
 64 29 0  
 537 20  
 93.0 59 77.5  
 91  
 8.4 159

10 7 1/2  
 13  
 71 7 1/2



9 1/2

20, 20  
 10, 7 1/2  
 9.48 1/2

7/11

4/17

55 12.75

78

width of 3 corners of road

S 2.65 ch. on west end

S 40.12 1/2 ch. on west end

E 40.21 1/2 on south side up to underwood.

N 17.09 ch. from underwood to line

E 20.05 1/2 ch. to center of road

N 512.64 to school lot

N 10.25 to center of road

W 10.43 1/2 to west of line

N 60.24 to begin

triangular piece 1.77 Acres.

town 13.72

760 had 161.36

15.49 52.24

11 13.72

38.52

213.60

15.44

198.11 25.75

12.71

20.25

20.14

60.00

40.90 to head

60.27 2.61

13.36 8 15

40.21 10 15

20.55

60.77 1.36

1.77 2.11

159.54 63.2

38.32 126.6

198.11 105

40.12 17.09

2.65 4

37.47 13.09

12.90

19.04

29.88

13.13

43.14

24.73

13.09

12.64

12.90

12.64

12.6

46.90

10.43 1/2

36.56 1/2

17.09

12.90

19.21

40.25

12.90

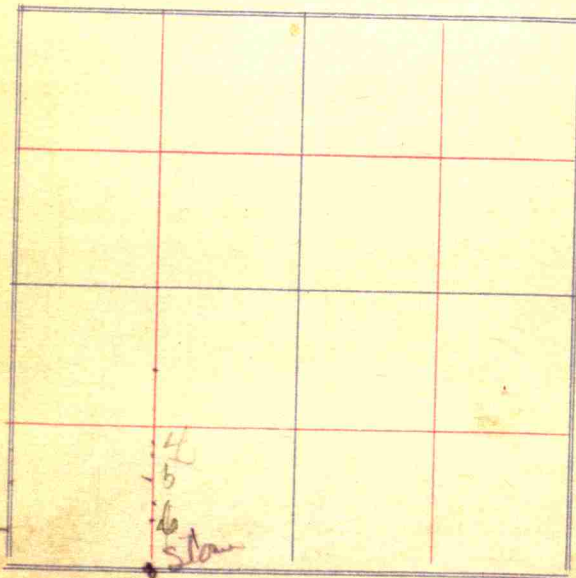
12.64

12.6

- 1 Stone 1.7 ft ~~8~~ x 6 between  
38 1/2 nd to SW corner stone  
with stone 1nd. East
- 2 Stone 30 d 5 1/2 ft of 1  
13 x 12 x 6  
with boulder 29 l East
- 3 Stone Stone 12 x 12 x 9.  
36 nd 5 1/2 ft of 2  
with stone 3 1/2 l East
- 4 Stone 12 x 7 x 6  
36 nd 5 1/2 ft of 5  
with stone 25 d l to stone 25 d l
- 5 Stone 30 nd 5 1/2 ft of 6  
9 x 7 x 6  
with stone 20 l S
- 4 Stone 18 x 9 x 6 1/2  
38 nd 5 1/2 ft of of cen S  
SW 1/4  
with stone SW 1/4 102 l.

Survey of Section ..... Town 89

Range .....

29 l S  
18 l N W sec. J & Q

Fincher et al



90

1.1 ft

from star

S. 40.30 1/2 ch. length West side

N 10.25 ch

2 km 9

3 Flora 6 broad,

5 Sarah 36 broad,

Woods 30 broad,

9 W. 38 broad,

160

35.78 length of James West  
line

149.03

Cen

James in line on Beach 94 ft

Cen. SSW 1/4 sec 10 91 ft

Star Beach 94 ft N 10 1/2

" 91 ft N 23 W

40.30

20.25

161.32

161.16

161.05

4.02

165.07

41.32

4.20

165.07

4.02

161.05

40.30

1.02

41.82

41.41

165

41.41

41.02

9

792

14

3168

792

12110.88 9.24

102

24

-8

48

20

20

91

48

16

49.32

2.32

41.41

.11

41.41

10.35

41.41

4

163.64

25

9

165

924

14

4) 25.75

6.41

792  
9
$$\begin{array}{r} 12 \overline{) 71.28} \quad (5.94 \\ \underline{60} \phantom{00} \quad \underline{1.1} \\ 112 \phantom{00} \quad 4.84 \\ \underline{108} \phantom{00} \\ 48 \end{array}$$
792  
30
$$\begin{array}{r} 12 \overline{) 237.60} \quad (19.8 \\ \underline{12} \phantom{00} \quad \underline{3.94} \\ 118 \phantom{00} \quad 25.75 \\ \underline{108} \phantom{00} \\ 96 \phantom{00} \quad 5.15 \\ \phantom{00} \quad \underline{4.84} \\ \phantom{00} \quad 31 \end{array}$$

3110

11

405

1.1.1.1.1

Survey of Section ..... Town .....

..... Range .....

HW corner 1 rock 16824  
 Walnut N46°W 141 l  
 Beech S 22°W 57½ l.

	35 ft		26
	W 57 ft		
	2		1

Martin et al

100  
94

Slant on East side

6.88 ch

27rd 11 ft

40.30 ch, one South side

40 14 1/2 ch on South

town

2.42 ch

36.75 West side by

40.51 ch on West side

8.66 ch on N end town

4.68 on East end

10.12 on South side

West end town 7.18

R.R. 1.05 ch on mt

On N 3.70 ch on to

1230

11

27.45

46.11

30

27.75

12.36

95

8.66

3.70

8.30 back to R.R.

At end of E 40.11 ch.

triangle in, East end 2.16 ch  
South side 7.69



$$\frac{2.16 \times 7.69}{2 \times 10} = .830$$

1/4 = 162.125 a,  
two desc. .9.37  
area .83

172.335 a,

orange put  $\frac{1.85 \times 3.56}{2 \times 10}$

$$\begin{array}{r} 3.56 \\ 7.05 \\ \hline 178.8 \\ 3.56 \\ \hline 20 \overline{) 378.8} \\ \underline{200} \\ 178.8 \\ \underline{178.8} \\ 0 \end{array} \quad .1869$$

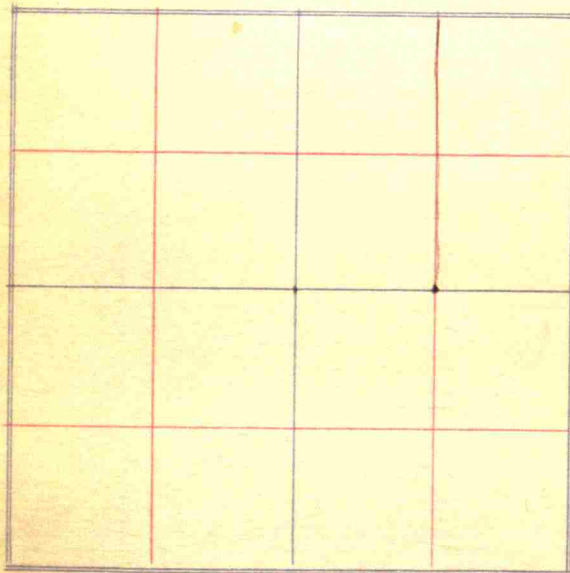
96

length west line 33.33 ch.

97

Survey of Section ..... Town .....

..... Range .....



$$19.85 \text{ ch.}$$

$$6.67\frac{1}{2} \text{ ch. Net thickness } N \ 40.60 \text{ ch.}$$

$$a. \text{ Stone } 20 \times 12 \times 9 \ 6.67\frac{1}{2} \text{ ch.}$$

$$N \ \text{center} \ \& \ \text{center}$$

$$\text{lee}$$

$$b. \text{ Stone } 24 \times 14 \times 6 \ 6.67\frac{1}{2} \text{ ch.}$$

$$\text{net center } N \ 1/8 \text{ ch.}$$

$$40.60$$

$$6.67\frac{1}{2}$$

$$28420$$

$$24360$$

$$24360$$

$$2030$$

$$27,10050$$

$$5349$$

$$80.59$$

$$1133$$

$$13.17\frac{1}{2}$$

$$440.60$$

$$79020$$

$$5268$$

$$2000$$

$$53.49040$$

$$19.85$$

$$6.67\frac{1}{2}$$

$$13.17\frac{1}{2}$$

$$19.85$$

$$6.67\frac{1}{2}$$

$$13.17\frac{1}{2}$$

$$80$$

$$20$$

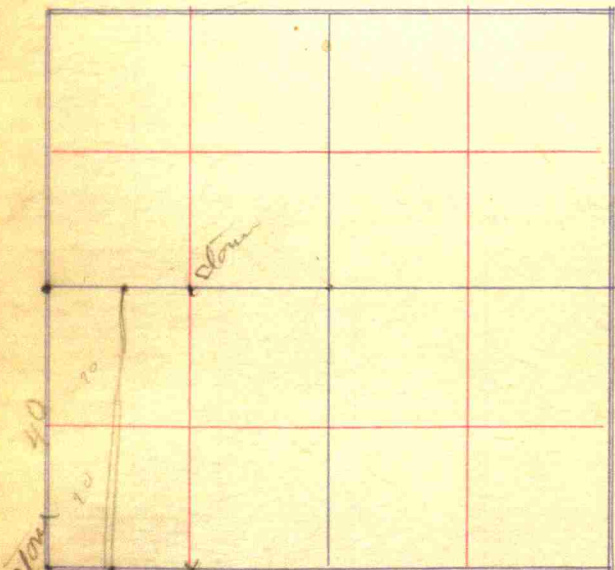
$$59$$

100

Survey of Section 13 Town 17 101

Range

18x10  
stone cen S. 1/8 E. 1/4  
one side rounded other flat



9836  
Survey Belch et al  
stone 6x10 1/8  
S 27° 21' E.

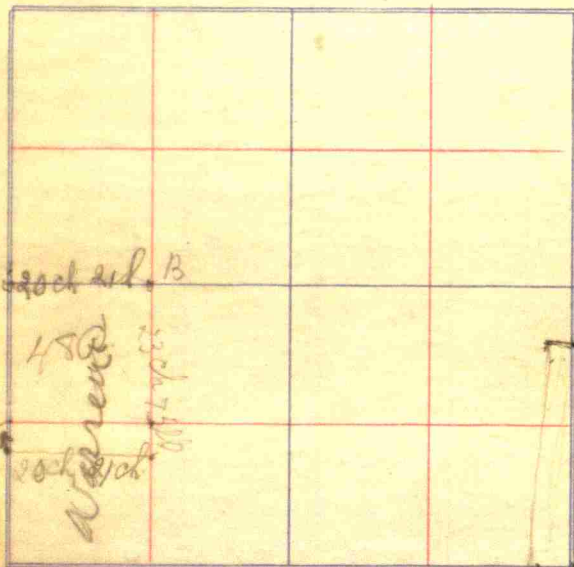
W $\frac{1}{2}$  mile stone 15 x 989  
 with stone S 35° W 3 1/2 l.  
 19.80 ch.

Danville

Survey of Section 14 Town.....

Range.....

NW 5 T or R



Alva

Marion

B. Lawler

Aloa Warren X

104

Found south east  
corner stone center of  
road. A

Found north east  
corner stone B

Found north west  
corner stone C

Set transit and run  
east line.

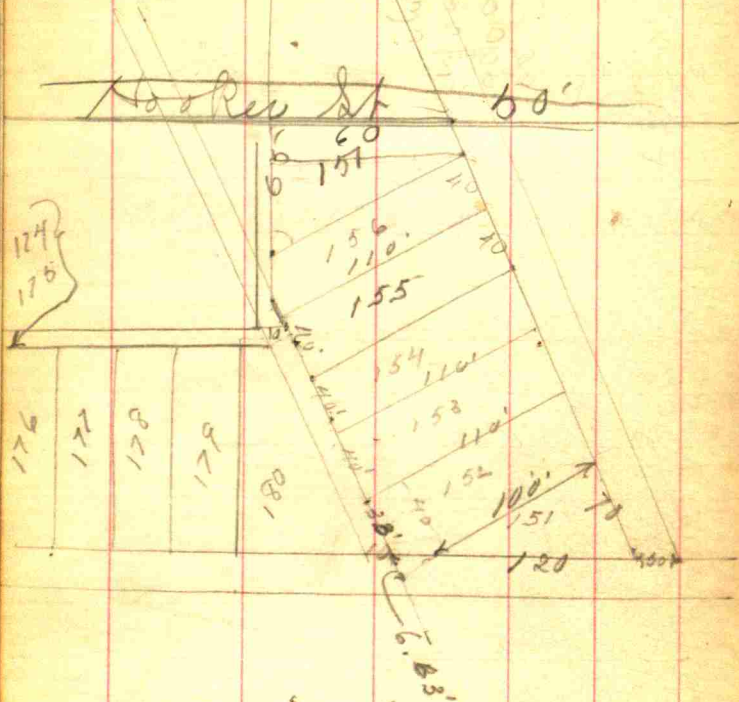
Measured north line  
from east corner to  
stone, west 20 ch 21 links  
south on line from  
north east corner.

23,75+ ch. a stone  
17" X 12" X 10" point up.

witnesses a small .105  
walnut tree 2 1/2 W  
Run <sup>20 ch 21</sup> line and measured  
20 ch 21 links west and  
set rock 8" X 10" X 12"  
with rock 8 X 10" N 25 1/2 W  
also a Hackberry tree  
S 76° west  
Lot 131



106

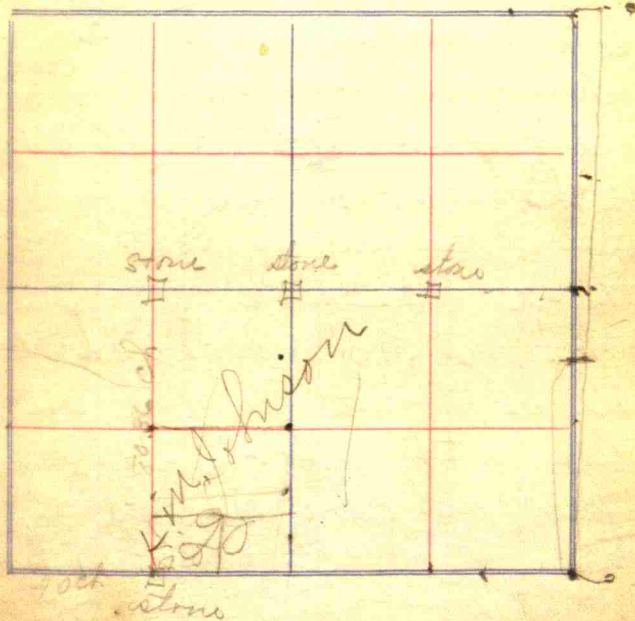


Bearing of back st. N. 86° E  
 Bearing of ally 4 35° W.  
 Total of 270' on each  
 side 280' first four lots  
 $190' \quad 280 - 90 = 90 - 80 = 10'$

Survey of Section 15 Town 107

Range

Johnson



Survey Hebbard Johnson

240  
 13 1/2  
 10

## Johnson survey

Found south w. corner  
stone.

Found n. w. corner  
stone

Found N. E. corner stone

North side 20.21 ch

thence run south

Set out 23' at n. w.  
corner stone

Run south to S. w. cor  
stone. 80.36 ch

Set out 23' at south stone

Run line north 20

ch set stone 14' x 14' x 10"

with an Elm tree 20" in

Dia S 45° E. Dist 38 links

thence east 20.21 ch to

east line. Drive a

stake. A stone provided

with a apple tree S 34° W

Dist 20.285  
110 08 20.08  
4  
80.32

Lat  
0668  
0334  
0668  
2670  
1669  
1885  
0943  
1885  
7541  
4713  
20.061623

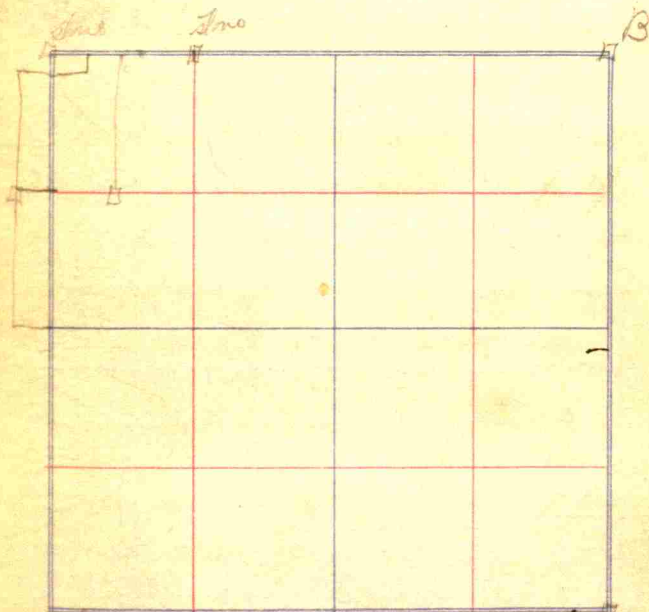
7.11  
4  
28.47

20.06  
4  
80.24

Survey of Section 11 Town 111

Range

Rogers -  
W S J & R



Set rock 15 x 14 x 10 50rd  
W. of N.E. cor. sec. line  
south of this with east  
bearing south 80rd  
and set rock 18 x 14 x 10  
with rock  $4\frac{1}{2}$  E Dist 24lk

Set out 30' at south  
end.

Run sec line  
varied 2 ch  $4\frac{2}{3}$  links  
to east.

Run line on north  
side of Lewis. Located  
corner stone  $1.81\frac{1}{2}$  ch  
west of sec line.

Set a stone  $10 \times 12 \times$   
 $8'$  South  $\frac{1}{2}$  E. Dist 66 links

### Second Survey

From S. E. cor of sec  
stone 86 long  
West 924 W Dist 124 links  
a Bl. W. 366 W. Dist 191 links  
Ang  $90\frac{1}{2}$  or  $89\frac{1}{2}$ .

~~Run north line  
set stone at 30 rods  
east of N. W. sec cor  
Run south 80 rods  
south 7 rods west of  
N. E. sec cor.~~

Set corner rock  
Run south from this  
80 rods and set cor  
stone

Set cor stone  
30 rods west of sec  
rock.  $14 \times 10$  Do  
West Dist  $26\frac{1}{2}$  links  
Bear.  $436\frac{3}{4}$  E.

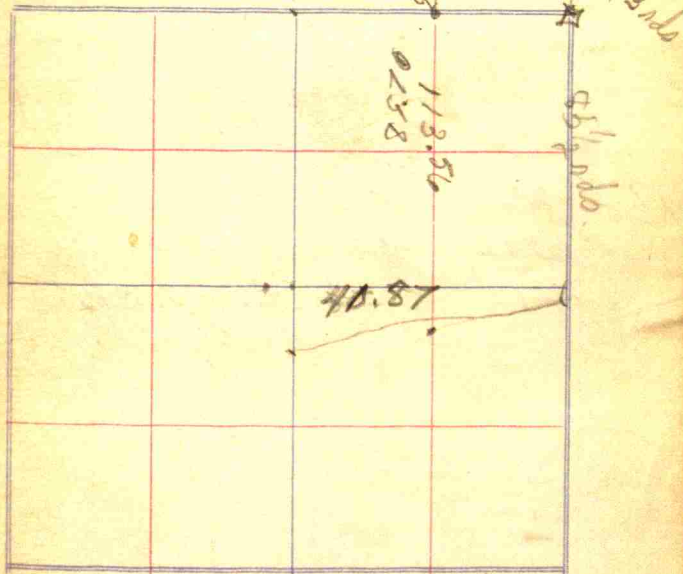
## Coyne Survey

Run 300ds east of  
N.W. sec cor and  
set rock 10x12  
wit. a rock 6x8 Dist 24  
Bear  $43\frac{1}{2}^{\circ}$  E  
Also a Burr oak 20<sup>th</sup> Bear  
 $85\frac{1}{2}^{\circ}$  W. Dist 94 ft  
Run south 300ds and  
west 100ds and set  
rock 8x12x16  
wit rock  
Bear  $25\frac{3}{4}^{\circ}$  W Dist 15 $\frac{1}{4}$  lks.

Run east 300ds east  
of this rock and  
set rock 10x14x20

Wit a rock 10x11  
Bear  $43\frac{1}{4}^{\circ}$  E Dist 24 lks

27.30 Range  
85.50 167.84 41.855  
112.80 74.94 167.940  
80.92  
81.02

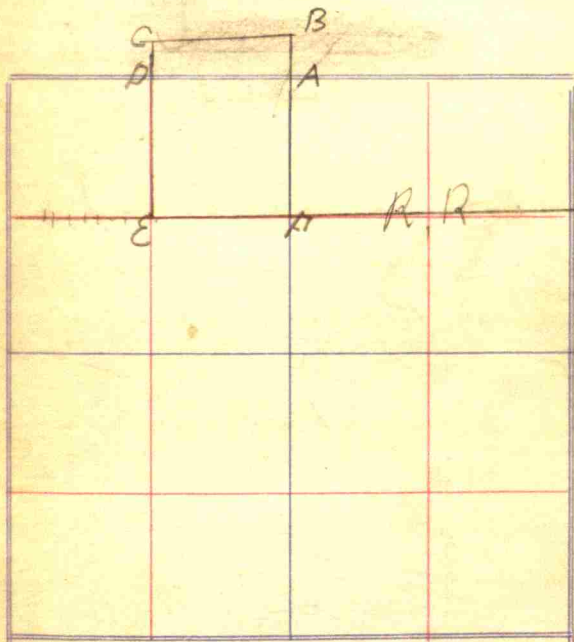


East side 112 ds  $13\frac{1}{3}$  ft  
West side 113.56 ds

From NE cor of sec 12  
 a stone south  $85\frac{1}{2}$  rds  
 From this same rock  
 to center of road 27.3 rds.  
 And from this same  
 rock to sec line  
 $80.85\frac{1}{2}$  rds  
 Entire west line  
 113.56 rds  
 From ~~to~~ sec line  
 North Dist. 5.99 ch  
 23.96 rds

Survey of Section 1412 Town 15

W Range  
 Survey of  
 Sheets & ~~...~~



A to B - 27.30 rds.  
 A to D - 80.855 rds.  
 D to C - 23.96 "  
 D to E - 89.60 "  
 E F - 80.855 "

Cot for Maxwell.

118

From N.W. side cot  
10rd and west end  
a stone  $24 \times 10 \times 7$   
with ~~stone~~ Sugar tree  
N  $60^\circ$  E Dist 55 lk

Also a stone S  $78^\circ$  W  
Dist 17 lk. Stone  
a foot under ground.

119

122

set 4. 13 links  
 whole dist 40.22 $\frac{1}{4}$   
 set rock 20' x 12' whole  
 wit Rock bear 26 $\frac{3}{4}$   
 dist 14 $\frac{3}{4}$  links

Dist.  
 41.285

123

~~Wat~~      ~~Dep~~  
~~0943~~      ~~0334~~

3771      1335

0943      0334

1885      0668

7541      2670

4713      1669

38.921623      19789169

13.789169



124

40.2225 - 2/40.2225

4 20.112

2/60.8900Deg  $70\frac{1}{2}^{\circ}$ 

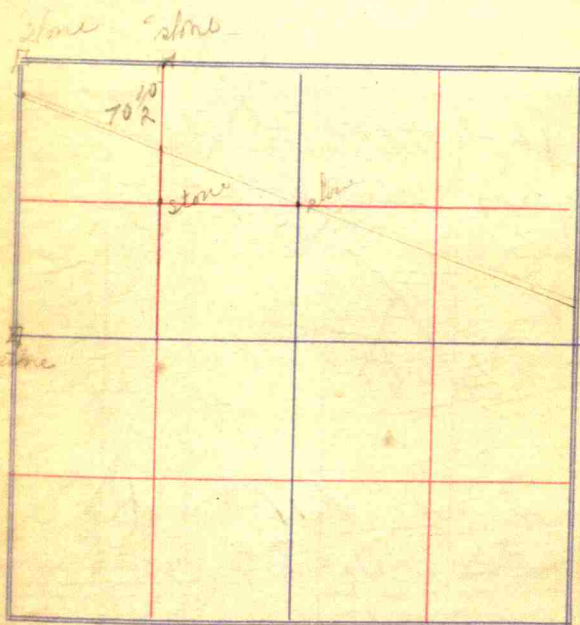
Dist	Lat	Dep
165.24	0943	0334
10000	2003	5656
6500	4713	1669
500	0943	0334
4	3771	1335

11917501 1067575

Survey for J. Harlan 125

Survey of Section 35 Town 17 N.

Range 14 W.



C of S. W.  $\frac{1}{2}$   $470\frac{3}{4}^{\circ} E$  33 l.  
 bench  $456\frac{1}{2}^{\circ} W$  109 l.  
 C of N. W.  $\frac{1}{2}$   
 Sugar  $420\frac{3}{4}^{\circ} E$  33 l.

Sta. Swope Road - Franklin Tp.  
 134 Swope Transit Notes  
 Greencastle Road at Stone in curb

- 0.
- 1.
- 2.
- 3.
- 4.
- 5.
- 6.
- 7.
- 8.
- 9.
- 10.
- 11.
- 12.
- 13.
- 14.
- 15.
- 16.
- 17.
- 18.
- 19.
- 20.

Base of hill

80  
 20.22  
 351.78  
 161.90  
 141.54  
 101.10  
 606.29.16  
 92.30  
 37.84  
 34.84

16 is 30' N of end of bluff  
 center of bluff  
 30' N of end of bluff.

Sta.  $\frac{72}{100}$   $\frac{1164}{332}$

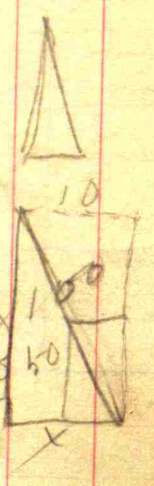
- 21
- 22
- 23
- 24
- 25
- 26
- 27
- 28
- 29
- 30
- 31
- 32
- 33
- 34
- 35
- 36
- 37
- 38
- 39
- 40
- 41

$\frac{172}{100}$   $\frac{19}{100}$  rds  
 $\frac{20}{30}$   $\frac{110}{100}$   
 $\frac{100}{344}$   $\frac{202}{144}$

Rise from bridge to  
 20 feet north of stone  
 34.

37 37.90 level

Sta	138	Sta
83	.05	104
84	$\frac{4}{20}$	105
85		106 <sup>100</sup> turn
86		107
87	162.20	108
88	$\frac{40.55}{4}$	109
89		110
90		111 $\frac{4.10}{2}$
91	$\frac{16.20}{2}$	112 .025
92		113
93	$\frac{8.10}{1}$	114
94		115
95		116
96		117
97		118
98		119
99		120
100		121
101		122
102		123
103		124



Sta	139
125	Bridge
126	2762.20
127	$\frac{81.10}{2}$
127+9	end of Coalescently
	like
	$x y = 100 \text{ sf ch.}$
	$\frac{x y}{2} = 33$
	$\frac{20.24}{2} = 10.12$
	$\frac{1500}{4042} = 2.375$
	$\frac{7580}{6063} = 1.25$
	$\frac{14770}{14147} = 1.04$
	$\frac{11230}{10105} = 1.11$
	$\frac{11351}{10105} = 1.12$

Commissioner of ~~Land~~  
Land Office Dept of  
Interior.

Last pamphlet con-  
cerning the restoration  
of lost and obliterated  
corners.

4000 + 45,527 = 41,25

4125

227685

91074

45535

182148

4011898401 75 (46,96

160

278

240

2

388

2

792

21

584

4

84

3

820

1

181

41825

20.625

12/178.20

1

Survey of Section 33 Town 15-101

Range W

40  
2610  
1319

15  
50  
106

54.00

54

160

			10
no name			
			5

66.50

26.16

40

4

26.50

106.00

52

13

SE corner of rec 33 a stone  
16 X 24 mit a.P. oak 74 S 60 1/2 W 150

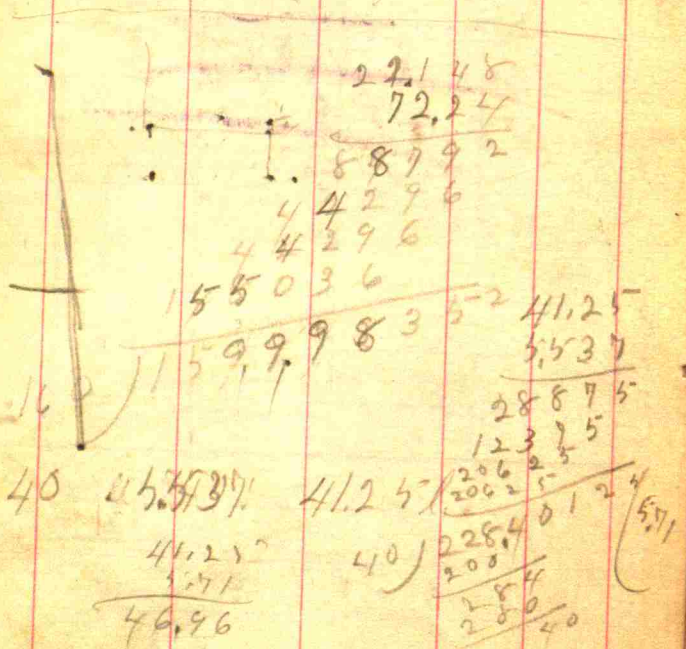
Buckeye 12 S 24 1/4 W 134

S 1/2 mile Limestone 12 X 16, Boulder on top

600 000 Oak 15 N 13 1/4 W 42

200 000 B. Walnut 18 1/4 W

66 links from old witness.



46  
 35  
 480  
 1680  
 1240  
 40

8  
 5  
 40  
 63  
 16

271320  
 40.2225  
 4 33 3 30  
 2/60.8900 99 96  
 4/80.495 00 6 6  
 20.123 108  
 195

1806 / 100.00  
 9030  
 9700  
 9030 2212  
 6700 32  
 54152 148  
 1282 841  
 1806 903

Wagner Head  
Wagner

- S 1. Sewer S of church 6 ft
- 2. Bridge over Little White Lick  
20 ft. - 40 ft
- S 3. Sewer
- 4. 10 ft concrete bridge
- 5. 20 " wooden bridge
- 6. 3 " boiler
- 7. 15 in iron pipe
- ~~8. Gladys~~
- 1. Small wooden bridge
- 2. 14 ft. wooden " " small
- 3. 8 " " " "
- 4. Sewer to be put in S Lane Mills
- 5. 20 ft wooden bridge.
- 6. 2 small sewers  
in field south of Lane Mills
- 7. 20 in sewer, 6"
- 8. 6 ft boiler
- 9. 16 in sewer to be concrete
- 10. Sewer at Cross Road.

8940 263

320 155

$$\begin{array}{r} 2 \frac{1}{2} \\ 263 \\ \hline 1800 \end{array}$$

Mrs. P. G. Kamp,  
Shelbyville,

68  

$$\begin{array}{r} 80 \\ 1695440 \\ \hline 2480 \\ \hline 640 \end{array}$$
 5000.000

$$\begin{array}{r} 5000.00 \\ 13,500.00 \\ \hline 35,000.00 \end{array}$$
 .027

$$\begin{array}{r} 80 \\ 12 \\ \hline 3 \\ \hline 95 \end{array}$$
 2 3/4 > 5

156 South Boundary of Sec 34

40 ch set post gn sec,  
 mt. Beech N 70W 10 l.  
 " S 216 16 l.  
 38 ch spring branch 5 l wide  
 80 wch set post - cor sec 33 & 34  
 Beech 9 in W. S 15W. 14 l.  
 Elm 14 " " N 35W 42 l.  
 June 24 1819,

160	302	165
220	57	6
<u>11200</u>	270	7990
220		147
220	208	
220	210	
40	320	49
1640	320	
4180	3840	
6800	600	
8000	160	
3000	400	
	2800	

4/18,40 970  
4.60 17.50

192  
 99976  
 5.94  
 17.50  
 4  
 70.00  
 17.50  
 100.00  
 8750  
 12500  
 12250  
 2500  
 1750  
 7500  
 5.714  
 68  
 80  
 40  
 34  
 54  
 480  
 640  
 22640  
 1600  
 130  
 200  
 140  
 50