

BENNETT RD
LEAK RD

151

MINING
TRANSIT BOOK

868 A

||||

||||

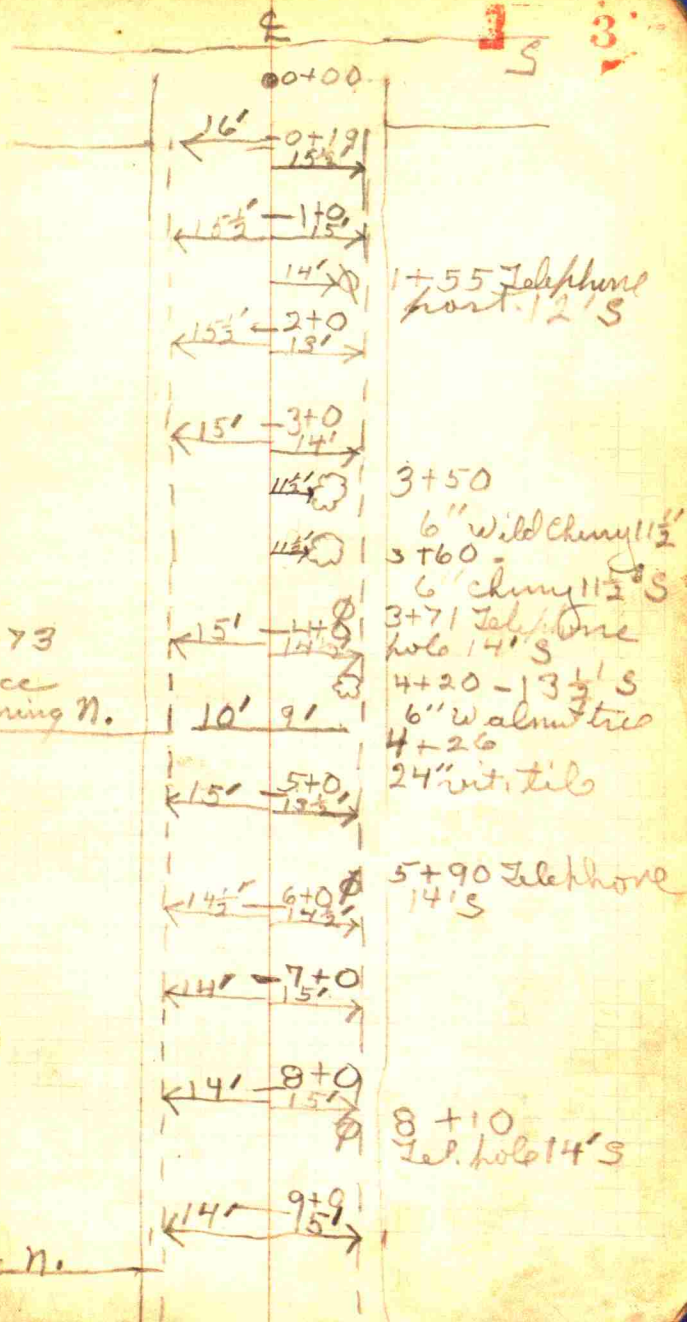
Center of Road 946 feet
from Stone South of Mile St.

900 feet from South
of road on the Left LINE

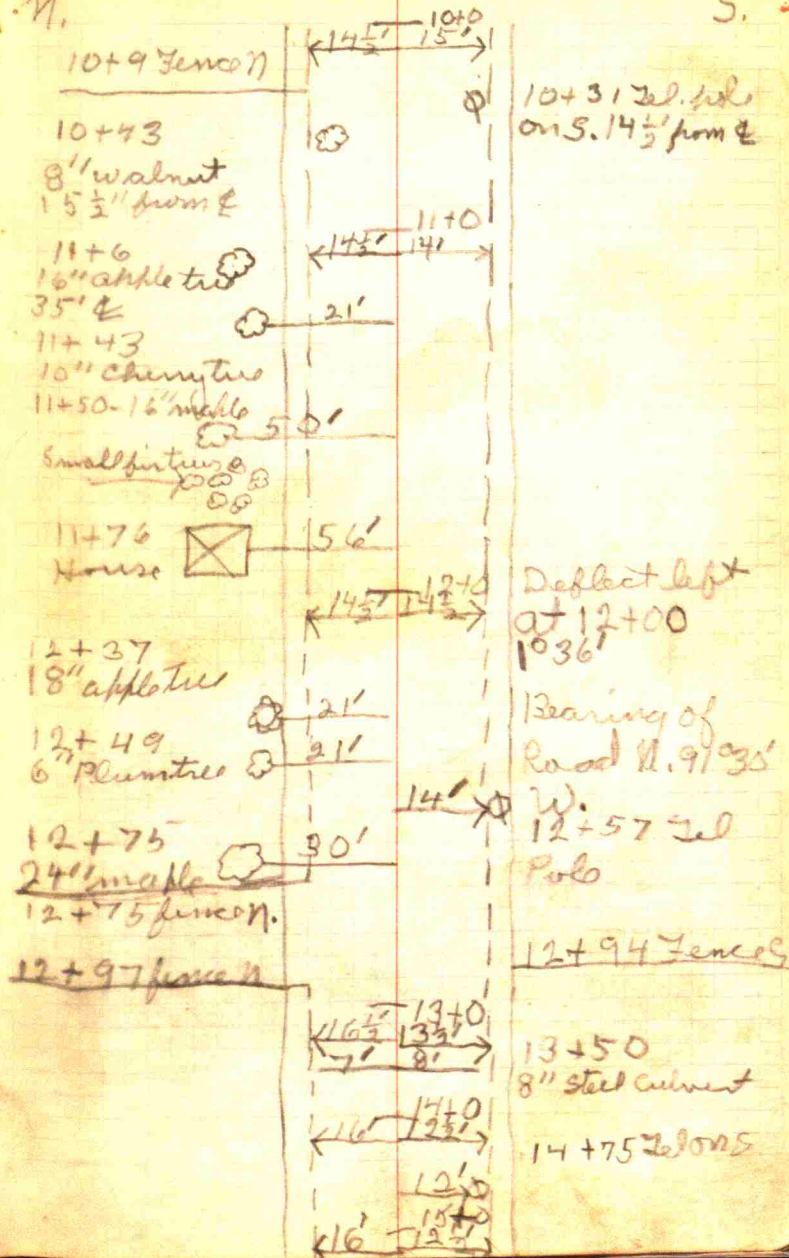
1116 feet from Stone st.
Mile South of beginning
Pt. of Rd.

Bennett Rd.
Middle Trwp.

n



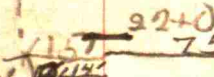
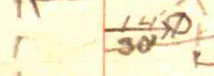
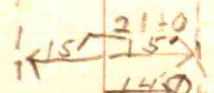
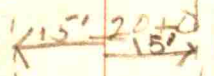
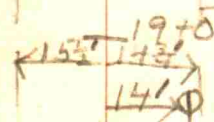
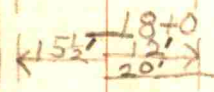
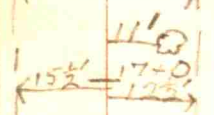
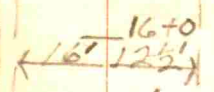
7.



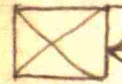
η.

15+90 20'

8" Walnut on η



22+26 Tel Pole
 22+28 Fence η.
 22+30
 Bennetts Barn



95'

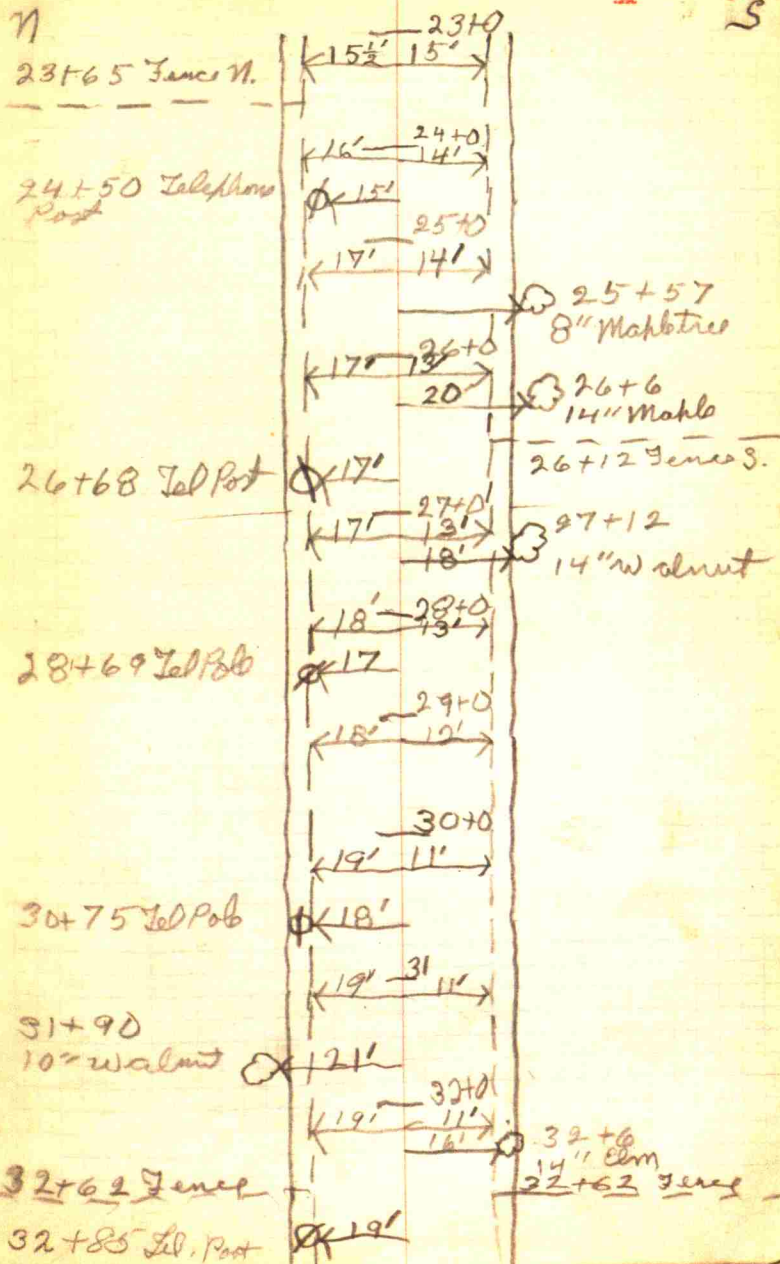
16+95

18+88
 30" maple
 18+94 Fences

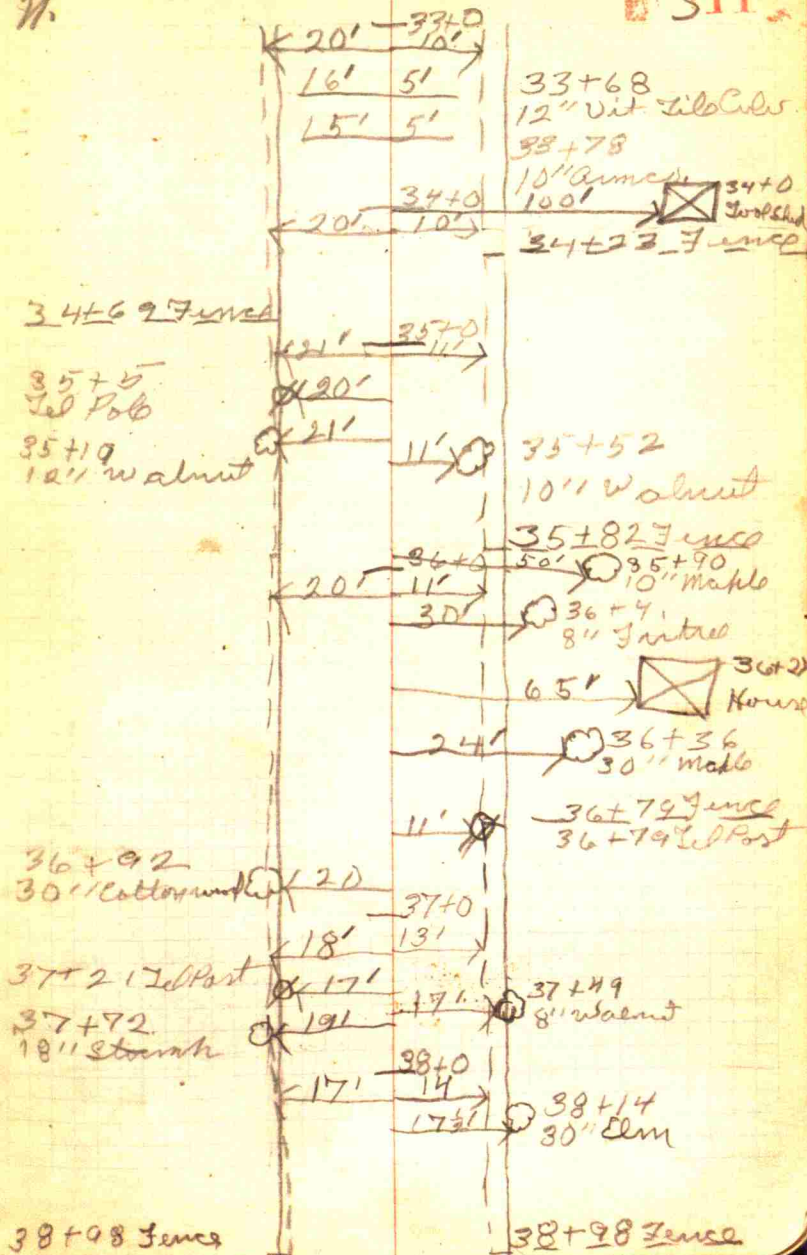
19+12 Tel. Post
 Orchard
 6" trees

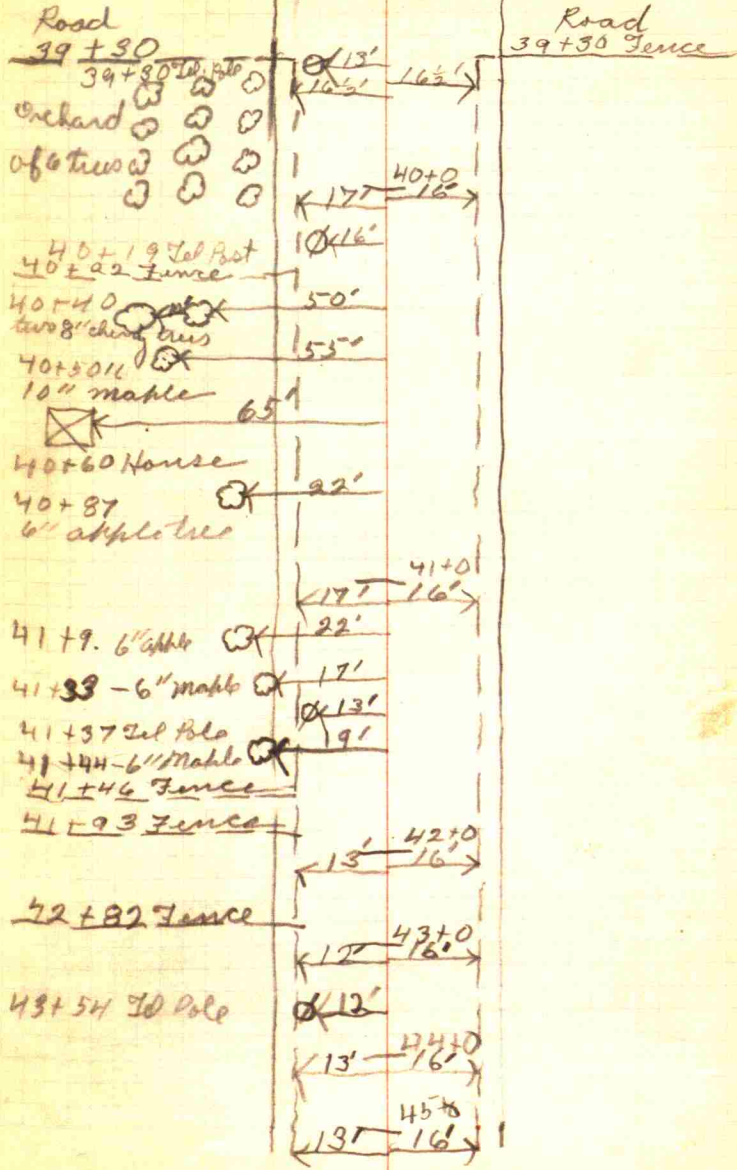
21+25 Tel Post
 21+35 10" maple
 21+50 Fences

22+0 - Bennets House
 22+73 Fences



7/1

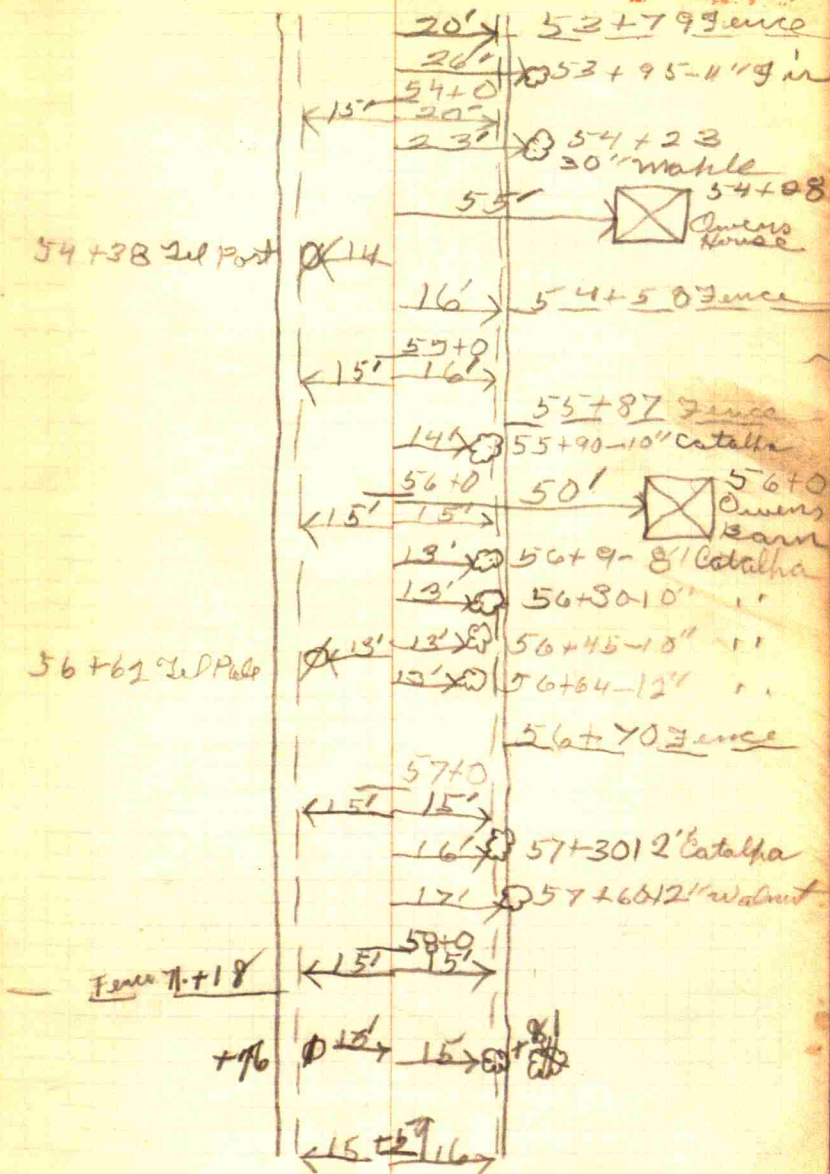




66-84-94

N.

	9' 10"	45187-10' arched
45+66 Jel Polo	13'	
45+84-20' Mail	18'	
45+94-Fence		
	46+0 ←14' 16'→	
	47+0 ←14' 15'→	
47+87 Jel Polo	13'	
	48+0 ←13' 15'→	
	9' 49+0 ←13' 15'→	4970-Vite Tile 1211
	50+0 ←14' 16'→	
50+8 Jel Polo	13'	
50+21 6" ash	14'	
	51+0 ←14' 15'→	
	52+0 ←14' 14'→	
52+21 Jel Polo	14'	
52+55 Fence		52+55 Fence
	53+0 ←15' 14'→	



N.

13' 60 16' +0

+0

~~15' 01 16'~~
13'

14' 67 15'

14' 63 16'

+15'

13'

14' 64 16'

15' 65 15'

65+38 Tel Pole

~~13'~~

65+70 Fence

16' sub.

Road.

66+14

65+74 16'

65+75 Fence

14 1/2'

Road

13'

66+15 Fence

67 1/4'

66+20 Tel

13'

67+74

68-13

69-13

70-7

~~12~~

15

70-13

18

18

69+15-12" Arceuthobium

69+39 Zel Palo

369+49-36 Sycamore

70+14-36 Elm

70+48 Fence

70+54-10" Walnut

55' Barn

71+23 Fence

71-13

35

~~12~~

18

71+15-8" Mahoe

71+30 Zel Palo

71+42-10" Mahoe

71+75-Fence

16-72-14

14-73-14

13

73+31 Zel Palo

16-74-13

74+81 Fence

15-75-13

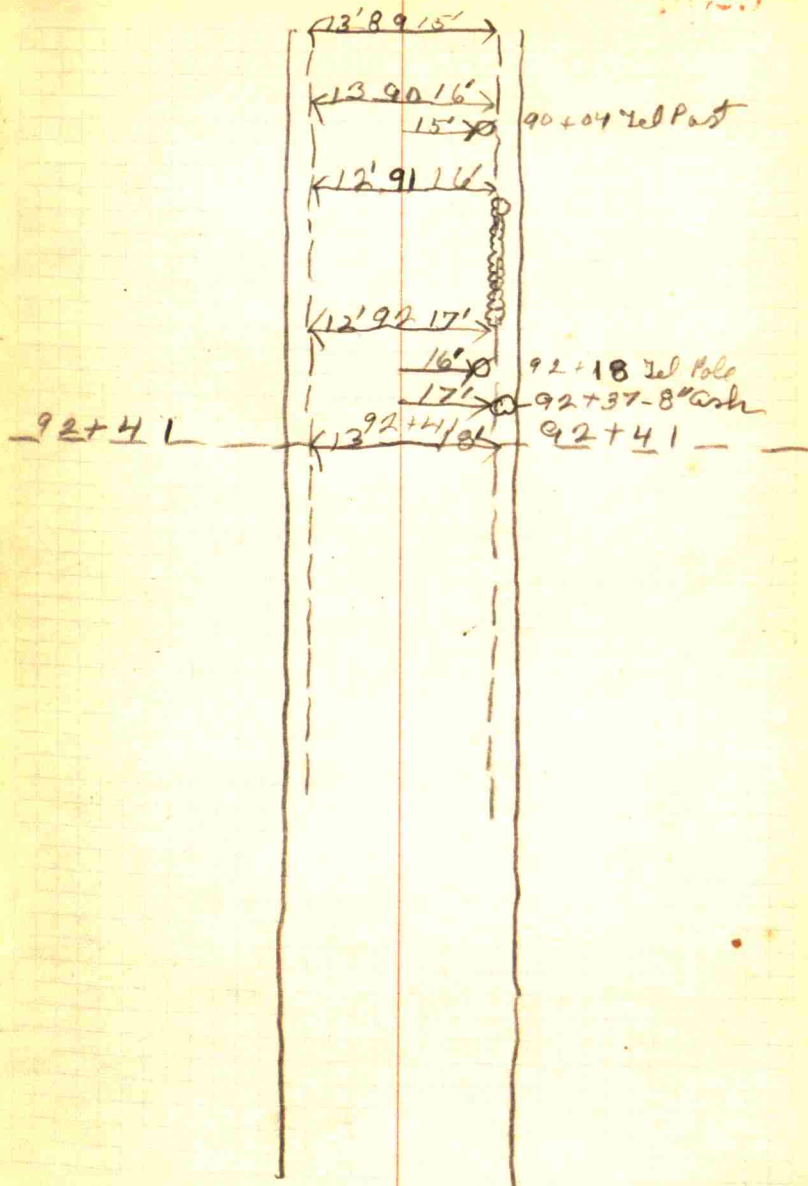
~~12~~

75+34 Zel Palo

$\leftarrow 15' 76' 13' \rightarrow$
 $\leftarrow 15' 77' 13' \rightarrow$
 77+17-30" Walnut $\leftarrow 17' \rightarrow$ 77+46 To Polo
 $\leftarrow 12' \rightarrow$
 77+68-30" Walnut $\leftarrow 14' \rightarrow$
 $\leftarrow 15' 78' 135 \rightarrow$
 $\leftarrow 16' 79' 14' \rightarrow$
 79+9-24" Walnut $\leftarrow 17' \rightarrow$
 79+15 Fence 30 79+25 Fence
 $\leftarrow 13' \rightarrow$ 79+18-7" Fence
 79+45-18" Walnut $\leftarrow 14' \rightarrow$ 79+34 To Polo
 79+80-18" wd $\leftarrow 14' \rightarrow$
 $\leftarrow 15' 80' 14' \rightarrow$
 80+16-10" wal $\leftarrow 13' \rightarrow$ 80-80+25-12" wal
 $\leftarrow 16' \rightarrow$
 80+32-12" wal $\leftarrow 13' \rightarrow$ 80-80+37-24" wal
 $\leftarrow 18' \rightarrow$
 $\leftarrow 15' 81' 13' \rightarrow$
 $\leftarrow 12' \rightarrow$ 81+18 To Polo
 81+43-14" wal $\leftarrow 14' \rightarrow$
 $\leftarrow 15' 82' 13' \rightarrow$
 82+20 Fence
 $\leftarrow 17' \rightarrow$ 82+40-30" wal
 82+60-30" wal
 50 \leftarrow \square 82
 +87
 12am

~~16'83 13'~~
 83+24 fence 12' \odot 83+12 Del Polo
 83+57 fence
~~16'84 14'~~
 84+33 fence
 100' \boxtimes 84+73
 50' \odot 84+73 fence
 24' \odot 84+80-6" gir
 18 \odot 84+90-6" gir
~~16'85 14'~~
 19' \odot 85+2-6" gir
 19' \odot 85+19-6" gir
 19' \odot 85+20 fence

 85+48-24" wal \odot
 85+52-36" wal \odot
 85+73 fence
 17' \odot 85+90 Del Polo
~~16'86 15'~~
~~15'87 15'~~
 87+0-24" wal. \odot 17' \odot 87+13-18" wal
 17' \odot 87+21-12" wal
 87+53
~~14'88 15'~~
 14' \odot 88+7 Del Polo
 18' \odot 88+82-24" wal



N 100' N. 95.18 100'S 95.25

0+0	3' out	Stk	Ditch	Berm	Q
1+0	94.04	94.17	94.09	95.02	94.98
2+0	94.44	94.71	94.06	94.76	95.19
3+0	94.21	94.45	93.54	94.37	94.92
4+0	92.90	93.05	93.09	93.62	93.93
4+R6	92.05	92.07	93.11	93.72	94.29
5+0	94.32	94.31	93.66	94.00	94.32
6+0	95.61	95.69	94.92	95.08	95.36
7+0	92.43	92.57	93.21	94.15	94.66
8+0	92.80	92.94	94.47	94.25	94.57
9+0	93.27	93.30	93.75	94.79	94.87
10+0	94.45	94.60	94.80	95.47	96.09
11+0	96.26	96.28	95.75	96.15	96.42
12+0	98.51	98.67	97.25	97.75	97.91
13+0	97.60	97.74	97.33	97.64	97.92
13+50	96.76	96.60	97.41	97.51	97.87
14+0	96.80	96.90	96.92	97.49	97.76
15+0	97.54	97.53	97.30	97.62	97.90
16+0	97.91	98.08	97.46	97.83	98.44
17+0	98.07	98.10	97.07	97.87	98.49
18+0	97.95	98.12	97.37	97.81	98.22
19+0	97.56	97.64	96.84	96.88	97.40
20+0	96.15	96.25	96.08	96.45	97.12
21+0	96.25	96.46	95.83	96.46	96.93
22+0	96.59	96.63	96.30	96.75	97.25
23+0	97.79	97.50	98.02	98.05	98.36

S

Berm	Ditch	Stk	3' out
94.69	94.13	93.98	93.80
94.29	94.29	94.22	94.30
94.15	93.72	94.53	94.65
93.07	93.08	92.70	92.69
93.83	92.75	91.42	91.43
93.87	92.77	93.79	93.73
94.26	93.23	94.68	94.49
94.50	93.25	93.85	93.67
94.07	93.74	94.51	94.49
94.71	93.04	93.89	93.78
94.60	94.57	95.16	94.88
96.29	95.36	96.24	95.92
97.06	96.65	97.53	97.74
97.36	96.89	96.89	97.26
97.63	97.35	96.74	96.90
97.43	97.05	96.84	96.76
97.62	97.27	97.24	97.03
97.85	97.42	97.71	97.69
97.48	97.56	97.81	97.71
97.07	97.41	97.94	97.80
97.23	96.46	96.53	96.41
96.75	96.24	96.67	96.31
96.57	96.98	96.71	96.04
97.66	96.46	97.30	96.99
98.07	98.37	98.60	98.58

0 95.15

0 95.74

B.M.
 next corner in middle
 W. window stone 11+95
 El. 102.18

0 98.75

B.M. N.E. cor.
 Bennett's Bottom
 step.
 El. 120.67

Sta	3' out	Str	Dilat	Burn	B
28	97.54	97.45	97.01 ²⁷	97.27 ²⁵	97.42
28	96.13	96.24	96.18 ²⁸	96.51 ²³	96.84
25	95.60	95.59	95.54	96.14 ²³	96.70
27.6	95.66	96.01	95.70	96.16 ²⁷	96.34
28	96.72	96.73	96.24 ³¹	96.42 ²⁸	96.90
28	96.83	96.04	96.93 ³¹	96.76 ²⁸	97.10
29	96.60	96.51	96.14 ³⁰	96.50 ²⁷	96.95
30	96.83	96.67	95.99 ³⁰	96.34 ²⁷	96.74
31	96.23	96.20	95.69 ³¹	96.32 ²⁷	96.53
32	95.15	95.00	94.52 ³¹	94.96 ²⁹	95.10
33	93.79	93.60	93.33 ³¹	93.93 ²⁸	94.17
34	93.52	92.50	92.56 ³³	93.75 ²⁸	93.89
35	94.65	94.30	94.28 ³³	94.46 ²⁸	94.53
36	94.90	94.81	94.71 ³¹	95.08 ²⁹	95.30
37	94.13	94.31	94.26 ³³	94.57 ²⁷	94.86
38	93.53	93.66	93.15 ³⁰	93.27 ²⁷	93.89
39	92.66	92.82	92.76 ³⁰	92.77 ²³	93.19
40	94.15	94.09	93.09 ²⁹	93.27 ²⁷	93.53
41	93.76	93.72	93.50 ²⁹	93.58 ²⁵	93.05
42	92.16	92.57	91.36 ²⁸	91.71 ²⁸	91.92
43	90.95	90.77	90.50 ²⁷	90.63 ²³	90.71
44	89.71	89.67	89.57 ²⁶	89.78 ²³	90.07
45	88.86	88.90	89.30	89.45 ²³	89.74
46	89.14	89.15	89.17	89.33	89.92
47	89.81	90.70	90.14 ²⁹	90.83 ²⁵	90.32

45+37

Dilat
88.21 88.00 89.15 89.65 88.95

Flow
88.21 88.00 89.15 89.65 88.95

Burn	Dilat	Str	3' out	Bm.
97.06	97.00	96.74	96.79	97.00
96.93	95.97	96.16	96.12	96.93
96.47	95.72	96.28	96.52	96.47
96.06	95.04	96.55	96.66	96.06
96.51	96.13	96.75	96.48	96.51
96.22	96.30	95.72	94.84	96.22
96.79	96.34	95.25	96.31	96.79
96.70	96.41	96.05	96.95	96.70
96.50	95.94	96.77	96.95	96.50
95.29	94.98	96.56	96.31	95.29
94.27	92.95	94.25	94.32	94.27
93.77	93.60	94.19	94.22	93.77
94.67	94.40	95.42	95.44	94.67
95.28	95.86	96.00	96.04	95.28
94.75	94.93	94.62	94.63	94.75
93.67	92.73	93.73	93.76	93.67
93.80	93.09	92.69	92.53	93.80
93.27	92.60	93.31	92.82	93.27
93.10	92.92	93.15	93.18	93.10
91.99	91.70	92.36	91.99	91.99
90.65	90.46	91.45	90.91	90.65
89.97	89.57	90.29	89.64	89.97
89.55	88.97	89.25	88.61	89.55
89.52	88.95	89.83	89.82	89.52
90.66	90.27	90.16	90.18	90.66

2.98.70

097.4

95.00 / 91.67 / 92.19 / 94.11 / 93.51 / 92.41 / 92.25
 95.00 / 91.67 / 92.19 / 94.11 / 93.51 / 92.41 / 92.25
 34.40 34.40
 34.40 + 5.92 = 40.32

94.22

Dilat Dilat
88.00 88.50

Sta	3' out	Stk.	Ditch	Berm	Q
48	89.59	89.52	89.78 ²⁷	89.21 ²⁴	89.59
49	88.27	88.35	88.34	89.19 ²⁹	89.28
50	88.25	88.26	88.41 ²⁷	89.18	89.54
51	88.86	89.81	88.66 ²⁴	89.35	89.82
52	90.67	90.54	89.82	89.77 ²⁶	90.10
53	89.91	91.04	90.47 ²⁷	91.00	91.35
54	92.19	92.37	91.60	91.77 ²⁹	92.15
55	91.87	92.12	92.13	92.35	92.77
56	91.94	91.78	91.42 ²⁹	91.46 ²⁷	91.42
57	90.68	90.95	90.57 ²⁹	90.69 ²⁵	91.13
58	90.06	90.05	90.12 ²⁹	90.37 ²⁴	90.66
59	90.06	89.84	89.35 ²⁶	90.01 ²³	90.29
60	88.67	88.69	88.7 ²⁷	89.00 ²⁷	89.42
61	88.23	88.31	88.37 ²⁶	88.80 ²³	89.15
62	87.95	87.89	88.02 ²⁷	88.84 ²³	89.05
63	88.27	88.38	88.17 ²⁷	88.68 ²³	89.15
64	88.42	88.55	88.53 ²⁸	88.15 ²³	89.10
65	89.62	89.77	89.15 ²⁹	89.33 ²⁴	89.72
66	90.49	91.63	90.53 ³⁰	90.35 ²⁹	90.46
67	90.77	90.79	90.05 ²⁷	90.47 ²³	90.30
68	90.26	90.12	89.13 ²⁷	89.71 ²³	89.63
69	89.20	89.09	88.21 ²⁹	89.43 ²³	89.90
70	90.00	90.05	89.34 ²⁹	90.04 ²³	89.96
71	90.63	90.74	90.80 ³⁰	90.96 ²⁷	91.15
72	90.24	90.56	90.30 ²⁹	91.38 ²³	90.96

Berm	Ditch	Stk	3' out	5
89.60 ⁹	89.03 ⁵	89.95	89.74	090:28
88.90 ¹⁰	88.07 ⁵	88.77	88.18	88.76 88.105
88.73 ⁸	88.20 ⁶	88.65	88.13	88.50 88.272
88.97 ⁷	89.00 ⁵	89.12	88.74	
90.20 ⁸	90.19 ⁴	90.75	90.20	153
91.15 ⁷	90.64 ⁴	91.76	91.23	88.32
92.03 ¹⁰	92.80 ¹⁰	93.01	93.14	88.25
92.64 ¹¹	92.06 ⁸	93.10	93.21	88.21
91.52 ¹²	91.43 ¹²	92.83	92.89	
90.99 ¹¹	90.58 ⁸	91.12	91.93	89.32
90.25 ¹⁰	90.00 ⁷	90.14	90.10	
90.11 ¹¹	89.94 ⁶	89.71	89.63	89.42
89.21 ¹⁰	88.52 ⁶	88.54	88.31	
89.06 ⁸	88.17 ⁴	87.94	87.93	89.31
88.65 ⁹	87.82 ⁴	87.81	87.71	
88.82 ⁹	89.15 ⁶	88.19	87.95	
88.79 ⁹	88.45 ⁵	88.56	88.34	
89.50 ¹⁰	89.22 ⁶	89.95	89.90	
90.30 ¹¹	90.52 ⁷	91.06	90.55	
90.38 ¹⁰	90.09 ⁷	90.27	90.28	
89.63 ¹⁰	88.99 ⁵	89.45	89.46	
89.31 ¹¹	88.31 ⁷	88.60	88.50	
89.99 ¹²	89.81 ⁷	90.68	90.75	
91.47 ¹³	91.73 ⁸	92.93	92.78	
91.32 ¹³	91.10 ⁸	92.25	92.10	

27
 88.32
 88.25
 88.21
 89.32
 89.42
 89.31
 88.27
 88.36
 69+15
 91.67

Stations

	8' out	Stk	Ditch	Burn	Q
73	89.80	90.33	90.15 ²⁹	90.95 ²²	90.50
74	89.47	90.07	89.69 ²⁸	90.44 ²⁴	90.35
75	89.23	89.58	89.58 ²⁷	90.16 ²⁴	90.35
76	89.19	89.46	89.29 ²⁷	90.20 ²⁴	90.35
77	90.29	90.34	90.15 ²⁹	90.12 ²⁴	90.64
78	91.42	91.77	91.14 ²⁹	91.43 ²²	91.50
79	93.40	93.52	92.45 ²⁷	92.76 ²²	92.60
80	93.59	93.52	92.61 ²⁷	93.50 ²²	93.57
81	93.76	93.64	92.80 ²⁷	93.50 ²¹	93.57
82	93.81	93.72	93.40 ²⁷	93.75 ²¹	93.70
83	95.33	95.47	94.88 ²⁸	95.22 ²³	95.20
84	95.08	95.84	94.82 ²⁸	95.38 ²³	95.52
85	92.96	93.65	92.95 ²⁷	93.49 ²²	93.55
86	91.15	91.74	91.52 ²⁷	92.10 ²²	92.10
87	91.15	91.54	91.86 ²⁷	91.20 ²²	91.00
88	90.38	90.65	89.92 ²⁷	90.01 ²¹	90.02
89	89.05	89.21	89.02 ²⁷	89.33 ²²	89.44
90	87.57	88.36	88.34 ²⁷	88.79 ²³	88.97
91	87.50	87.59	87.78 ²⁷	88.26 ²³	88.35
92	87.75	87.50	87.50 ²⁷	87.73 ²⁴	87.53
92+41	87.85	87.91	87.64 ²⁷	87.29 ²⁴	87.50

71.50' E
87.40

So

Burn	Ditch	Stk	8' out
90.13 ¹²	90.03 ⁹	91.76	91.54
90.45 ⁵	90.45 ⁹	91.10	90.83
90.10 ¹³	89.69 ⁹	90.19	89.93
92.27 ¹³	89.72 ⁹	89.80	92.11
90.66 ¹²	90.06 ⁹	92.42	92.88
91.46 ¹²	91.42 ⁹	91.92	92.40
92.90 ¹¹	92.62 ⁹	93.07	93.34
93.15 ¹¹	92.73 ⁶	92.82	92.15
93.35 ¹¹	92.65 ⁷	92.35	92.18
93.75 ¹³	92.85 ⁹	92.80	92.61
95.26 ¹³	94.49 ⁹	94.50	94.43
95.38 ¹³	95.16 ⁸	96.17	96.26
93.58 ¹⁴	93.95 ⁹	94.30	94.58
92.15 ¹¹	91.92 ⁹	92.37	92.28
91.23 ¹¹	91.68 ⁵	91.62	91.76
90.81 ¹²	90.00 ⁵	91.18	91.16
89.48 ¹²	88.66 ⁶	89.46	89.49
89.03 ¹³	88.14 ⁶	88.29	89.06
88.44 ¹¹	88.02 ⁵	88.41	88.35
88.25 ¹⁰	87.10 ⁴	87.96	87.50
87.87 ¹⁴	87.30 ⁸	87.71	87.48

0 90.42
0 94.24
0 92.22

B.M.

May 2+50
12' above stumps

al. 89.54

B.M. on end
of the SW wing
of bridge
al. 89.02

40

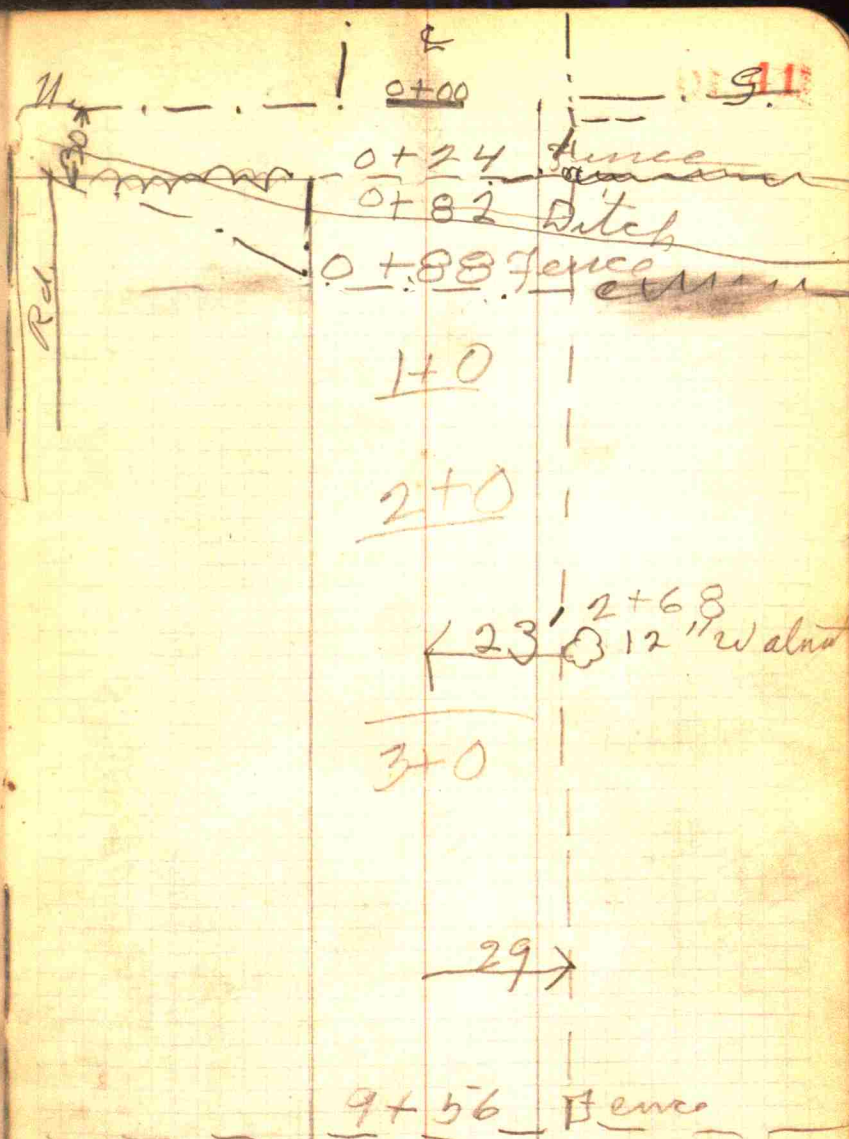
Omer Peak Rd.
Union Twp.

Ditch N 113° E

421 feet from
stones on north of
Road.

0+88 Fence N + S. 0+0
Fence N and follows
ditch - no fence south

Gateway So side
16' x 12" Culvert at 0+00
on Peak Rd.



71.

4

13+16 Fence S.

Road

10+32

2 mi Run e. of
Road

13+48

Fence

STA	3' OUT	17' STK	DITCH	10' BERM	L	10' BERM	DITCH	17' STK	3' OUT
1		88.20		88.26	88.40	88.33		88.27	
2		88.94		88.80	88.73	88.84		88.87	
3		89.25		89.42	89.32	89.40		89.43	
4		88.90		89.27	89.17	89.24		89.30	
5		88.84		88.92	89.10	89.19		89.23	
6		89.11		88.76	88.97	89.11		89.28	
7		89.36		89.28	89.26	89.21		89.50	
8		88.82		88.62	88.40	88.53		88.56	
9		87.79		87.73	87.56	87.30		87.26	
10		87.99		87.68	87.32	87.30		87.13	
11		87.91		87.99	88.00	87.77		87.73	
12		88.57		88.56	88.66	88.67		88.53	
13		88.92		88.80	88.80	88.85		88.83	
13+32			25'	89.88	89.72		2.51	89.67	

El. 84.51 Bot of Ditch

El. 89.52 Bank

⊙ 88.19

S
48
STA

3'OUT STK DITCH BERM

←

BERM

DITCH STK 3'OUT

n. 49

Leah Road 1332'

5094 Cu yds Exc @ 35¢
 2126 Tons Stone (1710 yds) @
 3080 Tons Gravel (2054 yds)
 112' x 10" Pipe 1.25
 126' x 12" " 1.50
 106' x 18" " 2.50
 26' x 24" " 3.50
 48' x 10" and 12" rebar 30¢
 59.74 Cu yds loka. Conc.

46 1/2 yds Conc @ 14.00
 600 yds Exc @ 35¢
 306 Tons Stone (245 yds) 3.00 Tm
 444 Tons Gravel (296 yds) 2.25 Tm
 48' x 12" @ 1.50
 2 Std Basins @ 30.00
 1250' x 8" D. Tile @ 17¢
 28' x 8" V.T @ 50¢
 2 Eels + 1 Y @ 1.00
 703 # steel 5¢
 15 Trusses 10' span 5.50
Expenses

Est Cost Bennett Road

178190
 3.00 Tm = 6378.00
 @ 2.25 Tm = 6930.00
 = 140.00
 = 187.00
 = 265.00
 = 91.00
 = 14.40
 14.00 = 836.36

16635.66

1500.00 Expense

Total 18135.66 = 18200⁰⁰

= 651.00
 = 210.00
 = 918.00
 = 999.00
 = 72.00
 = 60.00
 = 212.50
 = 14.00
 = 3.00
 = 35.15
 = 482.50
 = 450.00
 Total 3707.15

3700⁰⁰
 200⁰⁰
 4900⁰⁰

Est. of Leak Road on

76½ Cu yds Conc	@	\$14.00
770 Cu yds Exc	@	.35
403 Tons Stone	@	3.00
584 Tons unhd gravel	@	2.25
48' x 12" C.M. pipe	@	1.50
2 Std basins	@	30.00
16 70' x 8" D. tile	@	.17
28' x 8" V.T	@	.50
2-8" Elst 1Y	e	1.00
950# steel	@	.05
17 Trusses for 10' span	@	5.50
Straightening channel of old ditch 640 yds	@	.35
Expenses		

Total

old route 1753'

1071.00
269.50
1209.00
1314.00
72.00
60.00
283.90
14.00
3.00
47.50
93.50
224.00
450.00

 5111.40
Bonds 5100⁰⁰

22
 2nd ant. *Zill*

0 +	8847	8798	0'-6"
1 +	8833	8843	0'-1 $\frac{1}{4}$ "
2 +	8843	8923	0'-9 $\frac{1}{2}$ "
3 +	8853	8956	1'- $\frac{1}{2}$ "
4 +	8863	8916	0'-6"
5 +	8873	8915	0'-5"
6 +	8883	8953	0'-8 $\frac{1}{2}$ "
7 +	8863	8966	0'-11 $\frac{1}{2}$ "
8 +	8843	8897	0'-6 $\frac{1}{2}$ "
9 +	8823	8796	0'-3 $\frac{1}{4}$ "
10 +	8803	8795	0'-1"
11 +	8833	8799	0'-4"
12 +	8863	8861	0'-0 $\frac{1}{4}$ "
13 +	8893	8883	0'-1 $\frac{1}{4}$ "
13 +	8902		

58	our Grade	El. Lth	Full cut	cut Fill
92	8855	8740	1'-2"	
91	8875	8775	1'-0"	
90	8895	8832	0'-8"	
89	8915	8944		0'-3 1/2"
88	8982	9063		0'-10"
87	9100	9124		0'-3"
86	9217	9168	0'-6"	
85	9335	9353		0'-2"
84	9433	9552		1'-2"
83	9414	9548		1'-4"
82	9375	9424		0'-6"
81	9336	9440		0'-1 1/4"
80	9397	9407		0'-1 1/4"
79	9268	9377		1'-2"
78	9219	9194	0'-3"	
77	9180	9050	1'-4 1/4"	
76	9141	8949	1'-11"	
75	9102	8967	1'-4"	
74	9063	9025	0'-4 1/2"	
73	9024	9045		0'-2 1/2"
72	8994	9051		0'-7 1/2"
71	8964	9084		1'-2 1/2"
70	8934	9037		1'-1 1/2"
69	8904	8983		0'-10"
68	8916	9080		1'-8"

	Old Grade.	El. Lth	Full cut	cut Fill
67	8929	9115		1'-1 1/2"
66		Road		
65	8954	8983		0'-3 1/2"
64	8966	8879	0'-11	
63	8979	8863	1'-2"	
62	8992	8824	1'-8"	
61	9004	8857	0'-4 1/2"	
60	9029	8901	1'-2 1/2"	
59	9054	9023	0'-4 1/2"	
58	9079	9041	0'-4 1/2"	
57	9104	9049	0'-1 1/2"	
56	9129	9243		1'-1 3/4"
55	9154	9253		1'-0"
54	9179	9270		0'-11"
53	9139	9146		0'-1"
52	9099	9124		0'-3"
51	9059	8954	1'-1 1/2"	
50	9019	8881	1'-4 1/2"	
49	8979	8885	0'-11 1/4"	
48	9008	9016		0'-11"
47	9037	9019	0'-2"	
46	9066	8966	1'-0"	
45	9095	8949	0'-4 1/2"	
44	9124	9033	0'-11"	
43				
42	9182	9273		0'-11"

	Old Grade	Old Elev.	Fill Cut.	cut Fill
41	9211	9429		2'-2"
40	9240	9451		2'-1 1/2"
39	9269	9337		0'-8"
38	9306	9425		1'-2"
37	9343	9267	0'-9 1/4"	
36	9380	9519		1'-4 1/2"
35	9417	9425		0'-9 1/2"
34	9454	9308	1'-5 1/2"	
33	9491	9400	0'-11"	
32	9515	9516	Grade	
31	9539	9639		1'-0"
30	9563	9736		1'-9"
29	9587	9726		1'-4 1/2"
28	9611	9738		1'-3"
27	9635	9709		0'-8"
26	9659	9605	0'-6 1/2"	
25	9683	9601	0'-10"	
24	9707	9675	0'-5 1/2"	
23	9731	9800		0'-8"
22	9755	9750	0'-0 1/2"	
21	9745	9729	0'-8"	
20	9735	9694	0'-5"	
19	9725	9673	0'-5"	
18	9715	9809		0'-11 1/2"
17	9705	9826		1'-2 3/4"

	Old Grade	Old Elev.	Fill Cut.	cut Fill
16	9695	9861		1'-2 8"
15	9685	9802		1'-2"
14	9675	9752		0'-9 1/4"
13	9640	9808		2'-1 1/2"
12	9605	9898		2'-11 1/2"
11	9570	9674		0'-11 1/2"
10	9535	9512	0'-2 3/4"	0'-5 1/4"
9	9500	9368	1'-3 3/4"	
8	9486	9364	1'-3 1/2"	
7	9472	9314	1'-7"	
6	9458	9627		0'-9"
5	9444	9498		0'-5 3/4"
4	9430	9368	0'-7 3/4"	
3	9440	9486		0'-5 1/4"
2	9450	9520		0'-8 1/2"
1	9460	9466		0'-3"

	Cl. 226 let	new gd.	
0+30	8900	8446	4.54
1+0	8795	8453	3.42
2+0	8908	8463	4.45
3+0	8955	8473	4.82
4+0	8950	8483	4.67
5+0	8923	8493	4.30
6+0	8935	8503	4.32
7+0	8938	8513	4.25
8+0	8951	8523	3.28
9+0	8738	8533	2.05
10+0	8754	8543	2.11
11+0	8906	8553	2.53
12+0	8868	8563	3.05
13+0	8894	8573	3.21

$$\begin{array}{r} 8900 \\ 8446 \\ \hline 454 \end{array}$$

$$\begin{array}{r} 8963 \\ 70 \\ 10 \\ \hline 7.00 \end{array}$$

$$\begin{array}{r} 8851 \\ 8523 \\ \hline 3.28 \end{array}$$

$$\begin{array}{r} 8738 \\ 8533 \\ \hline 2.05 \end{array}$$

$$\begin{array}{r} 8935 \\ 8503 \\ \hline 4.32 \end{array}$$

$$\begin{array}{r} 8795 \\ 8453 \\ \hline 342 \end{array}$$

$$\begin{array}{r} 8938 \\ 8513 \\ \hline 4.25 \end{array}$$

$$\begin{array}{r} 8754 \\ 8543 \\ \hline 2.11 \end{array}$$

8412

$$\begin{array}{r} 8806 \\ 8553 \\ \hline 2.53 \end{array}$$

$$\begin{array}{r} 8908 \\ 46 \\ \hline 8463 \end{array}$$

$$\begin{array}{r} 8463 \\ 4.45 \\ \hline 8863 \\ 8563 \end{array}$$

$$\begin{array}{r} 8955 \\ 8473 \\ \hline 4.82 \end{array}$$

$$\begin{array}{r} 8950 \\ 8483 \\ \hline 4.67 \end{array}$$

$$\begin{array}{r} 8493 \\ 8923 \\ \hline 4.30 \end{array}$$

Harry Stewart.

SE corner 14.38 ch from
SE. Corner of lot.

S. Line 4.04

N 00° - 3.14 ch

S 89° - W

AZ

#2 180°-26

$$\begin{array}{r} 12 \overline{) 66} \\ \underline{60} \\ 66 \\ \underline{60} \\ 66 \end{array}$$

$$\begin{array}{r} 1.82 \\ .66 \\ \hline 1086 \\ 1086 \\ \hline 11946 \end{array}$$

3.14

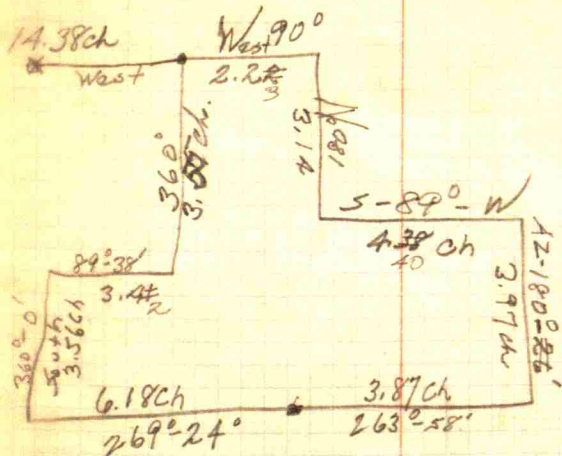
$$\begin{array}{r} 66 \\ 66 \\ 66 \\ 14 \\ \hline 221 \end{array}$$

$$\begin{array}{r} 1.81 \\ \hline 66 \overline{) 120} \\ \underline{66} \\ 540 \\ \underline{528} \\ 120 \end{array}$$

$$\begin{array}{r} 3.07 \\ 2.27 \\ \hline 614 \\ 614 \\ \hline 6811 \end{array}$$

$$\begin{array}{r} 3.70 \\ 5.4 \\ \hline 10.00 \\ 37 \end{array}$$

$$\begin{array}{r} 16.5 \\ 16.5 \\ \hline 825 \\ 990 \\ 165 \\ \hline 27225 \end{array}$$



Dean Gravel Pile

Stk. line

50' in

0+0	12.83	13.00
0+50	13.20	13.60
1+0	14.57	14.02
1+50	14.86	13.81
2+0	15.65	14.34 ✓
2+50	16.48	14.50 ✓
3+0	16.95	14.70 ✓
3+50	16.40	14.20
4+0	14.94	13.37
4+50	14.07	12.95
5+0	12.67	13.00
5+50	13.21	12.65
6+0	13.15	<u>13.35</u>

B.M. on root of tree
 150' NE of boom. Root on
 So. side of tree - EL. 10.00

14.07

47.70

40.20

A	53.00	B	47.52	C	38.70
A1	47.60	B1	43.50	C1	40.90
A2	40.00	B2	37.00	C2	33.72
A3	32.91	B3	32.58	C3	29.30
A4	27.00	B4	26.58	C4	24.66
A5	20.50	B5	19.70	C5	18.42
A6	14.94	X B5+9W	14.19	X C5+9W	14.24
X A6+3W	14.17	B7	46.21	C7	40.13
X A6+3S	14.25	B8	39.65	C8	35.50
A7	48.00	B9	35.40	C9	30.10
A8	44.05	B10	31.12	C10	25.62
A9	39.80	B11	27.25	C11	21.72
A10	37.05	B12	21.00	C12	17.42
A11	30.22	B13	14.83	C12+5E	14.82
A12	22.43	B13+5S	14.41		
A13	15.96	B13+3E	13.52		
A13+7E	13.03				

D	33.30	E	26.80
D1	31.93	E1	25.60
D2	28.40	E2	22.62
D3	24.53	E3	19.37
D4	20.00	E4	18.95
D5	18.32	E5	14.95
X D5+9W	14.29	X E5+7W	14.20
X D11+8S	13.40	X E5+3S	14.11
D7	33.40	X E10+7S	13.71
D8	30.51	X E10+9E	13.34
D9	25.96	E7	26.40
D10	21.00	E8	24.82
D11	16.44	E9	20.81
D12	14.44	E10	17.14

78

① 14.06

① 15.52

① 21.68

F	19.35	H	46.51	I	39.75
F1	18.89	H1	44.43	I1	38.50
F2	16.95	H2	35.00	I2	33.50
F3	15.61	H3	31.22	I3	28.00
F4	15.90	H4	24.90	I4	21.50
X F4+8W	14.08	H5	18.91	I5	16.63
X F4+9S	13.88	X H5+9W	14.19	X I5+5W	14.00
X F3+9S	13.72	H7	44.10	I7	38.00
X F2+6S	13.59	H8	39.95	I8	34.80
X F1+9S	13.51	H9	36.15	I9	29.80
X F+9S	13.78	H10	32.00	I10	25.00
X F7+9S	14.20	H11	27.00	I11	22.00
X F8+8S	14.32	H12	21.50	I12	17.73
X F9+4S	13.66	H13	15.80	I13	13.75
X F9+6E	13.60	X H13+6E	12.99	X I13+5N	12.66
F9	15.48			X I13+3E	12.87
F8	18.60				
F7	19.70				

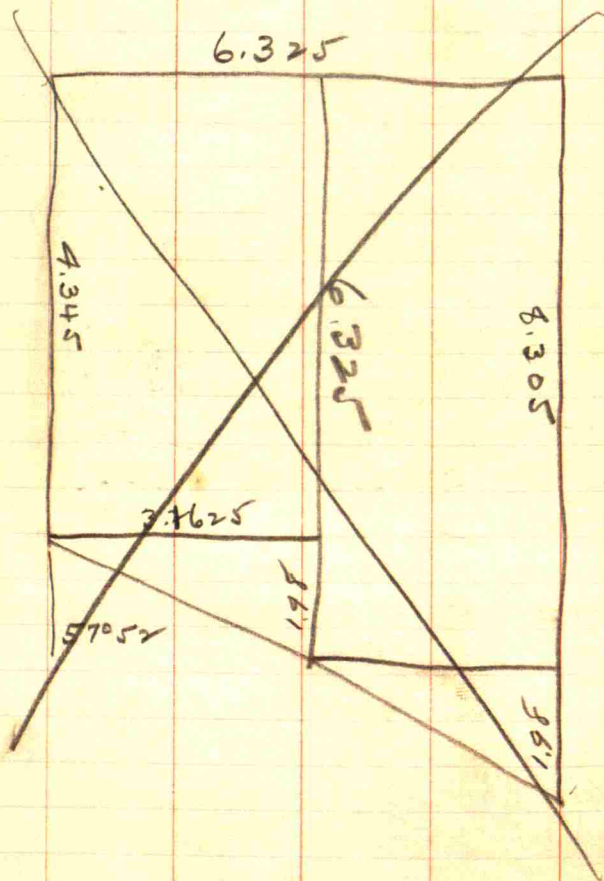
~~29.51~~

31.43

79

24.75	K	L	18.00
24.53	K1	L1	18.18
23.00	K2	L2	17.13
19.65	K3	L3	14.77
14.28	K4	X L3+5W	13.15
13.73	X K4+4W	X L3+3N	13.13
13.44	X K4+5N	X L2+7N	13.37
23.75	K7	X L1+9N	13.10
22.75	K8	X L+9N	12.49
19.10	K9	X L7+8N	12.40
15.35	K10	X L8+5N	12.46
12.84	X K10+5N	X L9+5N	12.49
12.62	X K10+7E	X L9+5E	12.63

J	32.65	L7	16.83
J1	31.00	L8	15.30
J2	28.42	L9	14.56
J3	23.70		
J4	18.24		
X J5	13.90		
J7	30.55		
J8	29.00		
J9	23.50		
J10	19.11		
J11	16.06		
X J12	13.30		
X J11+7N	12.58		



$$\begin{array}{r}
 3.1625 \\
 4345 \\
 \hline
 126525 \\
 26500 \\
 4875 \\
 16500 \\
 \hline
 1.37379025 \\
 \hline
 31625 \\
 6325 \\
 \hline
 158125 \\
 63250 \\
 189750 \\
 \hline
 5 \times 180025
 \end{array}$$

$$\begin{array}{r}
 3.1625 \\
 .99 \\
 \hline
 284625 \\
 284625 \\
 \hline
 3130875 \\
 \hline
 1.37 \\
 2.00 \\
 63 \\
 \hline
 4.00
 \end{array}$$

$$\begin{array}{r}
 8960 \\
 5952 \\
 \hline
 3208
 \end{array}$$

$$\begin{array}{r}
 .62811 \\
 3.1625 \\
 \hline
 314055 \\
 125622 \\
 376866 \\
 62811 \\
 188433 \\
 \hline
 1.986397875
 \end{array}$$

$$\begin{array}{r}
 6.325 \\
 1.98 \\
 \hline
 4.345
 \end{array}$$

$$\begin{array}{r}
 6.325 \\
 1.98 \\
 \hline
 8.305
 \end{array}$$

$$\begin{array}{r}
 6 \overline{) 4.0}
 \end{array}$$

Edward F. Frankum
17-16-2E

5.00
1.83

6.83
1.83

8.66

5.856

West line
Sec 17

50

5

8.66

2.925

2.875

S 57° 52' E

E State Rd 34

6.91

2.928

1.94

2.925
915

1.4675

2.925
2925

2.6325

2.6325
26325

2.676375

2.676375
2676375

2.5354

2.5354
1.5354

2.002

2.002
2002

3.9952

2.925
1.4625

6.83

62811
2925

314055
125622
565299
175622

183742175

3.9952

2.925
683

8.775
23400
17550

1.997775

62811
2875

62811
2875

304055
439677
502448
175622

180581675

2875
90

358750
25875

51750

5
2875
5

1.4375
5175

2875
6.80

230000
17250

1.955000
1.4375
5175

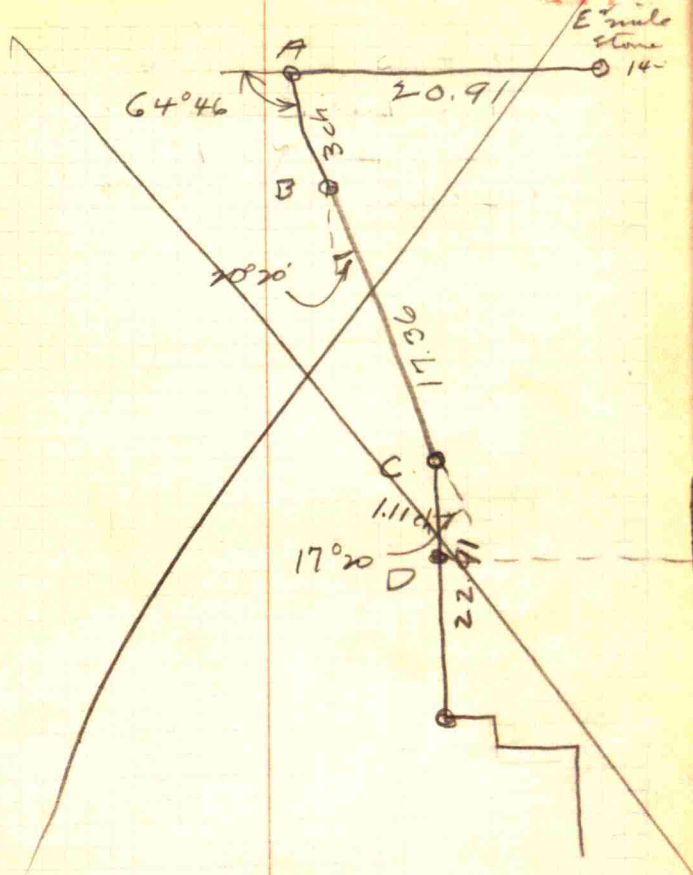
3.9100

680 $\sqrt{.09.00}$

110

~~Martha Cox.~~~~A - S of L $64^{\circ}46'$~~ ~~B - S of L $20^{\circ}20'$~~ ~~C - S of R $17^{\circ}20'$~~ ~~C to D. $1.11ch.$~~

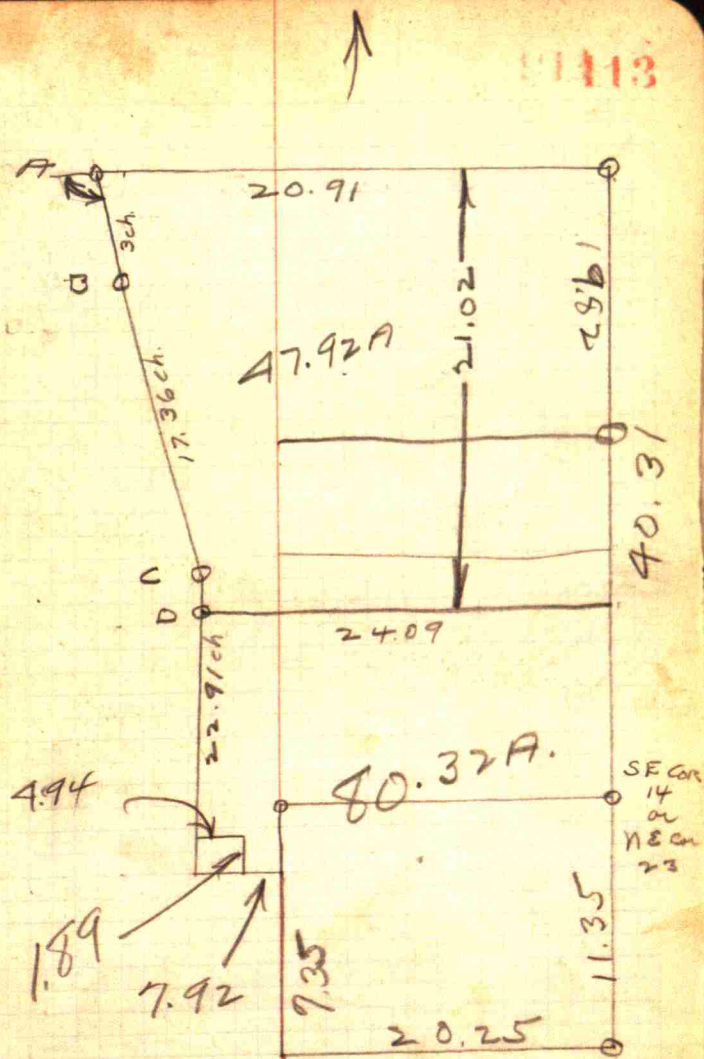
111



Martha Cox

A - Def L - $64^{\circ}46'$
 B - Def L - $20^{\circ}20'$
 C - Def R - $17^{\circ}20'$
 Ctod - 1.11 ch.

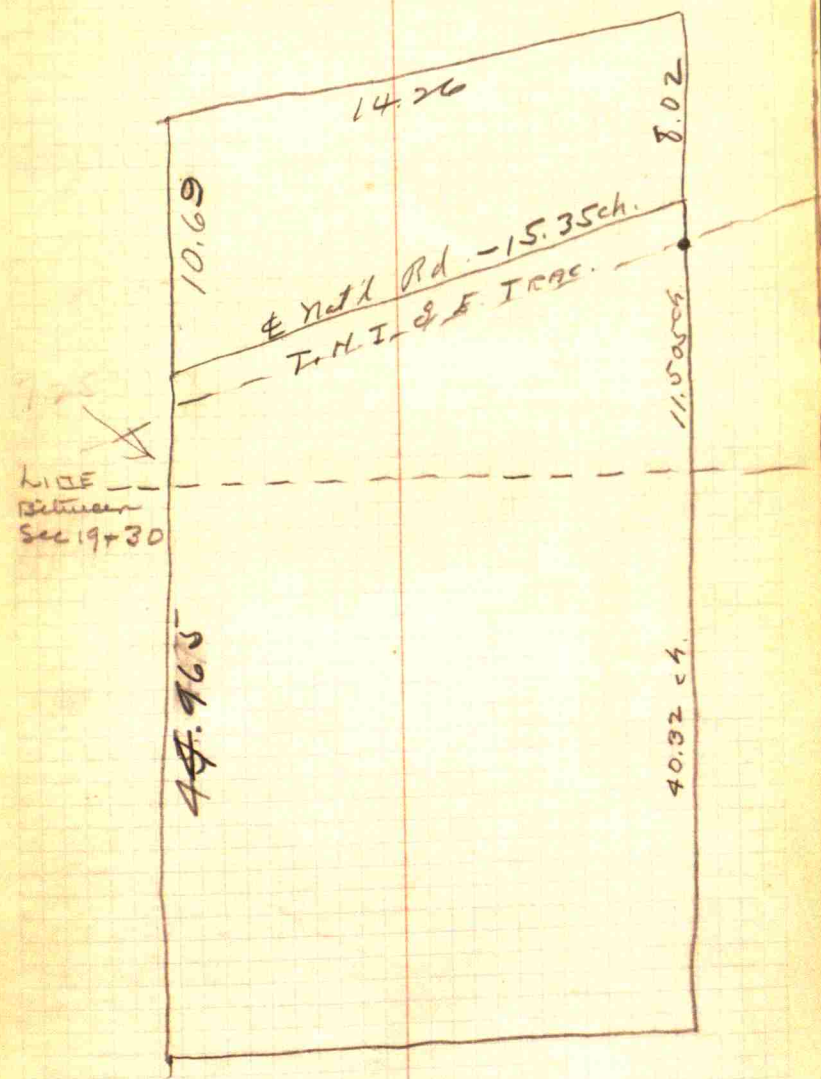
14 & 23 - 14 - 1E



11114 PAUL SMITH

19 & 30 - 15 - 2E

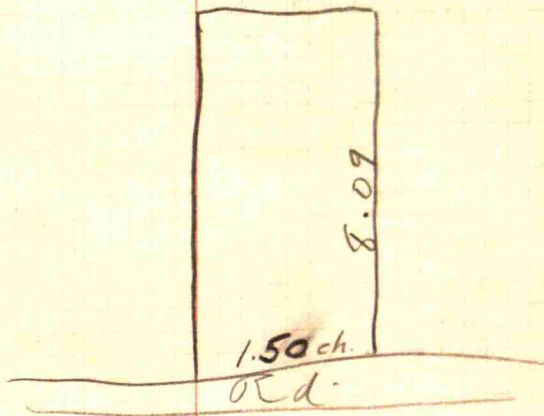
11115



$$\begin{array}{r}
 809 \\
 \underline{150} \\
 40450 \\
 \underline{809} \\
 121350
 \end{array}$$

Mrs. F. a. Butler

01417



HANLEY STREET.

W-SIDE FROM NO. END.

2' W. of Walk

2' E.

Ditch 6' E. sk

☐

0+00	9.45	8.89	8.49	8.75	9.68
0+50	9.57	8.96	8.68	8.99	9.75
1+0	9.90	9.36	8.86	9.00	10.01
1+50	9.97	9.51	8.87	9.10	10.12
2+0	9.90	9.44	8.96	9.33	10.06
2+50	9.81	9.32	8.68	9.14	9.79
3+0	9.29	8.88	8.24	8.64	9.20
3+25	8.78	8.25	7.83	8.24	8.95
3+70	8.40	7.86	7.33	7.56	8.71
4+0	8.06	7.70	7.09	7.36	8.34
4+50	8.12	7.71	6.98	7.39	8.13
5+0	7.44	7.12	6.85	7.10	7.53
5+50	7.15	6.52	6.11	6.48	7.15
6+0	7.16	6.78	6.37	6.80	7.24
6+30	6.80	6.33	6.18	6.70	6.97
6+75	6.91	5.87	5.85	6.36	7.24
7+0	7.00	6.51	6.00	6.43	7.31
7+50	7.50	7.02	6.50	6.90	7.82
8+05	7.68	7.11	6.94	7.17	7.93
8+24	7.65	7.22	7.03	7.18	7.95
8+50	7.72	7.56	7.54	7.60	7.94
9+0	7.32	6.92	6.94	6.94	7.23
9+50	6.96	6.30	5.96	6.25	6.41
9+67	5.98	5.78	5.65	5.77	5.95

walk

5.65
Ditch
line

5.77
curb

7.12
5.78
1.34

6.85
5.78
1.07

6.5
26.0
32.0
68.0

6.5
32.5

6.5
5.15
1.59
9.0
9.62

5'W	Ditch	1'W	1. E. of line
9.32	8.80	9.11	10.00
9.00	8.75	9.21	9.88
9.42	9.00	9.62	10.31
9.76	8.95	9.54	10.18
9.38	8.90	9.45	10.20
9.08	8.59	9.10	9.89
8.41	8.32	8.76	9.42
8.13	7.95	8.34	9.10
7.58	7.51	7.92	8.65
7.26	7.24	7.58	8.26
7.76	6.23	7.84	8.32
6.62	6.06	7.28	7.76
6.17	6.00	6.56	7.16
6.05	5.96	6.45	7.08
6.38	5.97	6.40	7.09
6.49	6.12	7.36	7.95
6.57	6.22	7.54	8.25
7.10	6.58	7.77	8.80
7.40	7.35	7.59	8.26
7.28	7.28	7.57	8.00
7.65	7.37	7.53	8.08
6.82	6.70	7.00	7.66
6.20	6.10	6.27	6.79
6.02	5.87	6.06	6.31

walk

5.87
Ditch
line

walk

B.M. -
E.L. 9.06.
on arrowhead
on top of fine
flag.
W. side of
Sta. 5+65

6.11
4.55
1.56

5+08
FL. 5" Tall
in E. side ditch
5.93

5.85 - E.L.
in E. side ditch
5+70
W. side ditch
6.10

Sta 9+90
4.55
Ditch line
of Natl. Rd.
N. side

	2'-TOP STK	RAINES 6d @ 2' W	ST. DITCH	- E. SIDE	E	W. DITCH	Gd. on W side
0+0	7.45	6.96	7.05	7.15	7.48	7.05	7.17
0+50	7.92	7.05	7.22	7.32	7.46	6.70	6.85
1+0	7.80	7.60	6.75	7.15	7.75	6.55	6.96
1+50	8.12	7.76	6.66	6.95	7.65	6.60	7.28
2+0	8.28	7.18	6.42	6.36	7.44	6.48	7.25
2+50	7.84	7.04	6.44	6.65	7.38	6.21	6.83
3+0	8.03	7.21	6.25	6.54	7.35	6.35	7.00
3+25	7.62	6.91	6.46	6.57	7.21	6.29	7.05
3+70	7.30	6.60	6.40	6.42	7.29	6.51	6.52
4+0	7.12	6.65	6.14	6.38	7.20	6.43	7.01
4+50	6.98	6.57	6.08	6.28	7.21	6.31	7.32
5+0	6.97	6.65	6.11	6.15	7.25	5.98	6.72
5+50	6.94	6.44	6.01	6.20	6.91	5.61	6.41
6+0	7.25	6.90	5.96	7.00	6.71	5.42	6.10
6+30	7.25	6.91	5.65	6.32	6.41	5.36	5.80
6+75	6.61	6.15	5.15	5.75	6.11	4.80	5.66
7+0	6.15	5.68	5.15	5.40	6.00	4.82	5.50
7+50	5.45	5.10	4.94	4.93	5.49	4.50	5.14
8+05	5.35	4.76	4.60	4.56	5.10	4.26	4.55
8+24	5.24	4.69	4.54	4.74	5.10	4.21	4.27
8+50	5.23	4.82	4.32	4.80	5.10	4.53	4.50
9+0	5.39	5.01	4.40	4.89	4.76	3.60	4.07
9+50	5.26	4.97	4.12	4.85	4.45	3.42	4.01
9+68	4.09	3.87	3.90	3.89	4.15		3.60

2.90, EL. of
10" tile under
sidewalk

utter line of
intersection

3.60
utter line
W. side
intersection

FL. Tile 6" - 5.18
on E. side of
Sta 3+80

B.M. From
Hanley St on
Fire plug.
EL. 9.06

3.30 - EL. of
utter line on No.
side of Natl at W. side
of intersection

2.52, EL. F.L. of tile
under W. sidewalk