

BETTER →

158

MINING
TRANSIT BOOK
363 A

58

Base Line starts on
S-side

A
B
C
D
E
F
G
H^{TOP}
I
J
K
L
M
N

B.M. Cl. 10.00

Ground W 8.90

H	40.90
H ₁	36.51
H ₂	31.65
H ₃	25.57
H ₄	21.54
H ₅	15.22
H ₆	11.56
H ₆ +75	9.98
H ₇	8.96
H ₇ +75	8.32
H ₈	35.41
H ₉	28.35
H ₁₀	23.18
H ₁₁	17.09
H ₁₂	11.71
H ₁₃	8.80
H ₁₃ +7E	6.82
H ₁₃ Ground	6.70

Ground 8.99

G	35.25 ³
G ₁	33.40
G ₂	27.62
G ₃	22.80
G ₄	17.17
G ₅	12.99
G ₅ +7W	9.70
G ₈	31.92
G ₉	26.80
G ₁₀	21.30
G ₁₁	16.05
G ₁₂	10.76
G ₁₃	7.00
G ₁₃ Ground	7.00

F Ground	7.63	E Ground	670
F	3021	E	25.03
F ₁	2894	E ₁	25.15
F ₂	24.24	E ₂	20.20
F ₃	19.80	E ₃	17.23
F ₄	13.55	E ₄	13.05
F ₅	8.97	E ₅	7.70
F ₅ +6W	8.05	E ₅ +3W	6.92
		E ₈	24.15
F ₈	2795	E ₉	19.91
F ₉	23.45	E ₁₀	16.19
F ₁₀	19.20	E ₁₁	10.61
F ₁₁	13.36	E ₁₂	6.25
F ₁₂	8.15	E ₁₂ +9E	5.62
F ₁₂ +3E	6.34	E ₁₂ +8S	5.52
F ₁₂ Ground	6.34	E ₁₂ Ground	5.59

D Ground 675		C Grounds	5.20
D	20.00	C	15
D ₁ →	20.21	C ₁	15.78
D ₂	17.84	C ₂	13.62
D ₃	12.57	C ₃	11.16
D ₄	11.67	C ₄	7.77
D ₅	8.17	C ₅	6.84
D ₅ +3W	6.92	C ₅ +3W	6.18
		C ₅ +5S	5.77
D ₈	18.82	C ₈	12.38
D ₉	15.29	C ₉	11.88
D ₁₀	11.35	C ₁₀ 6.66	6.66
D ₁₁	5.94	C ₁₀ +1E	5.11
D ₁₁ Ground	5.15	C ₁₀ Ground 47R	

020.71		A Brand	445	I Brand	8.55	J Brand	7.18
B0 Brand	493	A	531	I	3332	J	2565
B1	921	A ₁	544	I ₁	3249	J ₁	2565
B ₂	957	A ₂	600	I ₂	3018	J ₂	2460
B ₃	875	A ₃	552	I ₃	2568	J ₃	2124
B ₄	722	A ₃ +7N	485	I ₄	2213	J ₄	18.05
B ₄ +SW	607	A ₃ +4S	433	I ₅	1620	J ₅	14.65
B ₄ +6S	515	A ₂ +7S	447	I ₆	11.50	J ₆	11.17
B ₈	482	A ₁ +2S	509	I ₇	938	J ₇	1909
B ₈	812	A+1S	452	I ₈		J ₇ +9W	7.34
B ₉	665	A ₈	481	I ₉	3095	J ₇ +8N	8.96
B ₉ +7E	585	A ₈ +1S	440	I ₉	27.11	J ₈	2559
B ₉ +6S	503	A ₈ +6E	459	I ₁₀	21.43	J ₉	2349
B ₉ Brand	440	A ₈ Brand S	425	I ₁₁	1697	J ₁₀	1844
" S				I ₁₂	1229	J ₁₁	1290
				I ₁₃	787	J ₁₂	10.20
				I ₁ +2E	712	J ₁₃	7.40
				I ₁₃ Brand	6.29	J ₁₃ Brand	6.99

brand	9.30	L brand	9.52
FK	19.09	L	1319
K ₁	18.90	L ₁	1259
K ₂	19.10	L ₂	13.52
K ₃	14.95	L ₃	1038
K ₄	13.21	L ₄	9.51
K ₅	13.02	L ₄ +6W	9.52
K ₅ +6N	10.80		
K ₆	10.30	L ₆	12.50
K ₆ +2W	9.87	L ₉	12.85
K ₆ +9N	9.30	L ₁₀	11.41
		L ₁₁	11.04
K ₈	18.96	L ₁₂	9.15
K ₉	18.33	L ₁₂ +6E	7.80
K ₁₀	15.50		
K ₁₁	12.43	L ₁₂ brand	7.69
K ₁₂	9.57		
K ₁₃	7.93		
K ₁₃ +7N	7.75		
K ₁₃ +1E	7.47		
K ₁₃ brand	7.27		

m brand	6.33	N brand	4.79
M	9.33	N	6.42
M ₁	7.86	N ₁	5.68
M ₂	7.95	N ₁ +3W	5.37
M ₂ +8N	5.08	N ₁ +8N	4.92
M ₃	6.81	N ₈	7.33
M ₃ +8N	4.76	N ₈ +3N	6.91
M ₄	6.59	N ₈ +7E	7.10
M ₄ +8N	5.07		
M ₄ +4W	6.41	N ₈ brand	6.45
M ₉	9.38		
M ₉	9.90		
M ₉ +6N	7.81		
M ₁₀	8.18		
M ₁₀ +7N	7.20		
M ₁₁	8.47		
M ₁₁ +5N	7.25		
M ₁₂	7.82		
M ₁₁ brand C.	7.50		
M ₁₁ n brand	6.69		

@ Sound

5.18

0

5.31

0+6W

5.17

0+2N

5.25

0+6E

5.71

0 4.71-11

0 11.84 L

0 16.64 L

0 16.68

0 27.27

0 33.40

0 31.85

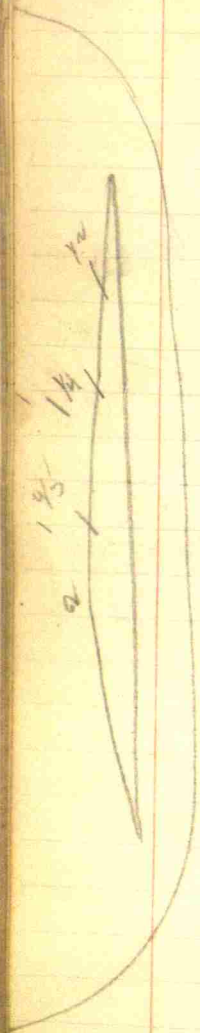
0 21.15

0 10.06

B.M. check

9.95

Alva Stanley Road - Clay Twp.
 Bg. at $\frac{1}{2}$ mi. of Sec. 22-15-2W;
 thence E one mile; thence S on
 established highway under the railroad
 to where road runs East; thence
 Easterly $\frac{1}{2}$ miles to the Twp. line.



Alva Stanley Rd.

Sta 13+0. I.P.

WIT. WILD CHERRY N 45° E - 23.8

TREE S 35° W - 68'

DEF. R. 41° 47'

Sta. 13+96.6'

I.P.

WIT. Stone E - 41.5'

DEF. L. at Sta 13+96.6

41° 39'

Center Bridge - 16+49.

Stone 26+78.7'

Stone 53+41.6

Stone 66+32.2'

I. P. Sta 75+40

WIT. - Tele. Pole N - 59.7'

MAPLE S. 41.3'

DEF. L. 20° 50'

I. P. STA 79+44.5

WIT. SE cor. of SW Wing - Ry. Br. - 84.8'

SW cor. of SE Wing of Ry. Br. - 84.7'

DEF. R. 91° 02'

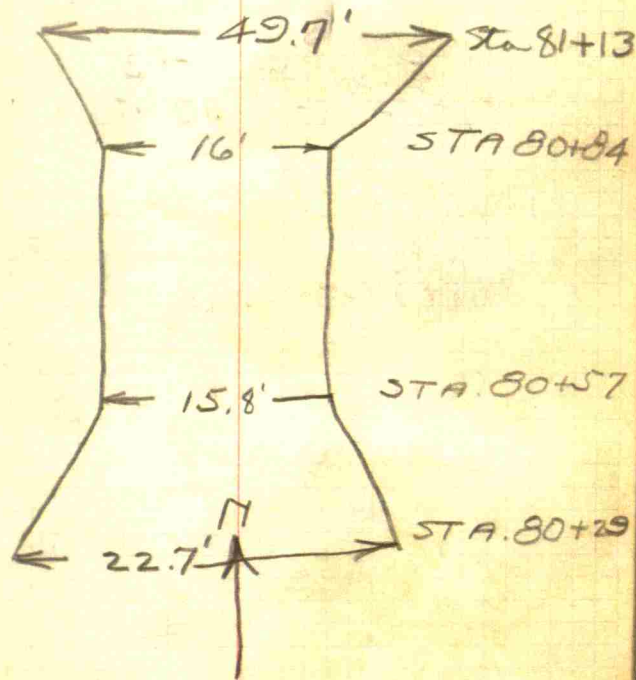
C.C.C. & S.L. R.R. BR.

15.8' Rd AT S. END

16' Rd. AT N END.

S. EDGE BR. STA. 80+57

N. EDGE BR. STA. 80



F. P. Sta 81+30

DEF. L. $34^{\circ}02'$

W. E. WING of Ry. Br. - 33.3'

N. W. WING of Ry. Br. - 28.2'

I. P. Sta 82+60

DEF. E. $13^{\circ}42'$

10' from Pin to R.R. Bank

East End of Bridge Sta 87+98

88+64 West End of Bridge.

End of Proj. / 33+32.9

Two Steaks	70	6:30
Potato chips	50	
Pickles	43	
March	25	
Bq		

94.93. Bridge S. of Road.
 98.10 Stanley Rd.
 99.80

100.77

6" = Top Footings
 5' Rise -

98.10
 97.37

.73

8

88

3

91

99.93

1.93

98.00

100.86

91

101.77

99.80

94.93

2/4.87

2.43

99.80

2.43

97.37

98.10

94.93

3.20

7.9

0

7.15

99.80

94.93

8.3

2/3.87

1.93

96.86

8.25

94.93/04.11

1.93

96.86

98.10

96.86

1.26

S ALL measurements are from the S stake to the north

	4' Dist. Line.	Ditch	Survey	to	Survey	Ditch	Line	Dist.		
-116.3	9280	9286	9123 ¹⁵	9191 ¹⁷	9239	9224 ²⁸	9136 ³⁴	9293	9316	BM on
0-1	9464	9474	9341 ¹⁶	9512 ¹⁹	9540	9535 ²⁹	9425 ³⁸	9549	9567	Concrete Cor.
0+0	9382	9380	9364 ¹²	9430 ¹⁵	9444	9461 ²⁸	9491 ³⁵	9473	9454	Post on
1+0	8991	9015	8875 ¹¹	8929 ¹⁰	8960	8948 ²⁶	8866 ³¹	9037	9036	North Side
2+0	8589	8600	8493 ¹¹	8538 ¹³	8560	8562 ²⁶	8500 ³⁰	8659	8602	Post. Sta
3+0	8229	8249	8130 ¹⁰	8240 ¹⁵	8240	8219 ²⁵	8203 ²⁷	8234	8206	0-14
4+0	7885	7933	7903 ¹¹	7952 ¹⁰	7959	7930 ²⁶	7876 ³²	7907	7905	EL. 100.00
5+0	7668	7706	7612	7673 ¹⁵	7700	7677 ²¹	7623 ²²	7678	7658	0 8964
6+0	7431	7446	7349 ¹⁰	7428 ¹⁶	7449	7430 ²⁷	7369 ³⁴	7433	7414	0 7985
7+0	7290	7303	7128 ¹²	7203 ¹⁶	7232	7217 ²⁷	7084 ³⁴	7073	7121	0 7040
7+97	7130	7084	6950 ¹⁴	7050 ¹⁵	7029	7000 ²⁷	6913 ³⁴	6903	6893	0 6323
8+0	7130	7082	7000 ¹¹	7050 ¹⁵	7029	7000 ²⁷	6937 ³¹	6903	6893	BM. on Rock
9+0	6997	6933	6695 ¹¹	6745 ¹⁴	6723	6748 ²⁷	6653 ³⁰	6728	6705	in field East
10+0	6525	6550	6454 ¹⁰	6524 ¹³	6527	6536 ²⁶	6404 ³²	6603	6621	Post. Sta
11+0	6258	6307	6263 ¹⁰	6307 ¹⁰	6305	6312 ²⁶	6231 ³¹	6460	6462	1, 3778
12+	6097	6138	6089 ⁹	6135 ¹¹	6108	6162 ²⁴	6102 ²⁹	6187	6178	EL. 6027
13+0	5910	5958	5963 ¹⁴	6060 ²¹	6064	6036 ³³	5923 ³⁷	5993	5975	
14+0	5812	5810	5865 ⁸	5841 ¹¹	5854	5845 ²⁵	5840 ³⁴	5845	5840	
15+0	5684	5693	5703 ¹⁰	5780 ¹⁵	5827	5780 ²⁷	5771 ³³	5745	5740	
16+0	5620	5621	5665 ⁸	5903 ¹⁶	5901	5893 ²⁴	5703 ³⁵	5670	5660	
16+32	E. end Bridge				60.71					
16+66	W. end Bridge				60.64					

060.69

	4' out	Line	Ditch	Berm
17+0	58.27 ^{16'}	56.68	57.29	57.25 ¹⁹
18+0	70.50 ^{10'}	70.70	70.25	66.51 ¹¹
19+0	71.98 ¹⁰	72.08	72.21	70.66 ¹²
20+0		73.00	72.93	71.84 ¹²
21+0	74.28 ¹⁰	73.99	74.08	72.71 ¹²
22+0	74.44 ¹⁰	74.22	74.34	73.65 ¹²
23+0	77.45 ¹⁰	77.60	77.90	76.52 ¹⁶
24+0	76.58 ¹⁰	76.28	76.39	75.18 ¹⁶
25+0	74.06	73.89	73.86	72.90 ¹⁴
26+0	72.79	72.60	72.56	72.05 ¹⁶
26+79	73.20 ^{50'S}	73.12	73.18	73.09 ¹²
26+94		69.40	69.55 ^{FL. 10}	72.85 ¹¹
27+0	70.95	70.60	70.35	69.98 ¹⁶
28+0	72.40	72.30	72.28	71.90 ¹⁴
29+0	74.30	74.34	75.05	74.25 ¹⁴
30+0	75.68	75.71	75.73	75.65 ¹⁵
31+0	76.70	76.52	76.50	76.41 ¹¹
32+0	77.58	77.85	77.85	77.70 ¹¹
33+0	80.12	80.00	80.25	79.79 ¹²
34+0	82.46	82.35	82.21	81.48 ¹⁴
35+0	85.50	85.30	85.20	83.73 ¹⁵
36+0	85.70	85.51	85.50	84.75 ¹⁵

BM on L. Hdwr. S. side of Rd
at corner of L.
Sta 26+94 - E.L. 73.30

4	Berm	Ditch	Line	4' out
6243	6236 ²⁸	59.85	59.42 ³⁶	59.28 ⁵⁴
67.17	66.95 ³¹	67.18 ³⁴	68.25	68.15 ⁶
71.66	71.02 ³⁰	70.77 ³²	70.88	70.54 ⁵⁹
72.57	72.00 ²⁹	71.76 ³⁴	71.15	71.03
73.15	72.92 ²⁹	72.29 ³¹	72.03	72.04
74.30	74.05 ²⁸	73.17 ³¹	72.62	72.53 ⁵⁴
76.85	76.45 ²⁶	76.00 ³³	76.10	75.40 ⁵⁴
75.51	75.21 ²⁸	74.36 ³¹	74.07	74.03
73.74	73.40 ²⁸	72.54 ³⁴	72.15	72.05
72.91	72.53 ²⁹	71.80 ³¹	71.50	71.70
72.35	72.25 ²⁶	69.15 ³⁴	70.40	70.30
72.58	72.60 ²⁶	72.10 ³³	69.22 ^{34 FL.}	68.00 ³⁷
72.28	72.32 ²⁶	70.60 ³⁵	69.75	69.65
73.75	72.49 ²⁷	71.63 ³²	71.55	71.70
75.02	74.89 ²⁸	73.85 ³²	74.87	75.08
76.44	76.00 ²⁸	75.28 ³²	74.29	74.10
77.27	76.70 ²⁹	75.80 ³¹	75.25	75.10
78.32	78.12 ²⁹	77.77 ³²	77.78	78.40
80.40	79.90 ³⁰	80.10 ³²	80.85	80.70
82.44	81.86 ³¹	81.70 ³⁴	82.15	81.30
84.33	83.89 ³¹	83.58 ³⁴	83.55	82.30
85.40	85.30 ³¹	84.96 ³⁵	85.85	85.31

70.63

Sta	10's	1's	Line	Ditch	Berm	E
37+0	8591	8582	8588	8528	8595	8601
38+0	8440	8462	8468	8478	8567	8595
39+0	8476	8415	8415	8441	8504	8533
40+0	8458	8472	8480	8487	8536	8565
41+0	8501	8528	8541	8557	8646	8655
41+65	8805	8810	8815	8665	8704	8745
42+0	8768	8778	8773	8580	8603	8612
43+0	8770	8694	8668	8310	8349	8350
44+0	8550	8500	8475	8325	8118	8189
45+0	8190	8133	8105	8027	7655	7721
46+0	7575	7508	7489	7410	7125	7135
47+0	7236	7180	7070	6965	6576	6045
48+0	6605	6505	6500	6290		6265
49+0	6075	6040	6022	6040	6024	6035
49+98						6179
50+14						6162
51+0	5658	5640	5680	5728	5720	5986
52+0	5565	5635	5639	5648	5737	5775
53+0	5595	5650	5575	5565	5718	5765
53+40	50's on rd	5675	5700	5700	5725	5745
53+60	FL. S.	55.08	-Top.	57.31		

Sta 50+0 Hub. Guard - 61.85

Rock ~~Styl.~~ 36+50
 EL. 74.39

Sta	10's	1's	Line	Ditch	Berm	E
54+0	8599	8563	8555			
55+0	8572	8528	8595			
56+0	8507	8401	8369			
57+0	8539	8493	8548			
58+0	8655	8612	8669			
59+0	8736	8721	8805			
60+0	8677	8596	8574			
61+0	8335	8290	8231			
62+0	8133	8110	8082			
63+0	7712	7707	7775			
64+0	7124	7115	7115			
65+0	6615	Some?	6578			
66+0	6265		6150			
67+0	6035		5940			
68+0						
69+0						
70+0						
71+0						
72+0						
73+0						
74+0						
75+0						
76+0						
77+0						
78+0						
79+0						
80+0						
81+0						
82+0						
83+0						
84+0						
85+0						
86+0						
87+0						
88+0						
89+0						
90+0						
91+0						
92+0						
93+0						
94+0						
95+0						
96+0						
97+0						
98+0						
99+0						
100+0						

Top - 57.37

FL. 55.15

B. M. on W end of N Rail
 of Bridge - Sta. 50+00
 EL. 64.37

54.98 S

47.24

50.41

56.68

29

Sta	4' out	Line	Ditch	Berm	4' out	Line	Ditch	Berm	4' out		
54+0	54.55	56.70	56.60	56.84 ¹⁰	56.85	57.10	56.98 ²⁵	56.28 ³¹	56.10	56.10	66.20
55+0	54.60	55.33	55.48	56.05 ¹³	56.78	57.08	56.91 ²⁸	55.91 ³³	56.65	56.91	66.95
56+0	55.65	55.55	55.49	56.03 ¹¹	56.75	57.08	56.11 ²⁷	56.11 ³¹	56.48	56.72	66.85
57+0	55.81	55.95	55.92	56.43 ¹²	57.00	57.32	57.32 ²⁴	56.50 ³¹	56.90	56.65	66.90
58+0	57.21	57.45	57.60	58.06 ¹⁴	58.75	59.11	58.90 ²⁴	58.09 ³³	58.41	58.30	68.45
59+0	61.40	62.06	62.28	63.18 ¹³	63.61	63.80	62.70 ²⁹	65.41 ³⁶	65.75	65.41	65.80
							63.75 ²⁹				
59+30		62.15	62.65	63.67 ¹³	64.75 ¹³	65.23	65.03 ²³	63.75 ²⁸	66.38	66.40	
60+0	62.24	62.49	63.07	64.07 ¹²	65.20 ¹²	65.47	65.47 ²⁶	65.15 ²⁹	66.02	66.07	66.70
61+0	63.47	64.18	64.80	65.07 ¹³	65.65 ¹³	66.00	65.75 ²⁵	65.23 ³²	66.53	65.94	66.45
62+0	67.15	67.11	67.20	67.05 ⁷	66.95 ⁸	67.27	67.07 ²⁶	67.25 ³¹	67.24	67.18	67.18
63+0	67.44	67.53	67.75	67.71 ⁸	67.70 ⁹	68.09	67.54 ³¹	67.28 ³⁹	67.49	66.94	66.38
64+0	65.80	66.27	66.41	66.16 ⁹	66.47 ¹²	66.82	66.33 ²⁸	66.12 ³¹	66.35	65.85	66.20
65+0	66.00	66.04	20.00 → 66.00	66.00 ⁸	66.05 ⁸	66.60	66.32 ²⁶	65.00 ³¹	65.40	65.85	65.65
66+0	66.03	65.91	66.07	66.01 ⁹	66.28 ¹²	66.49	66.16 ²⁶	65.65 ³²	65.85	65.87	65.87
67+0	65.40	65.38	65.20	65.00 ⁹	66.31 ¹²	66.38	66.26 ²⁶	65.30 ³¹	65.68	65.64	65.87 ⁶
68+0	65.35	65.48	65.42	65.12 ⁹	66.14 ¹³	66.10	66.02 ²⁵	65.90 ³³	66.03	66.04	66.17
69+0	65.75	65.70	65.61	65.30 ¹⁰	65.45 ¹³	65.80	65.75 ²⁷	65.17 ³²	65.07	65.08	65.30
70+0	64.02	64.61	64.58	64.30 ¹³	65.01 ¹⁵	65.38	64.98 ²⁹	64.40 ³³	63.98	63.90	63.80
71+0	55.74	65.74 ²⁰	65.64	65.31 ¹²	65.57 ¹⁵	65.95	65.79 ²⁸	64.80 ³⁴	64.94	64.81	64.74
72+0	65.51	65.52	65.51	65.61 ¹⁶	65.72 ¹⁶	66.10		65.85 ²⁹	65.85 ³⁴	65.90 ³⁶	

B.M. on Top of Rock in
yard on South side of Rd.
Sta 61+33 EL. 66.91

B.M. on W. end of Bottom
Lane, Sta 71+02
EL. 66.30

Sta	10 out	DR	Line	Ditch	Berm	C	Berm	Ditch	Line	Alt	10 in	10 out
89+0	2898	2932	2936	2945	3446	3410	3525	3525	3147	3047	3055	2195
90+0	3358	3250	3261	3373	3502	3551	3531	3213	2721	2367	2339	2630
90+0 continued 2817												
91+0	4465	4465	4350	3991		4091		4022	4581	4681	4690	
92+0	4491	4558	4598	4705	4550	4586	4502	4933	3025	3056	5757	
93+0	4722	4973	4901	4943	5023	5051	4860		5042	5099	5230	
94+0	5122	5137	5746	5138	5212	5219	5234	5174	5476	5479	5494	
95+0	5267	5267	5280		5446	5752	5448	5335	5627	5600	5684	
96+0	5704	5675	5640	5631	668	5680	5673	6693	5771	5822	5830	
97+0	6143	6164	6148	6056	6052	6090	6064	5994	6078	6032	6042	
98+0	6386	6397	6390	6280	6361	6386	6358	6290	6434	6401	6371	
99+0	6598	6622	6621	6553	6665	6683	6657	6550	6615	6621	6610	
100+0	6663	6670	6678	6623	6743	6770	6741	6670	6748	6720	6704	
101+0	6728	6530	6610	6741	6784	6842	6855	6738	6837	6845	6847	
101+41				6572	6445	6864	6876	6715	6568			
102+0	6668	6766	6755	6792	6935	6937	6927	6833	6965	6997	7014	
103+0	7242	7263	7277	7011	7123	7140	7127	7019	7115	7108	7112	
104+0	7522	7530	7528	7267	7404	7443	7417	7376	7306	7330	7366	
105+0	7772	7783	7822	7553	7695	7731	7707	7600	7610	7680	7765	
106+0	8029	8027	8000	7872	7979	8007	7978	7869	8075	8081	8110	
107+0	8393	8392	8388	8211	8310	8320	8309	8205	8520	8490	8501	
108+0	8791	8831	8952	8837	8742	8749	8758	8642	8744	8673	8676	
109+0	9370	9375	9427	9180	9235	9255	9233	9139	9370	9310	9280	
110+0	9788	9786	9819	9650	9698	9741	9726	9627	9752	9706	9687	
111+0	10056	10089	10082	9950	10020	10051	10035	9967	10153	10119	10100	

(5819)
J.P.

(6221)
J.P.

(6752)
J.P.

Summing Sta 107+0 to 111+0
5819

B.W.

El.

10' out	Dist	Line	Ditch	Bury	Q	Bury	Ditch	Line	Dist	10' out	
112+0	102.00	10217	10253	10223	10303	10317	10315	10254	10371	10350	10357
113+0	103.67	10334	10397	10407	10458	10495	10489	10438	10552	10557	10566
114+0		10401	10389	10439	10518	10532	10520	10576	10544	10562	10632
115+0	101.45	10141	10154	10150	10231	10279	10252	10182	10295	10304	
116+0	99.58	9951	9945	9750	9846	9889	9933	9691	10004	10010	10015
117+0	95.87	9581	9580	9364	9416	9436	9420	9348	9276	9243	9172
117+55		9077 ¹⁰ Cap 6.6			9280	9360	9360		9187 ¹²	9070 ¹³	
118+0	91.63	9218	9253	9283	9357	9375	9359	9336	9482	9480	9486
119+0	91.88	9225	9240	9208	9220	9285	9271	9201	9347	9353	9390
120+0	86.00 ¹⁵	8583	8589	8700	8833	8871	8867	8807	8861	8851	8888
120+17		8662 ¹²	8761 ¹¹		8822	8940		8714 ⁷	8607 ⁷		
121+0	92.26	9258 ¹⁰	9197 ¹¹	8938 ¹⁰	8941	8947	8936	9035	9131	9300	9344
121+35	92.43	9318	9352	9164	9221	9255	9225	9295	9447		
122+0	84.38	8448	8445	8522	8830	8830	8850	8810	8843	8906	9164
123+0	85.21	8535	8541	8330	8754	8758	8748	8558	8564	8547	8559
123+10			76-	8368	8674	8756	8751	8410 ¹⁵	-FL.		
124+0	94.31	9415	9312	8795	8866	8870	8875	8745	8850	8824	8840
125+0	97.80	9710	9680	9155	9336	9336	9305	9195	9178	9390	9400
126+0	100.18	9965	9950	9607	9745	9738	9747	9678	9806	9815	9830
127+0	104.00	10363	10371	10142	10259	10250	10248	10158	10442	10460	10410
128+0	107.50	10750	10780	10637	10750	10726	10716	10557	10800	10775	10770
129+0	111.14	111.03	111.13	110.00	11140	11131	11135	11026	111.95	111.61	111.85
130+0	112.70	112.55	112.75	111.90	11336	11345	11330	11155	111.60	112.24	112.31
131+0	110.92	110.95	111.00	109.55	110.50	110.55	11048	10925	111.65	111.35	111.18
132+0	106.57	106.50	107.00	105.85	106.45	106.60	10628	10575	10710	10710	10690

88.24

87.85

98.59

109.58

89.48

89.48

Just at the corner

110.75

104.33

BM on W E cor of walk

at point of house

Sta 121+35 @ 95.74

Sta	10' out	Stk	Line	Ditch	Berry	R	Born	Ditch	Line	Stk	10' out
133+0	10300	10335	10338	10258 ³	10321	10361	10360 ³¹	10220 ³⁴	10417	10445	10432
133+83	10255	10265	10250	10250 ¹⁴		10244	10212 ³¹	10081 ³⁷	10315	10335	10374

100' down Vanice Rd 1021 50' up Vanice Rd.

① 103.86

B.M. on S End West
 Header 100' South on Vanice
 Rd. El. 101.3-7
 101.51 check.

Sta	38 tile Grade	Trade Stk	Cut
44+0	7295		
44+50	7158		
45+0	7021		
45+50	6884		
46+0	6747		
46+50	6610		
47+0	6473	6668	1.95
47+50	6336	6520	1.84
48+0	6199	6359	1.60
48+50	6062	6180	1.23
49+0	5925	6062	1.37
49+50	5788	6031	2.43
50+0	5651		

N
Stk

Cut

6628	1.45
6398	.32
6207	1.08
6080	.88
5973	.48
5959	1.70

39

5661

Sta 46 Road 2th Line Ditch Ben R Bern Ditch Line 20' out

0-50												
0+0	9991	9975	10050	9893"	9997	9934	9937 ³⁰	10049 ²⁵	10124	10035	1010738	
1+0	9571	9601	9604	9443 ¹⁴	9564	9574	9546 ³⁰	9473 ³⁵	9636	9552	9660	
2+0	9265	9247	9279	9097 ¹⁵	9166	9170	9172 ³⁰	9094 ³⁴	9294	9203	9209	
3+0	8948	8970	8992	8766 ¹⁵	8818	8839	8834 ²⁹	8752 ²⁴	8957	8812	8811	
4+0	8472	8485	8477	8491 ¹⁴	8573	8583	8666 ²⁹	8609 ³⁰	8583	8594	8586	
4+66		8294 ¹⁶	8181 ²⁰	8439 ^{9 1/2}	8632	8640	8635 ⁶	8476 ¹⁰	8226 ^{7 1/2}	8263		
5+0	8752	8774	8804	8577 ¹¹	8681	8690	8684 ²⁷	8562 ²²	8855	8697	8727	
6+0	8805	8825	8797	8723 ¹¹	8839	8834	8810 ²⁶	8742 ³⁴	8882	8859	8910	
7+0	8537	8583	8639	8572 ¹³	8677	8678	8702 ²²	8542 ³³	8661 ^{7 1/2}	8663	8684	
7+29	8727	8330 ¹³	8352 ¹²	8656 ¹⁴	8796	8777	8703 ⁵	8672 ⁹	8300 ^{7 1/2}	8426 ¹⁷		
8+0	8463	8503	8572	8567 ¹¹	8665 ¹¹	8730	8692 ²⁷	8503 ⁵³	8755	8759	8775	
9+0	8855	8872	8865	8709 ¹²	8915	8949	893 ²⁶	8734 ³¹	8939	8837	8898	
10+0	9122	9134	9131	9030 ¹³	9117	9154	9117 ²⁷	9020 ³²	9188	9175	9174	
11+0	9457	9435	9433	9307 ¹⁴	9434	9455	9429 ²⁷	9305 ³³	9437	9409	9431	
12+0	9565	9551	9544	9410 ¹²	9499 ¹⁷	9523	9503 ²⁷	9350 ³²	9435	9396	9387	
13+0	9336	9335	9329	9190 ¹³	9279 ¹⁶	9290	9274 ²⁶	9227 ³⁴	9266	9255	9234	
14+0	9161	9142	9143	8937 ¹¹	9044	9085	9055 ²⁷	8947 ³²	9056	9045	9032	
15+0	8905	8872	8902	8662 ¹²	8777 ¹⁷	8729	8761 ²⁷	8697 ³²	8788	8767	8761	
16+0	8468	8480	8499	8461 ¹¹	8579 ¹¹	8565	8543 ²⁷	8442 ³²	8520	8507	8497	
17+0	8330	8360	8376	8130 ¹¹	8277 ¹¹	8262	8271 ²⁹	8153 ³³	8251	8230	8185	
18+0	7953	7915	7923	7405 ¹¹	7514 ¹⁷	7508	7437 ²⁰	7898 ²⁸	8050	8034	8000	
18+27	7650	7530	7638	7308 ¹¹	7372 ¹⁵	7344	7343 ²⁷	7321 ²⁸	7705	7670	7820 7860	
18+45	7280	7208	7194	7205 ⁹	7223 ¹⁵	7215	7222 ²²	7193 ²⁰	7045	6990	6914	
19+0	6923	6943	6934	6982 ¹⁰	7042	7043	7053 ²⁵	6970 ²²	6896	6878	6862	

48

Sta	10' Int	Stk	Line	Ditch	Berm	Q	Berm	Ditch	Line	Stk	10' Int
20+0	6806	6796	6805	6845 ⁰	7080	7098	7102 ²⁶	6751 ³⁴	6745	6576	6480 ⁴⁵
20+28			7371 ⁵	7204 ⁴	7270 ⁶	7262	7267 ⁴	7216 ¹⁵	6374 ¹⁵		
20+75	6945	6970	6806	7081 ⁶	7374	7376	7376	7274 ³⁰	7145	7124	7065
21+0	7629	7570	7521	7431 ¹⁰	7483	7280	7355 ²²	7652 ³⁰	7739	7705	7651
21+12	7976	4810	7651	7486	7541	7535	7460 ³⁰	7975 ³⁷	7990	7956	7892
22+0	8400	8414	8397	8032 ¹¹	8133 ¹⁷	8136	8018 ⁶	8420 ³³	8425	8443	8447
23+0	8668	8675	8645	8460 ⁹	8540	8540		8438 ⁵	8657	8664	8659
24+0	8743	8769	8740	8679 ⁸	8992	8778		8673 ²⁷	8844	8847	8860
25+0	8891	8918	8921	8821 ⁹	8943	8960		8868 ²⁸	8956	8965	8968
26+0	9110		9118			9111			9146		9191
26+07	9135		9181			9177			9181		9203
		50' up rd	9261				50' up rd	9351			

49

Both steep
 32' cor. of top at south end
 of Ranch of House at end of
 rd. @ 9526

~~87105~~ 9471 0 9023
~~89159~~ 8965
~~88871~~ 88123
~~89653~~ 87407
 88188

Substr. size cuts (7/11)

0-50	10347	10188	1'-7"	102.31
0+0	10060	9983	9' ¹ / ₂	100.33
1+0	9570	9573	0'- ¹ / ₂ "	96.2
2+0	9217	9163	0'-6' ¹ / ₂ "	92.13
3+0	8833	8850	0'-2"	89.00
4+0	8594	8731	1'-4' ¹ / ₂ "	87.81
5+0	8722	8709	0'-1' ¹ / ₂ "	87.59
6+0	8883	8687	1'-11' ¹ / ₂ "	87.37
7+0	8678	8665	0'-1' ¹ / ₂ "	87.15
8+0	8757	8711	0'-5' ¹ / ₂ "	87.61
9+0	8875	8893	0'-2' ¹ / ₄ "	89.43
10+0	9169	9145	0'-3"	91.95
11+0	9416	9376	0'-5"	94.26
12+0	9397	9402	0'- ¹ / ₂ "	94.52
13+0	9273	9207	0'-8' ¹ / ₄ "	92.57
14+0	9080	8995	0'-10' ¹ / ₄ "	90.45
15+0	8787	8738	0'-6"	87.88
16+0	8525	8419	1'-9"	84.69
17+0	8236	8055	1'-10"	81.05
18+0	8042	7743	3'-0"	77.93
19+0	6901	7536	6'-4' ¹ / ₄ "	74.86
20+0	6938	7419	5'-10"	73.69
21+0	77.15	7574	1'-5"	76.24
22+0	8486	8002	4'-10"	80.52
23+0	8682	8450	2'-4"	85.00

1	1.7
2	1.6
8	
<hr/>	
	3.1

0-5

8789

6' low

6' low

8498

L 52

	Id	the	max	grade,	cut	fill	
24	+	08887	8763	1'-3"			x 88.13
25	+	8978	8940	0'-4 $\frac{3}{4}$ "			x 89.90
26	+	9185	9098	0'-10 $\frac{1}{2}$ "			91.48

L 53

0-1	9302	9082	9132
0-1	95.12	9258	2'-6 1/2"
0+0	94.00	9202	1'-11 1/2"
1	90.23	8964	0'-7"
2	86.74	8600	0'-5 1/2"
3	82.70	8240	0'-4"
4	79.45	7980	0'-5 1/2"
5	77.15	7740	0'-3"
6	74.76	7490	0'-1 3/4"
7	73.18	7267	0'-6" 0'-6"
8	71.00	7044	0'-10 1/2" 0'-10 1/2"
9	69.11	6821	0'-11 1/2" 0'-11 1/2"
10	65.79	6598	0'-2 1/4" 0'-2 1/4"
11	62.87	6375	0'-11"
12	61.26	61.74	X 0'-6" 0'-6"
13			
14	58.17	59.36	1'-2"
15	56.96	59.38	2'-5"
16	56.56	59.96	3'-4 3/4"
17	58.76	62.25	3'-6"
18	70.00	66.25	3'-9"
19	72.06	69.60	2'-5 1/2"
20	79.09	71.65	1'-5 1/2"
21	74.39	73.05	1'-4"
22	77.62	74.45	0'-2"
23	77.73	76.32	2'-5"

9202	1157
BM. Check 6027.5	088.97
8964	077.94
<u>8600</u>	067.98
69.11	061.20
68.21	
3.64 91	
79.90	
77.40	
<u>2.50</u>	
72.67	
70.44	
<u>2.23</u>	
62.42	
61.26	
<u>1.16</u>	
61.28	
63.42	
61.26	
<u>2.16</u>	

BM. on
 West End
 of North
 Railroad Bridge
 Sta 16+49
 El. 64.26

58

Sta	Old	New	Cut	Fill
24	7650	7515	1'-5 1/2"	7565
25	7418	7445		0'-3 1/2" 7495
26	7280	7375	Bal	0'-11 1/2" 7425
27	7057	7348		2'-11" 7398
28	7247	7410		1'-8" 7460
29	7517	7515	0'-0 1/4"	7562
30	7598	7620		0'-2 3/4" 7670
31	7668	7725		0'-6 3/4" 7720
32	7787	7830		0'-5" 7980
33	out			
34	8236	8166	0'-8 3/4"	8216
35	8555	8334	2'-2 1/2"	8384
36	out			
37	8627	8508	1'-2 1/4"	8559
38	8501	8514		0'-1 3/4"
39	8448	8520		0'-9"
40	8513	8526		0'-1 1/2"
41	8667	8532	0'-4 1/4"	Bal
42	8801	8444	3'-7"	
43	8787	8168	6'-2"	
44	8634	7798	8'-4 1/4"	
45	8221	7428	7'-11"	
46	7607	7058	5'-6"	
47	7218	6688	5'-3 3/4"	
48	6597	6387	2'-1 1/4"	

B.M. Check 73.40
 B.M. Check 73.35
 Bal

07726
 086.30
 082.61
 096.06

Sta	Ill. ltk	Cut	Fill
49	60.55	6226	1'-8½"
50	Bridge		
51	5741	6076	6126
52	5650	6018	6068
53	5617	5960	6010
54	5684	5912	5962
55	5578	5927	2'-3½"
56	5576	5952	3'-6"
57	5608	5977	3'-9"
58	5781	6037	3'-8½"
59	6237	6188	0'-6"
60	6316	6374	0'-7"
61	6497	6560	0'-8"
62	6732	6693	0'-4½"
63	6787	6722	0'-8"
64	6669	6698	0'-3½"
65	6620	6674	0'-6½"
66	6627	6650	0'-3"
67	6547	6626	0'-9½"
68	6566	6602	0'-4½"
69	6578	6578	Grade
70	6473	6559	0'-10"
71	6593	6530	0'-8"
72			
73			

(check) B.M. West End N.
 Rail B.B. Sta. 51400
 → EL. 6451
 Orig. B.M. 6437
 14

6226
 6055
 1.71

05684
 06308
 06620

6691
 6640
 6628
 12

Sta	Subd.	Subd. 2nd	Sta	Subd.
1-63	9082	91.32	4+50	7865 7915
1-50	9118	91.68	4+75	7803 78.53
1-25	9188	92.38	5+0	7740 77.90
1-0	9258	93.08	5+25	7678 77.28
0-75	9309	93.59	5+50	7615 76.65
0-50	9321	93.71	5+75	7553 76.03
0-25	9306	93.56	6+0	7490 75.40
0+0	9252	93.02	6+25	7435 74.85
0+25	9179	92.29	6+50	7379 74.29
0+50	9106	91.56	6+75	7324 73.74
0+75	9031	90.81	7+0	7268 73.17
1+0	8951	90.01	7+25	7212 72.62
1+25	8868	89.18	7+50	7156 72.06
1+50	8780	88.30	7+75	7100 71.50
1+75	8690	87.40	8+0	7044 70.94
2+0	8600	86.50	8+25	6989 70.39
2+25	8510	85.60	8+50	6933 69.83
2+50	8420	84.70	8+75	6877 69.27
2+75	8330	83.80	9+0	6821 68.71
3+0	8240	82.90	9+25	6766 68.16
3+25	8178	82.28	9+50	6710 67.60
3+50	8115	81.65	9+75	6654 67.04
3+75	8053	81.03	10+0	6598 66.48
4+0	7990	80.40	10+25	6543 65.93
4+25	7928	79.78	10+50	6487 65.37

~~08560~~
075.40

P.C.
10+72

Break at
87 instead of
86 as in
Plans.

Sta	S. Grade	EL Stk.	Sta.	S. Bd.	EL Stk.
10+72.6	6436	6426	17+0	6225	62.75
10+79.6	6438	6430	17+25	6325	63.75
11+22.6	6336	6386	17+50	6425	64.75
11+47.6	6293	6343	17+75	6525	65.75
11+72.6	6250	6300	18+0	6625	66.75
12+97.6	6207	6257	18+25	6721	67.71
12+22.6	6164	6214	18+50	6809	68.59
12+47.6	6121	6171	19+75	6889	69.39
12+72.6	6078	6128	19+0	6960	70.10
12+97.6	6035	6085	19+25	7024	70.74
13+25.9	6013	6063	19+50	7079	71.29
13+50	5980	6030	19+75	7126	71.76
13+75			20+0	7165	72.15
14+03.6	5924	5974	20+25	7200	72.50
14+28.6	5927	5977	20+50	7235	72.85
14+53.6	5928	5978	20+75	7270	73.20
14+78.6	5930	5980	21+0	7305	73.55
15+03.6	5942	5992	21+25	7340	73.90
15+28.6	5957	6007	21+50	7375	74.25
15+53.6	5972	6022	21+75	7410	74.60
15+78.6	5987	6037	22+0	7445	74.95
15+94.1	59.97	6047	22+25	7477	75.27
16+25	60.40	60.90	22+50	75.02	75.52
16+50	6067	61.17	22+75	75.21	75.71
16+75	6135	61.85	23+0	75.32	75.82

70.10.0

70.10.0

Sta	66	70	Sta	70	70
23+25	75.39	75.89	29+50	7567	76.17
23+50	75.37	75.87	29+75	7593	76.43
23+75	75.30	75.80	30+0	7620	76.70
24+0	75.15	75.65	30+25	7646	76.96
24+25	74.98	75.48	30+50	7672	77.12
24+50	74.80	75.30	30+75	7698	77.48
24+75	74.63	75.13	31+0	7725	77.75
25+0	74.45	74.95	31+25	7751	78.01
25+25	74.28	74.78	31+50	7777	78.27
25+50	74.10	74.60	31+75	7803	78.53
25+75	73.93	74.43	32+0	7830	78.80
26+0	73.75	74.25	32+25	7872	79.22
26+25	73.61	74.11	32+50	7914	79.64
26+50	73.51	74.01	32+75	7956	80.06
26+75	73.47	73.97	33+0	7998	80.48
27+0	73.48	73.98	33+25	8040	80.90
27+25	73.55	74.05	33+50	8082	81.32
27+50	73.69	74.19	33+75	8124	81.74
27+75	73.87	74.37	34+0	8166	82.16
28+0	74.10	74.60	34+25	8208	82.58
28+25	74.36	74.86	34+50	8250	83.00
28+50	74.62	75.12	34+75	8292	83.42
28+75	74.88	75.38	35+0	8334	83.84
29+0	75.15	75.65	35+25	8374	84.24
29+25	75.41	75.91	35+50	8408	84.58

75.82

L 287

B. M. check 73.30x
Sta 76+94

73.87

70.53

3.34

73.48

70.53

2.95

49

076.23

083.96

37+0 85.56

38+0 85.56

27+0 - 73.44

26+75 - 72.96

24+50 - 73.21

75.15

74.87

39+0 - 85.60

40+0 - 85.59

41+0 85.43

75.80 - 29+50

76.20 30+00

42+0 - 84.27

83.38

Sta. 100		Sta. 100	
35 + 75	8438	84.88	42+0 8444 8494
36 + 0	8461	85.11	42+25 8393 8443
36 + 25	8481	85.31	42+50 8330 8380
36 + 50	8495	85.45	42+75 8225 8275
36 + 75	8506	85.56	43+0 8168 8218
37 + 0	8508	85.58	43+25 8076 8126
37 + 25	8509	85.59	43+50 7983 8033
37 + 50	8511	85.61	43+75 7891 7941
37 + 75	8512	85.62	44+0 7798 7848
38 + 0	8514	85.64	44+25 7706 7756
38 + 25	8515	85.65	44+50 7613 7663
38 + 50	8517	85.67	44+75 7521 7571
38 + 75	8518	85.68	45+0 7428 7478
39 + 0	8520	85.70	45+25 7336 7386
39 + 25	8521	85.71	45+50 7243 7293
39 + 50	8523	85.73	45+75 7151 7201
39 + 75	8524	85.74	46+0 7058 7108
40 + 0	8526	85.76	46+25 6966 7016
40 + 25	8527	85.77	46+50 6873 6923
40 + 50	8529	85.79	46+75 6781 6831
40 + 75	8530	85.80	47+0 6688 6738
41 + 0	8532	85.82	47+25 6600 6650
41 + 25	8527	85.77	47+50 6520 6570
41 + 50	8512	85.62	47+75 6450
41 + 75	8483	85.33	48+0 6387 6437

63	85.56	85.56	69
	85.08	86.14	
	48	.42	
	85.20		81.97
36 + 0	-84.67	85.59	81.66
35 + 0	-83.36	85.26	.31
34 + 0	-81.97	33	
33 + 0	-80.15		80.15
32 + 0	-78.36	85.43	79.98
31 + 0	-77.10	85.32	
3		11	105
82			
		83.83	
		8380	
71.08	✓ 09	8275	
70.08	✓ 63	8218	
		57	
		8380	
		8275	
		105	
		8275	
		8218	
		57	
		8218	
		8126	
		8033	
		92	
		93	

Sta 70
Sta. 70

Sta. 71
Sta. 71

48+25	6339	6384	54+50	5915	5960
48+50	6289	6337	54+75	5921	5971
48+75	6253	6313	55+0	5927	5977
49+0	6226	6276	55+25	5933	5983
49+25	6203	6253	55+50	5939	5989
49+50	6180	6230	55+75	5945	5995
49+75	6157	6207	56+0	5952	6002
50+0	6134	6184	56+25	5958	6008
50+25	6120	6170	56+50	5964	6014
50+50	6105	6155	56+75	5970	6020
50+75	6091	6141	57+0	5977	6027
51+0	6076	6126		5984	6037
51+25	6062	6112	57+50	5999	6044
51+50	6047	6097		6017	6067
51+75	6033	6083	58+0	6037	6087
52+0	6018	6068		6071	6121
52+25	6004	6054	58+50	6105	6155
52+50	5989	6039		6146	6196
52+75	5975	6025	59+0	6188	6238
53+0	5960	6010	59+25	6234	6284
53+25	5946	5996	59+50	6281	6331
53+50	5931	5981	59+75	6327	6377
53+75	5919	5969	60+0	6374	6424
54+0	5912	5962	60+25	6420	6470
54+25	5910	5960	60+50	6467	6517

07 71

6446

check

6437
6634
 303

9
 5
 77
 63
 6/34

105
 7270
5218

2168
 2283
 351
 46
193

396305
6238

647

7

60+75	6513	6563	67+0	6626	6696
61+0	6560	6610		6620	6670
61+25	6600	6650	+50	6614	6664
61+50	6640	6690		6608	6658
61+75	6666	6716	68+0	6602	6652
62+0	6693	6743		6596	6646
62+25	6707	6757	+50	6590	6640
62+50	6724	6774		6584	6634
62+75	6721	6771	69+0	6578	6628
63+0	6722	6772		6572	6622
63+25	6716	6766	+0	6566	6616
+50	6710	6760		6560	6610
+75	6704	6754	70+0	6554	6604
64+0	6698	6748		6548	6598
+25	6692	6742	+50	6542	6592
+50	6686	6736		6536	6586
+75	6680	6730	71+0	6530	6580
65+0	6674	6724		6524	6574
+25	6668	6718	+50	6518	6568
+50	6662	6712		6512	6562
+75	6656	6706	72+0	6506	6556
66+0	6650	6700	+25	6499	6549
		6694	+50	6499	6549
+50	6638	6688	+75	6477	6527
	6632	6682	0	6461	6511

6798
673266
61

28

6722
6660
6612

6746
6690
6640

6734
6684
6634

6721
6664
6614

6646
6630
6614

6646
6630
6614

2105
52
260
104
1300

6646
6630
6614

6646
6630
6614

6646
6630
6614

74 Sub grade 5055
at Sta 80

725	6440	6495	+50	5339	5388
730	6425	-		5264	5314
+75	5903	6453	80+0	5192	5240
74+0	6377	6427		145	
	6351	6401	+50		
750	6325	6375			
	6298	6348	81+0		
75+0	6272	7322			
	6246	6296	+50		
+60	6220	6270	41		
	6194	6244	82+0		
76+0	6167	6217	62+0		
	6135	6185			
750	6107	6157			
	6059	6109			
77+0	6013	6053			
	5960	6010			
+50	5906	5956			
	5839	5889			
78+0	5772	5822			
	5699	5749			
+50	5627	5677			
	5559	5609			
79+0	5482	5532			
	5410	5460			
	92				
	5338				

150

cut sheet		75
Stn	cut	fill
75+0	62.63	0'-1 1/2"
76+0	61.44	0'-3"
77+0	60.25	0'-1 3/4"
78+0	58.11	0'-4 3/4"
79+0	55.87	1'-0 1/2"

5482
5192
2190
145

5482
145
5627 5482

5274
52.63

53 11
5-35622

6167
6144
2145

23 58.11
6 5772

6028
6015
13

5772
5482
2290

145 234
117

140

5482
145
5627

3/2 3/2
630 5772
44 54

6015
5906
2109
54

5587
5482
55

1.05

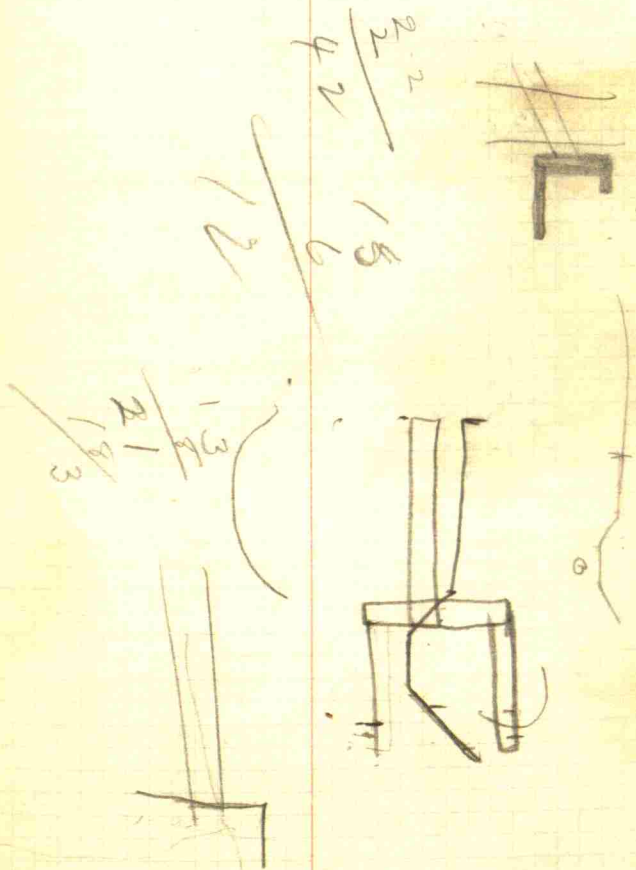
5889
117
6006

5906
5772
2134
107

(5808)

	+25	6108	
	+50	76100	
	+75	6051	
77+0		6003	6053
	+25	5740	5990
	+50	5877	5927 ✓
	+75	5774	5824
78+0		5722	5772 ✓
		5637	5687
	+50	5552	5602 ✓
		5467	5517
79+0		5382	5432
		5297	5397
	+50	5212	5262
		5133	5188
80+0		5068	5118
		5016	
	+50	4979	

056.96 77



86+50 3310 3360

86+50 3250 3300

85+50 3295 3345

85+50 3360 3410

84+50 3455 3505

84+50 3600 3650 (sub)

83+50 3795 3845

83+50 4040 4090

82+50 4310

82+50 4580

81+50

81+50

79

78+0 R 5722
 78+50 5552
 79+0 5382
 79+50 5212
 80+0 5068
 80+50 4978
 81+0 4949
 81+50 4807
 82+0 4580
 82+50 4310
 83+0 4940
 83+50 3795
 84+0 3600
 84+50 3455 3505

85+0 3960 3410
 85+50 3295 3345 ✓
 86+0 3250 3300 ✓
 86+50 3310 3360 ✓
 87+0 3380 3430 ✓
 87+50 3455 3505 ✓
 88+0 3530 ~~3570~~
 +50 —
 89+0 3520 3570 ✓
 +50 3538 3588 ✓
 90+0 3622 3672 ✓
 +50 3773 3823 ✓
 91+0 3990 4040 ✓
 +50 4040 4290 ✓
 92+0 4490 4540 ✓
 92+50 4722 4772 ✓
 93+0 4917 4967 ✓
 93+50 4977 5027 ✓
 94+0 5201 5251 ✓
 94+50 5306 5356 ✓

0.29
 2.91
 5.03

check July 23-1929
 3595

81
 811. 3594

check 3595

Sub Ad.

⊖

84+16 - 34.80 85.30 ✓
 83+66 - 36.95 87.45 ✓
 83+16 - 40.24 10.74 ✓
 82+66 - 42.24 12.74 ✓
 82+20 - 44.72 46.22 ✓
 82+0 - 45.80 46.30 ✓ 6.29
 81+50 - 48.07 48.57 ✓

85+0	835412	5460 ✓			
+50	5524	5574 ✓	+75		
			102+0	6944	6994 ✓
96+0	5653	5703 ✓	+25		
+25			+50	7012	7062 ✓
+50	5795	5845 ✓	+75		
+75			103+0	7108	7158 ✓
97+0	5954	6004 ✓	+25		
+25			+50	7233	7283 ✓
+50	6119	6169 ✓	+75		
+75			104+0	7386	7436 ✓
98+0	6286	6336 ⁰⁵ ✓	+25	7470	
+25			+50	7553	7603 ✓
+50	6451	6501 ✓	+75	7637	
+75			105+0	7720	7770 ✓ 7.68
099+0	6561	6611 ✓	+25	7804	7854
+25			+50	7888	7938 ✓ 0.37
+50	6670	6720 ✓	+75	7971	8021 ✓
+75			106+0	8054	8104 ✓
100+0	6726	6776 ✓	+25	8138	8188 ✓
+25			+50	8221	8271 ✓
+50	6780	6830 ✓	+75	8309	8359 ✓
+75			107+0	8403	8453 ✓
101+0	6835	6885 ✓	+25	8506	8556 ✓
+25			+50	8613	8663 ✓
+50	6870	6920 ✓	107+75	8725	8775 ✓

BM July 23, 1928.
 on NW Cor of
 North Meader
 E. 70.17
 Sta. / 01 + 50

108

108	+0	8838	8888	✓	+25	10476	10526	✓
	-25	8949	8999	✓	+50	10494	10484	✓
	+50	9062	9112	✓	+25	10379	10421	✓
	+25	9175	9225	✓	-50	10311	10361	✓
109	+0	9288	9338	✓	+25	10228	10278	✓
	+25	9397	9447	✓	+50	10131	10181	✓
	-50	9501	9551	✓	+25	10027	10077	✓
	+25	9598	9648	✓	+50	9924	9974	✓
110	+0	9690	9740	✓	+25	9824	9874	✓
	+25	9775	9825	✓	+50	9729	9779	✓
	+50	9855	9905	✓	+25	9641	9691	✓
	+75	9927	9977	✓	+50	9560	9610	✓
111	+0	9993	10043	✓	+25	9485	9535	✓
	+25	10056	10106	✓	+50	9415	9465	✓
	+50	10120	10170	✓	+25	9353	9403	✓
	+75	10183	10233	✓	+50	9297	9347	✓
112	+0	10246	10296	✓	+25	9243	9293	✓
	+25	10310	10360	✓	+50	9190	9240	✓
	+50	10373	10423	✓	+75	9137	9187	✓
	+75	10429	10479	✓	+50	9084	9134	✓
113	+0	10472	10522	✓	+25	9035	9085	✓
	+25	10500	10550	✓	+50	8996	9046	✓
	+50	10515	10565	✓	+75	8968	9018	✓
	+75	10516	10566	✓	+50	8949	8999	✓
114	+0	10502	10552	✓	+25	8940	8990	✓
					+50	8940	8990	✓

85

0425 B. Moore Rock
 May 11/3 +50 W. Side
 Road El. 10761

+75 8951 9001 ✓
 121+0 8971 9021 ✓
 +25 8991 9041 ✓
 +50 9001 9051 ✓
 +75 9001 9051 ✓
 122+0 8991 9041 + ✓
 +25 8976 9026 ✓
 +50 8961 9011 + ✓
 8946 8990
 123+0 8931 8981 + ✓
 +25 8924 8974 ✓
 +50 8932 8982 + ✓
 +75 8956 9006 ✓
 124+0 8996 9046 + ○
 +25 9051 9101 ✓
 +50 9123 9173 + ✓
 +75 9210 9260 ✓
 125+0 9312 9362 + ✓
 +25 9423 9473 ✓
 +50 9533 9583 + ✓
 +75 9643 9693 ✓
 126+0 9753 9803 + ✓
 +25 9863 9913 ✓
 +50 9974 10024 + ✓
 +75 10084 10134 ✓

127+0 10194 ✓
 +25 10306 ✓
 +50 10416 ✓
 +75 10526 ✓
 128+0 10635 ✓
 +25 10745 ✓
 +50 10856 ✓
 +75 10966 ✓
 129+0 11076 ✓ ○
 +25 11173 ✓
 +50 11284 ✓
 +75 11388 ✓
 130+0 11309 ✓
 +25 11352 ✓
 +50 11462 ✓
 +75 11571 ✓
 131+0 11680 ✓
 +25 11790 ✓
 +50 11920 ✓
 +75 12020 ✓
 132+0 12120 ✓
 +25 12220 ✓
 +50 12320 ✓
 +75 12420 ✓
 133+0 12520 ✓

D 11065

B. 5.74 at
 four
 sta 121+35

95.74
 5.77
 410
 339
 67

105.74 ○

102.41

June 12 - 28

Sta	Stake	Side D		
0+00	100.33	98.15	96.00	4.32
0+50	100.00	98.13	95.83	4.17
1+00	V 100.21	98.49	95.67	4.54
1+50	V 100.55	98.42	95.50	5.05
2+00	V 100.68	98.95	95.33	5.35
2+50	V 100.70	99.07	95.17	5.53
3+00	V 101.43	99.20	95.00	6.43
3+50	V 101.27	98.93	94.75	6.52
4+00	V 101.01	98.67	94.50	6.51
4+50	V 100.87	98.90	94.25	6.62
5+00	V 101.05	99.29	94.00	7.05
5+50	V 101.51	99.75	93.75	7.76
6+00	V 102.12	100.19	93.50	8.62
6+50	V 101.56	100.77	93.25	8.31
7+00	V 101.18	100.59	93.00	8.11
7+50	V 99.30	99.21	92.75	6.55
8+00	V 98.62	97.40	92.50	6.12
8+50	V 97.22	96.01	92.25	4.97
9+00	V 95.08	94.43	92.00	3.08
9+50	V 92.49	92.00	89.00	3.49
10+00	J 89.55	88.78	86.00	3.55

Brown Tp Sch Drain ⁹¹

→ At N.E. cor Sch Gds.

E1. Gd at SE Cor Bldg
101.42

Sta	CUT		SHEET - Stanley	
	Gd.	CUT	Fill.	
89+0	29.45	3520	5'-9"	
90+0	33.09	3622	3'-1½"	
91+0	44.99	3990	5'-1"	
92+0	45.83	4490	0'-11"	
93+0	49.16	4917	GRADE	
94+0	51.63	5201	0'-4½"	
95+0	53.20	54.12	0'-11"	
96+0	56.72	56.53	0'-2¼"	
97+0	61.66	59.54	2'-1½"	
98+0	64.00	62.86	1'-2"	
99+0	66.25	65.61	0'-8"	
100+0	66.83	67.76	0'-5"	
101+0	67.44	68.35	0'-11"	
102+0	67.77	69.44	1'-8"	
103+0	72.79	71.08	1'-8½"	
104+0	75.45	73.86	1'-7"	
105+0	77.93	77.20	0'-9"	
106+0	80.07	80.54	0'-5¾"	
107+0	84.08	84.02	0'-0¾"	
108+0	88.67	88.38	0'-3½"	
109+0	93.85	92.88	0'-11¾"	
110+0	98.03	96.90	1'-1½"	
111+0	100.97	99.93	1'-0½"	
112+0	102.55	102.46	0'-1"	
113+0	104.10	104.70	0'-7½"	

~~99.03~~

91.18

~~79.65~~

~~69.90~~

~~60.50~~

~~54.17~~

~~44.06~~

36.28

1115

B.M. on SW
corner of SW
wing of Bridge
Sta. 88+95.
EL - 34.67

	115 L.Gd.	New	cut	Full
	5th	Ad.		
114+0	104.33	105.78		1'-5 $\frac{1}{2}$ "
115+0	101.76	103.38		1'-8"
116+0	99.60	99.24	0'-4 $\frac{1}{2}$ "	
117+0	95.96	95.60	0'-4 $\frac{1}{2}$ "	
118+0	92.59	92.97		0'-4 $\frac{3}{4}$ "
119+0	92.53	90.84	1'-8 $\frac{1}{2}$ "	
120+0	86.15	89.49		3'-4"
121+0	92.50	89.71	2'-9 $\frac{3}{4}$ "	
122+0	84.63	89.91		5'-3 $\frac{1}{2}$ "
123+0	85.50	89.31		3'-10"
124+0	94.38	89.96	4'-5 $\frac{1}{4}$ "	
125+0	cut	93.12		
126+0	100.04	97.53	2'-6"	
127+0	104.14	101.94	2'-2 $\frac{1}{2}$ "	
128+0	107.79	106.35	1'-5 $\frac{1}{2}$ "	
129+0	111.39	110.76	0'-7 $\frac{3}{4}$ "	
130+0	112.79	113.09		0'-3 $\frac{3}{4}$ "
131+0	111.34	111.20	0'-1 $\frac{3}{4}$ "	
132+0	106.57	107.20		0'-8"
133+0	103.43	103.20	0'-3"	

① 107.52

① 107.01

① 99.00

① ~~88.49~~

① ~~93.58~~

① 103.12

117

L 118

EL.
Stn

Stanley Rd.

New
Grade

Cut

Fill

87+0 26.60 33.80

7'-2½"

86+0 27.65 33.00

5'-4¼"

85+0 29.48 33.60

4'-1½"

84+16 31.14 35.48

4'-4¼"

82+0 47.56 45.80

1'-9"

81+0 49.02 49.49

0'-5½"

~~⊙ 42.70~~

⊙ 31.85

81119

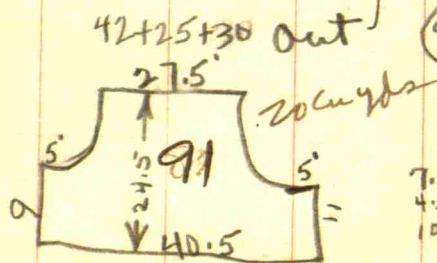
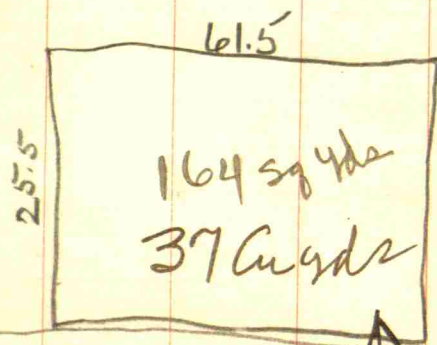
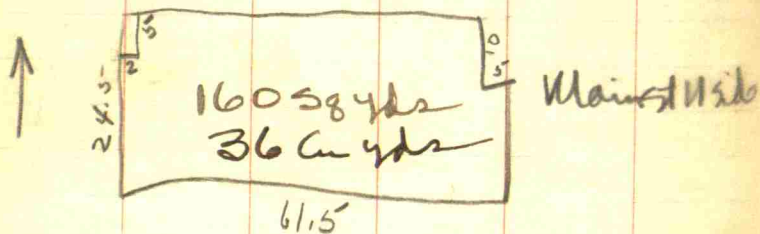
120 Pitbons

part and burb Scamohorn E
to Smith 82 Cu yds Conc

60 yds Gravel
36 yds Sand

121

60 yds Gravel Spikes
36 " Sand



Sch 91

52' Curb
7.5 x 5
4.5 x 5
10.5 x 5
12 sq yds

- 5 Cu yds.

71 Cu yds Gravel / 36 County
43 " " Sand / 23 County
County and Town

County pt 148 sq yds

Pittsboro - Alvin
west 142' to W side

Edge Part

0+00	100.00	99.87	12.5'	9'
0+20	100.21	100.03	12.5'	9'
0+40	100.36	100.00	14.9'	9'
0+60	100.60	100.19	16.5'	11'
0+80	100.81	100.41	18.0	12.5
1+00	101.00	100.60	19.5	13.7
1+20	101.21	100.89	19.9	14.5
1+42	101.56	101.44	20.5	15'

Dutty

Smith E line n.s. side
alley

E. Part

99.37	0
99.42	✓
99.57	✓ 0
99.82	✓
100.07	✓
100.32	✓
100.57	✓
100.84	✓ 0

Stone Cks for
Hadley Rd

	+50	9778	✓	9828	⊙
	+75	9675	✓		
	+10	9573	✓	9623	
	+25	8470	✓		
	+50	9368	✓	9418	
	+75	9265	✓		
	2 +0	9163	✓	9213	
	+25	9066	✓		
	+50	8985	✓	9035	← ⊙
	+75	8909	✓		
	3 +0	8850	✓	8900	
	+25	8801	✓		
	+50	8768	✓	8818	
	+75	8742	✓		
	4 +0	8721	✓	8781	
	+25	8725	✓		
	+50	8720	✓	8770	
	+75	8714	✓		
	5 +0	8709	✓	8759	
	+25	8703	✓		
	+50	8698	✓	8748	⊙
	+75	8692	✓		
	6 +0	8687	✓	8737	
	+25	8681	✓		
	+50	8676	✓	8726	
	+75	8670	✓		
-50	10188	10238	✓		
-25	10085	✓			
0 +0	9983	10033	✓		
+25	9880				

check BTT 125
101.55

B.T.T. on Vannice
Rd. 101.57

	0	+50	9101	9151				
7	+0	8665	8715x	+75	9048	9098		
		+25	8664		14	+0	8995	9045
		+25	8671	8721x		+25	8940	8990
		+75	8687			+50	8880	8930x
9	+0	8711	8761x			+75	8815	8865
		+25	8754		5	+0	8745	8795
		+50	8796	8846x		+25	8671	8721
		+75	8846			+50	8592	8642x
9	+0	8895	8945x			+75	8508	8558
		+75	8958		16	+0	8419	8469
		+50	9021	9071x		+25	8328	8378
		+75	9084			+50	8237	8287
10	+0	9144	9194x			+75	8146	8196
		+25	9205		17	+0	8055	8105x
		+50	9254	9304x		+25	7967	8017
		+75	9293			+50	7886	7936x
11	+0	9322	9372x			+75	7811	7861
		+25	9342		18	+0	7743	7793
		+50	9357	9407x		+25	7681	7731
		+75	9352	9402x		+50	7626	7676x
12	+0	9342	9392x			+75	7577	7627
		+25	9323	9373		+0	7536	7586x
		+50	9294	9344x		+25	7479	7529
		+75	9255	9305		+50	7459	7509x
13	+0	9207	9257x			+75	7420	7470
		+25	9154	9204				

90.44	82.85
	25
	25
	6.25
	25.0
	25
	56.25
	5
	6.25
	25.0
	25
	155.25

0 91.96

870
793
17

20+0	7379	74.29	X
+25	7355	74.05	
+50	7375	74.25	X
+75	7427	74.77	
21+0	7519	75.69	X
+25	7629	76.79	
+50	7737	77.87	X
+75	7845	78.95	
22+0	7953	80.03	X
+25	8063	81.13	
+50	8171	82.21	
+75	8279	83.29	
23+0	8387	84.37	
+25	8488	85.38	
+50	8574	86.24	
+75	8646	86.96	
24+0	8703	87.53	
+25	8753	88.03	
+50	8803	88.53	
+75	8853	89.03	
25+0	8903	89.53	
+25	8953	90.03	
+50	9003	90.53	
+75	9053	91.03	
26+0	9103	91.53	

7570

SLOPE STAKES - STANLEY

1130

Sta	South	North
0-1+63	22'c	23'2c
0-1	22'2c	25'c
0+0	22'c	23'2c
1+0	20'2c	21'c
2+0	19'2c	20'2c
3+0	20'c	20'c
4+0	19'c	18'2c
5+0	19'c	18'2c
6+0	19'c	19'c
7+0	20'c	16'f
7+97	20'2c	18'c
8+0	20'c	17'2c
9+0	20'2c	18'c
10+0	19'c	20'c
11+0	18'2c	21'c
12+0	18'2c	19'2c
13+0	18'2c	17'2c
14+0	18'c	18'c
15+0	17'f	16'f
16+0	19'f	17'f
17+0	21'f	17'f
18+0	26'c	22'c
19+0	23'2c	21'c
20+0	22'c	19'c
21+0	21'c	18'c

PI

38
21
17

Red

131

Sta	South	North
22+0	19'2c	15'f
23+0	23'c	20'2c
24+0	21'2c	18'c
25+0	19'c	16'f
26+0	15'2f	16'f
27+0	17'2f	19'f
28+0	16'f	17'f
29+0	19'2c	19'c
30+0	19'c	15'2f
31+0	18'2c	16'f
32+0	19'c	19'c
33+0	20'c	21'c
34+0	20'2c	20'2c
35+0	22'2c	20'c
36+0	21'2c	21'c
37+0	21'c	21'c
38+0	19'c	20'2c

Sta	South	North	
39+0	18C	17C	X
40+0	19C	20C	X
41+0	20C	21 $\frac{1}{2}$ C	X
42+0	25C	22 $\frac{1}{2}$ C	X
43+0	28 $\frac{1}{2}$ C	20C	X
44+0	30 $\frac{1}{2}$ C	23C	X
45+0	30C	24 $\frac{1}{2}$ C	X
46+0	27C	20C	X
47+0	26 $\frac{1}{2}$ C	18C	X
48+0	22 $\frac{1}{2}$ C	15 $\frac{1}{2}$ F	X
49+0	16 $\frac{1}{2}$ F	16 $\frac{1}{2}$ F	X
50+0	Bridge		
51+0	18 $\frac{1}{2}$ F	18F	X
52+0	18 $\frac{1}{2}$ F	18 $\frac{1}{2}$ F	X
53+0	18 $\frac{1}{2}$ F	18F	X
54+0	16 $\frac{1}{2}$ F	17 $\frac{1}{2}$ F	X
55+0	18F	17 $\frac{1}{2}$ F	X
56+0	18F	18F	X
57+0	18F	17 $\frac{1}{2}$ F	X
58+0	17 $\frac{1}{2}$ F	16F	X
59+0	20 $\frac{1}{2}$ C	24 $\frac{1}{2}$ C	X
60+0	19C	18C	X
61+0	18C	20 $\frac{1}{2}$ C	X
62+0	20 $\frac{1}{2}$ C	20C	X
63+0	20 $\frac{1}{2}$ C	19 $\frac{1}{2}$ C	X

Sta	South	North	
64+0	18 $\frac{1}{2}$ C	18 $\frac{1}{2}$ C	X
65+0	18 $\frac{1}{2}$ C	15 $\frac{1}{2}$ F	F
66+0	19C	18C	X
67+0	18C	18 $\frac{1}{2}$ C	X
68+0	19C	19 $\frac{1}{2}$ C	X
69+0	19 $\frac{1}{2}$ C	18 $\frac{1}{2}$ C	X
70+0	18C	15 $\frac{1}{2}$ F	X
71+0	20C	19C	X
72+0			

Retaining Wall from
Bridge

sta 88+64

21'

21 1/2'

sta 89+0

89+04

end of wall

Wall is 1' thick

Car No 36

(Sept 24) Three Cars

137

Sept 27
out
S-82799 64.5 128100

Gross
1689 408 1281

2000

64.5
128,100

1/2 out
S-79205 60.8 121700

Gross
1602 395 1217

1/2 out
S-15366 61.1 122200

Gross
1626 404 1222

Weight
121700

Gross
1689 408 1281
82799
56

ccc 74782 112,700
ccc 82990 128,300
ccc 65921 120,000
c.c. 1269 124,600
ccc 73707 126,500
ccc 65368 123,000

Cars No 74782 & 82990
not accepted arrived Sept. 24

138

Sept. 26

		Weight	
ccc	82965	✓ 63	126000
ccc	74883	✓ 59	119600
ccc	82967	✓ 62	124500
ccc	80050	✓ 61	122100
ccc	73999	✓ 60	121200
ccc	80841	✓ 59	119000
ccc	79140	✓ 63	127600

ccc. ^{ms} 747,82 112700 ¹³⁹

ccc 82990 ^{ms} 128300

ccc. 659,21120000

Cin. M. 1269 1246000

~~ccc 79140 127600~~

ccc 73707 126500

ccc 65368 123000

~~ccc ✓ 74818~~

~~ccc ✓ 82967~~

~~ccc ✓ 80050~~

~~ccc ✓ 73999~~

~~ccc ✓ 80841~~

~~ccc 79140~~