

162

162

TRAINERS BOOK

363 A

(See BK 201 p. 22)

Larney John
Draw Lincoln

Ditch starts 730' N of com
Sec line of ^{1/2} 13 + 14

Sta 12 + 19 Ditch leaves Road
+ turns W

12 + 69 Ditch goes into ~~Henry~~ ^{Zurr} ~~Larney~~

15 + 91 Ditch turns S.

28 + 74 Ditch goes onto Thomas Bullock

36 + 77 Ditch turns W along Road

38 + 83 Ditch turns S

39 + 44 Ditch goes into Peter Reutitz

49 + 0 Ditch turns SW

53 + 0 Ditch turns S

54 + 20 Ditch goes into Chester Bruner

64 + 18 Ditch turns W

~~68 + 15 Ditch goes into John Reutitz~~

72 + 31 Ditch turns S.

73 + 17 Ditch goes into Hoyt Allison

from ditch
 122' ^{SW} Wks the cor. of Chester
 Burns & J. A.
 1768' E from ditch to sec. line
 between 13-14

79+50 Ditch turns S E

316' E on Road on Peter
 Leutenitz N line to line between
 sec 13+14. at Sta 86+77

85+0 Ditch hits Railroad Right
 Way

85+90 leaves R.R. and cuts N E Cor of
 Burnett.

88+0 Ditch leaves Burnett
 and crosses into Hoyt Allison
 135' from R.R. Tracks.

99+34 Ditch turns SW

99+84 Ditch goes into Burnett

102+56 Ditch turns S.

103+78 Ditch hits Road

104+08 Ditch goes into ~~Shaw~~
 Martin Hession ~~Shaw~~

113+0 Ditch turns SW

Ditch crosses into
 122+15 Low Turpin

125+0 Ditch turns S.

132+15 Ditch turns SW

145+0 End of Ditch at Turp Line
 in the SW Cor. of Turpins 80A

Garry Hill Notes

| Stk | R | top | 7L | |
|-------|-----------------|------|--------|-----------------------------------|
| 0+0 | 9592 | 9170 | 9260 | 9175 |
| 0+20 | | | | 9205 8" N |
| 0+70 | | | 9490 | 9415 8" W |
| 1+0 | 9650 | 9224 | | |
| 2+0 | 9718 | 9210 | | |
| 2+45 | | | | 9373 8" + 10" trouble |
| 3+0 | 9706 | 9215 | | |
| 4+0 | 9664 | 9214 | | 9225 W telephon 26" telephon W 6" |
| 4+02 | | | 9310 E | |
| 5+0 | 9690 | 9203 | | |
| 6+0 | 9704 | 9182 | | |
| 7+0 | 9735 | 9167 | | |
| 8+0 | 9807 | 9152 | | |
| 9+0 | 9781 | 9157 | | |
| 9+56 | | | 9265 | telephon W 8" |
| 9+97 | | | 9204 | telephon E 6" |
| 12+0 | 9650 | 9177 | | |
| 11+0 | 9629 | 9157 | | |
| 12+0 | 9584 | 9171 | | |
| 12+49 | | 9064 | | |

D.M. on steps at Surro House
 Cl. 97.84 SE corner bottom step.

John Collins Ditch

Thomas Commons

Wyatt M^cCaslin

Alvin Londer

John Collins

Jas. Tarney

Ira W M^e Daniel

Jonathan P. Londer.

4500' Long. in 3347-18

- Richard Mynatt Det ch
 Co. line.
 O. E. Anderson on E. of ditch
 Patterson on W. of ditch
 1+59 S. Rd. Fence - Anderson N line
 1+79 E + W. Rd.
 2+0 N. Rd. Fence - Anderson So. line
 Ditch on property line
 Anderson on E,
 Prather on W.
 13+37 Prather N. line +
 Cooper So. line.
 76+55 Anderson No line +
 Bayless So line
 also Cooper N. line
 Bayless So line
 33+25 Bayless No line on W.
 side of Ditch at Julia
 Stout So. line.
 36+21 Bayless No line on E side
 of ditch + Simmons So line
 on E. side of ditch
 39+13 End of ditch

Note: Started at lower
 end of Co. line to measure ¹³

Miller Dillow Ditch
middle Loop
north of Pittsburg.

Miller + Dillon

630' E. from Ditch to $\frac{1}{4}$
section line.

0+20' Dillons N. Line.

25+65' Ditch turns W.

32+23' goes into Reser.

36+45' Ditch turns S. West.

47+35' onto Hessian + Ditch turns
west to line between Hessian
+ Stanley + Ditch turns S.

76+44' Ditch goes into Pt. Stanley

86+0' End of Ditch on 14. Stanley

E. B. Keeney

897 feet from Rd. on E. B. Keeney
S line to Ditch

34+82 Prof. line

59+32 $\frac{1}{2}$ of Rd. Crat + W.1299 feet E on Rd to Rd running
North.72+76 looks into J. D.
Keeney Ditch98+0 Ditch goes into Leo Plagle
120+65 to $\frac{1}{2}$ of Rd Running
N + S.

136+25 Prof. line

142+46 Prof. Line

151+0 End of Ditch

89

72

1.7

42

Strawhill Leach
 John C. Mill
 Montgomery
 Sharp Ditch

9+69 Prof. Line Bergen W line

47+74 Armstrongs & Lee

53+36 End of Ditch at
 Armstrongs W. Line

43

Arm 522 feet Long
 Comes into Main at
 Sta 17+75

all open part of
 arm is on Esther Montgomery

Layman Kenney

Ditch starts 2505 from Co. line
 Ditch turns North to Co line
 at Sta 4+15

Ditch turns W. at Sta 6+61
 16+27 Prof. line

Ditch turns S Sta 23+40
 Ditch turns W Sta 29+79

Ditch turns S Sta 35+90

Ditch turns W 38+75 -
 E of Rd Sta 52+72

Sta 63+26 End of Ditch

Samady Danks

Lib Broken through
and sunken through
Quick Sands.

{ 21'
19'
24' Pasture
28'
33'
107' through corn field

{ 20'
15'
85' } oats.

300' that may be broken
through

Zucker Drain

- 0+00 N 25° E
 3+50 Def L 23° 25'
 4+80 Def L 54°
 6+70 Def R 13° 24'
 7+80 Def L 19° 40'
 8+96 N. & S. Fence, E line of
 10+62 Def. R. 30° 01'
 13+45 Def R. 27° 22'
 15+40 Def L. 85° 17'
 16+36 No. & S. fence but not
 property line
 19+56 Def. R 50° 20'
 20+02 So. Rd. Fence of E. & W Rd
 and No line of J. B. Dugan
 20+18 E E & W Rd.
 20+38 N Rd. Fence & So line
 of Mark Kennedy
 747' from Ditch E to
 Dugan's E line of 80 a.
 24+10 Def R 42° 57'
 24+22 E. & W. Fence
 27+62 E & W Fence
 29+0 Def R 0° 35'

J. B. Dugan - W. line Charles Brush.

- 32+72 Def L $0^{\circ}26'$
 34+20 E. + W. Fence
 37+31 Def L $0^{\circ}46'$
 50+18 \perp State Rd.
 50+32 Def L $17^{\circ}57'$
 634' From ditch to Rd
 running N.
 58+22 Def L $48^{\circ}16'$
 62+10 E. Road fence of N. + S. Rd.
 62+28 \perp Rd. N. + S.
 62+46 W. Rd. fence of N. + S. Rd.
 62+56 Def R. $61^{\circ}40'$
 68+80 S. Right of way line of
 Big Four.
 69+90 Def L $57^{\circ}46'$
 72+75 Def R $22^{\circ}01'$
 73+07 Cross E + W fence.
 N. Right of way of
 F. N. D. + E

- 74+0 Def L $25^{\circ}43'$
 78+15 Def R, $22^{\circ}10'$
 80+20 End.
 59' N to So. line of
 Sec.
 748' E to N. + S. Rd.
 and stone.
 10" No. then change
 to 8" about $\frac{1}{2}$ mile.
 12" SW.
 677' So. from Sec line to
 Ditch
 681' From Ditch So. to State
 Rd. from Sta 62+28 So.

1554

Sta. Gd. Sta. Stk. Bank Bottom Bank E

Flow Line of Ross Ditch

| | | | | | | |
|-------|------|------|--------------------|--------------------|--------------------|--|
| 0- | | | | | | |
| 0+0 | 4525 | 4580 | 4180 ²⁵ | 3630 ⁴⁵ | 3545 ⁵⁰ | |
| 2+0 | 4291 | 4328 | 4335 ³ | 3835 ⁶ | 3650 ²⁰ | |
| 4+80 | 4409 | 4455 | 4277 ⁷ | 4133 ¹⁹ | 3860 ¹⁰ | |
| 6+70 | 4369 | 4406 | 4382 ³ | 4172 ⁵ | 3973 ¹⁴ | |
| 7+80 | 4479 | 4511 | 4473 ² | 4170 ¹⁰ | 4045 ²⁰ | |
| 10+0 | 4358 | 4414 | 4472 ⁵ | 4250 ³ | 4126 ⁸ | |
| 12+0 | 4393 | 4432 | 4317 ² | 4290 ⁵ | 4140 ¹⁰ | |
| 14+0 | 4744 | 4780 | 4655 ² | 4390 ⁶ | 4140 ¹³ | |
| 16+0 | 4799 | 4889 | 4744 ³ | 4440 ⁶ | 4248 ¹⁵ | |
| 18+0 | 4864 | 4923 | 4846 ² | 4514 ⁶ | 4308 ¹⁵ | |
| 20+0 | 4760 | 4800 | 4706 ⁴ | 4555 ⁶ | 4365 ¹⁰ | |
| 22+0 | 4724 | 4780 | 4668 ³ | 4540 ⁶ | 4337 ¹² | |
| 24+10 | 4770 | 4810 | 4760 ⁴ | 4578 ⁶ | 4376 ¹⁰ | |
| 26+0 | 4795 | | 4797 ¹³ | 4640 ⁶ | 4490 ¹⁰ | |

Bottom Bank Bank out from Bank

| | | | |
|--------------------|--------------------|--------------------|--|
| 3380 | | | |
| 3615 ⁵⁴ | 3945 ⁶⁰ | 4496 ⁶⁹ | |
| 3820 ³⁰ | 4300 ³⁵ | 4305 ⁷⁰ | |
| 4027 ²⁵ | 4198 ³⁰ | 4200 ⁴⁵ | |
| 4131 ¹⁸ | 4412 ²² | 4463 ²⁶ | |
| 4165 ²⁹ | 4451 ²⁷ | 4449 ³¹ | |
| 4243 ¹² | 4459 ²⁵ | 4492 ²⁶ | |
| 4281 ¹³ | 4437 ¹⁸ | 4499 ²² | |
| 4335 ¹⁶ | 4695 ²² | 4720 ²⁵ | |
| 4440 ¹⁸ | 4745 ²³ | 4814 ²⁶ | |
| 4495 ¹⁷ | 4564 ²⁰ | 4734 ²⁷ | |
| 4515 ²⁵ | 4728 ²⁰ | 4781 ²¹ | |
| 4563 ¹⁶ | 4710 ²⁰ | 4751 ²⁴ | |
| 4580 ²³ | 4755 ³⁰ | 4828 ³⁵ | |
| 4625 ¹⁵ | 4737 ¹⁹ | 4800 ²² | |

1555
04781
04408
04810

B.M.
on E.
end of
So. Rail
of Bridge
at Sta
20+18
E.L.
50.00

56

| | Gd. at Stk | Stk | Bank | Bottom Bank | E |
|------|---------------|---------------|--------------------|--------------------|---------------------|
| 28+0 | 4736 | 4795 | 4714 ³ | 4605 ⁹ | 4604 ¹⁶ |
| 30+0 | 4914 | 4968 | 4835 ² | 4666 ⁶ | 4559 ¹⁰ |
| 32+0 | 4860 | 4911 | 4851 ⁴ | 4743 ⁶ | 4570 ¹⁰ |
| 34+0 | 4867 | 4910 | 4847 ³ | 4793 ⁴ | 4560 ¹⁰ |
| 36+0 | 50.11 | 50.61 | 4991 ³ | 4761 ⁶ | 4641 ¹⁰ |
| 38+0 | 5029 | 5069 | 5016 ³ | 4828 ⁹ | 4632 ¹⁷ |
| 40+0 | 4992 | 5042 | 5110 ⁸ | 4884 ¹⁷ | 4720 ²¹ |
| 42+0 | 50.66 | 51.11 | 50.75 ⁵ | 4890 ¹² | 47.75 ²² |
| 44+0 | 51.66 | 52.04 | 51.28 ⁴ | 4945 ¹⁰ | 47.21 ¹⁰ |
| 46+0 | 5200 | 5256 | 51.78 ³ | 4973 ⁹ | 47.73 ¹⁵ |
| 48+0 | 5248 | 5300 | 5252 ³ | 5023 ⁹ | 4840 ¹⁵ |
| 50+0 | 5415 | 5470 | 5200 ⁴ | 5048 ⁹ | 4910 ¹⁰ |
| 52+0 | 5311 | 5370 | 5267 ⁴ | 5028 ⁹ | 4862 ¹⁰ |
| 54+0 | 5465 | 5588 | 5368 ⁴ | 4996 ⁶ | 4878 ¹¹ |
| 56+0 | 5387 | 5447 | 5300 ³ | 5023 ⁷ | 4923 ¹⁰ |
| 58+0 | 5389 | 5446 | 5371 ³ | 5125 ⁹ | 4950 ¹⁰ |
| 60+0 | 5510 | 5559 | 5472 ³ | 5055 ⁶ | 4993 ¹³ |
| 62+0 | 5460 | 5413 | 5470 ⁵ | 5155 ¹⁰ | 5012 ¹⁴ |
| | El. of | 76. of tile | Sta 6 | 765 | |
| 64+0 | 5576 | 5646 | 5378 ⁷ | 5230 ¹³ | 5020 ¹⁵ |
| 66+0 | 5646 | 5789 | 5585 ⁷ | 5314 ¹⁰ | 6085 ¹⁶ |
| 68+0 | 5626 | 5659 | 5608 ⁷ | 5284 ¹¹ | 5773 ¹⁵ |
| | El. of three | tile = tile A | 5254 | B | 5291 |
| | | | (15'1) | | |
| 69+0 | 5929 | 5975 | 5721 ⁴ | 5344 ¹⁰ | 5764 ¹³ |
| 72+0 | 5950 | 5986 | 5730 ⁵ | 5347 ¹⁰ | 5243 ¹⁵ |

57

| | Bank | Bank | out from Bank | |
|--|---------------------|---------------------|---------------------|----------------|
| | 4614 ²¹ | 4769 ²³ | 4812 ²⁶ | 049.95 |
| | 4710 ²⁸ | 4840 ²⁵ | 4853 ²⁷ | 048.88 |
| | 4729 ²⁶ | 4813 ²⁹ | 4878 ³³ | 050.60 |
| | 4764 ²⁴ | 4847 ²⁹ | 4912 ³² | 050.69 |
| | 4826 ²⁵ | 4821 ²⁸ | 4890 ³⁰ | 051.12 |
| | 4825 ³⁵ | 4990 ⁴⁰ | 50.10 ⁴⁵ | 053.00 |
| | 4908 ³⁴ | 4944 ⁴¹ | 49.22 ⁴³ | |
| | 48.20 ³⁴ | 49.90 ³² | 49.80 ³⁵ | |
| | 49.45 ²³ | 50.81 ²⁹ | 50.49 ³² | B.M. on cut |
| | 4990 ²¹ | 51.50 ²⁵ | 51.55 ²⁸ | S.W. abutment |
| | 5021 ¹⁹ | 5205 ²⁶ | 5225 ²⁷ | of Bridge |
| | 5065 ²⁷ | 5309 ³⁰ | 5579 ³⁵ | Sta 50+0 |
| | 5038 ¹⁹ | 5280 ²⁰ | 5199 ²⁴ | El. 5446 |
| | 5040 ¹⁸ | 5348 ²⁵ | 5309 ²⁸ | 05448 |
| | 5130 ¹⁴ | 5440 ²⁹ | 5415 ²⁶ | |
| | 5125 ¹⁸ | 5390 ²⁹ | 5400 ²⁹ | B.M. on |
| | 5241 ¹⁶ | 5481 ²⁰ | 5471 ²³ | end of cut |
| | 5250 ¹⁷ | 5518 ²³ | 5552 ²⁶ | Rail of Bridge |
| | El. 5145 | | | Sta 62+20 |
| | 5230 ¹⁶ | 5580 ²⁴ | 5608 ³⁰ | El. 57.61 |
| | 5292 ¹⁹ | 5569 ²³ | 5575 ²⁷ | |
| | 5335 ²⁰ | 5598 ²⁸ | 5626 ³⁰ | B.M. on S |
| | tile C | in side ditch | 72 | corner of S |
| | | | 5240 | Rail of R.R. |
| | 5218 ¹⁷ | 5550 ²¹ | 5595 ²⁴ | Culvert |
| | 5352 ¹⁷ | 5677 ²² | 5774 ²³ | Sta 69+0 |
| | | | | El. 5967 |

| | 20'S | 10'S | Fence | 10' W |
|-------|------------------------|-------|-------|----------|
| 0+0 | | | ⌘ | |
| 1+0 | 56.00 | 55.67 | 56.78 | 55.40 |
| 2+0 | 58.06 | 57.95 | 56.45 | 57.55 |
| 3+0 | 59.76 | 58.72 | 57.12 | 56.55 |
| 4+0 | 58.51 | 58.55 | 58.06 | 57.18 |
| 5+0 | 58.80 | 58.95 | 58.10 | 57.50 |
| 6+0 | 59.18 | 59.36 | 58.45 | 57.75 |
| 7+0 | 58.10 | 58.35 | 56.58 | 57.95 |
| 8+0 | 58.00 | 57.97 | 56.85 | 57.41 |
| 8+67 | 7l. Culvert under R.R. | | | 55.10 |
| 8+82 | 7l. 10" Pipe | | | 53.95 |
| 9+0 | 57.26 | 57.18 | 56.62 | 56.70 |
| 9+61 | 12" Pipe 7l. | | | 54.09 |
| 10+0 | 57.76 | 57.70 | 57.18 | 58.06 |
| 11+0 | 59.00 | 59.25 | 58.41 | 59.38 |
| 12+0 | 59.18 | 59.61 | 58.60 | 59.90 |
| 13+0 | 58.65 | 59.15 | 59.04 | 59.05 |
| 14+0 | 58.45 | 58.68 | 58.50 | 58.70 |
| 15+0 | 58.71 | 58.61 | 58.14 | 56.84 W. |
| 15+97 | 57.15 | 57.22 | 57.58 | 58.00 |

15+0 W. Fence

① 62.25

8+67. Culvert 2'-0"

MAIN #1

| Sta | Stk | Ground | Sta | Stk | Ground |
|----------------|-------|--------|--------------|-------|--------|
| 0+0 | 16.48 | 15.96 | 23+0 | 2060 | 2015 |
| 1+0 | 16.90 | 16.21 | 24+0 | 2103 | 2051 |
| 2+0 | 17.47 | 17.23 | 25+0 | 2161 | 2117 |
| 3+0 | 18.08 | 17.53 | 26+0 | 2030 | 1988 |
| 4+0 | 17.96 | 17.66 | | | |
| 5+0 | 18.27 | 18.00 | | | |
| 6+0 | 18.19 | 17.77 | EL. low dch. | | |
| 7+0 | 18.02 | 17.66 | | 19.55 | |
| 8+0 | 18.56 | 18.25 | | | |
| 9+0 | 19.00 | 18.64 | | | |
| 10+0 | 18.45 | 17.98 | | | |
| 11+0 | 17.77 | 17.31 | | | |
| 12+0 | 17.69 | 17.34 | | | |
| 13+0 | 17.84 | 17.41 | | | |
| 14+0 | 17.99 | 17.47 | | | |
| 15+0 | 18.31 | 17.76 | | | |
| 16+0 | 18.65 | 18.15 | | | |
| 17+0 | 19.70 | 19.23 | | | |
| 18+0 | 20.22 | 19.80 | | | |
| due W-19+00 | 20.20 | 19.84 | | | |
| 20+0 | 20.56 | 20.10 | | | |
| 21+0 | 20.30 | 19.80 | | | |
| 22+0 | 20.25 | 19.79 | | | |

790' No from SE corner
to the R.R. Fence

B.M. on W. end of Tdwell
50' No of Sta 0+0.

EL. 10.00

EL. side ditch 8.92

Essex Falls

Essex Tils

Arm # 1 to 50 - Starts Sta 000

| Sta | sk | sd |
|-------------------|-------|-------|
| 0+0 | - | - |
| 1+0 | 16.97 | 16.52 |
| 2+0 | 16.90 | 16.52 |
| 125' W 3+0 | 16.92 | 16.55 |
| 4+0 | 16.52 | 16.11 |
| 5+0 | 15.95 | 15.55 |
| 175' W 6+0 | 15.30 | 14.95 |
| 7+0 | 15.50 | 15.03 |
| 225' W 8+0 | 16.25 | 15.86 |
| 9+0 | 15.68 | 15.45 |
| 10+0 | 16.48 | 16.10 |
| 100' to +350 W | | |

66

about 30 a little W,

Arm # 2 - starts at Sta 3+0

| Sta | sch | Gd. |
|--------------------|-------|-------|
| 0+0 | - | - |
| 1+0 | 1718 | 16.78 |
| 2+0 | 1648 | 16.10 |
| 3+0 | 1607 | 15.71 |
| 4+0 | 15.91 | 15.51 |
| 5+0 | 1599 | 15.52 |
| curved - w. 6+0 | 1731 | 16.83 |
| 7+0 | 1804 | 17.63 |
| 100' no AS 8+0 | 1736 | 16.95 |
| some 9+0 | 1710 | 16.78 |
| some 10+0 | 1685 | 16.46 |
| 11+0 | 1700 | 16.55 |
| 75' no 12+0 | | |

67

about due W

Sub Arm # 1 to Arm # 2 - Sta 4+0

| Sta | sch | Gd. |
|----------------|-------|-------|
| 0+0 | | |
| 1+0 | 16.05 | 15.56 |
| 2+0 | 1609 | 15.59 |
| 3+0 | 1645 | 15.92 |
| 4+0 | 1700 | 16.55 |
| 5+0 | 17.10 | 16.70 |
| 5+50 | - | |

Pond - EL. - 15.50

68

Arm #3 to So. - Sta 12+0

Out

Sta Sth Gd.

| | | |
|-----|-------|-------|
| 1+0 | 17.75 | 17.28 |
| 2+0 | 18.28 | 17.80 |
| 3+0 | 18.28 | 17.79 |
| 4+0 | 17.36 | 16.95 |
| 5+0 | 17.21 | 16.81 |
| 6+0 | 17.52 | 16.85 |

Sta 5+0 is 250' W of Sta 11+0 on

Arm #2.

6+0 is 30' N of S line

slightly SW
S 15° W

Arm #4 to So. - Sta 15+0

Sta Sth Gd.

| | | |
|------------|-----------|-------|
| 1+0 | 18.30 | 17.75 |
| 2+0 | 18.79 | 18.27 |
| 3+0 | 18.90 | 18.26 |
| 4+0 | 18.80 | 18.32 |
| 5+0 | 18.50 | 17.95 |
| 5+45 | 18.29 | 17.81 |
| is 350' | West | |
| of Sta 6+0 | on Arm #3 | |

69

70

Arm #5 to So. Sta 21+0

| Sta | Stk | Gd. |
|------|------|------|
| 1+0 | 2034 | 1985 |
| 2+0 | 1954 | 1911 |
| 3+0 | 1910 | 1867 |
| 3+75 | 1890 | 1857 |
| 4+0 | 1903 | 1872 |
| 4+80 | 1844 | 1800 |

is 25' No of So line

Sub arm of arm #5

Sta -3+75 to barn & house.

1 - run West

| Sta | Stk | Gd. |
|------|------|------|
| 1+0 | 2005 | 1945 |
| 2+0 | 2000 | 1952 |
| 3+0 | 1934 | 1895 |
| 3+32 | 1950 | 1910 |

100' No
of So line

71

House is 50' No. of So line
and 50' from W line.Barn 250' E. of Rd.
" 40' N. of So. line

Sub arm to Sub arm Sta 2+0

| SW. | Stk - | Gd. |
|--------|-------|------|
| 1+0 - | 1925 | 1882 |
| 1+40 - | 1897 | 1865 |

B.M. on rock at
NE cor of barn
EL. - 19.45EL on Rd. at SE cor
of house - EL - 20.18

Arm # 6 So. to Garden
Sta 2440 - SW

| Sta | gth | Gd. |
|-----|------|-------|
| 1+0 | 2107 | 20.85 |
| 2+0 | 2078 | 20.44 |
| 3+0 | 2076 | 20.41 |
| 4+0 | 2060 | 20.22 |

40' E. of Rd. 125' No. of S. line

| Sta | Sch | Gd | EL | #1 No. | State 50' So of No. |
|--------------------------|-------|-------|----|--------|---------------------------|
| 0+0 | 15.14 | 14.54 | | | 10.00 |
| 1+0 | 15.40 | 14.94 | | | |
| 2+0 | 15.55 | 15.08 | | | |
| 3+0 | 15.94 | 15.55 | | | |
| 4+0 | 17.74 | 17.20 | | | |
| 5+0 | 17.95 | 17.48 | | | |
| 6+0 | 18.35 | 17.96 | | | |
| 7+0 | 19.19 | 18.94 | | | |
| 8+0 | 18.90 | 18.46 | | | |
| 9+0 | 20.06 | 19.50 | | | |
| 50' E. of W. 7 mile line | | | | | |
| 75' So. of No. line | | | | | |

75

Essex Hills

Run # 2 on No. Sta 10+0

| | Sch | Gd. |
|--------------------------------|-------|-------|
| 1+0 | 18.36 | 17.75 |
| 2+0 | 18.40 | 17.90 |
| 3+0 | 18.74 | 18.40 |
| 4+0 | 19.44 | 19.02 |
| is 125' E. of Sec line at cor. | | |
| and 225' S of Sta 9+0 Main T2 | | |

76

Arm # 3 No. NW. Sta 14+0

| Sta | Stk | Gd. |
|------|------|------|
| 1+0 | 1883 | 1820 |
| 2+0 | 1864 | 1812 |
| 3+0 | 1904 | 1865 |
| 4+0 | 1925 | 1892 |
| 5+0 | 1970 | 1900 |
| 5+90 | 2006 | 1962 |

10' So of fence

Sub Arm # 1 - Sta 3+0

N. 10° E. —
 Sta Stk Gd.
 —

| | | |
|------|------|------|
| 1+0 | 1871 | 1817 |
| 1+75 | 1883 | 1836 |

Pond - EL - 1730

77

Arm # 4 No.

71 15° W Sta 25+0

Sta sek Gd.

1+0 2210 2163

2+0 2187 2128

3+0 2188 2146

4+0 2272 2232

is 50' E. of Rd + 75' So. of No line

75' W - low ground E. W. of

Sta 2+50 - 20.50

Tucker Drain - Tiled Part

| | Gd. | Time | Cont. | |
|------|-------|-------|-------|-----------------------|
| 0+0 | 49.52 | 56.15 | 6.63 | 6'-8" |
| 0+50 | 49.73 | 56.36 | 6.63 | 6'-8" |
| 1+0 | 49.94 | 56.63 | 6.69 | 6'-8 $\frac{1}{4}$ " |
| 1+50 | 50.15 | 57.68 | 7.53 | 7'-6 $\frac{1}{4}$ " |
| 2+0 | 50.36 | 58.81 | 8.45 | 8'-5 $\frac{1}{2}$ " |
| 2+50 | 50.57 | 59.53 | 8.96 | 8'-11 $\frac{1}{2}$ " |
| 3+0 | 50.78 | 59.39 | 8.61 | 8'-7 $\frac{1}{2}$ " |
| 3+50 | 50.99 | 59.35 | 8.36 | 8'-4 $\frac{1}{4}$ " |
| 4+0 | 51.20 | 59.26 | 8.06 | 8'-0 $\frac{3}{4}$ " |
| 4+50 | 51.41 | 58.74 | 7.33 | 7'-4" |
| 5+0 | 51.62 | 59.30 | 7.68 | 7'-8 $\frac{1}{4}$ " |
| 5+50 | 51.83 | 59.79 | 7.96 | 7'-11 $\frac{1}{2}$ " |
| 6+0 | 52.04 | 59.77 | 7.73 | 7'-9" |
| 6+50 | 52.25 | 59.55 | 7.30 | 7'-3 $\frac{1}{2}$ " |
| 7+0 | 52.46 | 58.90 | 6.44 | 6'-5 $\frac{1}{4}$ " |
| 7+50 | 52.67 | 58.50 | 5.83 | 5'-10" |
| 8+0 | 52.88 | 58.42 | 5.54 | 5'-6 $\frac{1}{2}$ " |
| 8+50 | 53.09 | 58.37 | 5.28 | 5'-3 $\frac{1}{4}$ " |
| 9+0 | 53.30 | 58.20 | 4.90 | 4'-11" |
| 9+60 | 53.56 | 58.10 | 4.54 | 4'-6 $\frac{1}{2}$ " |

5615
4952
6.63

5926
5120
806

5874
5141
733

5930
5162
768

5955
5225
730

5850
5267
583

5979
5183
796

5890
5246
644

5837
5309
529

5810
5356
454

5636
4973
663

5663
4994
669

5768
5015
753

5935
5099
836

5881
5036
845

5953
5057
896

5939
5078
961

5977
5204
773

5842
5288
554

5820
5330
490

82

| | CHECK ON | TILE - | TUCKER | DRAIN |
|------|-----------|--------|-----------|-------|
| Sta | FL. GRADE | TOP. | CHECK TOP | |
| 0+0 | 49.52 | 51.19 | 51.21 | |
| 0+50 | 49.73 | 51.40 | 51.46 | |
| 1+0 | 49.94 | 51.61 | 51.83 | |
| 1+50 | 50.15 | 51.82 | 52.02 | |
| 2+0 | 50.36 | 52.03 | 52.15 | |
| 2+50 | 50.57 | 52.24 | 52.29 | |
| 3+0 | 50.78 | 52.45 | 52.60 | |
| 3+50 | 50.99 | 52.66 | 52.70 | |
| 4+0 | 51.20 | 52.87 | 52.96 | |
| 4+50 | 51.41 | 53.08 | 53.77 | |
| 5+0 | 51.62 | 53.29 | 53.71 | |
| 5+50 | 51.83 | 53.50 | 53.71 | |
| 6+0 | 52.04 | 53.71 | 54.00 | |
| 6+50 | 52.25 | 53.92 | 54.02 | |
| 7+0 | 52.46 | 54.13 | 54.12 | |
| 7+50 | 52.67 | 54.34 | | |
| 8+0 | 52.88 | 54.55 | | |
| 8+50 | 53.09 | 54.76 | | |
| 9+0 | 53.30 | 54.97 | | |
| 9+60 | 53.56 | 55.23 | | |

49.52
 1.67
 51.19

48.62

83

55.51
 51.21
 4.30
 1.70
 6.00

49.40

0888

$$\begin{array}{r} 66 \\ 66 \overline{) 470.0} \\ \underline{396} \\ 740 \\ \underline{660} \\ 800 \\ \underline{792} \\ 80 \\ \underline{660} \\ 140 \end{array}$$

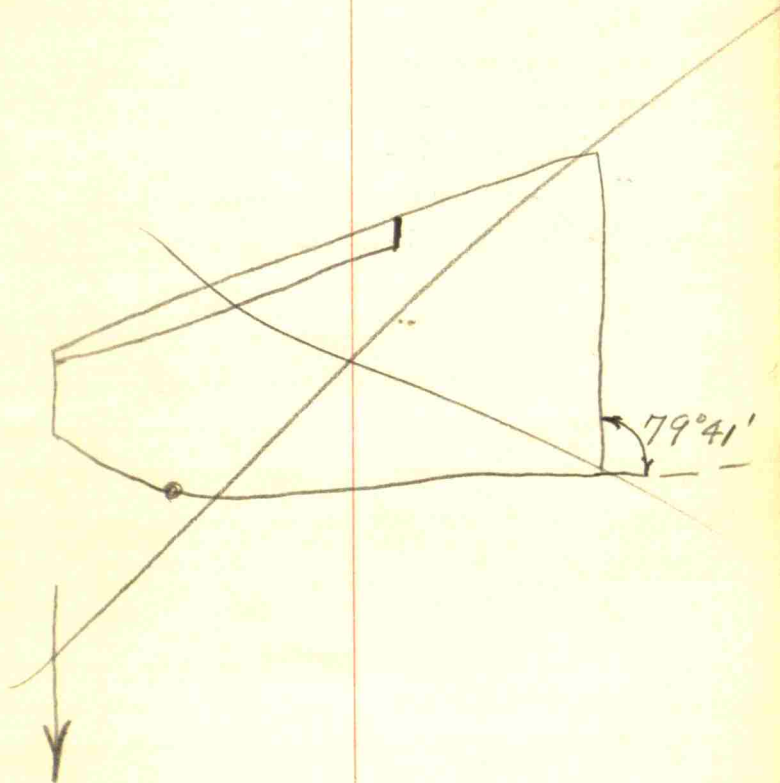
$$\begin{array}{r} 66 \\ 66 \overline{) 396} \\ \underline{396} \\ 0 \end{array}$$

$$\begin{array}{r} 66 \\ 66 \overline{) 396} \\ \underline{396} \\ 0 \end{array}$$

$$\begin{array}{r} 65 \\ 66 \overline{) 390} \\ \underline{390} \\ 0 \end{array}$$

$$\begin{array}{r} 4740 \end{array}$$

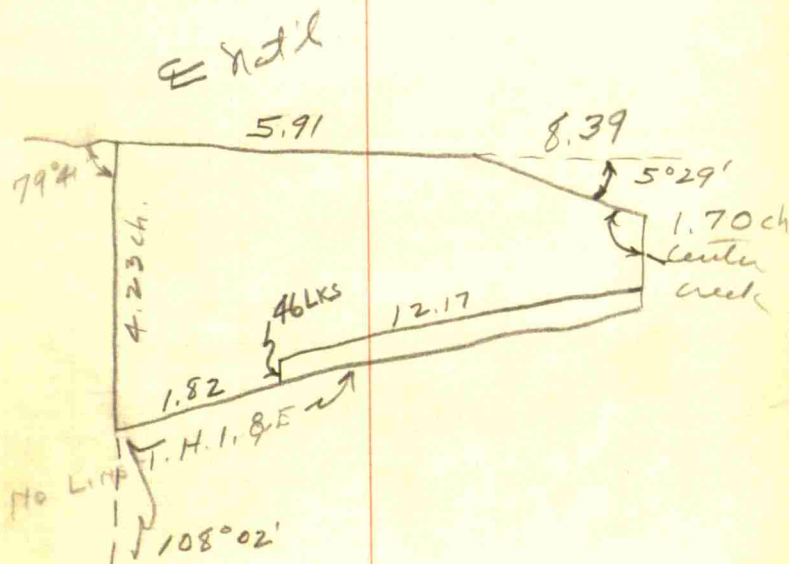
2389



E. H. Hiss

SW⁴ - 25-15-1E

Beg at stone 13.73 ch. E of SW
 corner said sec. running E. on
 sec line 13.79 ch to creek.
 Th. No. 19.29 ch. - N 4° W - 7.28
 ch - N 3° W - 1.40 ch. Th. E
 N 20³/₄° W - 2.11 ch - N 19° E
 3 ch - N 41³/₄° E - 4.17 ch
 N 3¹/₂ ch to E Nat'l Rd at west
 end bridge thence N 89° W
 2.91 ch in E Rd. - thence S 69¹/₂° W
 14.38 ch - S 34.64 ch to beg
 52.26



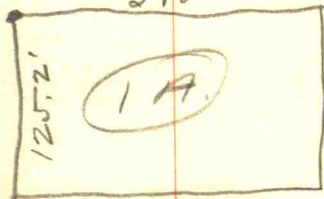
Virgil McFadden

R.R. #1

NW ⁴⁰⁰ 25-15-1E

Plainfield

348'



See book 202 page 41

I do not know what this
survey was for or who made it.
Stanley Skittle

Starting point 219' E from Ditch
to $\frac{1}{4}$ section line.

0+35' Missions N. line.

6+40' Ditch turns west $\frac{1}{4}$.

13+50' Ditch turns S. west

19+52' Ditch goes into McDaniel,

21+50' Ditch turns South

37+54' Ditch goes into Wyatt McArthur

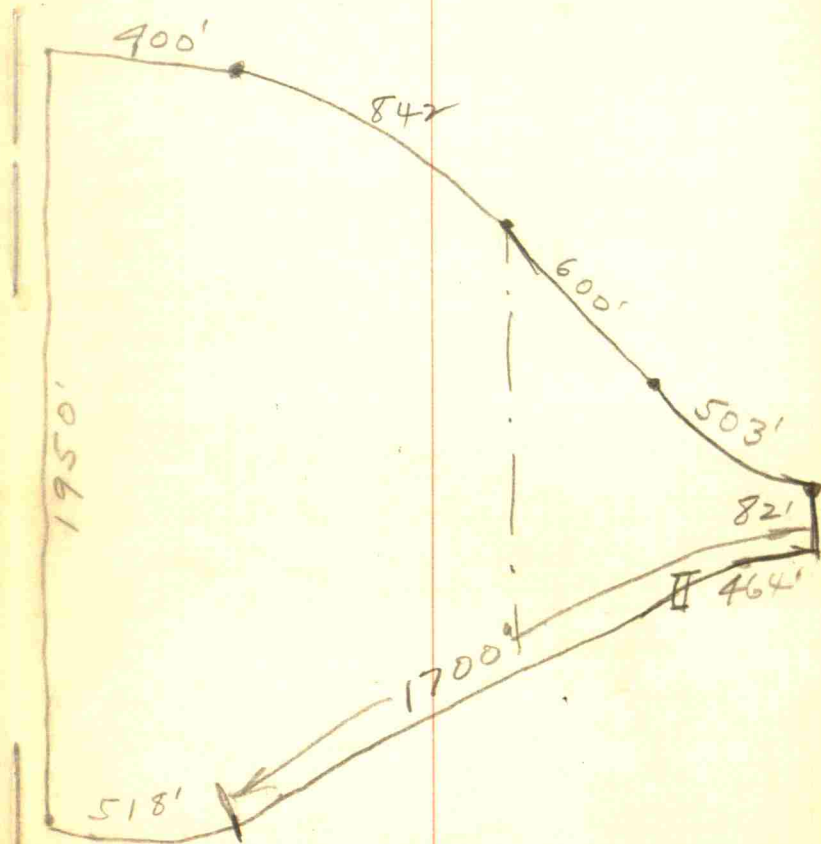
45+54' Ditch ends. in " "

John Collins Ditch

Hearing on 12 of May 1928

| | | | |
|---------------------------------|-----|----|---------------------|
| Tom Casserly | 10- | | |
| Harry Vidito | 20- | 4- | X |
| Best Sloan | 20- | 5- | X |
| Everett W ^{son} (Bros) | 15- | | |
| Notes C.E. | 80- | | X |
| Kelley T.J. | 30- | 3 | 7 from Brookshire X |
| Lowder William | 56- | | X |
| Cummings Dan | 25- | | X |
| Tarpey Job. | 20- | 2 | X |
| Mission Hanna | 76- | 4 | X |
| McDaniel | 55- | | X |
| Wyatt W ^{son} Caslin | 20- | | X |
| John Fillingim | 36- | | X |
| Lowder J.P. | 6- | | X |
| Tarpey Thomas | 20- | | X |

CO. HOME FARM
GOLF CLUB.



8.975

986
 927
1911.3
 9.565
 9.51
 4.74
4.77

8.975
59

9565
 237
66955
 28695
19130
 2266905
 1104
 986
20.90

1045
 477
7315
 4180
498465

499
 227
213
 9.38

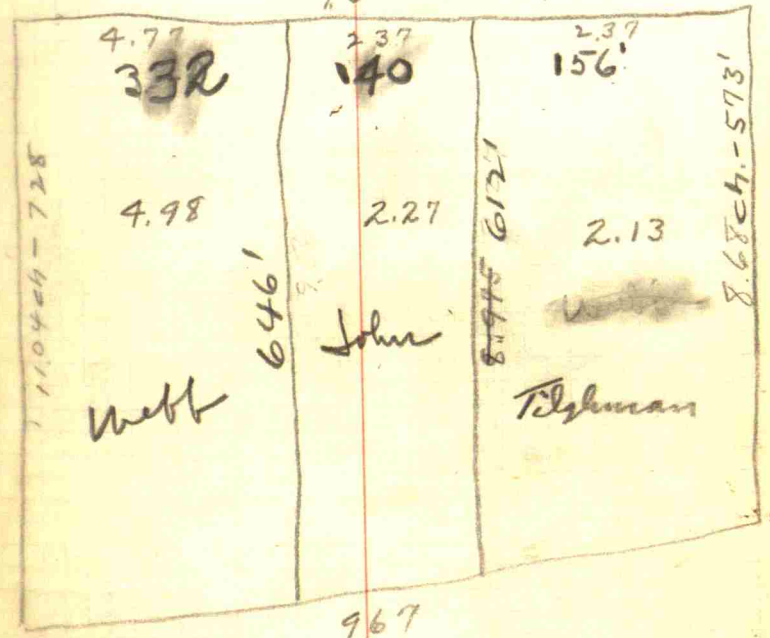
2.37
 66
14222
156.22

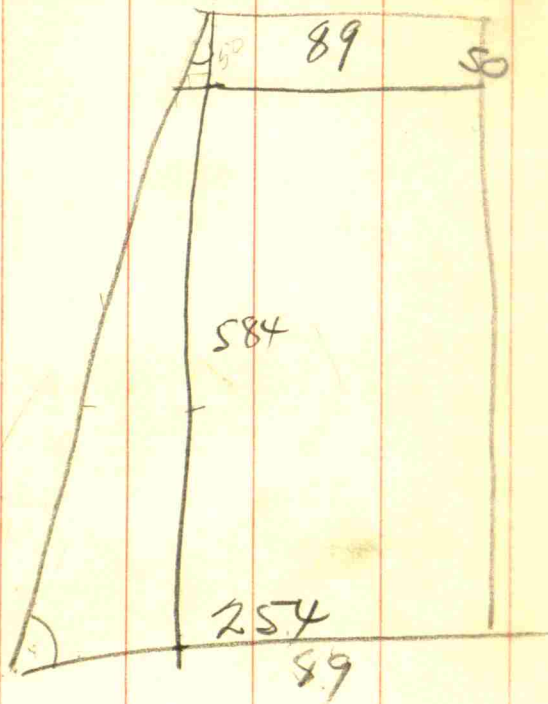
628
 296
2332
 166

JOHN H LISBY PARTITION
TOTAL - 9.48 A

Sec 6-14-2W

9.51





| Sine. | Tan. | Sec. | Cosec. | Cotg. | Cosin. | Angle. | Sine. | Tan. | Sec. | Cosec. | Cotg. | Cosin. | | |
|-------|------|--------|----------|----------|--------|--------|-------|-------|----------|----------|-------|--------|--------|----|
| 0 | 0 | 1. | ∞ | ∞ | 1. | 90 | 0 | 0 | ∞ | ∞ | 1. | 90 | | |
| 0029 | 0029 | | 343.8 | 343.8 | I. | 50 | 8 | .1392 | .1405 | 1.0088 | 7.185 | 7.115 | .99027 | 82 |
| 0058 | 0058 | | 171.9 | 171.9 | .99998 | 40 | 10 | .1421 | .1435 | 1.0102 | 7.040 | 6.968 | .98986 | 50 |
| 0087 | 0087 | | 114.6 | 114.6 | .99996 | 30 | 20 | .1449 | .1465 | 1.0107 | 6.900 | 6.827 | .98944 | 40 |
| 0116 | 0116 | 1.0001 | 85.94 | 85.94 | .99993 | 20 | 30 | .1478 | .1495 | 1.0111 | 6.766 | 6.691 | .98902 | 30 |
| 0145 | 0145 | 1.0001 | 88.76 | 88.75 | .99989 | 10 | 40 | .1507 | .1524 | 1.0115 | 6.636 | 6.561 | .98858 | 20 |
| 0175 | 0175 | 1.0002 | 87.30 | 87.29 | .99985 | 89 | 50 | .1536 | .1554 | 1.0120 | 6.512 | 6.435 | .98814 | 10 |
| 0204 | 0204 | 1.0002 | 49.11 | 49.10 | .99979 | 50 | 9 | .1564 | .1584 | 1.0125 | 6.394 | 6.314 | .98769 | 81 |
| 0233 | 0233 | 1.0003 | 42.98 | 42.98 | .99973 | 40 | 10 | .1593 | .1614 | 1.0129 | 6.277 | 6.197 | .98723 | 50 |
| 0262 | 0262 | 1.0003 | 38.20 | 38.19 | .99966 | 30 | 20 | .1622 | .1644 | 1.0134 | 6.166 | 6.084 | .98676 | 40 |
| 0291 | 0291 | 1.0004 | 34.38 | 34.37 | .99958 | 20 | 30 | .1650 | .1673 | 1.0139 | 6.059 | 5.976 | .98629 | 30 |
| 0320 | 0320 | 1.0005 | 31.28 | 31.24 | .99949 | 10 | 40 | .1679 | .1703 | 1.0144 | 5.955 | 5.871 | .98580 | 20 |
| 0349 | 0349 | 1.0006 | 28.65 | 28.64 | .99939 | 88 | 50 | .1708 | .1733 | 1.0149 | 5.855 | 5.769 | .98531 | 10 |
| 0378 | 0378 | 1.0007 | 26.45 | 26.43 | .99929 | 50 | 10 | .1736 | .1763 | 1.0154 | 5.759 | 5.671 | .98481 | 80 |
| 0407 | 0407 | 1.0008 | 24.56 | 24.54 | .99917 | 40 | 20 | .1765 | .1793 | 1.0160 | 5.665 | 5.578 | .98430 | 50 |
| 0437 | 0437 | 1.0010 | 22.93 | 22.90 | .99905 | 30 | 30 | .1794 | .1823 | 1.0165 | 5.575 | 5.485 | .98378 | 40 |
| 0466 | 0466 | 1.0011 | 21.49 | 21.47 | .99892 | 20 | 40 | .1822 | .1853 | 1.0170 | 5.488 | 5.396 | .98325 | 30 |
| 0495 | 0495 | 1.0012 | 20.23 | 20.21 | .99878 | 10 | 50 | .1851 | .1883 | 1.0176 | 5.403 | 5.309 | .98272 | 20 |
| 0524 | 0524 | 1.0014 | 19.11 | 19.08 | .99863 | 87 | 10 | .1880 | .1914 | 1.0181 | 5.320 | 5.226 | .98218 | 10 |
| 0553 | 0553 | 1.0015 | 18.10 | 18.07 | .99847 | 50 | 11 | .1908 | .1944 | 1.0187 | 5.241 | 5.145 | .98163 | 79 |
| 0582 | 0582 | 1.0017 | 17.20 | 17.17 | .99831 | 40 | 10 | .1937 | .1974 | 1.0193 | 5.164 | 5.066 | .98107 | 50 |
| 0612 | 0612 | 1.0019 | 16.38 | 16.35 | .99813 | 30 | 20 | .1965 | .2004 | 1.0199 | 5.089 | 4.989 | .98050 | 40 |
| 0641 | 0641 | 1.0020 | 15.64 | 15.60 | .99795 | 20 | 30 | .1994 | .2035 | 1.0205 | 5.016 | 4.915 | .97992 | 30 |
| 0670 | 0670 | 1.0022 | 14.96 | 14.92 | .99776 | 10 | 40 | .2022 | .2065 | 1.0211 | 4.945 | 4.843 | .97934 | 20 |
| 0699 | 0699 | 1.0024 | 14.34 | 14.30 | .99756 | 86 | 50 | .2051 | .2095 | 1.0217 | 4.877 | 4.773 | .97875 | 10 |
| 0729 | 0729 | 1.0027 | 13.76 | 13.73 | .99736 | 50 | 12 | .2079 | .2126 | 1.0223 | 4.810 | 4.705 | .97815 | 78 |
| 0758 | 0758 | 1.0029 | 13.23 | 13.20 | .99714 | 40 | 10 | .2108 | .2156 | 1.0230 | 4.745 | 4.638 | .97754 | 50 |
| 0787 | 0787 | 1.0031 | 12.75 | 12.71 | .99692 | 30 | 20 | .2136 | .2186 | 1.0236 | 4.682 | 4.574 | .97692 | 40 |
| 0816 | 0816 | 1.0033 | 12.29 | 12.25 | .99668 | 20 | 30 | .2164 | .2217 | 1.0243 | 4.620 | 4.511 | .97630 | 30 |
| 0846 | 0846 | 1.0036 | 11.87 | 11.83 | .99644 | 10 | 40 | .2193 | .2247 | 1.0249 | 4.560 | 4.449 | .97566 | 20 |
| 0875 | 0875 | 1.0038 | 11.47 | 11.43 | .99619 | 85 | 50 | .2221 | .2278 | 1.0256 | 4.502 | 4.390 | .97502 | 10 |
| 0904 | 0904 | 1.0041 | 11.10 | 11.06 | .99594 | 50 | 13 | .2250 | .2309 | 1.0263 | 4.445 | 4.331 | .97437 | 77 |
| 0934 | 0934 | 1.0043 | 10.76 | 10.71 | .99567 | 40 | 10 | .2278 | .2339 | 1.0270 | 4.390 | 4.275 | .97371 | 50 |
| 0963 | 0963 | 1.0046 | 10.43 | 10.39 | .99540 | 30 | 20 | .2306 | .2370 | 1.0277 | 4.336 | 4.219 | .97304 | 40 |
| 0992 | 0992 | 1.0049 | 10.13 | 10.08 | .99511 | 20 | 30 | .2334 | .2401 | 1.0284 | 4.284 | 4.165 | .97237 | 30 |
| 1022 | 1022 | 1.0052 | 9.839 | 9.788 | .99482 | 10 | 40 | .2363 | .2432 | 1.0291 | 4.232 | 4.113 | .97169 | 20 |
| 1051 | 1051 | 1.0055 | 9.567 | 9.514 | .99452 | 84 | 50 | .2391 | .2462 | 1.0299 | 4.182 | 4.061 | .97100 | 10 |
| 1080 | 1080 | 1.0058 | 9.309 | 9.255 | .99421 | 50 | 14 | .2419 | .2493 | 1.0306 | 4.133 | 4.011 | .97030 | 76 |
| 1110 | 1110 | 1.0061 | 9.065 | 9.010 | .99390 | 40 | 10 | .2447 | .2524 | 1.0314 | 4.086 | 3.962 | .96959 | 50 |
| 1139 | 1139 | 1.0065 | 8.834 | 8.777 | .99357 | 30 | 20 | .2476 | .2555 | 1.0321 | 4.039 | 3.914 | .96887 | 40 |
| 1169 | 1169 | 1.0068 | 8.614 | 8.556 | .99324 | 20 | 30 | .2504 | .2586 | 1.0329 | 3.994 | 3.867 | .96815 | 30 |
| 1198 | 1198 | 1.0072 | 8.405 | 8.345 | .99290 | 10 | 40 | .2532 | .2617 | 1.0337 | 3.949 | 3.821 | .96742 | 20 |
| 1228 | 1228 | 1.0075 | 8.206 | 8.144 | .99255 | 83 | 50 | .2560 | .2648 | 1.0345 | 3.906 | 3.776 | .96667 | 10 |
| 1257 | 1257 | 1.0079 | 8.016 | 7.953 | .99219 | 50 | 15 | .2588 | .2679 | 1.0353 | 3.864 | 3.732 | .96593 | 75 |
| 1287 | 1287 | 1.0082 | 7.834 | 7.770 | .99182 | 40 | 10 | .2616 | .2711 | 1.0361 | 3.822 | 3.689 | .96517 | 50 |
| 1317 | 1317 | 1.0086 | 7.661 | 7.596 | .99144 | 30 | 20 | .2644 | .2742 | 1.0369 | 3.782 | 3.647 | .96440 | 40 |
| 1346 | 1346 | 1.0090 | 7.496 | 7.429 | .99106 | 20 | 30 | .2672 | .2773 | 1.0377 | 3.742 | 3.606 | .96363 | 30 |
| 1376 | 1376 | 1.0094 | 7.337 | 7.269 | .99067 | 10 | 40 | .2700 | .2805 | 1.0386 | 3.703 | 3.566 | .96285 | 20 |
| | | | | | | 82 | 50 | .2728 | .2836 | 1.0394 | 3.665 | 3.526 | .96206 | 10 |
| | | | | | | | | | | | | | 74 | |

Cotg. Cosec. Sec. Tan. Sine. Angla.

Cosin. Cotg. Cosec. Sec. Tan. Sine. Angla.