

← LETTER →

[Faint embossed mark]

LEANT BIBLE

AUG. 18, 1954
CLEAR

Walton's SUB-DIVISION

PT. SE⁴ 26-15-1E

T BURROWS.

GRAHAM.

Sta.	+	H.I.	-	El.	Corr. el.			
T.B.M.#1	5.10	105.10		100.00	150.75	0-1	S11°20'W	308'
1	4.80	103.18	6.72	98.38	149.11	1-2	S32°20'E	251' 150'
2	5.81	101.84	5.15	98.03	148.76			

(Running level for contours)

3.	2.30	102.30				"3" TO BM#1	N32°40'W	390'
3.			2.31			3-0	N26°W	365'

Sta. #3 is SW. cor. lot 4.

Sta	Dist	Brng.
0	160	S75°40'W
	122	S52°0'W
	112	S7°E

Sta	Dist	Brng.
0	292	S67°40'E
	330	S67°E
	113	S58°20'W
	140	S65°W
	193	S77°40'W
	270	S58°40'W
	256	S46°20'W
	288	S40°40'W

T.B.M. #1 - Red hd. in Cem. rd. 50' W
of sta. 0 - assumed elev = 100.00

H.I. @ 0 = 5.10

0 to 1 $\frac{308'}{258'}$ S11°20'W

0 + H.I. -
6.72

(see page No. 1)

748

E1=97

0	280	S46°E
	210	S35°20'E
1	235	S33°40'W
	335	S77°E
	290	S82°E
2	190	N66°20'W

749

E1=198

0	180	S56°E
	158	S71°E
	63	S46°20'E
1	98	S73°20'W
	180	S47°40'W
	125	S5°20'E
	205	S17°20'W
	190	S17°40'W
	210	S2°40'E

750
Elev = 99

0

238

S31°20'W

0

747
Elev = 96

1

295

S25°20'W

290

S15°40'W

310

S24°20'W

365

S1°20'E

Lot cor.

365

S9°E

Lot cor.

383

S17°40'E

360

S82°40'E

2

190

S78°W

135

S31°40'W

134

S80°40'E

101

S81°40'W

220

S33°E

749
Elev = 98

1 375 S 44° 20' E

315 S 57° E

190 S 51° 40' E

150 S 34° 40' E

70 S 71° 20' E

2 100 N 39° W

746
Elev = 95

1 380 S 12° 20' W

2 210 S 57° 20' W

180 S 3° W

190 S 17° W

300 S 51° 20' W

460 S 56° W

320 S 34° 20' W

280 S 14° 40' W

270 S 4° 40' E

325 S 30° 20' E

270 S 64° W

⁷⁴⁸
Elev = 97

2	50	S71°20'E
	15	S3°W
	125	N80°40'W
	40	N68°20'W
	240	N79°20'W

⁷⁴⁹
Elev = 98

2	85	N75°E
---	----	-------

745
Elev = 94

2 820 S63°40'W

3 230 S76°20'E

260 S72°40'E

275 S65°40'E

285 S83°40'E

746
Elev = 95

2 290 S79°W

320 S77°20'W

3 250 S64°20'E

263 S88°E

747
Elev = 96

2	260	S73°40'W
	380	N82°W
3	225	N84°40'E

744
Elev = 93

3	250	S80°E
	280	S78°20'E
	300	S85°20'E
	325	S77°20'E

743
Elev = 92

3	330	S71°40'E
	307	N85°20'E

742

E 180 = 91

3

300

S 88° E

343

S 77° 40' E

300

S 87° 40' E

744

E 180 = 93

3

340

S 69° 20' E

LEVELS - Rd#267 to
Walton's sub-division

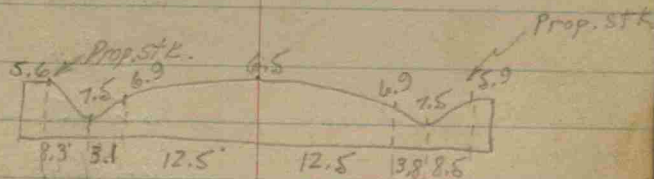
Sta.	+	H.I.	-	El.
BM#2	0.40			
	2.29		3.00	
	4.67		4.41	
	5.64		4.96	
	11.78		2.88	
	12.24		1.27	
	11.08		1.35	
BM#1			4.81	

Top of Valve nut on extreme top
of fire hydrant @ inter. Rd#267
& cemetery rd. - NE cor. inter.

STREET PROFILES

Sta.	H.I.	assumed Elev.	Corr. Elev.
BM#1	2.89	102.89	100.00
		3.7	99.19
		4.4	98.49
		4.8	98.09
		4.9	97.99
		5.1	97.79
		5.7	97.19
		6.5	96.39
		7.2	95.69
		7.6	95.29
		8.3	94.59
		9.5	93.39
		9.5	93.39
		8.1	94.79

profile spots in & sts. opp. lot corners



A. TYPICAL CROSS-SECTION

(composed of loose gravel)

N. end F.L. 1' dia. corr. metal cul.

S. end F.L. = 30' ± E. inter. "A" & "B" sts.

inter. & S of "A" & "B" sts.

street "B"

7.8 95.09

7.7 95.19

7.5 95.39

STREET "C"

6.1 96.79

6.0 96.89

6.4 96.49

6.5 96.59

6.4 96.49

8.0 94.89

8.1 94.79

6.0 96.89

5.2 97.69

5.1 97.79

3.2 99.69

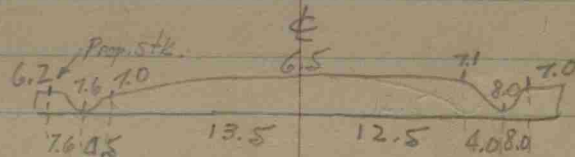
2.89 100.00

B. M. #1

± 50' ± E. of inter. "A" & "B"

opp. SE cor. lot #11

inter. "B" & "C" sts. @ ±'s.



W.) (Composed of loose gravel)

E.S.F.L. 12" corr. metal pipe. 12.5' S. SE cor. lot 4

± opp. SE. cor. lot 4.

inter. "C" st. & cem. rd. ±'s.

B. M. #1

~~CONTOURS FOR GROUND
EAST OF CULVERT ON
"C" ST. 12.5'S. SE. COR. 10+4~~

595

Aug. 20
clear.

14

LEVELS FROM BM TO
WALTON'S.T BURROWS.
GRAHAM.

Sta.	+	H.I.	-	Elev.
BM G-3	4.79	772.81		768.02
	0.61	766.32	1.10	765.71
	2.21	762.06	6.47	759.85
	5.97	761.34	6.69	755.37
	2.59	756.57	7.36	753.98
BM #1	5.95	756.68	5.84	750.73
	6.69	758.82	4.55	752.13
	4.35	760.38	2.79	756.03
	5.64	765.24	0.78	759.60
	7.33	772.41	0.16	765.08
			4.42	767.99

Br. plate in conc. post. 75' W. & Rd 40, 20' E. & Carr Rd.
(Found state Highway B.M.
about 55' E. & CARR RD. & on
N. E/W RD. 40.)

Red head in Cem. Rd.

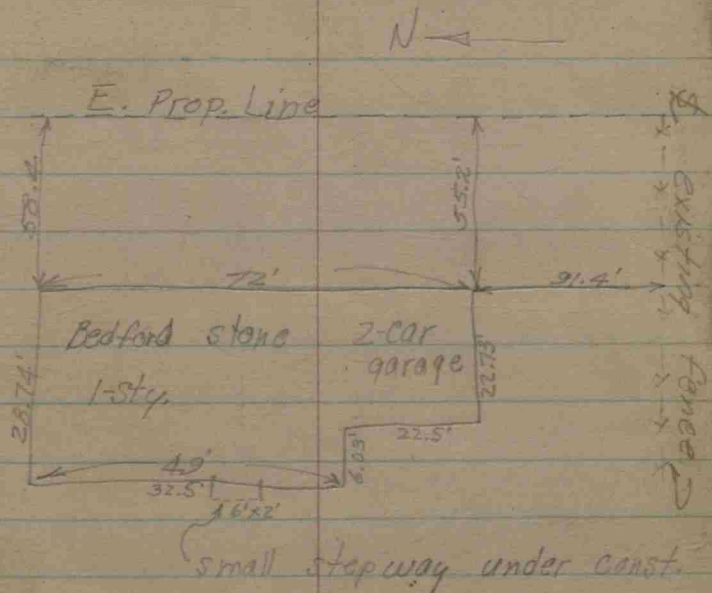
768.02
767.99

000.03 error.

Sept. 8 - Fri.
BURROWS

17

Mortgage Survey - Duncan
Eel River Twp.



Fee - 5

BURROWS
J. Graham

Sept 15-54

orin

Robert

Jones - Richardson - Wash. Twp

32-16-1E

Gravel Rd E

18

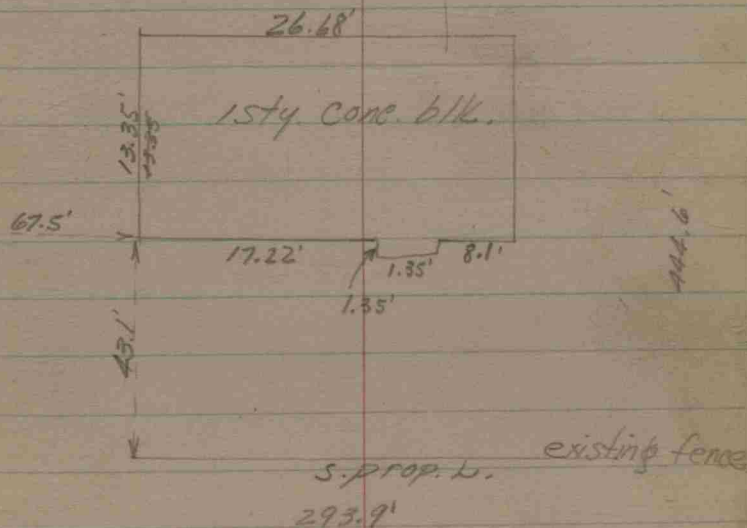
NA

stones:

1. Cen SW 29-16-1E
p.p. N20E 20.4'
Cm. en. p. S45W 21.65'
wood " " N45W 29.2'
" " " E 15.65'
4" below ground.

2. Cen. SNW 32-16-1E
p.p. N30W 24.18'
p.p. N5E 25.15'
" S80W 15.3'

iron en. p. S45E 25.6'
12" below ground



J. Graham 7.50
Total - 25.00