

TABLE XIII—CORRECTIONS FOR TANGENTS AND EXTERNALS

These corrections are to be added to the approximate values, found by dividing the tangent, or external, for a 1° curve (Table VIII) by the degree of curve, in order to obtain the true tangents, or externals. Intermediate values may be obtained by interpolation.

FOR TANGENTS ADD

Central Angle	DEGREE OF CURVE															
	5°	10°	15°	20°	25°	30°	35°	40°	45°	50°	55°	60°	65°	70°		
10°	.03	.06	.09	.13	.16	.19	.22	.25	.28	.31	.34	.38	.42	.46		
15°	.04	.10	.14	.19	.24	.29	.34	.39	.45	.51	.53	.58	.63	.68		
20°	.06	.13	.19	.26	.32	.39	.45	.51	.58	.65	.72	.79	.84	.90		
25°	.08	.16	.24	.33	.40	.49	.58	.67	.75	.83	.90	.99	1.06	1.14		
30°	.10	.19	.29	.39	.49	.59	.69	.79	.89	.99	1.09	1.20	1.29	1.39		
35°	.11	.22	.34	.47	.58	.69	.79	.81	.92	1.04	1.29	1.42	1.54	1.66		
40°	.13	.26	.40	.53	.67	.80	.93	1.06	1.20	1.34	1.49	1.64	1.79	1.94		
45°	.15	.30	.44	.60	.76	.91	1.06	1.21	1.37	1.52	1.70	1.87	2.04	2.21		
50°	.17	.34	.51	.68	.85	1.02	1.19	1.36	1.54	1.72	1.91	2.10	2.29	2.48		
55°	.19	.38	.57	.76	.95	1.14	1.32	1.52	1.72	1.92	2.14	2.35	2.56	2.77		
60°	.21	.42	.63	.84	1.05	1.27	1.49	1.71	1.94	2.17	2.38	2.60	2.83	3.07		
65°	.23	.46	.69	.93	1.16	1.40	1.64	1.88	2.13	2.38	2.63	2.88	3.13	3.39		
70°	.25	.51	.76	1.02	1.28	1.54	1.80	2.06	2.33	2.60	2.88	3.16	3.44	3.72		
75°	.27	.56	.83	1.12	1.40	1.69	1.98	2.27	2.57	2.87	3.16	3.47	3.78	4.09		
80°	.30	.61	.91	1.22	1.53	1.84	2.15	2.46	2.78	3.10	3.44	3.78	4.12	4.46		
85°	.33	.66	1.00	1.33	1.68	2.02	2.36	2.70	3.05	3.40	3.77	4.14	4.55	4.89		
90°	.36	.72	1.09	1.45	1.83	2.20	2.57	2.94	3.32	3.70	4.10	4.50	4.91	5.32		
95°	.39	.79	1.19	1.55	2.00	2.40	2.80	3.20	3.61	4.02	4.40	4.98	5.38	5.83		
100°	.43	.86	1.30	1.74	2.18	2.62	3.06	3.50	3.95	4.40	4.88	5.37	5.85	6.34		
110°	.51	1.03	1.56	2.08	2.61	3.14	3.67	4.21	4.76	5.31	5.86	6.43	7.01	7.60		
120°	.62	1.25	1.93	2.52	3.16	3.81	4.45	5.11	5.77	6.44	7.12	7.80	8.50	9.22		

FOR EXTERNALS ADD

Central Angle	DEGREE OF CURVE															
	5°	10°	15°	20°	25°	30°	35°	40°	45°	50°	55°	60°	65°	70°		
10°	.001	.003	.004	.006	.007	.008	.009	.011	.012	.014	.015	.017	.018	.020		
15°	.003	.007	.010	.014	.018	.023	.027	.029	.032	.035	.039	.043	.047	.051		
20°	.006	.011	.017	.022	.028	.034	.038	.045	.051	.057	.063	.070	.076	.083		
25°	.009	.018	.027	.036	.046	.056	.065	.074	.083	.093	.106	.120	.127	.135		
30°	.013	.025	.038	.051	.065	.078	.090	.103	.116	.129	.149	.170	.179	.188		
35°	.018	.035	.054	.072	.086	.109	.131	.153	.175	.197	.213	.230	.247	.264		
40°	.023	.046	.070	.093	.117	.141	.172	.203	.234	.265	.277	.290	.315	.341		
45°	.030	.060	.093	.119	.153	.184	.216	.254	.289	.325	.351	.378	.411	.445		
50°	.037	.075	.116	.151	.189	.227	.266	.305	.345	.384	.425	.467	.508	.550		
55°	.046	.093	.142	.188	.236	.283	.332	.381	.420	.479	.530	.582	.641	.700		
60°	.056	.112	.168	.225	.283	.340	.398	.457	.516	.575	.636	.697	.774	.851		
65°	.067	.135	.204	.273	.343	.412	.483	.554	.625	.697	.711	.845	.922	1.01		
70°	.080	.159	.240	.321	.403	.485	.568	.652	.735	.819	.906	.994	1.08	1.17		
75°	.095	.182	.266	.353	.440	.528	.616	.704	.792	.877	.977	1.07	1.18	1.29		
80°	.110	.220	.332	.445	.558	.671	.787	.903	1.02	1.13	1.25	1.38	1.50	1.62		
85°	.128	.259	.391	.524	.657	.790	.926	1.06	1.20	1.34	1.47	1.62	1.76	1.91		
90°	.149	.299	.450	.603	.756	.910	1.07	1.22	1.38	1.54	1.70	1.87	2.03	2.20		
95°	.174	.350	.522	.706	.885	1.06	1.25	1.43	1.62	1.80	1.99	2.18	2.38	2.58		
100°	.200	.401	.604	.809	1.01	1.22	1.43	1.64	1.85	2.06	2.28	2.50	2.73	2.96		
110°	.268	.536	.806	1.08	1.35	1.63	1.91	2.20	2.48	2.76	3.05	3.35	3.66	3.96		
120°	.360	.721	1.08	1.45	1.82	2.19	2.57	2.95	3.33	3.72	4.11	4.50	4.91	5.32		

Index

①

Page 4 - John Overman

Pl. NW<sup>4</sup>-NE<sup>4</sup>-20-15-1E

P. 4 Parker

P. 5-7 Bridge #8

12-13 Deep Rock Oil Co

Jan. 11, 1961  
R.W. Armstrong

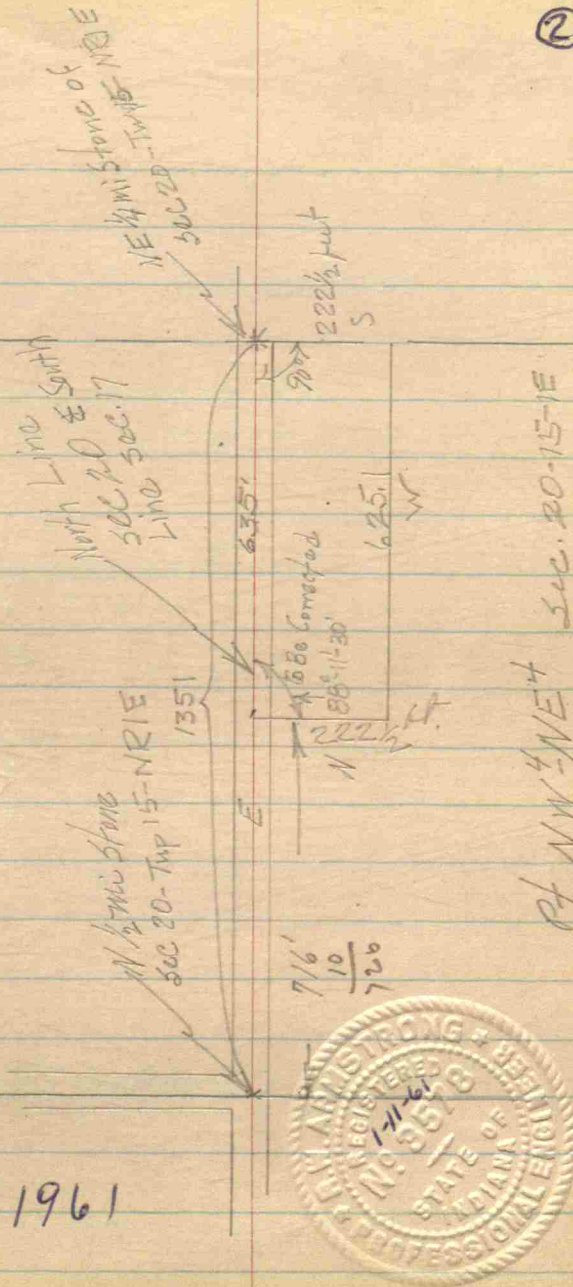
Survey for John Overman  
re: 1  
Darrville Indiana

a tract of land cut  
out of the NW<sup>4</sup> of the  
NE<sup>4</sup> - 20 - 15 - 9E

Ac. when N line is corrected  
to 625.1 ft = 3.19 ±  
R.W.R.

Field work - 3 hr. @ 10<sup>75</sup> = 32.25  
Office work - 3 hr. @ 8<sup>00</sup> = 24.00  
Total = 56.25

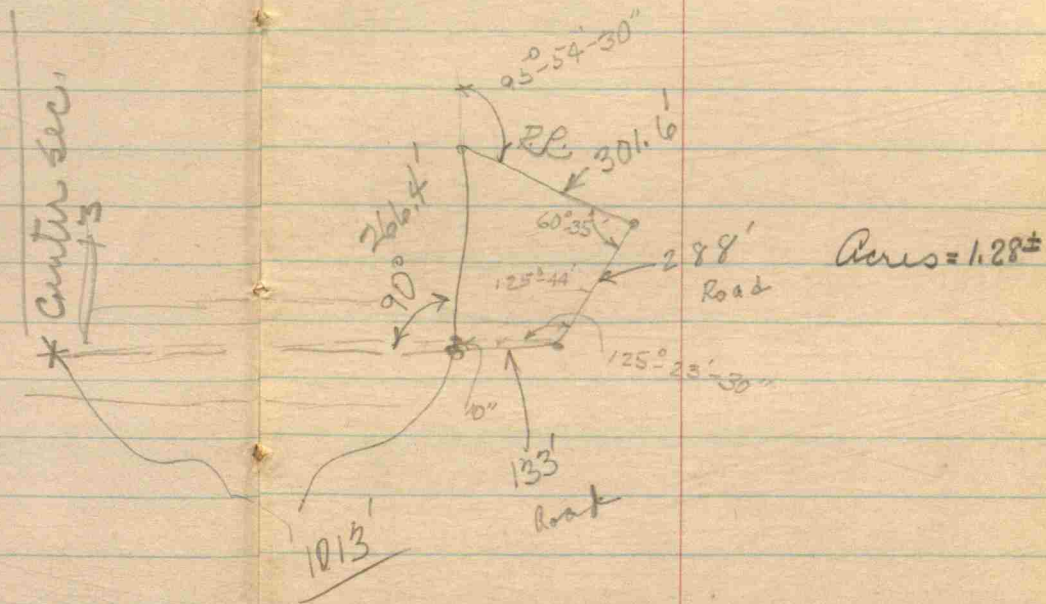
Jan 19, 1961  
RWA



Fred Parker

(3)

STA.	Angle
# 2	$95^{\circ} 59' 30''$ ext. $\angle$
# 3	$60^{\circ} 35'$ int. $\angle$
# 4	$125^{\circ} 44' 14''$
4-sec.	$125^{\circ} 23' 30''$



(4)

Fred Parker

a part of the S<sup>2</sup> of the 4E<sup>4</sup>  
Sec. 13, Twp 16N R. 1W.

start at Center of Sec. 13.

Bridge #80

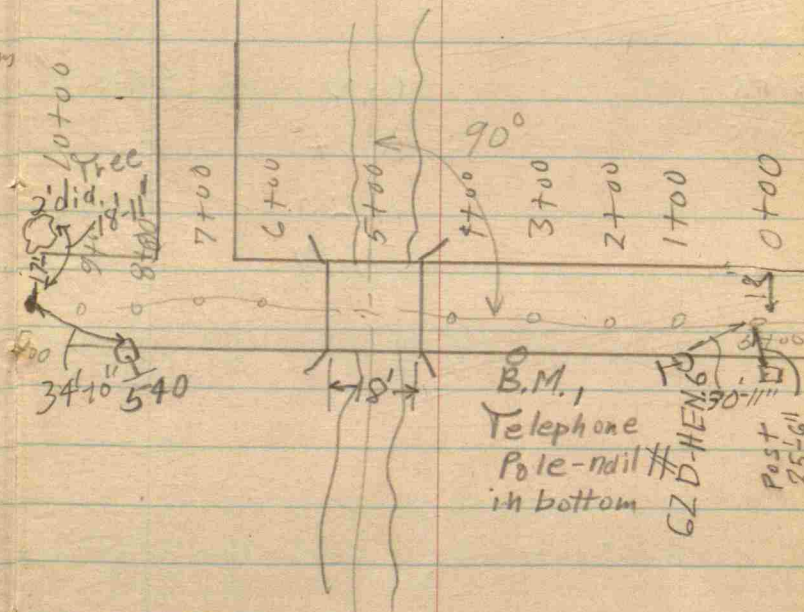
4-4-61

5

Sta. B.S. A.T. F.S. elev. remarks

Sta.	B.S.	A.T.	F.S.	elev.	remarks
0+00				-0.05	
1+00				2.04	
2+00				4.73	
3+00				6.96	
B.M.	8.30	108.30		100.00	
4+00				8.02	
5+00				7.46	
Bridge N. Side S. side				12.22	stream bed
				12.19	"
T.P.	7.07			7.46	100.84
☐ Intersec.				7.39	
6+00				7.65	
7+00				4.04	
8+00				1.64	
9+00				2.18	
10+00				1.33	

☐ of Bridge to  
☐ of N-Road = 43'



Sta.	B.S.	H.I.	F.S.	elev.		Sta.	dis. N fence	dis S fence
1+00			6.52		TOP stake	0+00	18'	18'
			7.24		Bottom stake	1+00	17'-3"	19'-3"
North side			9.31		stream bed	2+00	16'-7"	19'-10"
W. side			8.00		35' from stake	3+00	15'-10"	18'-5"
6' Back						4+00	14'-10"	18'-8"
B.M.	5.21	105.21		100.00		6+00	19'-0"	17'-10"
1+00					stream bed	7+00	18'-2"	17'-4"
South side			6.19		TOP W of stake	8+00	18'-2"	17'-9"
			6.94		Bottom stake	9+00	18'-0"	17'-6"
			11.20		stream bed	10+00	17'-0"	17'-0"
35' from stake			7.87		6' Back other side			

