

LR

A3 11x17 LR A3 11x17

← A3 →

← 11x17 →

Book 173

MINI
DRAWING BOOK

363

TER →



4 W.C. LANGE ROAD

BM #1 - 24" Cotton Wood - 150' East of station 0+00, on North Side of Cox Road - Elev 100

0+0

1+0

1+66 18" Concrete Sewer 98.2

2+0

3+0

4+0

5+0

6+0

7+0

8+0

9+0

10+0 15" Vit. Sewer 96.0

104.60
99.71

W.

E

E.

5

Elev. 103.05
Dist. 100'

101.67

100.50
100'

100.47-99.60-100.87-99.78-100.29-100.00-98.93-100.65-100.75
16 12 7 6 5 10 15 25

100.3 100.1-99.4-100-100.4-100.4-98.8-99.5-99.0
25 17 11 7 5 11 15 25

101.8 102.8-100.6-101.2-101.2 101.7-101.3-101.4-100.5-101.2-101.1
25 17 14 7 5 5 7 11 15 25

104.2 103.4-102-103.4-103.3-103.8-103.4-103.3-102.7-103.8-103
19 15 12 7 5 5 7 11 19 25

104.3-104.2-103-103.9-104.5-104.8-104.3-103.4-103-103.9-103.3-103.2
25 15 12 9 6 5 8 11 15 18 25

103.2-103.3-102.2-102.7-103.3-103.6-103.6-102.6-101.5-103.4-103
25 15 12 9 6 5 8 7 14 25

102-102.3-101.6-101.4-102.7-103-102.8-101.5-101.4-102-102.1
25 20 14 10 5 6 9 13 15 25

102-101.4-100.8-101.4-102.2-102.6-102.4-100.7-101.5-101.9-101.2
25 15 12 8 5 6 11 15 17 25

101.9-101.2-99.8-100.5-100.4-100.9-100.6-100.5-100-100-102-101.5
25 14 11 6 3 5 8 9 12 19 25

97.1 96.5-99.1-99.2-99.3-96-95.8
25 9 5 5 8 25

6

B.M. No 2. EL. 102.76 Rock
A+N.E. Con Garage Stall +40

11+0

12+0

13+0

14+0

15+0

16+0

17+0

18+0

19+0

19+23 20" C.M. Pipe 99.52

20+0

21+0

B.M. #3 Sta 20+37 - Walnut Tree
W. Side Road - EL. 103.95

0104.36

W.

E

E.

7

101.9 -100.8-100.6-101.1-101.3-100.9-100.8-101.3-101.9
25 14 10 5 5 9 15 25

101.5-101.4-100.9-101.4-101.9-101.5-101-101.4-100.8
25 14 10 5 5 10 15 25

102.7 -102.5-101.7-101.7-102.8-103.9-102.4-101.5-102.9-102.6
25 15 13 9 7 8 11 14 25

101.8 -101.4-100.8-101.5-102-101.9-100.3-100.6-100.9-100.7
25 15 12 8 6 10 13 15 25

101.9-101.9-101.1-102.4-102.3-102.3-101.1-102.7-103.3
25 15 11 2 5 10 15 25

103.1-103 -102.4-103.6-103.2-102.3-102.5-103.8-103.6
25 15 5 4 6 10 15 25

103.9-104-103.3-104.6-103.9-103-103.9-104.1-104.1
25 15 12 7 10 12 13 25

103.5 -103.4-102.3-103.3-103-102.5-103.8-103.8
25 14 12 6 12 14 25

101.9-101.9-101.2-101.8-102.3-102.2-100.3-100.7-99.7
25 15 12 9 4 8 12 25

102-102 -101.4-101.6-102.2-102.5-102.3-101.2-101.4-102.6-102.6
25 15 12 9 7 5 7 10 15 25

104.2-104.4-103.8-103-103.7-103.2-103.7-103.8-103.5-103.3-105-105
25 20 15 12 7 5 7 9 11 14-25

8

22+0

23+0

24+0

25+0

26+0

26+50

27+0

28+0

29+0

29+50

30+0

0107.95

W.

E.

E.

9

105.8 -105.9 -105.4 -105.9 -105.6 -104.7 -105.7 -105.7
2.5 11 7 6 10 14 2.5

106.5 -106.5 -105.5 -105.9 -106.5 -106.9 -106.2 -105.7 -106.3 -105.9
2.5 16 12 9 6 6 7 14 2.5

107.7 -107.9 -106.7 -107.8 -107.4 -106.7 -107.3 -106.8
2.5 15 11 6 9 12 2.5

109 -109 -108.1 -107.9 -109.1 -108.5 -107.6 -108.4 -108.1 -107.6
2.5 15 13 10 6 8 12 17 2.5

107.1 -106.5 -107.7 -107.4 -107 -106.7 -107.5 -107.7 -107.3
2.4 8 2 3 6 12 2.5

106.4
33

107.4 -106.7 -106.5 -106.5 -106.9 -106.9
2.5 20 13 7 2.5

N.

S.

105.6 -105.1 -105.5 -106.3 -107 -106.8 -106.8 -105.9 -106.8 -106.3 -106.3
2.5 23 16 11 4 2 7 10 13 2.5

105 -104.8 -105.4 -104.9 -106.2 -106.9 -106.4 -105.7 -105.5 -106.1 -105.9
2.5 18 15 12 7 6 10 14 16 2.5

105.4 -105 -105.8 -105.8 -106.3 -106.5 -106.6 -106.1 -105.5 -106.3 -106.3
2.5 16 13 10 5 4 9 12 16 2.5

105.4 -104.9 -105.3 -105.9 -106.5 -105.8 -105.1 -105.7 -105.7
2.5 11 5 9 15 18 2.5

105.7 -105.6 -105 -105.5 -105.4 -105.9 -
2.5 11 17 2.5 3+

10

① 105.58
 ② 103.35
 ③ 106.85

W.

E

E.

11

30+50

105.6-105-106-104.8-104.6-104.8-105.1-105.6-105-104.5-105.7
 25 7 5 2 3 6 9 14 17 25

31+0

104.3-103.7-104.7-103.7-104.6-105-105.3-104.9-103.7-104.7-104.2-103.6
 25 10 13 10 4 2 8 12 16 20 25

32+0

104.3

104-105-104-104.8-104.8-105.1-105.1-104.6-104-104.9-104.6
 15 13 10 5 2 3 8 11 16 25

33+0

104.8
25

104.6-105.7-104.6-104.7-105.3-105.8-105.7-105-106.2-105.7-105.5
 17 14 11 7 6 8 10 15 20 25

34+0

104.4
25

104.3-105.3-103.3-104-103.8-104.2-104.2-103.8-103.3-104.6-104-104
 18 14 10 5 2 5 8 11 15 20

35+0

102.8-102.8-103-103.1-103.3-103.1-101.6-99.7-100
 25 14 6 2 8 14 19 25

36+0

106-105.8-101.9-103.3-103.6-103-102.1-103.4-103-102.2
 25 18 10 5 8 11 15 21 25

37+0

103.8-99.6-99.5-99.7-100.1-99.7-99.1-102.7-102.8-
 25 12 8 4 6 10 15 23

38+0

95.7-95.2-94.5-95.2-95--95.1-95-95.9-93.2-92.4
 23 14 10 5 3 7 15 19 25

39+0

92.6-92.6-92.7-92.6-92.9-92.7-91.5-90.4-90.6
 13 13 7 2 7 12 15 25

+80

18" C.M. Pipe EL. 89.80

40+0

91-91-91.2-90.5-92.1-92.5-92.2-91.5-91.1-90.1
 25 17 13 10 6 6 10 15 25

12 B.M. #4 Sta 39+40-10"
Maple W. Side Road EL. 93.21

41+0

42+0 Add to All Elevations 2.24

43+0 " " " " 2.29

44+0 " " " " 2.19

45+0 " " " " 2.29

46+0 " " " " 2.29

47+0 " " " " 2.29

+45 Brick Arch EL. Fl. Line - 87.0

48+0 " " " " 2.29 87.29

49+0 " " " " 2.29

50+0 " " " " 2.29

51+0 " " " " 2.24

93.23
100.85 W.
99.35

93.21

E E 13

93 - 93.3 - 93.1 - 93.2 - 93.4 - 93.3 - 91.8 - 92 - 91
25 17 5 3 7 12 14 25

94.3 - 94.3 - 92.3 - 93.1 - 93.2 - 93.3 - 92.9 - 92.2 - 93.3 - 91.3
25 13 10 2 3 9 11 15 25

97.6 - 100 - 95.7 - 96.7 - 96.5 - 96.7 - 96.1 - 95.6 - 97.2 - 97.7 - 96.3
25 14 8 3 2 8 11 15 18 25

101.1 - 101.1 - 99.4 - 100.2 - 100.5 - 100.2 - 100.3 - 99.6 - 100.7 - 100
25 14 7 4 8 10 13 17 25

103 - 103 - 101.4 - 101.7 - 101.7 - 102 - 101.6 - 101 - 102 - 102
25 10 8 4 3 9 13 17 25

100.9 - 100.9 - 99.4 - 99 - 99.6 - 99.8 - 99.5 - 98.6 - 101.4 - 101.4
25 12 10 7 5 7 13 17 25

97.6 - 99.6 - 96.3 - 96.6 - 96.7 - 96.7 - 95.5 - 97.6 - 95.7
25 14 6 3 7 13 17 25
94.9

92.1 - 92.3 - 92.1 - 94.2 - 94.3 - 94.4 - 94.3 - 92.4 - 92.4 - 91.4
25 15 12 3 3 8 14 17 25

93.6 - 93.6 - 93.2 - 94.1 - 94.7 - 95 - 94.5 - 93.6 - 94.5 - 94.5
25 15 12 8 6 7 11 16 25

97.2 - 97.2 - 96.2 - 96.7 - 96.6 - 97 - 96.7 - 96 - 97.3 - 98 - 98
25 15 12 8 5 6 10 13 17 25

99.4 - 99.4 - 98.2 - 98.7 - 98.5 - 98.9 - 98.7 - 97.8 - 99.7 - 99.7
25 15 12 7 5 6 11 16 25

14

© 100.00

W.

E

E.

15

52+0	Add to All Elevations	2.24
53+0	" " " "	2.24
54+0	" " " "	2.34
55+0	" " " "	2.24
56+0	" " " "	2.34
57+0	" " " "	2.24
58+0	" " " "	2.24
59+0	" " " "	2.14
60+0	" " " "	2.25
61+0	" " " "	2.35

100.1 - 100.1 - 99.2 - 99.7 - 100.1 - 100.30 - 100.2 - 99 - 100.5 - 100.5
25 15 12 10 6 6 10 16 25

100.7 - 100.7 - 100 - 100.8 - 101.4 - 101.1 - 100.1 - 101.6 - 101.6
25 15 12 8 5 12 16 25

102.6 - 102.6 - 101.6 - 102.2 - 102 - 102.4 - 102.1 - 101.5 - 103 - 103
25 13 11 7 5 7 12 16 25

104 - 104 - 103.7 - 103.5 - 103.6 - 103 - 104 - 104
25 16 7 9 12 16 25

103.9 - 103.7 - 103.6 - 102.9 - 103.30 103.30
25 15 7 5 25

N. S.
103.2 - 102.1 - 101.9 - 102.4 - 102.1 - 102.3 - 102.3
24 20 16 9 8 25

101.7 - 101.7 - 100.8 - 101 - 101.5 - 101 - 100.9 - 100.5 - 100.5
25 18 14 8 5 8 12 25

100.4 - 100.4 - 99.5 - 100 - 100.8 - 100.3 - 99.7 - 100.4 - 100.4
25 16 13 7 7 12 16 25

99.4 100.4 - 98.5 - 98.9 - 99.4 - 98.9 - 98.3 - 99.3 - 99.3
25 17 12 7 7 12 15 25

98.8 98.8 - 97.2 - 97.4 - 98.1 - 97.6 - 97.7 - 97 - 97.6 - 97.6
25 18 13 10 6 9 13 16 25

B.M. # 5 N.E. Wing Wall
 Bridge Sta 62+40 EL. 97.06

62+0	Add to all Elevations	2.25
+20	EL. 96.66 ^{Sid of} Bridge	F. Line EL. 91.00
63+0	" " "	2.35 ^{1.25} _{98.97} _{93.25}
64+0	" " "	2.35
65+0	" " "	2.25
66+0	" " "	2.25
67+0	" " "	2.26
68+0	" " "	2.16
69+0	" " "	2.16
70+0	" " "	2.26
71+0	" " "	2.26
72+0	" " "	2.26

92.8 - 94.8 - 93.4 - 97 - 97.1 - 97 - 94.5 - 94
 25 18 12 7 7 17 25

93.5 - 93.5 - 93.5 - 95.5 - 95.6 - 95.6 - 92.7 - 93.8 - 93.1
 25 18 14 8 6 13 17 25

94.4 94.1 - 95.1 - 96 - 95.5 - 93.5 - 94.7 - 94.7
 25 15 9 7 12 16 25

97 - 97 - 77.3 - 98 - 98 - 97.8 - 98.6 - 98.4 - 99.2 - 99.2
 25 18 14 11 5 8 12 15 25

101.1 - 101.1 - 99.8 - 100.5 - 100.4 - 100.2 - 99 - 100.8 - 100.8
 25 17 14 5 7 11 15 25

102.4 - 102.4 - 101.5 - 102.1 - 102.1 - 102 - 100.1 - 102.3 - 102.3
 25 18 15 5 6 11 16 25

101.8 - 101.8 - 101.3 - 101.8 - 102.2 - 102.2 - 102 - 100.9 - 101.1 - 101.1
 25 18 15 12 5 6 11 15 25

102.7 - 102.7 - 102.1 - 102.9 - 102.6 - 102.3 - 101.1 - 102.1 - 102.8 - 102.8
 25 17 14 4 6 9 12 16 25

103.103 - 102.6 - 102.5 - 103.2 - 103.1 - 102.6 - 101.5 - 102.5 - 102.5
 25 17 15 9 4 7 10 14 25

103.3 103.3 - 102.8 - 103.2 - 102.8 - 101.5 - 102.7 - 102
 25 17 15 6 10 15 25

103.2 - 103.2 - 103.2 - 102.9 - 102.2 - 102.9 - 102.9
 25 17 8 10 17 25

18 #6

B.M. Sta 78+0 - 30" Oak 110'S,
Of Road EL. 103.20

73+0. Add to All Elevations 2.26

74+0 " " " " 2.26

75+0 " " " " 2.26

76+0 " " " " 2.26

77+0 " " " " 2.26

78+0 " " " " 2.07

79+0 " " " " 2.27

80+0 " " " " 2.27

81+0 " " " " 2.27

82+0 " " " " 2.27

83+0 " " " " 2.32

S. Rail of R.R. Track

N. " " " " "

©103.33
©104.60

N.

E

S.

19

103.4 - 103.4 - 102.7 - 103.4 - 103 - 102.1 - 102.9 - 102.9
25 17 13 7 12 17 25

102.8 - 102.8 - 102.4 - 103 - 103.4 - 102.9 - 102.1 - 102.6 - 102.6
25 17 13 11 6 9 16 25

103 - 103 - 102.4 - 103.4 - 103.4 - 103.1 - 102.1 - 102.6 - 102.6
25 17 13 5 5 9 12 25

103.2 - 103.2 - 102.6 - 103 - 103.5 - 103.4 - 103.3 - 102.3 - 103.2 - 103.2
25 17 14 12 5 5 9 12 25

103 - 103 - 102.4 - 103 - 103.4 - 103.3 - 102.9 - 102.6 - 102.9 - 102.9
25 17 15 12 5 6 10 17 25

103.2 - 103.2 - 103.1 - 103.5 - 103.2 - 103.2
25 5 12 20 25

W.

E

103.1 103.1 - 102.8 - 103.6 - 104.1 - 103.9 - 102.7 - 103.1
25 13 9 5 10 16 25

103.6 103.6 - 103.2 - 104 - 104.4 - 104.2 - 103.2 - 104 - 104
25 16 12 8 7 12 19 25

104.6 - 104.6 - 104.2 - 104.6 - 105.1 - 104.6 - 103.9 - 104.8 - 104.8
25 12 11 9 9 12 18 25

104.5 - 104.5 - 104.2 - 105 - 105.5 - 104.9 - 104 - 105.1 - 105.1
25 15 11 8 9 12 17 25

104.8 - 104.8 - 104 - 106.1 - 106.3 - 106.6 - 106.4 - 106.4
25 16 12 6 11 15 25

107.53

107.53

20

B.M. #7 W. Cor of S. Foundation
Post of S. Tower E.L. 106.63

83+50 Add to All Elevations 2.32
S. Rail of Traction

N. " " "

84+0 " " " 2.32

85+0 " " " 2.22

86+0 " " " 2.22

87+0 " " " 2.22

88+0 " " " 2.32

89+0 " " " 2.32

+20.8 2.23

0104.99

W.

E

E

21

104.1 - 104 - 106.5 - 106.5 - 106.5 - 105.2 - 104.6
22 10 4 8 13 22

107.03

107.05

104.5 - 104.1 - 105.4 - 105.5 - 105.3 - 104.4 - 104.7
22 11 4 9 12 22

104.4 - 104.4 - 103.6 - 104.7 - 105.2 - 104.8 - 104 - 104.6 - 104.6
25 16 13 6 8 11 15 25

104 - 103.8 - 104.6 - 104.9 - 104.6 - 103.9 - 104.4 - 103.4
16 14 7 8 11 14 25

104 - 104 - 103.6 - 104.5 - 104.9 - 104.5 - 103.8 - 104 - 104
16 16 13 8 7 11 15 25

104.6 - 104.6 - 103.6 - 104.6 - 105 - 104.8 - 104.5 - 105 - 105
25 16 13 5 7 11 15 25

104.6

104.6

104.6

105.74

24

14+00

13+00

11+00

10+00 14'-Long
15" vit Tile - 1/2 Can be used - Body washed + out of line

7+00

6+00

5+00

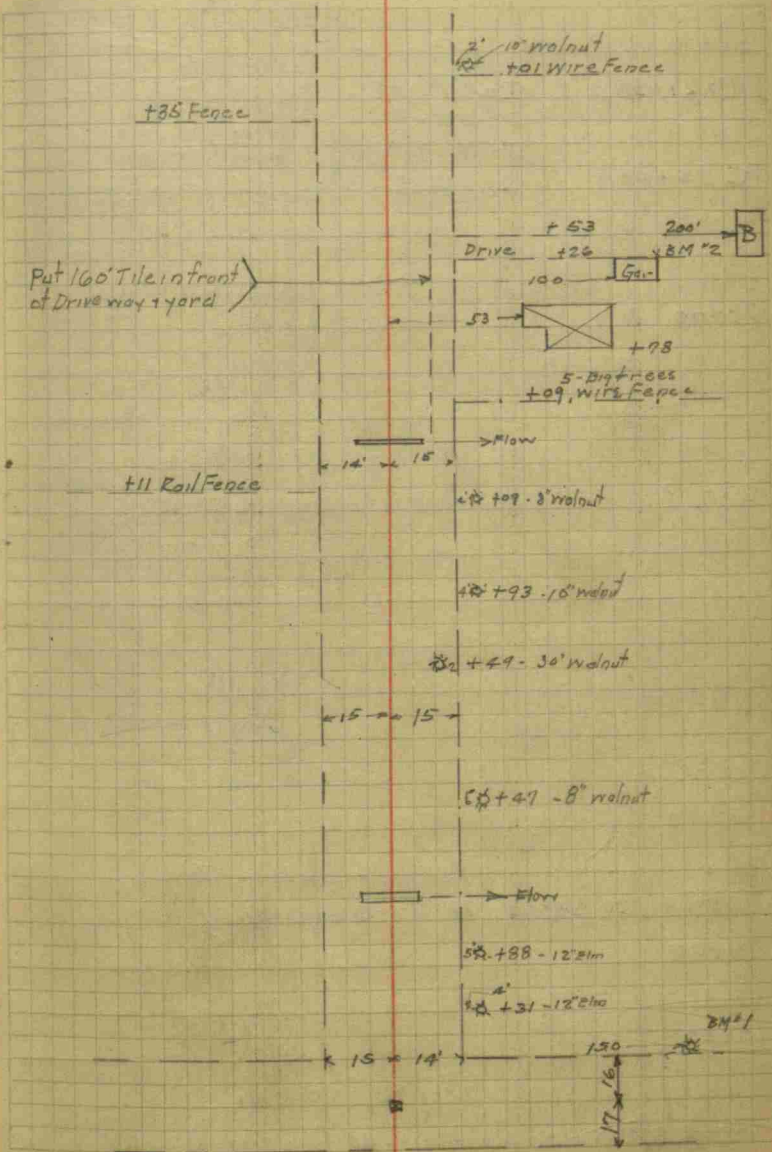
4+00

1+68 18" Conc Sewer Coupled - 14' Long

0+00 Stone

W. C. Lange Road

25



PT = 27+38.3
 I = 89° 40'
 D = 50'-0"
 T = 111.97'
 PC 25+58.5
 L = 179.33

23+00

22+00 Probably need Tile from fence N. of house

20+00

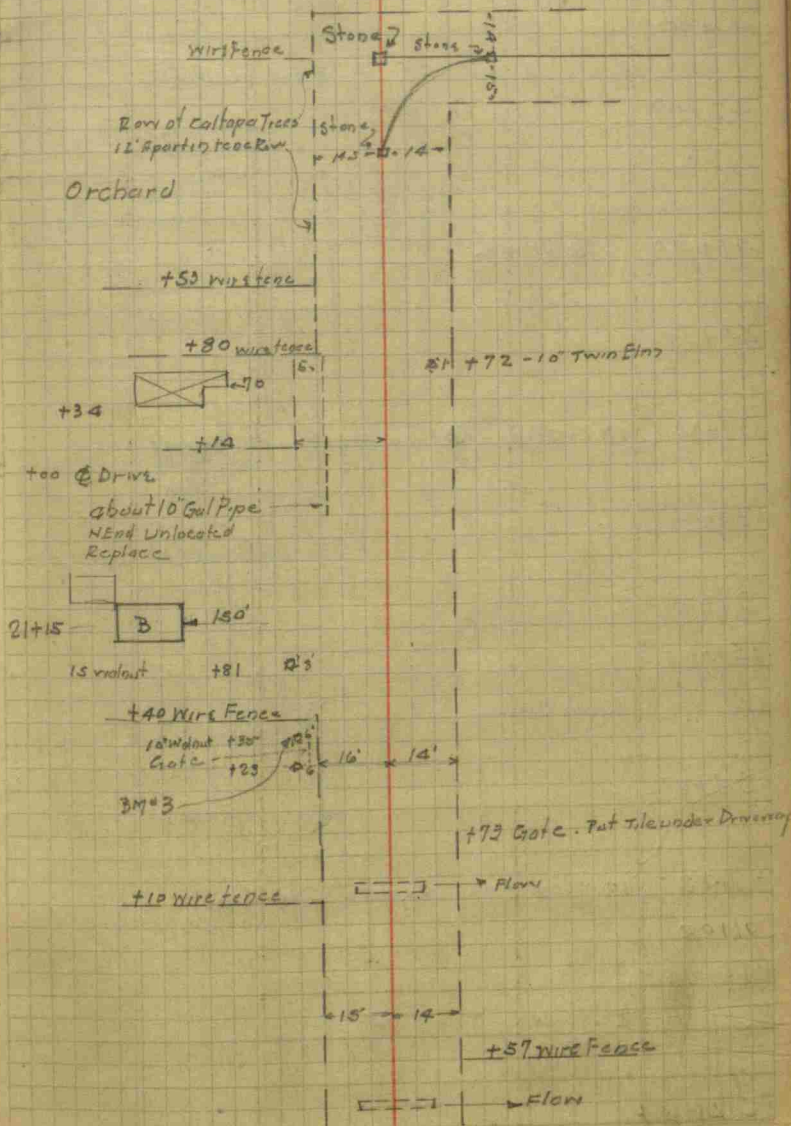
+24 Replace with 4x3 conc Box
 20" CMP pipe - 2d. Long Good Cond. also

19+00

15+00

7d 20" Pipe at sta 19+24

14+46 Put in New series - 40' Across Drainage Area



28

43+00

42+00

41+00 ϕ Drive

40+00

39+80 -18" CM Pipe - 14' Long Fair Condition Replace 4x3 Box

38+00

37+00

35+00

watch Gateway for Tile

34+00

+52 10" Metal Pipe Replace - 14' Long

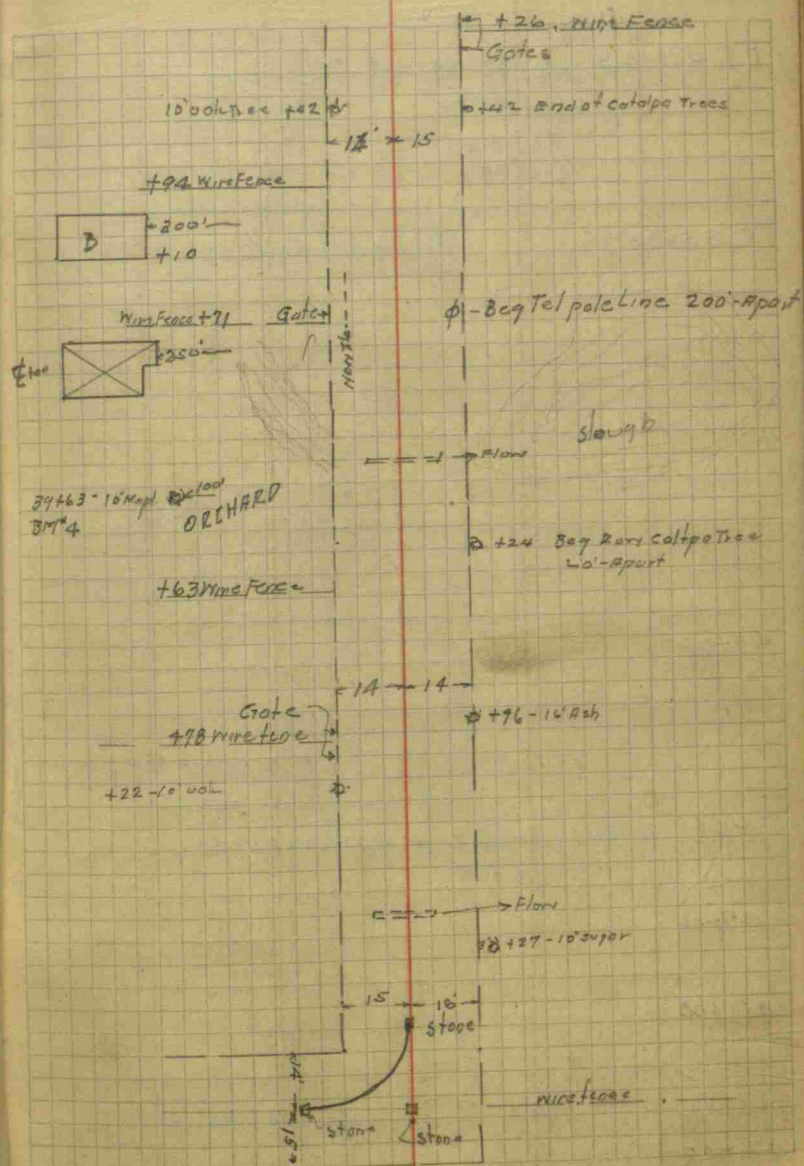
31+00

PT 30+95.3

I = 90.28 T = 115.54
 D = 50.00
 L = 180.93

PC 29+14.4

29



30

P.T. 57+14.5 I = 89°-24'
D = 50'-0"
T = 113.4
L = 178.8

PC 55+35.7 Run water South on West side
at curve

49+00

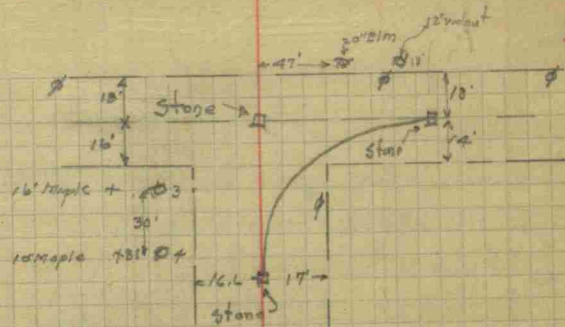
+46 old 10' Brick Arch Replace with same Bridge
on Stumate Road

47+00

46+00

44+00

31



15.5' 17'

+71 Wire Fence



Flow

+96 Last tree of 20
Row of Maples

+73 Big Row Maple 26 ft

+58 Apple

+16 30' Ash

74+00

69+00

68+00

67+00 Deflect 0°-5" Left

66+00

65+00

64+00

62+18 Φ -14' Flat Top 20' Rdwy Newok

1

62+00

61+00

59+00

58+00

74+13-18 0/3

93+09 0/3 Walnut 0/3

+31' 10" 5/20000

34 2/4 0/3 -12 -18 = 97+92

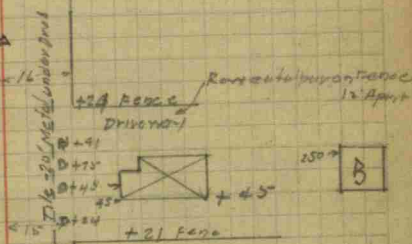
100-12 Walnut 0/3

75-12 Walnut 0/3

+90 10 Walnut 0/3

+60-10 Walnut 0/3

+00-10 Walnut - 0/3 18 -16



+42 wire fence



+17 -16

Orchard

+15 wire fence Gate

+58 wire 0/3

+36 Row catpaw trees

+10 -

+16-10 Walnut 0/3

+64-18 5/17

85+00

84+00

82+00

81+00

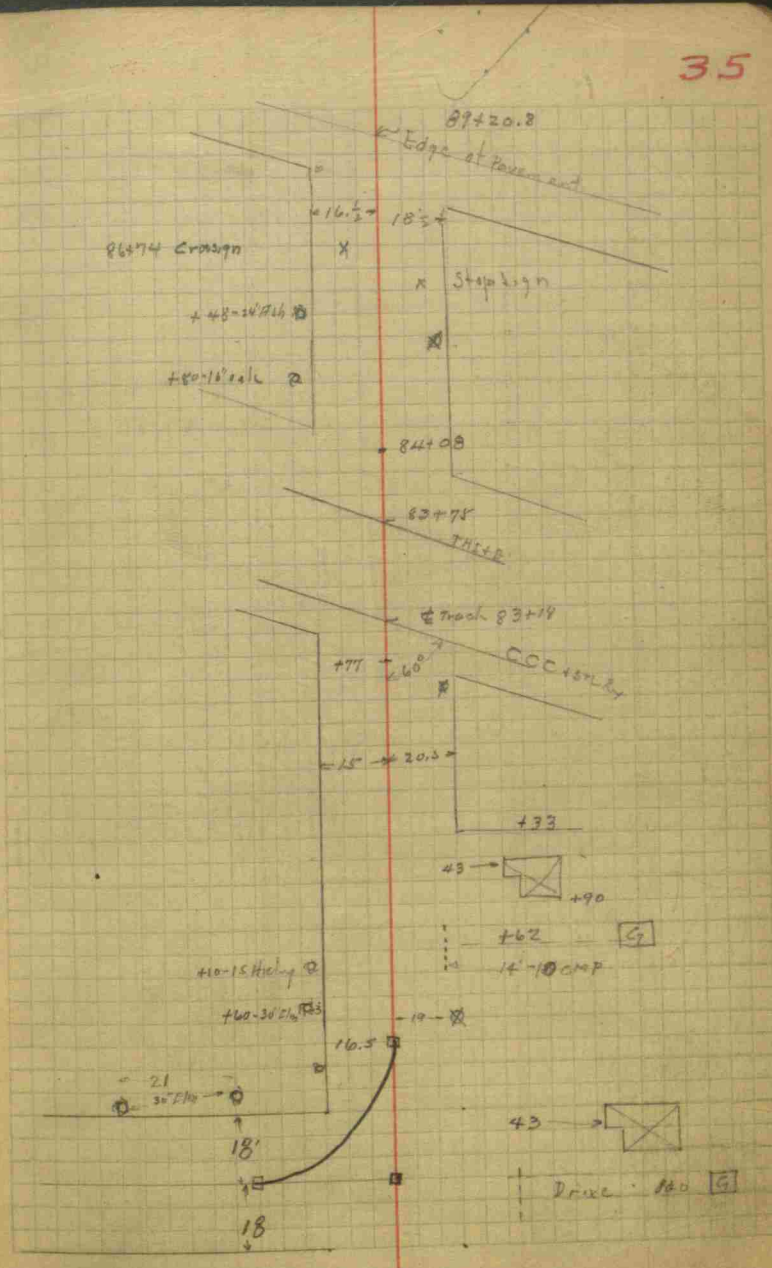
80+00

P.T. 79+23.5

I = 90°-30 T = 115.6

D = 50'-0 L = 181

PC 77+42.5



38

	IS	HI	FS	
BM#1				100
π.	9.42	109.42		
0+00			7.7	101.72
1+0			9.05	100.37
2+0			8.94	100.48
3+0			7.70	101.72
4+0			5.74	103.68
5+0			4.63	104.79
6+0			5.80	103.62
7+0			6.50	102.92
8+0			6.80	102.62
9+0			8.60	100.82
10+0			10.20	99.72
11+0			8.20	101.22
⊙			6.60	102.82
π.	4.31	107.13		
BM#2			4.40	102.73
12+0			5.2	101.93
13+0			4.2	102.93
14+0			5.2	101.93
15+0			4.8	102.33
16+0			3.6	103.53
17+0			2.50	104.63
18+0			3.80	103.33
⊙			4.82	102.31

39

40

\bar{A}_s	9.43	111.74		102.31
19+0			9.40	102.34
20+0			9.20	102.54
BM ³			7.78	103.96
21+00			7.50	104.24
22+0			5.80	105.94
23+0			4.90	106.84
24+0			3.90	107.84
25+0			2.60	109.14
26+0			4.70	107.04
⊙			4.95	106.79
\bar{A}_4	4.20	110.99		
27+0			4.10	106.89
28+0			4.10	106.89
29+0			4.30	106.69
30+0			5.10	105.89
31+0			5.80	105.19
32+0			5.80	105.19
33+0			5.10	105.89
34+0			6.60	104.39
⊙			7.25	103.74
\bar{A}_5	0.33	104.07		
35+0			0.70	103.37
36+0			0.40	103.67
37+0			3.90	100.17

41

42	B.S.	H.I.	F.S.
38+0			8.90 95.17
39+0			11.20 92.87
40+0			11.50 92.57
⊙			11.43 92.64
π ₆	5.80	98.44	
BM*4			5.17 93.27
41+0			5.10 93.34
42+0			3.00 95.44
⊙			0.20 98.24
π ₇	9.75	107.99	
43+0			9.20 98.79
44+0			5.30 102.69
45+0			4.00 103.99
46+0			5.90 102.09
47+0			9.10 98.89
48+0			11.40 96.59
49+0			10.70 97.29
50+0			8.70 99.29
⊙			9.05 98.94
π ₈	12.20	111.14	
51+0			10.00 101.14
52+0			8.60 102.54
53+0			7.50 103.64
54+0			6.40 104.74
55+0			5.20 105.94

44

	B.S	H.I.	F.S.	
56+0			5.50	105.64
57+0			6.80	104.34
58+0			7.40	103.74
59+0			8.20	102.94
⊙			8.67	102.47
Σ ₉	1.38	103.85		
60+0			2.20	101.65
61+0			3.40	100.45
62+0			4.50	99.35
B.M #5			4.52	99.33
63+0			5.90	97.95
64+0			5.50	98.35
65+0			3.60	100.25
66+0			1.20	102.65
			7.58	96.27
⊙			1.70	102.15
Σ ₁₀	8.61	110.76		
67+0			6.40	104.36
68+0			6.40	104.36
69+0			6.00	104.76
70+0			5.40	105.36
71+0			5.30	105.46
72+0			5.30	105.46
73+0			5.10	105.66
74+0			5.10	105.66

45

Flow Line 6" Tile W. Side Banges yard

46	B.S.	H.I.	F.S.	
75+0		110.76	5.10	105.66
76+0			5.10	105.66
77+0			5.20	105.56
⊙			5.00	105.76
Λ ₁₁	4.71	110.47		
B.M.			5.03	105.44
78+0			5.20	105.27
79+0			4.10	106.37
80+0			3.80	106.67
81+0			3.10	107.37
82+0			2.70	107.77
⊙			2.65	107.82
Λ ₁₂	5.50	113.32		
83+0			4.70	108.62
			3.55	109.77
			3.55	109.77
			4.05	109.27
			4.03	109.29
84+0			5.50	107.82
85+0			5.90	107.42
86+0			6.20	107.12
87+0			6.20	107.12
88+0			6.00	107.32
89+0			5.50	107.82
89+			5.35	107.97
B.M.#7			4.46	108.86

48

Estimate

7000 Cu Yds Grading @ 32¢	2140.00
46'-24" CM Pipe @ 290	133.40
92'-18" CM Pipe @ 206	189.52
26'-12" CM Pipe @ 156	40.56
28'-10" CM Pipe @ 143	40.04
100'-15" vit T. l. e @ 115	115.00
Relay 16'-18" CM Pipe @ 50¢	8.00
" 16'-15" vit @ 50	8.00
150,44 Cu Yds Conc @ 13¢	1955.72
6746# Reinf steel @ 5¢	337.30
3304 Cu Yds Gravel @ 17¢	5882.00

10849.54

1835.00

12684.54

Costs

Viewers	15.00
Bonds	10.00
Transcript	35.00
Advertising	125.00
Attorney	50.00
Inspector 18 hrs @ 4.70	84.60
Exp	650.00
Contingency	500.00
	<u>1835.00</u>

12685.00

49

50 RELOCATION AT POPP'S FARM ON LEBANON ROAD

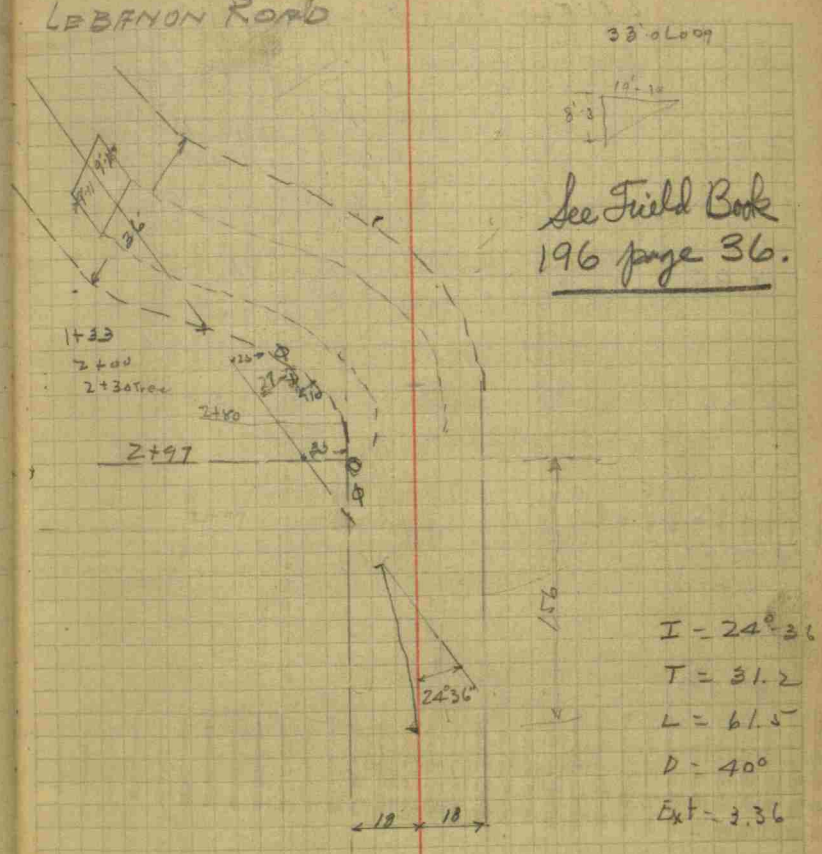
0+00 N. End of Bridge

3+99 PC

4+60.5 PT

2-29-31

51



See Field Book
196 page 36.

52

LEVELS POPE RELOCATION

BM 3.76 103.76 100

0+00

1+00

2+00

3+00

4+00

4+60.5

53

TYPENWING

W	18	8	7	8	11	16	E
	5.7	4.5	4.08	4.3	4.6	8.2	
	98.0	99.2	99.68	99.4	99.1	98.5	✓

20	12	5.31	6	8	12	20
6.3	5.3		6.0	6.8	5.8	5.4
97.4	98.4	98.45	98.76	96.9	97.9	98.3

26	5	25
5.0		4.6
98.76	98.76	99.1

25	4.9	25
5.3		4.5
98.4	98.86	99.2

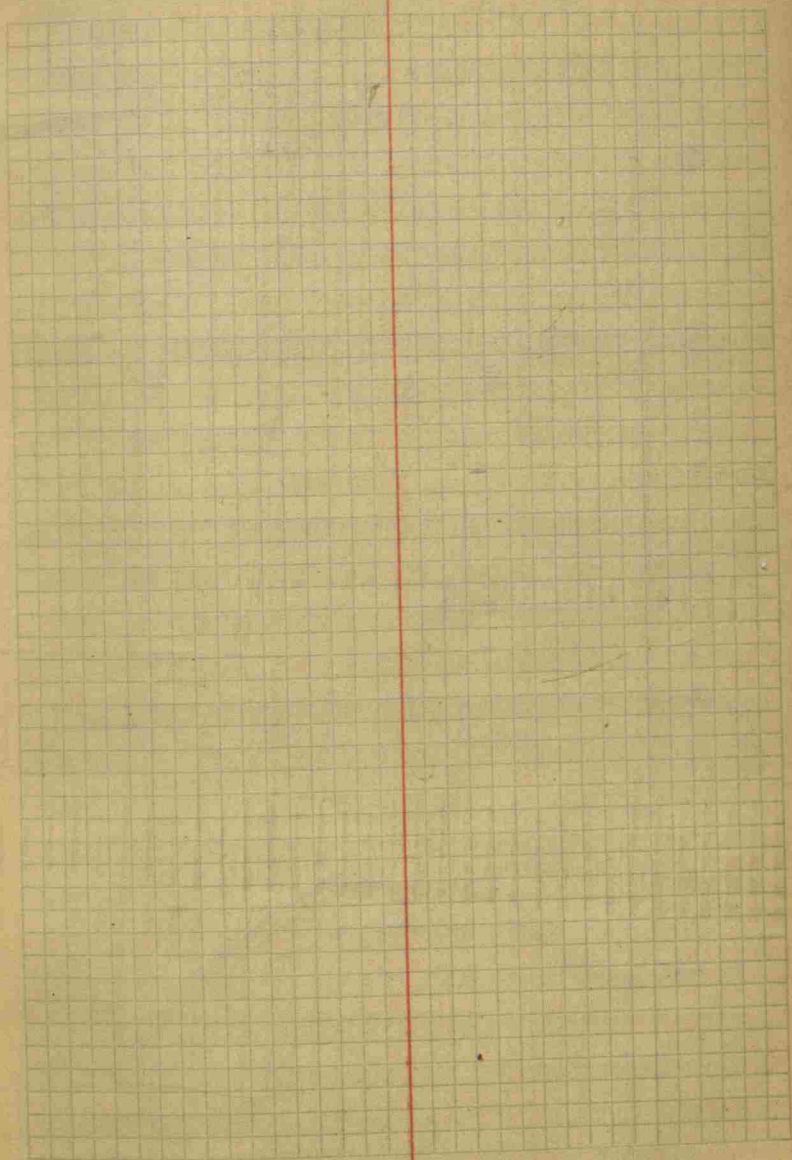
25	15	11	0.0	2	6	25
4.7	4.3	4.3	98.76	6.2	4.3	4.2
99.	99.4	99.4		97.5	98.9	99.5

16	10	9	9	10	19
4.7	3.8	4.1	3.8	4.0	4.6
99.0	99.9	99.6	99.96	99.0	99.7

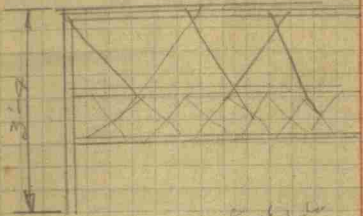
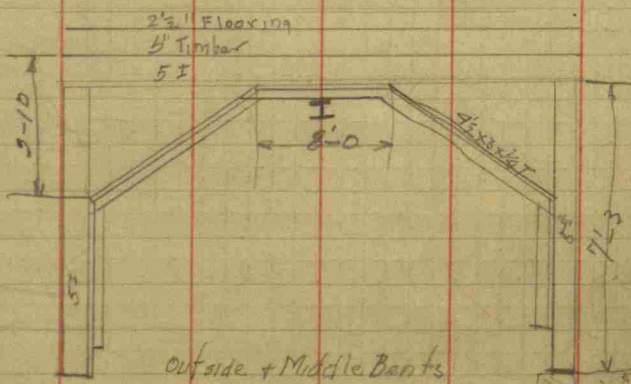
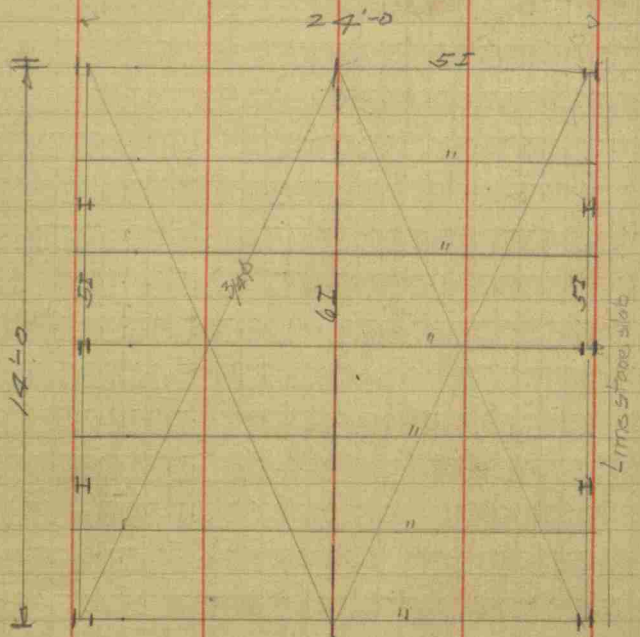
54

NE Corner Sec 32 T16 2W
Span 12'-6" N Hand Rail off
Rise 5'-0" SE Footing washed out
S Hand Rail & floor put in slab

55



CLAY BRIDGE



3-8-section bridge

82

LEVELS ON BOYD DITCH + COOPER DITCH
 Beginning N.E. of Boyd Ditch at Road Line
 BOYD

Sta	BS	HI	FS	Elev
BM	1.35	101.35		100
0+00			5.12	96.23
1+00			5.57	95.78
2+00			5.91	95.44
3+00			6.22	95.13
4+00			6.33	95.02
5+00			6.62	94.73
⊙			6.08	95.27x
π	3.80	99.07		
6+00			4.65	94.42
7+00			4.85	94.22
8+00			5.01	94.06
9+00			5.26	93.81
10+00			5.61	93.46
11+00			5.80	93.27
⊙			4.29	94.78x
π	1.99	96.77		
12+00			3.76	93.01
13+00			3.94	92.83
14+00			4.06	92.71
15+00			4.35	92.42
16+00			4.75	92.02

83

Top footing SW Corner East Abutment of Bridge at Road

84

sta	BS	HI	FS	
		96.77		
⊙			4.23	92.54
⊖	4.31	96.85		
17+00			4.96	91.89
18+00			5.02	91.83
19+00			5.29	91.56
20+00			5.50	91.35
21+00			5.71	91.14
22+00			5.96	90.89
⊙			5.02	91.83
⊖	10.61	102.44		
0+25			4.19	98.25
0+50			1.59	100.85
1+00			5.55	96.89
2+00			5.91	96.53
3+00			5.96	96.48
⊙			3.59	98.85
⊖	3.83	102.68		
4+00			6.47	96.21
5+00			7.26	95.42
6+00			7.09	95.59
7+00			7.45	95.23
8+00			7.05	95.63
⊙			4.32	98.26
⊖	5.15	103.51		

85

Intersection Cooper Ditch = 0+00 going North on
Cooper Ditch

Top Bank Ditch

Top Spill Bank

86

Sta	BS	HT	FS		
		103.51			
9+00			7.58	95.93	
10+00			6.97	96.54	
11+00			6.86	96.65	
12+00			6.80	96.71	
13+00			6.61	96.90	
14+00			6.10	97.41	
⊙			4.39	99.12	
π	5.95	105.07			
15+00			7.32	99.75	
16+00			6.89	98.18	
17+00			6.85	98.22	
18+00			6.51	98.56	
19+00			5.98	99.09	
20+00			4.63	100.44	
+06			5.68	99.39	FL Pipe at Road
+18:			1.87	103.20	⊘ Road
BM			5.10	99.97	100.00
At this point turned + went back to mouth of Cooper ditch					
		105.07			
⊙			4.77	100.30	
π	3.22	103.52			
⊙			4.75	98.77	
π	3.87	102.64			

87

96.33

91.83

4.00

90.30

90.89

8.50

95.72

90.89

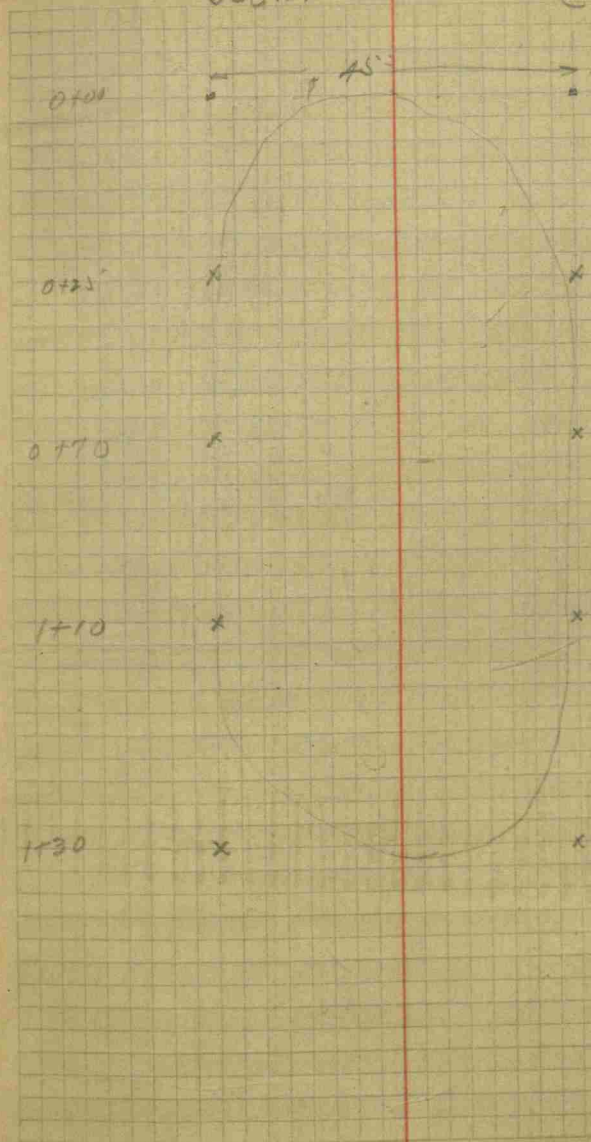
4.83

88

		102.64		
⊙			3.88	78.76
π	2.85	101.61		
			5.89	75.72
			6.40	74.21
			5.00	76.61
			5.50	76.11
			4.10	77.57
			5.18	

Sodler Gravel Pile (rest)

89



90

BM	IS	HI	FS	
	9.12	109.12		100

0+25

0+70

1+10

1+30

⊙

⊙			96	108.16
---	--	--	----	--------

⊙	10.84	119.00		
---	-------	--------	--	--

0+25

0+70

1+10

1+30

⊙

⊙			10.39	108.61
---	--	--	-------	--------

⊙	2.49	111.10		
---	------	--------	--	--

0+25

0+70

1+10

91

New station of 2nd

5	12	15
9.42	3.8	1.3
99.70	105.32	107.82

3	12	15
9.32	3.35	1.7
99.60	105.57	107.42

3	12	15
9.5	2.75	1.8
99.62	106.37	108.32

9	17	
9.1	4.8	
100.02	104.32	

24	32	
5.6	11.85	
113.9	108.15	

22	28	38
6.9	2.2	1.9
112.1	114.7	108.08

24	29	31	40
4.8	1.9	1.9	8.6
113.2	117.1	117.1	111.9

26	
10.6	
108.4	

44	
11.2	
99.88	

50	
11.05	
100.05	

54	
11.5	
99.6	

92

111.10

1+30

0+00 - going west from area on top

93

28	45	50
575	725	11.85
105.35	101.95	99.25

17	10	5	5	0
2	2.7	6.7	7.7	11.6
109.10	105.4	104.9	103.4	99.5

94

JADLER'S Gravel Pile East Side

	BS	HI	FS	Elm
0+00	Wend			
0+12				
0+39				
0+57				
0+69				
0+83				
1+01				
1+25				
1+44	BS	HI	FS	Elm
BM	7.72	107.72		100
0+00				
0+12				
0+39				
0+57				
0+69				
0+83				
1+01				

95

Stake	3	12
8.22	7.6	2.25
99.48	100.13	105.38

Stake	3	12
8.2	7.8	1.4
99.53	99.93	106.33

Stake	12
9.0	1.2
98.43	106.53

Stake	4	12
9.0	8.7	3.3
98.73	99.03	104.23

Stake	2	12
9.1	8.6	2.1
98.63	99.13	105.63

Stake	2	12
8.4	8.2	2.5
99.13	99.53	105.23

Stake	3	12
7.4	7.2	1.4
100.33	100.53	106.33

96

	BS	HI	FS	El-v
1+25		107.73		
0			.54	107.19
K	9.17	116.36		
0+00				
0+12				
0+39				
0+57				
0+69				
0+83				
1+01				
1+25				
0			11.89	104.47
K	.22	104.69		
0+00				
0+12				
0+39				

97

Gate	1	2	3	4	5
8.5	2.4	.2			
99.23	99.33	107.53			
20	31				
7.9	10.9				
108.46	106.66				
22	23	35			
1.9	1.9	8.2			
114.46	114.46	109.86			
16	20	24	25	32	
7.6	6.6	4.2	4.2	11.2	
108.76	109.76	112.16	112.16	106.16	
22	23	25	34		
6.1	4.4	4.4	8.9		
110.26	111.76	111.6	109.96		
16	21	24	27	35	
8.0	5.6	2.6	2.6	8.0	
108.36	110.76	113.76	113.76	108.36	
18	22	25	32		
7.2	5.4	5.4	9.7		
109.16	110.96	110.96	106.66		
15	19	22	25	33	
7.9	6.1	3.3	3.3	10.4	
108.96	110.26	113.06	113.06	105.96	
20	22	31			
3.6	3.0	9.3			
112.06	113.36	107.06			
43					
5.4					
99.29					
45					
5.6					
99.09					
36	39	45			
4.3	1.8	5.7			
103.39	102.89	98.99			

98

104.59

0+57

0+69

0+83

1+01

1+25

~~1+44~~

0

T

7.02

105.91

1+44

1+36

5.81

98.88

99

45

5.1

99.59

48

5.9

98.96

46

4.9

99.79

48

5.8

99.89

45

6.0

98.69

46

5.8

98.89

43

5.9

98.79

total132235

6.5

6.5

4.4

7.2

99.40

99.70

101.50

96.70

total516233140

6.1

5.5

2

1.6

1.8

7

99.80

100.70

105.70

107.00

109.10

98.90

100

SHADLER GRAVEL DE. GULLEY

0+00

0+22

0+60

0+80

1+00

1+28

1+40

1+60

1+75

1+88

1+91

2+11

	BS	HI	FS	Elev	
BM	1.09	101.09		100	Nail in Tree

0+22

0+60

0+80

1+00

1+28

101

W End S. Side

Stake	2	7	12
	9.0	8.0	7.5
	92.09	93.09	94.9
			98.09

Stake	4	12
	5.4	5.2
	92.6	92.8
		98.7

Stake	9	19
	8.6	7.9
	92.4	93.1
		98.8

Stake	8	18
	8.9	8.4
	92.1	92.6
		98.5

Stake	12
	8.7
	92.3
	98.6

102

	BS	HI	FS	Elev
1+40		101.09		
1				
1+60				
1+75				
1+83				
1+91				
0			40	100.69
+	9.92	110.61		
0+22				
0+60				
0+80				
1+00				
1+28				
1+40				
1+60				

103

Stake	5	12
8.8	8.3	2.0
92.2	92.7	99.19

Stake	6	18
8.9	8.4	.5
92.1	92.4	100.5

Stake	12	15
8.7	2.0	.8
92.3	98.09	100.2

Stake	4	16
9.3	2.7	.5
91.7	92.3	100.5

Stake	3	10
9.2	8.5	1.0
91.8	92.5	100.09

25	33
4.7	9.9
105.9	100.7

23	27	34
4.9	3.3	8.5
105.7	107.3	102.1

26	28	31	37
6.6	4.7	4.6	8.8
109.0	105.9	106.0	101.8

29	31	35	40
5.9	3.7	4.3	7.8
104.9	106.9	106.3	102.8

18	28	31	25	41
4.3	4.2	4.9	3.6	8.2
101.5	96.4	105.7	107.0	102.4

18	23	28	34
9.8	6.0	2.5	6.8
102.8	104.6	108.1	103.8

27	30	31	37
4.6	3.2	3.1	9.2
106.	107.4	107.2	103.4

104

	BS	HI	FS	Elev
1+75		110.61		
1+83				
1+91				
0			11.64	98.97
π	2.99	101.76		
0+22				
0+60				
0+80				
1+00				
1+28				
1+40				
1+60				
1+75				

105

25	27	31	37	
6.0	3.4	3.0	7.5	
104.6	107.2	107.6	103.1	
27	34	40		
3.4	3.8	8.2		
107.2	106.8	102.4		
27	30	33	38	40
2.5	1.4	3.2	4.0	8.0
108.1	109.2	107.4	106.6	102.6
45				
7.6				
92.1				
49				
9.5				
92.2				
52				
9.4				
92.3				
54				
9.0				
92.7				
55				
9.1				
92.4				
49				
9.0				
92.76				
52				
8.6				
92.1				
51				
8.5				
92.2				

106

BS

HI

FS

Elev

101.76

1+83

1+91

27 ft. dist Peak to edge Gravel East End
 23 ft. " " " " " W. End

107

53

8.7

93.0

53

8.8

91.9

108 SHORT GRAVEL PILE AT CAMP

BM BS HI FS ET-77 100

7.35 107.35

0+00

0+10

0+20

0+30

0+40

0+50

0+60

0+70

109

20 19 22 20
10.8 9.6 7.1 10 ✓
96.4 99.9 99.2 97.35

20 16 20 35
10.8 9.7 6.0 9.5 ✓
96.8 97.6 101.3 97.5

20 14 22 22
10.3 9.7 3.0 9.2 ✓
97.0 97.6 104.3 98.1

20 12 22 26 49
10.1 9.4 7.0 3.5 1.4 9.0 ✓
99.2 99.9 100.3 100.8 105.9 97.8

20 18 16 15 50
9.9 9.1 5.7 1 9.7 ✓
97.4 97.4 101.6 107.2 97.6

20 26 18 10 4 14 16 20 27
9.9 8.0 9.2 10.0 9.5 7.0 6.3 9.0 9.2 ✓
99.4 99.5 98.1 97.3 97.8 100.3 101.0 103.3 98.1

25 23 10 4 7 12 16 23 27 34
9.2 5.6 7.2 7.8 5.8 6.8 6.0 7.5 7.9 10.1
98.1 101.9 100.1 99.5 101.6 100.5 101.3 99.8 99.4 97.2

35 10 4 12
9.9 7.7 7.8 9.4
97.4 99.6 99.4 97.9

110

SHORT GRAVEL PILE ON HILL

	BS	HE	FS	EL
BM	4.27	104.27		100

No. 1 in 100
E.S. 1000

0+00

0+10

0+20

0+30

0+40

0+50

0+60

0+65

188

5	10	20	30	40	50	✓							
9.6	9.8	9.0	9.2	9.5	10								
94.6	94.9	95.2	95.0	94.7	94.27								
5	7	10	13	22	20	28	32	37	37	41	52	✓	
9	6.8	5.7	5.8	5.8	5.9	6.7	7.1	8.5	9.1	9.2	9.9		
95.2	95.4	99.5	98.4	98.4	98.3	99.5	99.1	95.9	95.1	95.0	94.3		
5	4	7	12	17	25	39	44	52	✓				
8.5	6.3	6.1	3.5	2.5	3.2	4.5	7.5	9.3	9.7				
95.7	99.9	99.2	100.9	101.9	101	95.7	96.7	94.9	94.5				
5	7	5	8	10	16	25	27	32	42	45	52	✓	
9.7	7.6	5.5	3.5	2.5	1.9	2.9	2.6	4.6	6.9	9.2	9.7		
96.0	96.6	98.7	100.7	101.7	102.3	101.3	101.6	99.6	99.3	95.	94.5		
5	1	3	8	12	15	20	27	33	40	46	50	52	✓
7.9	7.7	5.3	3.8	2.9	2.0	1.7	1.9	2.8	5.2	7.7	8.5	8.9	
96.3	96.5	98.9	100.4	101.3	102.2	102.5	102.3	101.4	99.0	96.5	95.7	95.3	
5	6	10	13	20	32	41	44	50	52	✓			
7.5	7.2	5.3	4.6	2.8	3.4	4.2	5.3	8.1	8.9				
96.7	97.0	98.9	99.6	101.4	100.8	100.0	98.9	95.5	95.3				
5	14	13	16	18	30	33	41	52	✓				
7.9	7.8	7.5	7.8	6.9	6.1	6.4	7.9	8.5					
96.3	96.4	96.9	96.4	99.3	98.1	99.8	96.3	95.7					
5	26	52	✓										
5.4	8.7	3.7											
95.3	95.5	95.5											

112

SADLER'S GRAVEL PILE GUILLET PLACE

	BS	HI	FS	Elev	Nail in stump
Big	9.88	109.88		100	
0+28					

0+38

0+48

0+58

0+68

O

K

8.84 117.73

0+28

0+38

0+48

0+58

O

K

1.46 110.17

0+28

0+38

SMALL PILE

S	8	16		
10.0	9.0	1.0		
99.89	102.89	108.56		

S	4	16		
10.0	9.5	1.9		
99.48	100.38	107.76		

S	5	17		
10.0	9.7	2.5		
99.86	100.38	107.33		

S	6	18		
10.4	9.7	2.8		
99.95	100.18	107.08		

S	4	16	23	
10.1	9.6	2.5	6.8	
99.76	100.29	102.34	103.08	

21	25	28	30	40
5.8	4.3	1.8	1.8	9.3
111.93	113.23	115.93	115.93	109.43

25	27	37	
3.6	2.6	9.6	
117.13	115.13	106.13	

24	29	33	41
5.5	5.0	6.3	12.2
112.23	112.73	111.93	105.63

21	27	22	36
9.1	7.9	9.0	11.4
108.63	110.03	106.73	106.33

50
9.3
100.37
29
9.7
100.27

113

114

0+48

110.17

0+58

0+68

27' - Pede to W End

8' - Lost Sact to E End

115

49
7.6
100.27

45
7.8
100.37

<u>29</u>	<u>37</u>
7.7	10.5
102.97	99.97

116

Dr. Dean Grave / Pite

2-25-3

E. side Pite

0+00
 ✓ 0+11
 ✓ 0+19
 ✓ 0+25
 ✓ 0+34
 ✓ 0+40
 ✓ 0+49
 ✓ 0+54
 ✓ 0+58
 ✓ 0+63
 ✓ 0+66
 ✓ 0+71
 ✓ 0+79
 ✓ 0+84

0+92

BM₇

BS

HI

FS

Elev

5.12

105.72

100 ^{LN 101/55 Pite}
4' from ground

0+00

0+11

0+19

0+25

117

E	400	W
35		10
9.18	97	10.24
96.55	96.03	95.47
35		10
8.87	97.73	10.03
96.86	98.10	95.7
40	30	10
8.58	6.15	10.85
97.15	99.56	95.65
	102.53	
	105.53	
	97.2	
	98.94	
29	22	20
8.4	8.6	10.07
97.33	97.13	95.66
	98.83	
	99.75	
	100.78	
	98.85	
	95.86	

118

105.73

0+34

0+40

0+49

0+54

0+58

0+63

0+66

0+71

0+79

0+84

0+92

119

27	11	8	4	200	3	1	17	21	24	33	37
8.64	5.5	3.9	5.8	9.15	2.67	9.44	10.37	10.57	8.34	8.7	8.9
97.09	100.23	101.53	100.23	96.56	96.06	96.27	95.36	95.48	97.31	97.03	97.83

20	12	6	5	9	12	16	23	31	35	39	
8.3	5.45	4.74	7.7	8.6	8.6	7.5	9.67	9.7	8.88	8.4	9.46
117.73	100.25	100.9	99.26	99.13	97.79	97.31	96.76	96.03	101.8	97.33	96.25

22	12	8	4	12	17	22	24	26	32	
8.1	8.2	6.6	6.4	4.3	4.1	6.31	6.3	5.15	7.2	9.75
97.25	97.23	99.13	99.33	101.93	101.03	99.90	99.33	100.58	98.93	96.94

21	12	8	3	4	6	11	16	20	23	29	37	
8.45	8.1	6.1	6.3	5.4	16	2.8	4.95	7.6	7.5	8.5	8.6	8.25
97.28	97.63	97.63	99.43	100.73	105.13	102.33	100.78	98.18	98.48	97.98	97.13	96.45

23	20	18	12	10	4	2	2	8	16	22	23	24	
8.25	7.9	6.8	7.1	6.25	6.	4.30	4.5	3.1	5.7	7.0	9.5	8.5	9.1
97.98	97.83	97.23	98.63	99.48	99.73	101.28	105.23	102.63	100.03	98.93	96.23	97.22	96.63

28	12	11	7	3	8	12	21	23	25	
8.1	1.7	5.2	5.4	4.7	7.5	7.2	7.1	8.1	9.1	8.9
97.63	101.03	100.53	100.23	101.03	103.73	98.53	98.63	97.63	96.73	96.93

21	12	14	7	5	2	7	19	22	22	
8.0	2.13	1.5	5.4	4.0	4.4	4.7	7.6	2.25	9.0	8.25
97.72	103.93	101.23	102.32	101.23	101.33	101.03	96.13	99.98	96.23	96.88

28	19	10	5	1	6	12	24	
8.2	3.0	1.9	4.5	4.6	4.6	7.8	8.4	8.9
97.53	102.93	96.93	101.23	101.12	101.13	99.53	97.33	96.83

26	12	16	11	6	5	12	24	
7.7	4.9	4.8	2.8	4.5	4.5	6.2	8.3	8.1
98.03	102.83	100.53	102.93	101.23	101.23	97.53	97.93	97.03

23	11	8	6	11	15	
7.8	5.3	6.3	8.2	8.3	8.5	8.9
97.93	100.43	99.93	97.53	97.43	97.23	96.83

20	20
8.25	8.15
97.48	96.98

120

North Pile

✓ 0+00 West End
 ✓ 0+7
 ✓ 0+16
 0+24
 0+32
 0+40
 0+50

West Pile

✓ 0+00 South End
 ✓ 0+7
 ✓ 0+13
 ✓ 0+20
 0+25
 0+30
 0+40
 0+50
 0+60

West Pile

BM 6.26 106.26

100 Nailplate

0+00

0+07

0+16

121

		S			
13	200	8	10	14	21
11.45	12.15	9.2	8.6	2.5	10.5
99.81	96.11	97.06	97.66	97.76	95.76
22	200	6	12	15	19
10.9	9.1	7.6	7.7	7.2	10.3
95.36	97.16	98.66	98.56	98.06	95.91
15	10	4	10	14	21
12.3	8.9	3.4	6.4	8.3	10.6
95.96	93.6	92.56	91.56	97.56	96.76
					95.66

122

10626

0+24

0+32

0+40

0+50

0+00

0+7

0+13

0+20

0+25

0+30

0+40

0+50

0+60

WEST Pk

123

14

5

12	4.2	2	11	19
10.4	4.8	6.3	10.2	10.8
95.86	101.96	99.96	96.06	95.96

9	6	1	7
9.8	8.8	6.3	6.6
96.96	97.96	97.96	97.06

10	5	10
10.1	7.3	10.3
96.16	98.96	95.96

10	10
10.9	10.9
95.36	95.36

18	10	16	21	27	32
10.7	10.2	10.7	11.8	10.4	9.5
95.56	94.06	95.36	95.96	95.86	96.76

18	6	18	22	30
10.4	8.2	7.2	8.2	7.9
95.86	98.06	99.14	97.06	98.06

22	13	8.5	11	14	21	31
10.1	8.9	8.6	5.1	1.7	5.8	7.4
95.96	97.36	97.66	101.16	101.56	100.46	98.36

10	2	3	10	12	20	30
10.3	9.7	8.6	9.9	8.2	7.1	10.7
95.96	96.56	97.66	97.86	101.06	102.16	95.56

10	3	2	9	15	20	30
11.1	8.8	8.2	8.1	3.5	6.1	1.0
97.76	97.96	98.06	98.16	102.76	100.14	96.76

10	5	11	18	26
8.4	8.5	3.3	5.5	11.4
97.86	97.76	107.96	100.96	98.66

7	1	4	8	13
1.0	9.3	3.7	7.1	2.4
96.26	96.46	96.56	99.36	98.86

7	5	12
11	10.7	11.2
95.26	95.56	96.06

7	11	17
11.4	11.0	12.0
94.86	95.26	94.26

124 Ditch on Road G 16 Along

	BS	HI	FS	Elev
B.M.	5.08	105.08		100.00
0+00				
1+00				
2+00				
3+00				
4+00				
①			.62	104.46
π	5.01	109.47		
5+00				
6+00				
7+00				
8+00				
9+00				
10+00				
11+00				
②			4.02	105.45
π	6.99	112.44		
12+00				
13+00				
14+00				
15+00				
16+00				
17+00				
18+00				

4-6-33 CELOGAN

125 Farm of Archie Kahl

Stake		Sideditch	
NE Corner East Handrail Bridge at Sta 100			
			100 - 9.1 = 91.9 FL outlet
6.96	98.12	8.52	96.56
4.66	100.42	6.77	98.31
2.82	102.26	4.92	100.16
.62	104.46	3.15	101.93
4.44	105.03	6.50	102.77
4.78	104.69	6.44	103.03
4.99	102.48	6.42	103.05
4.79	104.68	6.07	103.40
4.58	104.89	6.42	103.05
4.21	105.26	6.58	102.89
4.02	105.45	6.00	103.47
6.44	106.00	7.92	104.52
5.28	107.16	7.23	105.21
5.20	107.24	6.38	106.06
4.82	107.62	6.42	106.02
4.01	108.43	6.00	106.44
3.82	108.62	5.50	106.94
3.75	108.69	5.5	106.94

126

	B 6	H D	FS	
		112.44		
0			8.75	108.69
T	6.31	115.00		
Pond			8.80	106.20
19+00				
20+00				
21+00				
Pond			7.90	102.10
22+00				
23+00				
+70	Survey note		1.10	113.90
0			6.31	108.69
T	3.54	112.23		
0			6.84	105.39
T	4.00	109.39		
0			5.02	104.37
T	2.42	106.99		
			6.82	97.97

127

8/10/20

P/W

5.51	109.49	7.21	107.79
4.82	110.18	6.73	108.27
3.86	111.14	5.88	109.12
3.15	111.85	4.55	110.45
1.37	113.63	2.60	112.40

11.05
8.7
2.8

	BS	HI	FS	Elev
BM	4.10	104.10		100
0+00				
1+00				
2+00		Fence west		
		2+15 F East		
3+00				
		3+20 Fence west		
4+00				
5+00				
6+00				
	+ 25	EE F 6.2		12" Survey
7+00		+ 80 Fence west		
	⊙		3.87	100.23
	⊙	4.29	104.52	
8+00				
9+00				
10+00				

W	±	E				
Top W. Hill - 0+14 - S End Road						
	4.12					
	99.98					
100.43	99.40	99.85	100.05	100.10	99.10	100.10
3.67	4.20	4.14	4.25	4.0	5.0	4
31	28	24	14	5	3.0	F
99.90	99.50	99.80	100.30	100.30	98.80	99.80
4.2	4.6	4.3	3.8	3.9	5.3	4.3
31	28	25	14	5	2	F
99.7	98.6	99.5	99.6	99.7	98.1	99.2
4.4	5.8	2.6	4.5	4.4	6.0	4.9
30	27	25	16	6.0	2	F
99.4	98.5	98.1	98.1	98.6	98.6	99.8
4.7	5.6	5.0	5.0	4.5	5.5	4.8
30	28	25	10	5	2	F
98.1	98.0	98.4	98.5	98.9	97.8	99.1
5.0	6.0	5.70	5.6	5.20	6.3	5.0
28	26	24	14	5	2	F
98.3	98.6	98.1	98.1	99.9	99.2	99.9
5.8	6.6	6.0	6.0	6.2	6.9	6.2
30	28	25	15	4	1	F
99.7	98.5	99.2	99.9	99.8	98.7	99.9
4.4	5.6	4.2	4.2	4.3	5.4	4.2
31	28	25	15	6	2	F
99.22	98.62	99.72	99.72	99.82	99.22	99.72
5.3	5.9	4.8	4.8	4.7	5.3	4.8
30	27	24	15	4	1	F
100.12	98.72	99.72	100.12	100.52	99.62	100.72
4.4	5.0	4.8	4.4	4.0	4.4	3.8
30	27	24	15	3	2	F
100.92	98.52	100.32	100.62	100.72	100.12	101.32
5.0	5.0	4.2	3.4	3.9	3.4	3.2
30	27	24	16	5	3	F

130

	BS	HI	FS
		104.52	
11+00			
12+00			
13+00	8' Gas Pipe		
14+00			
○			6.22 99.30
⊥	6.26	105.56	
15+00			
16+00	Fence E+W		
17+00			
	+50 House west		
BM	Sill of N window		2.35
18+00			
19+00	Bar west		
20+00			
○			6.32 99.24
⊥	3.46	102.70	

131

	VI			E							
	99.32 5.2 28	98.32 6.2 26	99.02 5.5 22	99.32 5.3 13	99.32 5.8 5	98.82 5.7 5	99.62 4.7 F				
		98.42 6.1 29	99.92 6.8 25	98.42 6.1 23	98.62 5.9 14	98.62 5.9 5	99.32 6.7 2				
		99.52 6.0 28	99.92 6.6 25	98.32 6.2 22	98.92 5.8 14	98.32 6.2 4	99.82 6.7 2				
		98.62 6.9 29	99.72 6.7 27	98.52 6.0 24	98.52 6.0 14	98.42 6.1 5	99.72 6.8 2				
					99.06 6.2 29	98.26 6.1 27	98.86 6.1 28	99.36 6.2 14	99.26 6.3 6	98.36 6.7 F	
					100.96 4.6 28	99.86 5.2 23	100.36 5.2 21	100.76 4.8 13	100.66 4.9 5	99.96 5.6 7	100.96 4.7 F
					100.96 4.6 30	101.06 4.6 23	101.26 4.3 14	101.26 4.3 5	101.66 4.9 2	100.66 4.9 2	101.46 4.1 F
					100.46 5.1 30	99.56 6.0 26	99.96 5.6 24	100.66 4.9 14	100.26 5.3 5	99.56 6.0 2	100.76 4.8 F
					99.26 6.3 30	99.46 6.1 25	99.76 5.8 14	99.56 6.0 6	98.66 6.9 5	99.96 6.6 F	
					98.66 6.9 30	99.16 6.4 23	98.96 6.6 25	98.86 6.7 6	98.16 7.4 5	98.96 6.6 F	

BS HI FG

107.70

21+00

22+00

23+00

24+00

25+00

26+00

Sewer Road side

27+00

0

5.48 97.22

T

7.94 105.16

(28+00

28+00

+ 25 F. East

29+00

30+00

Don wmt

+60 Horza wmt

BM

SE Cor. Cont. Porch

0.46 104.70

T

.06 104.76

W

E

98.8
3.90
30

99.5
5.2
26

98.4
4.3
14

99.8
4.9
3

99.5
3.7
F

98.6
3.1
30

99.1
5.6
27

98.0
4.7
16

97.9
4.8
7

98.9
5.8
3

98.1
4.6
F

99.6
5.1
31

96.9
5.8
28

99.5
5.2
25

99.7
5.0
16

99.5
5.2
7

98.8
5.7
3

99.8
4.7
F

99.0
5.7
30

99.6
6.1
23

99.8
4.9
18

99.6
5.1
6

96.5
6.2
3

99.8
4.3
F

97.3
5.4
30

96.0
6.7
27

96.9
5.8
15

96.3
6.4
3

99.0
5.7
F

96.7
6.0
30

96.1
6.6
27

96.6
6.1
16

96.5
6.2
6

98.8
6.9
3

96.7
6.0
F

96.2
6.5
30

95.7
7.0
28

96.5
6.2
26

96.9
5.8
17

97.7
6.0
5

95.9
6.7
2

96.7
6.2
F

98.8 98.1 96.7 96.6 96.6 96.6
5.8 5.4 5.1 5.4 5.1 5.4
27 25 16 5 3 F

96.96 96.56 99.56 97.96 96.46 99.96
6.7 6.0 7.6 7.7 6.7 6.7
31 28 15 6 2 F

98.56 97.96 98.56 98.66 98.46 99.86 98.56
6.6 7.2 6.6 6.0 6.7 7.3 6.0
22 29 26 12 5 2 F

99.36 98.86 99.86 99.86 99.86 98.86 99.86
5.8 6.3 5.3 5.3 5.3 6.3 5.3
31 29 22 16 7 3 F

Bs HI FS

104.76

31+00

32+00

33+00

34+00

+90 -54" Survey + Face West

35+00

Face E

+50 House East +90 Face

36+00

0

9.12 95.64

T
37+00

3.66 99.30

38+00

39+00

40

41

42+00

42+50

W

E

100.86 3.9 31	100.06 4.1 28	100.66 4.1 23	100.56 3.7 18	100.26 4.5 7	99.96 5 F
---------------------	---------------------	---------------------	---------------------	--------------------	-----------------

100.16 4.6 31	99.36 5.4 29	100.26 4.5 21	100.96 4.3 19	100.56 4.2 14	99.36 5 F
---------------------	--------------------	---------------------	---------------------	---------------------	-----------------

97.96 7.0 29		92.96 7.0 22	97.86 7 8	97.56 7 F
--------------------	--	--------------------	-----------------	-----------------

95.46 9.3 22	95.06 9.7 27	95.66 9.1 23	95.96 8.8 18	96.06 8.7 14	95.26 9.1 14
--------------------	--------------------	--------------------	--------------------	--------------------	--------------------

94.86 9.8 29	94.46 10.3 27	95.16 9.6 23	94.96 9.8 14	94.86 9.9 2	94.46 10.3 F
--------------------	---------------------	--------------------	--------------------	-------------------	--------------------

95.66 9.1 29	94.86 9.9 26	95.26 9.5 23	95.46 9.3 15	95.46 9.3 7	95.16 9.5 F
--------------------	--------------------	--------------------	--------------------	-------------------	-------------------

95.6 3.7 29	95.6 2.7 26	96.6 2.7 23	96.5 2.8 12	96.6 2.7 7	95.9 3.6 4	96.0 3.3 F
-------------------	-------------------	-------------------	-------------------	------------------	------------------	------------------

95.0 3.3 29	94.2 4.1 26	95.5 3.8 24	95.5 3.8 15	95.4 3.9 5	94.9 4.2 3	95.6 2.7 F
-------------------	-------------------	-------------------	-------------------	------------------	------------------	------------------

94.6 4.9 30		95.2 4.1 10			95.1 4.2 F
-------------------	--	-------------------	--	--	------------------

94.9
4.495.0
4.295.0
4.295.3
3.8

136

Sodley Gravel Myers Pt June 190

BM

100 = NP

7.86 107.86

0+25

0+78

1+04

D

.21 107.65

T

10.73 118.38

1+04

0+78

0+25

-10.67 107.69

O

T

1.10 108.79

1+04

0+78

0+25

1+28 End

137

$$\begin{array}{r} 21 \\ 4.3 \quad 1.3 \\ \hline 93.56 \quad 109.36 \end{array}$$

$$\begin{array}{r} 21 \\ 13.8 \quad 1.0 \\ \hline 94.06 \quad 106.86 \end{array}$$

$$\begin{array}{r} 21 \\ 2.5 \quad 2.2 \\ \hline 94.06 \quad 105.66 \end{array}$$

$$\begin{array}{r} 40 \\ 6.2 \quad 12.7 \\ \hline 112.18 \quad 105.68 \end{array}$$

$$\begin{array}{r} 53 \\ 1.1 \quad 12.4 \\ \hline 117.28 \quad 105.98 \end{array}$$

$$\begin{array}{r} 25 \\ 1.4 \\ \hline 113.98 \end{array}$$

$$\begin{array}{r} 72 \\ 7.1 \quad 15.2 \\ \hline 99.69 \quad 93.59 \end{array}$$

$$\begin{array}{r} 82 \\ 9.4 \quad 12.8 \quad 14. \\ \hline 99.39 \quad 95.99 \quad 94.99 \end{array}$$

$$\begin{array}{r} 60 \\ 15.7 \\ \hline 93.09 \end{array}$$