

186.

John T. Barnett Ditch Book.
1933.

1933
Ditch Book
1933

ITTER



KEUFFEL & ESSER CO.

DRAWING MATERIALS
AND
SURVEYING INSTRUMENTS.
NEW YORK.

CHICAGO. ST. LOUIS. SAN FRANCISCO. MONTREAL.

TABLES FOR EXCAVATIONS AND EMBANKMENTS.

DISTANCES FROM CENTER OF ROADWAY FOR CROSS-SECTIONING,
ROADWAY 18 FEET WIDE. SIDE SLOPES 1 TO 1.
FOR SINGLE TRACK EXCAVATION.

"Copyright, 1935, by Keuffel & Esser Co."

	0	.1	.2	.3	.4	.5	.6	.7	.8	.9	
0	9.0	9.1	9.2	9.3	9.4	9.5	9.6	9.7	9.8	9.9	0
1	10.0	10.1	10.2	10.3	10.4	10.5	10.6	10.7	10.8	10.9	1
2	11.0	11.1	11.2	11.3	11.4	11.5	11.6	11.7	11.8	11.9	2
3	12.0	12.1	12.2	12.3	12.4	12.5	12.6	12.7	12.8	12.9	3
4	13.0	13.1	13.2	13.3	13.4	13.5	13.6	13.7	13.8	13.9	4
5	14.0	14.1	14.2	14.3	14.4	14.5	14.6	14.7	14.8	14.9	5
6	15.0	15.1	15.2	15.3	15.4	15.5	15.6	15.7	15.8	15.9	6
7	16.0	16.1	16.2	16.3	16.4	16.5	16.6	16.7	16.8	16.9	7
8	17.0	17.1	17.2	17.3	17.4	17.5	17.6	17.7	17.8	17.9	8
9	18.0	18.1	18.2	18.3	18.4	18.5	18.6	18.7	18.8	18.9	9
10	19.0	19.1	19.2	19.3	19.4	19.5	19.6	19.7	19.8	19.9	10
11	20.0	20.1	20.2	20.3	20.4	20.5	20.6	20.7	20.8	20.9	11
12	21.0	21.1	21.2	21.3	21.4	21.5	21.6	21.7	21.8	21.9	12
13	22.0	22.1	22.2	22.3	22.4	22.5	22.6	22.7	22.8	22.9	13
14	23.0	23.1	23.2	23.3	23.4	23.5	23.6	23.7	23.8	23.9	14
15	24.0	24.1	24.2	24.3	24.4	24.5	24.6	24.7	24.8	24.9	15
16	25.0	25.1	25.2	25.3	25.4	25.5	25.6	25.7	25.8	25.9	16
17	26.0	26.1	26.2	26.3	26.4	26.5	26.6	26.7	26.8	26.9	17
18	27.0	27.1	27.2	27.3	27.4	27.5	27.6	27.7	27.8	27.9	18
19	28.0	28.1	28.2	28.3	28.4	28.5	28.6	28.7	28.8	28.9	19
20	29.0	29.1	29.2	29.3	29.4	29.5	29.6	29.7	29.8	29.9	20
21	30.0	30.1	30.2	30.3	30.4	30.5	30.6	30.7	30.8	30.9	21
22	31.0	31.1	31.2	31.3	31.4	31.5	31.6	31.7	31.8	31.9	22
23	32.0	32.1	32.2	32.3	32.4	32.5	32.6	32.7	32.8	32.9	23
24	33.0	33.1	33.2	33.3	33.4	33.5	33.6	33.7	33.8	33.9	24
25	34.0	34.1	34.2	34.3	34.4	34.5	34.6	34.7	34.8	34.9	25
26	35.0	35.1	35.2	35.3	35.4	35.5	35.6	35.7	35.8	35.9	26
27	36.0	36.1	36.2	36.3	36.4	36.5	36.6	36.7	36.8	36.9	27
28	37.0	37.1	37.2	37.3	37.4	37.5	37.6	37.7	37.8	37.9	28
29	38.0	38.1	38.2	38.3	38.4	38.5	38.6	38.7	38.8	38.9	29
30	39.0	39.1	39.2	39.3	39.4	39.5	39.6	39.7	39.8	39.9	30
31	40.0	40.1	40.2	40.3	40.4	40.5	40.6	40.7	40.8	40.9	31
32	41.0	41.1	41.2	41.3	41.4	41.5	41.6	41.7	41.8	41.9	32
33	42.0	42.1	42.2	42.3	42.4	42.5	42.6	42.7	42.8	42.9	33
34	43.0	43.1	43.2	43.3	43.4	43.5	43.6	43.7	43.8	43.9	34
35	44.0	44.1	44.2	44.3	44.4	44.5	44.6	44.7	44.8	44.9	35
36	45.0	45.1	45.2	45.3	45.4	45.5	45.6	45.7	45.8	45.9	36

Calculated by Julien A. Hall, M. Am. Soc. C. E.

188

John T. Barnett Ditch

15753?

May Term 1939

Viewers

Harold Cook. - Surveyor.

Frank Parman.

Ed Bailey.

John T. Barnett Ditch
 April - 1939 Center, Union & Middle Twp

	DISTANCE	FROM	TO.	
①	330'	W. Ditch on #39	N line of Winnings	Sta. 0+00
②	1171'	W. Ditch of Popes	Road of Run, East	Sta. 62+22
③	1263'	E. Rd	W. Ditch on Hoover	Sta. 48+66
④	738'	Gen 16	W. Ditch So.	Sta. 36+78
⑤	241'	Hughes E Line & McAlphin W. Ditch		
⑥	711'	Rd on McCord Sabine McCard So. line	W. Ditch	Sta. 151+67
⑦	870'	Rd on Taylor E line	W. Ditch So.	
⑧	300'	Eller W. line Duke E. "	W. Ditch W.	Sta. 181+93
⑨	846'	Rd on Duke W. line	W. Ditch	
⑩	154'	Norman W. Gen. 4	W. Ditch No.	Sta. 258+11

McCord W. line - Varirka E. line on South side of E & W Road to W. Barnett Ditch - 82'

Pope E. line - Varirka W. line on South side of E & W Road to W. Ditch 1067'

682' From W. Ditch to Cross Roads at Obettiggins Sta. 290+89

0+00 whand rail on st. Rd #39

0+71 approx E R/r Rd #39
N 69° E

3+72 Def L - 20° 22'

6+65 Geo. Miles Ditch from North

6+82 Def. L - 7° 19'

8+71 Def L - 22° 26'

13+23 Def. R - 43° 22'

16+09 Def L - 03° 11'

19+83 Def R 36° 00'

22+59 Def L 33° 14'

26+18 Def L 36° 51'

26+22 E & W. fence line Hoovermale N. Line

26+51 Ditch from W.

27+60 Def L 1° 51'

30+17 Def R 86° 29'

33+22 Def. R 20° 22' ✓

35+52 Def L 46° 37'

36+78 N & S Fence - Stevenson E. Line -

39+10 Ditch from South

41+67 Def L 67° 52'

45+11 Def R 35° 55'

46+23 Def L 23° 30'

16+0 4" tile

- Stevenson So Line

160 ft tile 4"
10" CMP 6"

Hoovermale W. Line

Tile East

48+66 E+W Fence Hoovermale N. line
Harrison South line

~~49+51~~ Def R 15°36'

~~53+00~~ Tile from NW. ~~Not in~~

58+44 Def L 36°16'

60+69 Def R 38°50'

62+07 Def R 12°30' WR/w Popes Rd

62+42 ER/w Pope Rd

63+44 Def R 42°03'

65+69 Def L 101°30'

66+18 & Popes Bridge

67+54 Def R 44°22'

69+38 Def L 79°16'

71+00 Def R 32°55'

72+94 Def R 41°05'

73+15 & Tucker Ditch from North

75+26 Def R 58°09'

80+45 Def L 14°18'

83+78 Def L 13°33'

86+73 Vavirka W line, Pope E line

87+89 Def L 35°51'

89+86 Def L 22°35'

91+88 Def L 19°04'

94+02 Def R 12°34'

96+42 Def R 60°10'

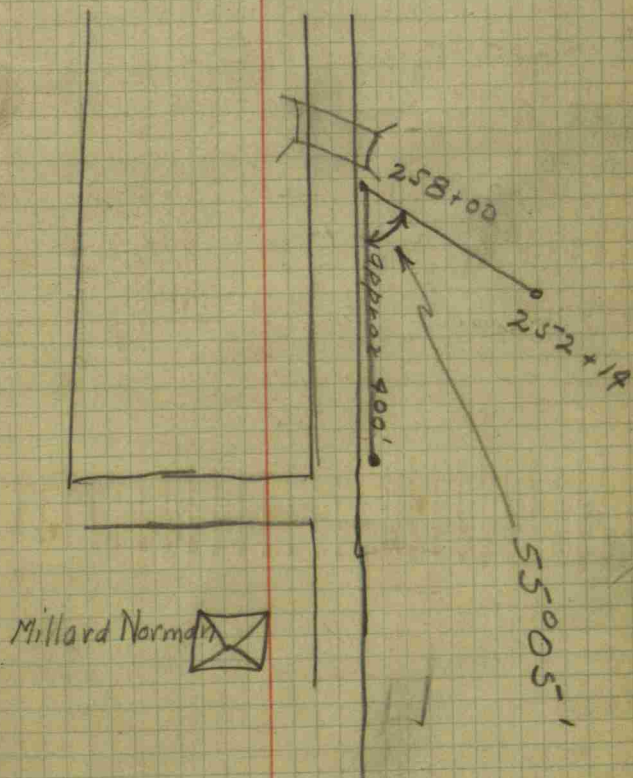
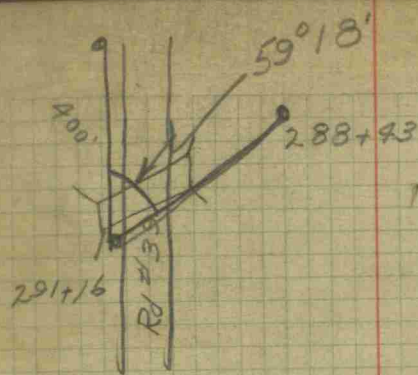
51+0 - Tile

100+87 Def R ^L 42°04'
 101+08 S R/W line on Maplewood Rd.
 101+48 N " ^{G 2°35"} " " (X)
 103+49 Def R 32°35' ok
 106+63 Def L 37°18' ok
 108+53 Def R 34°30' ok
 111+29 Def L 55°51' ok +
 113+06 Def R 21°43' ok
 118+61 Def L 14'18' ~~ok~~ N 38° E
 118+96 S R R/W (X)
 119+96 Approx N R/W R.R.
 120+22 Def R 78°16' ok
 128+55 Def L 42°09' ok
 130+56 Def R 11°40' ok
 134+61 Def L 42°26' ok
 135+00 Property fence Smith So. line
 137+59 Def R 35°16' ok
 141+53 Def L 21°49' ok
 143+84 Def L 42°41' ok
 144+95 Fence line
 150+30 Def L 45°37'
 151+67 Property line Smith N. line
 153+16 Def R 13°39'
 156+00 Def R 25°02'
 159+08 Def R 8°51'

147+00
 145+00 Smith Farm Bridge
 135+00 Smith So. Side
 10+00
 145+30 Lane N.W. E. 18" tile
 135+00
 10+30
 151+67
 135+00
 16+67

161+08	Def L	75°40'
163+72	Def R	22°27'
167+32	Def L	18°50'
169+82	Def L	41°32'
172+51	Def R	41°10'
174+47	Def L	21°45'
179+15	Def R	31°24'
181+77	South	R/W on E & W Road
182+09	North	" " " " "
183+59	Def L	52°30'
185+30	Def R	25°14'
186+63	Def R	21°13'
189+13	Def L	34°17'
191+48	Def L	16°00'
191+54	Property line	Duke - Snyder
192+78	Def L	31°21'
214+11	Def R	22°45'
218+60	Def R	44°30'
220+49	Def L	40°42'
221+38	Def L	28°04'
227+78	Def L	11°27'
233+70	Def R	35°04' -
236+14	Property line	
240+28	Def R	20°07'

247+35 Def R $8^{\circ}06'$
 252+14 Def L $10^{\circ}55'$
 255+57 Property line
 257+93 E R/w line of N & S Road
 258+00 Def R $6^{\circ}09'$
 258+29 W R/w Line of N & S Road
 260+65 Def L $49^{\circ}32'$
 271+59 Def L $87^{\circ}24'$
 274+28 Def R $51^{\circ}03'$
 274+69 Norman W line - O. Higgins E line
 276+96 Def L $35^{\circ}22'$
 278+77 Def R $32^{\circ}30'$
 283+04 Def R $39^{\circ}16'$ 288+43 Def L $31^{\circ}18'$
 290+44 E R/w line of Rd #39
 291+16 Def R $30^{\circ}36'$
 291+33 W R/w Line of Rd #39
 302+39 End of Ditch



Bench Marks

Sta 101+18 E end South rail Conc Bridge
El. 100.80

Sta 119+46 SE wing at End of cur. B.R.R.
El. 110.97

Sta 181+95 E end South rail of Culvert.
El. 115.13

North Wing of Butment

Sta 202+20 E end Header Blessing Ditch
~~El. 112.57~~ 112.49

Sta 220+80 W end Header Montgomery Dt.
El. 114.19

11/16
12097
4/9

Bench Mark Check

-	+	+	BM	Ends rail Bridge 101+13.
			110.80	
	112.40	1.60	¹	
4.28			108.32	
	112.25	4.63	⁷	
4.05			108.90	
	115.95	7.05	⁷	
1.00			114.95	
	121.73	6.78	¹	
3.37			118.36	
	123.74	5.38	⁵	
5.75			117.99	Temp BM at RR
	120.37	2.38	⁴	
5.45			118.72	
	118.54	3.62	⁸	
5.66			116.88	
	117.54	4.20	⁶	
5.72			111.16	BM at RR Bridge
			100.73	

B.M. - check

-	+	BM
		117.79
	119.07	1.28
2.85		116.22
	116.39	.12
6.65		109.69
	114.99	5.30
3.63		111.36
	115.57	4.18
4.63		110.91
	117.61	6.70
1.05		116.56
	122.40	5.84
5.00		117.40
	120.00	2.60
4.82		115.18

Temp BM
at P.P. cross

BM at
Dukes
181+95

B. M. check

-	+	BM
		115.13 B.M. 781+95
116.96	183	
4.45		112.51
116.57	4.07	
3.20		113.37
118.34	4.97	
5.85		112.49 B.M. on bridge 202+20
118.44	5.95	
3.80		114.64
118.99	4.35	
4.25		114.74
118.94	4.20	
4.73		114.19 B.M. 220+8
119.29	5.10	119.21 check
3.70		115.59
119.79	4.20	
4.23		115.56
120.56	5.00	
4.05		116.51
121.09	4.58	
1.90		119.19
123.45	4.26	
4.28		119.17 B.M. 258+00

B.M. at Sta. 258+00
 on SE. Wing next to
 E. Head rail.
 El. 119.17

Headwall
 Montgomery Ditch.

-	+	B.M. sta 251
		119.17
123.45	4.28	
3.67		119.78
123.78	4.00	
2.38		121.40
125.90	4.50	
30		125.60
135.38		
135.88	9.78	126.99
8.40		127.22
130.88		
130.38	3.90	121.72
9.16		122.26

B.M. at
291+00

121.72
B.M. at Sta 291+00 - El. 102.16
on SW Wing at So. End West
Hand Rail to Bridge on
Road # 39.

Check B.M. from Sta 291+0
to Sta. 101+8

	-	+	B.M.
			121.72
			119.17
	131.35		
	128.80	9.63	128.97
2.38			126.12
	132.19		
	129.67	3.22	127.23
4.96			124.68
	130.98		
	128.73	3.75	125.08
5.90			122.53
	128.89		
	126.37	3.21	123.89
5.00			121.34
	124.69		
	122.14	.80	116.39
8.30			113.84
	120.57		
	118.02	4.18	115.97
4.60			113.42
	121.92		
	119.37	5.95	116.72
5.20			114.17
	120.47		
	117.92	3.75	115.02
5.45			112.47
	119.82		
	117.27	4.80	116.59
3.23			114.04
	123.19		
	120.64	6.60	117.92
5.27			115.37
	118.82		
	116.27	.90	112.47
6.35			109.92

B.M. Sta
291+00

Temp 81
at R/W

Rd #39 } Leathers (SW)
& Roundtown Rd } corner

	115.25		112.47
	112.70	2.78	109.92
6.63	113.40		108.62
	110.87	4.80	106.07
3.58	115.69		109.84
	112.14	5.85	107.29
5.65	115.06		110.04
	112.51	5.02	107.49
3.15			111.01
			109.36

3.86 - 111.39
~~108.84 B19.~~

	115.78		111.37	Temp. 317
	113.25	4.91	108.84	
8.30	110.53		107.48	
	108.00	3.05	104.95	
9.27			106.26	B.M. at
			103.73	Sta 62+02

B.M. at sta 62+02
 on NE ~~end~~ Wing on
 E rail on Pope Bridge

-	+		B.M.
	117.27		116.70 Temp Bk
	114.74	.57	110.65
6.62	112.70		108.12
	110.17	2.05	109.05
3.65	113.45		106.52
	108.93	4.40	108.03
5.42	111.51		105.60
	108.98	3.48	106.76
4.75	116.31		104.23
	113.78	9.55	109.41
6.90	109.89		106.88
	107.36	.48	103.59
6.30			101.06 B.M. at Sta. 0+00

B.M. at Sta. 0+00 - E.I. 103.59
 on NW cor. West wing at Bridge on
 St. Rd #39.

-	π	+	B.M.
	107.06		103.53 BM at 0+00
	104.53	3.47	101.06
9.60	99.62		97.46
	97.09	2.16	94.93
3.06	101.41		96.56
	102.88	4.85	94.03
5.23	97.51		96.18
	98.98	1.33	97.55
6.90	98.31		90.61
	99.78	7.70	92.08
3.15	99.52		95.16
	100.99	4.36	96.63
4.50			95.02
			96.49

Pres. Ditch

0+71
1202
E1.8760

3+72
10.05 - 87.46

6+65
8.40 - 89.11

8+71
8.43 - 89.88

13+23
2.58 - 89.94

-	+		
	103.18		B.M. 2 95.02
	104.65	8.16	96.75
7.90			95.28
			96.75

	100.01		
	101.48	4.73	

3.47	100.87		96.54
	102.54	4.33	98.01

6.58	101.59		94.29
	103.06	7.30	95.76

Pres. Ditch

16+09
1044 - 89.57

19+83
9.02 - 90.99

22+59
9.93 - 90.94

26+18
9.90 - 90.97

27+60
9.63 - 91.96

-	+	+	BM.
	101.59 103.06		
3.28	101.91 103.38	3.60	98.31 99.78
.64	101.37 102.84	.10	101.27 102.74
3.93	102.24 103.71	4.80	97.44 98.91

Pres. Ditch

30+17
9.95 - 91.64

4" Tile at sta 30+45 N.S.
Flow line 5.55 - 96.36

33+22
9.82 - 92.09

92.09

35+52
8.75 - 92.62

- + B.M.

102.24
~~103.71~~

3.23 105.76
~~106.23~~ 6.75

6.42 103.82
~~104.69~~ 4.48

1.70 109.12
~~109.59~~ 7.00

~~99.01~~
~~99.78~~

~~99.34~~
~~99.81~~

~~102.12~~
~~102.59~~

Pres. Ditch

4467
875 - 93.49

4571
11.73 - 94.03

4623
10.32 - 93.50

49451
9.20 - 94.62

8" Tile at sta. approx 52+00
El. Flow line
10.68 - 98.44

	109.12	
	109.30	
2.97	106.50	106.15
	106.97	106.62
		.35

		102.20
4.30	110.52	102.67
	110.99	8.32

4.23	106.29	BM check
	106.76	at 62102

Pres Ditch

58+44 - 95.48
11.02

60+69
11.12 - 95.38

62+02
10.45 - 96.05

5" Tile at 61+40 N. side
El. 11.84 - 98.68

BM check from sta 220+80
to 258+00 to 291+00

	-	+	B. M.	Station
			119.19	220+80 BM
	120.09	5.90		
3.87			116.22	
	119.14	2.92		
3.25			115.89	
	120.33	4.44		
5.10			115.23	
	120.64	5.41		
1.25			119.39	
	123.34	3.95		
4.15			119.19	check at sta 258+00.
	123.34	4.15		
2.53			120.81	
	127.71	6.90		
4.47			123.24	
	128.24	5.00		
8.42			119.82	
	124.83	5.01		
3.23			121.60	
	126.88	5.28		
5.16			121.72	check at 291+00

-	+	+	BM
			121.72
	128.62	6.90	
1.18			127.44
	133.17	5.73	
5.63			127.54
	131.69	4.15	
4.74			126.95
	130.01	3.06	
4.02			125.99
	128.56	2.57	
4.50			124.06
	129.81	5.75	
6.30			123.51
	125.31	1.80	
8.14			117.17
	119.87	2.70	
4.50			115.37
	120.21	4.84	
1.02			119.19
	121.15	1.96	
4.45			116.70

Sta 2010

-	π	+	BM	
			116.70	Stat Sta Heaters, Co
	119.97	3.27		
4.34			115.63	
	119.36	3.73		
4.52			114.84	
	121.37	6.53		
3.25			118.12	
	122.42	4.30		
8.68			113.74	
	117.54	3.80		
6.17			111.37	Temp BM
	113.73	2.36		
5.52			108.21	
	113.92	5.71		
3.45			110.47	
	114.09	3.62		
3.12			110.97	

- π + BM
 106.73 .47
 106.26 at sta 62+02

Sta. 63+0

63+18 Flowline of tile 8.16 ~~98.57~~

64+0

65+0

65+59 Fl. L. tile 7.70 - 99.03

65+20 " " " 7.90 ~~98.83~~

65+69

66+0

2.05

109.21 4.53

104.68

BM on End
of SW wing
of Popash
in Baralati

66+44 Fl. Line tile 8.60/100.61

67+0

Top of 6d. sh.

		3'	12'	16'	21'	41'
405	427	423	10.30	10.73	10.22	57.9
102.68	102.46	102.50	96.43	96.00	96.51	100.95

		12'	23'	27'	34'	49'	54'
198	239	5.00	10.18	10.65	10.12	2.94	1.03
104.75	104.34	101.73	96.55	96.08	96.61	103.79	105.70

		6	25'	30'	37'	56'
59	135	2.44	9.48	10.30	10.38	3.8
103.5	105.38	104.29	97.25	96.43	96.35	106.35

		18	26	29'	36'	52'
303	320	10.05	10.85	9.90	5.65	7.0
101.70	100.53	96.68	95.89	96.83	101.08	106.03
		27'	37'	42'		63'
215	265	9.98	10.23	9.40		4.00
104.58	104.09	97.25	96.50	97.33		102.73

		6'	10'	18'	33'	48'
763	8.12	12.05	12.90	11.95	7.53	4.25
101.58	106.09	97.16	96.31	97.26	101.68	104.96

— π + B.M.

109.21

67+54

68+0

68+31 Fl. line of tile 10.80. 98.91

69+0

69+38

70+0

71+0

366

105.55

109.15 360

71+51 Fl. line of tile 990 99.25

72+0

Top 9k 6dat 9k

⊕

		20'	22'	33'	60'
3.73	4.15	12.00	12.70	12.05	4.15
105.48	105.06	97.21	96.51	97.16	105.06

		18'	26'	30'	41'	53'
7.46	7.85	12.15	12.96	11.93	8.80	3.45
101.75	101.36	97.06	96.76	97.22	100.41	105.76

		21'	31'	35'	55'
7.04	7.33	11.98	12.65	11.95	3.90
102.17	101.88	97.23	96.56	97.26	105.81

		28'	30'	33'	49'
5.32	5.64	12.03	12.41	12.00	6.65
103.88	103.57	97.18	96.80	97.21	102.56

		12'	14'	25'	59'
8.93	9.19	12.05	12.15	12.02	3.77
100.28	100.02	97.16	97.06	97.19	105.44

		18'	25'	35'	42'	61'
3.66	4.12	11.95	12.50	11.55	7.95	2.59
105.55	105.09	97.26	96.71	97.26	101.26	106.62

		19'	30'	33'	59'
4.35	4.77	11.93	12.45	11.73	3.37
104.80	105.38	97.22	96.70	97.42	105.78

— π + BM

72+94
109.15

73+0

74+0

75+00

75+26
4.00 105.15
107.90 8.75

76+0

77+0

77+70 Flowline

78+0

79+0

Top of 60' of 5' ϵ

452 483 24' 38' 34' 60'
104.63 104.32 11.75 12.95 11.50 1.65
97.40 96.70 97.25 107.50

753 789 18' 28' 32' 54'
101.56 101.26 11.80 12.70 11.90 7.3
97.35 96.95 97.25 108.42

370 421 17' 26' 28' 53'
105.45 104.94 11.89 12.97 12.00 2.10
97.26 96.68 97.15 107.05

405 440 12' 16' 18' 39' 56'
105.10 104.75 11.55 12.34 11.70 6.68 1.10
97.60 96.87 97.45 102.47 108.95

400 423 18' 21' 25' 40' 54'
105.15 104.92 11.62 12.35 11.84 5.83 3.9
97.53 96.80 97.31 103.32 108.76

400 455 18' 20' 21' 55'
103.90 103.35 10.50 10.73 10.60 1.90
97.40 97.17 97.30 106.00

282 327 16' 24' 26' 36' 45'
105.08 104.63 10.60 11.10 10.50 4.58 1.23
97.30 96.80 97.40 103.32 106.67

425 475 10' 16' 21' 31'
103.65 103.15 10.12 11.00 10.30 1.08
97.78 96.70 97.60 106.82

185 233 19' 25' 26' 36' 44'
106.05 105.57 10.45 11.30 10.47 5.08 1.23
97.45 96.70 97.43 102.82 106.97

- π + B.M.
107.90

80+0

80+12 Flowline of tile 7.23 10067

81+0

3.10

104.80

108.95 4.15

82+0

83+0

83+78

84+0

85+0

86+0

86+0 Fl. line tile 6.55 10240

Top side 6 ft. side \$

		26'	28'	30'	47'
313	3.56	10.31	10.55	10.44	3.58
104.27	104.34	97.59	97.35	97.46	104.32

		20'	24'	26'	37'	47'
310	3.65	9.83	10.40	9.94	5.40	1.80
104.80	104.25	98.07	97.50	97.26	102.50	106.10

		14'	17'	25'	48'
360	4.13	10.50	11.85	10.55	3.35
105.35	104.82	98.45	97.10	98.40	108.60

		13'	20'	23'	43'
375	4.33	10.63	11.65	10.62	9.5
105.20	104.62	98.32	97.30	98.33	108.00

		12'	20'	22'	50'
435	4.93	10.92	11.55	10.52	3.02
104.40	104.02	98.03	97.40	98.43	105.93

		16'	15'	20'	40'
408	4.55	10.66	12.15	10.49	2.91
104.87	104.40	98.29	96.80	98.46	106.04

		14'	16'	21'	45'
503	5.49	10.57	11.21	10.60	1.89
103.92	103.46	98.38	97.74	98.35	102.06

		12'	16'	19'	46'
550	5.90	10.67	10.65	10.40	1.50
103.45	103.05	98.28	98.30	98.55	107.45

	—	π	+	BM
	5.50			103.45

	110.33	6.88		
--	--------	------	--	--

87+0

86+86 Flowline of tile 9.60 100.73

87+89

88+0

89+0

89+86

90+0

91+0

Total 6d + 51k

±

		18'	20'	29'	50'
552	5.80	11.40	11.85	12.00	4.80
104.81	104.53	98.93	98.48	98.33	105.53

		17'	22'	25'	38
312	3.55	11.50	12.70	11.48	4.30
107.15	106.78	98.83	97.63	98.85	106.93

		18'	26	29'	42
230	2.95	11.80	12.70	11.50	4.20
106.03	107.39	98.53	97.63	98.83	106.13

		10'	16	22'	31'
345	4.00	12.05	12.80	11.65	2.95
106.88	106.33	98.28	97.53	98.68	107.38

		10'	13'	20	31
394	4.45	11.90	12.75	11.63	4.80
106.39	105.88	98.43	97.58	98.70	105.53

		10	17	19'	28
403	4.52	11.55	12.80	11.63	4.73
106.30	105.81	98.78	97.53	98.70	105.60

		10	13'	17'	34'
458	5.10	12.15	12.85	11.49	3.60
106.75	105.23	98.18	97.48	98.84	106.73

— π + B.M.
110.33

91+88

92+34 Fl. Line of tile 8.80 - 101.53

93+0

4.50

105.83

109.35 3.52

94+0

94+59 Fl. Line of Tile 8.30 101.05

95+0

96+0

96+25 Flow line 8.66 100.69

96+30 Flow line = 7.15 102.20

10' 16' 20' 36'

395	441	11.12	11.85	110.85	444
106.38	105.92	99.21	98.48	99.48	105.89

9' 12' 18' 31'

450	495	11.35	12.30	113.2	470
105.83	105.38	98.98	98.03	98.95	105.63

10' 12' 20' 30' 39'

440	495	10.35	11.55	104.3	455	210
104.95	104.40	99.00	97.80	98.92	104.80	107.25

14' 19' 27' 38'

275	321	10.23	11.62	10.20	410
106.60	106.14	99.12	97.73	99.15	105.25

11' 15' 18' 31'

360	416	10.70	11.10	10.53	4.00
105.75	105.19	98.65	98.25	98.82	105.35

	-	+	BM
		109.35	
97+0			
	4.50		104.95
* 96+42		110.75	590
* 97+0			
98+0			
98+30	Fl. Line of tile		9.30-101.45
99+0			
100+0			
	7.00		103.75
101+0		111.35	7.60
100+97			

Top Sta		6d H Sta		E	
794	8.40	97.5	8	11	24 32
101.41	100.95	99.60	97.78	99.55	5.15 215 104.20 107.20
590	6.38	11.50	14	13	31 41
104.85	104.35	99.25	98.75	99.32	6.18 3.55 104.57 107.20
435	4.72	12.50	15	18	27 38
106.40	106.03	99.45	98.25	99.20	5.58 3.00 105.17 107.75
497	4.50	11.42	14	20	34
106.68	106.25	99.33	98.00	99.47	3.56 107.19
352		17	28	28	37
107.23	9.00	11.04	11.52	10.94	4.23 106.52
354	3.75	11.03	17	23	34
107.21	107.00	99.72	99.58	99.82	4.19 106.56
329	3.66	11.50	27	32	36 40
108.06	107.69	99.85	99.70	100.55	5.15 106.20

	-	π	+	BM
		111.35		
	3.28			108.07
		113.27	5.20	
101+48		W	10.90	102.37
		E	11.80	102.47
101+48		W	11.05	102.22
		E	12.28	100.99
	2.49			110.80
				102.78
		111.82	1.02	

102+0

400

5.92

10590

111.15 5.25

103+0

103+49

104+0

Topstik Gdatstik

€

	15'	22'	26'	37'
	3.61	4.02	11.37	12.50
	108.21	107.80	100.45	99.32
				100.53
				107.54

	7'	12'	17'	32'	42'
	5.25	5.84	10.55	11.64	10.80
	105.90	105.31	100.60	99.51	100.35
					104.42
					107.26

	15'	21'	26'	41'
	4.33	4.72	11.08	12.17
	106.82	106.43	100.07	98.98
				100.55
				107.72

	17'	22'	28'	35'	39'
	3.91	4.38	10.80	11.23	10.60
	107.24	106.77	100.35	99.92	100.55
					104.43
					108.03

-	+	BM
	111.15	
3.35		107.80
	111.90	4.10

105+0

106+0

106+63

106+75 tile E1 9.87 102.03

107+0

108+0

4.95

110.30 3.35

106.95

105+0 106+0 106+63 106+75 107+0 108+0

4.10	4.50	13'	16'	21'	31'
107.80	107.00	11.71	12.00	12.00	3.77
		100.19	99.90	99.90	108.13

3.49	4.33	14'	17'	22'	34'
108.41	107.57	11.80	12.47	11.33	4.93
		100.10	99.43	100.55	106.97

3.43	3.90	10'	15'	19'	23'	44'
108.47	108.00	7.20	11.62	12.12	11.50	4.99
		104.70	100.22	99.78	100.40	106.91

3.92	4.54	11'	15'	21'	38'
108.08	107.36	11.55	12.08	11.43	5.02
		100.35	99.82	100.47	106.88

4.00	4.80	9'	13'	17'	25'	33'
107.90	107.10	12.25	12.14	11.50	7.85	4.95
		99.65	99.76	100.40	104.05	106.95

— π + BM
110.30

108+53

100.42

108+58 tile El. approx 6" above waterline

109+00

110+00

110+60 tile El. — 910 - 101.20

2.54

107.76

111.91 415

111+0

111+29

111+29 tile El. 101.28 101.63

112+0

3.62

108.29

110.67 2.38

100.50

X

		19'	17'	20'	30'	40'
335	493	9.97	10.38	9.84	4.23	1.63
106.95	105.37	100.33	99.92	100.46	106.07	108.67

		9'	7.5'	19'	22'	30'	40'
300	360	6.60	2.68	10.46	9.82	4.64	1.73
107.39	106.79	105.61	106.62	99.84	100.42	105.66	108.57

		4'	13'	15'	17'	25'	35'
240	325	4.34	9.90	10.26	9.73	7.00	4.15
107.90	107.05	105.96	100.40	100.04	100.57	103.30	106.15

		6'	16'	18'	22'	31'	41'
415	471	6.55	10.92	11.72	11.00	6.50	4.52
107.76	107.20	105.36	100.77	100.19	100.91	103.71	107.39
		12'	21'	25'	29'	35'	45'
399	430	6.98	11.09	11.72	10.96	7.03	4.13
108.12	107.61	104.93	100.83	100.19	100.95	104.88	107.73

		12'	19'	20'	33'
362	414	11.15	11.68	10.93	4.00
108.23	107.77	100.76	100.23	100.98	107.91

— π + BM
110.67

113+06

		18'	22'	26'	38'
233	274	1004	1031	960	310
107.33	107.33	10063	10026	101.07	10757

114+00

		5'	11'	14'	17'	20'	31'
257	303	370	390	1012	1004	980	310
107.0	107.64	104.97	100.77	100.55	10063	101.87	107.57

115+00

		5'	11.5'	17'	20'	30'
264	328	432	956	1023	970	341
108.03	107.99	106.35	104.11	100.74	101.97	107.26

116+00

				13'	16'	19'	30'
270	355	363		1003	980	960	262
108.87	107.12	101.04		10064	100.97	102.07	108.09

117+00

		12'	14'	17'	22'	32'
325	385	940	973	255	208	310
107.42	106.82	100.27	100.74	101.12	102.08	107.57

118+00

~~2.50~~

3.40

107.27

111.79 452

118+00

		10'	17'	20'	24'	32'
452	520	840	1006	1088	1023	362
107.7	106.59	103.89	101.73	101.41	101.56	108.17

118+61

		11'	17'	18'	21'	25'	36'	49'
373	414	679	1018	1037	995	890	563	321
108.06	107.65	105.00	101.61	101.41	102.89	103.87	106.16	108.48

119+00

		8'	11'	14'	17'	25'	37'
343	410	783	970	1013	982	680	370
108.36	107.69	104.91	102.09	101.66	102.97	105.99	108.07

2.16

109.63

116.86 7.23

5.62

111.24

	-	+	BM
			110.97
	112.55	1.58	

120+22			
	5.45		107.05
	110.63	3.58	

* = 121+0
123+0

124+0			
	3.08		107.55
	110.97	3.42	

125+0

126+0			
	4.76		106.21
	109.64	3.43	

127+0

127+15 til c El. 7.62 - 102.02

20 30 32'

6.15	6.65	11.77	12.59	11.79
106.40	106.90	100.78	100.05	101.76

20' 26' 32' 38'

3.58	4.03	9.62	10.65	9.50	3.83
107.25	106.60	101.01	99.98	101.13	106.80

16' 21' 25' 32'

3.23	3.95	9.74	10.42	9.50	5.76
107.34	106.68	100.89	100.21	101.13	104.87

16' 21' 27' 36'

3.42	3.90	9.90	10.90	9.78	5.95
107.55	107.07	101.07	100.07	111.19	105.02

17' 18' 21' 26' 35'

3.92	4.60	6.70	9.85	10.65	9.85	6.53
107.65	106.37	104.27	101.12	100.22	101.12	109.24

17' 21' 24' 26' 34'

3.43	3.85	6.94	8.44	8.84	8.36	4.30
106.21	105.77	102.70	101.20	100.80	101.28	105.31

	-	+	B.M.
		109.64	
	2.36		107.28
128+0		110.26	2.98
128+55			
	2.81		107.45
129+0		111.17	3.72
130+0			
	4.04		107.13
130+56		109.66	2.53
131+0			
132+00			
	1.93		107.73
133+0		110.87	3.14

14 1/2
6 1/2

		16'	21'	25'	30'	39'
2.98	3.63	7.55	8.92	9.71	8.43	4.72
101.28	106.63	102.71	101.34	100.55	101.83	105.54
		15'	18'	21'	37'	
3.40	3.96	8.93	9.35	9.10	4.02	
106.86	106.30	101.33	100.91	101.16	106.24	
		17'	20'	24'	32'	
3.72	4.30	10.05	10.60	9.93	4.73	
107.35	106.87	101.12	100.57	101.29	106.44	
		12'	17'	20	35'	
4.00	4.72	9.88	10.53	9.80	4.09	
107.17	106.45	101.29	100.64	101.37	107.08	
		18	21	24'	39'	
2.53	3.05	8.35	9.85	8.37	2.63	
107.13	106.61	101.31	99.81	101.29	107.08	
		15'	19'	22'	37'	
2.32	2.92	8.30	9.12	8.41	2.50	
107.34	106.74	101.36	100.54	101.25	107.16	
		6'	13	17'	20'	32'
1.64	2.18	3.71	8.53	8.55	8.48	2.10
108.02	107.48	105.95	101.13	101.11	101.18	107.56
		13'	19'	25'	24'	38'
3.14	3.63	5.42	9.70	10.20	9.63	3.62
107.73	107.24	105.45	101.17	100.67	101.24	107.25

	-	π	+	BM
		110.87		
134+0				
	4.28			106.59

134+61		111.66	4.67	
--------	--	--------	------	--

134+80	file El.	9.60	102.06
--------	----------	------	--------

135+00			
--------	--	--	--

135+25	file El.	8.82	102.84
--------	----------	------	--------

136+00			
--------	--	--	--

137+00			
--------	--	--	--

137-59			
--------	--	--	--

138+0			
-------	--	--	--

138+08	file E	7.85	103.81
	3.17		108.49
	110.59	2.10	

		10'	16'	21'	24'	36'
2.97	3.54	5.80	9.60	9.85	9.28	4.16
107.90	107.33	105.07	101.27	101.02	101.59	106.71

		13'	16'	19'	47'
4.67	5.08	10.00	10.30	9.75	4.43
106.99	106.58	101.66	101.36	101.91	107.23

		5'	9'	18'	22'	27'	32'
4.44	5.20	7.02	9.69	10.53	9.98	7.95	4.52
107.23	106.46	104.64	101.97	101.13	101.68	104.71	107.14

		8'	12'	16'	26'
3.82	3.80	9.88	10.45	10.09	3.53
108.14	107.86	101.78	101.21	101.67	108.13

		12'	14'	18'	27'
2.90	3.53	9.63	10.58	9.92	4.80
108.76	108.13	102.03	101.08	101.74	106.86

		9'	14'	19'	27'
3.52	3.94	9.19	10.00	9.70	4.50
108.14	107.72	102.47	101.66	101.96	107.16

		7'	12'	18'	26'
3.82	4.32	10.05	10.28	9.33	3.48
107.84	107.34	101.61	101.38	102.33	108.18

138+79 tile El. 110.59 + BM
139+0 7.00 103.59

140+0

141+0

141+53

141+74 tile El. 7.29 103.30

142+00

143+0

143+0 tile El. 6.15 104.44

143+84

143+84 tile El. 7.32 103.27

145+0

Bridge 2.60

107.99

BM on top
Conc. M. in
Sta. 145+

113.09 5.10

145+30 El. tile 11.20

4.10

108.9

near Smith
Farm
Bridge

12' 17' 25'
240 260 84.2 9.00 8.10 2.50
108.47 107.97 102.27 101.59 102.47 108.09

6' 11' 17' 28' 25'
255 320 83.0 9.30 8.30 5.20 2.53
108.69 107.47 102.69 101.29 102.29 105.59 108.06

5' 11' 17' 22' 25'
280 325 7.66 8.75 7.80 4.13 3.15
107.99 107.34 102.93 101.24 102.79 106.40 107.44

6' 12' 19' 24'
214 247 8.20 8.33 2.78 3.15
108.46 108.12 102.39 102.26 102.81 107.44

5' 8' 16' 22'
343 305 7.60 9.00 8.00 3.45
117.16 106.64 102.99 101.59 102.59 107.14

8' 13' 18' 28'
223 280 8.48 8.95 7.87 3.42
108.36 107.69 102.11 101.64 102.72 107.17

11' 16' 31' 31'
195 2.23 8.20 8.72 2.50 2.95
108.64 108.36 102.39 101.87 102.09 107.69

8' 14' 20' 30'
205 8.52 8.70 7.03 2.55
108.54 107.2 101.89 103.56 106.04
102.87

- π + BM

146+0

113.09

147+0

147+59 file El. 8.90 104.19

148+0

149+0

149+74 file El. 8.65 104.44

150+0

150+30

151+0

4.00

109.09

112.19 3.10

152+0

152+15 file El. 788 104.31

Top of
cut slope

#

530	5.75	10.33	10.30	10.35	23
107.99	107.34	102.76	102.79	102.74	107.89

435	4.83	10.35	10.20	10.90	27
108.79	108.26	102.74	102.39	102.19	107.46

333	3.54	10.47	10.32	10.12	25
109.76	109.15	102.62	102.77	102.87	108.21

362	4.15	10.23	10.73	10.58	24
109.47	108.94	102.86	102.36	102.11	108.19

379	4.33	2.93	10.00	9.95	10.30	27
109.21	108.76	105.26	103.09	102.14	102.79	108.14

310	4.08	10.41	10.60	10.22	23
109.47	109.01	102.68	102.49	102.87	107.27

4.20	4.60	10.40	10.40	10.20	24
108.89	108.49	102.69	102.69	102.89	107.89

3.10	3.40	9.05	9.88	9.24	22
109.09	108.79	103.04	102.31	102.95	108.65

	-	+	BM
		112.19	
152+0	2.95		109.24
		113.20	3.96
153+0			
153+16			
154+0			
154+46	file E1	9.15	104.05
154+68	E1 file	9.45	103.75
155+0			
	3.84		109.36
		112.60	3.24
156+0			
	4.12		108.48
		111.70	3.22

4.35	5.00	10.12	10.55	9.98	4.33
108.95	108.20	103.08	102.85	103.22	108.87
4.33	4.85	10.20	10.55	10.04	3.24
108.97	108.45	103.00	102.65	103.16	109.36
4.20	4.85	10.12	10.38	10.00	4.18
109.00	108.35	103.08	102.82	103.20	107.27
4.45	5.03	9.95	10.50	10.05	4.78
108.75	107.17	102.20	102.70	103.15	108.42
3.88	4.50	9.93	10.00	9.30	3.40
108.92	108.10	102.77	102.60	102.80	109.20

— π + BM

157+0

111.70

157+80 tile E/l. 7.70 104.30

3.58

108.12

112.34 4.22

158+0

3.71

108.63

112.52 3.89

159+0

4.18

108.34

112.12 3.78

160+0

3.65

108.47

112.80 4.33

160+72 tile E/l. 8.53 104.27

161+00

4.00

108.80

BM on Pa
Nail Rod

2.12 2.90 10' 15' 20' 25'
158 108.80 102.94 102.80 103.45 108.28
8.76 8.90 8.35 3.42

3.08 3.85 10' 14' 18' 26'
109.26 108.49 102.70 102.94 102.61 108.69
9.64 9.40 9.23 3.65

3.74 4.25 9' 12' 15' 26'
108.78 108.27 103.49 102.82 102.97 108.73
9.03 9.70 9.55 3.79

2.48 3.08 16' 20' 25' 29' 32'
109.64 109.04 103.66 103.22 103.42 105.37 108.09
8.46 8.90 8.70 6.75 4.03

3.03 3.84 12' 16' 20' 30'
109.77 108.96 103.19 103.06 103.58 109.69
5.61 5.74 9.22 3.11

- π + BM
108.80

BM on P.S.
Tree at 100'

112.43 3.63

162+0

163+0

2.95

109.48

113.39 3.91

163+72

164+10 file El. 8.88 104.51

4.40

108.99

113.42 4.43

165+0

166+0

4.04

109.38

113.74 4.36

166+50 El. file 8.25 105.49

282 3.58 9.10 14' 18' 22' 32'
107.61 108.85 103.33 9.66 8.85 2.53
102.97 103.58 109.90

2.95 3.70 5.05 11' 14' 18' 20' 30'
109.38 108.73 102.38 9.86 9.20 4.40 2.48
102.58 103.23 108.05 109.45

4.00 4.38 18' 21' 23' 26' 32'
109.39 109.01 102.20 106.0 10.11 6.69 4.03
103.19 102.79 103.28 106.70 109.36

3.58 4.33 14' 17' 19' 25' 29'
109.94 109.09 102.74 102.72 103.29 108.00 110.04
102.72

3.22 4.00 15' 19' 21' 23' 30'
110.70 109.42 105.22 108.20 103.17 103.62 110.02
102.5

— π + BM
 113.74

167+0

168+0

3.35

110.39

112.94 2.55

169+0

170+0

171+0

3.25

109.69

113.49 3.80

172+0

172+59 El. tile 7.22
 106.27

7.68

105.81

114.51 8.70

172+51

9' 14' 16' 19' 28'
 331 3.85 6.44 10.78 10.75 10.63 3.95
 109.89 107.30 102.96 102.97 103.11 109.79

13' 17' 19' 24' 36'
 335 4.10 10.88 10.52 10.76 6.25 3.20
 103.9 109.64 102.86 103.22 102.98 106.79 110.54

16' 18' 20' 22' 28' 39'
 234 3.03 7.95 9.15 9.30 9.52 5.15 3.20
 106.0 109.91 105.01 103.89 103.64 103.42 107.89 109.64

16' 26' 28' 30' 42'
 278 3.54 7.90 8.93 9.43 9.05 3.52
 102.26 109.40 105.04 104.01 103.51 103.89 109.42

19' 25' 29' 29' 30' 33' 46' 59'
 325 3.91 5.35 7.90 9.00 9.27 9.05 7.95 5.03 3.50
 107.69 109.03 107.59 105.04 103.94 103.72 102.87 114.99 107.91 112.44

10' 18' 20' 23' 29' 72'
 350 4.20 6.45 9.20 9.25 9.25 7.45 5.22 6.0
 109.39 107.29 107.04 104.29 104.24 104.24 106.04 6.25 110.89
 107.24

12' 22' 24' 26' 32' 37'
 325 3.70 6.95 10.05 10.75 10.10 8.45 6.65
 111.26 110.81 107.66 104.46 104.36 104.41 106.06 107.86

— π + BM
114.51

173+0

174+0

174+47

175+0

176+0

177+0

177+66 El. tile 9.25 105.26

178+0

179+0

179+10 El. tile 2.32 107.19

4.10

115.03 4.62

180+0

110.41

101 31 50 45 4
420 530 235 10.20 1030 24 31
109.81 109.21 107.26 104.31 104.21 104.96 109.13

428 475 10.20 1040 10.23 4.72 260 44'
110.23 109.76 104.31 104.11 104.28 109.79 111.51

425 472 9.25 1042 1066 1053 5.00 2.62 38'
110.26 109.79 105.26 104.09 103.85 103.98 109.51 111.89

455 530 7.62 10.23 1064 10.15 5.32 3.35 42'
109.76 109.31 106.89 104.28 103.87 104.36 109.19 111.16

412 473 4.73 9.92 1044 9.70 4.92 2.72 40'
110.29 109.78 104.59 104.07 104.81 109.59 111.79

460 5.25 9.73 10.22 9.80 6.63 4.32 3.20 43'
110.71 109.26 104.78 104.39 104.61 107.98 109.99 111.31

530 5.95 9.30 10.05 9.00 5.62 3.03 38'
109.21 108.56 105.21 104.46 105.51 108.89 111.48

3.55 4.15 9.40 9.88 9.53 6.32 4.18 31'
110.96 110.36 105.11 104.63 104.98 106.19 110.33

3.62 4.12 6.48 4.52 9.33 4.00 2.21 40'
111.41 110.91 108.63 9.14 105.51 106.70 111.03 112.82
105.89

	-	π	+	BM
		115.03		

181+0

182+0

.05

116.48 1.35

115.13
114.98

183+0

ok 4/30/40

183+59 El. tile 9.45 107.03

183+59

184+0

4/30/40

184+50 El. of 4" tile 7.10

109.38

185+0

185+30

186+0

Top	Stk	E				
60	60					

323	3.80	9	13'	18	26	45
111.83	111.23	9.55	8.80	9.28	6.00	3.70
		105.48	106.23	105.75	109.03	111.33

1.55	1.72	10	18	20'	22'	29'	39'
113.48	113.31	6.10	8.95	9.15	8.90	5.60	4.00
		108.93	106.08	105.88	106.13	109.43	111.03

4.59	5.02	8	16'	18'	19'	29
111.95	111.46	7.20	10.30	10.15	10.25	4.58
		109.28	106.18	106.33	106.23	111.90

4.27	4.95	11	16'	17'	21'	30
112.26	111.53	8.18	10.60	10.71	9.53	5.12
		108.30	106.88	105.77	106.95	111.36

4.50	5.10	6'	10'	14'	18	28'
111.98	111.38	7.83	9.86	10.00	9.58	4.80
		108.65	106.62	106.48	106.90	111.68

6.67	7.16	6'	10'	13'	31'	41'
109.81	108.32	9.28	9.50	9.60	4.63	2.64
		107.20	106.48	106.88	111.85	113.84

3.08	3.45	9'	12'	17'	26'	
113.40	113.03	9.25	9.58	9.60	4.60	
		107.23	106.90	106.88	111.88	

3.07	2.40	12'	14'		18'	32'
113.56	112.08	9.40	9.92		9.63	4.11
		107.08	106.56		106.85	112.37

— T + BM
 11648

186+62

4/30/40

186+90 El. Tile 8.35-109.13

187+0

188+0

4.15

112.33

116.98 4.65

189+0

189+13

190+0

191+0

191+48

192+0

192+78

Tile 10" 10'x10" C.M.P.

Not in

10' tile

Top of
 ed. 576

370	430	9.35	9.75	9.65	4.25
112.68	112.18	107.13	106.73	106.83	112.23

452	480	9.52	9.70	9.42	4.45
111.76	111.68	106.96	106.78	106.06	112.03

415	450	9.60	9.85	9.50	4.45
112.33	111.98	106.88	106.63	106.98	112.03

443	500	10.0	10.35	10.25	7.90	5.05
112.55	111.98	106.98	106.63	106.73	109.08	111.93

418	456	9.70	10.60	9.63	7.85	5.30
112.30	112.42	107.28	106.38	107.35	109.13	111.68

380	415	7.82	9.52	10.40	9.65	7.93	4.92
113.18	112.80	109.16	106.46	106.58	106.33	109.05	112.06

580	640	8.38	9.80	9.85	9.45	6.90	3.56
111.18	110.58	108.60	107.18	107.13	107.53	110.08	113.42

455	505	8.20	9.55	9.95	9.50	5.77
112.43	111.93	107.78	107.43	107.03	107.48	111.21

355	415	9.60	10.00	9.14	3.35	4.40
113.43	112.83	107.38	106.98	107.84	112.58	

383	430	9.30	9.60	9.25	4.15
113.15	112.68	107.68	107.38	107.73	112.93

— K + BM
116.98

194+0

195+0

195+50

El. Tile

2.55

196+0

196+0

197+0

198+0

199+0

200+0

201+0

202+0

202+00

8.20

2.55

O.K.A. 30/60

116.98

2.55

108.78

114.43

4.46

112.52

DM of
340
200

701.57L
601.57L

X

420	478	13'	15'	17'	31'
112.72	112.20	9.35	9.65	9.95	4.30
		107.63	107.33	107.93	112.68

3.50	4.50	12'	13'	14'	21'
113.08	112.48	8.80	9.40	8.95	4.40
		108.18	107.58	108.03	112.58

2.55	3.12	10'	15'	20'	27'
114.43	113.96	8.85	8.70	9.10	3.45
		108.33	108.28	107.88	113.53

3.43	3.90	10'	15'	20'	25'
113.55	113.08	8.60	9.40	8.70	3.95
		108.38	107.58	108.28	113.03

3.50	4.02	15'	21'	25'	36'
113.48	112.96	8.72	8.70	8.90	3.40
		108.26	108.08	108.08	113.58

4.13	4.60	8'	11'	15'	27'
112.85	112.38	8.75	9.20	8.78	2.73
		108.23	107.78	108.20	114.25

3.50	4.10	13'	10'	23'	32'
113.48	112.88	8.45	8.60	8.50	3.60
		108.53	108.38	108.48	113.38

3.10	3.65	13'	17'	21'	32'
113.88	113.33	8.42	8.45	8.60	3.33
		108.56	108.53	108.38	113.65

5.90	6.50	20'	22'	25'	41'
111.08	110.48	8.30	8.35	8.40	3.70
		108.68	108.63	108.58	113.28

8.85

108.13

- π + BM
 112.49 BM + 200.23
 117.69 5.20

203+0

470 5.05 8.90 9.05 8.85 3.80
 112.99 112.64 108.79 108.64 108.84 113.89

204+0

360 3.90 8.85 9.40 8.90 7.0 3.95
 114.09 113.79 108.84 108.29 108.79 110.59 113.74

205+0

357 4.00 9.00 9.60 9.05 4.30
 114.12 113.67 108.69 108.09 108.64 113.39

206+0

2/2
 4/30

3.48 3.73 6.75 9.00 5.12 8.88 2.8
 114.21 113.96 110.94 108.69 108.57 108.81 114.91

206+43 6" tile fr. so. fair cond. El. 7.75 + 10.94

207+0

3.62 4.00 9.46 8.98 8.80 4.13
 114.07 113.69 109.23 108.71 108.89 113.56

208+0

2.75 3.12 8.45 8.95 8.40 4.30
 115.94 114.57 109.24 108.74 109.29 113.39

209+0

3.18 3.95 8.25 8.60 8.50 4.00
 114.51 113.74 109.44 109.09 109.19 113.69

~~210+0~~

2/2
 4/30

209+15 6" tile fr. No fair. El. 7.28 - 110.41

~~210+0~~

355

114.14

— K + BM
114.14

118.24 4.60

210+0

211+0

212+0

212+59 6" tile fr. Do. fair cond El. 2/2

213+0

214+0

215+0

216+0

3.67

118.42 3.85

219+0

4.18 4.65 8.80 8.90 9.00 4.90
114.14 113.59 109.44 109.34 109.24 113.34

4.18 4.65 8.53 9.60 8.50 4.25
114.06 113.69 109.71 108.64 109.74 113.99

3.65 4.00 8.62 8.92 8.15 3.90
114.59 114.24 110.62 109.32 110.09 114.34

3.55 3.95 8.50 9.08 8.90 3.75
114.69 114.29 109.79 108.46 109.39 114.49

3.62 4.06 8.45 9.23 8.35 3.42
114.62 114.18 109.79 109.01 109.89 114.92

3.95 4.40 8.50 8.85 8.65 4.40
114.29 114.84 109.74 109.37 109.59 113.84

3.67 4.05 8.18 8.70 8.15 3.95
114.57 113.19 110.06 109.34 110.09 114.29

3.88 4.23 8.70 8.98 8.55 6.40 3.35
114.54 114.19 110.72 109.44 109.87 112.02 115.07

- + BM

118.42

218+0

OK 4/30

218+20 4" tile fr. West Fair road El. 6.70

219+0

220+0

220+44

220+80 tile El. 8.60 Montgomery Tile
4.23

221+0

221+38

222+0

223+0

3.78	4.23	12	14	15	30
114.04	114.19	8.31	8.49	8.35	3.50
		110.11	109.93	110.07	114.92

3.87	4.23	9	13	16	26
114.65	114.79	8.09	8.18	7.87	3.49
		110.83	110.84	110.55	115.02

3.35	3.68	11	19	15	18	28
110.07	114.74	8.30	8.70	8.70	7.20	3.83
		110.12	109.72	110.72	111.22	114.89

4.30	4.65	12	23	28	33
114.2	113.77	7.80	8.10	7.95	4.75
		110.62	110.82	110.47	113.67

2.90	4.15	9	12	15	25
114.32	114.27	7.85	8.20	7.90	4.35
		110.67	110.22	110.52	114.17

4.20	4.55	7	11	14	22
114.32	113.87	7.85	8.48	7.95	4.52
		110.57	109.84	110.47	113.90

3.70	4.10	6	10	14	21
114.72	114.32	7.85	8.35	7.70	4.00
		110.57	110.07	110.72	114.42

3.70	4.10	7	10	14	17
114.72	114.32	7.70	8.15	7.62	3.95
		110.72	110.27	110.80	114.57

	-	π	+	BM
		118.42		
224+0	3.45	77		114.97
		119.87	480	

225+0

226+0

227+0

10' x 15" CMP Extra

227+78

229+0

229+75 5" tile fr. So covered El. 124.7

230+0

~~231+0~~

4.60

115.87

231+0

231+70

4" tile fr. No bad. shape El.

111.54
8.00

3.45	3.80	7.90	8.00	7.55	3.95
114.97	114.62	110.52	110.42	110.97	114.47

4.52	4.90	8.82	9.00	8.90	5.55
115.25	114.87	110.95	110.77	110.87	114.22

4.60	4.90	9.03	9.40	8.90	5.40
115.17	114.87	110.74	110.37	110.87	114.87

4.84	5.22	8.80	9.23	8.60	5.40
114.93	114.55	110.97	110.54	111.17	114.37

4.12	4.43	8.82	9.60	8.96	4.62
115.65	115.34	110.94	110.17	110.81	115.15

3.92	4.33	8.56	9.65	8.68	4.65
115.85	115.44	111.21	110.12	111.09	115.12

4.12	4.57	8.56	9.38	8.95	4.54
115.65	115.20	111.21	110.89	110.82	115.23

4.35	4.73	8.37	9.55	8.20	4.65
115.17	115.79	111.15	109.97	111.32	114.87

— π $\frac{52}{52}$ + B.M.
 119.67
 52

233+0

233+0

234+0 6" x 10' C.M.P.E. extra

235+0

236+0

3.75 115.92
 $\frac{03}{120.18}$ 4.26

237+0

238+0

4/20

111.61

238+50 4" tile No. Side Badood El. 842

239+0

4/20

111.83

239+48 6" tile So Side Badshabo El. 815

240+0

E

437 4.80 8.25 8.95 8.55 20'
 113.13 114.72 111.27 110.57 110.97 115.38

3.85 4.28 8.43 8.60 11 21'
 115.67 115.24 111.09 110.92 111.27 115.02

3.25 3.58 8.45 8.65 11 22'
 116.27 115.94 111.07 110.87 110.82 115.83

3.37 3.80 8.40 8.80 13 24'
 116.15 115.72 111.12 110.72 110.92 115.97

3.75 4.20 7.95 8.18 18 28'
 115.77 115.32 111.57 111.34 112.87 115.50

4.00 4.40 8.38 9.20 15 23'
 116.03 115.60 111.65 110.83 111.55 115.68

4.40 4.73 8.60 9.43 14 22'
 115.63 115.30 111.43 110.60 111.90 115.69

4.25 4.60 8.48 9.72 11 21'
 115.78 115.43 111.65 111.31 111.58 116.47

4.35 4.80 8.85 9.00 13 21'
 115.68 115.23 111.18 111.03 111.43 116.53

— T₀₃ + BM
120.78 112.13
241+0 4" tile So. Side fair El. 7.90

OK 4/30
241+0
4.76 119.90 27
120.05 115.42 463

242+0

243+0

not in
243+53 6" tile No. Side fair El. 8.63 110.27

244+0

OK 4/30
244+85 5" tile No Side fair El. 8.18 111.72

245+0

OK 4/30
245+89 6" tile So Side under water, El. 8.00 111.90

246+0

247+0

476	5.35	8.89	9.30	8.65	4.8
115.27	114.68	111.15	110.73	111.38	115.85

330	4.36	6.25	9.00	8.15	3.60
116.09	115.54	113.65	110.90	111.75	116.30

335	3.85	8.23	8.85	7.70	3.55
116.65	116.05	111.67	111.05	112.20	116.45

431	4.81	8.54	8.70	8.33	3.20
115.59	115.09	111.36	111.20	111.57	116.70

382	4.20	8.64	8.50	8.63	4.05
116.08	115.70	111.26	111.40	111.27	115.85

378	4.20	8.21	8.44	8.62	3.80
116.12	115.70	111.69	111.46	111.28	116.10

332	3.83	8.28	8.38	7.85	3.35
116.58	116.07	111.62	111.52	112.05	116.55

- $\frac{116.00}{120.05}$ + BM.

247+35

MC 4/30

247+95 10" tile So. Side fair

112.18
El. 772

248+0

248+25

325

55

120.80 3.20

65 on Bridge
116.80 248+25

249+0

250+0

250+05 5" tile N. side under water El 88

251+0

252+0

253+0

254+0

335	372	8.00	8.45	8.24	325
116.85	116.18	111.90	111.95	111.66	116.65

4.25	4.82	8.25	8.35	8.15	4.10
115.65	115.08	111.65	111.55	111.75	115.80

5.20	5.80	8.15	8.05	8.40	4.45
115.35	114.75	112.40	111.50	112.15	116.10

4.20	4.95	8.80	9.32	8.35	4.00
116.35	115.60	112.75	111.23	112.20	116.55

3.50	4.45	7.83	8.68	7.98	4.08
117.05	116.10	112.72	111.87	112.57	116.97

2.94	3.52	8.22	8.40	8.10	3.45
117.81	117.03	112.33	112.15	112.45	117.10

2.73	3.48	7.95	8.30	7.90	3.15
117.82	117.07	112.60	112.25	112.55	117.43

2.85	3.25	8.10	8.40	8.40	3.50
117.70	117.52	112.45	112.15	111.75	117.05

— π 55 + BM
 120.79
 3.50 41 117.⁰⁵₂₀
 121.56 436

255+0

256+0

257+0

2.23

258+30 4" tile So. side fair cond. El. 115.32
 122.57 339 119.33 258+0

259+0

260+0

260+65

260+90 12" tile No. side fair El. 113.99
 8.58

261+0

261+0 6" tile No. side fair El. 114.57
 8.00

43' 9' 10' 13' 17' 23'
~~4.90~~ 4.90 8.55 8.33 8.45 6.10 4.28
 117.05 116.51 112.86 113.07 112.96 115.31 117.13

3.51 4.13 8.53 9.23 17' 25'
 118.90 117.28 113.88 112.18 9.00 3.50
 112.41 117.91

3.46 4.11 10' 15' 16' 23'
 118.45 117.30 7.80 8.90 8.21 4.20
 113.51 112.51 113.10 117.21

3.18 3.70 7' 14' 16' 25'
 119.39 119.87 113.87 113.47 113.84 118.51
 8.70 9.10 8.78 4.06

3.30 3.80 9' 10' 15' 21'
 119.21 118.77 113.82 113.89 114.34 117.74
 8.75 8.68 8.23 4.83

3.23 4.25 9' 12' 16' 23'
 118.84 118.32 114.72 114.72 114.74 117.96
 7.85 7.85 7.83 4.61

4.45 5.02 7' 10' 15' 28'
 118.12 117.55 114.46 114.04 114.63 117.50
 8.11 8.53 7.94 5.07

— π + BM
 122.57
 261+60 5" tile So. side underwater. El. 81.9

114.47

not in \nearrow

262+0

		9'	12'	15'	24'
285	340	8.20	8.55	8.75	3.70
119.72	119.17	114.37	114.02	113.82	118.87

263+0

		9'	12'	15'	24'
185	245	8.60	9.30	9.65	3.20
121.72	120.12	113.97	113.27	113.92	119.27

264+0

		7'	10'	13'	22'
315	370	8.50	8.80	8.50	3.75
119.42	118.87	114.07	113.77	114.07	118.82

330

119.27

~~265~~

123.17 3.90

265+00

		10'	18'	12'	21'
390	445	9.15	8.95	8.85	4.25
119.27	118.72	114.02	114.22	114.32	118.92

266+0

		8'	10'	16'	22'
450	405	8.70	9.15	8.80	4.12
112.67	119.12	114.47	114.02	114.37	119.05

267+0

		7'	9'	13'	22'
325	373	8.12	8.20	8.33	4.17
119.92	119.44	115.05	114.27	114.84	119.00

268+0

		8'	11'	18'	34'
235	290	8.52	8.65	8.70	3.40
120.82	120.27	114.65	114.52	114.47	119.68

269+0

		9'	12'	14'	23'
312	272	8.65	8.62	8.70	3.00
121.05	120.45	114.52	114.55	114.47	120.17

270+0

		8'	11'	18'	23'
252	310	8.32	8.63	8.18	3.25
120.65	120.07	114.85	114.54	114.99	119.92

271+0

		8'	10'	12'	21'
320	370	8.25	8.60	8.70	4.40
117.97	120.47	114.92	114.57	115.07	118.77

— π + BM
 123.17 115.37
 271+15 4" tile So Side fair El. 7.80
 OK 4/30/40

271+59

115.17
 271+59 5" tile West side El. 8.00

272+0 OK 4/30/40

273+0

274+0

274+28

3.95

119.22

125.02 580

275+0

276+0

277+0

3/0	3.65	7.80	8.15	8.10	21'
120.07	119.52	115.27	115.02	115.07	119.77

3.20	3.70	7.10	8.40	13'	28'
119.97	119.47	114.07	114.77	115.17	119.07

3.20	3.80	7.90	7.95	11'	16
119.97	119.37	115.27	115.22	115.25	118.97

3.05	3.80	7.90	8.18	10'	20'
120.12	119.37	116.27	114.99	115.37	119.37

3.42	4.00	7.25	8.30	17'	25'
119.75	119.17	115.92	114.87	115.37	119.72

5.20	5.70	9.45	9.85	11'	19'
120.82	119.32	115.57	115.17	115.47	119.42

4.60	5.25	9.50	9.95	10'	20
120.42	119.77	115.52	115.07	115.80	119.77

4.18	4.67	9.73	10.00	13'	21
120.84	120.45	115.29	115.02	115.20	120.07

— π + B.M.

125.02

278+0

278+77

280+0

281+0

282+0

36"

282+15

B.S. at Obs Higgins

El. 10.00

4.80

120.22 "

124.12 3.90

10' 6"

283+0

283+64

5" tile 50 Side Bad cond El. 6.90

284+0

285+0

286+0

4.25	4.55	9.25	9.26	9.60	5.05
120.87	120.47	115.77	115.82	115.92	119.97

4.44	4.91	8.90	9.40	9.72	4.80
120.68	120.11	116.12	115.62	115.90	120.22

3.90	4.38	8.57	9.23	8.93	5.02
121.12	120.62	116.45	115.79	116.09	120.60

4.21	4.64	8.33	8.42	8.48	5.83
120.81	120.38	116.69	116.60	116.54	119.19

6.25	6.67	7.95	8.00	7.90	6.60
118.77	118.35	117.07	117.02	117.12	118.42

115.02

3.90	4.35	7.45	8.00	7.75	4.32
120.22	119.77	116.67	116.12	116.37	119.70

117.23

3.40	3.80	7.40	7.65	7.60	4.30
120.72	120.32	116.72	116.41	116.52	119.82

3.45	3.90	7.50	7.70	7.52	4.35
120.67	120.22	116.62	116.42	116.60	119.87

3.23	3.68	7.65	8.03	7.74	4.35
120.89	120.44	116.57	116.09	116.38	119.77

— π + BM

124.12

287+0

287+85 6" tile So Side fair El. 6.76

288+0

810 4/20/40

289+0

290+0

2.95

121.67
121.72

126.47 4.75

291+0

291+16 6" tile So Side
A Conc. Header. El. 8.40

292+0

293+0

294+0

295+0

		9'	11'		
3.09	3.52	7.36	7.51	13'	19'
121.03	120.60	116.76	116.61	7.26	3.64
				116.86	120.48

		12'	14'	15'	21'
2.60	3.15	6.40	6.80	6.72	3.50
121.52	120.97	117.72	117.32	117.40	120.62

		7'	9'	11'	15'
2.45	3.00	7.6	7.00	6.95	3.00
121.67	121.12	116.96	117.12	117.17	121.12

		7'	10'	12'	21'
2.30	2.75	6.00	6.45	6.30	2.65
121.82	121.37	118.12	117.67	117.82	121.47

		8'	10'	15'	20'
4.60	5.25	8.20	8.25	8.00	4.50
121.87	121.22	118.27	118.22	118.47	121.97

		6'	8'	11'	20'
3.65	4.15	8.00	8.30	8.20	4.40
122.82	122.32	118.47	118.17	118.27	122.07

		7'	9'	13'	22'
1.00	2.60	7.85	8.15	7.70	1.80
124.47	123.87	118.62	118.32	118.77	124.67

		7'	9'	10'	21'
2.25	2.80	8.10	8.45	8.40	1.50
124.22	123.67	118.37	118.02	118.07	124.97

		7'	9'	11'	22'
2.90	3.30	8.05	8.40	7.40	2.55
123.57	123.17	118.42	118.07	119.07	123.92

— π + BM

126.47

296+0

297+0

not there

297+12 6" tile So. Side Fair (Mud) El. 7.44

299+15 6" tile No. Side Mud covered El. 6.88

298+0

299+0

300+0

301+0

302+0

302+39

302+39 8" tile

5" tile West End

4.75

119.22
7.25
El. 5.00

119.47
El. 7.00
121.72

2.44 3.95 7.65 8.70 7.90 3.30
123.03 122.52 118.82 118.37 118.57 123.17

3.88 4.28 7.08 7.15 7.14 4.33
122.57 122.19 119.39 119.32 119.33 122.14

119.03

119.59

3.56 4.10 7.03 7.07 7.18 4.20
122.91 122.37 119.44 119.40 119.29 122.27

3.16 3.87 6.95 7.40 7.15 3.75
123.31 122.60 119.52 119.07 119.32 122.72

3.35 3.90 7.43 7.75 7.00 3.80
123.12 122.57 119.04 118.72 119.47 122.67

2.50 3.10 6.80 7.35 7.20 3.75
123.97 123.37 119.67 119.12 119.27 122.72

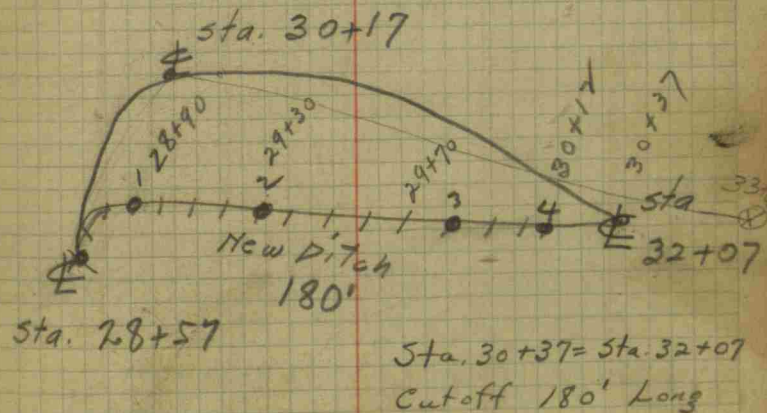
2.80 3.32 6.60 6.65 6.30 4.40
123.67 123.15 119.87 119.82 120.17 122.07

3.30 3.85 6.60 6.75 6.65 5.00
123.17 122.62 119.87 119.72 119.82 121.47

-	π	+	BM	
			96.36	
	104.72	8.36		
6.48			98.24	98.31

Sta 28+57	92.27			
	12.45			
28+90	15'		15'	
Stake # 1	N	stk	S	
	3.75	3.80	3.80	
29+30	100.97	100.92	100.92	
Stk # 2	5.12	5.00	5.32	
	99.60	99.72	99.40	
29+70				
Stk # 3	4.90	4.65	4.95	
	99.82	100.07	99.77	
Stk # 4	3.96	3.98	4.80	
30+12	100.76	100.74	99.92	
Sta 32+07	13.20			
	91.52			

Cut off in Barnett Ditch



Bridge at Sta. 62+02

Span - 2-14'-0"

Rise 8'-0"

63+18 From N 8" tile "C.M.P." - 10'-0" *OK*

65+59 From S 4" tile - metal pipe *OK* G.C.

65+20 " " 6" tile Good Cond. *OK*

66+18 Pope Bridge

24'-0" span

8'-0" rise

66+44 Fr. E 8" tile met. pipe 50' E of Ditch *OK*
Bad gully washed

68+31 Fr. N 5" tile G.C. C.M.P. *OK*

71+51 Fr. W 6" or 8" tile C.I. Pipe 27' fr. Ditch *OK*
needs ext.

77+70 Fr. N Bad wash 40' fr. Ditch *OK*

80+12 Fr. N 5" tile C.M.P. 24' fr. Ditch

86+0 Fr. S 6" tile 35' fr. Ditch
Bad wash

86+86 Fr. S 8" tile V.S.P. Fair Cond.

~~92+00 Fr. E 6" tile Bad Cond.~~

92+34 Fr. E 6" V.S.P. Good cond **Reset**

94+59 Fr. W 4" tile C.M.P. ✓ ok

96+25 Fr. W 4" or 5" tile C.M.P. ok

96+30 Fr. E 6" V.S.P. Good cond. ok

98+30 Fr. N 6" tile wash 12' C.M.P. ok

Sta. 101+08 28'-0" Con. Arch
7'-0" rise

101+08 10" tile along SRd Ditch fr. E.

101+08 8 " " " " " W

ok

ok

Reset ok

90+25 - 6" Tile
N.I.

ok

101+48 10" tile along N. Rd Ditch from E.
101+48 8" " " " " " " " W.

Extra
10'-8" CMP

106+75 6" tile from So. G.C. CMP ok

108+53 6" tile from No. fair condition Not In

110+60 10" tile fr. So Fair Cond. OK

809+50 - 8" T, 1c

new CMP.

111+29 8" tile fr. So V.S.P. Good Cond.

TAKE OUT OPL 4/30/40

Railroad bridge

12'-0" span

8'-0" rise

120+0 10" tile fr. No. washed 15' CMP. Not In

OK 4/30/40

127+15 7" tile fr. No. washed 25' CMP TO BE F.

134+80 5" tile from E. wash 12' CMP TO BE F.

135+25 5" tile from W 15' fr. & OK

138+08 6" tile fr. No. Fair cond. OK

138+79 6" V.S.P. Fr. So. G.C. OK

141+74 6" conc. Box Fr. So. Good cond. OK

143+0 6" wood box Fr. East Fair cond. OK

143+84 6" V.S.P. Fr. East. Good cond. OK

145+0 Bridge [I Beam-wood floor] (Near
30'-0" span Smith's
5'-0" rise Farm
Bridge)

145+30 18" tile in Conc. Headwall
fr. East

147+59 6" V.S.P. from E. Good cond. OK

149+74 6" V.S.P. fr. West " " OK

152+15 5" tile fr. East washed 15' CMP TAKE OUT ✓

154+46 4" tile fr. East wash 20' CMP OK

154+68 4" tile fr. West wash 15' CMP OK ✓

John C. McCord #10 306 - by 1919
Knowas Wells arm. of #3641

157+80 5" tile fr. East Bad cond. OK TBF

160+72 4" tile fr. East Bad Cond. OK

164+10 4" tile fr. West washed 20' OK TBF

166+50 5" tile fr. East washed 10' OK

172+59 5" tile fr. West washed 20' OK

177+66 6" tile fr. West fair cond. OK

179+10 5" tile fr. West washed 10' OK

182+0 Bridge at Dukes
25'-0" span.
5'-0" Rise

183+59 12" tile fr. East Good cond.

184+50 4" tile fr. So fair cond

186+90 6" tile fr. West fair cond 8'

195+50 8" tile from No washed 10'

196+75 6" tile fr. So fair cond.

201+85 15" tile fr. No washed badly
Blessing Ditch.

202+20 Bridge on Snyder Farm.
20'-0" span
4'-0" rise.

206+43

209+15

211+30 Bridge on Snyder Farm

212+59

26'-0" span
3'-6" rise

206+20

218+30 Bridge on Todd Farm.

30'-0" span
3'-6" rise

224+0 Bridge on Todd

20'-0" span
3'-0" rise

See Crosssection Page

227+25 Bridge

24'-0" span

4'-0" rise

229+7⁵₇₀

231+5⁰

234+9^x

248+25 Bridge on Norman

25'-0" span

4'-0" rise

258+0 Bridge on N+J Road

14'-0" span

5'-0" Rise

282+18 B.S. of Obie Higgins

3'-0" diam.

2'-0" mud.

279+0 1 Dead Galf - Stinks

291+0 Bridge on #39

15'-0" span

2'-0" rise

June 26, 1940

To whom it may concern:

The bill for

$$\begin{array}{r} 125 \\ .84 \\ 350 \\ \hline 559 \end{array}$$

$$\begin{array}{r} 10 \\ 6 \\ \hline 84 \end{array}$$

$$\begin{array}{r} 119.19 \\ + 415 \\ \hline 123.34 \\ - 253 \\ \hline 120.81 \\ + 690 \\ \hline 127.71 \\ - 447 \\ \hline 123.24 \\ + 5.00 \\ \hline 128.24 \\ - 8.42 \\ \hline 119.82 \\ + 5.01 \\ \hline 124.83 \\ - 323 \\ \hline 121.60 \\ + 5.28 \\ \hline 126.88 \\ 516 \\ \hline 121.72 \end{array}$$

$$\begin{array}{r} 114.19 \\ + 590 \\ \hline 12009 \\ - 387 \\ \hline 116.22 \\ + 292 \\ \hline 119.14 \\ - 325 \\ \hline 115.89 \\ + 444 \\ \hline 120.33 \\ - 510 \\ \hline 115.23 \\ + 5.41 \\ \hline 109.82 \\ 12064 \\ - 125 \\ \hline 119.39 \\ 395 \\ \hline 123.34 \\ - 4.15 \\ \hline 119.19 \end{array}$$

$$\begin{array}{r}
 11080 \\
 + 102 \\
 \hline
 11182 \\
 592 \\
 \hline
 10590 \\
 525 \\
 \hline
 11115 \\
 335 \\
 \hline
 10780 \\
 410 \\
 \hline
 11190 \\
 495 \\
 \hline
 10695 \\
 331 \\
 \hline
 11030 \\
 354 \\
 \hline
 10776 \\
 415 \\
 \hline
 11191 \\
 362 \\
 \hline
 10629 \\
 238 \\
 \hline
 11067
 \end{array}$$

$$\begin{array}{r}
 11135 \\
 328 \\
 \hline
 10807 \\
 520 \\
 \hline
 113127 \\
 249 \\
 \hline
 11023 \\
 450 \\
 \hline
 10783 \\
 352 \\
 \hline
 10935 \\
 11067 \\
 340 \\
 \hline
 10727 \\
 452 \\
 \hline
 11179 \\
 216 \\
 \hline
 10963 \\
 823 \\
 \hline
 11786 \\
 562 \\
 \hline
 11224 \\
 11097 \\
 \hline
 127
 \end{array}$$

11670	12351	10895
+ 327	+ 180	555
11997	12531	10341
- 434	- 814	121.72
11563	117.17	+ 690
+ 373	+ 270	128.62
11936	119.87	- 118
- 452	- 450	127.44
114.84	115.37	+ 573
+ 653	+ 484	13317
121.37	120.21	- 5.63
- 325	102	127.54
118.12	119.19	+ 415
+ 430	1.96	131.69
12.42	121.15	- 474
- 868	445	126.95
113.74	116.70	+ 306
+ 380	10345	130.01
11754	688	- 4.02
617	11033	125.99
111.37	11373	+ 257
	- 552	128.56
	10821	- 450
	+ 571	12406
	11392	+ 5.75
		129.81
		6.30
		129.51

mileage on Ditch

9/27 Thurs morn 2610
" eve 2636

9/28 Fri Morn 2659
Fri Noon 2651

5/1 Mon. morn 2794

Mon Aite 2833 Vickery 8/18/47

Thurs. A 3033

Thurs. nite

Tues. Mot N. May 2 - 2905

Fair + Warm.

202
141
10468
4633
10921

3607

10189

10935
450
10485
590

1561885

86+73

69+74

52+80

11075

700

10375

760

11135

10853

8673

2180

10673
-222
10468

10935
-1097
80
-17

12172
14917
1.55

10917
234
141
85

DISTANCES FROM CENTER OF ROADWAY FOR CROSS-SECTIONING.

ROADWAY 14 FEET WIDE. SIDE SLOPES 1 1/2 TO 1.

FOR SINGLE TRACK EMBANKMENT.

	0	.1	.2	.3	.4	.5	.6	.7	.8	.9	
0	7.0	7.2	7.3	7.5	7.6	7.8	7.9	8.1	8.2	8.4	0
1	8.5	8.7	8.8	9.0	9.1	9.3	9.4	9.6	9.7	9.9	1
2	10.0	10.2	10.3	10.5	10.6	10.8	10.9	11.1	11.2	11.4	2
3	11.5	11.7	11.8	12.0	12.1	12.3	12.4	12.6	12.7	12.9	3
4	13.0	13.2	13.3	13.5	13.6	13.8	13.9	14.1	14.2	14.4	4
5	14.5	14.7	14.8	15.0	15.1	15.3	15.4	15.6	15.7	15.9	5
6	16.0	16.2	16.3	16.5	16.6	16.8	16.9	17.1	17.2	17.4	6
7	17.5	17.7	17.8	18.0	18.1	18.3	18.4	18.6	18.7	18.9	7
8	19.0	19.2	19.3	19.5	19.6	19.8	19.9	20.1	20.2	20.4	8
9	20.5	20.7	20.8	21.0	21.1	21.3	21.4	21.6	21.7	21.9	9
10	22.0	22.2	22.3	22.5	22.6	22.8	22.9	23.1	23.2	23.4	10
11	23.5	23.7	23.8	24.0	24.1	24.3	24.4	24.6	24.7	24.9	11
12	25.0	25.2	25.3	25.5	25.6	25.8	25.9	26.1	26.2	26.4	12
13	26.5	26.7	26.8	27.0	27.1	27.3	27.4	27.6	27.7	27.9	13
14	28.0	28.2	28.3	28.5	28.6	28.8	28.9	29.1	29.2	29.4	14
15	29.5	29.7	29.8	30.0	30.1	30.3	30.4	30.6	30.7	30.9	15
16	31.0	31.2	31.3	31.5	31.6	31.8	31.9	32.1	32.2	32.4	16
17	32.5	32.7	32.8	33.0	33.1	33.3	33.4	33.6	33.7	33.9	17
18	34.0	34.2	34.3	34.5	34.6	34.8	34.9	35.1	35.2	35.4	18
19	35.5	35.7	35.8	36.0	36.1	36.3	36.4	36.6	36.7	36.9	19
20	37.0	37.2	37.3	37.5	37.6	37.8	37.9	38.1	38.2	38.4	20
21	38.5	38.7	38.8	39.0	39.1	39.3	39.4	39.6	39.7	39.9	21
22	40.0	40.2	40.3	40.5	40.6	40.8	40.9	41.1	41.2	41.4	22
23	41.5	41.7	41.8	42.0	42.1	42.3	42.4	42.6	42.7	42.9	23
24	43.0	43.2	43.3	43.5	43.6	43.8	43.9	44.1	44.2	44.4	24
25	44.5	44.7	44.8	45.0	45.1	45.3	45.4	45.6	45.7	45.9	25
26	46.0	46.2	46.3	46.5	46.6	46.8	46.9	47.1	47.2	47.4	26
27	47.5	47.7	47.8	48.0	48.1	48.3	48.4	48.6	48.7	48.9	27
28	49.0	49.2	49.3	49.5	49.6	49.8	49.9	50.1	50.2	50.4	28
29	50.5	50.7	50.8	51.0	51.1	51.3	51.4	51.6	51.7	51.9	29
30	52.0	52.2	52.3	52.5	52.6	52.8	52.9	53.1	53.2	53.4	30
31	53.5	53.7	53.8	54.0	54.1	54.3	54.4	54.6	54.7	54.9	31
32	55.0	55.2	55.3	55.5	55.6	55.8	55.9	56.1	56.2	56.4	32
33	56.5	56.7	56.8	57.0	57.1	57.3	57.4	57.6	57.7	57.9	33
34	58.0	58.2	58.3	58.5	58.6	58.8	58.9	59.1	59.2	59.4	34
35	59.5	59.7	59.8	60.0	60.1	60.3	60.4	60.6	60.7	60.9	35
36	61.0	61.2	61.3	61.5	61.6	61.8	61.9	62.1	62.2	62.4	36

Calculated by Julien A. Hall, M. Am. Soc. C. E.

MADE IN GERMANY.