

HOSPITAL

2 ND. FLOOR

MINING TRANSIT BOOK

320025

LEVEL BOOK
HOSPITAL INSPECTION
2ND FLOOR

Sept. 28, 1966

Temperature - 68°

First load poured at 3:00 P.M. & no
tests were made. 6 cu. yd.

Second load poured at 2:15 P.M. & no
tests were made. 3 cu. yd.

Third load poured at 2:45 P.M. -
two cylinder tests were made at
beginning of pour. 6 cu. yd.

Fourth load poured at 3:40 P.M.
No tests were made. 3 cu. yd.

Sept. 29, 1966 Temperature 60°

Concrete was poured today but
no tests were made. Poured in
pads on west end of present building.
Poured out 12:00 noon

October 4, 1966

Temperature 62°

1:05 P.M. — 2 cu. yds. — no tests
were made — Paved in road on west end
of present building.

October 10, 1966

Temperature 62°

1st test - 3:00 P.M. - 6.75 - 6 cu. yd.
Poured on east end, stairway #3 1st load

2nd load - poured at 3:30 - 6 cu. yd.

No tests were made -

3rd load poured at - 3:50 - 2 cu. yd.

No tests were made

Thurs. - Oct. 29, 1966 Temperature 39°

Made two cylinder tests at 9:00 A.M. -
from Ready Mix truck

Made two cylinder tests at 9:15 A.M. -
from Mc Mahan

Made air test - 7.5 - 10:50 A.M. - off of
Dawville Ready Mix truck.

Made air test - 4.7 - 11:00 A.M. - off of
Mc Mahan truck.

Beam test from Ready mix truck - 10:45 A.M.

Beam test from Mc Mahan truck - 10:55 A.M.

Made air test - 7.5 - 11:15 A.M. - off of
Ready Mix truck

Made air test - 5.4 - 1:30 P.M. - off of
Mc Mahan truck - Temp. 57°

Made air test - 8.7 - 1:45 P.M. - off of
Ready mix truck - Temp. 57°

~~Found Ready Mix - Oct. 31~~

Mon. - Oct. 31, 1966 Temperature 60°

Poured 5 cu. yd. at 1:10 P.M. - 1
cylinder test was made.

Tues. - Mar. 1, 1966

Temperature 34°

Runned 1st load at 8:15 AM - 6 cu. yds. - Made
1 cylinder test - finished at 10:30 AM.

Runned 2nd load at 10:35 AM - 6 cu. yds. - Made
1 cylinder test - finished at 11:30 A.M.

9
9
9
9
9
9
9
9
9
9
9
9
9
9
9
9
9
9
9
9
9
9

	16	21
9	144	9
	24	189

189 cu. yd.

November 9, 1966 Temperature 64°

Feath & loads were poured at 9:30 A.M. -
no tests were made.

Made air test on 3rd load at 10:10 A.M. -
1.6 test

Made slump test on 2nd load - 10:20 A.M. -
3/4" slump.

Made cylinder test off load 4 at - 10:30 A.M. -

Made cylinder test off load 5 at - 10:30 A.M. -

Made a beam test at 11:00 A.M. off load # 6 -
also slump test (too wet)

Made air test on load # 7 - 11:15 A.M. - 5.8 test

Made slump test on load 10 - 6 3/4" slump - 12:00

No tests were made on loads 8 + 9

Made slump test on load # 16 - 5" slump -
1:50 P.M. -

Made beam test on load # 18 - 2:05 P.M. -

Made cylinder test off load # 19 - 2:20 P.M.

Made cylinder test off load # 20 - 2:55 P.M.

Dec. 22

Conoco

8" slump

5" "

Tuesday - Nov. 22, 1966 Temperature -48°

Poured conyd. at east end - columns for elevator
col. 8" slump

Poured conyd. at east end - column for elevator job
8" slump

Total of 32 1/2 conyd. poured

9
9
9
9
9
9
9
9
9
9
9
9
9
9
9
9
9
9
9
9
9

Wednesday - Nov. 23, 1966 Temperature 52°
Sawed 5 top H lines (roof) + columns.
No tests were made on the first 6 loads
Made cylinder test on load # 7 at
Made cylinder test on load # 8 at
Made slump test on 9th load
Made air test on 9th load - 3.8
No tests were made on load # 10
A test made on load # 11 - 3.3
Made slump test on load # 12 - 6 1/2" slump
Made cylinder test on load # 13.
Made 2 cylinder tests on load # 14
Made slump test on load # 14 - 4" slump
Made air test on load # 15 - 3.6
Made 1 beam test on load # 16 - 4" slump
Made 1 beam test on load # 17 - 4" slump
Made 2 cylinder tests on load # 18 - 4" slump

A to C roof lines

Wed - Dec 21, 1966 Temperature 35.0

No tests were made on the first ~~2~~ load

Cylinders were made at 8:50 A.M. off
1st load

Made air test on 2nd load - 9:25 A.M. - 2.5

Made beam from 3rd load - 9:35 A.M.

Made slump test from 3rd load - 5" "

No tests were made on loads No. 4-5-6

Made air test on 7th load - 11:15 A.M. - 4.2

Made 2 cylinders from 7th load - 11:20 A.M.

Made air test at 1:30 P.M. - 6.8 - 12 load

Made 2 cylinders & 1 beam on 12 load - 1:40 P.M.

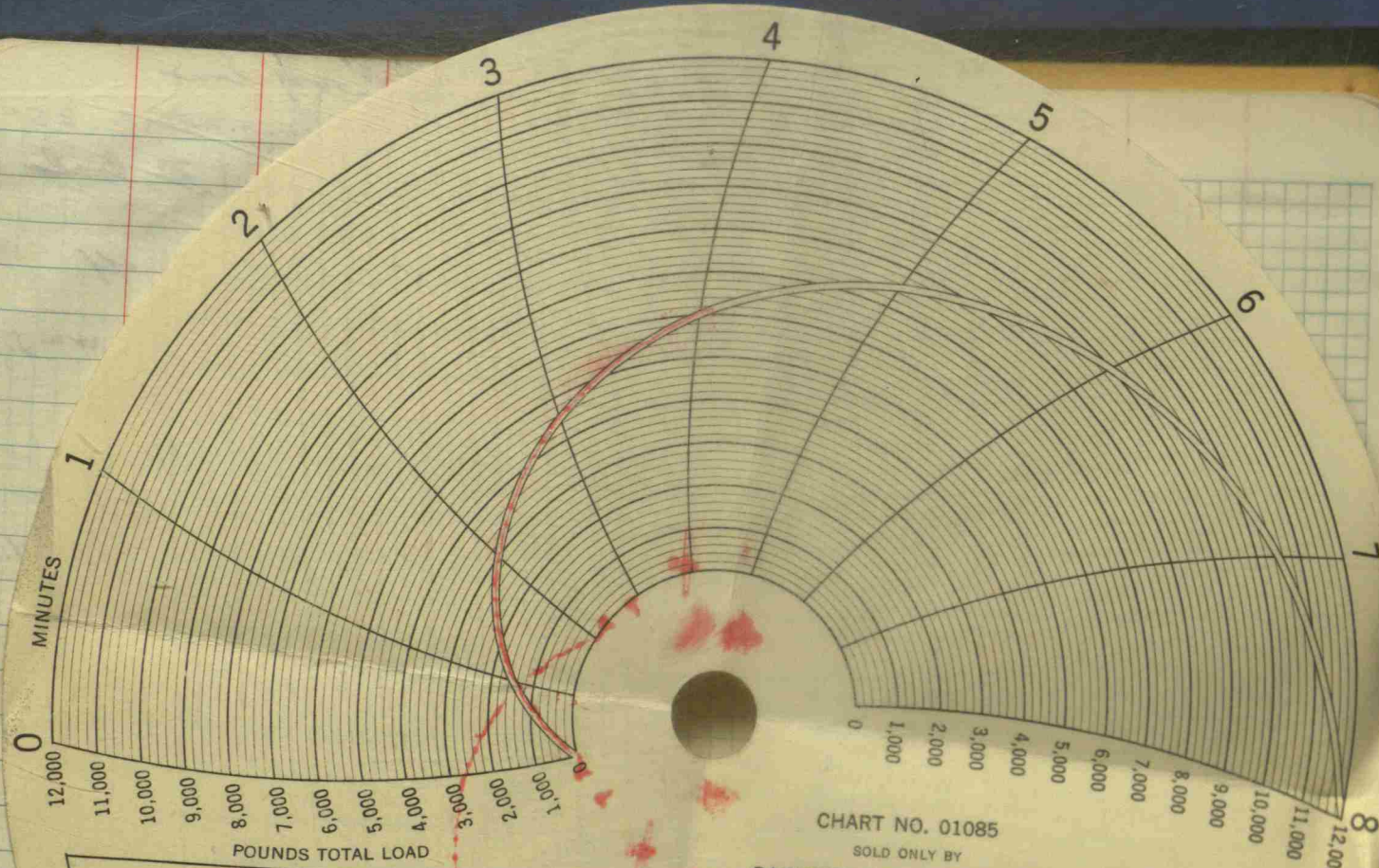


CHART NO. 01085

SOLD ONLY BY
RAINHART CO., AUSTIN, TEXAS, U.S.A.

CONCRETE BEAM FLEXURAL STRENGTH TEST - A.S.T.M. PROCEDURE C78

CONTRACTOR _____ PROJECT _____
 BEAM NO. _____ MADE _____ TESTED _____ AGE _____
 LOAD 6200 LBS., WIDTH 6" ± IN., DEPTH 6 1/2" IN., FACTOR 0.800
 FLEXURAL STRENGTH 496 PSI., SPECIFICATION _____ PSI.
 REMARKS _____

TESTING AGENCY BEAM BREAKER # 666
 TESTED BY David E Caldwell EA III
 CHECKED BY _____