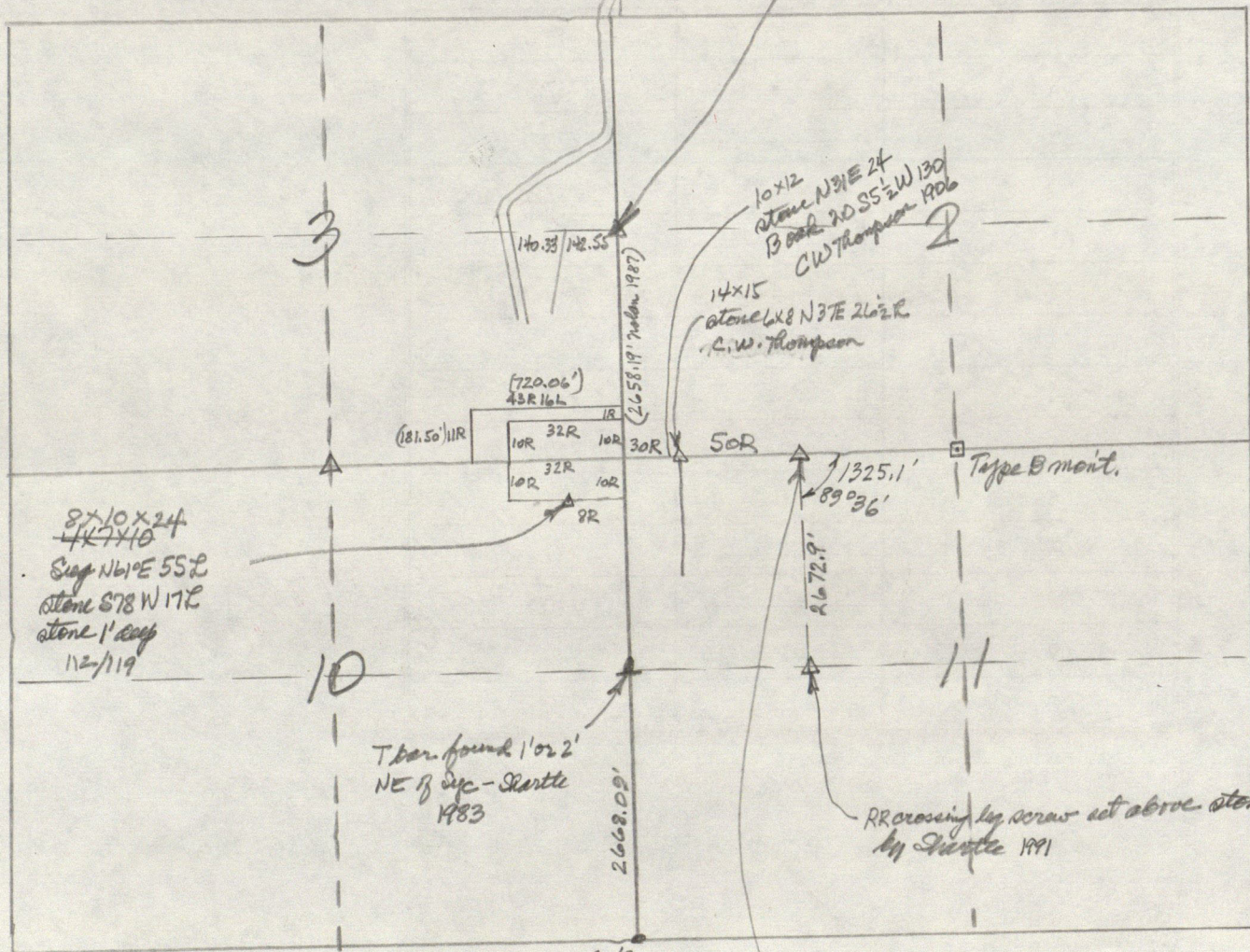


A4
LETTER

2, 3, 10, 11-14-1E HEND. COUNTY

1364

stone 5" deep 9 may 1950
 Wel N50°W 102.0'
 Edge conc. cor. post W 32.3'
 wood cor. post SW 0.45'
 Wel. 18 S5°W 26.4' Skittle



8x10x24
 4K7X10
 Sup N61°E 55.2
 Stone S78°W 17.2
 stone 1" deep
 112/119

T bar found 1'02 2'
 NE of sup - Skittle
 1983

10x12
 stone N31°E 24
 B back 20 S5 1/2 W 130
 C.W. Thompson 1906

14x15
 stone 6x8 N37°E 26 1/2 R
 C.W. Thompson

Stone 8" deep
 Power pole S 18 1/2 E 40.5'
 " " S 73 E 44.1'