

S $\frac{1}{2}$  MILE 14-14-1E

COUNTY

LETTER

LETTER

1368

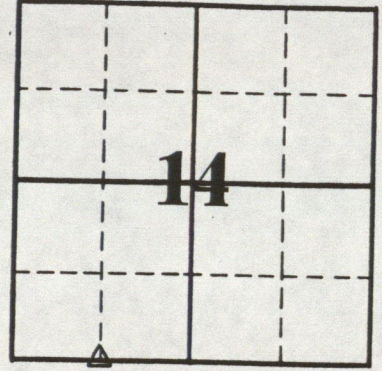
# RECORD OF CORNER

LOCATION OF MONUMENT: SECTION 14, T. 14 N., R. 1 E.

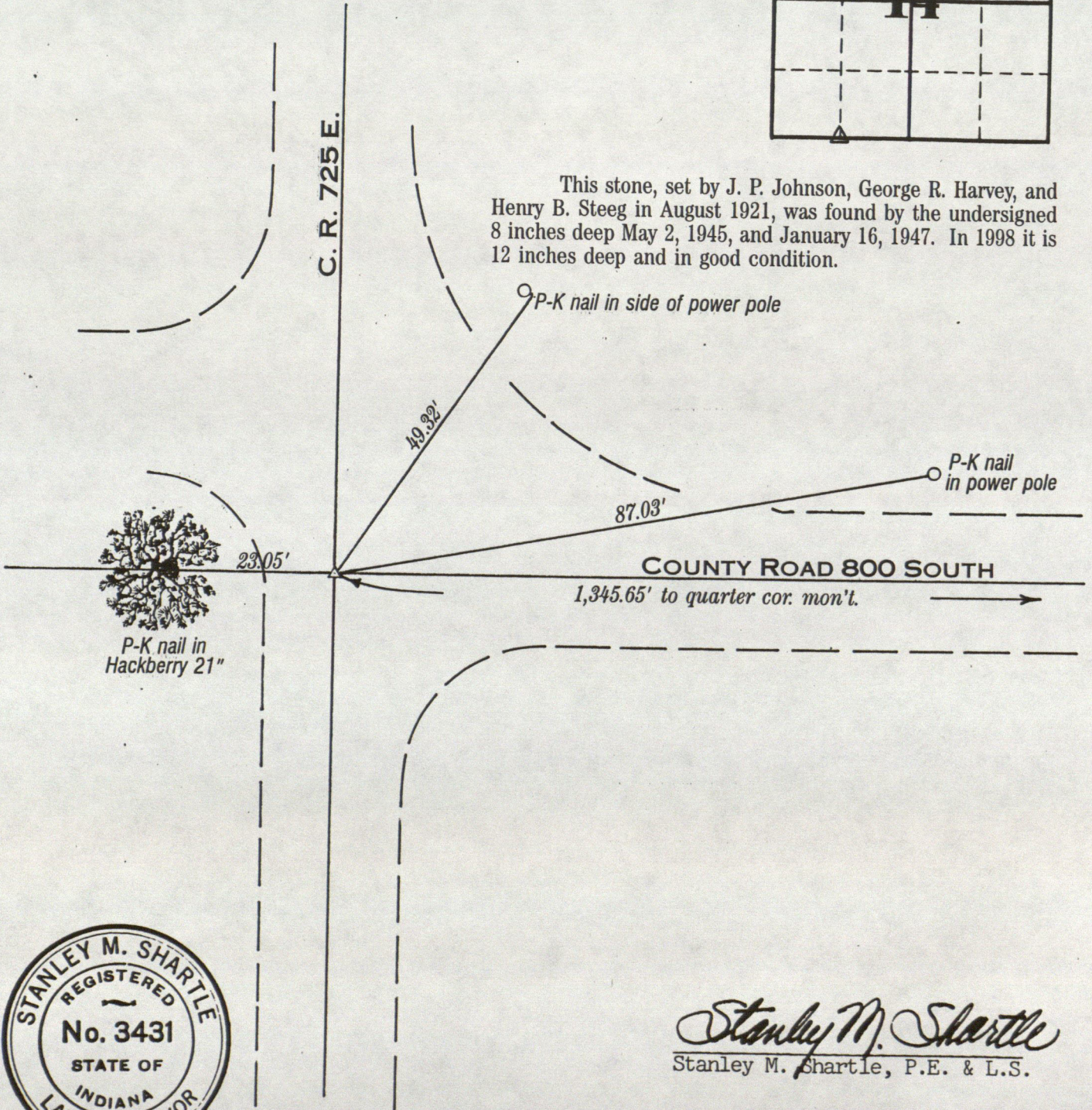
Found:  Set:  Depth: 12 inches

Description: 4x8x12" stone of Aug. 1921

Bearings to reference objects are magnetic unless a contrary mode is shown.



This stone, set by J. P. Johnson, George R. Harvey, and Henry B. Steeg in August 1921, was found by the undersigned 8 inches deep May 2, 1945, and January 16, 1947. In 1998 it is 12 inches deep and in good condition.



*Stanley M. Shartle*  
Stanley M. Shartle, P.E. & L.S.

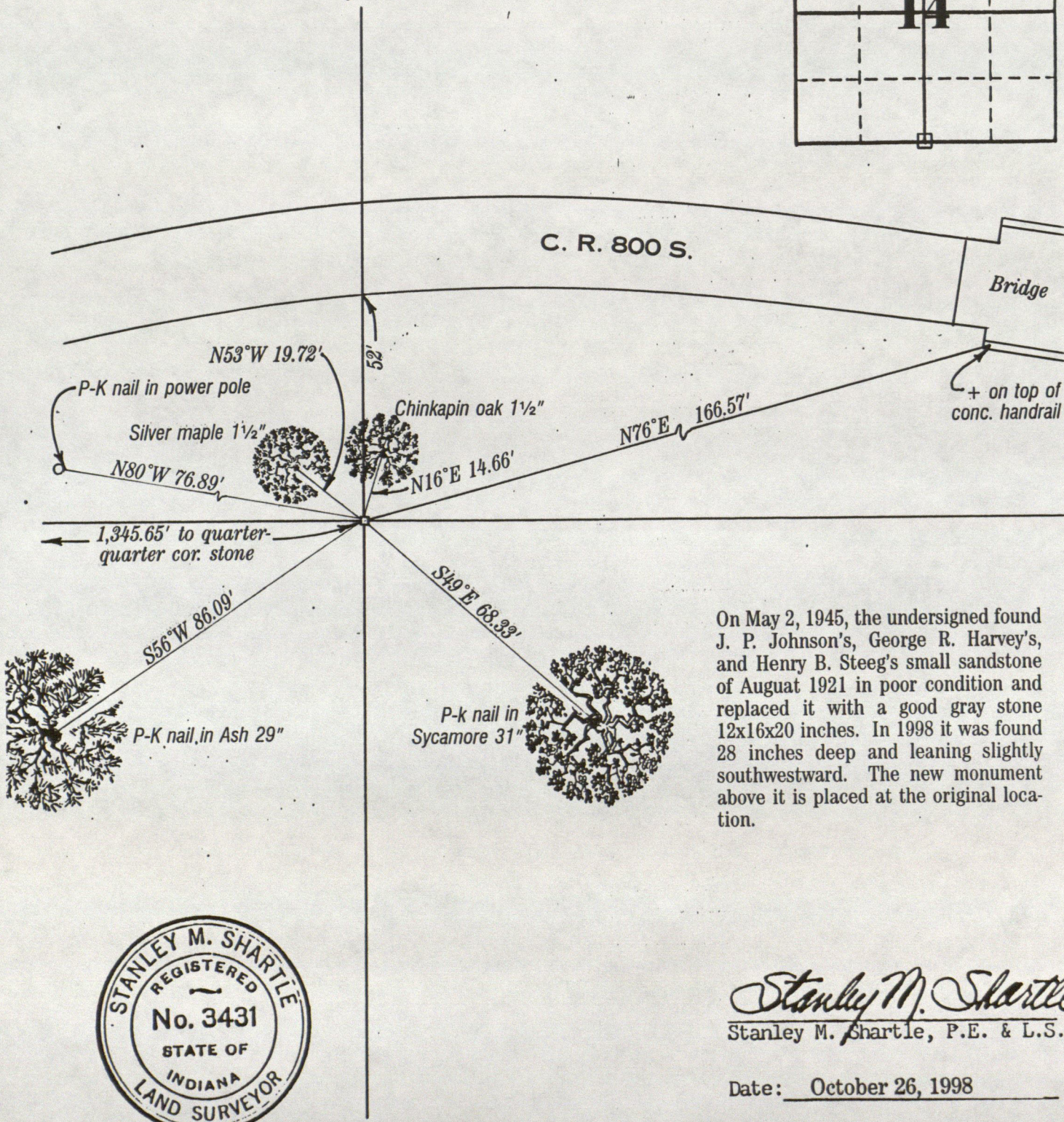
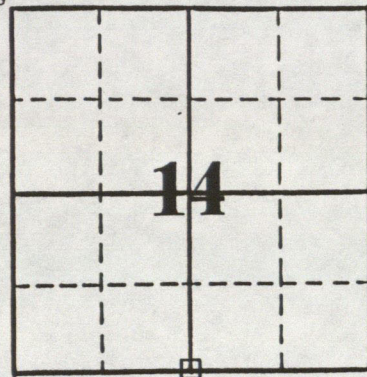
Date: October 26, 1998

# RECORD OF CORNER

LOCATION OF MONUMENT: SECTION 14, T. 14 N., R. 1 E.

Found:  Set:  Depth: 5x5x30" mon't. showing 2 inches  
 Description: Rebar in 5x5x30" conc. mon't. atop 12x16x20" stone

Bearings to reference objects are magnetic unless a contrary mode is shown.



On May 2, 1945, the undersigned found J. P. Johnson's, George R. Harvey's, and Henry B. Steeg's small sandstone of August 1921 in poor condition and replaced it with a good gray stone 12x16x20 inches. In 1998 it was found 28 inches deep and leaning slightly southwestward. The new monument above it is placed at the original location.



*Stanley M. Shartle*  
 Stanley M. Shartle, P.E. & L.S.

Date: October 26, 1998

M.A. Hopkins - Mr. Bender Survey.  
23-14-1E

May 2, 1945

R. Major Franklin  
County Surveyor  
Stanley Skuttle  
Registered Surveyor

A is in E bridge 13' east of center on west side west curb and 28.8' west of center on east side east curb of bridge.

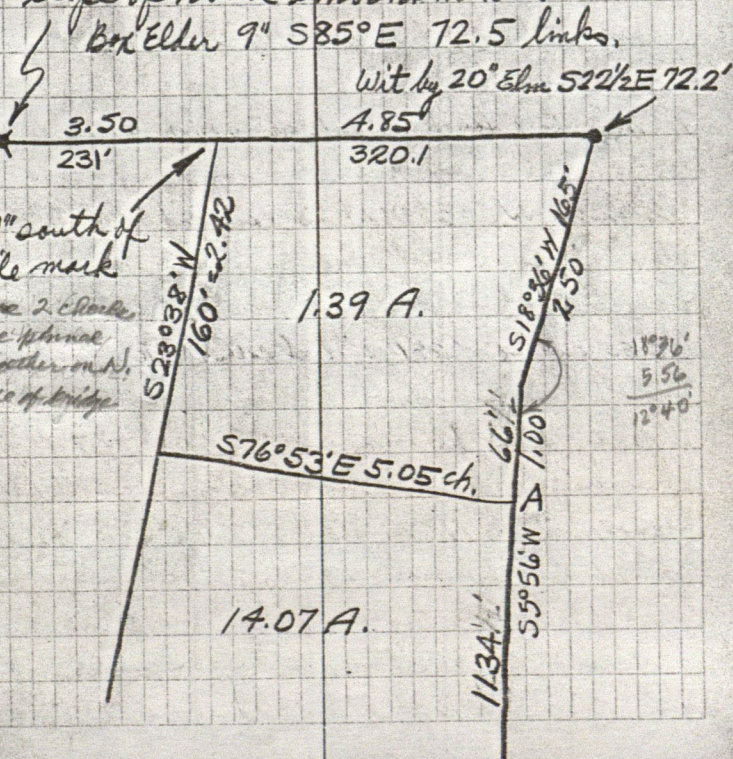
See field book 171 page 106.

For authority for Hopkins & Bender's west line see Quiet Title Record 2 page 467 or C.O.B. 77 page 313.

(See page 30)

29

1/2 Mile Stone 23-14-1E found made of sandstone, too small, and in poor condition. Stone replaced by good grey stone 12X16X20. Revisited:  
Maple 42" S 78° E 41.2 links  
Elm 8" S 10° W 36 links  
Stone in fence line South 9 links.  
Half mile stone is buried in south slope of road embankment.



14-14-1E, X

①

Survey for Everett Phillips.

Pt. N<sup>o</sup> 23-14-1E

(See previous page 29)

Jan. 16, 1947

R.M. Franklin

Stanley Startle

Ophir Claypool

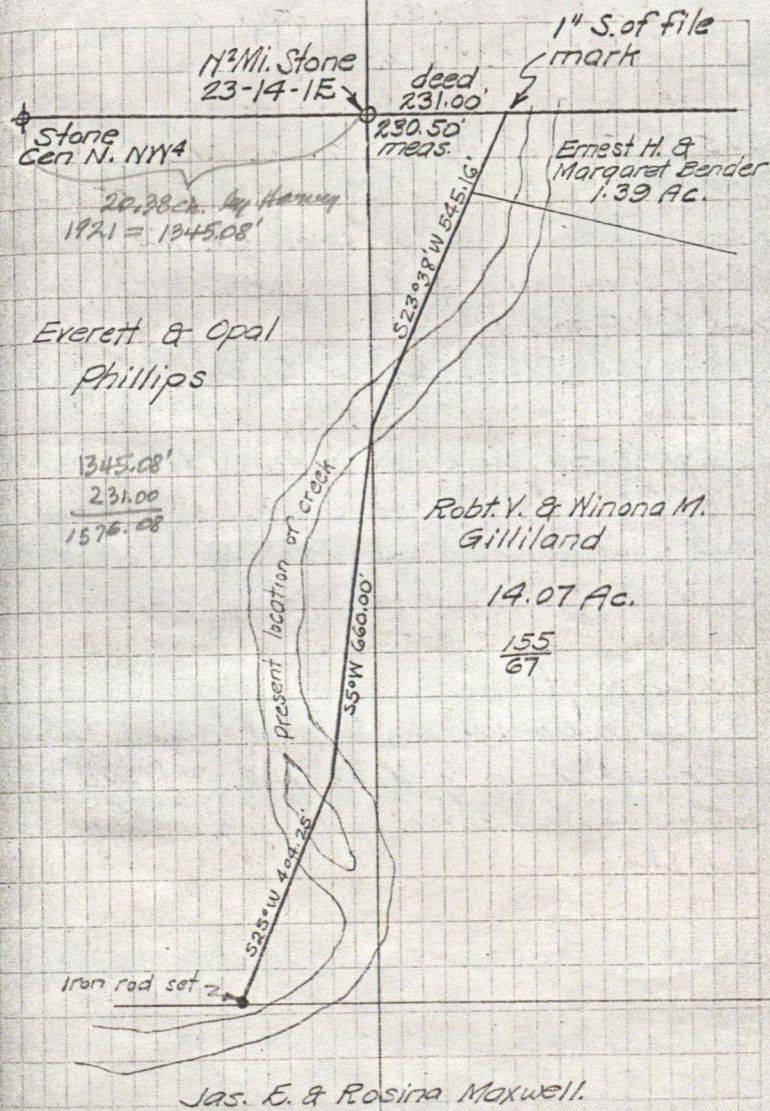
Con. N. of NW<sup>4</sup> 23 - Stone found 8" deep - wit by:  
Power pole N70°W 17.8 ft Hackberry 16 West 15.9'  
Hackberry 12 West 23.4 ft. S. end of 36"  
corrugated metal pipe N15°W 104.45 ft

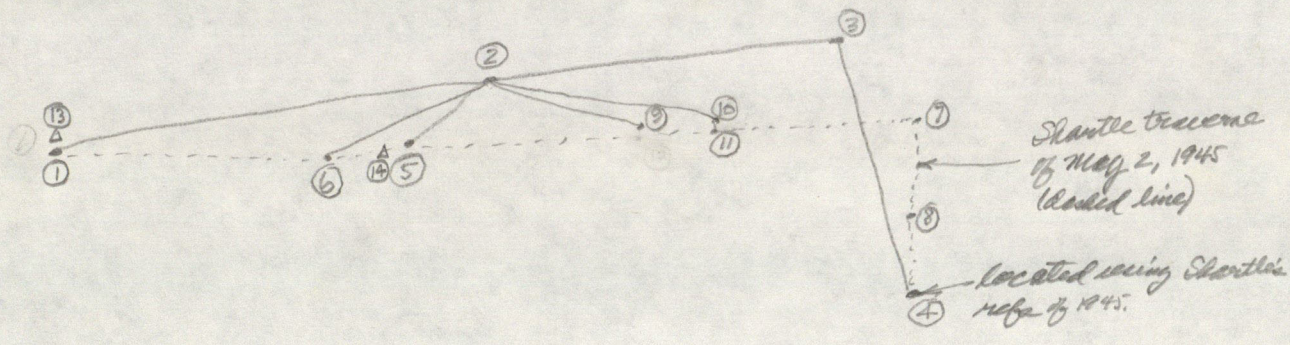
N<sup>o</sup> mile stone found by references on page 29

Produced N N E<sup>4</sup> NW<sup>4</sup> 23 eastward thru N<sup>o</sup> mi  
stone and found that same passed one inch S. of S  
end file mark as deed says. However, distance meas. =  
230.50' instead of 231' as deed calls. Here, monument  
controls distance. Since line as run agrees with deed  
in passing 1" S of file mark it is evident that former  
surveyors (4 or 5 in all) have recognized no deflection  
or angle at the N<sup>o</sup> mi stone, if there is any. Set  
transit 1" S of file mark 230.50' E of N<sup>o</sup> mi stone and  
turned 66° 22' W to S from N sec to P.L. as desc.  
in decree of Quiet Title suit (on page 29). Ch S23°38'W  
on this line 545.16 ft and set temporary stake

(see page 31)

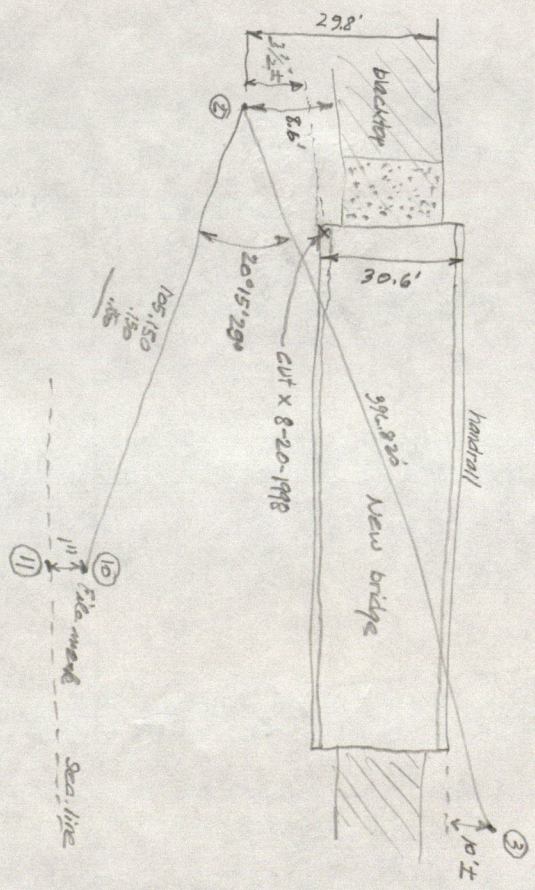
30



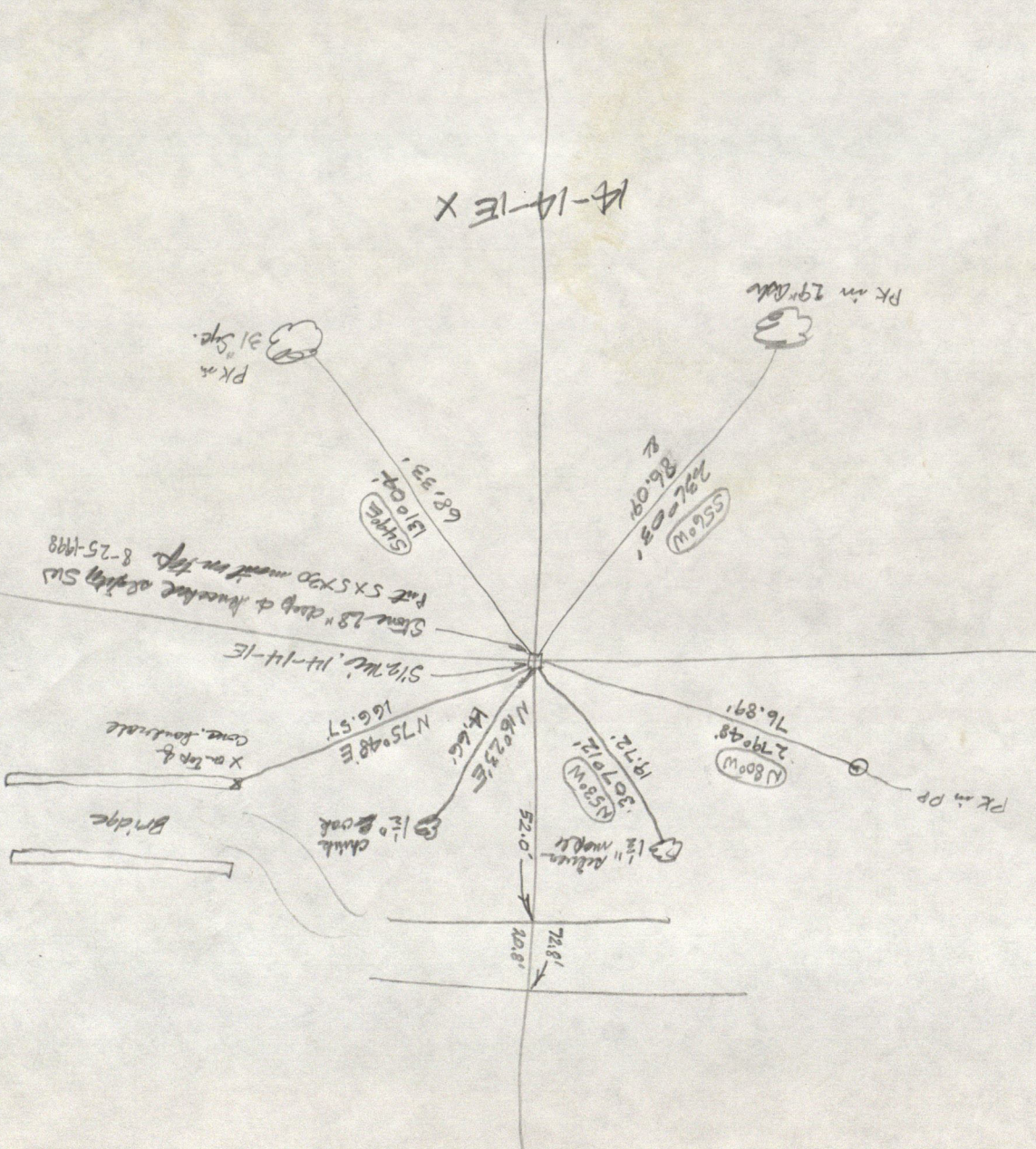


	Hor. angle	Hor. dist.	mem
3	4 0 00 00	247.615 .620	247.618*
	2 83 27 09†	396.825 .825 .825	396.825
2	3 0 00 00	396.825 .825	396.825
	5 160 13 34	138.740 .735 .735	138.737
	1 175 50 58	1477.890 .895	1477.898
	6 168 59 21	274.500 .485 .500 .495	274.495
	9 21 08 36	95.555	
	10 20 15 29	105.150 .150 .150 .150	105.150

\* 247.635' on Aug. 18  
 † 83° 27' 21" on Aug. 18.



# A-14-1E X





N 1/2 Mile 23-14-1E

- 1 Cen. N. NW<sup>4</sup> from my only remaining ref. (The Hack. 12"-now 19") - did not discover stone
- 2 Temp. point
- 3 " "
- 4 My 1945 point A (See Field Book 202, p. 29)
- 5 Albert Hobson's pipe leaning SW
- 6 " " "
- 7 Computed location of NE cor. 1, 392. (F.B. 202, p. 29)
- 8 " " " cor. of " ( " " " )
- 9 file mark on bridge (S end of mark) on N. chord of bridge in 4th bay E. of NW cor.
- 10 Main file mark. made 1921 by J.P. Johnson & Dick Hawley (where N. chord is pinned)
- 11 1 inch S. of 10 on sec. line
- 12 not used
- 13 Stone found 12" deep at Cen. S. S10<sup>4</sup>14-14-1E
- 14 5x5x30" conc. ment. with rebar set at S 1/2 mile 14 over my 12x16x20" stone set 5-2-1945

#23.DAT - To find or restore the north quarter corner of 23-14-1E:

C	5	2000.00000	2000.00000	!	!
B	5-7	N90-00-00E		!	
C	2	2028.00000	2133.00000		
M	7-5-8	288-36-00	165.00		
M	8-7-4	167-20-00	66.00		
D	5-2		138.737		!
M	2-5-3	-160-13-34	396.825	!	!
M	3-2-4	-83-27-09	247.618	!	0.50
M	2-3-1	175-50-58	1479.898	!	!
M	2-3-6	168-59-21	274.495	!	!
A	6-1-7	180-00-00			
M	5-1-7	180-00-00	550.60		

STAR\*NET Adjustment Program  
 Version 5.040  
 Copyright 1993 STARPLUS SOFTWARE, INC.  
 Licensed for Use by Shartle Engineering  
 Serial Number 10270  
 Run Date : Sun Aug 09 1998 10:42:48

6	1	7	180-03-24.40	0-03-24.40	2.99	68.4*
5	1	7	179-57-11.84	-0-02-48.16	3.26	51.7*

Solution Has Converged in 6 Iterations

Coordinate Changes in Last Iteration Were Less Than 0.00005 (US Feet)

Adjusted Distance Observations (US Feet)

From	To	Adj Dist	Residual	StdErr	StdRes
7	8	165.1767	0.1767	0.0175	10.1*
8	4	65.9448	-0.0552	0.0172	3.2*
5	2	138.7370	0.0000	FIXED	0.0
2	3	396.8250	0.0000	FIXED	0.0
3	4	248.1119	0.4939	0.5000	1.0
2	1	1479.8980	-0.0000	FIXED	0.0
2	6	274.4950	0.0000	FIXED	0.0
5	7	549.4067	-1.1933	0.0186	64.2*

Station	Adjusted Coordinates (US Feet)		Description
	N	E	
1	2001.0980	653.1952	
2	2040.9478	2132.5565	
3	2022.8944	2528.9707	
4	1777.9432	2489.4944	
5	2000.0000	2000.0000	
6	2000.8331	1861.0085	
7	2000.0000	2549.4067	
8	1843.5097	2496.5474	

Adjusted Azimuth/Bearing Observations

From	To	Adj Bearing	Residual	StdErr	StdRes
5	7	N90-00-00.00E	0-00-00.00	FIXED	0.0

Adjusted Bearings and Horizontal Distances (US Feet)

From	To	Bearing	Distance
7	8	S18-39-50.27W	165.1767
8	4	S06-08-22.74W	65.9448
5	2	N72-50-01.15E	138.7370
2	3	S87-23-32.85E	396.8250
3	4	S09-09-18.15W	248.1119
2	1	S88-27-25.15W	1479.8980
2	6	S81-35-48.15W	274.4950
5	7	N90-00-00.00E	549.4067
6	7	S89-55-50.37E	688.3987
6	1	N89-59-14.77W	1207.8134
5	1	N89-57-11.84W	1346.8053

Elapsed Time = 00:00:00

Statistical Summary  
 =====  
 Number of Stations = 8  
 Number of Observations = 17  
 Number of Unknowns = 14  
 Number of Redundant Obs = 3

Observation	Count	Sum Squares	Error
		of StdRes	Factor
Angles	8	8816.09	79.02
Distances	8	4233.45	54.76
Az/Bearings	1	0.00	0.00
Total	17	13049.54	65.95

Adjustment Fails the Chi Square Test at 5% Level

Adjusted Observations and Residuals

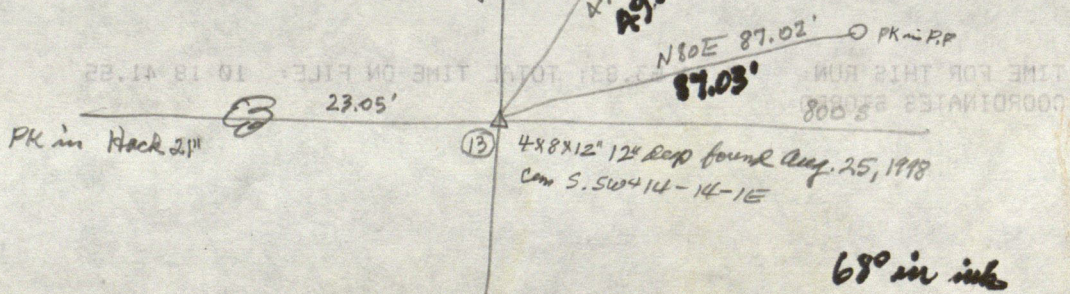
Adjusted Angle Observations					
At	From	To	Adj Angle	Residual	StdErr StdRes
7	5	8	288-39-50.27	0-03-50.27	7.70 29.9*
8	7	4	167-28-32.47	0-08-32.47	21.40 24.0*
2	5	3	-160-13-34.00	-0-00-00.00	FIXED 0.0
3	2	4	-83-27-09.00	-0-00-00.00	FIXED 0.0
2	3	1	175-50-58.00	0-00-00.00	FIXED 0.0
2	3	6	168-59-21.00	-0-00-00.00	FIXED 0.0

COORDINATE FILE: NO LENGTH = 80 POINTS; TIME ON FILE: 10 13 47.71  
TRIAL CALCS. \*\*\*\*\* COGO \*\*\*\*\*

FROM TYPE	BEARING	DISTANCE	NORTHING	EASTING
10		3.98	2,000.0000	2,529.4439
11		1.97	2,000.0000	2,529.4439
12		2.10A	2,000.0000	2,529.4439

PK	BEARING	DISTANCE	NORTHING	EASTING
13		1479.793	2,000.0000	2,529.4439
14		139.68'	2,000.0000	2,529.4439

PK	BEARING	DISTANCE	NORTHING	EASTING
15		23.05'	2,000.0000	2,529.4439
16		87.03'	2,000.0000	2,529.4439
17		87.02'	2,000.0000	2,529.4439
18		85°	2,000.0000	2,529.4439



TIME FOR THIS RUN: 801 TOTAL TIME ON FILE: 10 18 41.82  
COORDINATED BY: 5 008

4x8x12" 12x 20x found Aug. 25, 1998  
Cm S. SW 14-14-1E

-----  
COORDINATE FILE:AD HOC LENGTH = 80 POINTS; TIME ON FILE: 10 18 41.55  
TRIAL CALCS. \*\*\*\*\* JOB #1997  
-----

\*\*\*\*\* COGO \*\*\*\*\*

FROM TYPE	BEARING	DISTANCE	TO	NORTHING	EASTING
START			2	2,040.94780	2,132.55650
2 TRAV SW	88 28 01.18	1479.79300	13	2,001.35916	653.29315
START			11	2,000.00624	2,229.44369
11 TRAV NW	89 57 02.95	230.50000	14	2,000.20409	1,998.94378
14 INV NW	89 57 02.95	1345.65112*	13	2,001.35916	653.29315
START			PT-PT ANGLES		
ANG 3 - 2 - 14 :	C.W. 160 26 02.23	C.C.W. 199 33 57.77		139.68683	
OFFSETS FROM A LINE			11	2,000.00624	2,229.44369
BASE BRG NW	89 57 02.95				
PT	BASE DIST	OFFSET			
7	-319.96290	0.26841			
14	230.50000	0.00000			
5	229.44360	-0.20319			
6	368.43576	0.51061			
13	1576.15112	0.00000			
1	1576.24885	-0.26125			
START			14	2,000.20409	1,998.94378
14 INV SE	79 03 48.79	1.07576	5	2,000.00000	2,000.00000

LIST

1	2,001.09800	653.19520
2	2,040.94780	2,132.55650
3	2,022.89440	2,528.97070
4	1,777.94320	2,489.49440
5	2,000.00000	2,000.00000
6	2,000.83310	1,861.00850
7	2,000.00000	2,549.40670
8	1,843.50970	2,496.54740
9	2,002.46199	2,220.01850
10	2,000.08957	2,229.44369
11	2,000.00624	2,229.44369
13	2,001.35916	653.29315
14	2,000.20409	1,998.94378

TIME FOR THIS RUN: 0 13 38.55; TOTAL TIME ON FILE: 10 32 20.09  
COORDINATES STORED

\* 1345.08' by J.P. Johnson, Dick Hanney, & H.B. Steeg Aug, 1921.