

14-2E

1427

SECTION CORNER RECORD MARION COUNTY, INDIANA

Sec. 4 T. 14 R. 2E

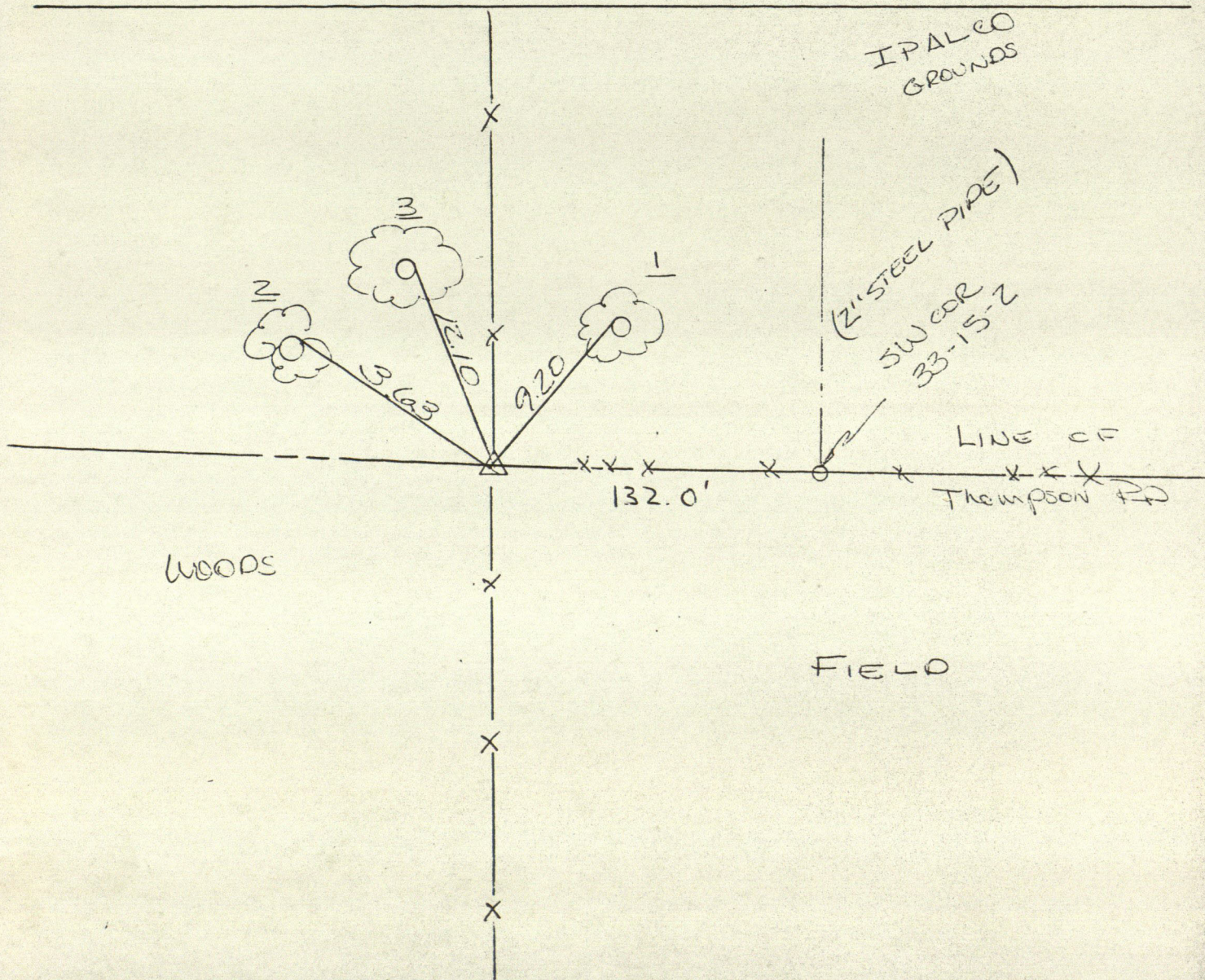
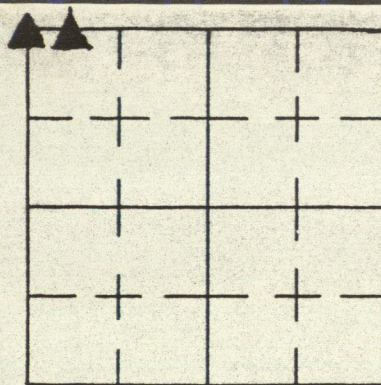
DATE : 9/7/77

CREW : P.C. - WILCOXEN

Inst. - BRUER Rod. - VANCEY

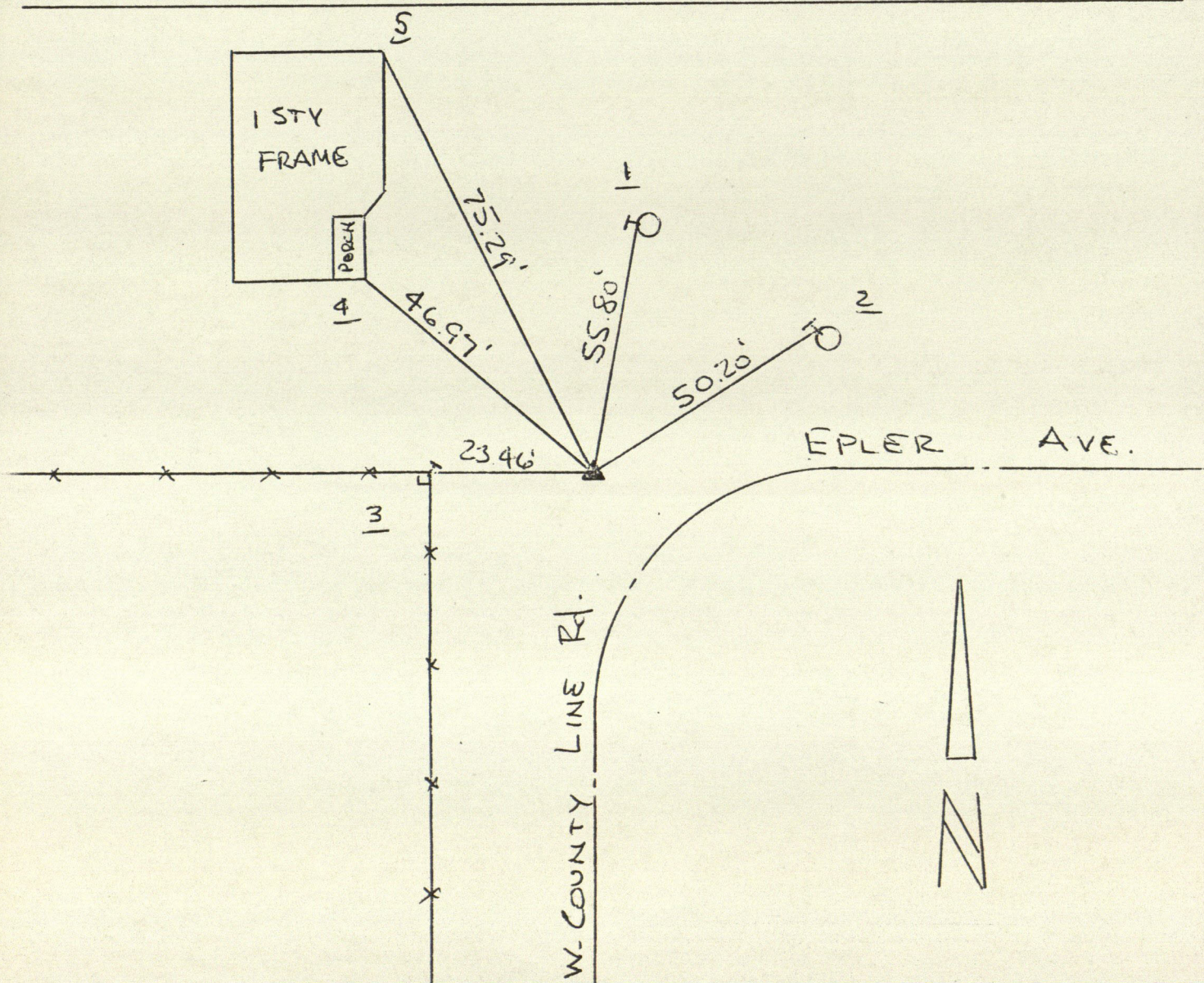
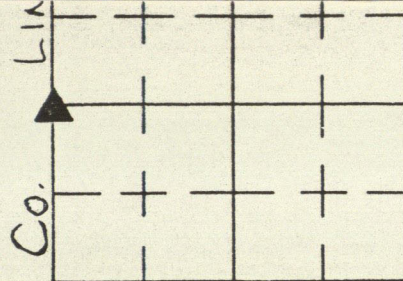
TYPE of MARKER : STONE Cond. of MARKER : GOOD

METHOD of ESTABLISHMENT : DEED RECORDS



REFERENCE	DISTANCE	DESCRIPTION
1	9.20	RONAIL W SIDE 15" MAPLE 10" UP
2	3.63	RONAIL E SIDE TWIN WALNUT 6" UP
3	12.10	RONAIL E SIDE 20" HACKBERRY 6" UP

MARION COUNTY, INDIANA

Sec. 4 T. 14 R. 2DATE: 8/18/77CREW: P.C. - R. MILLERInst. - T. SMITH Rod. -TYPE of MARKER: STONE @ SURFACE Cond. of MARKER: GoodMETHOD of ESTABLISHMENT: ARB Maps

REFERENCE	DISTANCE	DESCRIPTION
1	55.80	Rd Nail W. Side PwP# 120-681W 12" up
2	50.20	Rd Nail NW Side PwP# 121-681W 12" up
3	23.46	Rd Nail NE cor. fence post 12" up
4	46.97	SE corner of porch @ foundation
5	75.29	NE corner of house @ foundation

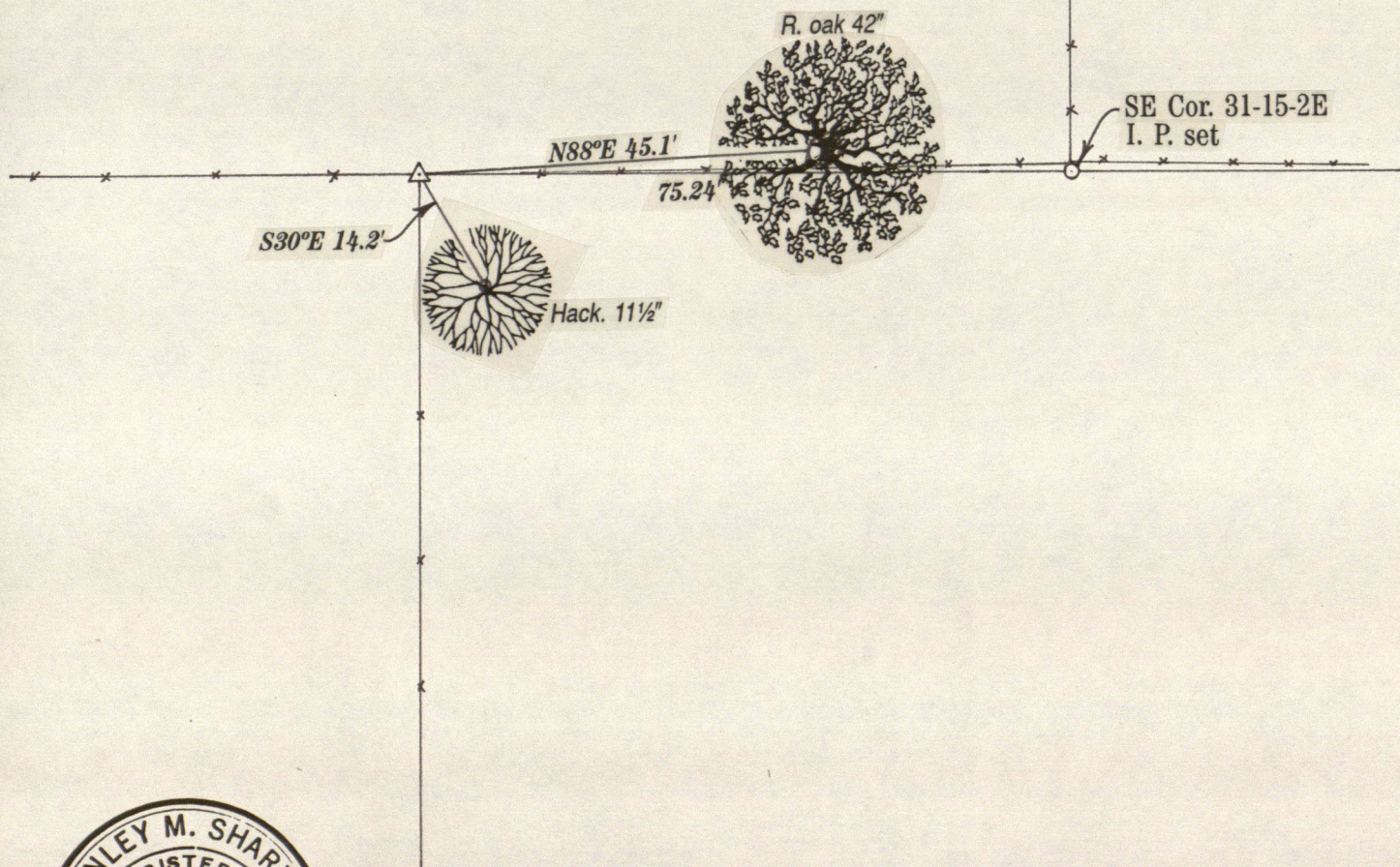
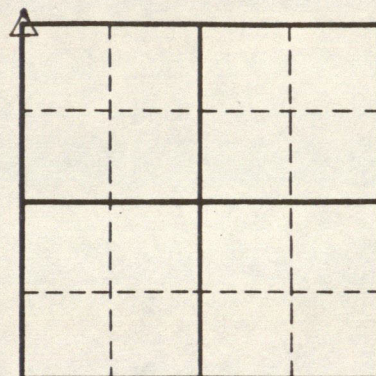
RECORD OF CORNER

LOCATION OF MONUMENT: SECTION 5, T. 14 N., R. 2 E.

Found: ☒ Set: ☐ Depth: Showing 4 inches

Description: + on stone

Bearings to reference objects are magnetic unless a contrary mode is shown.



Stanley M. Shartle
Stanley M. Shartle, P.E. & L.S.

Date: October 28, 1993

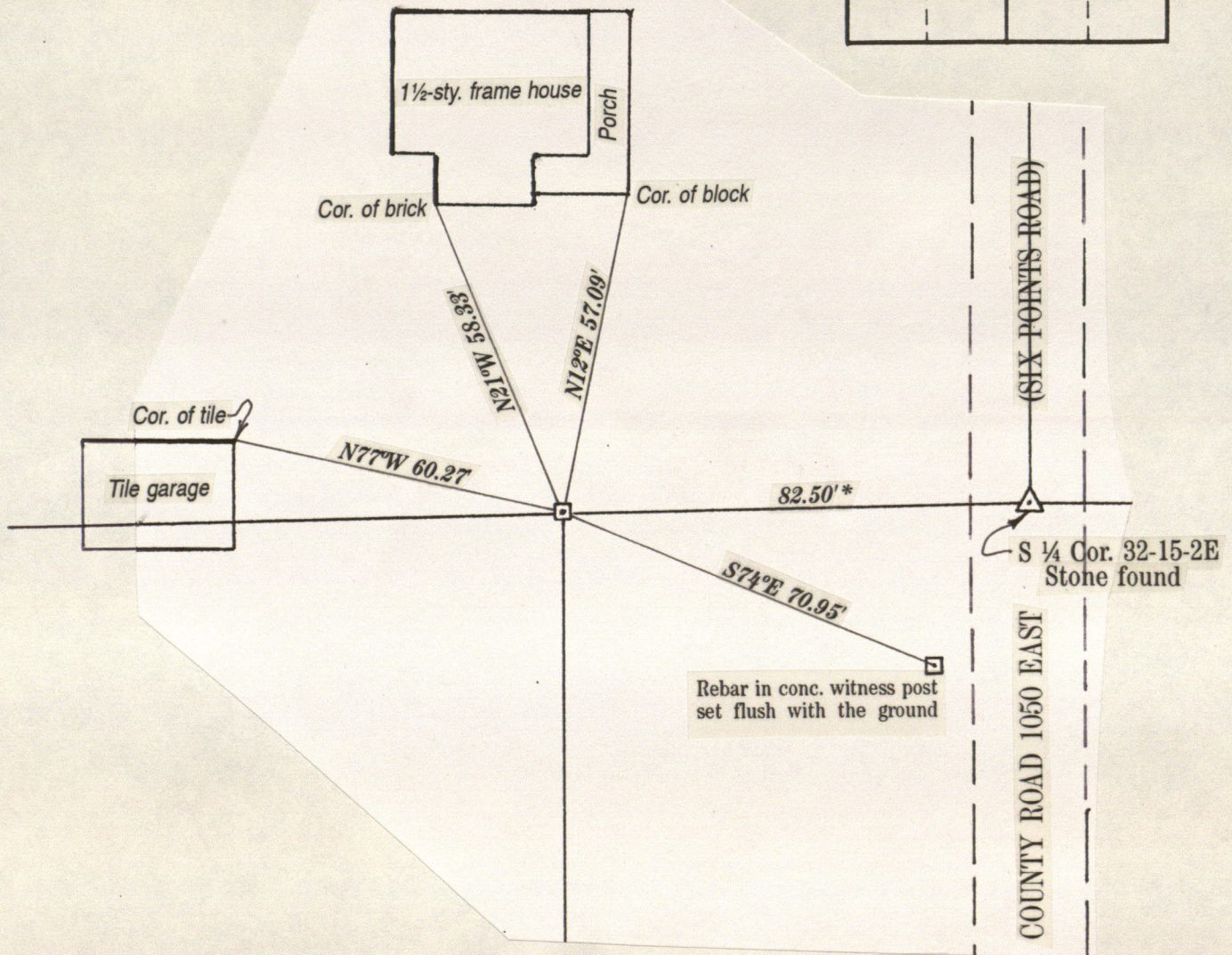
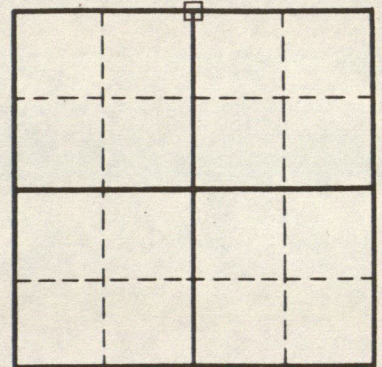
RECORD OF CORNER

LOCATION OF MONUMENT: SECTION 5, T. 14 N., R. 2 E.

Found: Set: ☒ Depth: One inch deep under sod

Description: Rebar in 5x5x30" conc. mon't.

Bearings to reference objects are magnetic unless a contrary mode is shown.



*From County Surveyor Job Hadley's 1870 survey in Book C, p. 322.



Stanley M. Shartle
Stanley M. Shartle, P.E. & L.S.

Date: October 28, 1993

Made by

STANLEY M. SHARTLE

under an appointment by the Surveyor of Hendricks County pursuant to §5 of the Perpetual Corner Records Act of 1965 (Ch. 319) to administer said act.

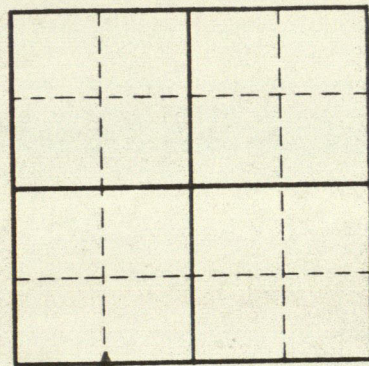
LOCATION OF MONUMENT: SECTION 5, T. 14 N., R. 2 E.

Found: ☒ Set: ☐ Depth: 11 inches

Description: see below

$x = 709,070.03'$, $y = 793,158.10'$
Indiana Coordinate System, West Zone

Distances shown are at ground level excepting those in parentheses which are grid distances. Azimuths are grid azimuths measured clockwise from the south through 360° . Bearings to reference objects are magnetic unless a contrary mode is shown.



stone $4\frac{1}{2} \times 6 \times 7$ " set by John W. Trotter in the Kellum estate, found and replaced by a limestone $8 \times 14 \times 15$ "

SE cor. $W\frac{1}{2}$ SW $\frac{1}{4}$ 5-14-2E
stone $5\frac{1}{2} \times 8 \times 14$ " found & replaced by limestone $10 \times 18 \times 38$ " with small notch in top for corner

COUNTY ROAD 600 S.

$87^\circ 51' 10''$ 120.38' (120.38')

$S85^\circ W$ 177.56'

nail & cap
in pwr. pole

$S84^\circ E$
147.80'
nail & cap
in power pole

power pole

CO. RD. 1025 E.

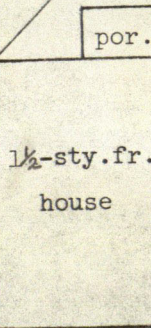
$S91^\circ 56'$

$S45^\circ W$ 113.82'

$S35^\circ W$ 87.84'

$S23^\circ W$ 136.70'

All references
to house are
taken to cor-
ners of block
foundation



Stanley M. Shartle
Stanley M. Shartle, P.E. & L.S.

The azimuths and coordinates used herein are based on the following elements determined by Fuller & Associates for the Indiana Department of Natural Resources: Grid coordinates of B.M. Station WLP TTA-5: $x=700,567.520'$, $y=790,534.549'$; Grid azimuth to B.M. Station WLP TTA-4 = $59^\circ 25' 42''$ 147'.

August 19, 1978

Made by

STANLEY M. SHARTLE

under an appointment by the Surveyor of Hendricks County pursuant to §5 of the Perpetual Corner Records Act of 1965 (Ch. 319) to administer said act.

LOCATION OF MONUMENT: SECTION 6, T. 14 N., R. 2 E.

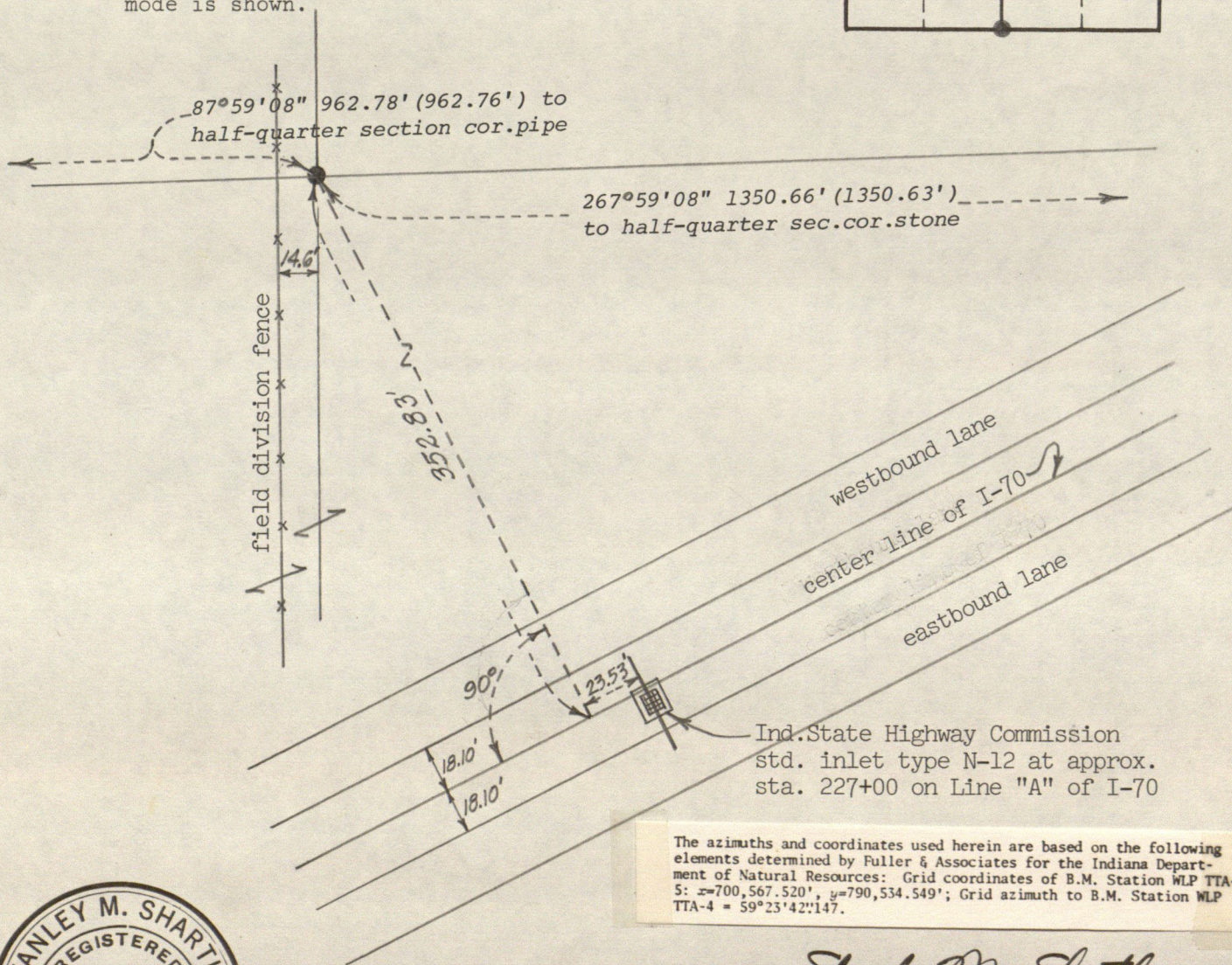
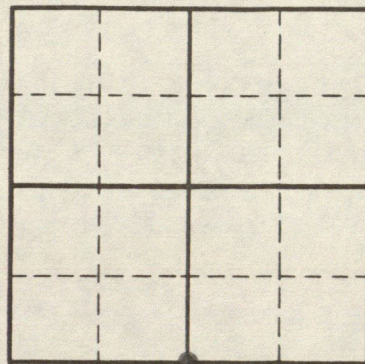
Found: Set: ☒ Depth: 12 inches

Description: #5 x 24" rebar in cultivated field

$x = 705,060.27'$, $y = 793,020.06'$

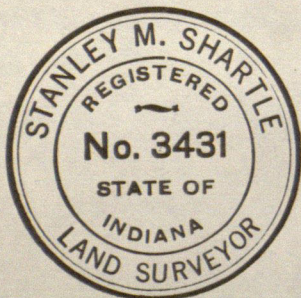
Indiana Coordinate System, West Zone

Distances shown are at ground level excepting those in parentheses which are grid distances. Azimuths are grid azimuths measured clockwise from the south through 360°. Bearings to reference objects are magnetic unless a contrary mode is shown.



Ind. State Highway Commission
std. inlet type N-12 at approx.
sta. 227+00 on Line "A" of I-70

The azimuths and coordinates used herein are based on the following elements determined by Fuller & Associates for the Indiana Department of Natural Resources: Grid coordinates of B.M. Station WLP TTA-5: $x=700,567.520'$, $y=790,534.549'$; Grid azimuth to B.M. Station WLP TTA-4 = $59^{\circ}23'42''147$.



Stanley M. Shartle
Stanley M. Shartle, P.E. & L.S.

Date: August 19, 1978

Made by

STANLEY M. SHARTLE

under an appointment by the Surveyor of Hendricks County pursuant to §5 of the Perpetual Corner Records Act of 1965 (Ch. 319) to administer said act.

LOCATION OF MONUMENT: SECTION 6, T. 14 N., R. 2 E.

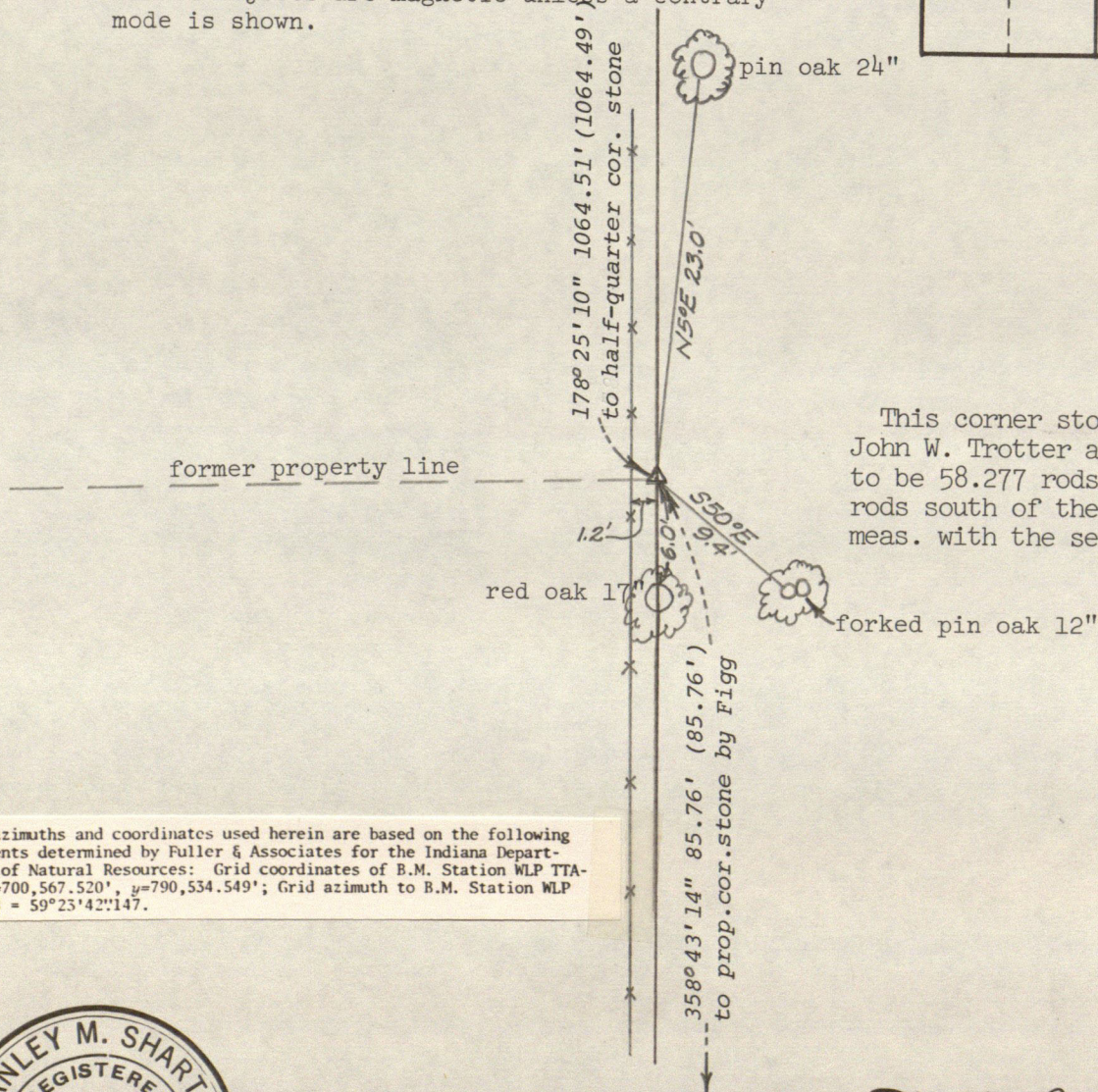
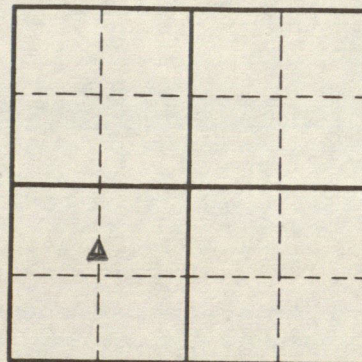
Found: ☒ Set: ☐ Depth: showing 3 inches

Description: stone 12x15x20"

$x = 704,065.17'$, $y = 794,639.03'$

Indiana Coordinate System, West Zone

Distances shown are at ground level excepting those in parentheses which are grid distances. Azimuths are grid azimuths measured clockwise from the south through 360°. Bearings to reference objects are magnetic unless a contrary mode is shown.



This corner stone was set by John W. Trotter and said by him to be 58.277 rods east and 64.52 rods south of the west qtr. cor., meas. with the section bearings.

The azimuths and coordinates used herein are based on the following elements determined by Fuller & Associates for the Indiana Department of Natural Resources: Grid coordinates of B.M. Station WLP TTA-5: $x=700,567.520'$, $y=790,534.549'$; Grid azimuth to B.M. Station WLP TTA-4 = $59^{\circ}23'42''147$.



Stanley M. Shartle
Stanley M. Shartle, P.E. & L.S.

Date: August 19, 1978

Made by

STANLEY M. SHARTLE

under an appointment by the Surveyor of Hendricks County pursuant to §5 of the Perpetual Corner Records Act of 1965 (Ch. 319) to administer said act.

LOCATION OF MONUMENT: SECTION 6, T. 14 N., R. 2 E.

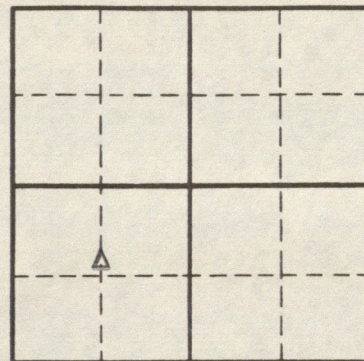
Found: ☒ Set: ☐ Depth: 5 inches

Description: stone with long N-S ridge on top

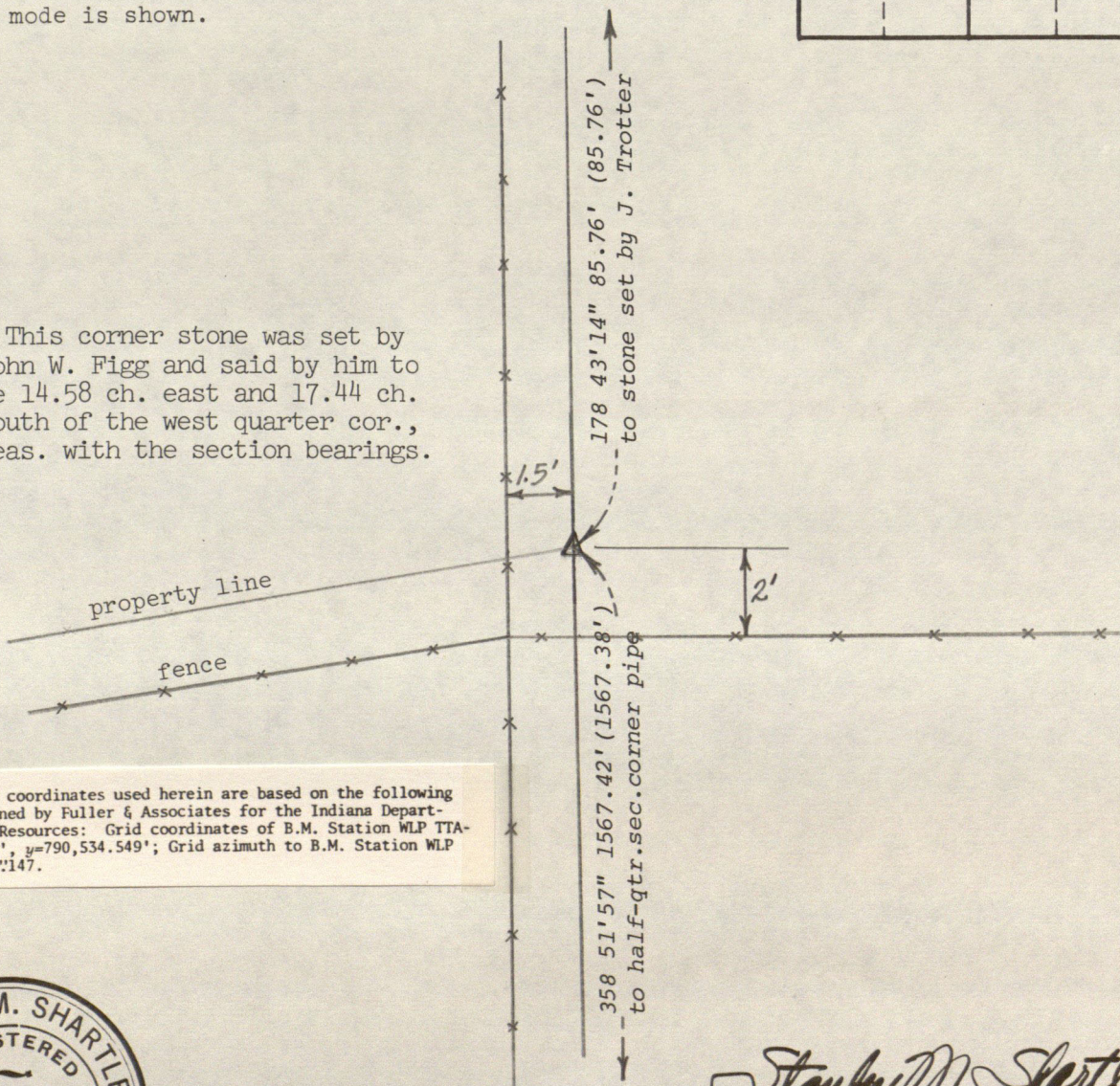
$x = 704,067.09'$, $y = 794,553.29'$

Indiana Coordinate System, West Zone

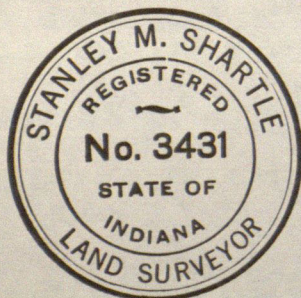
Distances shown are at ground level excepting those in parentheses which are grid distances. Azimuths are grid azimuths measured clockwise from the south through 360° . Bearings to reference objects are magnetic unless a contrary mode is shown.



This corner stone was set by John W. Figg and said by him to be 14.58 ch. east and 17.44 ch. south of the west quarter cor., meas. with the section bearings.



The azimuths and coordinates used herein are based on the following elements determined by Fuller & Associates for the Indiana Department of Natural Resources: Grid coordinates of B.M. Station WLP TTA-5: $x=700,567.520'$, $y=790,534.549'$; Grid azimuth to B.M. Station WLP TTA-4 = $59^\circ 23' 42'' 147$.



Stanley M. Shartle
Stanley M. Shartle, P.E. & L.S.

Date: August 19, 1978

Made by

STANLEY M. SHARTLE

under an appointment by the Surveyor of Hendricks County pursuant to §5 of the Perpetual Corner Records Act of 1965 (Ch. 319) to administer said act.

LOCATION OF MONUMENT: SECTION 6, T.14 N., R.2 E.

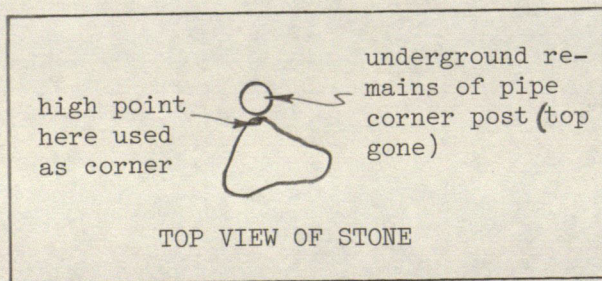
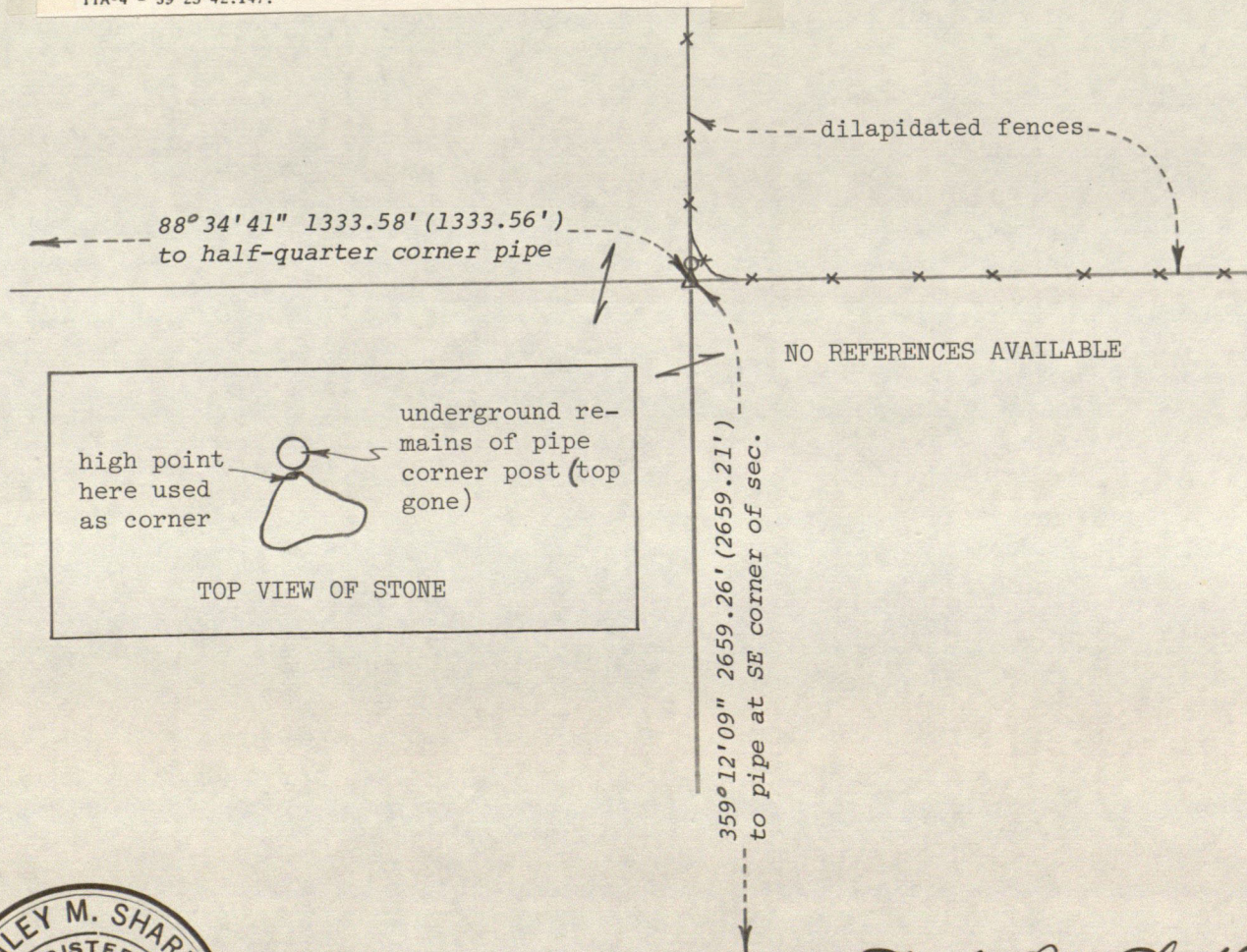
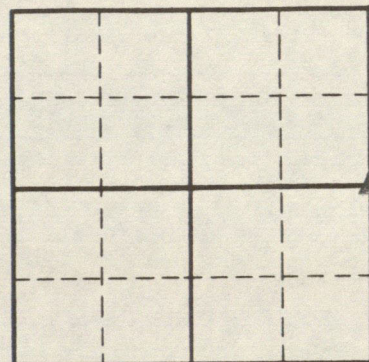
Found: ☒ Set: ☐ Depth: flush with top of ground

Description: light brown stone 5x8x20"

$x = 707,707.95'$, $y = 795,775.25'$
Indiana Coordinate System, West Zone

Distances shown are at ground level excepting those in parentheses which are grid distances. Azimuths are grid azimuths measured clockwise from the south through 360°. Bearings to reference objects are magnetic unless a contrary mode is shown.

The azimuths and coordinates used herein are based on the following elements determined by Fuller & Associates for the Indiana Department of Natural Resources: Grid coordinates of B.M. Station WLP TTA-5: $x=700,567.520'$, $y=790,534.549'$; Grid azimuth to B.M. Station WLP TTA-4 = $59^{\circ}23'42''147$.



TOP VIEW OF STONE



Stanley M. Shartle
Stanley M. Shartle, P.E. & L.S.

Date: August 19, 1978

Made by

STANLEY M. SHARTLE

under an appointment by the Surveyor of Hendricks County pursuant to § of the Perpetual Corner Records Act of 1965 (Ch. 319) to administer said act.

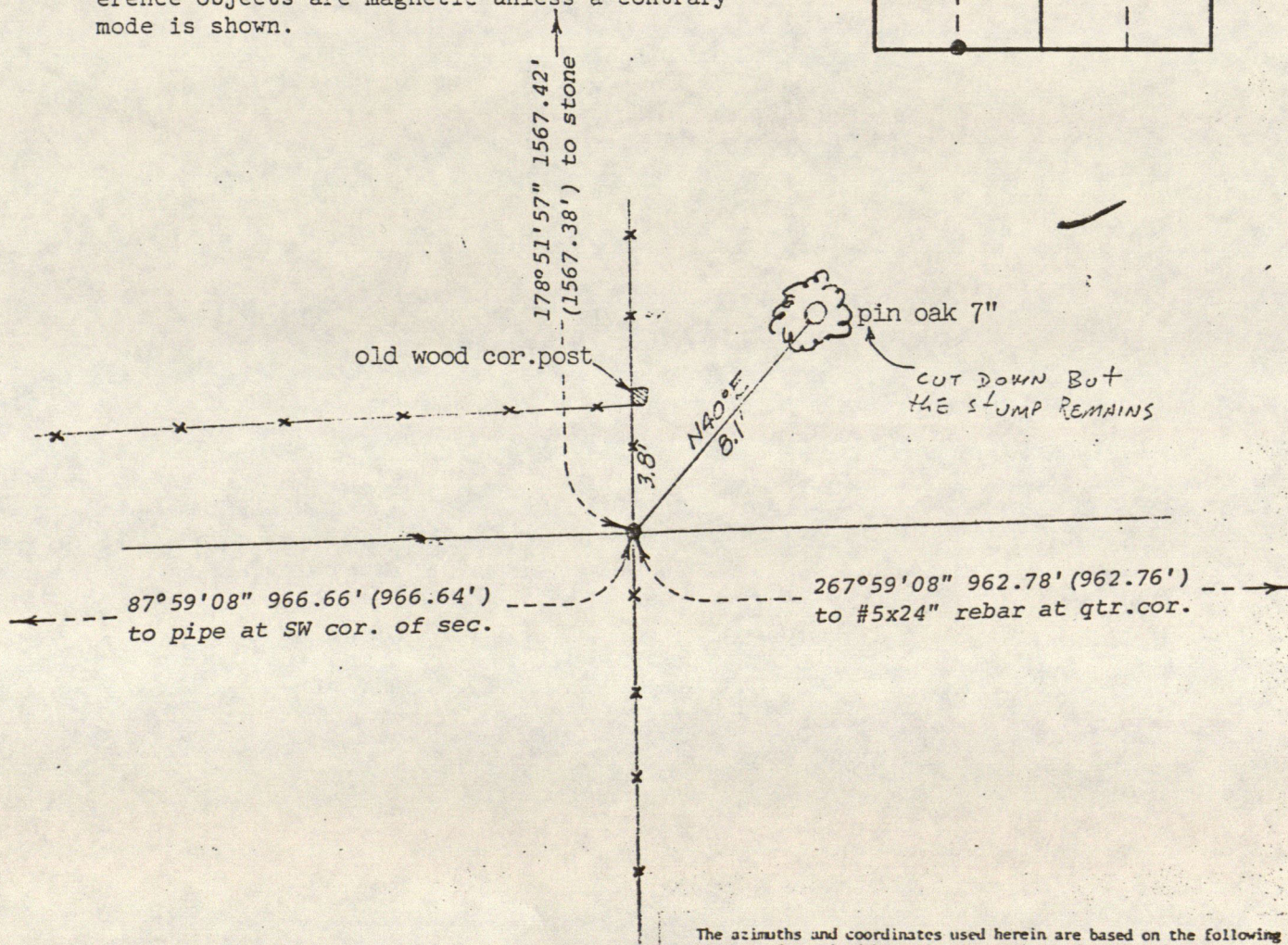
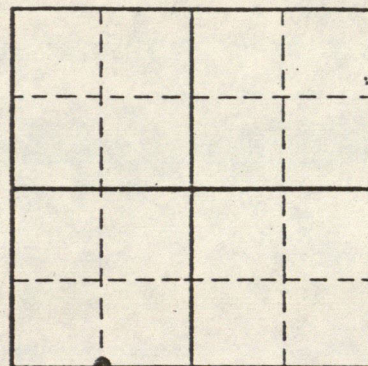
LOCATION OF MONUMENT: SECTION 6, T. 14 N., R. 2 E.

Found: Set: ☒ Depth: showing 5 inches

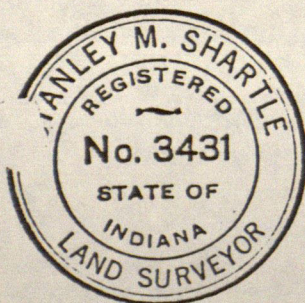
Description: 1"x 33" pipe

$x = 704,098.11'$, $y = 792,986.22'$
Indiana Coordinate System, West Zone

Distances shown are at ground level excepting those in parentheses which are grid distances. Azimuths are grid azimuths measured clockwise from the south through 360°. Bearings to reference objects are magnetic unless a contrary mode is shown.



The azimuths and coordinates used herein are based on the following elements determined by Fuller & Associates for the Indiana Department of Natural Resources: Grid coordinates of B.M. Station WLP TTA-5: $x = 700,567.520'$, $y = 790,534.549'$; Grid azimuth to B.M. Station WLP TTA-4 = $59^{\circ}23'42''147$.



Stanley M. Shartle
Stanley M. Shartle, P.E. & L.S.

Date: August 19, 1978

Made by

STANLEY M. SHARTLE

under an appointment by the Surveyor of Hendricks County pursuant to §5 of the Perpetual Corner Records Act of 1965 (Ch. 319) to administer said act.

LOCATION OF MONUMENT: SECTION 6, T.14 N., R.2 E.

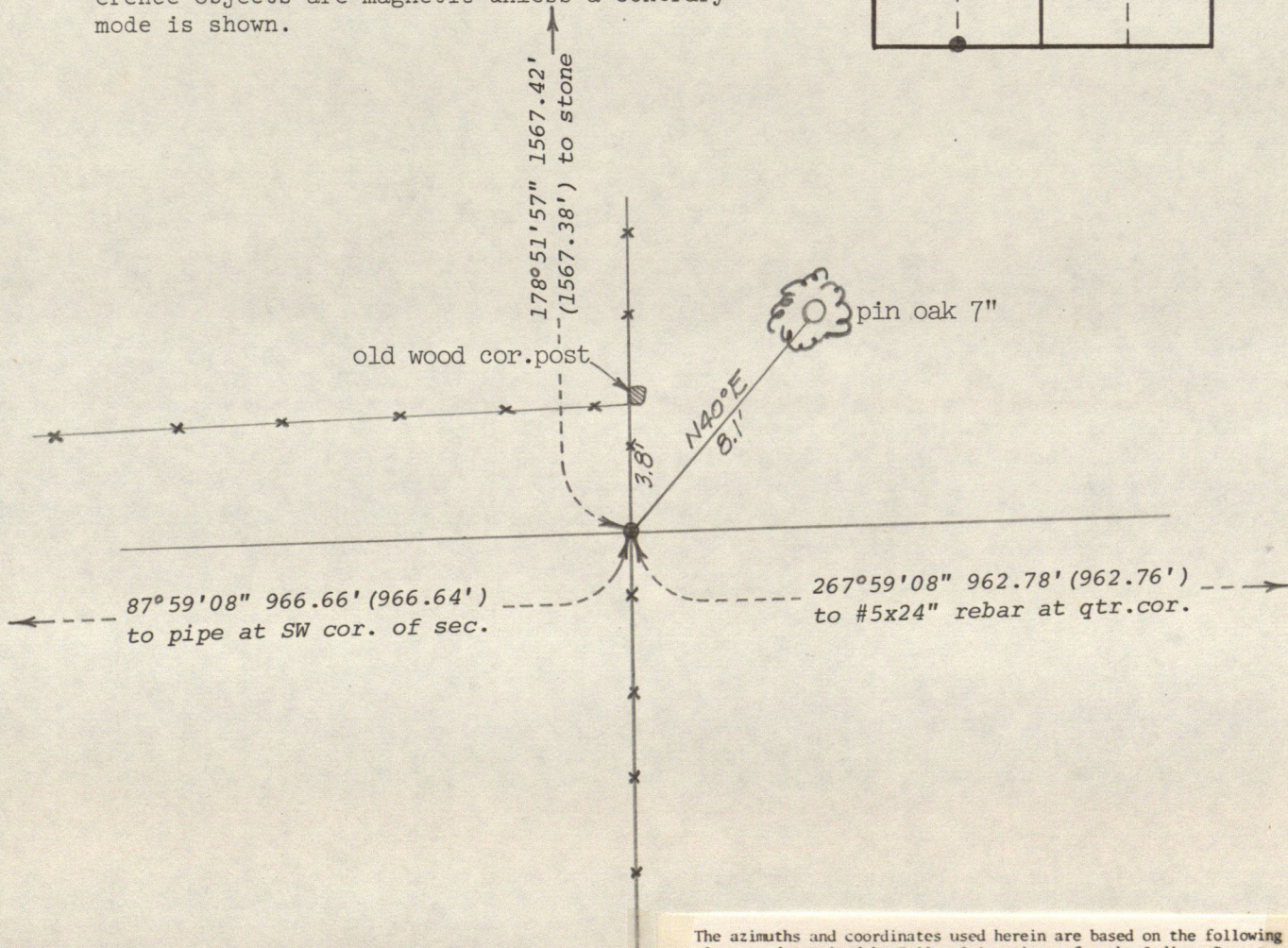
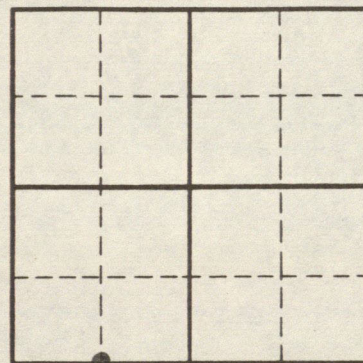
Found: Set: ☒ Depth: showing 5 inches

Description: 1"x 33" pipe

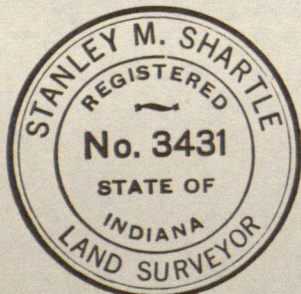
$x = 704,098.11'$, $y = 792,986.22'$

Indiana Coordinate System, West Zone

Distances shown are at ground level excepting those in parentheses which are grid distances. Azimuths are grid azimuths measured clockwise from the south through 360° . Bearings to reference objects are magnetic unless a contrary mode is shown.



The azimuths and coordinates used herein are based on the following elements determined by Fuller & Associates for the Indiana Department of Natural Resources: Grid coordinates of B.M. Station WLP TTA-5: $x=700,567.520'$, $y=790,534.549'$; Grid azimuth to B.M. Station WLP TTA-4 = $59^\circ23'42''147$.



Stanley M. Shartle
Stanley M. Shartle, P.E. & L.S.

Date: August 19, 1978

Made by

STANLEY M. SHARTLE

under an appointment by the Surveyor of Hendricks County pursuant to §5 of the Perpetual Corner Records Act of 1965 (Ch. 319) to administer said act.

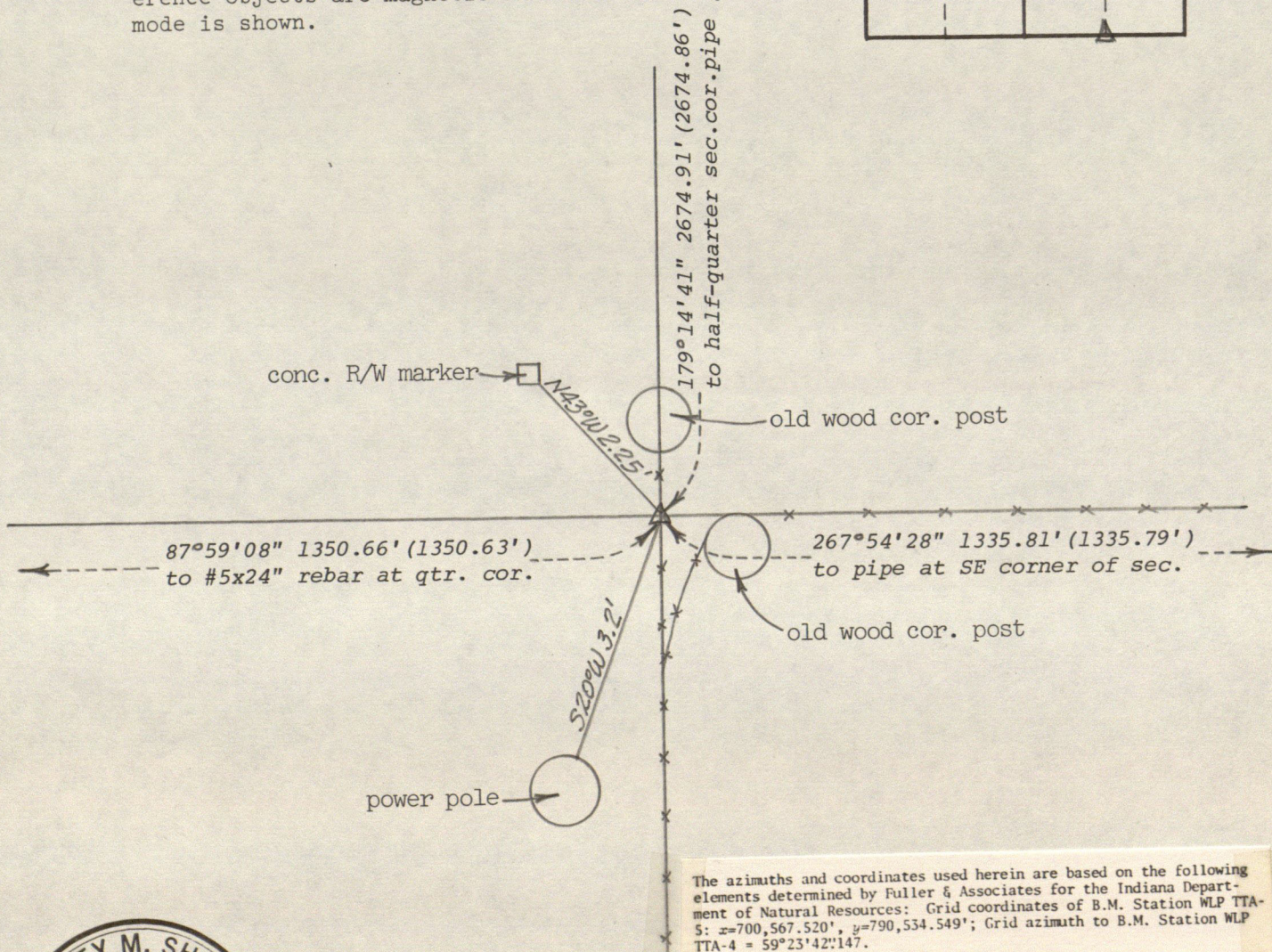
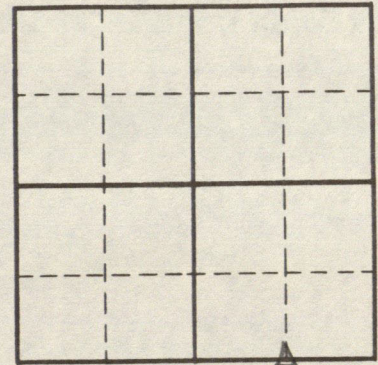
LOCATION OF MONUMENT: SECTION 6, T. 14 N., R. 2 E.

Found: ☒ Set: ☐ Depth: top flush with ground

Description: notch in top of stone

$x = 706,410.07'$, $y = 793,067.53'$
Indiana Coordinate System, West Zone

Distances shown are at ground level excepting those in parentheses which are grid distances. Azimuths are grid azimuths measured clockwise from the south through 360°. Bearings to reference objects are magnetic unless a contrary mode is shown.



The azimuths and coordinates used herein are based on the following elements determined by Fuller & Associates for the Indiana Department of Natural Resources: Grid coordinates of B.M. Station WLP TTA-5: $x=700,567.520'$, $y=790,534.549'$; Grid azimuth to B.M. Station WLP TTA-4 = $59^{\circ}23'42''147$.



Stanley M. Shartle
Stanley M. Shartle, P.E. & L.S.

Date: August 19, 1978

Made by

STANLEY M. SHARTLE

under an appointment by the Surveyor of Hendricks County pursuant to §5 of the Perpetual Corner Records Act of 1965 (Ch. 319) to administer said act.

LOCATION OF MONUMENT: SECTION 6, T. 14 N., R. 2 E.

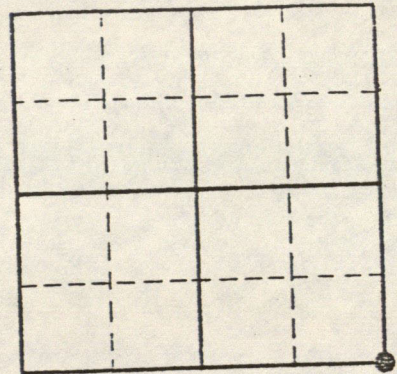
Found: Set: ☒ Depth: 2 inches

Description: 3/4"x 24" pipe in bottom of road ditch

$x = 707,744.97'$, $y = 793,116.30'$
Indiana Coordinate System, West Zone

Distances shown are at ground level excepting those in parentheses which are grid distances. Azimuths are grid azimuths measured clockwise from the south through 360°. Bearings to reference objects are magnetic unless a contrary mode is shown.

The azimuths and coordinates used herein are based on the following elements determined by Fuller & Associates for the Indiana Department of Natural Resources: Grid coordinates of B.M. Station WLP TTA-5: $x=700,567.520'$, $y=790,534.549'$; Grid azimuth to B.M. Station WLP TTA-4 = $59^{\circ}25'42"147$.



COUNTY ROAD 600 SOUTH
black top

$87^{\circ}54'28''$ 1335.81' (1335.79')
to half-quarter sec. cor. stone

$179^{\circ}12'09''$ 2659.26' (2659.21')
to qtr. sec. corner stone

$268^{\circ}13'38''$ 1205.37' (1205.35')
to property corner stone

pipe found on sec. line
16.39' S. of sec. corner

$50.22'$
 $57^{\circ}25'15.09''$
 $53^{\circ}10'27.63''$
P.W.P. GONE
nail & cap on power pole

NEW P.W.P. # H-1108-33 1/2
F2 SET
nail & cap on new wood end post

cor. block founda.

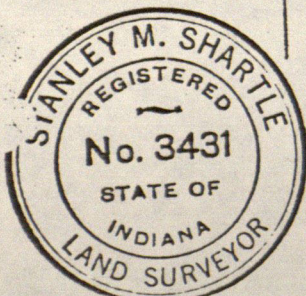
fr. gar.

porch

mobile home

MOBILE HOME
GONE FOUNDATION
OF HOUSE USED

cor. of conc. ftg. for ~~HOUSE~~
home foundation



Stanley M. Shartle
Stanley M. Shartle, P.E. & L.S.

Date: August 19, 1978

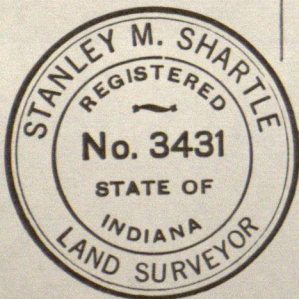
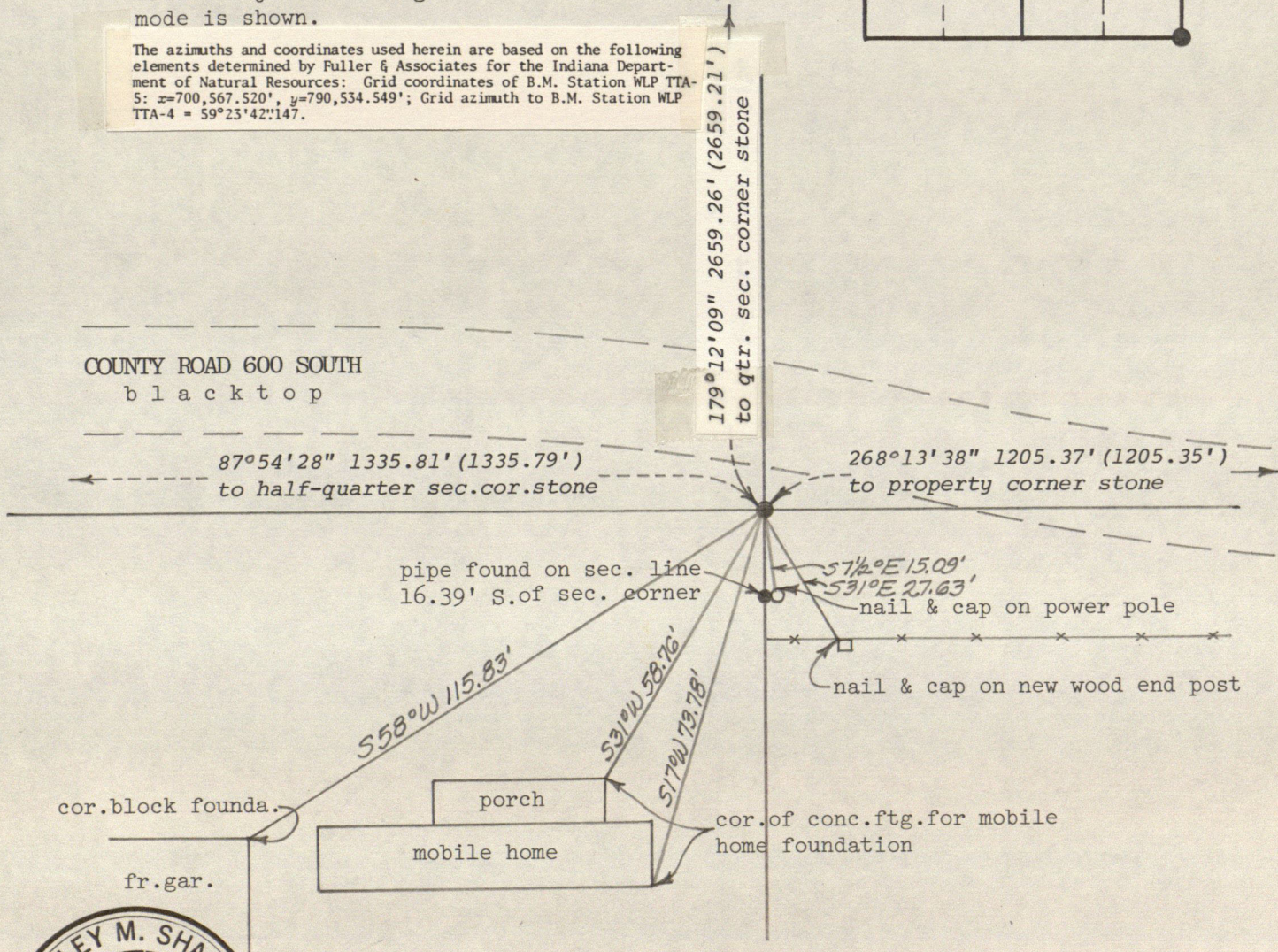
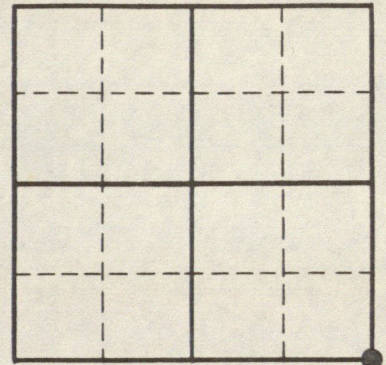
STANLEY M. SHARTLE

LOCATION OF MONUMENT: SECTION 6, T. 14 N., R. 2 E.

Description: 3/4"x 24" pipe in bottom of road ditch

Indiana Coordinate System, West Zone

The azimuths and coordinates used herein are based on the following elements determined by Fuller & Associates for the Indiana Department of Natural Resources: Grid coordinates of B.M. Station WLP TTA-5: $x=700,567.520'$, $y=790,534.549'$; Grid azimuth to B.M. Station WLP TTA-4 = $59^{\circ}23'42''.147$.



Stanley M. Shartle
Stanley M. Shartle, P.E. & L.S.

Date: August 19, 1978

Made by

STANLEY M. SHARTLE

under an appointment by the Surveyor of Hendricks County pursuant to §5 of the Perpetual Corner Records Act of 1965 (Ch. 319) to administer said act.

LOCATION OF MONUMENT: SECTION 6, T. 14 N., R. 2 E.

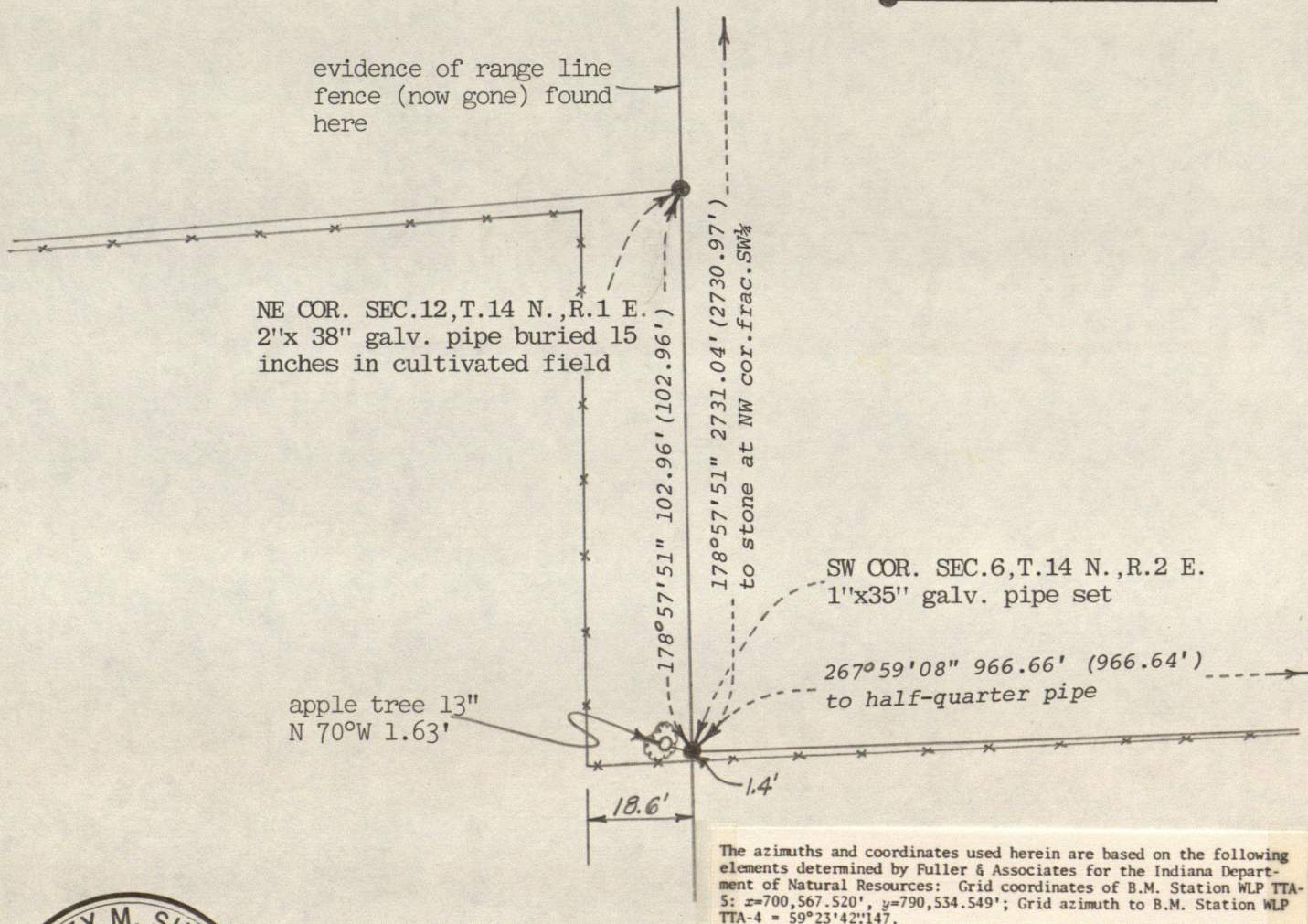
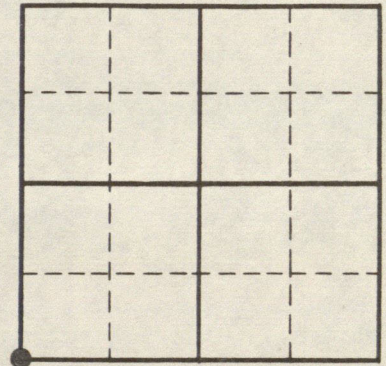
Found: Set: ☒ Depth: showing 5 inches

Description: 1"x 35" galv. pipe

$x = 703,132.07'$, $y = 792,952.24'$

Indiana Coordinate System, West Zone

Distances shown are at ground level excepting those in parentheses which are grid distances. Azimuths are grid azimuths measured clockwise from the south through 360° . Bearings to reference objects are magnetic unless a contrary mode is shown.



Stanley M. Shartle
Stanley M. Shartle, P.E. & L.S.

Date: August 19, 1978

Made by
STANLEY M. SHARTLE

under an appointment by the Surveyor of Hendricks County pursuant to §5 of the Perpetual Corner Records Act of 1965 (Ch. 319) to administer said act.

LOCATION OF MONUMENT: SECTION 6, T. 14 N., R. 2 E.

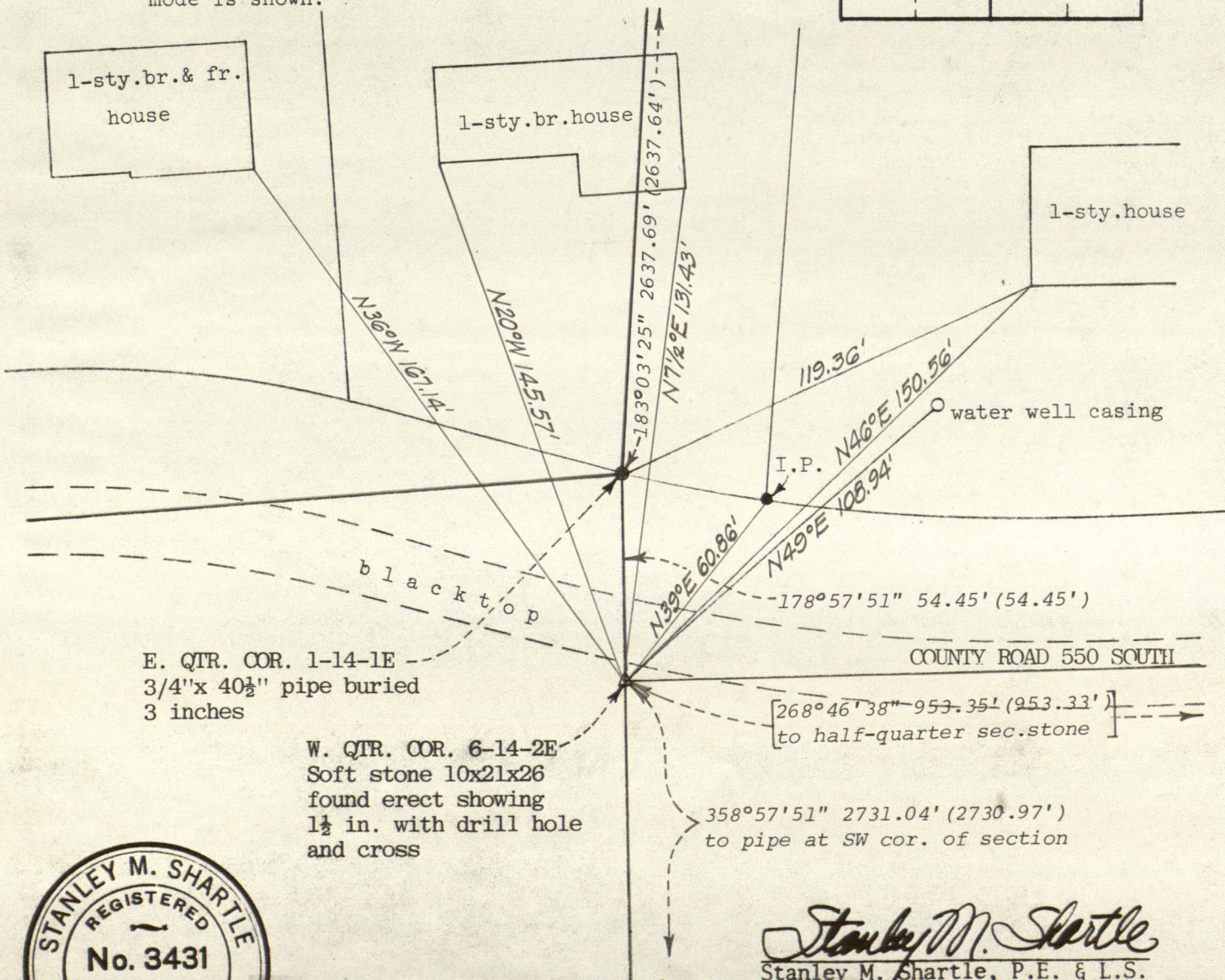
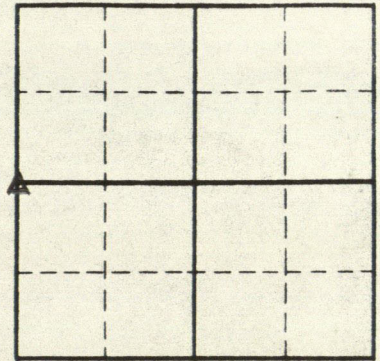
Found: ☒ Set: ☐ Depth: showing 1.5 inches

Description: See below

$x = 703,082.70'$, $y = 795,682.77'$

Indiana Coordinate System, West Zone

Distances shown are at ground level excepting those in parentheses which are grid distances. Azimuths are grid azimuths measured clockwise from the south through 360° . Bearings to reference objects are magnetic unless a contrary mode is shown.



Stanley M. Shartle
Stanley M. Shartle, P.E. & L.S.

The azimuths and coordinates used herein are based on the following elements determined by Fuller & Associates for the Indiana Department of Natural Resources: Grid coordinates of B.M. Station WLP TTA-5: $x=700,567.520'$, $y=790,534.549'$; Grid azimuth to B.M. Station WLP TTA-4 = $59^\circ23'42''147$.

August 16, 1978

Made by

STANLEY M. SHARTLE

under an appointment by the Surveyor of Hendricks County pursuant to §5 of the Perpetual Corner Records Act of 1965 (Ch. 319) to administer said act.

LOCATION OF MONUMENT: SECTION 6, T. 14 N., R. 2 E.

Found: ☒ Set: ☐ Depth: 6 1/2 inches

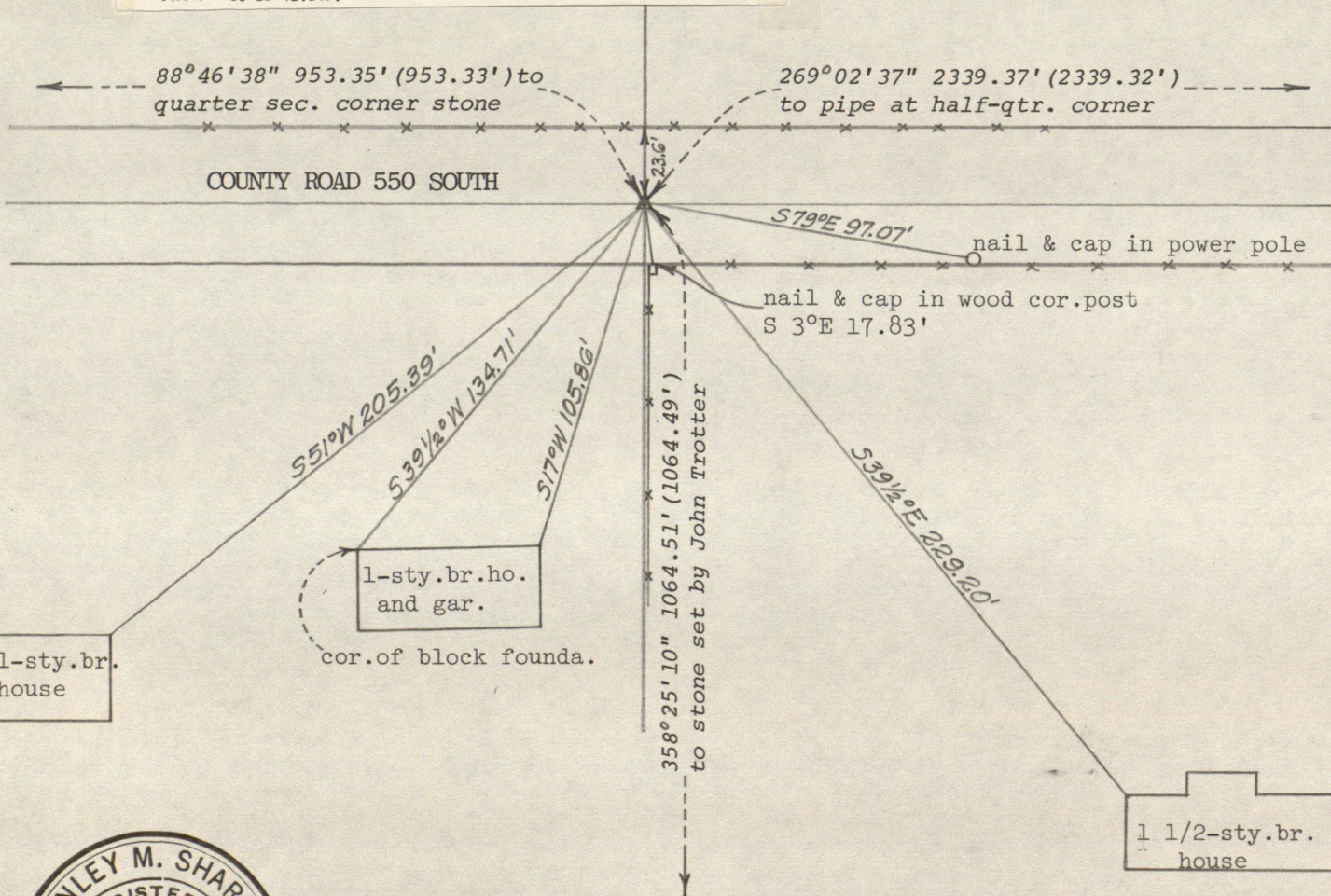
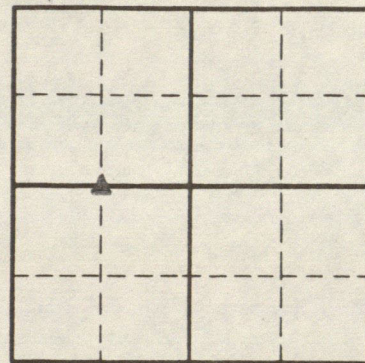
Description: greenish gray stone

$x = 704,035.81'$, $y = 795,703.11'$

Indiana Coordinate System, West Zone

Distances shown are at ground level excepting those in parentheses which are grid distances. Azimuths are grid azimuths measured clockwise from the south through 360° . Bearings to reference objects are magnetic unless a contrary mode is shown.

The azimuths and coordinates used herein are based on the following elements determined by Fuller & Associates for the Indiana Department of Natural Resources: Grid coordinates of B.M. Station WLP TTA-5: $x=700,567.520'$, $y=790,534.549'$; Grid azimuth to B.M. Station WLP TTA-4 = $59^\circ 23' 42'' 147$.



Stanley M. Shartle
Stanley M. Shartle, P.E. & L.S.

Date: August 19, 1978

Made by

STANLEY M. SHARTLE

under an appointment by the Surveyor of Hendricks County pursuant to §5 of the Perpetual Corner Records Act of 1965 (Ch. 319) to administer said act.

LOCATION OF MONUMENT: SECTION 6, T. 14 N., R. 2 E.

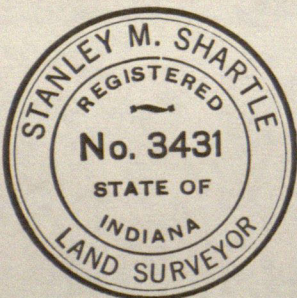
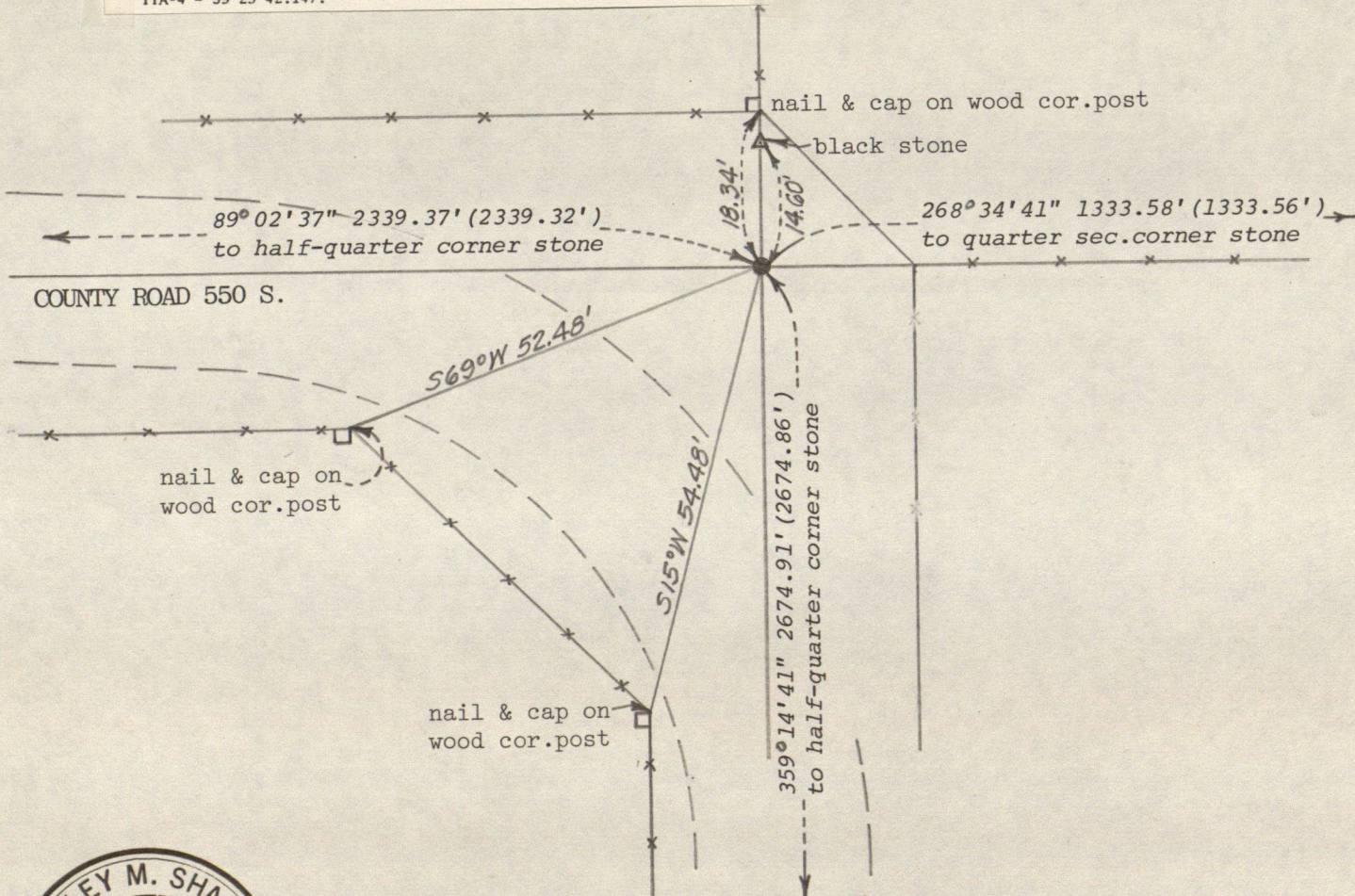
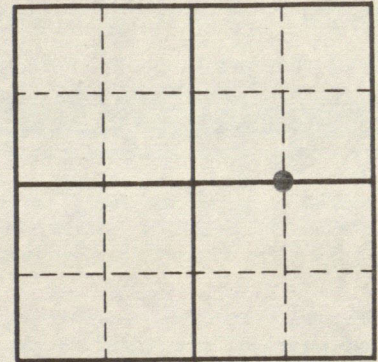
Found: ☒ Set: ☐ Depth: 6 inches

Description: pipe

$x = 706,374.81'$, $y = 795,742.15'$
Indiana Coordinate System, West Zone

Distances shown are at ground level excepting those in parentheses which are grid distances. Azimuths are grid azimuths measured clockwise from the south through 360° . Bearings to reference objects are magnetic unless a contrary mode is shown.

The azimuths and coordinates used herein are based on the following elements determined by Fuller & Associates for the Indiana Department of Natural Resources: Grid coordinates of B.M. Station WLP TTA-5: $x=700,567.520'$, $y=790,534.549'$; Grid azimuth to B.M. Station WLP TTA-4 = $59^\circ 23' 42'' 147$.



Stanley M. Shartle
Stanley M. Shartle, P.E. & L.S.

Date: August 19, 1978

Made by

STANLEY M. SHARTLE

under an appointment by the Surveyor of Hendricks County pursuant to §5 of the Perpetual Corner Records Act of 1965 (Ch. 319) to administer said act.

LOCATION OF MONUMENT: SECTION 6, T. 14 N., R. 2 E.

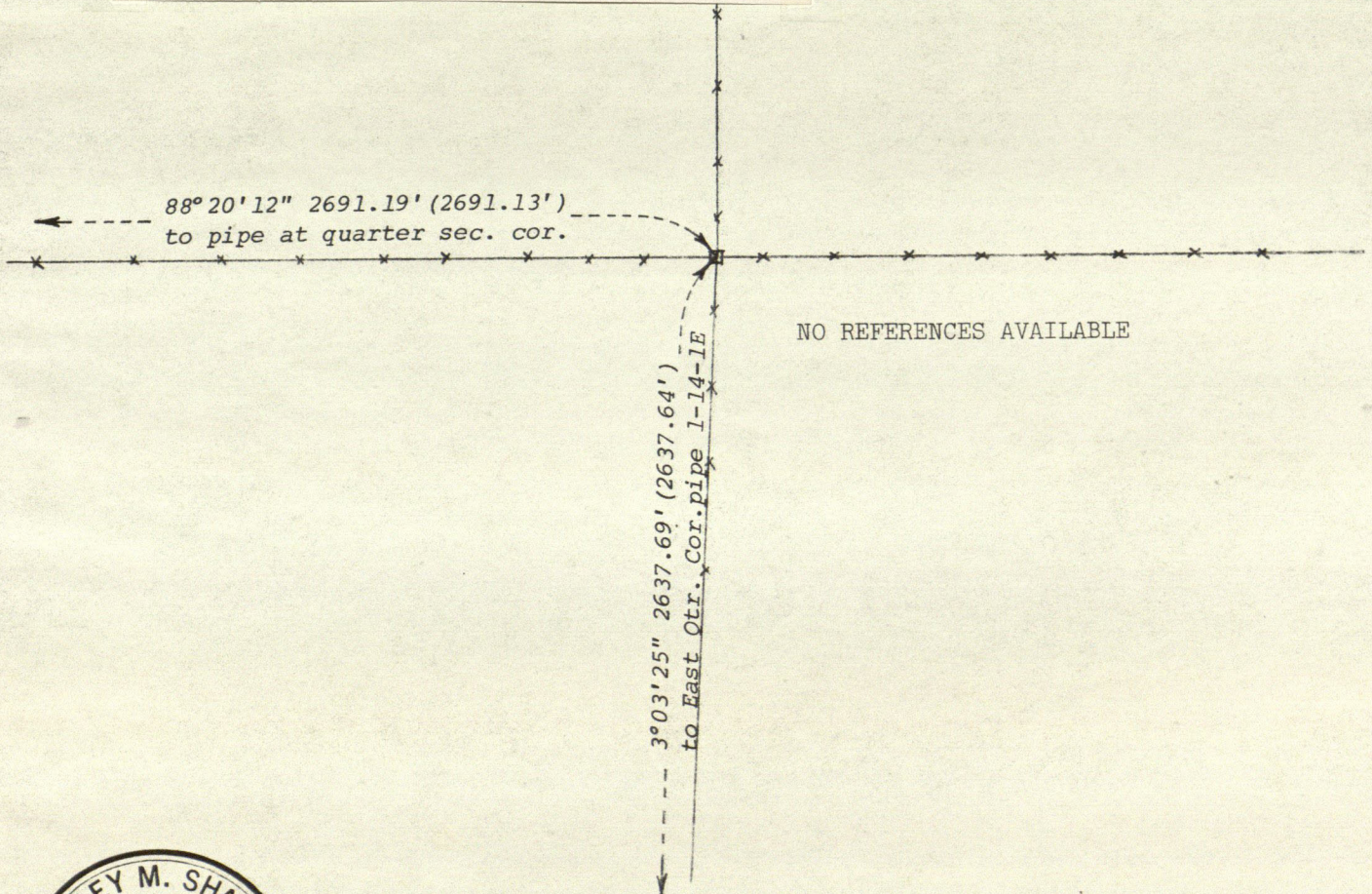
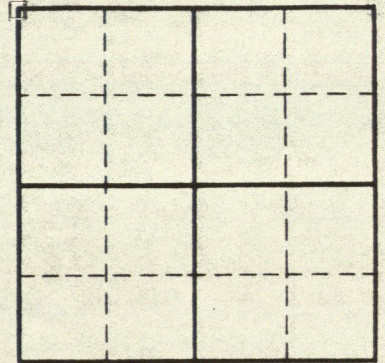
Found: ☒ Set: ☐ Depth: above ground

Description: + cut on top of conc. corner post

$x = 703,222.37'$, $y = 798,371.09'$
Indiana Coordinate System, West Zone

Distances shown are at ground level excepting those in parentheses which are grid distances. Azimuths are grid azimuths measured clockwise from the south through 360° . Bearings to reference objects are magnetic unless a contrary mode is shown.

The azimuths and coordinates used herein are based on the following elements determined by Fuller & Associates for the Indiana Department of Natural Resources: Grid coordinates of B.M. Station WLP TTA-5: $x=700,567.520'$, $y=790,534.549'$; Grid azimuth to B.M. Station WLP TTA-4 = $59^\circ 23' 42'' 147$.



Stanley M. Shartle
Stanley M. Shartle, P.E. & L.S.

Date: August 19, 1978

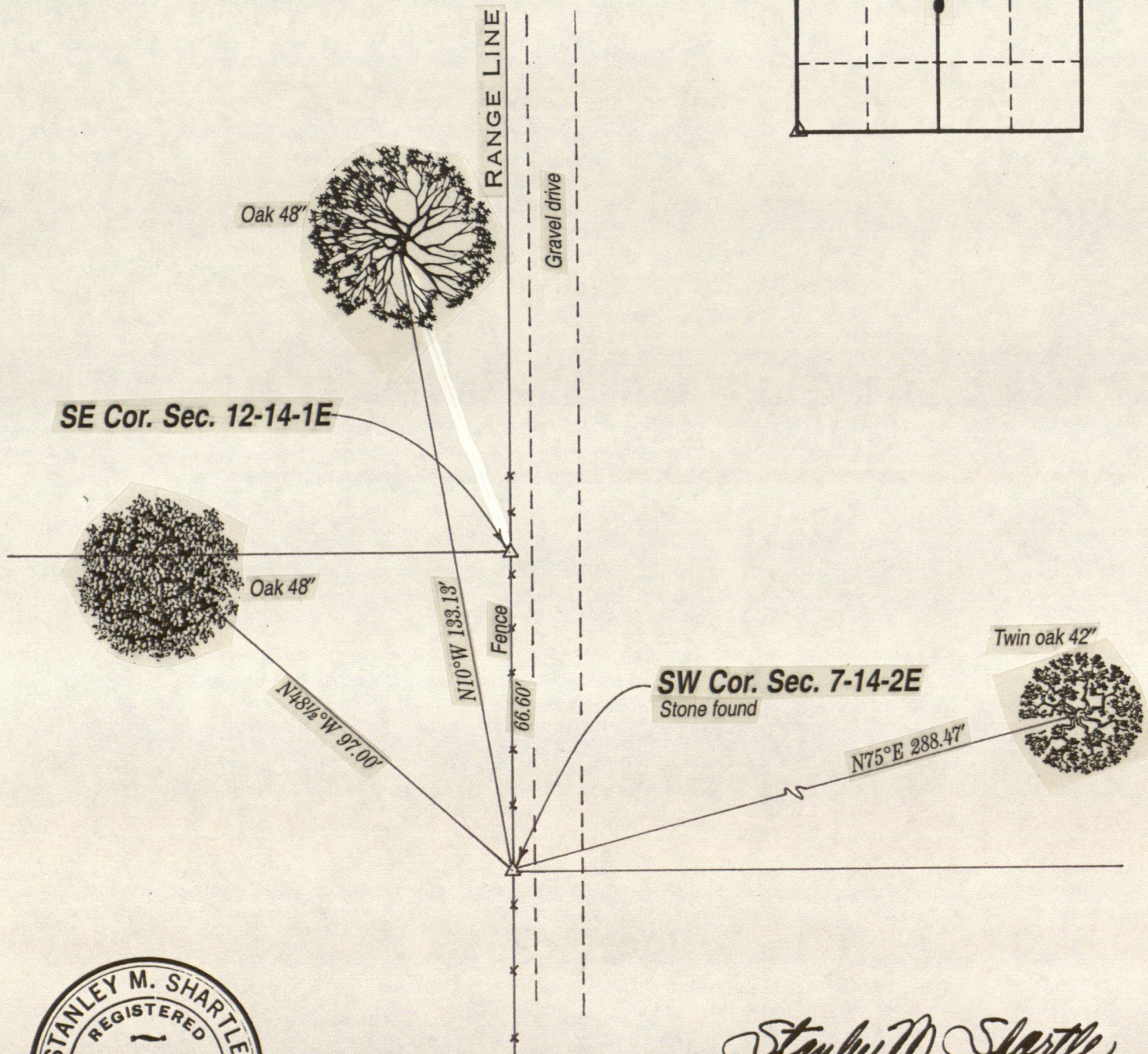
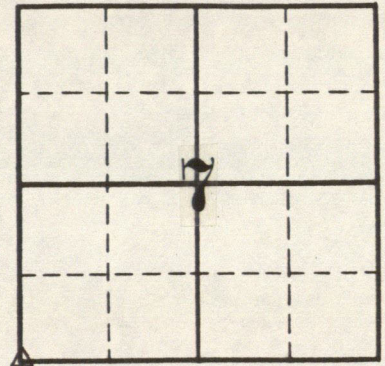
RECORD OF CORNER

LOCATION OF MONUMENT: SECTION 7, T. 14 N., R. 2 E.

Found: ☒ Set: ☐ Depth: 1 inch

Description: Stone

Bearings to reference objects are magnetic unless a contrary mode is shown.



Stanley M. Shartle
Stanley M. Shartle, P.E. & L.S.

Date: January 3, 2000

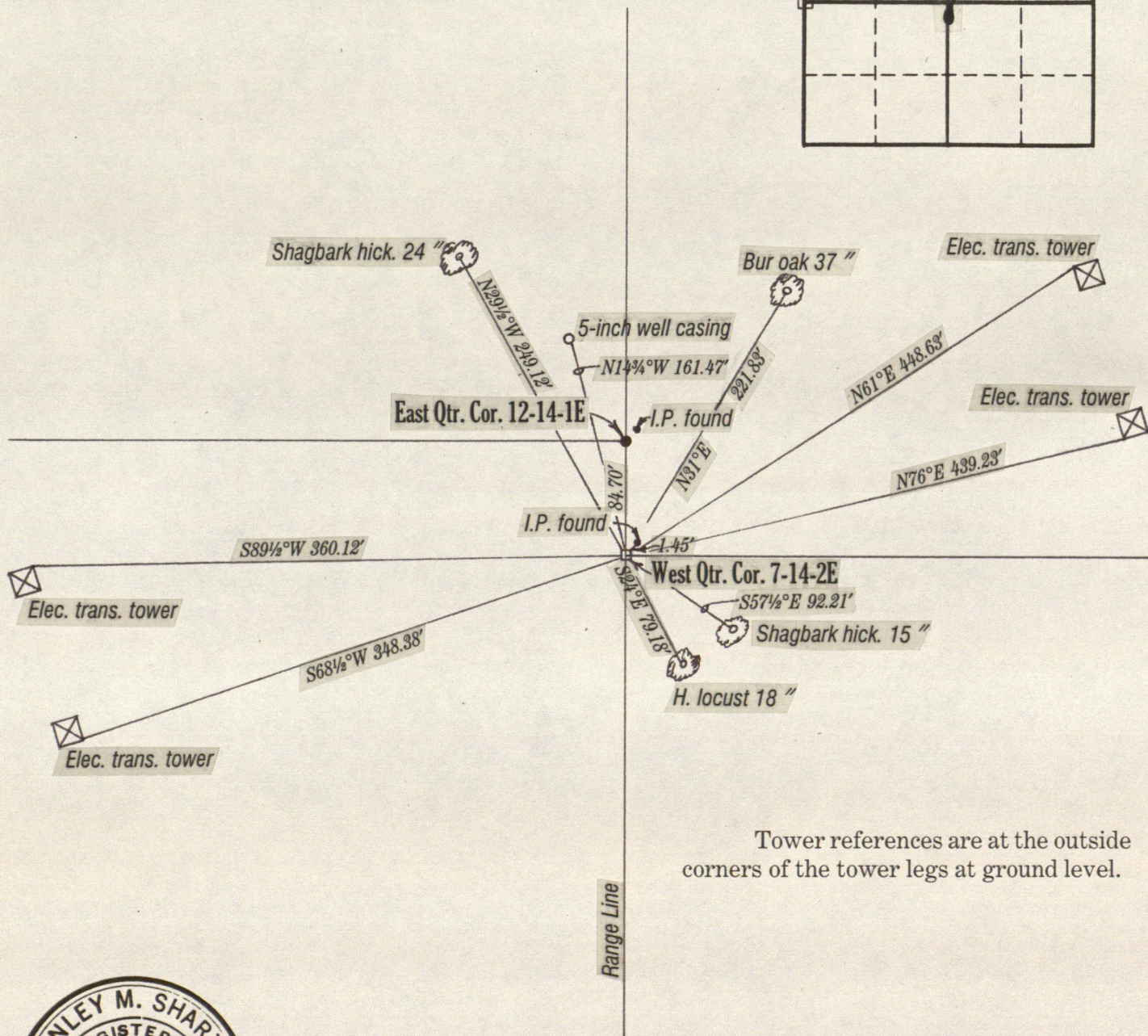
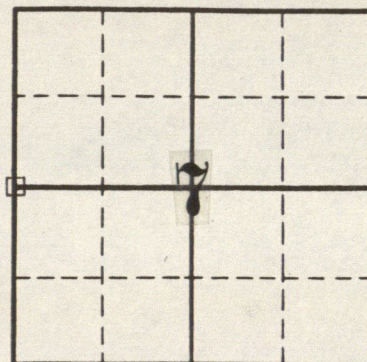
RECORD OF CORNER

LOCATION OF MONUMENT: SECTION 7, T. 14 N., R. 2 E.

Found: Set: ☒ Depth: Flush

Description: Rebar in 5x5x30-inch concrete mon't.

Bearings to reference objects are magnetic unless a contrary mode is shown.



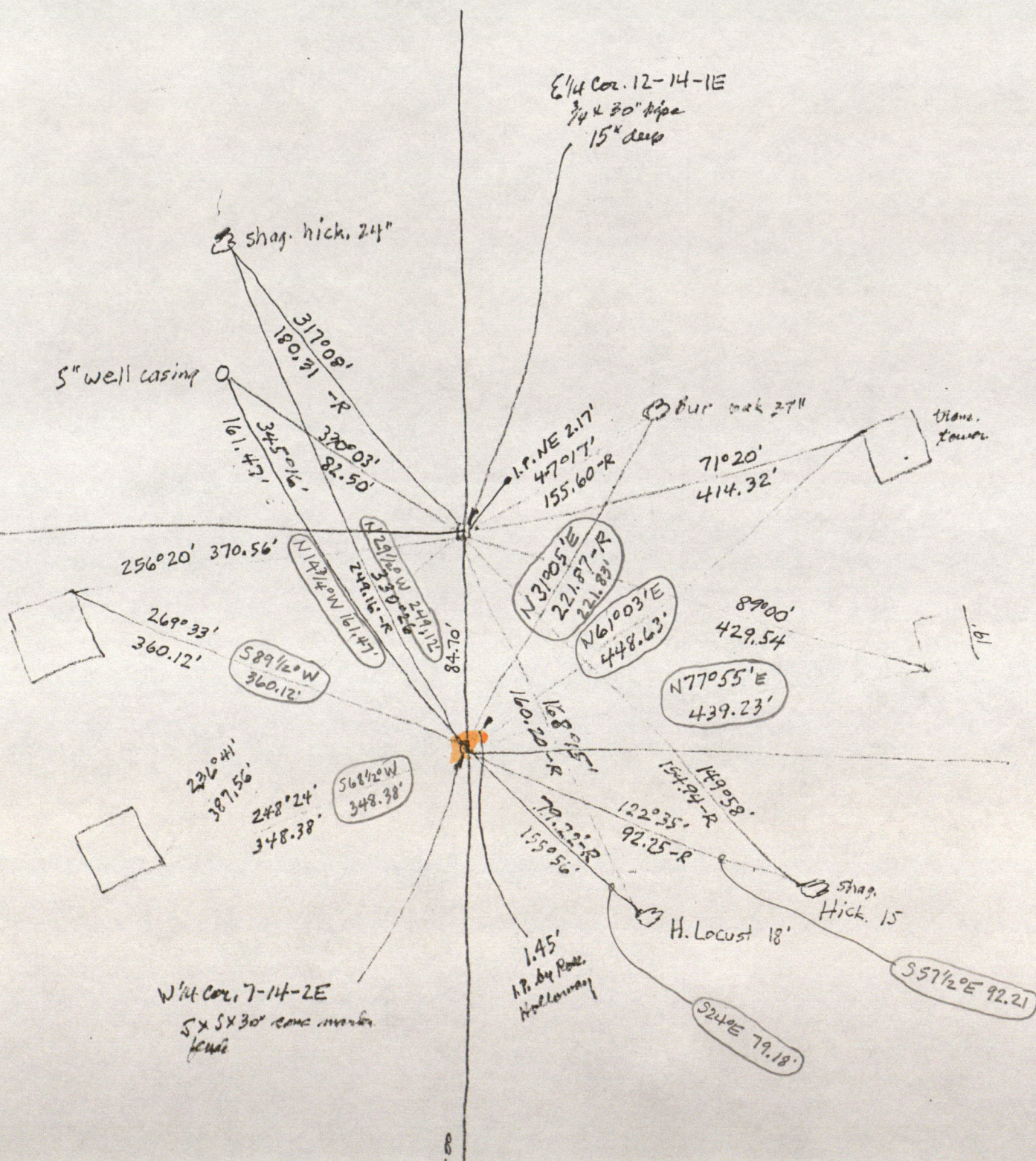
Tower references are at the outside corners of the tower legs at ground level.



Stanley M. Shartle
Stanley M. Shartle, P.E. & L.S.

Date: December 23, 1999

Nov. 1, 1999



Made by

STANLEY M. SHARTLE

under an appointment by the Surveyor of Hendricks County pursuant to §5 of the Perpetual Corner Records Act of 1965 (Ch. 319) to administer said act.

LOCATION OF MONUMENT: SECTION 8, T. 14 N., R. 2 E.

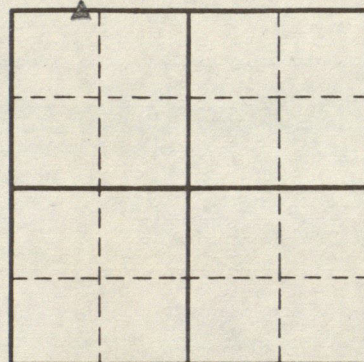
Found: ☒ Set: ☐ Depth: about 5 inches

Description: see below

$x = 708,949.74'$, $y = 793,153.59'$

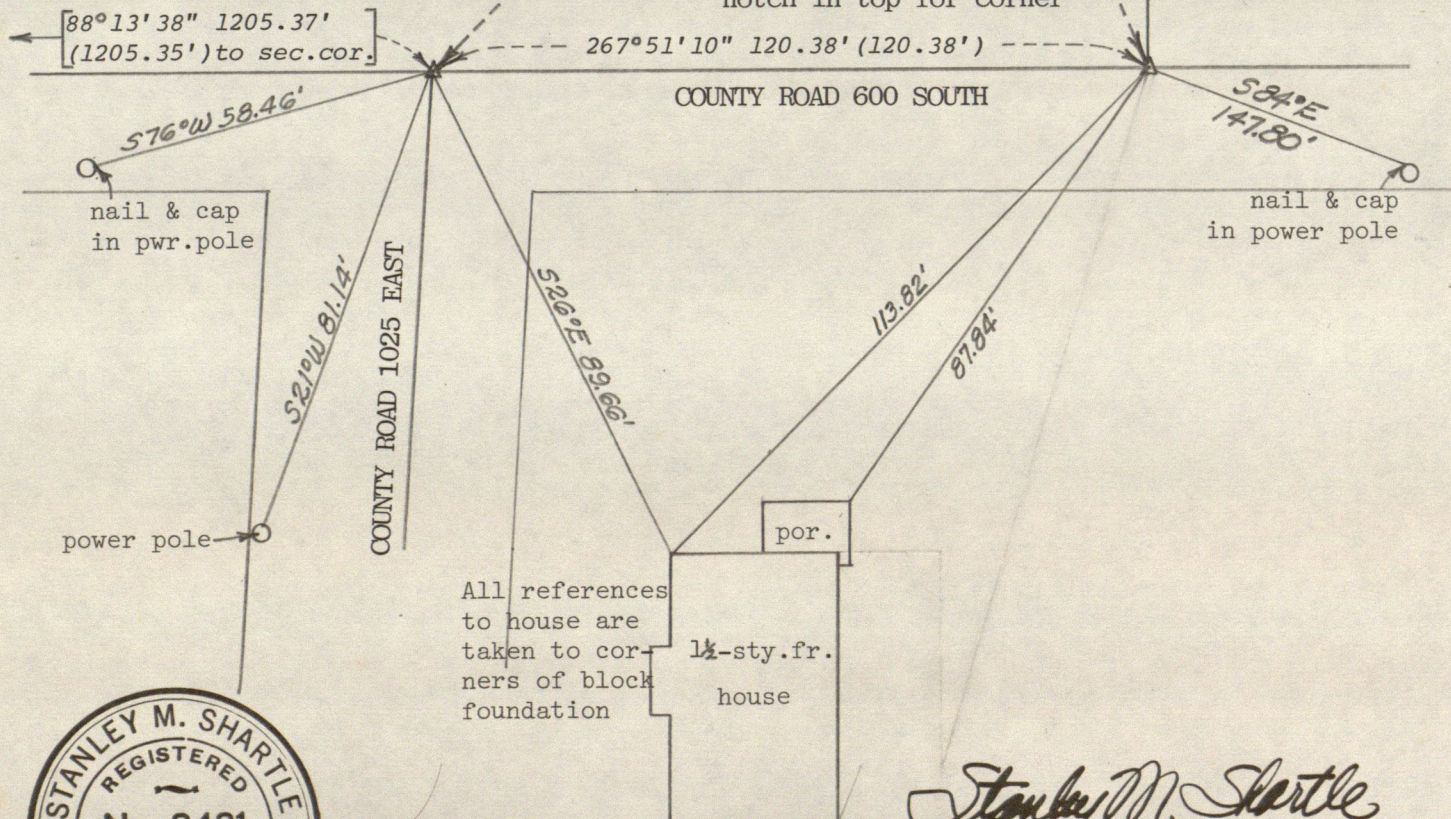
Indiana Coordinate System, West Zone

Distances shown are at ground level excepting those in parentheses which are grid distances. Azimuths are grid azimuths measured clockwise from the south through 360° . Bearings to reference objects are magnetic unless a contrary mode is shown.



stone $4\frac{1}{2} \times 6 \times 7$ " set by John W. Trotter in the Kellum estate, found and replaced by a limestone $8 \times 14 \times 15$ "

SE cor. $W\frac{1}{2}$ SW $\frac{1}{4}$ 5-14-2E
stone $5\frac{1}{2} \times 8 \times 14$ " found & replaced by limestone $10 \times 18 \times 38$ " with small notch in top for corner



All references to house are taken to corners of block foundation

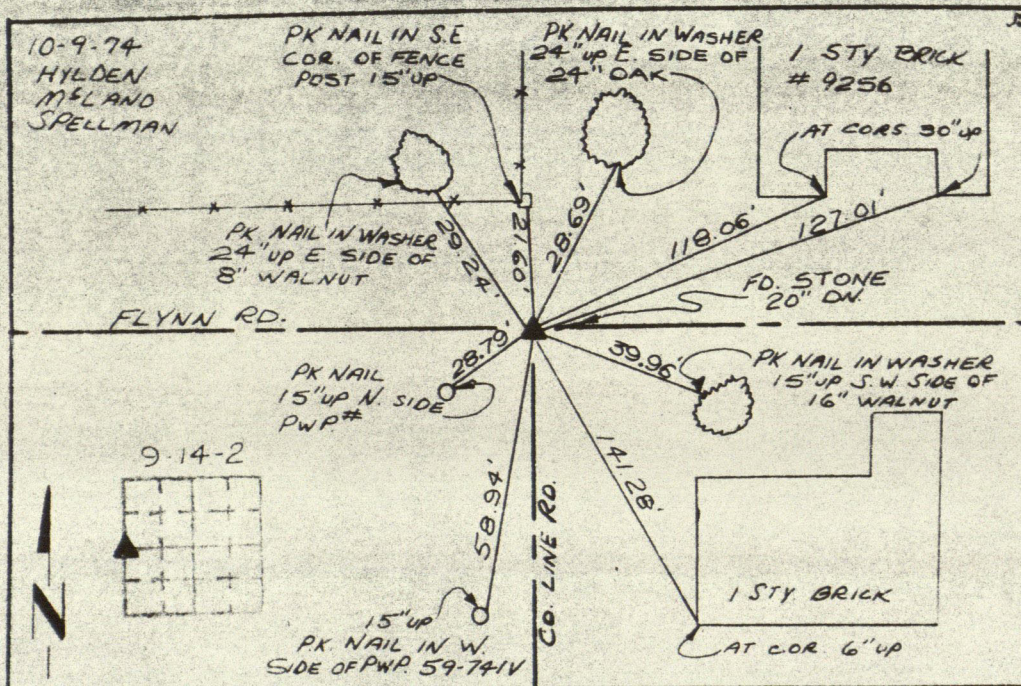
1 1/2-sty. fr. house

Stanley M. Shartle
Stanley M. Shartle, P.E. & L.S.



The azimuths and coordinates used herein are based on the following elements determined by Fuller & Associates for the Indiana Department of Natural Resources: Grid coordinates of B.M. Station WLP TTA-5: $x=700,567.520'$, $y=790,534.549'$; Grid azimuth to B.M. Station WLP TTA-4 = $59^\circ 23' 42'' 147$.

August 19, 1978



9-14-2E

SECTION CORNER RECORD MARION COUNTY, INDIANA

Sec 16 T. 14 R. 2

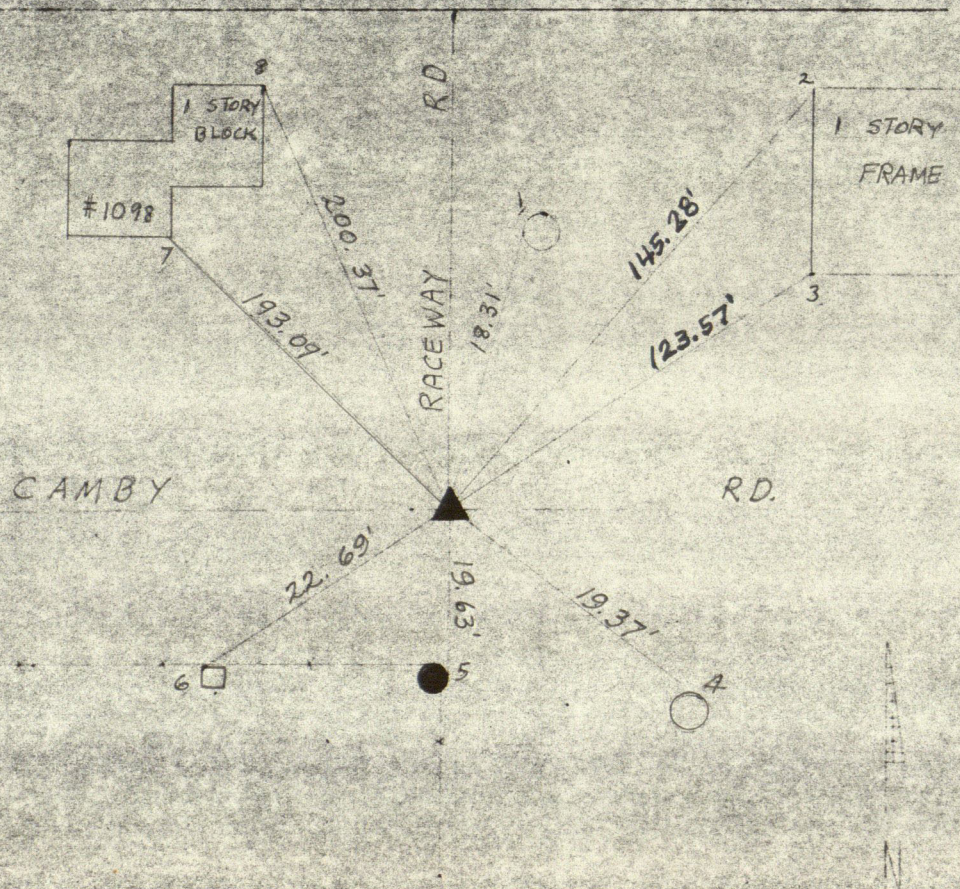
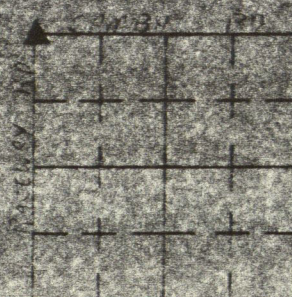
DATE 10/15/76

CREW P. G. MILLER

Inst. 6000 Rod 1/2" ALUMINUM

TYPE of MARKER 1" Steel Pin Cond of MARKER G.O.D.

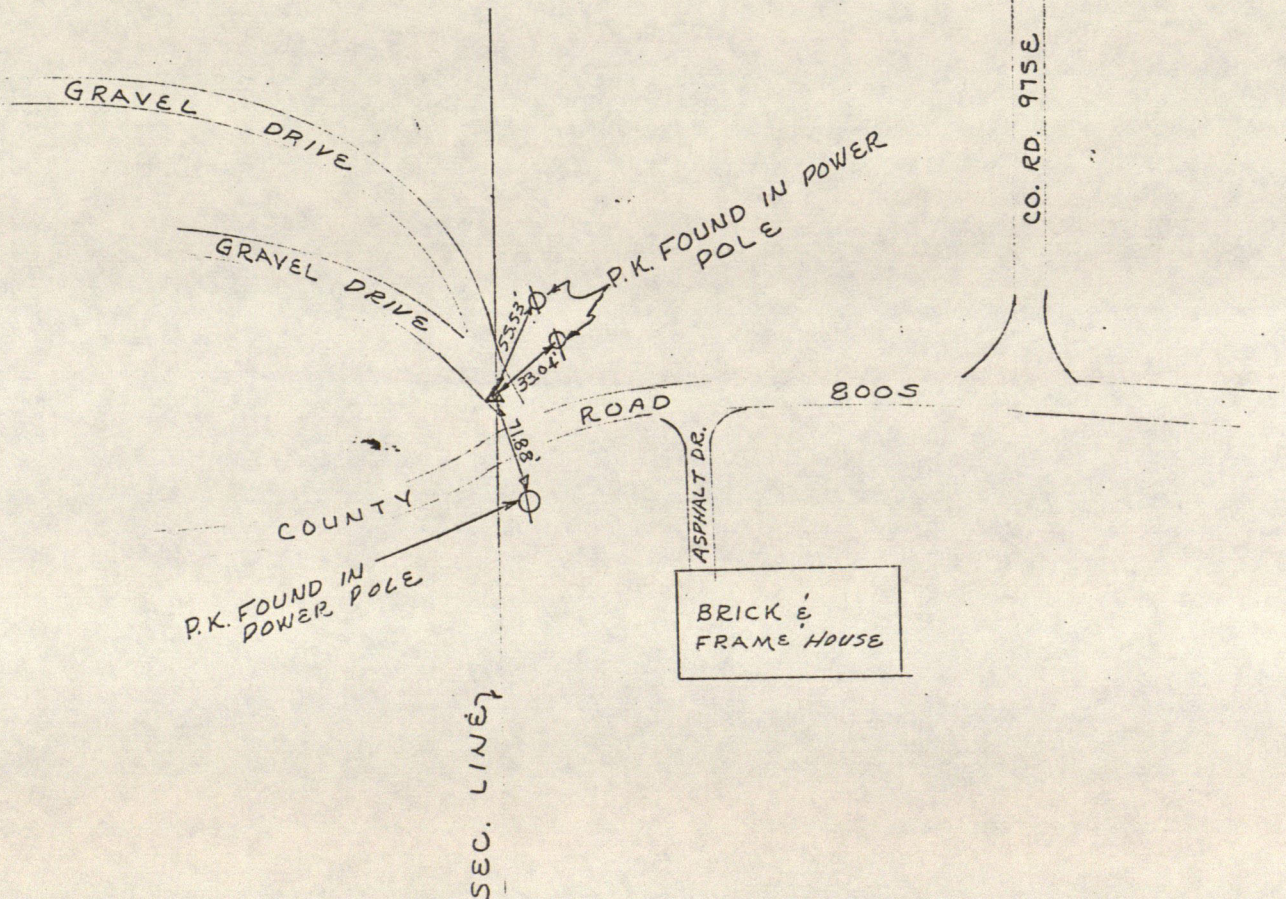
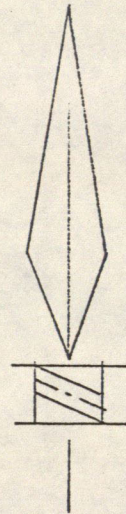
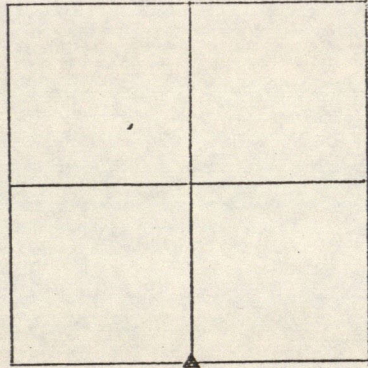
METHOD of ESTABLISHMENT PLANNED COUNTY TIES 7-24-63



REFERENCE	DISTANCE	DESCRIPTION
1	13.31	ROAD NAIL WEST SIDE PWP# 7 14
2	145.28	CORNER of CONC. BLOCK 6" UP
3	23.57	CORNER of CONC. BLOCK 6" UP
4	19.37	ROAD NAIL EAST SIDE PWP# 7 14
5	18.31	ROAD NAIL EAST SIDE FENCE POST 23" UP
6	22.69	ROAD NAIL NORTHWEST CORNER FENCE POST 34" UP
7	193.09	CORNER of CONC. BLOCK 8" UP
8	200.31	CORNER of CONC. BLOCK 30" UP

Section 18 - 14N-2E

South Half mile



Iron pipe found 4" long in bad condition. Railroad spike set in place of iron pipe. Iron pipe laid burried horizontally by railroad spike.

9/20/78 S. Maxwell & R. Shambaugh

W² Buried in NS cor post
 Red Oak 74" N5°E 8 Lbs
 Soft Maple 15" N7°E 48½ lbs
 " " 9" N45°E 53 lbs

Sⁿ
 Walnut N34°W 79½ lbs
 " S 1°E 38 lbs
 Maple 12" N10°E 0.67 lbs
 Iron pipe N 0.58 lbs

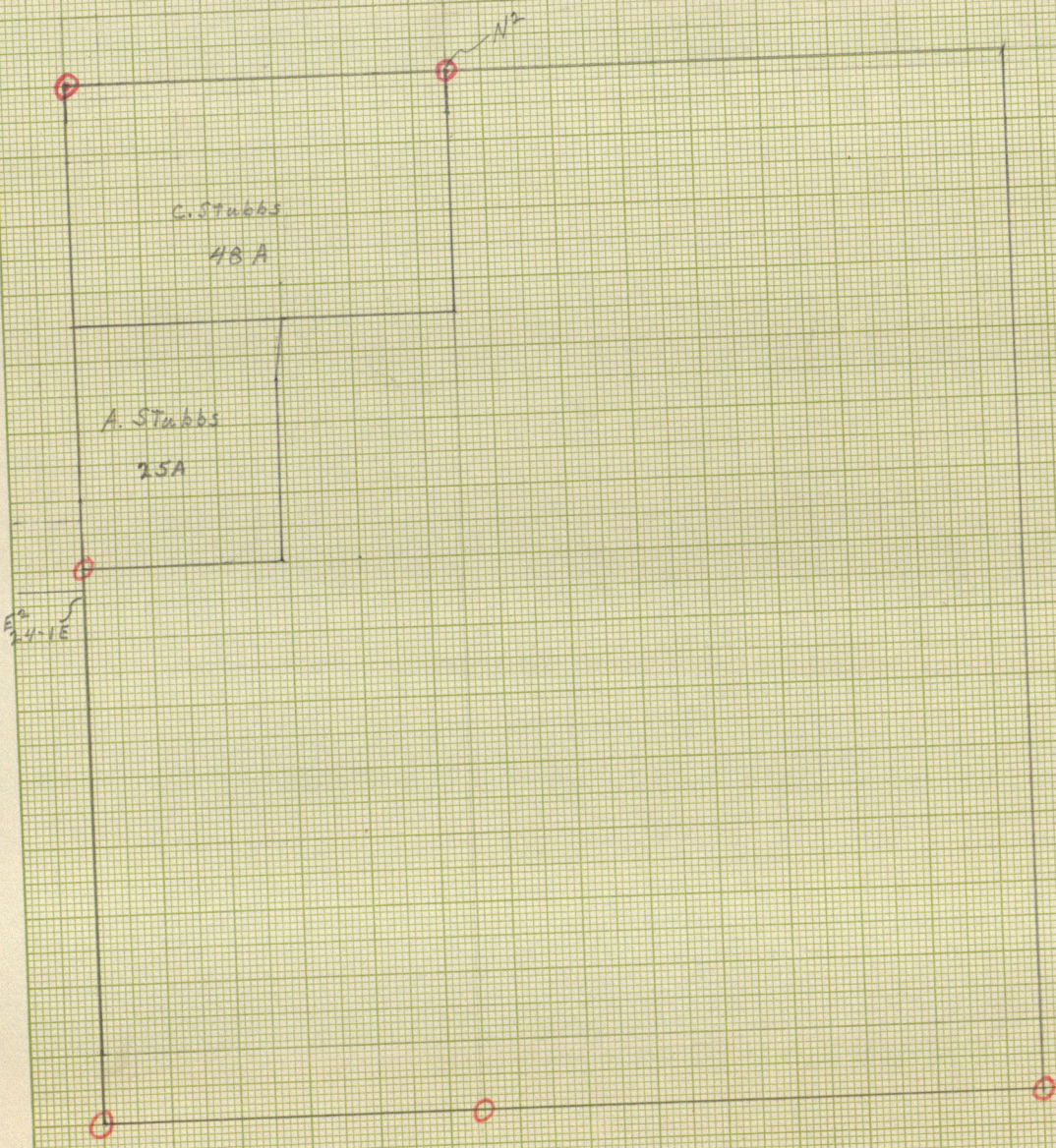
SE & SW cor. found in 1913 not with.

N² Stone 8x10x12 ±
 Paver pole S70°E 96.5'
 " " S10°E 74.3'
 Stone W 13.8'
 6x12x12 limestone

NW Cor 19-14-2E
 8 driven well N 53.8'
 18" C. Perry S 16.0'
 30" Oak S 47.0'
 8x16x24" Stone S10°W 52.3"
 18x18 Stones N80°E 50.3'

Section 19-14-2E

From the Records of John W. Scatterday



8-41-08
Ct. N NW 1/4 Stone 4X10X12 Maple S 41 1/2 E

Section 20-14-2E
From the Records of John W. Scatterday

20-14-2E

59.96 ch.

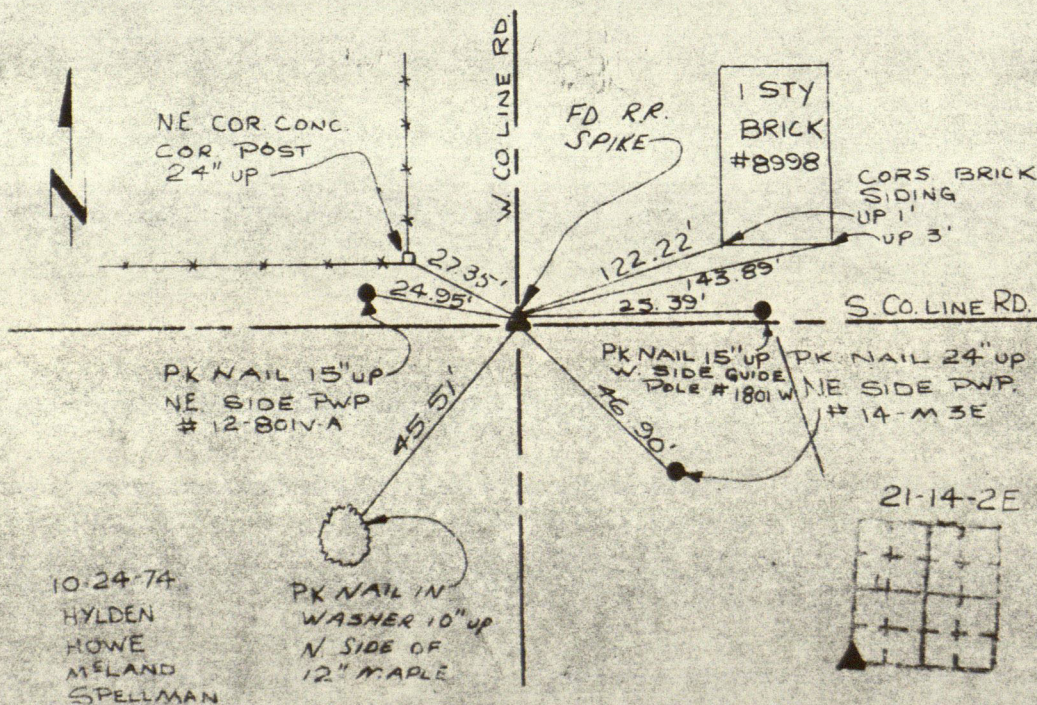
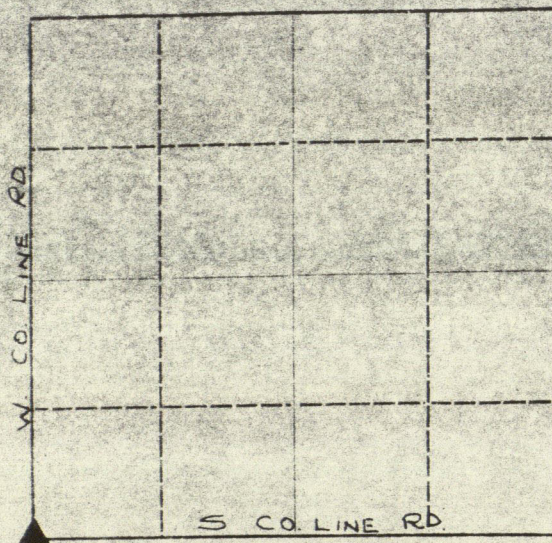
0

INDEX TO LANDMARKS

THE MARION COUNTY SURVEYOR'S OFFICE

SECTION 21 TOWNSHIP 14 N., RANGE 2 E.

REMARKS

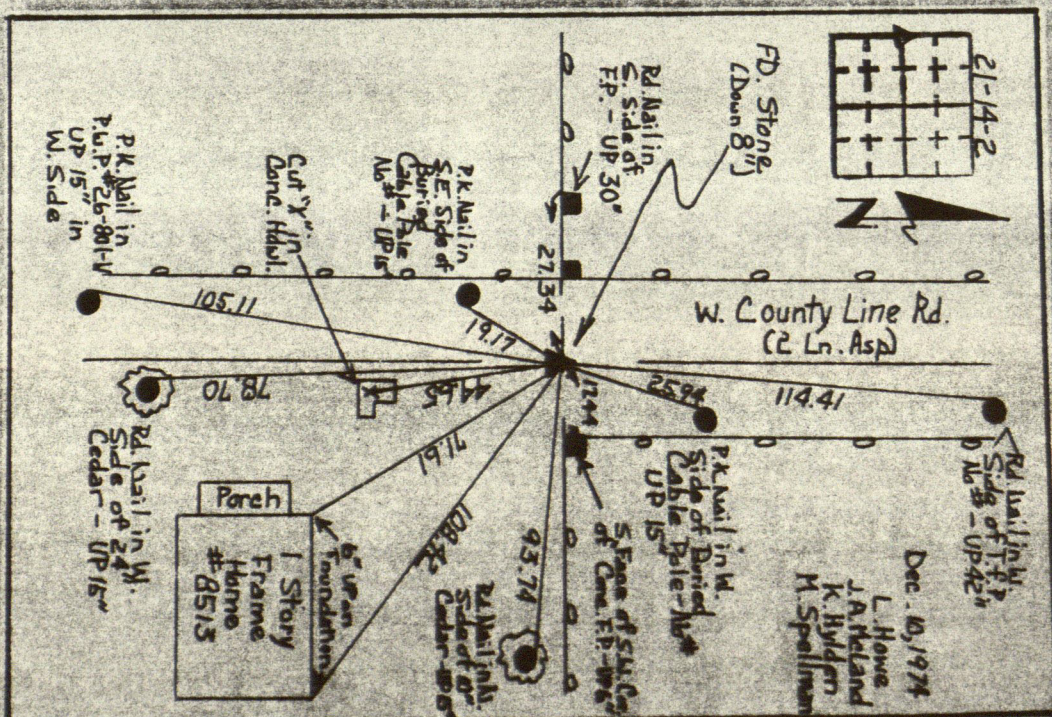
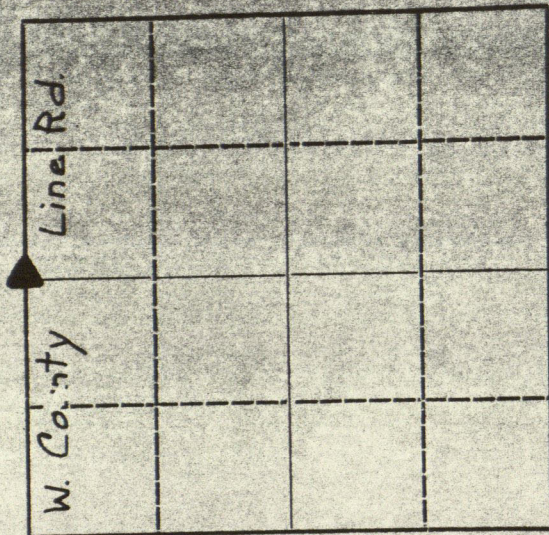


INDEX TO LANDMARKS

THE MARION COUNTY SURVEYOR'S OFFICE

SECTION 21 TOWNSHIP 19 N., RANGE 2 E.

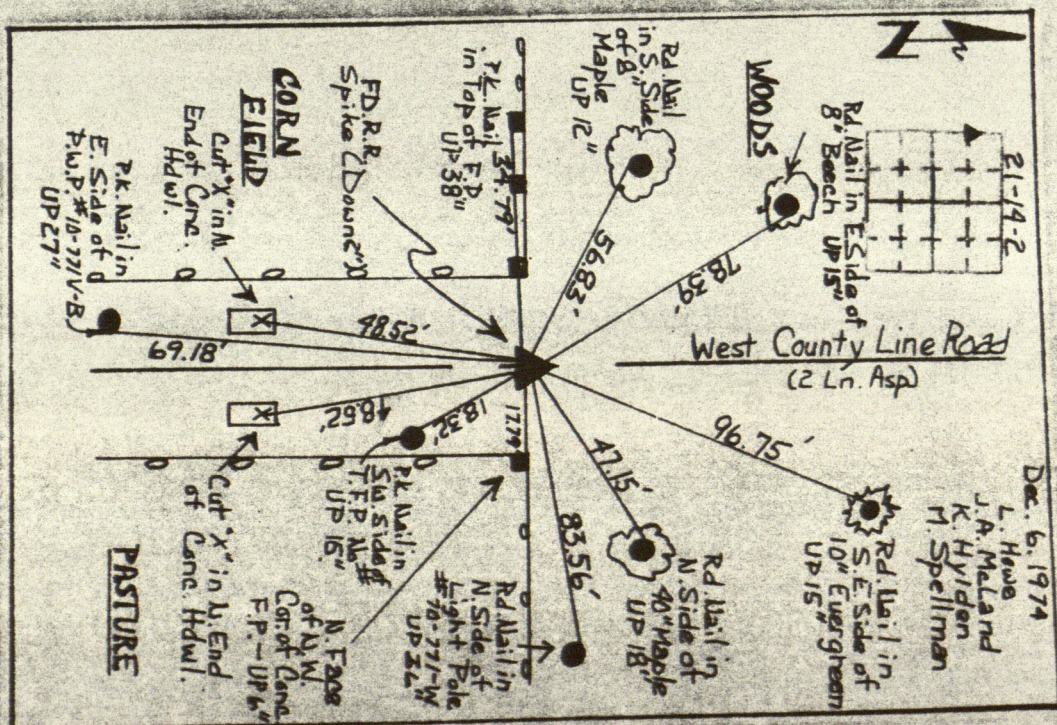
REMARKS



27

SECTION 21 TOWNSHIP 14 N., RANGE 2 E.

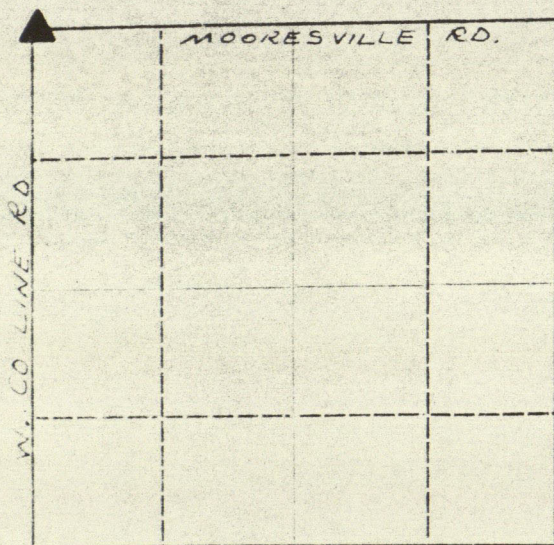
W. County Line Rd.



INDEX TO LANDMARKS

THE MARION COUNTY SURVEYOR'S OFFICE

SECTION 21 TOWNSHIP 14 N., RANGE 2 E.



REMARKS

