

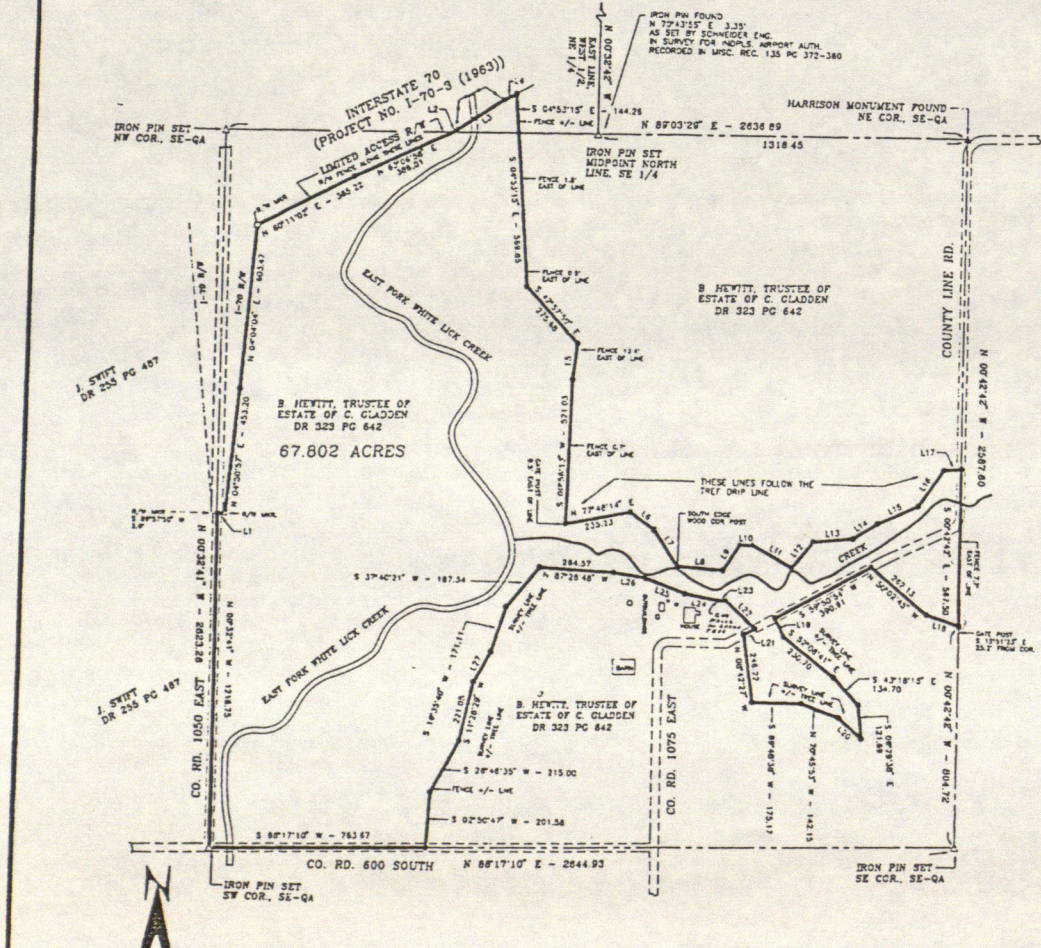
Pt. E² 5-14-2E

AIRPORT

1428

PART OF THE SOUTHEAST QUARTER AND PART OF THE WEST HALF OF THE NORTHEAST QUARTER OF SECTION 5, TOWNSHIP 14 NORTH, RANGE 2 EAST, HENDRICKS COUNTY, INDIANA.

PER TITLE 865, ARTICLE 1-1, CHAP. 12, IAC. THIS IS A CLASS "D" SURVEY (TU = +/- 1.0 FOOT).



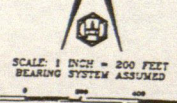
LINE	BEARING	DISTANCE
L1	N 89°37'00" E	28.05
L2	N 82°08'58" E	14.68
L3	N 54°35'17" E	201.11
L4	N 80°18'57" E	49.28
L5	S 02°57'13" W	125.22
L6	S 52°46'28" E	108.79
L7	S 34°07'48" E	155.72
L8	S 88°54'30" E	162.09
L9	N 31°18'00" E	109.50
L10	N 88°55'18" E	45.28
L11	S 61°27'44" E	160.83
L12	N 34°05'24" E	120.87
L13	N 82°32'24" E	142.88
L14	N 50°05'42" E	102.34
L15	N 84°42'08" E	139.18
L16	N 34°03'03" E	155.08
L17	N 82°50'47" E	61.77
L18	N 72°02'08" W	121.51
L19	S 20°10'30" E	74.22
L20	N 48°55'04" W	111.98
L21	N 59°55'54" E	45.45
L22	N 48°17'08" W	144.35
L23	S 89°24'01" W	30.20
L24	N 78°48'54" W	118.05
L25	N 69°36'20" W	151.61
L26	N 87°29'02" W	118.29
L27	S 27°13'52" W	122.24

WATERS DESCRIPTION
 The Southeast Quarter of Section 5, Township 14 North, Range 2 East, Hendricks County, Indiana, more or less, containing 166.400 acres, more or less.

EXCEPT that part hereon for 1-70 for highway purposes.

ALSO:
 Part of the Southeast Quarter of the Northeast Quarter of Section 5, Township 14 North, Range 2 East, Hendricks County, Indiana, more or less, containing 166.400 acres, more or less, as follows: to wit: Beginning at a point on the south line of said Southeast Quarter, north 89 degrees 37 minutes 00 seconds east 28.05 feet to a point on the south line of said Southeast Quarter, north 82 degrees 08 minutes 58 seconds east 14.68 feet to a point on the south line of said Southeast Quarter, north 54 degrees 35 minutes 17 seconds east 201.11 feet to a point on the south line of said Southeast Quarter, north 80 degrees 18 minutes 57 seconds east 49.28 feet to a point on the south line of said Southeast Quarter, south 02 degrees 57 minutes 13 seconds west 125.22 feet to a point on the south line of said Southeast Quarter, south 52 degrees 46 minutes 28 seconds east 108.79 feet to a point on the south line of said Southeast Quarter, south 34 degrees 07 minutes 48 seconds east 155.72 feet to a point on the south line of said Southeast Quarter, south 88 degrees 54 minutes 30 seconds east 162.09 feet to a point on the south line of said Southeast Quarter, north 31 degrees 18 minutes 00 seconds east 109.50 feet to a point on the south line of said Southeast Quarter, north 88 degrees 55 minutes 18 seconds east 45.28 feet to a point on the south line of said Southeast Quarter, south 61 degrees 27 minutes 44 seconds east 160.83 feet to a point on the south line of said Southeast Quarter, north 34 degrees 05 minutes 24 seconds east 120.87 feet to a point on the south line of said Southeast Quarter, north 82 degrees 32 minutes 24 seconds east 142.88 feet to a point on the south line of said Southeast Quarter, north 50 degrees 05 minutes 42 seconds east 102.34 feet to a point on the south line of said Southeast Quarter, north 84 degrees 42 minutes 08 seconds east 139.18 feet to a point on the south line of said Southeast Quarter, north 34 degrees 03 minutes 03 seconds east 155.08 feet to a point on the south line of said Southeast Quarter, north 82 degrees 50 minutes 47 seconds east 61.77 feet to a point on the south line of said Southeast Quarter, north 72 degrees 02 minutes 08 seconds west 121.51 feet to a point on the south line of said Southeast Quarter, south 20 degrees 10 minutes 30 seconds east 74.22 feet to a point on the south line of said Southeast Quarter, north 48 degrees 55 minutes 04 seconds west 111.98 feet to a point on the south line of said Southeast Quarter, north 59 degrees 55 minutes 54 seconds east 45.45 feet to a point on the south line of said Southeast Quarter, north 48 degrees 17 minutes 08 seconds west 144.35 feet to a point on the south line of said Southeast Quarter, south 89 degrees 24 minutes 01 seconds west 30.20 feet to a point on the south line of said Southeast Quarter, north 78 degrees 48 minutes 54 seconds west 118.05 feet to a point on the south line of said Southeast Quarter, north 69 degrees 36 minutes 20 seconds west 151.61 feet to a point on the south line of said Southeast Quarter, north 87 degrees 29 minutes 02 seconds west 118.29 feet to a point on the south line of said Southeast Quarter, south 27 degrees 13 minutes 52 seconds west 122.24 feet to a point on the south line of said Southeast Quarter, north 89 degrees 37 minutes 00 seconds east 28.05 feet to the point of beginning.

GLADDEN PARCEL - WOODED PORTION
 A part of the Southeast Quarter and a part of the West Half of the Northeast Quarter of Section 5, Township 14 North, Range 2 East, Hendricks County, Indiana, more or less, containing 67.802 acres, more or less, as follows: to wit: Beginning at a point on the south line of said Southeast Quarter, north 89 degrees 37 minutes 00 seconds east 28.05 feet to a point on the south line of said Southeast Quarter, north 82 degrees 08 minutes 58 seconds east 14.68 feet to a point on the south line of said Southeast Quarter, north 54 degrees 35 minutes 17 seconds east 201.11 feet to a point on the south line of said Southeast Quarter, north 80 degrees 18 minutes 57 seconds east 49.28 feet to a point on the south line of said Southeast Quarter, south 02 degrees 57 minutes 13 seconds west 125.22 feet to a point on the south line of said Southeast Quarter, south 52 degrees 46 minutes 28 seconds east 108.79 feet to a point on the south line of said Southeast Quarter, south 34 degrees 07 minutes 48 seconds east 155.72 feet to a point on the south line of said Southeast Quarter, south 88 degrees 54 minutes 30 seconds east 162.09 feet to a point on the south line of said Southeast Quarter, north 31 degrees 18 minutes 00 seconds east 109.50 feet to a point on the south line of said Southeast Quarter, north 88 degrees 55 minutes 18 seconds east 45.28 feet to a point on the south line of said Southeast Quarter, south 61 degrees 27 minutes 44 seconds east 160.83 feet to a point on the south line of said Southeast Quarter, north 34 degrees 05 minutes 24 seconds east 120.87 feet to a point on the south line of said Southeast Quarter, north 82 degrees 32 minutes 24 seconds east 142.88 feet to a point on the south line of said Southeast Quarter, north 50 degrees 05 minutes 42 seconds east 102.34 feet to a point on the south line of said Southeast Quarter, north 84 degrees 42 minutes 08 seconds east 139.18 feet to a point on the south line of said Southeast Quarter, north 34 degrees 03 minutes 03 seconds east 155.08 feet to a point on the south line of said Southeast Quarter, north 82 degrees 50 minutes 47 seconds east 61.77 feet to a point on the south line of said Southeast Quarter, north 72 degrees 02 minutes 08 seconds west 121.51 feet to a point on the south line of said Southeast Quarter, south 20 degrees 10 minutes 30 seconds east 74.22 feet to a point on the south line of said Southeast Quarter, north 48 degrees 55 minutes 04 seconds west 111.98 feet to a point on the south line of said Southeast Quarter, north 59 degrees 55 minutes 54 seconds east 45.45 feet to a point on the south line of said Southeast Quarter, north 48 degrees 17 minutes 08 seconds west 144.35 feet to a point on the south line of said Southeast Quarter, south 89 degrees 24 minutes 01 seconds west 30.20 feet to a point on the south line of said Southeast Quarter, north 78 degrees 48 minutes 54 seconds west 118.05 feet to a point on the south line of said Southeast Quarter, north 69 degrees 36 minutes 20 seconds west 151.61 feet to a point on the south line of said Southeast Quarter, north 87 degrees 29 minutes 02 seconds west 118.29 feet to a point on the south line of said Southeast Quarter, south 27 degrees 13 minutes 52 seconds west 122.24 feet to a point on the south line of said Southeast Quarter, north 89 degrees 37 minutes 00 seconds east 28.05 feet to the point of beginning.



LEGEND
 [Symbol] IRON PIN SET
 [Symbol] HARRISON MONUMENT FOUND
 [Symbol] CALCULATED CORNER BY MONUMENT
 [Symbol] FORCE LINE
 [Symbol] MONUMENT FOUND
 [Symbol] IRON PIN SET
 [Symbol] HARRISON MONUMENT FOUND
 [Symbol] CALCULATED CORNER BY MONUMENT
 [Symbol] FORCE LINE
 [Symbol] MONUMENT FOUND

CERTIFICATION
 I, Ross O. Holloway, an Indiana Registered Land Surveyor, hereby certify that, to the best of my information, knowledge and belief, this plat represents a survey as completed under my direct supervision on April 30, 1992.

Ross O. Holloway
 Indiana Registered Surveyor No. 20630
 Date: April 30, 1992

OWNER OF RECORD: BRUCE C. HEWITT, AS TRUSTEE OF THE GLADDEN TRUST AGREEMENT DATED SEPTEMBER 10, 1992.
 THERE ARE NO IMPROVEMENTS ON THE PARCEL.

GLADDEN SURVEY OF WOODED PARCEL

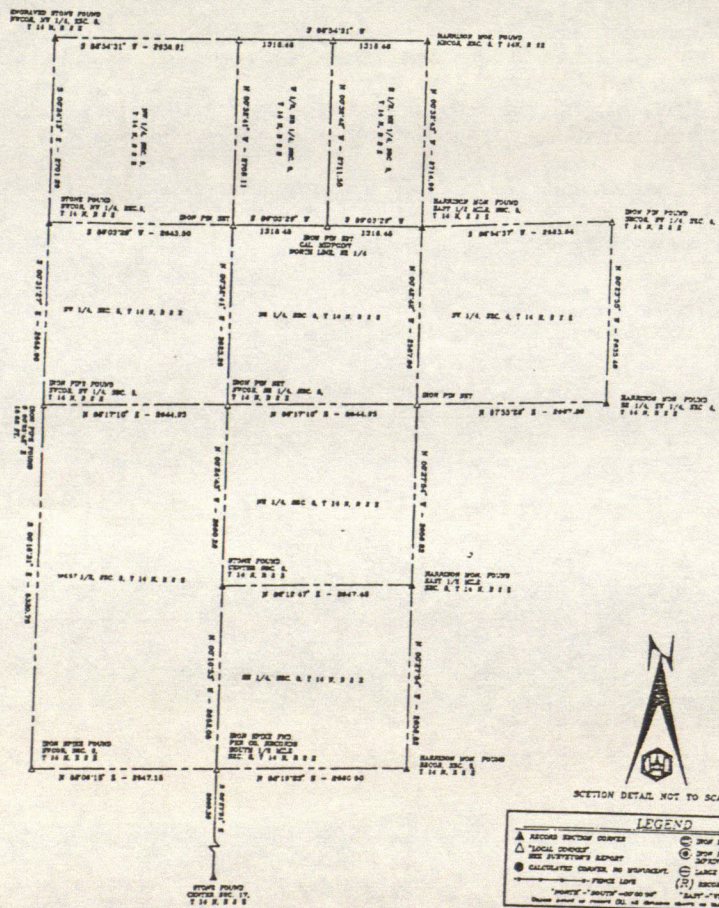
ROSS O. HOLLOWAY
 No. 20630
 I.A.S. No. 20630

CLIENT: INDIANAPOLIS AIRPORT AUTHORITY
 HOLLOWAY AND ASSOCIATES, P.C.
 MOORESVILLE, IN 46158

DATE APRIL 30, 1992 REVISIONS:
 FILE NO. 87-83 SHEET 1 OF 2

**PART OF THE SOUTHEAST QUARTER AND PART OF THE WEST HALF OF THE NORTHEAST QUARTER
OF SECTION 5, TOWNSHIP 14 NORTH, RANGE 2 EAST, HENDRICKS COUNTY, INDIANA.**

PER TITLE 855, ARTICLE 1.1, CHAP. 12, IAC, THIS IS A CLASS "D" SURVEY (TU = +/- 1.0 FOOT).



SURVEYOR'S REPORT
214 N.W.J. 87-83

This report is for the original survey of 47.802 acres, split from 288.71 acre parcel parcel as recorded in Deed Record 272 page 412 in the name of Brian C. Hewitt, Trustee of the Gladson Grantor of the West Half of the Northeast Quarter of Section 5, Township 14 North, Range 2 East, Hendricks County, Indiana.

THEORETICAL UNCERTAINTY OF MEASUREMENT: "±": The "±" of the corners of this plat (all) are within the requirements for a Class "D" (TU = +/- 1.0 feet) survey per IAC, Title 855 (Theoretical uncertainty of measurement is the radius of a circle which encompasses an area containing the probable true location of a specified point as determined by the precision of instruments and procedures employed in the performance of a survey).

Purpose of this survey is to locate or establish land boundaries, easements, rights-of-way, setback/building lines, monuments, structures, utilities, flood plains, topographic features, zoning classifications and etc. were intentionally excluded from this plat. If any of the preceding items are shown on the plat of survey it is in the intent to show only that specific entity and no others.

In accordance with Title 855, Article 1.1, Chapter 12 of the Indiana Administrative Code, the following observations and opinions are submitted regarding the "UNCERTAINTY" in the position of the lines and corners established on this survey as a result of uncertainties and/or ambiguities from:

- (a) Reference monuments of record
- (b) Title documents of record
- (c) Evidence of active lines of occupation

In regard to monuments, point (a) above, in many cases the original line and therefore existing topographical features and monuments of RECORD AND/OR ACQUIRED POSITION. In the absence of CERTAIN physical and/or record evidence that proportional measurement has been used to establish the points of division of the section.

Section corners found or established by topographical features, monuments of modern origin or proportional measurement will be labeled as "LOCAL CORNERS" on the plat of survey and are subject to note that the uncertainty which surrounds a "LOCAL CORNER" is inherently passed to any parcel corner dependent upon the position of the section corner. "UNCERTAINTY" in "LOCAL CORNERS" is not capable of elimination or, therefore, will not be addressed.

In regard to "ACTIVE LINES OF OCCUPATION", point (c) above: ACTIVE refers to lines which are marked by visible, obvious, well defined and maintained, man-made or placed objects, such as, but not limited to, fences, hedges and retaining walls. The uncertainty intended to be specific for every point along the line, and in NOY portions of the occupation line may vary from the surveyed line by a distance greater than the uncertainty cited in this report.

Following are those items pertain to the uncertainties of the lines and corners of the parcels:

Surveyor's Report
Page 2 of 2

1. The 743.87 foot south line of the parcel at the south line of the Southeast Quarter of Section 5. The 2216.75 foot west line is the west line of the Southeast Quarter of Section 5. The 567.50 foot east line is the east line of the Southeast Quarter of Section 5. All other lines (except those along the limited access right-of-way and right-of-way lines for I-70) are free lines running through the parcel parcel.
2. The limited access right-of-way lines and the right-of-way lines for I-70 Project No. I-70-1 (1981) were established using found right-of-way monuments and the limited access right-of-way fence. The lines established this survey approximately agree with the highway construction plans. Uncertainty on these lines +/- 1.0 foot.
3. Proportional measurement was used to establish missing section corners. See the section detail on page 2 for details.
4. Fencelines were found at various locations on the parcel. Fence along the 567.50 foot west line varied up to 7.7 foot east of the survey line.
5. The fence line along the limited access right-of-way for I-70 varies up to 8.5 foot northwest of the survey line.
6. All other fencelines on the parcel are interior fencelines and are not active lines of occupation. The survey lines are independent of the fencelines.

NOTE: From the above observations it is the professional opinion of this surveyor that the "uncertainties" of the lines and corners of the parcel are as follows:

- (a) Due to reference monuments: 1.0 foot except for "Local Corners" which are subject to reservations as cited in the caption to this report.
- (b) Due to title documents of record: Negligible.
- (c) Due to evidence of active lines of occupation: Up to 8.5 feet along the limited access right-of-way line for I-70. Up to 7.7 foot along the 567.50 foot east line of the parcel.

GLADSON SURVEY OF WOODED PARCEL	
CLIENT:	INDIANAPOLIS AIRPORT AUTHORITY
	HOLLOWAY and ASSOCIATES, P.C.
	MOORESVILLE, IN 46158
DATE:	APRIL 30, 1983
FILE NO.:	87-83
	SHEET 2 OF 2