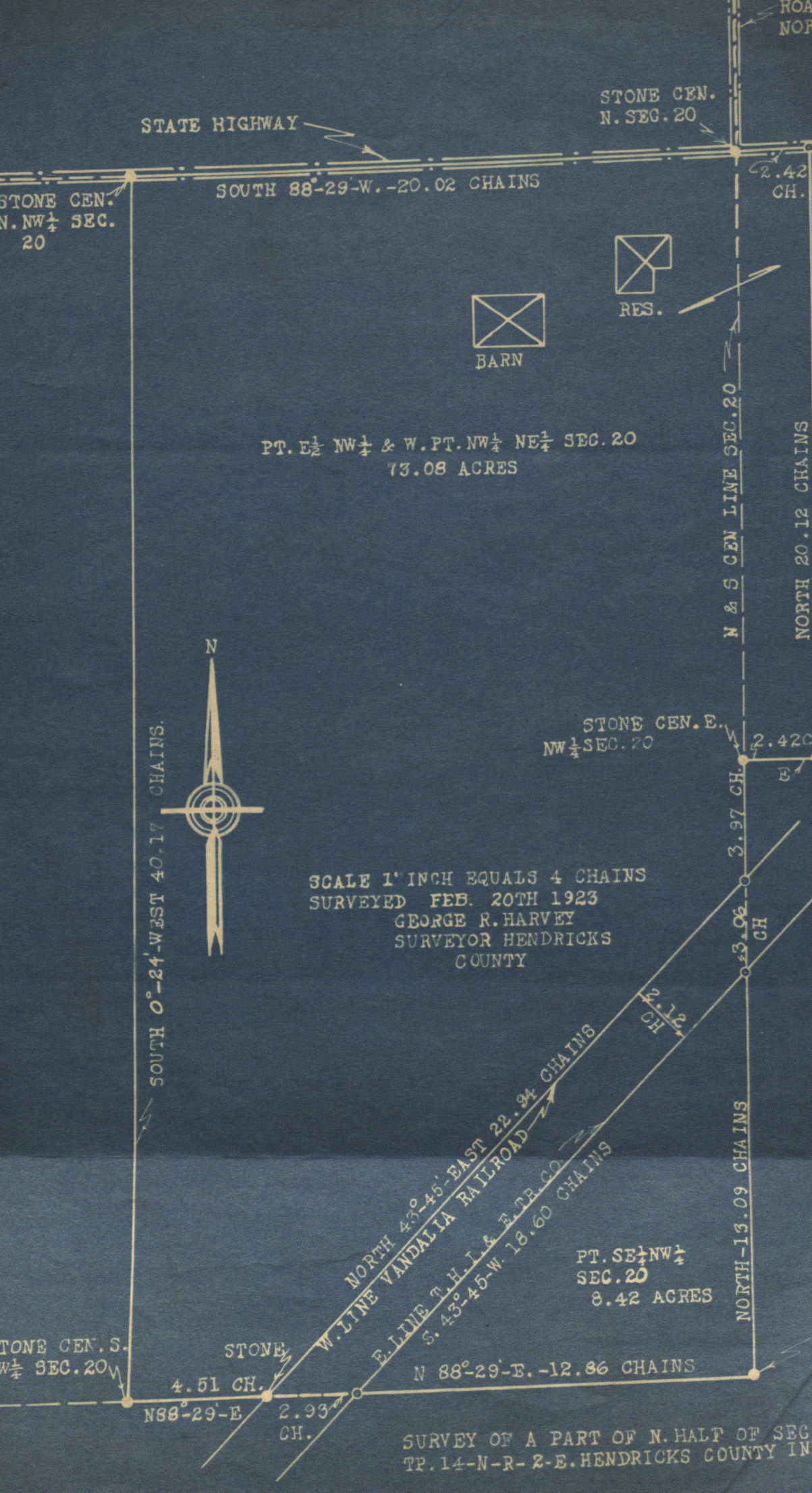


LETTER LETTER  
PT. N<sup>o</sup> 20-14-2E By Geo. R. Harvey

1432



STATE HIGHWAY

STONE CEN.  
N. SEC. 20

STONE CEN.  
N. NW 1/4 SEC.  
20

SOUTH 88°-29'-W. -20.02 CHAINS

2.42  
CH.



RES.



BARN

PT. E 1/2 NW 1/4 & W. PT. NW 1/4 NE 1/4 SEC. 20  
73.08 ACRES

N & S CEN LINE SEC. 20

NORTH 20.12 CHAINS



SOUTH 0°-24'-WEST 40.17 CHAINS.

STONE CEN. E.  
NW 1/4 SEC. 20

2.42  
CH.

SCALE 1" INCH EQUALS 4 CHAINS  
SURVEYED FEB. 20TH 1923  
GEORGE R. HARVEY  
SURVEYOR HENDRICKS  
COUNTY

3.27 CH.  
3.06 CH.

NORTH 43°-45'-EAST 22.94 CHAINS  
W. LINE VANDALIA RAILROAD  
E. LINE T. H. I. & E. TR. CO.  
S. 43°-45'-W. 18.60 CHAINS

2.12  
CH.

NORTH-13.09 CHAINS

PT. SE 1/4 NW 1/4  
SEC. 20  
8.42 ACRES

STONE CEN. S.  
W 1/4 SEC. 20

STONE

4.51 CH.

N 88°-29'-E

2.93  
CH.

N 88°-29'-E. -12.86 CHAINS

SURVEY OF A PART OF N. HALF OF SEC.  
TP. 14-N-R-2-E. HENDRICKS COUNTY IN