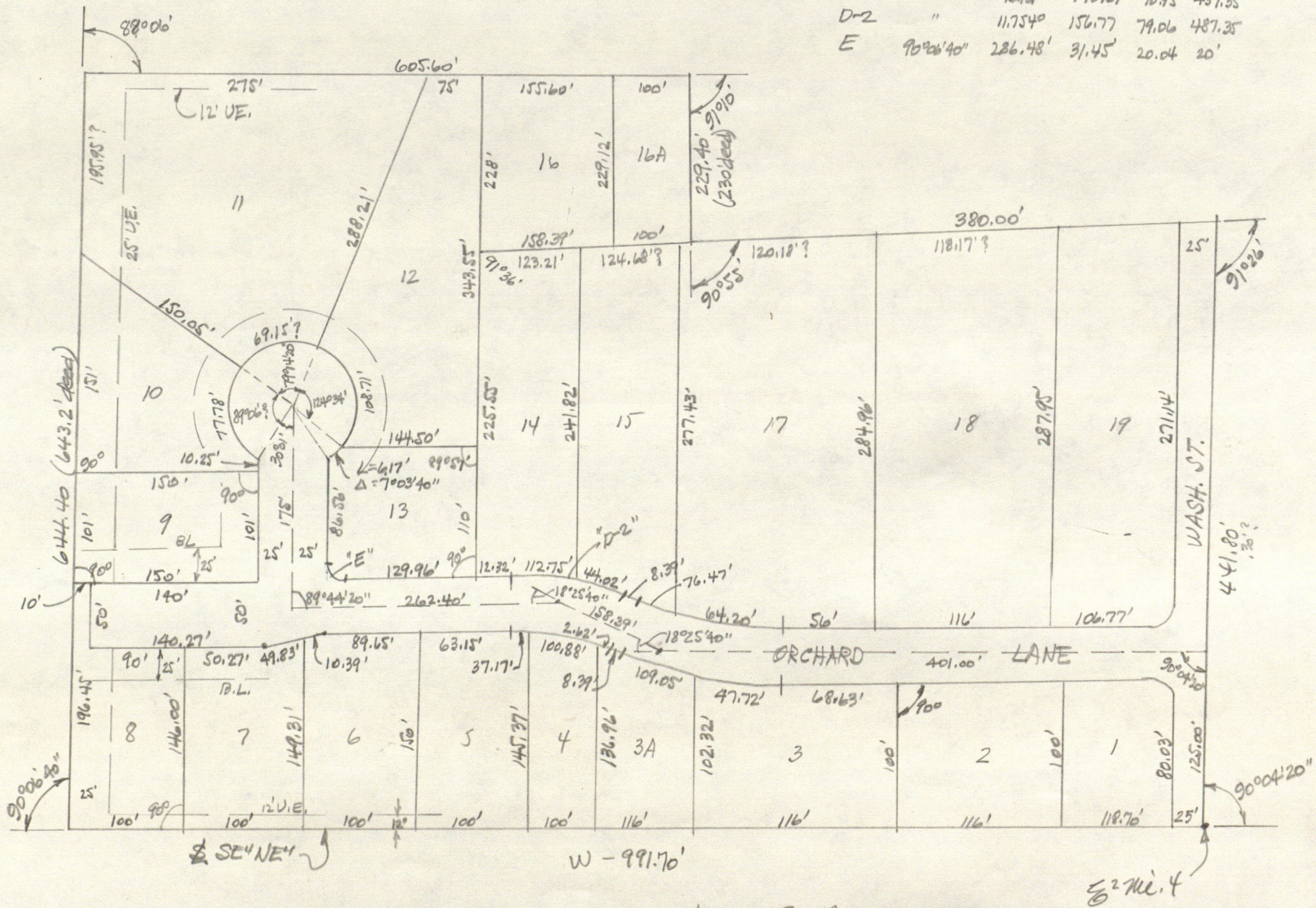


N<sup>2</sup> 4-15-1W WEAN-ANDREWS

1443

# SHELTON TERRACE

	$\Delta$	D	L	T	R	C
D-1	18°25'40"	131.0'	140.67	70.95	437.35	
D-2	"	117.54'	156.77	79.06	487.35	
E	90°26'40"	286.48'	31.45'	20.04	20'	



Henry L. Post  
19 July 1960

256/613 Alan W. Marnitz to Glen R. Stockment et al,  
1/4 int. in W 50 ac. S<sup>2</sup> NE<sup>4</sup> 4-15-1W

also W 50' lots 6, 11, & 17 N. Danville

Also all his right title & int. in a certain option to  
purchase an additional 5 ac. ±, from Leota P. Huddleston  
dated Jan. 20, 1975.