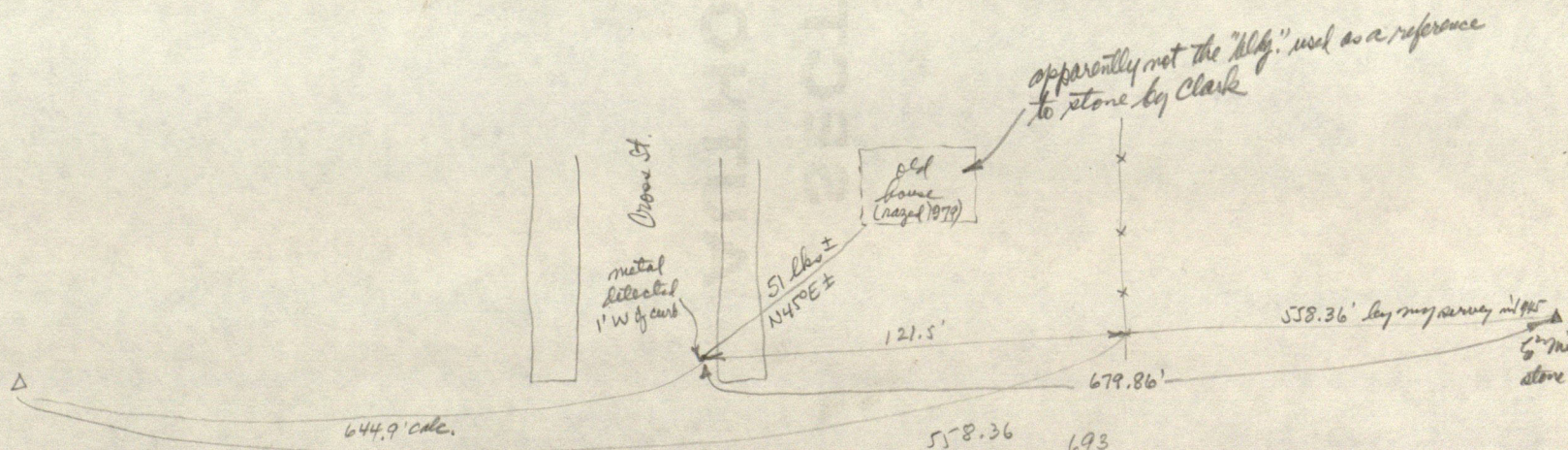
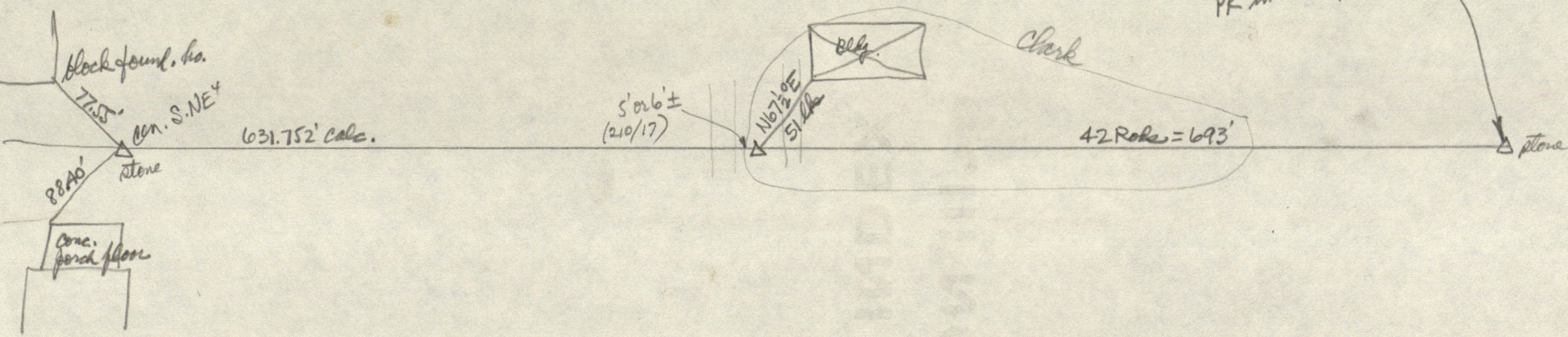


E<sup>2</sup>NE<sup>4</sup> 9-15-1W

1468

6<sup>2</sup> mi. 9-15-1W  
 cen. of fire hydr. S66°23'W 56.2' (55.94')  
 p. pole N5°W 2.2'  
 PK in wood pole N80°E 83.60'

1324.752' (S.M.S. 1944)

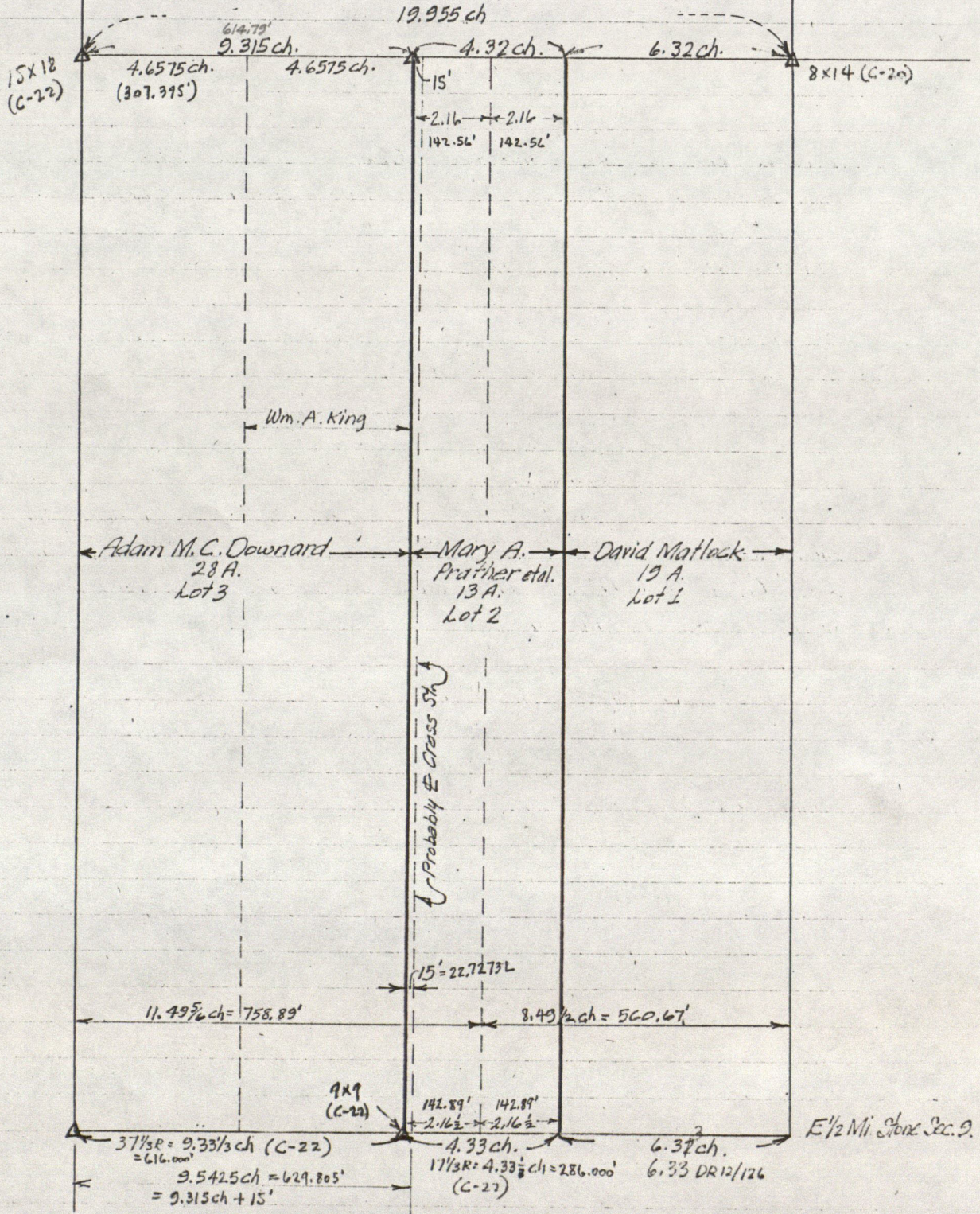


644.9' calc.  
 766.4' 200/40

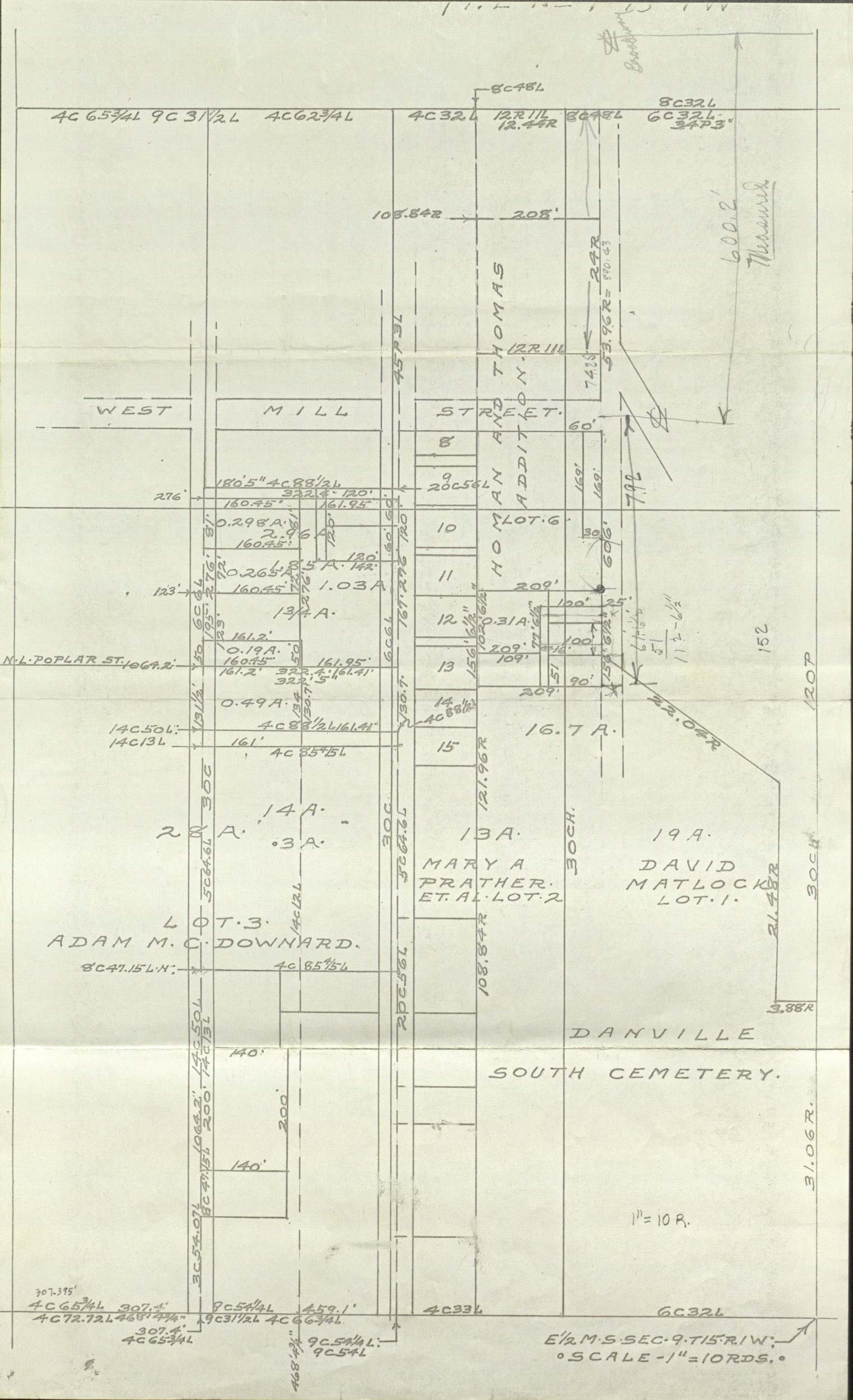
766.4	558.36	693
121.5	121.5	679.86
644.9	679.86	13.14
13.14		
631.76		
15		
616.76		

# ORIGINAL

TOWN



$$\begin{array}{r}
 9.33 \frac{1}{3} \\
 4.33 \\
 6.33 \\
 \hline
 19.99 \frac{1}{3} = 1319.56'
 \end{array}$$



4C 65 3/4 L 9C 3 1/2 L 4C 62 3/4 L 4C 32 L 12 R 11 L 12.44 R 8C 48 L 8C 32 L 6C 32 L 34 P 3

108.84 R 208'

600.2' Measured

WEST

MILL

STREET

HOMAN AND THOMAS ADDITION

180.5" 4C 88 1/2 L 322.2' 120' 160.45' 161.95'

0.298 A. 2.96 A. 160.45' 120' 180' 180' 142'

123' 120.265 A. 8.5 A. 1.03 A. 13 1/4 A. 161.2' 161.95' 161.2' 322.4' 161.41' 322' 5"

M.L. POPLAR ST. 106.2' 14C 50 L 14C 13 L 0.49 A. 4C 88 1/2 L 161.41' 161' 4C 85 1/2 L

28 A. 14 A. 3 A. ADAM M.C. DOWNARD. 8C 47.15 L N. 4C 85 1/2 L

15' 16.7 A. MARY A PRATHER ET AL LOT 2. 121.96 R 108.84 R 120' 109' 209' 77' 6 1/2" 156' 6 1/2" 102' 6 1/2" 100' 25' 100' 151' 6 1/2" 151' 6 1/2" 51' 90' 22.04 R 30 CH. 31.48 R 3.38 R

19 A. DAVID MATLOCK LOT 1. 30 CH. 30 CH. 120 P

DANVILLE SOUTH CEMETERY. 140' 200' 140' 31.06 R.

1" = 10 R.

307.395' 4C 65 3/4 L 307.4' 9C 54 1/4 L 459.1' 4C 72.72 L 468' 7 1/4" 9C 31 1/2 L 4C 66 3/4 L 307.4' 4C 65 3/4 L 468' 7 1/4" 9C 54 1/4 L 9C 54 L

E 1/2 M.S. SEC. 9. T. 15. R. 1 W. SCALE - 1" = 10 RDS.