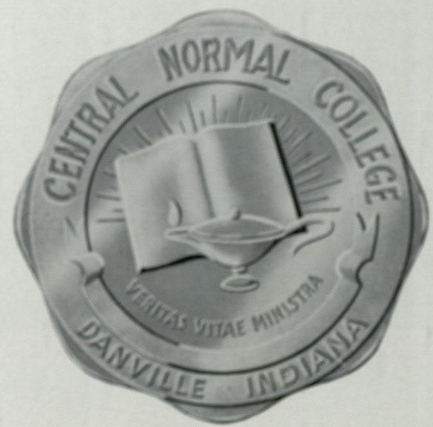


CENTRALIAN

1939

See Auction 7.15.01 1100





And we really feel that bad after having worked through this Centralian.
 Chalmer Dunn, Editor James Strode, Advertising.

Editor.....Chalmer Dunn
 Assistant Editor.....Marguerite Fraser
 Business Manager.....Paul Jones
 Advertising Manager.....Virginia Huxford
 Advertising Staff.....James Strode
 Eugenia Johnson
 Alma Zarse
 Psi Chi Omega.....Louise Starkey
 Alpha Theta Epsilon.....Lethia Wilson
 Delta Sigma Kappa.....Catherine Eldridge
 Alpha Mu Kappa.....James Strode
 Zeta Sigma.....Paul Parker
 Sigma Lambda Pi.....Floyd Crum
 Sigma Phi Kappa Delta.....Blanche Wean

CENTRALIAN STAFF

CONTENTS

| | |
|-------------------------------------|------------------------|
| Staff | 6 |
| Foreword | 8 |
| Dedication | 10-11 |
| Board of Trustees | 12 |
| President Griffey | 13 |
| Faculty | 14-16 |
| Senior Class | 18-26 |
| Sigma Phi Kappa Delta | 28-29 |
| May Queen | 30 |
| Two Year Elementary | 31-34 |
| Junior Class | 35-36 |
| Sophomore Class | 37-38 |
| Freshman Class | 39-41 |
| Reveries | 42-43 |
| Commerce | 44-45-50 |
| Campus Crier | 46-47 |
| Kappa Pi Beta | 48-49 |
| Music | 52-55 |
| English Club | 57 |
| Caltragonian Circle | 58 |
| Draceno Club | 59 |
| Art Club | 60 |
| Phy-chem Club | 61 |
| W. A. A. | 62 |
| Student Christian Association | 63 |
| N. Y. A. | 64 |
| Booster Club | 65 |
| Athletics | 67-77 |
| Sororities | 78-85 |
| Fraternities | 87-93 |
| Snap | 9-27-51-56-66-86-94-95 |
| Advertisement | 96-109 |
| Conclusion | 110 |
| Acknowledgments | 112 |

FOREWORD

OUR college life has left many pleasant memories of activities, studies and social functions. This Centralian has been published as a means of recording and preserving those memories so that our hearts will ever remain alive to our alma mater, CNC.



DEDICATION

NO more sincere tribute could be paid than the one the Central Normal Students are attempting to express in this annual to their true friends, Miss Marie Foulds, Max Hanners, and Edna Mae Caudell.

We knew Miss Foulds not only as a teacher of art but also as an enthusiastic lover of youth, ever willing to enter whole-heartedly into our activities.

The tragedies of both Edna Mae and Max touched the student body with grief.

Edna Mae was known as a hard-working, earnest student whose great love for children had inspired her to become a primary teacher.

Max's sense of humor and ability to meet difficulties bravely inspired us all to more worthy effort.

In a spirit of appreciation of their lives, we dedicate this book.



MARIE FOULDS

MAX HANNERS

EDNA MAE CAUDELL

BOARD OF TRUSTEES



OTIS E. GULLEY
DR. W. T. LAWSON
ALLEN J. WILSON
DR. C. H. GRIFFEY

C. W. GASTON
FRANK ROBERTS
ROBERT H. KING
JOHN C. TAYLOR

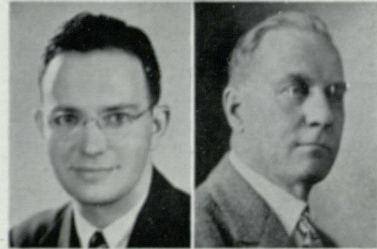
Dr. Carl H. Griffey
President



FACULTY



Mary Barton Johnson, A. B.
Instructor of Commerce



C. Wayne Shumaker, A. B., A. M.
Head of English Department

F. H. Cotton, Ph. D.
Instructor in Education



Daisy M. Jones, A. B., A. M.
Assistant Professor of Education

Nellie Storn M. Beagley, A. B.
Instructor in Elementary Education



W. E. Johnson, A. B., A. M.
Head of Language Department

Pleasant R. Hightower, A. B., A. M., Ph. D.
Head of Department of Education



Margret E. Whitney, A. M.
Instructor of Science

Mary Keller Ade, M. D.
College Physician



James B. Wilson, A. B.
Head of Art Department

Sewell Leitzman, B. S., M. S.
Head of Department of Phys. Ed.

FACULTY

Norris S. Porter, B. Mus.
*Assistant Professor of Music
and Physical Education*

Marjorie Dean Gaston, A. B., M. Mus.
Head of Department of Music

J. I. Skidmore, A. B.
*Director of Band and Orchestra
Instructor of Music*

N. E. Winfrey, A. B., A. M.
*Head of Department of History and
Social Science*

Blanche McNeely Wean, B. S., M. A.
Head of Business Education Dept.

C. R. Maxam, A. B.
*Head of Placement and Instructor
of Education*

Fred E. Hadley
Supt. of Buildings

Nancy Baird
Bookstore Attendant

Lorene Orr, A. B.
*Librarian and Instructor
of Library Science*

Audra Roberts, A. B.
Secretary to the President





Virgil Hunt, B. S., M. A.
*Dean of Education
 Head of Science Department*

Edward Eikman, B. S.
*Registrar
 Secretary-Treasurer*

Bertha Watts, A. B.
*Dean of Women
 Professor of English*

Robert L. Green, A. B., M. A.
*Dean of Men
 Head of Mathematics Department*

THE BELLS OF CNC



*I hear the bells of CNC
 They bring to me, sweet memories
 Sweet memories of yesterday,
 When we were classmates true,
 School gave me some friendships true,
 The best I ever knew;
 I wonder if you hear the bells, old pal,
 The bells of CNC.*

SENIORS

WE, the seniors of 1939, who are now approaching the time when we will no longer be students of Central Normal College but alumni, wish to recall the happy days we have spent in CNC, the Grand Old School which we all love.

As we look back we see that we have developed from a group of bashful freshmen into teachers. During these four long years which have seemed so short, we have met with many situations and problems which either will aid us or hinder us in our chance to succeed. All of us have appreciated the friendships we have made with faculty and students alike. Our love for Central Normal College is strong.

It is with a feeling of sincere loyalty that we, the Senior Class of 1939, say "So long" to our friends until we can get back for a visit.



President

Charles Pope, B.S.

Danville, Commerce, Physical Ed., Social Studies, Alpha Mu Kappa president, 4, Kappa Pi Beta, Booster Club, Senior play, Crier staff, president Junior class.

Vice-President

Kenneth Andrews, B.S.

Lafayette, Commerce, Physical Ed., Social Studies, Kappa Pi Beta president 3, Letterman's Club, Football, Zeta Sigma treasurer.

Dean Virgil Hunt, Sponsor

Secretary

Mildred Carter, A.B.

Danville, Latin, Commerce, English, Biology, Psi Chi Omega secretary 4, Kappa Pi Beta, Sigma Phi Kappa Delta, Who's Who.

Treasurer

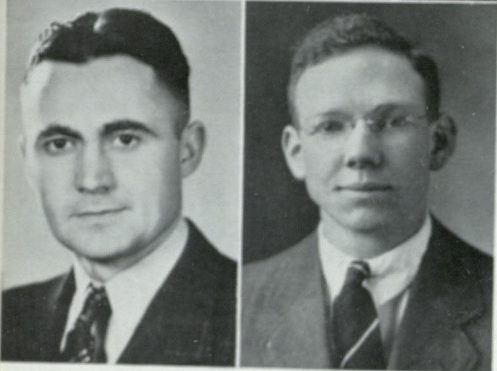
Paul Jones, B.S.

Lewisville, Commerce, Physical Ed., Physical Science, Sigma Lambda Pi treasurer 2, vice-president 4, Kappa Pi Beta president 4, Editor Crier 4, Sigma Phi Kappa Delta, Football, Baseball, Basketball, Band, Student Accountant 2, Who's Who.



CHRISTINA ALLISON, B.S.
Greens Fork. Four Year Primary. Psi Chi
Omega, Art Club Pres. 3, Vice-pres. 4, Band
1, 2, 3, Secretary-Treasurer Junior class.

IRA G. BARKER, B.S.
Plainfield. Social Studies, Biological Science.
Alpha Mu Kappa.



CHARLES BELL, B.S.
Depauw. Commerce, Biological Science. Alpha
Mu Kappa, Sigma Phi Kappa Delta, Science
Club, Commercial Club.

EUGENE BOOTHROYD, B.S.
Otterbein. Commerce, Music, Biology.

ESTOL EADS, B.S.
Versailles. Social Studies, Op. I, Commerce.
Alpha Mu Kappa.

CATHERINE ELDRIDGE, B.S.
Greenwood. Four Year Primary. Delta Sigma
Kappa, Kappa Pi Beta, English Club, Art Club.
President Delta Sigma Kappa 4.

GRACE ENLOW, B.S.
Ossian. English, Commerce, Physical Ed. Alpha
Theta Epsilon, Drasceno, Women's Athletic
Association, Campus Crier Staff. Treasurer
Alpha Theta Epsilon 1, Secretary Alpha Theta
Epsilon 3.

ARLINE FEINBERG, B.S.
Richmond. Music, English. Alpha Theta Epsi-
lon, English Club, Band, Orchestra, Girls' Sex-
tet, Kappa Pi Beta, Sigma Phi Kappa Delta,
Crier Staff, Y. W. C. A., President Glee Club.



ERNEST BROWN, B.S.
Bloomingdale. English, Music.

DORIS BROYLES, B.S.
Pittsboro. Commerce, Physical Ed. Psi Chi
Omega, Kappa Pi Beta, W. A. A., Campus
Crier, Band, Senior Play, Sigma Phi Kappa
Delta.

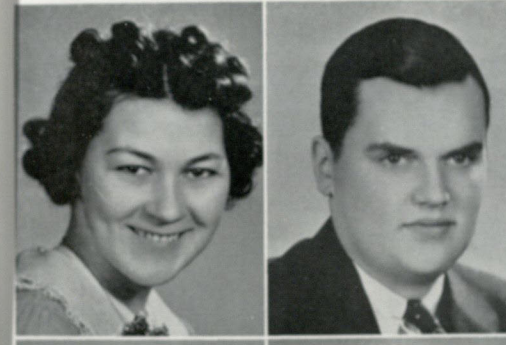
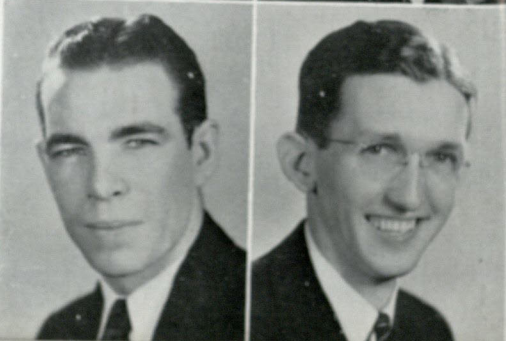
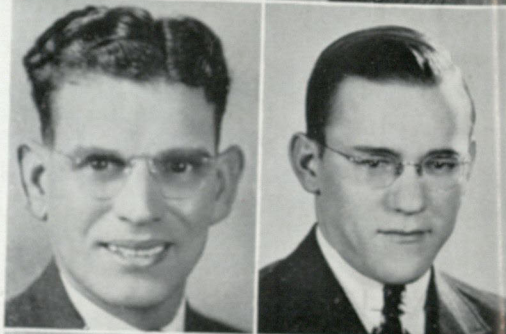
CHARLES BRUNSON, B.S.
Castleton. History, English. Senior Play.

CARL BUTT, B.S.
Sunman. Commerce, Music, English. Kappa Pi
Beta, Campus Crier Staff.

KEITH DAVIS, B.S.
Shipshewana. Science, History, Physical Ed.
Sigma Lambda Pi, Lettermans Club, Science
Club. Football, Baseball, Track, Glee Club.
Vice-president Freshman Class.

CHALMER F. DUNN, B.S.
Pittsboro. Commerce, Math., Biological
Science, Physics. Student Accountant, Alpha
Mu Kappa, Kappa Pi Beta, Sigma Phi Kappa
Delta, Science Club, Math. Club, Senior Play,
Editor Centralian, Art Editor Crier, Who's
Who.

Twenty



DOROTHA FORD, B.S.
Warren, Ohio. Commerce, Mathematics, Physi-
cal Ed. Sigma Phi Kappa Delta, Kappa Pi
Beta, Drasceno, Math Club, Business Manager
Crier, Who's Who Among College Students,
N. Y. A. Plays, Drasceno Play, Treasurer Dras-
ceno, President of W. A. A. 2.

R. STANLEY GARMAN, B.S.
Grabill. Physical Ed., Biological Science, So-
cial Studies, Mathematics. Alpha Mu Kappa.
Sigma Phi Kappa Delta, Vice-President of
Junior Class, President Math Club 4.

JUNE GRIFFEY, A.B.
Danville. Commerce, Latin, English, Physical
Ed. Senior Play, Orchestra.

ELIZABETH HADLEY, B.S.
Danville. Primary Education, Art. Psi Chi
Omega, Sigma Phi Kappa Delta, Kappa Pi
Beta, Glee Club, Crier.

ELMER G. HAMMOND, B.S.
Greencastle. Commerce, Physical Ed., History.
Basketball.

ELMER HELLER, B.S.
Moores Hill. English, Commerce, Band.

Twenty-one

ROBERT HEDRICK, B.S.

Lewisville. Commerce, Physical Ed., Social Studies. Sigma Lambda Pi, Kappa Pi Beta, Lettermen's Club. Football, Baseball.

MELBA HUBER, B.S.

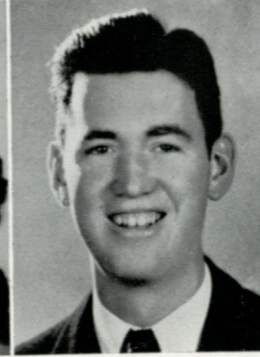
Quincy. Commerce, English, History. Kappa Pi Beta, Sigma Phi Kappa Delta, W. A. A. Secretary English Club 4, National organizer of K. P. B. 4, Campus Crier Staff.

ELZA A. HUDSON, B.S.

Owensburg. Social Studies, Biological Science, Physical Ed. Sigma Lambda Pi.

VIRGINIA HUXFORD, A.B.

Rosedale. Commerce, Latin, English, Physical Ed. Sigma Phi Kappa Delta. Advertising Manager of Centralian, Dramatics, Secretary Kappa Pi Beta, Secretary and Rush Captain Alpha Theta Epsilon, Social Chairman English Club.



NORMAN JARBOE, B.S.

Tell City. Mathematics, Physics, Biology. Alpha Mu Kappa.

EUGENIA JOHNSON, A.B.

Owensville. Latin, Commerce, Social Studies.

ROSEMARY JONES

KENDALL KELLER

LOUISE KNAUER, B.S.

Greencastle. Four-year Primary. Alpha Theta Epsilon, Glee Club. President of Art Club.

ZELMA KUTCH, B.S.

Odon. Biology, Commerce, English. Alpha Theta Epsilon, Commercial Club, Glee Club, Art Club, Y. W. C. A.

HAROLD LONG, B.S.

Danville. Music, History, English. Alpha Mu Kappa, Sigma Phi Kappa Delta. Drasceno Play, S. C. A. Cabinet 2, Cornet Trio, Band, Orchestra, Who's Who In American Colleges and Universities.

CELENA MAE MATHEWS, A.B.

New Amsterdam. English, Latin, Physical Ed. W. A. A.

HOPE MCBRIDE, B.S.

Sellersburg. Commerce, Social Studies, English. Booster Club, Campus Crier, Band, Sigma Phi Kappa Delta. Secretary Psi Chi Omega 3, Vice-President Psi Chi Omega 4, Treasurer Kappa Pi Beta 4, Program Chairman English Club 3, Membership Chairman English Club 4.

CARVEL MCGARVEY, B.S.

Jeffersonville. Physical Ed., Social Studies, Commerce. Sigma Lambda Pi, Lettermen's Club, Booster, Students Union, President Sigma Lambda Pi 4, Captain Freshman Basketball team 2, Captain Varsity Basketball team 4.

JAMES MAHAN, B.S.

Rochester, New York. Physical Ed., Social Studies, Physical Science. Zeta Sigma.

ALICE MARKLAND, B.S.

Plainfield. English, Physical Ed. Delta Sigma Kappa, Sigma Phi Kappa Delta.

BERTHA MARTING, B.S.

Bloomington. Physical Ed., Commerce. Alpha Theta Epsilon, Science Club, English Club, Glee Club, Kappa Pi Beta. Drasceno play.

MARY MEEKS, B.S.

Danville. Music, Commerce. Sigma Phi Kappa Delta, Psi Chi Omega, Drasceno, Glee Club. A. W. S., Y. W. C. A.

MERRILL MILLER, B.S.

Linton. Physical Ed., Commerce, Biology. Zeta Sigma.

JAMES MONTGOMERY, B.S.

Danville. Physical Ed., Commerce, History Op. I. Zeta Sigma.





VIRGINIA FRANCES MOORE, B.S.
Bedford. English, Commerce, Physical Ed.
Delta Sigma Kappa, W. A. A., Art Club treasurer 4.

WELDON C. MORGAN, B.S.
Otterbein. Music, Commerce, Math. Kappa Pi Beta, Treasurer 3 and Vice-President Alpha Mu Kappa 4, President Band 3. Math Club, Glee Club, Orchestra, Cornet Trio.



RUSSELL M. NALE, B.S.
Perrysville. Mathematics, Physical Ed., Physical Science. Alpha Mu Kappa, Sigma Phi Kappa Delta, Math Club. Senior Play, Vice-President Science Club 3, 4.

MARTHA CROSE OWENS, B.S.
Brownsburg. Commerce, English, Physical Ed. Psi Chi Omega.

HUBERT W. SCOTT, B.S.
Martinsville. Physical Ed., Commerce, Biological Science, Zeta Sigma President 3, Sophomore Class President, Lettermen's Club, Campus Crier, Basketball, Football.

LOUISE STARKEY, B.S.
New Augusta. Music, Physical Ed., Commerce, Art. Psi Chi Omega President 4, Glee Club, Sextet, Y. W. C. A. President 3.



WALTER STIERS, B.S.
Indianapolis. Physical Education, Commerce, Social Studies.

JAMES STRODE, B.S.
Trafalgar. History, Physical Ed., Biology, English. Vice-President Alpha Mu Kappa 3, Historian 4, Senior Class Play, Advertising staff, Centralian.



PAUL E. PATTERSON, A.B.
St. Paul. Commerce, Latin, Physical Ed., Social Studies. Alpha Mu Kappa, Kappa Pi Beta, Commerce Club, Campus Crier Staff.

WILCIE REA, B.S.
Holton. Commerce, Social Studies. Kappa Pi Beta, Sigma Phi Kappa Delta, Y. M. C. A.

WILBUR RICHARDS, B.S.
New Salisbury. Commerce, Mathematics, Physical Ed. Zeta Sigma, Math Club.

THEO RUSH, B.S.
Solsberry. Physical Ed. Alpha Mu Kappa.

CLYDE SALLEE, B.S.
Pittsboro. Social Studies, Biological Science. Glee Club, Quartet.

IRL SCHUYLER, B.S.
Stewardson, Ill. Social Studies, Biology, Physical Ed.



WILMA SUTHERLIN, A.B.
Roachdale. Latin, Physical Ed., Mathematics, Biology. W. A. A., Treasurer Math Club 4.

RUTH THOMAS, A.B.
Danville. Latin, Physical Ed., Commerce, Biological Science. Sigma Phi Kappa Delta. Vice-President 2, 4, President 3 of Student Christian Association. Band, Orchestra, Sextet.

WILFORD TRIBBY, B.S.
Solsberry. History, Commerce, Physical Ed., Sigma Lambda Pi.

HAROLD WALLACE, B.S.
Lafayette. Physical Ed., Social Studies, Commerce. Zeta Sigma, Lettermen's Club, Football, Basketball, Baseball, Track, Captain Football 4.

KENNETH W. WARTHEN, B.S.
Paragon. Commerce, Biological Science, Physical Ed. Sigma Lambda Pi, Kappa Pi Beta. Senior Play, Campus Crier.

RULLUS WILLIAMS, B.S.
Kewanee, Illinois. Commerce, Physical Ed. Alpha Mu Kappa, Kappa Pi Beta. Campus Crier.



THELMA WILLIAMSON, A.B.

New Albany. Commerce, Latin, English. President 3 Secretary 2 Treasurer 4 of English Club, Kappa Pi Beta Vice-President 4. Sigma Phi Kappa Delta, Senior Play, Crier Staff, Who's Who, N.D.P.A. file clerk.

LETHIA WILSON, A.B.

Roachdale. Commerce, Latin, Physical Ed., English. President Alpha Theta Epsilon 4, President W. A. A. 3, Booster Club, Senior Play, Drasceno.



THOMAS E. WILSON, B.S.

Otterbein. Music, Commerce, Social Studies. Alpha Mu Kappa, Band, Orchestra, Cornet Trio, Glee Club.

ALMA L. ZARSE, A.B.

Chalmers. Latin, English, Mathematics. Alpha Theta Epsilon, Kappa Pi Beta, Sigma Phi Kappa Delta, Drasceno, Math Club, English Club. Campus Crier, Advertising Staff of Centralian, Drasceno Play, Senior Play, Y. W. C. A. Cabinet.

HARRY O'BEAR

VONDA PETRO, B.S.

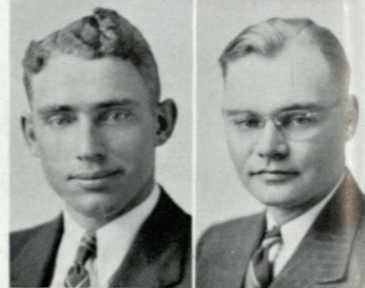
Trafalgar. Social Studies, Physical Ed.

CHARLES BUSH, B.S.

Ramsey. Biology, Physics, Mathematics. Science Club.

DAVID H. SHIPLEY, B.S.

Crothersville. Science, Mathematics. President Alpha Mu Kappa '38, Treasurer Alpha Mu Kappa '34. Science Club, Band.



SIGMA PHI KAPPA DELTA

Honorary Scholastic Fraternity

SIGMA PHI KAPPA DELTA was founded at Central Normal College during the summer of 1932 with 15 charter members: Dr. Waldo Wood, Carl E. Wilson, Fred Lemley, L. N. Blue, C. R. Landis, Geoffrey Carmichael, C. R. Maxam, Claude Lawler, A. A. McClannahan, Harry Hays, Leslie I. Steinbach, Blanche M. Wean and Dr. George H. Reibold.

The purpose of this organization was to recognize outstanding scholarship, capacity for research, ability in leadership and willingness to serve.

During the life of this organization 265 persons have been honored by becoming members. Honorary members who have been initiated are: O. E. Gulley, John C. Taylor, Glen Hovermale, Curtis W. Roll, Connor D. Ross, Grover Van Duyn, Sylvan A. Yager, John W. Laird, J. Malcolm Dunn, H. M. Whisler, Floyd I. McMurray, Birch E. Bayh, Charles S. Foster, W. T. Lawson, Gerald Alexander, Dr. E. M. Dill, John W. Cravens, F. R. Henshaw, Etta C. Hogate, Roy E. Jones, Mrs. C. H. Griffey, Dr. F. A. Cotton, Mrs. Kate Huron Gilbert, Honorable Elmer Thomas, Mrs. Jennie Ralston, Mrs. Nell Millikan Stevens, Mr. W. S. Sanford.

Class of January 1939: Robert Lloyd Green, Mary Barton Johnson, Norris S. Porter, Margaret Esther Whitney, Mildred Carter, Dorothea Ford, Chalmer F. Dunn, Ruth Elaine Thomas, Glendora Charles Kirk, R. Stanley Garman, Melba Eloise Huber, Virginia Huxford, Paul H. Jones, Hope McBride, Mary R. Meeks, Harry H. O'Bear, Thelma L. Williamson, Alma L. Zarse, Harold R. Long, June Griffey, Eugenia Johnson.

Class of June 1939: Betty Hadley, Russell Nale, Ernest Brown, Celena Mathews, Arline Feinberg, Charles Bell, Doris Broyles, Lethia Wilson, Wilcie Rea, Jesse Whitcomb, and Louise Knauer.

Officers of year: President, Marjorie Dean Gaston; Vice-president, Edward Eikman; Secretary-Treasurer, Blanche M. Wean.

SIGMA PHI KAPPA DELTA

Charles Bell
Ernest Brown
Doris Broyles
Mildred Carter
Chalmer F. Dunn



Arline Feinberg
Dorothea Ford
Stanley Garman
June Griffey
Betty Hadley



Melba Huber
Virginia Huxford
Eugenia Johnson
Paul Jones
Louise Knauer



Harold Long
Mrs. Alice Markland
Celena Mathews
Hope McBride
Mary Meeks



Russell Nale
Harry O'Bear
Martha Owens
Wilcie Rea
Audra Roberts



Ruth Thomas
Thelma Williamson
Lethia Wilson
Alma L. Zarse



Nellie Storn Beagley
Edward Eikman
Marjorie Gaston
R. L. Green
Dr. Carl H. Griffey



Mrs. Carl H. Griffey
Virgil Hunt
Mary Barton Johnson
Daisy Marvel Jones
C. R. Maxam



Norris B. Porter
Wayne Shumaker
Blanche M. Wean
Margaret E. Whitney
N. E. Winfrey



MAY QUEEN



Louise Starkey was elected by the students to rule as Queen over the May Day Festivities.

The activities began the afternoon of May 1 in the park and were climaxed by the dance in the Grid Room that evening.

Miss Starkey was accompanied by her maid of honor, Mildred Carter; attendants, Lena Nicholson, Edith Roberts, Evelyn Jones, Jean Mahan, Norma Everhardt, and Nellie Mullinix.

The dancers seen in the picture are Viola Williamson, June Griffey, Mary Frances Street, Ruth Wade, Peggy McCoun, Thelma Hoppes, Dorothy Thomas, and Eunice Meeks.

Mary Lou Parr was flower girl and Byron Anderson was crown bearer.

TWO YEAR ELEMENTARY

AFTER two years of hard work we are ready to go out into the world and take our place as elementary teachers.

Our success as teachers will be partly due to our own initiative and partly due to our training in CNC. Our success in the community will be Central Normal's success in that community.

So we now go to our jobs, determined to make the most of our opportunity for the sake of our Alma Mater as well as our own.



Goldiene Akers
Mary Alexander
Mary Jane Beaman



Sam Blue
Ganelle Bymaster
Helen Chance



Anne Christie
Lee Cunningham
Mary Frances Curry

Glendon Moon
Clara E. Morse
Nellie Mullinix



Edward Neimeyer
Lena Nicholson
Norma Nicholson



Dorotha Orem
Mae Percifield
June Pruett



Norma J. Everhardt
Beryl Fortner
Kenneth E. Funk



Edith Roberts
Ellia L. Reisert
Mrs. Mae Sharp

Catherine Goodmiller
Thelma Hoppes
Freda Hurst



Mildred Spark
Junius Stewart
LaDonna Swain

Evelyn Jones
Meldra E. Markland
Jean Mahan



Alberta Thomas
Maurice Thompson
Morris Wade

Joan Mays
Glen A. McIntosh
Edna Mae Mitchell

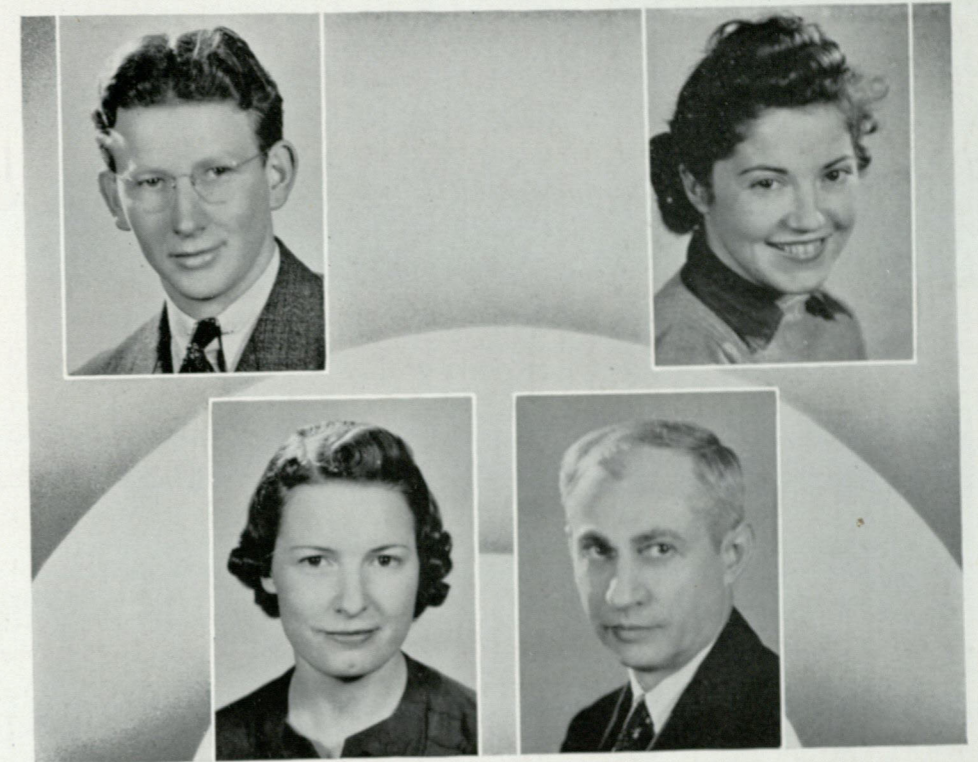


Phyllis White
Marguerite Whiteman
Arline Wolfe

IN the fall of 1937 a group of students entered Central Normal College to prepare to become teachers in the Elementary and Primary schools. During the past two years, they have grown from green freshmen to mature teachers.

We bid adieu to the students of the two-year Elementary course. This is the last class which will receive the two-year certificate. May we wish that these teachers will be successful in their life work and that they will return to the campus frequently.

JUNIORS



Charles Newton
President

Ruth Wade
Vice-President

Marguerite Harrison
Secretary-Treasurer

Prof. Johnson
Sponsor



Eunice Beard
Jeannette Bell
Grace Ineva Clark



Mary Geneva Clark
Lowell Coats
James Cox



Floyd Crum
Marian Edmonson
Maxine Edmonson

Richard Falls



Lola Farrell

Ernest Ferguson
Marguerite Fraser



Ellene Glossop

Joan Griffey
Iona Hershberger



Fern Hiday

Peggy McCoun
Ernest Mauck

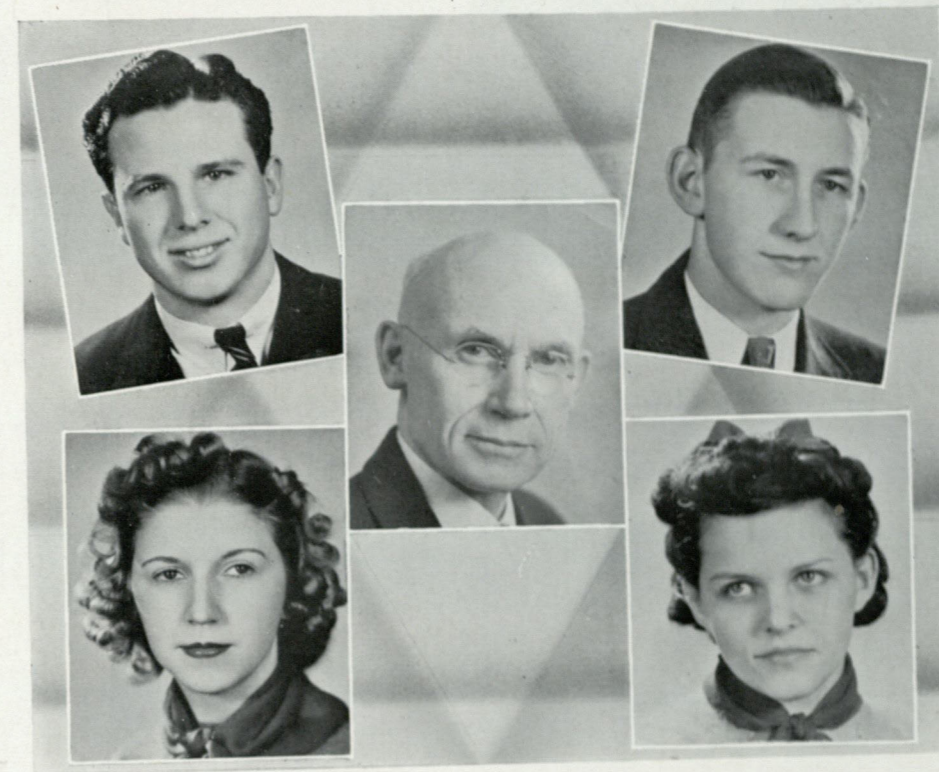


Eunice Meeks

Austin Myers
Valentine Pleasant



SOPHOMORES



VERNON BOSWELL
President

GERALD DOEDON
Vice-President

PROF. WINFREY
Sponsor

EDITH ROBERTS
Secretary

MARY LOU SMITH
Treasurer



Alvin Beumer
 Doris Bottorff
 Mary W. Calloway
 Ava Cunningham

Ruth Carolyn Dawson
 Paul Durack
 Samuel M. Eggers
 Morris Etter

Raymond Hall
 Thomas Janeway
 Virginia Belle Keeney
 Noble Littell

Charlotte Lynn
 Maurice McHaffie
 Shirley McMullin

Margaret Martin
 Mary E. Myers
 Noel Peters
 Hazel Routier

Jack Shaw
 Ruth Terry
 Maxine Tharp
 Dorothy Thomas

June Westbay
 Lawrence Wheatley
 Idaperl Williams
 Kathleen Williams



FRESHMEN



LOUIS AIKMAN
President

HARRY CLARK
Vice-President

BETTY LOU COOPER
Secretary-Treasurer

DEAN GREEN
Sponsor



Shirrell Alexander



Dorothy Amick
Alice Amy
Charlotte Anderson



Max E. Bell
Bertha Ellen Christie
Betty E. Cox



Donna Cox
Earl Crisler
Leon Dalton

Charles Kitley



Helen Klipsch
Russell Laymon
Irene Luster



Madge McClanahan
Lawrence Mahler
Harvey Meeks



William Metsker
Harriett Nell Milling
Inez Monninger



Paul Deich
Kenneth Dickerson
Robert Downey
Eudora Ellis



Betty Firestone
Joan Fulton
Robert Graham
Kenneth Griggs



Chez Haehl
Mildred Hamilton
Wendell Hanna
Gervase Hess



Florence Higgins
Mary Alice Huston
Walter Jackson
Ruby Kearns

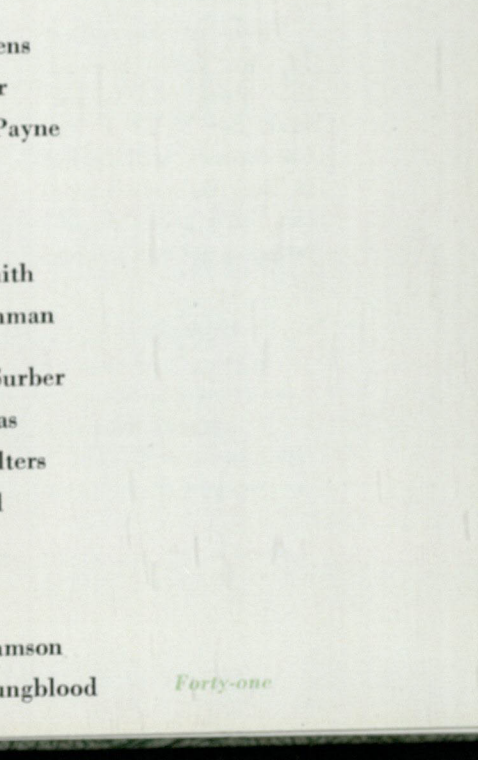


Elwood Mounts
Virginia P. Owens
Helen Parker
Meredith Payne

Mary Pierpont
Donald Rogers
Helen M. Smith
Mary Stienman

Mary Margaret Surber
Warren Thomas
Roberta Walters
Lois Ward

Gene E. Weber
Bruce West
Viola Williamson
Peter Youngblood



REVERIES OF 1938-39

WELL, summer is over and we are again ready to come back to C. N. C. Registration is set for September 12 but some of us feel that we need a little longer vacation and do not come back until a few days later.

Say, look at all the Freshmen! Everyplace we look we see two new faces and so to get acquainted with these so-called green freshies, we go to the Freshman Mixer, September 13 and find that some of them are quite easy to look at.

We forge ahead, still trying to make an impression with the teachers, attending the mixers, going on hay rides, to football games, club and fraternity meetings, and having a good time in general until on October 29 there comes the big day—Homecoming. Now we old students get to see our old friends and the new students meet the grads. Although Manchester gives us a sound trimming in the football game, our spirits are still high and we all go to the dance and behold—no orchestra. We do get to dance to a nickelodeon and this makes us feel all right for we get to dance with our old friends and talk about the good old days.

Now comes "Friends from Home Day", November 6, and we meet the mothers and fathers of our friends, the grand old people who help send us to this institution.

Then on November 11, we stick around that week end to see what the N. D. P. A. Conference will bring to Danville and what we can learn about duplicating a school paper.



Seniors elected to Who's Who in America



Sigma Phi Kappa Delta Banquet
Zeta Sigs after Chapel program

Scene from Drasceno Play
Award winners at Razz Banquet

Vacation again—we go home on November 24 for our Thanksgiving vacation and come back to school and find that six seniors—Dorothy Ford, Thelma Williamson, Mildred Carter, Harold Long, Paul Jones, and Chalmer Dunn—had been elected to membership in Who's Who in America among college and university students.

December 22 finds us planning to go to the Panhellenic Dance and then home for Christmas. The New Year brings us a lot of resolutions and back to school.

January 10 and we see girls everywhere—oh, the Zeta Sigs give a chapel program and are they dressed for the occasion! Boy, are Kennedy and Manning cute in their makeup!

Sigma Phi Kappa Delta banquet January 30 and Psi Chi chapel program January 31. That all-girl orchestra looked good to us, but maybe we kind of go for that.

Basketball homecoming and look at the old grads who came back. The Earham boys don't look so good after the Warriors really got on the warpath. After the game, a dance is held in the Grid Room, and the orchestra is really here this time.

"The Night of January 16" and on February 8. Who did murder Faulker? All we know is that the jury is crooked.

Barkers, sideshows, freaks, and everything at the "Y" Carnival held in the Grid Room on February 23.

The W. A. A. gives a very good chapel program on March 28, and April 1 we can hardly get around for the high school students who come to Danville to participate in the annual Commercial Contest. This really gives us a workout, but we are still able to go to the amateur contest and dance which follows.

A queen?—May queen, of course, but no Robin Hood!—Jones has a baseball game! Louise Starkey and her attendants certainly provide a colorful court for the May Day festivities which are held in the park.

Well, now all we got to do is worry about our classes, try to get rid of spring fever and wait for Commencement.

COMMERCE



BLANCHE M. WEAN
Head of Department

MARY B. JOHNSON
Instructor

THE commerce department of Central Normal College has always held an outstanding place in the program of the school. More than one-third of the students of the entire school are members of that department. Its activities consist of the sponsoring of the annual commercial contest, duplicating work of the school and duplicated journalism activities.

The commerce department is composed of the following different groups of students:

1. Business Education—those students who are preparing to become capable, practical, ambitious commercial teachers. These students study both the content course and educational subjects in the field of business education.

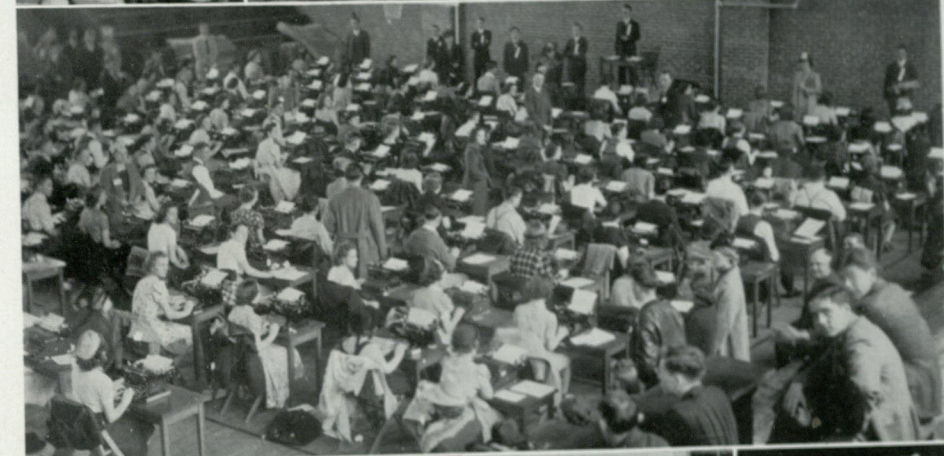
2. Business Students—those students who aim to become office workers who are prepared in general stenographical, clerical and accounting fields.

It is the aim of this department to offer such work as will develop teachers who are able to fit themselves and their subjects to the community and the school in which they go as teachers, to develop office workers who know office routine, are trustworthy, capable, and eager to advance in the business field; to make as many links between the business field and the commerce department as possible in order that the students of this department may have actual business contacts before leaving school; to develop the students of this department so that they will be able to cope with economic situations as they meet them vocationally, socially and economically.

Blanche M. Wean,
Chairman
Making the test
Mimeographing and
assembling the tests



Giving the typing test



Grading the test
Chairmen and co-
chairmen with
trophies



W. C. Maxwell pre-
sented the school
awards

Winners of the con-
test with trophies



CAMPUS CRIER

THE Campus Crier staff is composed of students who are interested in working on the Campus Crier—the weekly duplicated paper. The staffs are divided into three divisions—the editorial, business, and production.

1939 Staff

EDITORIAL

Editor-in-chief.....Paul H. Jones
 Editorials.....Alma Zarse, Hazel Routier
 Proof Reader.....R. Henning
 Reporters.....Jeannette Bell, Arline Feinberg,
 Dorothy Thomas, Hope McBride, C. Eldridge
 Feature Writers.....James Cox, June Griffey, L. Wheatley
 Sports Writers.....R. Hedrick, M. Payne, H. Scott

BUSINESS

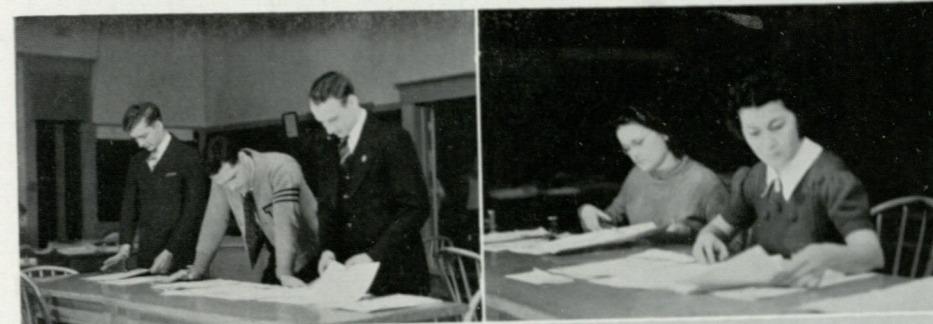
Business Manager.....Dorothy Ford
 Advertising.....Nellie Mullinix, Mary L. Smith,
 Maxine Edmondson, Doris Bottorff
 Collection.....Dorothy Amick, F. Higgins
 Circulation.....Thomas Janeway, Charlotte Anderson,
 Donna Cox, Mildred Carter, Viola Williamson

PRODUCTION

Production Manager.....Dale Jackson
 Make-up.....Bertha Marting
 Typists:
 Earl Crisler, Melba Huber, Wilcie Rea, Carl Butt, Helen
 Smith, Marguerite Fraser, Mildred Hamilton, Lola Farrell,
 Thelma Williamson, Roberta Walter.
 Art.....Harriett Milling, Chalmer Dunn
 Mechanical.....Alvin Beumer, Robert Graham, Charles Pope

SPONSORS

Blanche M. Wean Mary Barton Johnson



1. Beumer, Jones, and Jackson working on dummies.

2. Ford and Thomas making up the ad dummies.



3. Huber, McClung, and Enlow cutting stencils.



4. Jones, Hamilton, and Jackson working on art.



5. Time out for supper.



6. Graham, Payne, and Wheatley mimeographing.



7. Assembling the completed papers.



8. Carter and Thomas getting Criers ready to mail.

KAPPA PI BETA

Honorary Journalistic Fraternity

FOUNDED at Central Normal College during the summer of 1932 with 12 charter members. Members are elected from those students who have worked at least 15 weeks as members of the Campus Crier staff.

The aims of the fraternity are:

1. To further the publication of the school newspaper.
2. To recognize ability of students who are outstanding in service.
3. To further the best interests of Central Normal College.
4. To promote an interest in journalism and assist inspiring journalists.
5. To promote the interest of duplicated papers everywhere.

The badge of the fraternity is a scroll superimposed with the letters KPB and bears the inkwell and quill.

Winners of Honor Awards made at Razz Banquet:

PAUL H. JONES
THELMA WILLIAMSON

Paul Jones,
President
Thelma Williamson,
Vice-President
Hope McBride
Treasurer
Margaret Martin,
Secretary
Idaperl Williams,
Keeper of Archives
Melba Huber,
National Organizer
Goldiene Akers

Carl Butt
Earl Crisler
Chalmer Dunn
Eugenia Johnson
Doris Bottorff
Jeannette Bell
Charlotte Anderson

Arline Feinberg
Peggy McCoun
Thomas Janeway
Betty Hadley
Ellene Glossop
Kenneth Andrews
Hazel Routier

Robert Graham
Beryl Fortner
Nellie Mullinix
Virginia Huxford
Laurence Wheatley
June Griffey
James Cox

Donna Cox
Maxine Edmonson
Alvin Beumer
Dorothy Thomas
Ruth Terry
Wilcie Rea
Harriet Nell Milling

Mary Alexander
Dorothy Ford
Helen Smith
Catherine Eldridge
Meredith Payne
Eugene Boothroyd
Paul Patterson

Weldon Morgan
Mildred Hamilton
Mary Lou Smith
Doris Broyles
Roberta Walters
Lola Farrell
Bertha Marting

Mildred Carter
Marguerite Fraser
Robert Hedrick
Charles Pope
Viola Williamson
Audra Roberts
Alma Zarse
Rullus Williams







MUSIC

J. I. Skidmore
Band Director

Marjorie Dean Gaston
Head of Music Department

THE Music Department has witnessed one of the most active seasons in the history of the school this year. In addition to preparing students for the profession of music teachers and supervisors, it is the desire of the department to furnish programs for the college and the surrounding communities. This, it has done extensively the past year.

The Band and Orchestra, under the direction of Mr. James I. Skidmore, the Girls' Glee Club, the Mens' Glee Club, and the College Chorus, directed by Miss Marjorie D. Gaston have furnished several programs for Convocations, Churches, High Schools, and other organizations of the community. Many other musical organizations have been unusually active. The C. N. C. Cornet Trio composed of Harold Long, Weldon Morgan, and Thomas Wilson, accompanied by Wendell Mann has become such an important organization of the college, that it will be greatly missed after this year as all three cornetists are seniors of the department. Virginia Belle Keeney, Maxine Edmondson, and Mary Maxine Tharp, accompanied by Ruth Carolyn Dawson are members of the Treble Tone Trio whose programs have been very much in demand all year. The C. N. C. Girls' Sextet is composed of Arline Feinberg, Louise Starkey, Virginia Belle Keeney, Edna Mae Mitchell, Mary Maxine Tharp, and Mary Meeks, accompanied by Ruth Carolyn Dawson. A new ensemble on the Campus this year is the C. N. C. String Ensemble whose membership consists of Raymond Albrecht, Jr., violin, Gerald Haffner, violin, June Griffey, cello, and Ruth Carolyn Dawson, piano. One of the favorite organizations is that of the C. N. C. Mens' Quartet whose members are Sam Blue, Philip Shaw, Jack Shaw, and Clyde Sallee.

A few of the outstanding events of the department were the broadcast from WFBM in Indianapolis on the Farm Bureau program; the broadcast on the program given by Central Normal College on the college hour; the Christmas and Easter cantatas; and the participation of eighteen students, selected from the chorus, in Handel's Oratorio, "Judas Maccabaeus," presented by DePauw School of Music and assisting choirs as the final program of the Music Festival.

The music students sponsored a concert given by the Madrigal Singers of Arsenal Technical High School under the direction of Mr. Russell Paxton, May 5.

The department is now working on music for Commencement Week. One of the evenings will be devoted to the Music Recital. It will be given by the seniors of the department assisted by the orchestra.



BAND



ORCHESTRA



GLEE CLUB

Composed of
Men's Chorus
and
Girls' Chorus

Miss Gaston, *Director*



**GIRLS'
SEXTETTE**

Ruth Carolyn Dawson
Arline Fineberg
Louise Starkey
Virginia Belle Keeney
Edna Mae Mitchell
Mary Maxine Tharp
Mary Meeks



MEN'S QUARTET

Sam Blue
Phillip Shaw
John Shaw
Clyde Sallee

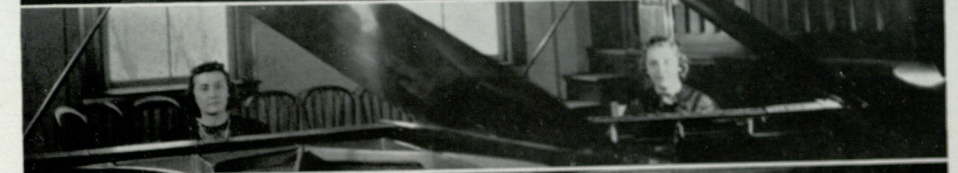
Cornet Trio

Wendell Mann,
accompanist
Weldon Morgan
Harold Long
Thomas Wilson



Piano Team

Ruth Carolyn Dawson
Virginia Belle Keeney



Treble Tone Trio

Ruth Carolyn Dawson,
accompanist
Maxine Edmonson
Virginia Belle Keeney
Maxine Tharp



String Ensemble

Ruth Carolyn Dawson
Raymond Albrecht
Louise Starkey
June Griffey
Gerald Haffner





ENGLISH CLUB



FIRST ROW:

Prof. Wayne Shumaker, Sponsor, Thelma Williamson, Lola Farrell, Lowell Coats, Rosemary Jones, Catherine Eldridge, William Metsker.

SECOND ROW:

Hope McBride, Bertha Marting, Charlotte Anderson, Howard Mann, Eudora Ellis, Alvin Beumer, Marian Edmonson, Marguerite Fraser, Alma Zarse, Lethia Wilson.

THE activities of the English Club for the year 1938-39 have been many and varied. Although the group was small, much was accomplished.

At an early meeting Dr. H. M. Whisler of Butler University gave a very interesting lecture. Miss Winona Stuart of the Danville High School was another interesting and well-liked speaker. She pointed out the value of effective speech.

A "Professor Quiz" party was the high light of the social events. William Metzger of Lafayette made a very entertaining professor.

"Belles Lettres", the annual publication of the best writings of the C. N. C. students, will be published in June. Contests have been held for short stories, poetry, and editorials.

CALTRIGONIAN CIRCLE



FRONT ROW:

Kenneth Griggs, James Cox, Howard Mann, Mary Margaret McCoun, R. L. Green, Dorothy Thomas, Chalmer Dunn, Louis Aikman, Meredith Payne.

BACK ROW:

Paul Durack, Laurence Wheatley, Everett Redden, Richard Falls, Chester Nicholson, Alma Zarse, Gerald Doeden, William Ratliff, Wilbur Richards, Donald Rogers.

THIS club was organized in the winter of 1937 for those students interested in the science of mathematics. This club was given the name—Caltrigonian Circle. Interesting meetings are held the second Wednesday of each month. These meetings consist of topics of interest to all math students. Also social meetings are held during the year. The officers for the year 1938-39 were as follows:

President—Stanley Garman.

Vice-President—Dorothy Thomas.

Secretary-Treasurer—Wilma Sutherlin.

The sponsor of this club is Dean Green.

DRASCENO CLUB



FRONT ROW:

Left to Right: Prof. Shumaker, Alma Zarse, Gerald Doeden, M. Margaret McCoun, Vernon Boswell, Joan Griffey, Charles Newton.

SECOND ROW:

Mary Alexander, Howard Mann, Bertha Marting, William Metsker, John Shaw, Harold Long, Alvin Beumer, Fern Hiday, Chez Haehl, Lethia Wilson.

IN order to promote an intelligent interest in drama and to provide for fuller opportunities of dramatic expression a group of students under the direction of Professor Wayne Shumaker organized the Drasceno Club.

Officers of the club are President, Gerald Doeden; Vice-president, Charles Newton; Secretary, Mary Alexander; Treasurer, Dorothea Ford.

New members are admitted to the organization by presentation by a try-out committee and after affirmative vote of three-fourths of the total membership of the club.

On Wednesday night, February 8, members of the Drasceno presented the Broadway success, "The Night of January 16" to a large and appreciative audience. This was the first play given by the organization. The members of the cast were: Kathleen Williams, John Airhart, Charles Newton, Chez Haehl, Alvin Beumer, Dorothea Ford, Howard Mann, Maurice McHaffie, Vernon Boswell, Fern Hiday, Gerald Doeden, Eugenia Johnson, Jack Shaw, Harold Long, David Hastings, Alma Zarse, Bertha Marting, Alice Amy, Peggy McCoun, Mary Alexander and Virginia Huxford. The play was directed by Professor Shumaker.



ART CLUB

FRONT ROW:

Thelma Hoppes, Alberta Thomas, Edna Mae Caudell, Louise Knauer, Christina Allison, Genevieve Griffey.

SECOND ROW:

Dorothea Orem, Catherine Eldridge, William Metsker, Virginia Moore, Charlotte Anderson, Prof. James Wilson, Sponsor, Eudora Ellis, Joan Griffey.

THE Art Club, one of the newer campus organizations, was formed in the fall of 1937. The purpose of the Club is to produce art, stimulate an interest in art, history in the school, and to bring into closer contact those interested in this field.

Anyone who is taking art or expects to take it is eligible for membership. Meetings are held in the art room at 8:00 the first and third Wednesdays of the month.

During the year we have taken up the study of various artists and their works. These have been presented by slides, exhibits, and discussions by guest speakers and club members. From February 1 to February 10 we sponsored an exhibit of Contemporary French Prints which we obtained from Indiana University.

The club has adopted blue and yellow for its colors and recently purchased gold palette-shaped pins to signify membership.

PHY-CHEM CLUB



FIRST ROW:

E. Ferguson, G. Doeden, R. Nale, E. Walker.

SECOND ROW:

M. Record, F. Buser, H. Mann, L. Dalton, R. Downey, C. Lynn.

THIRD ROW:

L. Aikman, J. Bullock, C. Nicholson, C. Dunn.

FOURTH ROW:

Dean Hunt, D. Rogers, W. Ratcliff, D. McCullough.

THE Phy-Chems was organized last year for the purpose of promoting interest in current research and scientific events. The programs this year included scientific talks and book reviews by guest speakers, scientific and educational movies, and reports given by members. Two social meetings were held during the year.

The officers are: Ernest Ferguson, president; Russell Nale, vice-president; Gerald Doeden, secretary-treasurer; Edgar Walker, chairman of the Program Committee. Dean Hunt, head of the Science Department, is the sponsor.



W. A. A.

FIRST ROW:

Idaperl Williams, Meldra Markland, Ella Reisert, Mary Geneva Clark, Mary E. Myers, Jeanette Bell.

SECOND ROW:

Helen Klipsch, Norma Nicholson, Viola Williamson, Charlotte Anderson, Mrs. Norris Porter, Sponsor, Ellene Glossop, Virginia Moore, Virginia Owens, Mildred Record.

THE Women's Athletic Association was organized in 1932. The purpose of our W.A.A. is to promote athletic games for women, to maintain fairness and cleanliness in all sports. Our motto is "Fight for Health."

Any girl enrolled in Central Normal College is eligible for membership when she has successfully passed the required achievement test and paid her annual dues.

The president appoints captains of various sports. Each member is given points for basketball, baseball, tennis, hiking, and archery. Tournaments are held in the various sports at the end of each term. Two and one-half points are received for each mile of hiking, and five points are received for each hour of all other sports. When a member has earned five hundred points she is awarded a large purple "N"; when she has earned one thousand points she is awarded a sweater; when she has earned two thousand points she is awarded a gold pin and guard. Misses Meldra Markland and Geneva Briggs were awarded an "N" for this year and Misses Wilma Sutherlin, Grace I. Clark, and Mary G. Clark were awarded sweaters.

Officers of the organization are President, Grace I. Clark; Vice-President, Mary E. Myers; Secretary, Jeanette Bell; Treasurer, Ella Reisert; Point captain, Meldra Markland; Sponsor, Mrs. Norris Porter.

STUDENT CHRISTIAN ASSOCIATION



BACK ROW:

Virginia Belle Keeney, Warren Thomas, Mildred Sparks, Lowell Coats, Morris Wade, Ruth Carolyn Dawson, Charles Newton, Mary Frances Curry.

FRONT ROW:

R. L. Green, Sponsor, Ruth Thomas, Vernon Boswell, Eunice Meeks, Phillip Shaw, Bertha M. Watts, Sponsor.

IN March, 1939, the former Y. M. C. A. and Y. W. C. A. of Central Normal College were incorporated into the present Student Christian Association. This association is a part of the United Youth Movement which has as its theme, "Christian Youth Building a New World." The following nine points form the plan of action in the effort to build a Christian world:

1. Developing a program of personal religious living.
2. Helping other young people to be Christian.
3. Assisting in bringing about world peace.
4. Working to help solve the liquor problem.
5. Helping to build a Christian economic order.
6. Providing a constructive use of leisure time.
7. Being Christian with interracial and cultural groups.
8. Preparing for marriage and Christian home life.
9. Developing a Christian type of patriotism.

For the spring and summer of 1939 the Student Christian Association of Central Normal College has planned a program on the central theme, "Preparing for marriage and Christian home life."

At the regular meeting each Tuesday at 8:00 p. m., college talent is used and also several excellent out-of-town speakers have been secured.

The officers of the S. C. A. are as follows:

President, Virginia Belle Keeney. Associate President and Chairman of the Program Committee, Philip Shaw. Secretary and Chairman of the Publicity Committee, Hazel Routier. Treasurer and Chairman of the Finance Committee, Lowell Coats. Chairman of the Service Committee, Warren Thomas. Chairman of the Social Committee, Betty Cox. Sponsors, Deans Watts and Green.

N. Y. A.



FIRST ROW:

Lester Brown, Robert Graham, Mazy Louise McFerran, Mildred Record, Mary Maxine Tharp, Dorothy Amick, Vernon Boswell, Carl Butt.

SECOND ROW:

Norma Nicholson, Lena Nicholson, Doris Bottorff, Idaperl Williams, Irene Watson, Eunice Meeks, Mary Ricks, Hazel Routier.

THIRD ROW:

George Varga, Glenward York, Leon Dalton, Edgar Walker, Charles Kitley, Merrill Miller, John Huntington.

FOURTH ROW:

Alvin Beumer, Glendon Moon, Raymond Albrecht, Richard Falls, Kenneth Griggs, Austin Meyers.

CENTER BACK:

Dr. P. R. Hightower, Gerald Doeden.

THE N. Y. A. has become one of the most important programs on the campus. When the college wants an individual to do an important job a call goes out for an N. Y. A. student, because people "in the know" realize that they can depend on N. Y. A. help. All of the students on the N. Y. A. program have been carefully selected on the basis of financial need, scholastic ability, and character. About fifty young men and women have earned nearly all of their tuition this year by N. Y. A. work, and at the same time have been engaged in work which is of practical benefit to them in enlarging experiences and developing abilities. The N. Y. A. program without doubt meets a great need in Central Normal College.

THE BOOSTER CLUB



FRONT ROW

M. Martin, L. Ward, H. Milling, P. McCoun, D. Amick, D. Thomas, L. Wilson, B. Cooper.

SECOND ROW:

C. Eldridge, S. Blue, M. Miller, P. Durack, P. Parker, J. Kennedy, E. Glossop.

THIRD ROW:

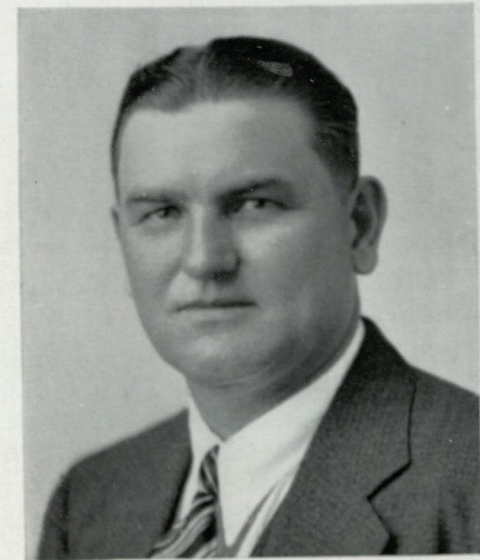
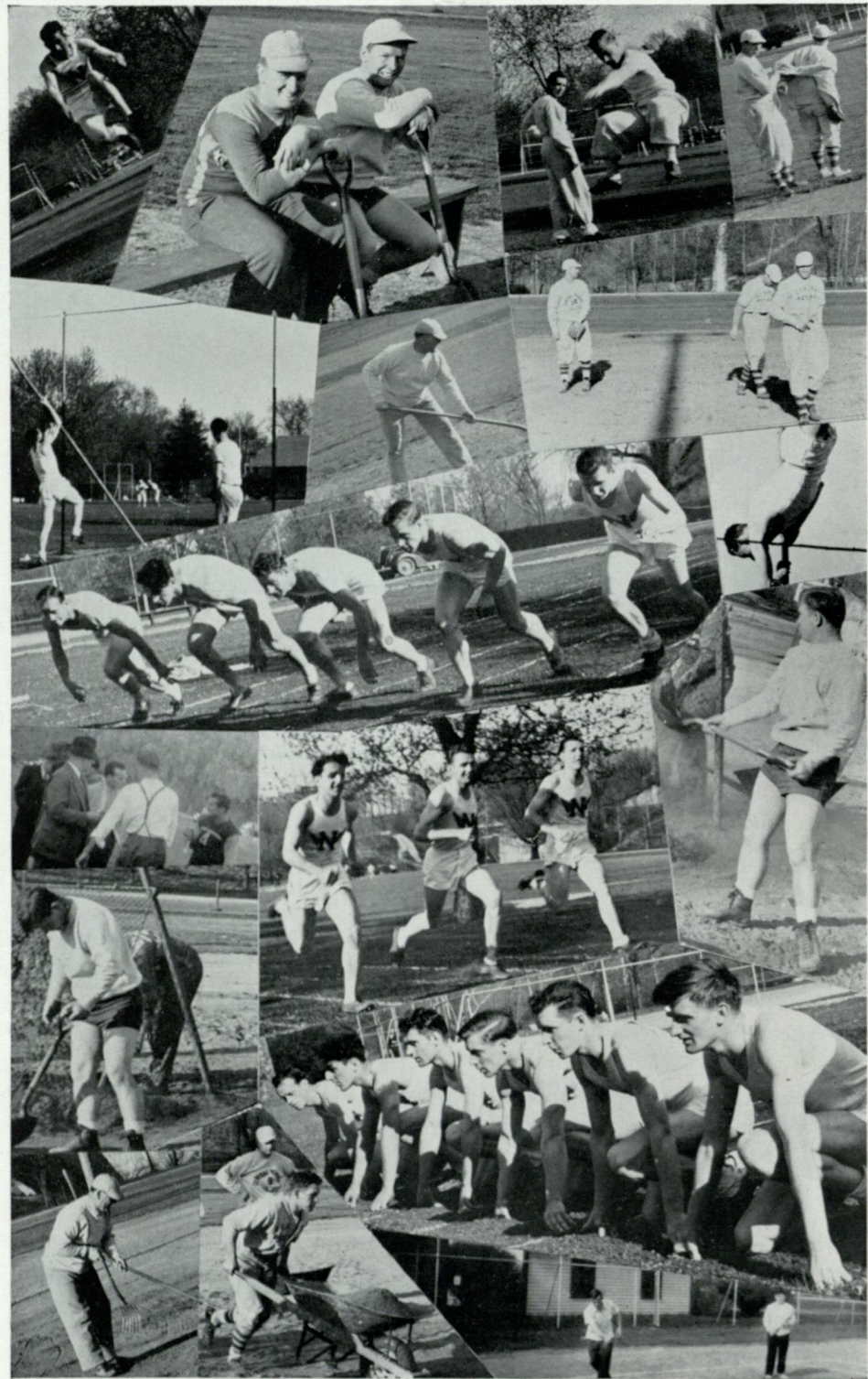
J. Cox, F. Crum, B. Shank, C. Pope, D. Hastings, E. Younger.

ON January 10, 1939, twenty-six students gathered in the Recreation Room and organized the Booster Club of Central Normal College. The purpose of this organization is to boost all the school activities of C. N. C. The organization is directed by committees elected by the group in place of club officers. Professor Winfrey is faculty sponsor.

All students are eligible for membership when they prove an interest in the boosting of our Alma Mater.

The group activities grew rapidly. They promoted pep sessions, decorated the gymnasium, and advertised the ball games. A parade was held before the Homecoming Game.

The following were chosen as permanent committees for the year: Rooters Committee: Floyd Crum, Chairman; Catherine Eldridge, Ruth Terry, and Madge McClanahan. Pep Committee: Morris Etter, Chairman; Ellene Glossop, Hope McBride, and Betty Lou Cooper. Club Secretary: Peggy McCoun.



Coach Sewell H. Leitzman



Lettermen's Club of 1938-39

BASKET BALL

THE purple Warriors gathered during the latter part of November and began activities in preparation for the winter warpath.

Chief Leitzman was blessed with a nucleus of lettermen and experienced men from the team of 1937-38.

After two weeks of practice, the Warriors encountered the Anderson Indians on Dec 1, in a hardwood battle. The following warriors were in the starting lineup: Scott and Cobb, forwards, Wallace and Farr, guards, and McGarvey at center. After a hard fight, Central Normal lost by a score of 29-28.

On December 8, Taylor University journeyed to the Warrior encampment. They returned to Upland, a badly beaten aggregation. The score was 33-27.

The night of December 15, found the St. Joseph Cardinals in Danville. After a thrilling game, Central Normal eked out a 33-27 win over the up-state priests.

The Manchester Spartans were the next foe. The Warriors were out for revenge for a severe shellacking they had received in football at the hands of the warring Spartans, and was revenge ever sweet? Central Normal took them into camp to the gay old tune of 40-34.

After a merry Christmas vacation, the purple warriors encountered the Huntington up-staters. The local braves literally scalped them by a score of 55-24.

Next week on the fateful night of January 19, the purple Warriors took a southern trek to the encampment of the Little Oaks at Oakland City. The Oaks, with the aid of two Chinese Officials, shaded our boys by the score of 45-34.

January 23, found Coach Phillips and his Ball State Cardinals as our foe. Seemingly there was too much Risinger for Central Normal. The Warriors took a 43-36 trimming from the Cardinals.

Eastern Illinois at Charleston was the scene of the Warriors' next campaign for victory on the night of January 26. Somehow or another the boys tried to execute the fast-breaking style of offense and their efforts were futile. They learned a costly lesson, and were defeated by the score of 45-28.

February 2, found the Little Oaks of Oakland City in Danville. Revenge was sweet, and the Oaks were massacred by the score of 50-27.

Basketball Homecoming was held on February 4, and the Earlham Quakers of Richmond furnished the opposition. The Warriors

upset the drug store dope bucket and sent the highly touted Earlhamites homeward quaking to the tune of 44-31. Many old grads were back and readily realized that Central Normal had another good team.

February 9, the tribe embarked to Huntington to oppose the up-state preachers. The boys were a little over-confident but nosed out the Huntingtonites by the score of 33-27.

February 11, and the local hardwooders were in Muncie to engage in warfare with the Ball State Cardinals. There was too much gardening, or something, on Gardener's part and the Warriors were conquered by the score of 41-18. This was the only team the Normalites didn't defeat during the season.

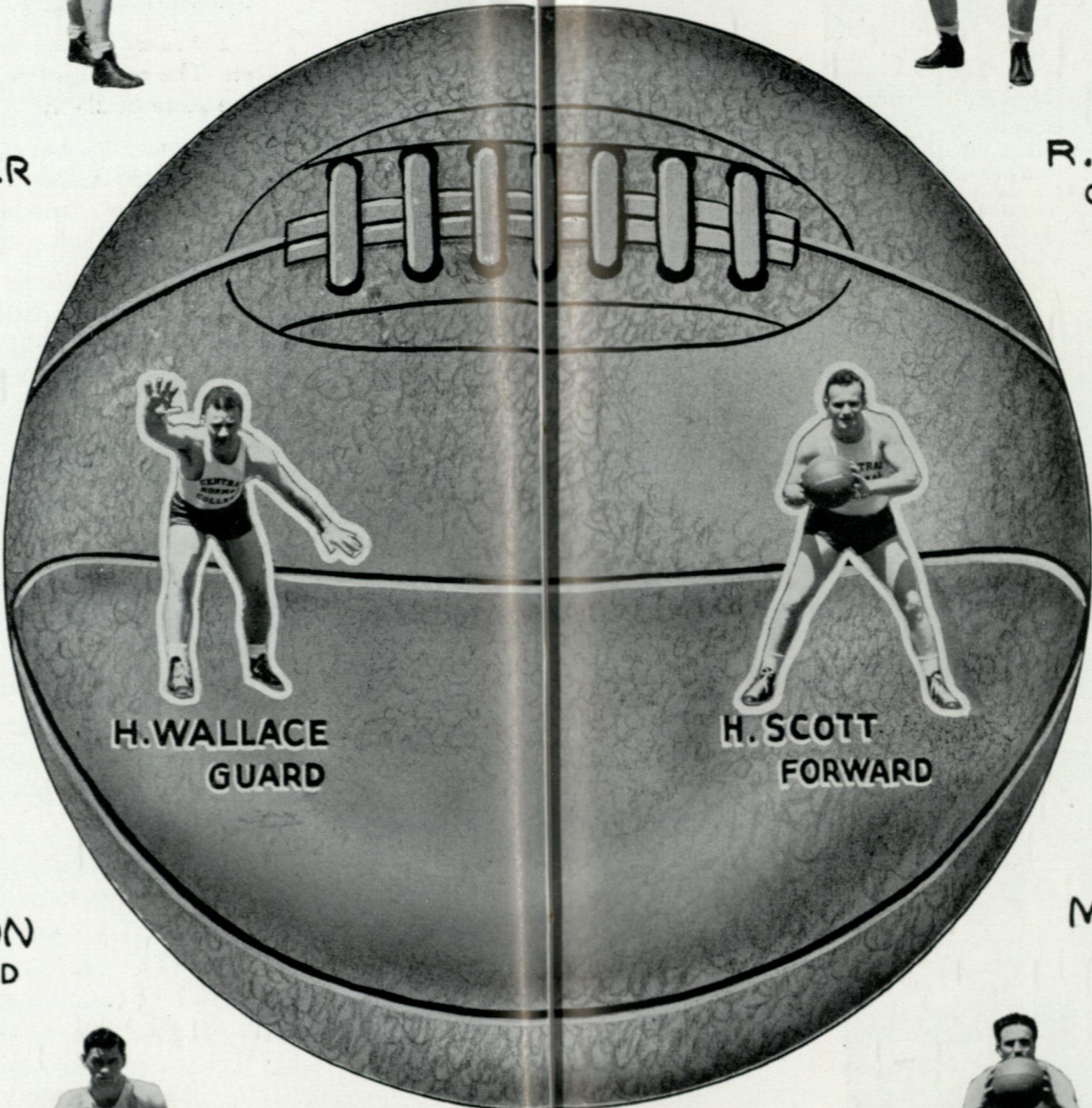
On the cold winter night of February 15, our boys journeyed to Hanover to play the southern Hill Billys. Upon arriving there was no heat in the barn-like gym. Vanliew, the Hanover Coach-farmer, and his boys, with the aid of two blind men, trounced our boys by the score of 74-26.

The Civic Auditorium in LaPorte, on February 21, was the scene of the Warriors' next encounter. The Valparaiso University Uhlans were the foe. This was a thrilling game in which the score was tied ten times and the lead changed eleven times. Through team work and a desire to win, the local boys came out on top by the score of 44-42.

Next week, on February 24, Hanover came to Danville. Revenge was very sweet and the Warriors poured it on Vanliew's boys to the tune of 41-25.

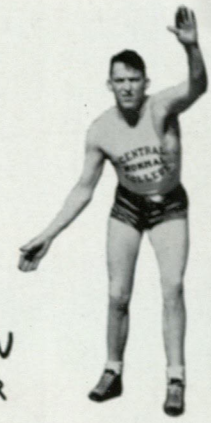
More revenge was gathered by the local warriors, when on the night of February 27, the suckers of Eastern Illinois were thumped to the tune of 41-35.

This game brought to a close a successful basketball season. Much credit should be given to Coach Leitzman, the varsity, and to those who faithfully practiced and didn't make the team. Any winning team must have reserve strength.



T. JANEWAY
FORWARD

H. OLIN
GUARD



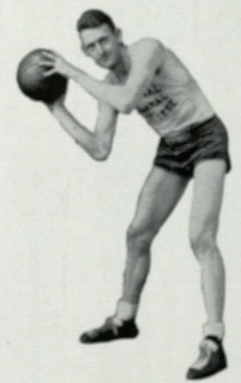
R. SHAW
CENTER



R. CASH
GUARD



CAPTAIN
E. MCGARVEY
CENTER



M. COBB
FORWARD



J. KENNEDY
FORWARD



N. BELL
GUARD



JACKSON
FORWARD



E. YOUNGER
FORWARD



S. WILLIAMS
CENTER



M. FARR
GUARD



Seventy-two

FOOTBALL

THE 1938 school activities at Central Normal were ushered in by Old Man Football. With approximately fifty men answering the initial call, prospects seemed very good for a successful season. Although only a small number of lettermen returned, it looked as though the team would be bolstered by a great variety of underclassmen. The underclassmen were small and of course inexperienced, but nevertheless they helped to round out the varsity squad.

When Tony left Danville for Charleston, Illinois there were thirty football aspirants planning an attack by which they could emerge victorious from their first game of the season. Eastern Illinois Teachers were to furnish the opposition. This being the first game, both teams had high hopes of emerging victorious. After the opening ceremonies both teams lined up for the kick-off. For Central Normal we found the line consisting of: Andrews and Miller, ends; Falls and Hedrick, tackles; Jones and Hess, guards; and Kelly, center. In the backfield we had Schwartz at quarter; Wallace and Kennedy at halves, and Scott at fullback. Jones kicked the ball to Eastern Illinois' five yard line. From then on the game proved to be a nip and tuck affair with neither team being able to make much head-way. Eastern Illinois was finally able to score on a series of line plunges. The extra kick was blocked by Jones. Thus the Normalites turned eastward defeated in a close contest by the score of 6-0. The game was marked by the tackling of Jones, Kelly and Miller and the pluck of the second team line.

The following Saturday found CNC's traditional foe, the Ball State Cardinals, journeying to Danville. Normal had high hopes of downing a battered Cardinal eleven which had taken a crushing from the Butler Bulldogs the previous week. The game was very close throughout the first half with Ball State finally scoring on a pass to lead at the half 6-0. The second half proved to be quite a different story as the Cardinal team witnessed little difficulty in winning over a game but tired Normal eleven 26-0.

Talk was high the week of the Hanover game. Practice sessions were spirited as Normal prepared for their engagement with the Panthers. The game opened with both teams struggling in mid-field. Later Hanover scored a touchdown on a brilliant end run. They accomplished this same feat three times more. In all Hanover was able to score 26 points in the first half. The Normalites gained some life during the intermission and held their foe scoreless for the remainder of the contest. Thus Central Normal was forced to mark up another defeat. The game was rather colorless except for the playing of Boalbey, a new addition to the Normal eleven.

October 14 found Coach Leitzman and his boys traveling to Richmond, Ky., for a game with the highly touted Eastern Kentucky team. Normal received the kick-off and with Schwartz running the ball back, it looked as if a touchdown would result. However he was tackled on the thirty yard line. After the ball changed hands several times Eastern Kentucky intercepted a Normal pass and ran for a touchdown. From then on the southern boys seemed to have things pretty well at hand and went on to defeat a stubborn Danville eleven. The game was marked by the tackling of Jones and Miller. It was also in this week's practice that Scotty, the regular fullback, was lost through a serious hip injury. This injury kept him from the line-up for the remainder of the year.

On October 23, Defiance journeyed from across the state line to tackle the Purple Warriors. The Leitzmanmen were inspired for this contest and soon proved their courage. The ball saw-sawed back and forth consistently. Then with the ball on the 50 yard line, Coach Leitzman inserted "Butch" Davis into the line-up and on the first play he ran the ball behind perfect blocking 52 yards for a touchdown. But alas, lady luck seemed to have a hand on Normal as the ball was called back and Danville was penalized. After several more downs, Eddie Pilarski caught a pass in the end zone from "Norm" Bell which was good for six points. Clark dropped the extra point; thus Normal led 7 to 0. Soon after Defiance scored on a series of line plunges and kicked the extra point to tie the score. The game ended with Central Normal in possession of the ball on their own six yard line. The contest will be remembered for the outstanding performances of Kennedy, Boalbey, and Davis.

The following week, Manchester traveled to Danville to furnish the opposition for the Normal eleven's home-coming game. Manchester, fresh from a victory over DePauw, soon proved they were too much for a crippled Normal team. The Normal team did their best to show the returning grads their wares and threatened to score constantly but always lacked that scoring punch. The game was rather dull except for the driving of the line at times throughout the game. Etter was lost to the team through an injury sustained in this contest.

November 6, found CNC hastening to Collegeville to furnish the opposition for the St. Joe Home-coming. From the opening kick-off Normal seemed well on her way to a victory. Again they seemed to lack the scoring drive. After the ball changed hands several times St. Joe managed to score on a series of line plunges. The Danville eleven proved throughout the game their untiring spirit. The game ended with Normal in possession of the ball just 14 yards from a touchdown. The game was very colorful and especially gratifying was the vicious tackling of Jones and Janeway. It was after this game that the St. Joe squad named Paul Jones as the outstanding guard they had played against during the season.

The last game of the season was played against the unscored on and undefeated Moorehead Kentucky team. The game was played in Tom Cat Stadium in Ashland, Ky., before a great crowd. The game was rather dull as the Moorehead team outweighed the Normal eleven approximately 20 pounds per man. The high point of the game occurred when Clark missed a forty yard field goal by inches, almost spoiling their unscored on season. Wallace, Davis, Rush, Stiers, Hedrick, Miller, Andrews, and Jones finished their final game for Central Normal.

Seventy-three



F. FOX
E.



M. MILLER
E.



N. BELL
H.B.



J. KENNEDY
H.B.



H. WALLACE
H.B.



R. FALLS
G.

E. PILARSKI
E.



B. DEERR
E.



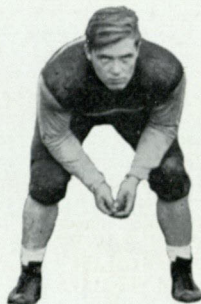
H. OLIN
G.



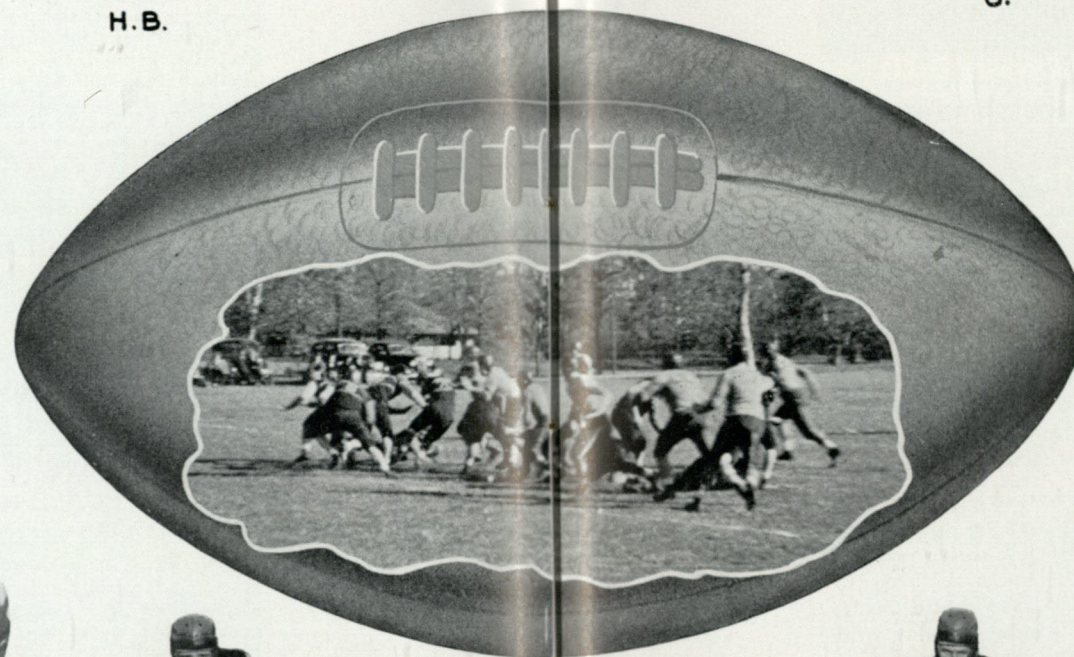
G. HESS
G.



R. OSTHEIMER
G.



H. CLARK
H.B.



H. MEEKS
F.B.



T. JANEWAY
T.



H. SCOTT
F.B.



S. WILLIAMS
Q.B.



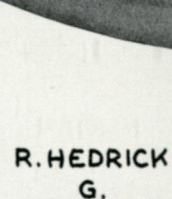
A. BOALBEY
F.B.



W. BROWN
C.



P. JONES
G.

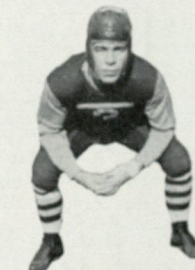


R. HEDRICK
G.

THEO. RUSH
G.



M. ETTER
G.



K. DAVIS
F.B.



L. EWING
Q.B.



C. SCHWARTZ
Q.B.



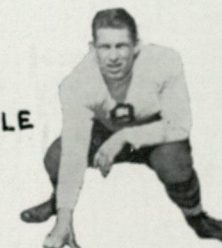
G. JAY
Q.B.



W. STIERS
T.

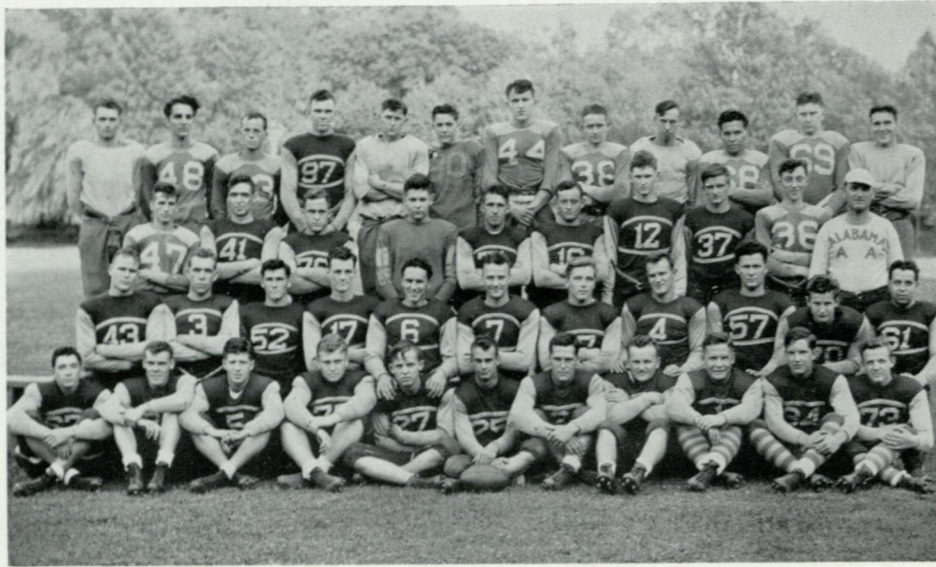


M. STRAHLE
C.



K. ANDREWS
E.





FIRST ROW:

W. Brown, J. Fox, K. Andrews, R. Falls, G. Hess, C. Kelley, P. Jones, R. Hedrick, M. Miller, B. Deere, G. Jay.

SECOND ROW:

H. Meeks, K. Davis, N. Bell, S. Williams, J. Kennedy, H. Scott, H. Clark, H. Wallace, R. Ostheimer, C. Schwartz, L. Ewing.

THIRD ROW:

F. Crum, T. Rush, M. Etter, W. Downs, M. Strahle, H. Olin, T. Janeway, E. Pilarski, P. Youngblood, Coach Leitzman.

FOURTH ROW:

G. Varga, A. Boalbey, V. Harrell, E. Younger, B. West, F. Hall, R. Shaw, N. King, R. Ostrander, D. Sheperd, W. Stiers, R. Shank.

NEXT year's varsity squad will miss the services of the seniors graduating this year. Wallace was probably the most experienced backfield man on the squad. He was a good passer with a great amount of running ability. Wallace was injured in the early part of the season, and was unable to return to the line-up until next to the last game. The other senior backfield men, Davis and Scott, played steady ball all season. Davis was an excellent line plunger and would have scored on two occasions, if the ball hadn't been called back because of penalties. Scott's injury kept him out of the line-up most of the year, but he proved an asset to the team when he did play.

Looking into the future to see definitely what the personnel of next year's ball club will be is a difficult task. However, there do seem some particular standouts that will be called upon to fill their duty. In the backfield we have Kennedy, Clark, Schwartz, Williams, Bell, Jay, and Boalbey as standouts. They all played good football this year and should continue next season. The line will have Kelley, Janeway, Falls, Olin, Deere, Pilarski, Etter, Hess, and Fox to rely upon. Pilarski scored this year's only points; Kelley is always a mainstay, Janeway should develop into one of CNC's best tackles. Falls will be a hard man to handle for any team, Hess, Olin and Etter should develop into good guards, Deere and Fox have gained enough experience to play a good brand of ball. These boys should make Coach Lietzman a strong forward wall. This year's graduating class especially want to wish next year's varsity much success in winning their ball games next year.

BASEBALL

FOR the first time in three years, Central Normal was blessed with an abundance of good baseball material. Early season rains hampered practice, but when the squad did get under way no time was lost. Besides the returning lettermen of last year, Coach Leitzman had reliable freshmen from which to pick a winning nine. They not only threatened to take the veteran's positions, but two or three earned varsity berths.

When weather permitted, the opening game of the season was at Indiana Central, the line-up was as follows: Schwartz, a freshman, at short; Kennedy at second; Hedrick behind the plate; Deere, another freshman at first; Brown in center field; Jones at third; Wallace in left field; and Davis in right field. Worrell was the pitcher and allowed only five hits to give Central Normal a 6 to 3 victory. At Franklin, the following week, the Grizzlies were defeated 13 to 4, and again Worrell was the winning pitcher.

With rain interfering with practice, the Warriors were dead on their feet when they took the field against Ball State at Muncie the following week. Worrell pitched masterful ball in the first inning, but lack of support, resulting in three errors, brought across five runs for the Ball State Cardinals. CNC batters were idle until the eighth and ninth innings, when a triple and homer brought in two runs in the eighth and a walk and two singles brought in one more in the ninth. With the tying and winning runs on base, Worrell just missed winning his own ball game, when his lone fly failed to result in a homer by three feet. Thus CNC suffered defeat at the hands of the upstate athletes to the tune of 5 to 3.

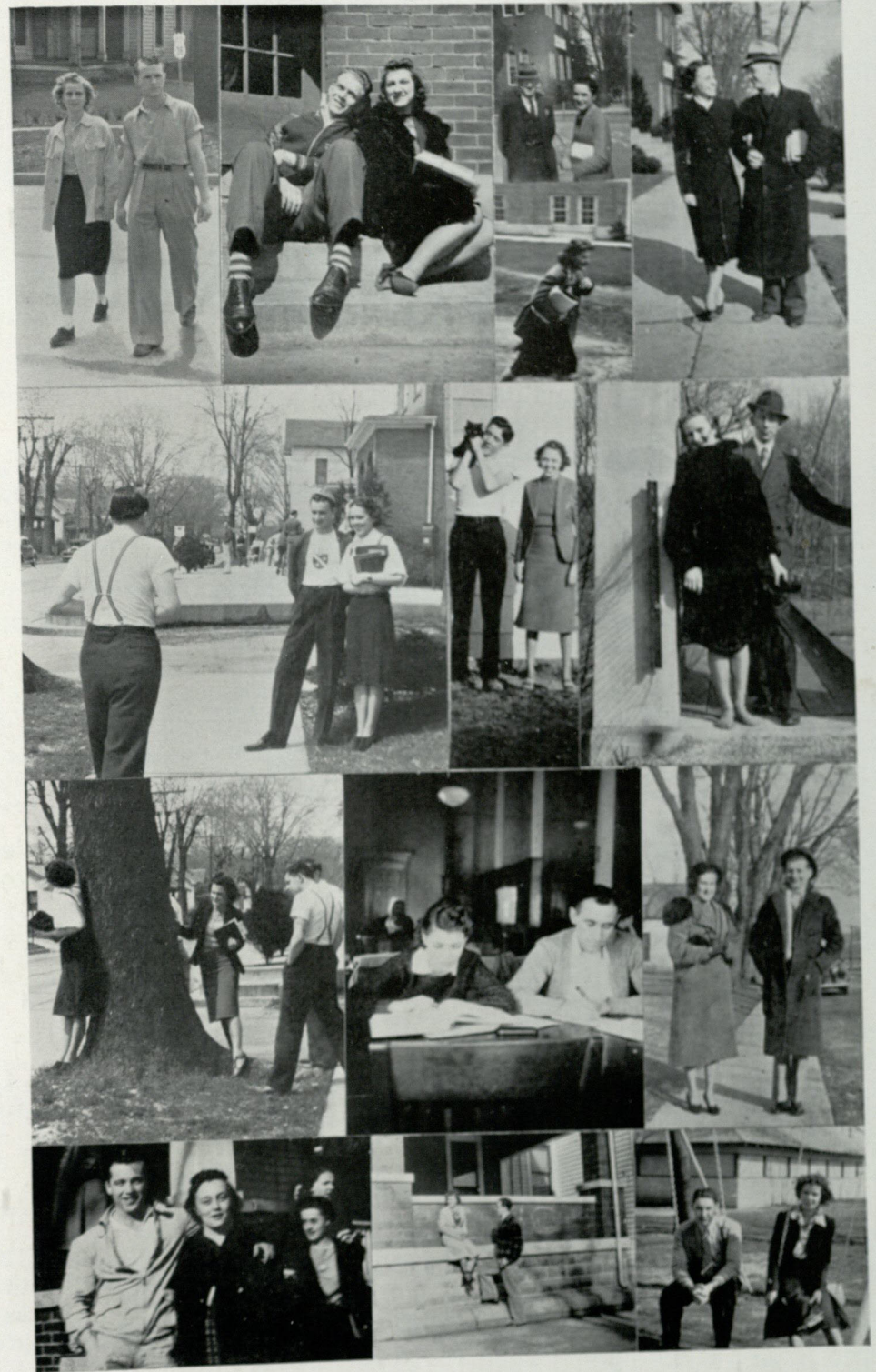
Manchester was the Warriors' next foe, and the locals evened up for the overwhelming football defeat suffered at the hands of the Spartans. Worrell and Brown worked on the mound, with Worrell receiving credit for the victory. The game was called in the last of the eighth inning with Central Normal in a commanding 20 to 4 lead.

Hanover journeyed north to open the Normalites' home schedule. The game featured the fine pitching of Worrell and exceptional batting of Wallace. The locals were behind 3 to 2 as they came to bat in the last half of the ninth. Jones singled, Wallace singled and Durack sacrificed. Blue bunted to score Jones and tie up the ball game. Schwartz smashed a sharp single between short and third to score Wallace and win the game 4 to 3.

This leaves CNC standing with four wins against one defeat. If they can win the remainder of their games, a Conference Championship is possible. Luck to them!

Next year's varsity should be very strong, since only Jones, Hedrick, Wallace, Davis, and Blue are lost through graduation. Jones and Hedrick have been mainstays for three years, while Wallace, Blue, and Davis are completing their second year on the squad.

SORORITIES



PSI CHI OMEGA

THE Psi Chi Omega Sorority was organized in 1909 on the campus of Central Normal College and has been active ever since.

This is a social organization with very worthy ideals set up by its constitution. It is the aim of the girls to be faithful to these ideals, to each other, and to Central Normal College. It endeavors to create and preserve a bond of love among its membership.

The Psi Chi girls sponsor a dance each term and have several parties throughout the year. An annual luncheon is held each fall in Indianapolis at one of the outstanding hotels for the alumnae and active members.

These girls are sponsored by Mrs. Carl H. Griffey and a group of fifteen outstanding ladies of Danville.

Enjoyable, companionable, lovely times are had at the Chapter House which is located very near the college at 280 East Main Street.



Louise Starkey
President

Hope McBride
Vice-President

Mrs. C. H. Griffey
Sponsor

Mildred Carter
Secretary

Eugenia Johnson
Treasurer

Christena Allison
Dorothy Amick
Alice Amy
Mary Jane Beaman
Doris Bottorff



Doris Broyles
Anne Christie
Bertha E. Christie
Betty Lou Cooper
Betty Cox



Donna Cox
Ruth C. Dawson
Maxine Edmonson
Betty Firestone
Ellene Glossop



Joan Griffey
June Griffey
Betty Hadley
Marguerite Harrison
Florence Higgins



Ruby Kearns
Virginia Belle Keeney
Jean Mahan
Margaret Martin
Joan Mays



Madge McClannahan
Peggy McCoun
Mary Meeks
Harriet Nell Milling
Martha Owens



Helen Parker
Mary Pierpont
Edith Roberts
Hazel Routier
Mary Smith



Mary Steinman
Mary Margaret Surber
Ruth Terry
Maxine Tharp
Ruth Wade



Roberta Walters
Lois Ward
Idaperl Williams
Kathleen Williams



ALPHA THETA

DR. WALDO WOOD, former C.N.C. president, becoming paternal-minded back in 1930, called together a group of ten high-type, scholastic, campus beauties, and, by a stroke of his fatherly hand, formed the Alpha Theta Epsilon sorority. These girls asked the girls of the former Maids Society in May of that year to affiliate themselves with the sorority. Then they chose Mrs. Mary Barton Johnson, who was a "Maid" and who is still serving us faithfully as sponsor.

This year has been a very successful one. The two formal dances and one Sport Hop, featuring Gaylen Goodwin's Melody Aces and the famous Wabash Ambassadors, have been the highlights of the college social calendar. The Alpha Theta Chili Suppers became famous on the campus this year.

Forty active members, six pledges and eleven honorary members form our present roll. Honorary members are: Mrs. Fanchon Griffey, Mrs. Daisy Marvel Jones, Mrs. Mildred Elson, Mrs. Nellie Beagley, Mrs. Glen Hovermale, Mrs. T. L. Lawson, Mrs. R. L. Green, Miss Nancy Baird, Miss Lorene Orr, Mrs. Gibbs, and Mrs. Leslie Steinback. We girls are very proud of our distinctive list of cultured honorary members.

All the Alpha Theta girls wish to extend to Mrs. Johnson their most heartfelt thanks for her keen interest in their welfare this year. Most certainly she has been an inspiration and faithful guide to all of us.



Lethia Wilson
President

Alma Zarse
Vice-President

Mary B. Johnson
Sponsor

Virginia Huxford
Secretary

Goldiene Akers
Treasurer

Charlotte Anderson
Jeannette Bell
Ganelle Bymaster
Helen Chance

Mary Frances Curry
Marion Edmonson
Grace Enlow
Arline Feinberg

Mildred Hamilton
Iona Hershberger
Thelma Hoppes
Louise Knauer

Zelma Kutch
Meldra Markland
Bertha Marting
Shirley McMullin

Edna Mae Mitchell
Clara Morse
Nellie Mullinix
Lena Nicholson

Norma Nicholson
Dorothea Orem
Virginia Owens
June Pruett

Ella Reisert
Audra Roberts
Alberta Thomas
Dorothy Thomas
June Westbay



DELTA SIGMA KAPPA

THE Beta Chapter of the Delta Sigma Kappa (national) Sorority was founded at Central Normal College June 19, 1932 with eighteen charter members. The purpose of the organization is for social and fraternal benefits to its members and to encourage social, moral, and educational advancement.

To become a member a girl must be of high moral character, possess proper social qualities and have a scholastic average of B. The emblem is the triangle with the characters and the pledge pin is the triangle.

Mrs. A. J. Wilson, sponsor, dearly loved by all the girls, has been an inspiration and a faithful guide for the sorority activities.

Two new chapters have been established for the year 1939—the Upsilon at Pine Village, Indiana and Omicron at Cleveland, Ohio.

The National Convention was under the sponsorship of the Chi Chapter at Detroit and was held at the Book-Cadillac Hotel in Detroit on May 20 and 21, 1939.

Patronesses: Mrs. S. M. Hendricks, Mrs. J. H. Vaughn, and Mrs. R. P. Jackson.



Catherine Eldridge
President

Lola Farrell
Vice-President

Mrs. A. J. Wilson
Sponsor

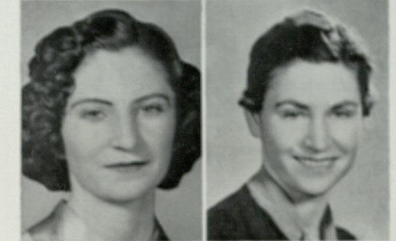
Mary Calloway
Secretary

Valentine Pleasant
Treasurer

Eunice Beard



Grace Ineva Clark
Mary Geneva Clark



Eudora Ellis
Fern Hiday



Mary Alice Huston
Helen Klipsch



Alice Markland
Celina Mathews



Virginia Moore
Mary E. Myers



FRATERNITIES



ALPHA MU KAPPA

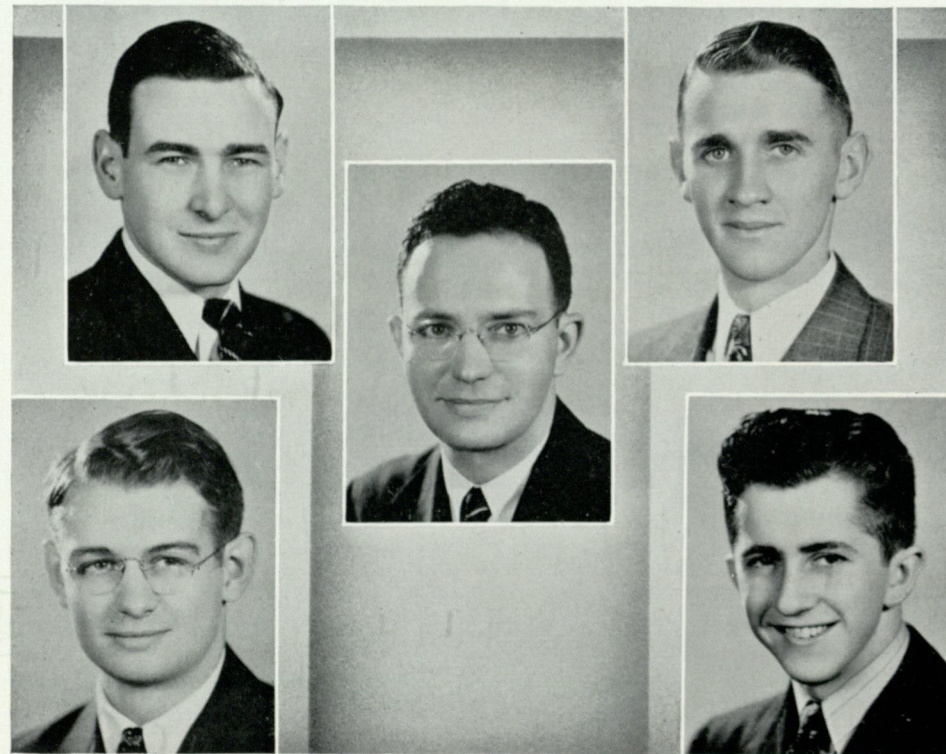
ALPHA MU KAPPA Fraternity was organized in 1904. It was primarily a High School Fraternity, composed of students attending Manual, Tech, Shortridge, and Broad Ripple.

In 1915 it merged with a national scholastic and received a national charter which was later abandoned.

In 1933 a chapter was organized on this campus under the guidance of Clayborne Blue. From that time until the present it has grown until there are approximately 120 members.

Alpha Mu takes pride in the fact that it is an honorary scholastic fraternity. To be admitted, one must attain an average of B or higher. Annually an award is given to the outstanding Senior man who ranks high in scholarship, leadership, and character.

The principles of the fraternity are spiritual and educational enlightenment, high morals and socialization of the individual.



Charles Pope,
President

Weldon Morgan,
Vice-President

Prof. Schumaker
Sponsor

Samuel Eggers,
Secretary

Laurence Wheatley,
Treasurer

A. M. K.

Louis Aikman
Ira Barker
Charles Bell
Max Bell
Alvin Beumer

Lowell Coats
Earl Crisler
Leon Dalton
Paul Deich
Kenneth Dickerson

Gerald Doeden
Chalmer Dunn
Paul Durack
Estal Eads
Edward Eikman

Ernest Ferguson
Stanley Garman
Chez Haehl
Norman Jarboe
Kendall Keller

Charles Kitley
Harold Long
Ernest Mauck
Edward Mounts
Austin Myers

Russell Nale
Edward Neimeyer
Charles Newton
Paul Patterson
Meredith Payne

Donald Rogers
Theodore Rush
James Strode
Maurice Thompson
Gene Weber
Thomas Wilson
David Shipley

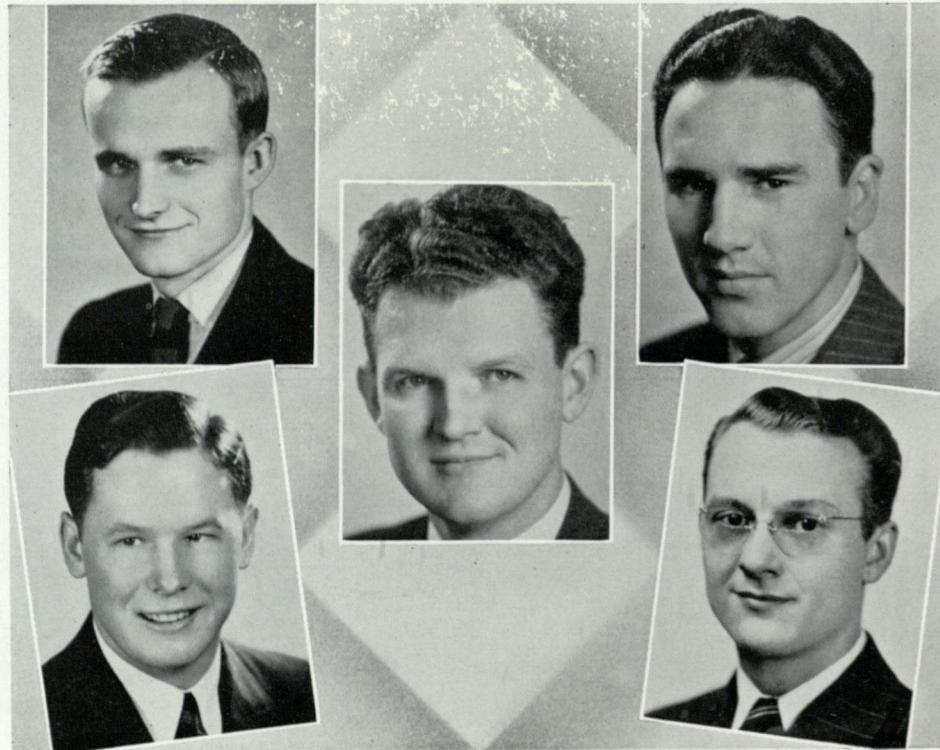


ZETA SIGMA

THE Indiana Alpha Chapter of Zeta Sigma was installed on the campus of Central Normal College in 1935. The fraternity takes its members from among the talented young men of the campus, helps these young men to realize their goals and arouses enough courage within them that they may reach their goals.

The fraternity was represented by the following lettermen: Merrill Miller, Melvin Farr, Jack Kennedy, Maurice Cobb, Harold Wallace, Hubert Scott, Kenneth Andrews, Thomas Janeway, Harold Olin, Richard Falls, Charles Worrell, Walter Jackson, Willard Brown, Harry Clark, Gordon Jay, Joseph Fox, Walter Stiers, Lloyd Hensley, and Sam Williams. The fraternity ranked high in scholarship and athletic ability.

Under the direction of its sponsor Dean Virgil Hunt, the fraternity sponsored three highly successful dances. One being its annual barn dance at the shelter house and the masquerade dance in the Grid Room.



James Mahan
President

Jack Kennedy
Vice-President

Dean Hunt
Sponsor

Merrill Miller
Secretary

James Cox
Treasurer

ZETA SIGMA



FIRST ROW:
W. Jackson, N. Petty, B. West, P. Parker.

SECOND ROW:
R. Shank, J. Shaw, G. Jay, J. Kennedy, J. Fox.

THIRD ROW:
N. Littel, W. Richards, N. Bell, W. Stiers, R. Falls, M. Miller, Dean Hunt, G. Hess, J. Cox, J. Mahan, R. Cash, R. Gibbs, H. Olin, L. Hensley.

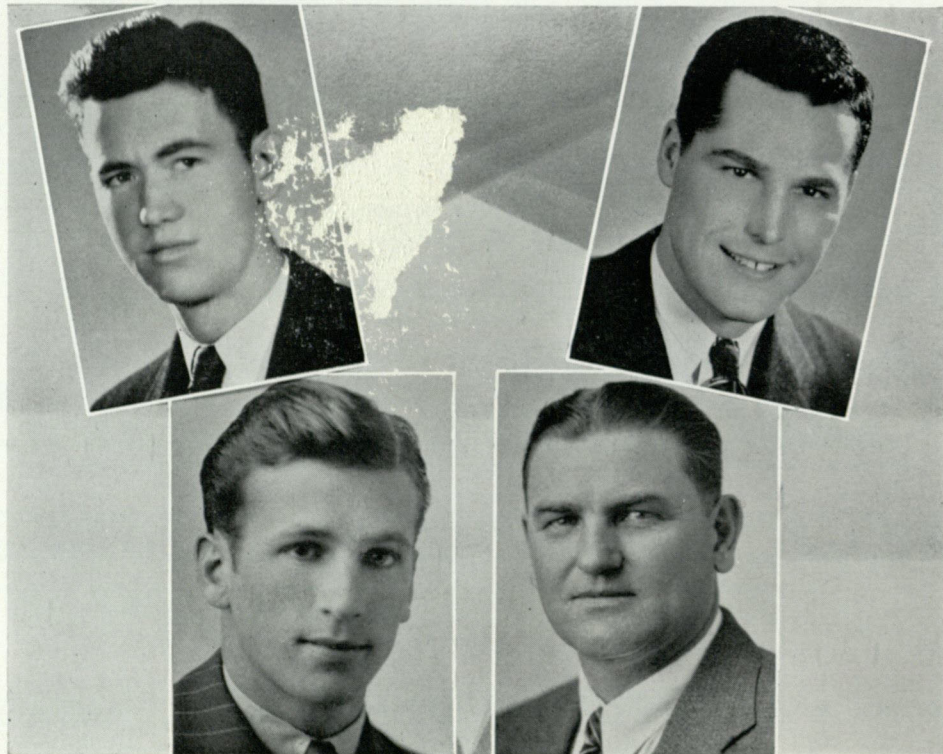
SIGMA LAMBDA PI

THE Sigma Lambda Pi Fraternity was organized in 1932 for the purpose of backing the Coach, and has helped out very much in doing so since that time. It was born in the "Old Reed House" (on the northeast corner of Tennessee and Clinton).

The Purple Tribe after reorganizing in the fall quarter decided upon having a rush party. Forty boys were rushed at a Chili supper. Around twenty of these boys became pledges and, after many weeks of strenuous activities were taken into the fraternity as brothers.

Many interesting things were carried out through the winter quarter, such as basketball games—our fraternity being undefeated throughout the season. The annual Spring Dance was given May 20. This was a sport dance, held in the Grid Room.

There are a large number of these boys that help make up the Letterman's Club. They are as follows: Paul Jones, Carvel McGarvey, Bob Hedrick, Maurice Strahle, Keith Davis, Lowell Ewing, Casimer Schwartz, Edward Pilarski, Bernard Deere, Morris Etter, Clarence Kelley, Everett Younger, George Varga and Alexander Boalbey.



Carvel McGarvey
President

Paul Jones
Vice-President

Floyd Crum
Secretary-Treasurer

Coach Leitzman
Sponsor

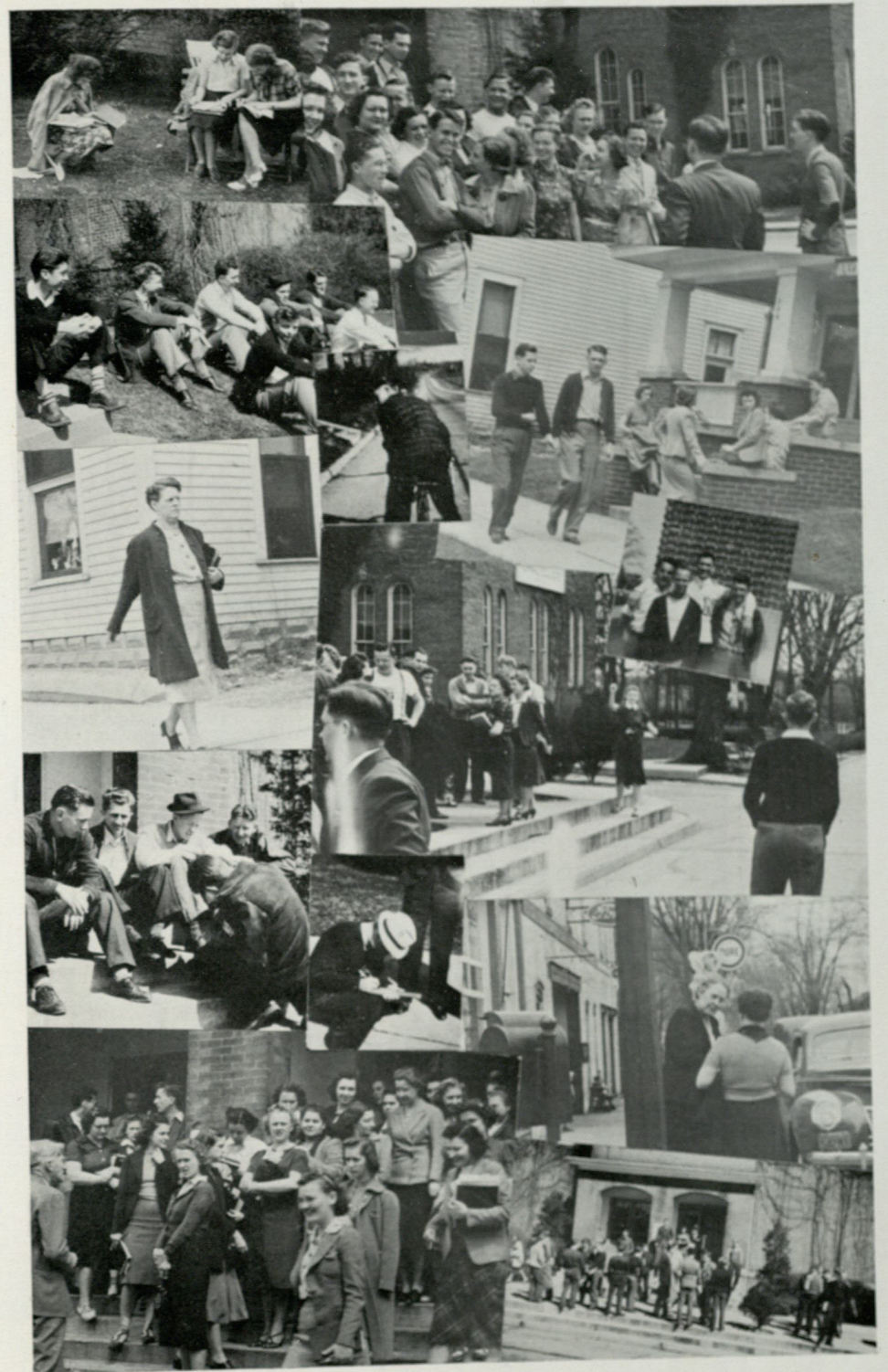
SIGMA LAMBDA PI



FIRST ROW:
A. Boalbey, M. Strahle, C. McGarvey, P. Jones, R. Hedrick, D. Waymire.

SECOND ROW:
G. Varga, V. Harrell, F. Crum, C. Schwartz, W. Tribby, W. Eller, D. Burton.

THIRD ROW:
E. Hudson, K. Warthen, E. Younger, D. Myers, W. Goff.



ADVERTISEMENTS

WE, the members of the Senior Class of 1939 wish to express our thanks to the business men of Danville and the surrounding community who gave us their loyal support. Their cooperation has helped to make the 1939 Centralian a success.

THE NATIONAL DUPLICATED PAPER ASSOCIATION

Sponsored by Commerce Department, Central Normal College, Danville, Indiana

HISTORY: The National Mimeograph Paper Association (now the National Duplicated Paper Association) was formed in 1934 at Central Normal College, Danville, Indiana, by schools located in all parts of the United States. The first year the membership was only 50 schools. In 1937-38 the paid membership included more than 300 schools of practically every state in the United States and Canada.

PURPOSES: To foster duplicated school papers in order to help them attain a higher quality; to give encouragement to amateur journalists and commerce students; to bind those who are interested more closely together so that a more common understanding and knowledge of what each is doing may result; and to make available to all the materials which are already published, and to publish any other needed materials if at all possible so that all may know about them.

SERVICES: Monthly Magazine . . . Critic Service . . . Extra help—In 1937 an IDEA BOOK was assembled, in 1938 another IDEA BOOK was assembled . . . Individual Critic Service . . . Loan Service . . . Duplicated Journalism Course . . . Contest . . . Annual Conference.

EXECUTIVE COMMITTEE

BLANCHE M. WEAN, Central Normal College, *Chairman*; MARGUERITE FRASER, Central Normal College, *Secretary*; THELMA WILLIAMSON, Central Normal College, *File Clerk*; CHALMER DUNN, Central Normal College, *Assistant*; ROY O. WILLIAMS, Central Y. M. C. A., Chicago, Illinois; THOMAS J. SHANNON, McKees Rock, Pennsylvania; E. L. JONES, Eljo Mimeo Shop, Indianapolis, Indiana; WM. D. TAYLOR, Kent State University, Kent, Ohio; J. RUSSELL BONER, University of Alabama, University, Alabama.

EXECUTIVE COUNCIL

Alabama: SISTER MARY FREDERIC, Bishop Tolen High School, Mobile, Alabama; *Colorado:* JEAN HUNT, Windsor, Colorado; *Indiana:* LEONARD FREED, Wakarusa High School, Wakarusa; *Iowa:* JULIA A. MYERS, State Teachers College, Cedar Falls; *Kentucky:* ALMA V. MILBY, Kentucky Female Orphan School, Midway, Kentucky; A. L. DANBURG, Pikeville, Ky.; *Nebraska:* L. M. HAUPTMAN, University of Nebraska, Lincoln; *New York:* ADELINE WOODRUFF, Van Hornesville High School, Van Hornesville, N. Y.; *New Jersey:* PAUL E. DIMMERS, Henry B. Whitehorn High School, Verona, New Jersey; *North Carolina:* L. H. JOBE, Raleigh, N. C.; *Ohio:* MARY K. HEETER, Jackson Township School, Grove City; *South Dakota:* H. S. HEPNER, South Dakota State College, Brookings, South Dakota; *Washington:* ETHEL H. WOOD, State Teachers College, Pullman, Washington.

MEMBERSHIP FEE—\$1.50 PER YEAR

EXCHANGE AND CRITICISM SUPPLEMENT INCLUDED

SPECIAL SERVICES: Individual Criticism—50c each; Loan Service—postage; Idea Books; Art Service.

CENTRAL NORMAL COLLEGE

Danville, Indiana

AN ACCREDITED TEACHERS' COLLEGE OFFERING TRAINING FOR
PRIMARY, INTERMEDIATE AND HIGH SCHOOL LICENSES.

COMMERCIAL AND PRE-PROFESSIONAL COURSES for Stenog-
raphers, Clerks, Secretaries, Pre-medicine, Pre-dental, Pre-law
and Pre-engineering are provided.

THE COLLEGE OF ECONOMY AND FRIENDSHIP. Many could not
attend College if they could not go to Central Normal College.
Students go two years for the cost of one in other colleges.

Liberal SCHOLARSHIPS are available for good students.

Write for information to:

CARL H. GRIFFEY, *President*

Danville, Indiana

THE CAMPUS DRUG STORE FOR CNC STUDENTS



THE CENTRAL RENDEZVOUS

Where the Students Meet With
Their Friends For

Dancing and "Good Clean Fun"

at

"THE CENTRAL RENDEZVOUS"
ABOVE THE STORE

Drugs :: Prescriptions :: Toiletries

Sandwiches :: Ice Cream

JAMES R. ALLEY, Registered Pharmacist

ELEANOR ALLEY

DANVILLE DRUG STORE

NEXT DOOR TO ROYAL THEATER EAST SIDE SQUARE

"You Are Always Welcome"

CHARTERED BUSSES

For All Occasions

PARTY COACHES OUR SPECIALTY

DE LUXE PARLOR COACHES

BEImont 5012

TONY'S SAFETY COACH
LINE

6215 West Washington St.

Compliments

of

PUBLIC SERVICE COMPANY

OF INDIANA

EXTENDING GREETINGS

TO THE CLASS OF 1939

AND TO STUDENTS AND FRIENDS OF

CENTRAL NORMAL COLLEGE

DANVILLE LIONS CLUB

The Members:

RAWLEIGH BAKER

A. G. BLAIR

E. M. BLESSING

C. Z. COOK

E. D. CRAWLEY

O. L. DAWSON

C. A. EDMONSON

CHESTER ELSON

DR. MOUNT FRANTZ

DR. CARL H. GRIFFEY

DR. J. H. GRIMES

OTIS L. GULLEY

L. G. VANNICE

N. E. WINFREY

F. BREWER HADLEY

ALVIN HALL

GEORGE HADLEY

JOHN KENDALL

ROBERT KING

C. R. LANDIS

J. C. LOGAN

REV. POWELL MEAD

J. R. PARRISH

E. J. ROBERTS

A. D. ROULT

GLEN THARPE

H. M. WHISLER

HAROLD YARLING

IDEAL SHOP

BARBERING

CLEANING & PRESSING

SHOE REPAIRING

Our Compliments to the Graduates

WM. WALTON

JESS PEARSON

Compliments of

THOMPSON DRUG COMPANY

The Rexall Store

N. Side Square

Danville, Indiana

Compliments of

REMBRANDT STUDIO

COLUMBUS, OHIO

DEE LEE STUDIO

ANDERSON, INDIANA

HERFF - JONES COMPANY

Designers and Manufacturers of

SCHOOL AND COLLEGE JEWELRY

GRADUATION ANNOUNCEMENTS

MEDALS, CUPS AND TROPHIES

INDIANAPOLIS, INDIANA

Jewelers to Central Normal College

AMERICAN BEAUTY SHOP

Where

Better

Served

DANVILLE

PHONE 211

MORRIS FLORAL COMPANY

We serve you with

FLOWERS

for any occasion or place

425 South Cross Street Danville, Indiana

DRINK



IN BOTTLES

TO
THOSE WHO ARE TO TEACH
GREGG SHORTHAND

There is available for your use in teaching Gregg Shorthand: (1) courses of study, (2) teacher's manuals, (3) methods books, (4) a wealth of supplementary text materials, and (5) the richest variety of basic textbooks yet devised for teaching a shorthand system. As a service to the teacher, there is no charge for courses of study, teacher's manuals, and the counsel of expert Gregg teachers.

You will find Gregg Shorthand (1) *easy to learn*, (2) *easy to write*, (3) *easy to read*, (4) *easy to teach*.

It is taught in more than 99 per cent of the public school systems of the United States that teach shorthand.

We are interested in your success, and invite you to write our nearest office for teaching counsel or for advice on teaching materials that will attain the particular objective that you wish to reach.

THE GREGG PUBLISHING COMPANY

NEW YORK • CHICAGO • SAN FRANCISCO • BOSTON

TORONTO • LONDON • SYDNEY

Compliments

of

PREWITT THEATRE

Plainfield, Indiana

SMITHCRAFT

SCHOOL STATIONERS

COLUMBUS JUNCTION, IOWA

A WORD TO
YOU WHO ARE RESPONSIBLE FOR THIS
1939 "CENTRALIAN" EDITION AND
ALL STUDENTS OF C. N. C.

Your responsibility and service to society is about to begin. May I ask of you to always give of your service in excess of any compensation you may receive. By so doing you will never become a burden to society, but will always have pleasant employment and social relations.

*Our future has been molded in the past, and whether
right or wrong we are the
dealer for*

DODGE — PLYMOUTH & DODGE TRUCKS

DEPENDABLE USED CARS & TRUCKS

LINCO GASOLINE

PENZOIL MOTOR OIL

E. J. ROBERTS GARAGE

38 N. Washington Street

DANVILLE, IND.

Phone 499

DANVILLE COMMERCIAL CLUB

To the Class of 1939

CONGRATULATIONS!

In felicitating the graduates of 1939, we wish you to know that one of the fundamental objects of the Commercial Club of Danville is to foster and create a spirit of generous consideration among the peoples of the town of Danville and the student body of Central Normal College.

We hope that through your association with us that you have realized a great benefit in the civic and social association with the business men and townspeople. By your active interest in your school work you are realizing a successful ambition accomplished and may the joy of this accomplishment carry you out of "school life" into "life's school", and if the friendships you have formed here will inspire you to take an active interest in the civic, commercial, social and moral life of the community in which you go we will be truly glad.

May your chosen work bring happiness and success to all of you. In the years yet to come you will look back on your days at Central Normal College with fond memories—memories that will bring you back to Danville. You will find a welcome here always.

Compliments of

PARR'S VARIETY STORE

Corner of Main and Jefferson

DANVILLE, INDIANA

Compliments of

DANVILLE BUS LINE

DANVILLE, INDIANA

CITY RESTAURANT

Where Better Foods Are Served

Compliments of

J. C. LOGAN

Mobilgas Service Station

145 East Main Street

Compliments of

THE GAZETTE

DANVILLE, INDIANA

Compliments of

HOMER L. COOK TEACHER
AGENCY

325 Circle Tower

INDIANAPOLIS, INDIANA



Beauty Begins
*at the Top of
Your Head*

For true, natural beauty
in leader styling make
your appointments at
the

DANVILLE BEAUTY SHOP
M. THOMPSON

Compliments
of
ROYAL THEATRE
Danville, Indiana

VANNICE FARMS

PURE
JERSEY
MILK
Pasteurized

PHONE 14

CONGRATULATIONS
TO THE CLASS OF 1939

and
WE WISH TO THANK THE STUDENTS
OF CENTRAL NORMAL COLLEGE FOR
THEIR PATRONAGE AND FRIENDSHIP
FOR THE PAST YEARS AND EXTEND A
HEARTY WELCOME ALWAYS.

The
HOUSE OF HADLEY
North Side Square

RUTH WADE
CHARLES CLARK

C. H. "HAP" BEVER
FRANK BREWER HADLEY



PLANT
Noblesville,
Indiana

INDIANAPOLIS
OFFICE
Fairfield at College

Compliments of

THE HUDLER PRESS

PRINTERS
PUBLISHERS
ARTISTS

THE COMMANDERS

Modern Music

For Modern Occasions

1524 East Tabor St. Indianapolis, Ind.

Elmer J. Spieker, Director

DINE AND DANCE

Super quality foods

Home made ice cream

Open All Night

FRENCH'S CAFE

Plainfield, Indiana

**THE E. C. WARD
COMPANY**

NEW LONDON, OHIO

Manufacturers

of

Caps and Gowns

Church Vestments

School and College Band

Uniforms

The

S. K. SMITH COMPANY

MALLOY MADE

Yearbook Covers

CHICAGO, ILLINOIS

Compliments of

THE REPUBLICAN

Hendricks County's

Leading

Paper

QUALITY BAKED GOODS

Reasonably Priced

GOODWIN'S BAKERY

Phone 71

A Wonderful Product

BALLARD ICE CREAM

and

ESKIMO PIE

Ballard Ice Cream Company
Indianapolis, Indiana

Compliments of
STILLWELL CAFETERIA
RALPH E. STILLWELL
Proprietor

TAYLOR, TAYLOR, AND
TAYLOR
ABSTRACTORS
and
ATTORNEYS

Compliments of
HOUSMAN'S RESTAURANT
and
MEAT MARKET

D. F. ROBERTS
Funeral Director
Ambulance Service
Phone 88 Residence 76

DINSMORE'S MARKET
Quality Service Store
THE HOME OF BARGAINS

Compliments of
PARRISH DRUG STORE

FARMERS SUPPLY COMPANY
DEPENDABLE HARDWARE
Service Dealers for
FARM MACHINERY
Glen Tharp, Prop. A. M. Biehl, Mgr.

CLINE CLEANERS
CLEANING PRESSING ALTERING
TAILOR MADE SUITS
East Side of □ Phone 519-L
Reese Cline, Prop.

Compliments of

MOUNT E. FRANTZ
R. H. KING

A. G. BARRETT
J. W. GIBBS

OTIS E. GULLEY
ATTORNEY

HUME AND GASTON
ATTORNEYS



☆ BEST WISHES
from

HARRY
FISHER

AND HIS ORCHESTRA

Personal Management

Danville, Ind.

Phone 450

CONCLUSION

ANOTHER year has passed and another Central Normal Yearbook is completed. We now put the cover back on our typewriter and start sleeping again. We have made many friends, worked many hours, and learned many things, but in all we have enjoyed the work.

Now may we say that we are sorry it is so near over but yet we hope that you will enjoy reading it as much as we enjoyed making it for you.

Editor

ACKNOWLEDGMENTS

Engraving by
CIRCLE ENGRAVING COMPANY
Indianapolis, Indiana

Printing by
PREMIER PRINTING CORPORATION
Indianapolis, Indiana

Photographs by
REMBRANDT STUDIO
Columbus, Ohio

RAMOS PORTER
Indianapolis, Indiana

McLEAN STUDIO
Danville, Indiana

HOLLAND STUDIO
Indianapolis, Indiana

