



FRONT ELEVATION



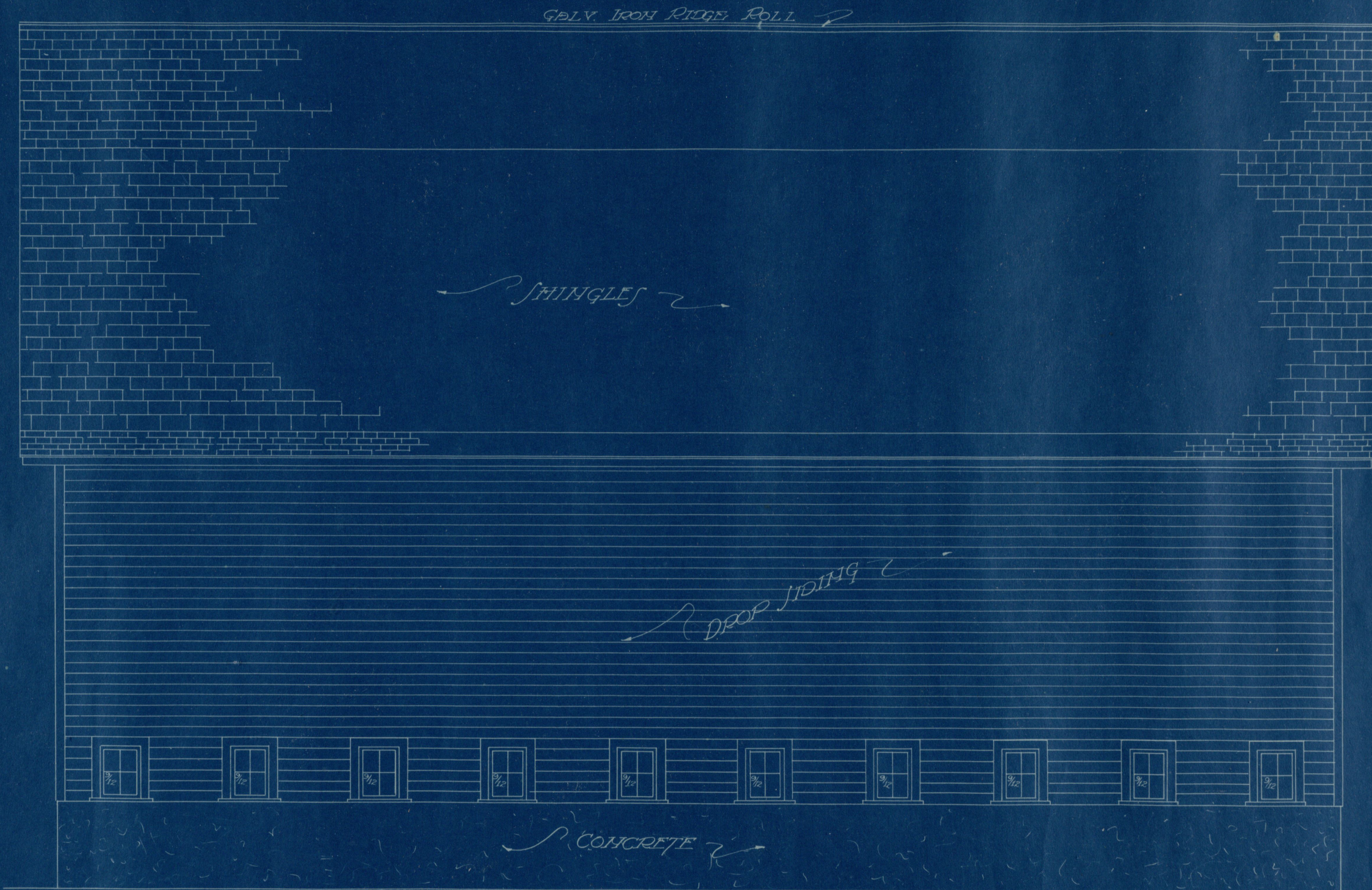
REAR ELEVATION
SIDE 4'-10"



FRONT ELEVATION

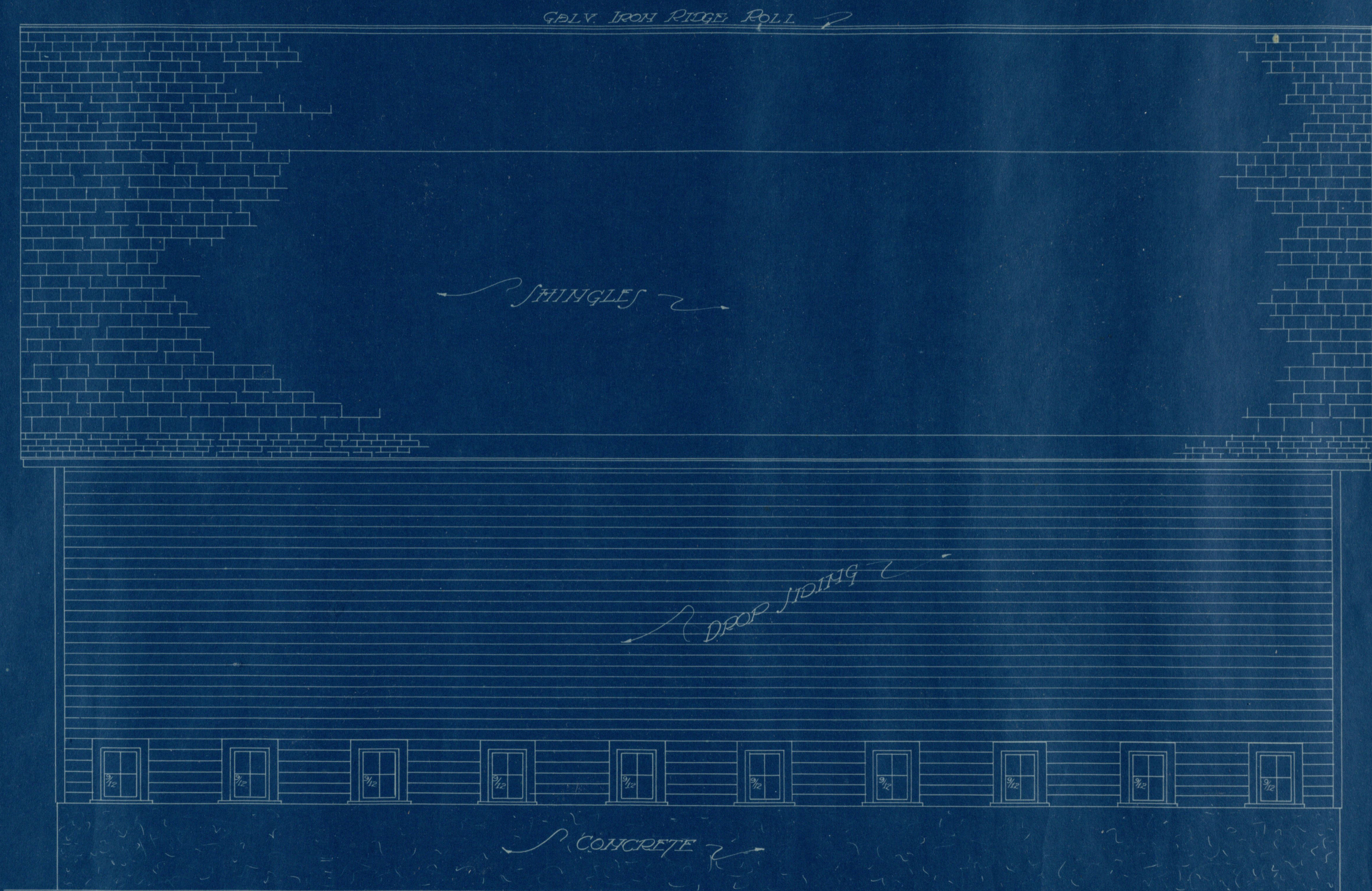


REAR ELEVATION
SCALE 1/4" = 1'-0"



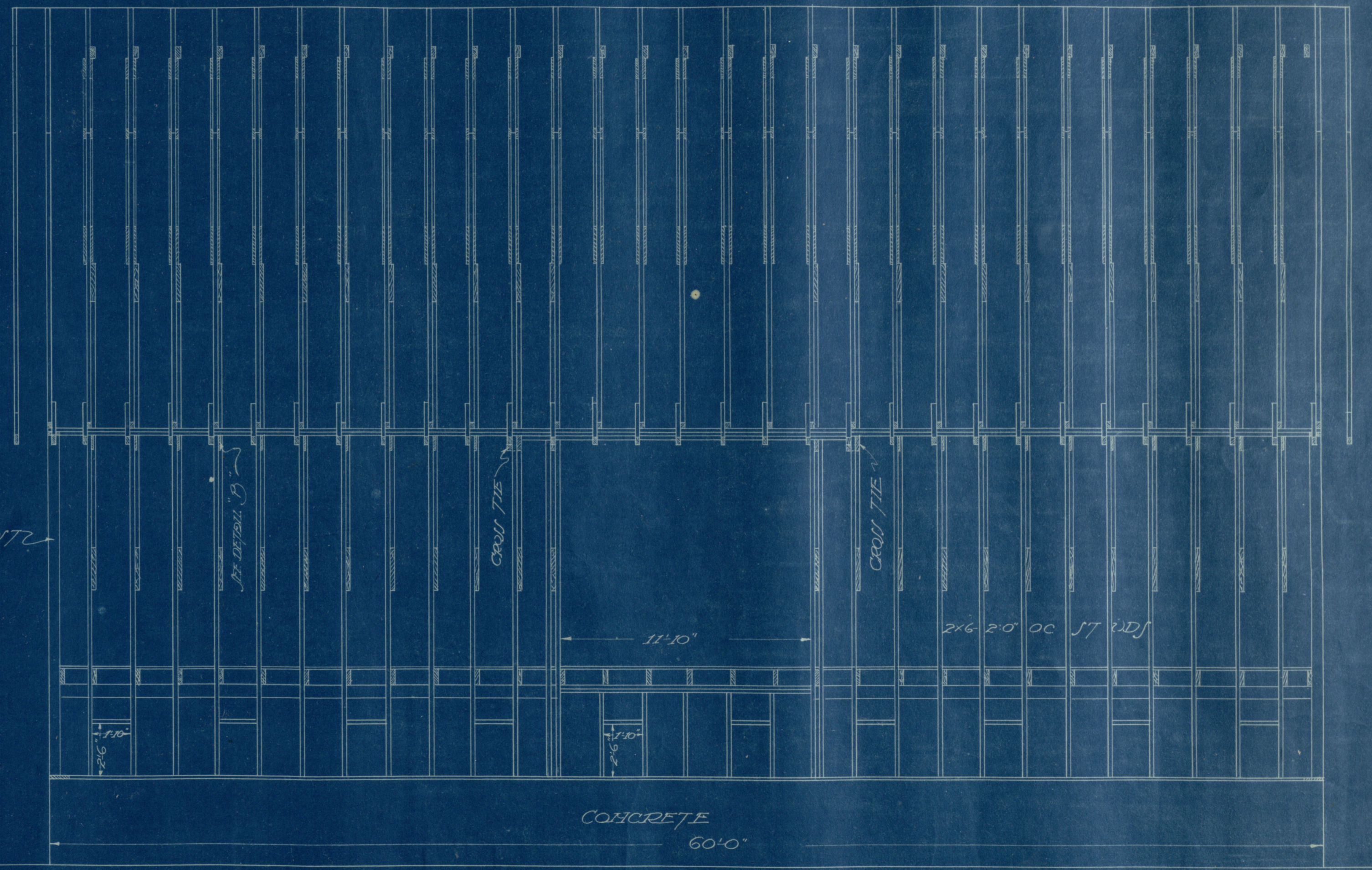
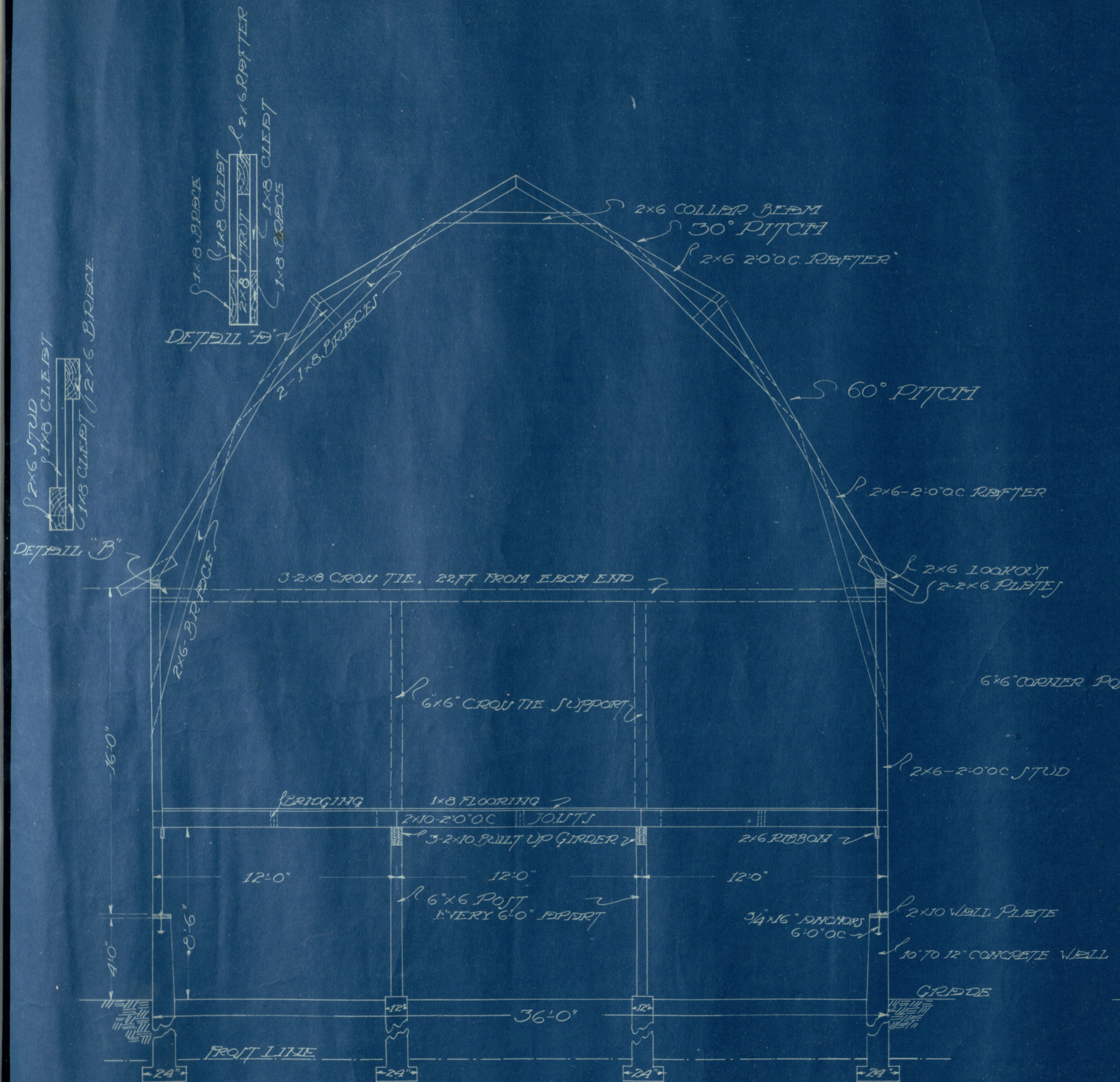
LEFT SIDE ELEVATION
SCALE 1/4" = 1'-0"

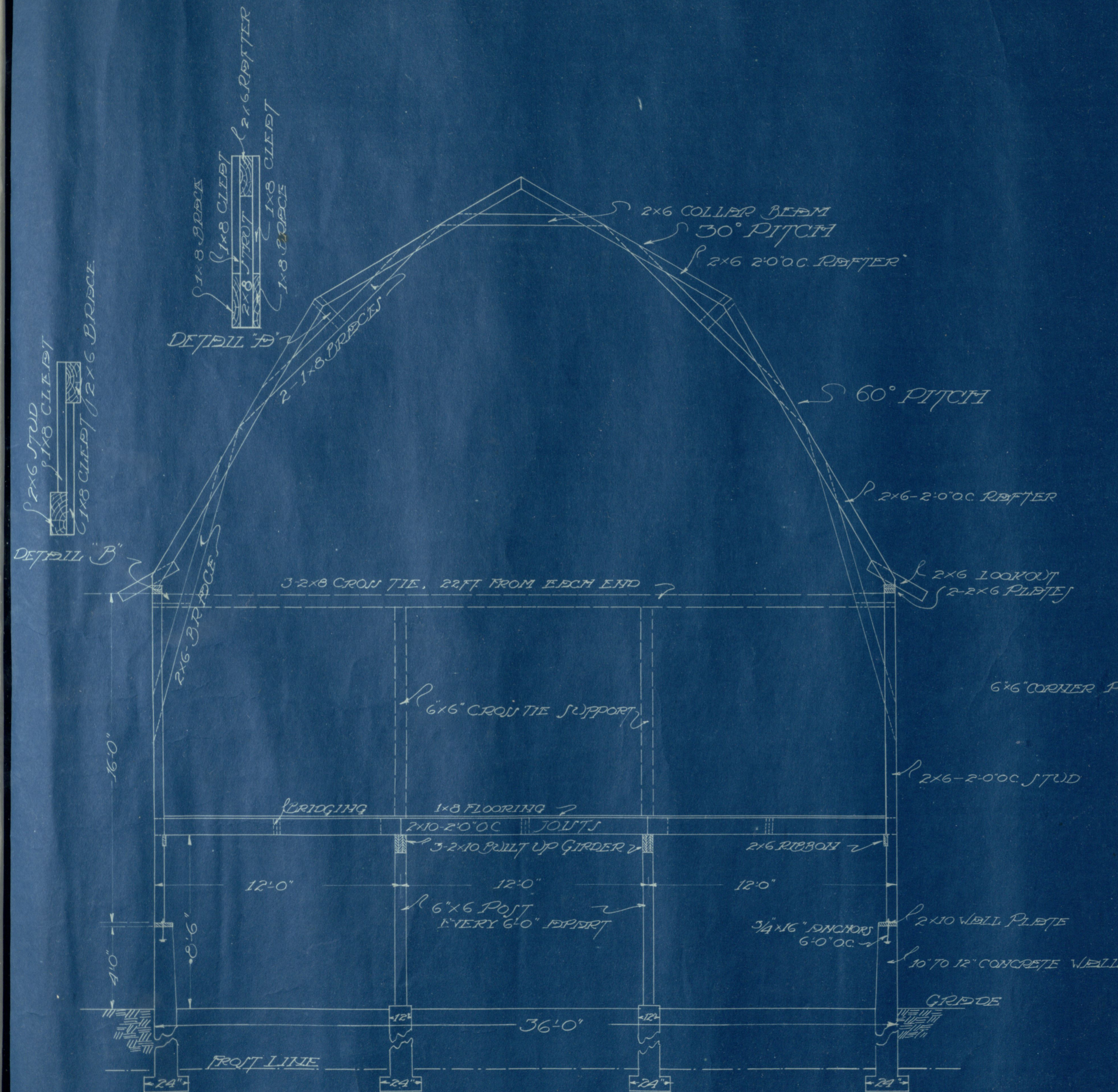
LENGTH 60'-0"



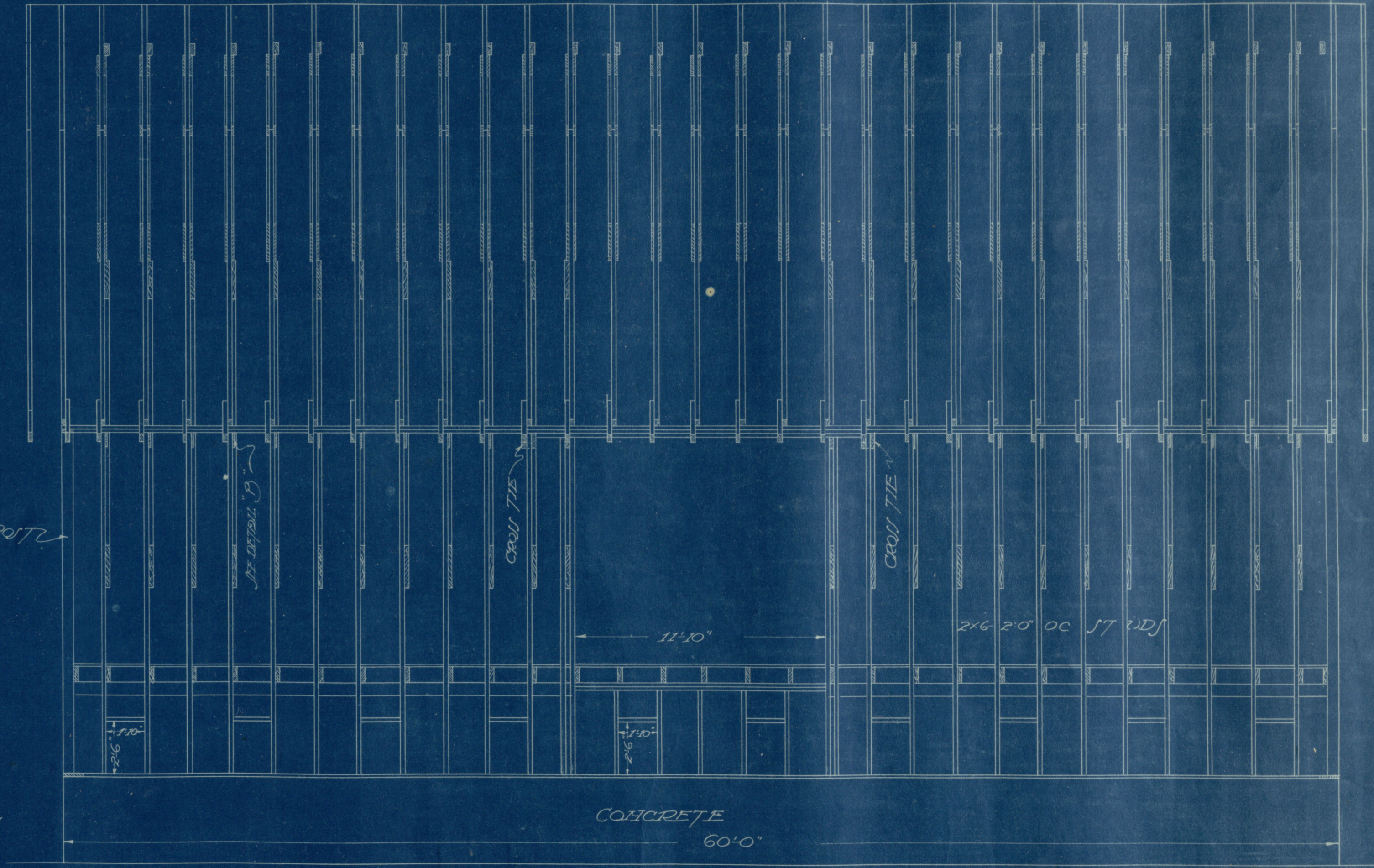
LEFT SIDE ELEVATION
SCALE 1/4" = 1'-0"

LENGTH 60'-0"





SECTION
SCALE 1/4" = 1'-0"



RIGHT SIDE FRAME
SCALE 1/4" = 1'-0"