

32-15-2E
6-14-2E

HEND. COUNTY

#HC.DAT - Adjustment of a traverse in Sections 6-14-2E and 32-15-2E in the #matter of Hendricks County's implementation of the Perpetual Corner #Records Act of 1965, as amended:

C	1	5335	8970		
C	5	2943.56085	7847.91866	!	!
C	7	5668.96949	9230.07203	!	!
D	1-5		2645.560		
TB	5				
T	1	153-49-33.3	300.590		
T	6	263-32-39.8	258.451		
TE	7				
SS	1-5-2	242-42-04.0	3009.321		

STAR*NET Adjustment Program
 Copyright 1991 STARPLUS SOFTWARE, INC.
 Licensed for Use by Shartle Engineering
 Serial Number 10270

STAR*NET V4.065
 Run Date : Mon Oct 18 07:27:04 1993

Default Standard Error for Distances : 0.01600
 Default Standard Error for Angles : 2.800
 Default Standard Error for Directions : 2.800
 Default Standard Error for Az/Bearings : 2.800
 Centering Error for Instrument : 0.0030
 Centering Error for Target : 0.0050
 EDM Parts Per Million : 3.0000

Number of Observations = 5
 Number of Unknowns = 4
 Degrees of Freedom = 1

Data Type	Count	Weighted Residuals	Error Factor
Distances	3	0.68	1.06
Angles	2	0.05	0.36
Directions	0	0.00	0.00
Az/Bearings	0	0.00	0.00
Stations	4	0.00	0.00

Total 9 0.73 0.86
 Adjustment passes the Chi Square test at 5% level

Adjusted Angle Observations

At	From	To	Adj Angle	Residual	StdErr	StdRes
1	5	6	153-49-33.58	0-00-00.28	4.99	0.1
6	1	7	263-32-41.29	0-00-01.49	6.72	0.2

Adjusted Distance Observations [US Feet]

At	To	Adj Dist	Residual	StdErr	StdRes
1	5	2645.5488	-0.0112	0.019	0.6
1	6	300.5818	-0.0082	0.017	0.5
6	7	258.4458	-0.0052	0.017	0.3

Adjusted Bearings and Horizontal Distances

From	To	Bearing	Distance
1	5	S25-17-45.48W	2645.5488
1	6	N00-52-40.94W	300.5818
6	7	N82-40-00.34E	258.4458

Horizontal Traverse Closures of Unadjusted Observations
 (Beginning and Ending on ADJUSTED Stations)

Begin at 1, Backsight Bearing to 5 = S25-17-45.48W

From	To	Unadj Bearing	Unadj Dist
1	6	N00-52-41.22W	300.5900
6	7	N82-39-58.58E	258.4510

Horizontal Precision 1:47151 559.0410 T
 Misclosures 0.011 N 0.0043 E

Elapsed time = 00:00:01

ADJUSTED COORDINATES:

1	5335.43495	8978.34631
2	5440.61219	11985.82875
5	2943.56085	7847.91866
6	5635.98147	8973.74017
7	5668.96949	9230.07203

**** COORDINATE FILE SYSTEM ****

FILE CREATED:

COORDINATE FILE:3252EA LENGTH= 72 POINTS; TIME ON FILE: 0 00 00.00
HEND. CO. COR. STONES ***** JOB #1993

COORDINATE FILE:3252EA LENGTH = 72 POINTS; TIME ON FILE: 0 00 00.00
HEND. CO. COR. STONES ***** JOB #1993

***** COGO *****

FROM TYPE BEARING DISTANCE TO NORTHING EASTING

ENTER & ASSIGN

1 5,335.43495 8,978.34631
2 5,440.61219 11,985.82875
5 2,943.56085 7,847.91866
6 5,635.98147 8,973.74017
7 5,668.96949 9,230.07203

START

2 TRAV NW 1 53 43.52 294.60000 3 5,735.05100 11,985.82875

START

9 INV NE 89 05 41.40 2668.43433 7 5,668.96949 9,230.07203

7 TRAV NE 89 05 41.40 75.24000 10 5,670.15809 9,305.30264

10 INV NE 6 58 11.03 0.99146 11 5,671.14223 9,305.42295

11 INV SW 6 58 11.03 0.99146 10 5,670.15809 9,305.30264

ENTER & ASSIGN

11 5,671.14223 9,305.42295

START

11 INV SW 6 58 11.03 0.99146 10 5,670.15809 9,305.42295

10 INV NE 88 36 29.30 2671.57036 3 5,735.05100 11,976.08475

3 TRAV SW 88 36 29.30 82.50000 12 5,733.04706 11,893.60909

12 INV SW ~~88 37 18.78~~ 2664.30772 7 5,668.96949 9,230.07203

LIST

*2746.80772
2735.7' by Job
Hadley*

1 5,335.43495 8,978.34631
2 5,440.61219 11,985.82875
3 5,735.05100 11,976.08475
5 2,943.56085 7,847.91866
6 5,635.98147 8,973.74017
7 5,668.96949 9,230.07203
9 5,626.81492 6,561.97069
10 5,670.15809 9,305.30264
11 5,671.14223 9,305.42295
12 5,733.04706 11,893.60909

TIME FOR THIS RUN: 0 24 17.65; TOTAL TIME ON FILE: 0 24 17.65
COORDINATES STORED

COORDINATE FILE:3252EA LENGTH = 72 POINTS; TIME ON FILE: 0 24 17.65
HEND. CO. COR. STONES ***** JOB #1993

***** COGO *****

FROM TYPE	BEARING	DISTANCE	TO	NORTHING	EASTING
START			2	5,440.61219	11,985.82875
2 S.S. NW	0 12 56.02	2900.00000	4	8,340.59167	11,974.91819
2 TRAV NW	0 27 17.02	2943.34800	8	8,383.86749	11,962.46906
8 S.S. SE	0 17 40.25	2648.85148	3	5,735.05100	11,976.08475
8 S.S. SW	54 58 31.44	14607.87117	13	0.00000	0.00000
8 S.S. SW	89 11 24.98	2662.80600	13	8,346.23681	9,299.92897
8 TRAV NW	0 33 42.02	4664.47600	26	13,048.11937	11,916.74370
26 S.S. NW	38 23 16.72	4231.97300	27	16,365.24036	9,288.75896
26 TRAV NW	61 50 49.52	3015.03000	28	14,470.68976	9,258.41728
START			13	8,346.23681	9,299.92897
13 S.S. NW	0 28 38.52	3175.15300	20	11,521.27960	9,273.47504
13 S.S. NW	0 02 02.02	3689.44400	21	12,035.68016	9,297.74633
13 S.S. NW	0 00 43.52	5258.76100	25	13,604.99769	9,298.81931
13 TRAV NW	0 02 57.52	5385.12500	24	13,731.35981	9,295.29420
OFFSETS FROM A LINE			13	8,346.23681	9,299.92897
BASE BRG NW	0 23 18.05				
PT	BASE DIST	OFFSET			
20	3175.14917	-4.93330			
21	3689.37340	22.82397			
25	5258.64761	34.53356			
24	5385.03072	31.86499			
27	8018.89506	43.18200			
28	6124.59364	0.00000			
START			6	5,635.98147	8,973.74017
6 TRAV NA	0 00 00.00	0.00000	0	5,635.98147	8,973.74017
START			6	5,635.98147	8,973.74017
6 INV NA	82 40 00.34	258.44580	7	5,668.96949	9,230.07203
7 INV NA	89 05 41.40	75.24000	10	5,670.15809	9,305.30264
10 INV NA	264 06 53.57	333.31924	6	5,635.98147	8,973.74017
6 INV NA	84 06 53.57	333.31924	10	5,670.15809	9,305.30264
10 INV NA	269 05 41.40	75.24000	7	5,668.96949	9,230.07203
7 INV NA	262 40 00.34	258.44580	6	5,635.98147	8,973.74017
START			3	5,735.05100	11,976.08475
3 S.S. NA	178 06 16.48	294.60000	2	5,440.61219	11,985.82875
3 INV NA	268 36 29.30	82.50000	12	5,733.04706	11,893.60909
START			10	5,670.15809	9,305.30264
10 INV NA	359 53 05.81	2676.08411	13	8,346.23681	9,299.92897
TIME FOR THIS RUN:	0 21 36.27;	TOTAL TIME ON FILE:	0 45 53.92		
COORDINATES STORED					

COORDINATE FILE:3252EA LENGTH = 72 POINTS; TIME ON FILE: 0 45 53.92
HEND. CO. COR. STONES ***** JOB #1993

***** COGO *****

FROM TYPE	BEARING	DISTANCE	TO	NORTHING	EASTING
START			27	16,365.24036	9,288.75896
27 TRAV SW	89 11 37.28	50.89500	17	16,364.52415	9,237.86900
START			25	13,604.99769	9,298.81931
25 INV NW	1 35 52.66	126.41128	24	13,731.35981	9,295.29420
24 TRAV SW	42 38 30.34	50.39400	18	13,694.28981	9,261.15668
START			21	12,035.68016	9,297.74633
21 TRAV SW	55 00 26.98	30.54100	22	12,018.16584	9,272.72632
OFFSETS FROM A LINE			13	8,346.23681	9,299.92897
BASE BRG NW	0 24 55.35				
PT	BASE DIST	OFFSET			
20	3175.15114	-3.43543			
22	3672.02974	-0.58190			
START			13	8,346.23681	9,299.92897
13 TRAV NW	0 24 55.35	2674.09677	19	11,020.26331	9,280.54283
19 INV NW	0 24 55.35	2674.09677	18	13,694.28981	9,261.15668
18 INV NW	0 29 58.83	2670.33589	17	16,364.52415	9,237.86900
OFFSETS FROM A LINE			18	13,694.28981	9,261.15668
BASE BRG NW	0 29 58.83				
PT	BASE DIST	OFFSET			
28	776.39432	4.03159			
17	2670.33589	0.00000			
OFFSETS FROM A LINE			19	11,020.26331	9,280.54283
BASE BRG NW	0 24 55.35				
PT	BASE DIST	OFFSET			
20	501.05437	-3.43543			
22	997.93297	-0.58190			
18	2674.09677	0.00000			
START			22	12,018.16584	9,272.72632
LET LINE FROM 18 PASS THRU THE MEAN OF 22 AND 20:					
LINE TANGENT TO CIRCLES					
			18	13,694.28981	9,261.15668
RADIUS =	0.000		22	12,018.16584	9,272.72632
RADIUS =	.950				
TANGENT PTS (2nd,1st)					
			31	12,018.15982	9,271.77634
OFFSETS FROM A LINE			18	13,694.28981	9,261.15668
BASE BRG SE	0 21 46.84				
PT	BASE DIST	OFFSET			
22	1676.16363	-0.95000			
20	2173.04464	1.44941			
START			20	11,521.27960	9,273.47504
20 TRAV NW	0 05 10.81	248.44340	0	11,769.72272	9,273.10068
0 INV NW	0 21 20.08	1924.60415	18	13,694.28981	9,261.15668
OFFSETS FROM A LINE			18	13,694.28981	9,261.15668

BASE BRG SE 0 21 20.08

PT BASE DIST OFFSET

22 1676.16350 -1.16745

20 2173.04481 1.16750

START							
	18	TRAV SE	0 20 20.08	1676.16350	18	13,694.28981	9,261.15668
	31	TRAV SE	0 20 20.08	496.88680*	31	12,018.15563	9,271.07133
	32	TRAV SE	0 20 20.08	496.88680*	32	11,521.27753	9,274.01045
	19	TRAV SE	0 20 20.08	496.88680*	19	11,024.39943	9,276.94958
	13	INV SE	0 29 29.77	2678.26120	13	8,346.23681	9,299.92897
	19	INV NW	0 29 29.77	2678.26120	19	11,024.39943	9,276.94958
	19	INV NW	0 20 20.08	2669.93709	18	13,694.28981	9,261.15668
	18	INV NW	0 29 58.83	2670.33589	17	16,364.52415	9,237.86900
START	10	INV NW	0 06 54.19	2676.08411	10	5,670.15809	9,305.30264
START	13	TRAV NA	0 00 00.00	0.00000	13	8,346.23681	9,299.92897
START	13	S.S. NA	89 11 24.98	2662.80600	8	8,383.86749	11,962.46906
	13	INV NA	359 30 30.23	2678.26120	19	11,024.39943	9,276.94958

LIST

1	5,335.43495	8,978.34631
2	5,440.61219	11,985.82875
3	5,735.05100	11,976.08475
4	8,340.59167	11,974.91819
5	2,943.56085	7,847.91866
6	5,635.98147	8,973.74017
7	5,668.96949	9,230.07203
8	8,383.86749	11,962.46906
9	5,626.81492	6,561.97069
10	5,670.15809	9,305.30264
11	5,671.14223	9,305.42295
12	5,733.04706	11,893.60909
13	8,346.23681	9,299.92897
17	16,364.52415	9,237.86900
18	13,694.28981	9,261.15668
19	11,024.39943	9,276.94958
20	11,521.27960	9,273.47504
21	12,035.68016	9,297.74633
22	12,018.16584	9,272.72632
24	13,731.35981	9,295.29420
25	13,604.99769	9,298.81931
26	13,048.11937	11,916.74370
27	16,365.24036	9,288.75896
28	14,470.68976	9,258.41728
31	12,018.15563	9,271.07133
32	11,521.27753	9,274.01045

* 30 node = 495' by dead

$$\frac{496.88680}{495'} = 1.00381172 = \text{a reasonable}$$

claiming calibration factor. USE.

TIME FOR THIS RUN: 0 51 36.67; TOTAL TIME ON FILE: 1 37 30.58
COORDINATES STORED

COORDINATE FILE:3252EA LENGTH = 72 POINTS; TIME ON FILE: 1 37 30.58
HEND. CO. COR. STONES ***** JOB #1993

***** COGO *****

FROM	TYPE	BEARING	DISTANCE	TO	NORTHING	EASTING
START				27	16,365.24036	9,288.75896
27	S.S. NW	65 19 51.72	154.42000	29	16,429.69139	9,148.43220
27	TRAV NW	70 58 00.72	119.22000	30	16,404.11977	9,176.05670
30	INV SE	57 21 26.11	73.40691	17	16,364.52415	9,237.86900
17	INV NW	53 55 17.10	110.66034	29	16,429.69139	9,148.43220
START				19	11,024.39943	9,276.94958
START				8	8,383.86749	11,962.46906
8	TRAV NW	0 25 07.52	2672.04400	14	11,055.84013	11,942.94011
14	INV SW	89 19 27.58	2666.17592	19	11,024.39943	9,276.94958
START				8	8,383.86749	11,962.46906
8	INV SE	0 17 40.25	2648.85148	3	5,735.05100	11,976.08475
3	D-D NW	52 42 25.78	88.90000	0	5,788.91453	11,905.36043
0	D-D SW	11 52 42.97	57.09000	12	5,733.04706	11,893.60909
START				2	5,440.61219	11,985.82875
2	INV NW	17 30 09.81	306.63108	12	5,733.04706	11,893.60909

TIME FOR THIS RUN: 0 15 56.77; TOTAL TIME ON FILE: 1 53 27.35
COORDINATES STORED

COORDINATE FILE:3252EA LENGTH = 72 POINTS; TIME ON FILE: 1 53 27.35
HEND. CO. COR. STONES ***** JOB #1993

***** COGO *****

FROM TYPE BEARING DISTANCE TO NORTHING EASTING

PT-PT ANGLES

ANG 19 - 13 - 8 : C.W. 89 40 54.74 C.C.W. 270 19 05.26 2662.80600
ANG 13 - 8 - 14 : C.W. 90 23 27.50 C.C.W. 269 36 32.50 2672.04400
ANG 8 - 14 - 19 : C.W. 89 44 35.10 C.C.W. 270 15 24.90 2666.17592
ANG 14 - 19 - 13 : C.W. 90 11 02.65 C.C.W. 269 48 57.35 2678.26120

PT-PT ANGLES

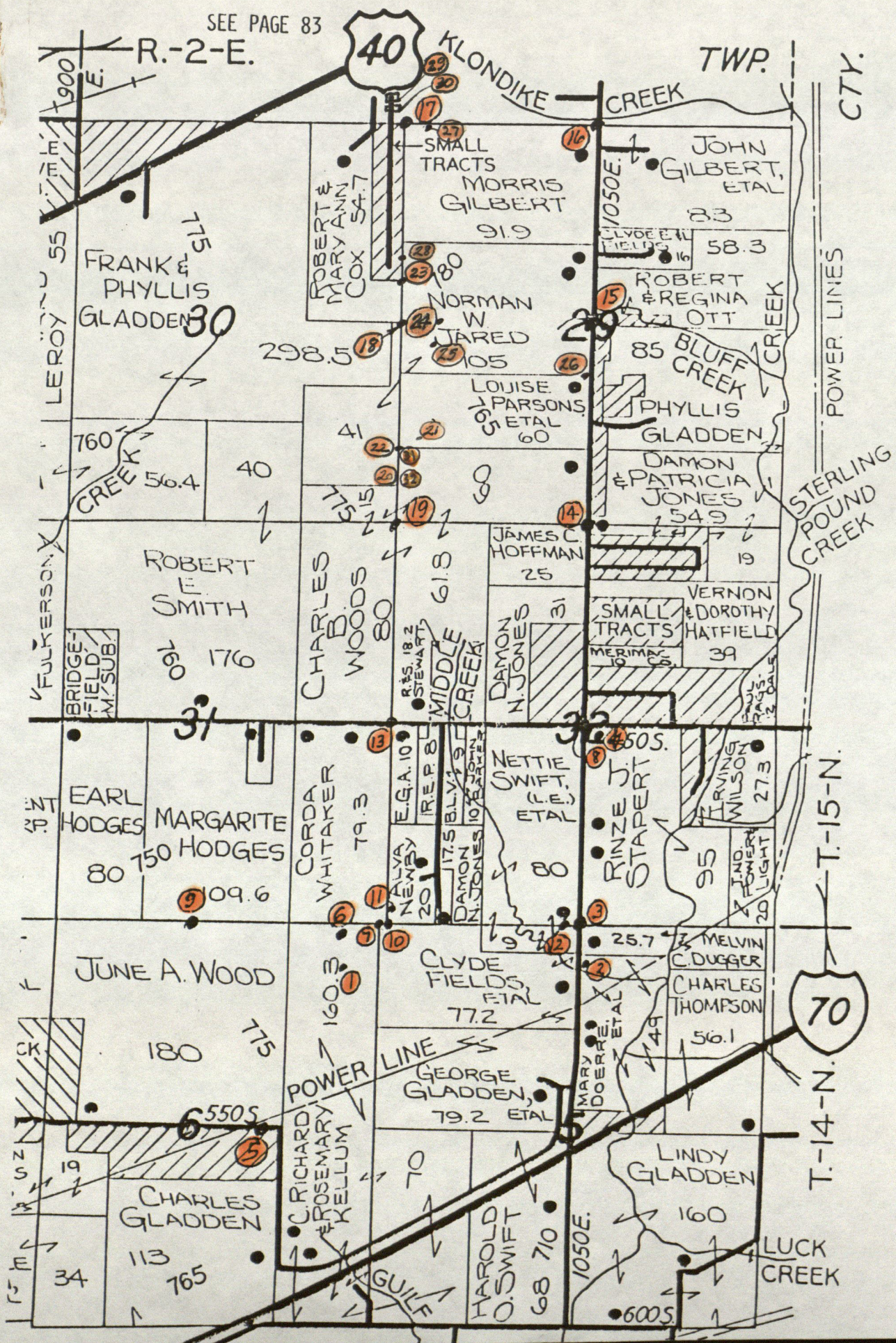
ANG 10 - 13 - 19 : C.W. 179 37 24.42 C.C.W. 180 22 35.58 2678.26120
ANG 13 - 19 - 18 : C.W. 180 09 09.69 C.C.W. 179 50 50.31 2669.93709
ANG 19 - 18 - 17 : C.W. 179 50 21.25 C.C.W. 180 09 38.75 2670.33589

TIME FOR THIS RUN: 0 03 28.22; TOTAL TIME ON FILE: 1 56 55.57

COORDINATES STORED

1" = 100 rods

SEE PAGE 83



R-2-E.

40

KLONGDIKE CREEK

TWP.

CTY.

LEROY 55

FRANK & PHYLLIS GLADDEN 30

ROBERT & MARY ANN COX 54.7

SMALL TRACTS MORRIS GILBERT 91.9

JOHN GILBERT, ETAL 83

CLYDE FIELDS 58.3

ROBERT & REGINA OTT 27.1

NORMAN W. JARED 105

LOUISE PARSONS ETAL 60

85 BLUFF CREEK PHYLLIS GLADDEN

760 CREEK 56.4

CHARLES WOODS 80

JAMES C. HOFFMAN 25

DAMON & PATRICIA JONES 54.9

ROBERT F. SMITH 176

CHARLES WOODS 80

DAMON N. JONES 31

SMALL TRACTS VERNON & DOROTHY HATFIELD 39

EARL HODGES MARGARITE HODGES 80 175 109.6

CORDA WHITAKER 79.3

NETTIE SWIFT, (L.E.) ETAL 80

RINZE J. STAPERT 450.5

JUNE A. WOOD 180 175

C. RICHARD & ROSEMARY KELLUM 70

CLYDE FIELDS, ETAL 77.2

MELVIN C. DUGGER CHARLES THOMPSON 56.1

CHARLES GLADDEN 113 165

HAROLD O. SWIFT 68 710

GEORGE GLADDEN, ETAL 79.2

LINDY GLADDEN 160

LUCK CREEK

70

T-14-N. T-15-N.

POWER LINES

STERLING POUND CREEK

BRIDGE-FIELD M. SUB.

MIDDLE CREEK

GUILF

1050E.

1050E.

MARY DOERRE ETAL

IRVING WILSON 27.3

IRVING WILSON 27.3

IRVING WILSON 27.3

IRVING WILSON 27.3

IRVING WILSON 27.3

IRVING WILSON 27.3

IRVING WILSON 27.3

IRVING WILSON 27.3

IRVING WILSON 27.3

IRVING WILSON 27.3

JOB Hendricks County Corner Stones
near Airport

DESCRIPTIONS OF POINTS

- 1 Temp. point in field
- 2 " " on E. side C.R. 1050E.
- 3 $S\frac{1}{2}$ mi. Stone 32-15-2E
- 4 R.O. on stop sign SE cor. C.R. 1050E & C.R. 450S.
- 5 PK nail in C.R. 550 S (point 19 of Denison's Airway survey)
- 6 R.R. spk. in field (point 14 of Denison's Airway survey)
- 7 NE cor. 6-14-2E, stone found (point 64 of Airway survey)
- 8 stone at Cen. Sec. 32-15-2E - drilled shallow hole.
- 9 $N\frac{1}{2}$ mi. 6-14-2E (unmarked) - computed position in Airway survey
- 10 Computed position of SW cor. 32-15-2E
- 11 I.P. found on S. side wood cor. post $N7^{\circ}E$ 0.99' from 10
- 12 Computed position of N. $\frac{1}{4}$ cor. 5-14-2E
- 13 W $\frac{1}{4}$ cor. 32-15-2E - stone found 1992
- 14 N $\frac{1}{4}$ " " " " - " " 1993
- 15 Center Sec. 29-15-2E - " " "
- 16 N $\frac{1}{4}$ cor " " " " - " " "
- 17 NW " " " " - " " " - drilled hole
- 18 W $\frac{1}{4}$ " " " " - old 9x11" stone found 7" deep; replaced with conc. moil.
- 19 SW " " " " - calc. position " "
- 20 fence corner
- 21 Temp. point on Parsons farm
- 22 probable position of old wood corner post (before destruction)
- 23 SE cor. of Cox farm as occupied; evidence too poor to use.
- 24 Temp. point just eastward of 18
- 25 " " " S of 24
- 26 " " 0.1 mile S of Cen. Sec. 20 on W. side of road
- 27 " " E. of NW cor. 20-15-2E
- 28 5' S. of old wood cor. post for NE cor. southernmost 100' lot in unworked plat
- 29 SE cor. weatherboard of frame garage.
- 30 " " of frame garage under const.
- 31 Calc. position of prop. cor.
- 32 " " " " "

Chester A. Parsons, PE

Stanley M. Shartle, PE LS

PARSONS & SHARTLE ENGINEERS, INC.

Job Hend. Co. Stone Quarry Date Oct 14, 93 Hg. 29.3 Temp. 60° F. ppm+6

POINT	DIRECTION	OBSERVED HORIZ. DISTANCE	MEAN DISTANCE
1	0° 00' 00"	3009.325 .315 .320 .325	3009.325
3	90° 06' 26"	294.600 .600 .600 .600 .600	
4	0° 25' 47" 90° 06' 27.0"		
P.O. 4	91 47 11	STOP T center of stem at bottom	
4	7 08 58		
	91 47 14.5		
5	0° 00' 00"	2145.550 .560 .565 .565	
2	242° 42' 04"	3009.380 .320 .325 .320	
4	1250° 48' 16." 242° 42' 04"		
6	153° 49' 52"	300.590 .590 .595 .590	
	255° 18' 13" 153° 49' 33.3		
1	0° 00' 00"	300.590 .590 .590 .590	
7	263° 32' 43"	258.450 .450 .455 .450	
4	1234° 16' 39" 263° 32' 39.8"		
4	0° 00' 00"	R.O.	
8	359° 45' 41"	2943.340 .360 .360 .350 .350	2943.352
4	1359° 02' 34" 359° 45' 39"		

2
P.O.
70
29.2
ppm+12

6
10/22/93
170°
H29145
ppm+10
2

359-02
2943.348

Chester A. Parsons, PE

Stanley M. Shartle, PE LS

PARSONS & SHARTLE ENGINEERS, INC.

Job Head. Chi. Stone Quarry Date Oct 14, 93 Hg. 29.3 Temp. 60° F. ppm + 6

POINT	DIRECTION	OBSERVED HORIZ. DISTANCE	MEAN DISTANCE
1	0° 00' 00"	3009.325 .315 .320 .325	3009.321 3009.321
3	90° 06' 26"	294.600 .600 .600 .600 .600	294.600
4	0° 25' 47" 90° 06' 27.0"		
4	91 47 11	STOP center of stem at bottom	
4	7 08 58		
	91 47 14.5		
5	0° 00' 00"	2645.550 .560 .565 .565	2645.560
2	242° 42' 04"	3009.320 .320 .325 .320	3009.321 3009.321
4	250° 48' 16" 242° 42' 04"		
6	153° 49' 32" 255° 18' 13" 153° 49' 33.3"	300.590 .590 .595 .590	300.591 300.590
1	0° 00' 00"	300.590 .590 .590 .590	300.590 300.590
7	263° 32' 43"	258.450 .450 .455 .450	258.451
4	234° 16' 39" 263° 32' 39.8"		

2
P.O.

70
29.2
ppm + 12

1

6

Chester A. Parsons, PE

Stanley M. Shartle, PE LS

PARSONS & SHARTLE ENGINEERS, INC.

Job Hend Co. CORNER Stone

Date 10/25/93 Hg. 29.2 Temp. 60 F. ppm 16

POINT	DIRECTION	OBSERVED HORIZ. DISTANCE	MEAN DISTANCE
8	0°00'00"	2662.830 .830 .820 .815 .810	2662.821
20	270°19'55"	3175.170 .150 .145 .145	3175.153
	2/180°39'53" 270°19'56.5"		
21	270°46'38"	3689.450 .440 .440 .445	3689.444
	4/3°06'12" 270°46'33.0"		
24	270°45'34"	5385.130 .130 .120 .120	5385.125
	4/3°02'30" 270°45'37.5"		
25	270°47'50"	5258.765 .765 .740 .775	5258.761
	1/3°11'26" 270°47'51.5"		
2	0°00'00"		
13	89°38'37"		
	4/358°34'50" 89°38'42.0"		
26	179°53'36"	4664.480 .475 .475 .475	4664.476
	359°34'20" 179°53'35.0"		
8	0°00'00"		
27	142°10'29"	4231.970 .980 .970 .970	4231.973
	4/208°41'41" 142°10'25.3"		
28	118°42'55"	3015.045 .020 .035 .020	3015.030
	2/237°25'45" 118°42'52.5"		

2662.806*

29.1 +12
708
13

8

26

* 2662.791 on ref. sheet for Cor. Sec. 32

Chester A. Parsons, PE

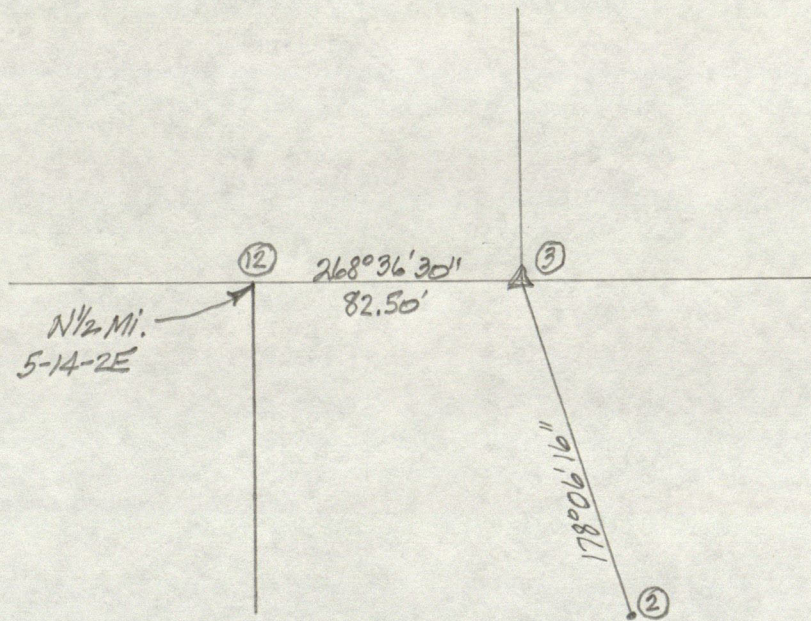
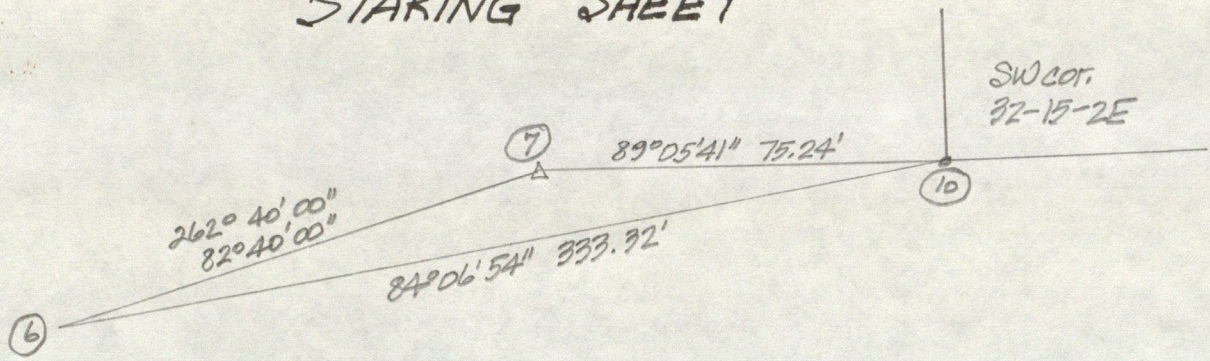
SHEET _____ OF _____
Stanley M. Shartle, PE LS

PARSONS & SHARTLE ENGINEERS, INC.

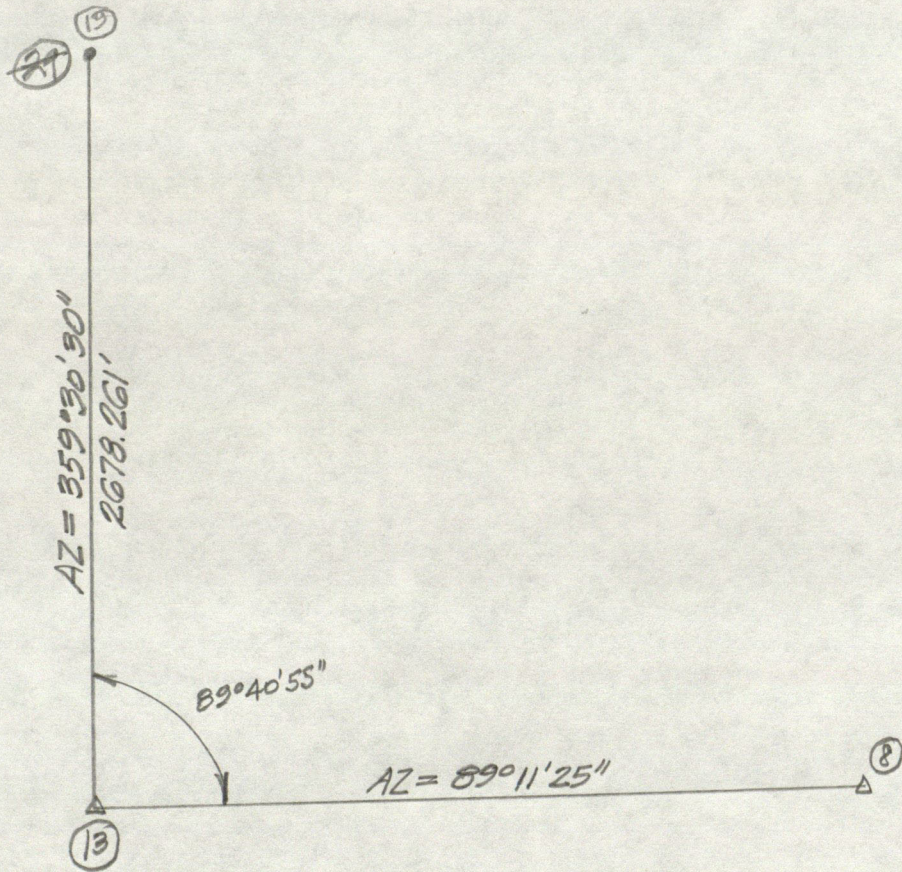
Job Hend. Co. Corner Stone Recovery Date 10/27/93 Hg. 29.1 Temp. 48° F. ppm 0

POINT	DIRECTION	OBSERVED HORIZ. DISTANCE	MEAN DISTANCE
26	0°00'00"		
27	127°34'51"	50.895 .895 .895 .895	50.895
	2/255°09'48" 127°34'54.0		
29	153°03'25"	154.340 .340 ^{+R} .335 .340	154.42 Reference cor. weather Board
30	147°25'16"	119.220 .220 .220 .220	119.220 SE. Cor. Garage under Const.
25	0°00'00"	126.400 .415 .415 .410	126.410 Note: corner stone is 5.7' S. of Chain Link Fence Post
24	18 44°14'23"	50.405 .395 .395 .380	50.394
13	0°00'00"		
22	55°02'29"	30.540 .540 .540 .545	30.541
21	2/110°04'58" 55°02'29.0"		

STAKING SHEET



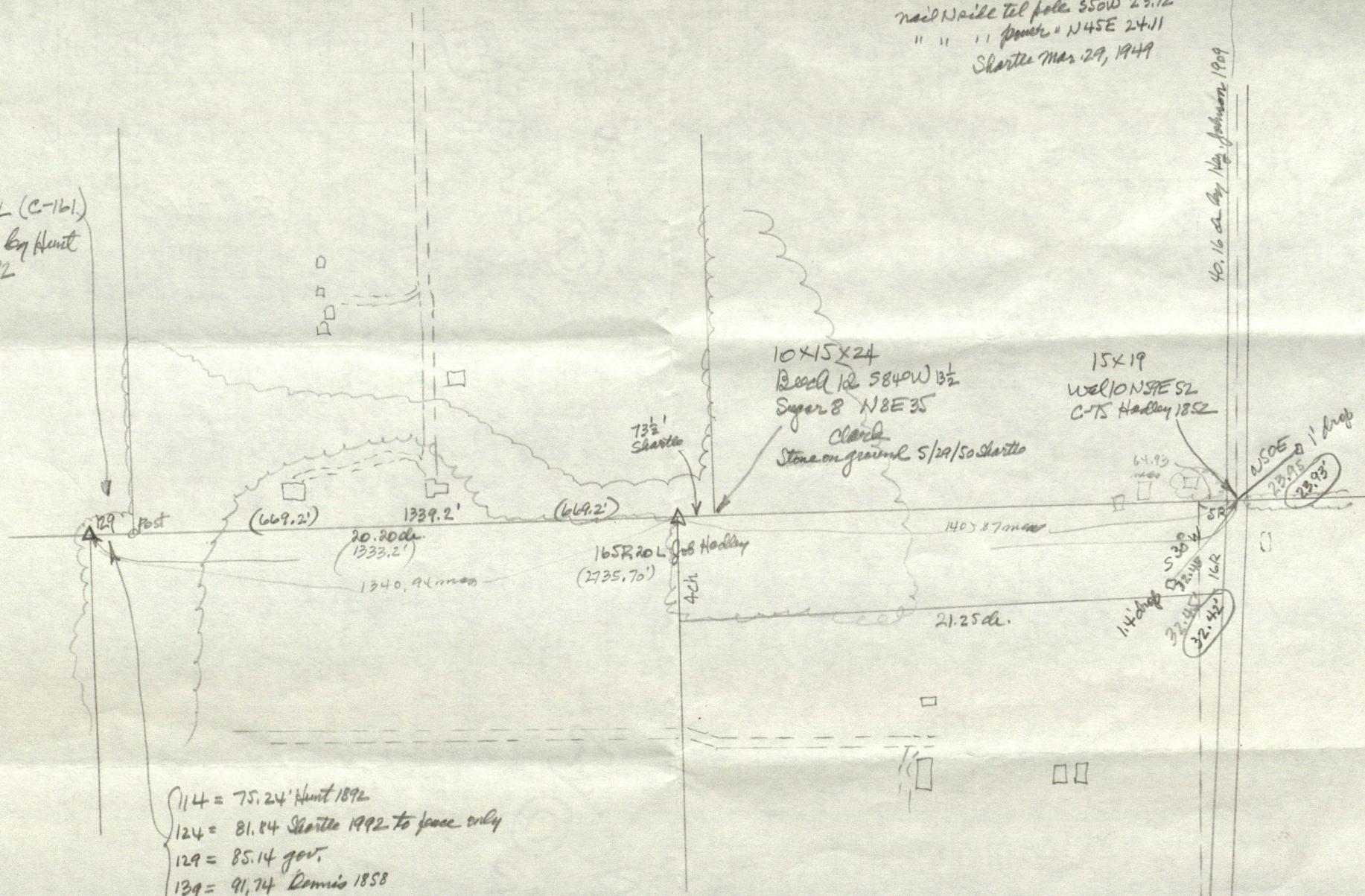
STAKING SHEET



5' keep 8x16x21 55°W 31.23'
 SE cor. conc. cor. post N50W 29.94'
 nail Nail tel pole. 55W 23.72
 " " " fence " N45E 24.11
 Shurtle Mar 29, 1949

139L (C-161)
 114L by Hunt
 1892

40.16 ca. by Map Johnson 1909



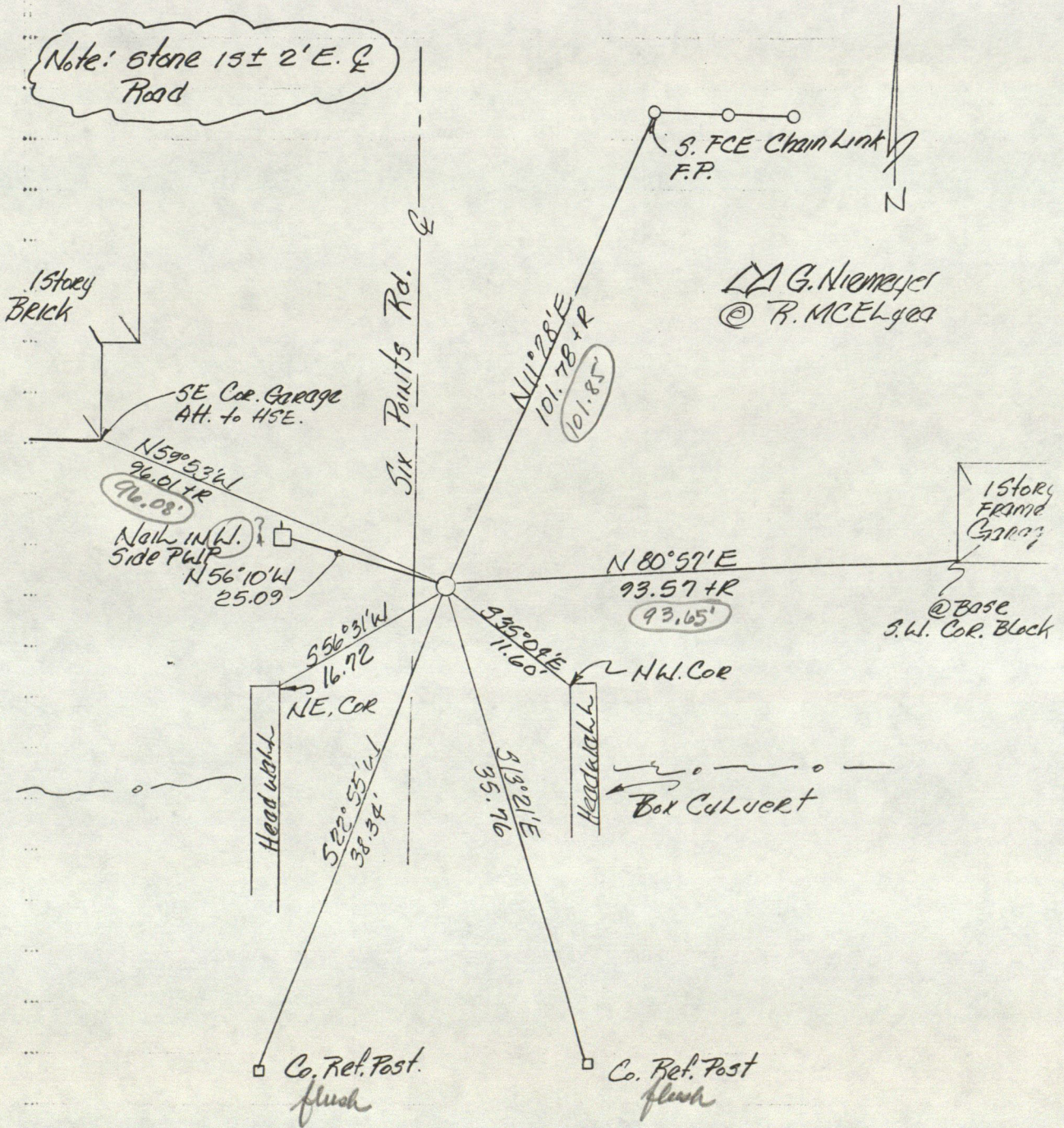
- 114 = 75.24' Hunt 1892
- 124 = 81.84 Shurtle 1992 to fence only
- 129 = 85.14 gov.
- 139 = 91.74 Dennis 1858

S 1/2 Sec. 20-15-2E

10/19/93

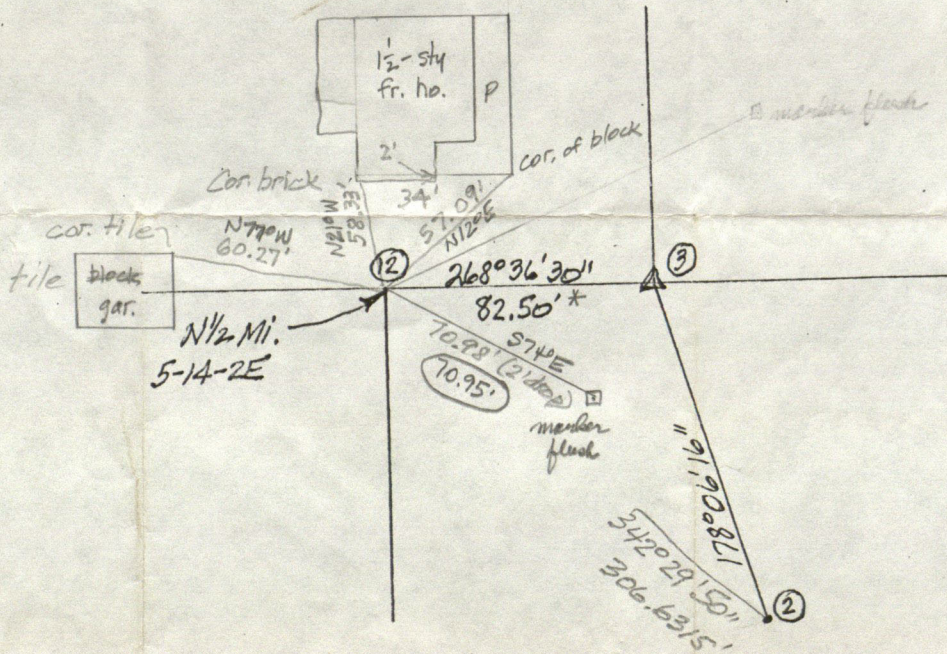
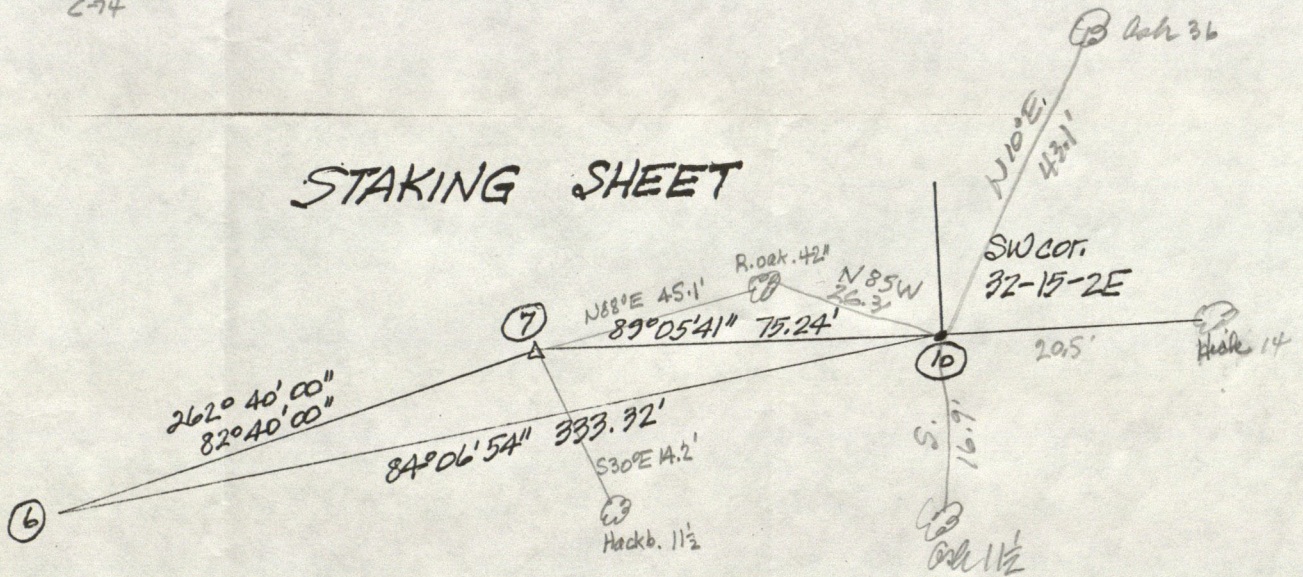
Depth of Stone = 4 3/4" Below Summit. w/ Cut "+"

Note: stone 15± 2' E. of Road



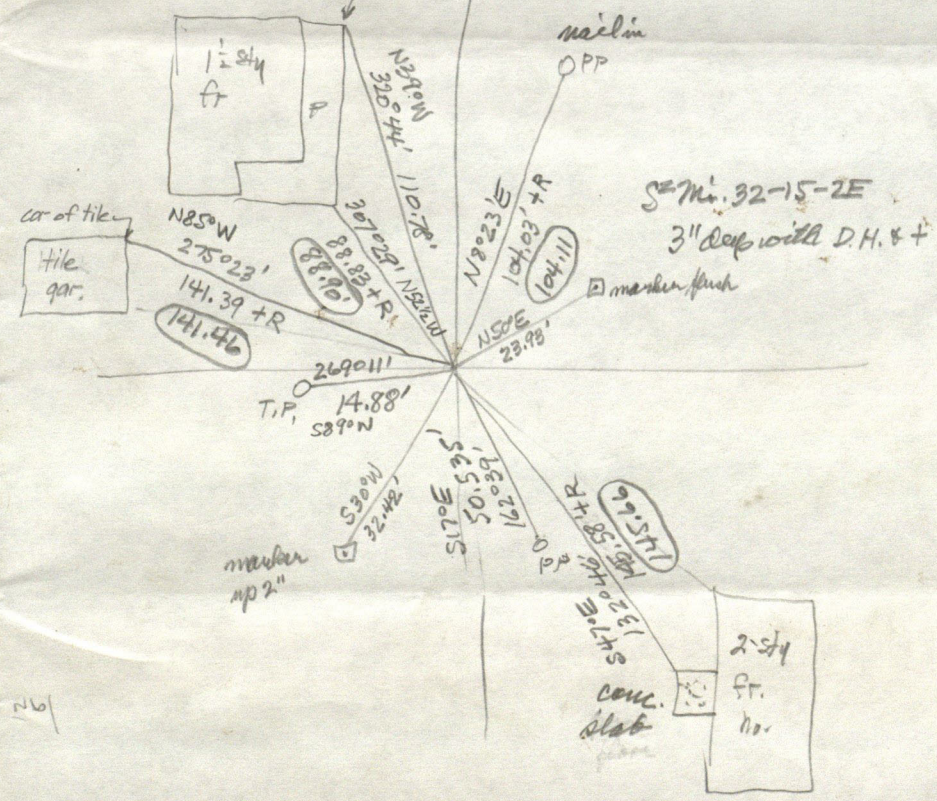
Look for W 2 mi. 29 36-39' S. 4 32' W of (24)
 old refs: Oak 15 S 1 1/2° E 14
 stone 9x11 Elm 24 N 87° E 22
 C-74

STAKING SHEET



* from Job Kelley's survey in Book C, p. 322.
 1870

cor of found. block

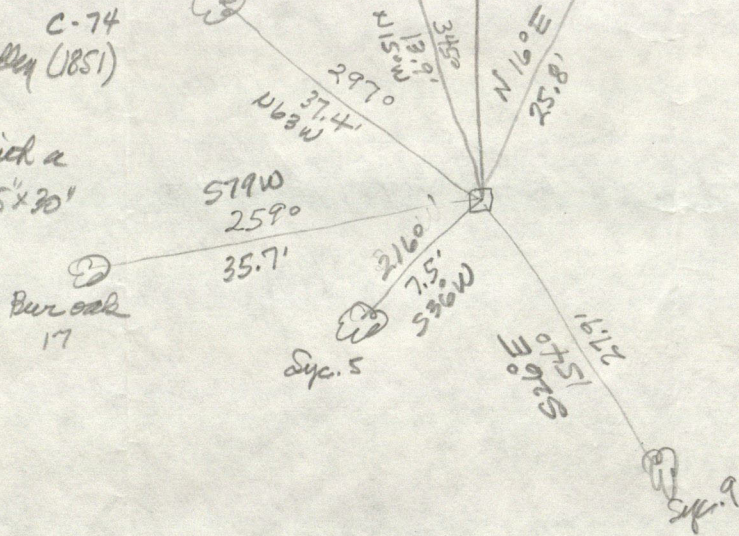


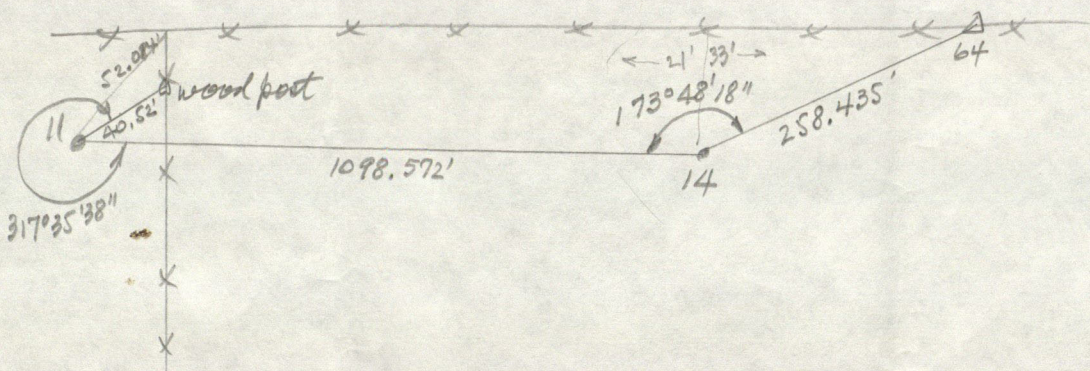
SE Mi. 32-15-2E
3" deep with D.H. & +

NE cor L+14-2E
R cor 4 1/2 N88E 45.1'
Mark 11 1/2 S30E 14.2'

2
871

9x11
1
Steak by Job Hadley (JBSI)
found 7" deep
Replaced it with a
core moist 5x5"x30"
showing 5"





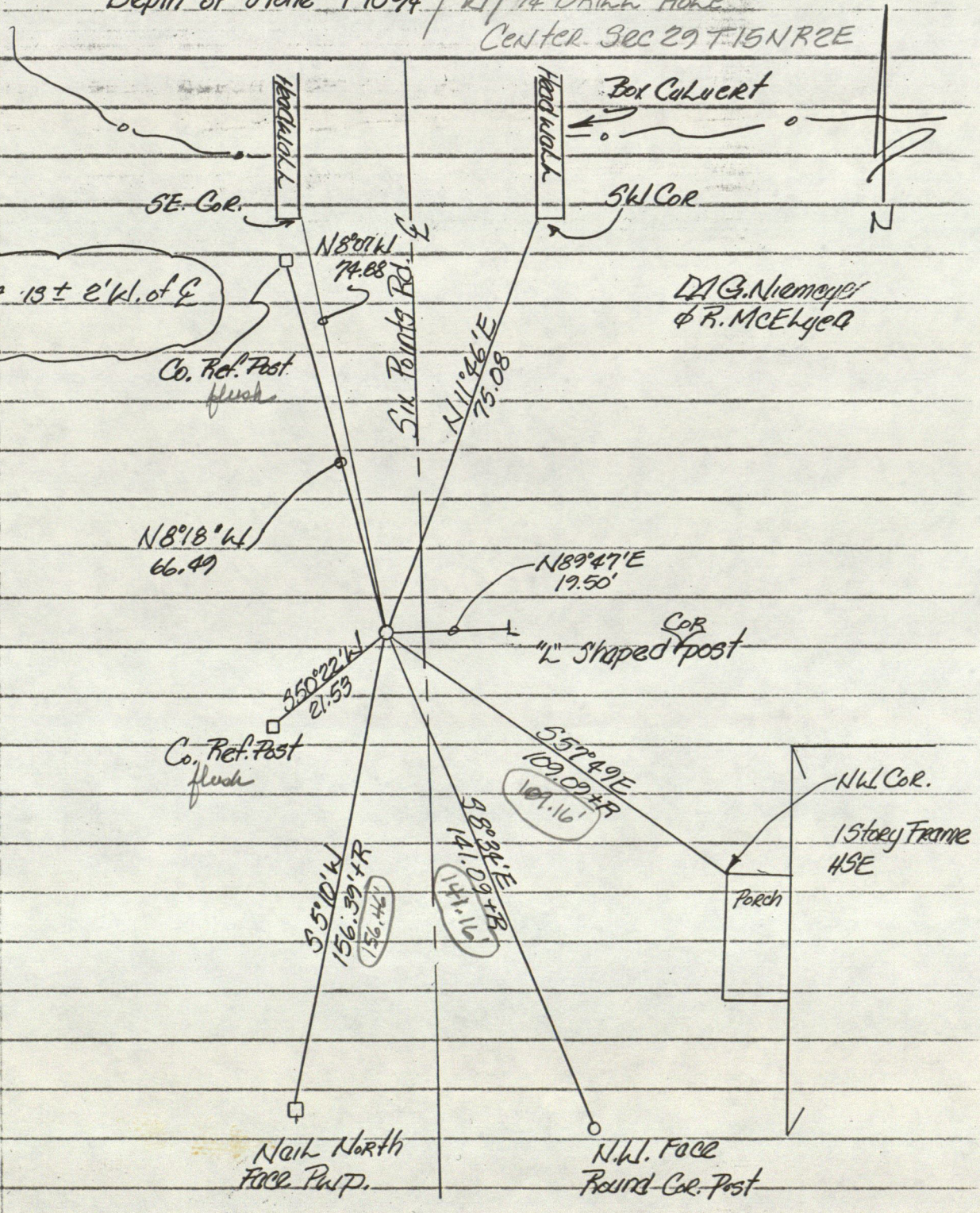
10/21/93

Depth of stone 1'10 3/4" / 1 1/4" DRILL Hole

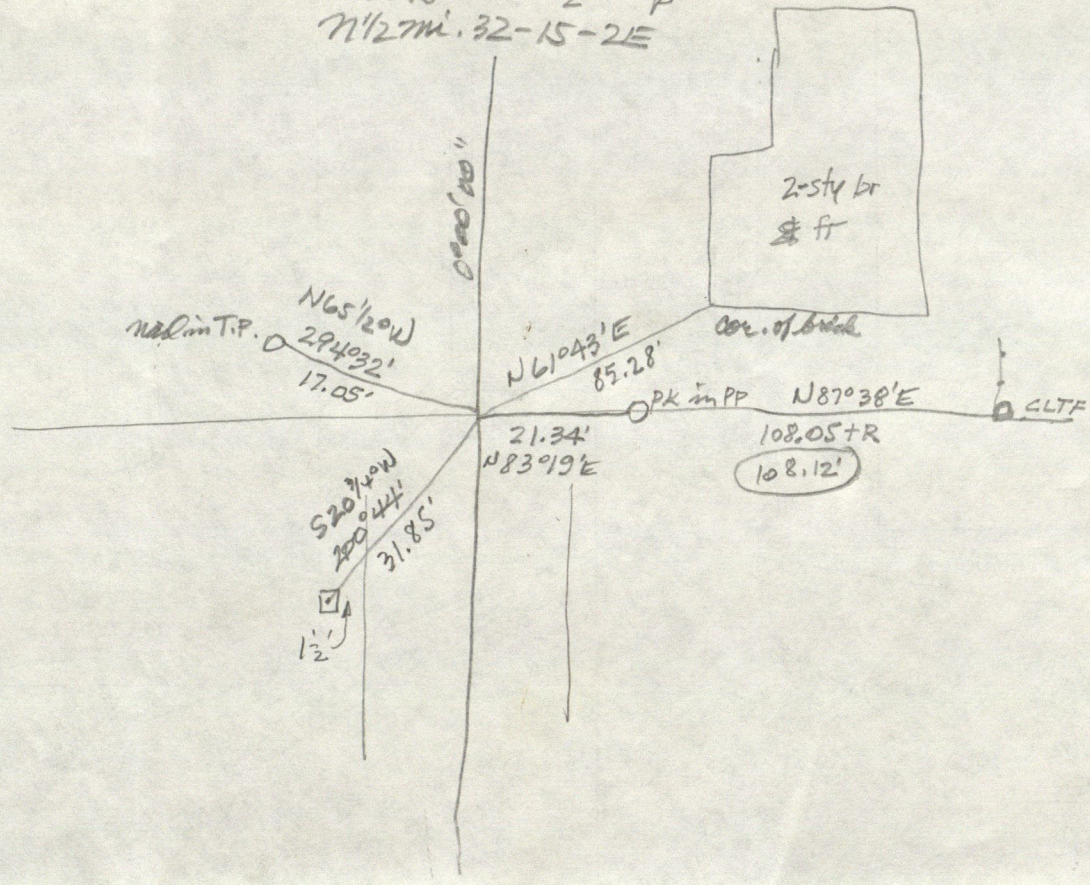
Center Sec 29 T15N R2E

Note: Stone is ± 2' W. of E Road

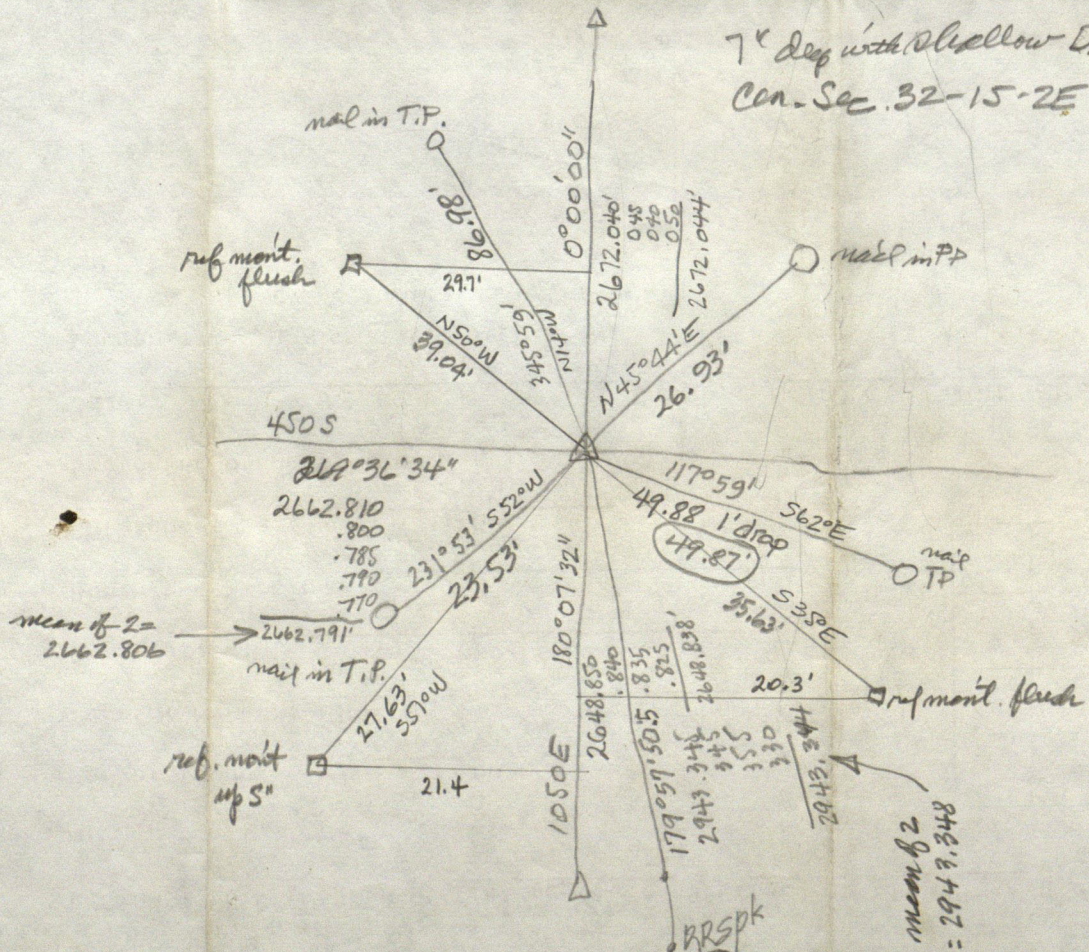
D.A.G. Niemeyer & R. McElroy



2660.5 6 1/2" deep
 N 1/2 7m. 32-15-2E



7" deep with 1/2" yellow D.H.
 Cen. Sec. 32-15-2E



W²mi. 29 9x11

SW cor. 29 12x16 west side

C-74

19R 20 1/2 L (1976.832) ^{try 1988.6} N of SW cor. 29 8x12

(R. cor. 14 N 4 1/2 W 36 B. cor. 20 S 46 W 51)

thence N 99R 20.1 L (1646.766') to 16x80

(B. cor. 16 S 54 E 78 W. cor. 16 N 41 E 114)

C-213

W²mi. 29 (B. 15 S 1 1/2 E 14 E. 24 N 87 E 22)

thence S 60 R 5 L (993.30')

~~N²m. 32-15-2E~~

~~NW cor. home SE 76.60'~~

~~P.P. NE 86.16'~~

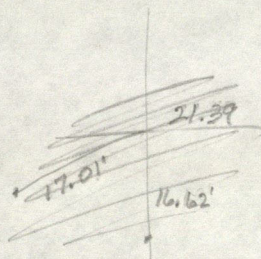
~~T.P. SW 18.00'~~

~~SW cor. home SE 116.60'~~

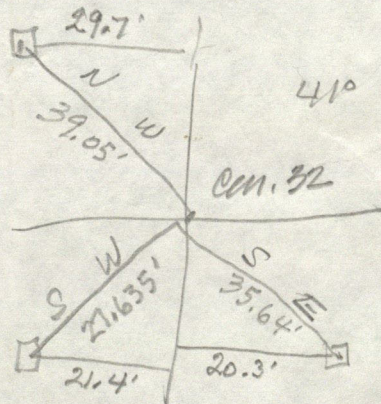
~~2671.9' to con. sec. 32~~

~~2674'~~

SS 20 Apr. 1949



Con. 29-15-2E good atom 18" deep
 SE cor. W handrail bridge NW 74.35'
 SW " E " " NE 74.59'
 metal cor. post E 19.53'



S²m. 20-15-2E 3" deep

wood cor. post E 14.38'

T.P. N80W 21.69

NW cor. E curb of bridge S40E 11.63'

NE " W " " " S60W 16.70'

SW cor. 20-15-2E stone 8x12x16

stone W 21.93'

cherry 10 N45W 2.10'

E. edge cor. post W 0.20'

970.66' S of E Tr. R/W being 80' S/E of Natl. Rd.

1949