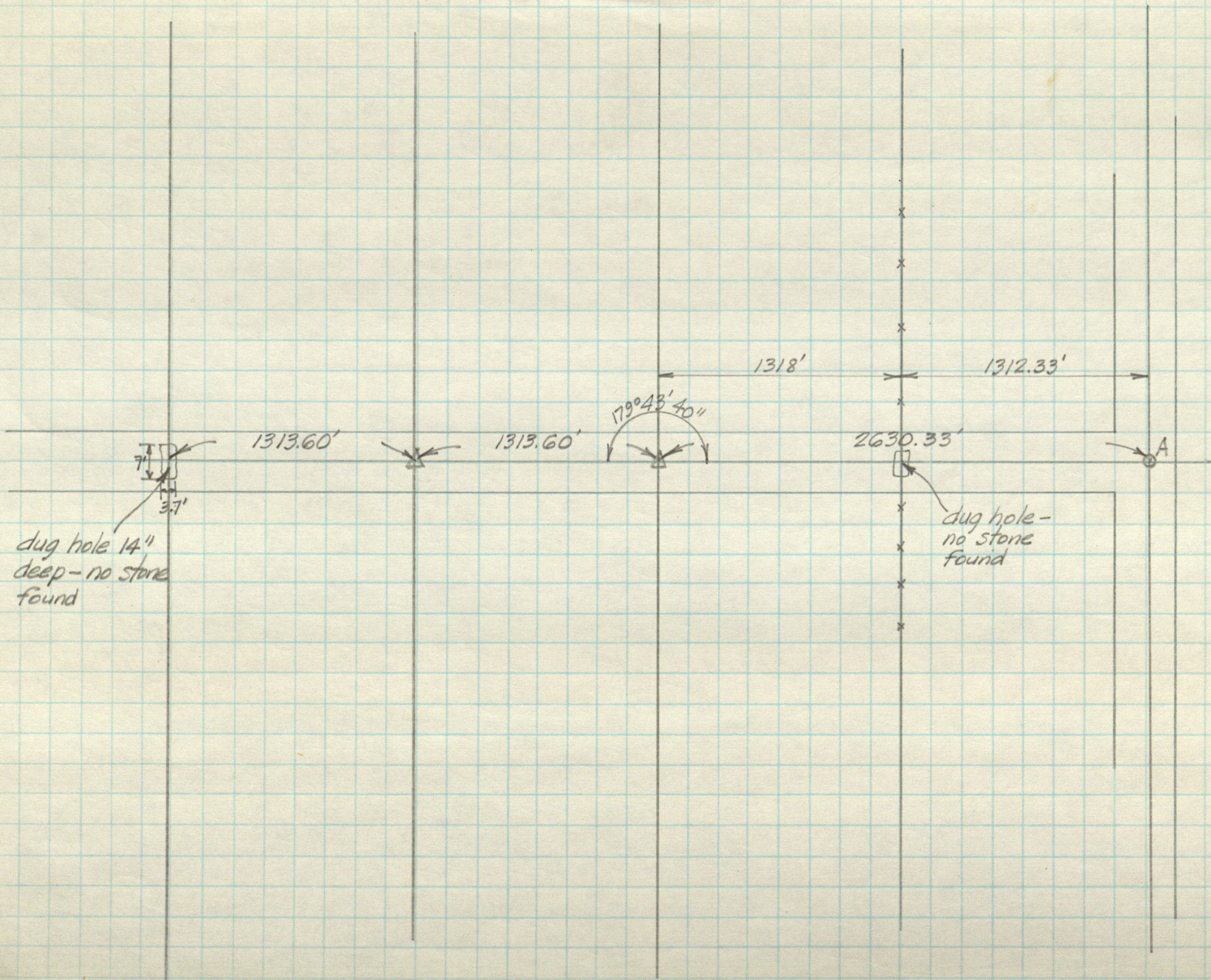


15-16-1W ROAD 450 N.



99
53

Mr. Parker said stone ejected by road grader
in 1920's. Nearby owner the drove harrow tooth in
hole before point was lost.
Harrow tooth 6" deep in good condition

NW cor brick house S42°E 98.20'
SE " block found to N22°W 167.28'
SW fr. barn S 74°E 94.37'
Power pole N81°E 14.24'

Pin oak 24 N58 7/4 E 67 1/2 (44.55')
W. ash 26 N21 W 42 (27.72')
C-12

28x10 (stone 5 on line 25L
Oak 12 N59 3/4 W 109 1/4 L
C-242 loc. 19, 1867

not found

reloc. by meas.
6x9x11 tolerably
smooth negrohead.
Rough & jagged with stone
14x21x24 tapering to top
S43°E 35L (23.11')
C-369 (C.M. Briggs?)

Heck 25 S98°W 31 (20.46')
Burr oak 12 S32E 34 (22.44')
B-71

gray stone
3" deep
old tel pole N48°W 24.34'
Ash 34" S84°W 182.14'
Oak 10" South 2'W 26.4'
Old wood cor. post S6°W 15.09'

stone
showing 2" - *at
Oak 24 South 91.4'
PK in old wood cor. post S 14.78'
" " tel pole S80°W 60.73'

Burr oak 18
N43 3/4 W 128
C-99

10

145

121R

80R16

40R8L

92R