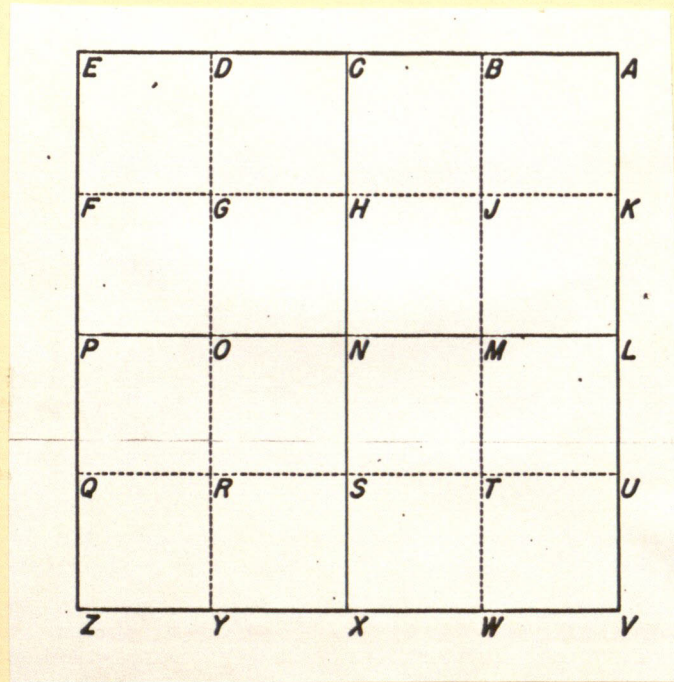
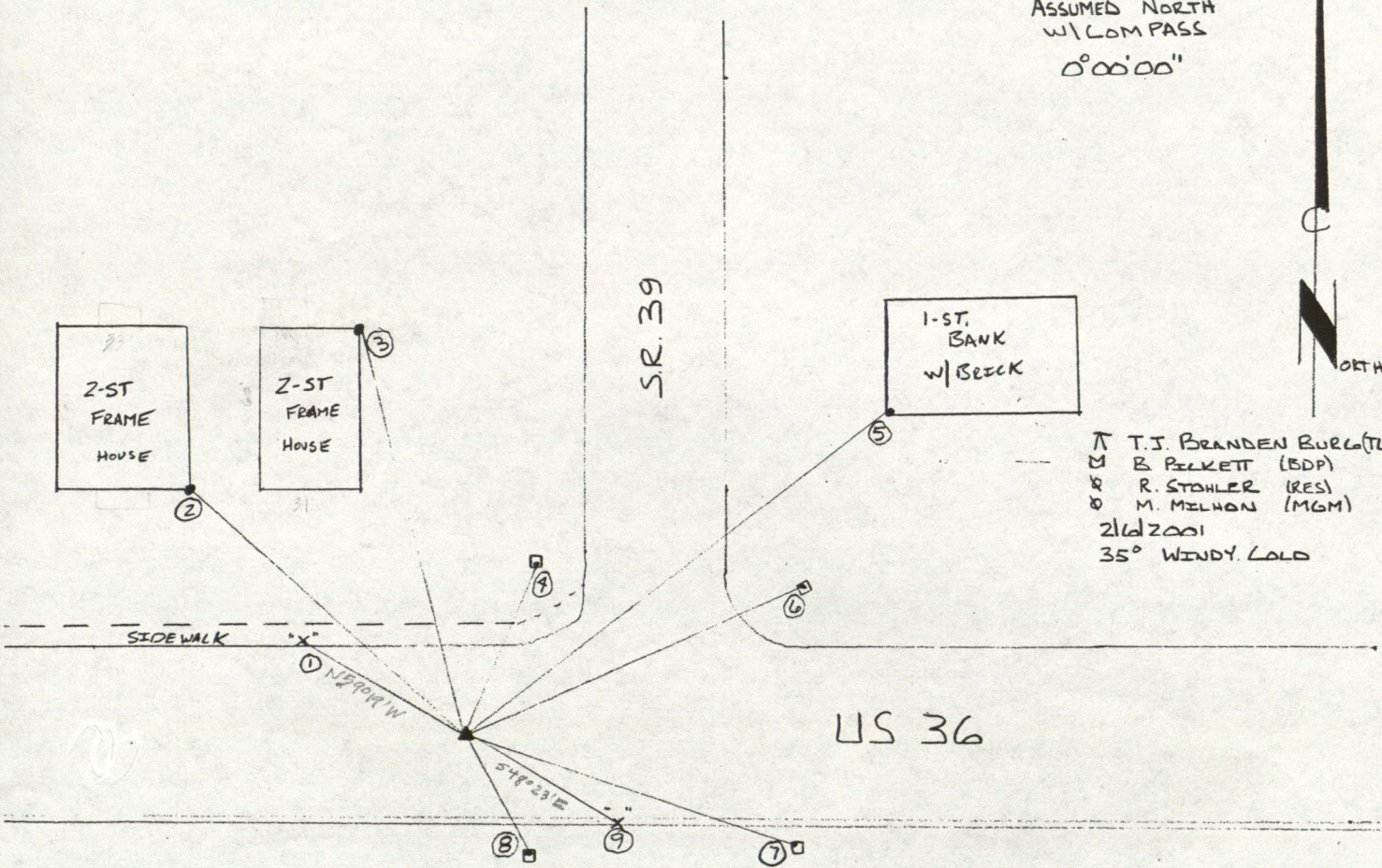


2001 CORNER STONE PROGRAM



SEL. 9 T15N, R1W C

ASSUMED NORTH
W/ COMPASS
0°00'00"



T T.J. BRANDEN BURL (TJB)
M B. PELKETT (BDP)
R R. STAHLER (RES)
M M. MELHON (MGM)
2162001
35° WINDY. COLD

	ANGLE	DISTANCE	DESCRIPTION
①	300° 41' 301° 36' N59½°W	41.43'	(EXISTING) CUT "x" ON SIDEWALK NW OF MONUMENT
②	289° 29' 289° 16' N71½°W	131.89' -R 131.80'	SE COR. OF BLOCK FOUNDATION
③	337° 41' 338° 29' N22½°W	101.20' -R 101.16'	NE COR. OF BLOCK FOUNDATION
④	25° 26' 26° 14' N25½°E	62.70'	" " CUT ON BOLT OF TRAFFIC POLE
⑤	59° 27' 60° 15' N59½°E	169.00' -R 168.96'	SW COR. OF BRICK ON BANK
⑥	65° 30' 66° 18' N65½°E	120.62'	" " CUT ON BOLT OF TRAFFIC POLE
⑦	105° 52' 106° 40' S74°E	91.04'	" " " " " " " "
⑧	147° 148° 46' S37°E	27.82'	" " " " " " " "
⑨	131° 37' 132° 25' S48½°E	24.91'	EXISTING CUT "x" ON CURB SE OF MONUMENT

January 23, 2001, Corner Stone Meeting

& December 9, 2001

Center Township

9-15-1W C (West Main St., Danville) ✓

11-15-1W D (East Main St., Danville) *done as 2-15-1WY ✓*

Franklin Township

9-14-2W P (Behind Dave's house) *Jeff will do.*

Guilford Township

31-15-2E M (Set marker in Stafford Road)

31-15-2E L (Set marker in Stafford Road)

32-15-2E O (Set marker in Stafford Road)

32-15-2E N (Set marker in Stafford Road)

25-15-1E N (U.S. 40 reconstruction - set monument)

20-15-2E N (U.S. 40 reconstruction - set monument)

20-15-2E <> (U.S. 40 reconstruction - set monument on County Line at center line of Cumberland Road near Hobbs Nursery) *done*

check

Lincoln Township

~~7-16-2E L (Replace new pipe corner destroyed by sewer construction-see Ott)~~

8-16-2E D (May be destroyed in 56th St. reconstruction)

11-16-1E G (In danger of being destroyed)

11-16-1E L (Replace destroyed stone with concrete monument) *done*

~~11-16-1E <> (Stone deep at U.S. 136 and Grant St. -do only if INDOT reconstructs U.S. 136)~~



CASINO ♦ RESORT

E 1/4 cor. 11-16-1E done

SE " 11-16-1E done

SE cor. Homan & Thomas add.

~~Cor. 17-15-1E~~ (Jeff will do)

~~1/2 D.T. @ E. Hwy. St.~~ " " "

SW cor. D.T.

Cor. S. SE 1-16-1E DO SOON!