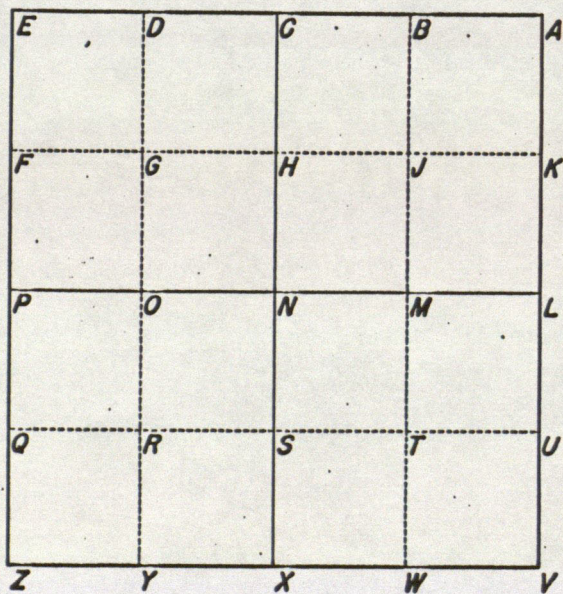
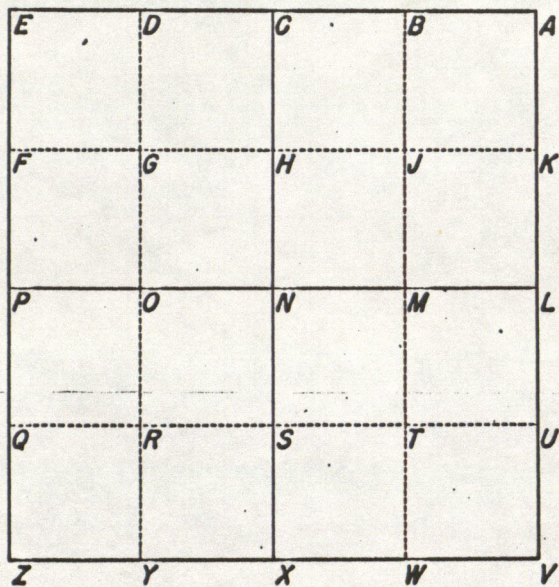
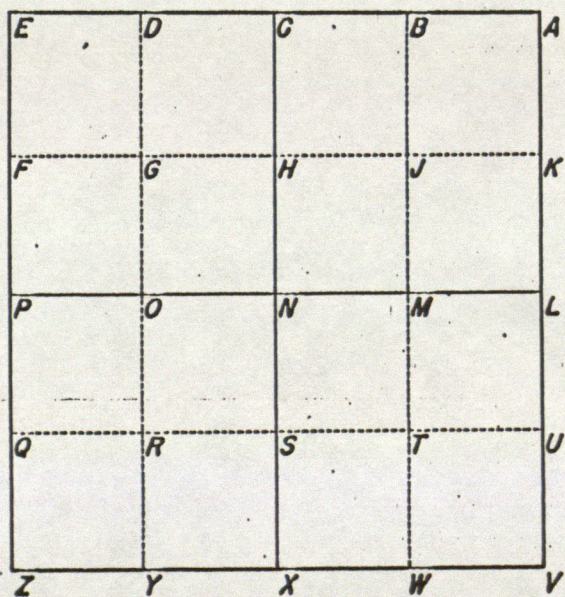
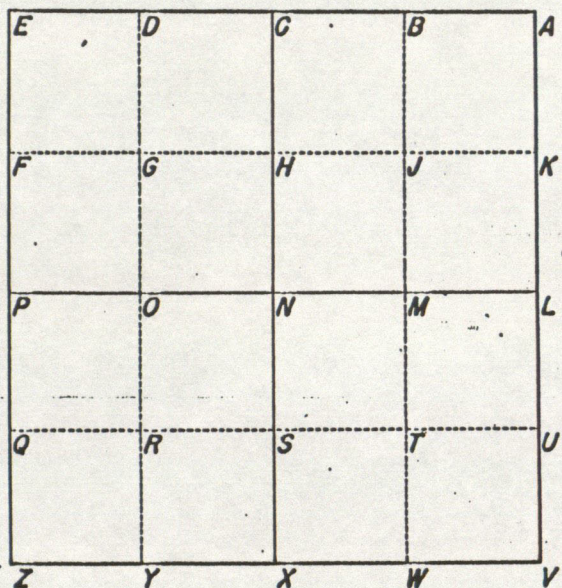


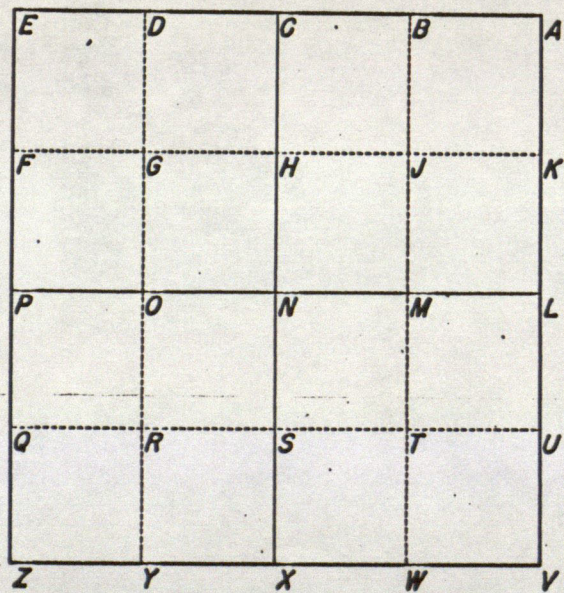
CORNER STONES 2003

<i>E</i>	<i>D</i>	<i>C</i>	<i>B</i>	<i>A</i>
<i>F</i>	<i>G</i>	<i>H</i>	<i>J</i>	<i>K</i>
<i>P</i>	<i>O</i>	<i>N</i>	<i>M</i>	<i>L</i>
<i>Q</i>	<i>R</i>	<i>S</i>	<i>T</i>	<i>U</i>
<i>Z</i>	<i>Y</i>	<i>X</i>	<i>W</i>	<i>V</i>

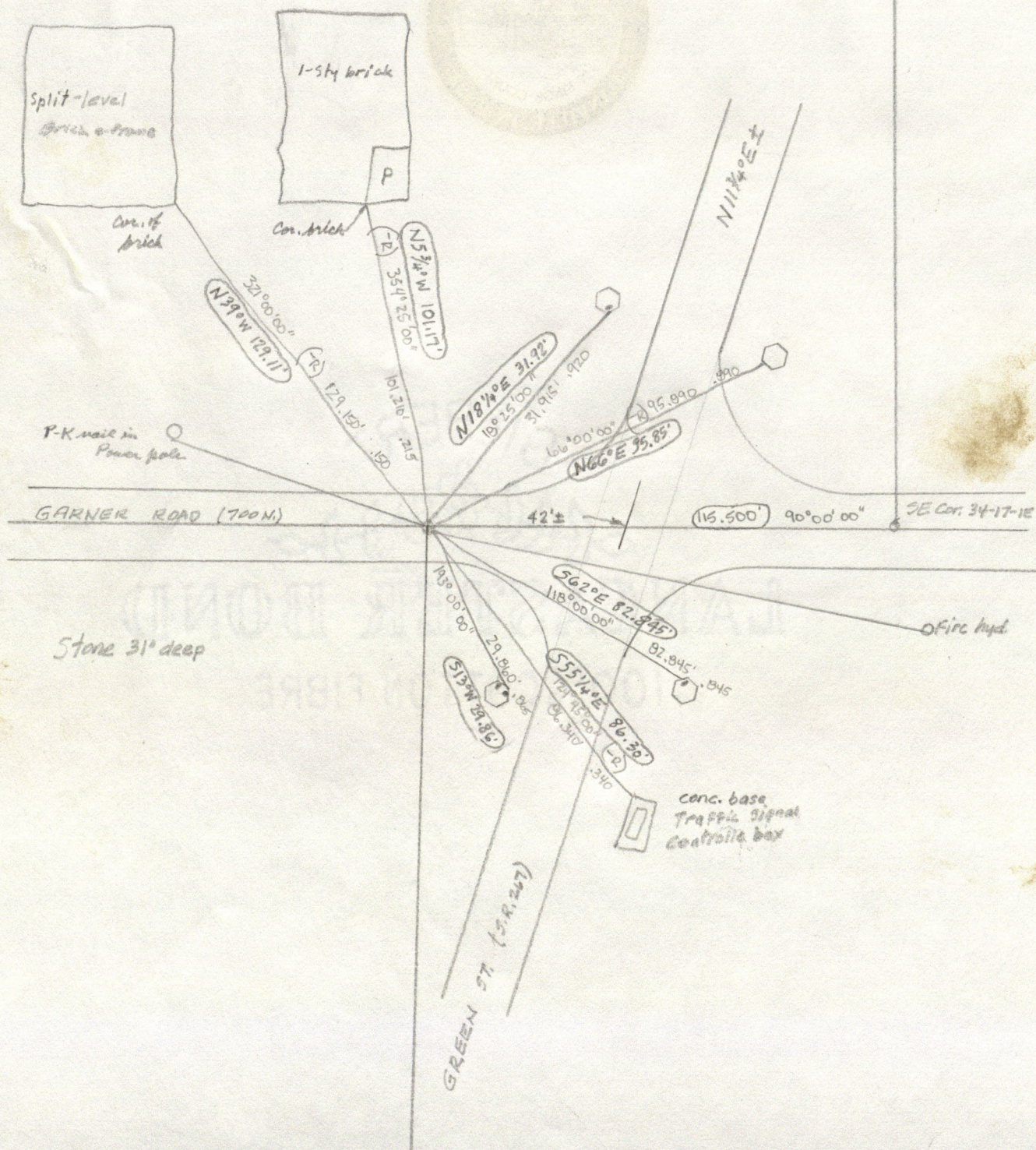


ET





2-16-1E (



PARSONS, CUNNINGHAM & SHARTLE ENGINEERS, INC.

46 SOUTH TENNESSEE STREET
DANVILLE, INDIANA 46122
(317) 745-9061
FAX 745-9068

Jan, 2003
February 21, 2002

Hendricks County Surveyors Office
Government Center
Danville, Indiana 46122

Attention: Dave Gaston

Subject: 2003 Cornerstones

Dear Dave:

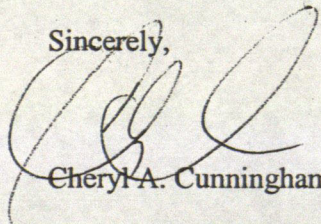
As you are aware, the construction season slows down this time of year. Therefore, this is the time of the year that we like to dedicate to projects such as the cornerstone project. We would like to get started on the 2003 cornerstone program in the next week or two and have prepared a list as to the cornerstones we would like to work on as follows:

27-15-1W C
27-15-1W D
23-15-1W N
23-15-1W P
34-17-1E P
34-17-1E X
34-17-1E Z

We also have some work left to do on a couple of the cornerstones on the 2002 list. We need to take references to 2-16-1E C, and we need to repair the monument on 11-16-1E C. We will add this work to the 2003 list.

Please let us know if you have any additions or revisions to this list.

Sincerely,



Cheryl A. Cunningham, P.E.

Cc: Grant Niemeyer
Stan Shartle



Frank Gibbs

Pt. NW⁴ SE⁴ & Pt. NE⁴ SW⁴ 23-15-1W

Stanley Shartle
James Gossett

May 11/12, 1949

Center 23-15-1W - a huge gray stone found about 1 1/2 ft east of corner post and is visible without digging. No reference taken. The witness stump of the W. oak 30 N 8 1/2° W 90 L. still is barely visible after some 80 or more years since it was taken.

W 1/2 mile stone 23-15-1W found about 8 inches deep by measuring from the old government witness tree (viz. the Walnut 28 N 15° E 12 L) which was taken by Stephen Collett on March 16, 1829 in survey

17

for Surveyor-General of Land Office. The tree now measures 37" dia. E & W. and 50' dia. N & S. and is still living. This is the second original government witness that I have found in Hendricks County. The fences come together at the tree instead of at the stone. New ties:

Gov. Walnut witness 37" x 50" N 15° E 5.6'

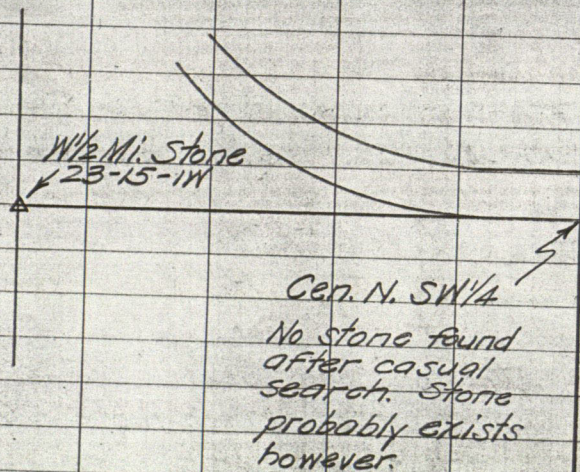
Sugar 27" S 20° E 40.2'

Cottonwood 30 N 75° W 66.3'

Sugar 5 N 80° W 35.1'

I now run the line thru to the section center and set a good stone on the 1/2 sec. line 33 rods N. of the center of sec. wit. by N. edge of wood corner post 5 on line feet.

Additional work was executed as shown on following sketch:



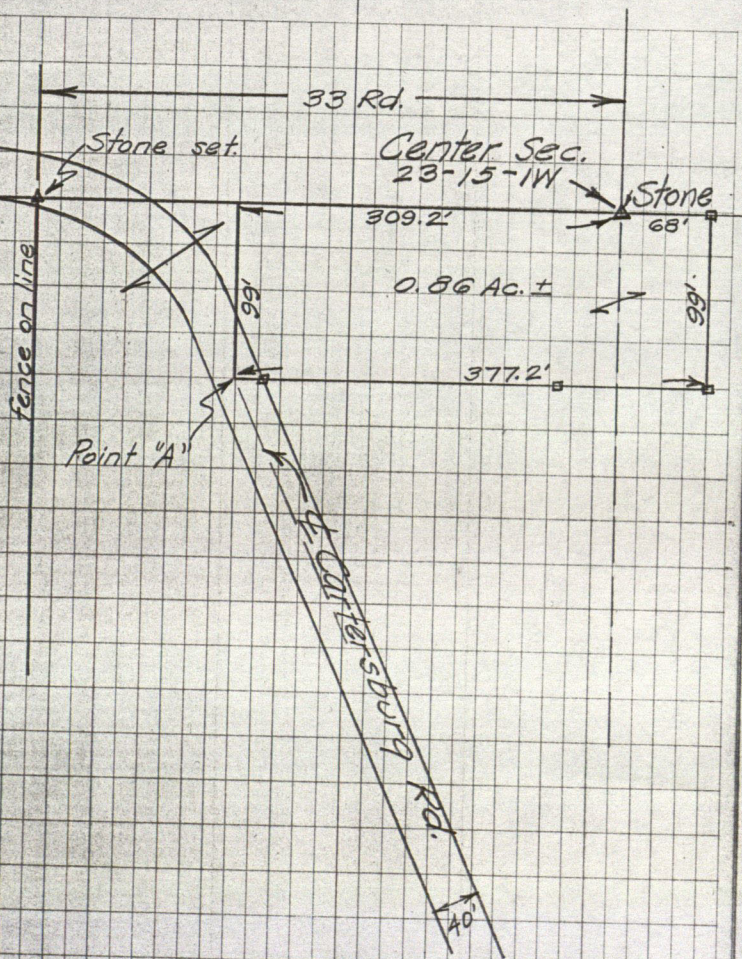
Point "A" referenced as follows:

SW corner concrete kerndrail N40°W 53.96'

SE " " " N70°W 33.14'

Concrete end post N15°E 31.96'

W 1/2 Mile stone found 8" deep on 3-30-88.
I took it up, measured it, and found it to
be a black stone 5" x 12" x 18". Reset it,
leaving it showing 3". All goes with
gone as well as the Sugar 5". The
Sugar 27" stump barely visible. New
refs.: I.P. found N20°E 9.9'
Hack. 18" S5°W 4.7'; Cottonwood 49"
N75°W 66.7' S.M. Shurtle



SW Cor. Sec. 34

BW 2-6-03

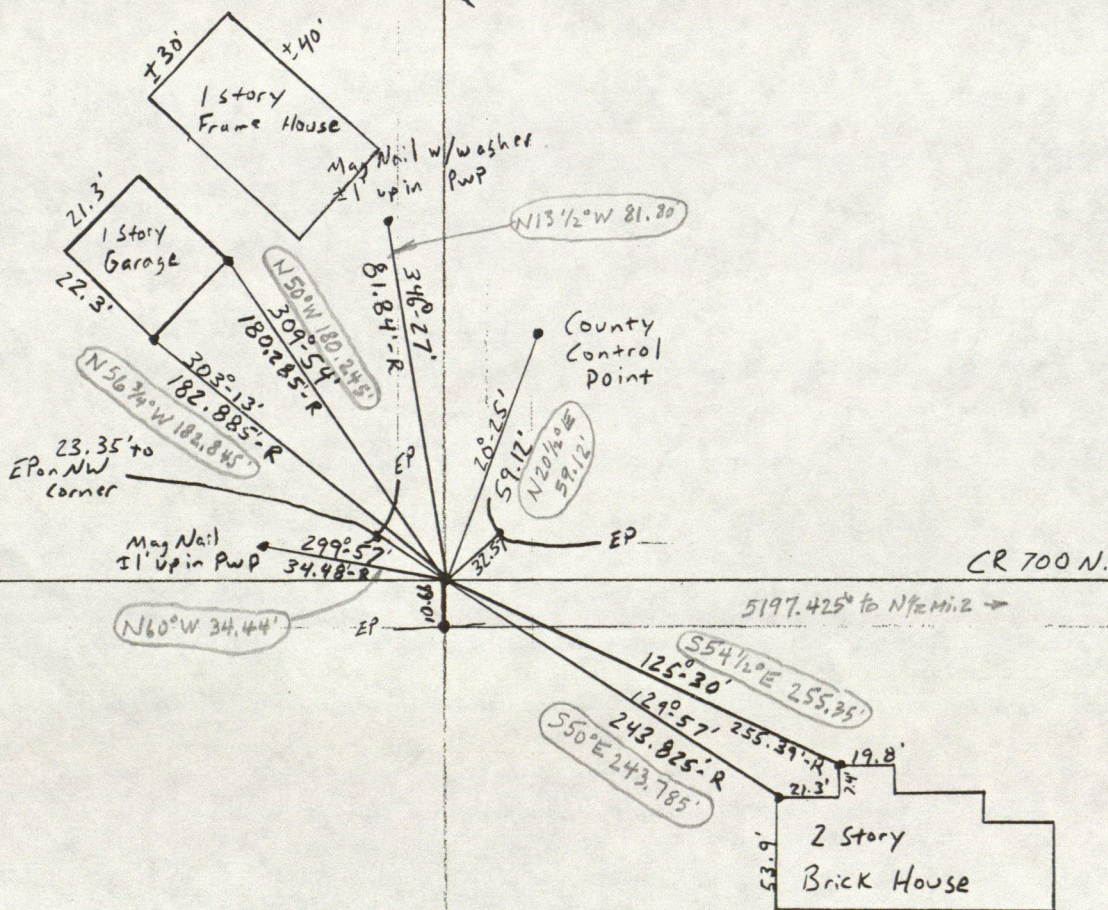
SH

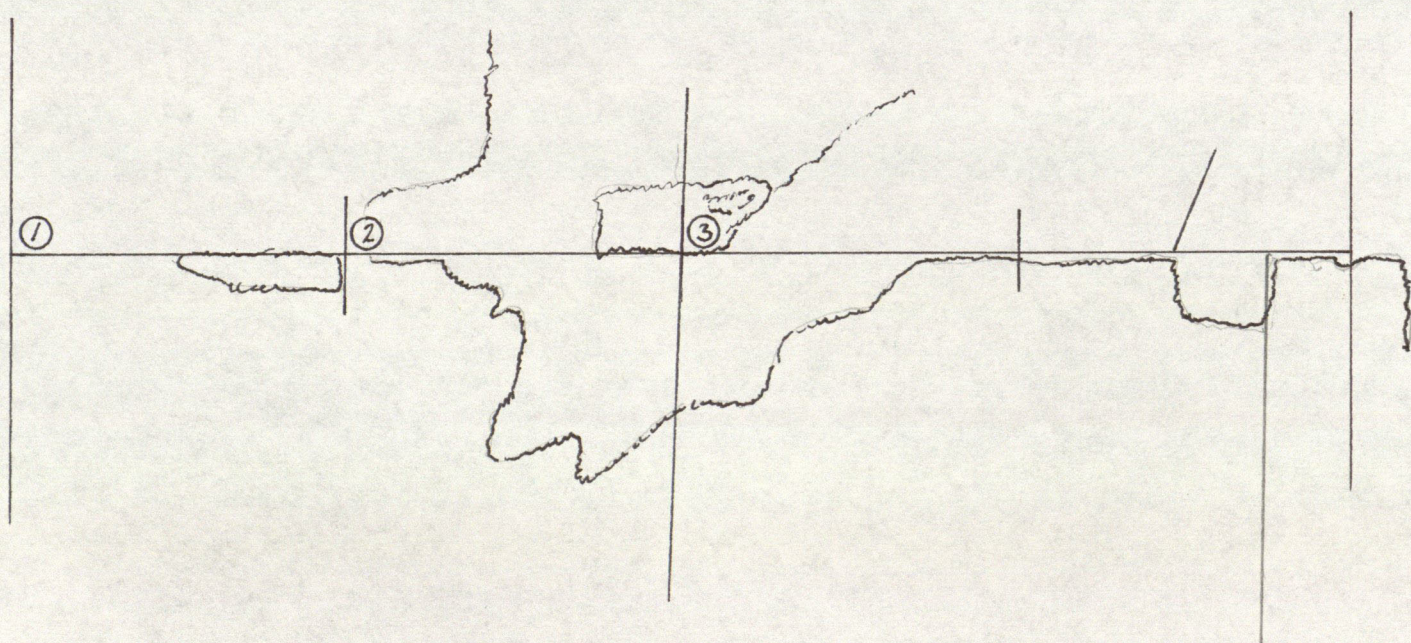
WW

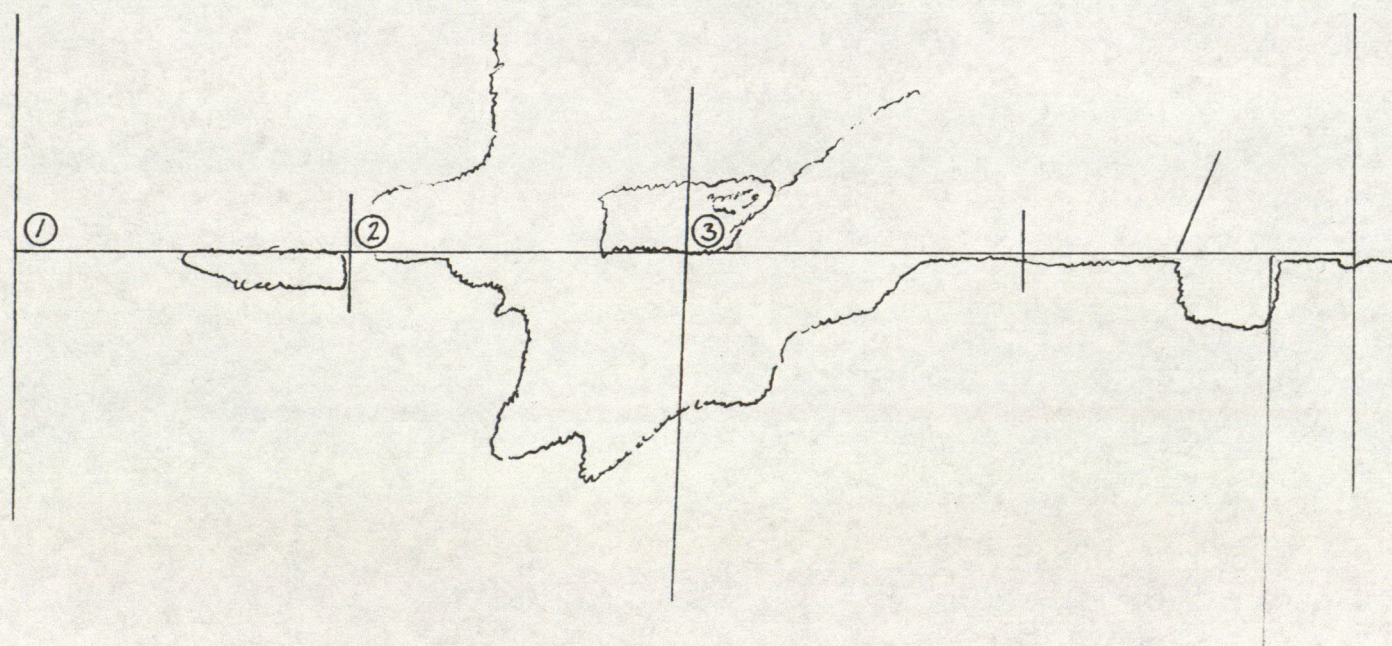
34-17-1E

CR 650 E.

Assumed 0° N 0.1205 E







SELECTION TO START THE 2003 CORNER STONE PROGRAM

27-15-1W C

27-15-1W D

~~23-15-1W N~~

~~23-15-1W P~~

34-17-1E P

34-17-1E X

34-17-1E Z

12-16-1E C

12-16-1E X

12-16-1E N

~~2-16-1E N~~

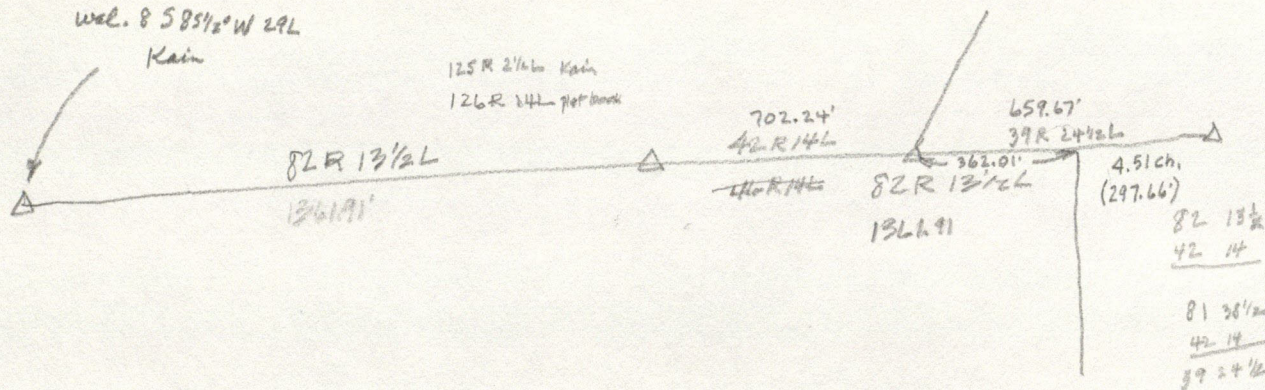
27-15-1W B

27-15-1W A

35-16-1W Y Check

Elm 15 $57\frac{1}{2}^{\circ}E$ 18.1L
 wel. 8 $58\frac{1}{2}^{\circ}W$ 29L
 Rain

125R $2\frac{1}{4}L$ Rain
 126R $1\frac{1}{4}L$ plot house



165 2

$\frac{2}{164} \frac{27}{82 \frac{13}{2}}$

~~16 28 15 10~~
~~18 78~~

113/105

~~11 1/2~~
~~11 1/5~~

W. Ash 20 N57°W 30L } 1821
Beach 10 S82°E 15L

High point large granite boulder N30°W ^{65.7} 55L (36.3')
Ash 24 N60°W 6PL (45.54')

Con. N NW 27 - stone - rock nearly level S22½°W 10L

Beach 6 N47¾°E 31L

" 14 N60°W 28½L

N² mi 12x18

Con. N NE 4 15x18 W Oak 18 N54½°E 137 (90.4') } C-15
E Oak 34 N2°W 172½ (113.8')

Stanley M. Shartle

REGISTERED PROFESSIONAL ENGINEER
REGISTERED LAND SURVEYOR
6575 KINGS COURT
AVON, IN 46123

February 24, 2003

David L. Gaston, R.L.S.
Surveyor of Hendricks County
Government Center
Danville, IN 46122

RE: 34-17-1E, X and Z

Dear Dave,

Attached hereto is a record of corner Z. It was only 21 inches deep, easy to find, the pavement hardness was "routine," and the search area was pretty much out of the way of traffic. So why did we put it on the program?

No fence, reference trees, or other good physical evidence exists at X to guide anyone to a small search area. Metal detected nearby seems too far east. The pavement there is extremely hard and thick so I wanted to confine our excavation to a minimum size. Trotter found distance ZX to be 2,654.6 feet and Garrison's measure was 2,653.0 feet. I thought by adjusting those lengths slightly for chaining calibration factors and then digging at the mean distance we might find the stone with the least amount of effort. But to do that we needed the location of Z. That is why I placed it on the program.

Our crew's search was only a start. If you want Jeff to resume the work I suggest that he dig south a foot and, if that fails, try going east next. If you wish us to continue the work we will use the saw to give the Cobra some relief.

Sincerely,

Stan

PROPOSED CORNER STONE PROGRAM FOR 2003

June 26, 2003

County = County Surveyor's Office Personnel

Parsons = Parsons Cunningham & Shartle Personnel

County to search for stones believed to be in pavement; Parsons to search for those believed to be in soil. The party that finds the stone, or sets a monument, records the references and makes the plat. "Monument" is a rebar in a 5x5x30-inch concrete marker.

- 12-16-1E C Pavement. Parsons will run a short traverse and set a mag nail where County should place a railroad spike or a monument.
- 12-16-1E N Soil. Parsons will run a medium-length traverse and set a monument.
- 12-16-1E X Soil. Parsons will run a difficult traverse and set a monument.
- 27-15-1W A, B, C, D Soil. Camp Short. After the leaves fall, Parsons will run a very long and complicated traverse, search for corners B, C, and D and restore any that are missing, including A. Expensive.
- 35-16-1W V Pavement. Parsons will spray-paint a search area for the county.
- 14-15-2W Soil. Northeast corner of Wheeler's Addition to Hadley. Parsons will run a medium-complicated traverse and re-set Trotter's stone which has been torn out and is lying flat on the ground.
- 14-15-2W Pavement. Southeast corner of Wheeler's Addition to Hadley. Parsons will run a medium-complicated traverse and set a mag nail where the County can set a monument.
- 22-16-1E N Soil. Parsons will run a long and very complicated traverse to restore this corner with a monument. Expensive.
- 22-16-1E X Soil. Parsons will run a long and very complicated traverse to restore this corner with a monument. Expensive.
- 15-16-1E C Soil. Parsons will run a long traverse and restore this corner with a monument.
- 34-15-1E X Pavement. Parsons will run a mile-long traverse and spray-paint a search area for the county.
- 10-14-1E M Pavement. Parsons will spray-paint a search area for the county. Dangerous because of buried cable or something nearby.