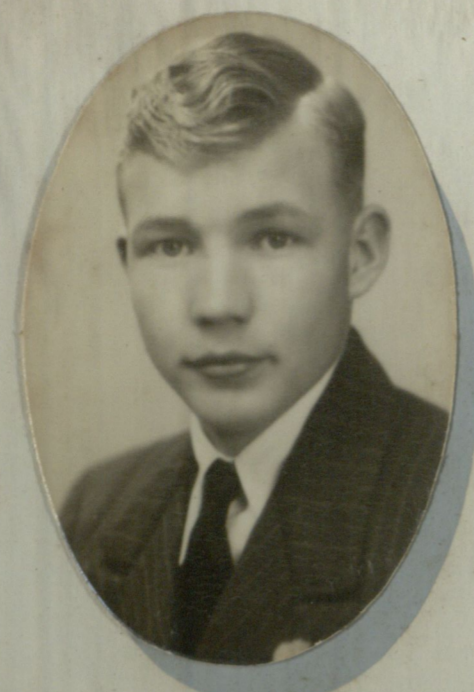




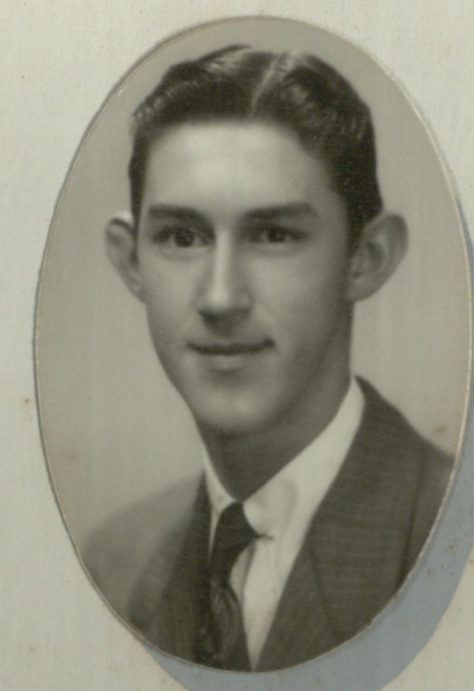
MARTHA E. CHURCH



S. WAYNE JOHNSON



DORIS E. PARKER



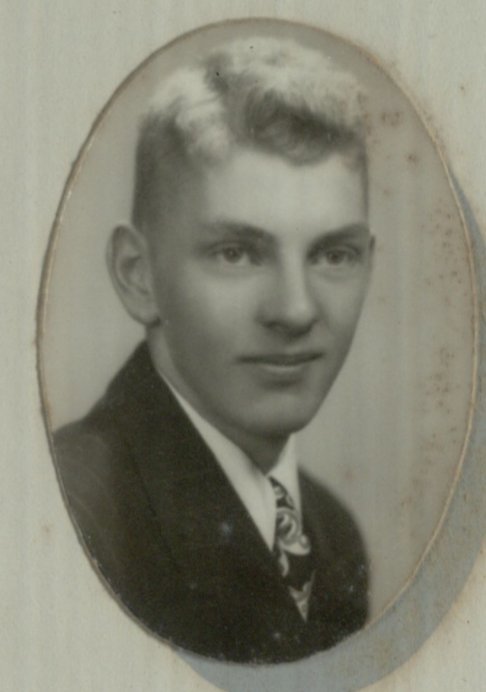
ELMER R. LAMBERT



LORENE STEWART



B. ELEANOR LIESKE



KENNETH H. MASON

1949

**NEW WINCHESTER**

**HIGH SCHOOL**

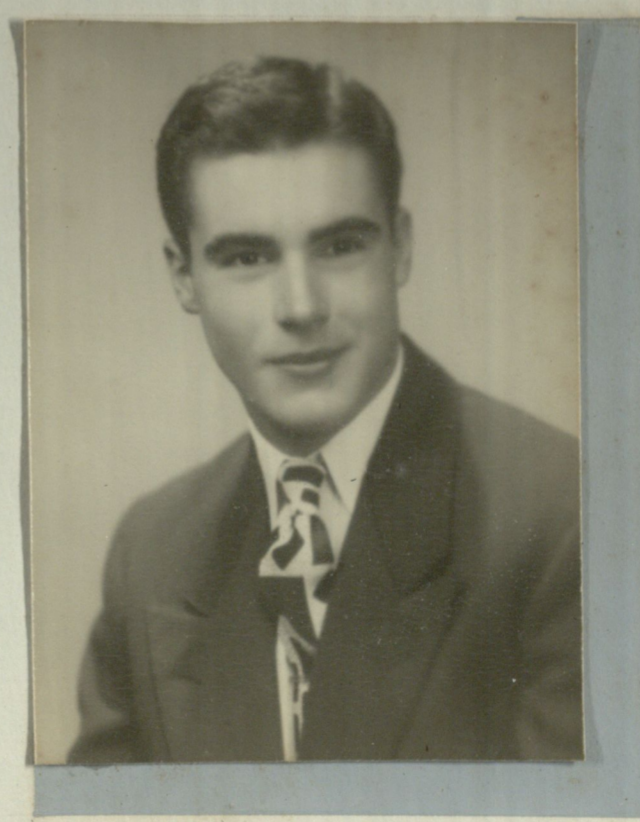
CLASS MOTTO  
 WE HAVE CROSSED THE BAY,  
 BUT THE OCEAN LIES BEFORE US.



ANITA RUSSELL  
SEC.



HERSCHEL C. CLARK  
PRES.



DONALD E. LOVE  
VICE-PRES.



MARGARET L. STEELE  
TREAS.



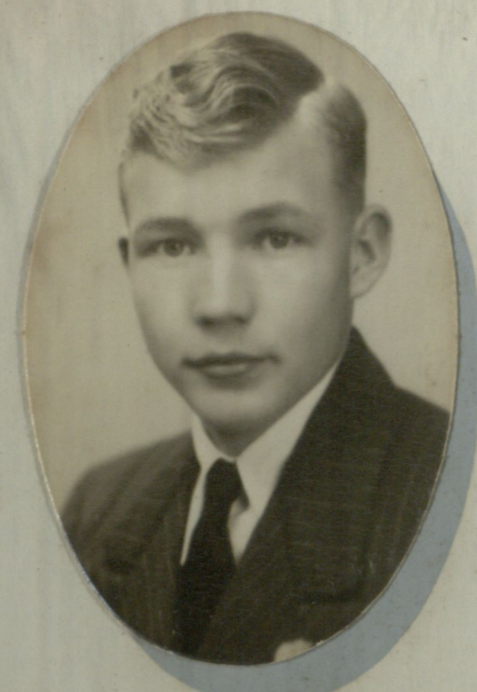
MR. GEORGE NEWELL  
SPONSOR-PRINCIPAL

CLASS FLOWER  
 RED AMERICAN BEAUTY ROSE

CLASS COLORS  
 RED AND SILVER



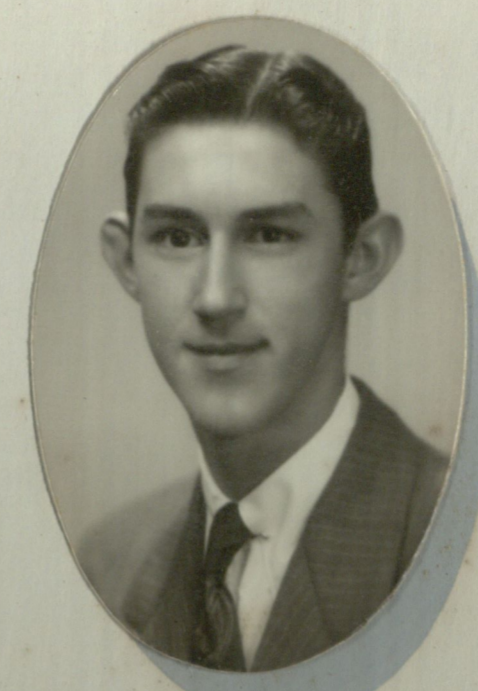
MARTHA E. CHURCH



S. WAYNE JOHNSON



DORIS E. PARKER



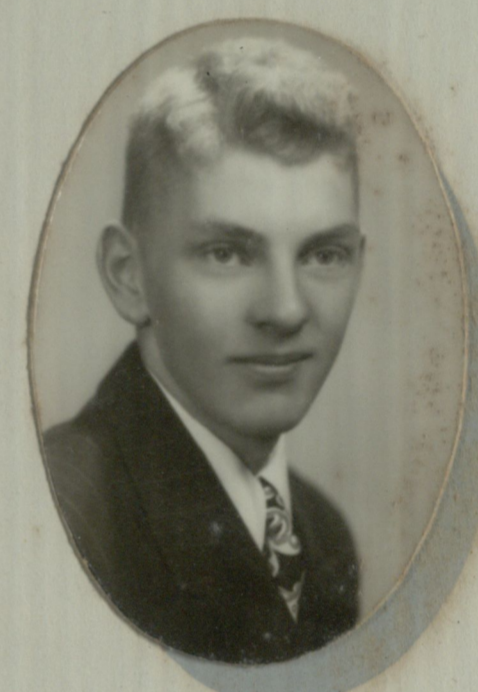
ELMER R. LAMBERT



LORENE STEWART



B. ELEANOR LIESKE



KENNETH H. MASON

1949

# NEW WINCHESTER

## HIGH SCHOOL

CLASS MOTTO  
 WE HAVE CROSSED THE BAY,  
 BUT THE OCEAN LIES BEFORE US.



ANITA RUSSELL  
SEC.



HERSCHEL C. CLARK  
PRES.



DONALD E. LOVE  
VICE-PRES.



MARGARET L. STEELE  
TREAS.



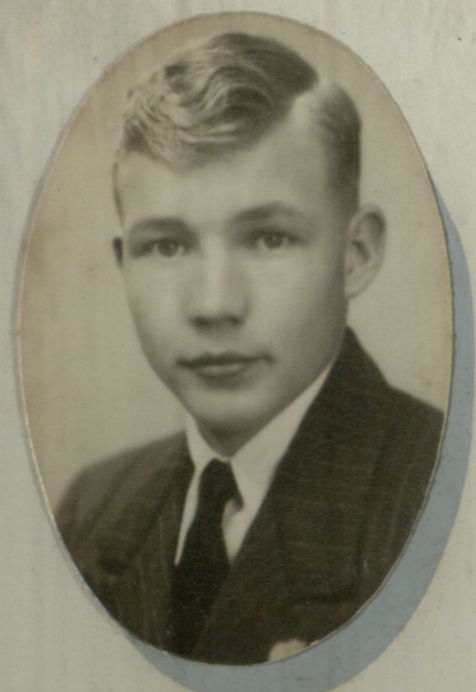
MR. GEORGE NEWELL  
SPONSOR-PRINCIPAL

CLASS FLOWER  
 RED AMERICAN BEAUTY ROSE

CLASS COLORS  
 RED AND SILVER



MARTHA E. CHURCH



S. WAYNE JOHNSON



DORIS E. PARKER



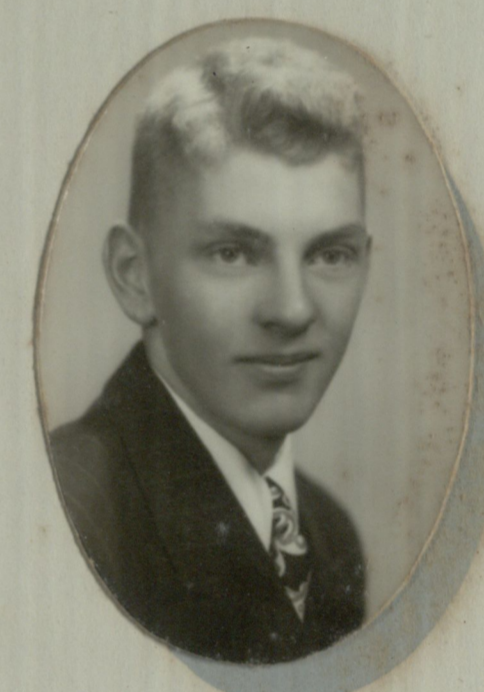
ELMER R. LAMBERT



LORENE STEWART



B. ELEANOR LIESKE



KENNETH H. MASON

1949

**NEW WINCHESTER**

**HIGH SCHOOL**

CLASS MOTTO  
 WE HAVE CROSSED THE BAY,  
 BUT THE OCEAN LIES BEFORE US.



ANITA RUSSELL  
SEC.



HERSCHEL C. CLARK  
PRES.



MR. GEORGE NEWELL  
SPONSOR-PRINCIPAL



DONALD E. LOVE  
VICE-PRES.



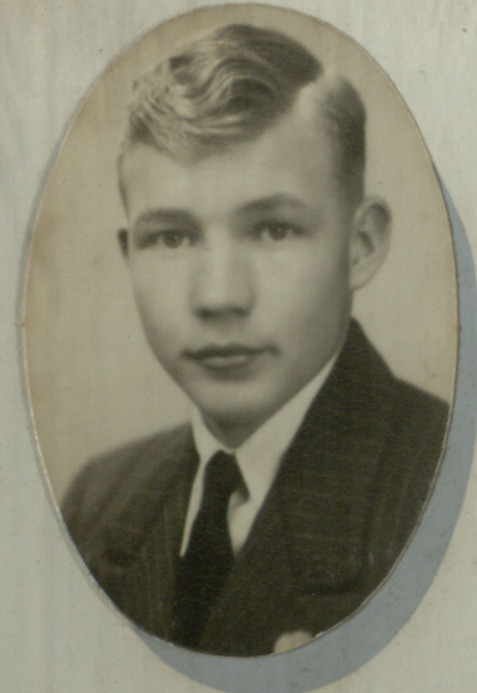
MARGARET L. STEELE  
TREAS.

CLASS FLOWER  
 RED AMERICAN BEAUTY ROSE

CLASS COLORS  
 RED AND SILVER



MARTHA E. CHURCH



S. WAYNE JOHNSON



DORIS E. PARKER



ELMER R. LAMBERT



LORENE STEWART

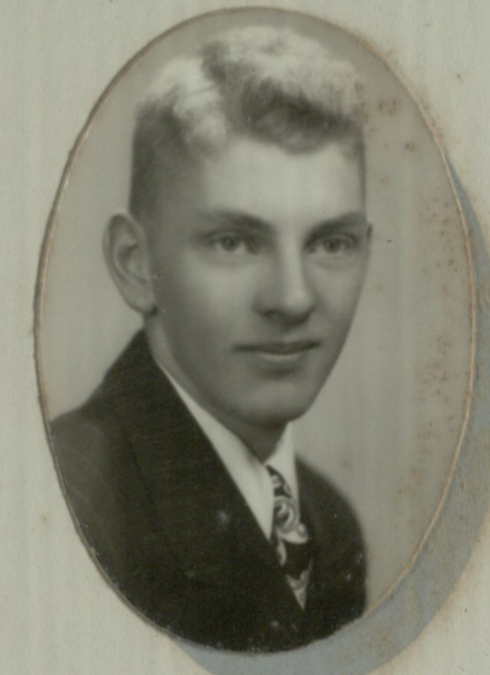
**1949**

**NEW WINCHESTER**

**HIGH SCHOOL**



B. ELEANOR LIESKE



KENNETH H. MASON

CLASS MOTTO  
 WE HAVE CROSSED THE BAY,  
 BUT THE OCEAN LIES BEFORE US.



ANITA RUSSELL  
SEC.



HERSCHEL C. CLARK  
PRES.



MR. GEORGE NEWELL  
SPONSOR-PRINCIPAL



DONALD E. LOVE  
VICE-PRES.



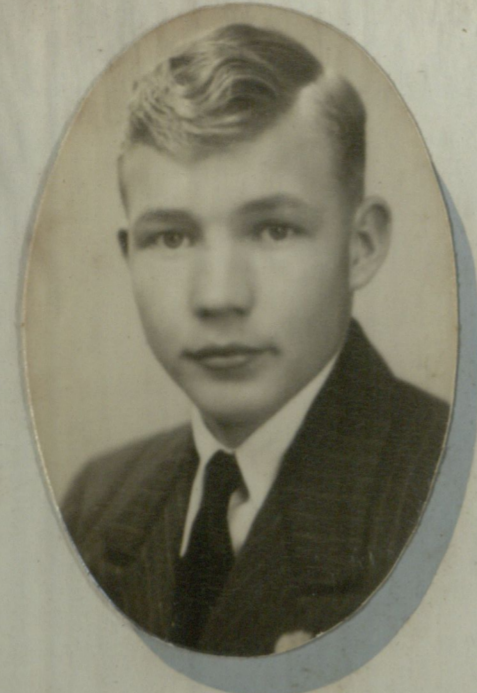
MARGARET L. STEELE  
TREAS.

CLASS FLOWER  
 RED AMERICAN BEAUTY ROSE

CLASS COLORS  
 RED AND SILVER



MARTHA E. CHURCH



S. WAYNE JOHNSON



DORIS E. PARKER



ELMER R. LAMBERT



LORENE STEWART

**1949**

**NEW WINCHESTER**

**HIGH SCHOOL**



B. ELEANOR LIESKE



KENNETH H. MASON

CLASS MOTTO  
 WE HAVE CROSSED THE BAY,  
 BUT THE OCEAN LIES BEFORE US.



ANITA RUSSELL  
SEC.



HERSCHEL C. CLARK  
PRES.



MR. GEORGE NEWELL  
SPONSOR-PRINCIPAL



DONALD E. LOVE  
VICE-PRES.



MARGARET L. STEELE  
TREAS.

CLASS FLOWER  
 RED AMERICAN BEAUTY ROSE

CLASS COLORS  
 RED AND SILVER