

TP. 17 NORTH

TOWNSHIP 16 NORTH

TOWNSHIP 15 NORTH

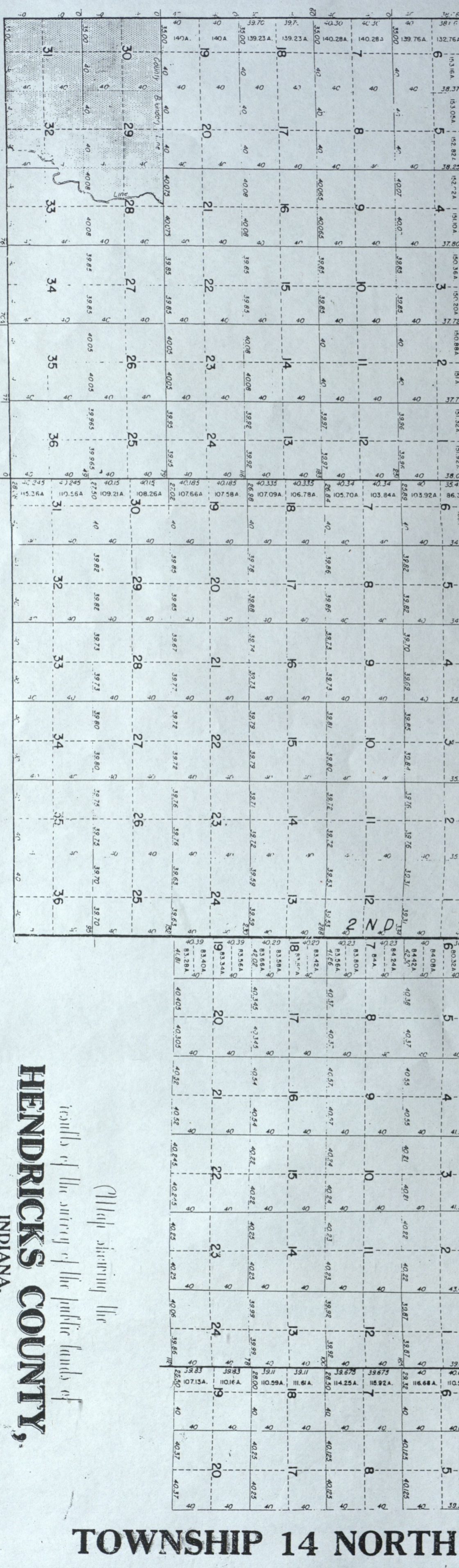
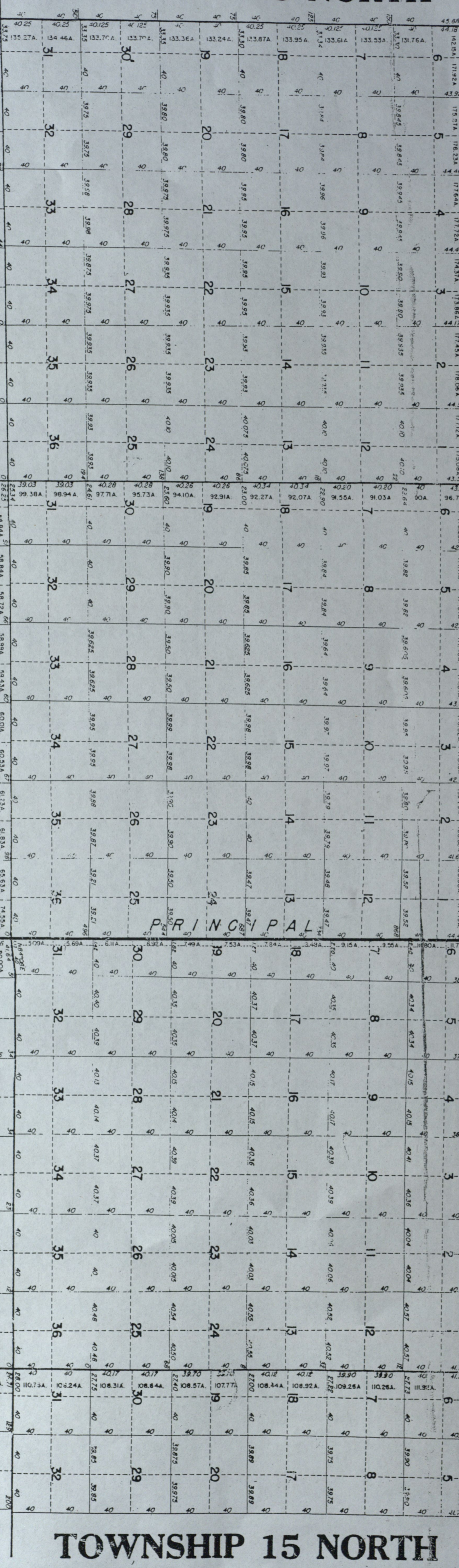
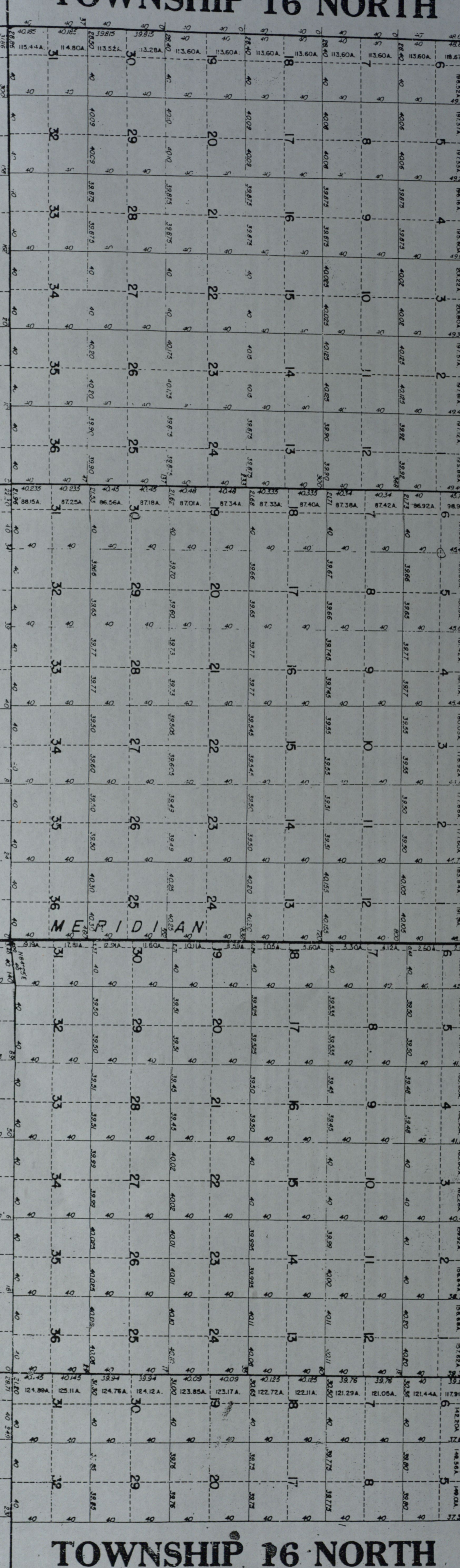
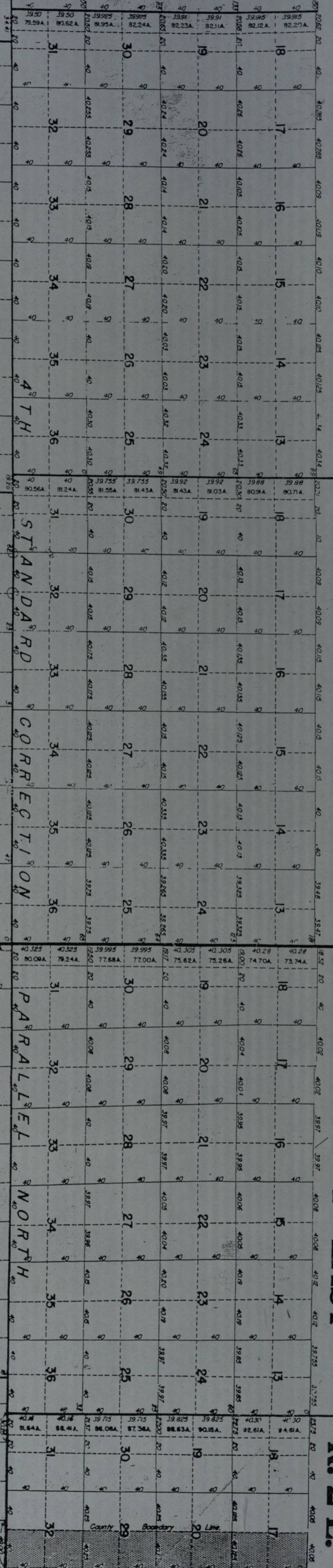
TOWNSHIP 14 NORTH

RANGE 2 WEST

RANGE 1 WEST

RANGE 1 EAST

R. 2 E.



PARALLEL NORTH

MERIDIAN

PRINCIPAL

2ND

STANDARD CORRECTION

4TH

plat showing the  
towns of the survey of the public lands of  
**HENDRICKS COUNTY,**  
INDIANA,

as certified by the J. S. Government from 1819 to 1821.  
R. MAJOR FRANKLIN, SURVEYOR HENDRICKS COUNTY  
DRAWN BY STANLEY M. SHARPLE, DEPUTY SURVEYOR, IN 1944  
2nd EDITION, JAN. 16, 1946.

TP. 17 NORTH

TOWNSHIP 16 NORTH

TOWNSHIP 15 NORTH

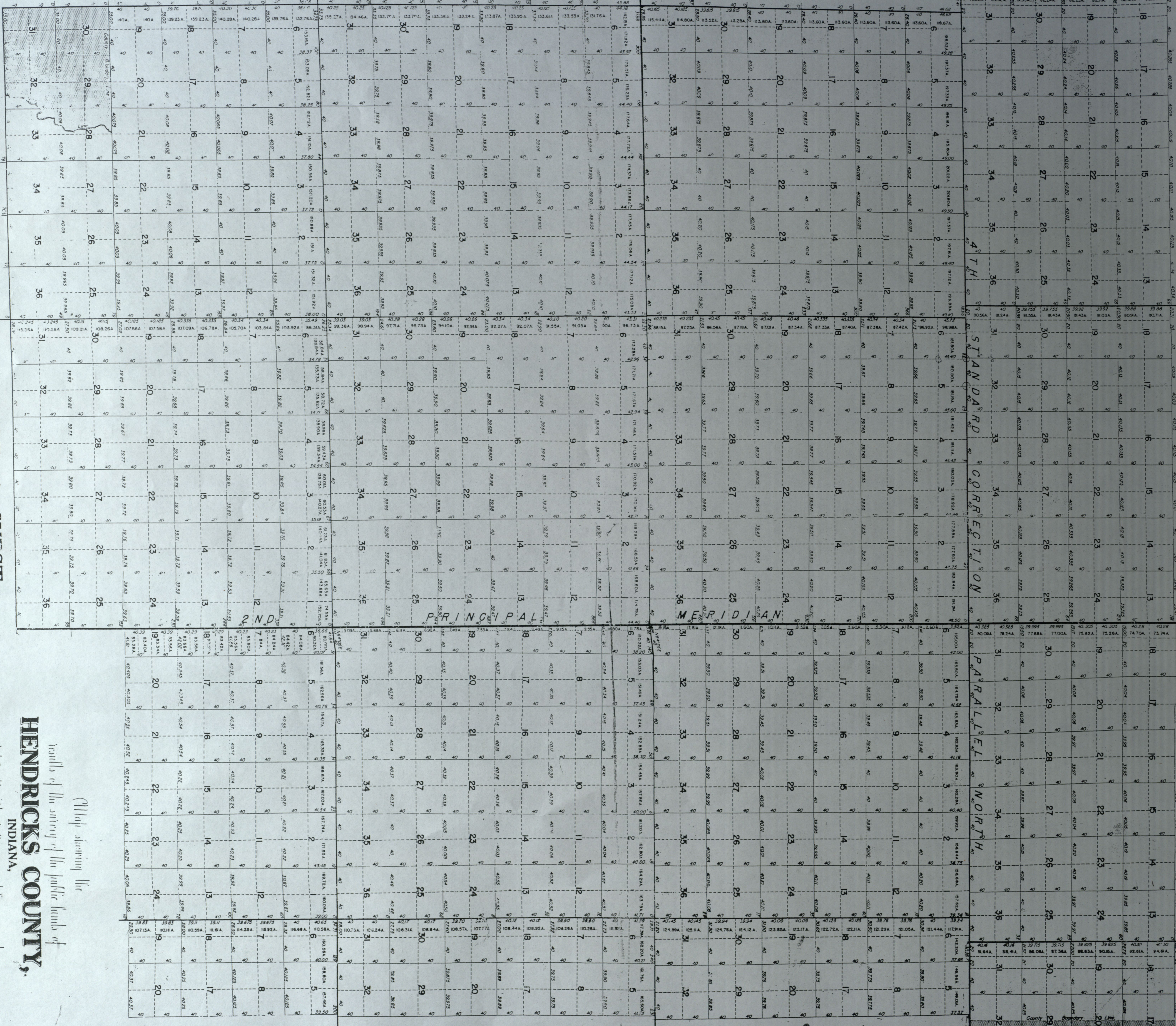
TOWNSHIP 14 NORTH

RANGE 2 WEST

RANGE 1 WEST

RANGE 1 EAST

R. 2 E.



TP. 17 NORTH

TOWNSHIP 16 NORTH

TOWNSHIP 15 NORTH

TOWNSHIP 14 NORTH

RANGE 2 WEST

RANGE 1 WEST

**HENDRICKS COUNTY,**  
INDIANA,

Map showing the  
contours of the survey of the public lands of

as provided by the U. S. Government from 1819 to 1824

R. MAJOR FRANKLIN, SURVEYOR HENDRICKS COUNTY  
DRAWN BY STANLEY M. SHARTLE, DEPUTY SURVEYOR, IN 1944

2nd EDITION, JAN. 16, 1946.