

5-A

STILESVILLE

ADDITION		PAGE
ORIGINAL TOWN	lots 1 to 6 & 37 to 41 inclusive.....	30
ORIGINAL TOWN	lots 17 to 26 inclusive.....	31
ORIGINAL TOWN	lots 42 to 45 & 76 to 79 inclusive.....	32
ORIGINAL TOWN	lots 51 to 55 & 66 to 70 inclusive.....	33
ORIGINAL TOWN	lots 56 to 65 inclusive.....	34
ORIGINAL TOWN	(lots 46 to 50 & 71 to 75 inclusive (sheet 1).....	35
	(lots 80 & 81 (sheet 2).....	35
ORIGINAL TOWN	lots 12 to 16 & 27 to 31 inclusive.....	36
ORIGINAL TOWN	lots 7 to 11 & 32 to 36 inclusive.....	37
ROBARD'S	lots 1 to 6 inclusive.....	38
ALEXANDER'S	lots 1 to 27 inclusive.....	39
ALEXANDER'S	lots 28 to 32 inclusive.....	40
WILCOX'S	lots 110 to 112 & 82 to 85 inclusive.....	41
WILCOX'S	lots 86 to 91 & 113 to 118 inclusive.....	42
WILCOX'S	lots 99 to 104 & 126 to 131 inclusive.....	43
WILCOX'S	lots 105 to 109 & 132 to 136 inclusive.....	44
WILCOX'S	(lots 92 to 95 & 119 to 123 inclusive (sheet 1)....	45
	(lots 96 to 98 & 124 & 125 inclusive ( sheet 2)....	45
KELLER & WILCOX'S	lots 1 to 9 inclusive.....	46
SECTIONS		
PART NORTHEAST QUARTER 21-14-2W .....		47
PART NORTHWEST QUARTER 22-14-2W .....		48
PART SOUTHEAST QUARTER 21-14-2W.....		49
PART SOUTHWEST QUARTER 22-14-2W .....		50

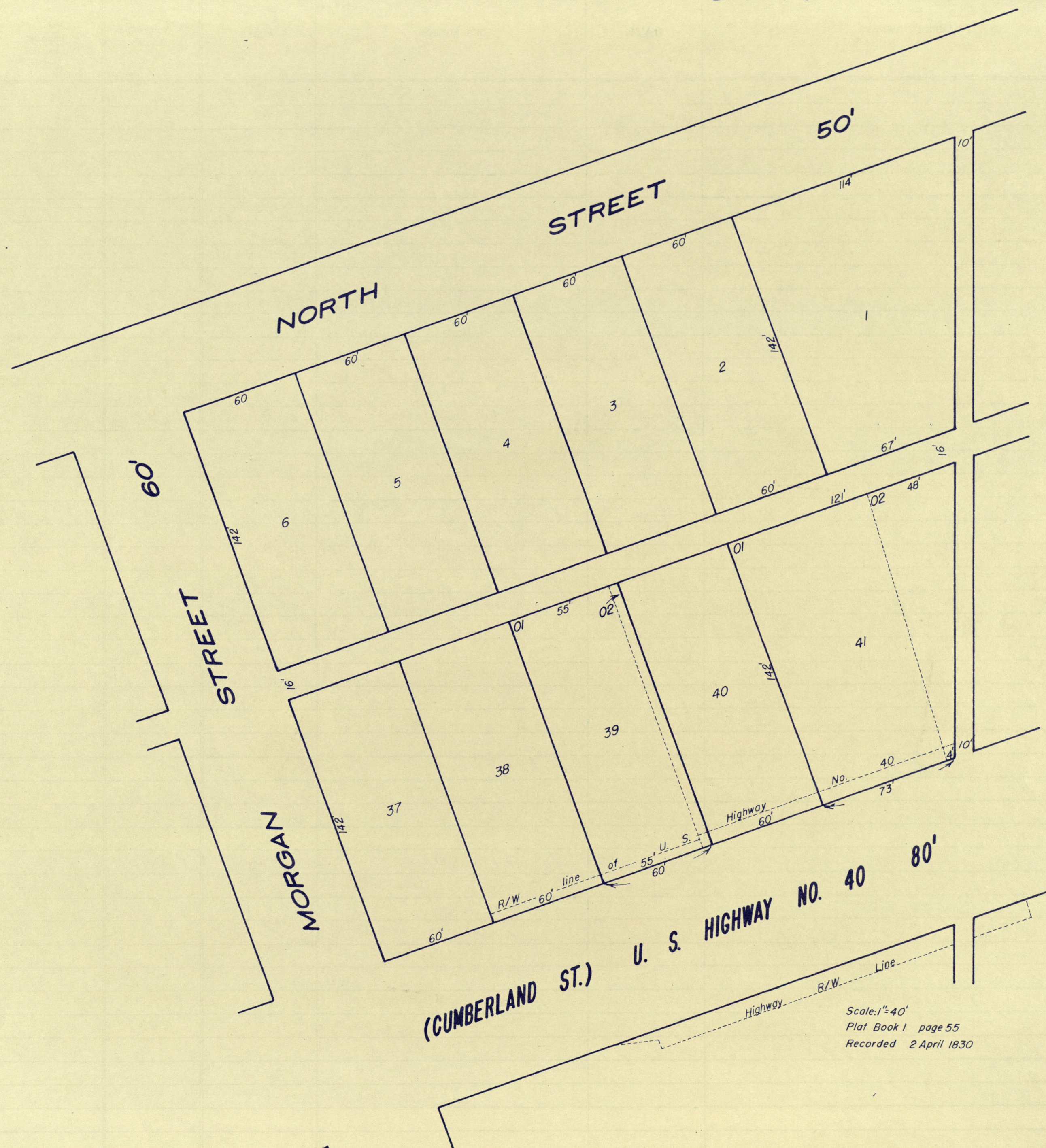
SCALE AS INDICATED ON PLATS

MILL CREEK MEADOWS

51

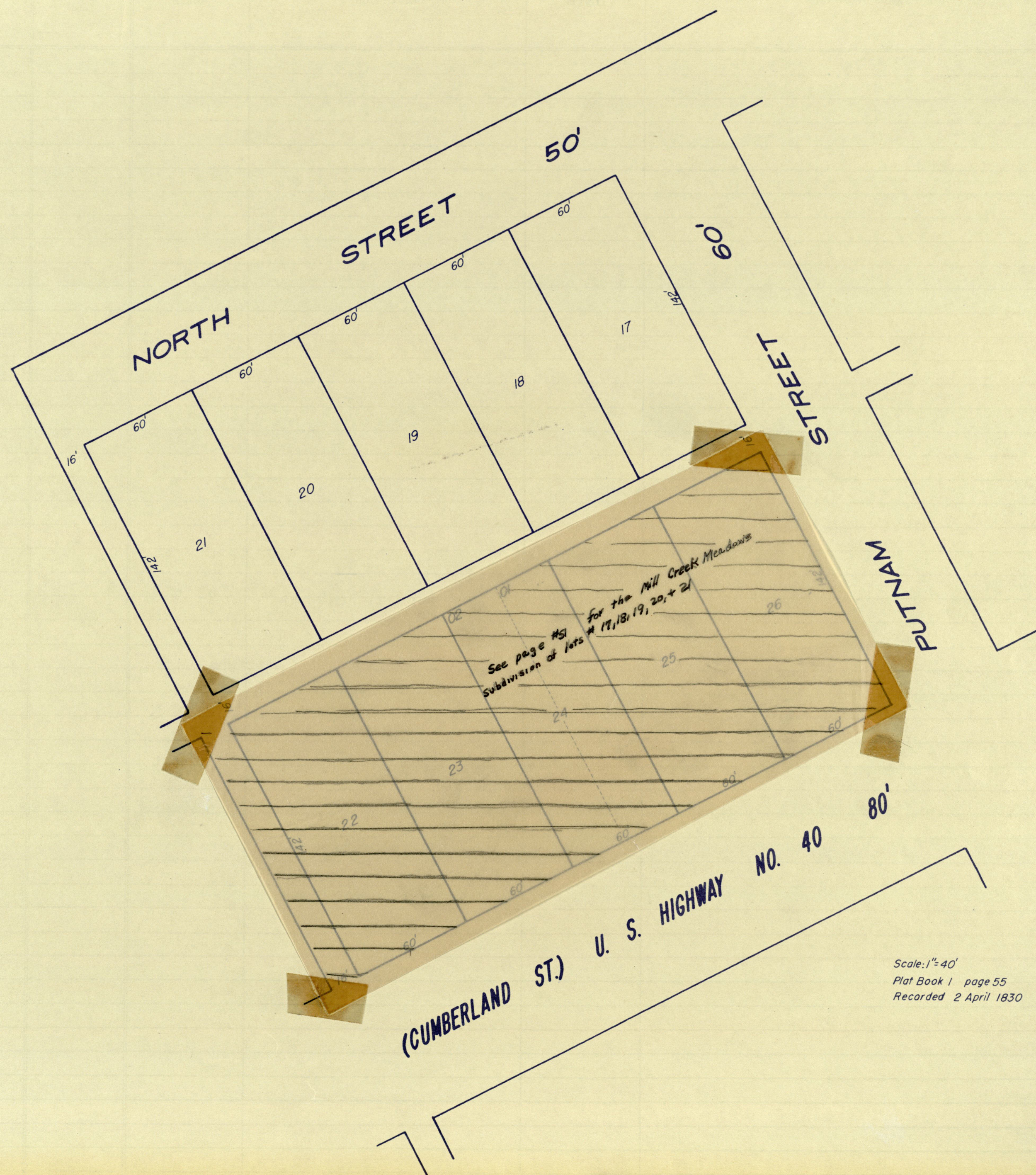


*ORIGINAL TOWN*



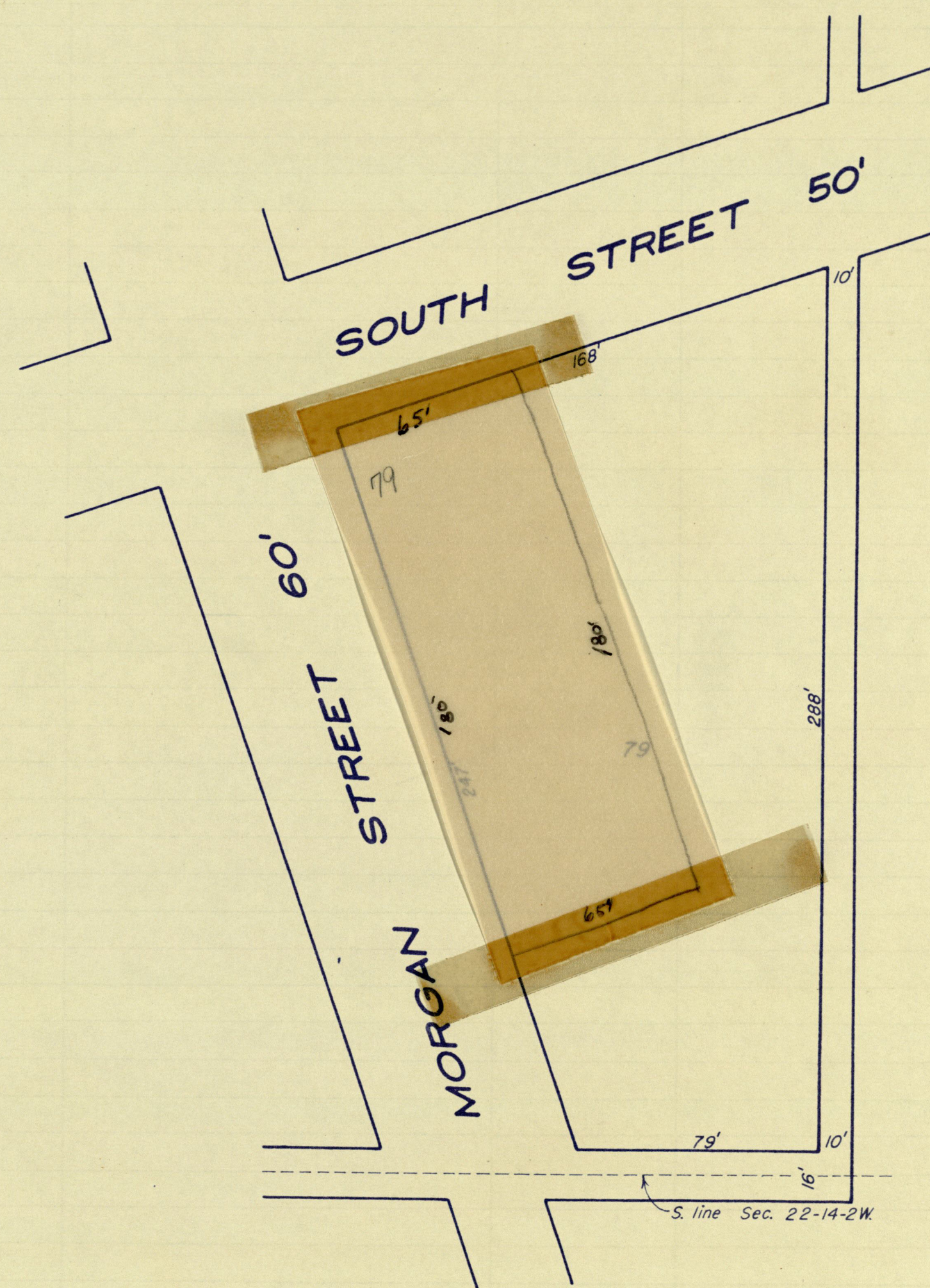


# ORIGINAL TOWN





*ORIGINAL TOWN*

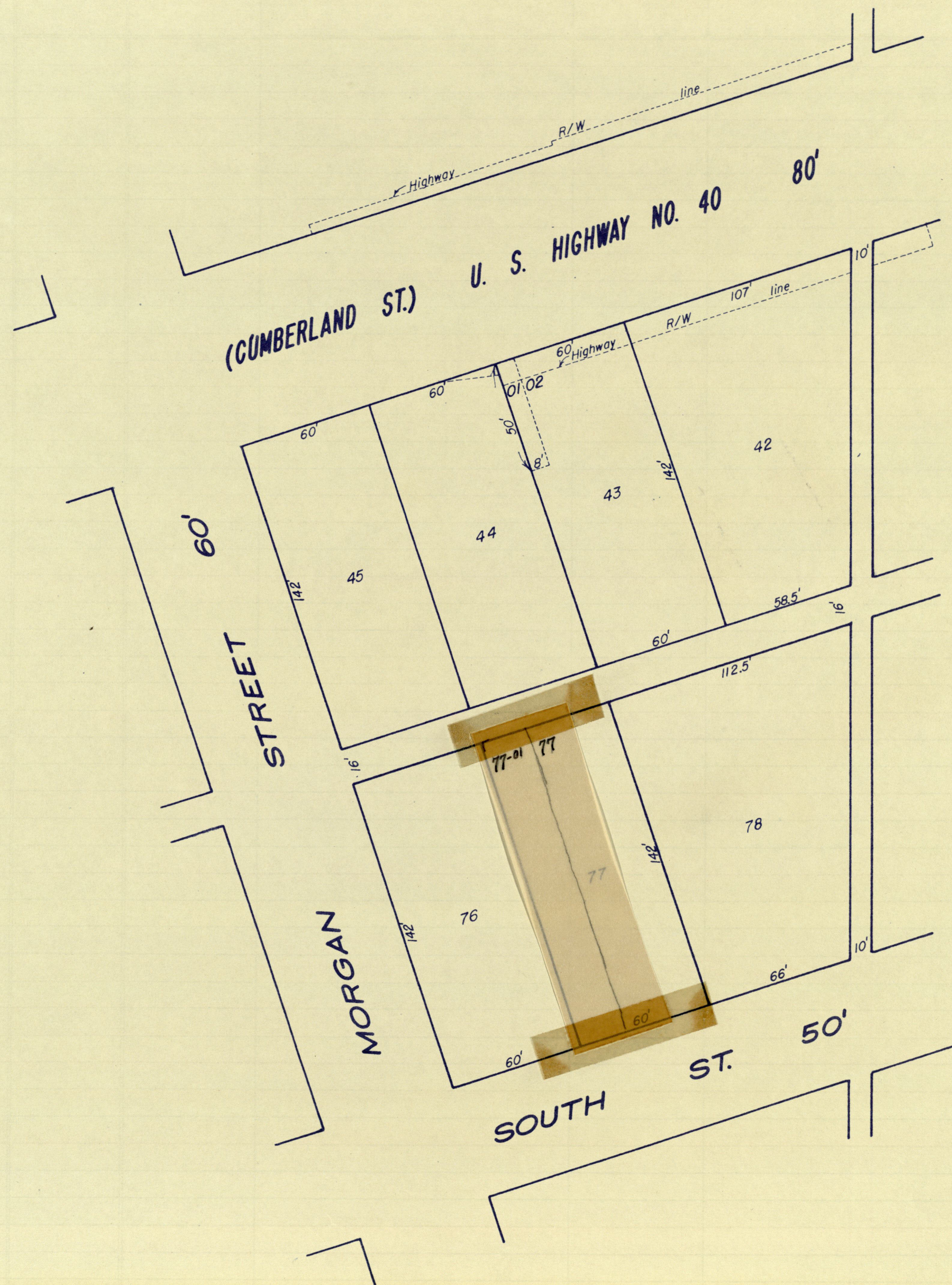


Scale: 1" = 40'  
Plat Book 1 page 55  
Recorded 2 April 1830



*TOWN*

SHEET 2 OF 2.

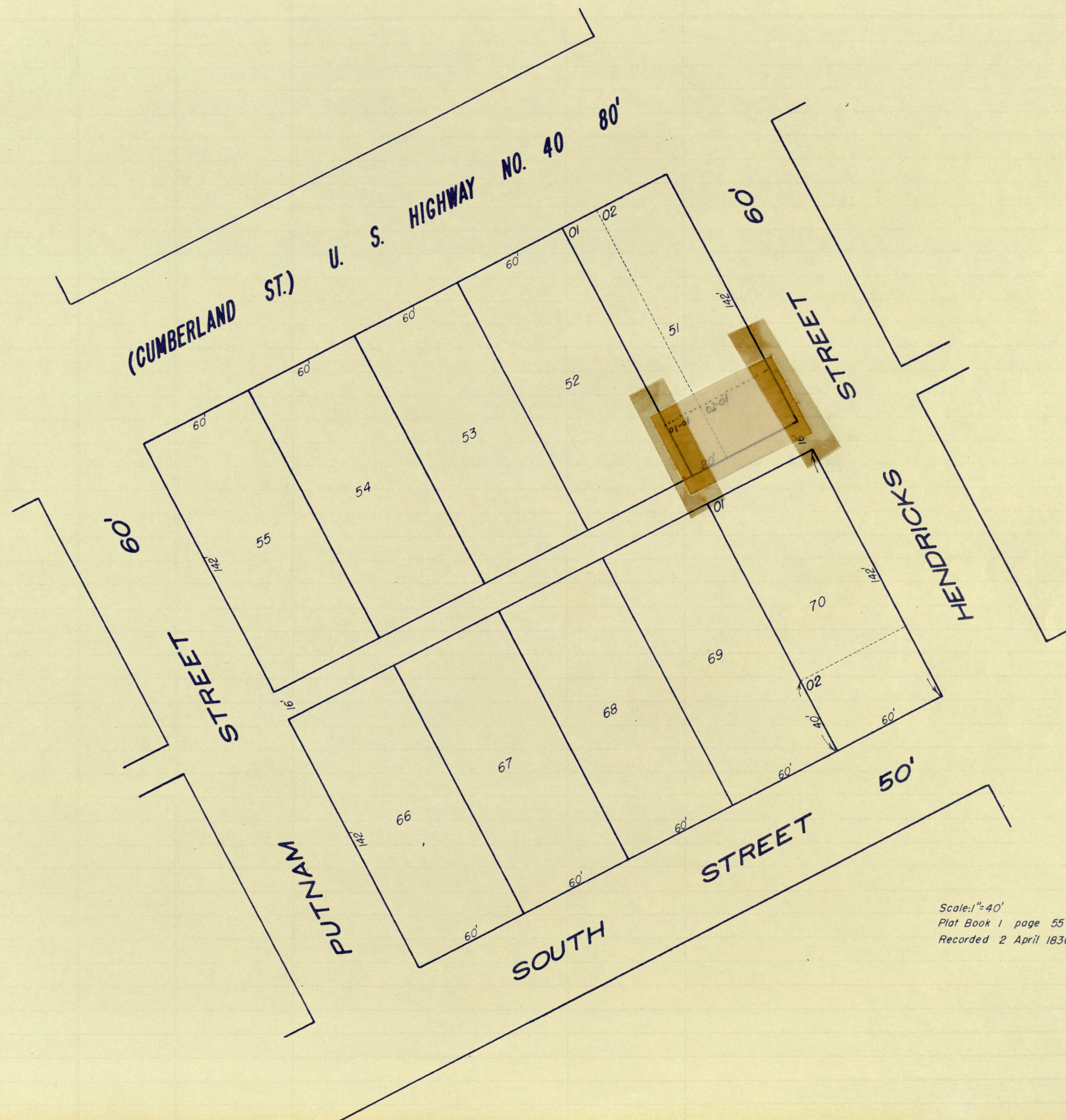


*Recorded 2 April 1830*

3730



*ORIGINAL TOWN*



Scale: 1"=40'  
Plat Book 1 page 55  
Recorded 2 April 1830

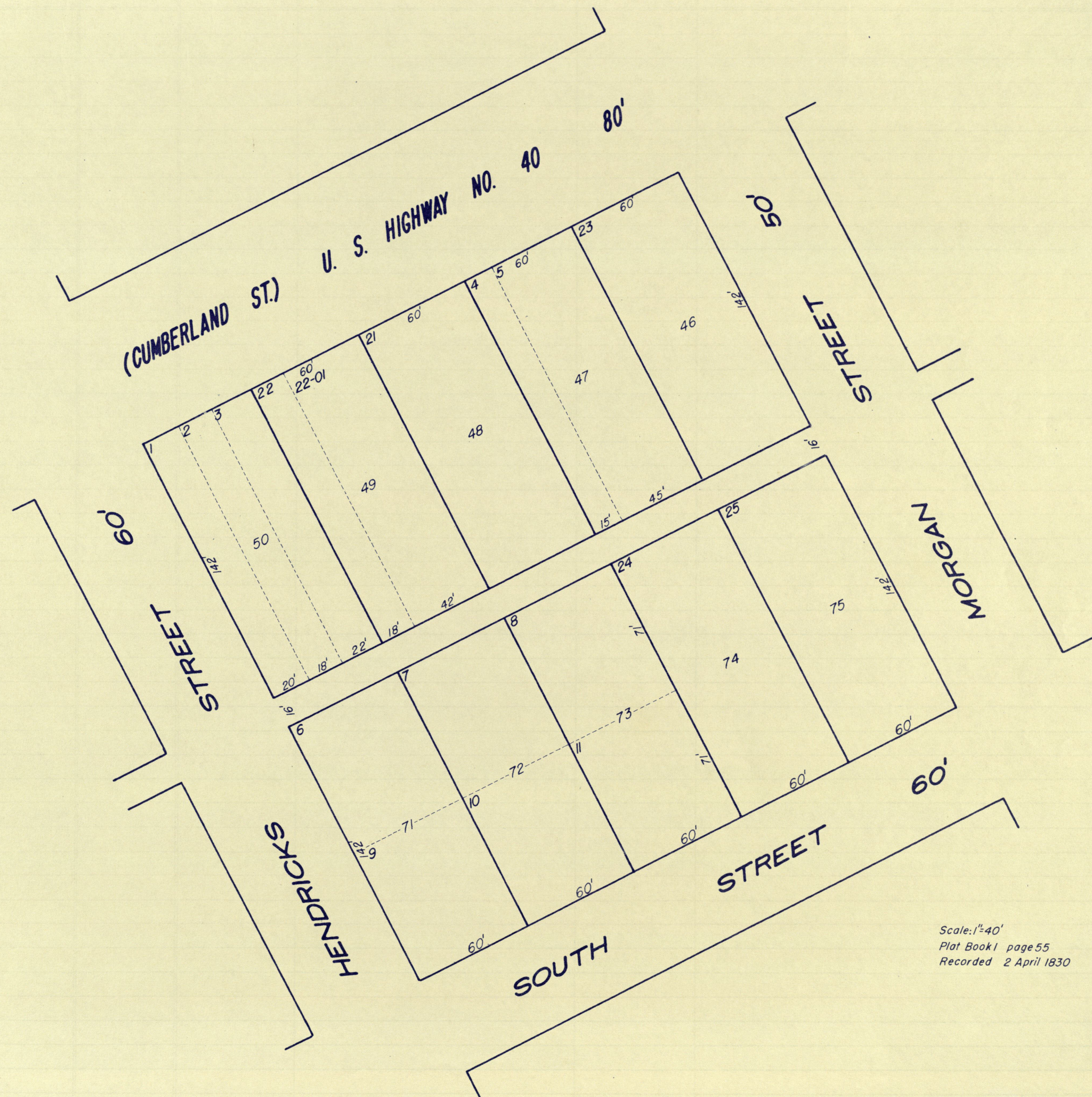






# ORIGINAL TOWN

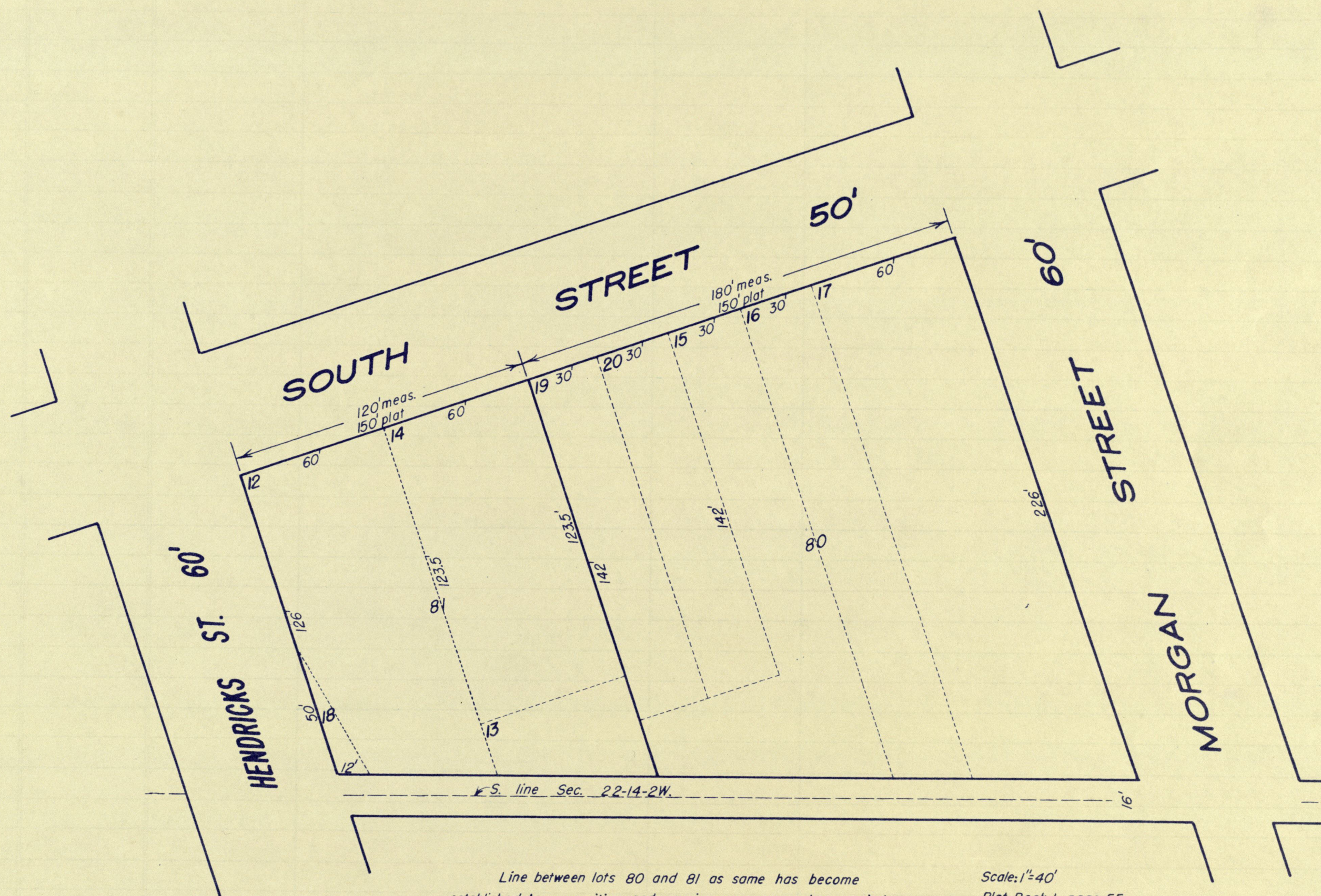
PART OF PAGE  
35  
SHEET 1 OF 2.



Scale: 1"=40'  
Plat Book 1 page 55  
Recorded 2 April 1830



# ORIGINAL TOWN

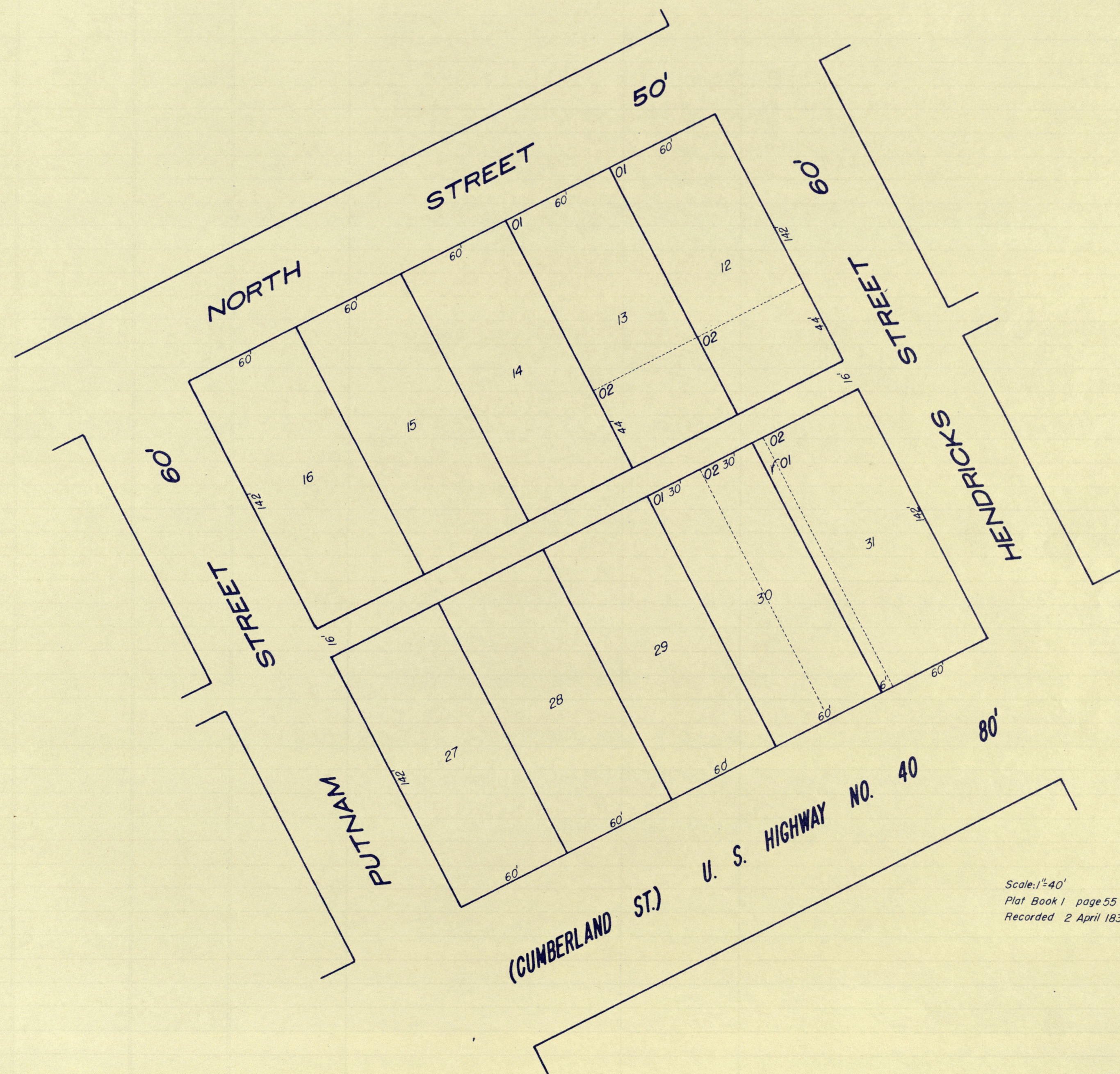


Line between lots 80 and 81 as same has become established by recognition and acquiescence over a long period of time, irrespective of its location as fixed by the plat of the Original Town.

Scale: 1"=40'  
Plat Book 1 page 55  
Recorded 2 April 1830



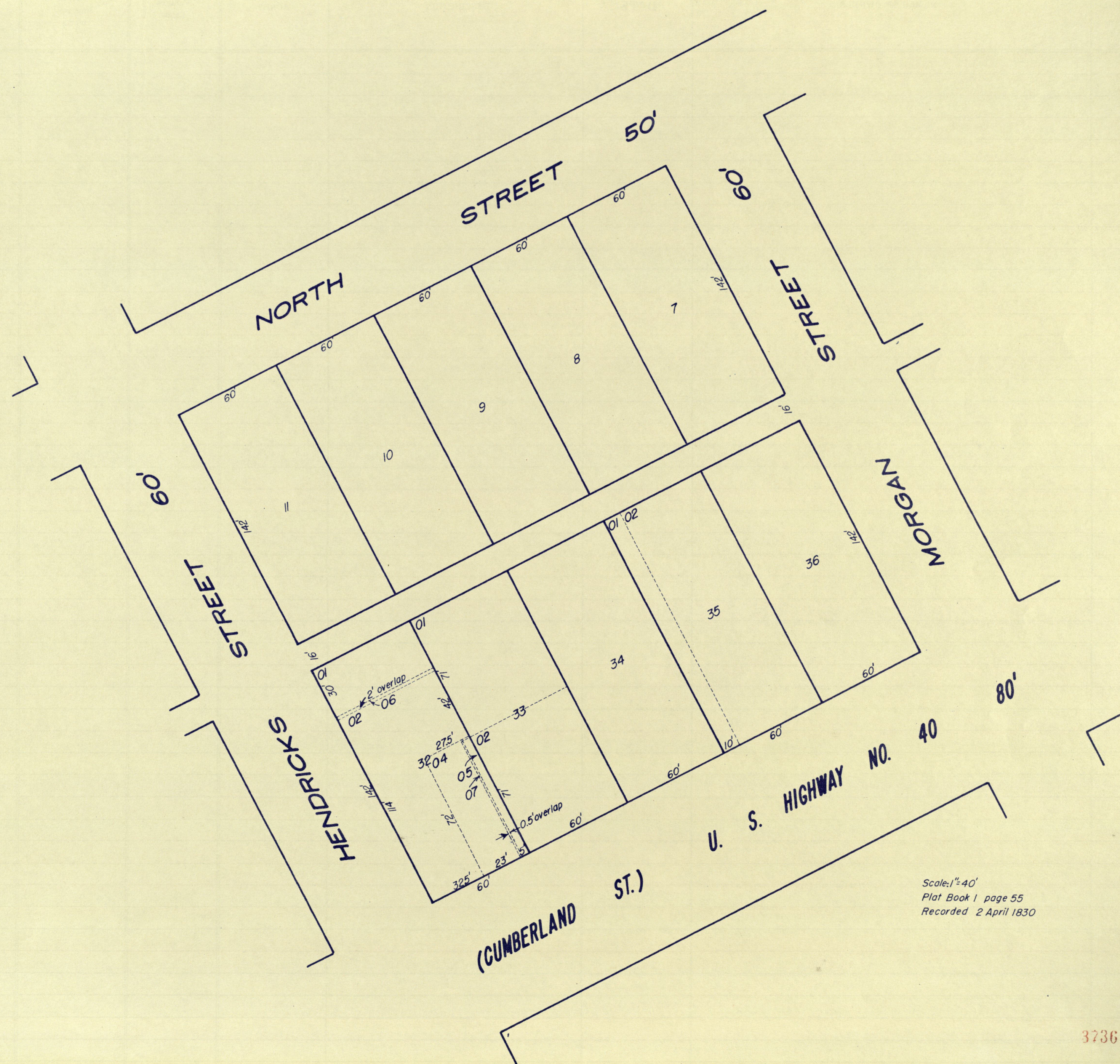
## ORIGINAL TOWN



Scale: 1" = 40'  
Plat Book 1 page 55  
Recorded 2 April 1830

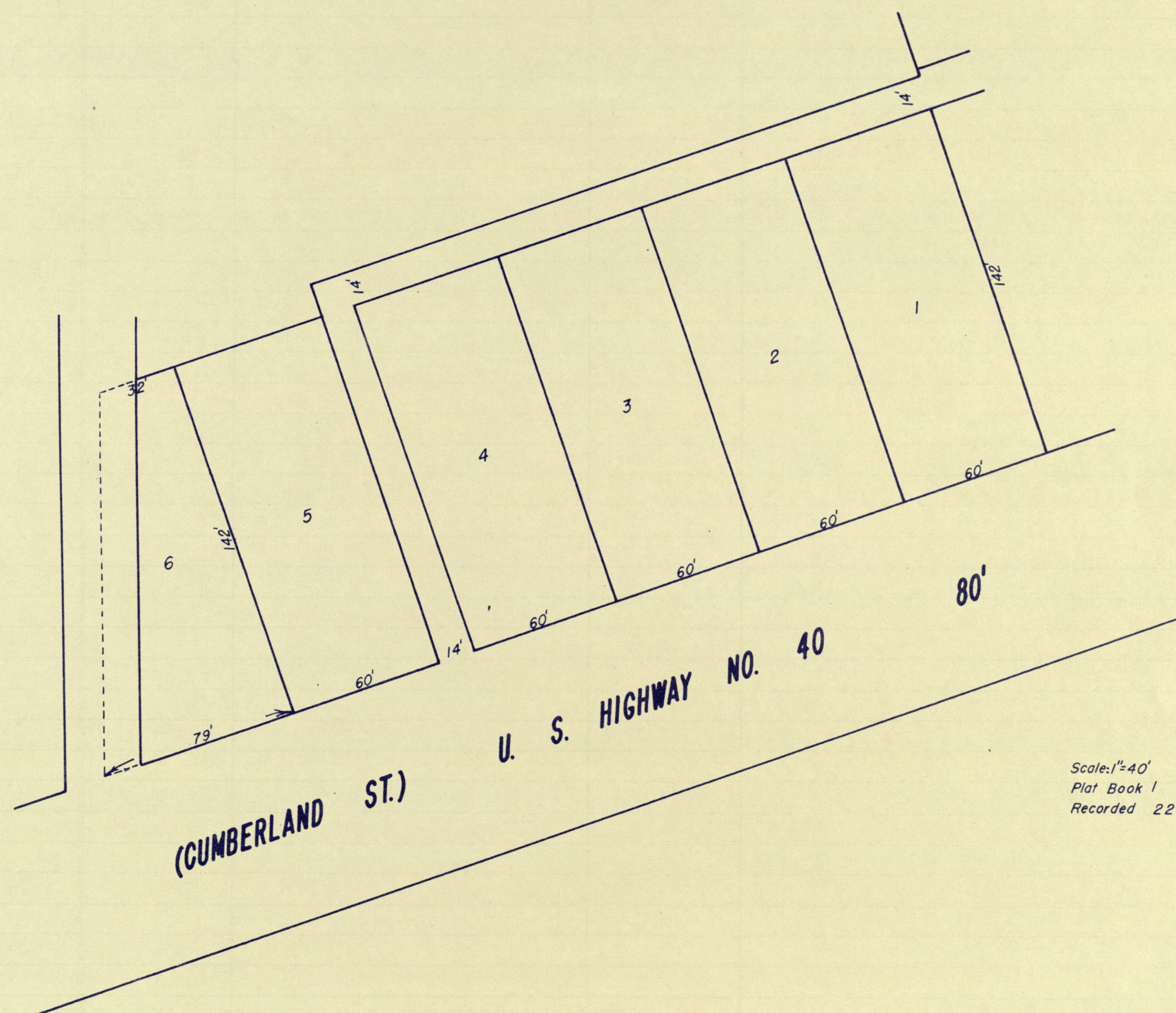


## ORIGINAL TOWN





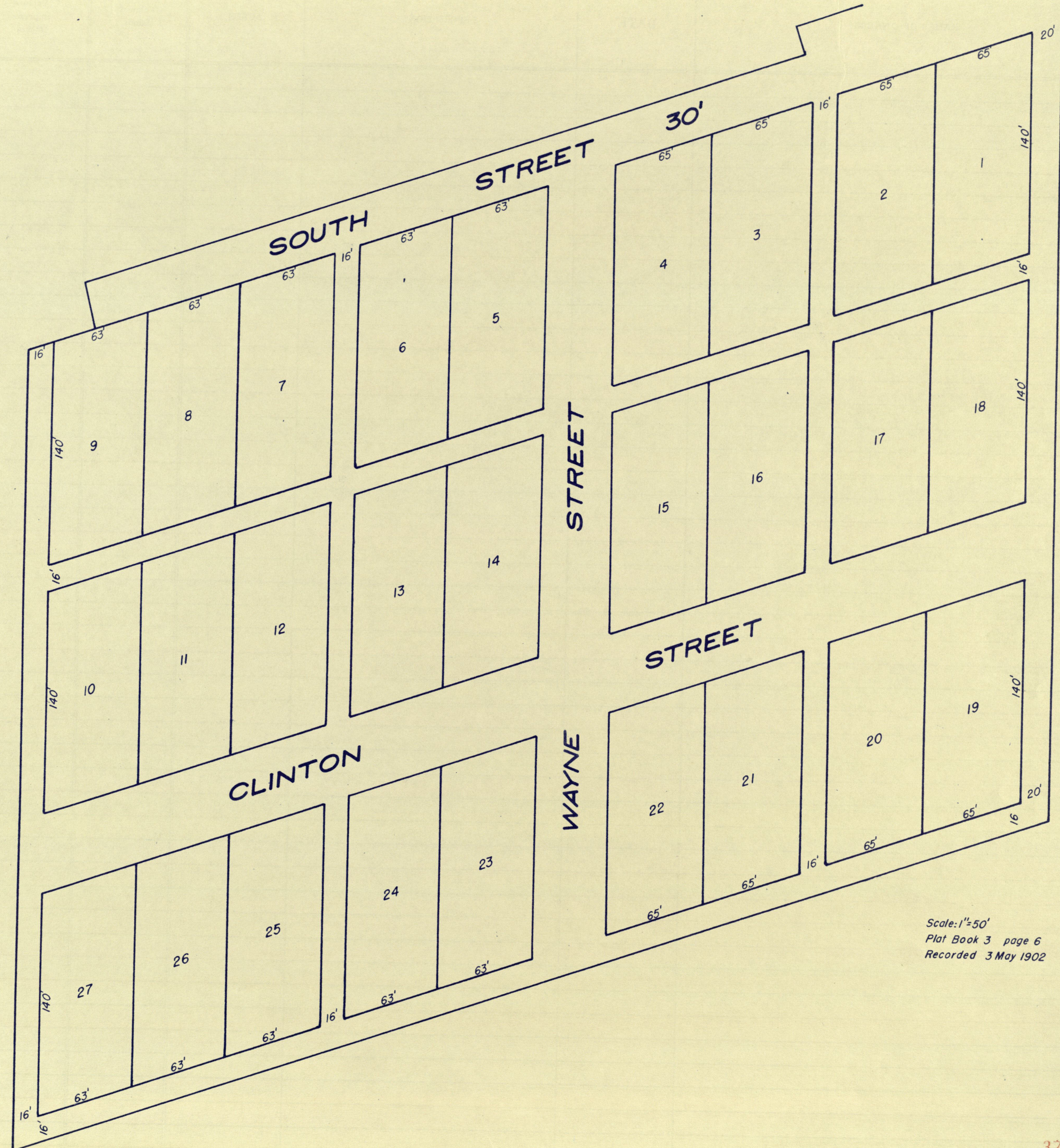
*ROBARD'S ADD.*



Scale: 1"=40'  
Plat Book 1 page 45  
Recorded 22 November 1869



# ALEXANDER'S ADD.



Scale: 1"=50'  
 Plat Book 3 page 6  
 Recorded 3 May 1902



SECTION.....TOWNSHIP.....RANGE.....HENDRICKS COUNTY, INDIANA, 19.....

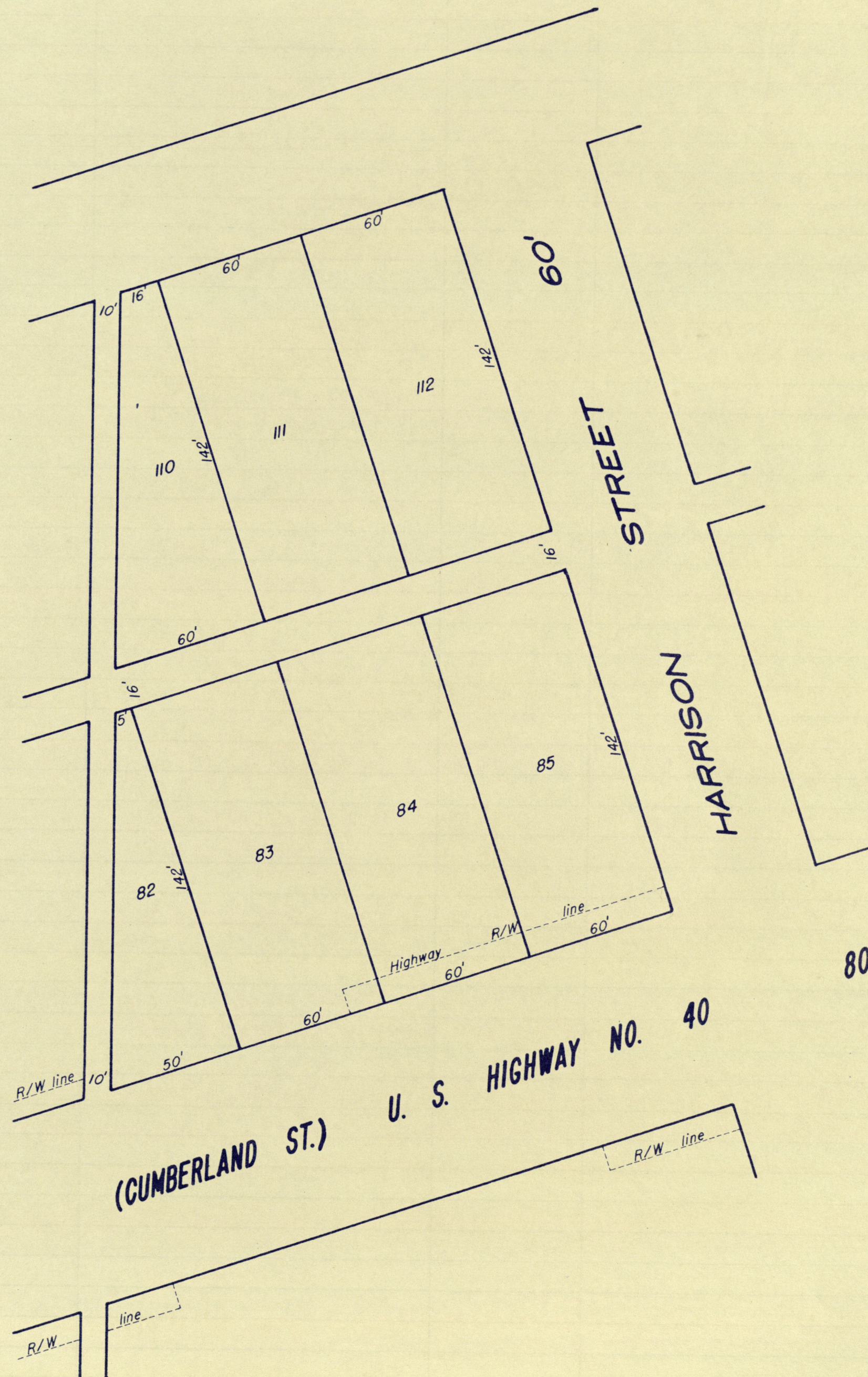
Form by Stanley Shartle

Assessor's Plat-Book for ..... Township

[illegible]



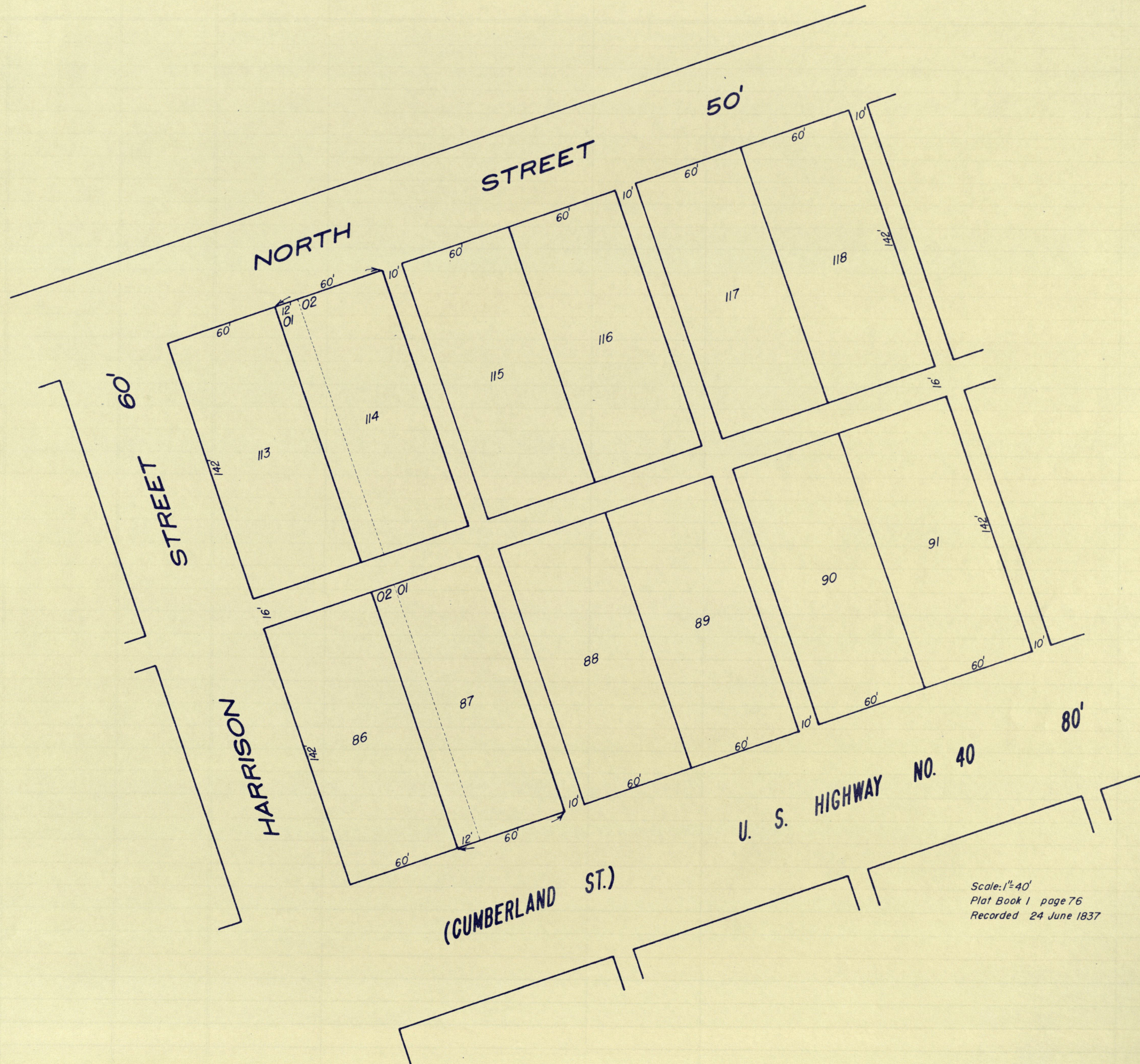
# WILCOX'S ADD.



Scale: 1"=40'  
 Plat Book 1 page 76  
 Recorded 24 June 1837



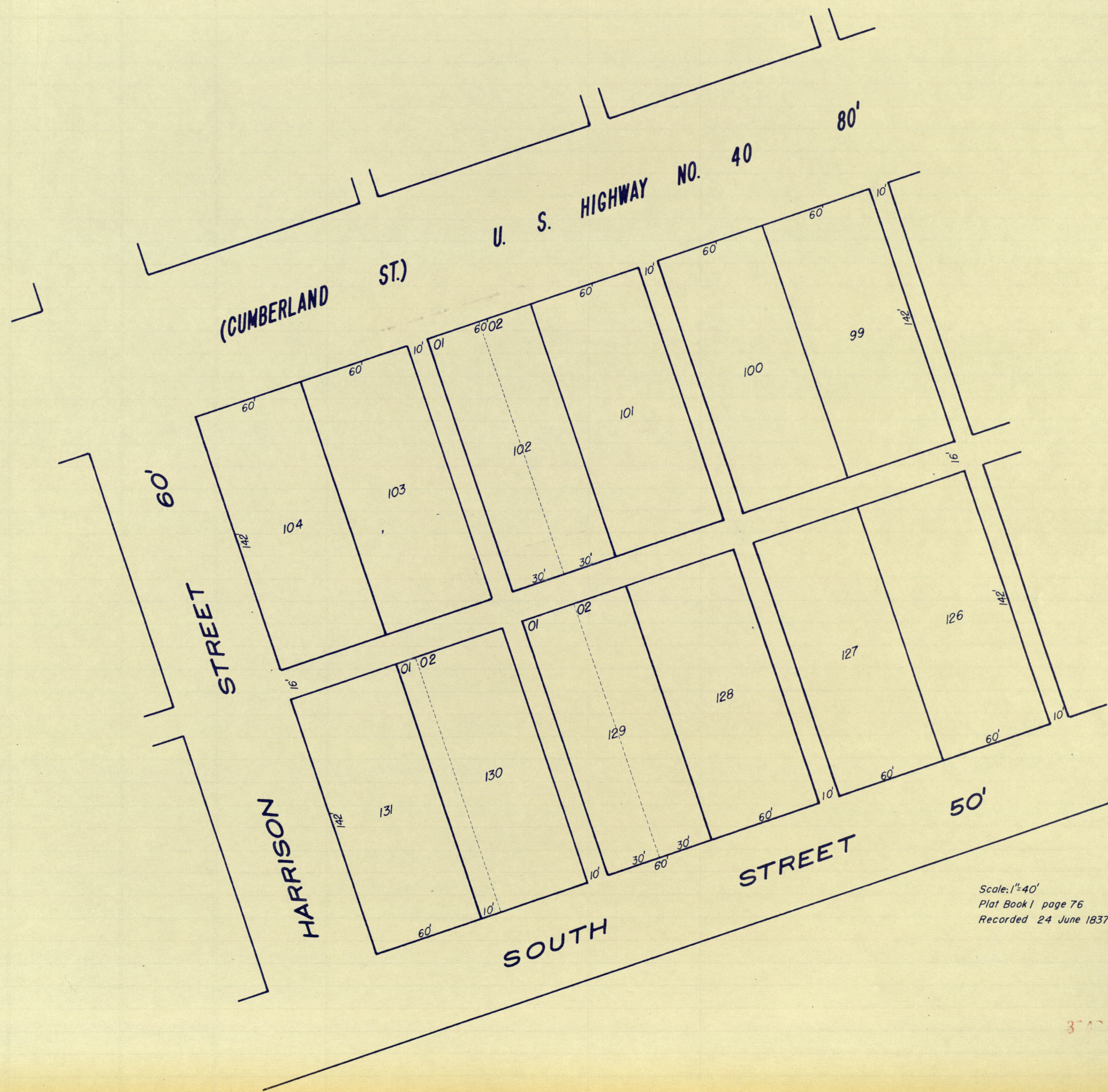
# WILCOX'S ADD.



Scale: 1"=40'  
 Plat Book 1 page 76  
 Recorded 24 June 1837



# WILCOX'S ADD.



Scale: 1"=40'  
 Plat Book 1 page 76  
 Recorded 24 June 1837

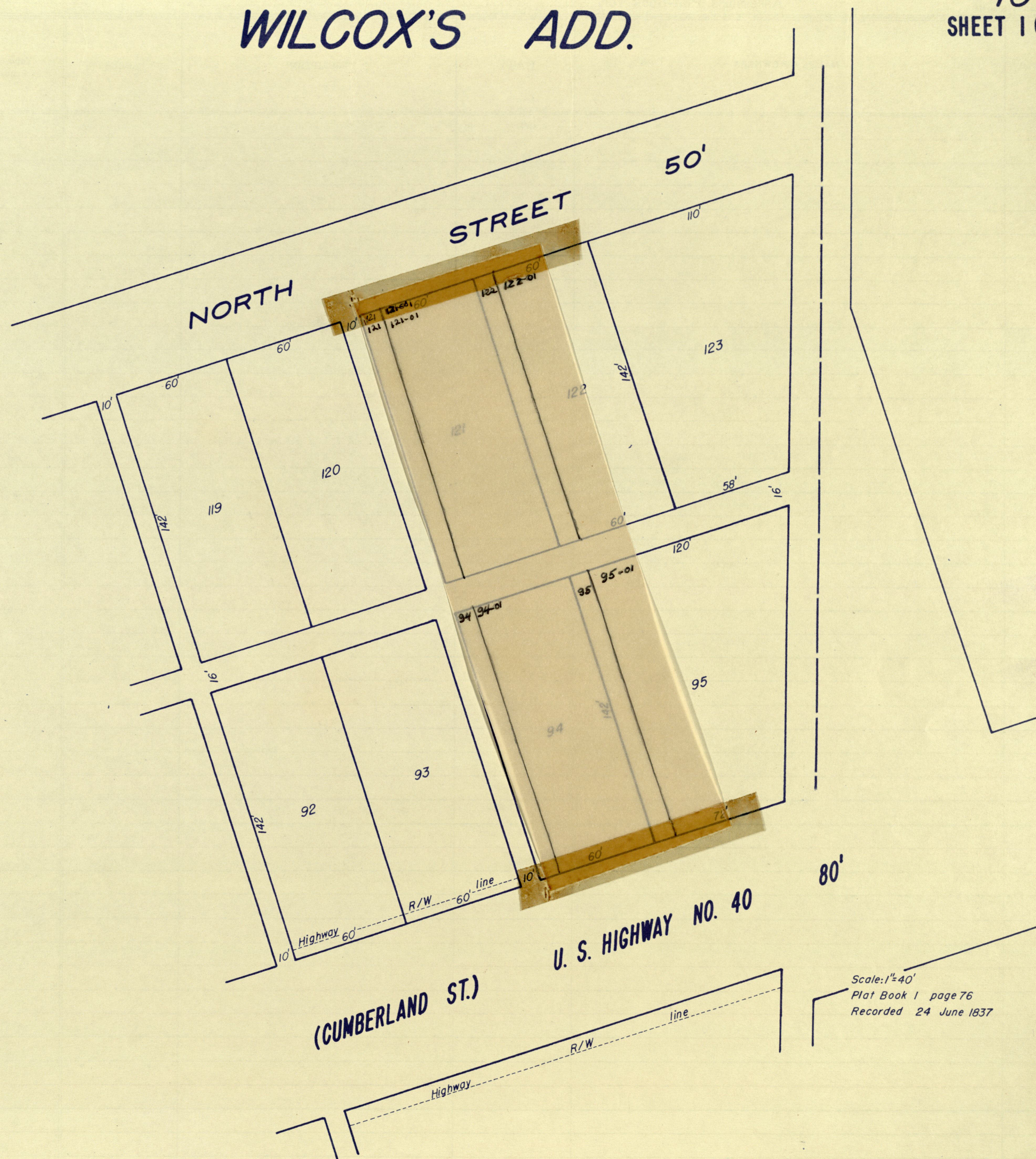






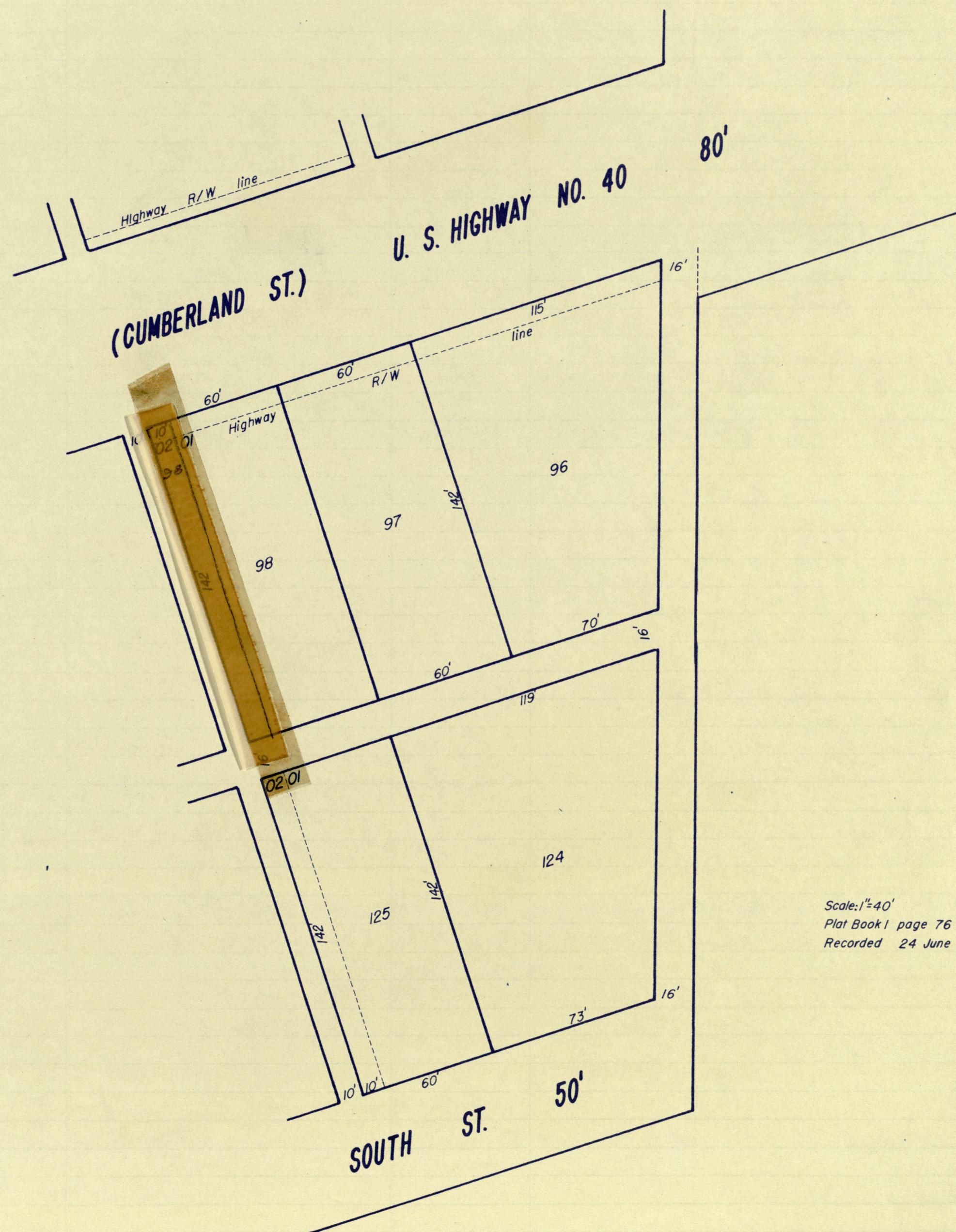
# WILCOX'S ADD.

PART OF PAGE  
45  
SHEET 1 OF 2.





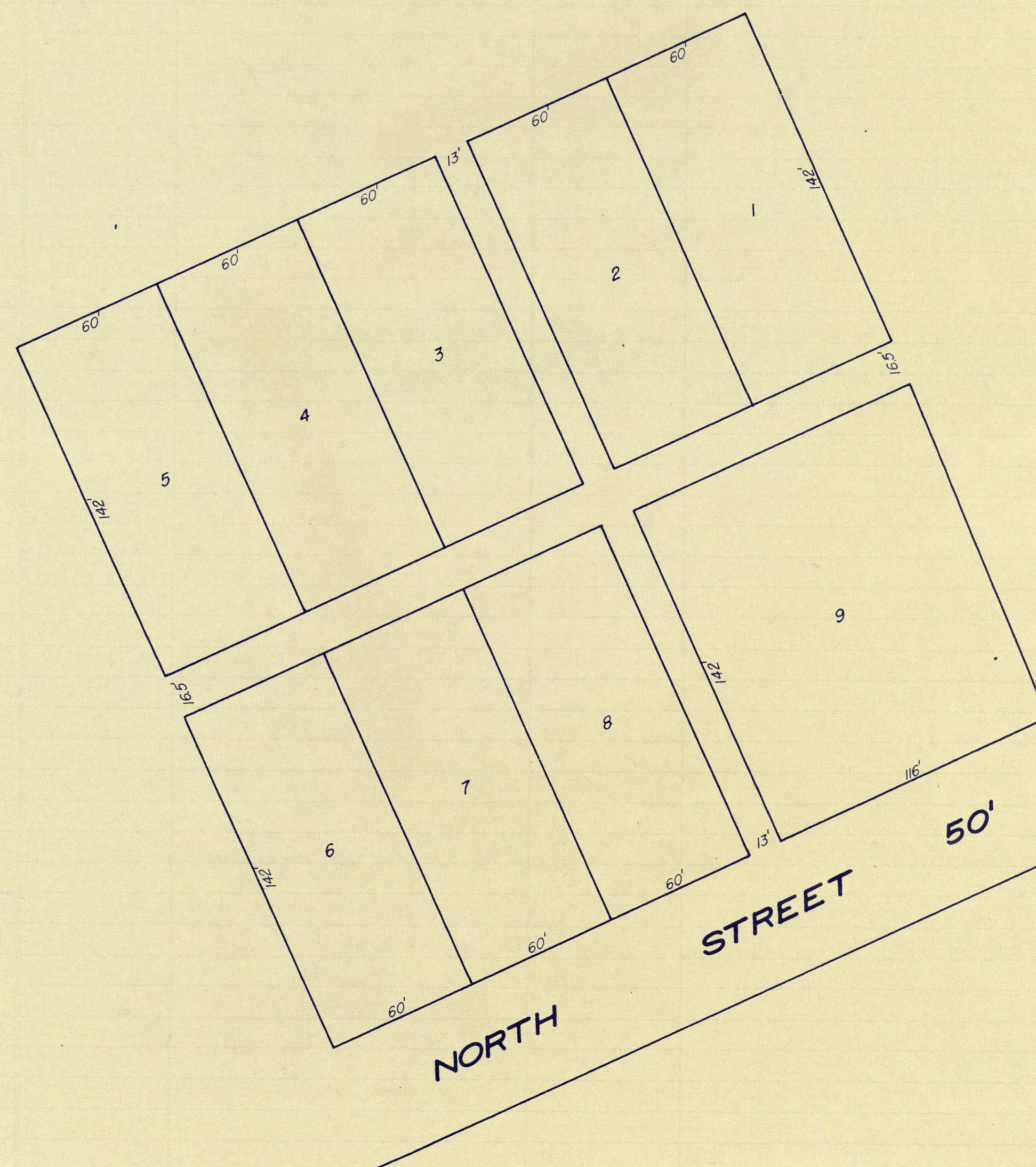
# WILCOX'S ADD.



Scale: 1"=40'  
Plat Book 1 page 76  
Recorded 24 June 1837



# KELLER & WILCOX'S ADD

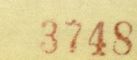


Scale: 1" = 40'  
Plat Book 1 page 73  
Recorded 14 July 1836



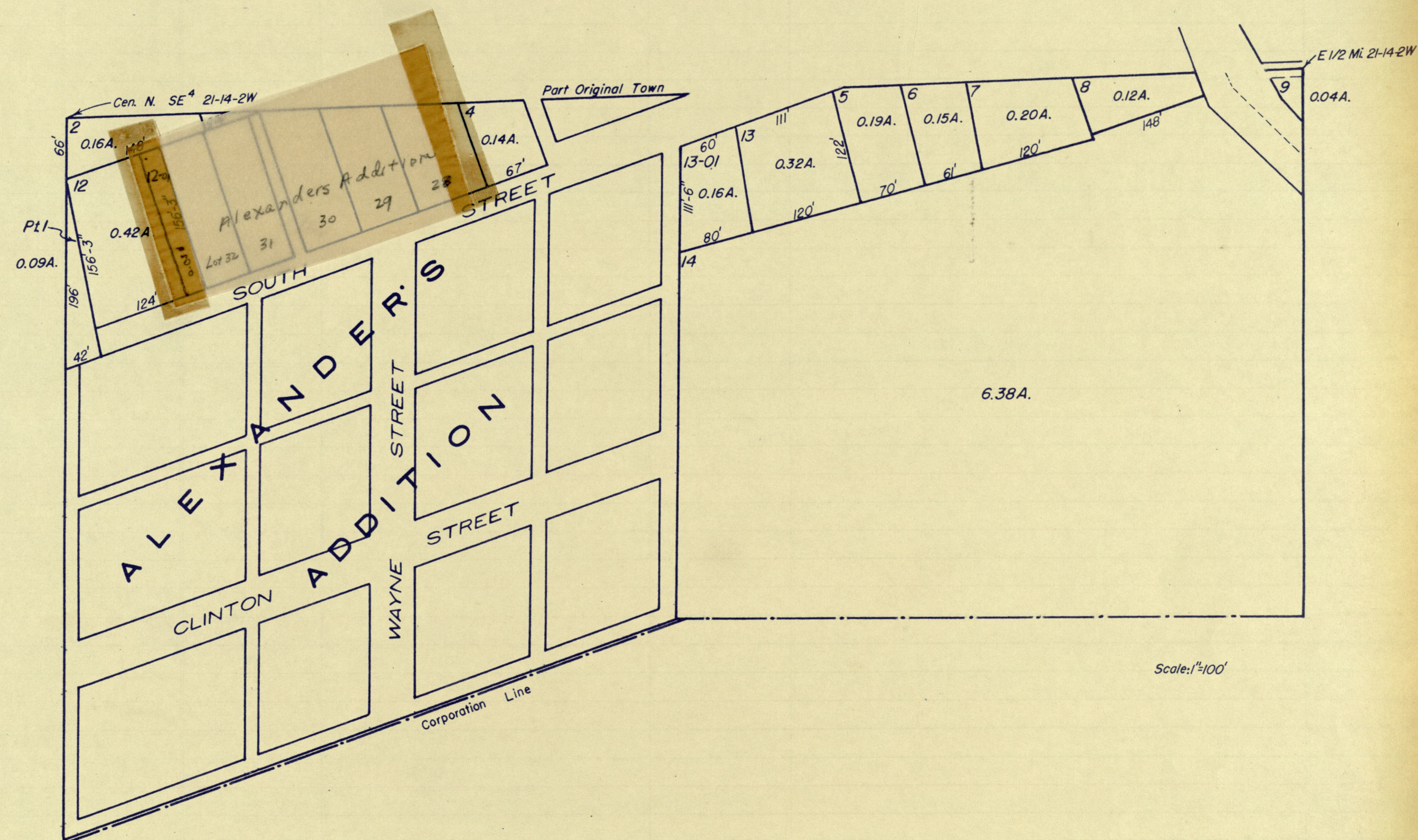






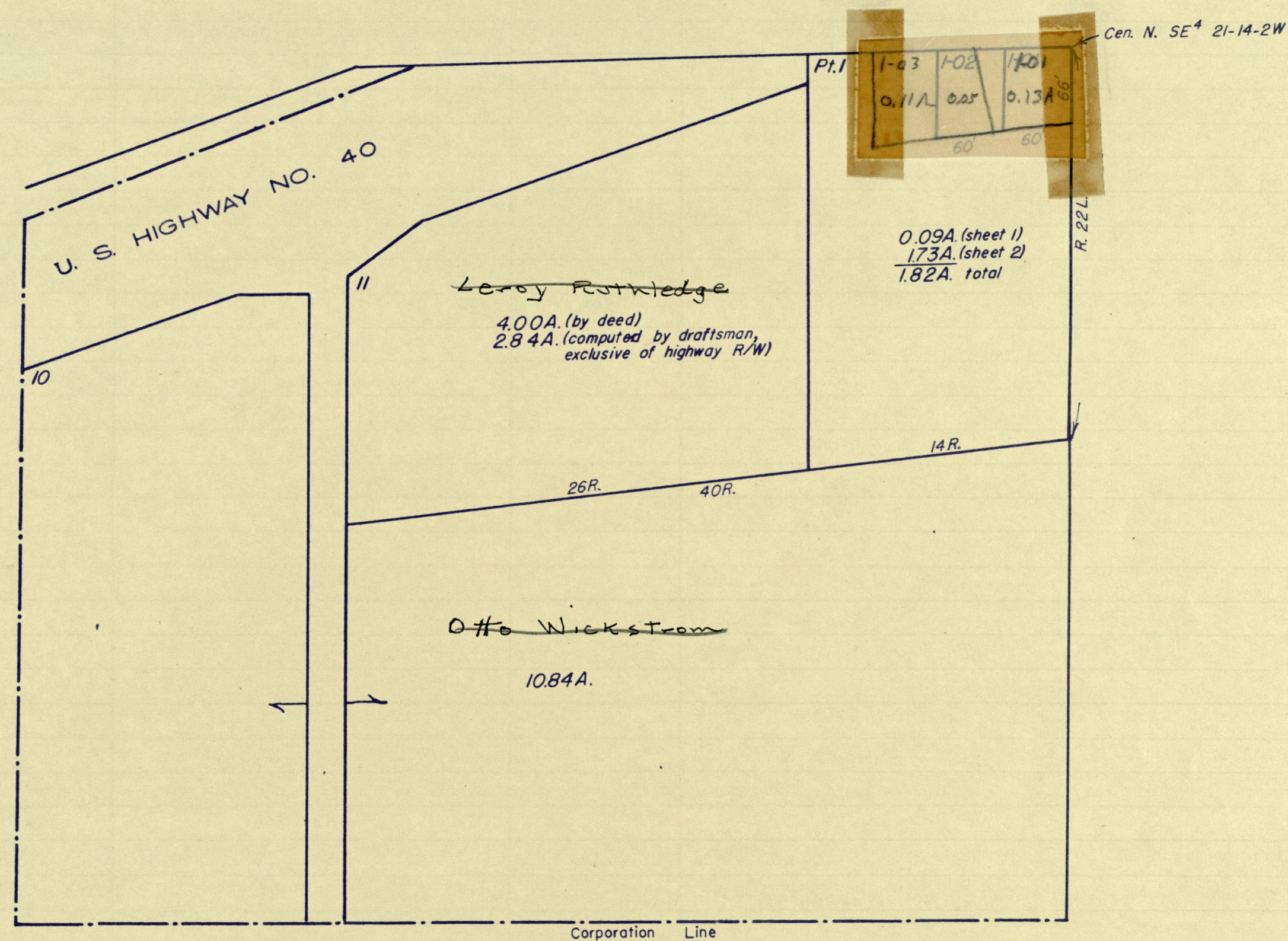


# PT. SE<sup>4</sup> 21-14-2W



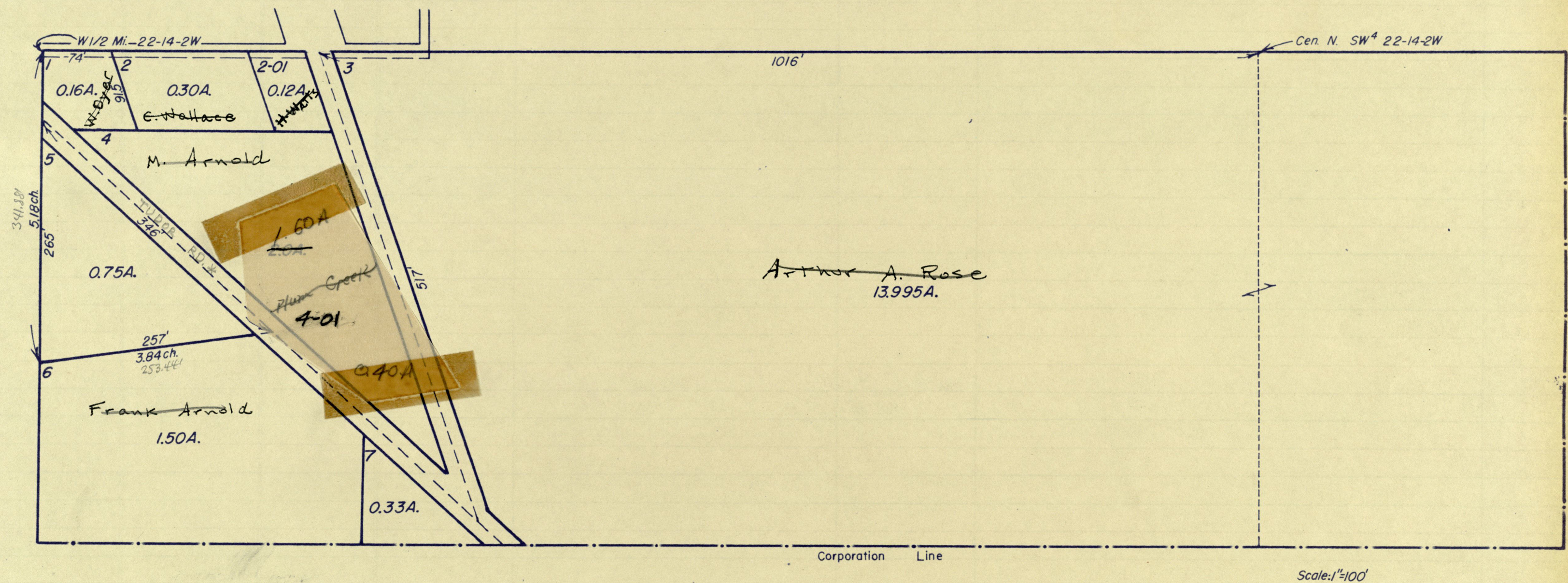


PT. SE<sup>4</sup> 21-14-2W



Scale:  $1'' = 100'$



PT. SW<sup>4</sup> 22-14-2W

\*Tudor Road, once called the Greensburg and Clinton State Road, was relocated to its present route November 21, 1831, in compliance with an Act of the General Assembly approved January 29, 1831. (County Commissioners' Record 2, p.12.) The Act called for relocating so much of said state road as was situated between the 54th mile post and Stilesville, etc., without stating its width excepting to say the road was "to be opened and recorded in the same manner as other parts of said state road were opened and recorded." The original route approved by the General Assembly January 9, 1830, was one of several to be laid out by Commissioner Amos Robertson who "shall not require any of the aforesaid roads to be opened exceeding forty feet in width." While such notice as to width seems inconclusive, the actual notice afforded by public possession and use between fences and by other physical evidence at various places along the present route indicates with a degree of certainty that 40 feet was taken for highway purposes.